

If you have queries about any of the above, please email

✉ [eyservice@gloucestershire.gov.uk](mailto:eyservice@gloucestershire.gov.uk) ✉

Having trouble viewing this email? [View it as a Web page.](#)

## Early Years Newsletter

**29 September 2023**



### **Welcome to Provider Update 4 (2023/24)**

We hope everyone is well.

Here are your updates.

Have a great weekend!

The Early Years Team

### **Can you help us shape the national picture for children in the Early Years with SEND – Dingley's Promise**

As you know at Dingley's Promise we are passionate about change, and we know you are too. We also share your concerns that our young children with SEND are not always as welcomed and supported as they could and should be in early years settings and we want to document and quantify the reasons why. Our Chief Exec Catherine has been working hard to form partnerships and build a national picture. This work is particularly pertinent as the new entitlements' rollout over the next few years and the attainment and access gap is at risk of widening.

To that effect we have created two online surveys below and we are keen to distribute far and wide.

We know there are lots of surveys out at present for lots of reasons and we will of course share the results, which we hope will support you to evidence you are “taking reasonable steps” to be legally compliant as the new entitlements roll out. We know you are as committed as we are to driving change for children and families, and we appreciate your support. **Please note the deadline is the 8 October.**

THANK YOU! Collectively we will continue to make a difference!

- [Survey for Families](#)
- [Survey for Settings](#)

## **DfE Survey on assessment in the Early Years Foundation Stage**

The Department for Education has launched a short survey to seek the views of early years practitioners, teachers and school and setting leaders on assessment in the EYFS. The survey includes questions on, assessment of children with special education needs and disabilities, the early learning goals and the EYFS Profile. Feedback from the sector will help shape future policy development in this area.

The survey is available [here](#) and will remain open until Tuesday 3 October.

Best wishes,

The Early Years Foundation Stage Policy Team

## **Early Education Gloucestershire Event – 12 October 2023**

The next Early Education Gloucestershire event is live on the website and can be booked [here](#)

[Early Education Gloucestershire booking link](#)

Meet the team for Early Education Gloucestershire - 6.15pm for 6.30pm-7.30pm. – Tithe Barn, Bishops Cleeve

Come along for a cuppa, cake and a catch up. Thriving Language will be popping in to answer your speech, language and communication questions

You will get to chat to the Early Education Gloucestershire team, let us know what you think Early Years needs locally and how we can help each other. Come along and be part of this awesome Early Years community

## **Last call! Have your say event for CHILDMINDERS**

Thank you to those of you who have booked onto the 'Have Your say' event!

We are really looking forward to seeing you all. There are just a handful of places left for this event so please book on to network with other childminders, meet the Early Years Forum Childminder reps and share your ideas about support and training for your sector. We will also be discussing workshops for the Childminders conference next May.



'Have Your Say' event



Saturday 7 October 2023



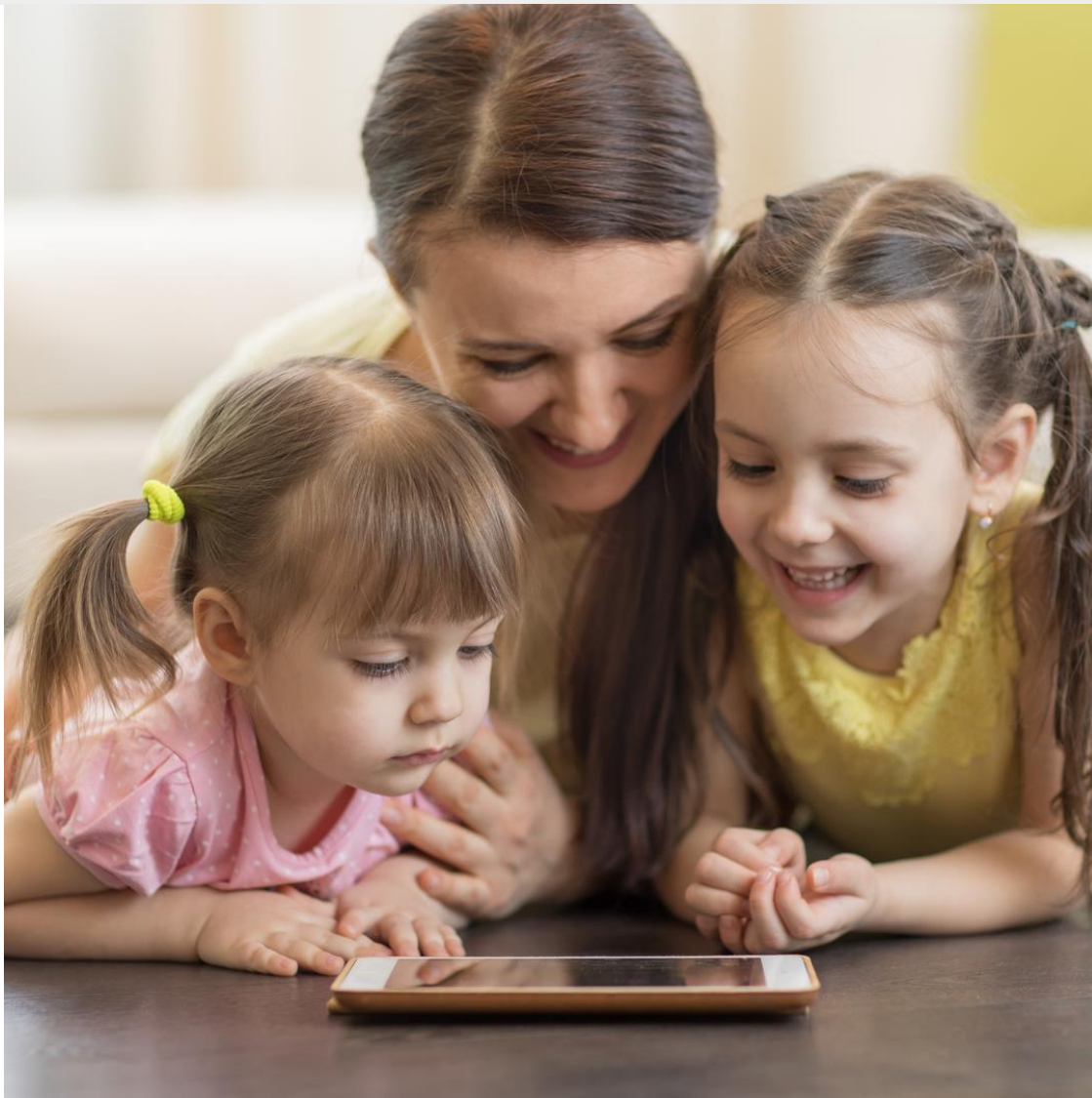
10.00am-12.00 noon – coffee from 9.30am



The Cheltenham Chase Hotel, Shurdington Road, Brockworth, Gloucester, GL3 4PB

Please book using the hyperlink below or, if you need help, please contact Bernie Fishpool.

- [Have Your Say Event Booking link](#)



Please do not reply to this email as it will go to a mailbox that is not monitored. If you wish to get in touch with Gloucestershire County Council, [please see our contact us page](#).