

# Birth Trends in Gloucestershire

## An Overview

Data & Analysis Team

Gloucestershire County Council

[informgloucestershire@gloucestershire.gov.uk](mailto:informgloucestershire@gloucestershire.gov.uk)

# Contents

<b>Number of Live Births in Gloucestershire</b> .....	3
<b>Crude Birth Rate</b> .....	4
<b>Age of Mother at Birth</b> .....	6
<b>General Fertility Rate</b> .....	5

Caveat: Due to COVID-19 there is a small impact on the births data whereby the data may be slightly underestimated in 2020 due to missing or delayed birth registrations. The overall decreasing trend in total number of births, as seen in previous years, is still valid.

## Number of Live Births in Gloucestershire

In 2020, there was 5,800 live births in Gloucestershire, the lowest number since 2002. Between 1991 and 2001 there was a broadly decreasing trend in the number of live births taking place in Gloucestershire. There was then an increasing trend in the number of births peaking at 6,880 before dipping in 2013. Since 2016, the number of babies born has decreased year on year.

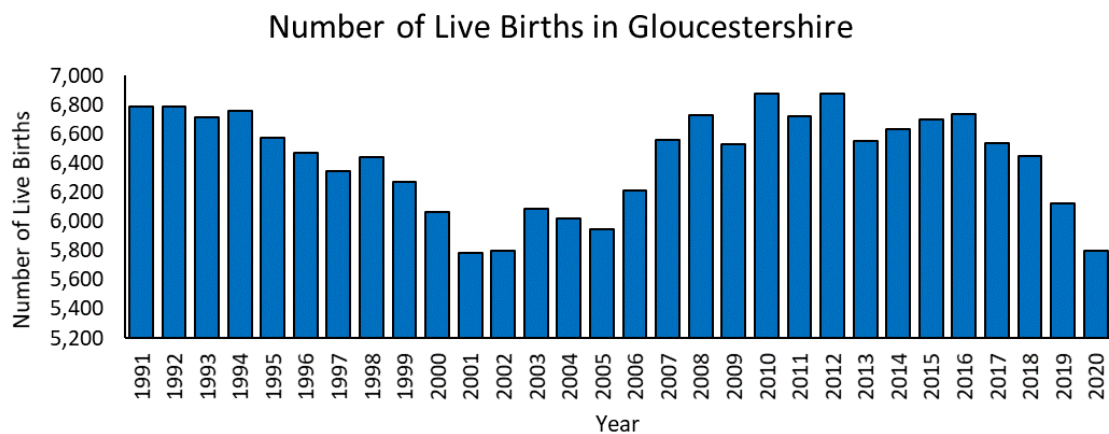


Figure 1. Number of Live Births Each Year in Gloucestershire Since 1991

### District Focus:

- In 2020, Gloucester had the highest number of births with 1,437, accounting for 24% of Gloucestershire’s births
- In 2020, Cotswold had the lowest number of births with 696 births, accounting for 12% of Gloucestershire’s births
- No districts had an increase in the number of live births in 2020 compared to 2019

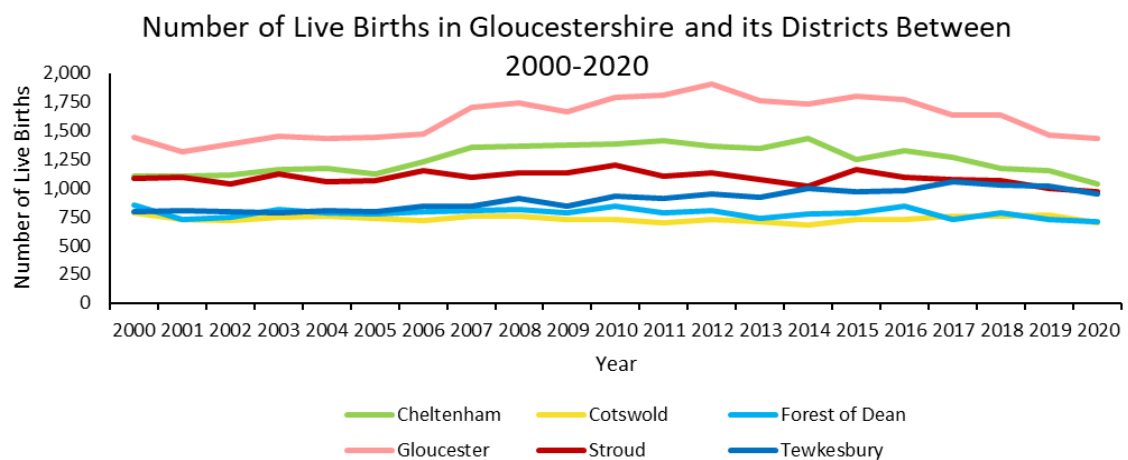


Figure 2. Number of Live Births in Gloucestershire and its Districts

Caveat: Due to COVID-19 there is a small impact on the births data whereby the data may be slightly underestimated in 2020 due to missing or delayed birth registrations. The overall decreasing trend in total number of births, as seen in previous years, is still valid.

## Crude Birth Rate

The Crude Birth Rate (CBR) is the number of lives births per 1,000 population in a given year. In 2020, the CBR was 9.1 births per 1,000 population in Gloucestershire. In comparison, the CBR in the South West was 8.9 births per 1,000 population and the CBR in England and Wales was 10.3 births per 1,000 population.

Table 1. Crude Birth Rates in Gloucestershire and its Districts

Area	Crude Birth Rate 2019	Crude Birth Rate 2020	Increase or decrease from 2019
<b>Gloucestershire</b>	<b>9.6</b>	<b>9.1</b>	↓
Cheltenham	9.9	8.9	↓
Cotswold	8.5	7.7	↓
Forest of Dean	8.4	8.2	↓
Gloucester	11.3	11.1	↓
Stroud	8.4	8.0	↓
Tewkesbury	10.7	9.8	↓
<b>South West</b>	<b>9.3</b>	<b>8.9</b>	↓
<b>England and Wales</b>	<b>10.8</b>	<b>10.3</b>	↓

### District Focus

- In 2020, Gloucester had the highest CBR with 11.1 births per 1,000 population
- In 2020, Cotswold had the lowest CBR with 7.7 births per 1,000 population
- All districts had a lower CBR in 2020 compared to 2019

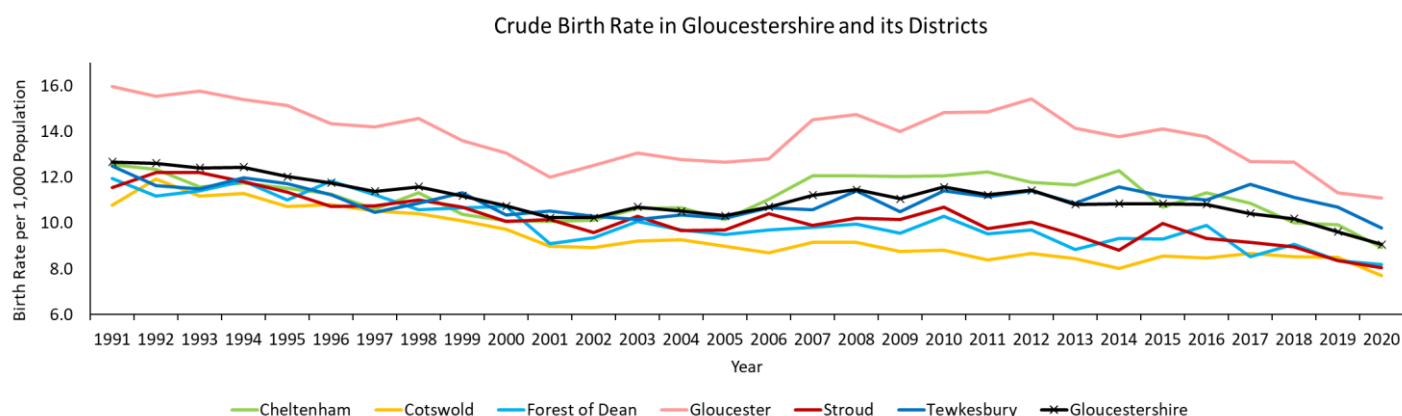


Figure 3. Crude Birth Rate in Gloucestershire and its Districts

Caveat: Due to COVID-19 there is a small impact on the births data whereby the data may be slightly underestimated in 2020 due to missing or delayed birth registrations. The overall decreasing trend in total number of births, as seen in previous years, is still valid.

## General Fertility Rate

The General Fertility Rate (GFR) is the number of live births per 1,000 women who are of child-bearing age (15-44 years old). In 2020, Gloucestershire had a GFR of 53.6 which is higher than the rate for the South West at 52.3 births per 1,000 child-bearing age women but lower than the rate for England and Wales which was 55.1 births per 1,000 child-bearing age women. In Gloucestershire, the South West and England and Wales, the GFR decreased in 2020 compared to 2019. Gloucestershire experienced the biggest decrease with 3.3 fewer births per 1,000 women in 2020.

Table 2. General Fertility Rate in Gloucestershire and its Districts

Area	General Fertility Rate 2020	General Fertility Rate 2019	Increase or decrease from 2019
<b>Gloucestershire</b>	53.6	56.9	↓
Cheltenham	47.1	52.1	↓
Cotswold	52.5	57.6	↓
Forest of Dean	53.5	54.9	↓
Gloucester	58.3	59.5	↓
Stroud	51.8	54.2	↓
Tewkesbury	57.9	63.9	↓
<b>South West</b>	52.3	54.7	↓
<b>England and Wales</b>	55.1	57.5	↓

### District Focus:

- Gloucester had the highest GFR out of the six districts with a rate of 58.3 births per 1,000 women of child-bearing age in 2020
- Cheltenham had the lowest GFR with 47.1 births per 1,000 child-bearing age women
- All districts experienced a decreased in the GFR between 2019 and 2020

## Age of Mother at Birth

Between 2004 and 2020, the distribution of births by age of the mother has remained similar in Gloucestershire. The years shown on the graph indicate that the highest proportion of births are to mothers aged 30-34 followed by 25–29-year-olds. Only a small proportion of births are to mothers below the age of 19 and above the age of 45.

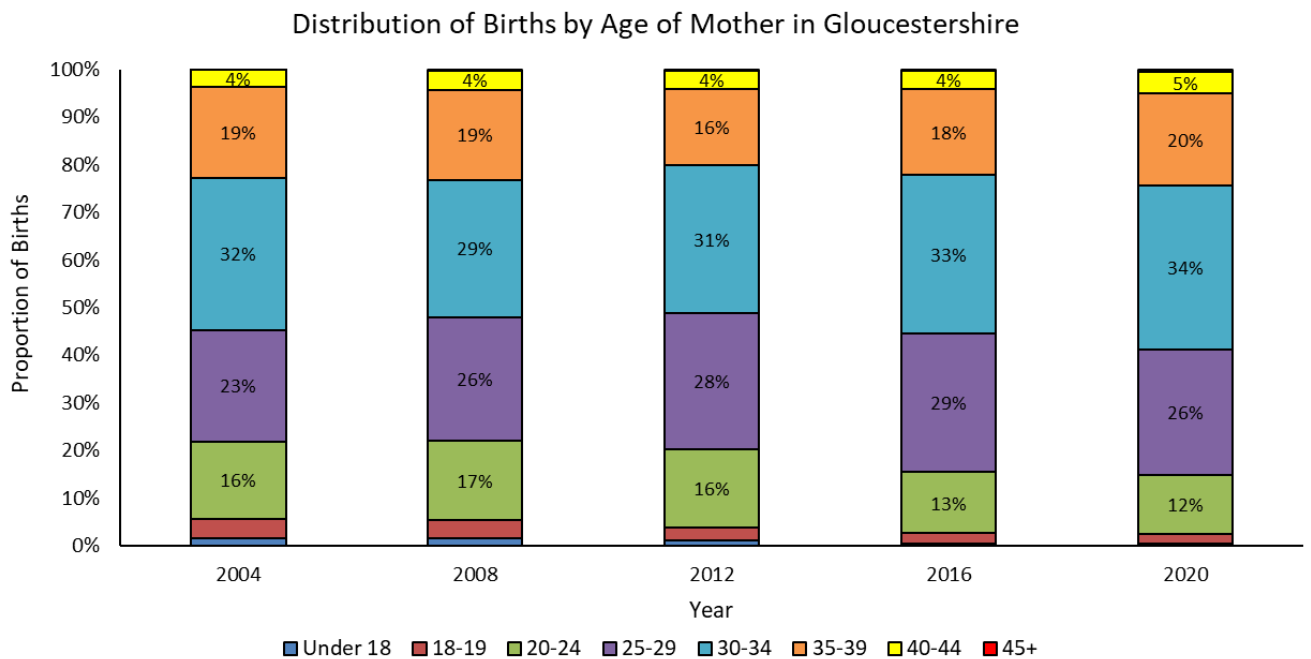


Figure 4. Distribution of Births by Age of Mother in Gloucestershire

## District Focus

- In 2020, Gloucester had the highest number of births to mothers under the age of 18 with 12 and Stroud had the lowest with 1
- Cotswold had the highest number of births to mothers over the age of 45 with 9 and Forest of Dean and Tewkesbury had the lowest with 2 each in 2020