

SENDIASS Gloucestershire

Special Educational Needs and Disability
Information, Advice & Support Service



The impact of the SEND reforms
on children and young people
with Statements



www.sendiassglos.org.uk

This information is about how the reforms to the SEND Code of Practice affect children and young people who have Statements of Special Educational Need (SEN), and young people in further education and training who have special educational provision through a Section 139A Learning Difficulty Assessment (LDA).

How has the law changed?

In September 2014 the Children and Families Act 2014 came into force. A new SEND Code of Practice covers children and young people with special educational needs and/or disabilities from birth to age 25. One big change is that Education, Health and Care Plans (EHC plans) will replace Statements of SEN and LDAs.

The SEND Code of Practice says:

The purpose of an EHC plan is to make special educational provision to meet the special educational needs of the child or young person, to secure the best possible outcomes for them across education, health and social care and, as they get older, prepare them for adulthood. (9.2)

Local authorities must transfer all children and young people who have a Statement to the new SEND system by 1 April 2018 unless the Statement is no longer necessary.

Every local authority should publish a local transition plan. This explains when and how Statements will be transferred to the new system, and gives information for young people in further education and training who receive support through an LDA.

How does this affect those with Statements?

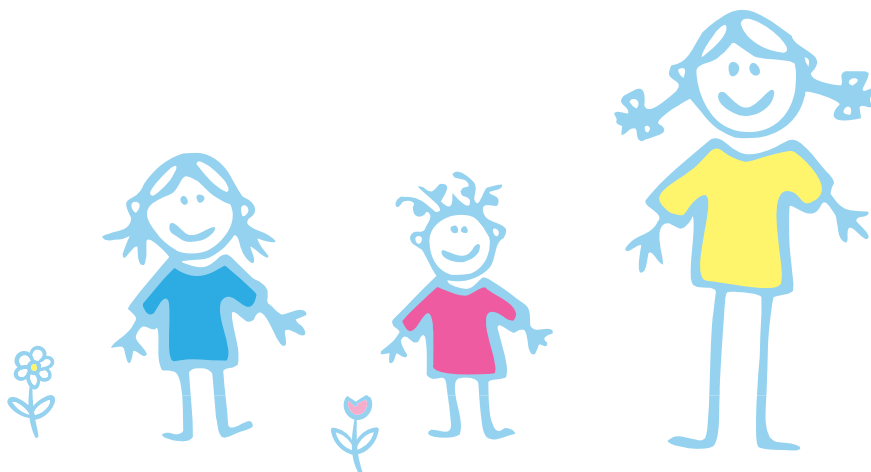
Until 1 April 2018 local authorities must continue to comply with Part IV of the Education Act 1996 (the old law) if the child or young person has a Statement. The Statement continues and annual reviews will take place until one of the following happens:

- the local authority decides to cease the Statement;
- the Statement ceases because the young person leaves education;
- there is a transfer review and:
 - o an EHC plan is agreed, or
 - o the local authority decides an EHC plan is not required.

The SEND Code of Practice says:

During the transition period local authorities will transfer children and young people with statements onto the new system.... No-one should lose their statement and not have it replaced with an EHC plan simply because the system is changing. (9.4)

Transition to EHC plans is staggered over the next three years. In each year local authorities must transfer some groups of children and young people with Statements, and should give priority to other groups.



Between September 2015 and April 2018

In each year, local authorities must transfer children and young people to the new system:

- in Year 9
- before they move between
 - o an early years settings to school
 - o infant to junior school
 - o primary to middle school
 - o primary to secondary school
 - o middle to secondary school
 - o mainstream to special school (or vice versa).

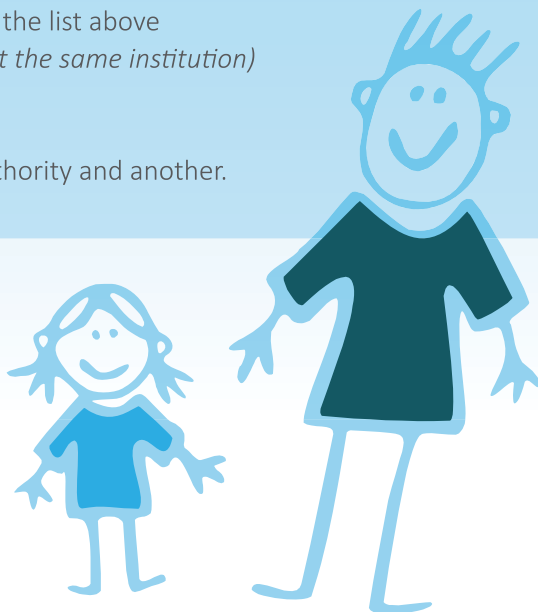


In 2015/16, local authorities must also transfer young people on request to EHC plans if they have an LDA and will continue in education after August 2016.

Between September 2016 and 31st March 2018

In each year, local authorities should give priority to transferring to the new system those children and young people:

- children in Year 6 not included in the list above
(including where the child stays at the same institution)
- in Year 11
- leaving custody
- who move between one local authority and another.



What is a transfer review?

A transfer review replaces the annual review in the academic year that the child or young person transfers to the new SEND system. The review must be completed within 12 months of the date the Statement was issued or of the previous annual review.

A transfer review requires an EHC needs assessment to decide what needs, outcomes and provision should be included in the EHC plan. This should include education, health and social care needs. The local authority must not ask for further advice if the advice it has already is sufficient, but you can disagree if you do not think it is and then the authority has to get new advice. Before existing advice is used, the person who provided the advice, the local authority, the child's parents or the young person must all be satisfied that the advice is "sufficient for the purposes of an EHC needs assessment".

You, your child or the young person must be invited to a meeting as part of the transfer review, and be given two weeks' notice of that meeting.

A transfer review ends when the local authority sends you (or the young person) a copy of the final EHC plan, or when it informs you (or the young person) that an EHC plan will not be issued. The local authority must finalise the EHC plan, where one is needed, within 20 weeks of you being told that they are carrying out the transfer review or an EHC needs assessment.

For moves between school stages there are particular deadlines for the issue of EHC plans. These are:

- 31 March in the calendar year that the child or young person transfers from secondary school to post 16 institution
- 15 February in the calendar year of the child's transfer in any other case

Once the transfer process starts, your rights to appeal to the Special Educational Needs and Disability Tribunal under the Children and Families Act 2014 replace those you had under the Education Act 1996.

What does an EHC plan look like?

Every local authority can decide how to set out the EHC plan, but it must include 12 specific sections.

Key differences compared to Statements should include:

- a greater focus on outcomes
- more emphasis on the involvement of parents, children and young people
- improved integration of health and social care provision
- continuation, where appropriate, to age 25
- more rights for young people

How does this affect those with Learning Difficulties Assessments?

Local authorities must continue to have regard to the statutory Learning Difficulty Assessment guidance until 1 September 2016. If a young people with an LDA requests it, the local authority must transfer them to an EHC plan by 1 September 2016 if they are staying in further education or training after that date.



What if I do not agree with the local authority?

The first step is to contact the local authority to discuss your concerns.

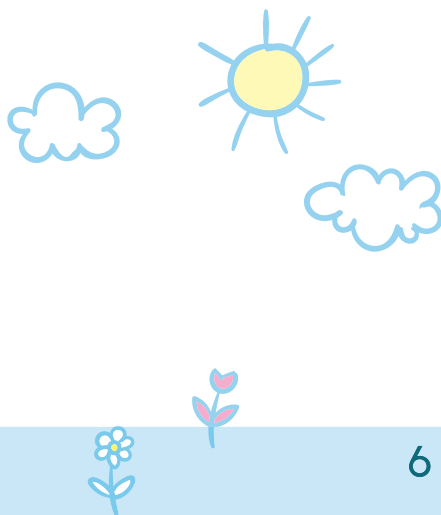
SENDIASS Gloucestershire offers impartial advice and support and can explain your options, including your rights to request reassessment and to appeal.

Where can I get more information, advice or support?

Every authority has a transition plan that sets out the local arrangements

SENDIASS Gloucestershire can also give you:

- information about the local transition arrangements, and advice on how they might affect you or your child
- information and advice about transfer reviews
- advice and support during the transition process and in transfer reviews
- details of other organisations, support groups and information services that could help
- information, advice and support about your rights to make a complaint, seek independent disagreement resolution or mediation and appeal to the SEND Tribunal.



Contact us:

Further information, advice and support:

If you would like further information, advice or support please contact SENDIASS Gloucestershire. This service is independent, impartial, confidential and free.

Special Educational Needs and Disability Information Advice and Support Service (SENDIASS)

Gloucestershire

Messenger House - 2nd Floor
35 St. Michael's Square
Gloucester
GL1 1HX



Freephone: 0800 158 3603



Direct Line: 01452 389344/5



sendiass@carersgloucestershire.org.uk



www.sendiassglos.org.uk



Sendiass Gloucestershire



[@sendiassglos](https://twitter.com/sendiassglos)



SENDIASS Gloucestershire has made all reasonable efforts to ensure that the information contained in this leaflet is accurate and up to date at the time of publication. It does not constitute legal advice and SENDIASS Gloucestershire cannot accept any responsibility for any loss or damage suffered as a consequence of any reliance placed upon it.

