

# Indices of Deprivation 2025

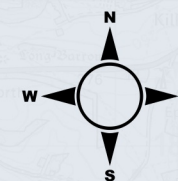
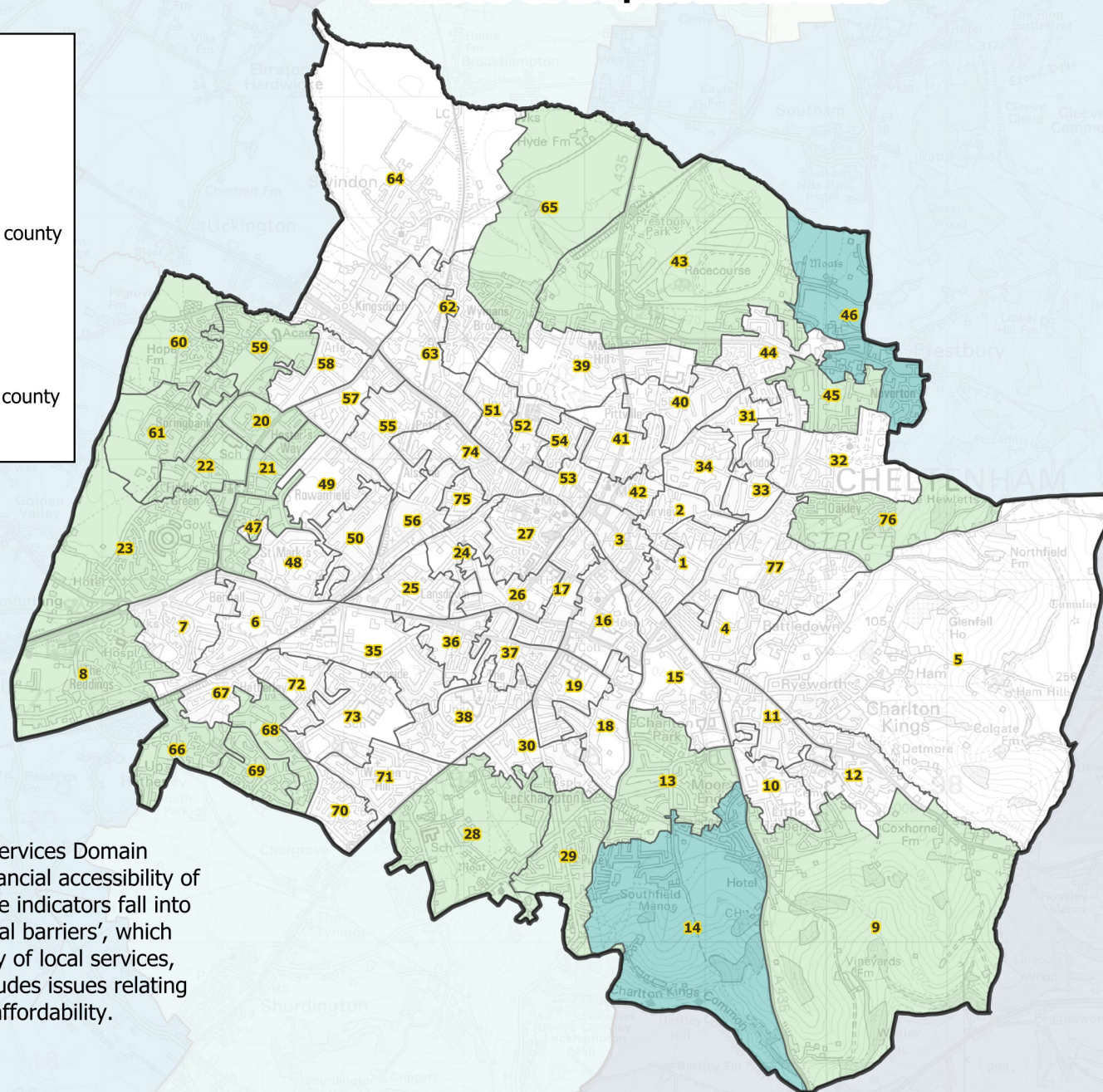
## Key

Barriers to Housing  
and Services

County Quintile

- 20% most deprived in the county
- 
- 
- 
- 20% least deprived in the county
- District Boundary

The Barriers to Housing and Services Domain measures the physical and financial accessibility of housing and local services. The indicators fall into two sub-domains: 'geographical barriers', which relate to the physical proximity of local services, and 'wider barriers' which includes issues relating to access to housing such as affordability.



Number	LSOA local name (2021)
1	ALL SAINTS 1
2	ALL SAINTS 2
3	ALL SAINTS 3
4	BATTLEDOWN 2
5	BATTLEDOWN 3
6	BENHALL AND THE REDDINGS 1
7	BENHALL AND THE REDDINGS 2
8	BENHALL AND THE REDDINGS 3
9	CHARLTON KINGS 1
10	CHARLTON KINGS 2
11	CHARLTON KINGS 3
12	CHARLTON KINGS 4
13	CHARLTON PARK 1
14	CHARLTON PARK 2
15	CHARLTON PARK 3
16	COLLEGE 1
17	COLLEGE 2
18	COLLEGE 3
19	COLLEGE 4
20	HESTERS WAY 1
21	HESTERS WAY 2
22	HESTERS WAY 3
23	HESTERS WAY 4
24	LANSDOWN 1
25	LANSDOWN 2
26	LANSDOWN 3
27	LANSDOWN 4
28	LECKHAMPTON 1
29	LECKHAMPTON 2
30	LECKHAMPTON 3
31	OAKLEY 1
32	OAKLEY 2
33	OAKLEY 3
34	OAKLEY 4
35	WARDEN HILL 3
36	PARK 2
37	PARK 3
38	PARK 4
39	PITTVILLE 1
40	PITTVILLE 2
41	PITTVILLE 3
42	PITTVILLE 4
43	PRESTBURY 1
44	PRESTBURY 2
45	PRESTBURY 3
46	PRESTBURY 4
47	ST MARK'S 1
48	ST MARK'S 2
49	ST MARK'S 3
50	ST MARK'S 4
51	ST PAUL'S 1
52	ST PAUL'S 2
53	ST PAUL'S 3
54	ST PAUL'S 4
55	ST PETER'S 1
56	ST PETER'S 2
57	ST PETER'S 3
58	SPRINGBANK 1
59	SPRINGBANK 2
60	SPRINGBANK 3
61	SPRINGBANK 4
62	SWINDON VILLAGE 1
63	SWINDON VILLAGE 2
64	SWINDON VILLAGE 3
65	SWINDON VILLAGE 4
66	UP HATHERLEY 1
67	UP HATHERLEY 2
68	UP HATHERLEY 3
69	UP HATHERLEY 4
70	WARDEN HILL 1
71	WARDEN HILL 2
72	UP HATHERLEY 5
73	WARDEN HILL 4
74	LANSDOWN 5
75	ST PETER'S 5
76	BATTLEDOWN 1
77	BATTLEDOWN 4