

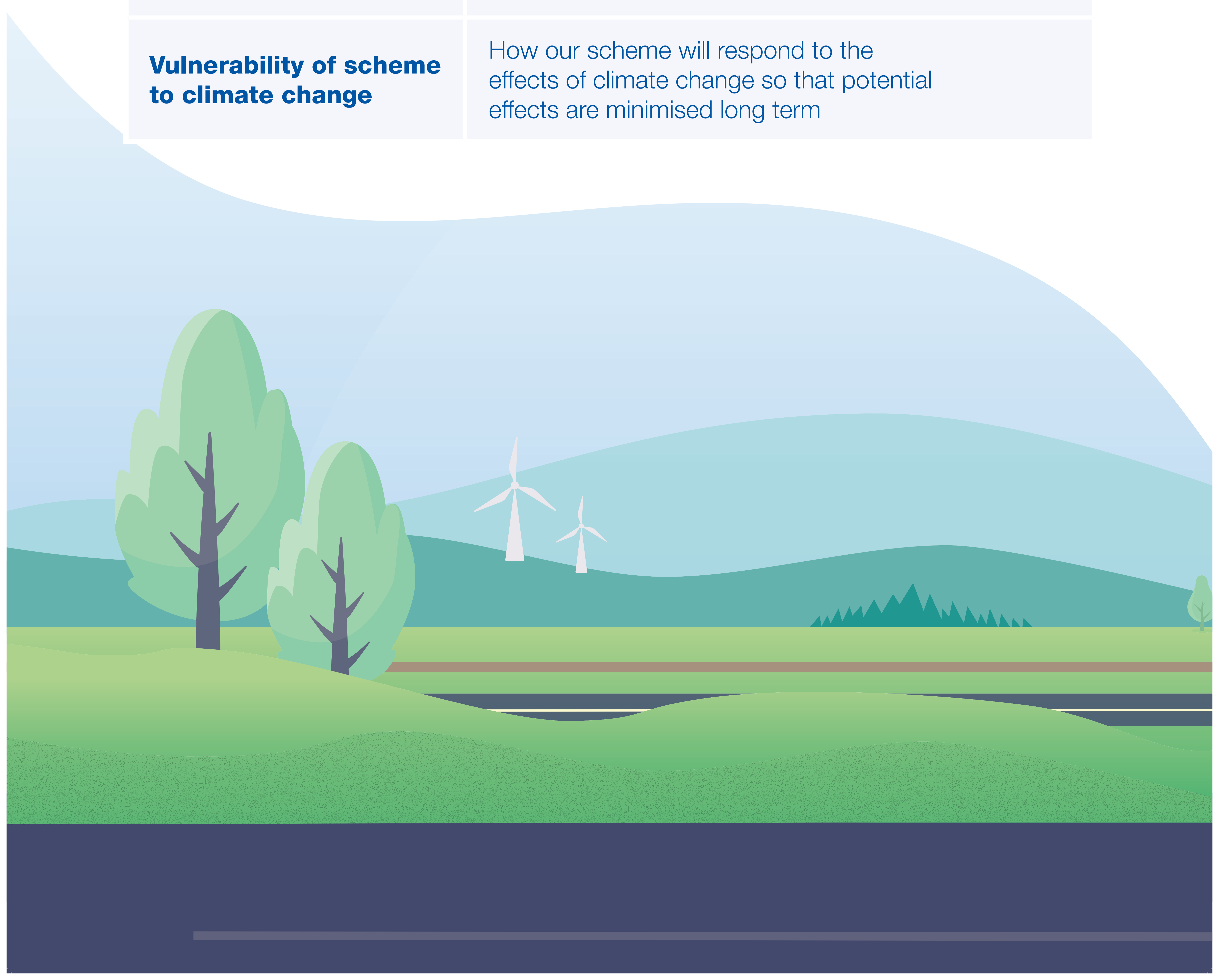
Our effect on the environment

We are gathering environmental information to identify potential impacts of the scheme and to develop measures to avoid or reduce them. This process is known as an Environmental Impact Assessment (EIA). While the EIA is ongoing, we have prepared a Preliminary Environmental Information Report (PEIR).

This sets out how environmental topics are being assessed, the potential effects of our proposals on the environment, and the measures we will take to reduce any impact.

A full Environmental Statement will be submitted as part of our DCO application and made publicly available.

Environmental Impact	What we're assessing
Air quality	How our scheme will affect the levels of pollutants in the air
Biodiversity	How our scheme will affect the habitat, plants and animal species present
Cultural heritage	How our scheme will affect the existing historic buildings and features, and buried archaeology
Effects of scheme on climate change	What effect our scheme will have on climate change
Flooding	How our scheme will affect the land vulnerable to flooding in the local area
Geology and soils	How our scheme will affect the ground and soil in the local area
Landscape	How our scheme will affect the landscape and particular views
Materials and waste	The materials we will use in our scheme and how our scheme will deal with waste
Noise and vibration	Understanding the effects our scheme may have on noise in the local area
Road drainage and the water environment	What our scheme would mean for the water quality of our rivers, watercourses and groundwater
Population and human health	What effects our scheme might have on the local economy and population generally
Vulnerability of scheme to climate change	How our scheme will respond to the effects of climate change so that potential effects are minimised long term

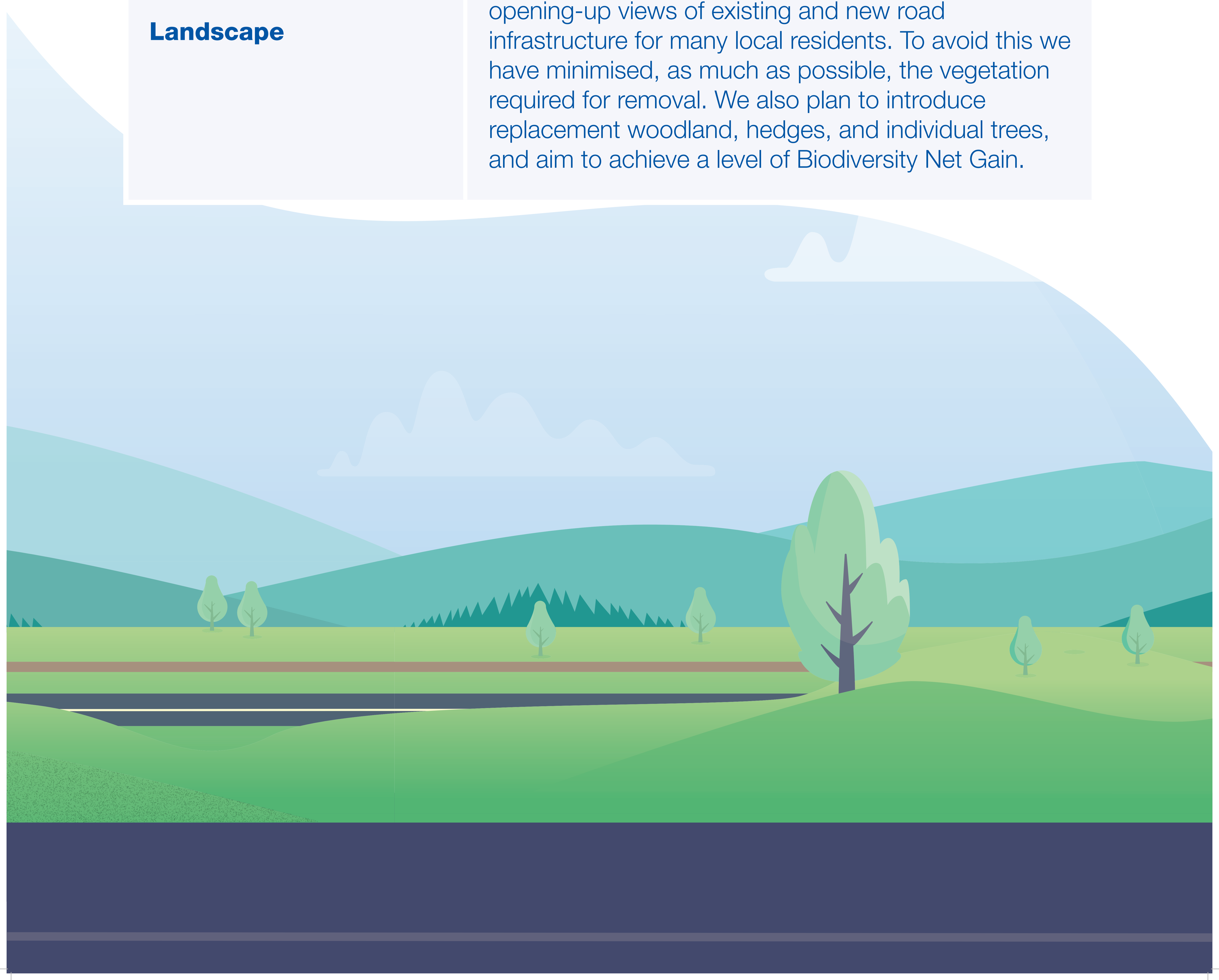


Our proposed mitigation

We will aim to minimise the impact the scheme has on the surrounding areas and make improvements where possible.

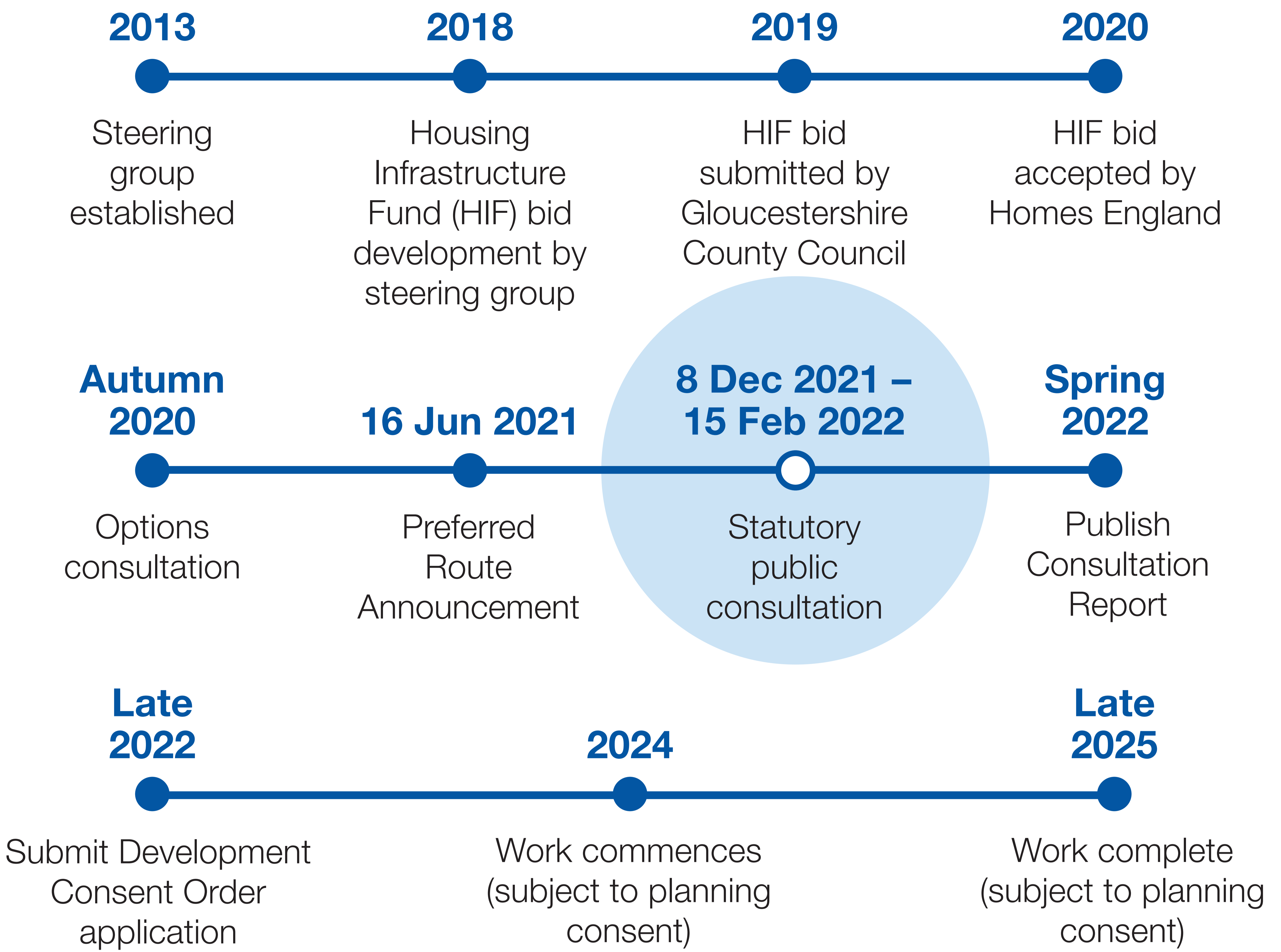
Please see the scheme plans on the other boards to see the various mitigation plans. More details on particular topics of interest are shown below.

Environmental Impact	What we're assessing
<p>Biodiversity</p>	<p>We have undertaken detailed surveys since 2019 to understand the habitats and protected species that are present, so that measures can be included in the scheme to minimise impacts to them.</p> <p>The landscape design seeks to retain existing vegetation where possible, and also create new habitats. We will seek a net gain in biodiversity through the new habitats created.</p>
<p>Effects of scheme on climate change</p>	<p>Our scheme will result in carbon dioxide emissions during the construction phase and is likely to increase emissions during the operational phase due to increased traffic levels. Our goal is to reduce the volume of these emissions as much as possible.</p> <p>The PEIR findings concluded that the scheme is highly unlikely to affect the UK's ability to meet its carbon budget. This means that the emissions produced during the construction and operational phases of the scheme will likely have a negligible impact on the country's overall carbon emissions.</p>
<p>Flooding</p>	<p>The scheme is located in an existing floodplain and will block existing routes for floodwater across the ground. This would result in our scheme (particularly the Link Road) displacing and directing floodwater elsewhere, increasing the depth, extent, and duration of flooding to farmland and property.</p> <p>We understand that this is a major concern for local residents. We will include flood compensation areas within our design to compensate for the loss of flood plain area resulting from the scheme. Flood mitigation structures will be installed underneath the Link Road to limit the effect of our scheme</p>
<p>Landscape</p>	<p>We are considering how the scheme will look and what effect it might have on the landscape.</p> <p>Vegetation loss would change views in the area, opening-up views of existing and new road infrastructure for many local residents. To avoid this we have minimised, as much as possible, the vegetation required for removal. We also plan to introduce replacement woodland, hedges, and individual trees, and aim to achieve a level of Biodiversity Net Gain.</p>



Scheme timeline

Scheme milestones



The Development Consent

This scheme is classified as a Nationally Significant Infrastructure Project (NSIP). Therefore, planning permission, via a Development Consent Order (DCO) application, must be obtained from the Planning Inspectorate (PINS) rather than the local planning authorities.

We will record and carefully consider all responses received during the consultation and consider these when finalising our DCO application and before we submit it to the PINS.

We will summarise our findings in a consultation report, which will form a part of our DCO application to the PINS. Please see the timeline below which outlines the process of the DCO application.

Once the DCO application has been submitted to the PINS, the Secretary of State for Transport has the final approval.

