

# Unemployment Bulletin

Issue 39 October 2011

## Contents

### Part 1: Summary

A summary of unemployment data at district, County, regional and national level

1

### Part 2: County

Unemployment figures for the County compared to the South West and the rest of the UK

3

### Part 3: Districts

A comparative break down of unemployment figures by district

4

### Part 4: Wards

Further breakdown of unemployment figures by ward:

Cheltenham 6

Cotswolds 8

Forest of Dean 10

Gloucester 12

Stroud 14

Tewkesbury 16

### Part 5: Map

Distribution of claimant rate across Gloucestershire

18

### Part 6: Young People

Data about Young People Not in Education, Employment or Training (NEET)

20

## INTRODUCTION

The Unemployment Bulletin provides a monthly update on unemployment data for Gloucestershire, the South West region and the United Kingdom. It is produced by the Economic section of the County Council Chief Executive's Support Unit Research Team. The data is sourced from the Office for National Statistics via Nomis ([www.nomis.co.uk](http://www.nomis.co.uk)).

The claimant count measures the number of people claiming unemployment-related benefit (currently Job Seeker's allowance). The claimant rate is the number of claimants as a proportion of the working age population.

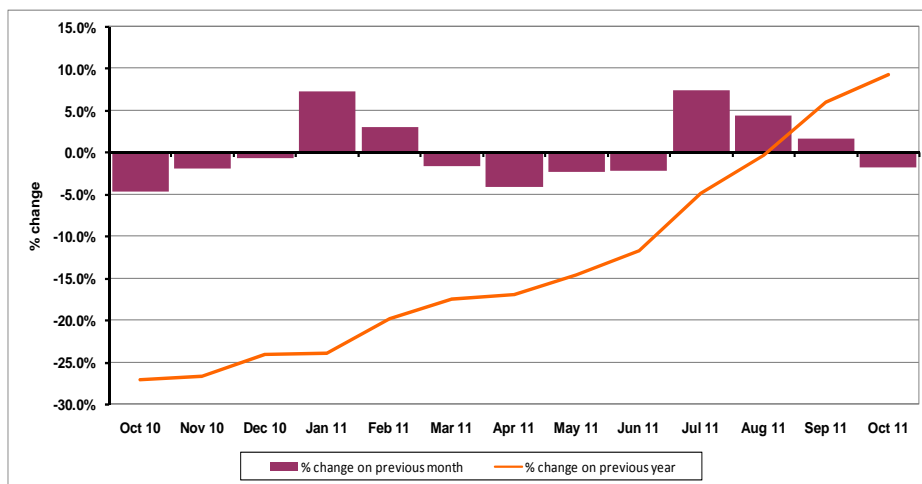
## PART 1: SUMMARY

**The claimant rate in Gloucestershire was 2.6% in October 2011.** This was the same as the September 2011 figure. The UK and South West rate also remained the same as last month at 3.9% and 2.6% respectively. Gloucestershire's rate was the same as the South West average of 2.6%, and 1.3% lower than the UK average of 3.9%.

**The claimant count in Gloucestershire in October 2011 decreased by 165 people.** The amount of people claiming in October 2011 was -1.7% lower than the number in September 2011. This compares to a -1.5% decrease in the South West and a -1.0% decrease for the UK.

**The year on year claimant count in Gloucestershire has increased.** The count was 9.2% higher in October 2011 than at the same point in the previous year as shown in the graph below.

Gloucestershire claimants - Month on Month and Year on Year change: October 2010 to October 2011



Source: ONS Crown Copyright Reserved

Produced by:

**The Research Team (Economics)**  
Chief Executive Support Unit  
Gloucestershire County Council  
November 2011

## DISTRICTS AT A GLANCE

At a glance unemployment information grouped by district. Includes:

**Claim count:** Total number of people claiming Job Seekers Allowance in October 2011

**Compared to last month:** How much larger/smaller October's claim count is compared to September, expressed as a %

**Claimant rate:** The % of working population claiming Job Seekers Allowance in October 2011

**Highest claiming ward:** The ward with the highest claim count in that district and the rate

### CHELTENHAM BOROUGH

Claim count:	2,238
Compared to last month:	-0.5%
Claimant rate:	3.0%
Highest claiming ward	Oakley (6.0%)

### GLOUCESTER CITY

Claim count:	2,992
Compared to last month:	-1.4%
Claimant rate:	3.9%
Highest claiming ward	Westgate (7.8%)

### COTSWOLD DISTRICT

Claim count:	707
Compared to last month:	-2.8%
Claimant rate:	1.4%
Highest claiming ward	Cirencester Watermoor (3.3%)

### STROUD DISTRICT

Claim count:	1,347
Compared to last month:	-6.5%
Claimant rate:	2.0%
Highest claiming ward	Slade (5.5%)

### FOREST OF DEAN

Claim count:	1,323
Compared to last month:	-0.2%
Claimant rate:	2.6%
Highest claiming ward	Lydney East (4.3%)

### TEWKESBURY BOROUGH

Claim count:	1,094
Compared to last month:	+0.5%
Claimant rate:	2.2%
Highest claiming ward	Tewkesbury Prior's Park (5.2%)

## YOUNG PEOPLE NOT IN EDUCATION, EMPLOYMENT OR TRAINING (NEET)

As at the end of October 2011 there were 953 young people aged 16-18 not in education, employment or training in Gloucestershire and this figure translates into an adjusted (\*) 16-18 NEET population of 5.7%.

## PART 2: UK, SW AND GLOUCESTERSHIRE INDICATORS

The unemployment situation in Gloucestershire compared to the South West and the UK.

### Claimant Rate

Figure 1: Claimant Rate for Gloucestershire, the South West and UK over the past year

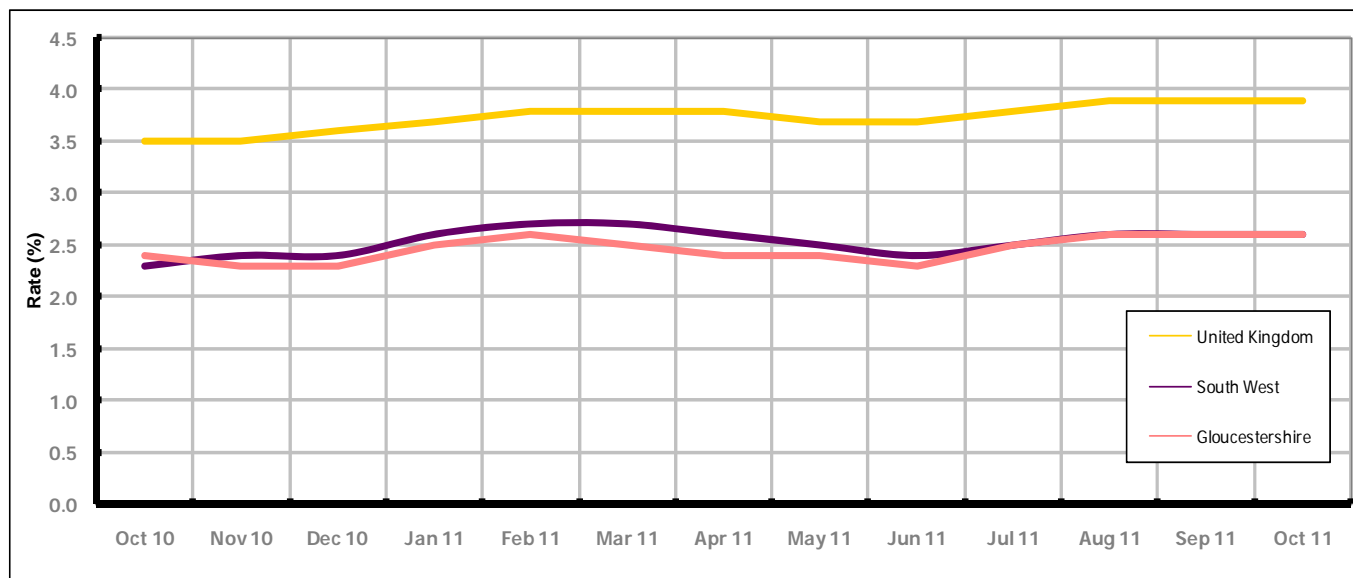


Figure 1 shows the claimant rate for Gloucestershire at 2.6% in October 2011. The rate remained lower than the South West average between November 2010 and July 2011, when it grew to the same as the South West rate, it has been lower by approximately 1.3% against the UK average during the same period. The October 2011 rate remained the same as September 2011.

### Claimant Count

Table 1: Analysis of UK, South West and Gloucestershire Claimant Counts

Area	Claimant Count in October 2011	% change on September 2011	Average % change over the last six months	Consecutive months decreasing
UK	1,562,501	-1.0%	+0.6%	0
South West	86,409	-1.5%	+0.9%	0
Gloucestershire	9,701	-1.7%	+1.6%	0

Table 1 shows that in October 2011, the number of claimants in Gloucestershire was -1.7% lower than the number in September 2011.

The average change in claimants in Gloucestershire for the six months to October 2011 was +1.6%. This is 1.0% higher than the UK average and 0.7% higher than the South West average.

## PART 3: LOCAL AUTHORITY DISTRICT ANALYSIS

### Claimant Rate and Claimant Count

Figure 2: Claimant Rate (%) across Gloucestershire - October 2011

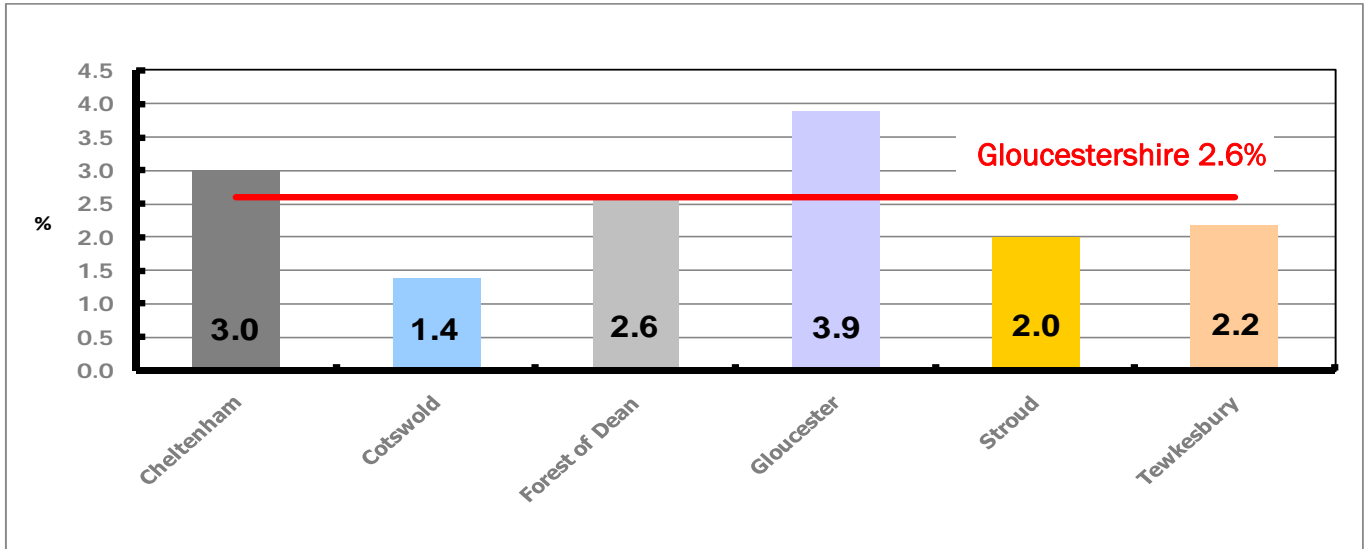


Figure 2 shows the claimant rate for October 2011 in Gloucestershire. Between September 2011 and October 2011 Gloucester and Stroud districts experienced a decrease, while all the other districts remained the same.

Figure 3: Total claimants over the past year across Gloucestershire Districts

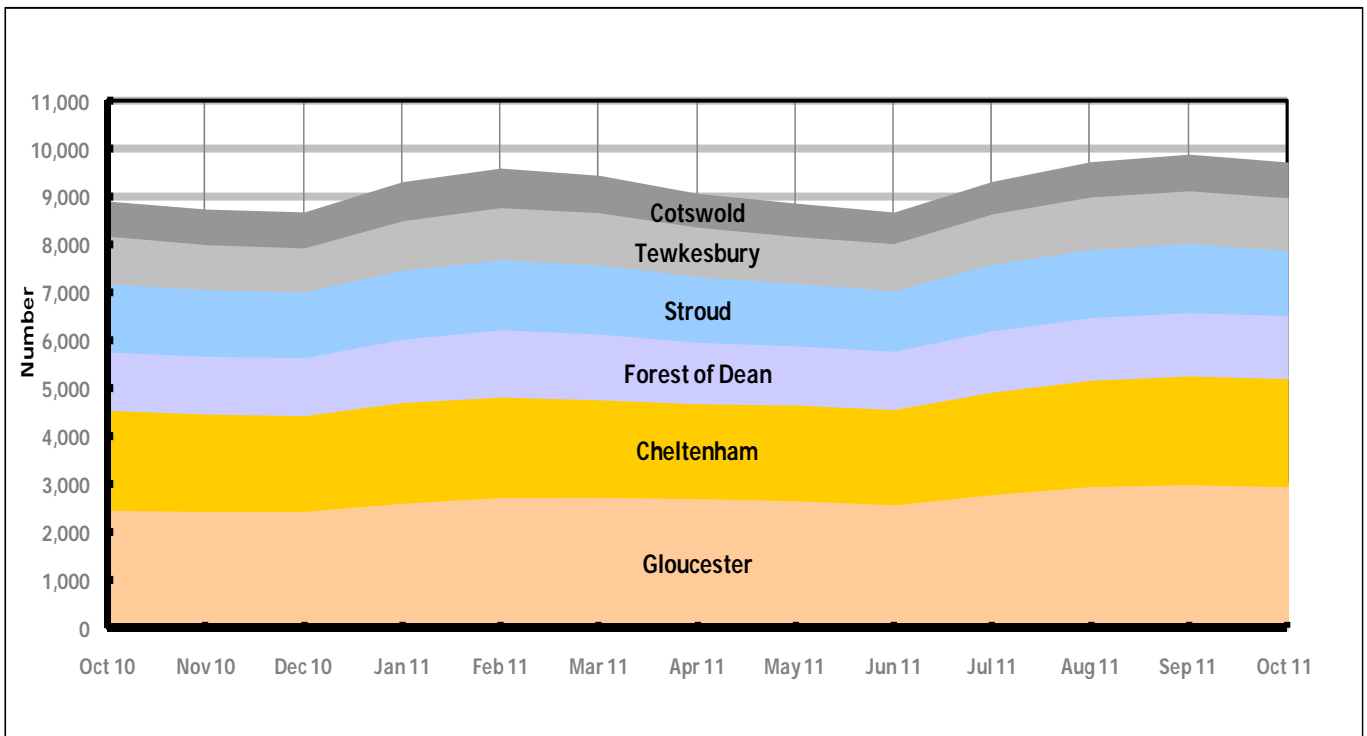


Figure 3 shows the overall claimant count by district over the past year. The number of claimants generally declined between October 2010 and June 2011. Since July 2011 the number of claimants have been increasing, with the exception of October when there was a small decline.

Table 2: Analysis of Gloucestershire and District Claimant Counts

Total	Oct 11 Number	Oct 11 Rate	Sep 11 Number	Sep 11 Rate	Monthly change	% monthly change	Monthly change of rate
<b>Gloucestershire</b>	9,701	2.6	9,866	2.6	-165	-1.7%	0.0
Cheltenham	2,238	3.0	2,250	3.0	-12	-0.5%	0.0
Cotswold	707	1.4	727	1.4	-20	-2.8%	0.0
Forest of Dean	1,323	2.6	1,326	2.6	-3	-0.2%	0.0
Gloucester	2,992	3.9	3,034	4.0	-42	-1.4%	-0.1
Stroud	1,347	2.0	1,440	2.1	-93	-6.5%	-0.1
Tewkesbury	1,094	2.2	1,089	2.2	5	0.5%	0.0

Table 2 shows the change in the claimant count in October 2011 compared to September 2011. Tewkesbury district experienced a slight increase in the number of claimants, while the remaining districts saw a decrease.

Table 3: Analysis of Male Gloucestershire and District Claimant Counts

Male	Oct 11 Number	Oct 11 Rate	Sep 11 Number	Sep 11 Rate	Monthly change	% monthly change	Monthly change of rate
<b>Gloucestershire</b>	6,358	3.4	6,441	3.5	-83	-1.3%	-0.1
Cheltenham	1,498	3.9	1,474	3.9	24	1.6%	0.0
Cotswold	420	1.7	424	1.7	-4	-0.9%	0.0
Forest of Dean	856	3.3	868	3.4	-12	-1.4%	-0.1
Gloucester	2,002	5.2	2,035	5.3	-33	-1.6%	-0.1
Stroud	873	2.5	934	2.7	-61	-6.5%	-0.2
Tewkesbury	709	2.8	706	2.8	3	0.4%	0.0

Table 3 shows the change in the male claimant count in October 2011 compared to September 2011. Cheltenham and Tewkesbury districts experienced an increase in the number of male claimants, while the remaining districts saw a decrease.

Table 4: Analysis of Female Gloucestershire and District Claimant Counts

Female	Oct 11 Number	Oct 11 Rate	Sep 11 Number	Sep 11 Rate	Monthly change	% monthly change	Monthly change of rate
<b>Gloucestershire</b>	3,343	1.8	3,425	1.8	-82	-2.4%	0.0
Cheltenham	740	2.0	776	2.1	-36	-4.6%	-0.1
Cotswold	287	1.1	303	1.2	-16	-5.3%	-0.1
Forest of Dean	467	1.8	458	1.8	9	2.0%	0.0
Gloucester	990	2.6	999	2.6	-9	-0.9%	0.0
Stroud	474	1.4	506	1.5	-32	-6.3%	-0.1
Tewkesbury	385	1.5	383	1.5	2	0.5%	0.0

Table 4 shows the change in the female claimant count in October 2011 compared to September 2011. Forest of Dean and Tewkesbury district experienced a slight increase in the number of female claimants, while the remaining districts saw a decrease.

## PART 4: LOCAL AUTHORITY DISTRICT AND WARD ANALYSIS

This section covers the six districts and a comparison of their constituent wards.

### 4.1 Cheltenham Borough

#### Claimant Rate and Claimant Count

Figure 4: Cheltenham Borough claimant rate over the last year

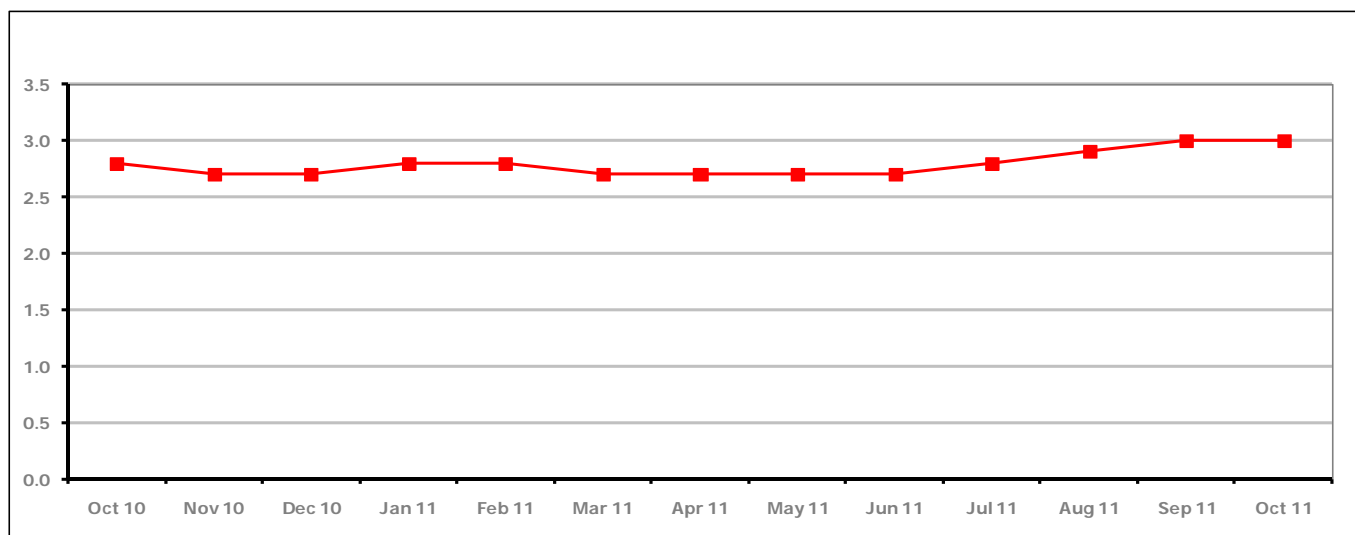


Figure 4 shows the claimant rate in Cheltenham remained the same as last month at 3.0%.

Figure 5: Cheltenham Borough claimants - Month on Month and Year on Year change

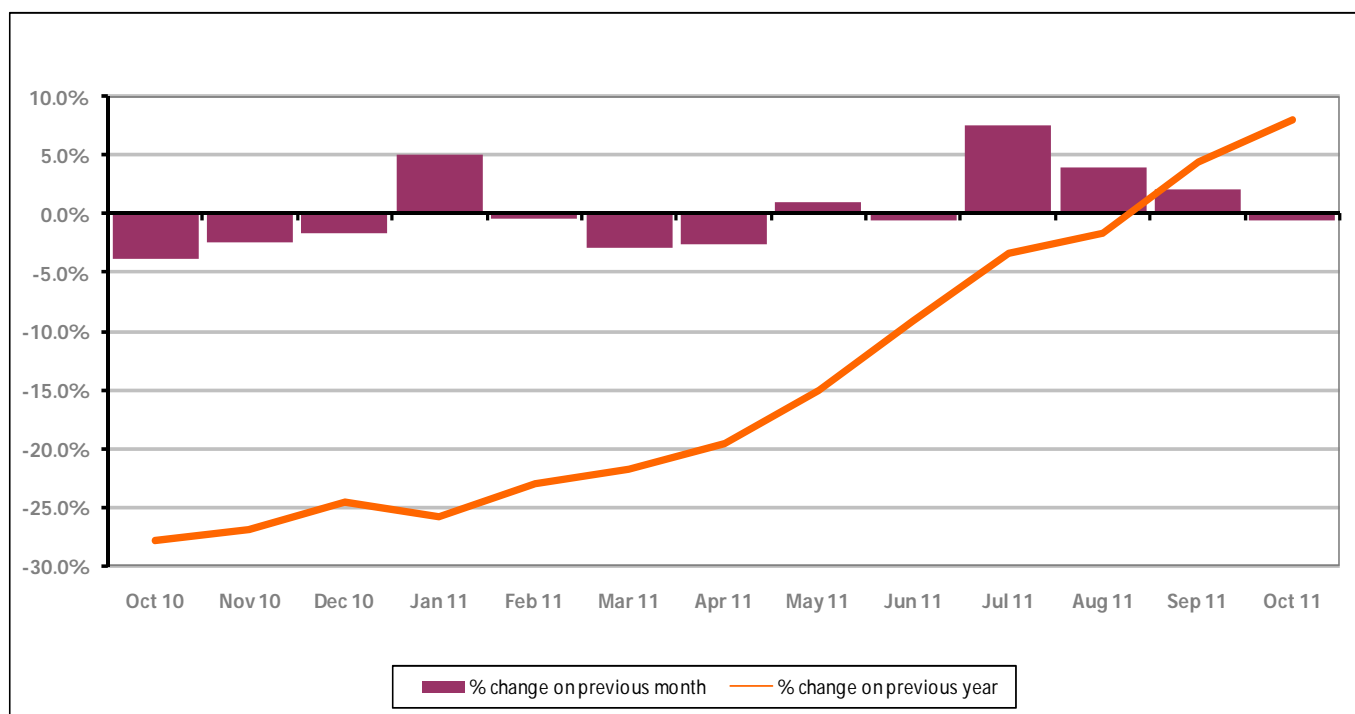


Figure 5 shows the claimant count decreased by -0.5% since last month. The change on the previous year has increased in October 2011 compared to September 2011 to +8.1%.

## PART 4: LOCAL AUTHORITY DISTRICT AND WARD ANALYSIS

## 4.1 Cheltenham Borough continued...

Figure 6: Claimant rates across Cheltenham Borough wards - October 2011

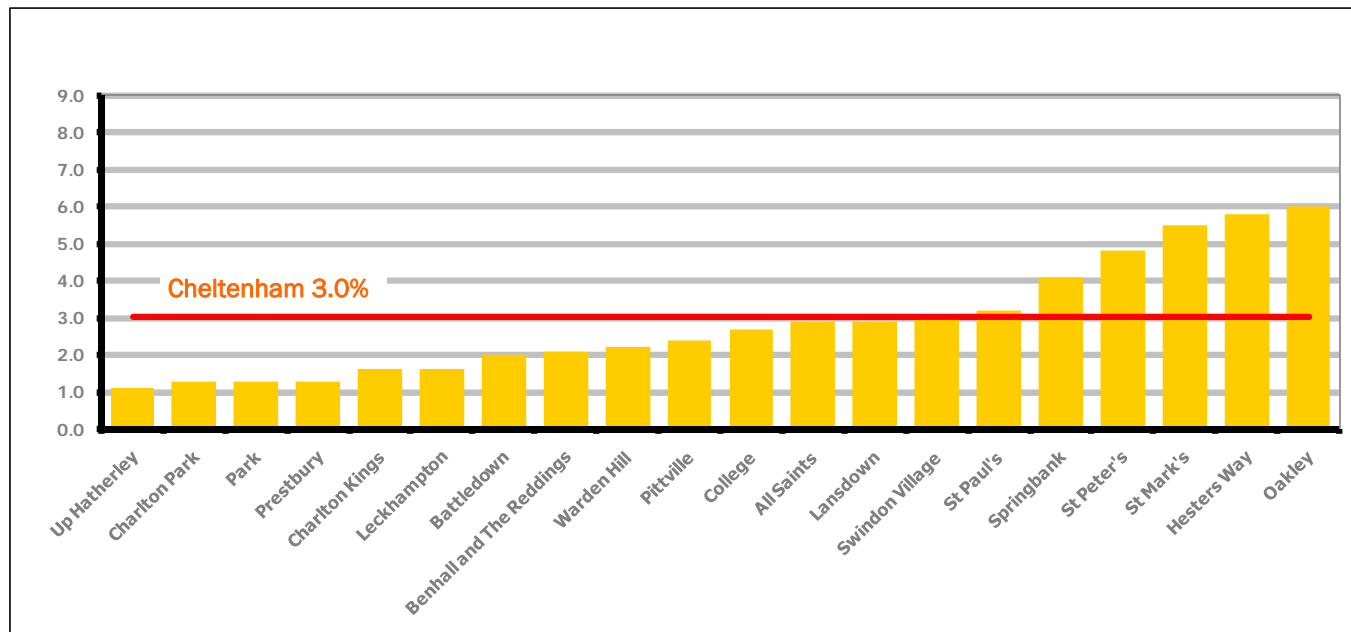
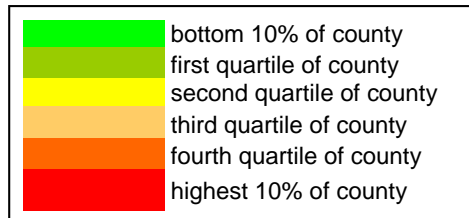


Figure 6 shows the claimant rates for Cheltenham Borough wards. The red line represents the average claimant rate across the Borough of 3.0%. Six wards lie above the average.

Table 5: Analysis of Claimant Count at Cheltenham Borough ward level - October 2011

District	Ward	Rate	Rank*
Cheltenham	Up Hatherley	1.1	23
Cheltenham	Charlton Park	1.3	34
Cheltenham	Park	1.3	34
Cheltenham	Prestbury	1.3	34
Cheltenham	Charlton Kings	1.6	58
Cheltenham	Leckhampton	1.6	58
Cheltenham	Battledown	2.0	77
Cheltenham	Benhall and The Reddings	2.1	83
Cheltenham	Warden Hill	2.2	85
Cheltenham	Pittville	2.4	96
Cheltenham	College	2.7	102
Cheltenham	All Saints	2.9	106
Cheltenham	Lansdown	2.9	106
Cheltenham	Swindon Village	3.0	111
Cheltenham	St Paul's	3.2	117
Cheltenham	Springbank	4.1	125
Cheltenham	St Peter's	4.8	130
Cheltenham	St Mark's	5.5	135
Cheltenham	Hesters Way	5.8	137
Cheltenham	Oakley	6.0	138



\* 1 = "best" and 142 = "worst"

Table 5 shows overall claimant rates for Cheltenham Borough wards and their position relative to all wards in Gloucestershire.

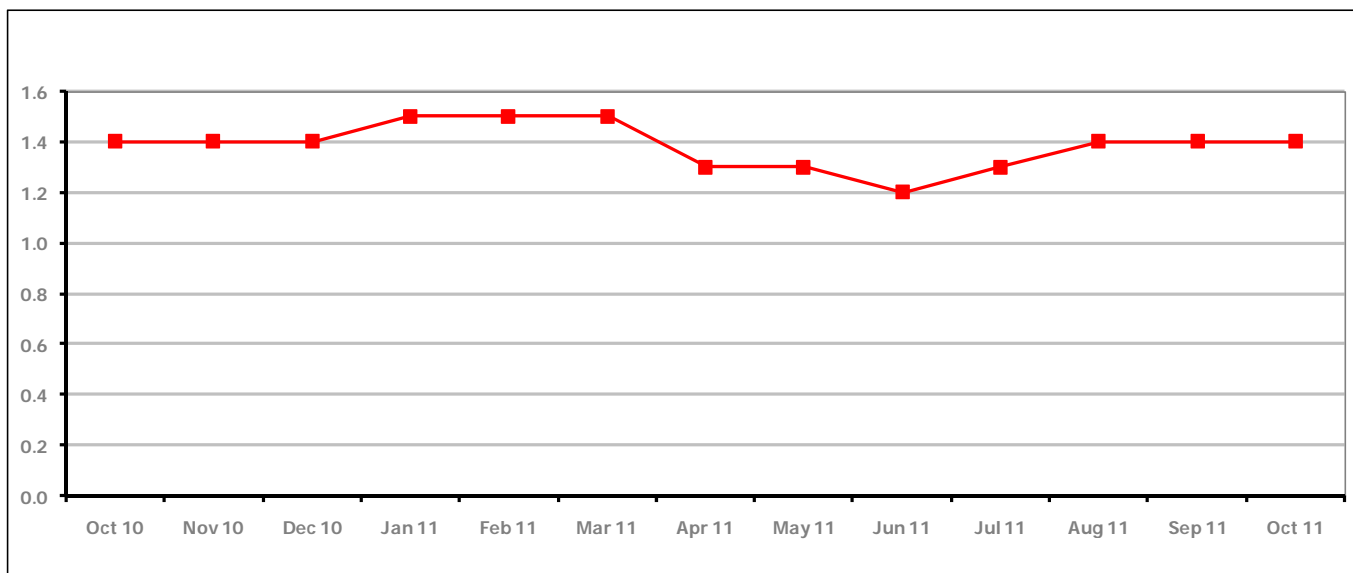
**PART 4: LOCAL AUTHORITY DISTRICT AND WARD ANALYSIS****4.2 Cotswold District****Claimant Rate and Claimant Count***Figure 7: Cotswold District claimant rate over the last year*

Figure 7 shows the claimant rate in Cotswold District remained the same as the last two months at 1.4%.

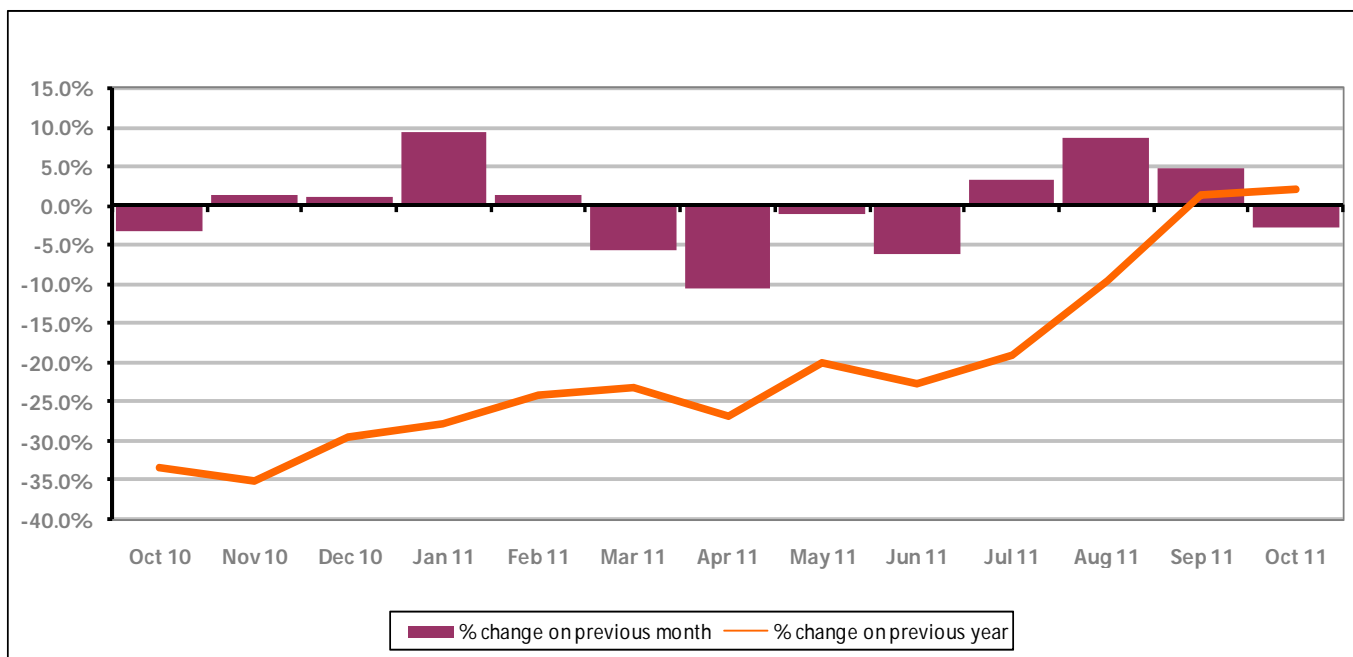
*Figure 8: Cotswold District claimants - Month on Month and Year on Year change*

Figure 8 shows the claimant count decreased by -2.8% since September 2011. The change on the previous year has increased from September 2011 to October 2011 to +2.0%.



## PART 4: LOCAL AUTHORITY DISTRICT AND WARD ANALYSIS

## 4.2 Cotswold District continued...

Figure 9: Claimant rates across Cotswold District wards - October 2011

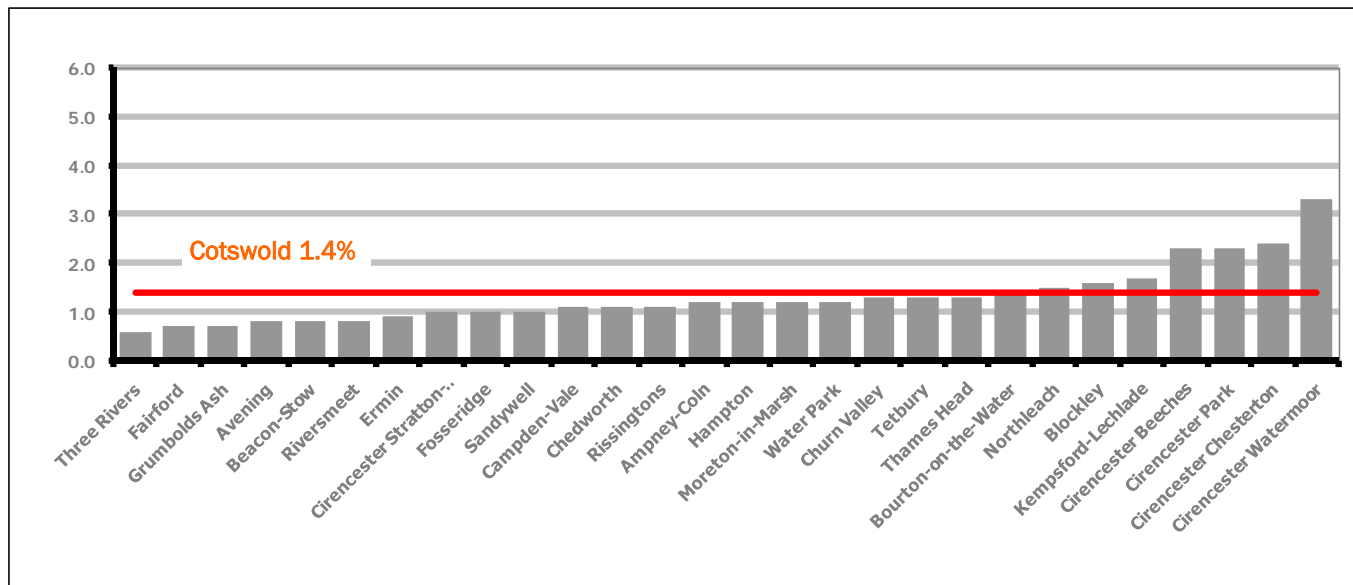
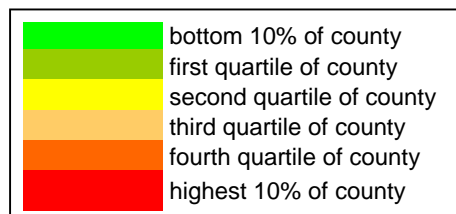


Figure 9 shows the claimant rates for Cotswold District wards. The red line represents the average claimant rate across the District of 1.4%. Seven wards lie above the average.

Table 6: Analysis of Claimant Count at Cotswold District ward level - October 2011

District	Ward	Rate	Rank*
Cotswolds	Three Rivers	0.6	4
Cotswolds	Fairford	0.7	6
Cotswolds	Grumbolds Ash	0.7	6
Cotswolds	Avening	0.8	8
Cotswolds	Beacon-Stow	0.8	8
Cotswolds	Riversmeet	0.8	8
Cotswolds	Ermin	0.9	14
Cotswolds	Cirencester Stratton-Whiteway	1.0	17
Cotswolds	Fosseridge	1.0	17
Cotswolds	Sandywell	1.0	17
Cotswolds	Campden-Vale	1.1	23
Cotswolds	Chedworth	1.1	23
Cotswolds	Risingtons	1.1	23
Cotswolds	Ampney-Coln	1.2	27
Cotswolds	Hampton	1.2	27
Cotswolds	Moreton-in-Marsh	1.2	27
Cotswolds	Water Park	1.2	27
Cotswolds	Churn Valley	1.3	34
Cotswolds	Tetbury	1.3	34
Cotswolds	Thames Head	1.3	34
Cotswolds	Bourton-on-the-Water	1.4	42
Cotswolds	Northleach	1.5	50
Cotswolds	Blockley	1.6	58
Cotswolds	Kempsford-Lechlade	1.7	64
Cotswolds	Cirencester Beeches	2.3	90
Cotswolds	Cirencester Park	2.3	90
Cotswolds	Cirencester Chesterton	2.4	96
Cotswolds	Cirencester Watermoor	3.3	119



\* 1 = "best" and 142 = "worst"

Table 6 shows overall claimant rates for Cotswold District wards and their position relative to all wards in Gloucestershire.

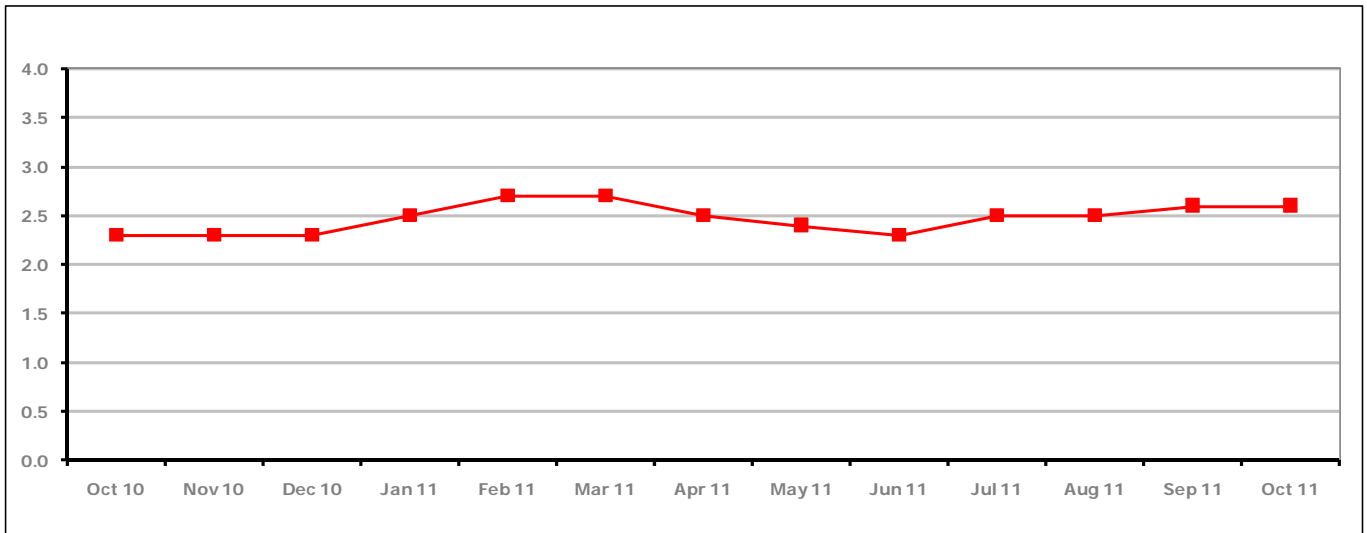
**PART 4: LOCAL AUTHORITY DISTRICT AND WARD ANALYSIS****4.3 Forest of Dean District****Claimant Rate and Claimant Count***Figure 10: Forest of Dean District claimant rate over the last year*

Figure 10 shows the claimant rate in the Forest of Dean remained the same as last month at 2.6%.

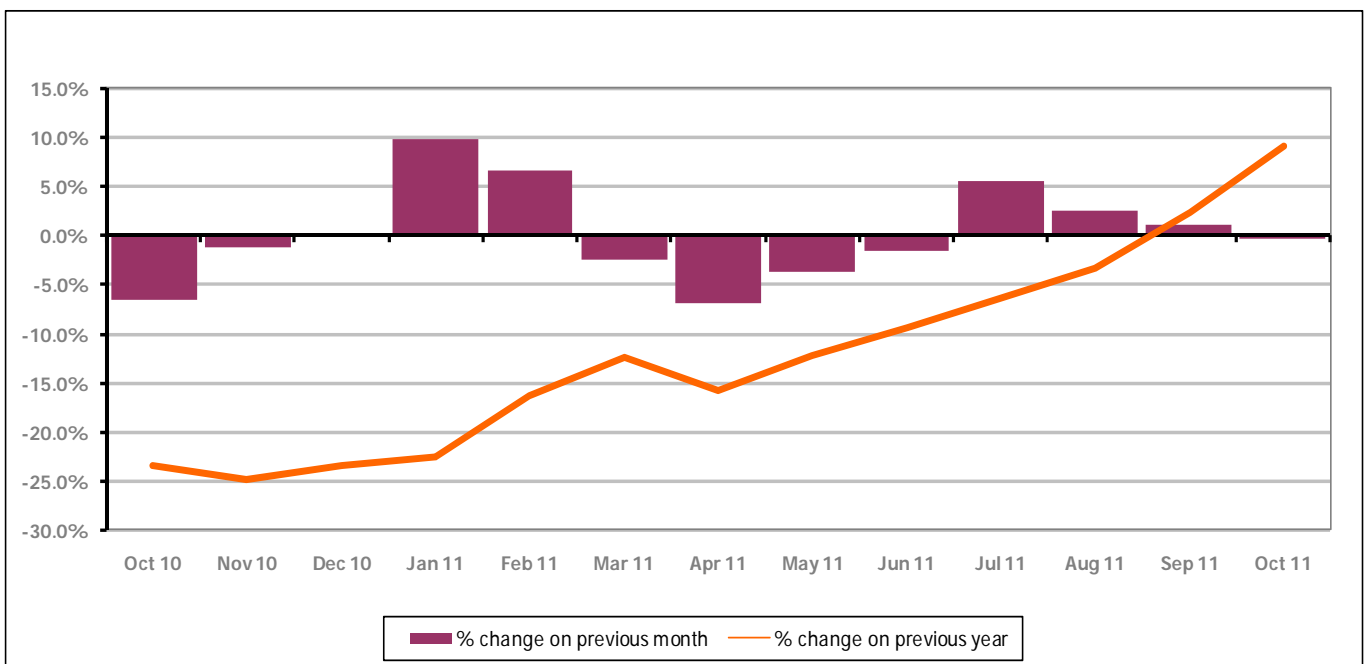
*Figure 11: Forest of Dean District claimants - Month on Month and Year on Year change*

Figure 11 shows the claimant count decreased by -0.2% since September 2011. The change on the previous year increased between September and October 2011 to +9.2%.

## PART 4: LOCAL AUTHORITY DISTRICT AND WARD ANALYSIS

## 4.3 Forest of Dean District continued...

Figure 12: Claimant rates across Forest of Dean District wards - October 2011

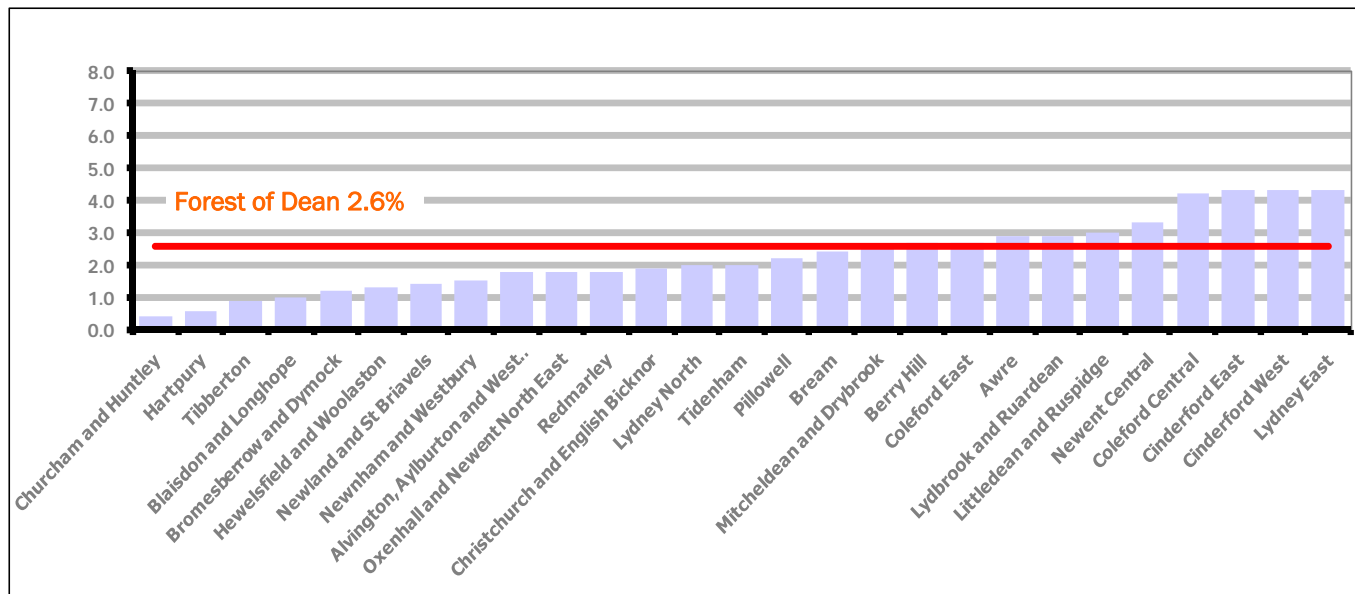
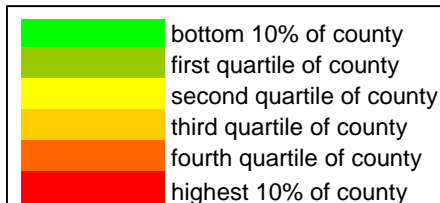


Figure 12 shows the claimant rates for Forest of Dean District wards. The red line represents the average claimant rate across the District of 2.6 %. Ten wards lie above the average.

Table 7: Analysis of Claimant Count at Forest of Dean District ward level - October 2011

District	Ward	Rate	Rank*
Forest	Churcham and Huntley	0.4	2
Forest	Hartpury	0.6	4
Forest	Tibberton	0.9	14
Forest	Blaisdon and Longhope	1.0	17
Forest	Bromesberrow and Dymock	1.2	27
Forest	Hewelsfield and Woolaston	1.3	34
Forest	Newland and St Briavels	1.4	42
Forest	Newnham and Westbury	1.5	50
Forest	Alvington, Aylburton and West Lydney	1.8	68
Forest	Oxenhall and Newent North East	1.8	68
Forest	Redmarley	1.8	68
Forest	Christchurch and English Bicknor	1.9	75
Forest	Lydney North	2.0	77
Forest	Tidenham	2.0	77
Forest	Pillowell	2.2	85
Forest	Bream	2.4	96
Forest	Mitcheldean and Drybrook	2.6	99
Forest	Berry Hill	2.7	102
Forest	Coleford East	2.7	102
Forest	Awre	2.9	106
Forest	Lydbrook and Ruardean	2.9	106
Forest	Littledean and Ruspidge	3.0	111
Forest	Newent Central	3.3	119
Forest	Coleford Central	4.2	126
Forest	Cinderford East	4.3	127
Forest	Cinderford West	4.3	127
Forest	Lydney East	4.3	127



\* 1 = "best" and 142 = "worst"

Table 7 shows overall claimant rates for the Forest of Dean District wards and their position relative to all wards in Gloucestershire.

## PART 4: LOCAL AUTHORITY DISTRICT AND WARD ANALYSIS

## 4.4 Gloucester City

## Claimant Rate and Claimant Count

Figure 13: Gloucester City claimant rate over the last year

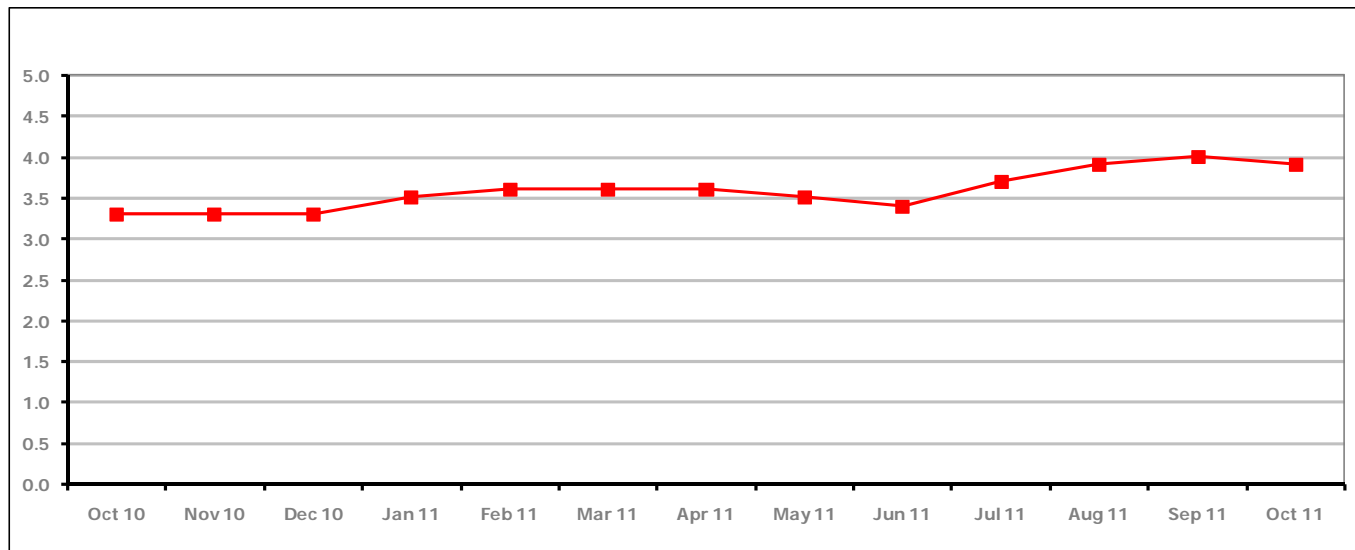


Figure 13 shows the claimant rate for Gloucester City decreased in October 2011 to 3.9%.

Figure 14: Gloucester City claimants - Month on Month and Year on Year change

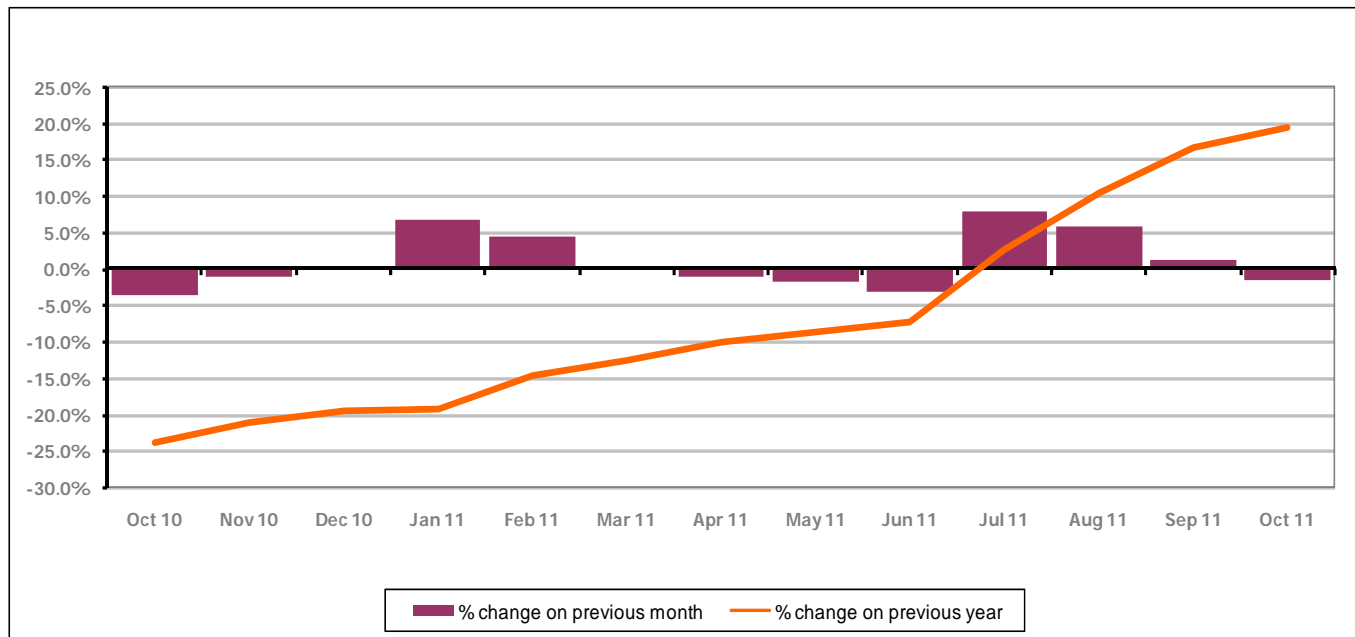


Figure 14 shows the monthly claimant count decreased by -1.4% since September 2011. The change on the previous year has increased between September 2011 and October 2011 to +19.4%.

## PART 4: LOCAL AUTHORITY DISTRICT AND WARD ANALYSIS

## 4.4 Gloucester City continued...

Figure 15: Claimant rates across Gloucester City wards - October 2011

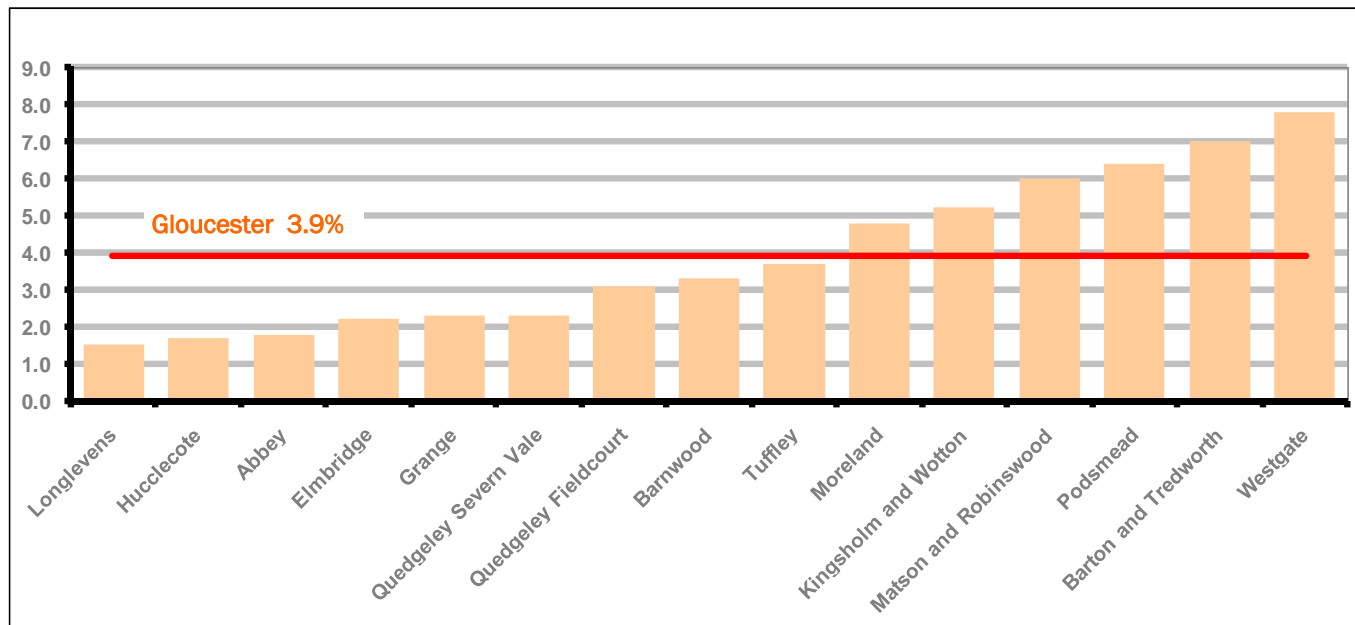
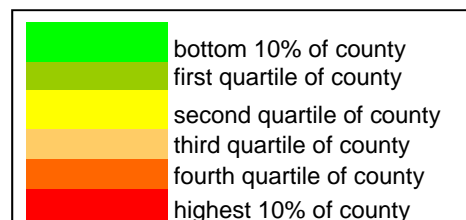


Figure 15 shows the claimant rates for Gloucester City district wards. The red line represents the average claimant rate across the City of 3.9%. Six wards lie above the average.

Table 8: Analysis of Claimant Count at Gloucester City ward level - October 2011

District	Ward	Rate	Rank*
Gloucester	Longlevens	1.5	50
Gloucester	Hucclecote	1.7	64
Gloucester	Abbey	1.8	68
Gloucester	Elmbridge	2.2	85
Gloucester	Grange	2.3	90
Gloucester	Quedgeley Severn Vale	2.3	90
Gloucester	Quedgeley Fieldcourt	3.1	114
Gloucester	Barnwood	3.3	119
Gloucester	Tuffley	3.7	124
Gloucester	Moreland	4.8	130
Gloucester	Kingsholm and Wotton	5.2	133
Gloucester	Matson and Robinswood	6.0	138
Gloucester	Podsmead	6.4	140
Gloucester	Barton and Tredworth	7.0	141
Gloucester	Westgate	7.8	142



\* 1 = "best" and 142 = "worst"

Table 8 shows overall claimant rates for Gloucester City wards and their position relative to all wards in Gloucestershire.

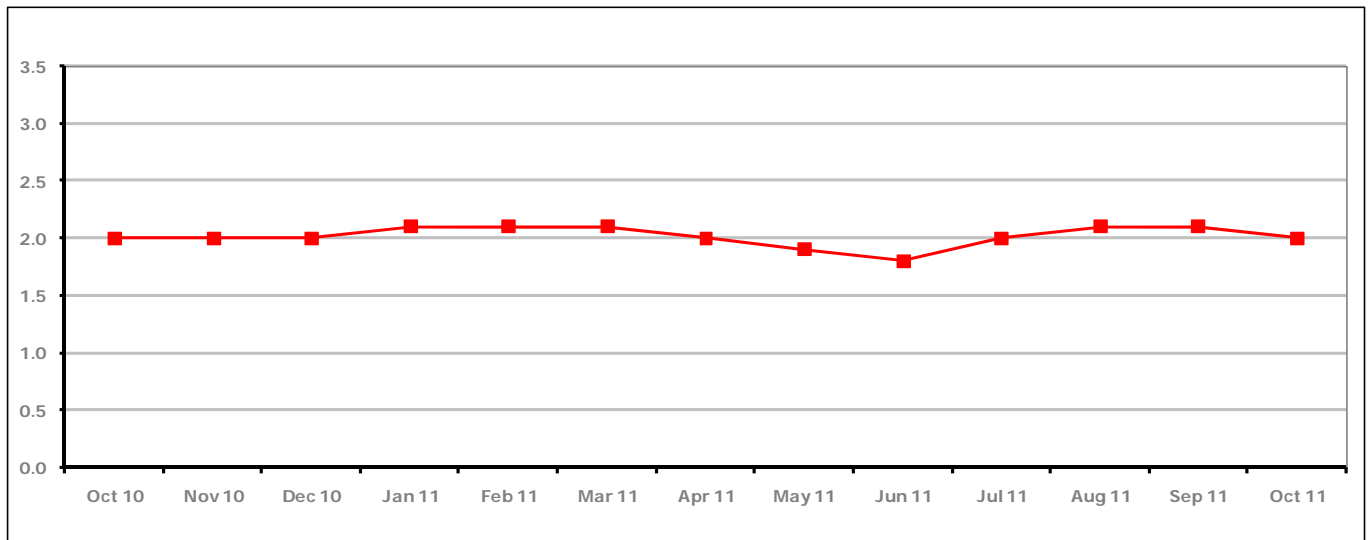
**PART 4: LOCAL AUTHORITY DISTRICT AND WARD ANALYSIS****4.5 Stroud District****Claimant Rate and Claimant Count***Figure 16: Stroud District claimant rate over the last year*

Figure 16 shows the claimant rate for Stroud District declined in October 2011 to 2.0%.

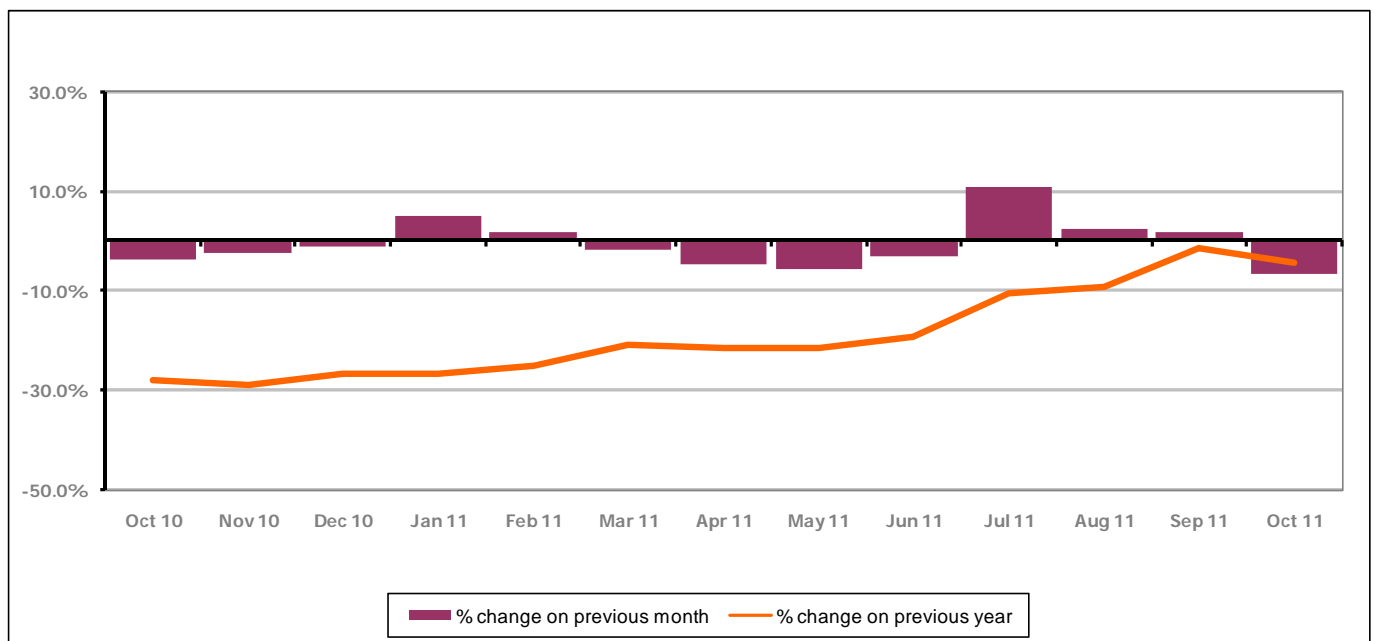
*Figure 17: Stroud District claimants - Month on Month and Year on Year change*

Figure 17 shows the monthly claimant count decreased by -6.5% since September 2011. The change on the previous year has increased between September 2011 and October 2011 to -4.4%.

## PART 4: LOCAL AUTHORITY AND DISTRICT ANALYSIS

## 4.5 Stroud District continued...

Figure 18: Claimant rates across Stroud District wards - October 2011

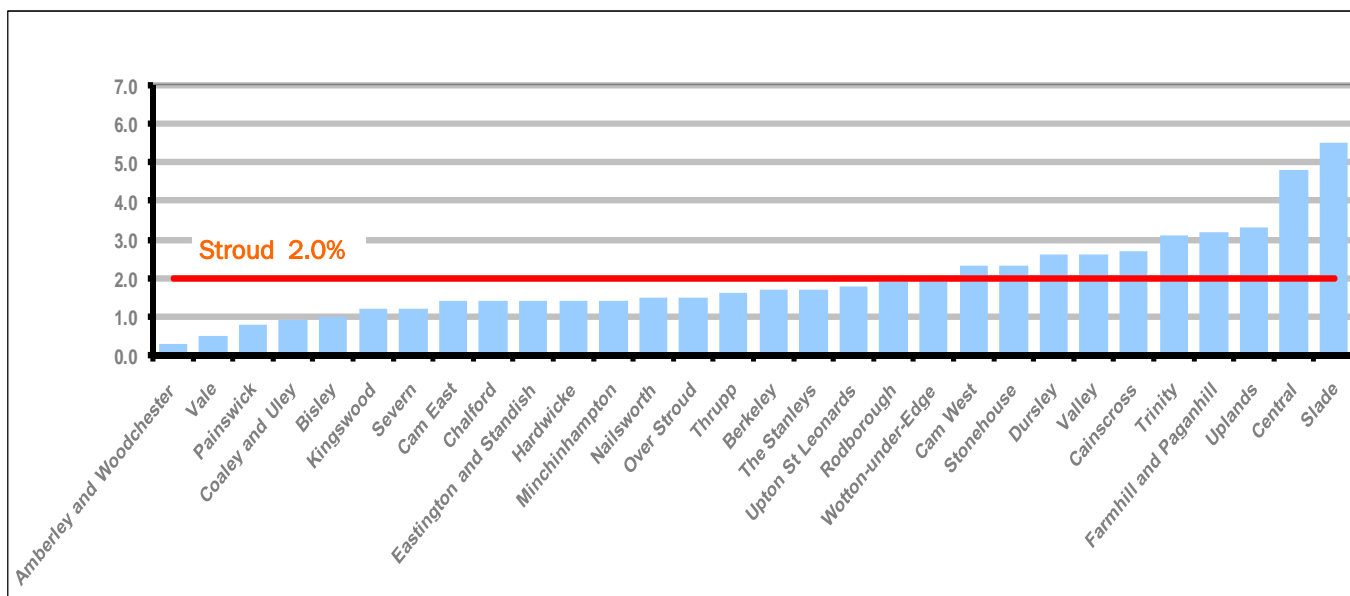
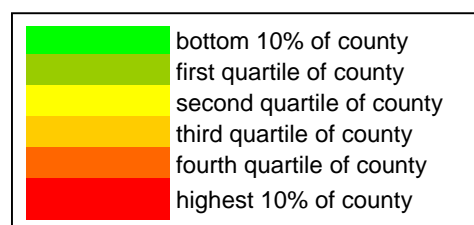


Figure 18 shows the claimant rates in Stroud District wards. The red line represents the average claimant rate across the District of 2.0%. Ten wards are above the average.

Table 9: Analysis of Claimant Count at Stroud District ward level - October 2011

District	Ward	Rate	Rank*
Stroud	Amberley and Woodchester	0.3	1
Stroud	Vale	0.5	3
Stroud	Painswick	0.8	8
Stroud	Coaley and Uley	0.9	14
Stroud	Bisley	1.0	17
Stroud	Kingswood	1.2	27
Stroud	Severn	1.2	27
Stroud	Cam East	1.4	42
Stroud	Chalford	1.4	42
Stroud	Eastington and Standish	1.4	42
Stroud	Hardwicke	1.4	42
Stroud	Minchinhampton	1.4	42
Stroud	Nailsworth	1.5	50
Stroud	Over Stroud	1.5	50
Stroud	Thrupp	1.6	58
Stroud	Berkeley	1.7	64
Stroud	The Stanleys	1.7	64
Stroud	Upton St Leonards	1.8	68
Stroud	Rodborough	1.9	75
Stroud	Wotton-under-Edge	2.0	77
Stroud	Cam West	2.3	90
Stroud	Stonehouse	2.3	90
Stroud	Dursley	2.6	99
Stroud	Valley	2.6	99
Stroud	Cainscross	2.7	102
Stroud	Trinity	3.1	114
Stroud	Farmhill and Paganhill	3.2	117
Stroud	Uplands	3.3	119
Stroud	Central	4.8	130
Stroud	Slade	5.5	135



\* 1 = "best" and 142 = "worst"

Table 9 shows overall claimant rates for Stroud District wards and their position relative to all wards in Gloucestershire.

## PART 4: LOCAL AUTHORITY DISTRICT AND WARD ANALYSIS

## 4.6 Tewkesbury District

## Claimant Rate and Claimant Count

Figure 19: Tewkesbury District claimant rate over the last year

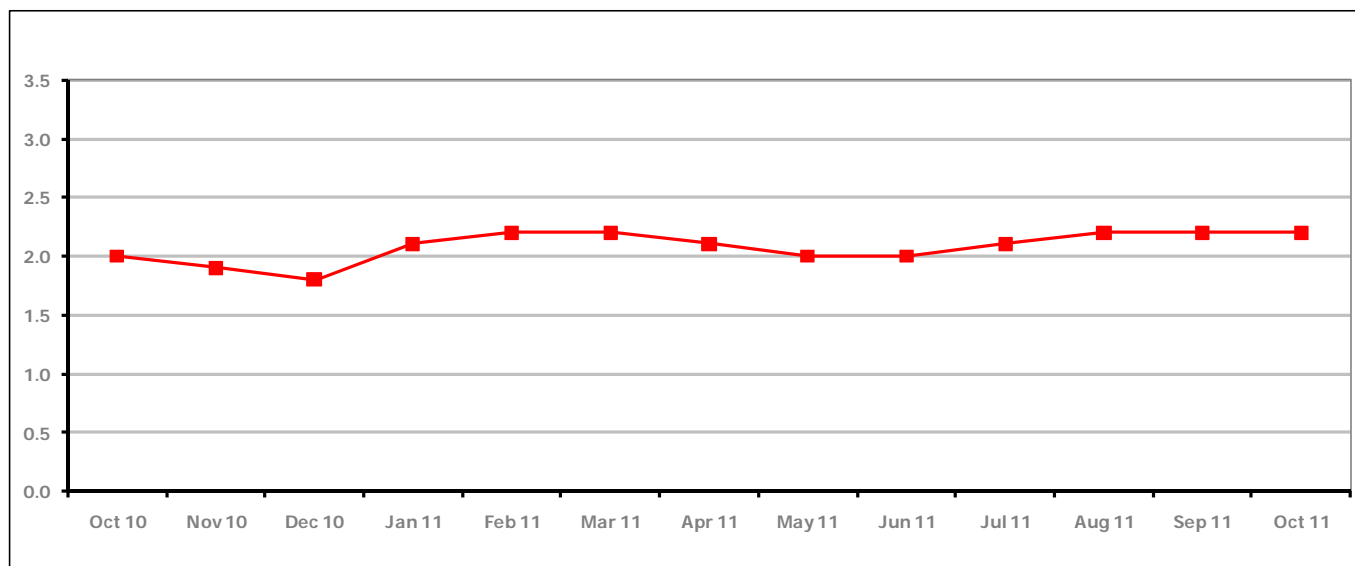


Figure 19 shows the claimant rate for Tewkesbury District remained the same as the last two months at 2.2%.

Figure 20: Tewkesbury District claimants - Month on Month and Year on Year change

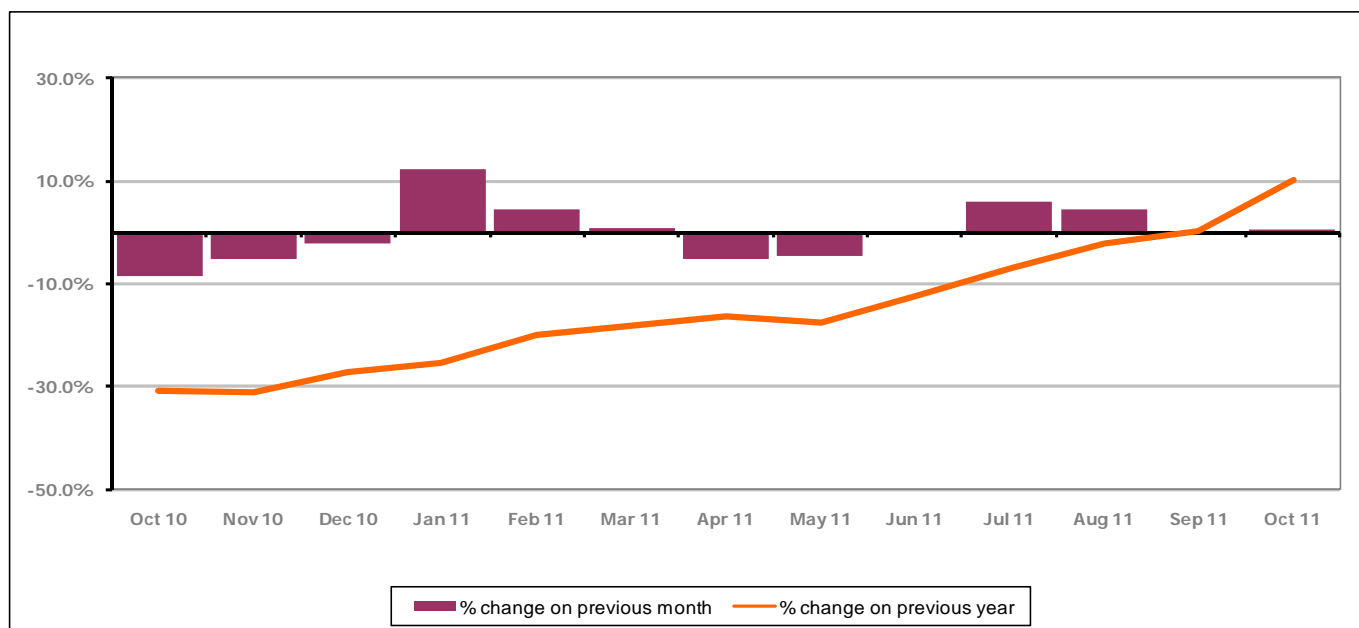


Figure 20 shows that the monthly claimant count increased in October 2011 by +0.5%. The change on the previous year increased between October 2011 and September 2011 to +10.2%.



## PART 4: LOCAL AUTHORITY AND DISTRICT ANALYSIS

## 4.6 Tewkesbury District continued...

Figure 21: Claimant rates across Tewkesbury District wards - October 2011

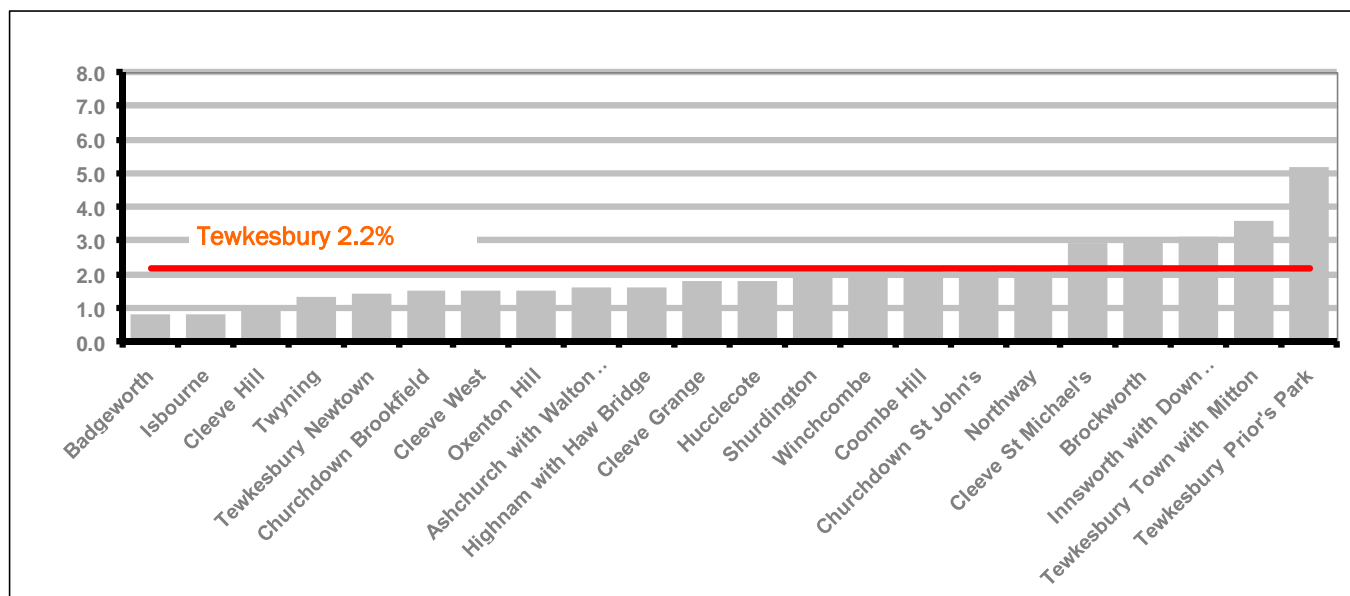
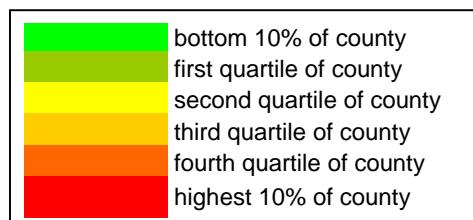


Figure 21 shows the claimant rates in Tewkesbury District wards. The red line represents the average claimant rate across the District of 2.2% and five wards are above the average.

Table 10: Analysis of Claimant Count at Tewkesbury District level - October 2011

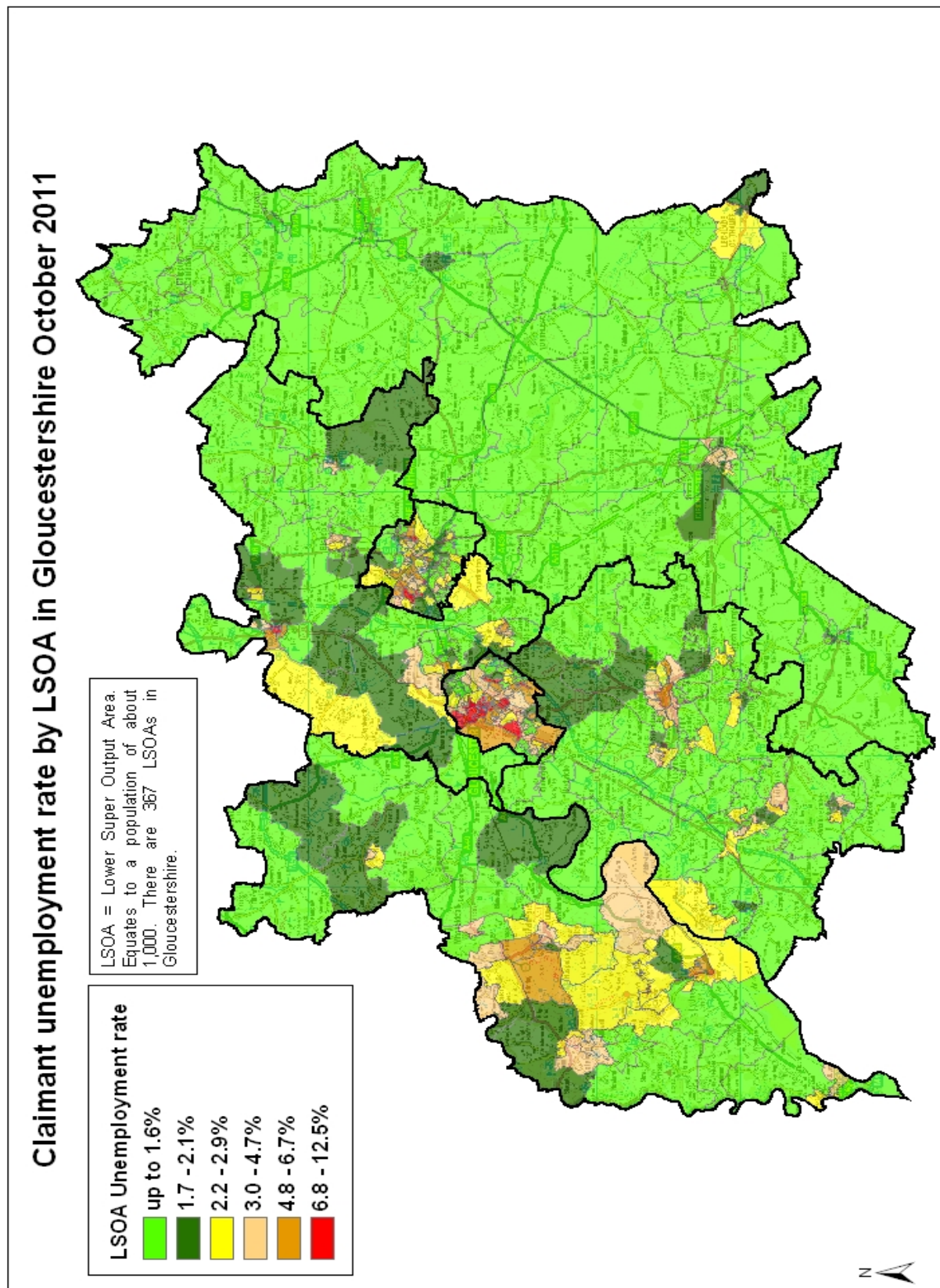
District	Ward	Rate	Rank*
Tewkesbury	Badgeworth	0.8	8
Tewkesbury	Isbourne	0.8	8
Tewkesbury	Cleeve Hill	1.0	17
Tewkesbury	Twynning	1.3	34
Tewkesbury	Tewkesbury Newtown	1.4	42
Tewkesbury	Churchdown Brookfield	1.5	50
Tewkesbury	Cleeve West	1.5	50
Tewkesbury	Oxenton Hill	1.5	50
Tewkesbury	Ashchurch with Walton Cardiff	1.6	58
Tewkesbury	Highnam with Haw Bridge	1.6	58
Tewkesbury	Cleeve Grange	1.8	68
Tewkesbury	Hucclecote	1.8	68
Tewkesbury	Shurdington	2.0	77
Tewkesbury	Winchcombe	2.0	77
Tewkesbury	Coombe Hill	2.1	83
Tewkesbury	Churchdown St John's	2.2	85
Tewkesbury	Northway	2.2	85
Tewkesbury	Cleeve St Michael's	2.9	106
Tewkesbury	Brockworth	3.0	111
Tewkesbury	Innsworth with Down Hatherley	3.1	114
Tewkesbury	Tewkesbury Town with Mitton	3.6	123
Tewkesbury	Tewkesbury Prior's Park	5.2	133



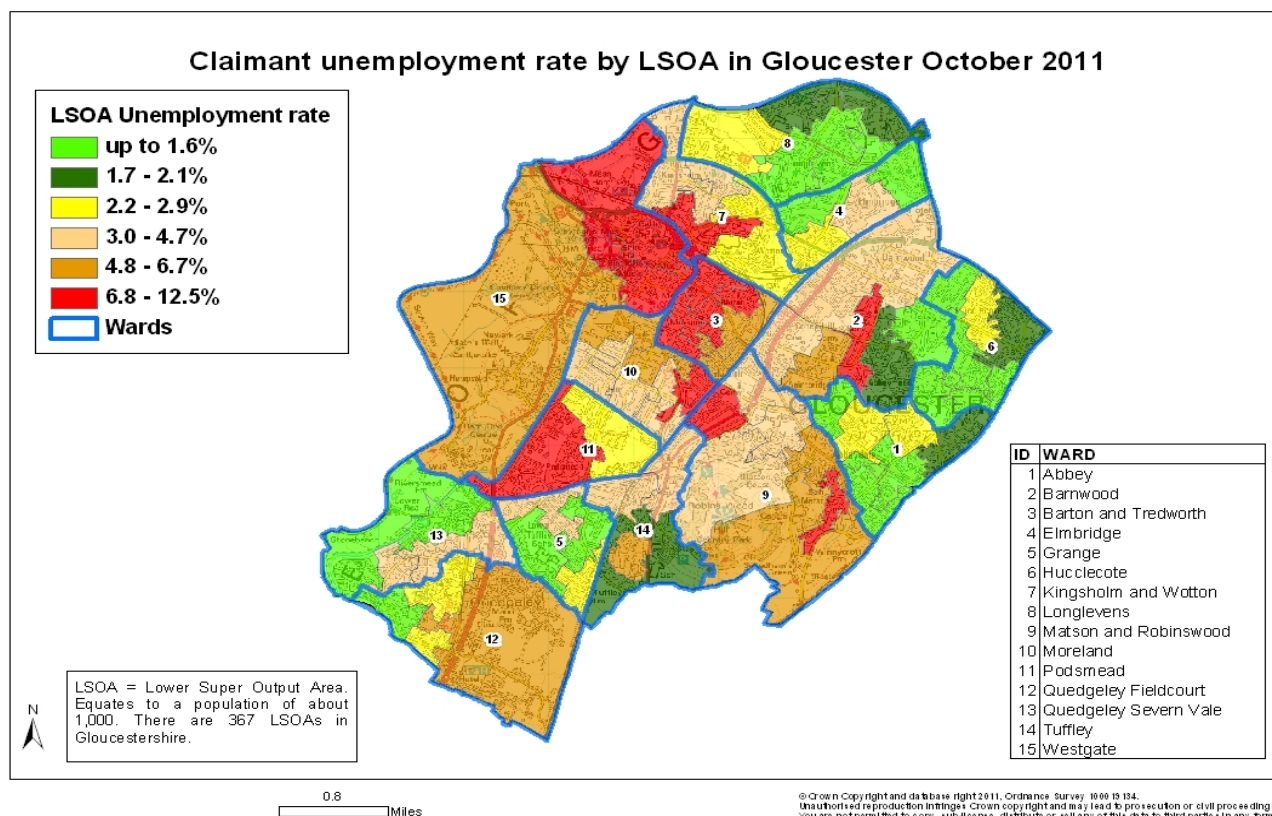
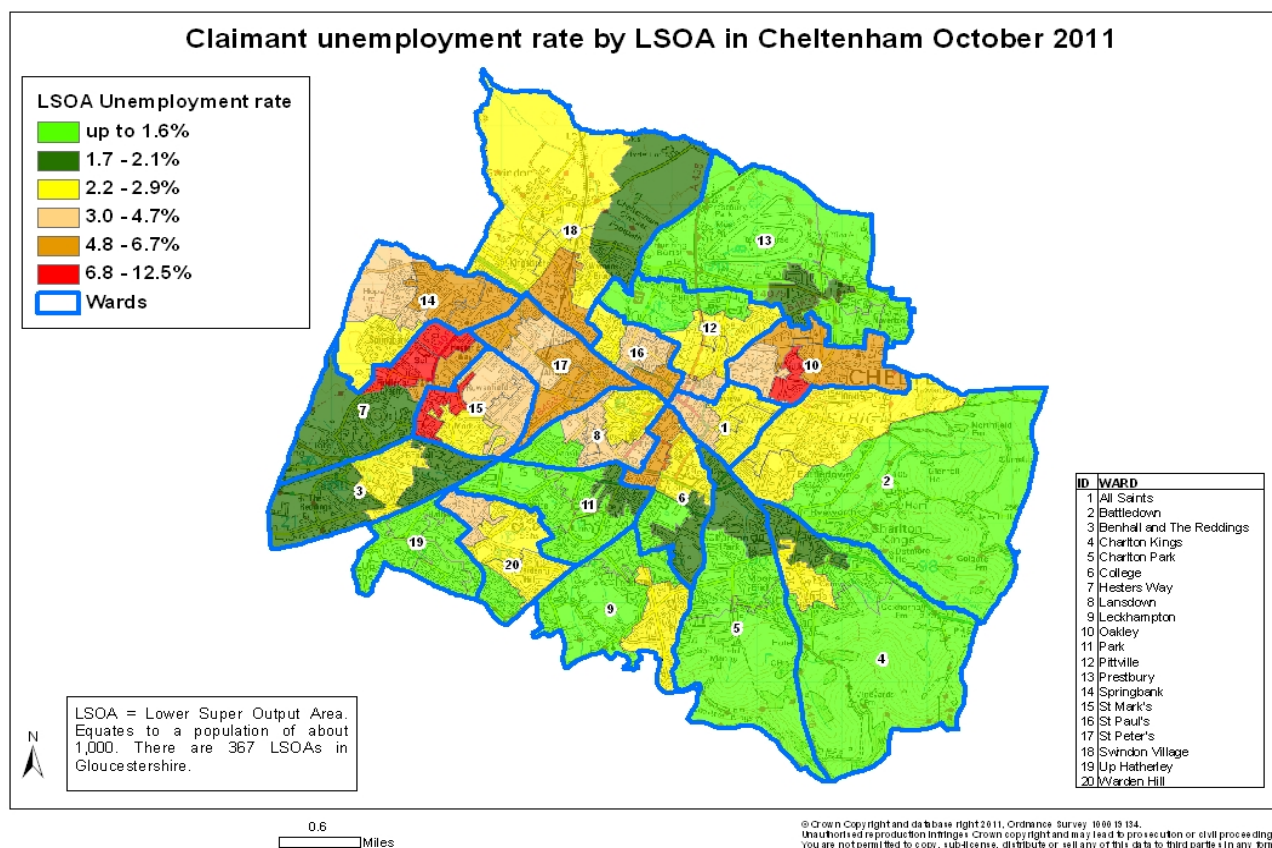
\* 1 = "best" and 142 = "worst"

Table 10 shows overall claimant rates for Tewkesbury District wards and their position relative to all wards in Gloucestershire.

## PART 5: MAP SHOWING DISTRIBUTION OF CLAIMANT RATE ACROSS GLOUCESTERSHIRE



## PART 5: MAP SHOWING DISTRIBUTION OF CLAIMANT RATE ACROSS GLOUCESTERSHIRE





## PART 6: YOUNG PEOPLE NOT IN EDUCATION, EMPLOYMENT OR TRAINING (NEET) IN GLOUCESTERSHIRE

Data provided by Prospects, the Connexions service in Gloucestershire on the situation of young people (16-18) in Gloucestershire who are not in education, employment or formal training.

Connexions Gloucestershire is required to report performance with the 16-18 age range against nationally defined criteria for counting the NEET group. The NEET group includes young people actively seeking education, employment or training as well as those young people who are either not yet ready or who are unable to access these opportunities because of their personal circumstances. The figures quoted below include young people in both of these categories.

### Summary

As at the end of October 2011 there were 953 young people aged 16-18 not in education, employment or training in Gloucestershire and this figure translates into an adjusted (\*) 16-18 NEET population of 5.7%. The total number of NEET increased by 229 young people in October 2011 compared to September 2011. All districts saw an increase in their NEET figure.

### Total NEET Group by District Area

#### October 2011 NEET Data

	Cheltenham	Cotswold	Forest	Gloucester	Stroud	Tewkesbury	Total
Number of NEET	<b>196</b>	<b>72</b>	<b>141</b>	<b>284</b>	<b>147</b>	<b>113</b>	<b>953</b>
Cohort	2968	2349	2552	5190	3224	2120	<b>18403</b>
% NEET	6.6%	3.1%	5.5%	5.5%	4.6%	5.3%	<b>5.7%</b>

If you would like to receive any further information on Gloucestershire's NEET strategy then please contact [Ruth.Critchlow@gloucestershire.gov.uk](mailto:Ruth.Critchlow@gloucestershire.gov.uk) or telephone 01452 551267.

(\*) Adjustment includes a proportion of young people aged 16-18 whose outcomes are not-known to Connexions Gloucestershire