

Unemployment Bulletin

Issue 139 February 2020

Contents

Part 1: Summary A summary of unemployment data at district, County, regional and national level	1
Part 2: County Unemployment figures for the County compared to the South West and the rest of the UK	3
Part 3: Districts A comparative break down of unemployment figures by district	4
Part 4: Wards Further breakdown of unemployment figures by ward:	
Cheltenham	6
Cotswolds	8
Forest of Dean	10
Gloucester	12
Stroud	14
Tewkesbury	16
Part 5: Map Distribution of claimant rate across Gloucestershire	18
Part 6: Youth Unemployment Unemployment data for the 18-24 year old age group	20
Part 7: Young People Data about Young People Not in Education, Employment or Training (NEET)	21

The Claimant Count is a measure of the number of people who are unemployed and claiming benefits. From 1996 until the recent introduction of Universal Credit, this was based on the number of people claiming Jobseeker's Allowance. However, since its introduction some unemployment benefit claimants will be claiming Universal Credit instead. **To reflect this change, the Claimant Count has been expanded to include people claiming Jobseeker's Allowance plus those who claim Universal Credit and who are searching for work.**

Gloucestershire is in the process of transitioning to full Universal Credit. This means a broader span of claimants will be required to look for work than previously under Jobseekers Allowance. As more people are brought within the coverage of Universal Credit, the Claimant Count is set to rise noticeably over time. This will happen irrespective of how the economy performs and is a feature of the design of Universal Credit which brings additional groups of people into 'Searching for Work' conditionality (and therefore the Claimant Count), to help encourage and support these claimants into work.

For more information about Universal Credit please see the [ONS website](https://www.ons.gov.uk/universal-credit).

INTRODUCTION

The Unemployment Bulletin provides a monthly update on unemployment data for Gloucestershire, the South West region and the United Kingdom. It is produced by the Data & Analysis Team in the County Council's Planning, Performance and Change function. The data are sourced from the Office for National Statistics via Nomis (www.nomis.co.uk). All data are rounded to the nearest 5 and may not precisely add to the sum of the number of people claiming JSA, and the number of people claiming Universal Credit required to seek work, due to independent rounding.

PART 1: SUMMARY

The claimant rate in Gloucestershire was 2.1% in February 2020. The South West and UK rates increased to 2.3% and 3.0% respectively. Gloucestershire's rate was 0.2% lower than the South West average of 2.3%, and 0.9% lower than the UK average of 3.0%.

The claimant count in Gloucestershire in February 2020 increased by 240 people. The amount of people claiming in February 2020 was 3.1% higher than the number in January 2020. This compares to a 5.0% increase in the South West and a 4.4% increase for the UK.

Produced by:

Data & Analysis Team
Planning, Performance and Change
Gloucestershire County Council
March 2020

DISTRICTS AT A GLANCE

At a glance unemployment information grouped by district. Includes:

Claim count: Total number of people claiming Job Seekers Allowance and Universal Credit who are not in work in February 2020

Compared to last month: How much larger/smaller February's claimant count is compared to January expressed as a %

Claimant rate: The % of working age population claiming Job Seekers Allowance and Universal Credit who are not in work in February 2020

Highest claiming ward: The ward with the highest claim count in that district and the rate

CHELTENHAM BOROUGH

Claim count:	1,645
Compared to last month:	5.4%
Claimant rate:	2.2%
Highest claiming ward	Hesters Way (5.2%)

GLOUCESTER CITY

Claim count:	2,340
Compared to last month:	2.4%
Claimant rate:	2.9%
Highest claiming wards	Westgate (5.8%)

COTSWOLD DISTRICT

Claim count:	720
Compared to last month:	1.4%
Claimant rate:	1.4%
Highest claiming ward	Watermoor (3.7%)

STROUD DISTRICT

Claim count:	1,090
Compared to last month:	2.3%
Claimant rate:	1.5%
Highest claiming wards	Slade (4.2%)

FOREST OF DEAN

Claim count:	1,175
Compared to last month:	3.5%
Claimant rate:	2.3%
Highest claiming ward	Lydney East (4.7%)

TEWKESBURY BOROUGH

Claim count:	985
Compared to last month:	2.6%
Claimant rate:	1.8%
Highest claiming ward	Tewkesbury Prior's Park (3.9%)

PART 2: UK, SW AND GLOUCESTERSHIRE INDICATORS

The unemployment situation in Gloucestershire compared to the South West and the UK.

Claimant Rate

Figure 1: Claimant Rate for Gloucestershire, the South West and UK over the past year

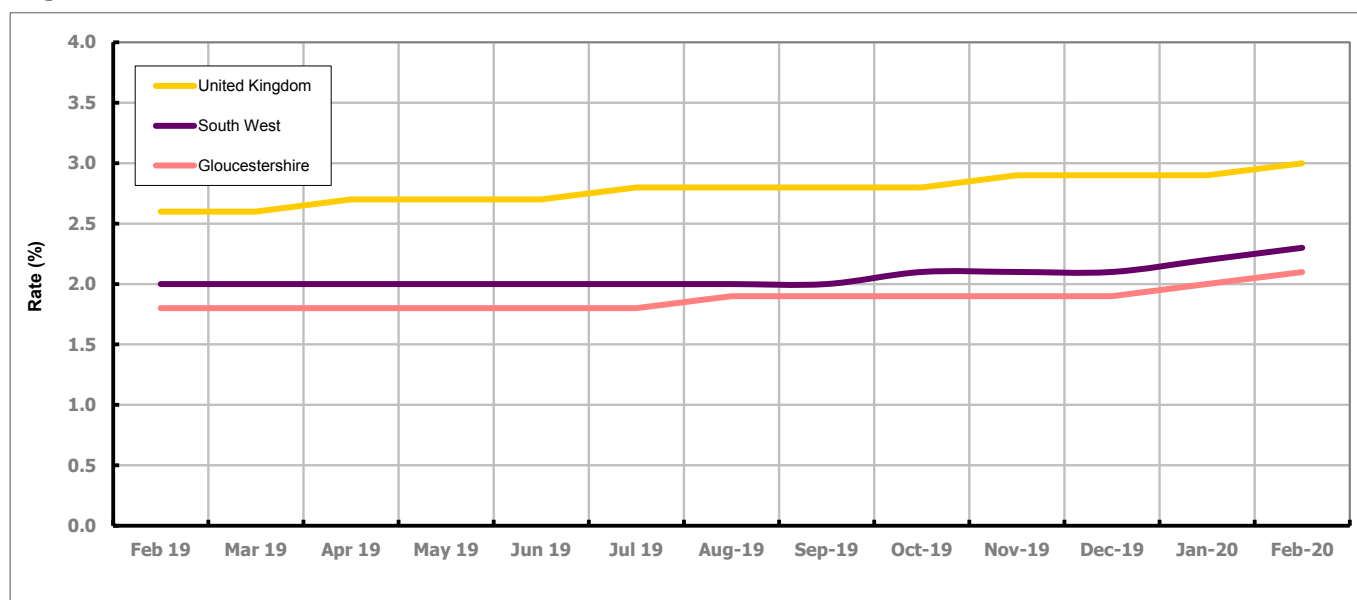


Figure 1 shows the claimant rate for Gloucestershire at 2.1% in February 2020. The Gloucestershire rate has been lower than the South West average since December 2015, with the exception of April and May 2016 when it was the same. It has been persistently lower by approximately 0.9% against the UK average.

Claimant Count

Table 1: Analysis of UK, South West and Gloucestershire Claimant Counts

Area	Claimant Count in February 2020	% change on January 2020	Consecutive months increasing
UK	1,268,625	4.4%	19
South West	76,400	5.0%	4
Gloucestershire	7,955	3.1%	4

Table 1 shows that in February 2020, the number of claimants in Gloucestershire was 3.1% higher than the number in January 2020.

PART 3: LOCAL AUTHORITY DISTRICT ANALYSIS

Claimant Rate and Claimant Count

Figure 2: Claimant Rate (%) across Gloucestershire - February 2020

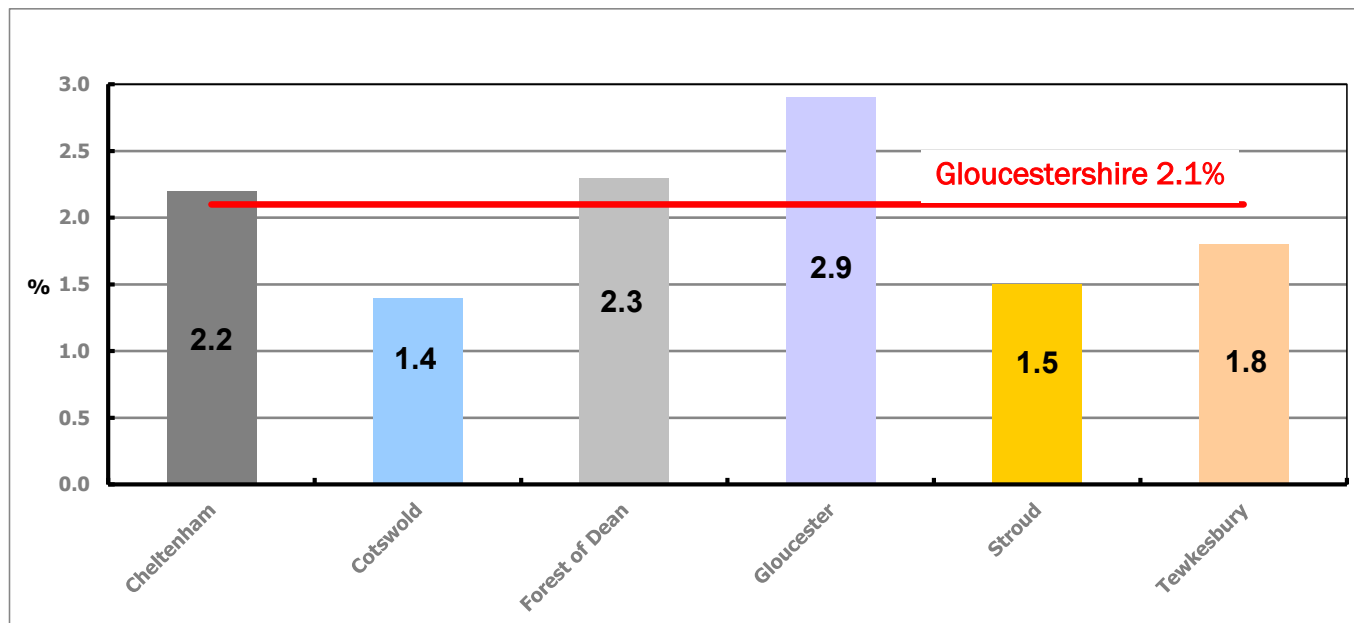


Figure 2 shows the claimant rate for February 2020 in Gloucestershire. Between January 2020 and February 2020 the rate increased in all districts, except Cotswold and Stroud which remained the same.

Table 2: Analysis of Gloucestershire and District Claimant Counts

Total	Feb 20 Number	Feb 20 Rate	Jan 20 Number	Jan 20 Rate	Monthly change	% monthly change	Monthly change of rate
Gloucestershire	7,955	2.1	7,715	2.0	240	3.1%	0.1
Cheltenham	1,645	2.2	1,560	2.1	85	5.4%	0.1
Cotswold	720	1.4	710	1.4	10	1.4%	0.0
Forest of Dean	1,175	2.3	1,135	2.2	40	3.5%	0.1
Gloucester	2,340	2.9	2,285	2.8	55	2.4%	0.1
Stroud	1,090	1.5	1,065	1.5	25	2.3%	0.0
Tewkesbury	985	1.8	960	1.7	25	2.6%	0.1

Table 2 shows the change in the claimant count in February 2020 compared to January 2020. All districts saw an increase in the number of claimants.

Table 3: Analysis of Male Gloucestershire and District Claimant Counts

Male	Feb 20 Number	Feb 20 Rate	Jan 20 Number	Jan 20 Rate	Monthly change	% monthly change	Monthly change of rate
Gloucestershire	4,570	2.4	4,365	2.3	205	4.7%	0.1
Cheltenham	1,005	2.7	950	2.6	55	5.8%	0.1
Cotswold	395	1.6	365	1.5	30	8.2%	0.1
Forest of Dean	655	2.6	610	2.4	45	7.4%	0.2
Gloucester	1,395	3.4	1,345	3.3	50	3.7%	0.1
Stroud	580	1.6	565	1.6	15	2.7%	0.0
Tewkesbury	545	2.0	525	1.9	20	3.8%	0.1

Table 3 shows the change in the male claimant count in February 2020 compared to January 2020. All districts saw an increase in the number of male claimants.

Table 4: Analysis of Female Gloucestershire and District Claimant Counts

Female	Feb 20 Number	Feb 20 Rate	Jan 20 Number	Jan 20 Rate	Monthly change	% monthly change	Monthly change of rate
Gloucestershire	3,385	1.7	3,350	1.7	35	1.0%	0.0
Cheltenham	640	1.7	610	1.7	30	4.9%	0.0
Cotswold	325	1.2	340	1.3	-15	-4.4%	-0.1
Forest of Dean	520	2.0	530	2.0	-10	-1.9%	0.0
Gloucester	945	2.3	935	2.3	10	1.1%	0.0
Stroud	510	1.4	500	1.4	10	2.0%	0.0
Tewkesbury	445	1.6	435	1.6	10	2.3%	0.0

Table 4 shows the change in the female claimant count in February 2020 compared to January 2020. All districts saw an increase in the number of female claimants except Cotswold and the Forest of Dean which saw a decrease.

PART 4: LOCAL AUTHORITY DISTRICT AND WARD ANALYSIS

This section covers the six districts and a comparison of their constituent wards.

4.1 Cheltenham Borough

Claimant Rate and Claimant Count

Figure 3: Cheltenham Borough claimant rate over the last year

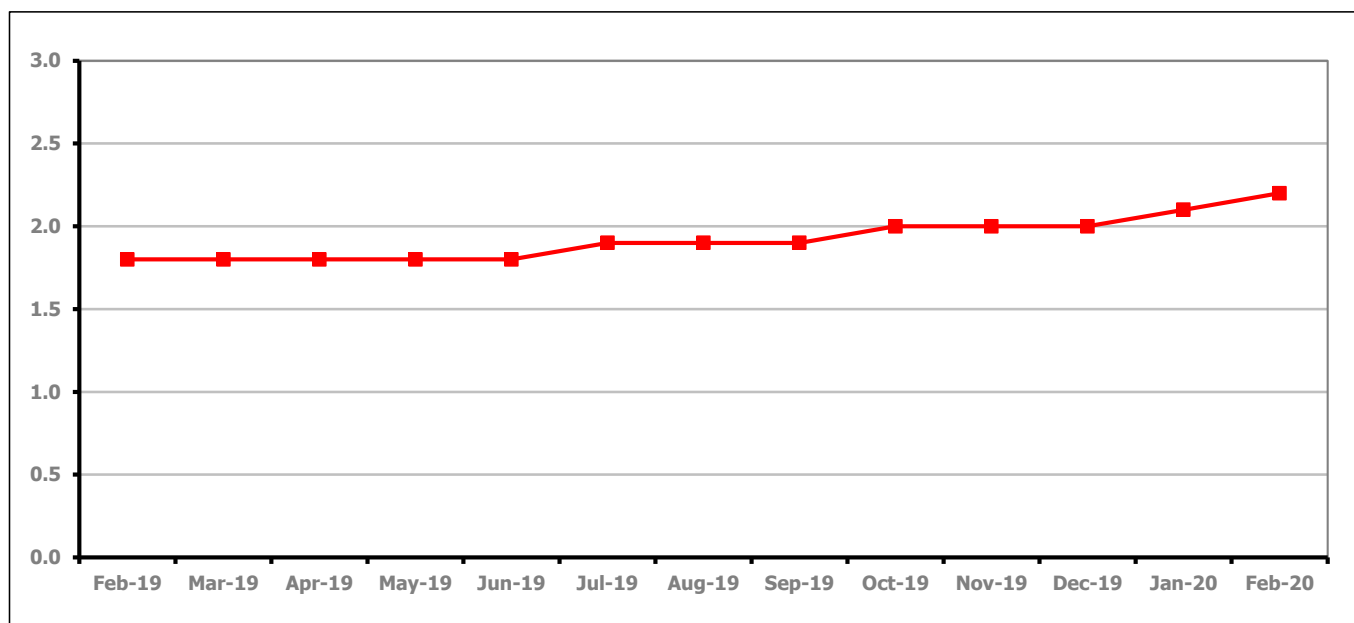


Figure 3 shows the claimant rate in Cheltenham increased to 2.2% in February 2020.

Figure 4: Claimant rates across Cheltenham Borough wards - February 2020

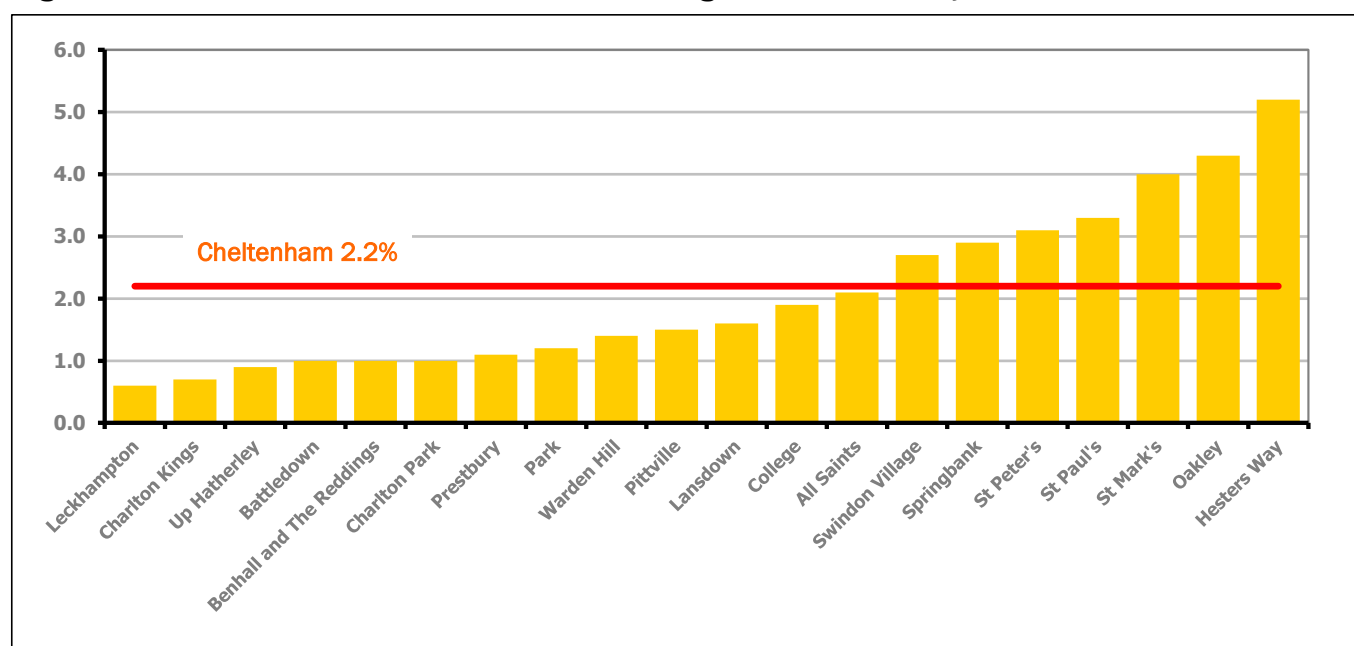


Figure 4 shows the claimant rates for Cheltenham Borough wards. The red line represents the average claimant rate across the Borough of 2.2%. Seven wards lie above the average.

PART 4: LOCAL AUTHORITY DISTRICT AND WARD ANALYSIS

4.1 Cheltenham Borough continued...

Table 5: Analysis of Claimant Count at Cheltenham Borough ward level - February 2020

District	Ward	Rate	Rank*
Cheltenham	Leckhampton	0.6	6
Cheltenham	Charlton Kings	0.7	11
Cheltenham	Up Hatherley	0.9	19
Cheltenham	Battledown	1.0	21
Cheltenham	Benhall and The Reddings	1.0	21
Cheltenham	Charlton Park	1.0	21
Cheltenham	Prestbury	1.1	37
Cheltenham	Park	1.2	44
Cheltenham	Warden Hill	1.4	58
Cheltenham	Pittville	1.5	65
Cheltenham	Lansdown	1.6	75
Cheltenham	College	1.9	96
Cheltenham	All Saints	2.1	102
Cheltenham	Swindon Village	2.7	121
Cheltenham	Springbank	2.9	124
Cheltenham	St Peter's	3.1	127
Cheltenham	St Paul's	3.3	129
Cheltenham	St Mark's	4.0	137
Cheltenham	Oakley	4.3	140
Cheltenham	Hesters Way	5.2	144

	lowest 10% of county
	first quartile of county
	second quartile of county
	third quartile of county
	fourth quartile of county
	highest 10% of county

* 1 = "best" and 146 = "worst"

Table 5 shows overall claimant rates for Cheltenham Borough wards and their position relative to all wards in Gloucestershire.

PART 4: LOCAL AUTHORITY DISTRICT AND WARD ANALYSIS

4.2 Cotswold District

Claimant Rate and Claimant Count

Figure 5: Cotswold District claimant rate over the last year

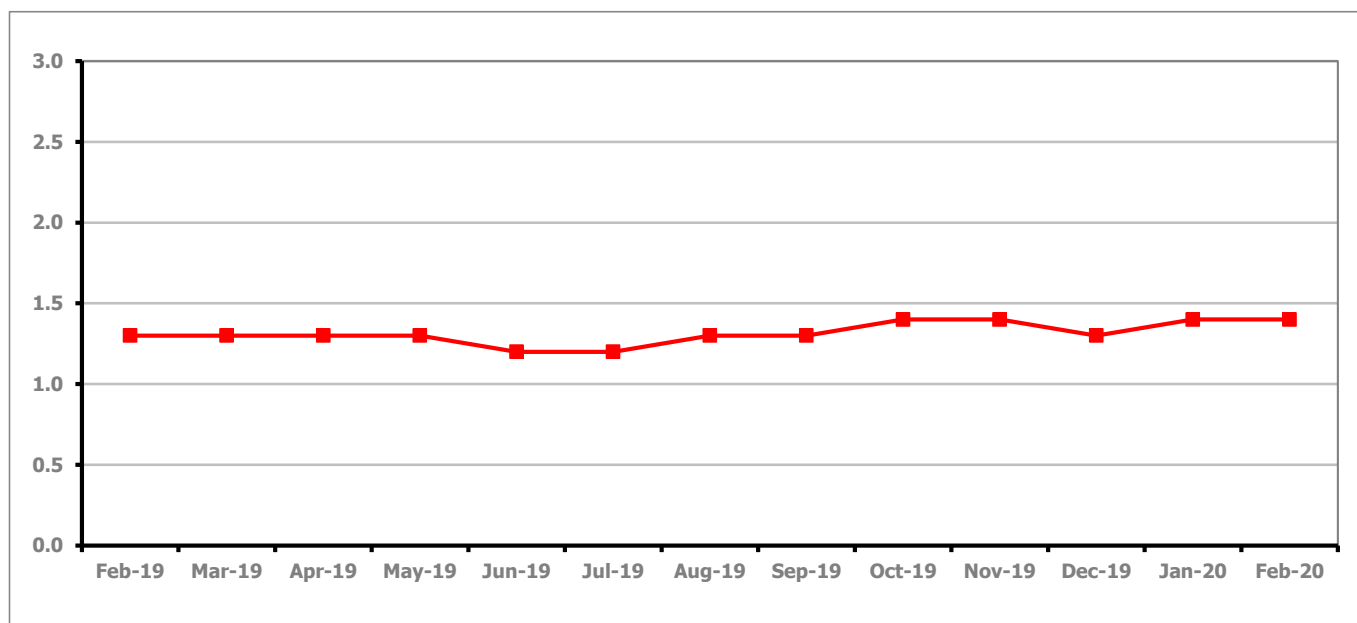


Figure 5 shows the claimant rate in Cotswold District remained at 1.4% in February 2020.

Figure 6: Claimant rates across Cotswold District wards - February 2020

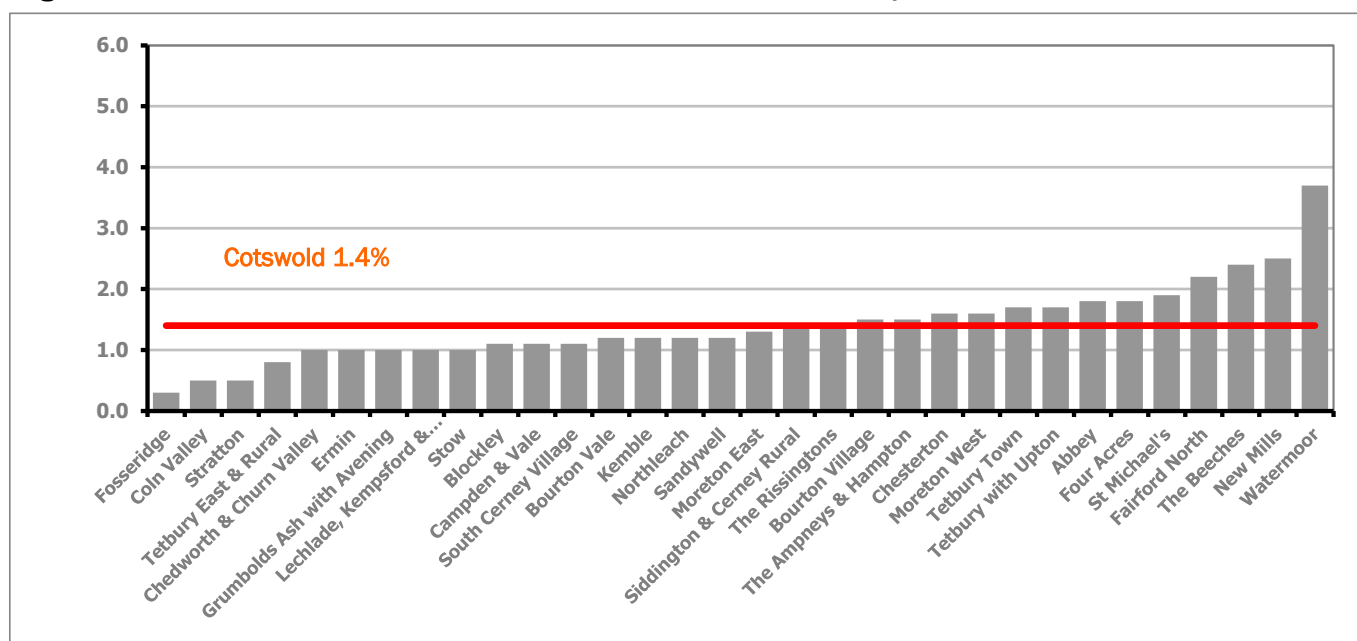


Figure 6 shows the claimant rates for Cotswold District wards. The red line represents the average claimant rate across the District of 1.4%. Thirteen wards lie above the average.

PART 4: LOCAL AUTHORITY DISTRICT AND WARD ANALYSIS

4.2 Cotswold District continued...

Table 6: Analysis of Claimant Count at Cotswold District ward level - February 2020

District	Ward	Rate	Rank*
Cotswolds	Fosseridge	0.3	1
Cotswolds	Coln Valley	0.5	3
Cotswolds	Stratton	0.5	3
Cotswolds	Tetbury East & Rural	0.8	15
Cotswolds	Chedworth & Churn Valley	1.0	21
Cotswolds	Ermin	1.0	21
Cotswolds	Grumbolds Ash with Avening	1.0	21
Cotswolds	Lechlade, Kempsford & Fairford South	1.0	21
Cotswolds	Stow	1.0	21
Cotswolds	Blockley	1.1	37
Cotswolds	Campden & Vale	1.1	37
Cotswolds	South Cerney Village	1.1	37
Cotswolds	Bourton Vale	1.2	44
Cotswolds	Kemble	1.2	44
Cotswolds	Northleach	1.2	44
Cotswolds	Sandywell	1.2	44
Cotswolds	Moreton East	1.3	53
Cotswolds	Siddington & Cerney Rural	1.4	58
Cotswolds	The Rissingtons	1.4	58
Cotswolds	Bourton Village	1.5	65
Cotswolds	The Ampneys & Hampton	1.5	65
Cotswolds	Chesterton	1.6	75
Cotswolds	Moreton West	1.6	75
Cotswolds	Tetbury Town	1.7	82
Cotswolds	Tetbury with Upton	1.7	82
Cotswolds	Abbey	1.8	90
Cotswolds	Four Acres	1.8	90
Cotswolds	St Michael's	1.9	96
Cotswolds	Fairford North	2.2	107
Cotswolds	The Beeches	2.4	115
Cotswolds	New Mills	2.5	119
Cotswolds	Watermoor	3.7	133

	lowest 10% of county
	first quartile of county
	second quartile of county
	third quartile of county
	fourth quartile of county
	highest 10% of county

* 1 = "best" and 146 = "worst"

Table 6 shows overall claimant rates for Cotswold District wards and their position relative to all wards in Gloucestershire.

PART 4: LOCAL AUTHORITY DISTRICT AND WARD ANALYSIS

4.3 Forest of Dean District

Claimant Rate and Claimant Count

Figure 7: Forest of Dean District claimant rate over the last year

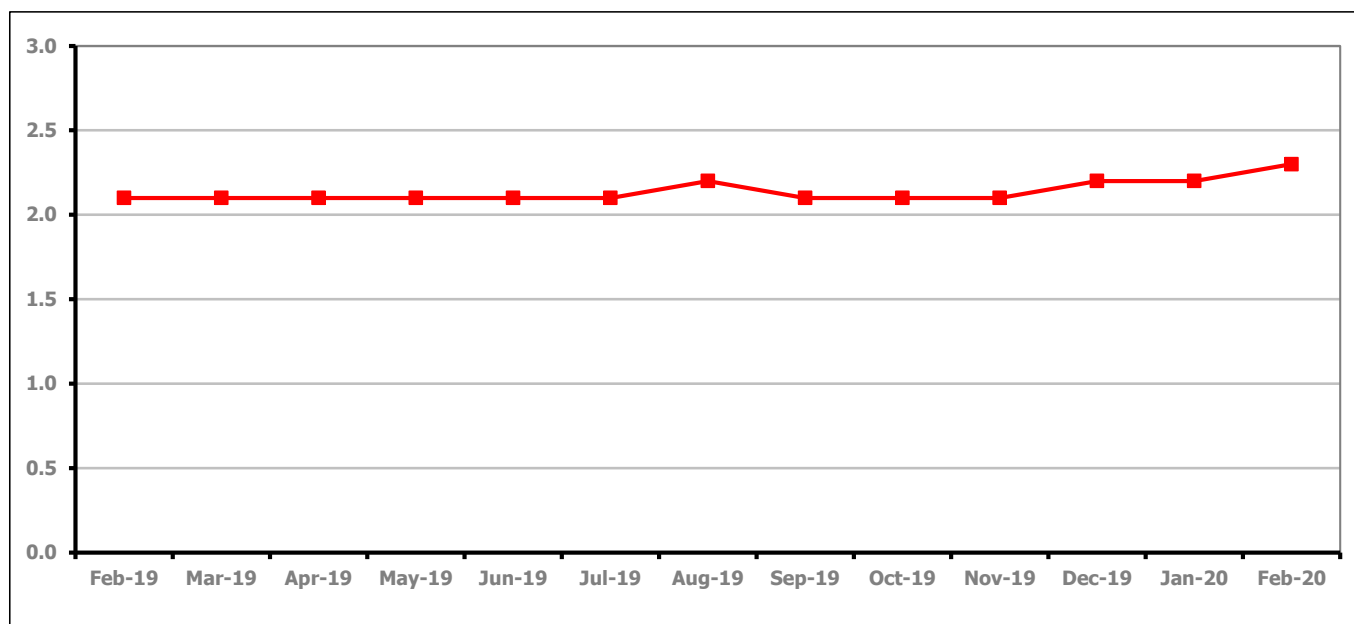


Figure 7 shows the claimant rate in the Forest of Dean increased to 2.3% in February 2020.

Figure 8: Claimant rates across Forest of Dean District wards - February 2020

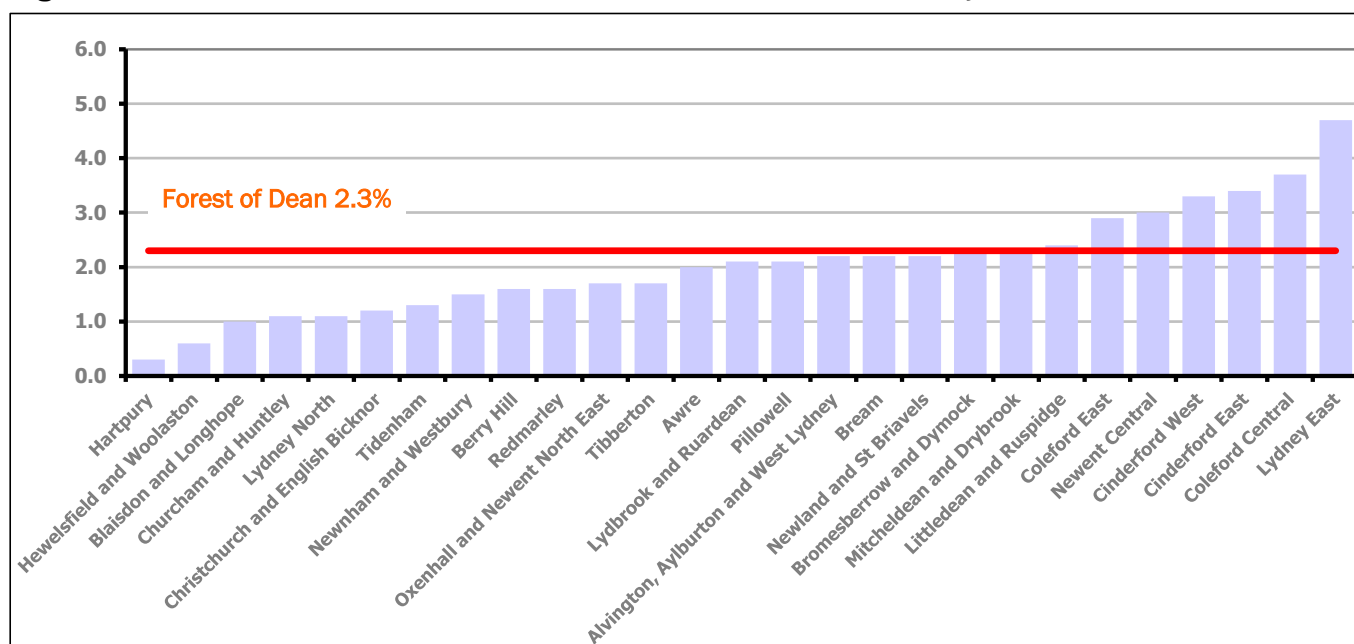


Figure 8 shows the claimant rates for the Forest of Dean District wards. The red line represents the average claimant rate across the District of 2.3%. Seven wards lie above the average.

PART 4: LOCAL AUTHORITY DISTRICT AND WARD ANALYSIS**4.3 Forest of Dean District continued...***Table 7: Analysis of Claimant Count at Forest of Dean District ward level - February 2020*

District	Ward	Rate	Rank*
Forest	Hartpury	0.3	1
Forest	Hewelsfield and Woolaston	0.6	6
Forest	Blaisdon and Longhope	1.0	21
Forest	Churcham and Huntley	1.1	37
Forest	Lydney North	1.1	37
Forest	Christchurch and English Bicknor	1.2	44
Forest	Tidenham	1.3	53
Forest	Newnham and Westbury	1.5	65
Forest	Berry Hill	1.6	75
Forest	Redmarley	1.6	75
Forest	Oxenhall and Newent North East	1.7	82
Forest	Tibberton	1.7	82
Forest	Awre	2.0	99
Forest	Lydbrook and Ruardean	2.1	102
Forest	Pillowell	2.1	102
Forest	Alvington, Aylburton and West Lydney	2.2	107
Forest	Bream	2.2	107
Forest	Newland and St Briavels	2.2	107
Forest	Bromesberrow and Dymock	2.3	112
Forest	Mitcheldean and Drybrook	2.3	112
Forest	Littledean and Ruspidge	2.4	115
Forest	Coleford East	2.9	124
Forest	Newent Central	3.0	126
Forest	Cinderford West	3.3	129
Forest	Cinderford East	3.4	132
Forest	Coleford Central	3.7	133
Forest	Lydney East	4.7	142

	lowest 10% of county
	first quartile of county
	second quartile of county
	third quartile of county
	fourth quartile of county
	highest 10% of county

* 1 = "best" and 146 = "worst"

Table 7 shows overall claimant rates for the Forest of Dean District wards and their position relative to all wards in Gloucestershire.

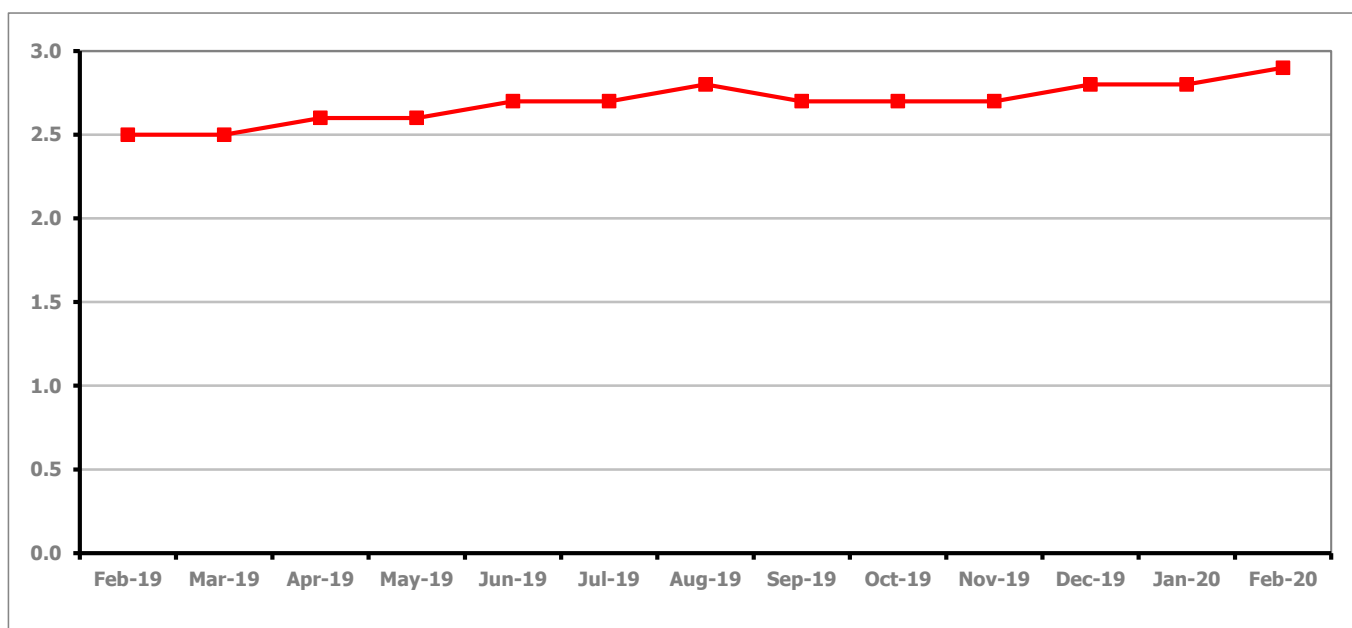
PART 4: LOCAL AUTHORITY DISTRICT AND WARD ANALYSIS**4.4 Gloucester City****Claimant Rate and Claimant Count***Figure 9: Gloucester City claimant rate over the last year*

Figure 9 shows the claimant rate for Gloucester City increased to 2.9% in February 2020.

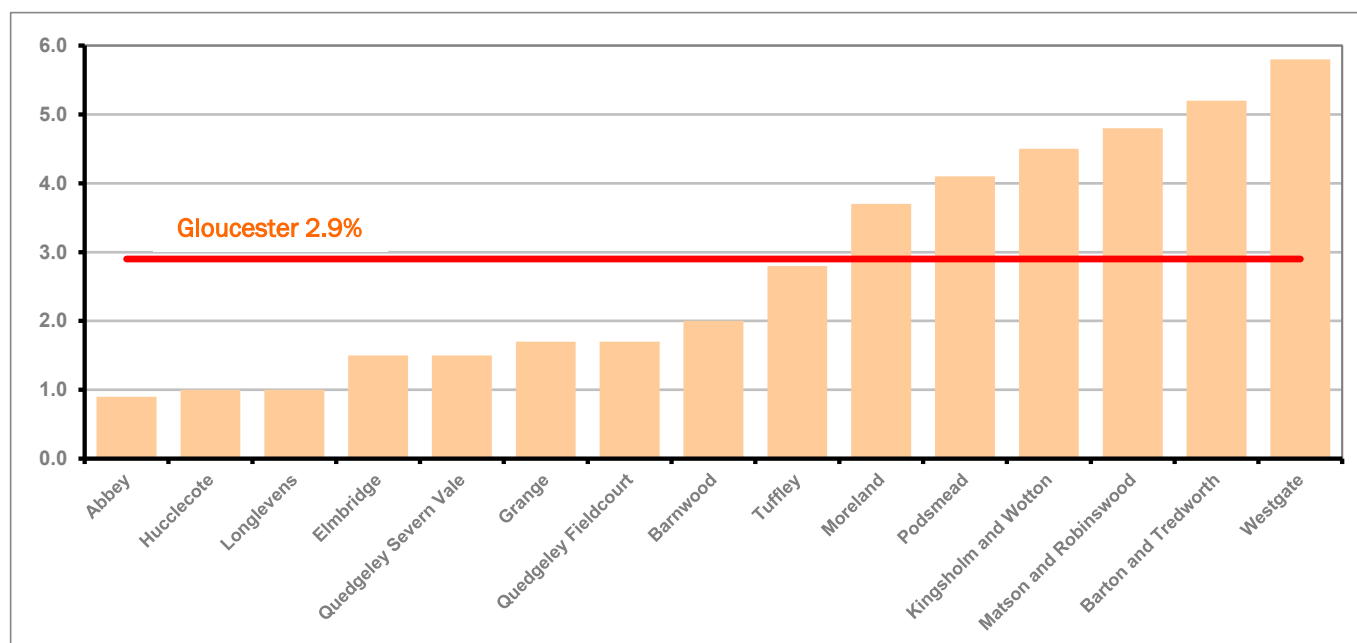
Figure 10: Claimant rates across Gloucester City wards - February 2020

Figure 10 shows the claimant rates for Gloucester City district wards. The red line represents the average claimant rate across the City of 2.9%. Six wards lie above the average.

PART 4: LOCAL AUTHORITY DISTRICT AND WARD ANALYSIS

4.4 Gloucester City continued...

Table 8: Analysis of Claimant Count at Gloucester City ward level - February 2020

District	Ward	Rate	Rank*
Gloucester	Abbey	0.9	19
Gloucester	Hucclecote	1.0	21
Gloucester	Longlevens	1.0	21
Gloucester	Elmbridge	1.5	65
Gloucester	Quedgeley Severn Vale	1.5	65
Gloucester	Grange	1.7	82
Gloucester	Quedgeley Fieldcourt	1.7	82
Gloucester	Barnwood	2.0	99
Gloucester	Tuffley	2.8	123
Gloucester	Moreland	3.7	133
Gloucester	Podsmead	4.1	138
Gloucester	Kingsholm and Wotton	4.5	141
Gloucester	Matson and Robinswood	4.8	143
Gloucester	Barton and Tredworth	5.2	144
Gloucester	Westgate	5.8	146

	lowest 10% of county
	first quartile of county
	second quartile of county
	third quartile of county
	fourth quartile of county
	highest 10% of county

* 1 = "best" and 146 = "worst"

Table 8 shows overall claimant rates for Gloucester City wards and their position relative to all wards in Gloucestershire.

PART 4: LOCAL AUTHORITY DISTRICT AND WARD ANALYSIS

4.5 Stroud District

Claimant Rate and Claimant Count

Figure 11: Stroud District claimant rate over the last year

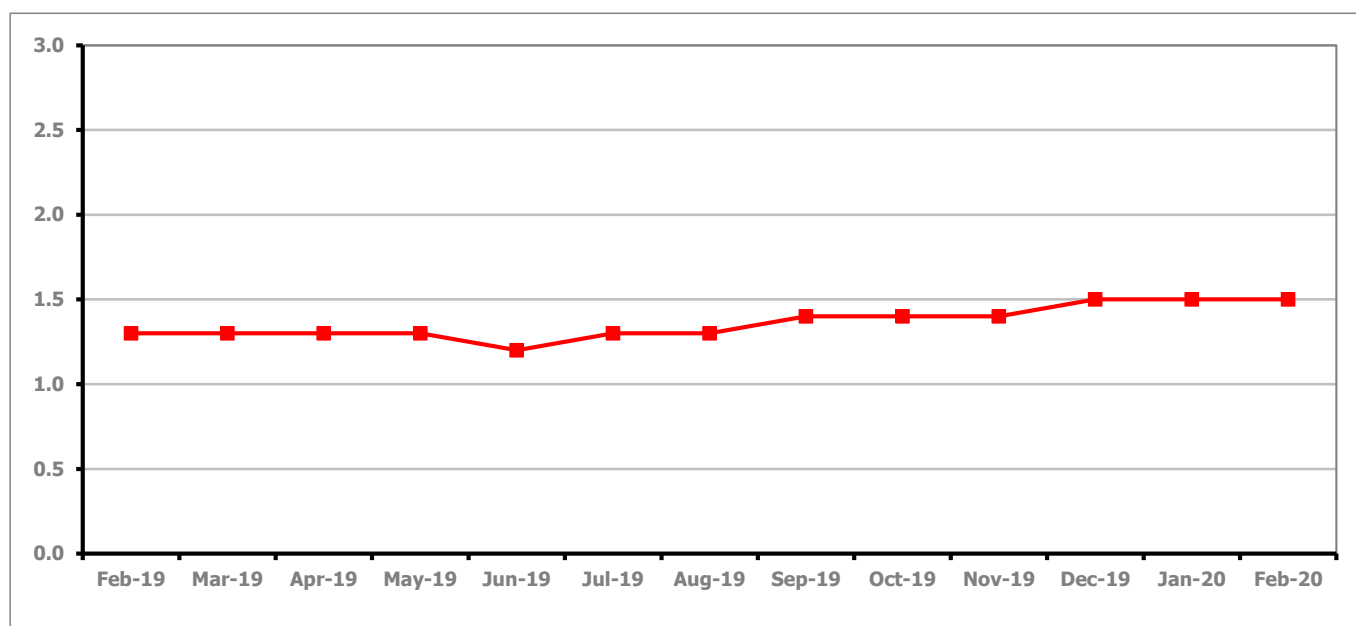


Figure 11 shows the claimant rate for Stroud remained at 1.5% in February 2020.

Figure 12: Claimant rates across Stroud District wards - February 2020

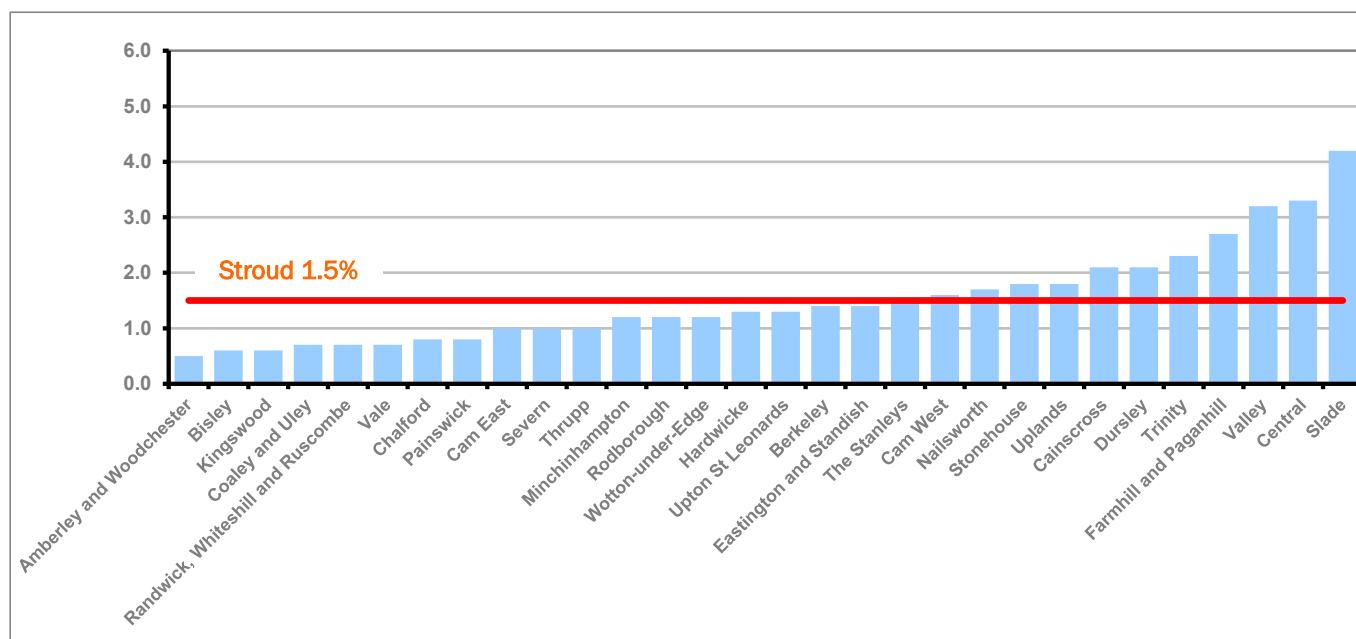


Figure 12 shows the claimant rates in Stroud District wards. The red line represents the average claimant rate across the District of 1.5%. Eleven wards are above the average.

PART 4: LOCAL AUTHORITY AND DISTRICT ANALYSIS

4.5 Stroud District continued...

Table 9: Analysis of Claimant Count at Stroud District ward level - February 2020

District	Ward	Rate	Rank*
Stroud	Amberley and Woodchester	0.5	3
Stroud	Bisley	0.6	6
Stroud	Kingswood	0.6	6
Stroud	Coaley and Uley	0.7	11
Stroud	Randwick, Whiteshill and Ruscombe	0.7	11
Stroud	Vale	0.7	11
Stroud	Chalford	0.8	15
Stroud	Painswick	0.8	15
Stroud	Cam East	1.0	21
Stroud	Severn	1.0	21
Stroud	Thrupp	1.0	21
Stroud	Minchinhampton	1.2	44
Stroud	Rodborough	1.2	44
Stroud	Wotton-under-Edge	1.2	44
Stroud	Hardwicke	1.3	53
Stroud	Upton St Leonards	1.3	53
Stroud	Berkeley	1.4	58
Stroud	Eastington and Standish	1.4	58
Stroud	The Stanleys	1.5	65
Stroud	Cam West	1.6	75
Stroud	Nailsworth	1.7	82
Stroud	Stonehouse	1.8	90
Stroud	Uplands	1.8	90
Stroud	Cainscross	2.1	102
Stroud	Dursley	2.1	102
Stroud	Trinity	2.3	112
Stroud	Farmhill and Paganhill	2.7	121
Stroud	Valley	3.2	128
Stroud	Central	3.3	129
Stroud	Slade	4.2	139

	lowest 10% of county
	first quartile of county
	second quartile of county
	third quartile of county
	fourth quartile of county
	highest 10% of county

* 1 = "best" and 146 = "worst"

Table 9 shows overall claimant rates for Stroud District wards and their position relative to all wards in Gloucestershire.

PART 4: LOCAL AUTHORITY DISTRICT AND WARD ANALYSIS

4.6 Tewkesbury Borough

Claimant Rate and Claimant Count

Figure 13: Tewkesbury Borough claimant rate over the last year

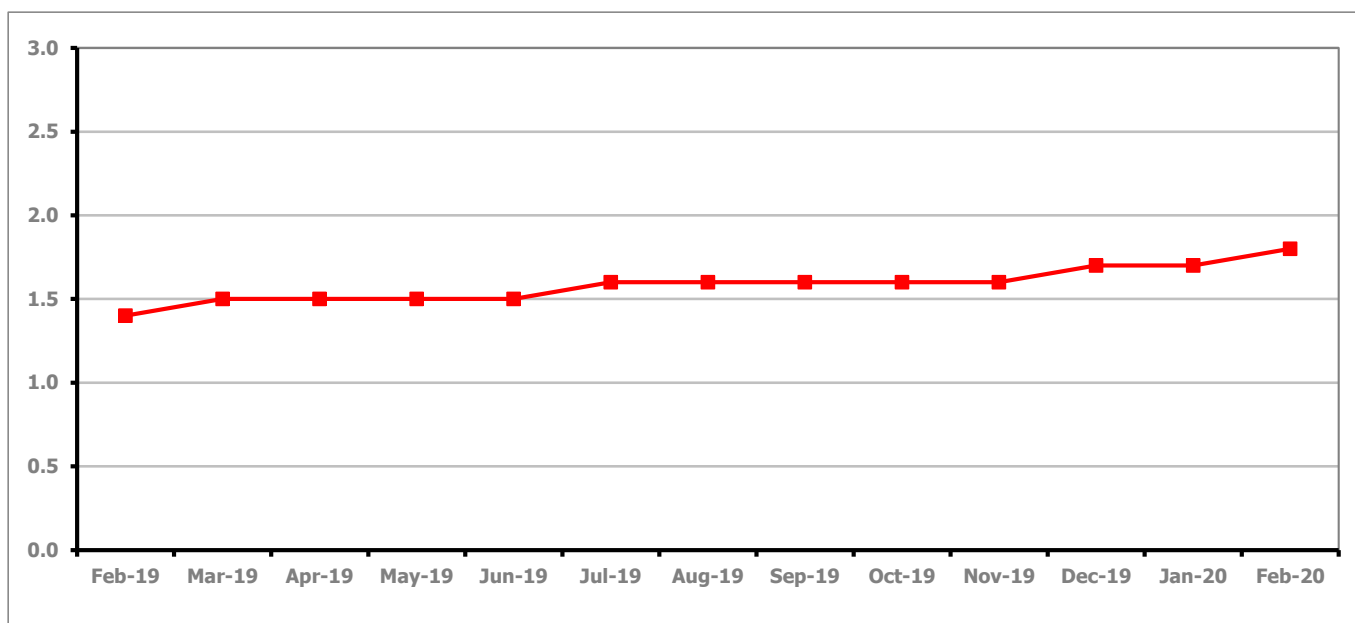


Figure 13 shows the claimant rate for Tewkesbury Borough increased to 1.8% in February 2020.

Figure 14: Claimant rates across Tewkesbury Borough wards - February 2020

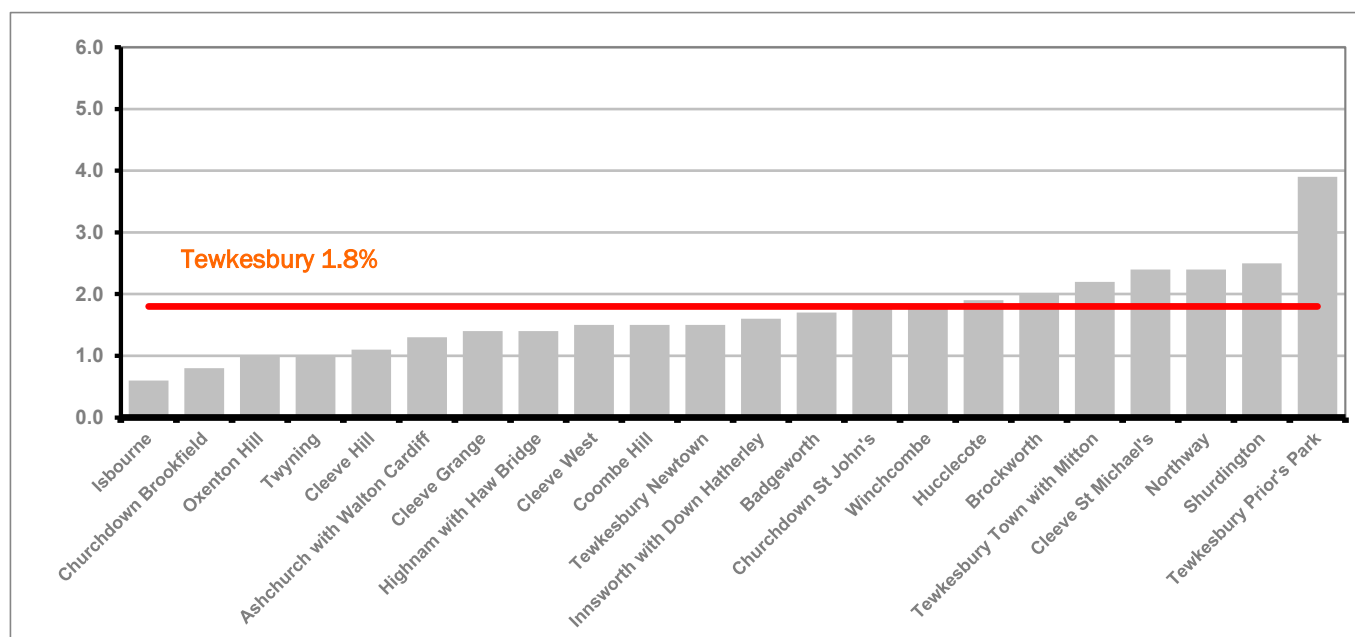


Figure 14 shows the claimant rates in Tewkesbury Borough wards. The red line represents the average claimant rate across the District of 1.8%. Seven wards are above the average.

PART 4: LOCAL AUTHORITY AND DISTRICT ANALYSIS

4.6 Tewkesbury Borough continued...

Table 10: Analysis of Claimant Count at Tewkesbury Borough level - February 2020

District	Ward	Rate	Rank*
Tewkesbury	Isbourne	0.6	6
Tewkesbury	Churchdown Brookfield	0.8	15
Tewkesbury	Oxenton Hill	1.0	21
Tewkesbury	Twynning	1.0	21
Tewkesbury	Cleeve Hill	1.1	37
Tewkesbury	Ashchurch with Walton Cardiff	1.3	53
Tewkesbury	Cleeve Grange	1.4	58
Tewkesbury	Highnam with Haw Bridge	1.4	58
Tewkesbury	Cleeve West	1.5	65
Tewkesbury	Coombe Hill	1.5	65
Tewkesbury	Tewkesbury Newtown	1.5	65
Tewkesbury	Innsworth with Down Hatherley	1.6	75
Tewkesbury	Badgeworth	1.7	82
Tewkesbury	Churchdown St John's	1.8	90
Tewkesbury	Winchcombe	1.8	90
Tewkesbury	Hucclecote	1.9	96
Tewkesbury	Brockworth	2.0	99
Tewkesbury	Tewkesbury Town with Mitton	2.2	107
Tewkesbury	Cleeve St Michael's	2.4	115
Tewkesbury	Northway	2.4	115
Tewkesbury	Shurdington	2.5	119
Tewkesbury	Tewkesbury Prior's Park	3.9	136

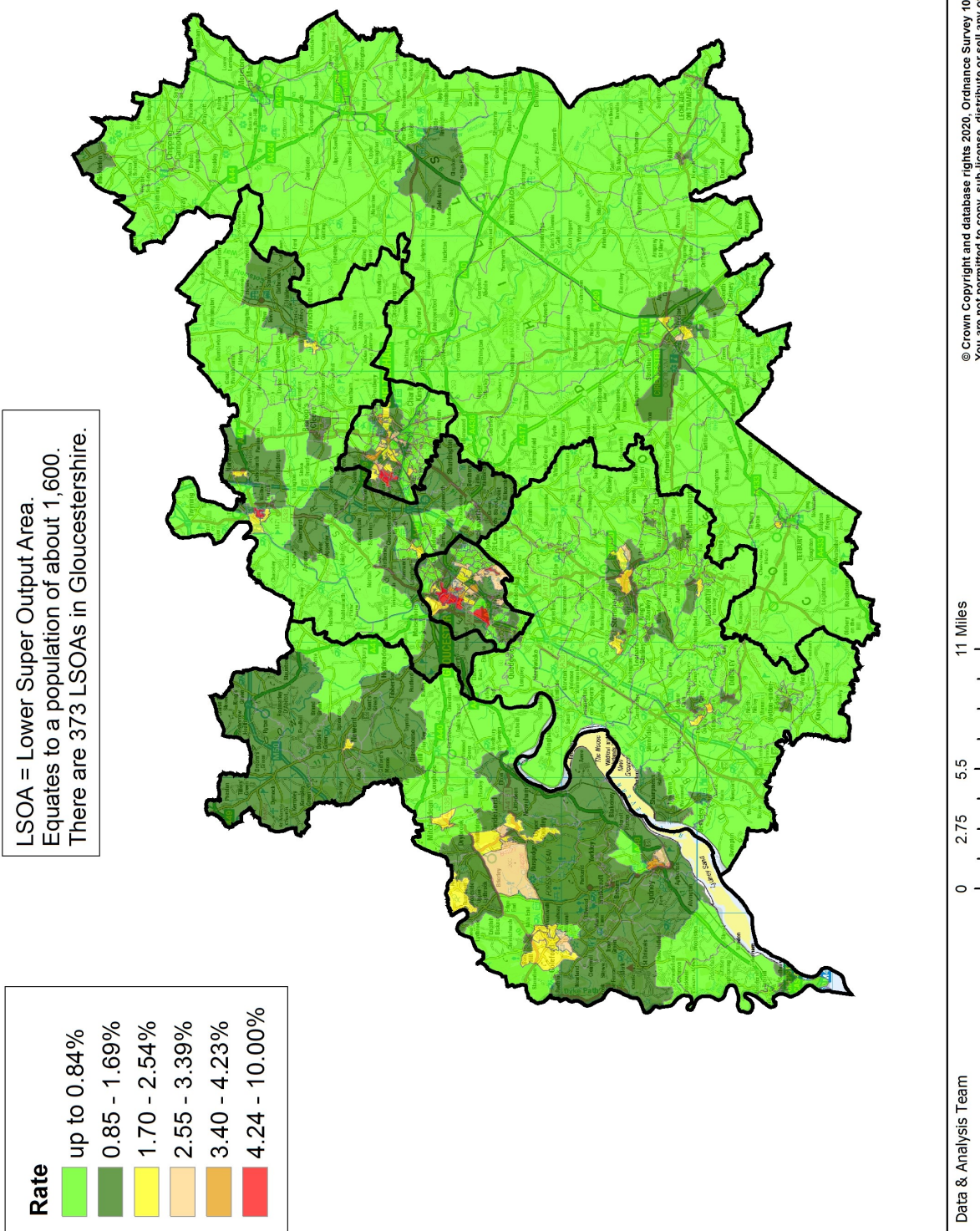
	lowest 10% of county
	first quartile of county
	second quartile of county
	third quartile of county
	fourth quartile of county
	highest 10% of county

* 1 = "best" and 146 = "worst"

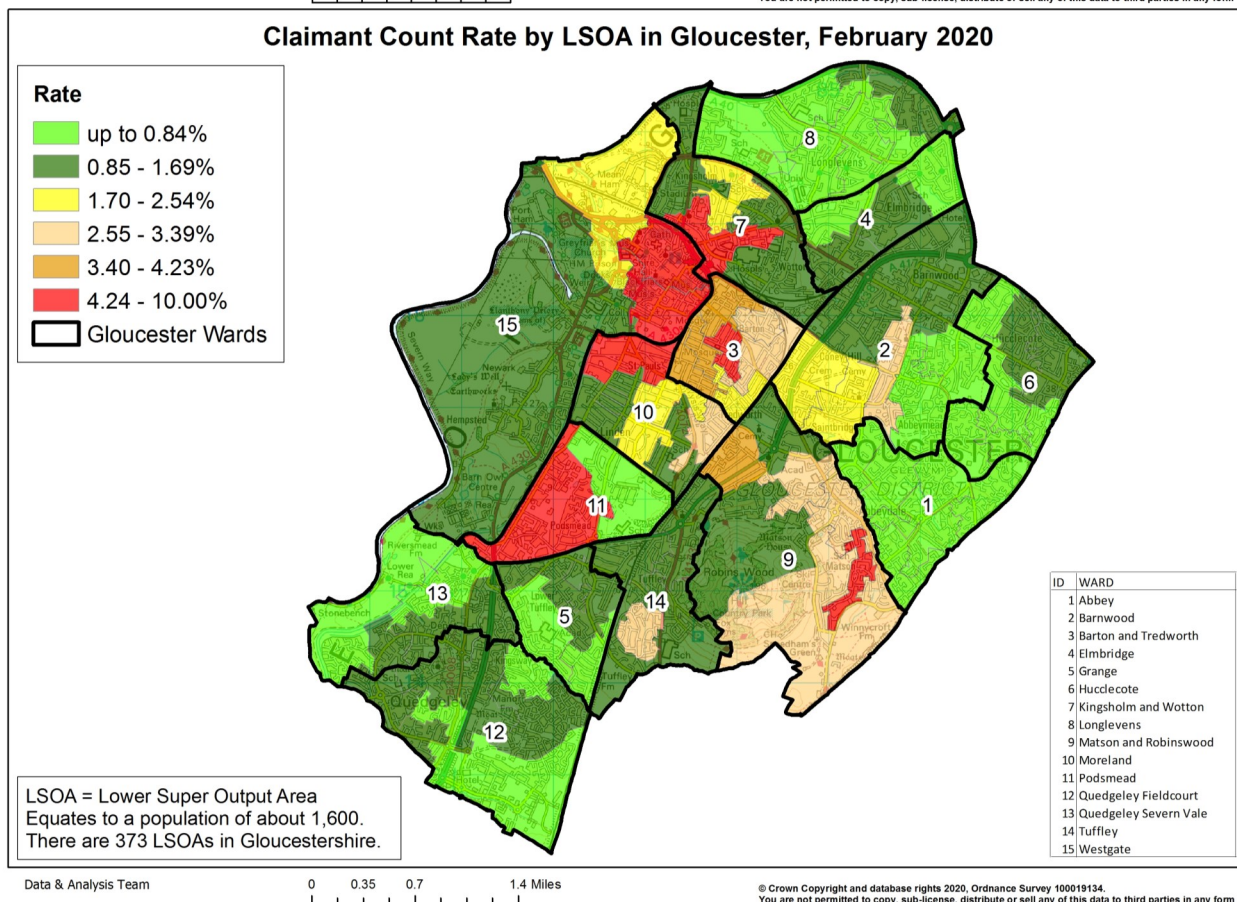
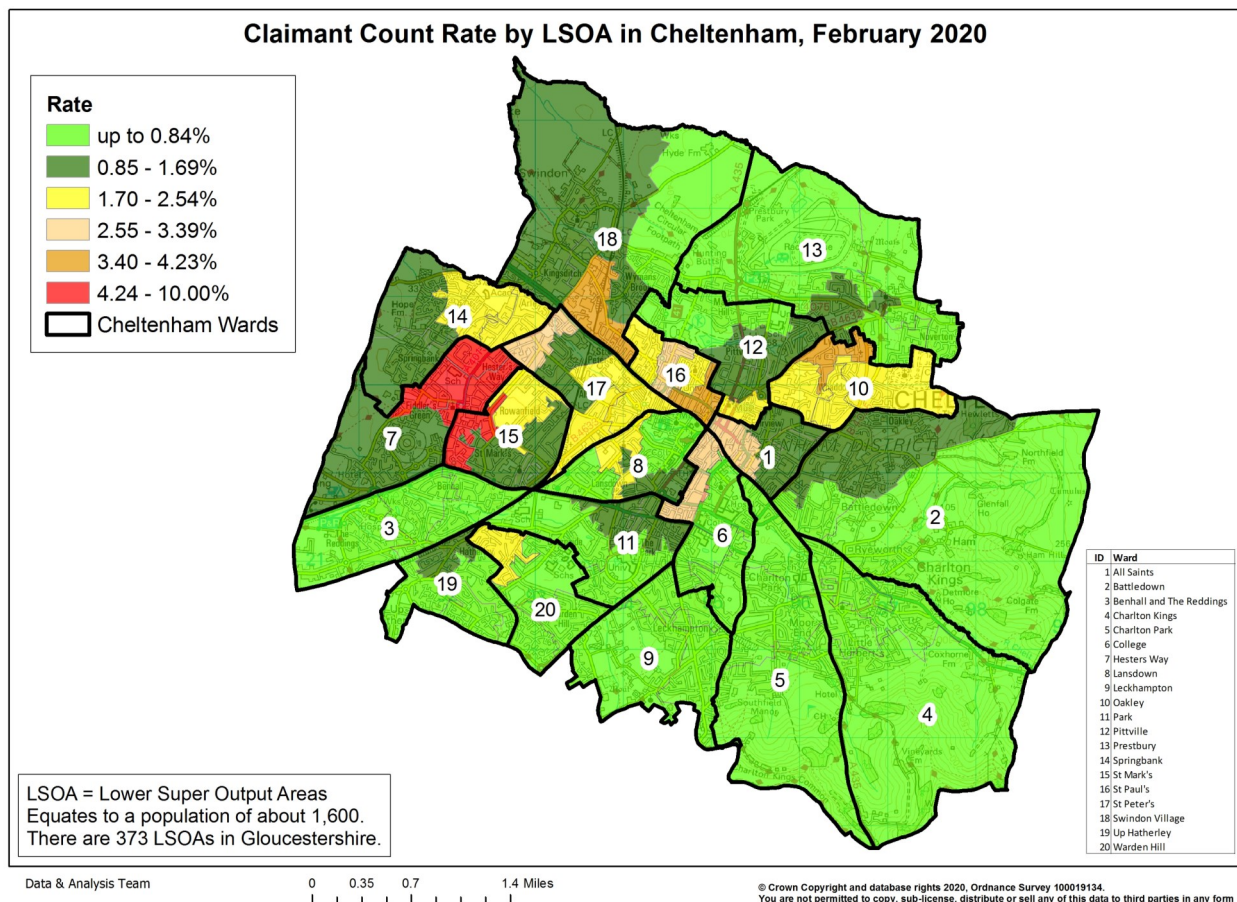
Table 10 shows overall claimant rates for Tewkesbury Borough wards and their position relative to all wards in Gloucestershire.

PART 5: MAP SHOWING DISTRIBUTION OF CLAIMANT RATE ACROSS GLOUCESTERSHIRE

Claimant Count Rate by LSOA in Gloucestershire, February 2020



PART 5: MAP SHOWING DISTRIBUTION OF CLAIMANT RATE ACROSS GLOUCESTERSHIRE



PART 6: YOUTH UNEMPLOYMENT(18-24 year olds)

Youth Claimant Rate and Claimant Count

Figure 15: Claimant Count for Gloucestershire over the past year

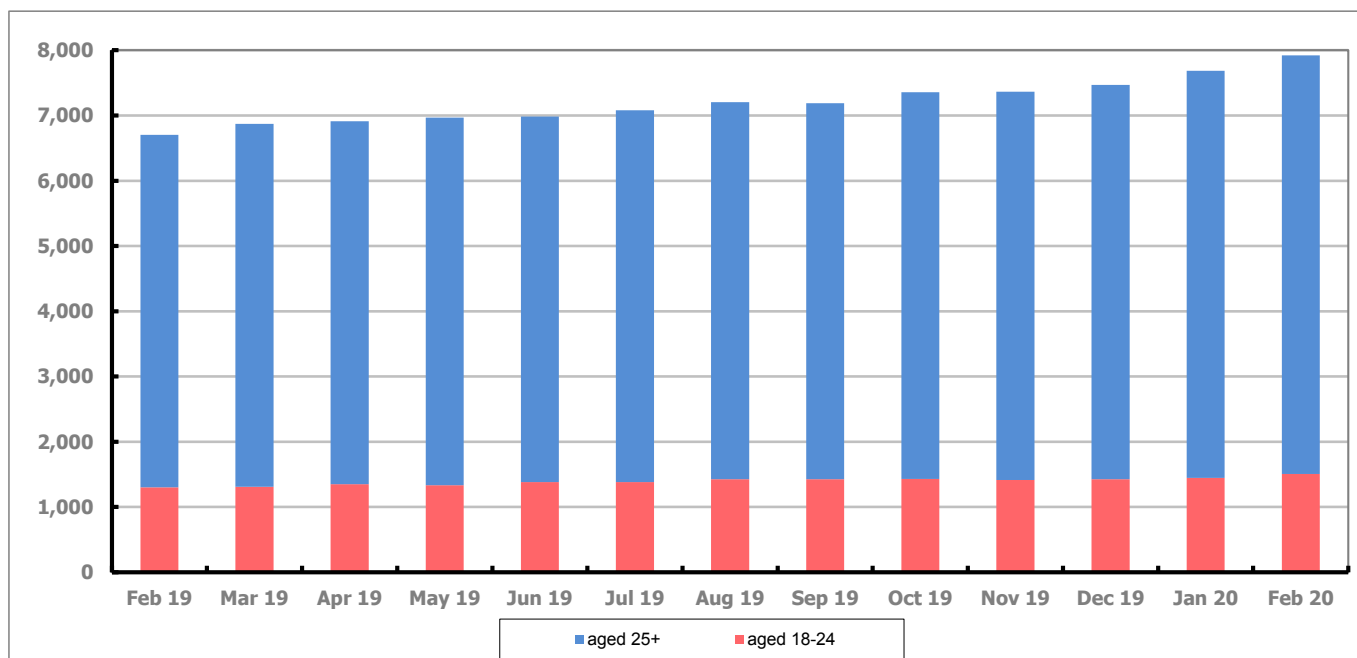


Figure 15 shows that in February 2020, 1,505 people aged 18-24 were claiming Job Seekers Allowance and Universal Credit who were not in work in Gloucestershire, this represents 18.9% of total working age claimants.

PART 7: YOUNG PEOPLE NOT IN EDUCATION, EMPLOYMENT OR TRAINING (NEET) IN GLOUCESTERSHIRE

Data provided by Gloucestershire Youth Support Team on the situation of young people (16-18) in Gloucestershire who are not in education, employment or formal training.

Gloucestershire Youth Support Team is required to report performance with the 16-18 age range against nationally defined criteria for counting the NEET group. The NEET group includes young people actively seeking education, employment or training as well as those young people who are either not yet ready or who are unable to access these opportunities because of their personal circumstances. The figures quoted below include young people in both of these categories.

Summary

At the end of February 2020 there were 368 young people aged 16-18 not in education, employment or training in Gloucestershire and this figure translates into an adjusted (*) 16-18 NEET population of 2.45%. The total number of NEET young people decreased by 24 in February 2020 compared to January 2020, all districts saw a decrease in their figures.

Total NEET Group by District Area

February 2020 NEET data

	Cheltenham	Cotswold	Forest	Gloucester	Stroud	Tewkesbury	Total
Total NEET	72	30	51	113	52	50	368
Cohort	2747	2164	2072	3693	3218	2280	16174
% NEET	2.62	1.39	2.46	3.06	1.62	2.19	2.45*

If you would like to receive any further information on Gloucestershire's NEET strategy then please contact Lynne.Speak@Prospects.co.uk or telephone 07900 391182.

(*) Adjustment includes a proportion of young people aged 16-18 whose outcomes are not known to Gloucestershire Youth Support Team.