

# Unemployment Bulletin

Issue 83 June 2015

## Contents

### Part 1: Summary

A summary of unemployment data at district, County, regional and national level 1

### Part 2: County

Unemployment figures for the County compared to the South West and the rest of the UK 3

### Part 3: Districts

A comparative break down of unemployment figures by district 4

### Part 4: Wards

Further breakdown of unemployment figures by ward:

Cheltenham	6
Cotswolds	8
Forest of Dean	10
Gloucester	12
Stroud	14
Tewkesbury	16

### Part 5: Map

Distribution of claimant rate across Gloucestershire 18

### Part 6: Youth Unemployment

Unemployment data for the 18-24 year old age group 20

### Part 7: Young People

Data about Young People Not in Education, Employment or Training (NEET) 22

Please note Universal Credit which will replace the means tested element of Jobseekers Allowance (JSA) is being rolled out across the country, it has recently been introduced in all districts in Gloucestershire.

Data about Universal Credit claimants is currently very limited, so is not included in the unemployment bulletin

## INTRODUCTION

The Unemployment Bulletin provides a monthly update on unemployment data for Gloucestershire, the South West region and the United Kingdom. It is produced by the Strategic Needs Analysis Team in the County Council's Strategy and Challenge function. The data is sourced from the Office for National Statistics via Nomis ([www.nomis.co.uk](http://www.nomis.co.uk)).

The bulletin relates to the number of people Job Seeker's allowance. The rate is the number of Job Seeker's Allowance claimants as a proportion of the working age population.

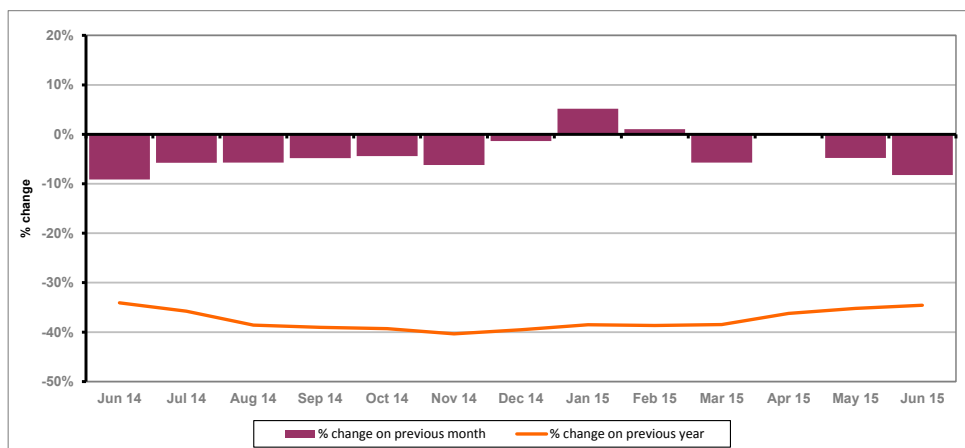
## PART 1: SUMMARY

**The claimant rate in Gloucestershire was 1.1% in June 2015.** This was a 0.1% decrease on the May 2015 figure. The UK rate also decreased to 1.8% whilst the South West rate remained the same as the previous month at 1.1%. Gloucestershire's rate was the same as the South West average of 1.1%, and 0.7% lower than the UK average of 1.8%.

**The claimant count in Gloucestershire in June 2015 decreased by 363 people.** The amount of people claiming in June 2015 was 8.3% lower than the number in May 2015. This compares to a 5.2% decrease in the South West and a 3.7% decrease for the UK.

**The year on year claimant count in Gloucestershire has increased since last month.** The count was 34.6% lower in June 2015 than at the same point in the previous year as shown in the graph below.

Gloucestershire claimants - Month on Month and Year on Year change: June 2014 to June 2015



Source: ONS Crown Copyright Reserved

Produced by:

**Strategic Needs Analysis Team**  
Strategy and Challenge  
Gloucestershire County Council  
July 2015

## DISTRICTS AT A GLANCE

At a glance unemployment information grouped by district. Includes:

**Claim count:** Total number of people claiming Job Seekers Allowance in June 2015

**Compared to last month:** How much larger/smaller June's claimant count is compared to May, expressed as a %

**Claimant rate:** The % of working population claiming Job Seekers Allowance in June 2015

**Highest claiming ward:** The ward with the highest claim count in that district and the rate

### CHELTENHAM BOROUGH

Claim count:	849
Compared to last month:	-9.0%
Claimant rate:	1.1%
Highest claiming ward	St Mark's (2.2%)

### GLOUCESTER CITY

Claim count:	1,375
Compared to last month:	-6.7%
Claimant rate:	1.7%
Highest claiming ward	Westgate (4.3%)

### COTSWOLD DISTRICT

Claim count:	308
Compared to last month:	-11.0%
Claimant rate:	0.6%
Highest claiming ward	Cirencester Watermoor (1.6%)

### STROUD DISTRICT

Claim count:	472
Compared to last month:	-12.3%
Claimant rate:	0.7%
Highest claiming ward	Slade (1.7%)

### FOREST OF DEAN

Claim count:	536
Compared to last month:	-7.9%
Claimant rate:	1.1%
Highest claiming ward	Cinderford West (2.5%)

### TEWKESBURY BOROUGH

Claim count:	497
Compared to last month:	-5.9%
Claimant rate:	1.0%
Highest claiming ward	Tewkesbury Prior's Park (2.8%)

## YOUNG PEOPLE NOT IN EDUCATION, EMPLOYMENT OR TRAINING (NEET)

At the end of June 2015 there were 448 young people aged 16-18 not in education, employment or training in Gloucestershire and this figure translates into an adjusted (\*) 16-18 NEET population of 3.61%.

## PART 2: UK, SW AND GLOUCESTERSHIRE INDICATORS

The unemployment situation in Gloucestershire compared to the South West and the UK.

### Claimant Rate

Figure 1: Claimant Rate for Gloucestershire, the South West and UK over the past year

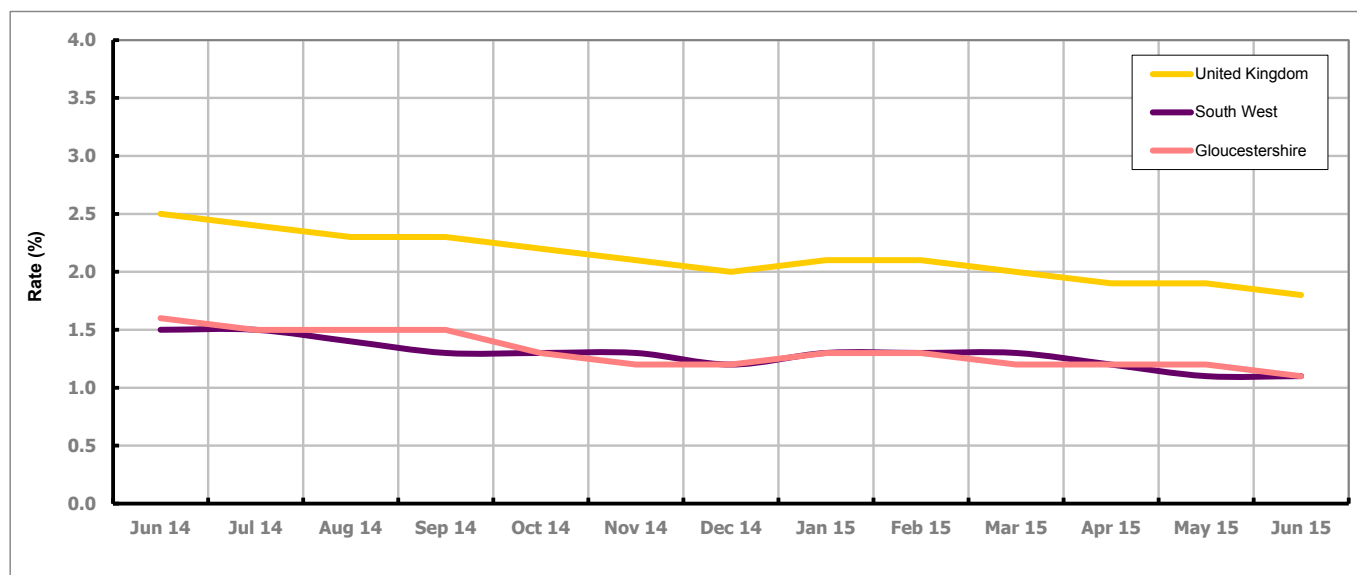


Figure 1 shows the claimant rate for Gloucestershire at 1.1% in June 2015. Between June and September 2014 the Gloucestershire rate was generally higher than the South West. It has been the same as the South West average since December 2014, with the exception of November and March when it was lower and May when it was higher. It has been persistently lower by approximately 0.7% against the UK average. The rate has remained the same since March 2015.

### Claimant Count

Table 1: Analysis of UK, South West and Gloucestershire Claimant Counts

Area	Claimant Count in June 2015	% change on May 2015	Average % change over the last six months	Consecutive months decreasing
UK	733,971	-3.7%	-2.5%	3
South West	35,292	-5.2%	-3.4%	3
Gloucestershire	4,037	-8.3%	-3.0%	3

Table 1 shows that in June 2015, the number of claimants in Gloucestershire was 8.3% lower than the number in May 2015.

The average change in claimants in Gloucestershire for the six months to June 2015 was -3.0%.

## PART 3: LOCAL AUTHORITY DISTRICT ANALYSIS

### Claimant Rate and Claimant Count

Figure 2: Claimant Rate (%) across Gloucestershire - June 2015

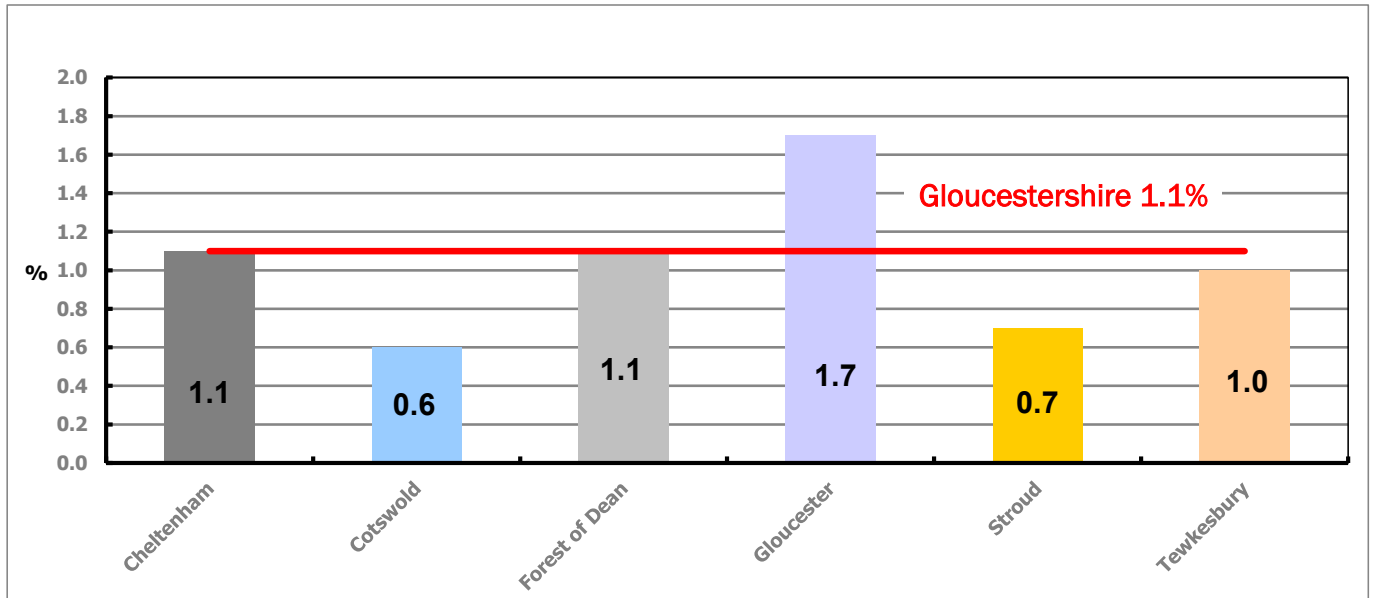


Figure 2 shows the claimant rate for June 2015 in Gloucestershire. Between May 2015 and June 2015, the rate in Cheltenham, Cotswold, Gloucester and Stroud declined, while the rate in the remaining two districts stayed the same.

Figure 3: Total claimants over the past year across Gloucestershire Districts

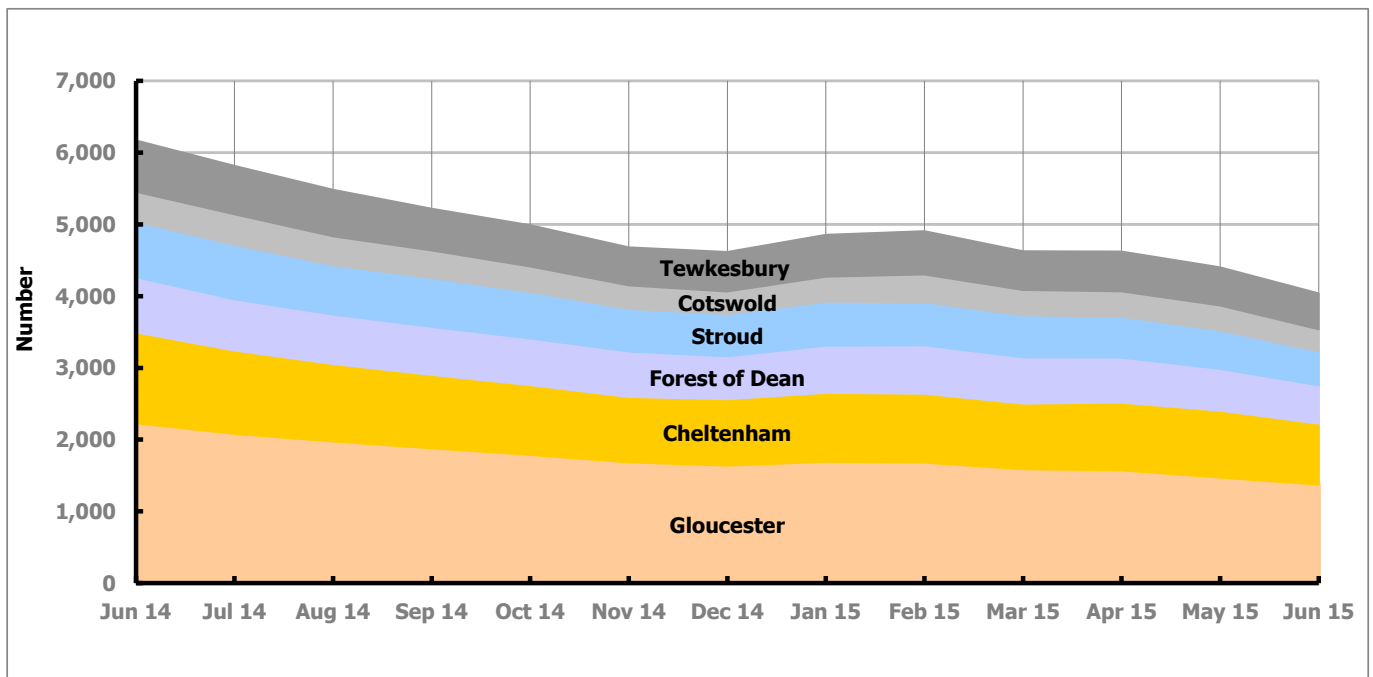


Figure 3 shows the overall claimant count by district over the past year. The number of claimants has decreased over the last year, with the exception of January, February and April 2015 when there was an increase.

Table 2: Analysis of Gloucestershire and District Claimant Counts

Total	June 15 Number	June 15 Rate	May 15 Number	May 15 Rate	Monthly change	% monthly change	Monthly change of rate
<b>Gloucestershire</b>	4,037	1.1	4,400	1.2	-363	-8.3%	-0.1
Cheltenham	849	1.1	933	1.2	-84	-9.0%	-0.1
Cotswold	308	0.6	346	0.7	-38	-11.0%	-0.1
Forest of Dean	536	1.1	582	1.1	-46	-7.9%	0.0
Gloucester	1,375	1.7	1,473	1.8	-98	-6.7%	-0.1
Stroud	472	0.7	538	0.8	-66	-12.3%	-0.1
Tewkesbury	497	1.0	528	1.0	-31	-5.9%	0.0

Table 2 shows the change in the claimant count in June 2015 compared to May 2015. All districts saw a decline in the number of claimants.

Table 3: Analysis of Male Gloucestershire and District Claimant Counts

Male	June 15 Number	June 15 Rate	May 15 Number	May 15 Rate	Monthly change	% monthly change	Monthly change of rate
<b>Gloucestershire</b>	2,626	1.4	2,916	1.6	-290	-9.9%	-0.2
Cheltenham	552	1.5	624	1.6	-72	-11.5%	-0.1
Cotswold	199	0.8	232	0.9	-33	-14.2%	-0.1
Forest of Dean	343	1.4	375	1.5	-32	-8.5%	-0.1
Gloucester	913	2.3	985	2.5	-72	-7.3%	-0.2
Stroud	307	0.9	352	1.0	-45	-12.8%	-0.1
Tewkesbury	312	1.2	348	1.4	-36	-10.3%	-0.2

Table 3 shows the change in the male claimant count in June 2015 compared to May 2015. All districts saw a decline in the number of male claimants.

Table 4: Analysis of Female Gloucestershire and District Claimant Counts

Female	June 15 Number	June 15 Rate	May 15 Number	May 15 Rate	Monthly change	% monthly change	Monthly change of rate
<b>Gloucestershire</b>	1,411	0.7	1,484	0.8	-73	-4.9%	-0.1
Cheltenham	297	0.8	309	0.8	-12	-3.9%	0.0
Cotswold	109	0.4	114	0.4	-5	-4.4%	0.0
Forest of Dean	193	0.8	207	0.8	-14	-6.8%	0.0
Gloucester	462	1.2	488	1.2	-26	-5.3%	0.0
Stroud	165	0.5	186	0.5	-21	-11.3%	0.0
Tewkesbury	185	0.7	180	0.7	5	2.8%	0.0

Table 4 shows the change in the female claimant count in June 2015 compared to May 2015. Tewkesbury saw a small increase in the number of female claimants, while the other districts saw a decrease.

## PART 4: LOCAL AUTHORITY DISTRICT AND WARD ANALYSIS

This section covers the six districts and a comparison of their constituent wards.

### 4.1 Cheltenham Borough

#### Claimant Rate and Claimant Count

Figure 4: Cheltenham Borough claimant rate over the last year

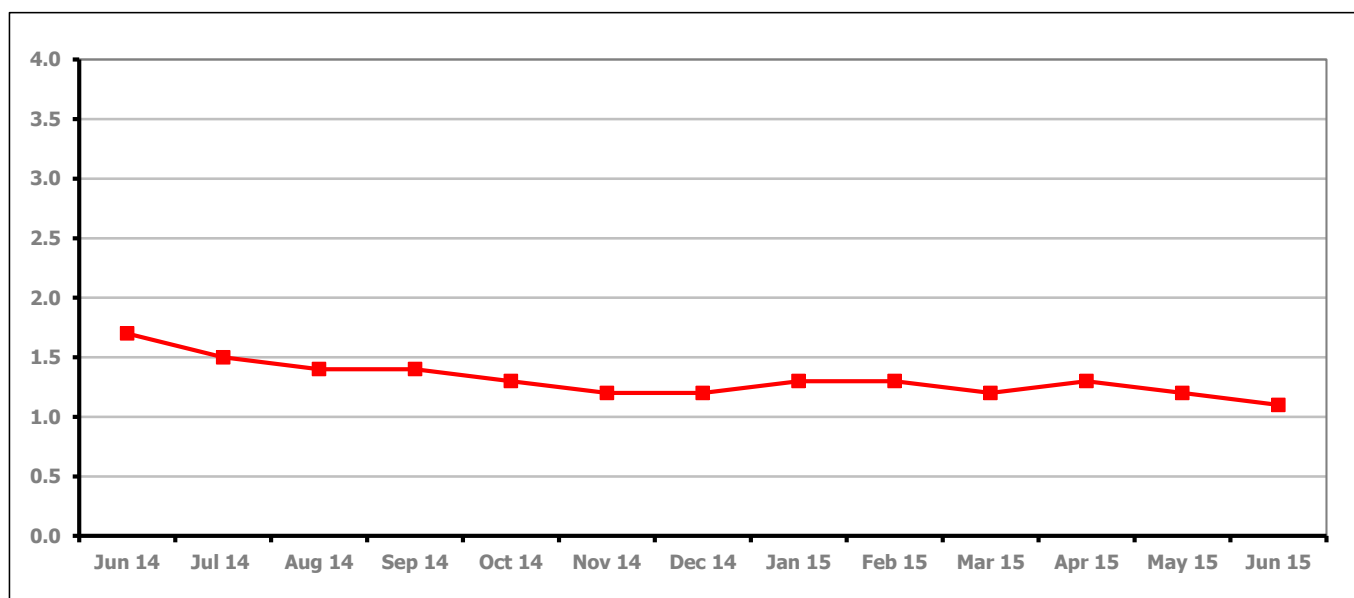


Figure 4 shows the claimant rate in Cheltenham decreased in June 2015 to 1.1%.

Figure 5: Cheltenham Borough claimants - Month on Month and Year on Year change

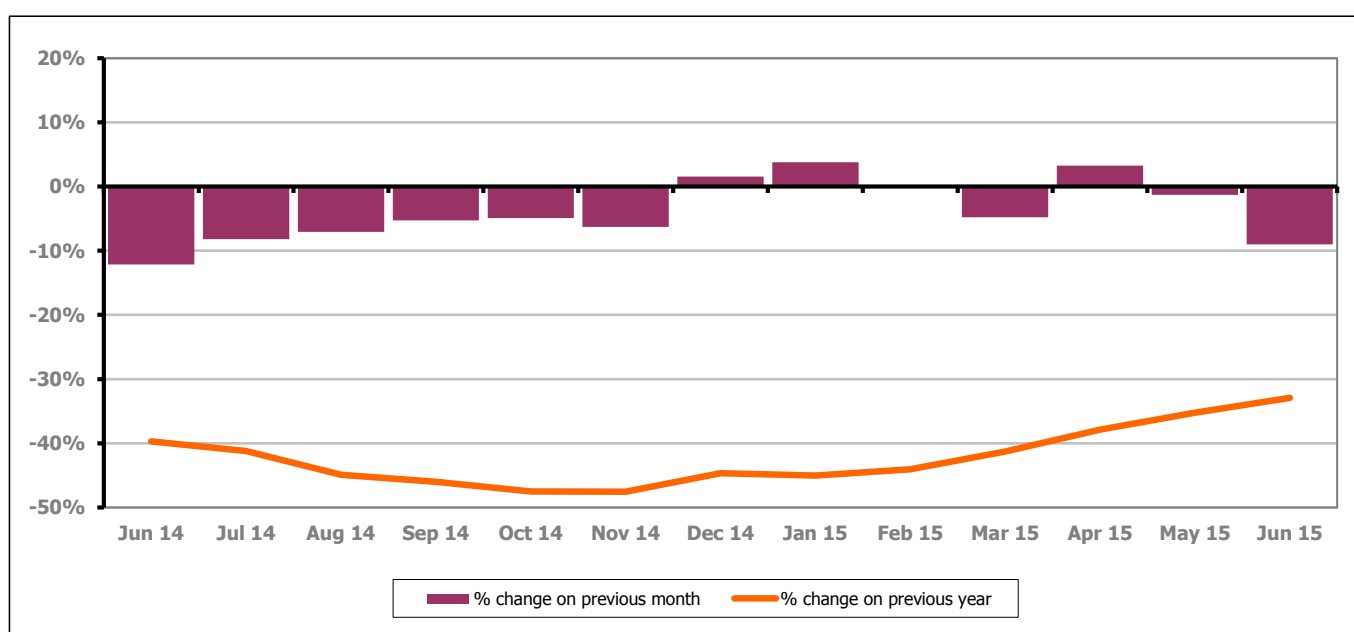


Figure 5 shows the claimant count decreased by 9.0% since last month. The change on the previous year has increased between May and June 2015 to -32.9%.

## PART 4: LOCAL AUTHORITY DISTRICT AND WARD ANALYSIS

### 4.1 Cheltenham Borough continued...

Figure 6: Claimant rates across Cheltenham Borough wards - June 2015

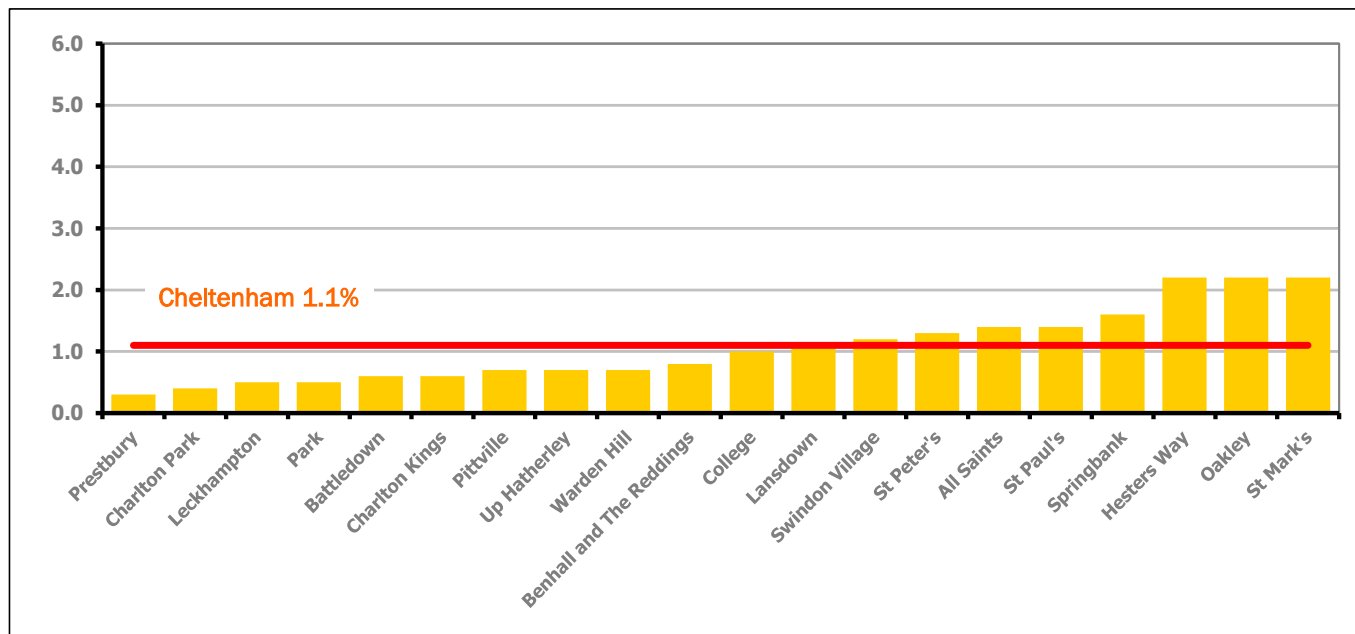


Figure 6 shows the claimant rates for Cheltenham Borough wards. The red line represents the average claimant rate across the Borough of 1.1%. Eight wards lie above the average.

Table 5: Analysis of Claimant Count at Cheltenham Borough ward level - June 2015

District	Ward	Rate	Rank*
Cheltenham	Prestbury	0.3	8
Cheltenham	Charlton Park	0.4	20
Cheltenham	Leckhampton	0.5	32
Cheltenham	Park	0.5	32
Cheltenham	Battledown	0.6	48
Cheltenham	Charlton Kings	0.6	48
Cheltenham	Pittville	0.7	66
Cheltenham	Up Hatherley	0.7	66
Cheltenham	Warden Hill	0.7	66
Cheltenham	Benhall and The Reddings	0.8	78
Cheltenham	College	1.0	101
Cheltenham	Lansdown	1.1	105
Cheltenham	Swindon Village	1.2	111
Cheltenham	St Peter's	1.3	114
Cheltenham	All Saints	1.4	119
Cheltenham	St Paul's	1.4	119
Cheltenham	Springbank	1.6	123
Cheltenham	Hesters Way	2.2	132
Cheltenham	Oakley	2.2	132
Cheltenham	St Mark's	2.2	132

bottom 10% of county

first quartile of county

second quartile of county

third quartile of county

fourth quartile of county

highest 10% of county

\* 1 = "best" and 142 = "worst"

Table 5 shows overall claimant rates for Cheltenham Borough wards and their position relative to all wards in Gloucestershire.

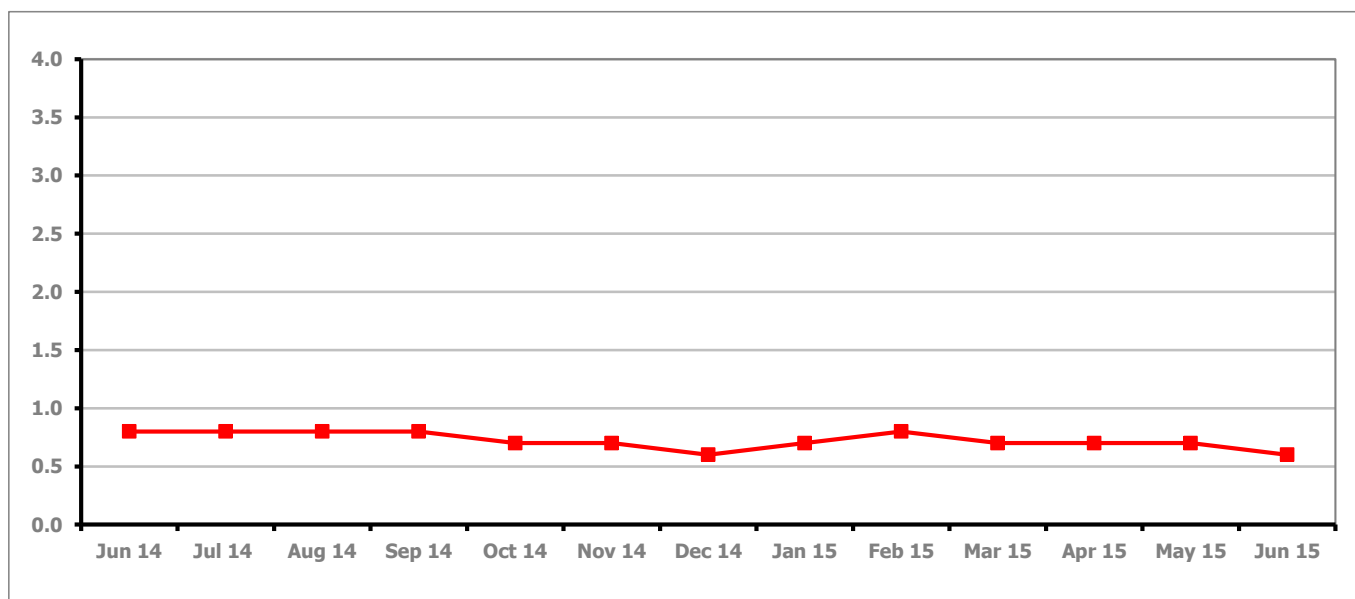
**PART 4: LOCAL AUTHORITY DISTRICT AND WARD ANALYSIS****4.2 Cotswold District****Claimant Rate and Claimant Count***Figure 7: Cotswold District claimant rate over the last year*

Figure 7 shows the claimant rate in Cotswold District decreased in June 2015 to 0.6%.

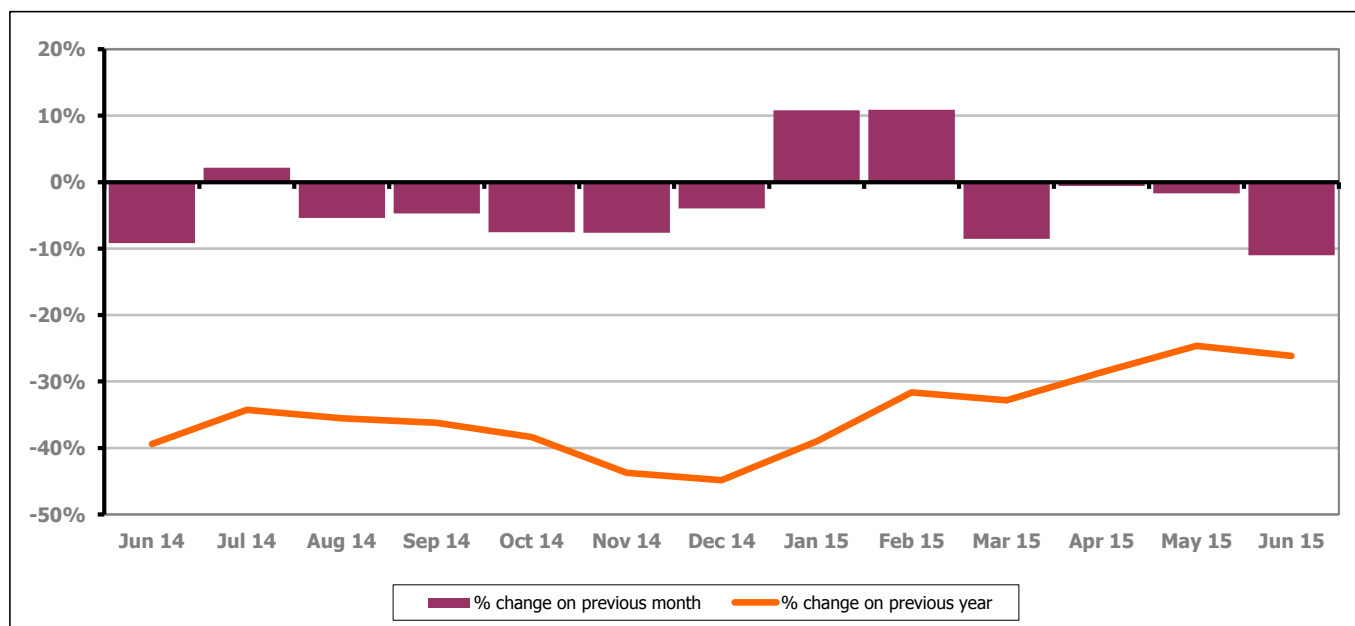
*Figure 8: Cotswold District claimants - Month on Month and Year on Year change*

Figure 8 shows the claimant count decreased by 11.0% since May 2015. The change on the previous year has decreased between May and June 2015 to -26.1%.



## PART 4: LOCAL AUTHORITY DISTRICT AND WARD ANALYSIS

### 4.2 Cotswold District continued...

Figure 9: Claimant rates across Cotswold District wards - June 2015

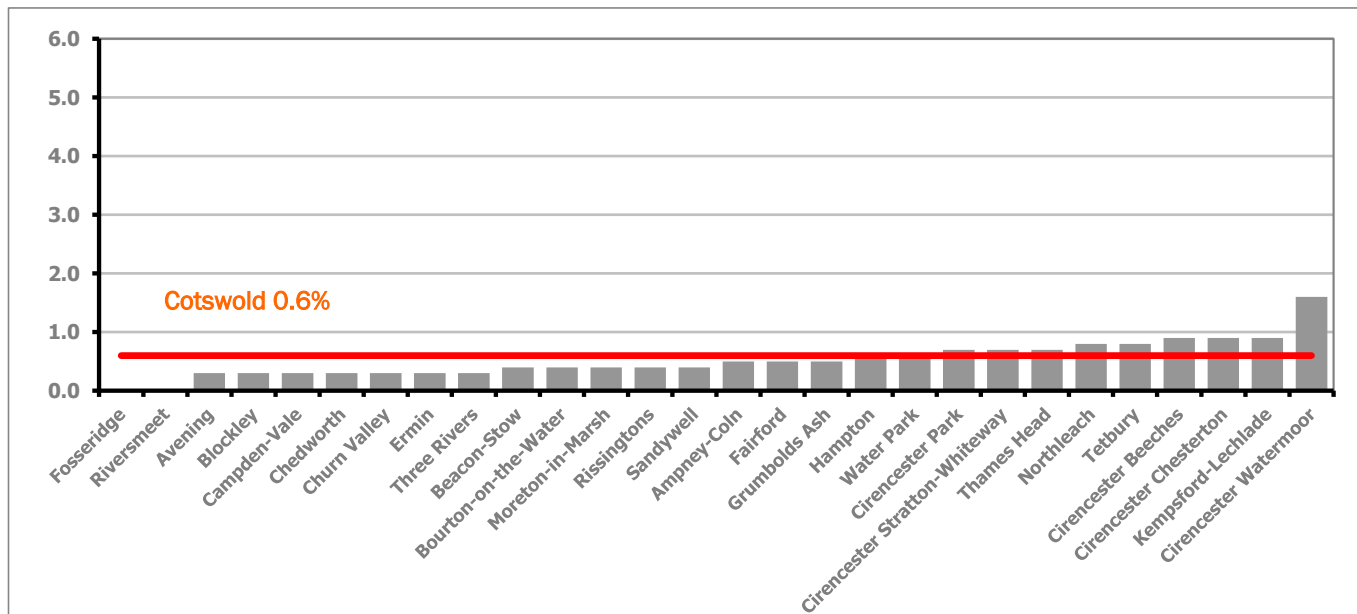
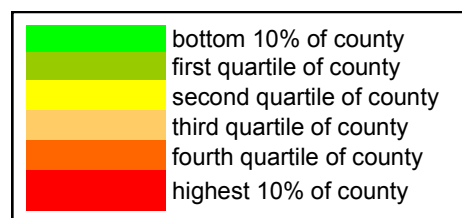


Figure 9 shows the claimant rates for Cotswold District wards. The red line represents the average claimant rate across the District of 0.6%. Nine wards lie above the average.

Table 6: Analysis of Claimant Count at Cotswold District ward level - June 2015

District	Ward	Rate	Rank*
Cotswolds	Fosserridge	<0.3	1
Cotswolds	Riversmeet	<0.3	1
Cotswolds	Avening	0.3	8
Cotswolds	Blockley	0.3	8
Cotswolds	Campden-Vale	0.3	8
Cotswolds	Chedworth	0.3	8
Cotswolds	Churn Valley	0.3	8
Cotswolds	Ermin	0.3	8
Cotswolds	Three Rivers	0.3	8
Cotswolds	Beacon-Stow	0.4	20
Cotswolds	Bourton-on-the-Water	0.4	20
Cotswolds	Moreton-in-Marsh	0.4	20
Cotswolds	Rissingtons	0.4	20
Cotswolds	Sandywell	0.4	20
Cotswolds	Ampney-Coln	0.5	32
Cotswolds	Fairford	0.5	32
Cotswolds	Grumbolds Ash	0.5	32
Cotswolds	Hampton	0.6	48
Cotswolds	Water Park	0.6	48
Cotswolds	Cirencester Park	0.7	66
Cotswolds	Cirencester Stratton-Whiteway	0.7	66
Cotswolds	Thames Head	0.7	66
Cotswolds	Northleach	0.8	78
Cotswolds	Tetbury	0.8	78
Cotswolds	Cirencester Beeches	0.9	92
Cotswolds	Cirencester Chesterton	0.9	92
Cotswolds	Kempsford-Lechlade	0.9	92
Cotswolds	Cirencester Watermoor	1.6	123



\* 1 = "best" and 142 = "worst"

Table 6 shows overall claimant rates for Cotswold District wards and their position relative to all wards in Gloucestershire.

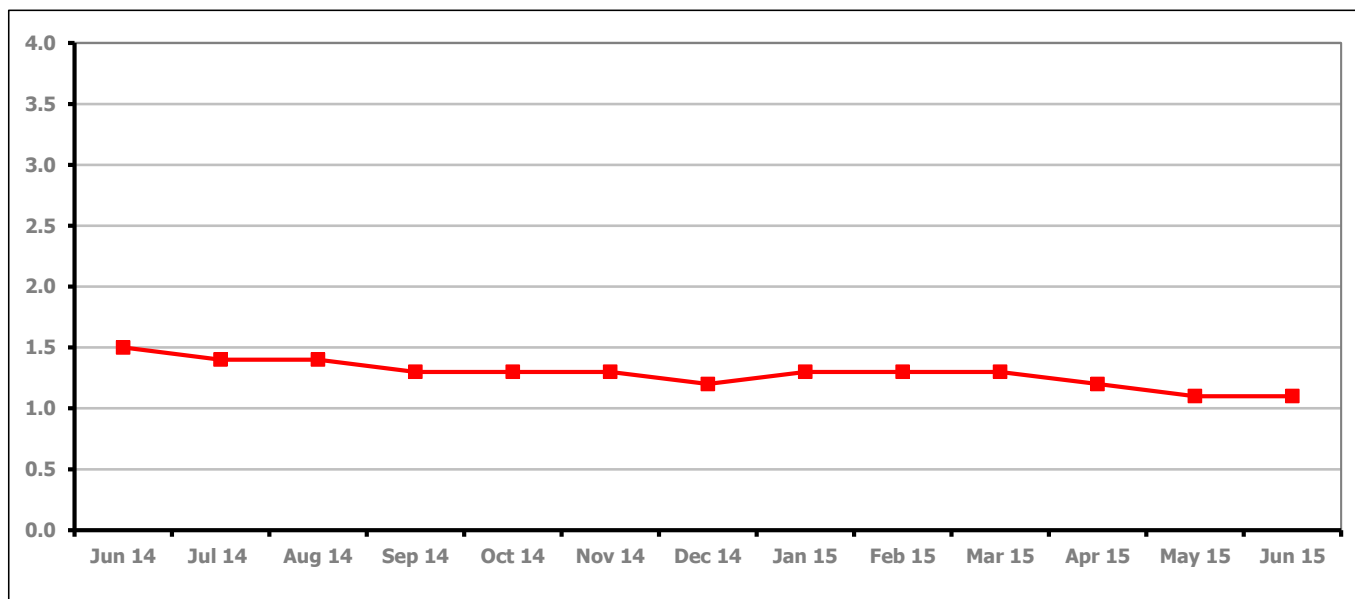
**PART 4: LOCAL AUTHORITY DISTRICT AND WARD ANALYSIS****4.3 Forest of Dean District****Claimant Rate and Claimant Count***Figure 10: Forest of Dean District claimant rate over the last year*

Figure 10 shows the claimant rate in the Forest of Dean remained the same as last month at 1.1%.

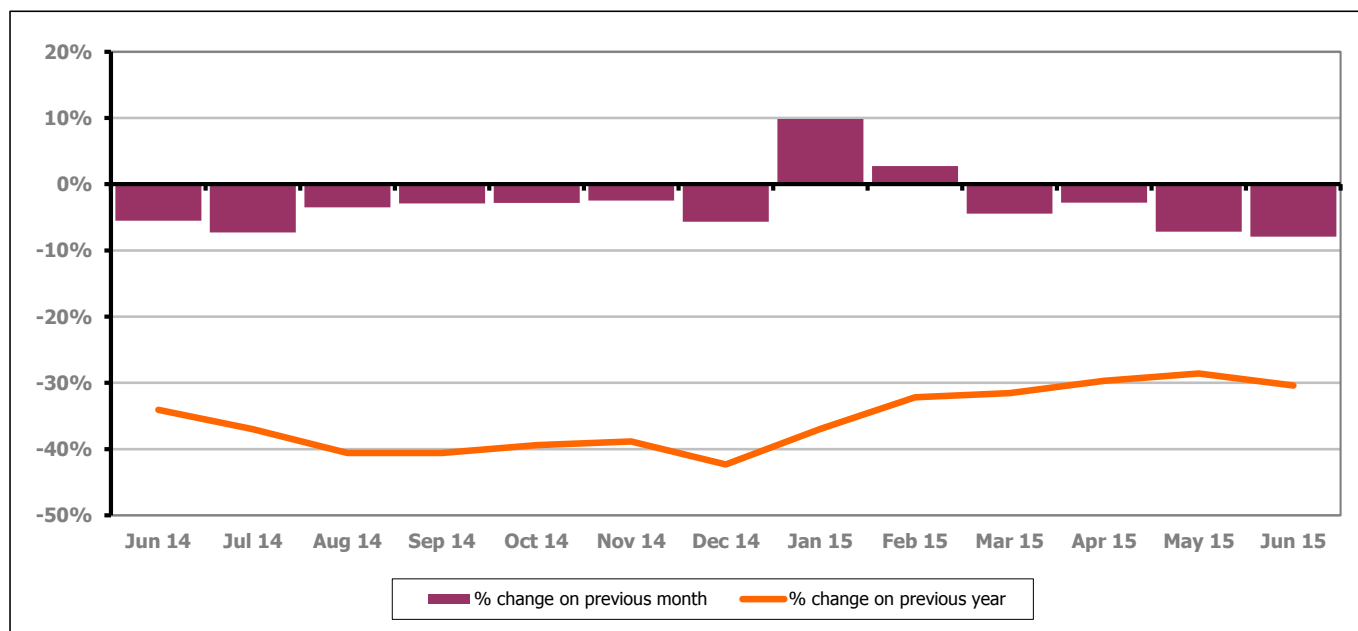
*Figure 11: Forest of Dean District claimants - Month on Month and Year on Year change*

Figure 11 shows the claimant count decreased by 7.9% since May 2015. The change on the previous year has decreased between May and June 2015 to -30.4%.

## PART 4: LOCAL AUTHORITY DISTRICT AND WARD ANALYSIS

### 4.3 Forest of Dean District continued...

Figure 12: Claimant rates across Forest of Dean District wards - June 2015

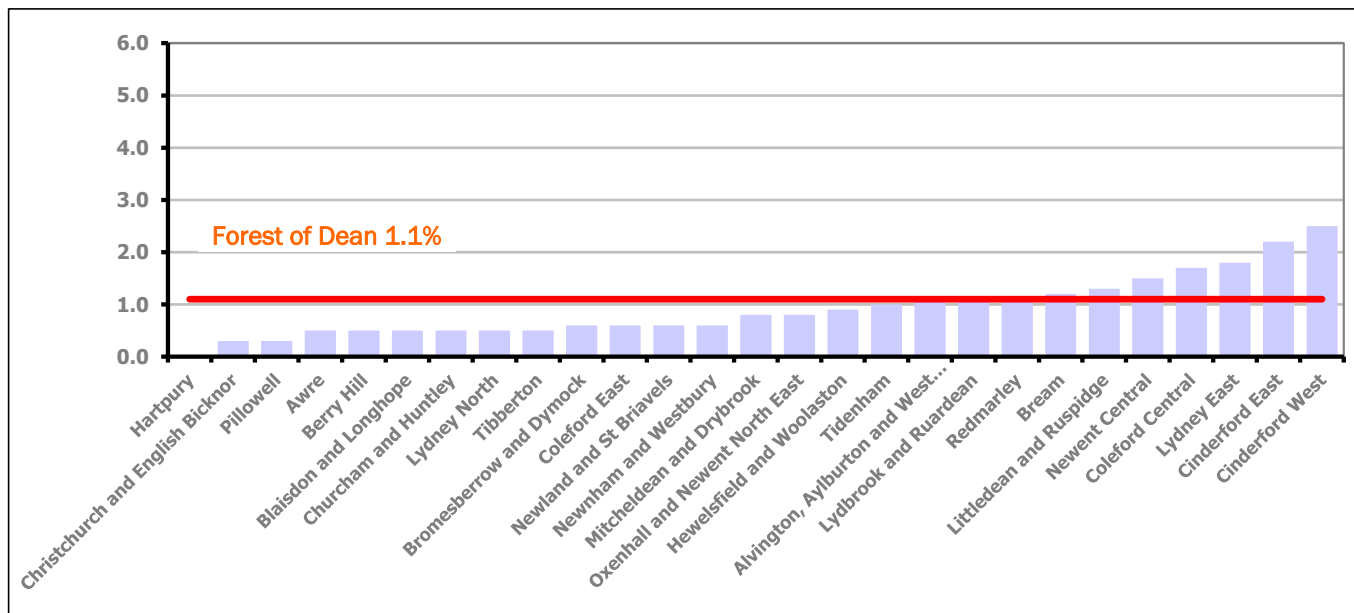
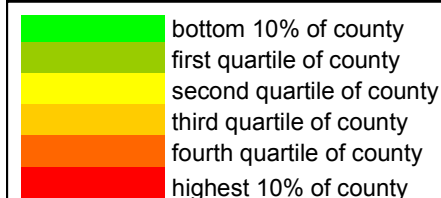


Figure 12 shows the claimant rates for Forest of Dean District wards. The red line represents the average claimant rate across the District of 1.1%. Seven wards lie above the average.

Table 7: Analysis of Claimant Count at Forest of Dean District ward level - June 2015

District	Ward	Rate	Rank*
Forest	Hartpur	<0.3	1
Forest	Christchurch and English Bicknor	0.3	8
Forest	Pillowell	0.3	8
Forest	Awre	0.5	32
Forest	Berry Hill	0.5	32
Forest	Blaisdon and Longhope	0.5	32
Forest	Churcham and Huntley	0.5	32
Forest	Lydney North	0.5	32
Forest	Tibberton	0.5	32
Forest	Bromesberrrow and Dymock	0.6	48
Forest	Coleford East	0.6	48
Forest	Newland and St Briavels	0.6	48
Forest	Newnham and Westbury	0.6	48
Forest	Mitcheldean and Drybrook	0.8	78
Forest	Oxenhall and Newent North East	0.8	78
Forest	Hewelsfield and Woolaston	0.9	92
Forest	Tidenham	1.0	101
Forest	Alvington, Aylburton and West Lydney	1.1	105
Forest	Lydbrook and Ruardean	1.1	105
Forest	Redmarley	1.1	105
Forest	Bream	1.2	111
Forest	Littledean and Ruspidge	1.3	114
Forest	Newent Central	1.5	122
Forest	Coleford Central	1.7	127
Forest	Lydney East	1.8	130
Forest	Cinderford East	2.2	132
Forest	Cinderford West	2.5	137



\* 1 = "best" and 142 = "worst"

Table 7 shows overall claimant rates for the Forest of Dean District wards and their position relative to all wards in Gloucestershire.

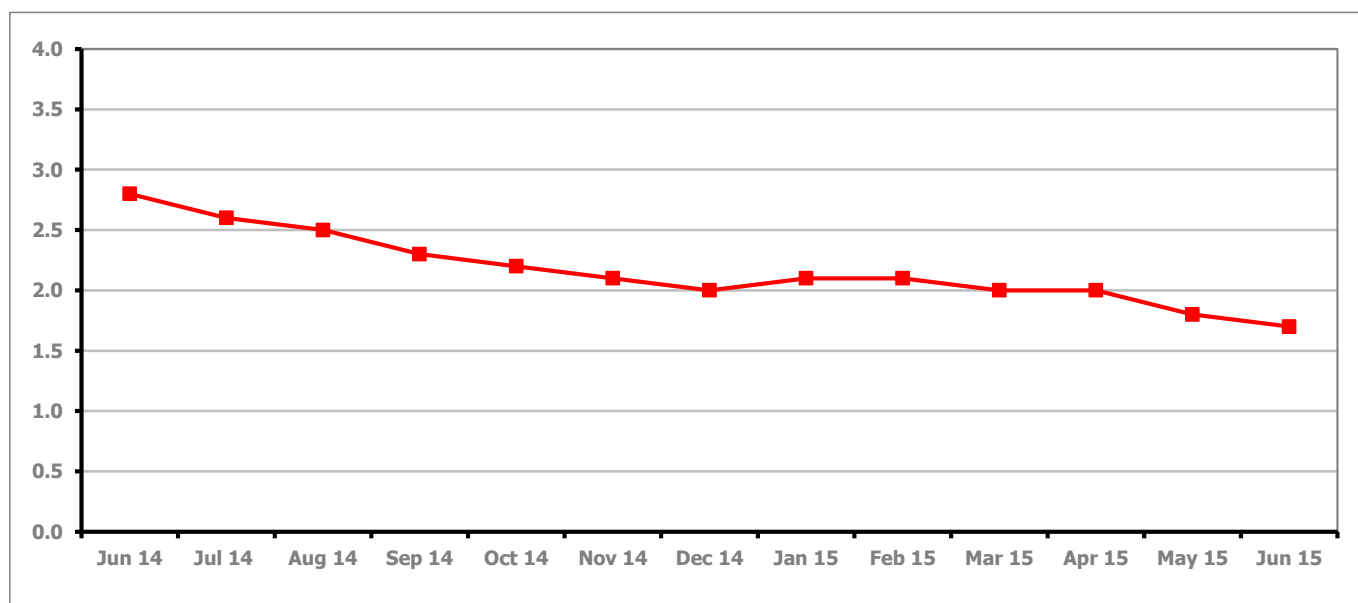
**PART 4: LOCAL AUTHORITY DISTRICT AND WARD ANALYSIS****4.4 Gloucester City****Claimant Rate and Claimant Count***Figure 13: Gloucester City claimant rate over the last year*

Figure 13 shows the claimant rate for Gloucester City declined in June 2015 to 1.7%.

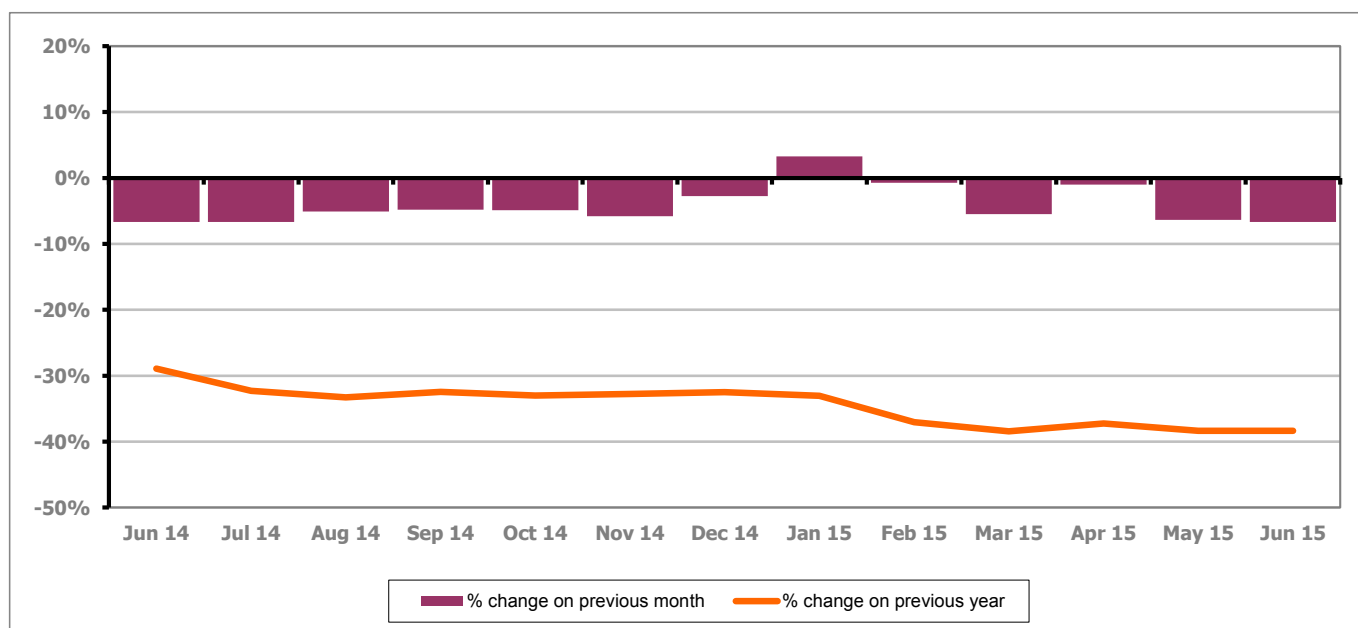
*Figure 14: Gloucester City claimants - Month on Month and Year on Year change*

Figure 14 shows the monthly claimant count decreased by 6.7% since May 2015. The change on the previous year has remained the same at -38.4%.

## PART 4: LOCAL AUTHORITY DISTRICT AND WARD ANALYSIS

### 4.4 Gloucester City continued...

Figure 15: Claimant rates across Gloucester City wards - June 2015

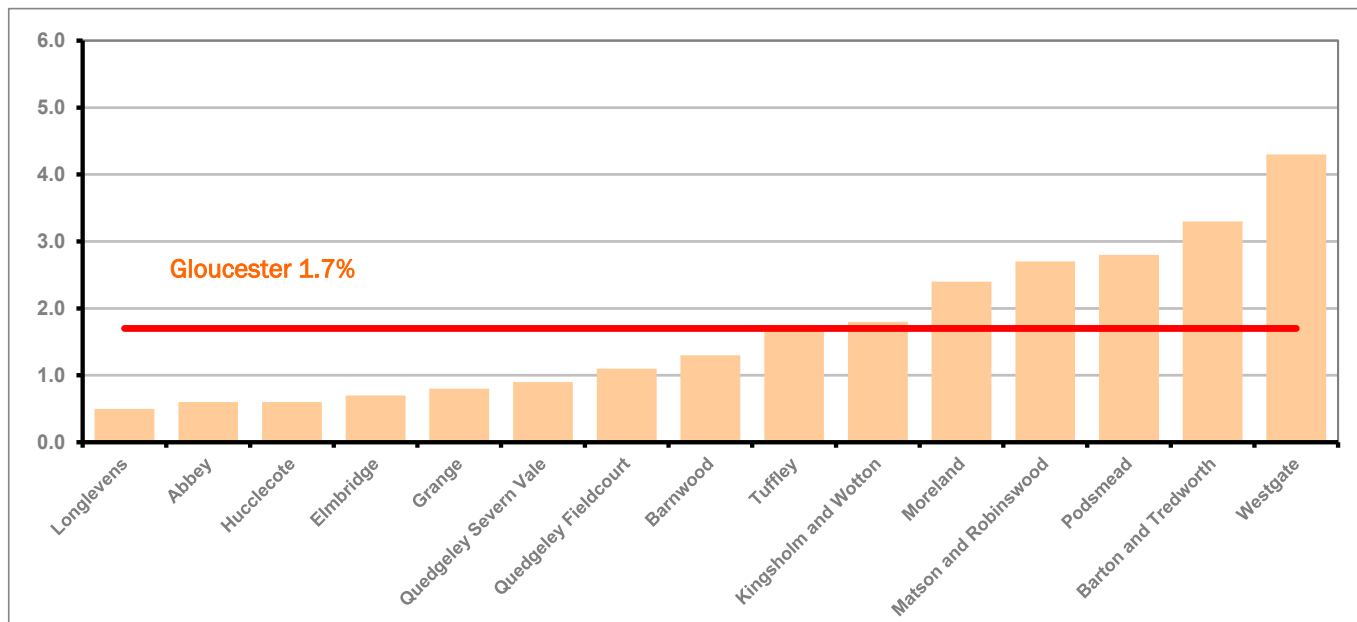
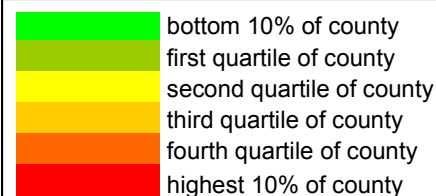


Figure 15 shows the claimant rates for Gloucester City district wards. The red line represents the average claimant rate across the City of 1.7%. Six wards lie above the average.

Table 8: Analysis of Claimant Count at Gloucester City ward level - June 2015

District	Ward	Rate	Rank*
Gloucester	Longlevens	0.5	32
Gloucester	Abbey	0.6	48
Gloucester	Hucclecote	0.6	48
Gloucester	Elmbridge	0.7	66
Gloucester	Grange	0.8	78
Gloucester	Quedgeley Severn Vale	0.9	92
Gloucester	Quedgeley Fieldcourt	1.1	105
Gloucester	Barnwood	1.3	114
Gloucester	Tuffley	1.7	127
Gloucester	Kingsholm and Wotton	1.8	130
Gloucester	Moreland	2.4	136
Gloucester	Matson and Robinswood	2.7	138
Gloucester	Podsmead	2.8	139
Gloucester	Barton and Tredworth	3.3	141
Gloucester	Westgate	4.3	142



\* 1 = "best" and 142 = "worst"

Table 8 shows overall claimant rates for Gloucester City wards and their position relative to all wards in Gloucestershire.

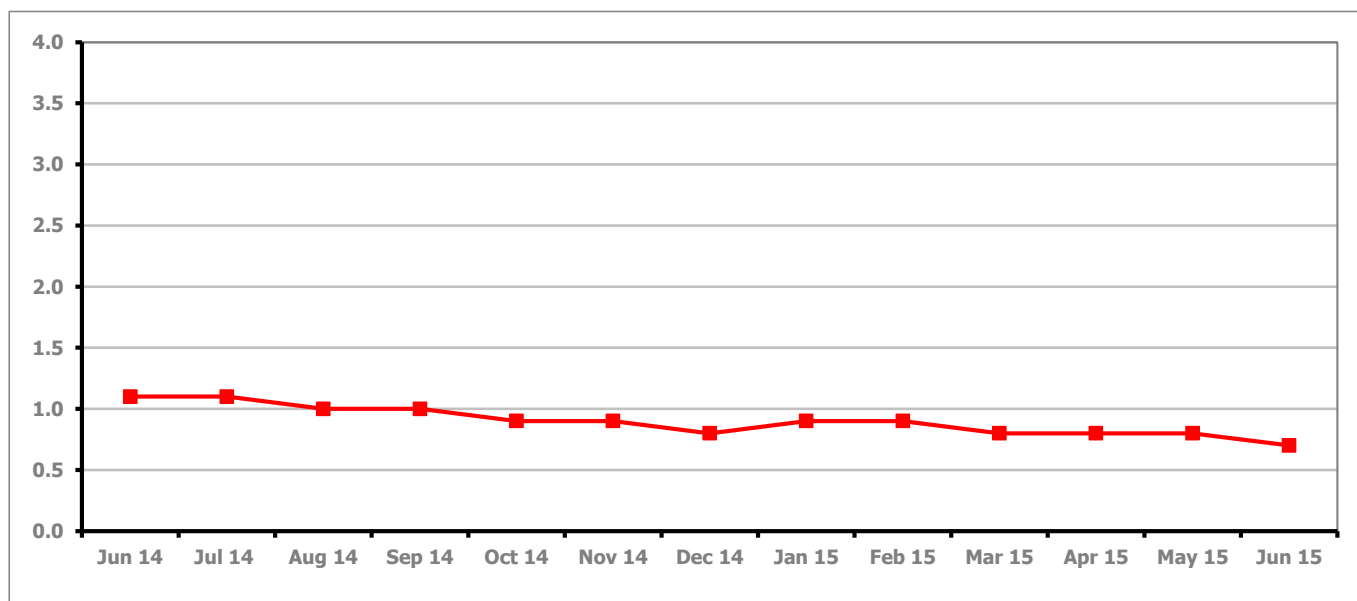
**PART 4: LOCAL AUTHORITY DISTRICT AND WARD ANALYSIS****4.5 Stroud District****Claimant Rate and Claimant Count***Figure 16: Stroud District claimant rate over the last year*

Figure 16 shows the claimant rate for Stroud declined in June 2015 to 0.7%.

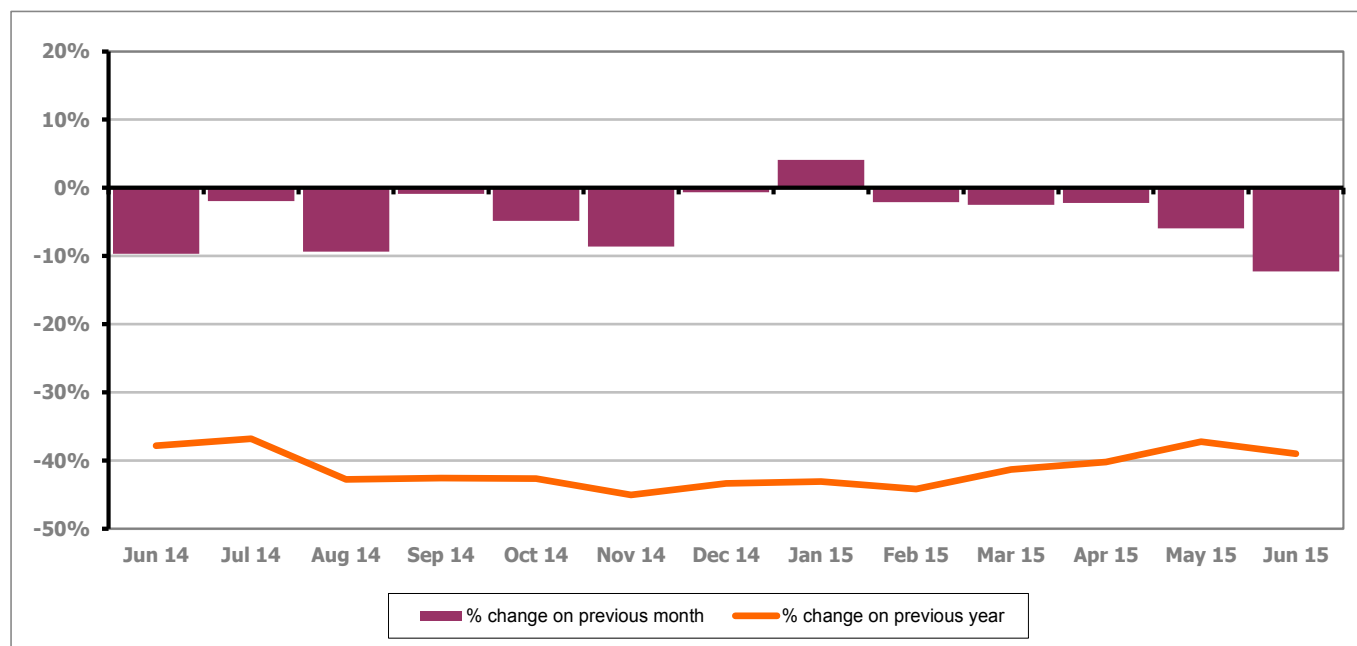
*Figure 17: Stroud District claimants - Month on Month and Year on Year change*

Figure 17 shows the monthly claimant count decreased by 12.3% since May 2015. The change on the previous year has decreased between May and June 2015 to -39.0%.

## PART 4: LOCAL AUTHORITY AND DISTRICT ANALYSIS

### 4.5 Stroud District continued...

Figure 18: Claimant rates across Stroud District wards - June 2015

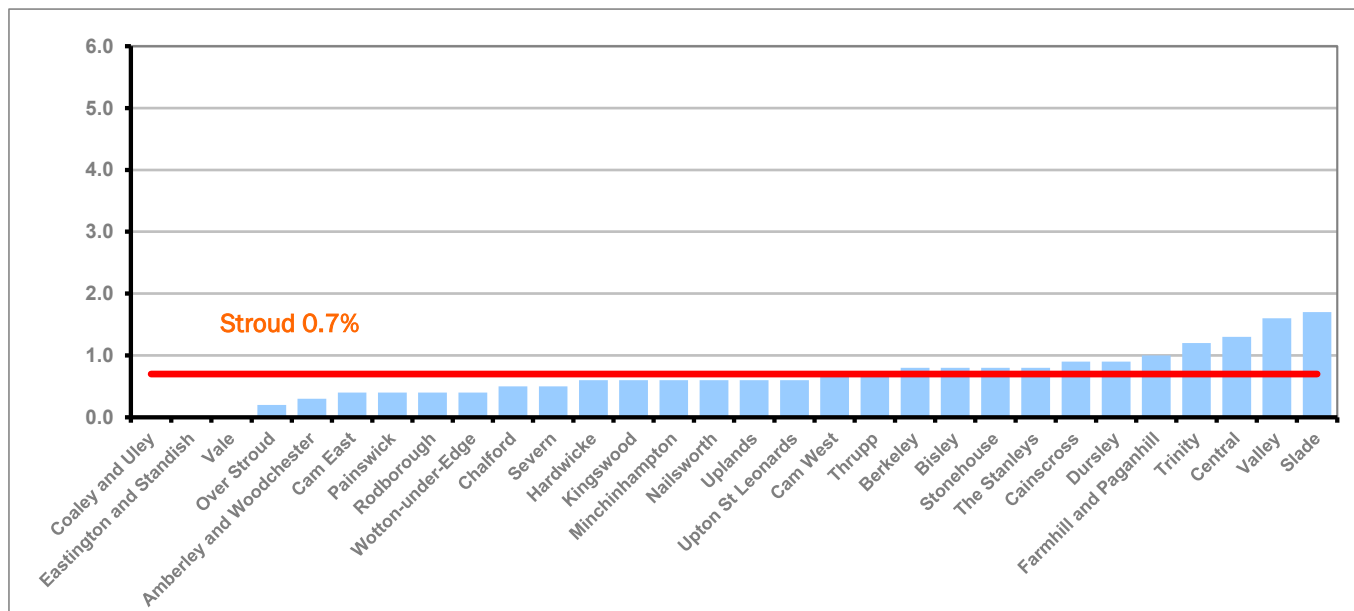
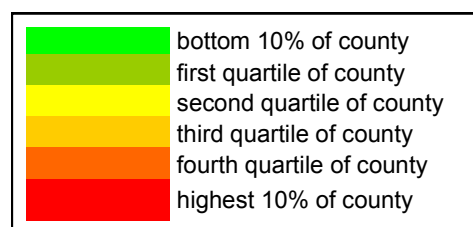


Figure 18 shows the claimant rates in Stroud District wards. The red line represents the average claimant rate across the District of 0.7%. Eleven wards are above the average.

Table 9: Analysis of Claimant Count at Stroud District ward level - June 2015

District	Ward	Rate	Rank*
Stroud	Coaley and Uley	<0.2	1
Stroud	Eastington and Standish	<0.2	1
Stroud	Vale	<0.2	1
Stroud	Over Stroud	0.2	7
Stroud	Amberley and Woodchester	0.3	8
Stroud	Cam East	0.4	20
Stroud	Painswick	0.4	20
Stroud	Rodborough	0.4	20
Stroud	Wotton-under-Edge	0.4	20
Stroud	Chalford	0.5	32
Stroud	Severn	0.5	32
Stroud	Hardwicke	0.6	48
Stroud	Kingswood	0.6	48
Stroud	Minchinhampton	0.6	48
Stroud	Nailsworth	0.6	48
Stroud	Uplands	0.6	48
Stroud	Upton St Leonards	0.6	48
Stroud	Cam West	0.7	66
Stroud	Thrupp	0.7	66
Stroud	Berkeley	0.8	78
Stroud	Bisley	0.8	78
Stroud	Stonehouse	0.8	78
Stroud	The Stanleys	0.8	78
Stroud	Cainscross	0.9	92
Stroud	Dursley	0.9	92
Stroud	Farmhill and Paganhill	1.0	101
Stroud	Trinity	1.2	111
Stroud	Central	1.3	114
Stroud	Valley	1.6	123
Stroud	Slade	1.7	127



\* 1 = "best" and 142 = "worst"

Table 9 shows overall claimant rates for Stroud District wards and their position relative to all wards in Gloucestershire.

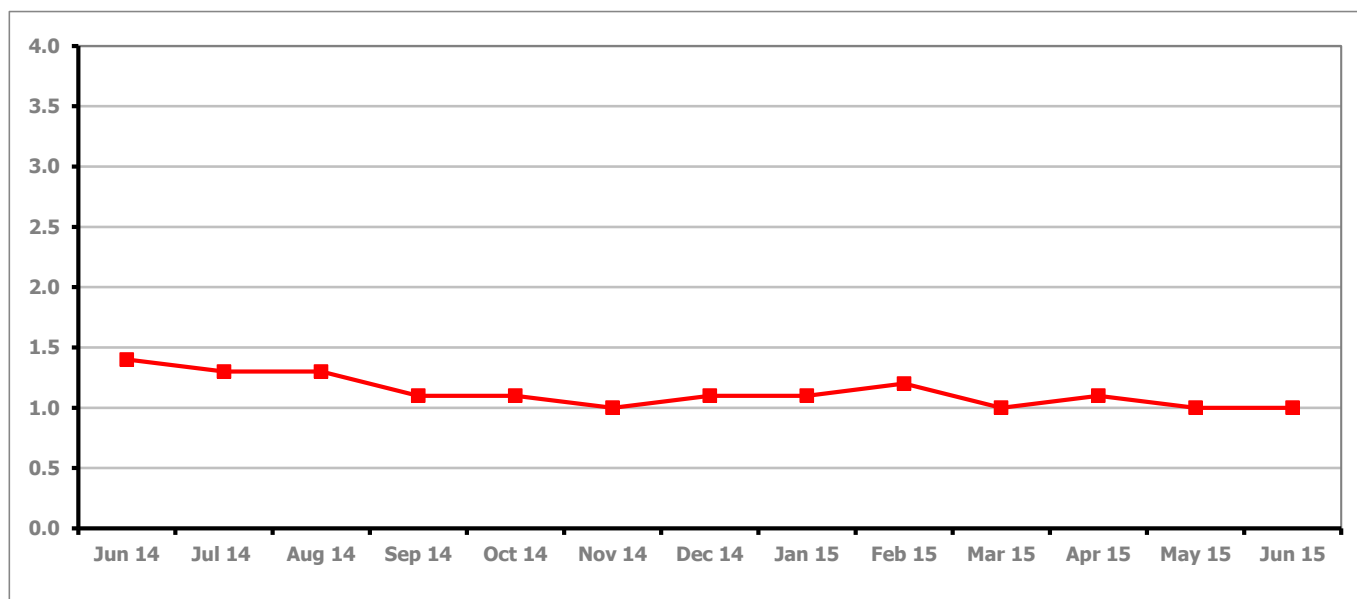
**PART 4: LOCAL AUTHORITY DISTRICT AND WARD ANALYSIS****4.6 Tewkesbury District****Claimant Rate and Claimant Count***Figure 19: Tewkesbury District claimant rate over the last year*

Figure 19 shows the claimant rate for Tewkesbury District remained the same as last month at 1.0%

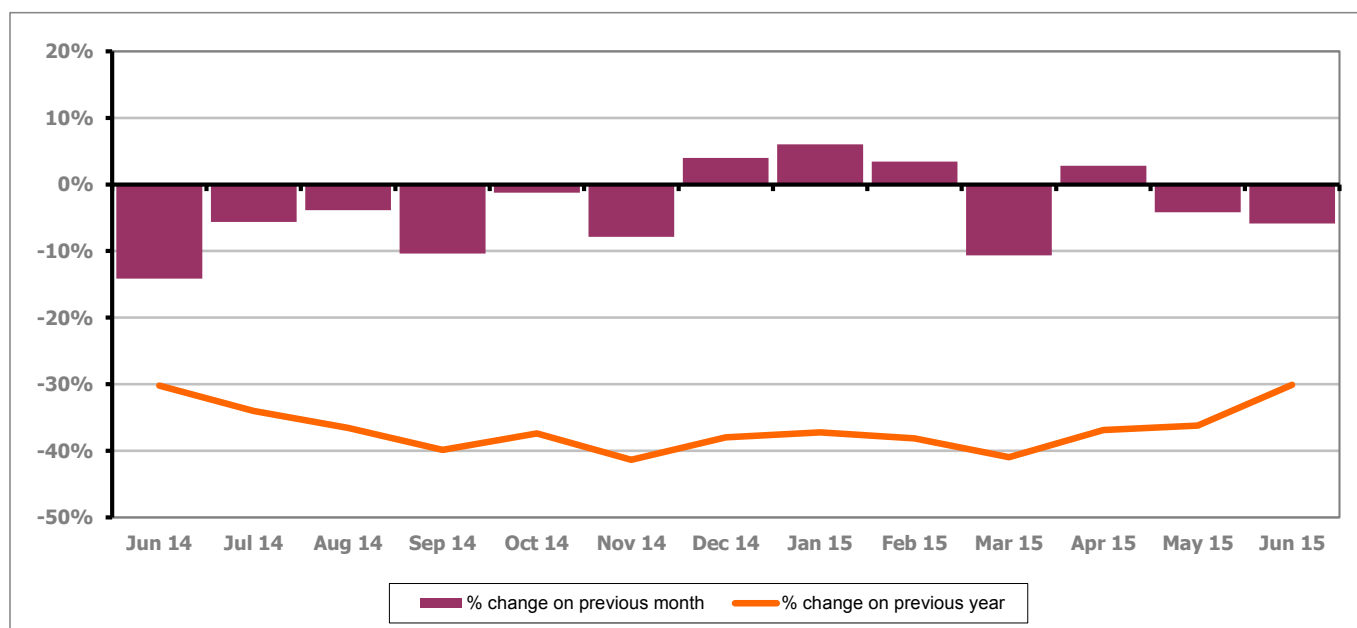
*Figure 20: Tewkesbury District claimants - Month on Month and Year on Year change*

Figure 20 shows that the monthly claimant count decreased by 5.9% since May 2015. The change on the previous year increased between May and June 2015 to -30.1%.



## PART 4: LOCAL AUTHORITY AND DISTRICT ANALYSIS

### 4.6 Tewkesbury District continued...

Figure 21: Claimant rates across Tewkesbury District wards - June 2015

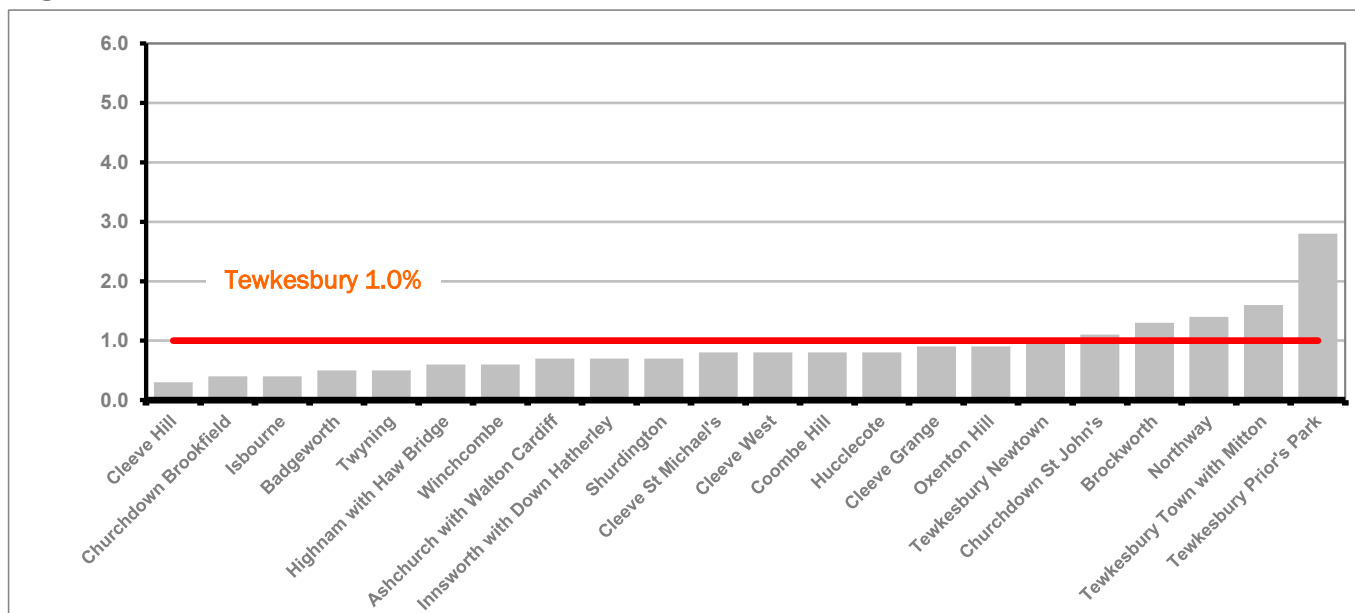


Figure 21 shows the claimant rates in Tewkesbury District wards. The red line represents the average claimant rate across the District of 1.0% and five wards are above the average.

Table 10: Analysis of Claimant Count at Tewkesbury District level - June 2015

District	Ward	Rate	Rank*
Tewkesbury	Cleeve Hill	0.3	8
Tewkesbury	Churchdown Brookfield	0.4	20
Tewkesbury	Isbourne	0.4	20
Tewkesbury	Badgeworth	0.5	32
Tewkesbury	Twynning	0.5	32
Tewkesbury	Highnam with Haw Bridge	0.6	48
Tewkesbury	Winchcombe	0.6	48
Tewkesbury	Ashchurch with Walton Cardiff	0.7	66
Tewkesbury	Innsworth with Down Hatherley	0.7	66
Tewkesbury	Shurdington	0.7	66
Tewkesbury	Cleeve St Michael's	0.8	78
Tewkesbury	Cleeve West	0.8	78
Tewkesbury	Coombe Hill	0.8	78
Tewkesbury	Hucclecote	0.8	78
Tewkesbury	Cleeve Grange	0.9	92
Tewkesbury	Oxenton Hill	0.9	92
Tewkesbury	Tewkesbury Newtown	1.0	101
Tewkesbury	Churchdown St John's	1.1	105
Tewkesbury	Brockworth	1.3	114
Tewkesbury	Northway	1.4	119
Tewkesbury	Tewkesbury Town with Mitton	1.6	123
Tewkesbury	Tewkesbury Prior's Park	2.8	139

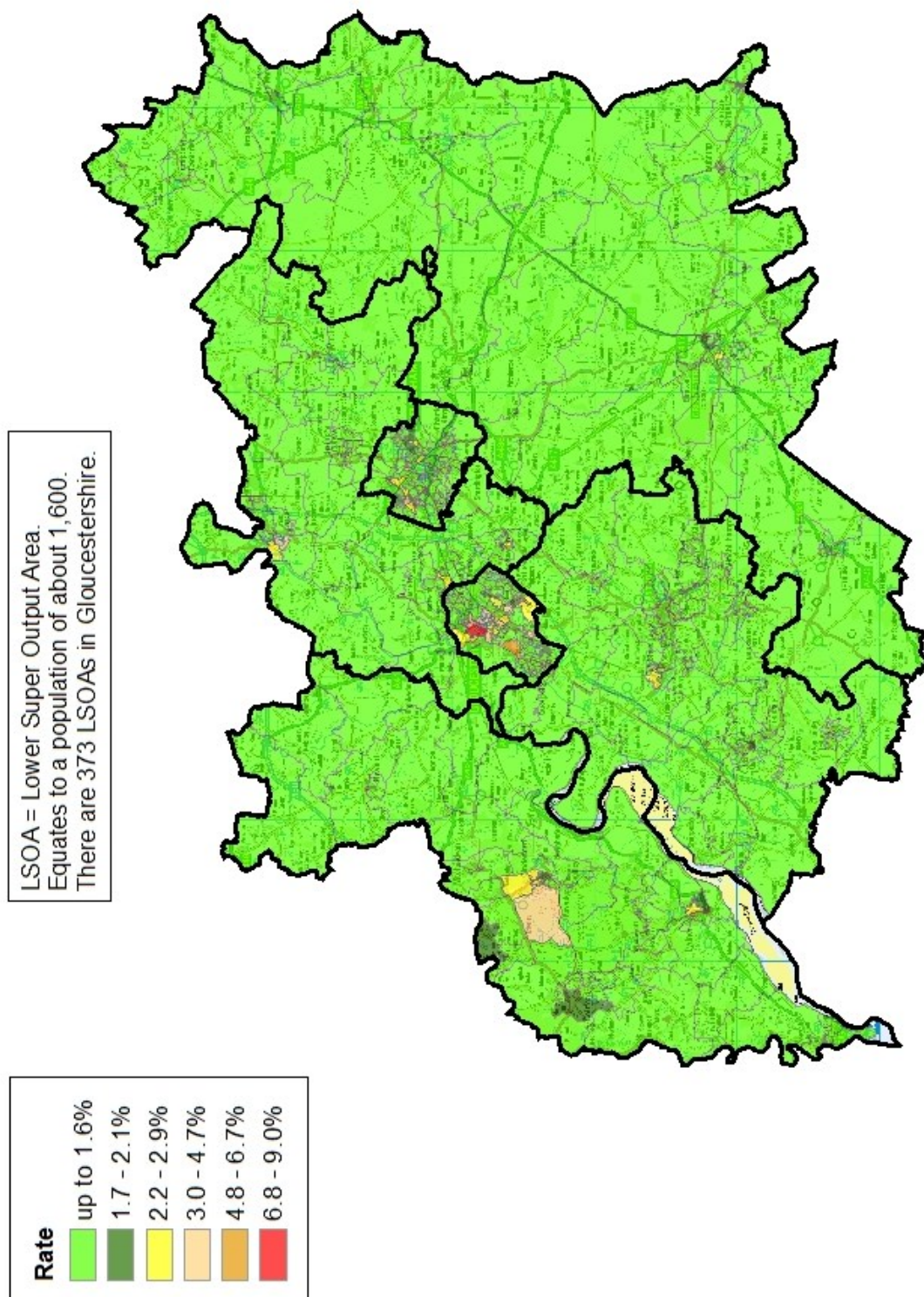
	bottom 10% of county
	first quartile of county
	second quartile of county
	third quartile of county
	fourth quartile of county
	highest 10% of county

\* 1 = "best" and 142 = "worst"

Table 10 shows overall claimant rates for Tewkesbury District wards and their position relative to all wards in Gloucestershire.

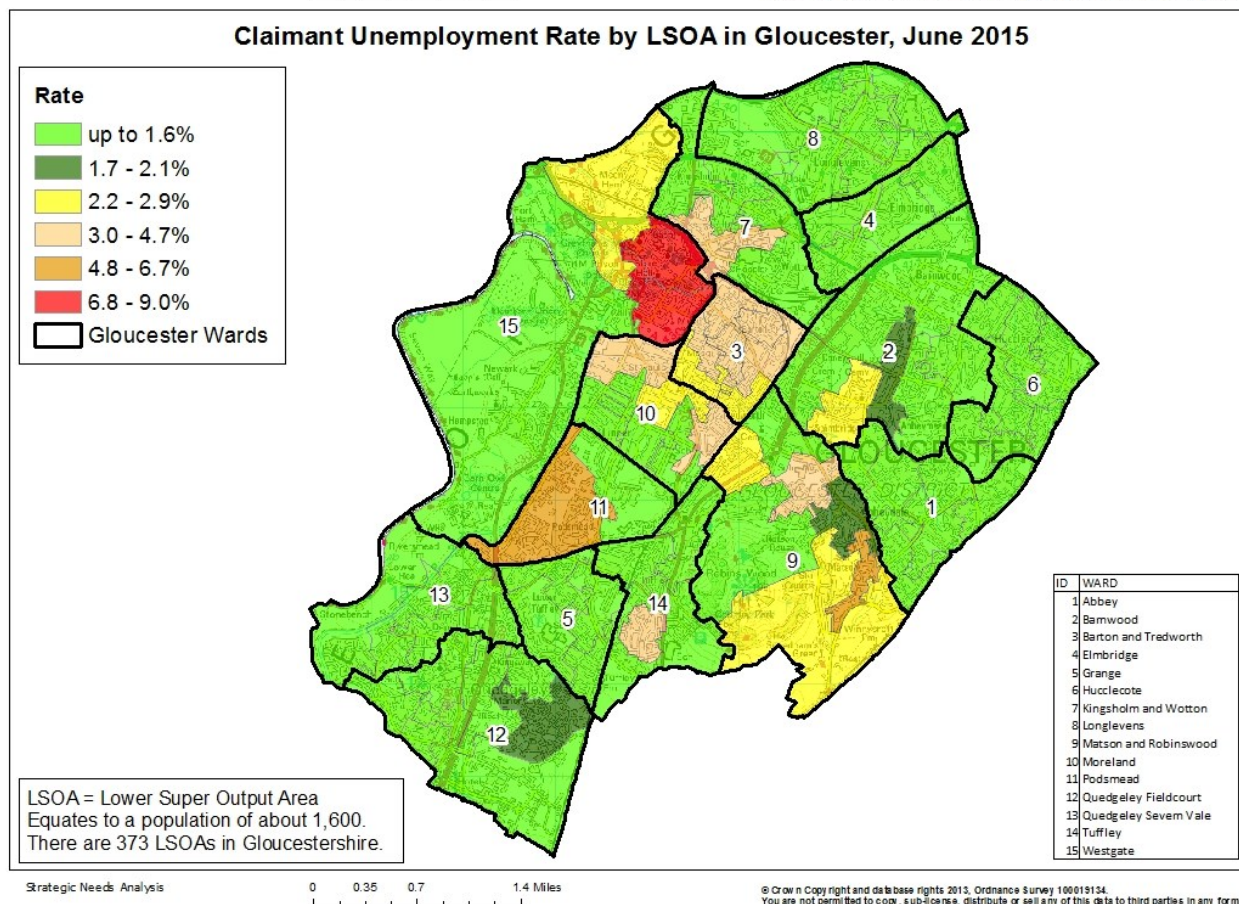
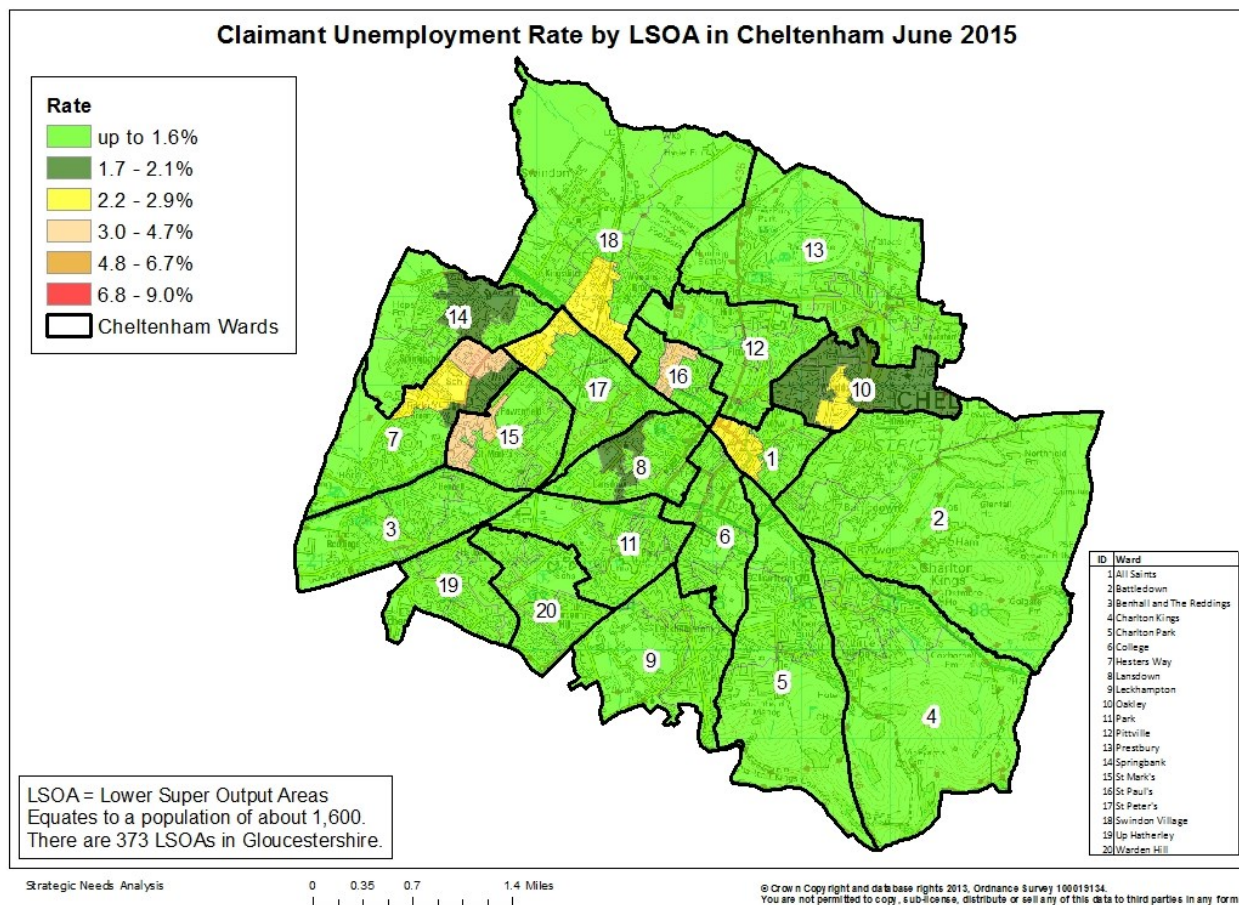
## PART 5: MAP SHOWING DISTRIBUTION OF CLAIMANT RATE ACROSS GLOUCESTERSHIRE

**Claimant Unemployment Rate by LSOA in Gloucestershire, June 2015**





## PART 5: MAP SHOWING DISTRIBUTION OF CLAIMANT RATE ACROSS GLOUCESTERSHIRE



## PART 6: YOUTH UNEMPLOYMENT(18-24 year olds)

### Youth Claimant Rate and Claimant Count

The claimant rate for young people is higher than for the working age (16-64) population with 1.8% of 18-24 year olds in Gloucestershire claiming Job Seekers Allowance (1.1% for working age).

Figure 22: Youth Claimant Rate for Gloucestershire, the South West and UK over the past year

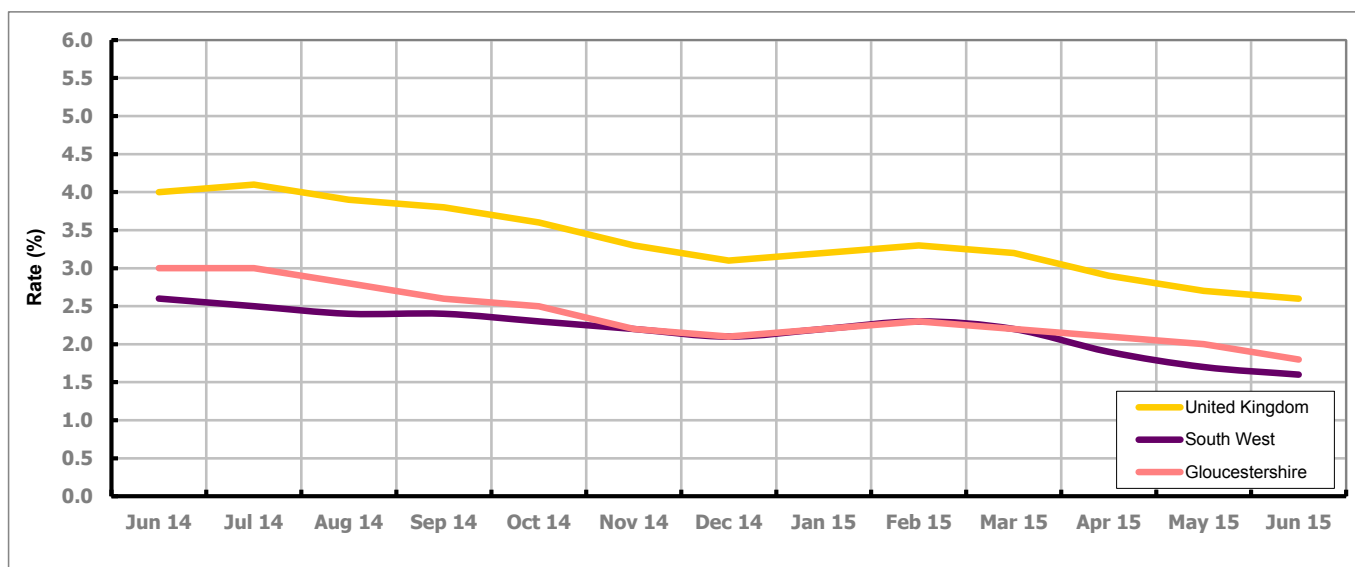


Figure 22 shows Gloucestershire's 18-24 claimant rate is higher than the South West average of 1.6%, but 0.8% lower than the UK average of 2.6%

Figure 23: Claimant Count for Gloucestershire over the past year

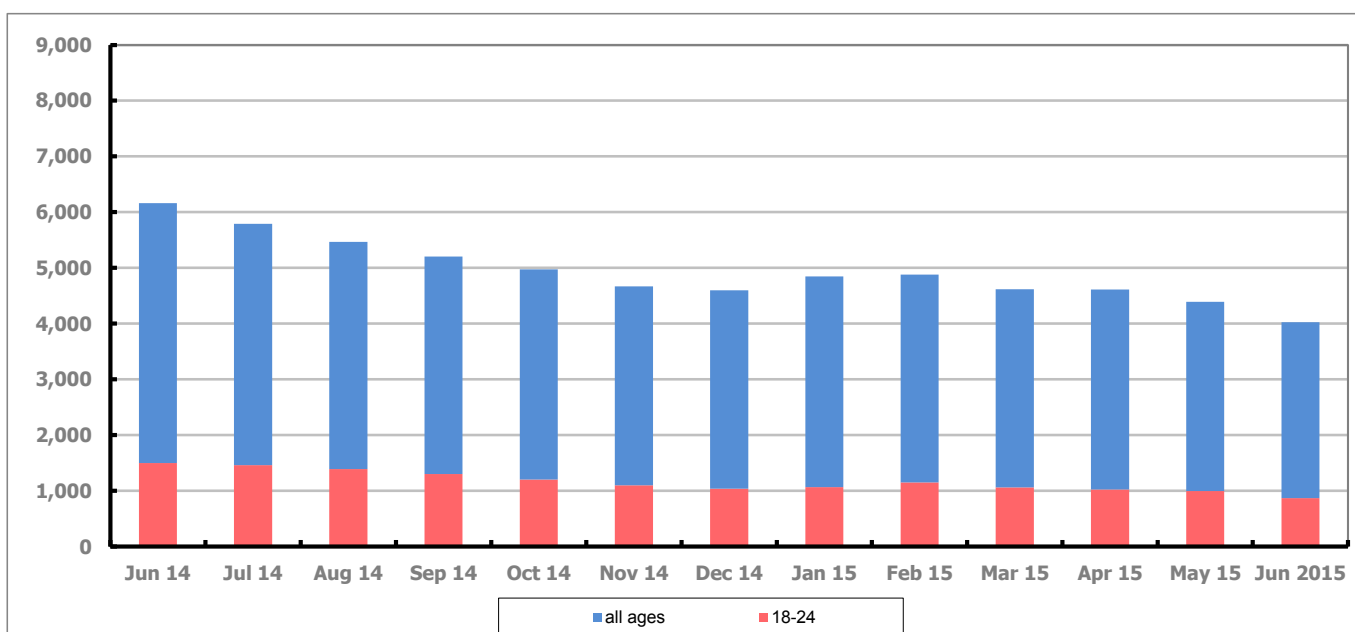


Figure 23 shows that in June 2015, 870 people aged 18-24 were claiming Job Seekers Allowance in Gloucestershire, this represents 21.6% of total working age claimants.

## PART 6: YOUTH UNEMPLOYMENT

### Youth Claimant Rate and Claimant Count

Figure 24: Youth Claimant Rate for Gloucestershire, the South West and UK over the past year

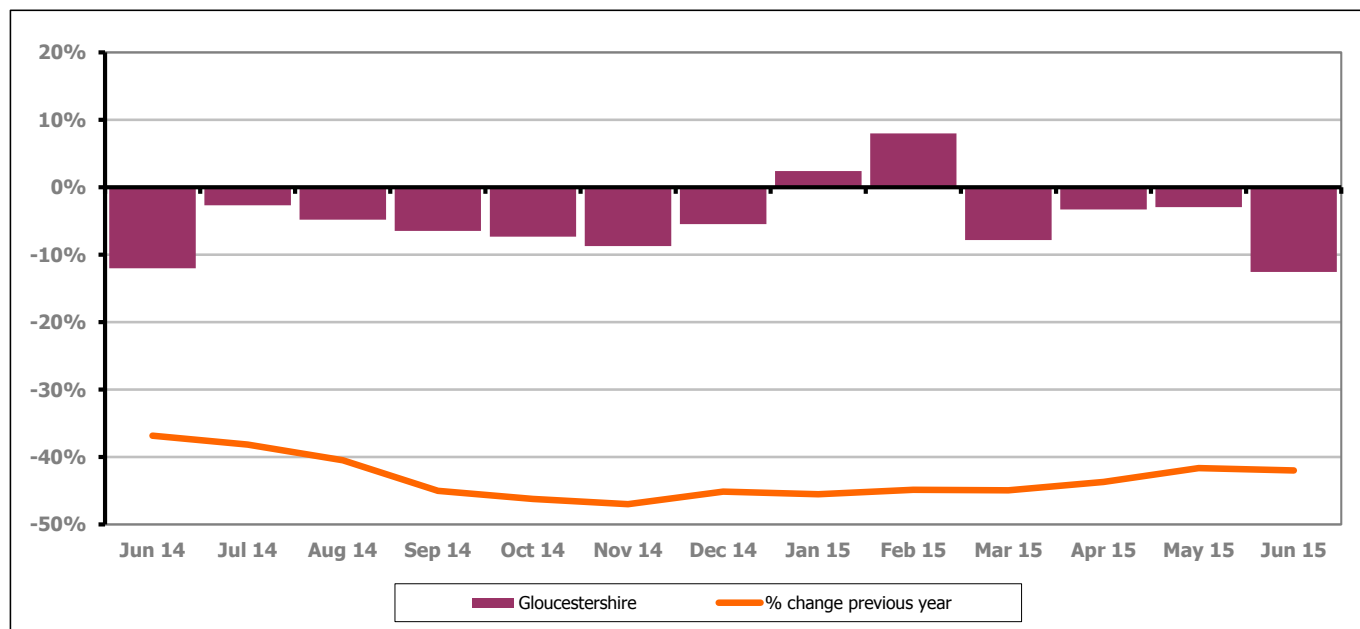


Figure 24 shows the number of young claimants decreased in June 2015 by 12.6% this represented 125 people. Over the last year the number of young claimants fell by 42.0% or 630 people.

### Youth unemployment and duration of claim

Figure 25: Duration of claim in the 18-24 year age group

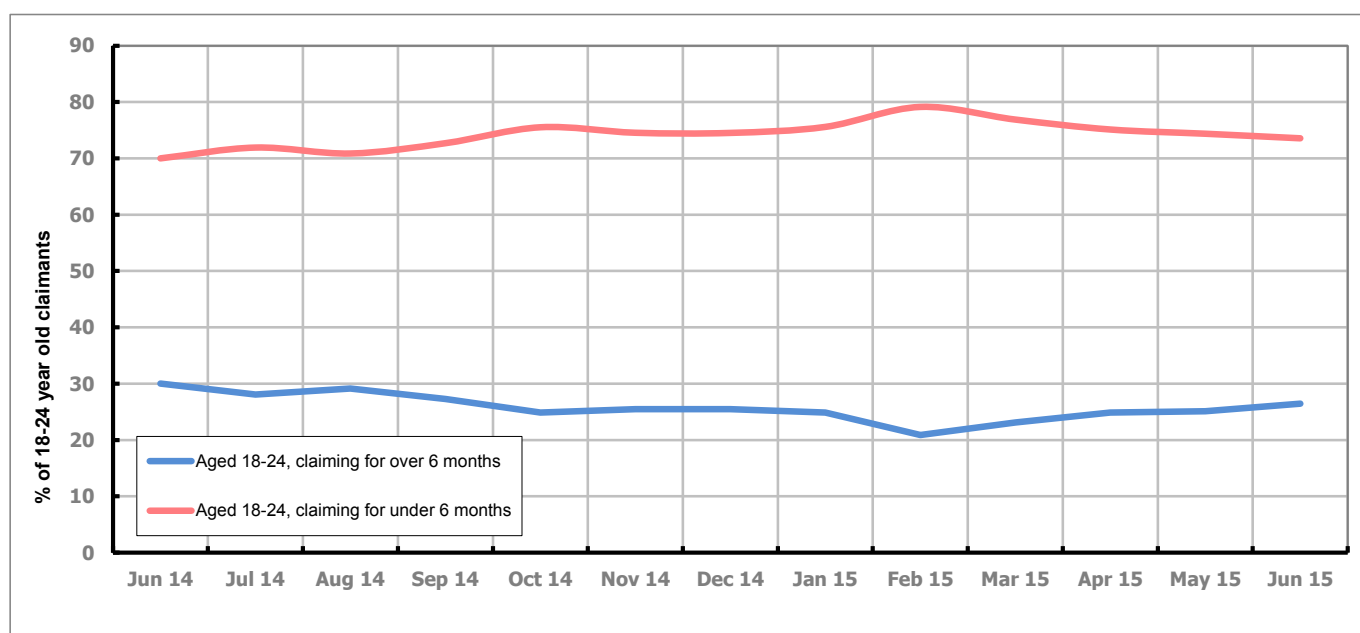


Figure 25 shows the proportion of 18-24 year olds claiming for less than six months decreased from 74.4% of 18-24 year old claimants in May to 73.6% in June 2015. During the same period those claiming for more than six months increased from 25.1% to 26.4%.

## PART 7: YOUNG PEOPLE NOT IN EDUCATION, EMPLOYMENT OR TRAINING (NEET) IN GLOUCESTERSHIRE

Data provided by Gloucestershire Youth Support Team on the situation of young people (16-18) in Gloucestershire who are not in education, employment or formal training.

Gloucestershire Youth Support Team is required to report performance with the 16-18 age range against nationally defined criteria for counting the NEET group. The NEET group includes young people actively seeking education, employment or training as well as those young people who are either not yet ready or who are unable to access these opportunities because of their personal circumstances. The figures quoted below include young people in both of these categories.

### Summary

At the end of June 2015 there were 448 young people aged 16-18 not in education, employment or training in Gloucestershire and this figure translates into an adjusted (\*) 16-18 NEET population of 3.61%. The total number of NEET young people decreased by 28 in June 2015 compared to May 2015. All districts saw a decrease in their figures.

### Total NEET Group by District Area

#### June 2015 NEET data

	Cheltenham	Cotswold	Forest	Gloucester	Stroud	Tewkesbury	Total
<b>Total NEET</b>	85	57	45	148	60	53	448
<b>Cohort</b>	2216	1795	1717	3968	2350	1451	13497
<b>% NEET</b>	3.84	3.18	2.62	3.73	2.55	3.65	3.61

If you would like to receive any further information on Gloucestershire's NEET strategy then please contact [Ruth.Critchlow@Prospects.co.uk](mailto:Ruth.Critchlow@Prospects.co.uk) or telephone 01452 426900.

(\*) Adjustment includes a proportion of young people aged 16-18 whose outcomes are not-known to Gloucestershire Youth Support Team.