

Unemployment Bulletin

Issue 88 November 2015

Contents

Part 1: Summary

A summary of unemployment data at district, County, regional and national level

1

Part 2: County

Unemployment figures for the County compared to the South West and the rest of the UK

3

Part 3: Districts

A comparative break down of unemployment figures by district

4

Part 4: Wards

Further breakdown of unemployment figures by ward:

Cheltenham	6
Cotswolds	8
Forest of Dean	10
Gloucester	12
Stroud	14
Tewkesbury	16

Part 5: Map

Distribution of claimant rate across Gloucestershire

18

Part 6: Youth Unemployment

Unemployment data for the 18-24 year old age group

20

Part 7: Young People

Data about Young People Not in Education, Employment or Training (NEET)

22

The Claimant Count is a measure of the number of people who are unemployed and claiming benefits. From 1996 until the recent introduction of Universal Credit, this was based on the number of people claiming Jobseeker's Allowance. However, since its introduction some unemployment benefit claimants will be claiming Universal Credit instead.

To reflect this change, the Claimant Count has been expanded to include people claiming Jobseeker's Allowance plus those who claim Universal Credit and who are out of work. For more information about Universal Credit please see the [ONS website](http://www.ons.gov.uk).

INTRODUCTION

The Unemployment Bulletin provides a monthly update on unemployment data for Gloucestershire, the South West region and the United Kingdom. It is produced by the Strategic Needs Analysis Team in the County Council's Strategy and Challenge function. The data is sourced from the Office for National Statistics via Nomis (www.nomis.co.uk).

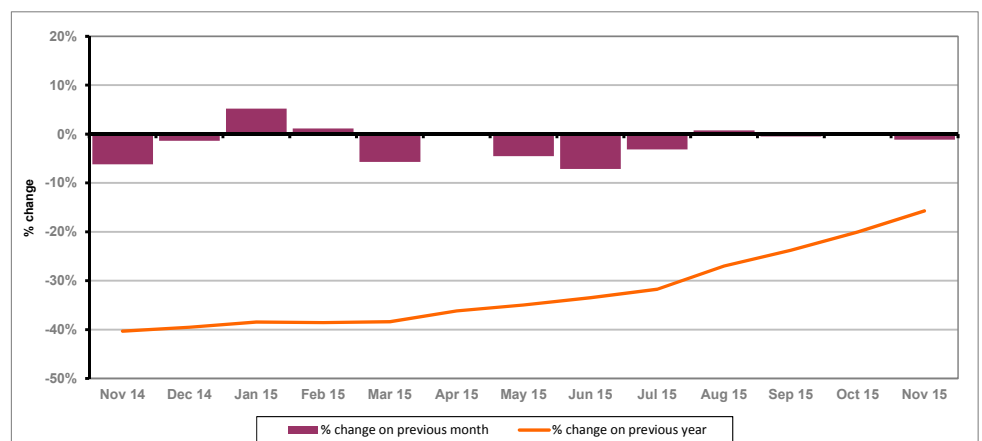
PART 1: SUMMARY

The claimant rate in Gloucestershire was 1.0% in November 2015. This was a 0.1% decrease on the October 2015 figure. The UK and the South West rate remained the same as the previous month at 1.8% and 1.1% respectively. Gloucestershire's rate was 0.1% lower than the South West average of 1.1%, and 0.8% lower than the UK average of 1.8%.

The claimant count in Gloucestershire in November 2015 decreased by 45 people. The amount of people claiming in November 2015 was 1.1% lower than the number in October 2015. This compares to a 0.6% increase in the South West and a 1.2% decrease for the UK.

The year on year claimant count in Gloucestershire has increased since last month. The count was 15.7% lower in November 2015 than at the same point in the previous year as shown in the graph below.

Gloucestershire claimants - Month on Month and Year on Year change: November 2014 to November 2015



Source: ONS Crown Copyright Reserved

Produced by:

Strategic Needs Analysis Team
Strategy and Challenge
Gloucestershire County Council
December 2015

DISTRICTS AT A GLANCE

At a glance unemployment information grouped by district. Includes:

Claim count: Total number of people claiming Job Seekers Allowance and Universal Credit who are not in work in November 2015

Compared to last month: How much larger/smaller November's claimant count is compared to October, expressed as a %

Claimant rate: The % of working age population claiming Job Seekers Allowance and Universal Credit who are not in work in November 2015

Highest claiming ward: The ward with the highest claim count in that district and the rate

CHELTEMHAM BOROUGH

Claim count:	775
Compared to last month:	2.6%
Claimant rate:	1.0%
Highest claiming ward	Hesters Way (2.2%)

GLOUCESTER CITY

Claim count:	1,265
Compared to last month:	-4.5%
Claimant rate:	1.6%
Highest claiming ward	Westgate (3.5%)

COTSWOLD DISTRICT

Claim count:	320
Compared to last month:	-7.2%
Claimant rate:	0.6%
Highest claiming ward	Cirencester Watermoor (1.6%)

STROUD DISTRICT

Claim count:	495
Compared to last month:	0.0%
Claimant rate:	0.7%
Highest claiming ward	Slade (1.9%)

FOREST OF DEAN

Claim count:	600
Compared to last month:	6.2%
Claimant rate:	1.2%
Highest claiming ward	Cinderford East (2.4%) and Lydney East (2.4%)

TEWKESBURY BOROUGH

Claim count:	485
Compared to last month:	-4.0%
Claimant rate:	0.9%
Highest claiming ward	Tewkesbury Prior's Park (2.7%)

PART 2: UK, SW AND GLOUCESTERSHIRE INDICATORS

The unemployment situation in Gloucestershire compared to the South West and the UK.

Claimant Rate

Figure 1: Claimant Rate for Gloucestershire, the South West and UK over the past year

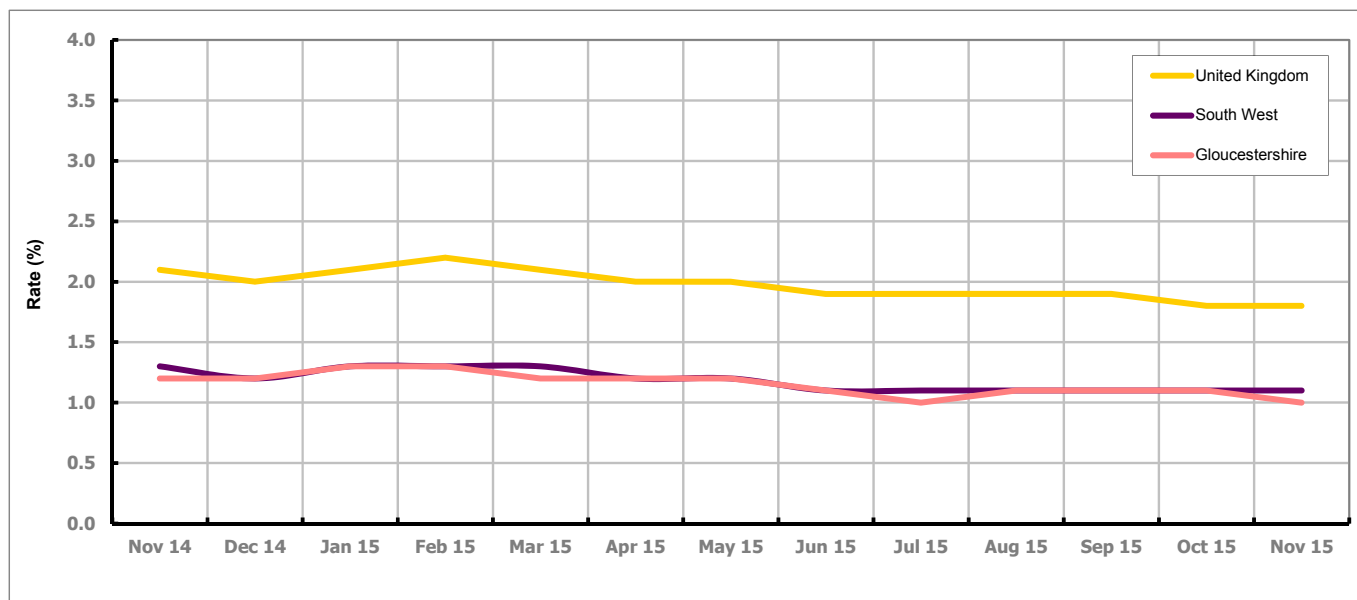


Figure 1 shows the claimant rate for Gloucestershire at 1.0% in November 2015. The Gloucestershire rate has been the same as the South West average since December 2014, with the exception of March, July and November 2015 when it was lower. It has been persistently lower by approximately 0.8% against the UK average.

Claimant Count

Table 1: Analysis of UK, South West and Gloucestershire Claimant Counts

Area	Claimant Count in November 2015	% change on October 2015	Average % change over the last six months	Consecutive months decreasing
UK	746,480	-1.2%	-0.8%	3
South West	36,975	0.6%	0.1%	0
Gloucestershire	3,945	-1.1%	-0.6%	0

Table 1 shows that in November 2015, the number of claimants in Gloucestershire was 1.1% lower than the number in October 2015.

The average change in claimants in Gloucestershire for the six months to November 2015 was -0.6%.

PART 3: LOCAL AUTHORITY DISTRICT ANALYSIS

Claimant Rate and Claimant Count

Figure 2: Claimant Rate (%) across Gloucestershire - November 2015

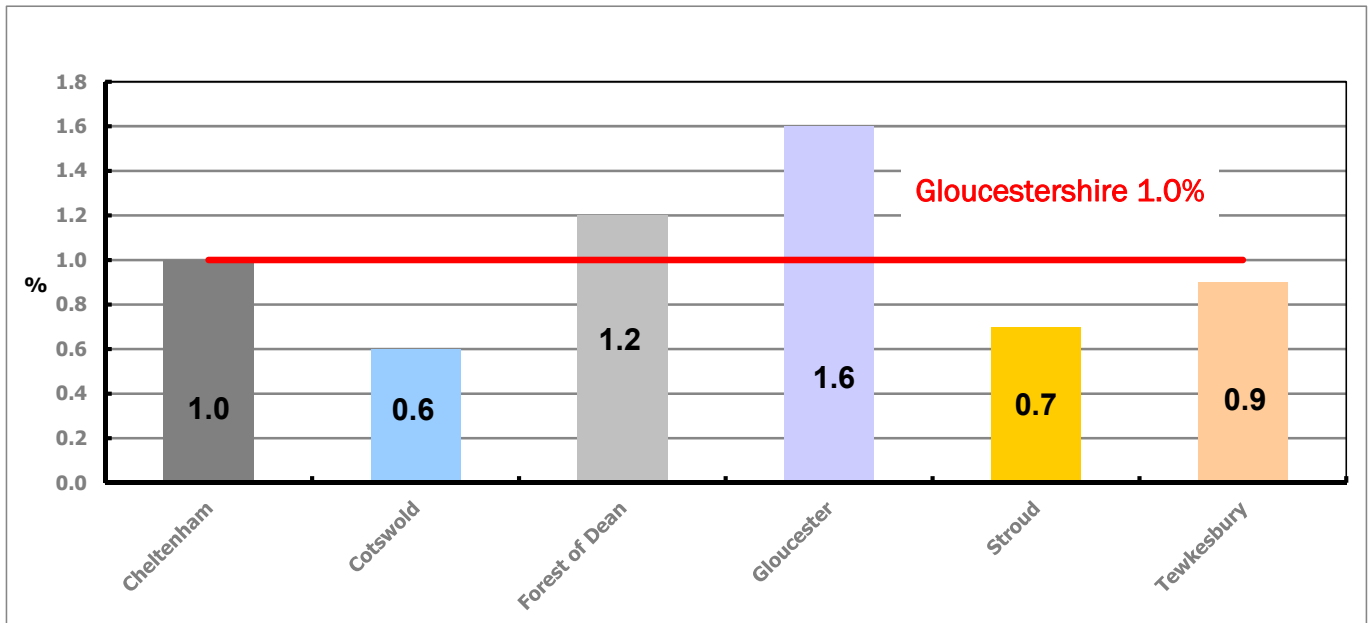


Figure 2 shows the claimant rate for November 2015 in Gloucestershire. Between October and November 2015, the rate in Cotswold and Tewkesbury decreased, while the rate in the Forest of Dean increased. The rate in Cheltenham, Gloucester and Stroud stayed the same.

Figure 3: Total claimants over the past year across Gloucestershire Districts

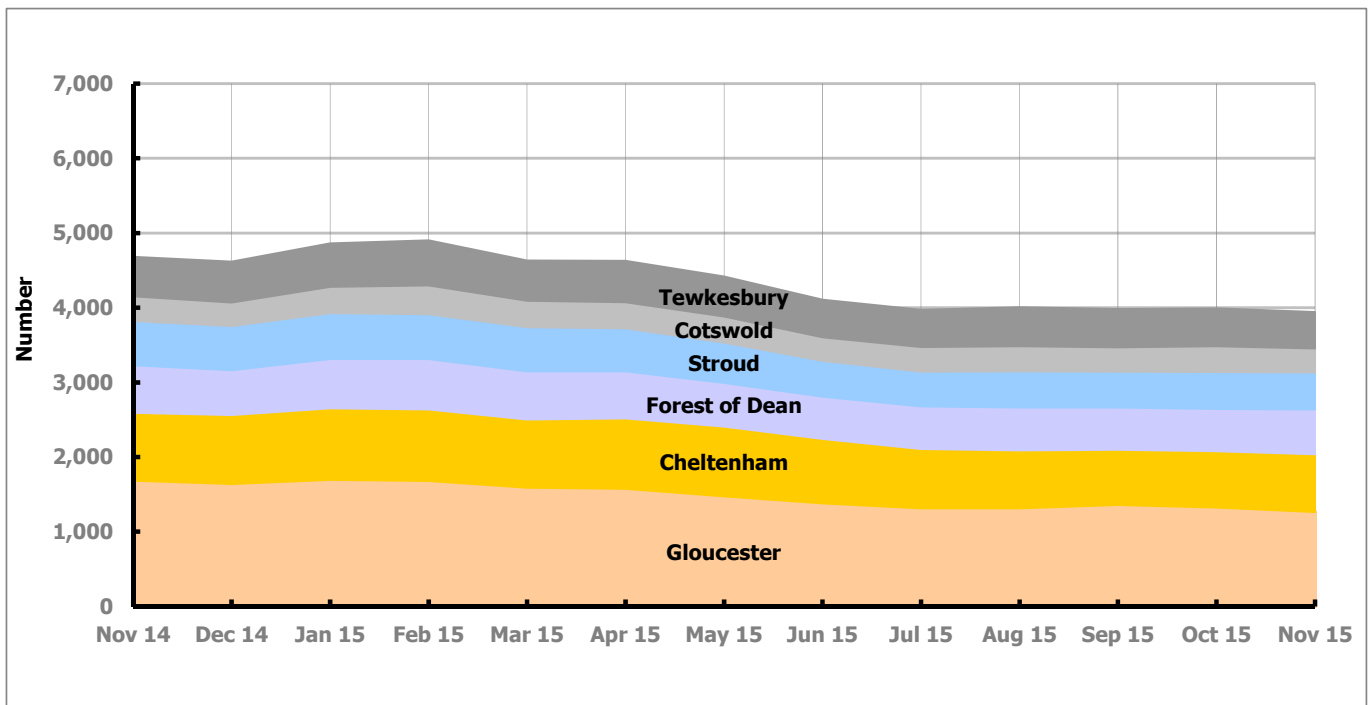


Figure 3 shows the overall claimant count by district over the past year. The number of claimants has decreased over the last year, with the exception of January, February, August and October 2015 when there was an increase.

Table 2: Analysis of Gloucestershire and District Claimant Counts

Total	Nov 15 Number	Nov 15 Rate	Oct 15 Number	Oct 15 Rate	Monthly change	% monthly change	Monthly change of rate
Gloucestershire	3,945	1.0	3,990	1.1	-45	-1.1%	-0.1
Cheltenham	775	1.0	755	1.0	20	2.6%	0.0
Cotswold	320	0.6	345	0.7	-25	-7.2%	-0.1
Forest of Dean	600	1.2	565	1.1	35	6.2%	0.1
Gloucester	1,265	1.6	1,325	1.6	-60	-4.5%	0.0
Stroud	495	0.7	495	0.7	0	0.0%	0.0
Tewkesbury	485	0.9	505	1.0	-20	-4.0%	-0.1

Table 2 shows the change in the claimant count in November 2015 compared to October 2015. Cheltenham and Forest of Dean saw an increase in the number of claimants, while Cotswold, Gloucester and Tewkesbury saw a decrease. Stroud remained the same.

Table 3: Analysis of Male Gloucestershire and District Claimant Counts

Male	Nov 15 Number	Nov 15 Rate	Oct 15 Number	Oct 15 Rate	Monthly change	% monthly change	Monthly change of rate
Gloucestershire	2,610	1.4	2,605	1.4	5	0.2%	0.0
Cheltenham	515	1.4	480	1.3	35	7.3%	0.1
Cotswold	205	0.8	220	0.9	-15	-6.8%	-0.1
Forest of Dean	405	1.6	390	1.5	15	3.8%	0.1
Gloucester	840	2.1	885	2.2	-45	-5.1%	-0.1
Stroud	330	0.9	315	0.9	15	4.8%	0.0
Tewkesbury	315	1.2	320	1.2	-5	-1.6%	0.0

Table 3 shows the change in the male claimant count in November 2015 compared to October 2015. Cheltenham, Forest of Dean and Stroud saw an increase in the number of male claimants, while all other districts saw a decrease.

Table 4: Analysis of Female Gloucestershire and District Claimant Counts

Female	Nov 15 Number	Nov 15 Rate	Oct 15 Number	Oct 15 Rate	Monthly change	% monthly change	Monthly change of rate
Gloucestershire	1,330	0.7	1,385	0.7	-55	-4.0%	0.0
Cheltenham	260	0.7	275	0.7	-15	-5.5%	0.0
Cotswold	115	0.4	130	0.5	-15	-11.5%	-0.1
Forest of Dean	190	0.8	175	0.7	15	8.6%	0.1
Gloucester	430	1.1	440	1.1	-10	-2.3%	0.0
Stroud	165	0.5	180	0.5	-15	-8.3%	0.0
Tewkesbury	170	0.7	185	0.7	-15	-8.1%	0.0

Table 4 shows the change in the female claimant count in November 2015 compared to October 2015. Forest of Dean saw an increase in the number of female claimants, while all other districts saw a decrease.

PART 4: LOCAL AUTHORITY DISTRICT AND WARD ANALYSIS

This section covers the six districts and a comparison of their constituent wards.

4.1 Cheltenham Borough

Claimant Rate and Claimant Count

Figure 4: Cheltenham Borough claimant rate over the last year

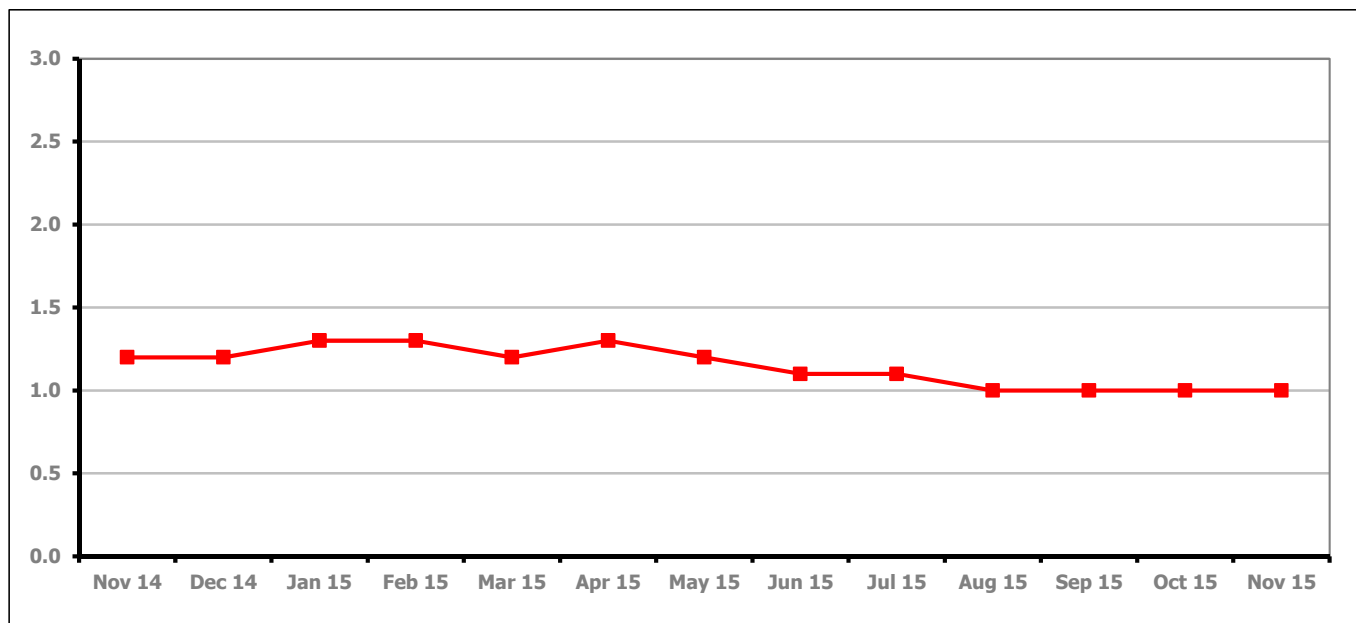


Figure 4 shows the claimant rate in Cheltenham remained the same as last month at 1.0%.

Figure 5: Cheltenham Borough claimants - Month on Month and Year on Year change

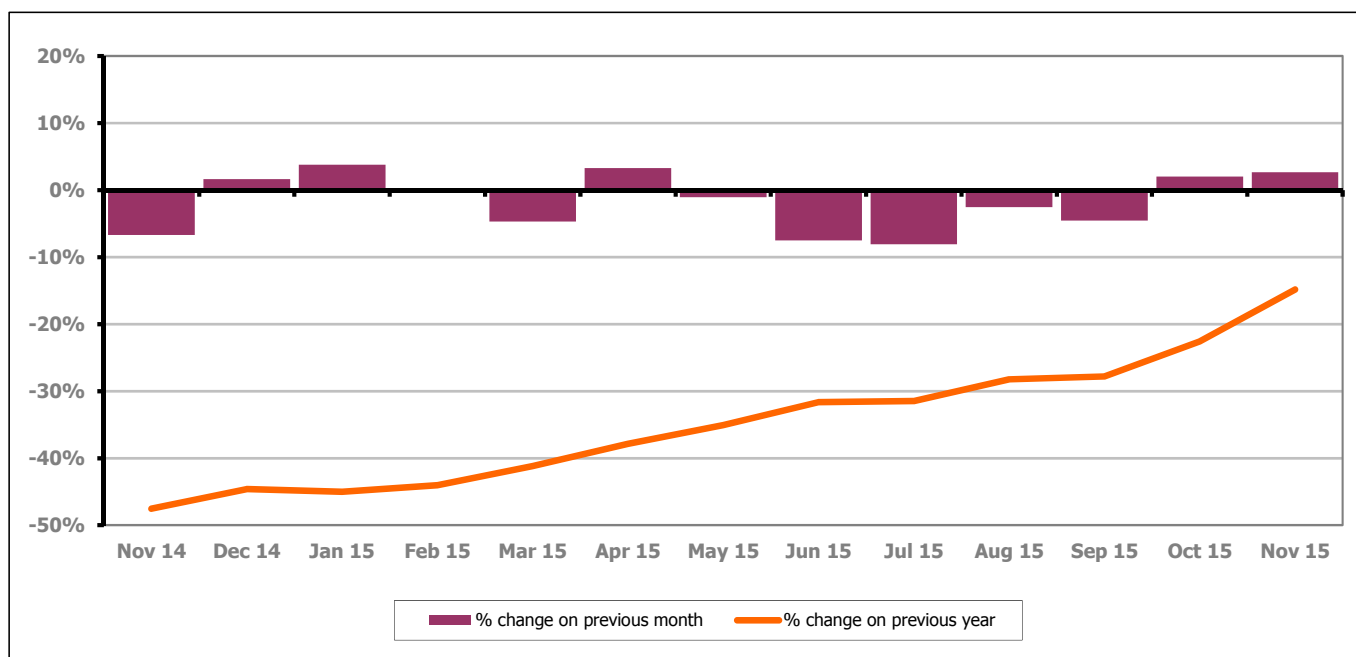


Figure 5 shows the claimant count increased by 2.6% since last month. The change on the previous year has increased between October and November 2015 to -14.8%.

PART 4: LOCAL AUTHORITY DISTRICT AND WARD ANALYSIS

4.1 Cheltenham Borough continued...

Figure 6: Claimant rates across Cheltenham Borough wards - November 2015

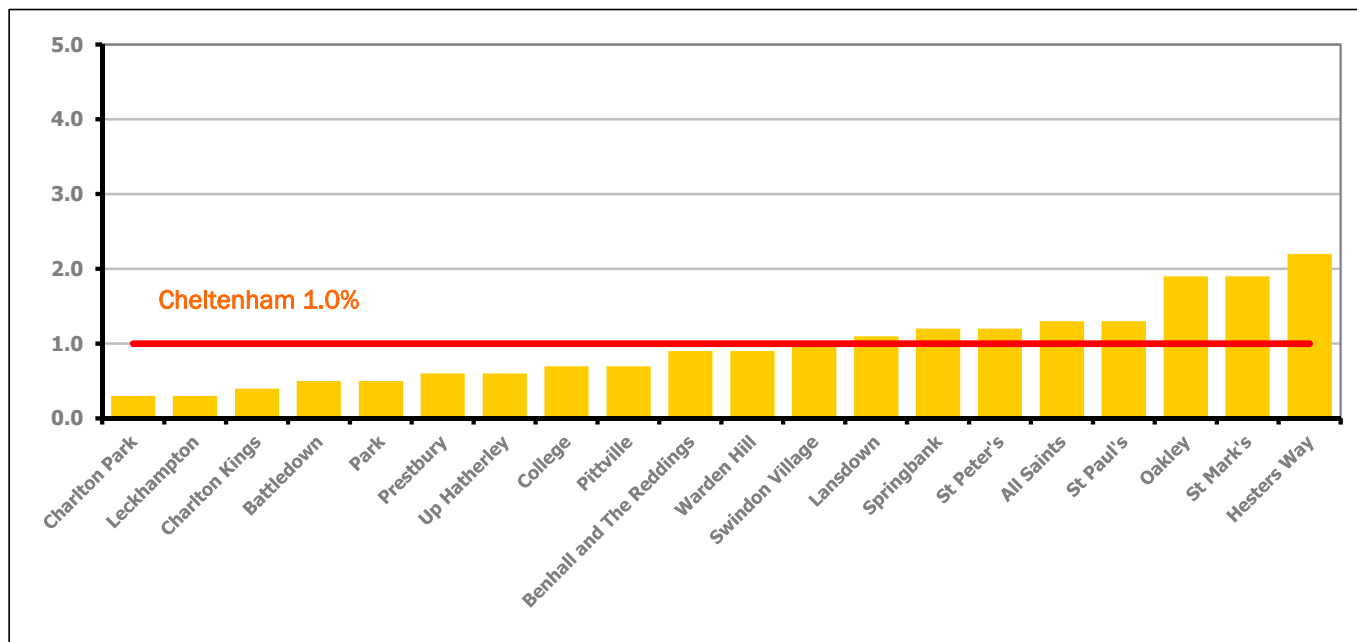


Figure 6 shows the claimant rates for Cheltenham Borough wards. The red line represents the average claimant rate across the Borough of 1.0%. Eight wards lie above the average.

Table 5: Analysis of Claimant Count at Cheltenham Borough ward level - November 2015

District	Ward	Rate	Rank*
Cheltenham	Charlton Park	0.3	11
Cheltenham	Leckhampton	0.3	11
Cheltenham	Charlton Kings	0.4	17
Cheltenham	Battledown	0.5	31
Cheltenham	Park	0.5	31
Cheltenham	Prestbury	0.6	47
Cheltenham	Up Hatherley	0.6	47
Cheltenham	College	0.7	59
Cheltenham	Pittville	0.7	59
Cheltenham	Benhall and The Reddings	0.9	83
Cheltenham	Warden Hill	0.9	83
Cheltenham	Swindon Village	1.0	96
Cheltenham	Lansdown	1.1	104
Cheltenham	Springbank	1.2	110
Cheltenham	St Peter's	1.2	110
Cheltenham	All Saints	1.3	116
Cheltenham	St Paul's	1.3	116
Cheltenham	Oakley	1.9	130
Cheltenham	St Mark's	1.9	130
Cheltenham	Hesters Way	2.2	134

	lowest 10% of county
	first quartile of county
	second quartile of county
	third quartile of county
	fourth quartile of county
	highest 10% of county

* 1 = "best" and 142 = "worst"

Table 5 shows overall claimant rates for Cheltenham Borough wards and their position relative to all wards in Gloucestershire.

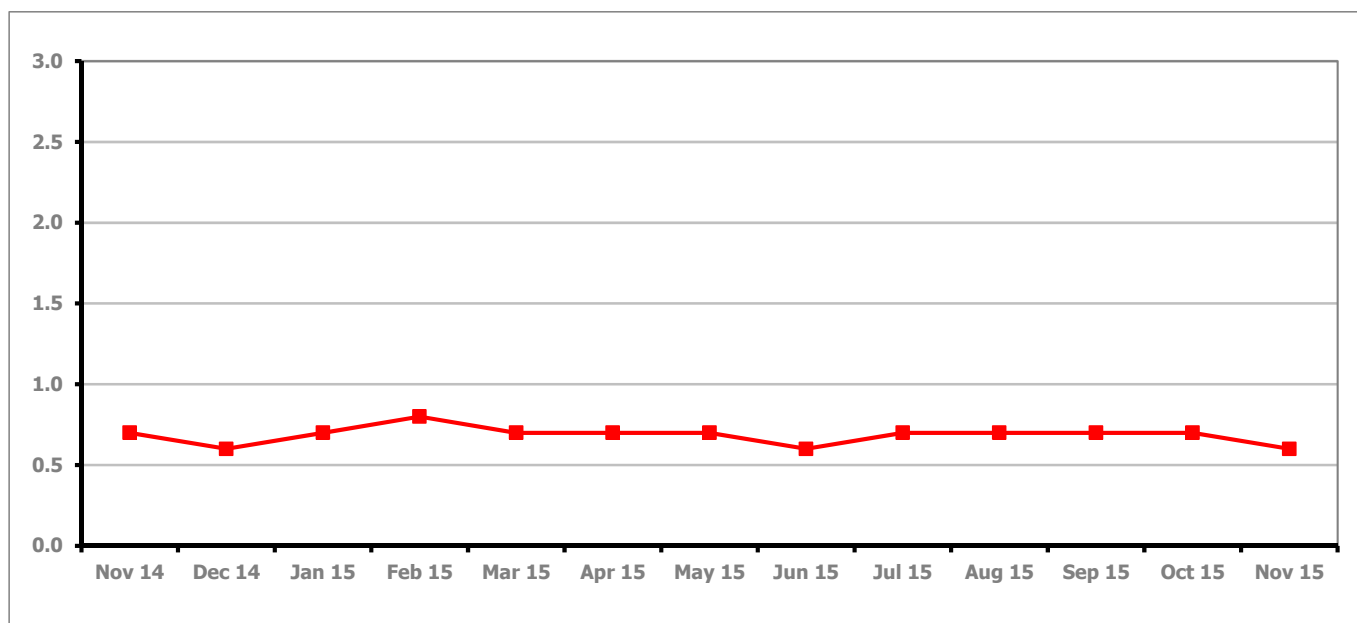
PART 4: LOCAL AUTHORITY DISTRICT AND WARD ANALYSIS**4.2 Cotswold District****Claimant Rate and Claimant Count***Figure 7: Cotswold District claimant rate over the last year*

Figure 7 shows the claimant rate in Cotswold District decreased in November 2015 to 0.6%.

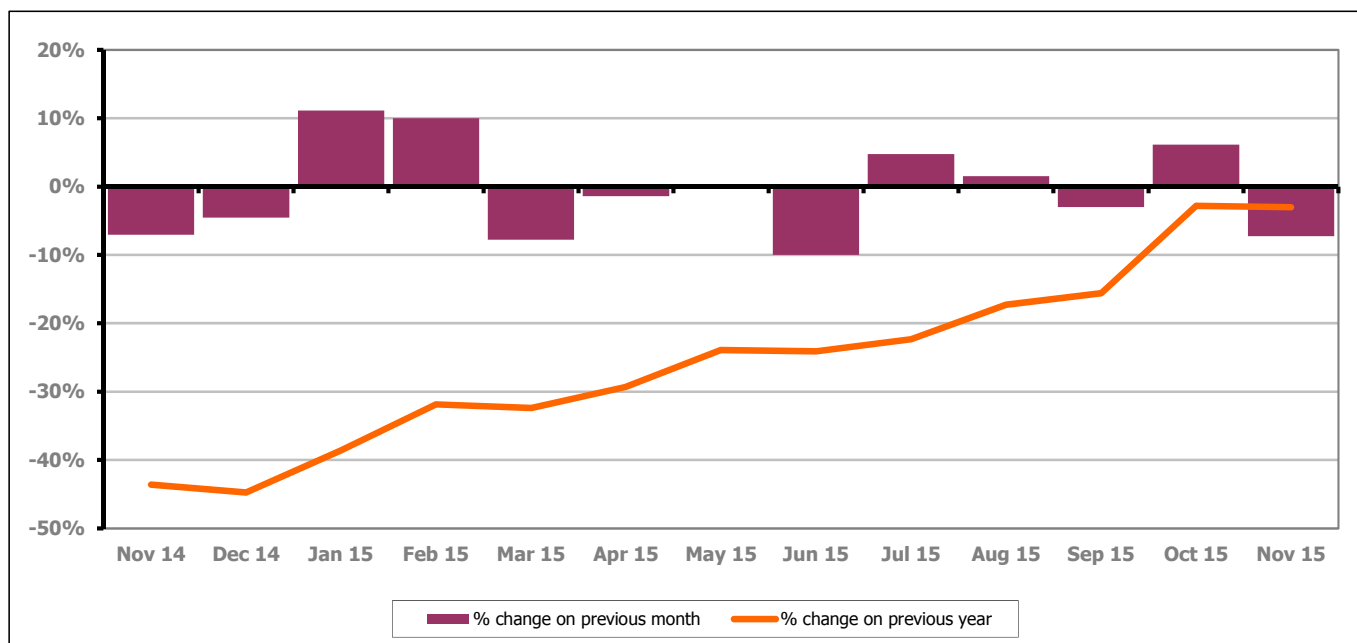
Figure 8: Cotswold District claimants - Month on Month and Year on Year change

Figure 8 shows the claimant count decreased by 7.2% since last month. The change on the previous year has decreased between October and November 2015 to -3.0%.

PART 4: LOCAL AUTHORITY DISTRICT AND WARD ANALYSIS

4.2 Cotswold District continued...

Figure 9: Claimant rates across Cotswold District wards - November 2015

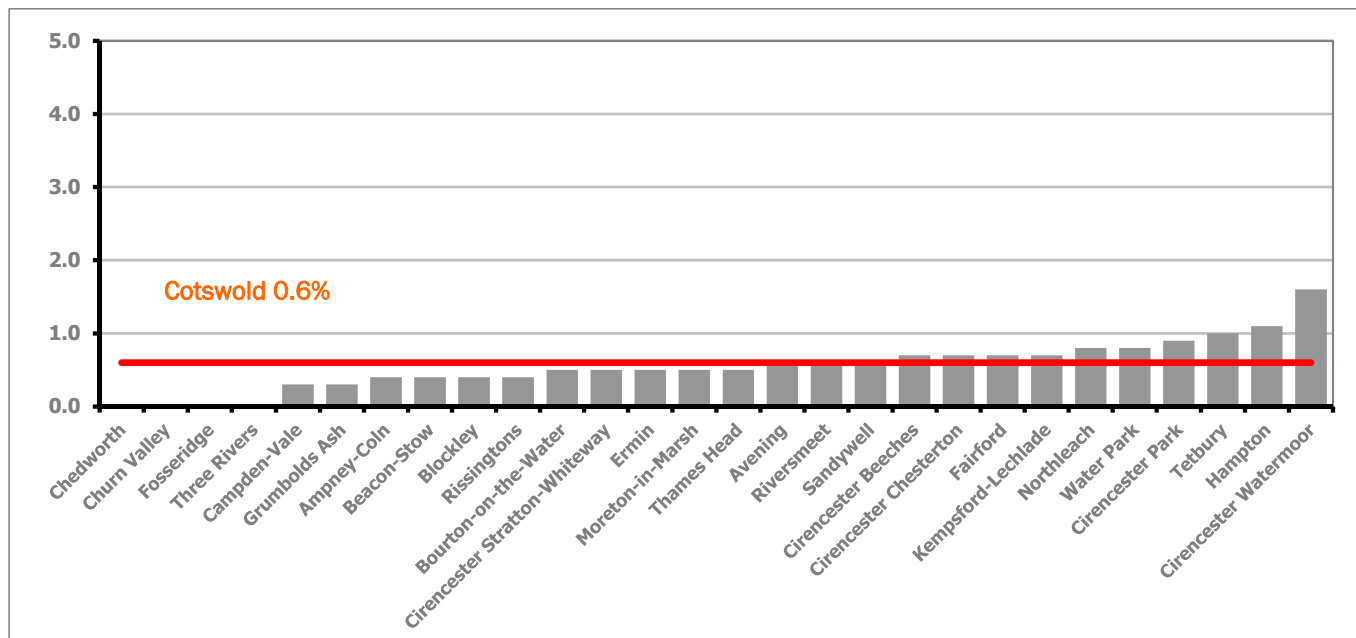
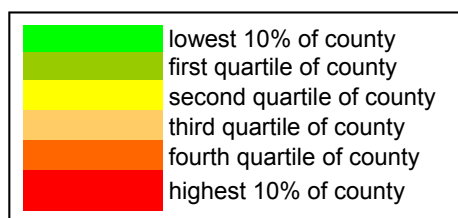


Figure 9 shows the claimant rates for Cotswold District wards. The red line represents the average claimant rate across the District of 0.6%. Ten wards lie above the average.

Table 6: Analysis of Claimant Count at Cotswold District ward level - November 2015

District	Ward	Rate	Rank*
Cotswolds	Chedworth	<0.2	1
Cotswolds	Churn Valley	<0.2	1
Cotswolds	Fosseridge	<0.2	1
Cotswolds	Three Rivers	<0.2	1
Cotswolds	Campden-Vale	0.3	11
Cotswolds	Grumbolds Ash	0.3	11
Cotswolds	Ampney-Coln	0.4	17
Cotswolds	Beacon-Stow	0.4	17
Cotswolds	Blockley	0.4	17
Cotswolds	Rissingtons	0.4	17
Cotswolds	Bourton-on-the-Water	0.5	31
Cotswolds	Cirencester Stratton-Whiteway	0.5	31
Cotswolds	Ermin	0.5	31
Cotswolds	Moreton-in-Marsh	0.5	31
Cotswolds	Thames Head	0.5	31
Cotswolds	Avening	0.6	47
Cotswolds	Riversmeet	0.6	47
Cotswolds	Sandywell	0.6	47
Cotswolds	Cirencester Beeches	0.7	59
Cotswolds	Cirencester Chesterton	0.7	59
Cotswolds	Fairford	0.7	59
Cotswolds	Kempsford-Lechlade	0.7	59
Cotswolds	Northleach	0.8	78
Cotswolds	Water Park	0.8	78
Cotswolds	Cirencester Park	0.9	83
Cotswolds	Tetbury	1.0	96
Cotswolds	Hampton	1.1	104
Cotswolds	Cirencester Watermoor	1.6	125



* 1 = "best" and 142 = "worst"

Table 6 shows overall claimant rates for Cotswold District wards and their position relative to all wards in Gloucestershire.

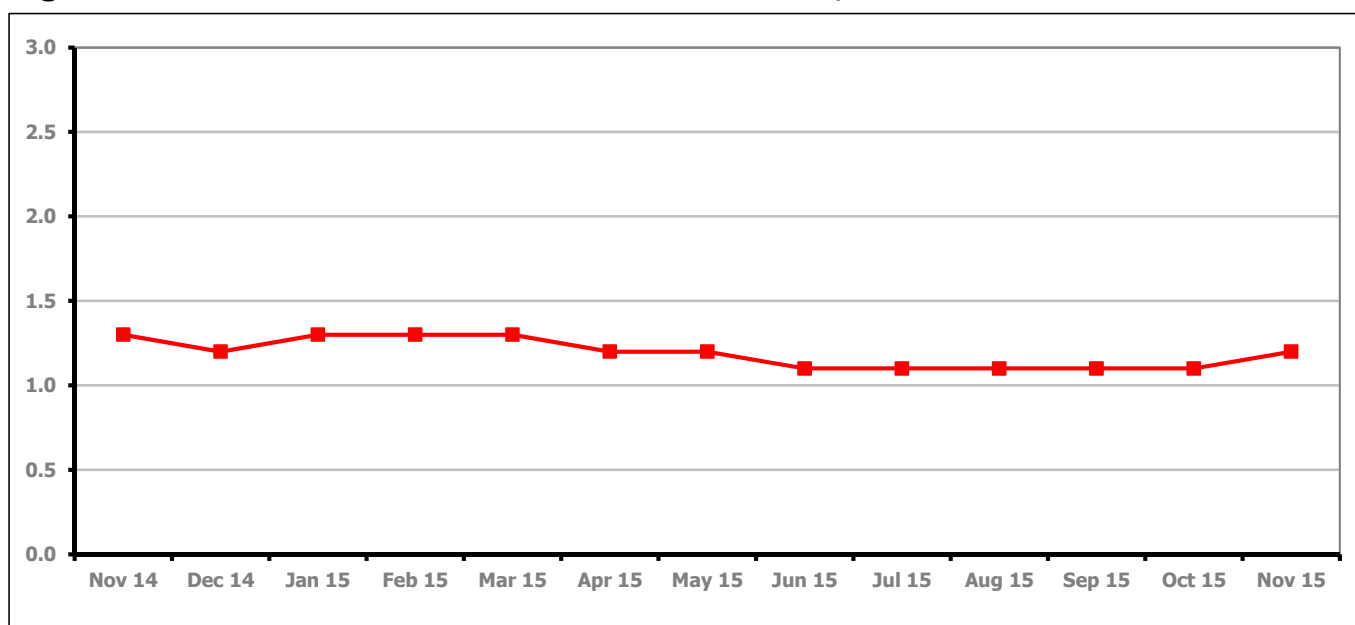
PART 4: LOCAL AUTHORITY DISTRICT AND WARD ANALYSIS**4.3 Forest of Dean District****Claimant Rate and Claimant Count***Figure 10: Forest of Dean District claimant rate over the last year*

Figure 10 shows the claimant rate in the Forest of Dean increased in November 2015 to 1.2%.

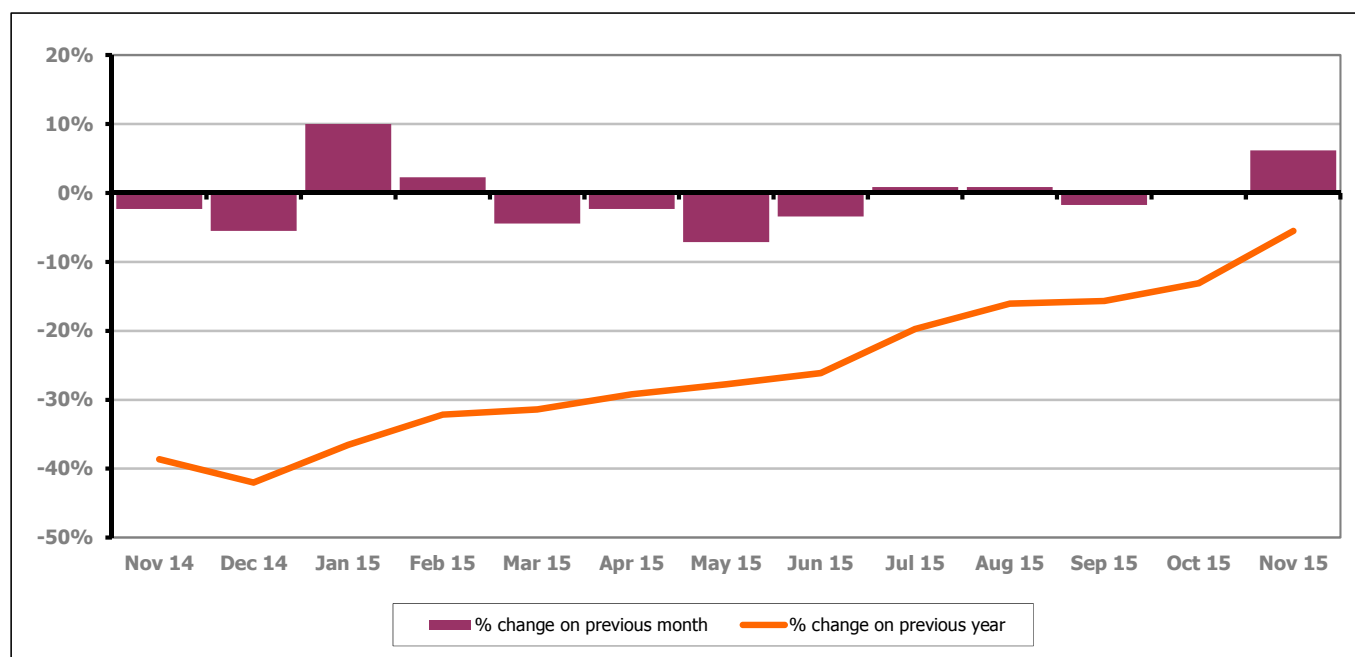
Figure 11: Forest of Dean District claimants - Month on Month and Year on Year change

Figure 11 shows the claimant count increased by 6.2% since October 2015. The change on the previous year has increased between October and November 2015 to -5.5%.

PART 4: LOCAL AUTHORITY DISTRICT AND WARD ANALYSIS

4.3 Forest of Dean District continued...

Figure 12: Claimant rates across Forest of Dean District wards - November 2015

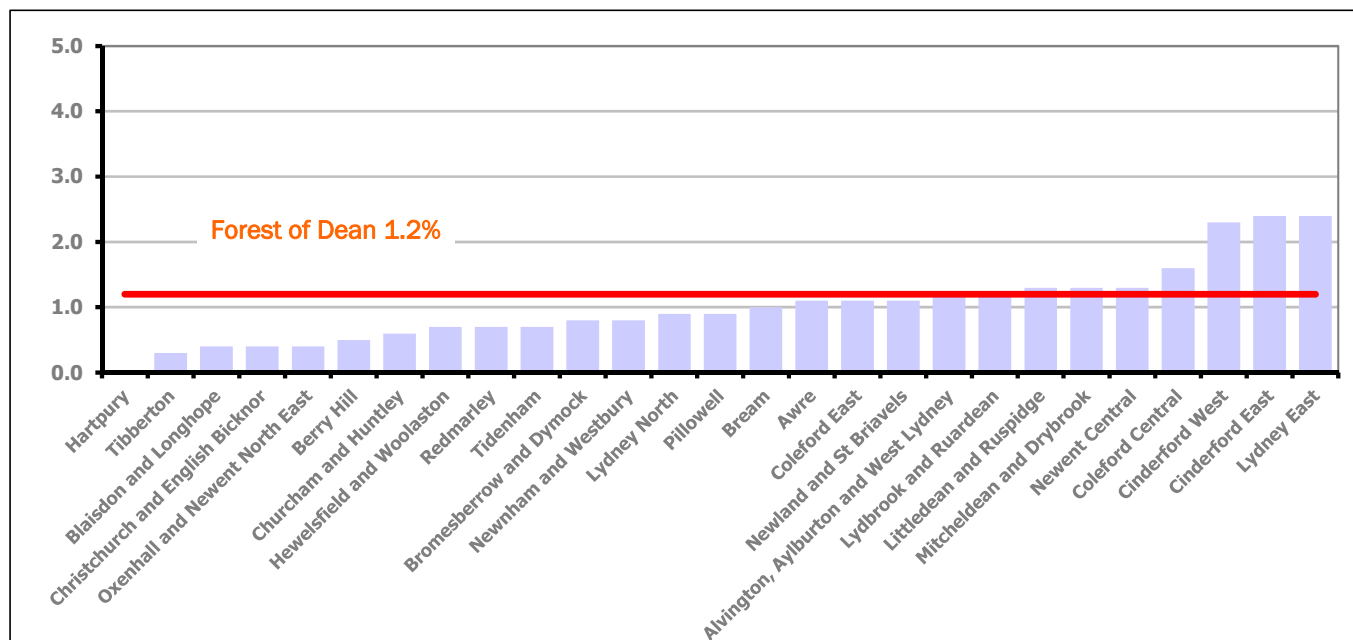
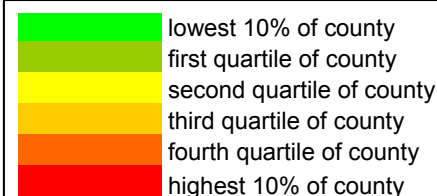


Figure 12 shows the claimant rates for Forest of Dean District wards. The red line represents the average claimant rate across the District of 1.2%. Seven wards lie above the average.

Table 7: Analysis of Claimant Count at Forest of Dean District ward level - November 2015

District	Ward	Rate	Rank*
Forest	Hartpury	<0.2	1
Forest	Tibberton	0.3	11
Forest	Blaisdon and Longhope	0.4	17
Forest	Christchurch and English Bicknor	0.4	17
Forest	Oxenhall and Newent North East	0.4	17
Forest	Berry Hill	0.5	31
Forest	Churcham and Huntley	0.6	47
Forest	Hewelsfield and Woolaston	0.7	59
Forest	Redmarley	0.7	59
Forest	Tidenham	0.7	59
Forest	Bromesberrow and Dymock	0.8	78
Forest	Newnham and Westbury	0.8	78
Forest	Lydney North	0.9	83
Forest	Pillowell	0.9	83
Forest	Bream	1.0	96
Forest	Awre	1.1	104
Forest	Coleford East	1.1	104
Forest	Newland and St Briavels	1.1	104
Forest	Alvington, Aylburton and West Lydney	1.2	110
Forest	Lydbrook and Ruardean	1.2	110
Forest	Littledean and Ruspidge	1.3	116
Forest	Mitcheldean and Drybrook	1.3	116
Forest	Newent Central	1.3	116
Forest	Coleford Central	1.6	125
Forest	Cinderford West	2.3	135
Forest	Cinderford East	2.4	136
Forest	Lydney East	2.4	136



* 1 = "best" and 142 = "worst"

Table 7 shows overall claimant rates for the Forest of Dean District wards and their position relative to all wards in Gloucestershire.

PART 4: LOCAL AUTHORITY DISTRICT AND WARD ANALYSIS

4.4 Gloucester City

Claimant Rate and Claimant Count

Figure 13: Gloucester City claimant rate over the last year

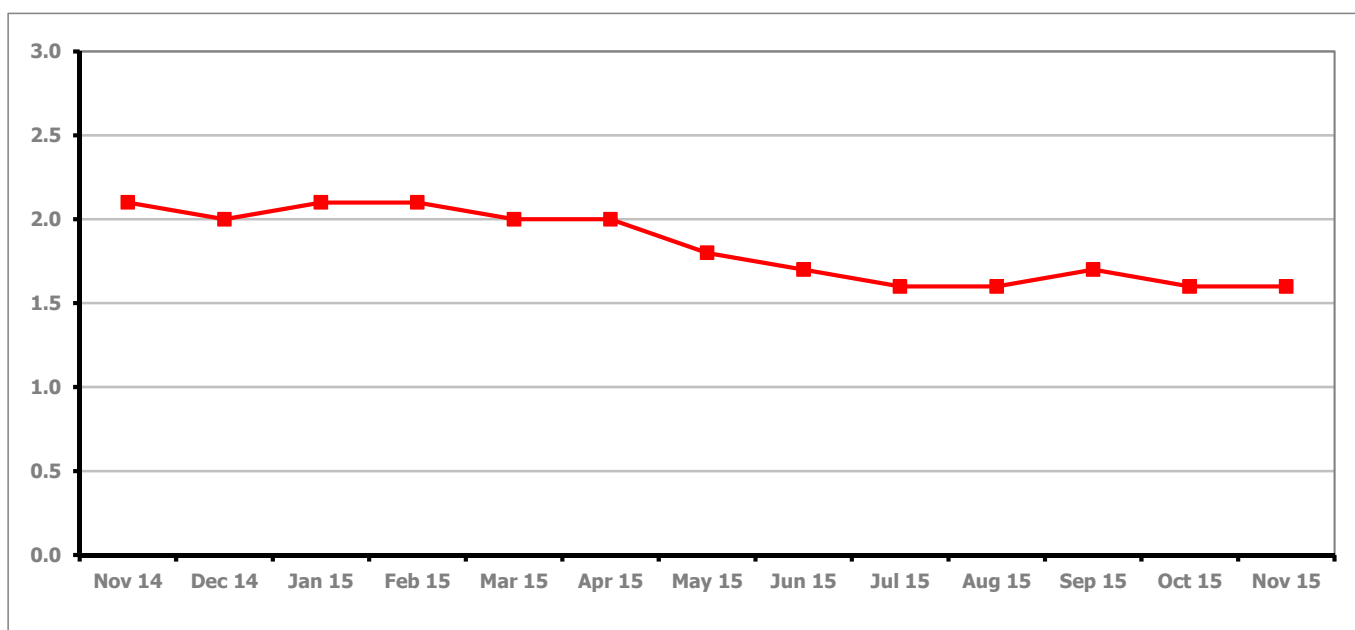


Figure 13 shows the claimant rate for Gloucester City remained the same as last month at 1.6%.

Figure 14: Gloucester City claimants - Month on Month and Year on Year change

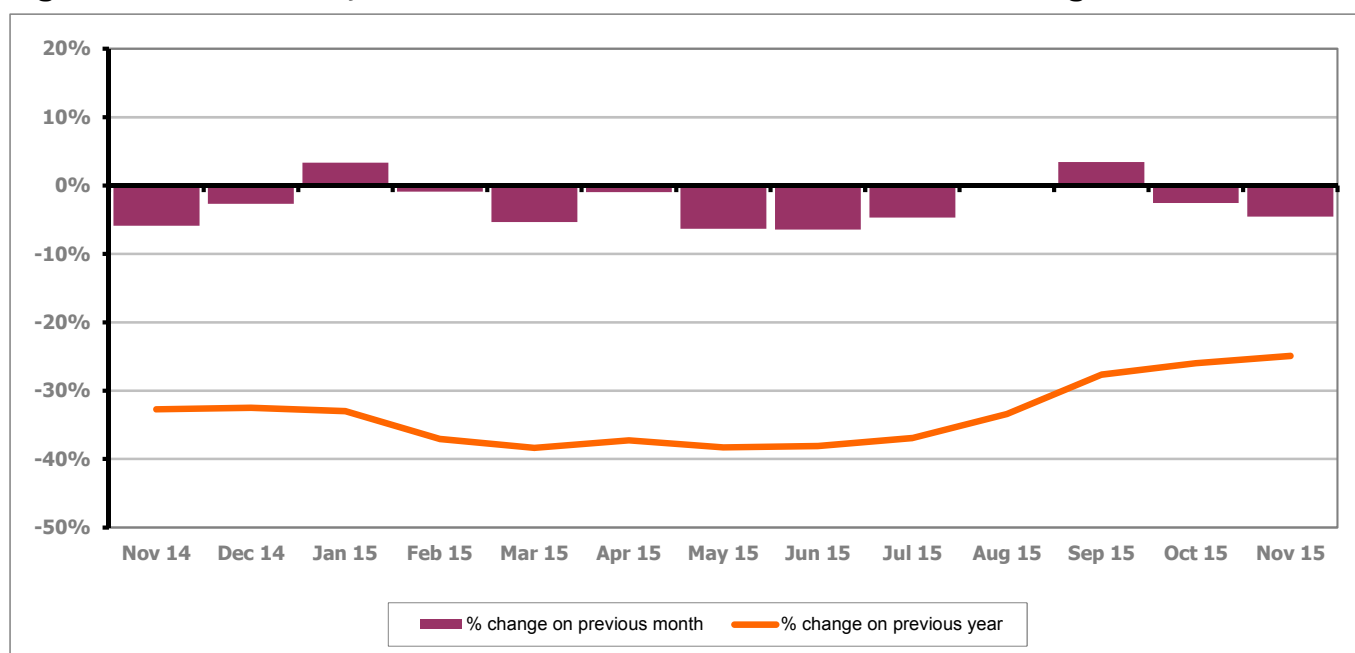


Figure 14 shows the monthly claimant count decreased by 4.5% since October 2015. The change on the previous year has increased between October and November 2015 to -24.9%.

PART 4: LOCAL AUTHORITY DISTRICT AND WARD ANALYSIS

4.4 Gloucester City continued...

Figure 15: Claimant rates across Gloucester City wards - November 2015

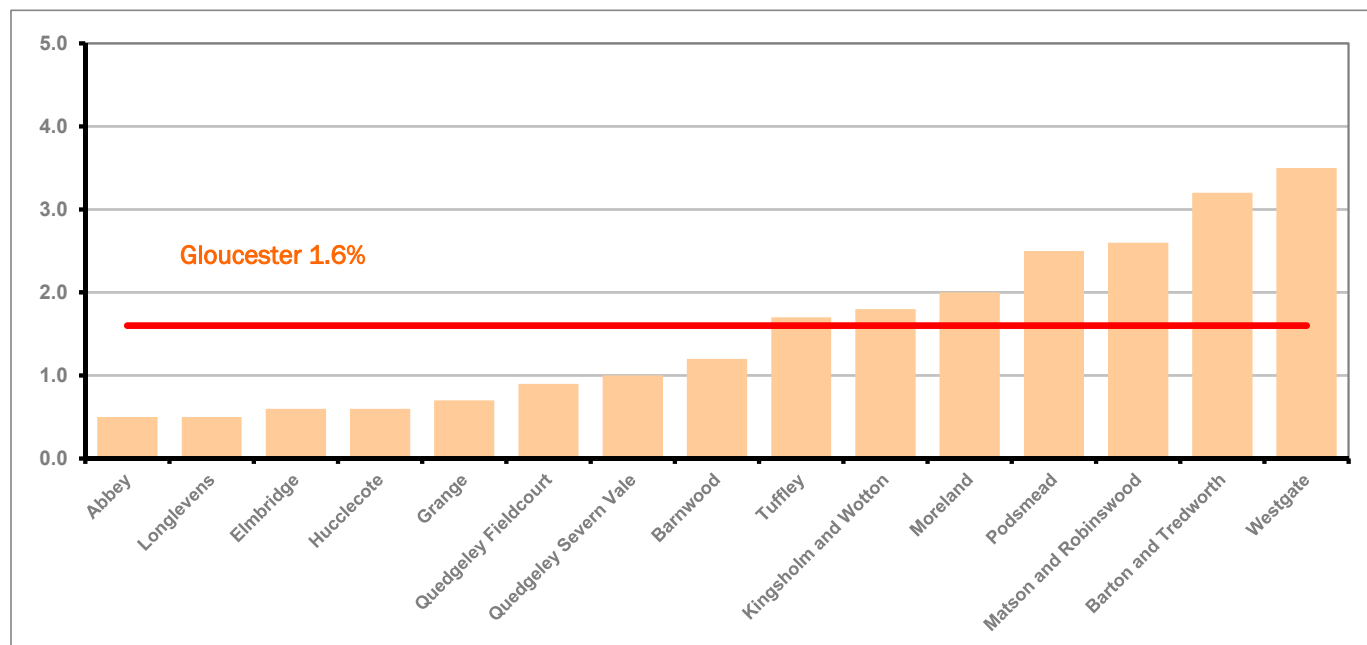
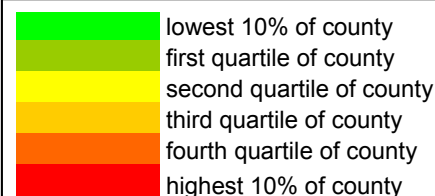


Figure 15 shows the claimant rates for Gloucester City district wards. The red line represents the average claimant rate across the City of 1.6%. Seven wards lie above the average.

Table 8: Analysis of Claimant Count at Gloucester City ward level - November 2015

District	Ward	Rate	Rank*
Gloucester	Abbey	0.5	31
Gloucester	Longlevens	0.5	31
Gloucester	Elmbridge	0.6	47
Gloucester	Hucclecote	0.6	47
Gloucester	Grange	0.7	59
Gloucester	Quedgeley Fieldcourt	0.9	83
Gloucester	Quedgeley Severn Vale	1.0	96
Gloucester	Barnwood	1.2	110
Gloucester	Tuffley	1.7	127
Gloucester	Kingsholm and Wotton	1.8	128
Gloucester	Moreland	2.0	133
Gloucester	Podsmead	2.5	138
Gloucester	Matson and Robinswood	2.6	139
Gloucester	Barton and Tredworth	3.2	141
Gloucester	Westgate	3.5	142



* 1 = "best" and 142 = "worst"

Table 8 shows overall claimant rates for Gloucester City wards and their position relative to all wards in Gloucestershire.

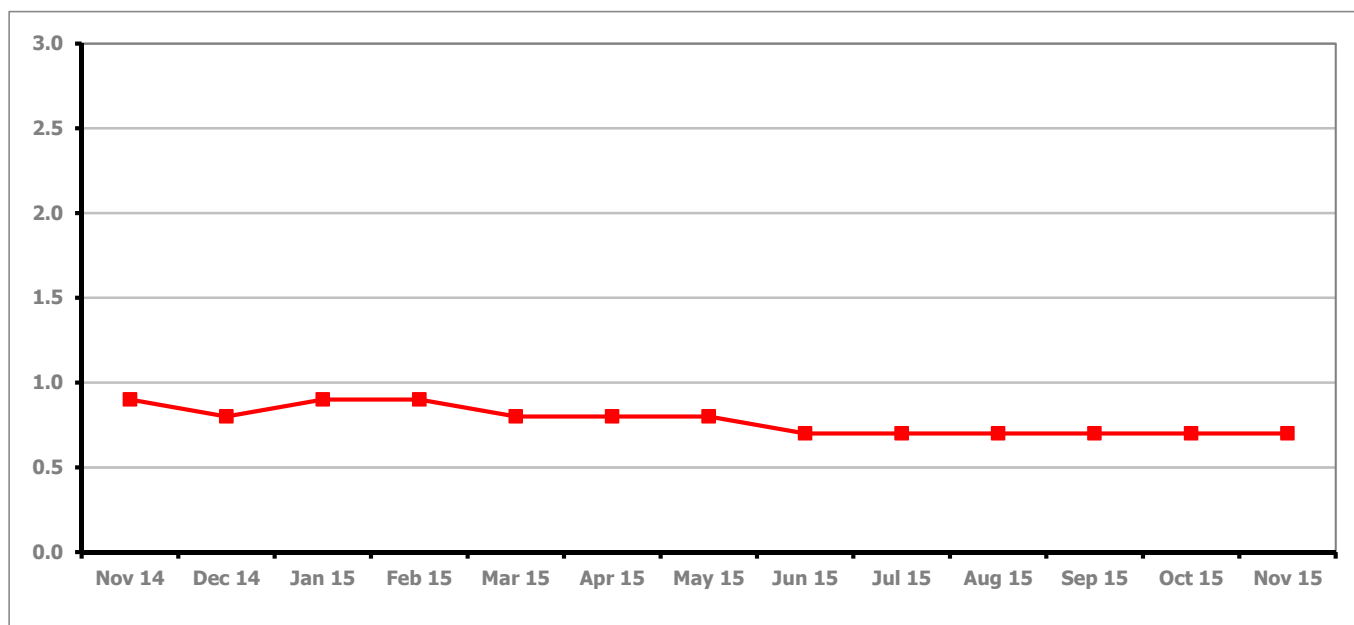
PART 4: LOCAL AUTHORITY DISTRICT AND WARD ANALYSIS**4.5 Stroud District****Claimant Rate and Claimant Count***Figure 16: Stroud District claimant rate over the last year*

Figure 16 shows the claimant rate for Stroud remained the same as last month at 0.7%.

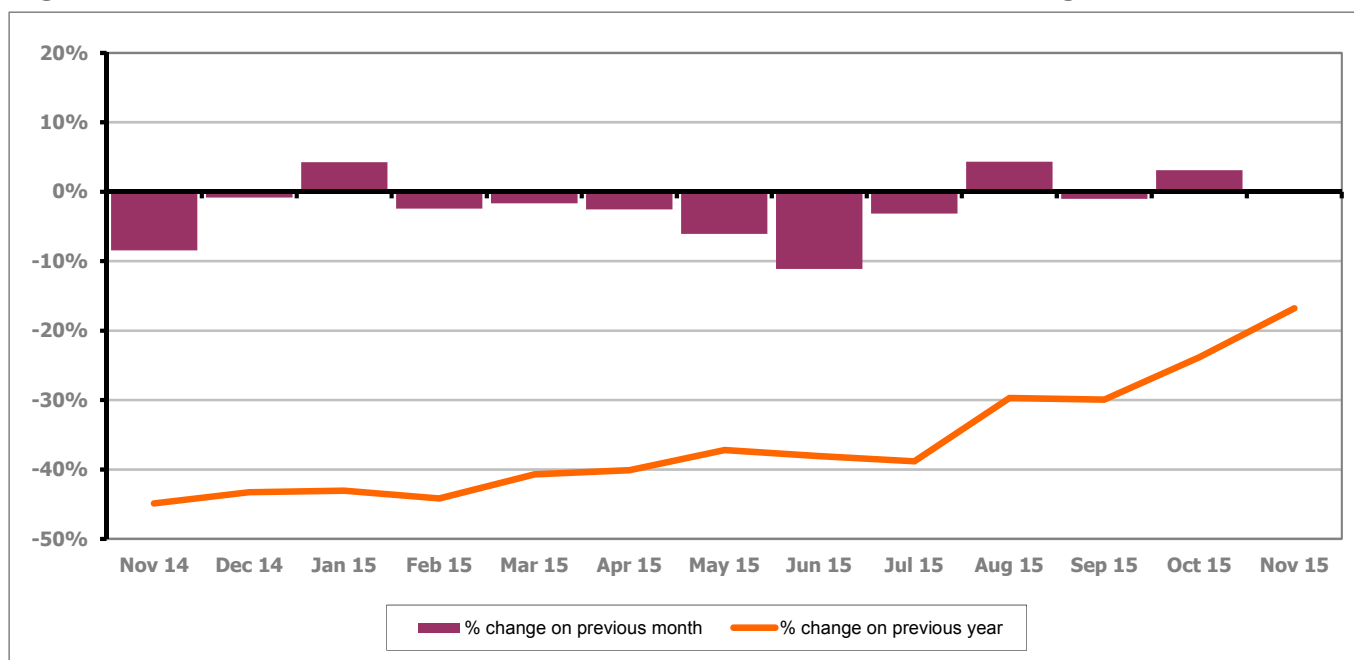
Figure 17: Stroud District claimants - Month on Month and Year on Year change

Figure 17 shows the monthly claimant count showed no change from last month. The change on the previous year has increased between October and November 2015 to -16.8%.

PART 4: LOCAL AUTHORITY AND DISTRICT ANALYSIS

4.5 Stroud District continued...

Figure 18: Claimant rates across Stroud District wards - November 2015

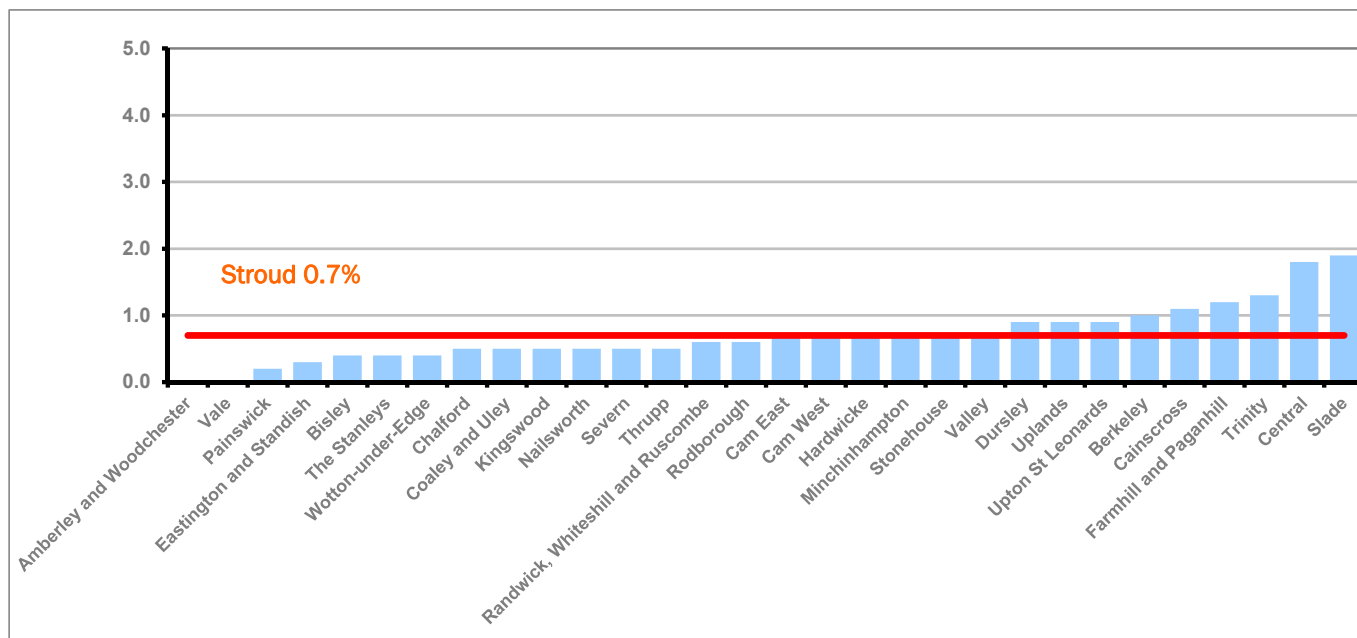
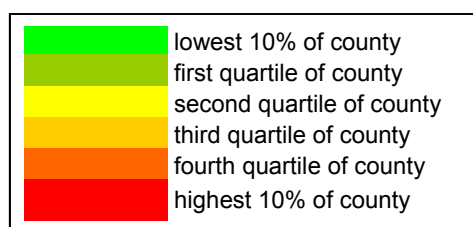


Figure 18 shows the claimant rates in Stroud District wards. The red line represents the average claimant rate across the District of 0.7%. Nine wards are above the average.

Table 9: Analysis of Claimant Count at Stroud District ward level - November 2015

District	Ward	Rate	Rank*
Stroud	Amberley and Woodchester	0.0	1
Stroud	Vale	<0.2	1
Stroud	Painswick	0.2	10
Stroud	Eastington and Standish	0.3	11
Stroud	Bisley	0.4	17
Stroud	The Stanleys	0.4	17
Stroud	Wotton-under-Edge	0.4	17
Stroud	Chalford	0.5	31
Stroud	Coaley and Uley	0.5	31
Stroud	Kingswood	0.5	31
Stroud	Nailsworth	0.5	31
Stroud	Severn	0.5	31
Stroud	Thrupp	0.5	31
Stroud	Randwick, Whiteshill and Ruscombe	0.6	47
Stroud	Rodborough	0.6	47
Stroud	Cam East	0.7	59
Stroud	Cam West	0.7	59
Stroud	Hardwicke	0.7	59
Stroud	Minchinhampton	0.7	59
Stroud	Stonehouse	0.7	59
Stroud	Valley	0.7	59
Stroud	Dursley	0.9	83
Stroud	Uplands	0.9	83
Stroud	Upton St Leonards	0.9	83
Stroud	Berkeley	1.0	96
Stroud	Cainscross	1.1	104
Stroud	Farmhill and Paganhill	1.2	110
Stroud	Trinity	1.3	116
Stroud	Central	1.8	128
Stroud	Slade	1.9	130



* 1 = "best" and 142 = "worst"

Table 9 shows overall claimant rates for Stroud District wards and their position relative to all wards in Gloucestershire.

PART 4: LOCAL AUTHORITY DISTRICT AND WARD ANALYSIS

4.6 Tewkesbury District

Claimant Rate and Claimant Count

Figure 19: Tewkesbury District claimant rate over the last year

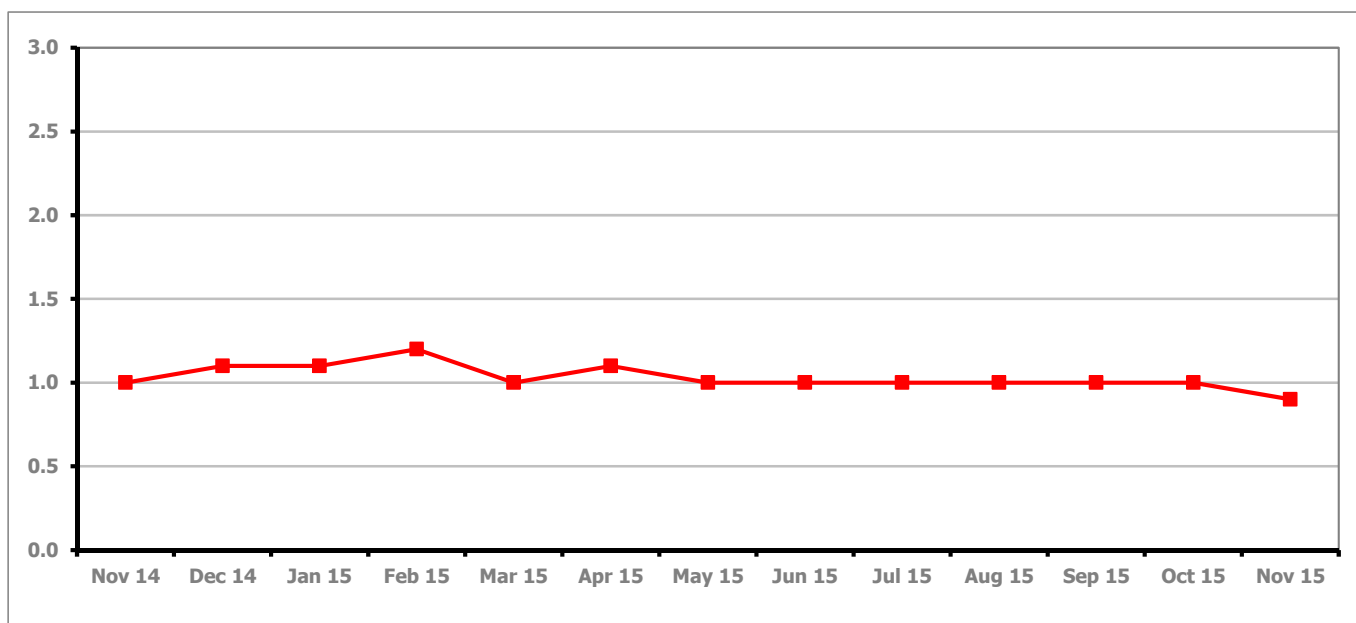


Figure 19 shows the claimant rate for Tewkesbury District decreased in November 2015 to 0.9%.

Figure 20: Tewkesbury District claimants - Month on Month and Year on Year change

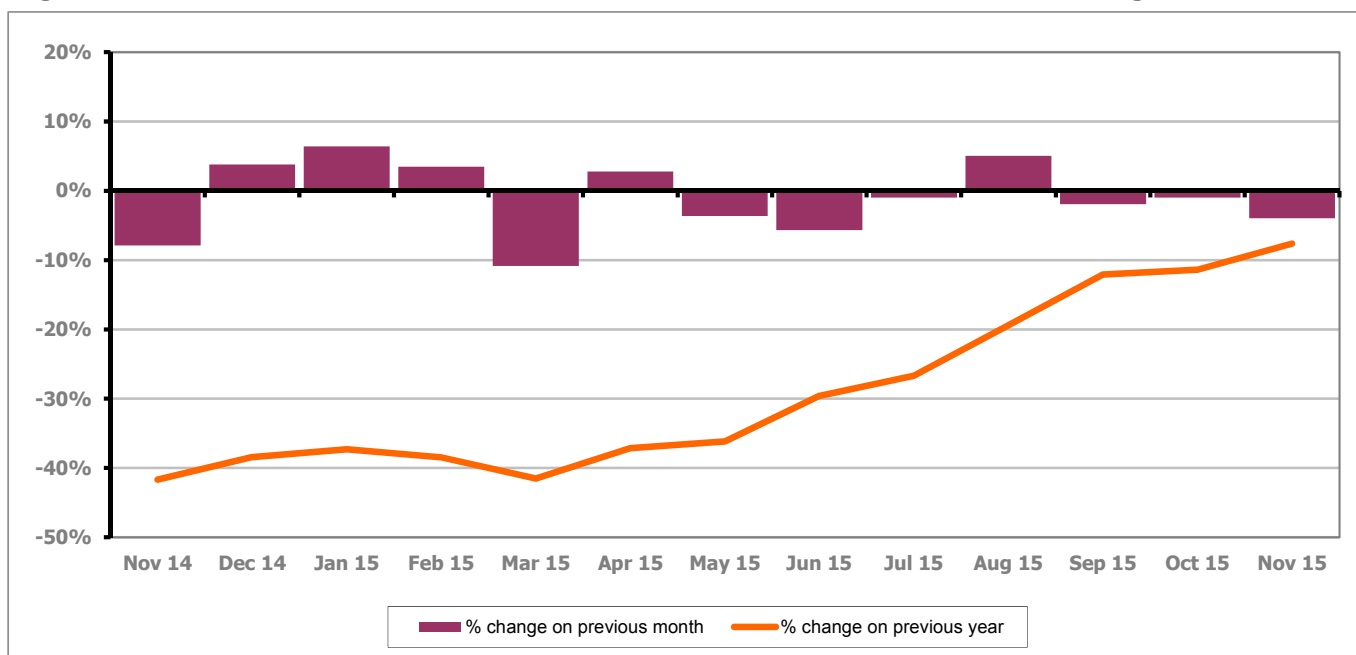


Figure 20 shows that the monthly claimant count decreased by 4.0% since October 2015. The change on the previous year increased between October and November 2015 to -7.6%.

PART 4: LOCAL AUTHORITY AND DISTRICT ANALYSIS

4.6 Tewkesbury District continued...

Figure 21: Claimant rates across Tewkesbury District wards - November 2015

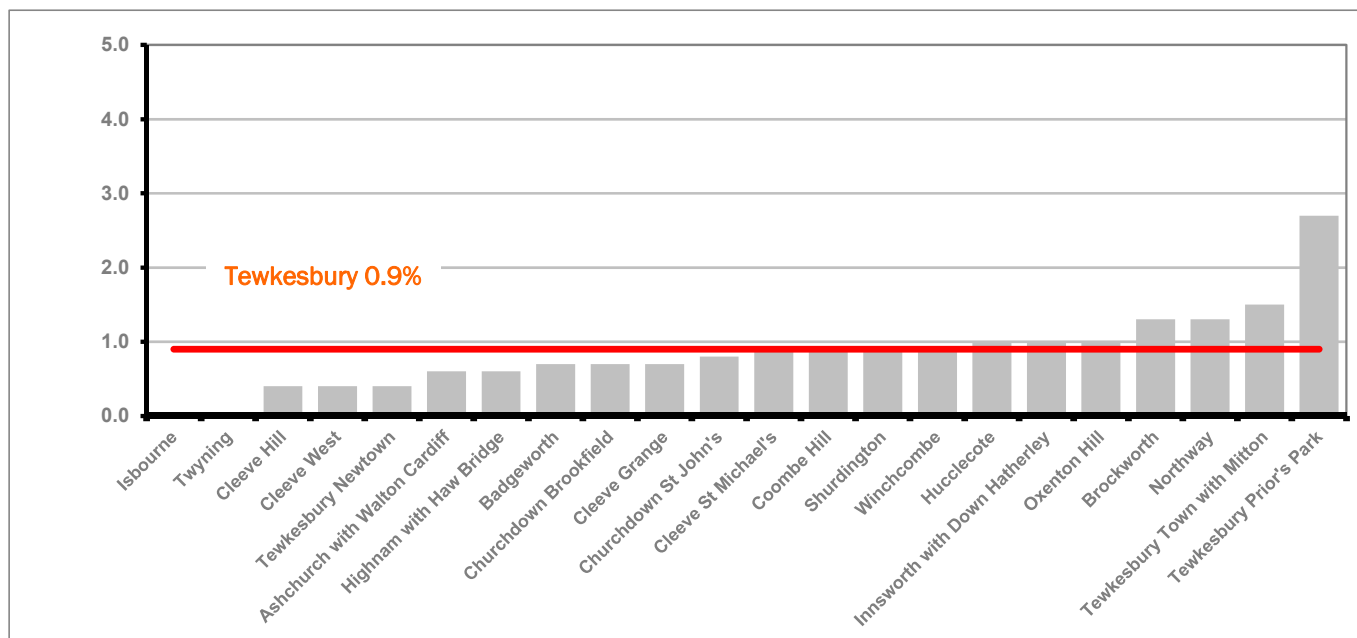


Figure 21 shows the claimant rates in Tewkesbury District wards. The red line represents the average claimant rate across the District of 0.9% and seven wards are above the average.

Table 10: Analysis of Claimant Count at Tewkesbury District level - November 2015

District	Ward	Rate	Rank*
Tewkesbury	Isbourne	<0.2	1
Tewkesbury	Twyning	<0.2	1
Tewkesbury	Cleeve Hill	0.4	17
Tewkesbury	Cleeve West	0.4	17
Tewkesbury	Tewkesbury Newtown	0.4	17
Tewkesbury	Ashchurch with Walton Cardiff	0.6	47
Tewkesbury	Highnam with Haw Bridge	0.6	47
Tewkesbury	Badgeworth	0.7	59
Tewkesbury	Churchdown Brookfield	0.7	59
Tewkesbury	Cleeve Grange	0.7	59
Tewkesbury	Churchdown St John's	0.8	78
Tewkesbury	Cleeve St Michael's	0.9	83
Tewkesbury	Coombe Hill	0.9	83
Tewkesbury	Shurdington	0.9	83
Tewkesbury	Winchcombe	0.9	83
Tewkesbury	Hucclecote	1.0	96
Tewkesbury	Innsworth with Down Hatherley	1.0	96
Tewkesbury	Oxenton Hill	1.0	96
Tewkesbury	Brockworth	1.3	116
Tewkesbury	Northway	1.3	116
Tewkesbury	Tewkesbury Town with Mitton	1.5	124
Tewkesbury	Tewkesbury Prior's Park	2.7	140

lowest 10% of county

first quartile of county

second quartile of county

third quartile of county

fourth quartile of county

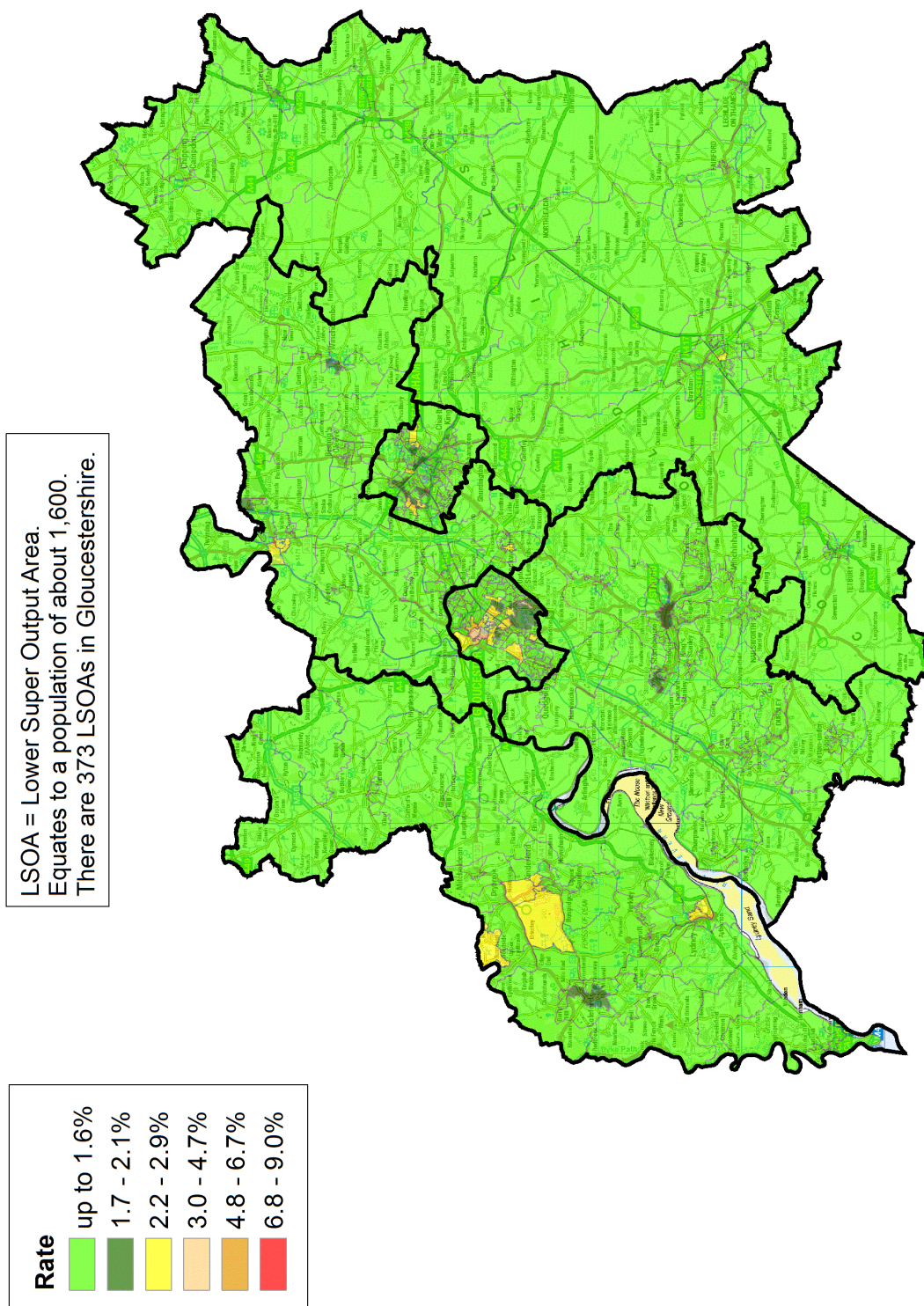
highest 10% of county

* 1 = "best" and 142 = "worst"

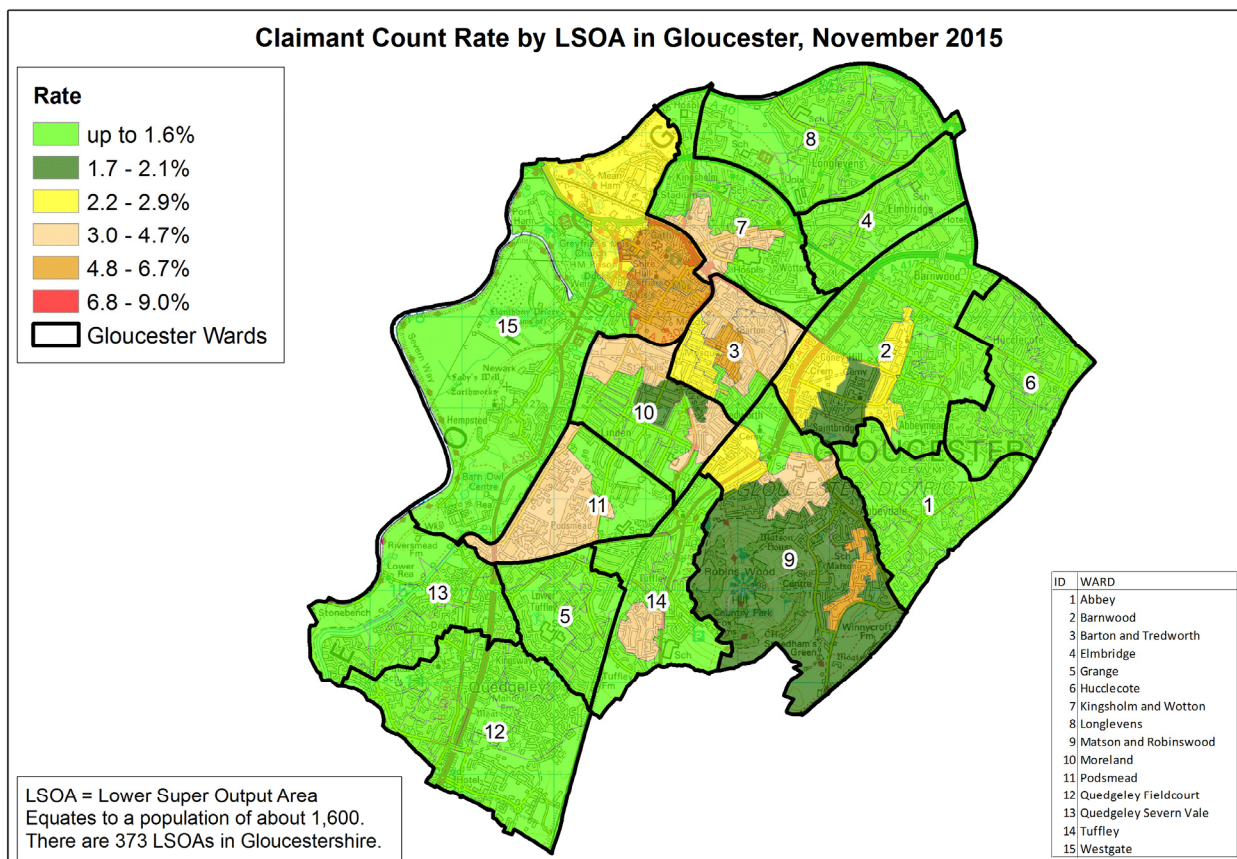
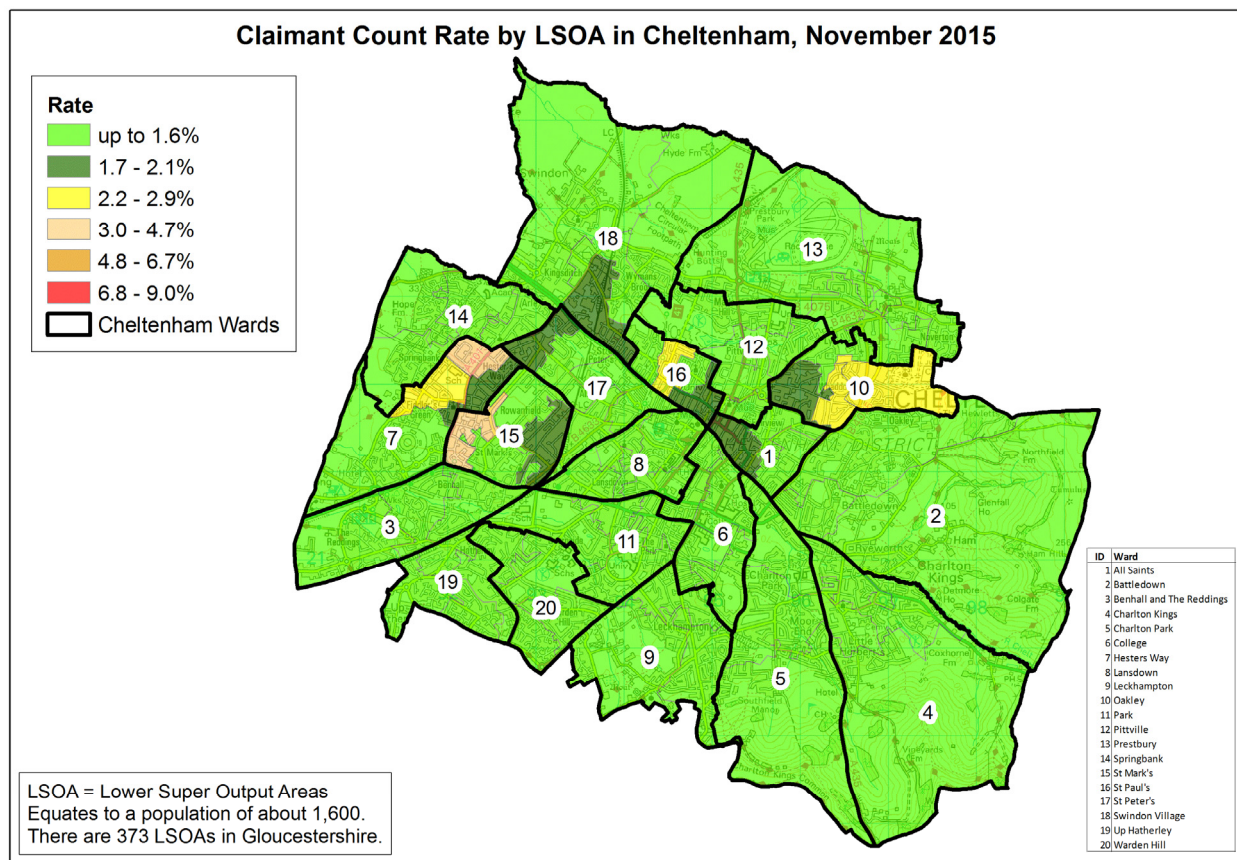
Table 10 shows overall claimant rates for Tewkesbury District wards and their position relative to all wards in Gloucestershire.

PART 5: MAP SHOWING DISTRIBUTION OF CLAIMANT RATE ACROSS GLOUCESTERSHIRE

Claimant Count Rate by LSOA in Gloucestershire, November 2015



PART 5: MAP SHOWING DISTRIBUTION OF CLAIMANT RATE ACROSS GLOUCESTERSHIRE



PART 6: YOUTH UNEMPLOYMENT(18-24 year olds)

Youth Claimant Rate and Claimant Count

Figure 22: Claimant Count for Gloucestershire over the past year

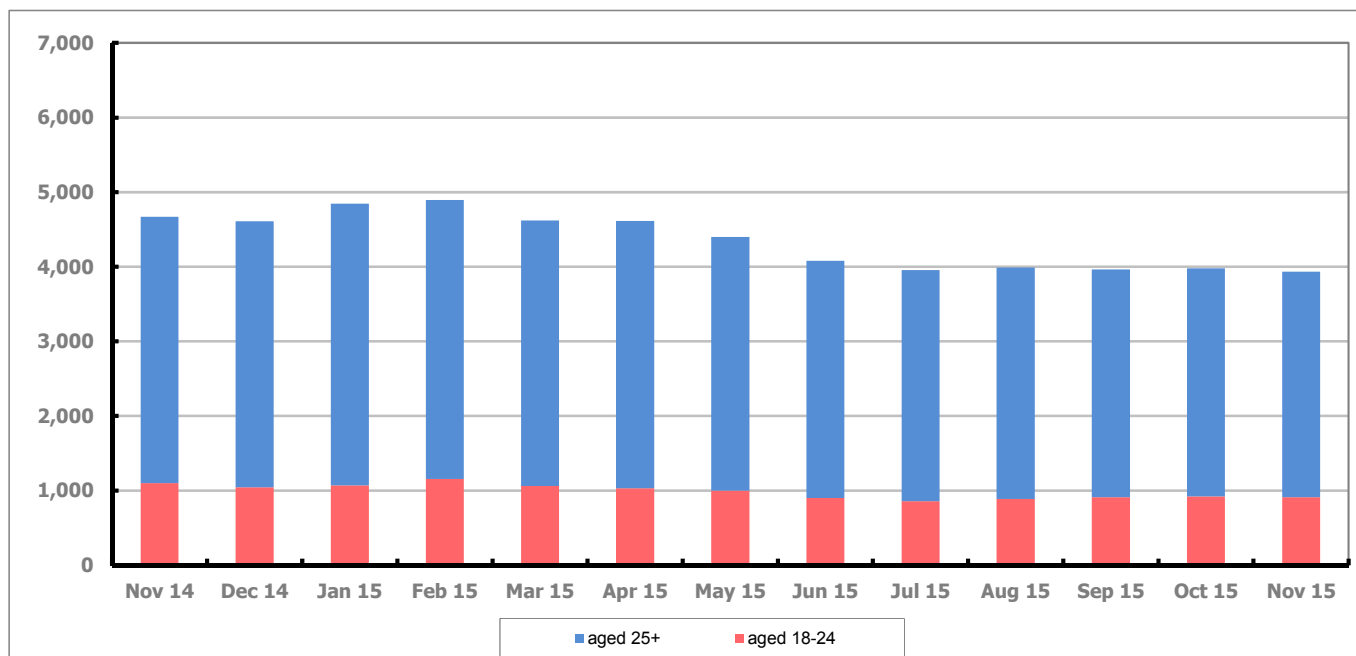


Figure 22 shows that in November 2015, 910 people aged 18-24 were claiming Job Seekers Allowance and Universal Credit who were not in work in Gloucestershire, this represents 23.1% of total working age claimants.

Figure 23: Youth Claimant Rate for Gloucestershire, the South West and UK over the past year

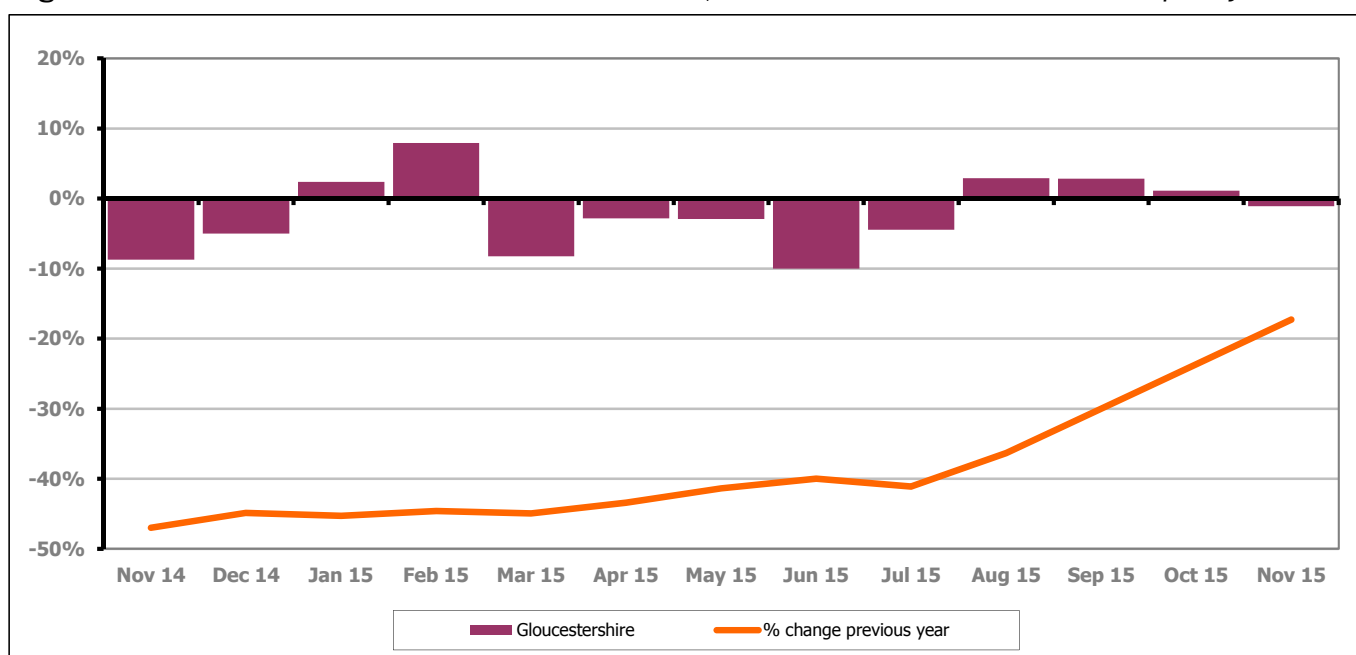


Figure 23 shows the number of young claimants decreased in November 2015 by 1.1% this represented 10 people. Over the last year the number of young claimants fell by 17.3% or 190 people.

PART 7: YOUNG PEOPLE NOT IN EDUCATION, EMPLOYMENT OR TRAINING (NEET) IN GLOUCESTERSHIRE

Data provided by Gloucestershire Youth Support Team on the situation of young people (16-18) in Gloucestershire who are not in education, employment or formal training.

Gloucestershire Youth Support Team is required to report performance with the 16-18 age range against nationally defined criteria for counting the NEET group. The NEET group includes young people actively seeking education, employment or training as well as those young people who are either not yet ready or who are unable to access these opportunities because of their personal circumstances. The figures quoted below include young people in both of these categories.

Summary

At the end of November 2015 there were 548 young people aged 16-18 not in education, employment or training in Gloucestershire and this figure translates into an adjusted (*) 16-18 NEET population of 3.46%. The total number of NEET young people increased by 9 in November 2015 compared to October 2015. Four districts saw an increase in their figures, two districts had a decrease.

Total NEET Group by District Area

November 2015 NEET data

	Cheltenham	Cotswold	Forest	Gloucester	Stroud	Tewkesbury	Total
Total NEET	99	47	71	180	77	74	548
Cohort	2944	2440	2494	4208	3553	2451	18090
% NEET	3.36	1.93	2.85	4.28	2.17	3.02	3.46*

If you would like to receive any further information on Gloucestershire's NEET strategy then please contact Ruth.Critchlow@Prospects.co.uk or telephone 01452 426900.

(*) Adjustment includes a proportion of young people aged 16-18 whose outcomes are not-known to Gloucestershire Youth Support Team.