

Unemployment Bulletin

Issue 134 September 2019

Contents

Part 1: Summary A summary of unemployment data at district, County, regional and national level	1
Part 2: County Unemployment figures for the County compared to the South West and the rest of the UK	3
Part 3: Districts A comparative break down of unemployment figures by district	4
Part 4: Wards Further breakdown of unemployment figures by ward:	
Cheltenham	6
Cotswolds	8
Forest of Dean	10
Gloucester	12
Stroud	14
Tewkesbury	16
Part 5: Map Distribution of claimant rate across Gloucestershire	18
Part 6: Youth Unemployment Unemployment data for the 18-24 year old age group	20
Part 7: Young People Data about Young People Not in Education, Employment or Training (NEET)	21

The Claimant Count is a measure of the number of people who are unemployed and claiming benefits. From 1996 until the recent introduction of Universal Credit, this was based on the number of people claiming Jobseeker's Allowance. However, since its introduction some unemployment benefit claimants will be claiming Universal Credit instead. **To reflect this change, the Claimant Count has been expanded to include people claiming Jobseeker's Allowance plus those who claim Universal Credit and who are searching for work.**

Gloucestershire is in the process of transitioning to full Universal Credit. This means a broader span of claimants will be required to look for work than previously under Jobseekers Allowance. As more people are brought within the coverage of Universal Credit, the Claimant Count is set to rise noticeably over time. This will happen irrespective of how the economy performs and is a feature of the design of Universal Credit which brings additional groups of people into 'Searching for Work' conditionality (and therefore the Claimant Count), to help encourage and support these claimants into work.

For more information about Universal Credit please see the [ONS website](https://www.ons.gov.uk/universal-credit).

INTRODUCTION

The Unemployment Bulletin provides a monthly update on unemployment data for Gloucestershire, the South West region and the United Kingdom. It is produced by the Data & Analysis Team in the County Council's Planning, Performance and Change function. The data are sourced from the Office for National Statistics via Nomis (www.nomis.co.uk). All data are rounded to the nearest 5 and may not precisely add to the sum of the number of people claiming JSA, and the number of people claiming Universal Credit required to seek work, due to independent rounding.

PART 1: SUMMARY

The claimant rate in Gloucestershire was 1.9% in September 2019. The South West and UK remained the same as last month at 2.0% and 2.8% respectively. Gloucestershire's rate was 0.1% lower than the South West average of 2.0%, and 0.9% lower than the UK average of 2.8%.

The claimant count in Gloucestershire in September 2019 increased by 65 people. The amount of people claiming in September 2019 was 0.9% higher than the number in August 2019. This compares to a 0.5% increase in the South West and a 1.1% increase for the UK.

Produced by:

Data & Analysis Team
Planning, Performance and Change
Gloucestershire County Council
October 2019

DISTRICTS AT A GLANCE

At a glance unemployment information grouped by district. Includes:

Claim count: Total number of people claiming Job Seekers Allowance and Universal Credit who are not in work in September 2019

Compared to last month: How much larger/smaller September's claimant count is compared to August expressed as a %

Claimant rate: The % of working age population claiming Job Seekers Allowance and Universal Credit who are not in work in September 2019

Highest claiming ward: The ward with the highest claim count in that district and the rate

CHELTEMHAM BOROUGH

Claim count:	1,420
Compared to last month:	1.8%
Claimant rate:	1.9%
Highest claiming ward	Hester's Way (4.2%)

GLOUCESTER CITY

Claim count:	2,240
Compared to last month:	-0.7%
Claimant rate:	2.7%
Highest claiming wards	Westgate (5.3%)

COTSWOLD DISTRICT

Claim count:	695
Compared to last month:	7.8%
Claimant rate:	1.3%
Highest claiming ward	Watermoor (3.8%)

STROUD DISTRICT

Claim count:	985
Compared to last month:	4.8%
Claimant rate:	1.4%
Highest claiming wards	Slade (3.7%)

FOREST OF DEAN

Claim count:	1,085
Compared to last month:	-3.1%
Claimant rate:	2.1%
Highest claiming ward	Lydney East (4.1%)

TEWKESBURY BOROUGH

Claim count:	870
Compared to last month:	-0.6%
Claimant rate:	1.6%
Highest claiming ward	Tewkesbury Prior's Park (3.4%)

PART 2: UK, SW AND GLOUCESTERSHIRE INDICATORS

The unemployment situation in Gloucestershire compared to the South West and the UK.

Claimant Rate

Figure 1: Claimant Rate for Gloucestershire, the South West and UK over the past year

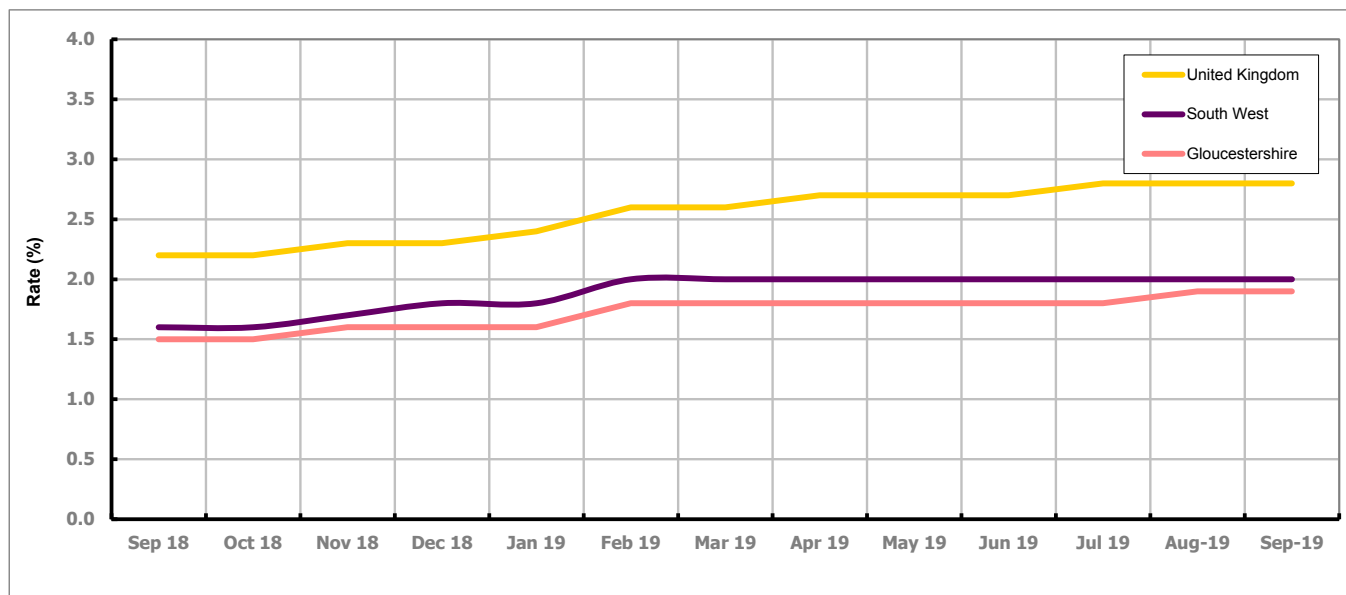


Figure 1 shows the claimant rate for Gloucestershire at 1.9% in September 2019. The Gloucestershire rate has been lower than the South West average since December 2015, with the exception of April and May 2016 when it was the same. It has been persistently lower by approximately 0.8% against the UK average.

Claimant Count

Table 1: Analysis of UK, South West and Gloucestershire Claimant Counts

Area	Claimant Count in September 2019	% change on August 2019	Consecutive months increasing
UK	1,176,950	1.1%	14
South West	69,110	0.5%	14
Gloucestershire	7,295	0.9%	15

Table 1 shows that in September 2019, the number of claimants in Gloucestershire was 0.9% higher than the number in August 2019.

PART 3: LOCAL AUTHORITY DISTRICT ANALYSIS

Claimant Rate and Claimant Count

Figure 2: Claimant Rate (%) across Gloucestershire - September 2019

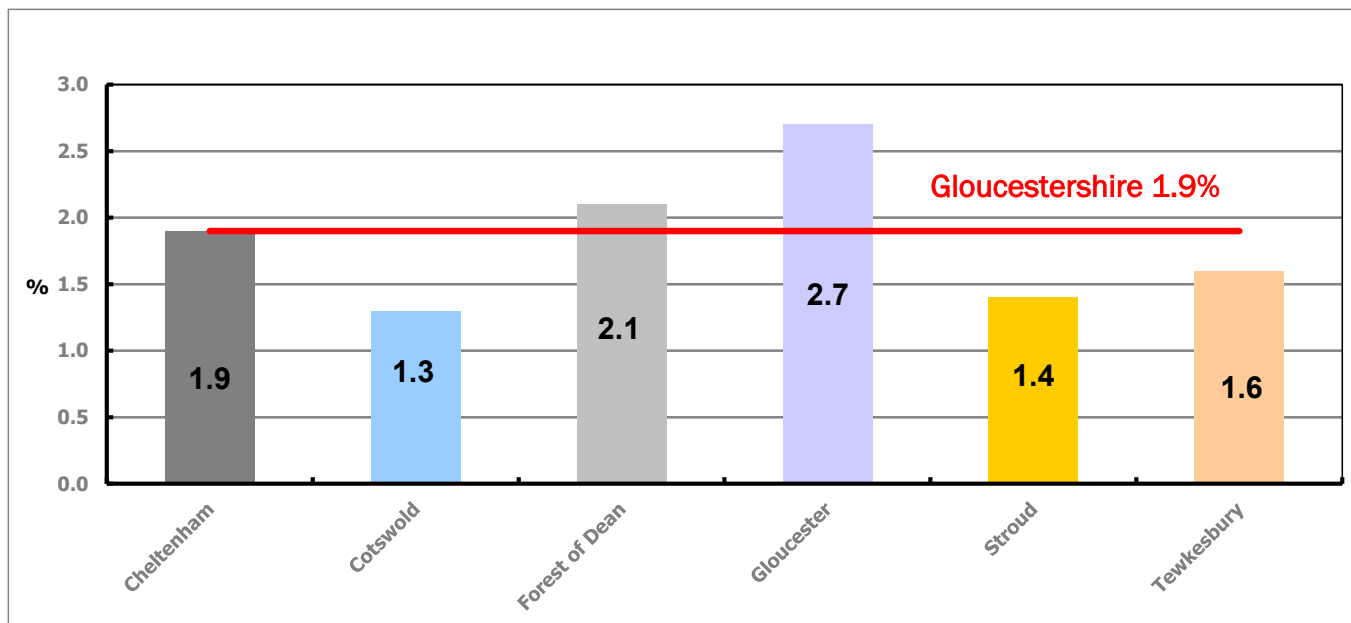


Figure 2 shows the claimant rate for September 2019 in Gloucestershire. Between August 2019 and September 2019 the rate increased in Stroud and decreased in the Forest of Dean and Gloucester. All other districts stayed the same.

Table 2: Analysis of Gloucestershire and District Claimant Counts

Total	Sep 19 Number	Sep 19 Rate	Aug 19 Number	Aug 19 Rate	Monthly change	% monthly change	Monthly change of rate
Gloucestershire	7,295	1.9	7,230	1.9	65	0.9%	0.0
Cheltenham	1,420	1.9	1,395	1.9	25	1.8%	0.0
Cotswold	695	1.3	645	1.3	50	7.8%	0.0
Forest of Dean	1,085	2.1	1,120	2.2	-35	-3.1%	-0.1
Gloucester	2,240	2.7	2,255	2.8	-15	-0.7%	-0.1
Stroud	985	1.4	940	1.3	45	4.8%	0.1
Tewkesbury	870	1.6	875	1.6	-5	-0.6%	0.0

Table 2 shows the change in the claimant count in September 2019 compared to August 2019. Cheltenham, Cotswold and Stroud saw an increase in the number of claimants, while the Forest of Dean, Gloucester and Tewkesbury saw a decline.

Table 3: Analysis of Male Gloucestershire and District Claimant Counts

Male	Sep 19 Number	Sep 19 Rate	Aug 19 Number	Aug 19 Rate	Monthly change	% monthly change	Monthly change of rate
Gloucestershire	4,185	2.2	4,170	2.2	15	0.4%	0.0
Cheltenham	860	2.3	845	2.3	15	1.8%	0.0
Cotswold	370	1.5	360	1.4	10	2.8%	0.1
Forest of Dean	610	2.4	635	2.5	-25	-3.9%	-0.1
Gloucester	1,330	3.3	1,350	3.3	-20	-1.5%	0.0
Stroud	545	1.5	510	1.4	35	6.9%	0.1
Tewkesbury	470	1.7	475	1.8	-5	-1.1%	-0.1

Table 3 shows the change in the male claimant count in September 2019 compared to August 2019. Cheltenham, Cotswold and Stroud saw an increase in the number of male claimants, while the Forest of Dean, Gloucester and Tewkesbury saw a decline.

Table 4: Analysis of Female Gloucestershire and District Claimant Counts

Female	Sep 19 Number	Sep 19 Rate	Aug 19 Number	Aug 19 Rate	Monthly change	% monthly change	Monthly change of rate
Gloucestershire	3,105	1.6	3,060	1.6	45	1.5%	0.0
Cheltenham	555	1.5	555	1.5	0	0.0%	0.0
Cotswold	325	1.2	285	1.1	40	14.0%	0.1
Forest of Dean	475	1.8	485	1.9	-10	-2.1%	-0.1
Gloucester	905	2.2	905	2.2	0	0.0%	0.0
Stroud	440	1.2	430	1.2	10	2.3%	0.0
Tewkesbury	405	1.4	400	1.4	5	1.3%	0.0

Table 4 shows the change in the female claimant count in September 2019 compared to August 2019. Cotswold, Stroud and Tewkesbury saw an increase in the number of female claimants, the Forest of Dean saw a decline, while Cheltenham and Gloucester saw no change

PART 4: LOCAL AUTHORITY DISTRICT AND WARD ANALYSIS

This section covers the six districts and a comparison of their constituent wards.

4.1 Cheltenham Borough

Claimant Rate and Claimant Count

Figure 3: Cheltenham Borough claimant rate over the last year

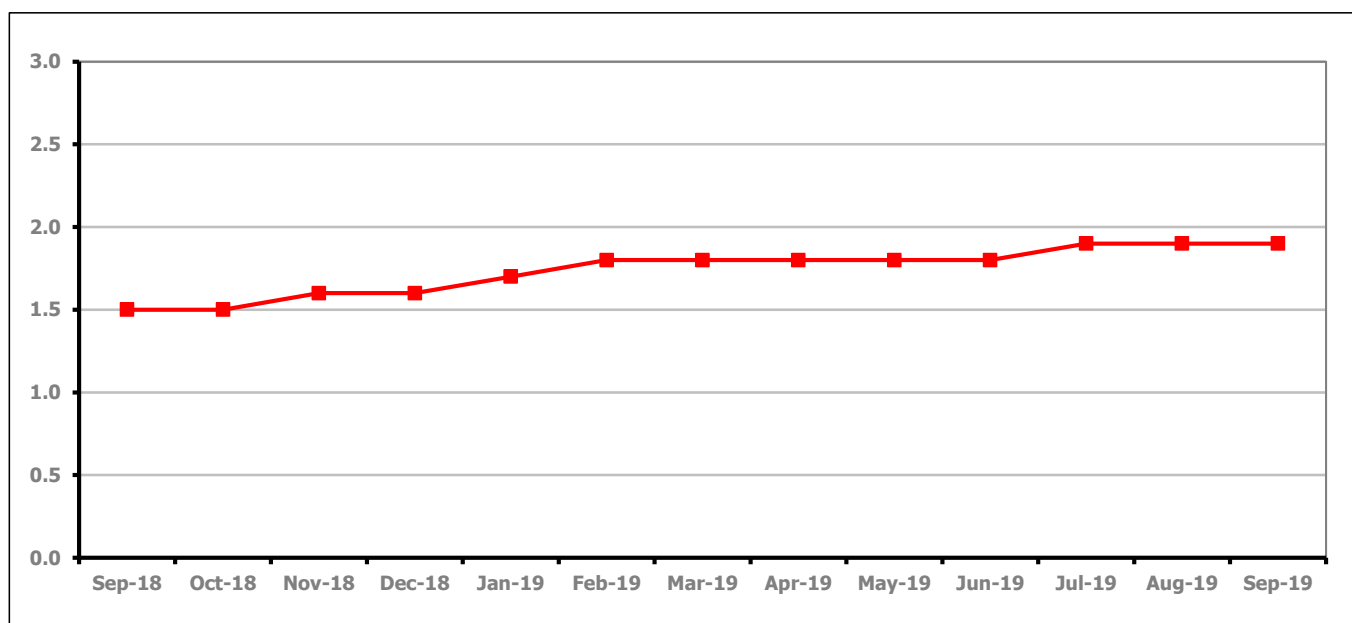


Figure 3 shows the claimant rate in Cheltenham stayed the same as last month at 1.9%.

Figure 4: Claimant rates across Cheltenham Borough wards - September 2019

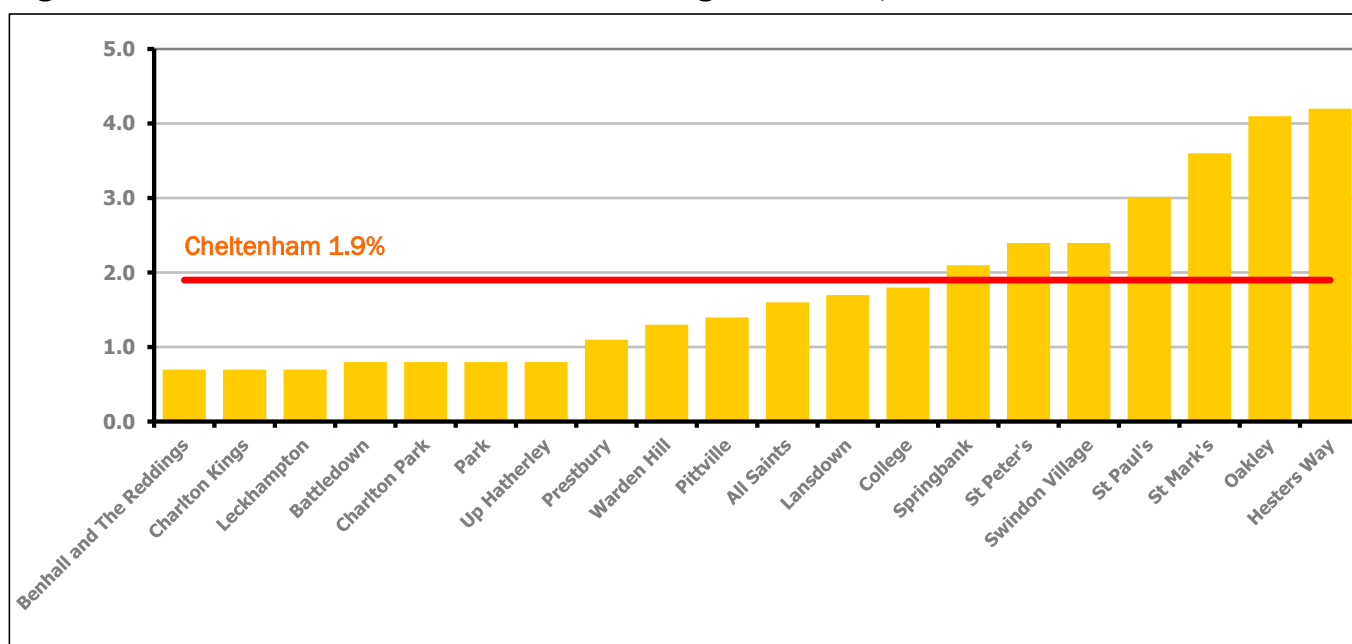


Figure 4 shows the claimant rates for Cheltenham Borough wards. The red line represents the average claimant rate across the Borough of 1.9%. Seven wards lie above the average.

PART 4: LOCAL AUTHORITY DISTRICT AND WARD ANALYSIS

4.1 Cheltenham Borough continued...

Table 5: Analysis of Claimant Count at Cheltenham Borough ward level - September 2019

District	Ward	Rate	Rank*
Cheltenham	Benhall and The Reddings	0.7	6
Cheltenham	Charlton Kings	0.7	6
Cheltenham	Leckhampton	0.7	6
Cheltenham	Battledown	0.8	14
Cheltenham	Charlton Park	0.8	14
Cheltenham	Park	0.8	14
Cheltenham	Up Hatherley	0.8	14
Cheltenham	Prestbury	1.1	44
Cheltenham	Warden Hill	1.3	61
Cheltenham	Pittville	1.4	73
Cheltenham	All Saints	1.6	86
Cheltenham	Lansdown	1.7	90
Cheltenham	College	1.8	96
Cheltenham	Springbank	2.1	110
Cheltenham	St Peter's	2.4	121
Cheltenham	Swindon Village	2.4	121
Cheltenham	St Paul's	3.0	129
Cheltenham	St Mark's	3.6	135
Cheltenham	Oakley	4.1	139
Cheltenham	Hesters Way	4.2	142

	lowest 10% of county
	first quartile of county
	second quartile of county
	third quartile of county
	fourth quartile of county
	highest 10% of county

* 1 = "best" and 146 = "worst"

Table 5 shows overall claimant rates for Cheltenham Borough wards and their position relative to all wards in Gloucestershire.

PART 4: LOCAL AUTHORITY DISTRICT AND WARD ANALYSIS

4.2 Cotswold District

Claimant Rate and Claimant Count

Figure 5: Cotswold District claimant rate over the last year

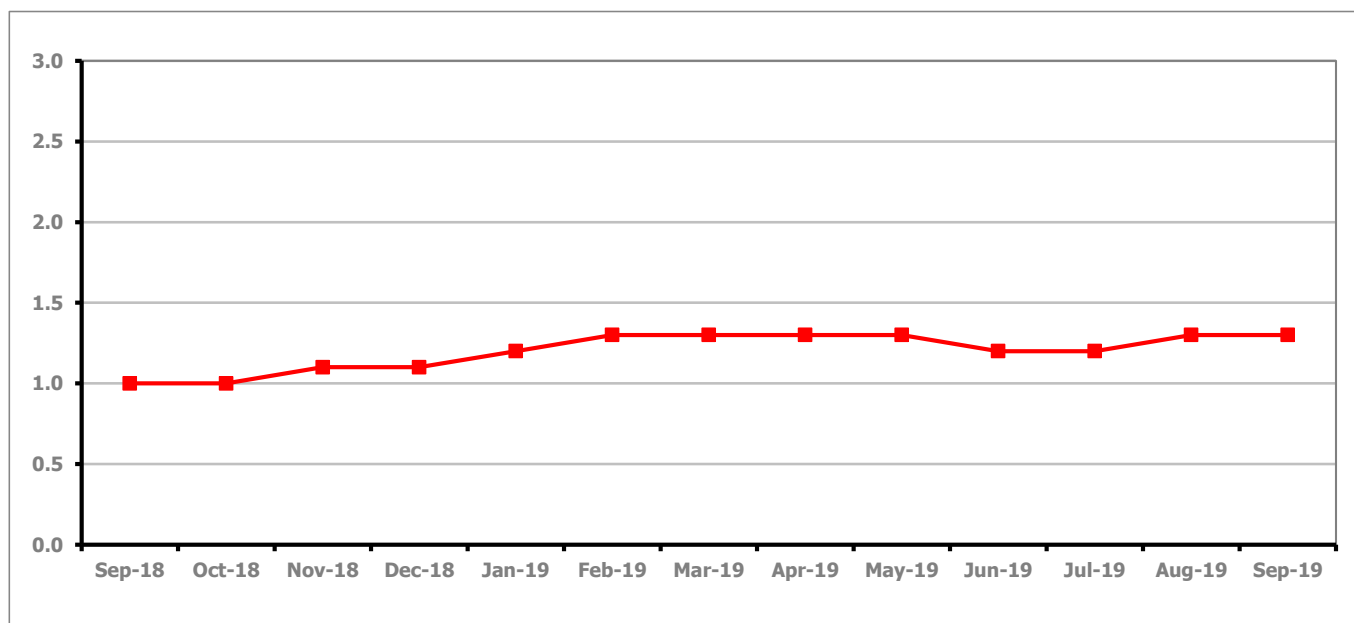


Figure 5 shows the claimant rate in Cotswold District remained the same as last month at 1.3%.

Figure 6: Claimant rates across Cotswold District wards - September 2019

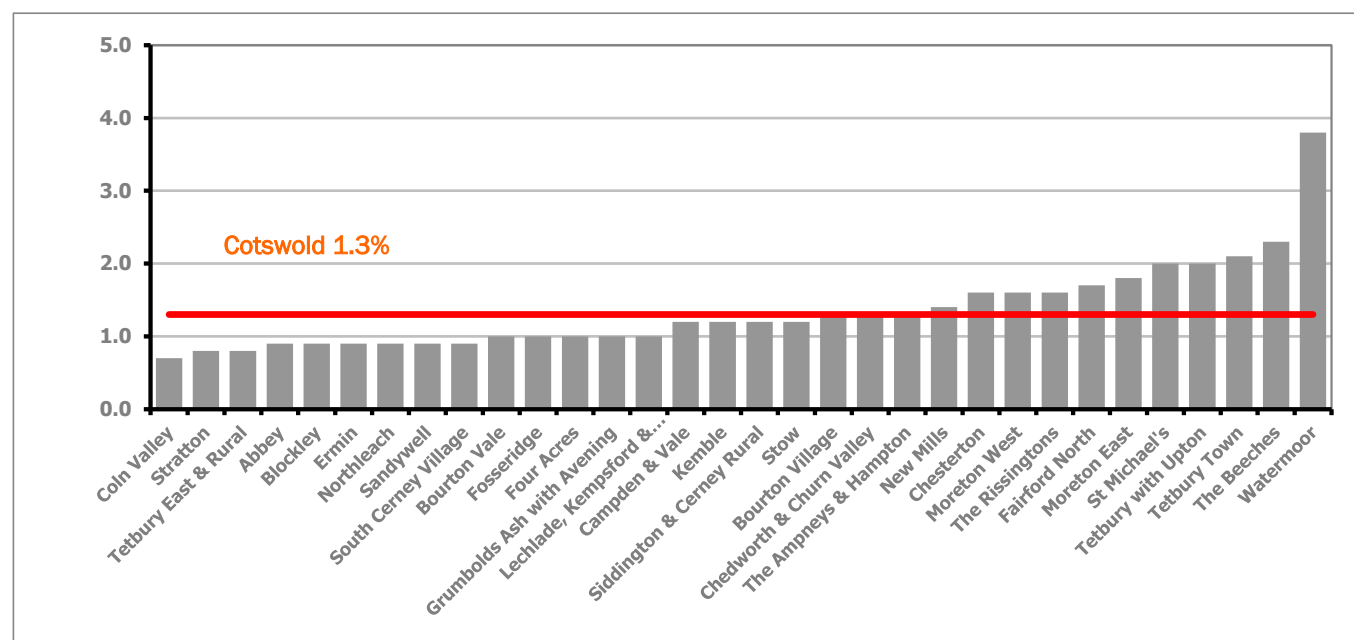


Figure 6 shows the claimant rates for Cotswold District wards. The red line represents the average claimant rate across the District of 1.3%. Eleven wards lie above the average.

PART 4: LOCAL AUTHORITY DISTRICT AND WARD ANALYSIS

4.2 Cotswold District continued...

Table 6: Analysis of Claimant Count at Cotswold District ward level - September 2019

District	Ward	Rate	Rank*
Cotswolds	Coln Valley	0.7	6
Cotswolds	Stratton	0.8	14
Cotswolds	Tetbury East & Rural	0.8	14
Cotswolds	Abbey	0.9	26
Cotswolds	Blockley	0.9	26
Cotswolds	Ermin	0.9	26
Cotswolds	Northleach	0.9	26
Cotswolds	Sandywell	0.9	26
Cotswolds	South Cerney Village	0.9	26
Cotswolds	Bourton Vale	1.0	35
Cotswolds	Fosseridge	1.0	35
Cotswolds	Four Acres	1.0	35
Cotswolds	Grumbolds Ash with Avening	1.0	35
Cotswolds	Lechlade, Kempsford & Fairford South	1.0	35
Cotswolds	Campden & Vale	1.2	49
Cotswolds	Kemble	1.2	49
Cotswolds	Siddington & Cerney Rural	1.2	49
Cotswolds	Stow	1.2	49
Cotswolds	Bourton Village	1.3	61
Cotswolds	Chedworth & Churn Valley	1.3	61
Cotswolds	The Ampneys & Hampton	1.3	61
Cotswolds	New Mills	1.4	73
Cotswolds	Chesterton	1.6	86
Cotswolds	Moreton West	1.6	86
Cotswolds	The Rissingtons	1.6	86
Cotswolds	Fairford North	1.7	90
Cotswolds	Moreton East	1.8	96
Cotswolds	St Michael's	2.0	106
Cotswolds	Tetbury with Upton	2.0	106
Cotswolds	Tetbury Town	2.1	110
Cotswolds	The Beeches	2.3	119
Cotswolds	Watermoor	3.8	137

	lowest 10% of county
	first quartile of county
	second quartile of county
	third quartile of county
	fourth quartile of county
	highest 10% of county

* 1 = "best" and 146 = "worst"

Table 6 shows overall claimant rates for Cotswold District wards and their position relative to all wards in Gloucestershire.

PART 4: LOCAL AUTHORITY DISTRICT AND WARD ANALYSIS

4.3 Forest of Dean District

Claimant Rate and Claimant Count

Figure 7: Forest of Dean District claimant rate over the last year

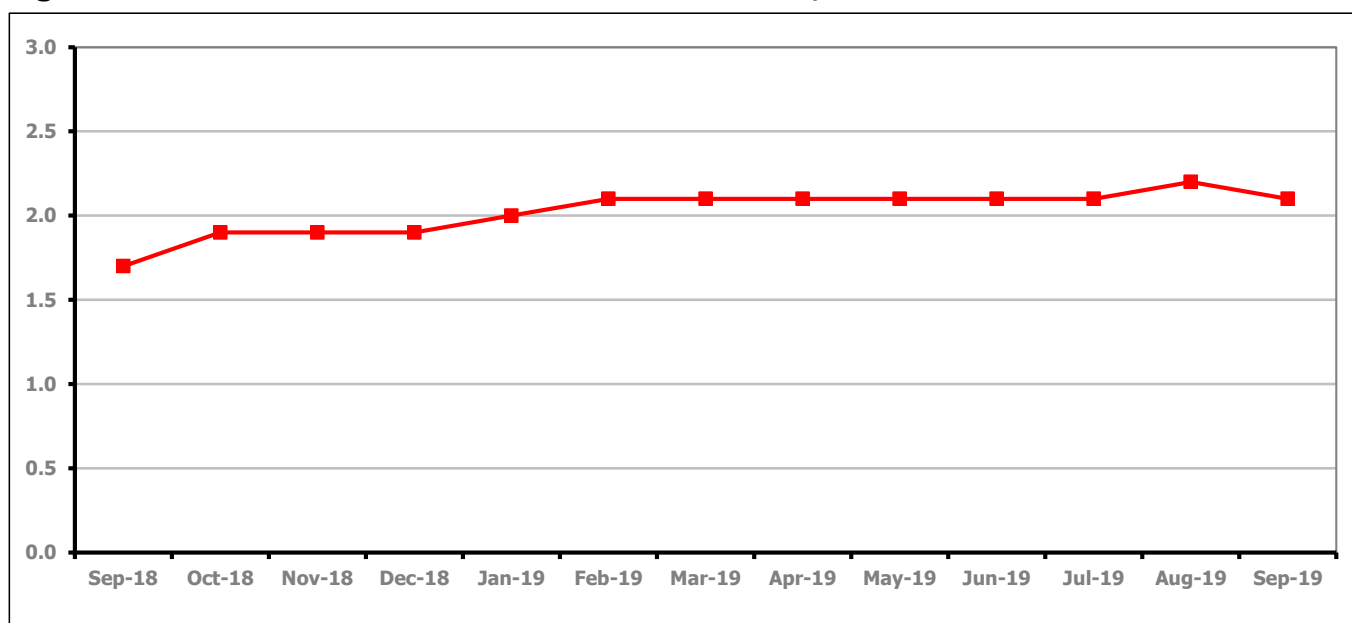


Figure 7 shows the claimant rate in the Forest of Dean decreased in September 2019 to 2.1%

Figure 8: Claimant rates across Forest of Dean District wards - September 2019

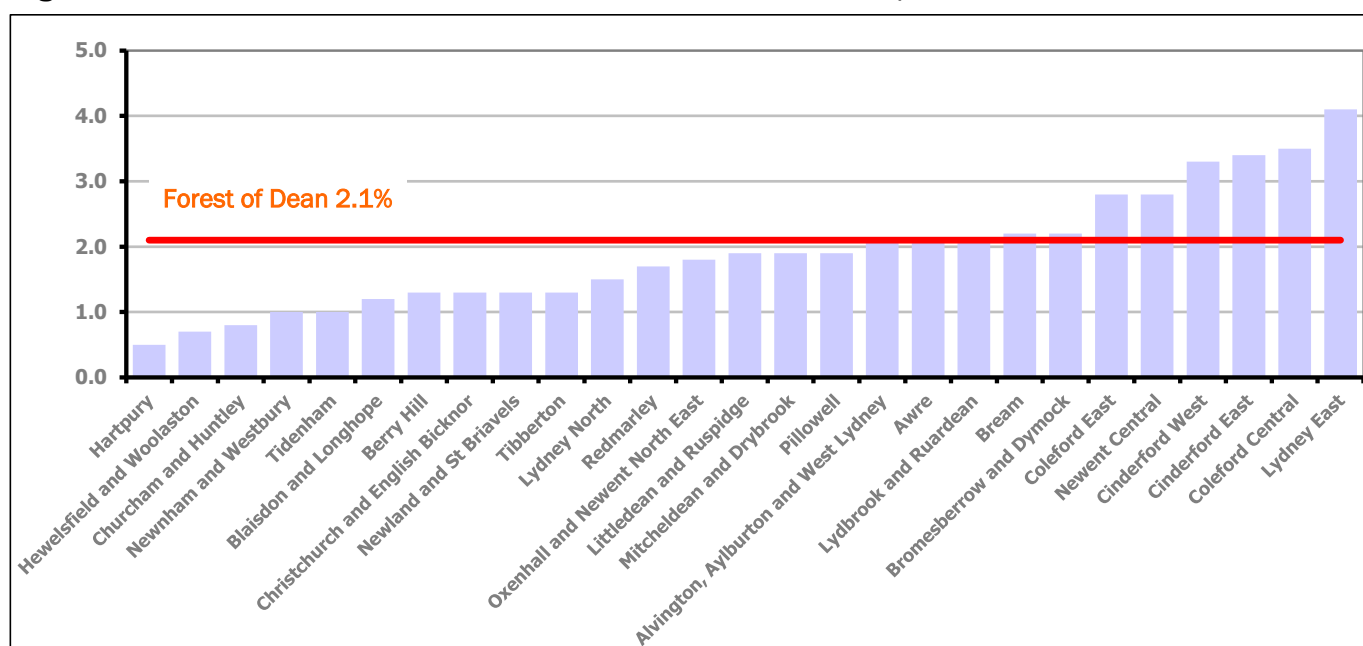


Figure 8 shows the claimant rates for the Forest of Dean District wards. The red line represents the average claimant rate across the District of 2.1%. Eight wards lie above the average.

PART 4: LOCAL AUTHORITY DISTRICT AND WARD ANALYSIS

4.3 Forest of Dean District continued...

Table 7: Analysis of Claimant Count at Forest of Dean District ward level - September 2019

District	Ward	Rate	Rank*
Forest	Hartpury	0.5	1
Forest	Hewelsfield and Woolaston	0.7	6
Forest	Churcham and Huntley	0.8	14
Forest	Newnham and Westbury	1.0	35
Forest	Tidenham	1.0	35
Forest	Blaisdon and Longhope	1.2	49
Forest	Berry Hill	1.3	61
Forest	Christchurch and English Bicknor	1.3	61
Forest	Newland and St Briavels	1.3	61
Forest	Tibberton	1.3	61
Forest	Lydney North	1.5	80
Forest	Redmarley	1.7	90
Forest	Oxenhall and Newent North East	1.8	96
Forest	Littledean and Ruspidge	1.9	103
Forest	Mitcheldean and Drybrook	1.9	103
Forest	Pillowell	1.9	103
Forest	Alvington, Aylburton and West Lydney	2.1	110
Forest	Awre	2.1	110
Forest	Lydbrook and Ruardean	2.1	110
Forest	Bream	2.2	117
Forest	Bromesberrow and Dymock	2.2	117
Forest	Coleford East	2.8	126
Forest	Newent Central	2.8	126
Forest	Cinderford West	3.3	130
Forest	Cinderford East	3.4	132
Forest	Coleford Central	3.5	134
Forest	Lydney East	4.1	139

	lowest 10% of county
	first quartile of county
	second quartile of county
	third quartile of county
	fourth quartile of county
	highest 10% of county

* 1 = "best" and 146 = "worst"

Table 7 shows overall claimant rates for the Forest of Dean District wards and their position relative to all wards in Gloucestershire.

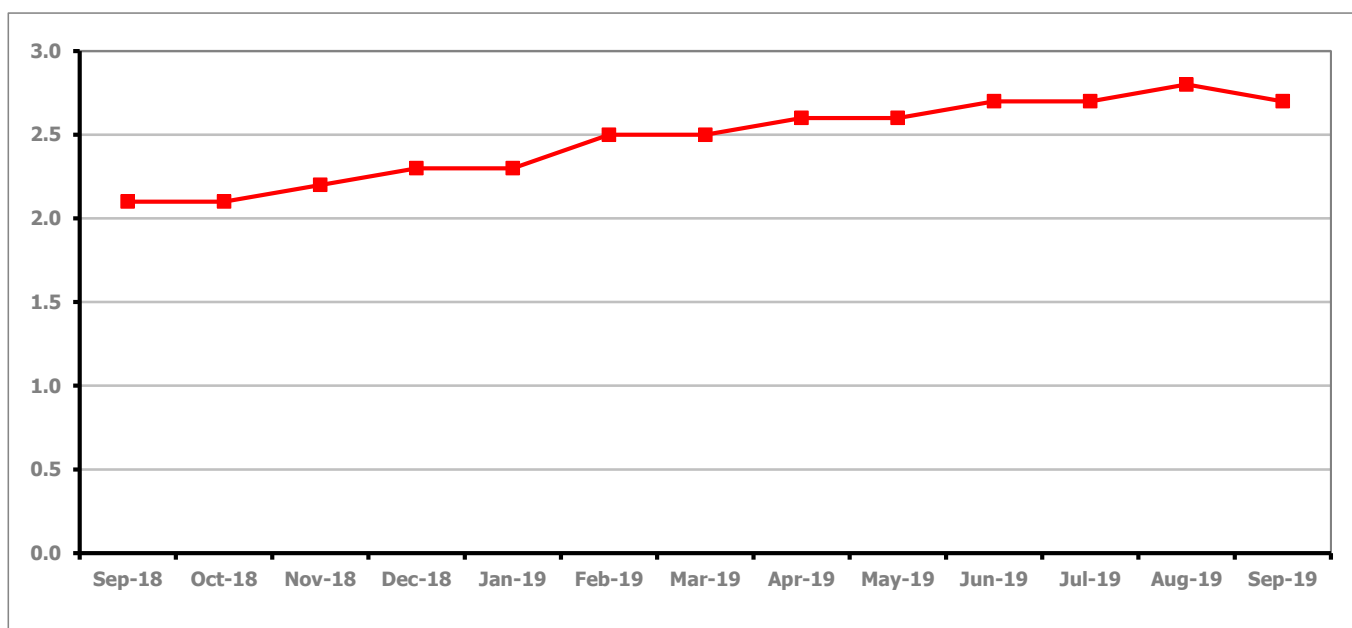
PART 4: LOCAL AUTHORITY DISTRICT AND WARD ANALYSIS**4.4 Gloucester City****Claimant Rate and Claimant Count***Figure 9: Gloucester City claimant rate over the last year*

Figure 9 shows the claimant rate for Gloucester City decreased in September 2019 to 2.7%.

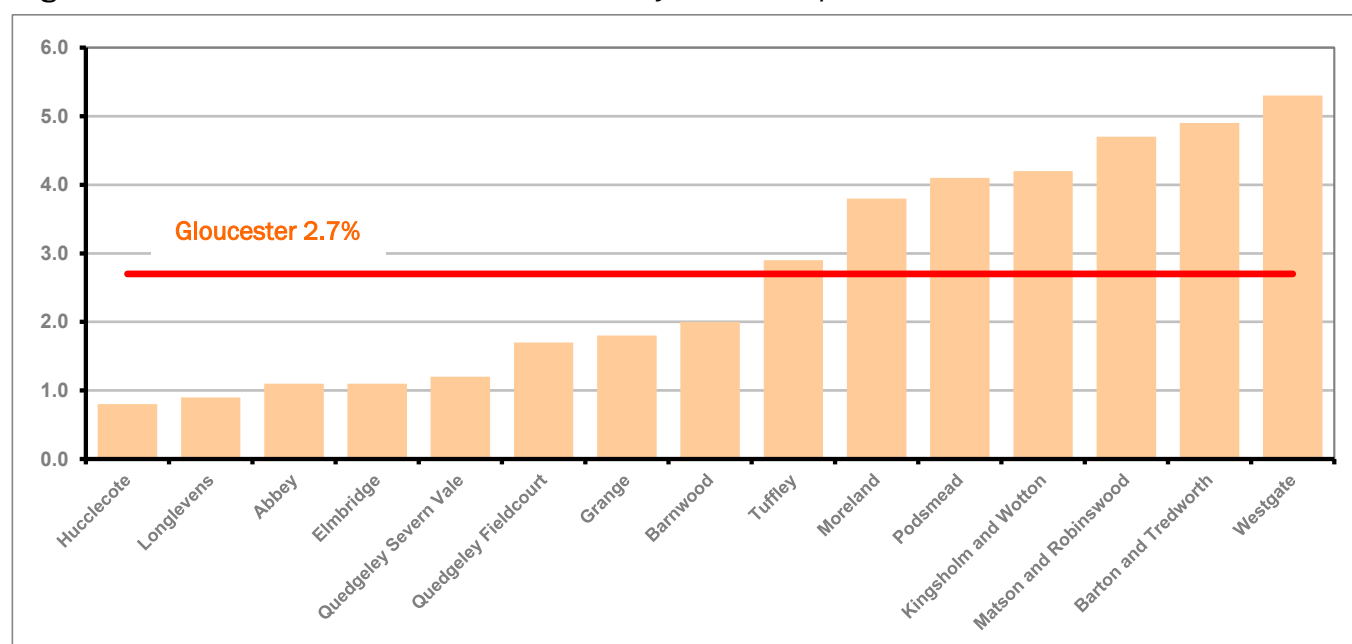
Figure 10: Claimant rates across Gloucester City wards - September 2019

Figure 10 shows the claimant rates for Gloucester City district wards. The red line represents the average claimant rate across the City of 2.7%. Seven wards lie above the average.

PART 4: LOCAL AUTHORITY DISTRICT AND WARD ANALYSIS

4.4 Gloucester City continued...

Table 8: Analysis of Claimant Count at Gloucester City ward level - September 2019

District	Ward	Rate	Rank*
Gloucester	Hucclecote	0.8	14
Gloucester	Longlevens	0.9	26
Gloucester	Abbey	1.1	44
Gloucester	Elmbridge	1.1	44
Gloucester	Quedgeley Severn Vale	1.2	49
Gloucester	Quedgeley Fieldcourt	1.7	90
Gloucester	Grange	1.8	96
Gloucester	Barnwood	2.0	106
Gloucester	Tuffley	2.9	128
Gloucester	Moreland	3.8	137
Gloucester	Podsmead	4.1	139
Gloucester	Kingsholm and Wotton	4.2	142
Gloucester	Matson and Robinswood	4.7	144
Gloucester	Barton and Tredworth	4.9	145
Gloucester	Westgate	5.3	146

	lowest 10% of county
	first quartile of county
	second quartile of county
	third quartile of county
	fourth quartile of county
	highest 10% of county

* 1 = "best" and 146 = "worst"

Table 8 shows overall claimant rates for Gloucester City wards and their position relative to all wards in Gloucestershire.

PART 4: LOCAL AUTHORITY DISTRICT AND WARD ANALYSIS

4.5 Stroud District

Claimant Rate and Claimant Count

Figure 11: Stroud District claimant rate over the last year

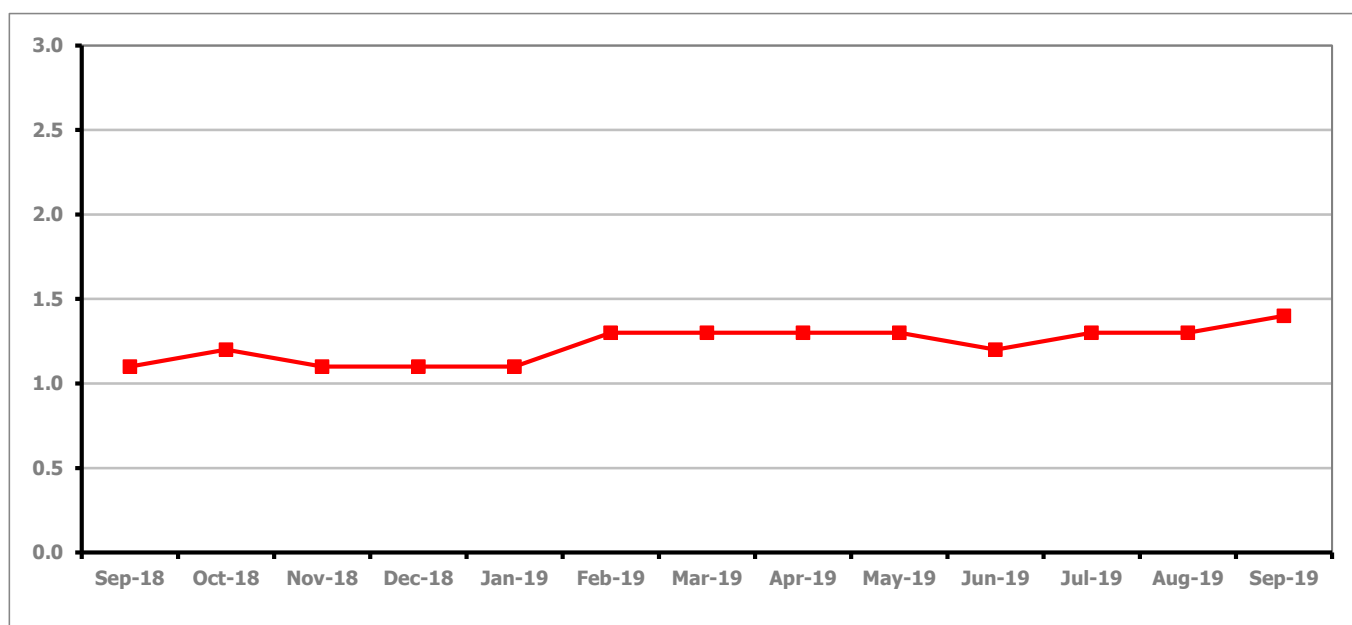


Figure 11 shows the claimant rate for Stroud increased in September 2019 to 1.4%.

Figure 12: Claimant rates across Stroud District wards - September 2019

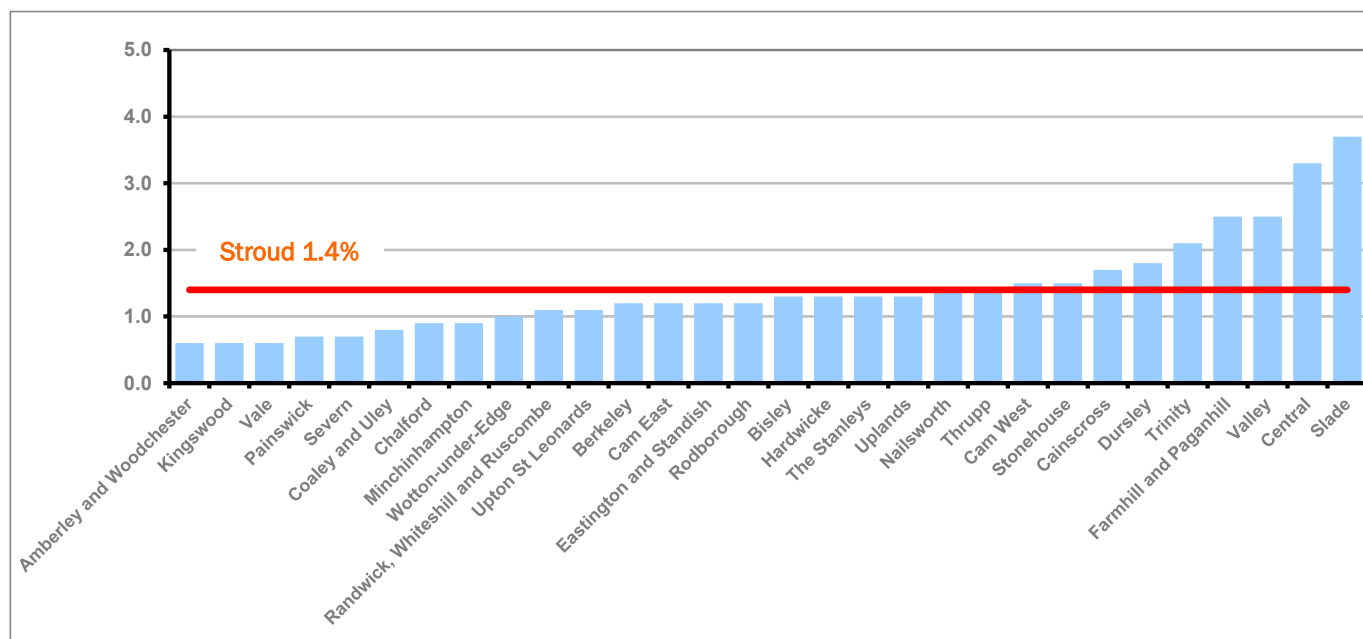


Figure 12 shows the claimant rates in Stroud District wards. The red line represents the average claimant rate across the District of 1.4%. Nine wards are above the average.

PART 4: LOCAL AUTHORITY AND DISTRICT ANALYSIS

4.5 Stroud District continued...

Table 9: Analysis of Claimant Count at Stroud District ward level - September 2019

District	Ward	Rate	Rank*
Stroud	Amberley and Woodchester	0.6	2
Stroud	Kingswood	0.6	2
Stroud	Vale	0.6	2
Stroud	Painswick	0.7	6
Stroud	Severn	0.7	6
Stroud	Coaley and Uley	0.8	14
Stroud	Chalford	0.9	26
Stroud	Minchinhampton	0.9	26
Stroud	Wotton-under-Edge	1.0	35
Stroud	Randwick, Whiteshill and Ruscombe	1.1	44
Stroud	Upton St Leonards	1.1	44
Stroud	Berkeley	1.2	49
Stroud	Cam East	1.2	49
Stroud	Eastington and Standish	1.2	49
Stroud	Rodborough	1.2	49
Stroud	Bisley	1.3	61
Stroud	Hardwicke	1.3	61
Stroud	The Stanleys	1.3	61
Stroud	Uplands	1.3	61
Stroud	Nailsworth	1.4	73
Stroud	Thrupp	1.4	73
Stroud	Cam West	1.5	80
Stroud	Stonehouse	1.5	80
Stroud	Cainscross	1.7	90
Stroud	Dursley	1.8	96
Stroud	Trinity	2.1	110
Stroud	Farmhill and Paganhill	2.5	124
Stroud	Valley	2.5	124
Stroud	Central	3.3	130
Stroud	Slade	3.7	136

	lowest 10% of county
	first quartile of county
	second quartile of county
	third quartile of county
	fourth quartile of county
	highest 10% of county

* 1 = "best" and 146 = "worst"

Table 9 shows overall claimant rates for Stroud District wards and their position relative to all wards in Gloucestershire.

PART 4: LOCAL AUTHORITY DISTRICT AND WARD ANALYSIS

4.6 Tewkesbury Borough

Claimant Rate and Claimant Count

Figure 13: Tewkesbury Borough claimant rate over the last year

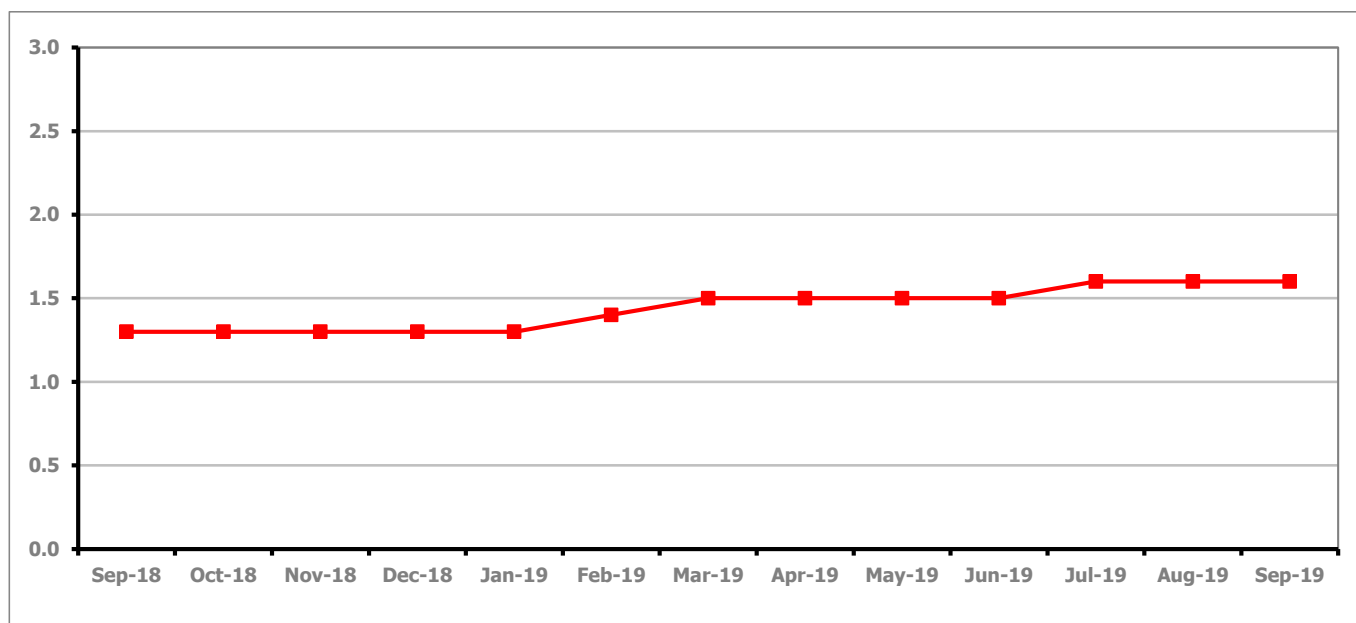


Figure 13 shows the claimant rate for Tewkesbury Borough stayed the same as last month at 1.6%.

Figure 14: Claimant rates across Tewkesbury Borough wards - September 2019

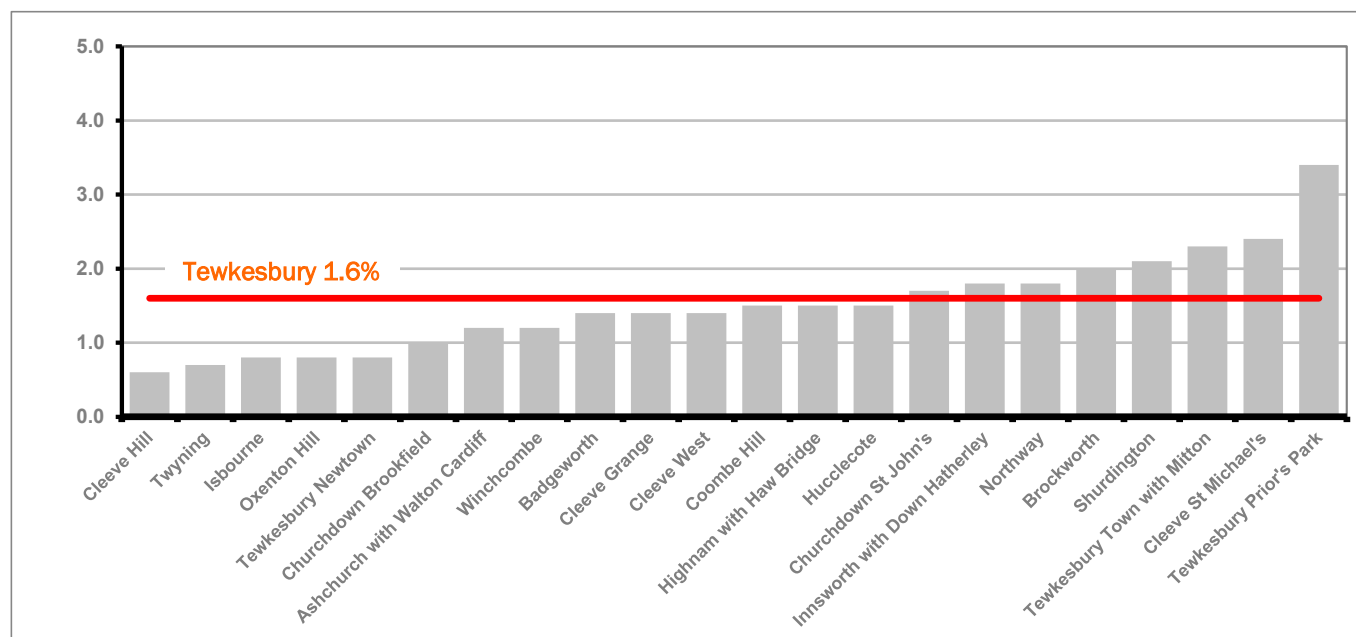


Figure 14 shows the claimant rates in Tewkesbury Borough wards. The red line represents the average claimant rate across the District of 1.6%. Eight wards are above the average.

PART 4: LOCAL AUTHORITY AND DISTRICT ANALYSIS

4.6 Tewkesbury Borough continued...

Table 10: Analysis of Claimant Count at Tewkesbury Borough level - September 2019

District	Ward	Rate	Rank*
Tewkesbury	Cleeve Hill	0.6	2
Tewkesbury	Twynning	0.7	6
Tewkesbury	Isbourne	0.8	14
Tewkesbury	Oxenton Hill	0.8	14
Tewkesbury	Tewkesbury Newtown	0.8	14
Tewkesbury	Churchdown Brookfield	1.0	35
Tewkesbury	Ashchurch with Walton Cardiff	1.2	49
Tewkesbury	Winchcombe	1.2	49
Tewkesbury	Badgeworth	1.4	73
Tewkesbury	Cleeve Grange	1.4	73
Tewkesbury	Cleeve West	1.4	73
Tewkesbury	Coombe Hill	1.5	80
Tewkesbury	Highnam with Haw Bridge	1.5	80
Tewkesbury	Hucclecote	1.5	80
Tewkesbury	Churchdown St John's	1.7	90
Tewkesbury	Innsworth with Down Hatherley	1.8	96
Tewkesbury	Northway	1.8	96
Tewkesbury	Brockworth	2.0	106
Tewkesbury	Shurdington	2.1	110
Tewkesbury	Tewkesbury Town with Mitton	2.3	119
Tewkesbury	Cleeve St Michael's	2.4	121
Tewkesbury	Tewkesbury Prior's Park	3.4	132

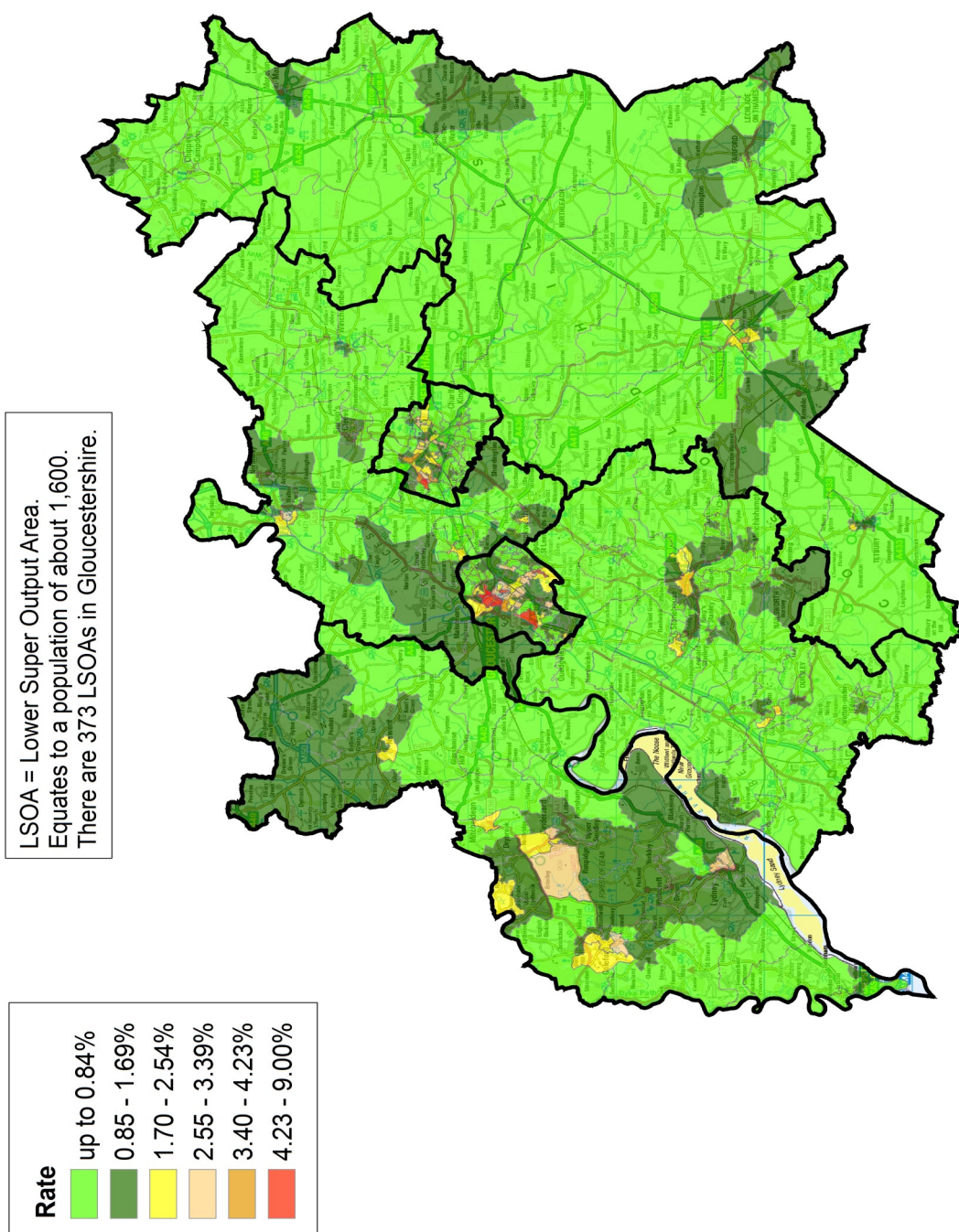
	lowest 10% of county
	first quartile of county
	second quartile of county
	third quartile of county
	fourth quartile of county
	highest 10% of county

* 1 = "best" and 146 = "worst"

Table 10 shows overall claimant rates for Tewkesbury Borough wards and their position relative to all wards in Gloucestershire.

PART 5: MAP SHOWING DISTRIBUTION OF CLAIMANT RATE ACROSS GLOUCESTERSHIRE

Claimant Count Rate by LSOA in Gloucestershire, September 2019

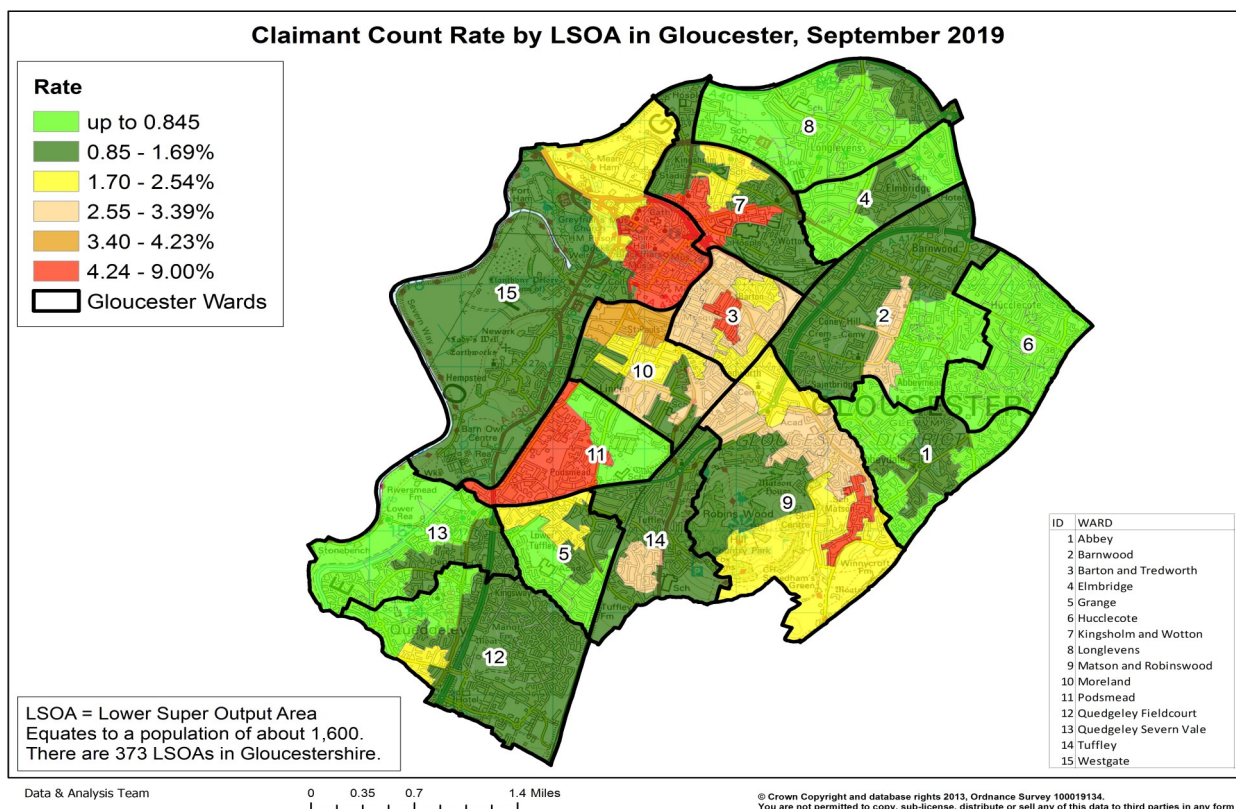
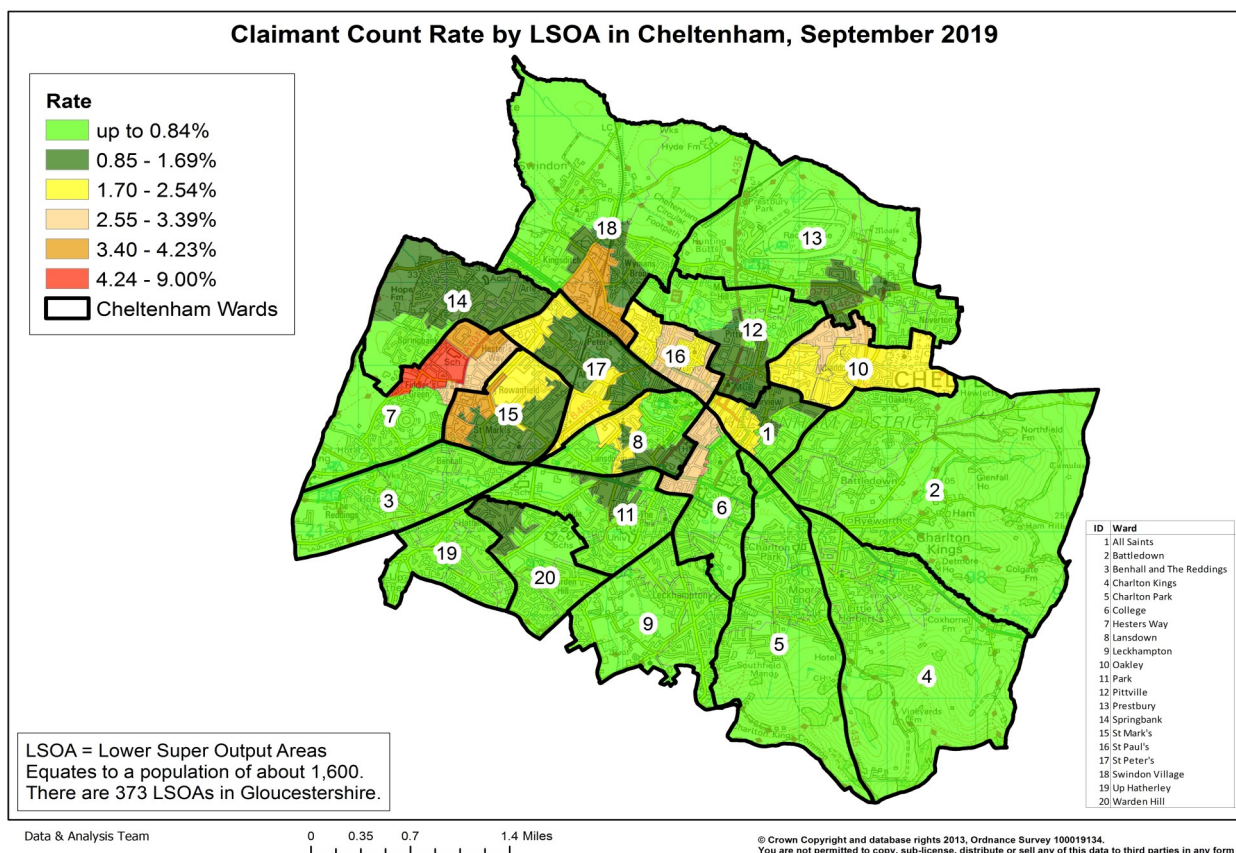


Data & Analysis Team

0 2.75 5.5 11 Miles

© Crown Copyright and database rights 2013, Ordnance Survey 100019134.
You are not permitted to copy, sub-license, distribute or sell any of this data to third parties in any form

PART 5: MAP SHOWING DISTRIBUTION OF CLAIMANT RATE ACROSS GLOUCESTERSHIRE



PART 6: YOUTH UNEMPLOYMENT(18-24 year olds)

Youth Claimant Rate and Claimant Count

Figure 15: Claimant Count for Gloucestershire over the past year

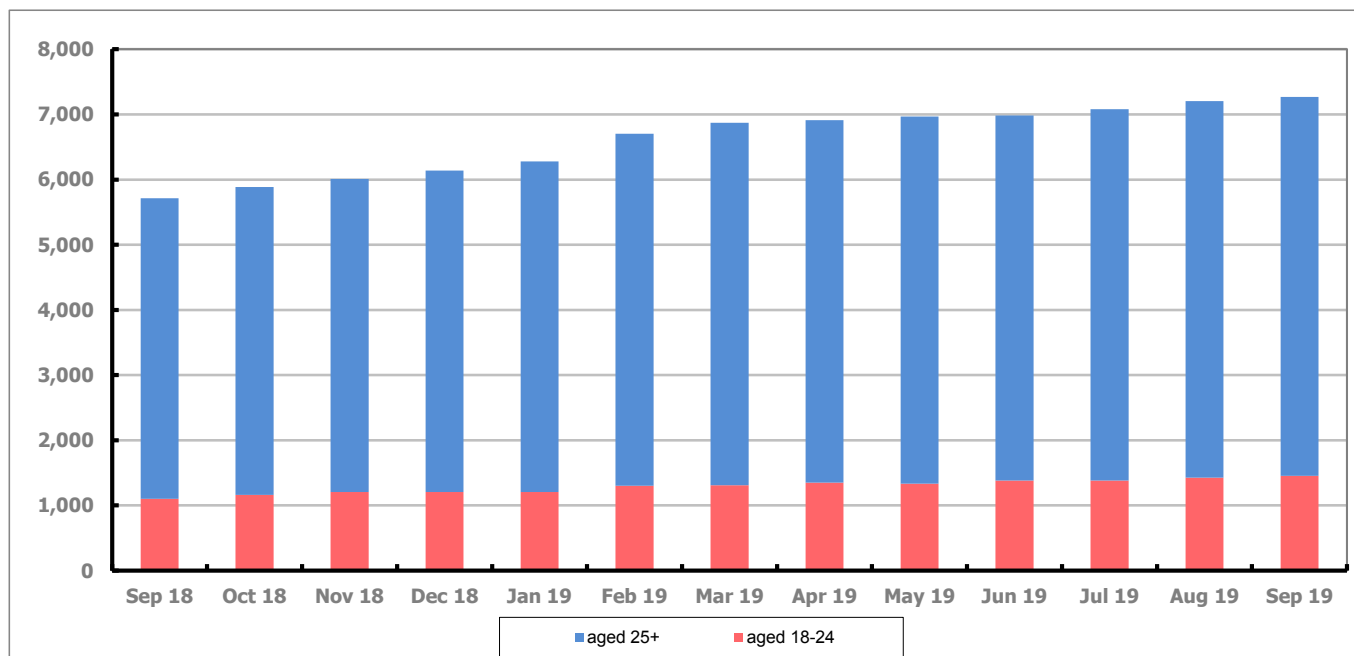


Figure 15 shows that in September 2019, 1,455 people aged 18-24 were claiming Job Seekers Allowance and Universal Credit who were not in work in Gloucestershire, this represents 19.9% of total working age claimants.

PART 7: YOUNG PEOPLE NOT IN EDUCATION, EMPLOYMENT OR TRAINING (NEET) IN GLOUCESTERSHIRE

Data provided by Gloucestershire Youth Support Team on the situation of young people (16-18) in Gloucestershire who are not in education, employment or formal training.

Gloucestershire Youth Support Team is required to report performance with the 16-18 age range against nationally defined criteria for counting the NEET group. The NEET group includes young people actively seeking education, employment or training as well as those young people who are either not yet ready or who are unable to access these opportunities because of their personal circumstances. The figures quoted below include young people in both of these categories.

Summary

At the end of September 2019 there were 346 young people aged 16-18 not in education, employment or training in Gloucestershire and this figure translates into an adjusted (*) 16-18 NEET population of 1.94%. The total number of NEET young people increased by 20 in September 2019 compared to August 2019, four districts saw an increase in their figures and two districts saw a decrease in their figure.

Total NEET Group by District Area

September 2019 NEET data

	Cheltenham	Cotswold	Forest	Gloucester	Stroud	Tewkesbury	Total
Total NEET	63	28	52	105	53	45	346
Cohort	3150	2468	2397	4288	3701	2617	18621
% NEET	2.00	1.13	2.17	2.45	1.43	1.72	1.94*

If you would like to receive any further information on Gloucestershire's NEET strategy then please contact Lynne.Speak@Prospects.co.uk or telephone 07900 391182.

(*) Adjustment includes a proportion of young people aged 16-18 whose outcomes are not known to Gloucestershire Youth Support Team.