

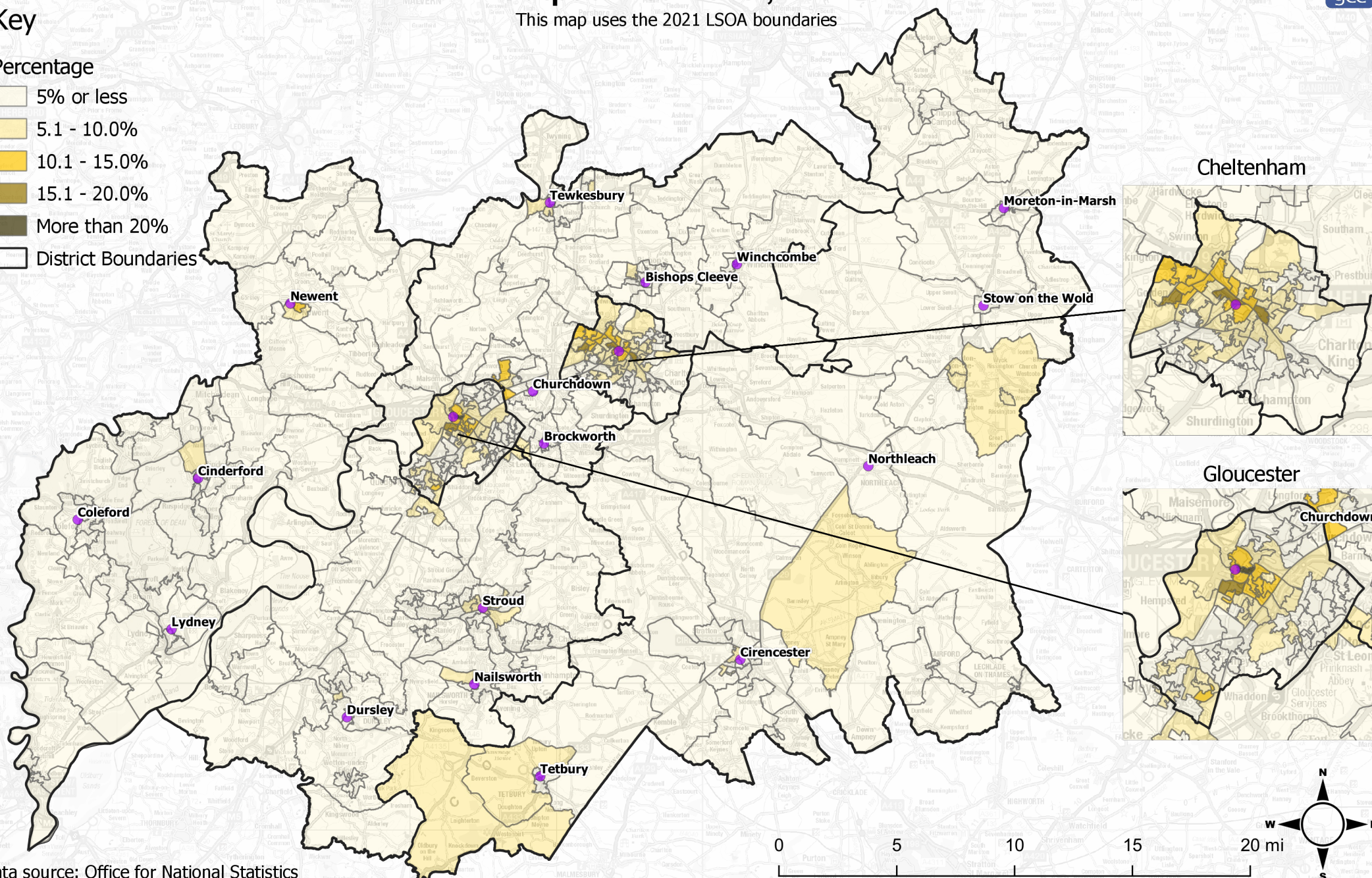
Percentage of the population who identify as “Other White” at Lower Super Output Area Level, 2021

This map uses the 2021 LSOA boundaries

Key

Percentage

- 5% or less
- 5.1 - 10.0%
- 10.1 - 15.0%
- 15.1 - 20.0%
- More than 20%
- District Boundaries



Data source: Office for National Statistics