

National and local data and context

Laura Berry

Senior Data Analyst
Education Data Hub

Mail: EducationDataHub@Gloucestershire.gov.uk

National and local data and context

1. The local picture

- i. B2B data sharing*
- ii. Pupils with 10+ consecutive days unauthorised absence*
- iii. Amended (Part-time) timetables*
- iv. Penalty Notices and Legal interventions*

2. The recent picture

- i. WONDE data sharing*

3. The published picture

4. Creating tables

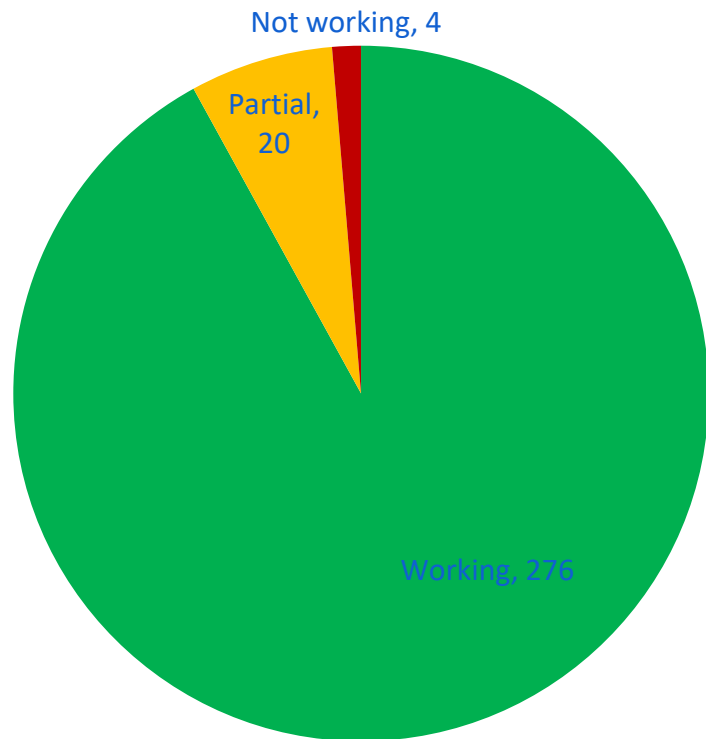
The local picture



The majority of schools are able to share their attendance records with the LA automatically...

...this covers approximately 95% of pupils in the county...

...and allows the LA to view recent attendance data – 92% of schools for Autumn term 1



The local picture

Pupils Missing 10 or more consecutive school days due to unauthorised absence

Number of schools with pupils identified with 10+ consecutive days unauthorised absence:

(previous whole academic years, current academic Autumn term 1 only)

	2021/22	% of all	2022/23	% of all	2023/24	% of all
Primary	155	63.5%	175	71.7%	69	28.3%
Secondary	33	80.5%	34	82.9%	33	80.5%
Total (inc spec & APS)	196	65.3%	222	74.0%	110	36.7%

Number of Pupils in schools identified with 10+ consecutive days unauthorised absence:

(previous whole academic years, current academic year Autumn term 1 only)

	2021/22	% of NOR	2022/23	% of NOR	2023/24	% of NOR
Primary	672	1.4%	726	1.5%	112	0.2%
Secondary	509	1.2%	813	1.9%	240	0.6%
Total (inc spec & APS)	1241	1.4%	1621	1.8%	367	0.4%



The local picture

Amended timetables

Number of Reports of Amended Timetables: (previous whole academic years, current academic year Autumn Term 1 only)						
	2021/22	% of NOR	2022/23	% of NOR	2023/24	% of NOR
Primary						
Total	331	0.7%	456	1.0%	161	0.3%
Reduced Hours	296	0.6%	413	0.9%	156	0.3%
Alternative Providers	35	0.1%	43	0.1%	5	0.0%
Secondary						
Total	497	1.2%	775	1.8%	181	0.4%
Reduced Hours	347	0.8%	591	1.4%	98	0.2%
Alternative Providers	150	0.4%	184	0.4%	83	0.2%
Total (inc Spec & APS)						
Total	942	1.0%	1268	1.4%	344	0.4%
Reduced Hours	726	0.8%	1032	1.1%	254	0.3%
Alternative Providers	216	0.2%	236	0.3%	90	0.1%

Reasons for Reduced hours timetables (previous whole academic years, current academic year to date)			
	2021/22	2022/23	2023/24
Medical Needs: Mental health	210	66	16
Medical Needs: Physical health	85	101	20
Social Emotional Mental Health Needs	220	481	115
Phased return following long-term absence	76	134	25
Other - please state in notes	113	153	37
Contracted Flex-schooling	8	20	4
Undertaking Needs Assessment	2	33	27
AIM recommendation	1	18	9
Behaviour	9	24	1
SEMH	1	0	0
No reason stated	1	2	0
TOTAL	726	1032	254

324
individuals

173 as at end
Term 1

30% with
EHCP

36% SEMH,
36% SLCN



The local picture

Penalty Notices

Outcomes of PN's requested / issued			
(whole academic years and current academic year as at end Autumn term 1)			
	2021/22	2022/23	2023/24
Requested	893	2370	594
Total Issued	707	1940	540
% issued	79.2%	81.9%	90.9%
Paid	548	1536	306
Withdrawn	154	144	18
Unpaid - Prosecuted	2	15	0
Unresolved	3	147	77
% paid	77.5%	83.4%	80.3%

England: 47 PN's issued per 1,000 pupils in 2018/19
21 in Gloucestershire

England: 6 PN's issued per 1,000 pupils in 2020/21
2 in Gloucestershire

England: 30 PN's issued per 1,000 pupils in 2021/22
9 in Gloucestershire

England: unknown number issued 2022/23
22 per 1,000 pupils in Gloucestershire



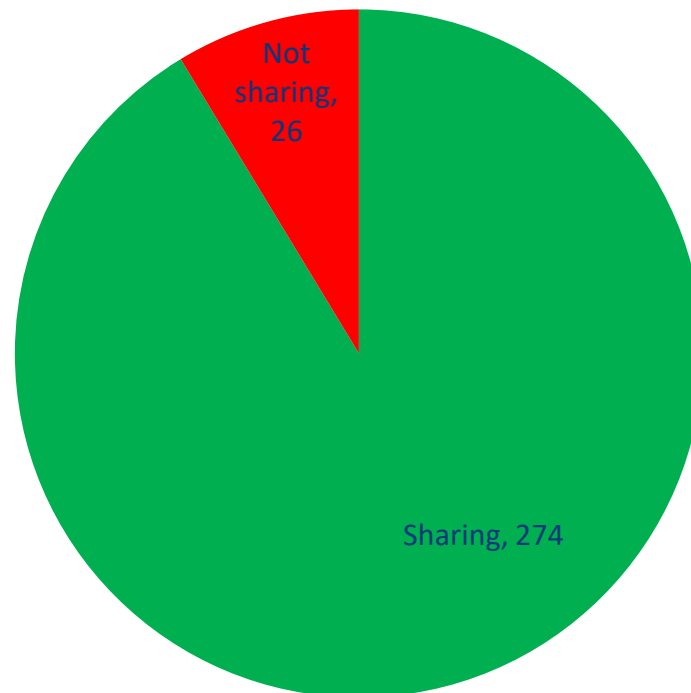
DfE's automated attendance (daily) data collection



The majority of schools share their attendance records with the DfE automatically...

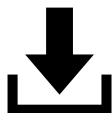
...this covers approximately 90% of pupils in the county...

...and allows the school / DfE / LA to view recent attendance data – 91% of schools for Autumn term 1



DfE's automated attendance (daily) data collection

[View your education data](#) – export reports



Schools have the ability to download data from the VYED portal

Export to CSV or Excel type files

Allows further analysis of data and production of more dynamic reports for SLT / Governors

End of term snapshot of school attendance in Gloucestershire for Academic Year 2023/34							Autumn Term1	
	No. signed up	% of schools	No. Pupils	Attendance %	PA %	PA Number	SA %	SA Number
Primary	225	92.2%	44,408	95.3%	14.62%	6,492	0.64%	285
Secondary	38	92.7%	36,194	92.4%	21.77%	7,881	2.42%	877
Special	11	91.7%	1,508	89.9%	29.77%	449	4.77%	72
APS	0	0.0%	n/a	n/a	n/a	n/a	n/a	n/a
TOTAL	274	91.3%	82,110	93.9%	18.05%	14,822	1.50%	1,234
source: View Your Education Data portal, data from schools sharing their data with DfE via WONDE as at 01/11/2023								



DfE's automated attendance (daily) data collection

Where to find more...

Fortnightly data

[Pupil attendance in schools, Week 21 2023 – Explore education statistics – GOV.UK \(explore-education-statistics.service.gov.uk/\)](https://explore-education-statistics.service.gov.uk/)

- National headlines
- Ability to Create own tables i.e. National / Regional / Local Authority (including by Primary / Secondary / Special),
National reasons for absence (by Primary / Secondary / Special)
- Latest week, term and academic year to date possible
- Download data to include as comparatives in own reports

Headline facts and figures - 2023

Overall absence rate

8.9%

during week commencing 22 May 2023

Authorised absence rate

5.5%

during week commencing 22 May 2023

Unauthorised absence rate

3.4%

during week commencing 22 May 2023

Overall absence rate

7.5%

academic year to date

Authorised absence rate

5.1%

academic year to date

Unauthorised absence rate

2.3%

academic year to date

Persistent absence rate

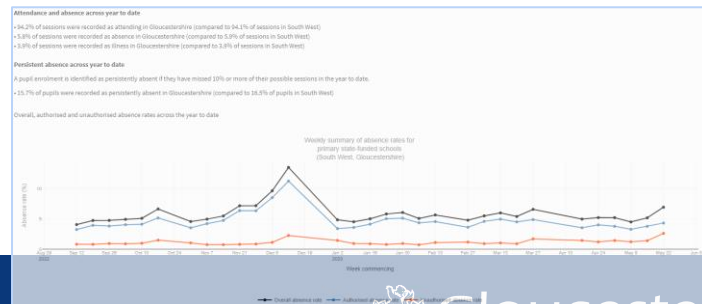
22.1%

academic year to date

Pupil Attendance dashboard

<https://department-for-education.shinyapps.io/pupil-attendance-in-schools/>

- As above but displayed graphically
- Includes easier to read coverage (78% of all schools sharing)
- Easier to filter to view on screen for school type, geographic etc
- Take snips of charts to include as comparatives in own reports



Gloucestershire
COUNTY COUNCIL

DfE's automated attendance (daily) data collection

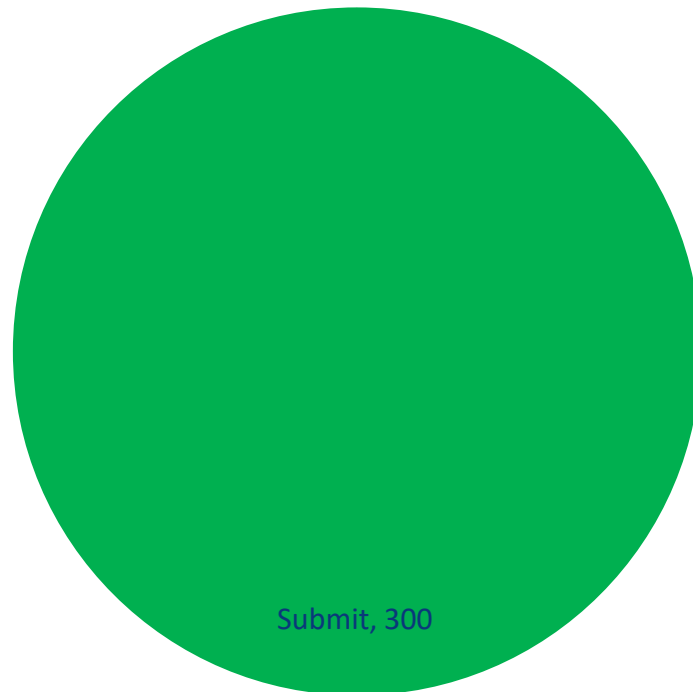


All schools share their attendance records with the DfE via the school census statutory return...

...covers 100% of pupils in the county...

...and allows the school / DfE / LA to view and compare attendance data – latest Spring term 2023

Don't submit, 0



Submit, 300



Latest published data

Availability of published data

School-level absence (with reasons) and Persistent Absentee numbers

...aggregated to:

- Phase and District-level*
- Phase and LA-level*
- Phase and regional-level*
- Phase and National*

Autumn Term collected January census, published **May**

Autumn and Spring terms collected May census, published **October**

Whole academic year collected October census, published **March**

Latest published data

Overall absence and Persistent Absence (PA) rates
(Primary Autumn & Spring terms):

	2017/18	2018/19	2020/21	2021/22	2022/23
Gloucestershire absence %	4.1%	3.8%	2.9%	6.2%	5.7%
England absence %	4.2%	3.9%	3.3%	6.2%	6.0%
Gloucestershire PA %	9.1%	7.6%	6.8%	17.2%	15.7%
England PA %	9.6%	8.4%	8.1%	18.2%	17.3%
Gloucestershire SA %	0.3%	0.3%	0.5%	0.5%	0.6%
England SA %	0.4%	0.4%	0.8%	0.6%	0.7%

Latest published data

Overall absence and Persistent Absence (PA) rates
(Secondary Autumn & Spring terms):

	2017/18	2018/19	2020/21	2021/22	2022/23
Gloucestershire absence %	5.4%	5.0%	4.1%	8.4%	8.6%
England absence %	5.4%	5.2%	4.6%	8.6%	8.7%
Gloucestershire PA %	13.7%	12.3%	10.6%	25.3%	24.7%
England PA %	13.6%	12.7%	11.7%	26.7%	25.2%
Gloucestershire SA %	1.0%	1.1%	1.2%	2.6%	3.0%
England SA %	1.1%	1.2%	1.3%	2.5%	3.1%

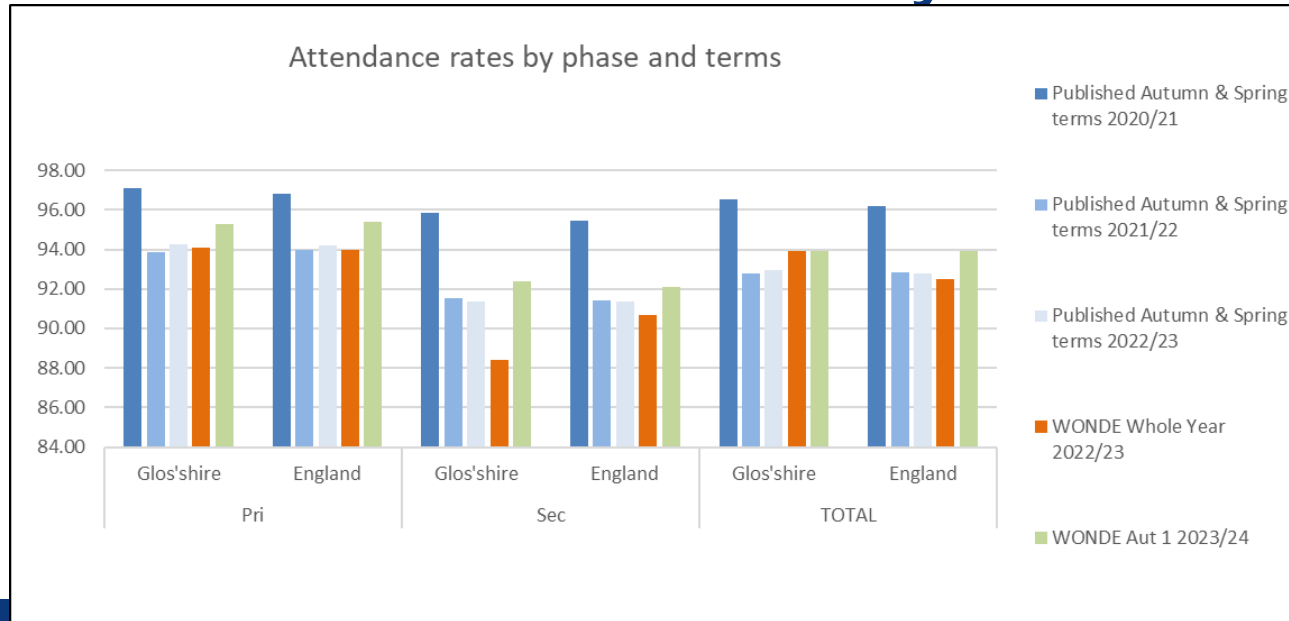
Latest published data

Overall absence and Persistent Absence (PA) rates
(Special Autumn & Spring terms):

	2017/18	2018/19	2020/21	2021/22	2022/23
Gloucestershire absence %	8.0%	8.9%	17.6%	12.2%	12.8%
England absence %	10.3%	10.1%	17.2%	13.2%	13.2%
Gloucestershire PA %	24.8%	25.4%	57.4%	39.3%	37.7%
England PA %	30.1%	28.5%	49.4%	40.2%	39.1%
Gloucestershire SA %	1.8%	3.1%	5.6%	3.8%	5.2%
England SA %	4.2%	4.4%	6.4%	5.6%	6.1%

Latest published data

Absence rates – an early indication?



Latest published data

Find data and create your own tables

[Statistics: pupil absence - GOV.UK \(www.gov.uk\)](#)

Lists all the available termly statistics, and statistics guidance

[Pupil absence in schools in England: autumn 2022 and spring 2023 - GOV.UK \(www.gov.uk\)](#) *When you click into the term you want, you can see the national headlines*

[Create your own tables, Table Tool – Explore education statistics – GOV.UK \(explore-education-statistics.service.gov.uk\)](#)

Choose the Explore data and files option to Create your own tables



Latest published data

Create your own tables:

[Create your own tables, Table Tool – Explore education statistics – GOV.UK \(explore-education-statistics.service.gov.uk\)](https://explore-education-statistics.service.gov.uk)

GOV.UK Explore education statistics

BETA This is a new service - your feedback will help us to improve it.

Home > Create your own tables

Table Tool

Create your own tables

Choose the data and area of interest you want to explore and then use filters to create your table. Once you've created your table, you can download the data it contains for your own offline analysis.

STEP 1 Publication Pupil absence in schools in England [Change publication](#)

STEP 2 Data set Absence rates by geographic level - autumn term [Change data set](#)

STEP 3 Local authority Gloucestershire [Edit locations](#)

National England

STEP 4 Time period 2018/19 Autumn term to 2022/23 Autumn term [Edit time period](#)

STEP 5 Indicators Percentage of severe absentees (50% or more missed) [Edit filters](#)

School type

Total
Special
State-funded primary
State-funded secondary

STEP 6: Explore data

THIS IS THE LATEST DATA

Some rows and columns are not shown in this table as the data does not exist in the underlying file.

[Move and reorder table headers](#)

Percentage of severe absentees (50% or more missed) for 'Absence rates by geographic level - autumn term' for Special, State-funded primary and State-funded secondary in England and Gloucestershire between 2018/19 Autumn term and 2022/23 Autumn term

	England					South West				
						Gloucestershire				
	2018/19 Autumn term	2019/20 Autumn term	2020/21 Autumn term	2021/22 Autumn term	2022/23 Autumn term	2018/19 Autumn term	2019/20 Autumn term	2020/21 Autumn term	2021/22 Autumn term	2022/23 Autumn term
Total	0.7%	0.9%	1.3%	1.4%	1.7%	0.7%	0.7%	1.1%	1.3%	1.6%
Special	4.1%	4.4%	5.2%	5.5%	5.8%	2.6%	3.4%	3.4%	3.3%	5.5%
State-funded primary	0.4%	0.4%	0.9%	0.6%	0.7%	0.3%	0.3%	0.6%	0.5%	0.6%
State-funded secondary	1.1%	1.3%	1.7%	2.1%	2.8%	1.0%	1.2%	1.6%	2.1%	2.6%

Footnotes

1. Total includes state-funded primary, secondary and special schools. Data for special schools is available from 2016/17 to present.

Save table

[Generate shareable link](#)

[Download Table](#)



Gloucestershire
COUNTY COUNCIL

Effective reporting and analysis

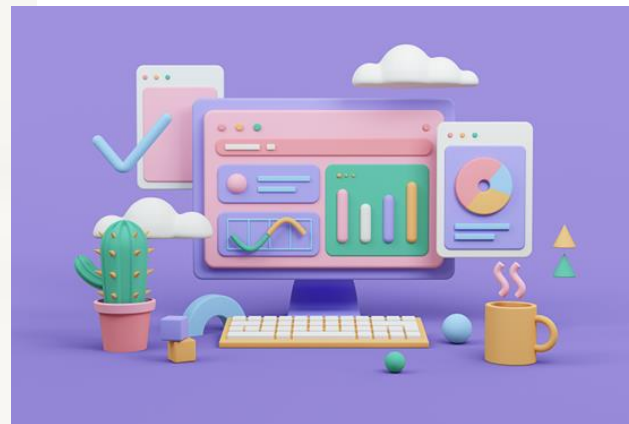
“Regularly analyse attendance and absence data to identify pupils or cohorts that require support with their attendance and put effective strategies in place”

But...

- Avoid over-interpreting analysis of small subgroups of pupils
- Remember that analysis must be proportionate
- Consider what is the minimum information the board requires... time spent collecting and analysing data can be burdensome, placing additional workloads on individuals

Effective reporting and analysis

- Ensure registers are always up to date
- Check if your B2B / WONDE data sharing is working
- Sign up to WONDE and utilise the system
- Familiarise yourself with the DfE publications and available datasets (create a table!)
- Contact Inclusion Officers for advice and support on managing absence and promoting attendance
- Contact your linked Inclusion Officer or Data Hub if you have any data-related questions or requests



Thank you!

