

# Unemployment Bulletin

Issue 126 January 2019

## Contents

<b>Part 1: Summary</b> A summary of unemployment data at district, County, regional and national level	<b>1</b>
<b>Part 2: County</b> Unemployment figures for the County compared to the South West and the rest of the UK	<b>3</b>
<b>Part 3: Districts</b> A comparative break down of unemployment figures by district	<b>4</b>
<b>Part 4: Wards</b> Further breakdown of unemployment figures by ward:	
Cheltenham	6
Cotswolds	8
Forest of Dean	10
Gloucester	12
Stroud	14
Tewkesbury	16
<b>Part 5: Map</b> Distribution of claimant rate across Gloucestershire	<b>18</b>
<b>Part 6: Youth Unemployment</b> Unemployment data for the 18-24 year old age group	<b>20</b>
<b>Part 7: Young People</b> Data about Young People Not in Education, Employment or Training (NEET)	<b>21</b>

The Claimant Count is a measure of the number of people who are unemployed and claiming benefits. From 1996 until the recent introduction of Universal Credit, this was based on the number of people claiming Jobseeker's Allowance. However, since its introduction some unemployment benefit claimants will be claiming Universal Credit instead. **To reflect this change, the Claimant Count has been expanded to include people claiming Jobseeker's Allowance plus those who claim Universal Credit and who are searching for work.**

Gloucestershire is in the process of transitioning to full Universal Credit. This means a broader span of claimants will be required to look for work than previously under Jobseekers Allowance. As more people are brought within the coverage of Universal Credit, the Claimant Count is set to rise noticeably over time. This will happen irrespective of how the economy performs and is a feature of the design of Universal Credit which brings additional groups of people into 'Searching for Work' conditionality (and therefore the Claimant Count), to help encourage and support these claimants into work.

For more information about Universal Credit please see the [ONS website](https://www.ons.gov.uk/universal-credit).

## INTRODUCTION

The Unemployment Bulletin provides a monthly update on unemployment data for Gloucestershire, the South West region and the United Kingdom. It is produced by the Data & Analysis Team in the County Council's Planning, Performance and Change function. The data are sourced from the Office for National Statistics via Nomis ([www.nomis.co.uk](http://www.nomis.co.uk)). All data are rounded to the nearest 5 and may not precisely add to the sum of the number of people claiming JSA, and the number of people claiming Universal Credit required to seek work, due to independent rounding.

## PART 1: SUMMARY

The claimant rate in Gloucestershire was 1.7% in January 2019. The South West rate remained at 1.8% but the UK rate increased to 2.4%. Gloucestershire's rate was 0.1% lower than the South West average of 1.8%, and 0.7% lower than the UK average of 2.4%.

The claimant count in Gloucestershire in January 2019 increased by **185 people**. The amount of people claiming in January 2019 was 3.0% higher than the number in December 2018. This compares to a 4.2% increase in the South West and a 4.3% increase for the UK.

Produced by:

**Data & Analysis Team**  
Planning, Performance and Change  
Gloucestershire County Council  
February 2019

## DISTRICTS AT A GLANCE

At a glance unemployment information grouped by district. Includes:

**Claim count:** Total number of people claiming Job Seekers Allowance and Universal Credit who are not in work in January 2019

**Compared to last month:** How much larger/smaller January's claimant count is compared to December expressed as a %

**Claimant rate:** The % of working age population claiming Job Seekers Allowance and Universal Credit who are not in work in January 2019

**Highest claiming ward:** The ward with the highest claim count in that district and the rate

### CHELTEMHAM BOROUGH

Claim count:	1,245
Compared to last month:	5.1%
Claimant rate:	1.7%
Highest claiming ward	Hester's Way (4.0%)

### GLOUCESTER CITY

Claim count:	1,915
Compared to last month:	2.7%
Claimant rate:	2.3%
Highest claiming wards	Westgate (4.7%)

### COTSWOLD DISTRICT

Claim count:	620
Compared to last month:	4.2%
Claimant rate:	1.2%
Highest claiming ward	Watermoor (3.2%)

### STROUD DISTRICT

Claim count:	800
Compared to last month:	0.0%
Claimant rate:	1.1%
Highest claiming wards	Slade (3.0%)

### FOREST OF DEAN

Claim count:	1,020
Compared to last month:	3.6%
Claimant rate:	2.0%
Highest claiming ward	Lydney East (4.0%)

### TEWKESBURY BOROUGH

Claim count:	745
Compared to last month:	0.7%
Claimant rate:	1.4%
Highest claiming ward	Tewkesbury Prior's Park (3.6%)

## PART 2: UK, SW AND GLOUCESTERSHIRE INDICATORS

The unemployment situation in Gloucestershire compared to the South West and the UK.

### Claimant Rate

Figure 1: Claimant Rate for Gloucestershire, the South West and UK over the past year

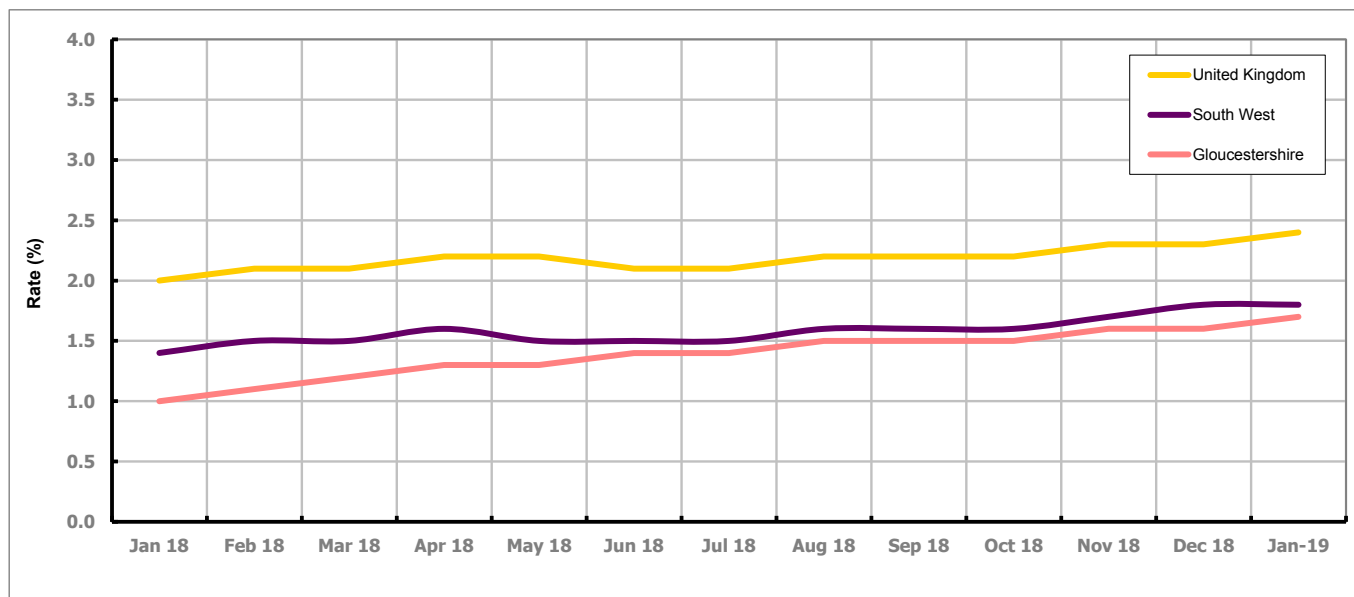


Figure 1 shows the claimant rate for Gloucestershire at 1.7% in January 2019. The Gloucestershire rate has been lower than the South West average since December 2015, with the exception of April and May 2016 when it was the same. It has been persistently lower by approximately 0.8% against the UK average.

### Claimant Count

Table 1: Analysis of UK, South West and Gloucestershire Claimant Counts

Area	Claimant Count in January 2019	% change on December 2018	Consecutive months increasing
UK	1,009,065	4.3%	6
South West	62,280	4.2%	6
Gloucestershire	6,350	3.0%	7

Table 1 shows that in January 2019, the number of claimants in Gloucestershire was 3.0% higher than the number in December 2018.

## PART 3: LOCAL AUTHORITY DISTRICT ANALYSIS

### Claimant Rate and Claimant Count

Figure 2: Claimant Rate (%) across Gloucestershire - January 2019

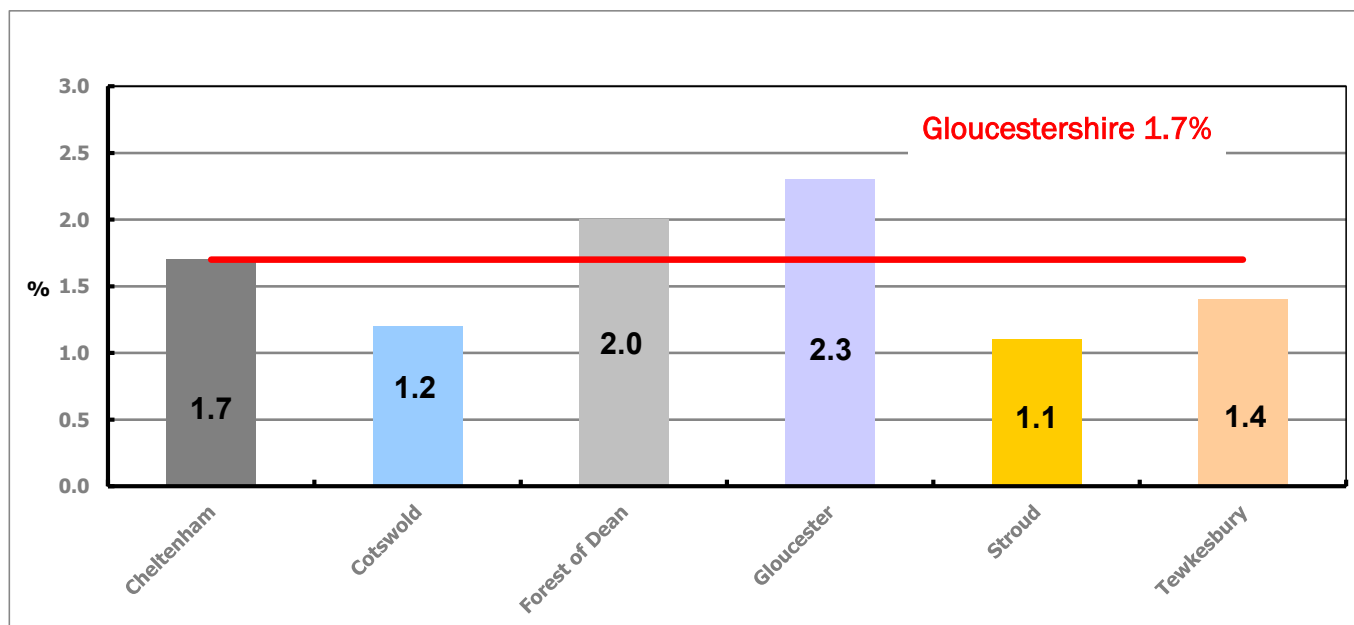


Figure 2 shows the claimant rate for January 2019 in Gloucestershire. Between December 2018 and January 2019, the rate increased in Cheltenham and the Forest of Dean, whereas the rates in all other districts stayed the same.

Table 2: Analysis of Gloucestershire and District Claimant Counts

Total	Jan 19 Number	Jan 19 Rate	Dec 18 Number	Dec 18 Rate	Monthly change	% monthly change	Monthly change of rate
<b>Gloucestershire</b>	6,350	1.7	6,165	1.6	185	3.0%	0.1
Cheltenham	1,245	1.7	1,185	1.6	60	5.1%	0.1
Cotswold	620	1.2	595	1.2	25	4.2%	0.0
Forest of Dean	1,020	2.0	985	1.9	35	3.6%	0.1
Gloucester	1,915	2.3	1,865	2.3	50	2.7%	0.0
Stroud	800	1.1	800	1.1	0	0.0%	0.0
Tewkesbury	745	1.4	740	1.4	5	0.7%	0.0

Table 2 shows the change in the claimant count in January 2019 compared to December 2018. All districts saw an increase in the number of claimants, except Stroud which stayed the same.

Table 3: Analysis of Male Gloucestershire and District Claimant Counts

Male	Jan 19 Number	Jan 19 Rate	Dec 18 Number	Dec 18 Rate	Monthly change	% monthly change	Monthly change of rate
<b>Gloucestershire</b>	3,715	2.0	3,580	1.9	135	3.8%	0.1
Cheltenham	765	2.1	725	2.0	40	5.5%	0.1
Cotswold	345	1.4	325	1.3	20	6.2%	0.1
Forest of Dean	600	2.4	565	2.2	35	6.2%	0.2
Gloucester	1,145	2.8	1,110	2.7	35	3.2%	0.1
Stroud	445	1.3	440	1.2	5	1.1%	0.1
Tewkesbury	415	1.6	420	1.6	-5	-1.2%	0.0

Table 3 shows the change in the male claimant count in January 2019 compared to December 2018. All districts saw an increase in the number of male claimants, except Tewkesbury which saw a decrease.

Table 4: Analysis of Female Gloucestershire and District Claimant Counts

Female	Jan 19 Number	Jan 19 Rate	Dec 18 Number	Dec 18 Rate	Monthly change	% monthly change	Monthly change of rate
<b>Gloucestershire</b>	2,635	1.4	2,585	1.3	50	1.9%	0.1
Cheltenham	480	1.3	460	1.2	20	4.3%	0.1
Cotswold	280	1.1	265	1.0	15	5.7%	0.1
Forest of Dean	420	1.6	420	1.6	0	0.0%	0.0
Gloucester	765	1.9	755	1.9	10	1.3%	0.0
Stroud	355	1.0	360	1.0	-5	-1.4%	0.0
Tewkesbury	330	1.2	320	1.2	10	3.1%	0.0

Table 4 shows the change in the female claimant count in January 2019 compared to December 2018. All districts saw an increase in the number of female claimants, except Stroud which saw a decrease, and the Forest of Dean which stayed the same.

## PART 4: LOCAL AUTHORITY DISTRICT AND WARD ANALYSIS

This section covers the six districts and a comparison of their constituent wards.

### 4.1 Cheltenham Borough

#### Claimant Rate and Claimant Count

Figure 3: Cheltenham Borough claimant rate over the last year

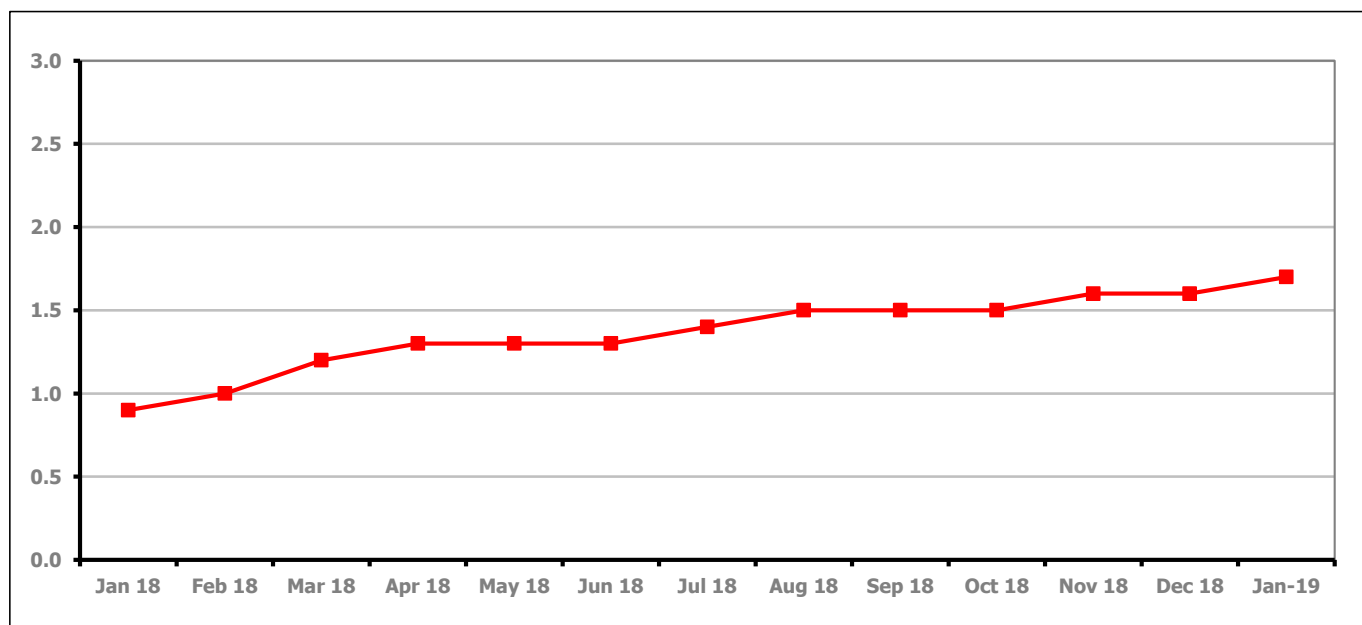


Figure 3 shows the claimant rate in Cheltenham increased in January 2019 to 1.7%.

Figure 4: Claimant rates across Cheltenham Borough wards - January 2019

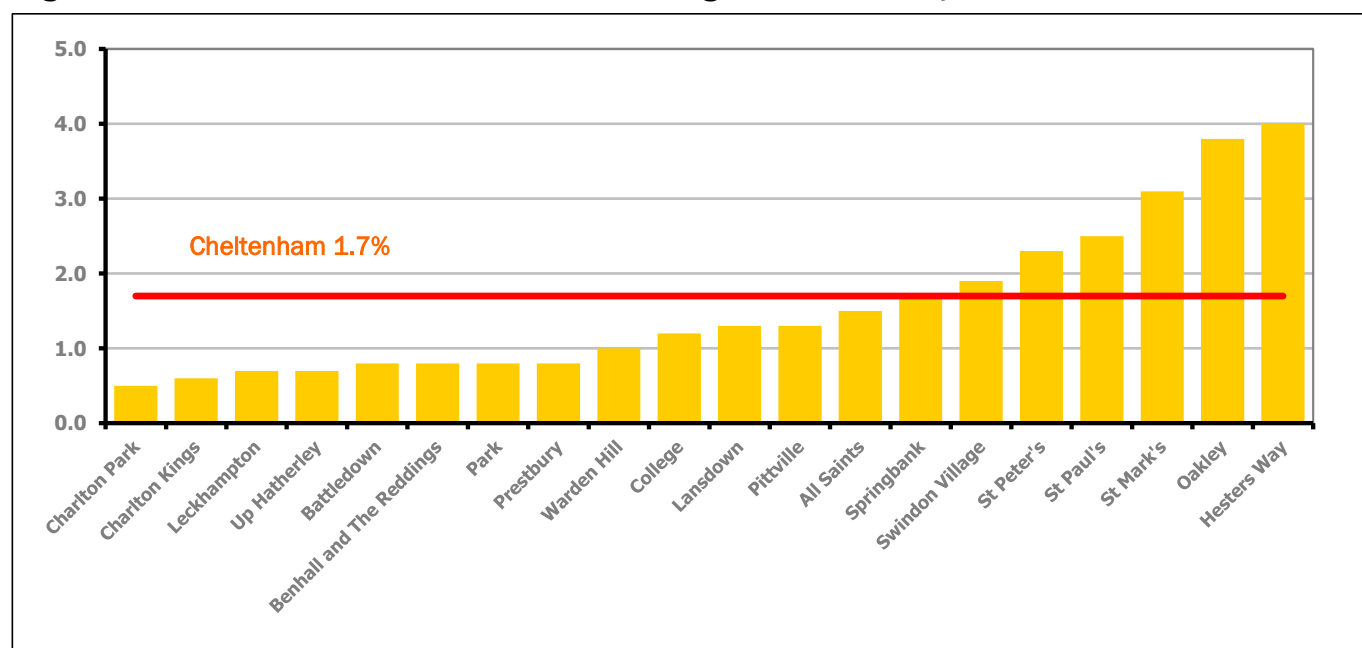


Figure 4 shows the claimant rates for Cheltenham Borough wards. The red line represents the average claimant rate across the Borough of 1.7%. Six wards lie above the average.

## PART 4: LOCAL AUTHORITY DISTRICT AND WARD ANALYSIS

### 4.1 Cheltenham Borough continued...

Table 5: Analysis of Claimant Count at Cheltenham Borough ward level - January 2019

District	Ward	Rate	Rank*
Cheltenham	Charlton Park	0.5	8
Cheltenham	Charlton Kings	0.6	11
Cheltenham	Leckhampton	0.7	21
Cheltenham	Up Hatherley	0.7	21
Cheltenham	Battledown	0.8	28
Cheltenham	Benhall and The Reddings	0.8	28
Cheltenham	Park	0.8	28
Cheltenham	Prestbury	0.8	28
Cheltenham	Warden Hill	1.0	48
Cheltenham	College	1.2	70
Cheltenham	Lansdown	1.3	78
Cheltenham	Pittville	1.3	78
Cheltenham	All Saints	1.5	94
Cheltenham	Springbank	1.7	106
Cheltenham	Swindon Village	1.9	113
Cheltenham	St Peter's	2.3	123
Cheltenham	St Paul's	2.5	126
Cheltenham	St Mark's	3.1	133
Cheltenham	Oakley	3.8	140
Cheltenham	Hesters Way	4.0	141

	lowest 10% of county
	first quartile of county
	second quartile of county
	third quartile of county
	fourth quartile of county
	highest 10% of county

\* 1 = "best" and 142 = "worst"

Table 5 shows overall claimant rates for Cheltenham Borough wards and their position relative to all wards in Gloucestershire.

## PART 4: LOCAL AUTHORITY DISTRICT AND WARD ANALYSIS

### 4.2 Cotswold District

#### Claimant Rate and Claimant Count

Figure 5: Cotswold District claimant rate over the last year

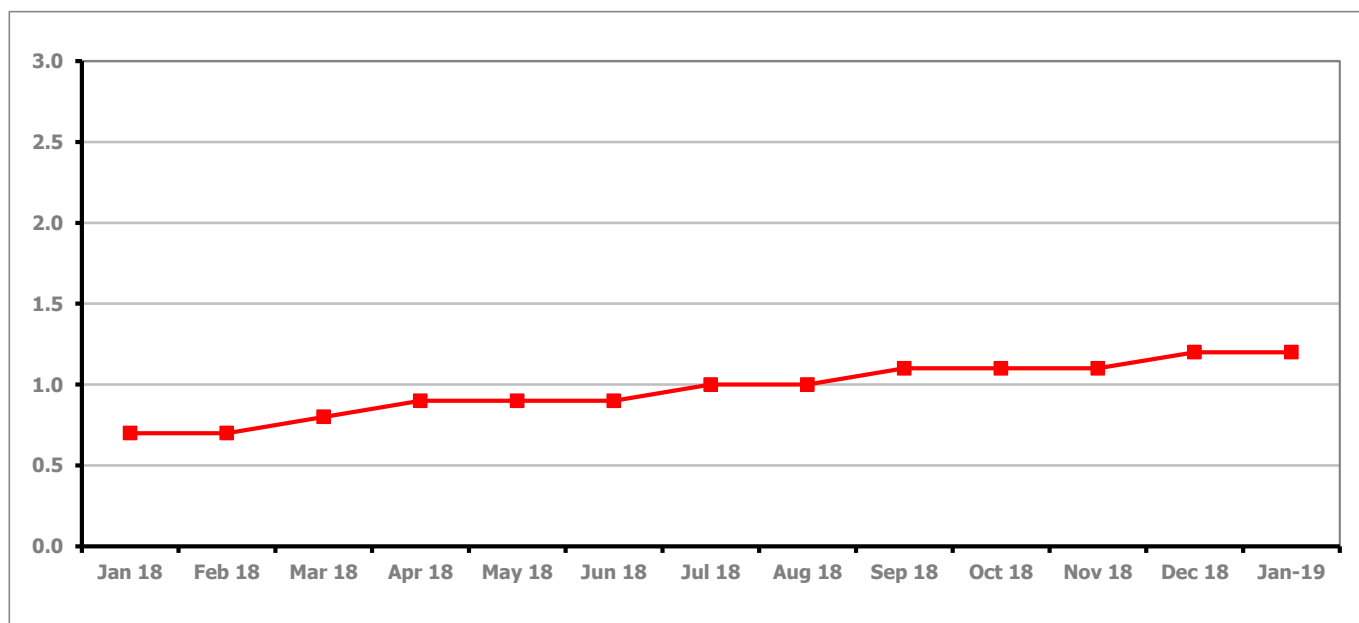


Figure 5 shows the claimant rate in Cotswold District stayed the same as last month at 1.2%.

Figure 6: Claimant rates across Cotswold District wards - January 2019

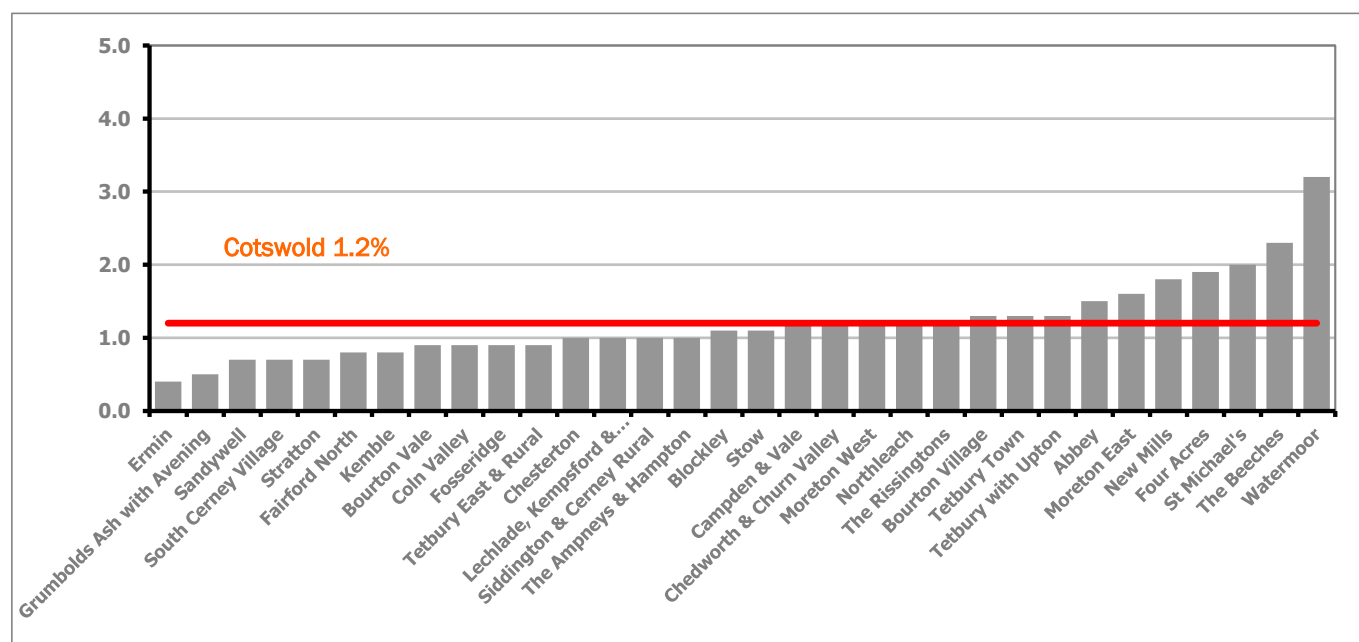


Figure 6 shows the claimant rates for Cotswold District wards. The red line represents the average claimant rate across the District of 1.2%. Ten wards lie above the average.



## PART 4: LOCAL AUTHORITY DISTRICT AND WARD ANALYSIS

### 4.2 Cotswold District continued...

Table 6: Analysis of Claimant Count at Cotswold District ward level - January 2019

District	Ward	Rate	Rank*
Cotswolds	Ermin	0.4	2
Cotswolds	Grumbolds Ash with Avening	0.5	8
Cotswolds	Sandywell	0.7	21
Cotswolds	South Cerney Village	0.7	21
Cotswolds	Stratton	0.7	21
Cotswolds	Fairford North	0.8	28
Cotswolds	Kemble	0.8	28
Cotswolds	Bourton Vale	0.9	38
Cotswolds	Coln Valley	0.9	38
Cotswolds	Fosseridge	0.9	38
Cotswolds	Tetbury East & Rural	0.9	38
Cotswolds	Chesterton	1.0	48
Cotswolds	Lechlade, Kempsford & Fairford South	1.0	48
Cotswolds	Siddington & Cerney Rural	1.0	48
Cotswolds	The Ampneys & Hampton	1.0	48
Cotswolds	Blockley	1.1	62
Cotswolds	Stow	1.1	62
Cotswolds	Campden & Vale	1.2	70
Cotswolds	Chedworth & Churn Valley	1.2	70
Cotswolds	Moreton West	1.2	70
Cotswolds	Northleach	1.2	70
Cotswolds	The Rissingtons	1.2	70
Cotswolds	Bourton Village	1.3	78
Cotswolds	Tetbury Town	1.3	78
Cotswolds	Tetbury with Upton	1.3	78
Cotswolds	Abbey	1.5	94
Cotswolds	Moreton East	1.6	99
Cotswolds	New Mills	1.8	110
Cotswolds	Four Acres	1.9	113
Cotswolds	St Michael's	2.0	117
Cotswolds	The Beeches	2.3	123
Cotswolds	Watermoor	3.2	134

	lowest 10% of county
	first quartile of county
	second quartile of county
	third quartile of county
	fourth quartile of county
	highest 10% of county

\* 1 = "best" and 142 = "worst"

Table 6 shows overall claimant rates for Cotswold District wards and their position relative to all wards in Gloucestershire.

## PART 4: LOCAL AUTHORITY DISTRICT AND WARD ANALYSIS

### 4.3 Forest of Dean District

#### Claimant Rate and Claimant Count

Figure 7: Forest of Dean District claimant rate over the last year

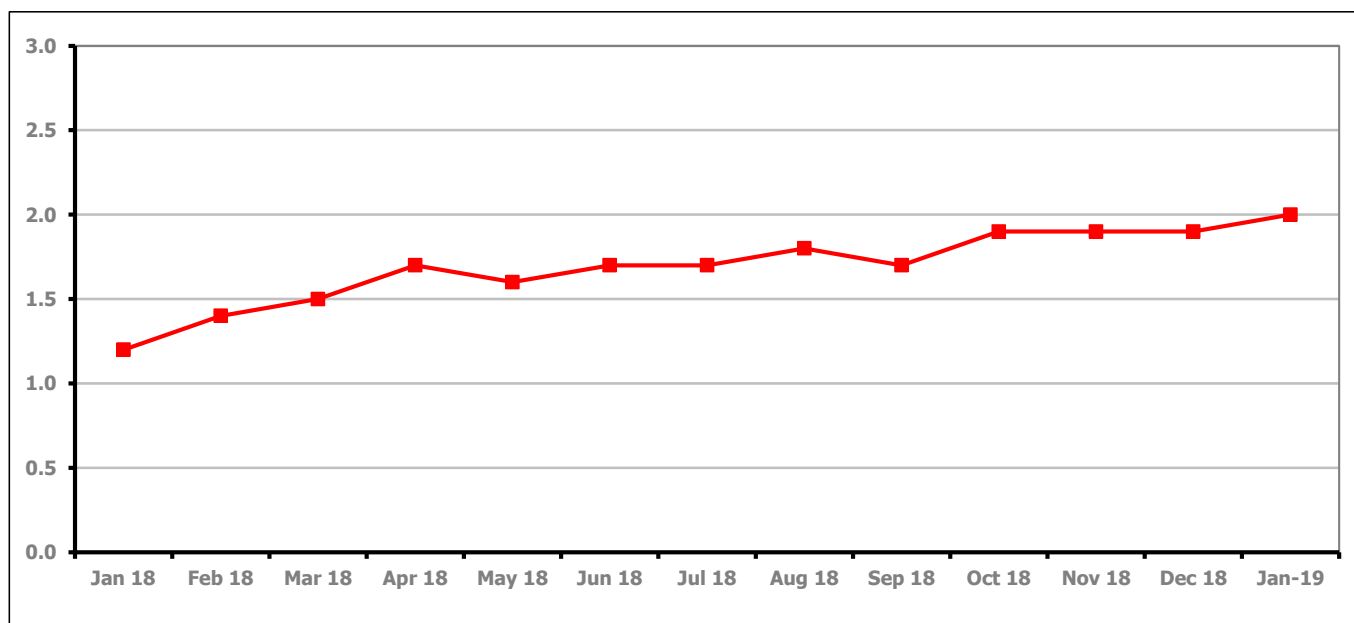


Figure 7 shows the claimant rate in the Forest of Dean increased in January 2019 to 2.0%.

Figure 8: Claimant rates across Forest of Dean District wards - January 2019

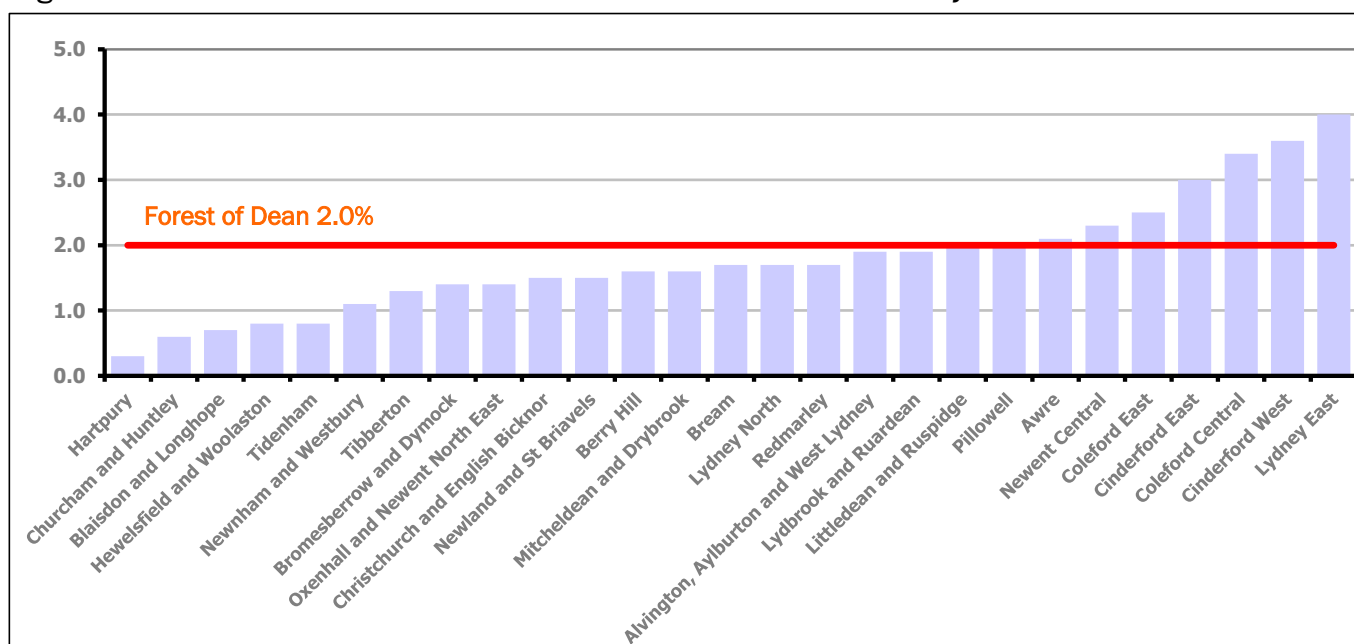


Figure 8 shows the claimant rates for the Forest of Dean District wards. The red line represents the average claimant rate across the District of 2.0%. Seven wards lie above the average.

## PART 4: LOCAL AUTHORITY DISTRICT AND WARD ANALYSIS

### 4.3 Forest of Dean District continued...

Table 7: Analysis of Claimant Count at Forest of Dean District ward level - January 2019

District	Ward	Rate	Rank*
Forest	Hartpury	0.3	1
Forest	Churcham and Huntley	0.6	11
Forest	Blaisdon and Longhope	0.7	21
Forest	Hewelsfield and Woolaston	0.8	28
Forest	Tidenham	0.8	28
Forest	Newnham and Westbury	1.1	62
Forest	Tibberton	1.3	78
Forest	Bromesberrow and Dymock	1.4	90
Forest	Oxenhall and Newent North East	1.4	90
Forest	Christchurch and English Bicknor	1.5	94
Forest	Newland and St Briavels	1.5	94
Forest	Berry Hill	1.6	99
Forest	Mitcheldean and Drybrook	1.6	99
Forest	Bream	1.7	106
Forest	Lydney North	1.7	106
Forest	Redmarley	1.7	106
Forest	Alvington, Aylburton and West Lydney	1.9	113
Forest	Lydbrook and Ruardean	1.9	113
Forest	Littledean and Ruspidge	2.0	117
Forest	Pillowell	2.0	117
Forest	Awre	2.1	120
Forest	Newent Central	2.3	123
Forest	Coleford East	2.5	126
Forest	Cinderford East	3.0	131
Forest	Coleford Central	3.4	136
Forest	Cinderford West	3.6	137
Forest	Lydney East	4.0	141

	lowest 10% of county
	first quartile of county
	second quartile of county
	third quartile of county
	fourth quartile of county
	highest 10% of county

\* 1 = "best" and 142 = "worst"

Table 7 shows overall claimant rates for the Forest of Dean District wards and their position relative to all wards in Gloucestershire.

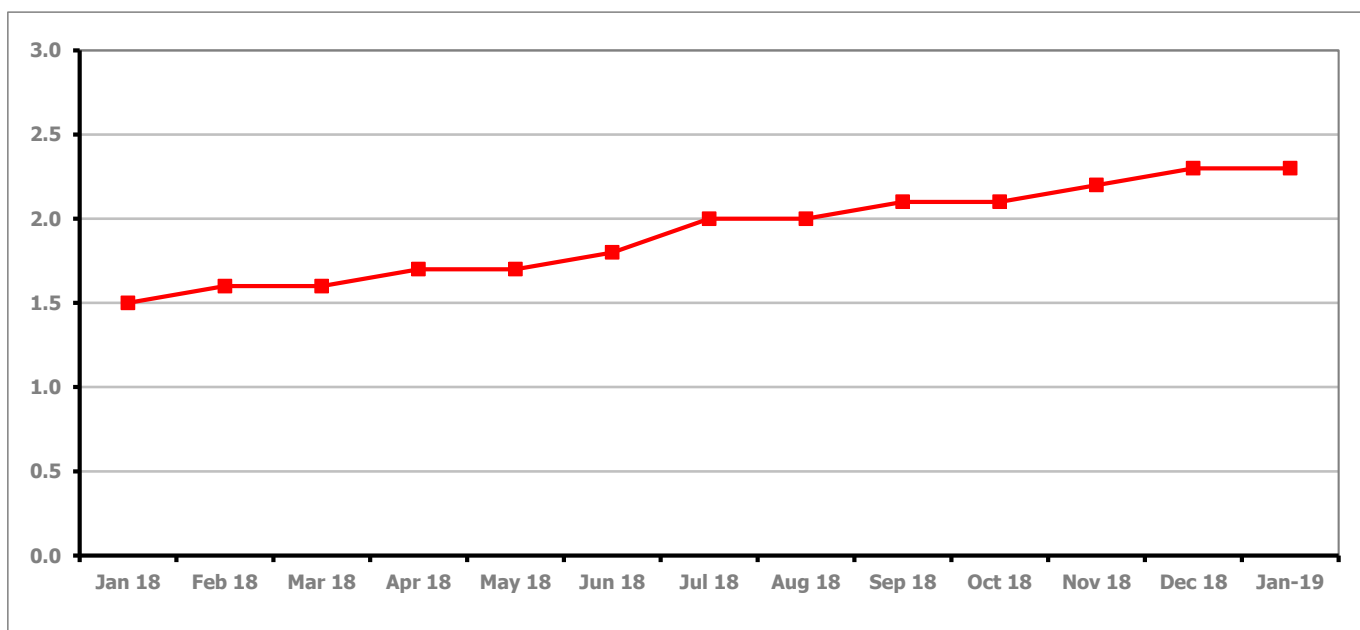
**PART 4: LOCAL AUTHORITY DISTRICT AND WARD ANALYSIS****4.4 Gloucester City****Claimant Rate and Claimant Count***Figure 9: Gloucester City claimant rate over the last year*

Figure 9 shows the claimant rate for Gloucester City stayed the same as last month at 2.3%

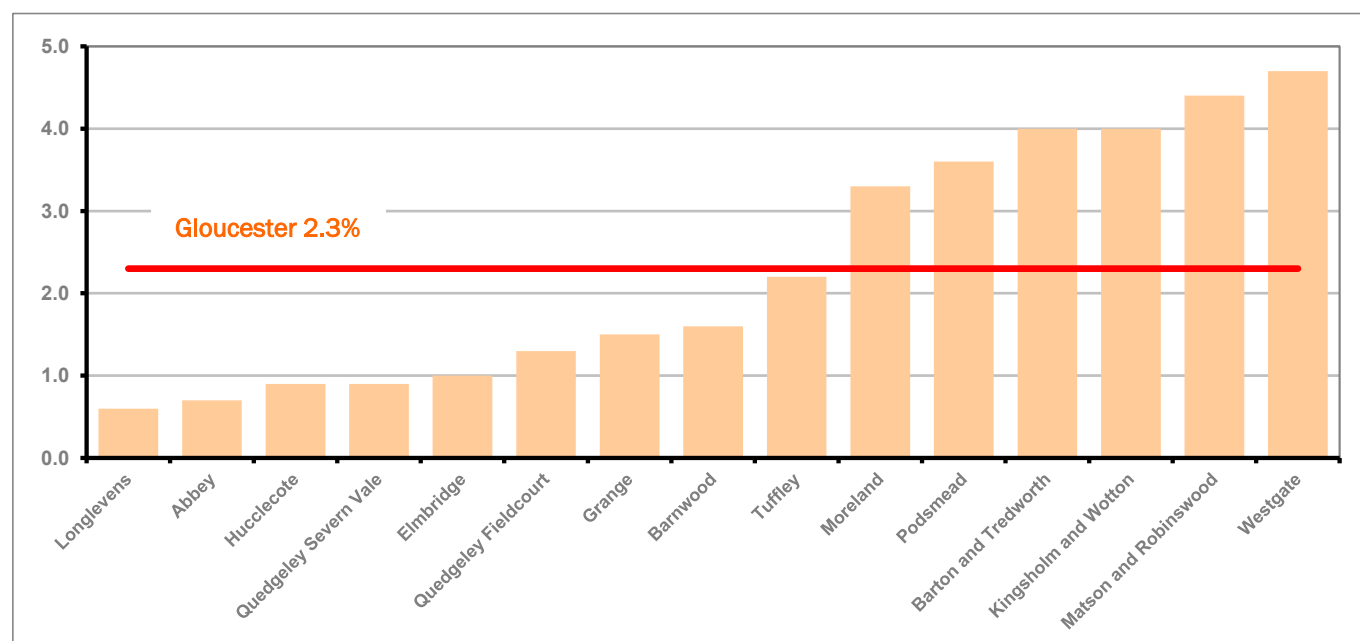
*Figure 10: Claimant rates across Gloucester City wards - January 2019*

Figure 10 shows the claimant rates for Gloucester City district wards. The red line represents the average claimant rate across the City of 2.3%. Six wards lie above the average.

## PART 4: LOCAL AUTHORITY DISTRICT AND WARD ANALYSIS

### 4.4 Gloucester City continued...

Table 8: Analysis of Claimant Count at Gloucester City ward level - January 2019

District	Ward	Rate	Rank*
Gloucester	Longlevens	0.6	11
Gloucester	Abbey	0.7	21
Gloucester	Hucclecote	0.9	38
Gloucester	Quedgeley Severn Vale	0.9	38
Gloucester	Elmbridge	1.0	48
Gloucester	Quedgeley Fieldcourt	1.3	78
Gloucester	Grange	1.5	94
Gloucester	Barnwood	1.6	99
Gloucester	Tuffley	2.2	122
Gloucester	Moreland	3.3	135
Gloucester	Podsmead	3.6	137
Gloucester	Barton and Tredworth	4.0	141
Gloucester	Kingsholm and Wotton	4.0	141
Gloucester	Matson and Robinswood	4.4	145
Gloucester	Westgate	4.7	146

	lowest 10% of county
	first quartile of county
	second quartile of county
	third quartile of county
	fourth quartile of county
	highest 10% of county

\* 1 = "best" and 142 = "worst"

Table 8 shows overall claimant rates for Gloucester City wards and their position relative to all wards in Gloucestershire.

## PART 4: LOCAL AUTHORITY DISTRICT AND WARD ANALYSIS

### 4.5 Stroud District

#### Claimant Rate and Claimant Count

Figure 11: Stroud District claimant rate over the last year

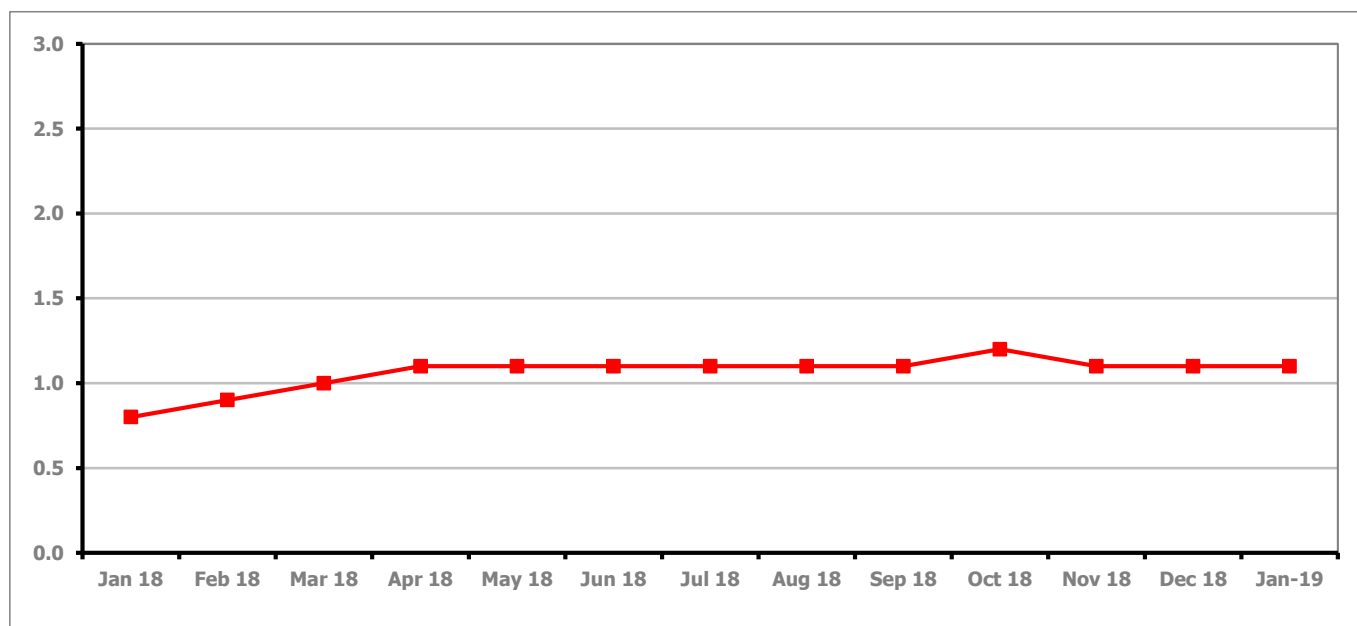


Figure 11 shows the claimant rate for Stroud stayed the same as last month at 1.1%.

Figure 12: Claimant rates across Stroud District wards - January 2019

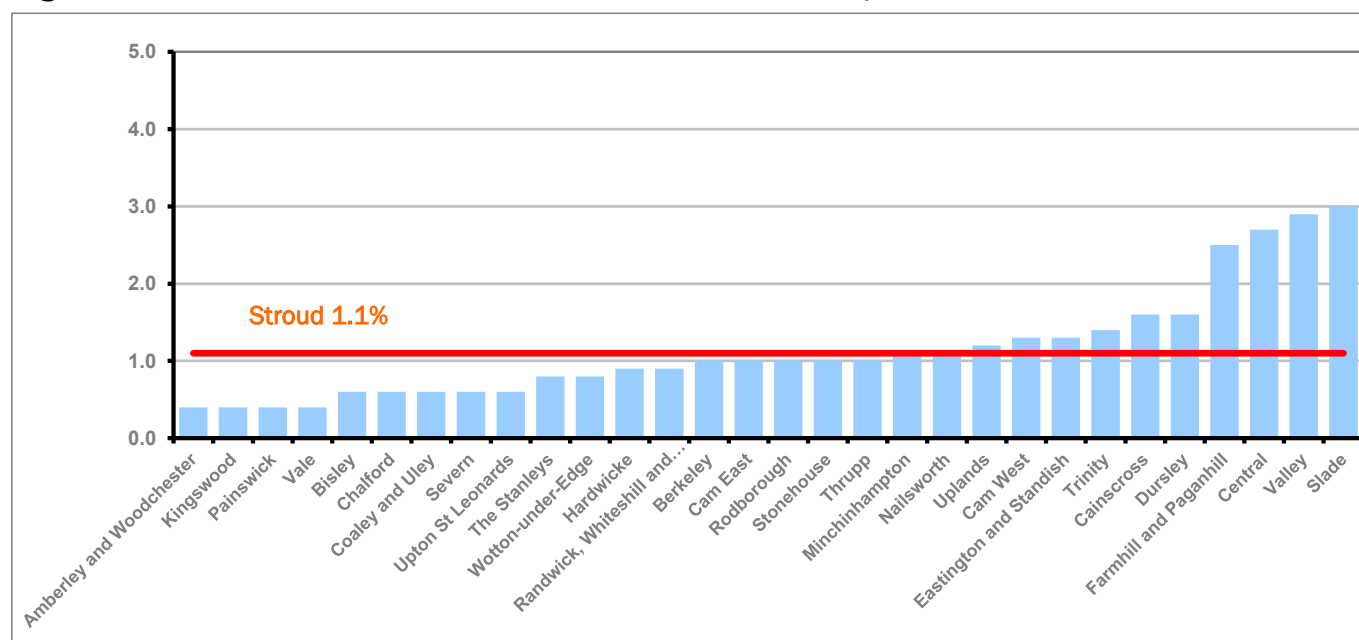


Figure 12 shows the claimant rates in Stroud District wards. The red line represents the average claimant rate across the District of 1.1%. Ten wards are above the average.

## PART 4: LOCAL AUTHORITY AND DISTRICT ANALYSIS

### 4.5 Stroud District continued...

Table 9: Analysis of Claimant Count at Stroud District ward level - January 2019

District	Ward	Rate	Rank*
Stroud	Amberley and Woodchester	0.4	2
Stroud	Kingswood	0.4	2
Stroud	Painswick	0.4	2
Stroud	Vale	0.4	2
Stroud	Bisley	0.6	11
Stroud	Chalford	0.6	11
Stroud	Coaley and Uley	0.6	11
Stroud	Severn	0.6	11
Stroud	Upton St Leonards	0.6	11
Stroud	The Stanleys	0.8	28
Stroud	Wotton-under-Edge	0.8	28
Stroud	Hardwicke	0.9	38
Stroud	Randwick, Whiteshill and Ruscombe	0.9	38
Stroud	Berkeley	1.0	48
Stroud	Cam East	1.0	48
Stroud	Rodborough	1.0	48
Stroud	Stonehouse	1.0	48
Stroud	Thrupp	1.0	48
Stroud	Minchinhampton	1.1	62
Stroud	Nailsworth	1.1	62
Stroud	Uplands	1.2	70
Stroud	Cam West	1.3	78
Stroud	Eastington and Standish	1.3	78
Stroud	Trinity	1.4	90
Stroud	Cainscross	1.6	99
Stroud	Dursley	1.6	99
Stroud	Farmhill and Paganhill	2.5	126
Stroud	Central	2.7	129
Stroud	Valley	2.9	130
Stroud	Slade	3.0	131

	lowest 10% of county
	first quartile of county
	second quartile of county
	third quartile of county
	fourth quartile of county
	highest 10% of county

\* 1 = "best" and 142 = "worst"

Table 9 shows overall claimant rates for Stroud District wards and their position relative to all wards in Gloucestershire.

## PART 4: LOCAL AUTHORITY DISTRICT AND WARD ANALYSIS

### 4.6 Tewkesbury District

#### Claimant Rate and Claimant Count

Figure 13: Tewkesbury District claimant rate over the last year

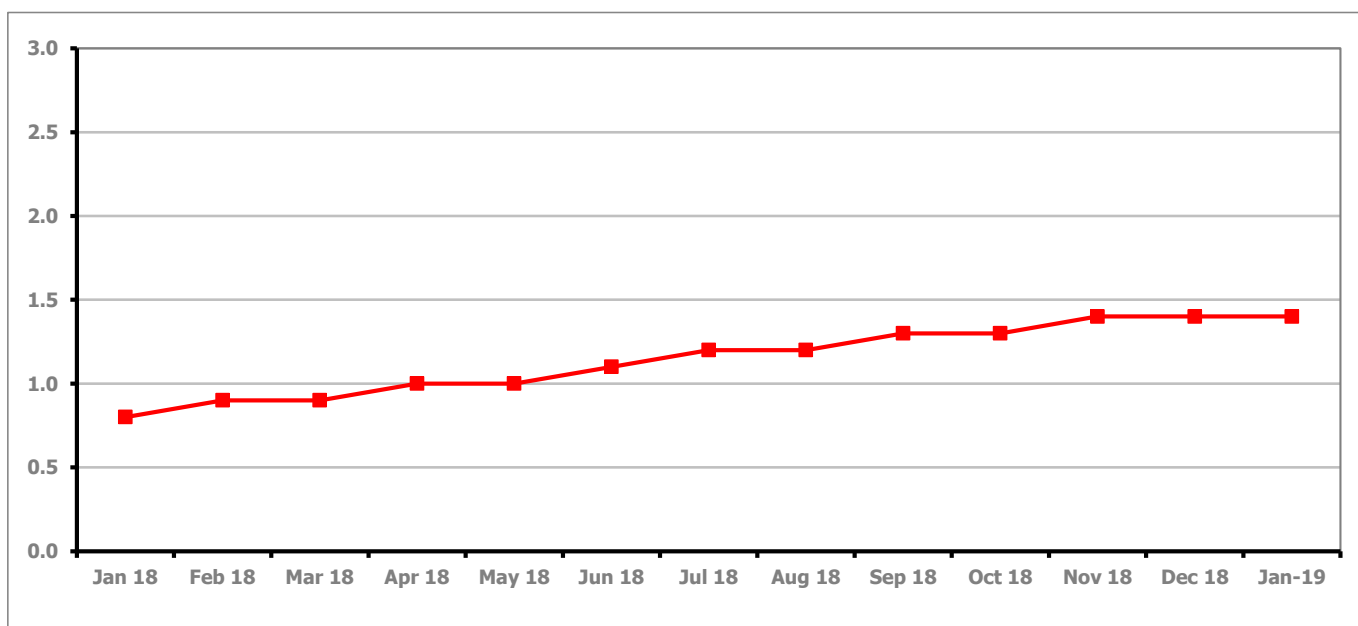


Figure 13 shows the claimant rate for Tewkesbury District stayed the same as last month at 1.4%.

Figure 14: Claimant rates across Tewkesbury District wards - January 2019

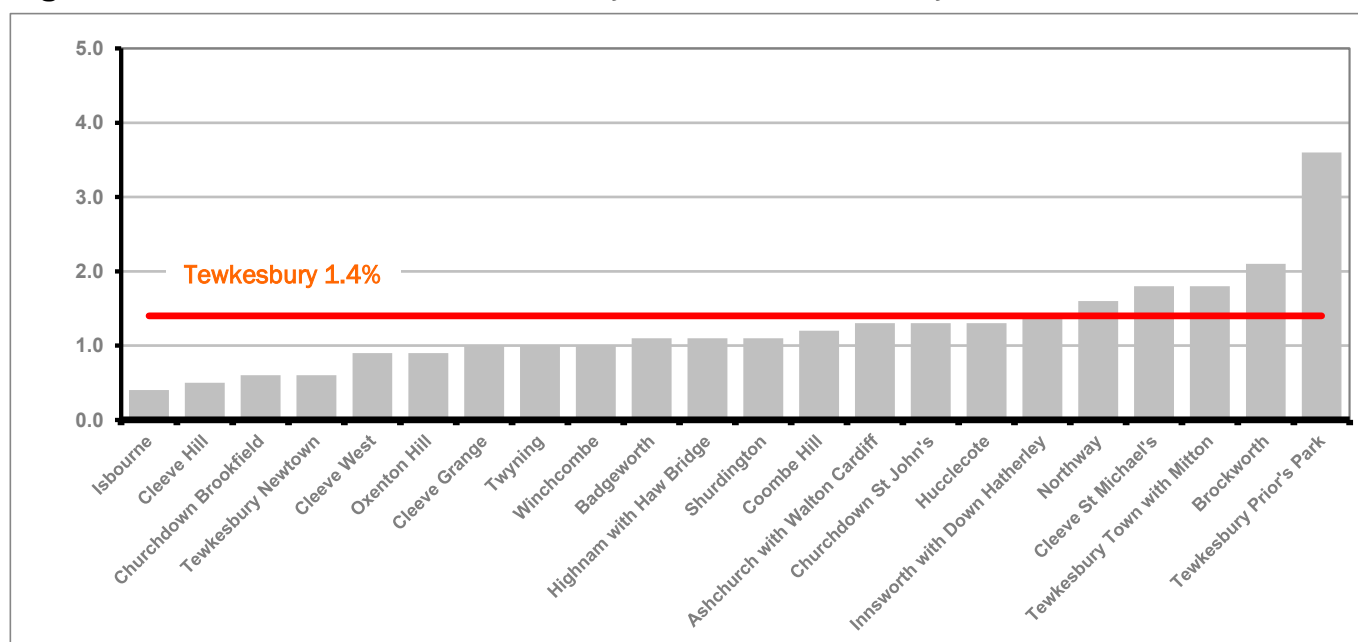


Figure 14 shows the claimant rates in Tewkesbury District wards. The red line represents the average claimant rate across the District of 1.4%. Five wards are above the average.



## PART 4: LOCAL AUTHORITY AND DISTRICT ANALYSIS

### 4.6 Tewkesbury District continued...

Table 10: Analysis of Claimant Count at Tewkesbury District level - January 2019

District	Ward	Rate	Rank*
Tewkesbury	Isbourne	0.4	2
Tewkesbury	Cleeve Hill	0.5	8
Tewkesbury	Churchdown Brookfield	0.6	11
Tewkesbury	Tewkesbury Newtown	0.6	11
Tewkesbury	Cleeve West	0.9	38
Tewkesbury	Oxenton Hill	0.9	38
Tewkesbury	Cleeve Grange	1.0	48
Tewkesbury	Twynning	1.0	48
Tewkesbury	Winchcombe	1.0	48
Tewkesbury	Badgeworth	1.1	62
Tewkesbury	Highnam with Haw Bridge	1.1	62
Tewkesbury	Shurdington	1.1	62
Tewkesbury	Coombe Hill	1.2	70
Tewkesbury	Ashchurch with Walton Cardiff	1.3	78
Tewkesbury	Churchdown St John's	1.3	78
Tewkesbury	Hucclecote	1.3	78
Tewkesbury	Innsworth with Down Hatherley	1.4	90
Tewkesbury	Northway	1.6	99
Tewkesbury	Cleeve St Michael's	1.8	110
Tewkesbury	Tewkesbury Town with Mitton	1.8	110
Tewkesbury	Brockworth	2.1	120
Tewkesbury	Tewkesbury Prior's Park	3.6	137

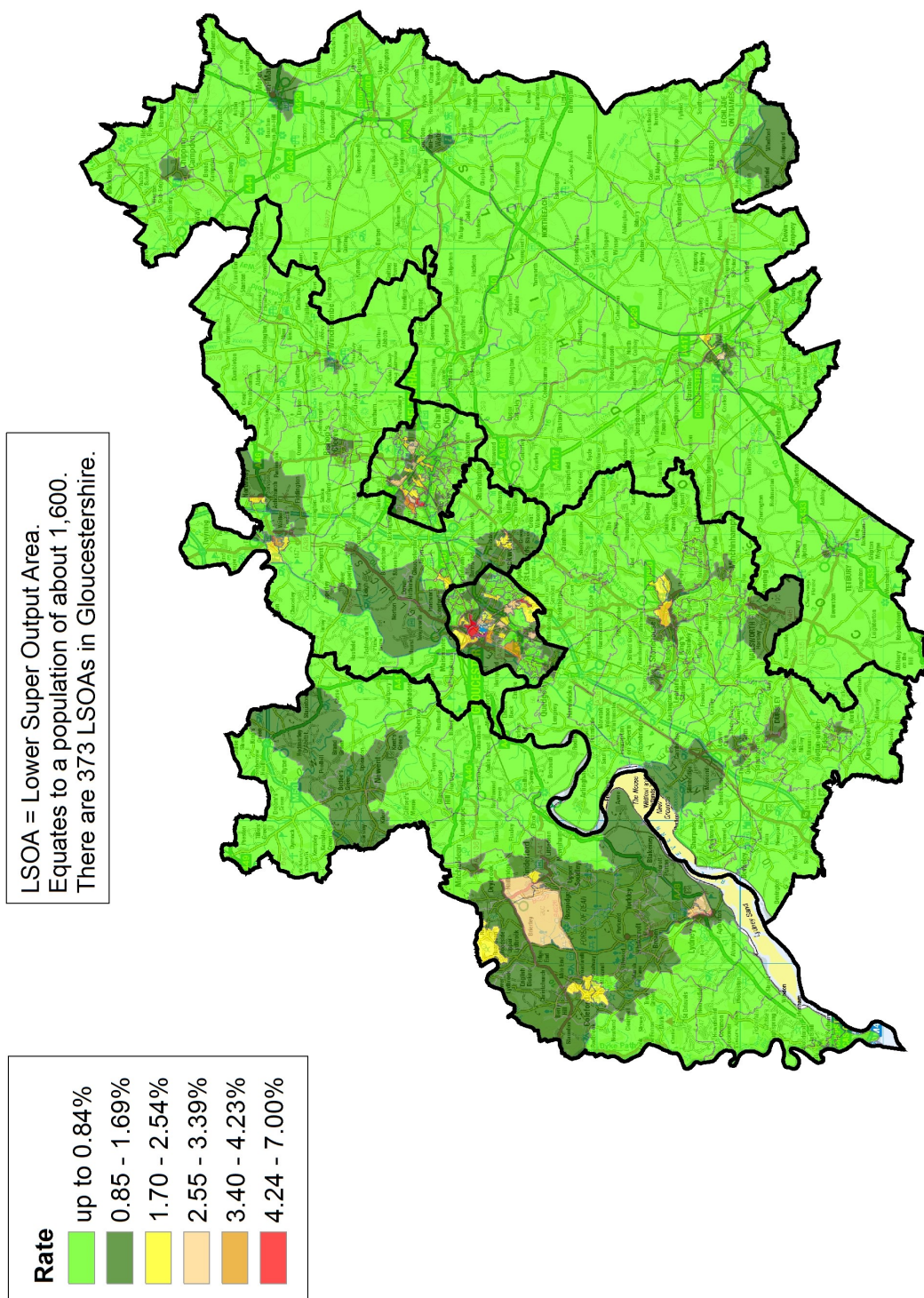
	lowest 10% of county
	first quartile of county
	second quartile of county
	third quartile of county
	fourth quartile of county
	highest 10% of county

\* 1 = "best" and 142 = "worst"

Table 10 shows overall claimant rates for Tewkesbury District wards and their position relative to all wards in Gloucestershire.

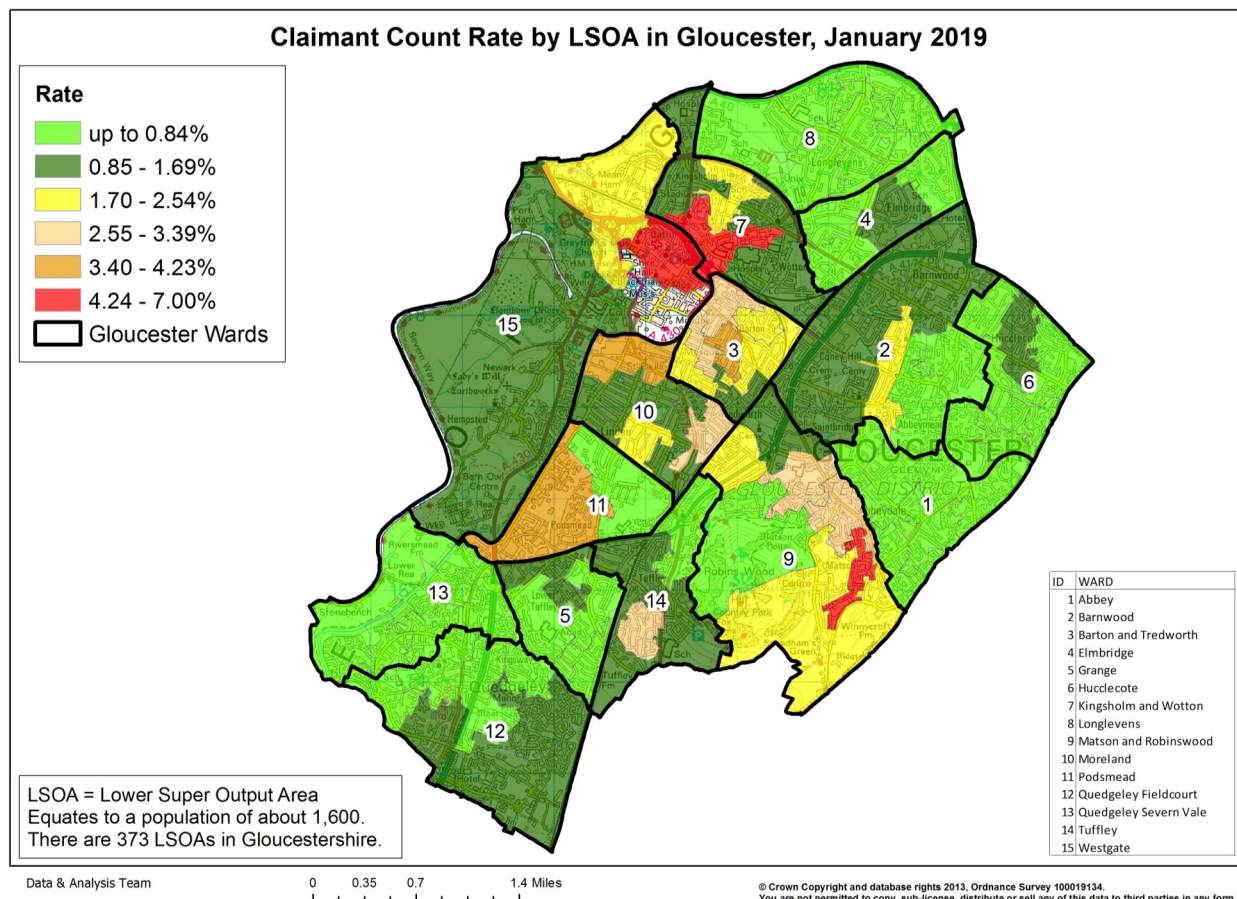
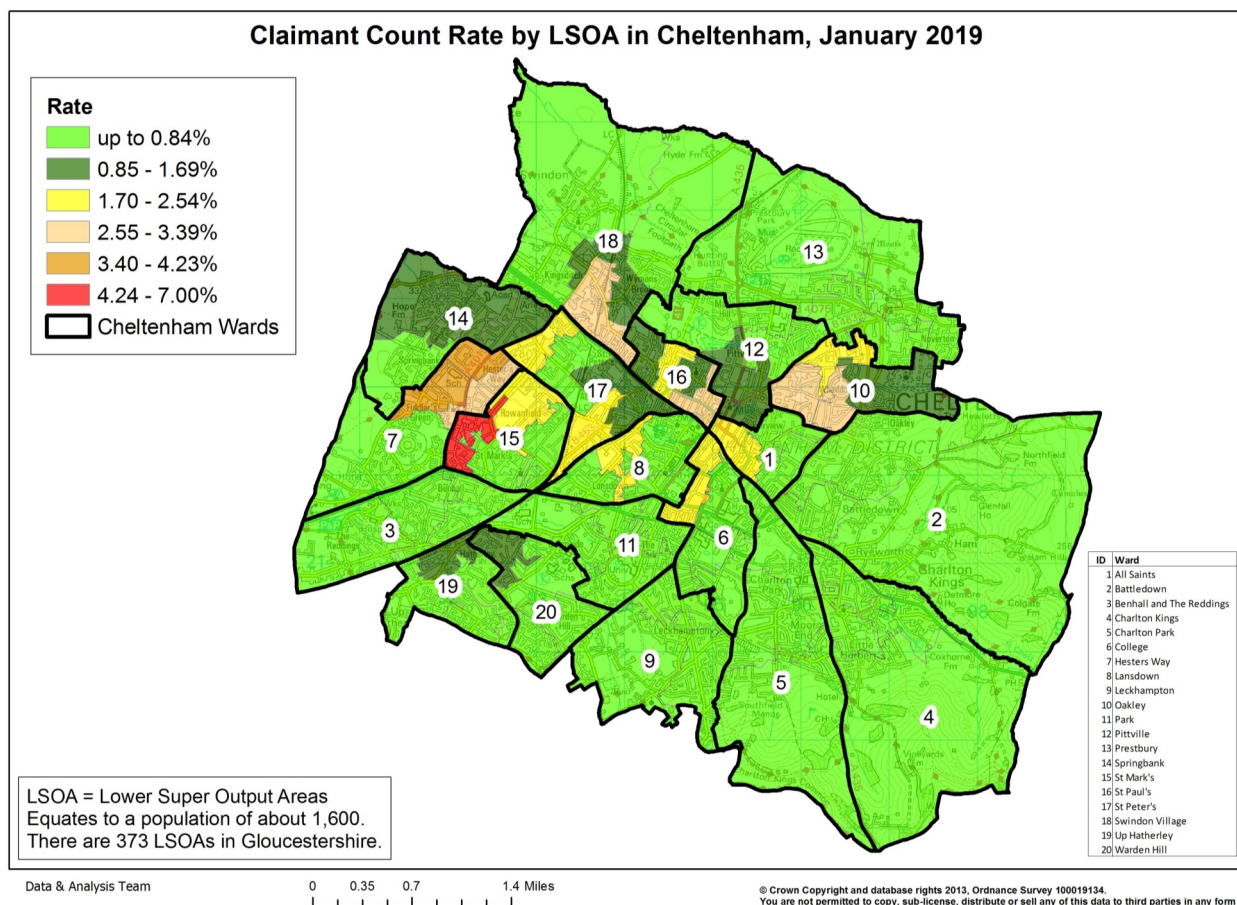
## PART 5: MAP SHOWING DISTRIBUTION OF CLAIMANT RATE ACROSS GLOUCESTERSHIRE

### Claimant Count Rate by LSOA in Gloucestershire, January 2019





## PART 5: MAP SHOWING DISTRIBUTION OF CLAIMANT RATE ACROSS GLOUCESTERSHIRE



## PART 6: YOUTH UNEMPLOYMENT(18-24 year olds)

### Youth Claimant Rate and Claimant Count

Figure 15: Claimant Count for Gloucestershire over the past year

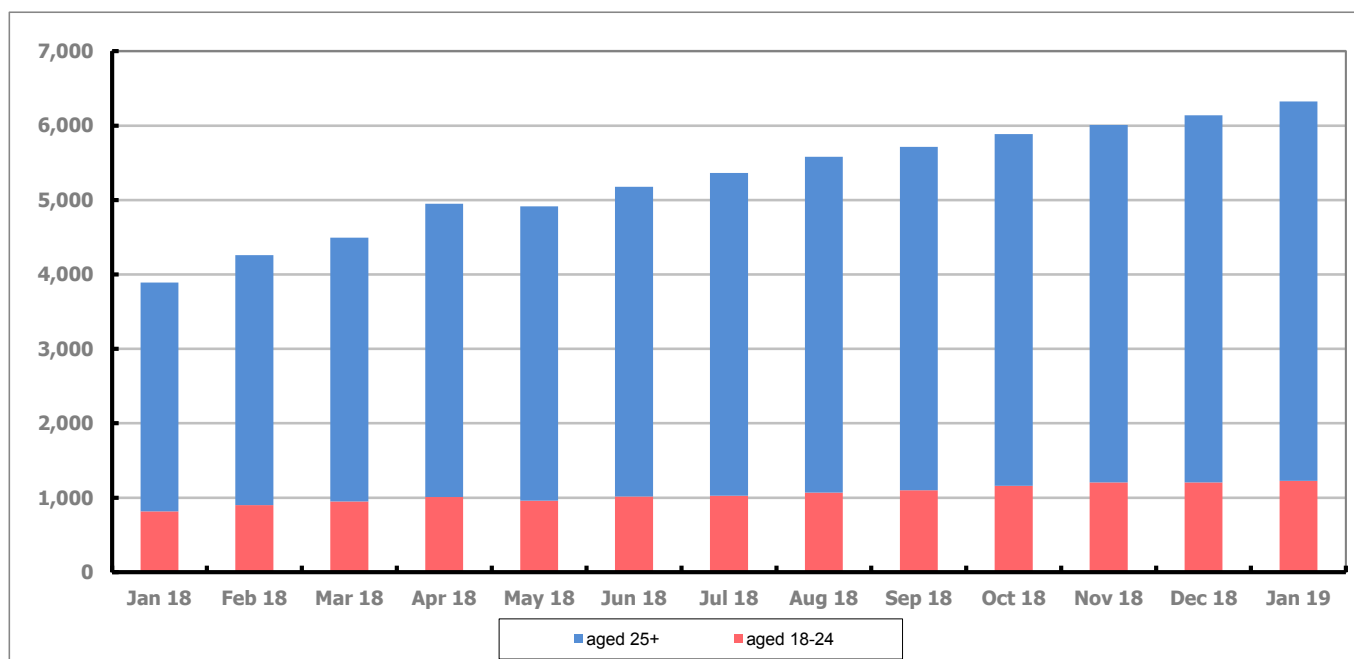


Figure 15 shows that in January 2019, 1,225 people aged 18-24 were claiming Job Seekers Allowance and Universal Credit who were not in work in Gloucestershire, this represents 19.3% of total working age claimants.

## PART 7: YOUNG PEOPLE NOT IN EDUCATION, EMPLOYMENT OR TRAINING (NEET) IN GLOUCESTERSHIRE

Data provided by Gloucestershire Youth Support Team on the situation of young people (16-18) in Gloucestershire who are not in education, employment or formal training.

Gloucestershire Youth Support Team is required to report performance with the 16-18 age range against nationally defined criteria for counting the NEET group. The NEET group includes young people actively seeking education, employment or training as well as those young people who are either not yet ready or who are unable to access these opportunities because of their personal circumstances. The figures quoted below include young people in both of these categories.

### Summary

At the end of January 2019 there were 398 young people aged 16-18 not in education, employment or training in Gloucestershire and this figure translates into an adjusted (\*) 16-18 NEET population of 2.59%. The total number of NEET young people stayed the same in January 2019 compared to December 2018, four districts saw an increase in their figures and two districts saw a decrease.

### Total NEET Group by District Area

#### January 2019 NEET data

	Cheltenham	Cotswold	Forest	Gloucester	Stroud	Tewkesbury	Total
<b>Total NEET</b>	86	29	67	114	59	43	398
<b>Cohort</b>	2742	2189	2152	3863	3298	2295	16539
<b>% NEET</b>	3.14	1.32	3.11	2.95	1.79	1.87	2.59*

If you would like to receive any further information on Gloucestershire's NEET strategy then please contact [Ruth.Critchlow@Prospects.co.uk](mailto:Ruth.Critchlow@Prospects.co.uk) or telephone 01452 426900.

(\*) Adjustment includes a proportion of young people aged 16-18 whose outcomes are not known to Gloucestershire Youth Support Team.