

# Unemployment Bulletin

Issue 163 February 2022

## Notes on Claimant Count (Experimental Statistics) from ONS:

These Claimant Count Experimental Statistics relate to 10 February 2022. Enhancements to Universal Credit as part of the UK government's response to the coronavirus (COVID-19) mean that an increasing number of people became eligible for unemployment-related benefit support, although still employed. Consequently changes in the Claimant Count will not be wholly because of changes in the number of people who are unemployed. We are not able to identify to what extent people who are employed or unemployed have affected the numbers.

## Contents

<b>Part 1: Summary</b>	<b>1</b>
A summary of unemployment data at district, County, regional and national level	
<b>Part 2: County</b>	<b>3</b>
Unemployment figures for the County compared to the South West and the rest of the UK	
<b>Part 3: Districts</b>	<b>4</b>
A comparative break down of unemployment figures by district	
<b>Part 4: Wards</b>	
Further breakdown of unemployment figures by ward:	
Cheltenham	6
Cotswolds	8
Forest of Dean	10
Gloucester	12
Stroud	14
Tewkesbury	16
<b>Part 5: Map</b>	<b>18</b>
Distribution of claimant rate across Gloucestershire	
<b>Part 6: Youth Unemployment</b>	<b>20</b>
Unemployment data for the 18-24 year old age group	
<b>Part 7: Young People</b>	<b>21</b>
Data about Young People Not in Education, Employment or Training (NEET)	

The Claimant Count is a measure of the number of people who are unemployed and claiming benefits. From 1996 until the recent introduction of Universal Credit, this was based on the number of people claiming Jobseeker's Allowance. However, since its introduction some unemployment benefit claimants will be claiming Universal Credit instead. **To reflect this change, the Claimant Count has been expanded to include people claiming Jobseeker's Allowance plus those who claim Universal Credit and who are searching for work.**

Gloucestershire is in the process of transitioning to full Universal Credit. This means a broader span of claimants will be required to look for work than previously under Jobseekers Allowance. As more people are brought within the coverage of Universal Credit, the Claimant Count is set to rise noticeably over time. This will happen irrespective of how the economy performs and is a feature of the design of Universal Credit which brings additional groups of people into 'Searching for Work' conditionality (and therefore the Claimant Count), to help encourage and support these claimants into work.

For more information about Universal Credit please see the [ONS website](https://www.ons.gov.uk/universal-credit).

## INTRODUCTION

The Unemployment Bulletin provides a monthly update on unemployment data for Gloucestershire, the South West region and the United Kingdom. It is produced by the Data & Analysis Team in the County Council's Planning, Performance and Change function. The data are sourced from the Office for National Statistics via Nomis ([www.nomis.co.uk](http://www.nomis.co.uk)). All data are rounded to the nearest 5 and may not precisely add to the sum of the number of people claiming JSA, and the number of people claiming Universal Credit required to seek work, due to independent rounding.

## PART 1: SUMMARY

The claimant rate in Gloucestershire was 2.8% in February 2022. The South West and UK rates increased to 3.2% and 4.3% respectively. Gloucestershire's rate was 0.4% lower than the South West average of 3.2%, and 1.5% lower than the UK average of 4.3%.

The claimant count in Gloucestershire in February 2022 increased by 115 people. The amount of people claiming in February 2022 was 1.1% higher than the number in January 2022. This compares to a 1.4% increase in the South West and a 1.8% increase in the UK.

## DISTRICTS AT A GLANCE

At a glance unemployment information grouped by district. Includes:

**Claimant count:** Total number of people claiming Job Seekers Allowance and Universal Credit who are not in work in February 2022

**Claimant count change on previous month:** How much larger/smaller February's claimant count is compared to January expressed as a %

**Claimant rate:** The % of working age population claiming Job Seekers Allowance and Universal Credit who are not in work in February 2022

**Highest claiming ward:** The ward with the highest claim count in that district and the rate

### CHELTENHAM BOROUGH

Claimant count:	2,265
Claimant count change on previous month:	1.6%
Claimant rate:	3.1%
Highest claiming ward(s)	Oakley (5.8%)

### GLOUCESTER CITY

Claimant count:	3,170
Claimant count change on previous month:	2.3%
Claimant rate:	3.9%
Highest claiming ward(s)	Barton and Tredworth (8.3%)

### COTSWOLD DISTRICT

Claimant count:	1,185
Claimant count change on previous month:	2.6%
Claimant rate:	2.3%
Highest claiming ward(s)	Watermoor (5.0%)

### STROUD DISTRICT

Claimant count:	1,465
Claimant count change on previous month:	-1.7%
Claimant rate:	2.0%
Highest claiming ward(s)	Stroud Central (5.6%)

### FOREST OF DEAN

Claimant count:	1,350
Claimant count change on previous month:	-2.5%
Claimant rate:	2.6%
Highest claiming ward(s)	Lydney East (5.3%)

### TEWKESBURY BOROUGH

Claimant count:	1,355
Claimant count change on previous month:	3.4%
Claimant rate:	2.4%
Highest claiming ward(s)	Tewkesbury South (4.8%)

## PART 2: UK, SW AND GLOUCESTERSHIRE INDICATORS

The unemployment situation in Gloucestershire compared to the South West and the UK.

### Claimant Rate

Figure 1: Claimant Rate for Gloucestershire, the South West and UK over the past year

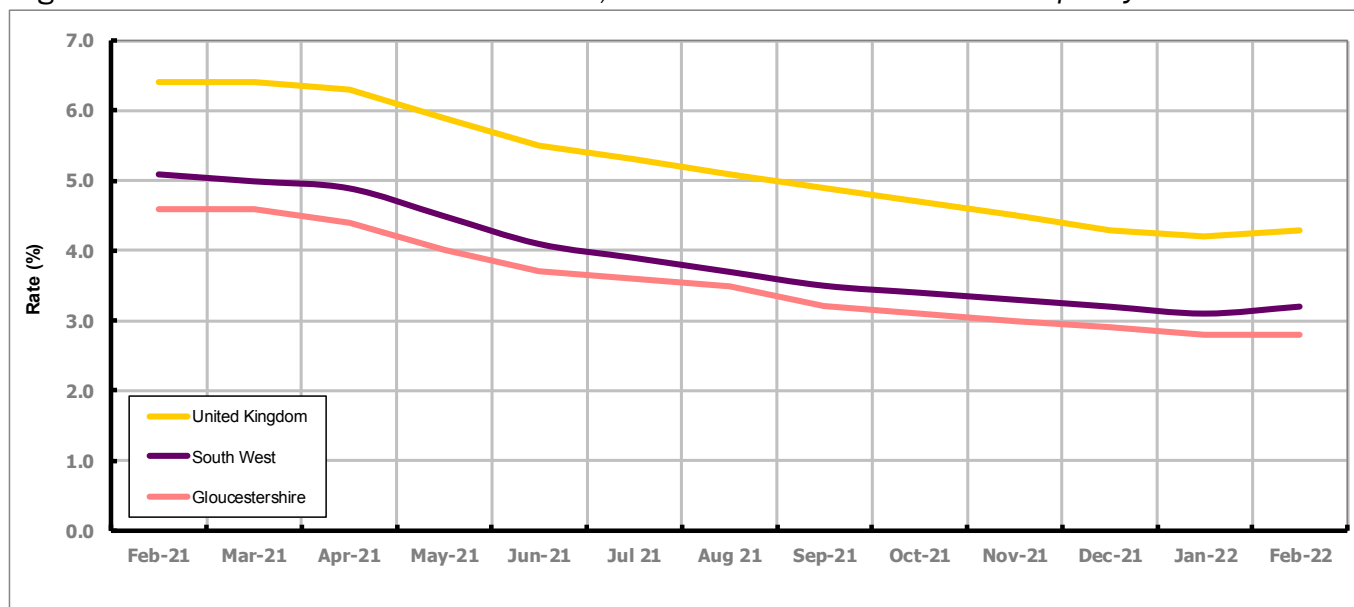


Figure 1 shows the claimant rate for Gloucestershire at 2.8% in February 2022. The Gloucestershire rate has been lower than the South West average since December 2015, with the exception of April and May 2016 when it was the same. On average, it has been approximately 1.7% lower than the UK average since the same month of the previous year.

### Claimant Count

Table 1: Analysis of UK, South West and Gloucestershire Claimant Counts

Area	Claimant Count in February 2022	% change on January 2022	Consecutive months increasing
UK	1,809,660	1.8%	0
South West	107,135	1.4%	0
Gloucestershire	10,785	1.1%	0

Table 1 shows that in February 2022, the number of claimants in Gloucestershire was 1.1% higher than the number in January 2022.

## PART 3: LOCAL AUTHORITY DISTRICT ANALYSIS

### Claimant Rate and Claimant Count

Figure 2: Claimant Rate (%) across Gloucestershire - February 2022

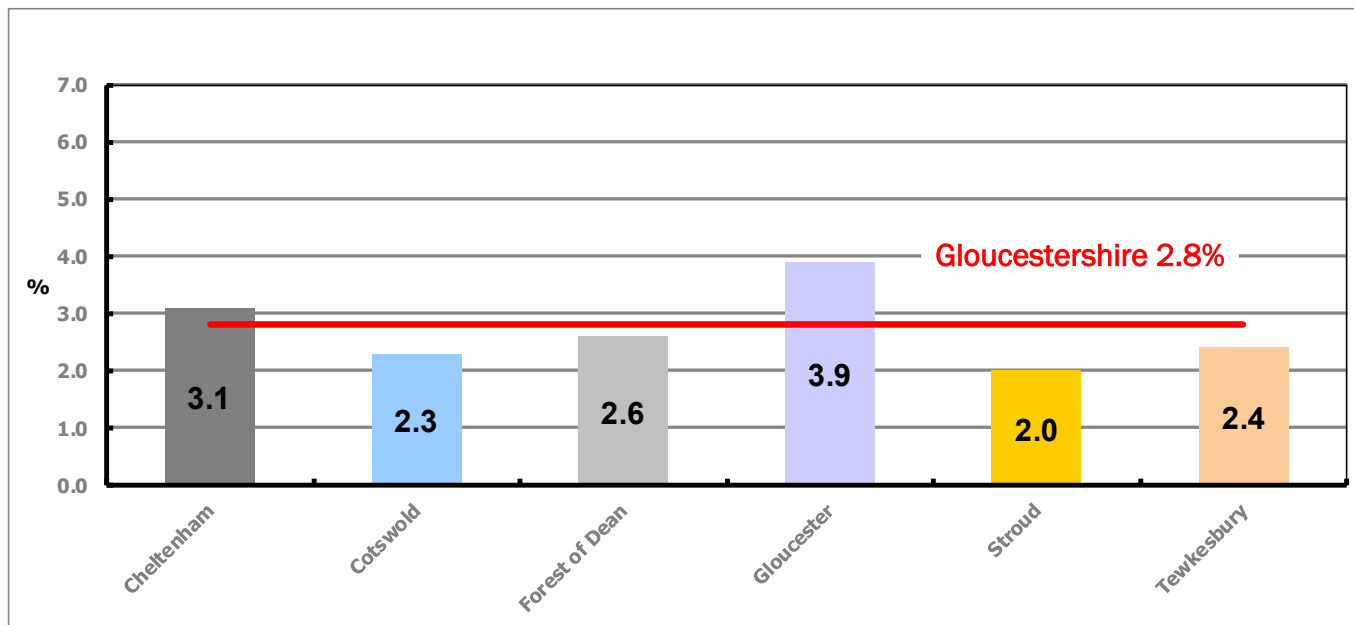


Figure 2 shows the claimant rate for February 2022 in Gloucestershire. Between January and February 2022 the rate increased in Cotswold, Gloucester and Tewkesbury, but decreased in Forest of Dean and Stroud. All other districts remained the same.

Table 2: Analysis of Gloucestershire and District Claimant Counts

Total	Feb 22 Number	Feb 22 Rate	Jan 22 Number	Jan 22 Rate	Monthly change	% monthly change	Monthly change of rate
<b>Gloucestershire</b>	10,785	2.8	10,670	2.8	115	1.1%	0.0
Cheltenham	2,265	3.1	2,230	3.1	35	1.6%	0.0
Cotswold	1,185	2.3	1,155	2.2	30	2.6%	0.1
Forest of Dean	1,350	2.6	1,385	2.7	-35	-2.5%	-0.1
Gloucester	3,170	3.9	3,100	3.8	70	2.3%	0.1
Stroud	1,465	2.0	1,490	2.1	-25	-1.7%	-0.1
Tewkesbury	1,355	2.4	1,310	2.3	45	3.4%	0.1

Table 2 shows the change in the claimant count in February 2022 compared to January 2022. All districts saw an increase in the number of claimants except Forest of Dean and Stroud which saw a decrease.

Table 3: Analysis of Male Gloucestershire and District Claimant Counts

Male	Feb 22 Number	Feb 22 Rate	Jan 22 Number	Jan 22 Rate	Monthly change	% monthly change	Monthly change of rate
<b>Gloucestershire</b>	6,150	3.2	6,060	3.2	90	1.5%	0.0
Cheltenham	1,390	3.8	1,345	3.7	45	3.3%	0.1
Cotswold	615	2.4	600	2.4	15	2.5%	0.0
Forest of Dean	735	2.9	750	3.0	-15	-2.0%	-0.1
Gloucester	1,895	4.6	1,845	4.5	50	2.7%	0.1
Stroud	775	2.2	795	2.2	-20	-2.5%	0.0
Tewkesbury	735	2.6	725	2.6	10	1.4%	0.0

Table 3 shows the change in the male claimant count in February 2022 compared to January 2022. All districts saw an increase in the number of male claimants except Forest of Dean and Stroud which saw a decrease.

Table 4: Analysis of Female Gloucestershire and District Claimant Counts

Female	Feb 22 Number	Feb 22 Rate	Jan 22 Number	Jan 22 Rate	Monthly change	% monthly change	Monthly change of rate
<b>Gloucestershire</b>	4,635	2.4	4,610	2.4	25	0.5%	0.0
Cheltenham	875	2.4	885	2.5	-10	-1.1%	-0.1
Cotswold	565	2.1	550	2.1	15	2.7%	0.0
Forest of Dean	610	2.4	635	2.5	-25	-3.9%	-0.1
Gloucester	1,275	3.1	1,255	3.1	20	1.6%	0.0
Stroud	690	1.9	695	1.9	-5	-0.7%	0.0
Tewkesbury	620	2.1	585	2.0	35	6.0%	0.1

Table 4 shows the change in the female claimant count in February 2022 compared to January 2022. Cotswold, Gloucester and Tewkesbury saw an increase in the number of female claimants, while all other districts saw a decrease.

## PART 4: LOCAL AUTHORITY DISTRICT AND WARD ANALYSIS

This section covers the six districts and a comparison of their constituent wards.

### 4.1 Cheltenham Borough

#### Claimant Rate and Claimant Count

Figure 3: Cheltenham Borough claimant rate over the last year

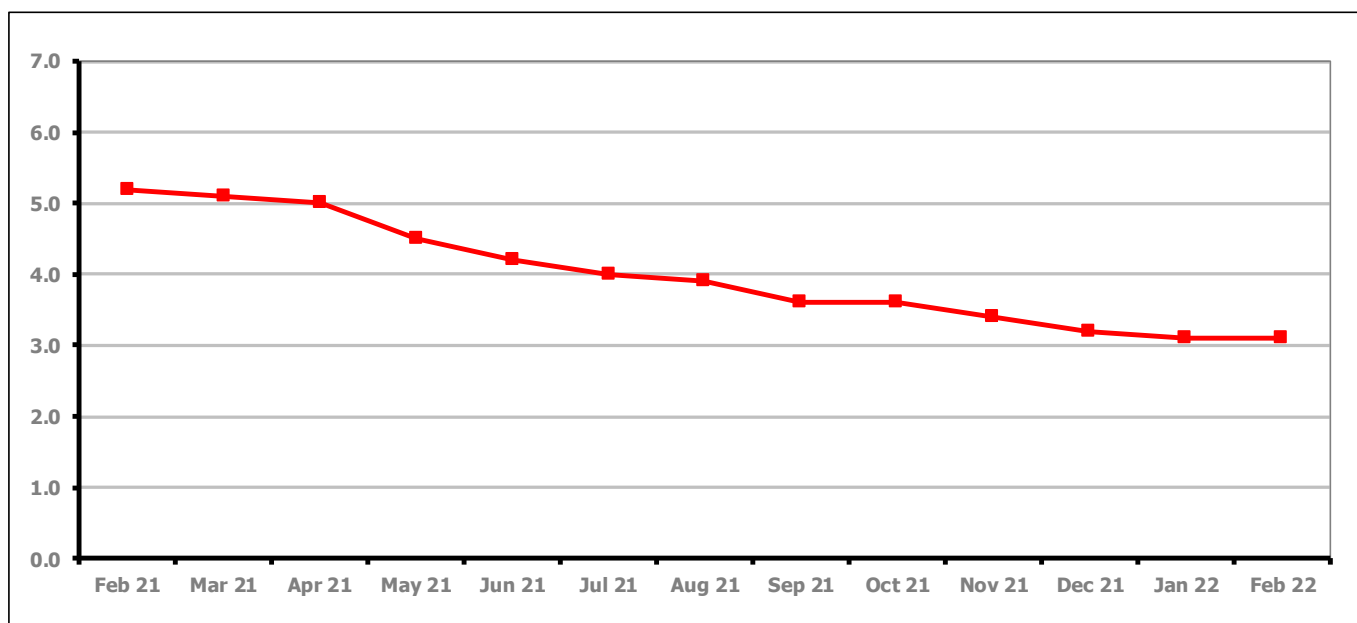


Figure 3 shows the claimant rate in Cheltenham remained at 3.1% in February 2022.

Figure 4: Claimant rates across Cheltenham Borough wards - February 2022

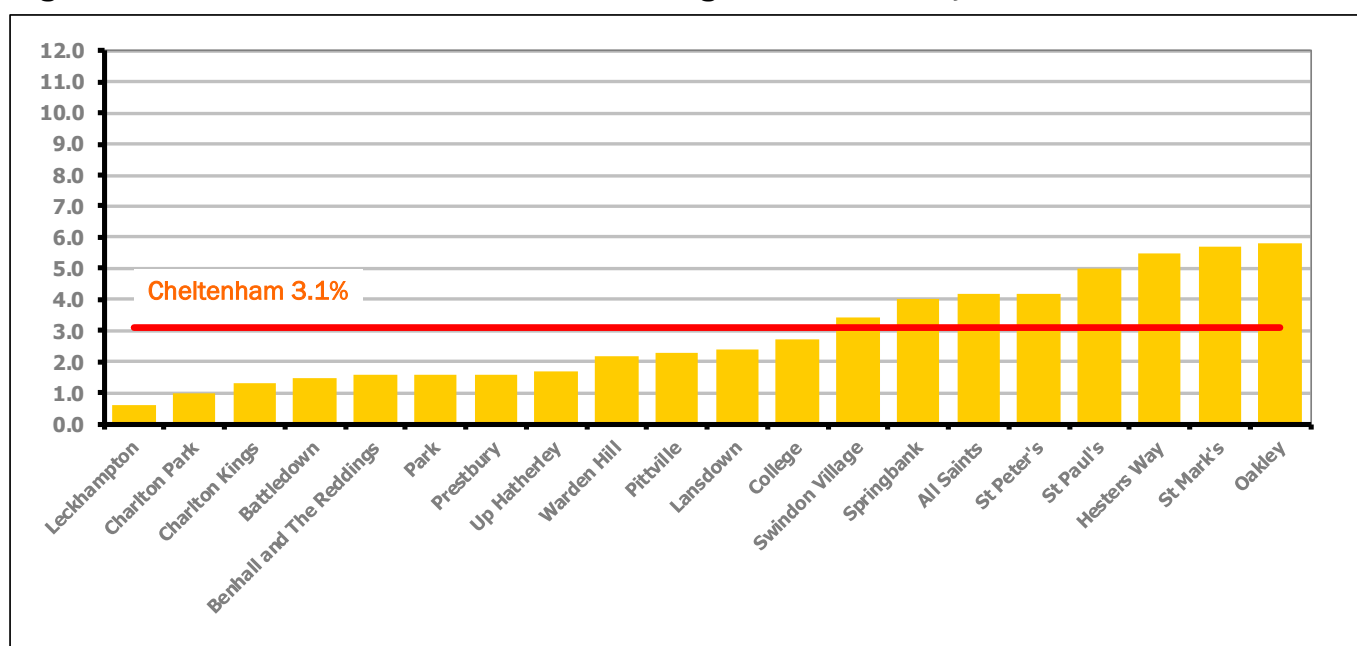


Figure 4 shows the claimant rates for Cheltenham Borough wards. The red line represents the average claimant rate across the Borough of 3.1%. Eight wards lie above the average.

## PART 4: LOCAL AUTHORITY DISTRICT AND WARD ANALYSIS

### 4.1 Cheltenham Borough continued...

Table 5: Analysis of Claimant Count at Cheltenham Borough ward level - February 2022

District	Ward	Rate	Rank*
Cheltenham	Leckhampton	0.6	1
Cheltenham	Charlton Park	1.0	2
Cheltenham	Charlton Kings	1.3	13
Cheltenham	Battledown	1.5	19
Cheltenham	Benhall and The Reddings	1.6	25
Cheltenham	Park	1.6	25
Cheltenham	Prestbury	1.6	25
Cheltenham	Up Hatherley	1.7	31
Cheltenham	Warden Hill	2.2	66
Cheltenham	Pittville	2.3	74
Cheltenham	Lansdown	2.4	84
Cheltenham	College	2.7	94
Cheltenham	Swindon Village	3.4	110
Cheltenham	Springbank	4.0	118
Cheltenham	All Saints	4.2	119
Cheltenham	St Peter's	4.2	119
Cheltenham	St Paul's	5.0	126
Cheltenham	Hesters Way	5.5	132
Cheltenham	St Mark's	5.7	135
Cheltenham	Oakley	5.8	136

	lowest 10% of county
	first quartile of county
	second quartile of county
	third quartile of county
	fourth quartile of county
	highest 10% of county

\* 1 = "best" and 138 = "worst"

Table 5 shows overall claimant rates for Cheltenham Borough wards and their position relative to all wards in Gloucestershire.

## PART 4: LOCAL AUTHORITY DISTRICT AND WARD ANALYSIS

### 4.2 Cotswold District

#### Claimant Rate and Claimant Count

Figure 5: Cotswold District claimant rate over the last year

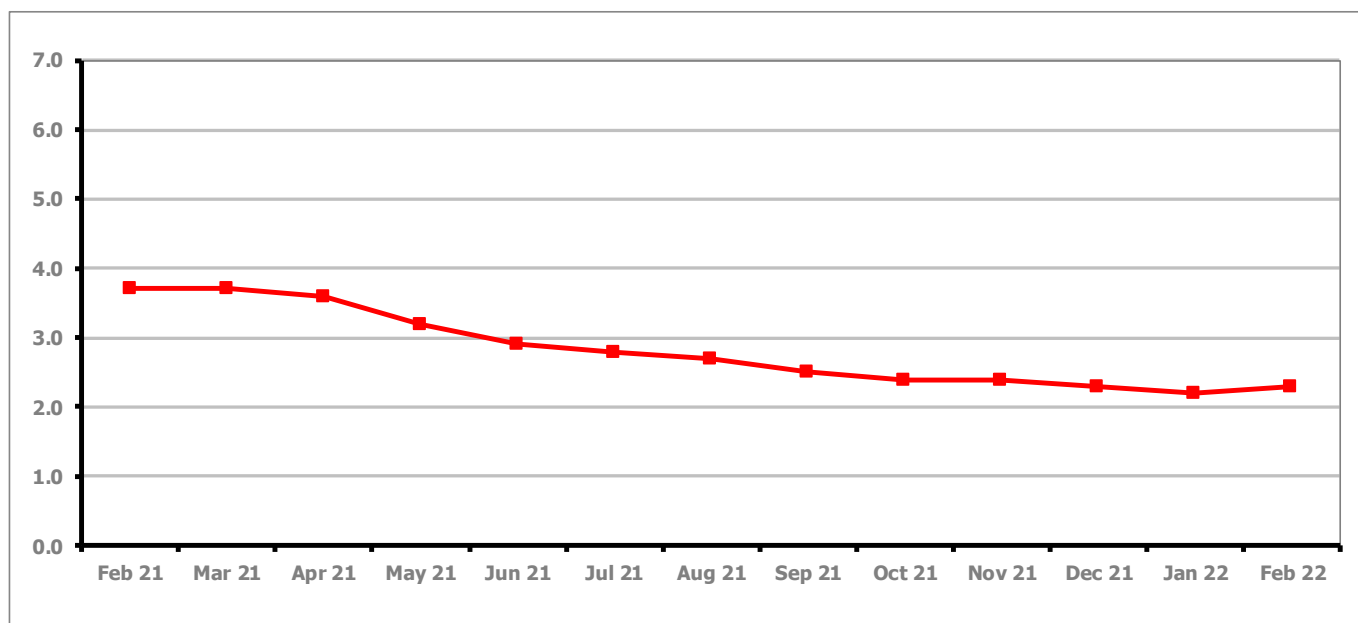


Figure 5 shows the claimant rate in Cotswold District increased to 2.3% in February 2022.

Figure 6: Claimant rates across Cotswold District wards - February 2022

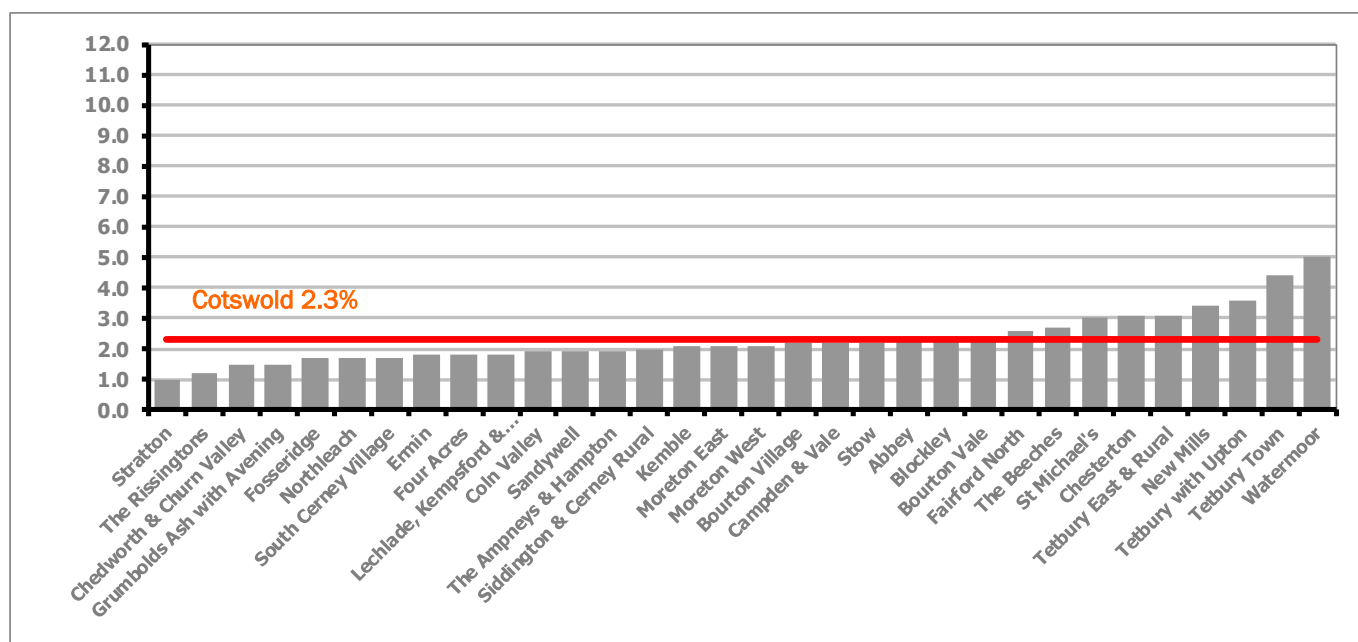


Figure 6 shows the claimant rates for Cotswold District wards. The red line represents the average claimant rate across the District of 2.3%. Nine wards lie above the average.



## PART 4: LOCAL AUTHORITY DISTRICT AND WARD ANALYSIS

### 4.2 Cotswold District continued...

Table 6: Analysis of Claimant Count at Cotswold District ward level - February 2022

District	Ward	Rate	Rank*
Cotswolds	Stratton	1.0	2
Cotswolds	The Rissingtons	1.2	9
Cotswolds	Chedworth & Churn Valley	1.5	19
Cotswolds	Grumbolds Ash with Avening	1.5	19
Cotswolds	Fosseridge	1.7	31
Cotswolds	Northleach	1.7	31
Cotswolds	South Cerney Village	1.7	31
Cotswolds	Ermin	1.8	38
Cotswolds	Four Acres	1.8	38
Cotswolds	Lechlade, Kempsford & Fairford South	1.8	38
Cotswolds	Coln Valley	1.9	46
Cotswolds	Sandywell	1.9	46
Cotswolds	The Ampneys & Hampton	1.9	46
Cotswolds	Siddington & Cerney Rural	2.0	55
Cotswolds	Kemble	2.1	58
Cotswolds	Moreton East	2.1	58
Cotswolds	Moreton West	2.1	58
Cotswolds	Bourton Village	2.2	66
Cotswolds	Campden & Vale	2.2	66
Cotswolds	Stow	2.2	66
Cotswolds	Abbey	2.3	74
Cotswolds	Blockley	2.3	74
Cotswolds	Bourton Vale	2.3	74
Cotswolds	Fairford North	2.6	92
Cotswolds	The Beeches	2.7	94
Cotswolds	St Michael's	3.0	103
Cotswolds	Chesterton	3.1	105
Cotswolds	Tetbury East & Rural	3.1	105
Cotswolds	New Mills	3.4	110
Cotswolds	Tetbury with Upton	3.6	116
Cotswolds	Tetbury Town	4.4	122
Cotswolds	Watermoor	5.0	126

	lowest 10% of county
	first quartile of county
	second quartile of county
	third quartile of county
	fourth quartile of county
	highest 10% of county

\* 1 = "best" and 138 = "worst"

Table 6 shows overall claimant rates for Cotswold District wards and their position relative to all wards in Gloucestershire.

## PART 4: LOCAL AUTHORITY DISTRICT AND WARD ANALYSIS

### 4.3 Forest of Dean District

#### Claimant Rate and Claimant Count

Figure 7: Forest of Dean District claimant rate over the last year

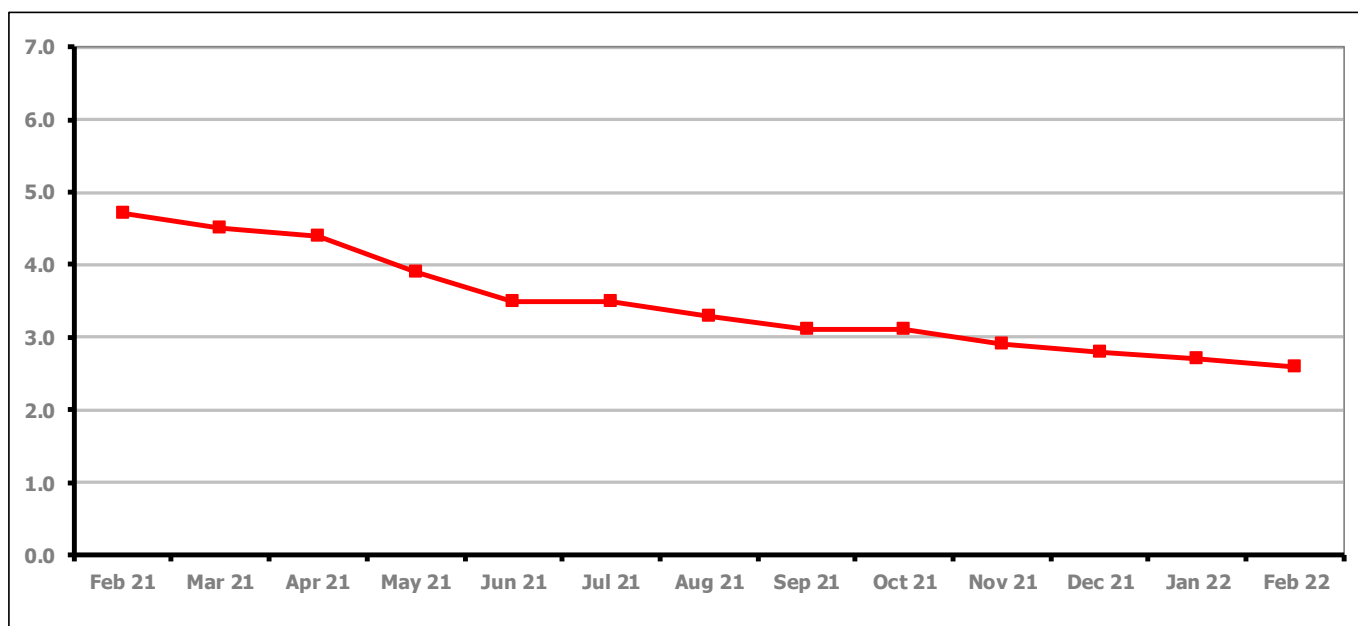


Figure 7 shows the claimant rate in the Forest of Dean decreased to 2.6% in February 2022.

Figure 8: Claimant rates across Forest of Dean District wards - February 2022

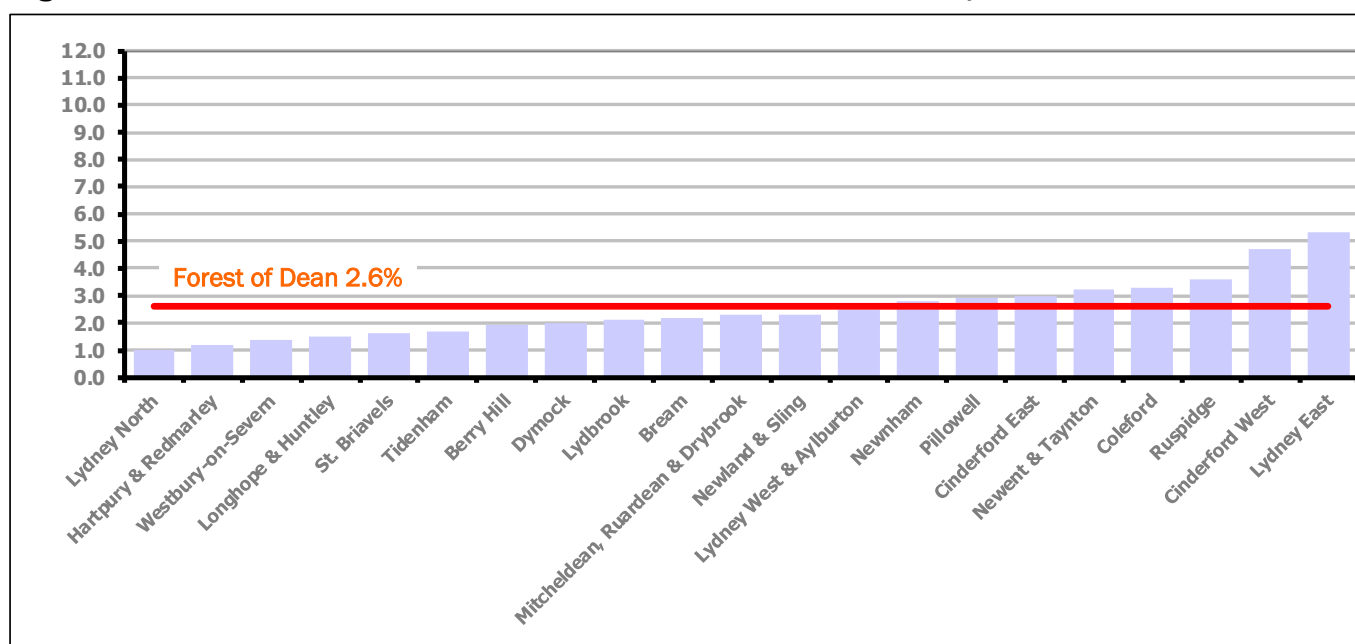


Figure 8 shows the claimant rates for the Forest of Dean District wards. The red line represents the average claimant rate across the District of 2.6%. Eight wards lie above the average.

**PART 4: LOCAL AUTHORITY DISTRICT AND WARD ANALYSIS****4.3 Forest of Dean District continued...***Table 7: Analysis of Claimant Count at Forest of Dean District ward level - February 2022*

District	Ward	Rate	Rank*
Forest	Lydney North	1.0	2
Forest	Hartpury & Redmarley	1.2	9
Forest	Westbury-on-Severn	1.4	17
Forest	Longhope & Huntley	1.5	19
Forest	St. Briavels	1.6	25
Forest	Tidenham	1.7	31
Forest	Berry Hill	1.9	46
Forest	Dymock	2.0	55
Forest	Lydbrook	2.1	58
Forest	Bream	2.2	66
Forest	Mitcheldean, Ruardean & Drybrook	2.3	74
Forest	Newland & Sling	2.3	74
Forest	Lydney West & Aylburton	2.5	88
Forest	Newnham	2.8	98
Forest	Pillowell	2.9	101
Forest	Cinderford East	3.0	103
Forest	Newent & Taynton	3.2	107
Forest	Coleford	3.3	109
Forest	Ruspidge	3.6	116
Forest	Cinderford West	4.7	123
Forest	Lydney East	5.3	130

	lowest 10% of county
	first quartile of county
	second quartile of county
	third quartile of county
	fourth quartile of county
	highest 10% of county

\* 1 = "best" and 138 = "worst"

Table 7 shows overall claimant rates for the Forest of Dean District wards and their position relative to all wards in Gloucestershire.

## PART 4: LOCAL AUTHORITY DISTRICT AND WARD ANALYSIS

### 4.4 Gloucester City

#### Claimant Rate and Claimant Count

Figure 9: Gloucester City claimant rate over the last year

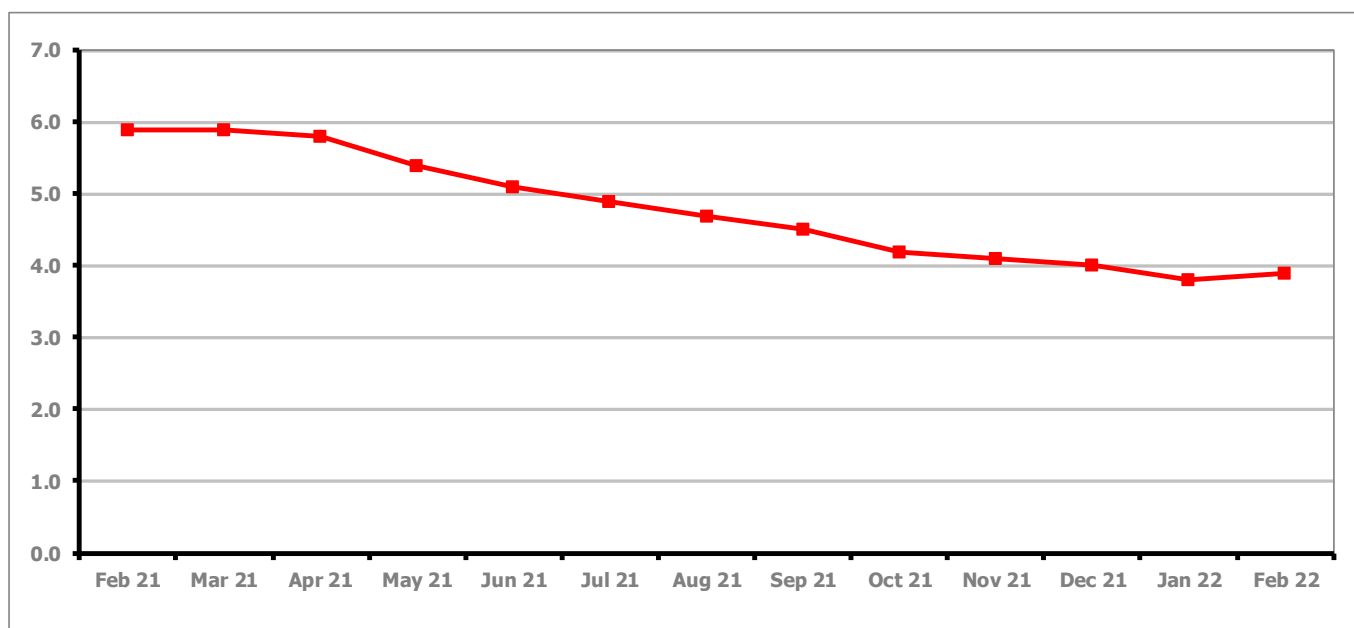


Figure 9 shows the claimant rate for Gloucester City increased to 3.9% in February 2022.

Figure 10: Claimant rates across Gloucester City wards - February 2022

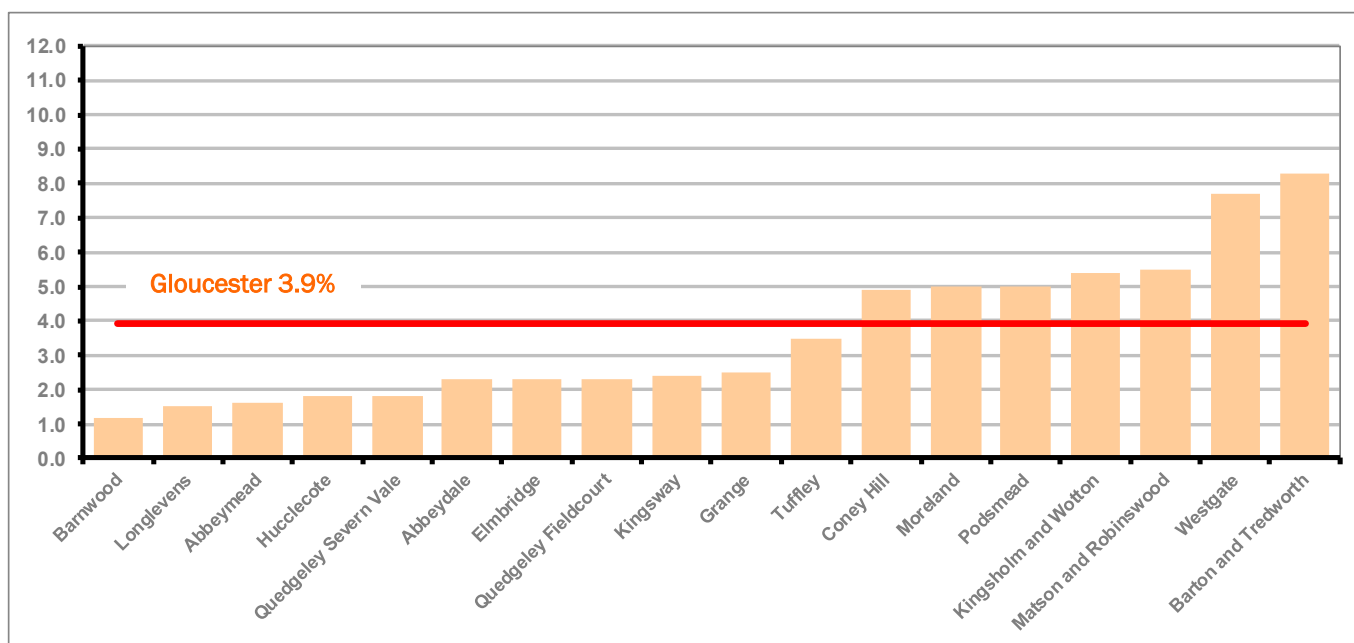


Figure 10 shows the claimant rates for Gloucester City district wards. The red line represents the average claimant rate across the City of 3.9%. Seven wards lie above the average.

## PART 4: LOCAL AUTHORITY DISTRICT AND WARD ANALYSIS

### 4.4 Gloucester City continued...

Table 8: Analysis of Claimant Count at Gloucester City ward level - February 2022

District	Ward	Rate	Rank*
Gloucester	Barnwood	1.2	9
Gloucester	Longlevens	1.5	19
Gloucester	Abbeymead	1.6	25
Gloucester	Hucclecote	1.8	38
Gloucester	Quedgeley Severn Vale	1.8	38
Gloucester	Abbeydale	2.3	74
Gloucester	Elmbridge	2.3	74
Gloucester	Quedgeley Fieldcourt	2.3	74
Gloucester	Kingsway	2.4	84
Gloucester	Grange	2.5	88
Gloucester	Tuffley	3.5	114
Gloucester	Coney Hill	4.9	125
Gloucester	Moreland	5.0	126
Gloucester	Podsmead	5.0	126
Gloucester	Kingsholm and Wotton	5.4	131
Gloucester	Matson and Robinswood	5.5	132
Gloucester	Westgate	7.7	137
Gloucester	Barton and Tredworth	8.3	138

	lowest 10% of county
	first quartile of county
	second quartile of county
	third quartile of county
	fourth quartile of county
	highest 10% of county

\* 1 = "best" and 138 = "worst"

Table 8 shows overall claimant rates for Gloucester City wards and their position relative to all wards in Gloucestershire.

## PART 4: LOCAL AUTHORITY DISTRICT AND WARD ANALYSIS

### 4.5 Stroud District

#### Claimant Rate and Claimant Count

Figure 11: Stroud District claimant rate over the last year

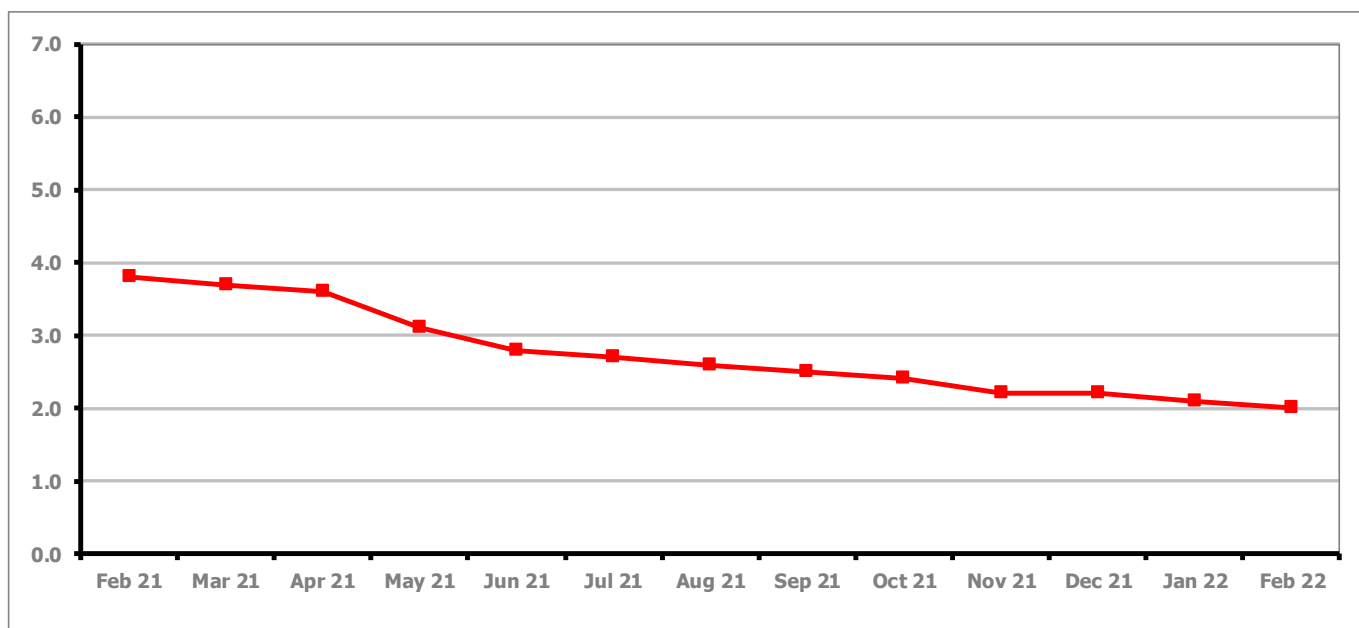


Figure 11 shows the claimant rate for Stroud decreased to 2.0% in February 2022.

Figure 12: Claimant rates across Stroud District wards - February 2022

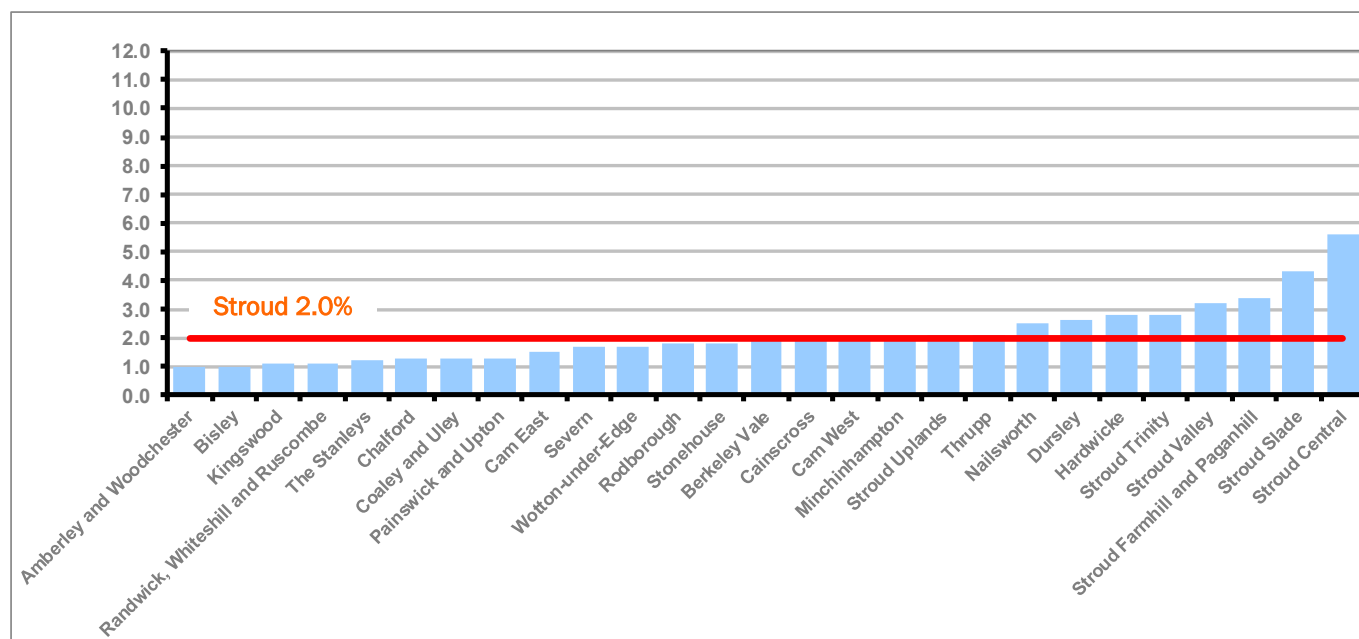


Figure 12 shows the claimant rates in Stroud District wards. The red line represents the average claimant rate across the District of 2.0%. Ten wards are above the average.

## PART 4: LOCAL AUTHORITY AND DISTRICT ANALYSIS

### 4.5 Stroud District continued...

Table 9: Analysis of Claimant Count at Stroud District ward level - February 2022

District	Ward	Rate	Rank*
Stroud	Amberley and Woodchester	1.0	2
Stroud	Bisley	1.0	2
Stroud	Kingswood	1.1	7
Stroud	Randwick, Whiteshill and Ruscombe	1.1	7
Stroud	The Stanleys	1.2	9
Stroud	Chalford	1.3	13
Stroud	Coaley and Uley	1.3	13
Stroud	Painswick and Upton	1.3	13
Stroud	Cam East	1.5	19
Stroud	Severn	1.7	31
Stroud	Wotton-under-Edge	1.7	31
Stroud	Rodborough	1.8	38
Stroud	Stonehouse	1.8	38
Stroud	Berkeley Vale	1.9	46
Stroud	Cainscross	1.9	46
Stroud	Cam West	1.9	46
Stroud	Minchinhampton	2.0	55
Stroud	Stroud Uplands	2.1	58
Stroud	Thrupp	2.1	58
Stroud	Nailsworth	2.5	88
Stroud	Dursley	2.6	92
Stroud	Hardwicke	2.8	98
Stroud	Stroud Trinity	2.8	98
Stroud	Stroud Valley	3.2	107
Stroud	Stroud Farmhill and Paganhill	3.4	110
Stroud	Stroud Slade	4.3	121
Stroud	Stroud Central	5.6	134

	lowest 10% of county
	first quartile of county
	second quartile of county
	third quartile of county
	fourth quartile of county
	highest 10% of county

\* 1 = "best" and 138 = "worst"

Table 9 shows overall claimant rates for Stroud District wards and their position relative to all wards in Gloucestershire.

## PART 4: LOCAL AUTHORITY DISTRICT AND WARD ANALYSIS

### 4.6 Tewkesbury Borough

#### Claimant Rate and Claimant Count

Figure 13: Tewkesbury Borough claimant rate over the last year

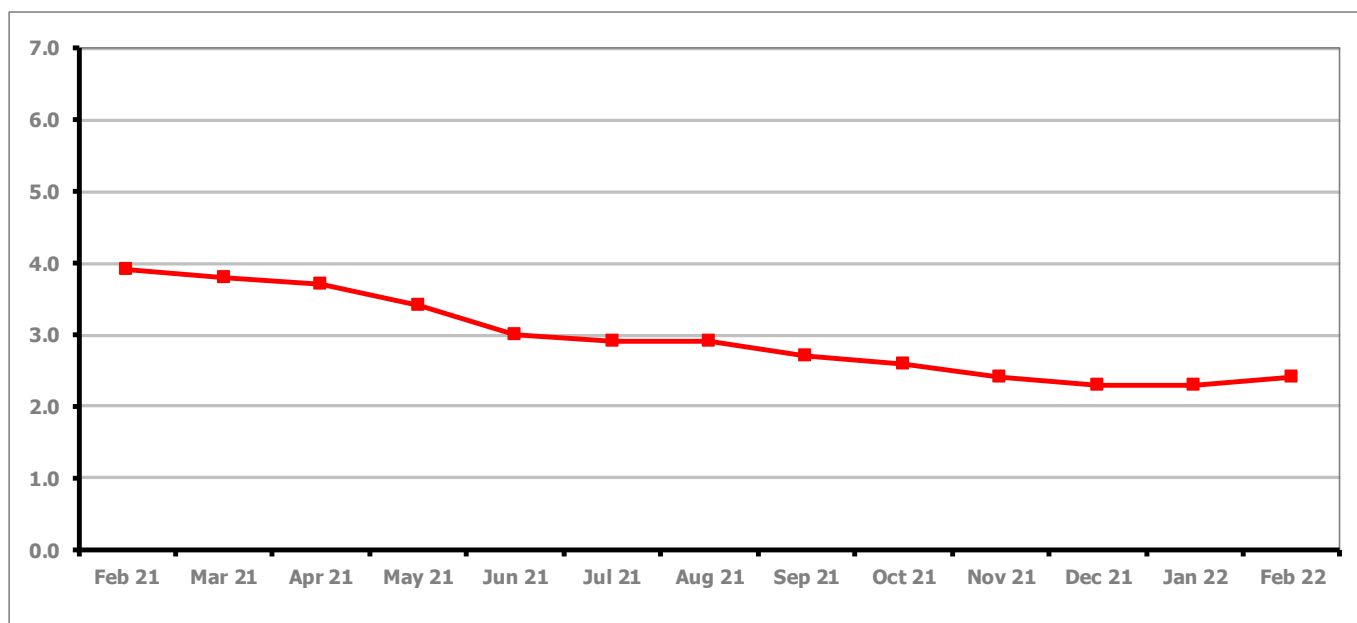


Figure 13 shows the claimant rate for Tewkesbury Borough increased to 2.4% in February 2022.

Figure 14: Claimant rates across Tewkesbury Borough wards - February 2022

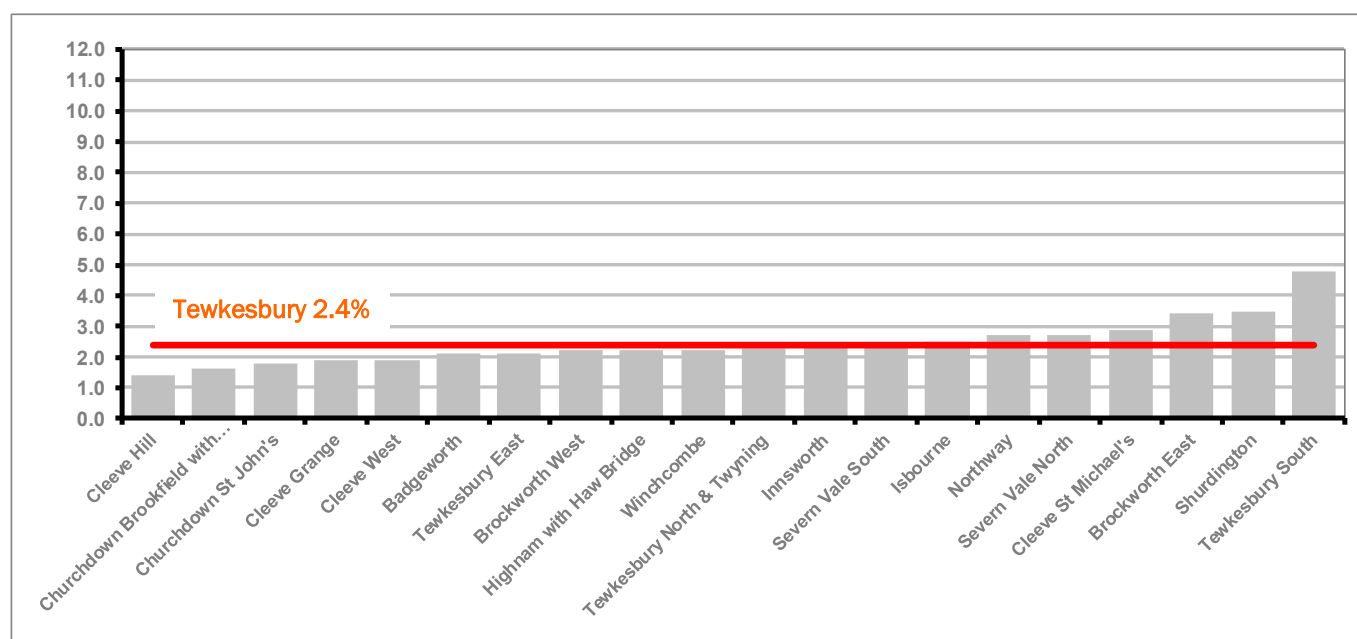


Figure 14 shows the claimant rates in Tewkesbury Borough wards. The red line represents the average claimant rate across the District of 2.4%. Seven wards are above the average.



## PART 4: LOCAL AUTHORITY AND DISTRICT ANALYSIS

### 4.6 Tewkesbury Borough continued...

Table 10: Analysis of Claimant Count at Tewkesbury Borough level - February 2022

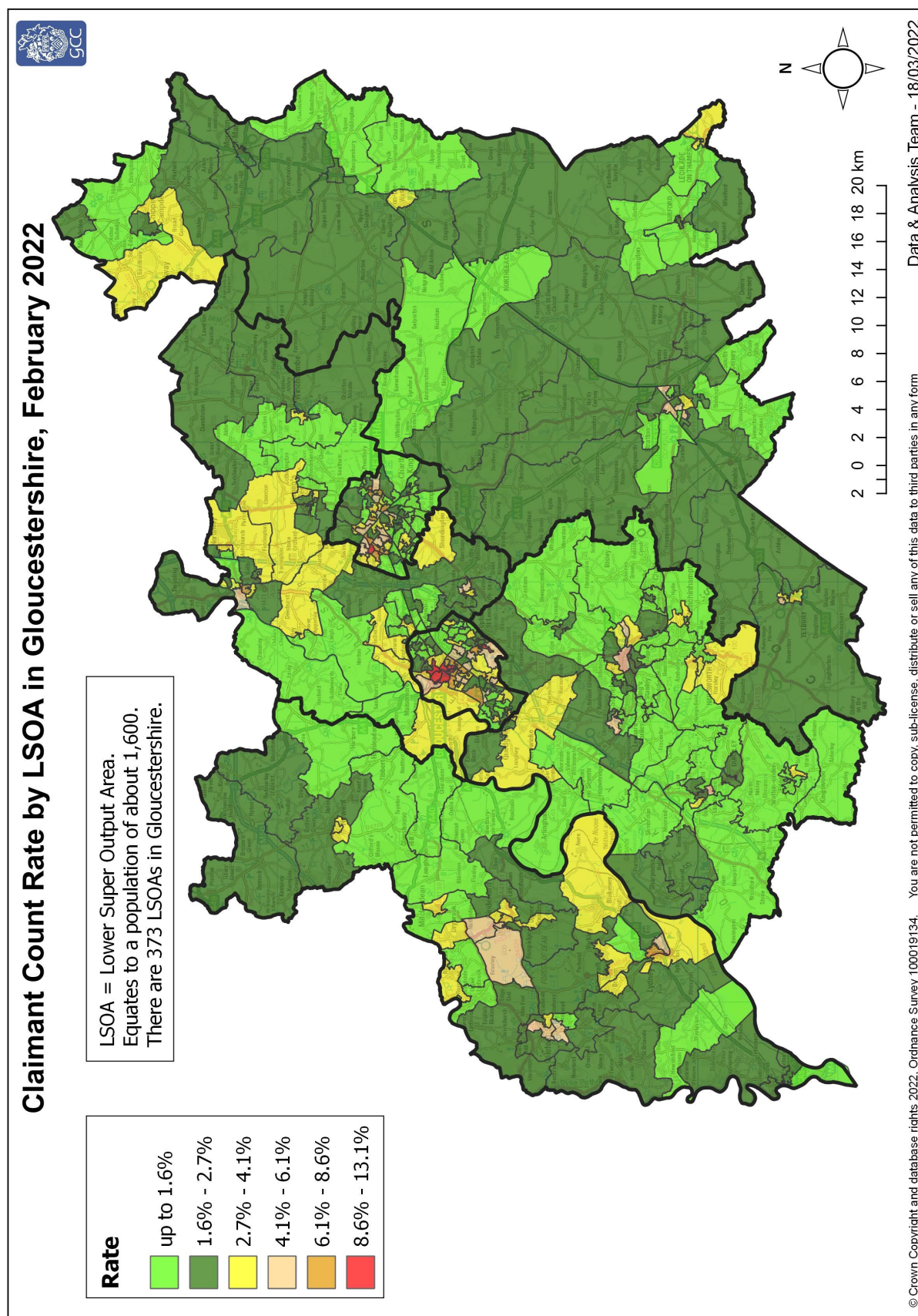
District	Ward	Rate	Rank*
Tewkesbury	Cleeve Hill	1.4	17
Tewkesbury	Churchdown Brookfield with Hucclecote	1.6	25
Tewkesbury	Churchdown St John's	1.8	38
Tewkesbury	Cleeve Grange	1.9	46
Tewkesbury	Cleeve West	1.9	46
Tewkesbury	Badgeworth	2.1	58
Tewkesbury	Tewkesbury East	2.1	58
Tewkesbury	Brockworth West	2.2	66
Tewkesbury	Highnam with Haw Bridge	2.2	66
Tewkesbury	Winchcombe	2.2	66
Tewkesbury	Tewkesbury North & Twynning	2.3	74
Tewkesbury	Innsworth	2.4	84
Tewkesbury	Severn Vale South	2.4	84
Tewkesbury	Isbourne	2.5	88
Tewkesbury	Northway	2.7	94
Tewkesbury	Severn Vale North	2.7	94
Tewkesbury	Cleeve St Michael's	2.9	101
Tewkesbury	Brockworth East	3.4	110
Tewkesbury	Shurdington	3.5	114
Tewkesbury	Tewkesbury South	4.8	124

	lowest 10% of county
	first quartile of county
	second quartile of county
	third quartile of county
	fourth quartile of county
	highest 10% of county

\* 1 = "best" and 138 = "worst"

Table 10 shows overall claimant rates for Tewkesbury Borough wards and their position relative to all wards in Gloucestershire.

## PART 5: MAP SHOWING DISTRIBUTION OF CLAIMANT RATE ACROSS GLOUCESTERSHIRE

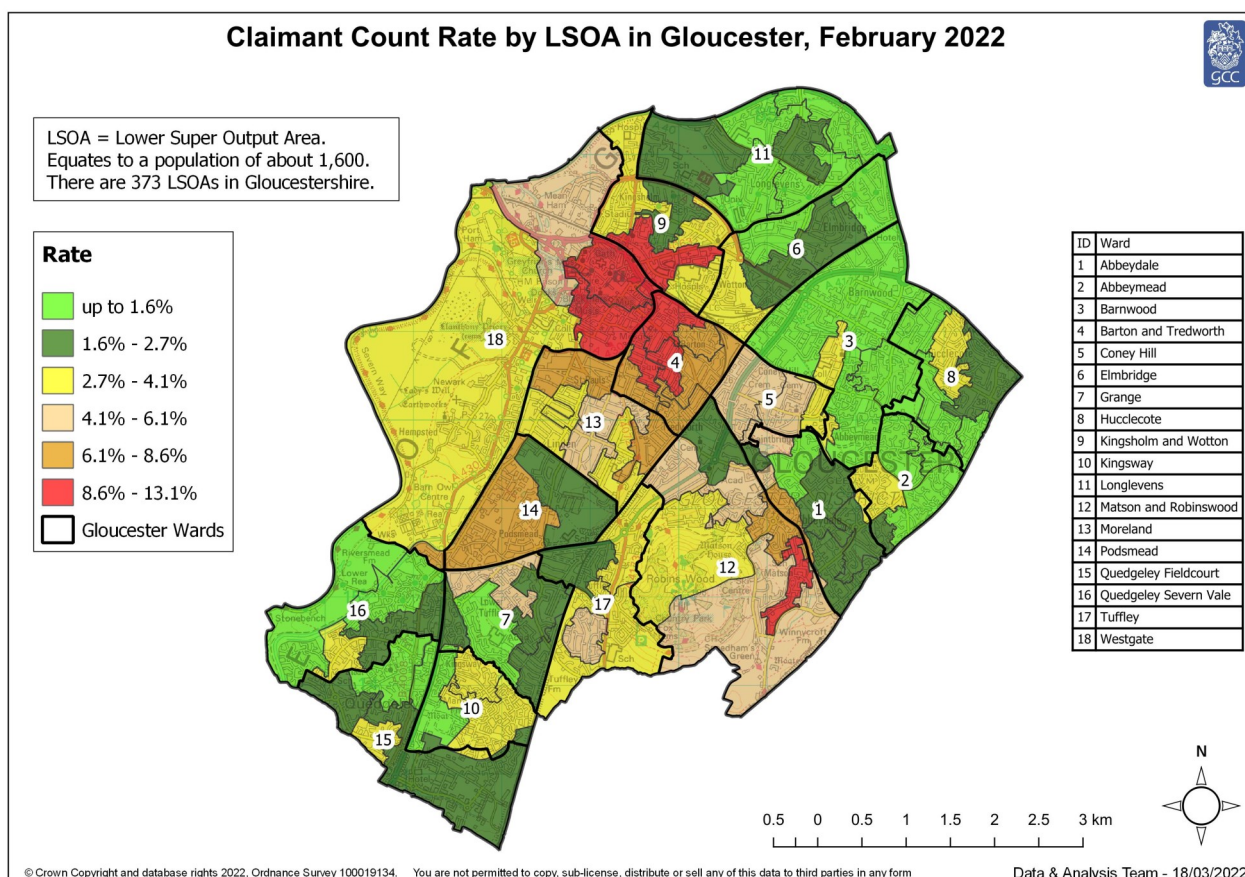
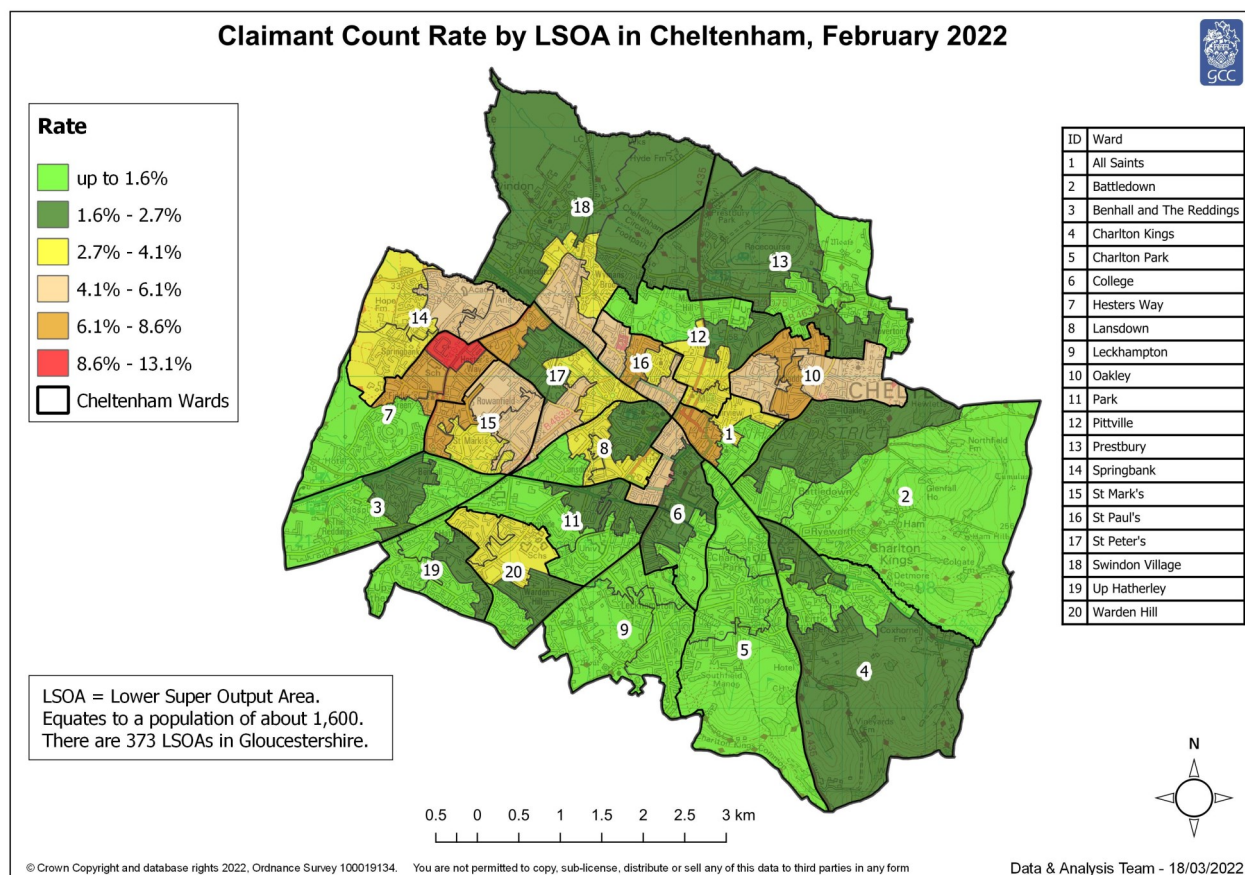


Note: We have made changes to the way in which the rates illustrated on the maps are calculated - this means they are not comparable with those shown in previous bulletins.

Rates calculated using Lower Layer Super Output Area Population Estimates Mid-2019, Office for National Statistics



## PART 5: MAP SHOWING DISTRIBUTION OF CLAIMANT RATE ACROSS GLOUCESTERSHIRE



Note: We have made changes to the way in which the rates illustrated on the maps are calculated - this means Rates calculated using Lower Layer Super Output Area Population Estimates Mid-2019, Office for National Statistics

## PART 6: YOUTH UNEMPLOYMENT(18-24 year olds)

### Youth Claimant Rate and Claimant Count

Figure 15: Claimant Count for Gloucestershire over the past year

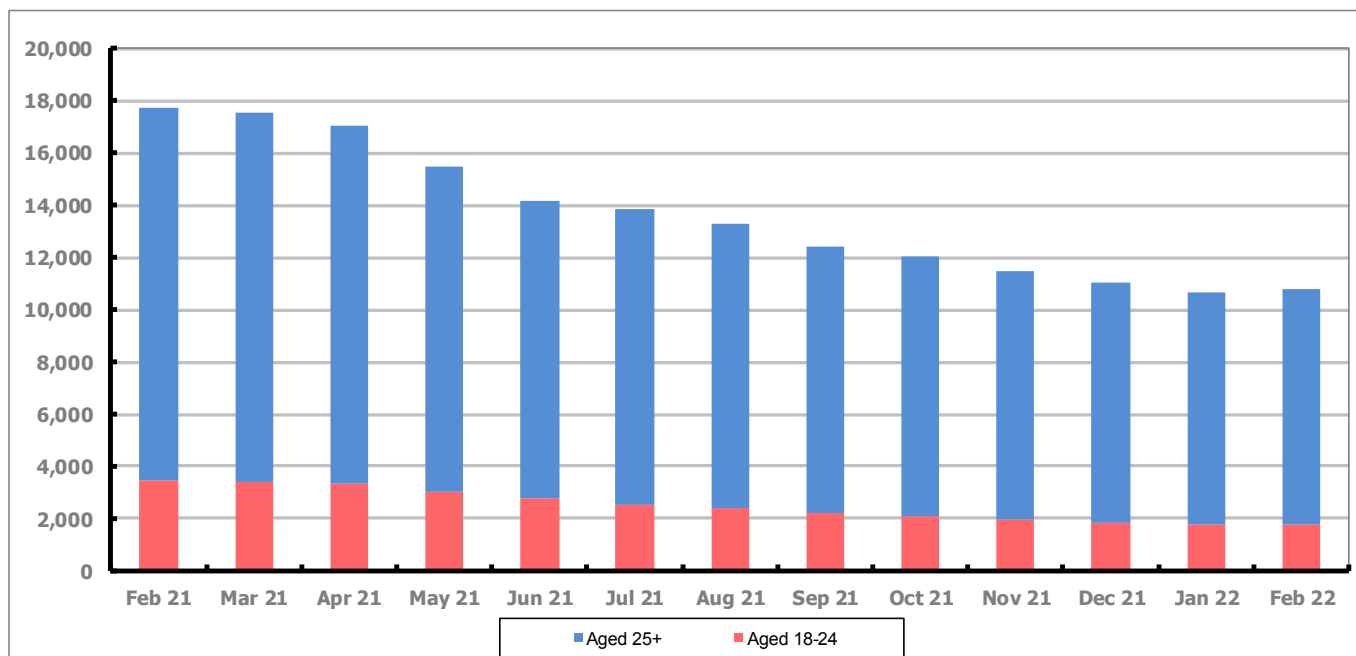


Figure 15 shows that in February 2022, 1,780 people aged 18-24 were claiming Job Seekers Allowance and Universal Credit who were not in work in Gloucestershire, this represents 16.5% of total working age claimants.

## PART 7: YOUNG PEOPLE NOT IN EDUCATION, EMPLOYMENT OR TRAINING (NEET) IN GLOUCESTERSHIRE

Data provided by Gloucestershire Youth Support Team on the situation of young people (16-18) in Gloucestershire who are not in education, employment or formal training.

Gloucestershire Youth Support Team is required to report performance on the Academic Year 12 and 13 (16/17 age) against nationally defined criteria for counting the NEET group to the Department for Education (DfE) on a monthly basis. The NEET group includes young people actively seeking education, employment or training as well as those young people who are either not yet ready or who are unable to access these opportunities because of their personal circumstances. The figures quoted below include young people in both of these categories.

February 2022

### Academic Year 12-13 Summary

	NEET	Cohort	%
Cheltenham	46	2078	2.21%
Cotswold	22	1680	1.31%
Forest	38	1727	2.20%
Gloucester	107	3016	3.55%
Stroud	49	2583	1.90%
Tewkesbury	33	1958	1.69%
Total	295	13042	2.26%

### 16-18 Age Summary

	NEET	Cohort	%
Cheltenham	60	2682	2.24%
Cotswold	28	2145	1.31%
Forest	50	2163	2.31%
Gloucester	153	3785	4.04%
Stroud	57	3284	1.74%
Tewkesbury	43	2464	1.75%
Total	391	16523	2.37%

16-18 Adjust NEET*	2.55%
--------------------	-------

Monthly Change	3	9	0.02%
Previous month	292	13033	2.24%

Monthly Change	-4	-444	0.04%
Previous month	395	16967	2.33%

The academic year 12-13 group contains a proportion of young people who turn 18 in the academic year but were 17 on the 31<sup>st</sup> August the previous academic year so are entitled to learning through RPA (raising participation age).

Please note all figures quoted above are subject to change before the submission date to the DfE which usually happens in the second or third week of the month for the previous month.

If you would like to receive any further information on Gloucestershire's NEET strategy, then please contact [Lynne.Speak@Prospects.co.uk](mailto:Lynne.Speak@Prospects.co.uk) or telephone 07900 391182.

(\*) Adjustment includes a proportion of young people aged 16-18 whose outcomes are not-known to Gloucestershire Youth Support Team.