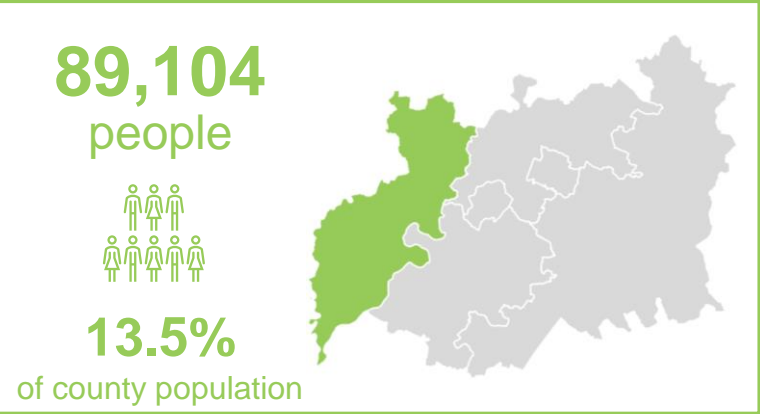


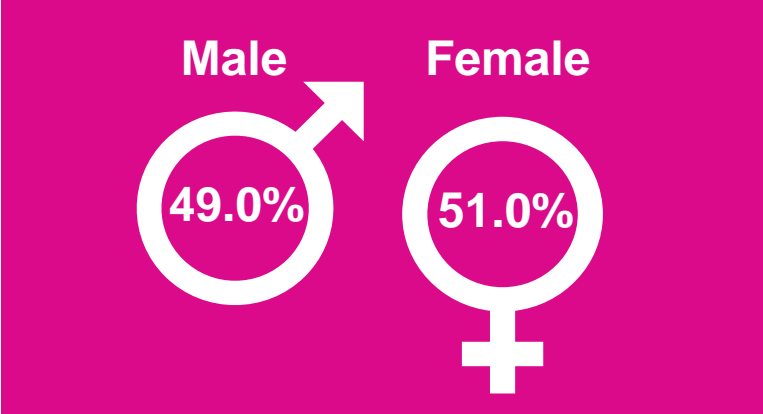
Equalities Fact Sheet 2025

Forest of Dean

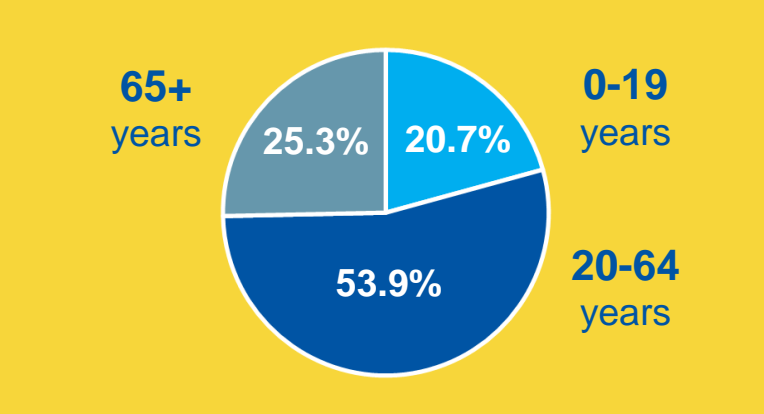
Population



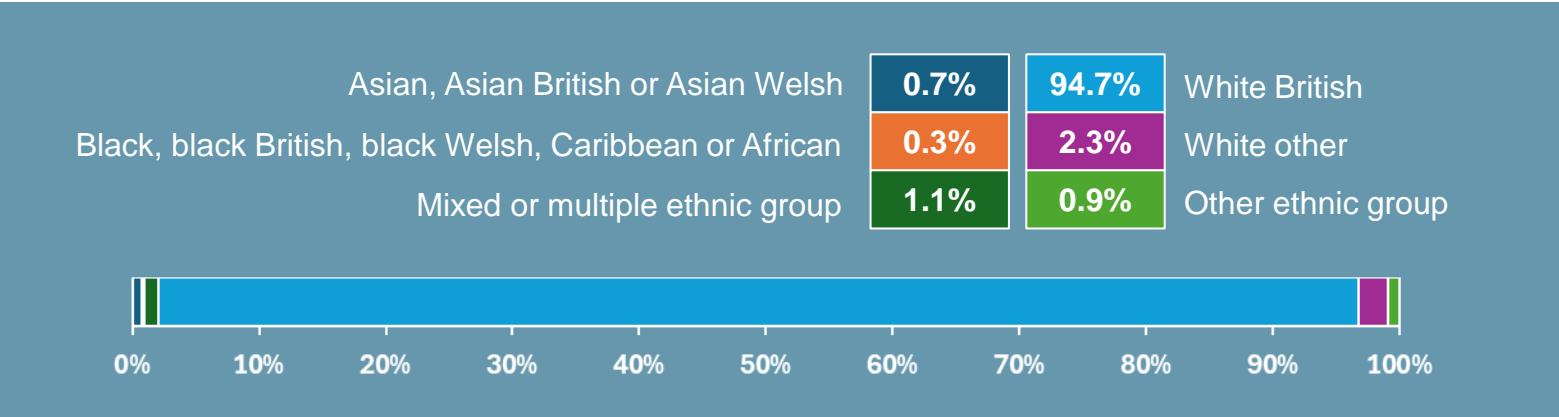
Sex



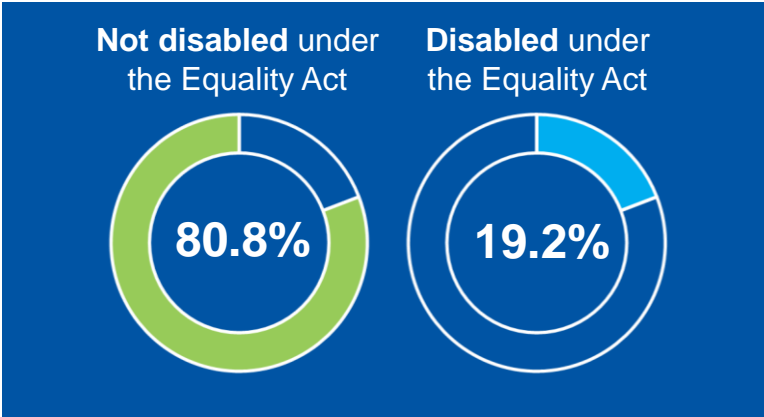
Age



Ethnic groups



Disability



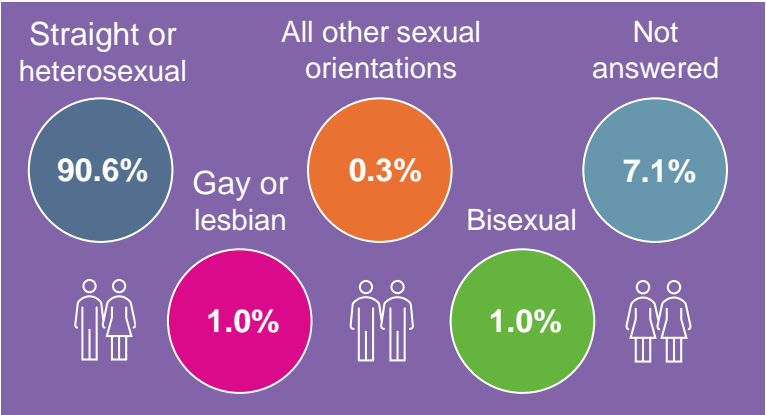
Equalities Fact Sheet 2025

Forest of Dean

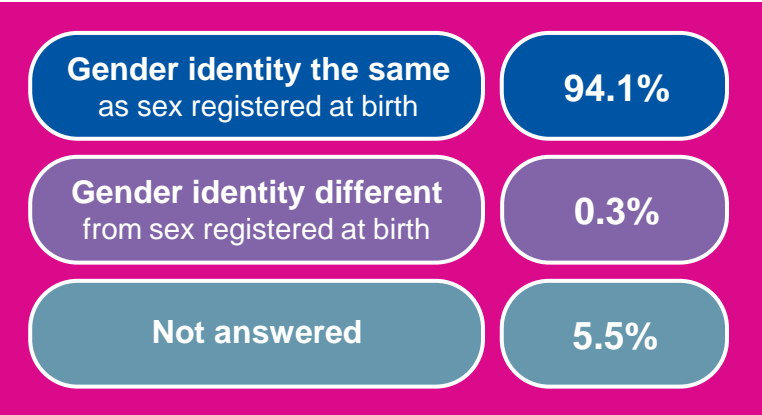
Marriage and civil partnership

Married or in a registered civil partnership	49.6%
Never married and never registered in a civil partnership	31.4%
Divorced or civil partnership dissolved	9.9%
Widowed or surviving civil partnership partner	7.1%
Separated , but still legally married or still legally in a civil partnership	2.0%

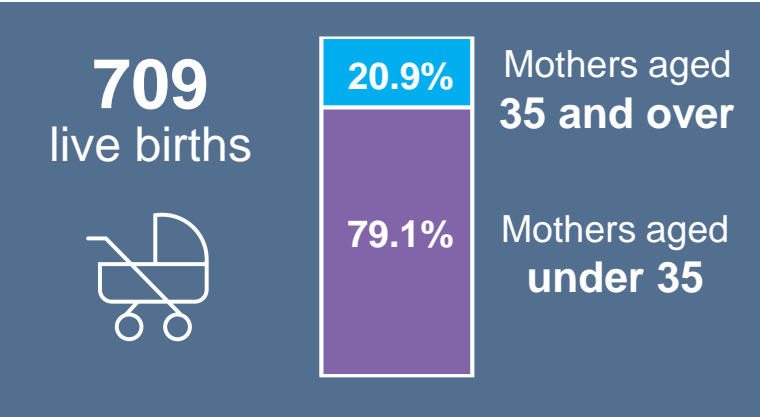
Sexual orientation



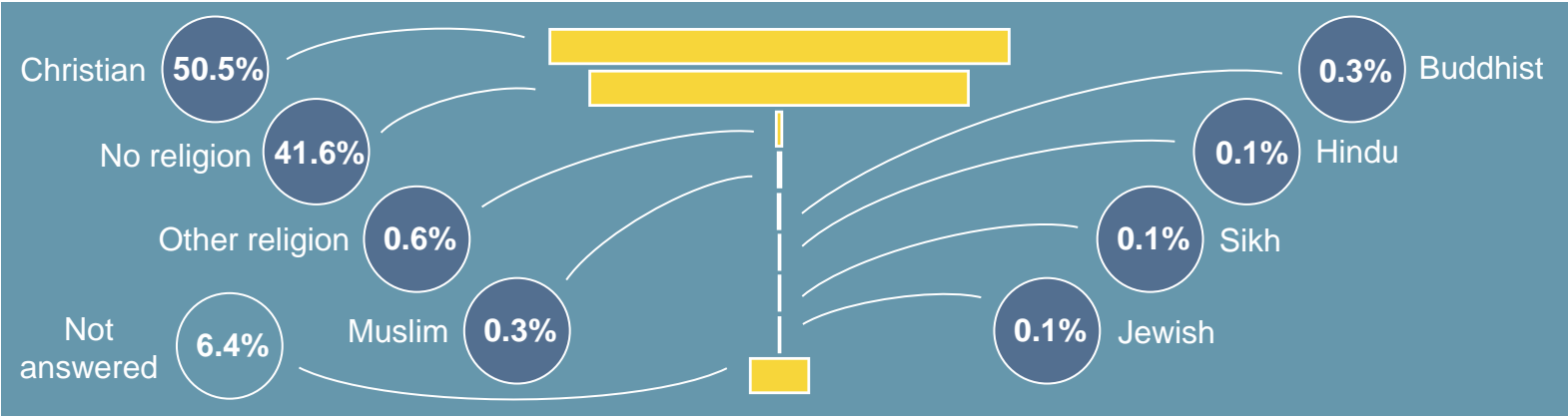
Gender identity



Pregnancy and maternity



Religion or belief



Equalities Fact Sheet 2025

Forest of Dean

Data sources

Population: Office for National Statistics (ONS), Mid-year population estimates 2023

Sex: Office for National Statistics (ONS), Mid-year population estimates 2023

Age: Office for National Statistics (ONS), Mid-year population estimates 2023

Ethnic groups: Census 2021

Disability: Census 2021

Marriage and civil partnership: Census 2021

Sexual orientation: Census 2021

Gender identity: Census 2021

Pregnancy and maternity: Office for National Statistics (ONS), Live births 2023

Religion or belief: Census 2021

All of the above data can be found at: <https://www.nomisweb.co.uk>

Further resources:

Population Analysis of Protected Characteristics in Gloucestershire: [Overview](#) | [Inform Gloucestershire](#)