



KNIGHTS BROWN

A419 STONEHOUSE JUNCTION IMPROVEMENTS

UPDATE 1 : MARCH—APRIL 2019

PROJECT UPDATE



We have now been on site for just over a month and we have begun construction on phase one of the scheme at Chipmans Platt roundabout.

Our compound and site accommodation have now been set up at Chipmans Platt too.

We have installed new telecoms ducts on the crossing beneath the A419 and Springhill.

The majority of our work to date has been overnight as we continue to prepare for widening the road. Once this work is complete we will be switching from night time working under traffic lights to day time working behind barriers.

We are currently on programme and progressing well with works.



MATERIALS ON SITE FOR
CHIPMANS PLATT WORKS



WESTBOUND TOP SOIL
STRIP AND SLEWING FOR
BT DUCTS



BT DUCTS AND MANHOLE
INSTALLATION COMPLETED



EXIT VERGE KERBS HAVE
BEEN INSTALLED



SITE COMPOUND HAS BEEN SET UP

ATKINS

Member of the SNC-Lavalin Group



Gloucestershire

COUNTY COUNCIL



KNIGHTS BROWN

<https://www.gloucestershire.gov.uk/highways/major-projects-list/a419-highway-improvements/>

CHIPMANS PLATT—PHASE 1

Phase 1 Construction works will include:

- Carriageway widening
- Footway widening
- Upgrading of lighting columns
- Upgraded signage
- Upgraded cycleway
- Resurfacing of the roundabout and approaches



COMMUNITY ENGAGEMENT

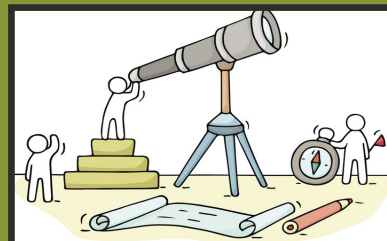


Thank you to everyone who attended our **'Meet the Contractor'** events in March. Both events were well attended and it was a fantastic opportunity for us to introduce you to our company and share further information on the works that we will be doing.

Over the next month we will working on:

- Utility crossings
- Drainage works
- Carriageway construction

LOOK AHEAD PROGRAMME



TRAFFIC MANAGEMENT

No construction work over the Easter Bank Holiday



To date the majority of our works have been done at night to limit disruption. We will be working overnight under traffic lights throughout April and May.

In June we will begin working during the day. For safety of our crews we will need to make lanes narrower so they can widen the carriage behind barriers.



If you would like further information on the scheme please contact us
Email: talktous@knightsbrown.co.uk
Public liaison office - 07818 432183 Site contact : 07775 903923
24 hour emergency contact - 07544 531851