



KNIGHTS BROWN

A419 STONEHOUSE JUNCTION IMPROVEMENTS

UPDATE 2: 29/03/2019—12/05/2019

PROJECT UPDATE



Works are progressing well on phase one of the A419 Highway Improvement Scheme at Chipmans Platt. We have been busy working at night to try and ensure we cause minimal disruption to the road network. If it looks quiet during the day, please be assured it is not because we're not working hard, it is because we're getting our beauty sleep ready for the following evening!

All works to date have been delivered in line with our programme of works.

Within the past fortnight we have completed the following works:

- Drainage works in the westbound exit verge
- Installed BT Ducts in the westbound exit verge
- Installed new BT cables on Spring Hill Road
- Footpath widening works on Spring Hill Rd
- Footpath and carriageway widening works on the eastbound exit verge
- A Street lighting crossing and chamber has been installed on Grove Lane
- New road drainage and street lighting ducts installed on Grove Lane



DRAINAGE WORKS IN
WESTBOUND EXIT VERGE



BT DUCTS IN WESTBOUND
VERGE



BT INSTALLING NEW CABLES ON
SPRING HILL ROAD



KNIGHTS BROWN

<https://www.gloucestershire.gov.uk/highways/major-projects-list/a419-highway-improvements/>



SPRING HILL ROAD FOOTPATH
WIDENING WORKS



STREET LIGHT ROAD DUCT
CROSSING & ROAD DRAINAGE
GULLY ON GROVE LANE

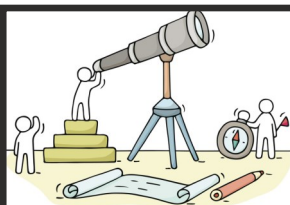


STREET LIGHTING CROSSING &
CHAMBER ON GROVE LANE

LOOK AHEAD PROGRAMME

Over the next month we will be working on:

- Spring Hill lane footpath works
- Deep drainage works on Chipmans Platt roundabout
- Continuation of carriageway duct crossings
- Works to install new Toucan crossing on the A419 eastbound



EASTBOUND FOOTPATH &
CARRIAGEWAY WIDENING
BEFORE SURFACING

TRAFFIC MANAGEMENT

No construction work will take place over the May Bank Holiday Weekends

We will continue overnight under traffic lights throughout May. In June we will begin working during the day. This will involve narrowing lanes so we can begin road widening works behind barriers.



EASTBOUND FOOTPATH &
CARRIAGEWAY WIDENING
AFTER SURFACING



If you would like further information on the scheme please contact us

Email: talktous@knightsbrown.co.uk

Public liaison office - 07818 432183 Site contact : 07775 903923

24 hour emergency contact - 07544 531851