

Unemployment Bulletin

Issue 176 March 2023

Notes on Claimant Count (Experimental Statistics) from ONS:

These Claimant Count Experimental Statistics relate to 09 March 2023. Enhancements to Universal Credit as part of the UK government's response to the coronavirus (COVID-19) mean that an increasing number of people became eligible for unemployment-related benefit support, although still employed. Consequently changes in the Claimant Count will not be wholly because of changes in the number of people who are unemployed. We are not able to identify to what extent people who are employed or unemployed have affected the numbers.

Contents

Part 1: Summary	1
A summary of unemployment data at district, County, regional and national level	
Part 2: County	3
Unemployment figures for the County compared to the South West and the rest of the UK	
Part 3: Districts	4
A comparative break down of unemployment figures by district	
Part 4: Wards	
Further breakdown of unemployment figures by ward:	
Cheltenham	6
Cotswolds	8
Forest of Dean	10
Gloucester	12
Stroud	14
Tewkesbury	16
Part 5: Map	18
Distribution of claimant rate across Gloucestershire	
Part 6: Youth Unemployment	20
Unemployment data for the 18-24 year old age group	
Part 7: Young People	21
Data about Young People Not in Education, Employment or Training (NEET)	

The Claimant Count is a measure of the number of people who are unemployed and claiming benefits. From 1996 until the recent introduction of Universal Credit, this was based on the number of people claiming Jobseeker's Allowance. However, since its introduction some unemployment benefit claimants will be claiming Universal Credit instead. **To reflect this change, the Claimant Count has been expanded to include people claiming Jobseeker's Allowance plus those who claim Universal Credit and who are searching for work.**

Gloucestershire is in the process of transitioning to full Universal Credit. This means a broader span of claimants will be required to look for work than previously under Jobseekers Allowance. As more people are brought within the coverage of Universal Credit, the Claimant Count is set to rise noticeably over time. This will happen irrespective of how the economy performs and is a feature of the design of Universal Credit which brings additional groups of people into 'Searching for Work' conditionality (and therefore the Claimant Count), to help encourage and support these claimants into work.

For more information about Universal Credit please see the [ONS website](https://www.ons.gov.uk/universal-credit).

INTRODUCTION

The Unemployment Bulletin provides a monthly update on unemployment data for Gloucestershire, the South West region and the United Kingdom. It is produced by the Data & Analysis Team in the County Council's Planning, Performance and Change function. The data are sourced from the Office for National Statistics via Nomis (www.nomis.co.uk). All data are rounded to the nearest 5 and may not precisely add to the sum of the number of people claiming JSA, and the number of people claiming Universal Credit required to seek work, due to independent rounding.

PART 1: SUMMARY

The claimant rate in Gloucestershire was 2.3% in March 2023. The South West rate remained at 2.5% while the UK rate increased to 3.7%. Gloucestershire's rate was 0.2% lower than the South West average of 2.5%, and 1.4% lower than the UK average of 3.7%.

The claimant count in Gloucestershire in March 2023 increased by 230 people. The amount of people claiming in March 2023 was 2.6% higher than the number in February 2023. This compares to a 1.3% increase in the South West and a 3.3% increase in the UK.

Produced by:

Data & Analysis Team
Planning, Performance and Change
Gloucestershire County Council
April 2023

DISTRICTS AT A GLANCE

At a glance unemployment information grouped by district. Includes:

Claimant count: Total number of people claiming Job Seekers Allowance and Universal Credit who are not in work in March 2023

Claimant count change on previous month: How much larger/smaller March's claimant count is compared to February expressed as a %

Claimant rate: The % of working age population claiming Job Seekers Allowance and Universal Credit who are not in work in March 2023

Highest claiming ward: The ward with the highest claim count in that district and the rate

CHELTEMHAM BOROUGH

Claimant count:	1,845
Claimant count change on previous month:	4.2%
Claimant rate:	2.4%
Highest claiming ward(s)	Oakley (4.9%)

GLOUCESTER CITY

Claimant count:	2,700
Claimant count change on previous month:	5.5%
Claimant rate:	3.2%
Highest claiming ward(s)	Westgate (6.8%)

COTSWOLD DISTRICT

Claimant count:	920
Claimant count change on previous month:	1.1%
Claimant rate:	1.7%
Highest claiming ward(s)	Watermoor (3.4%)

STROUD DISTRICT

Claimant count:	1,155
Claimant count change on previous month:	-2.1%
Claimant rate:	1.6%
Highest claiming ward(s)	Stroud Central (4.1%)

FOREST OF DEAN

Claimant count:	1,260
Claimant count change on previous month:	1.2%
Claimant rate:	2.5%
Highest claiming ward(s)	Lydney East (4.8%)

TEWKESBURY BOROUGH

Claimant count:	1,135
Claimant count change on previous month:	1.3%
Claimant rate:	2.0%
Highest claiming ward(s)	Tewkesbury South (3.9%)

PART 2: UK, SW AND GLOUCESTERSHIRE INDICATORS

The unemployment situation in Gloucestershire compared to the South West and the UK.

Claimant Rate

Figure 1: Claimant Rate for Gloucestershire, the South West and UK over the past year

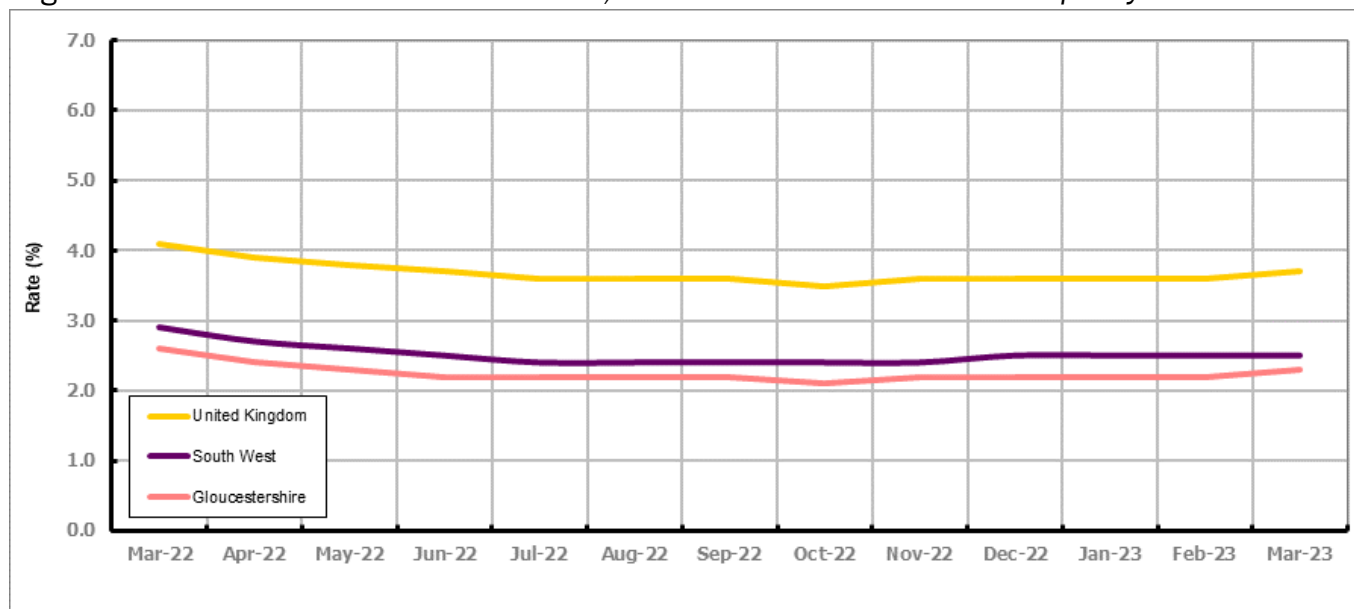


Figure 1 shows the claimant rate for Gloucestershire at 2.3% in March 2023. The Gloucestershire rate has been lower than the South West average since December 2015, with the exception of April and May 2016 when it was the same. On average, it has been approximately 1.4% lower than the UK average since the same month of the previous year.

Claimant Count

Table 1: Analysis of UK, South West and Gloucestershire Claimant Counts

Area	Claimant Count in March 2023	% change on February 2023	Consecutive months increasing
UK	1,576,390	3.3%	1
South West	87,875	1.3%	1
Gloucestershire	9,015	2.6%	1

Table 1 shows that in March 2023, the number of claimants in Gloucestershire was 2.6% higher than the number in February 2023.

PART 3: LOCAL AUTHORITY DISTRICT ANALYSIS

Claimant Rate and Claimant Count

Figure 2: Claimant Rate (%) across Gloucestershire - March 2023

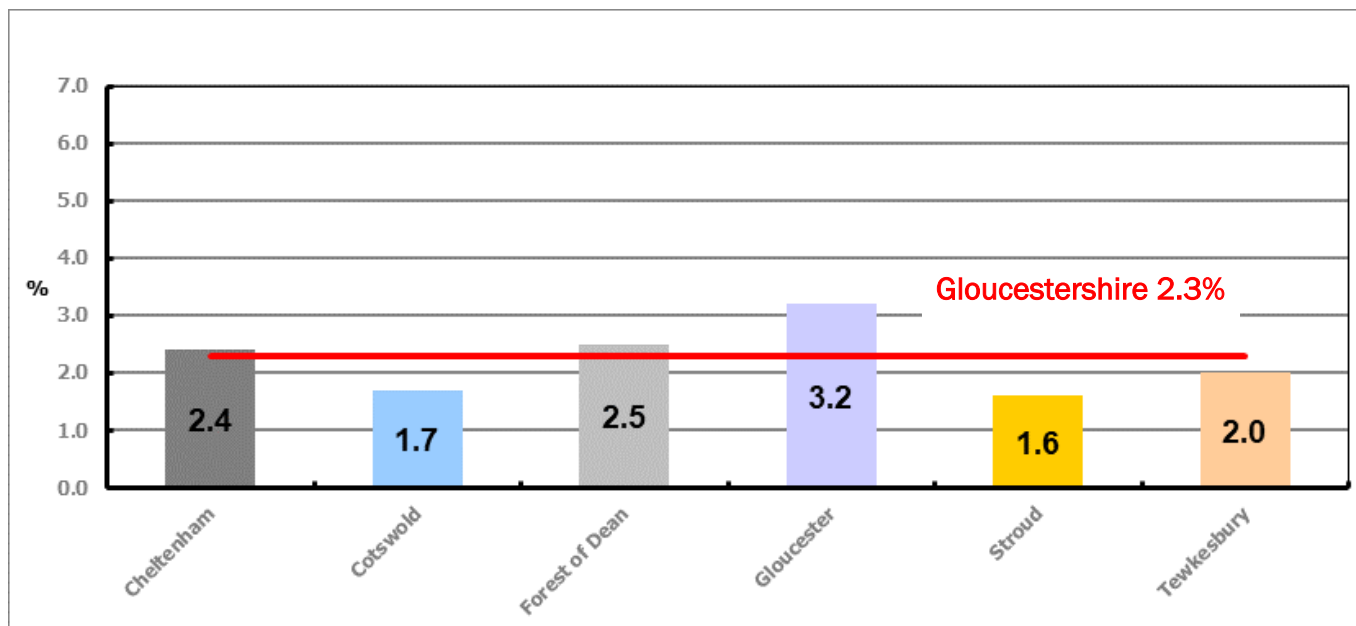


Figure 2 shows the claimant rate for March 2023 in Gloucestershire. Between February and March 2023 the rate increased in Cheltenham, Forest of Dean and Gloucester. The rate in all other districts remained the same.

Table 2: Analysis of Gloucestershire and District Claimant Counts

Total	Mar 23 Number	Mar 23 Rate	Feb 23 Number	Feb 23 Rate	Monthly change	% monthly change	Monthly change of rate
Gloucestershire	9,015	2.3	8,785	2.2	230	2.6%	0.1
Cheltenham	1,845	2.4	1,770	2.3	75	4.2%	0.1
Cotswold	920	1.7	910	1.7	10	1.1%	0.0
Forest of Dean	1,260	2.5	1,245	2.4	15	1.2%	0.1
Gloucester	2,700	3.2	2,560	3.0	140	5.5%	0.2
Stroud	1,155	1.6	1,180	1.6	-25	-2.1%	0.0
Tewkesbury	1,135	2.0	1,120	2.0	15	1.3%	0.0

Table 2 shows the change in the claimant count in March 2023 compared to February 2023. All districts saw an increase in the number of claimants except Stroud which saw a decrease.

Table 3: Analysis of Male Gloucestershire and District Claimant Counts

Male	Mar 23 Number	Mar 23 Rate	Feb 23 Number	Feb 23 Rate	Monthly change	% monthly change	Monthly change of rate
Gloucestershire	4,990	2.6	4,915	2.5	75	1.5%	0.1
Cheltenham	1,085	2.9	1,075	2.9	10	0.9%	0.0
Cotswold	465	1.8	460	1.8	5	1.1%	0.0
Forest of Dean	655	2.6	645	2.5	10	1.6%	0.1
Gloucester	1,615	3.8	1,525	3.6	90	5.9%	0.2
Stroud	585	1.6	610	1.7	-25	-4.1%	-0.1
Tewkesbury	590	2.2	600	2.2	-10	-1.7%	0.0

Table 3 shows the change in the male claimant count in March 2023 compared to February 2023. All districts saw an increase in the number of male claimants except Stroud and Tewkesbury which saw a decrease.

Table 4: Analysis of Female Gloucestershire and District Claimant Counts

Female	Mar 23 Number	Mar 23 Rate	Feb 23 Number	Feb 23 Rate	Monthly change	% monthly change	Monthly change of rate
Gloucestershire	4,020	2.0	3,870	1.9	150	3.9%	0.1
Cheltenham	760	2.0	690	1.8	70	10.1%	0.2
Cotswold	460	1.7	450	1.6	10	2.2%	0.1
Forest of Dean	605	2.3	605	2.3	0	0.0%	0.0
Gloucester	1,085	2.6	1,040	2.4	45	4.3%	0.2
Stroud	570	1.5	570	1.5	0	0.0%	0.0
Tewkesbury	545	1.9	520	1.8	25	4.8%	0.1

Table 4 shows the change in the female claimant count in March 2023 compared to February 2023. All districts saw an increase in the number of female claimants except Forest of Dean and Stroud which remained the same.

PART 4: LOCAL AUTHORITY DISTRICT AND WARD ANALYSIS

This section covers the six districts and a comparison of their constituent wards.

4.1 Cheltenham Borough

Claimant Rate and Claimant Count

Figure 3: Cheltenham Borough claimant rate over the last year

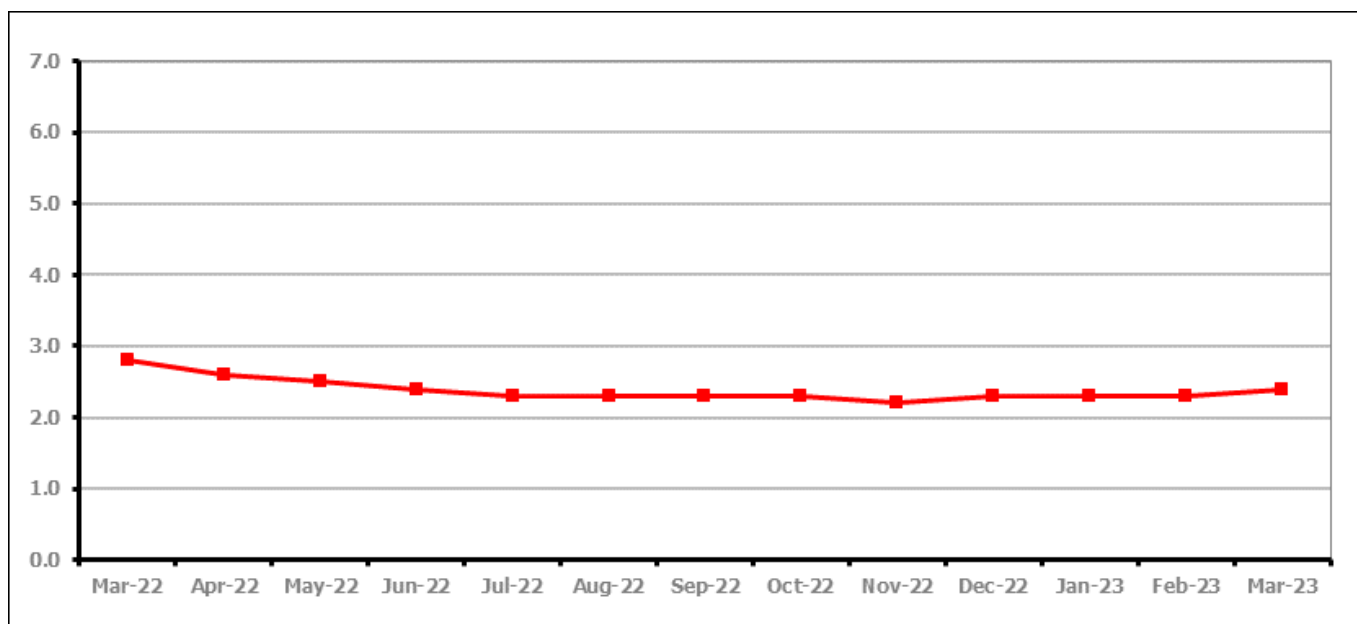


Figure 3 shows the claimant rate in Cheltenham increased to 2.4% in March 2023.

Figure 4: Claimant rates across Cheltenham Borough wards - March 2023

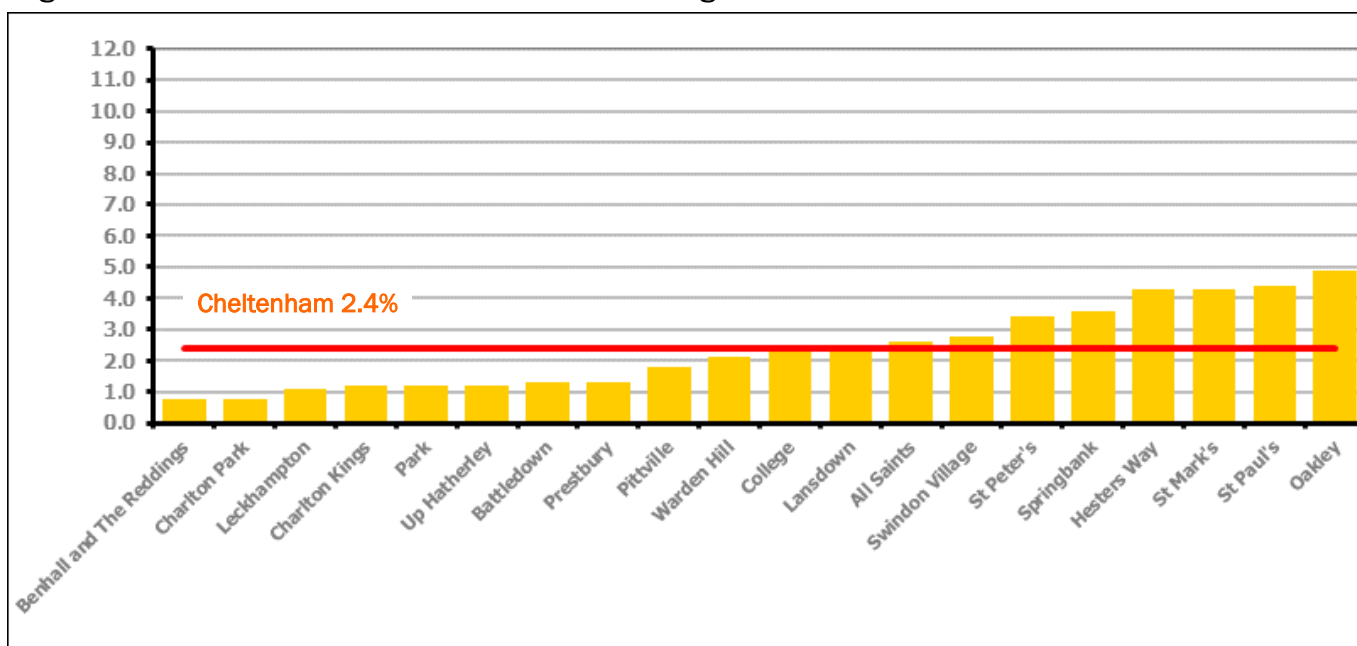


Figure 4 shows the claimant rates for Cheltenham Borough wards. The red line represents the average claimant rate across the Borough of 2.4%. Eight wards lie above the average.

PART 4: LOCAL AUTHORITY DISTRICT AND WARD ANALYSIS

4.1 Cheltenham Borough continued...

Table 5: Analysis of Claimant Count at Cheltenham Borough ward level - March 2023

District	Ward	Rate	Rank*
Cheltenham	Benhall and The Reddings	0.8	1
Cheltenham	Charlton Park	0.8	1
Cheltenham	Leckhampton	1.1	11
Cheltenham	Charlton Kings	1.2	17
Cheltenham	Park	1.2	17
Cheltenham	Up Hatherley	1.2	17
Cheltenham	Battledown	1.3	28
Cheltenham	Prestbury	1.3	28
Cheltenham	Pittville	1.8	65
Cheltenham	Warden Hill	2.1	84
Cheltenham	College	2.3	97
Cheltenham	Lansdown	2.4	103
Cheltenham	All Saints	2.6	108
Cheltenham	Swindon Village	2.8	114
Cheltenham	St Peter's	3.4	120
Cheltenham	Springbank	3.6	122
Cheltenham	Hesters Way	4.3	126
Cheltenham	St Mark's	4.3	126
Cheltenham	St Paul's	4.4	128
Cheltenham	Oakley	4.9	134

	lowest 10% of county
	first quartile of county
	second quartile of county
	third quartile of county
	fourth quartile of county
	highest 10% of county

* 1 = "best" and 138 = "worst"

Table 5 shows overall claimant rates for Cheltenham Borough wards and their position relative to all wards in Gloucestershire.

PART 4: LOCAL AUTHORITY DISTRICT AND WARD ANALYSIS

4.2 Cotswold District

Claimant Rate and Claimant Count

Figure 5: Cotswold District claimant rate over the last year

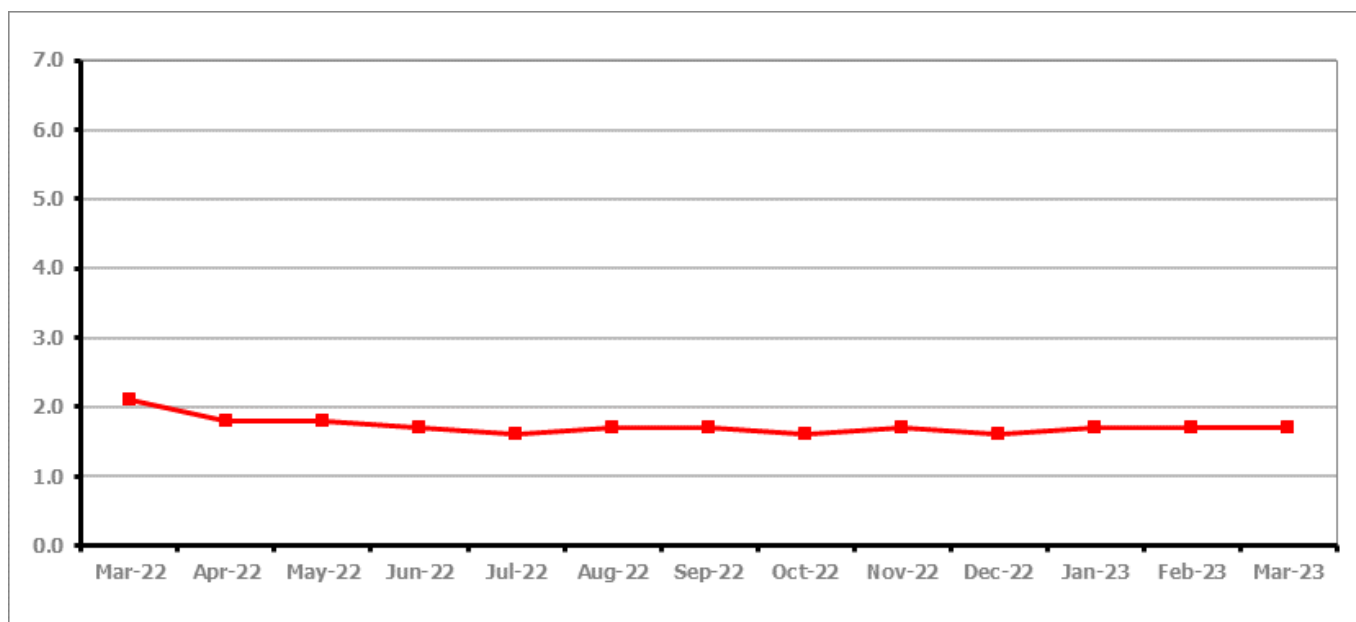


Figure 5 shows the claimant rate in Cotswold District remained at 1.7% in March 2023.

Figure 6: Claimant rates across Cotswold District wards - March 2023

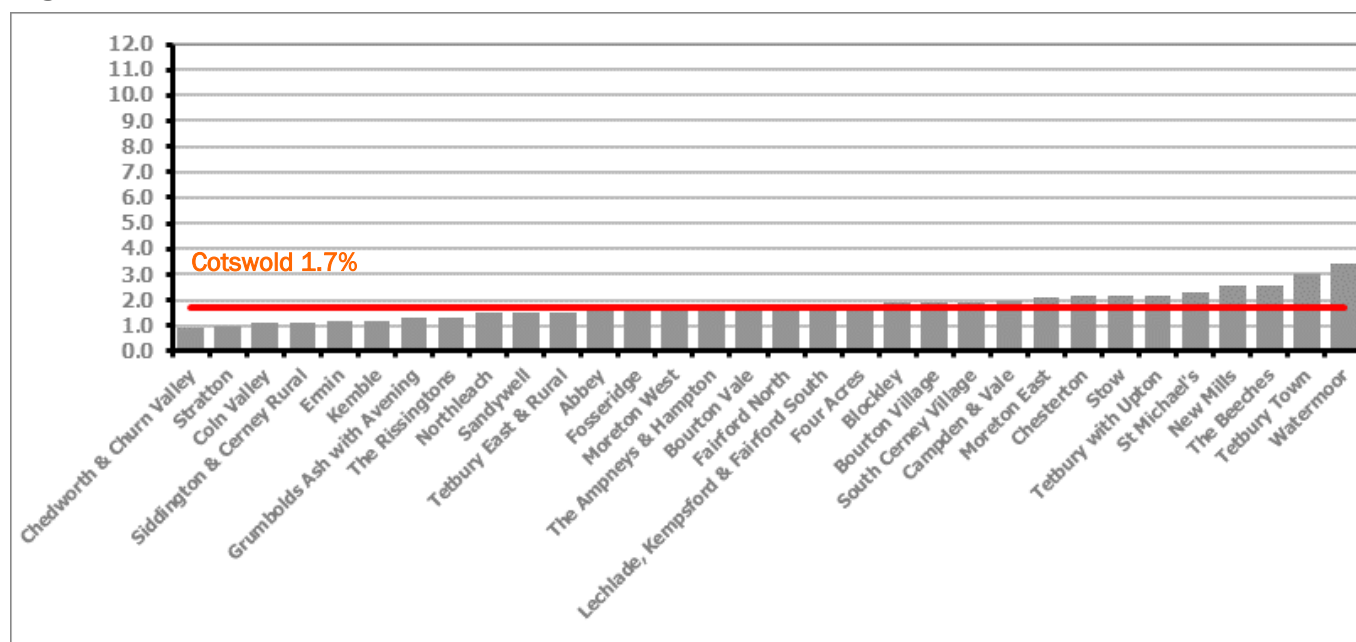


Figure 6 shows the claimant rates for Cotswold District wards. The red line represents the average claimant rate across the District of 1.7%. Fourteen wards lie above the average.

PART 4: LOCAL AUTHORITY DISTRICT AND WARD ANALYSIS

4.2 Cotswold District continued...

Table 6: Analysis of Claimant Count at Cotswold District ward level - March 2023

District	Ward	Rate	Rank*
Cotswolds	Chedworth & Churn Valley	0.9	4
Cotswolds	Stratton	1.0	6
Cotswolds	Coln Valley	1.1	11
Cotswolds	Siddington & Cerney Rural	1.1	11
Cotswolds	Ermin	1.2	17
Cotswolds	Kemble	1.2	17
Cotswolds	Grumbolds Ash with Avening	1.3	28
Cotswolds	The Rissingtons	1.3	28
Cotswolds	Northleach	1.5	40
Cotswolds	Sandywell	1.5	40
Cotswolds	Tetbury East & Rural	1.5	40
Cotswolds	Abbey	1.6	48
Cotswolds	Fosseridge	1.6	48
Cotswolds	Moreton West	1.6	48
Cotswolds	The Ampneys & Hampton	1.6	48
Cotswolds	Bourton Vale	1.7	57
Cotswolds	Fairford North	1.7	57
Cotswolds	Lechlade, Kempsford & Fairford South	1.7	57
Cotswolds	Four Acres	1.8	65
Cotswolds	Blockley	1.9	68
Cotswolds	Bourton Village	1.9	68
Cotswolds	South Cerney Village	1.9	68
Cotswolds	Campden & Vale	2.0	78
Cotswolds	Moreton East	2.1	84
Cotswolds	Chesterton	2.2	93
Cotswolds	Stow	2.2	93
Cotswolds	Tetbury with Upton	2.2	93
Cotswolds	St Michael's	2.3	97
Cotswolds	New Mills	2.6	108
Cotswolds	The Beeches	2.6	108
Cotswolds	Tetbury Town	3.0	116
Cotswolds	Watermoor	3.4	120

	lowest 10% of county
	first quartile of county
	second quartile of county
	third quartile of county
	fourth quartile of county
	highest 10% of county

* 1 = "best" and 138 = "worst"

Table 6 shows overall claimant rates for Cotswold District wards and their position relative to all wards in Gloucestershire.

PART 4: LOCAL AUTHORITY DISTRICT AND WARD ANALYSIS

4.3 Forest of Dean District

Claimant Rate and Claimant Count

Figure 7: Forest of Dean District claimant rate over the last year

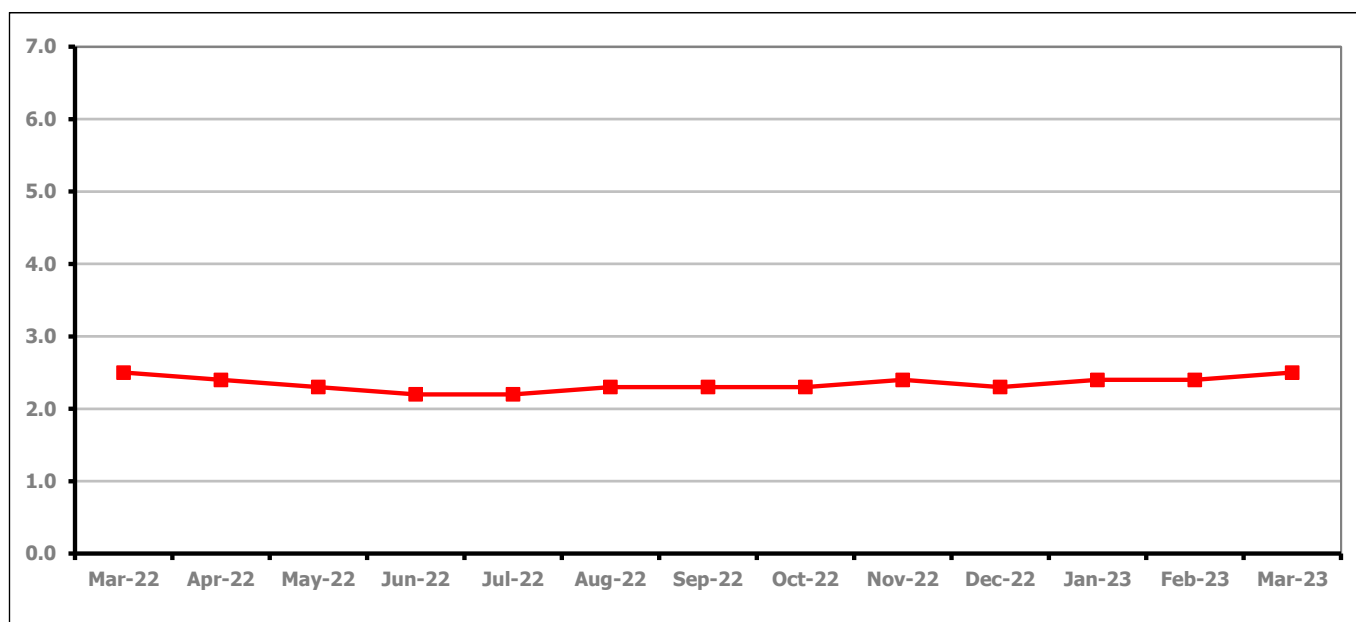


Figure 7 shows the claimant rate in the Forest of Dean increased to 2.5% in March 2023.

Figure 8: Claimant rates across Forest of Dean District wards - March 2023

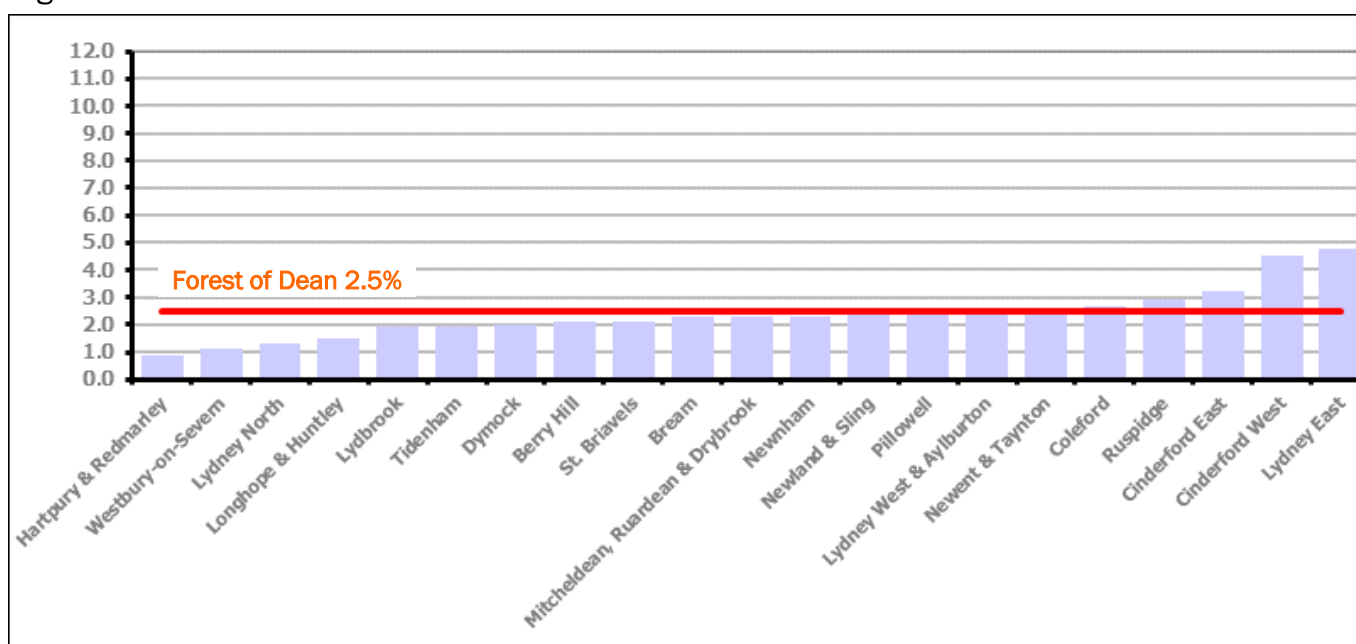


Figure 8 shows the claimant rates for the Forest of Dean District wards. The red line represents the average claimant rate across the District of 2.5%. Five wards lie above the average.

PART 4: LOCAL AUTHORITY DISTRICT AND WARD ANALYSIS**4.3 Forest of Dean District continued...***Table 7: Analysis of Claimant Count at Forest of Dean District ward level - March 2023*

District	Ward	Rate	Rank*
Forest	Hartpury & Redmarley	0.9	4
Forest	Westbury-on-Severn	1.1	11
Forest	Lydney North	1.3	28
Forest	Longhope & Huntley	1.5	40
Forest	Lydbrook	1.9	68
Forest	Tidenham	1.9	68
Forest	Dymock	2.0	78
Forest	Berry Hill	2.1	84
Forest	St. Briavels	2.1	84
Forest	Bream	2.3	97
Forest	Mitcheldean, Ruardean & Drybrook	2.3	97
Forest	Newnham	2.3	97
Forest	Newland & Sling	2.4	103
Forest	Pillowell	2.4	103
Forest	Lydney West & Aylburton	2.5	106
Forest	Newent & Taynton	2.5	106
Forest	Coleford	2.7	113
Forest	Ruspidge	2.9	115
Forest	Cinderford East	3.2	119
Forest	Cinderford West	4.5	130
Forest	Lydney East	4.8	132

	lowest 10% of county
	first quartile of county
	second quartile of county
	third quartile of county
	fourth quartile of county
	highest 10% of county

* 1 = "best" and 138 = "worst"

Table 7 shows overall claimant rates for the Forest of Dean District wards and their position relative to all wards in Gloucestershire.

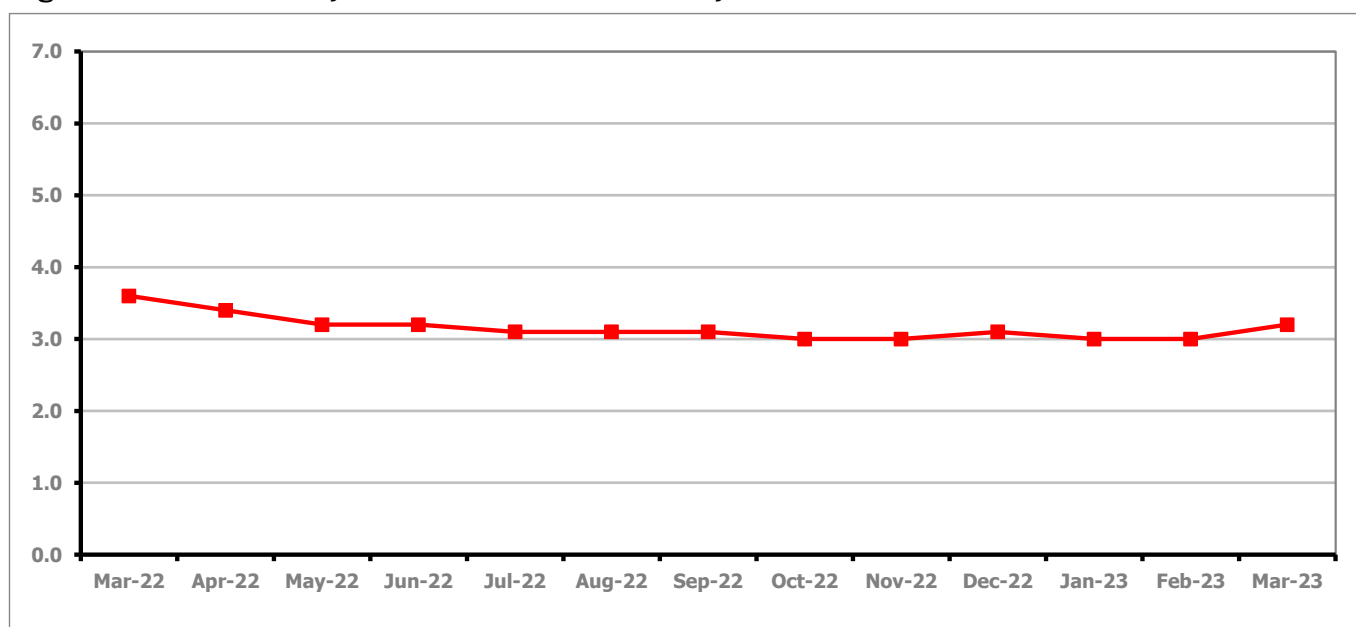
PART 4: LOCAL AUTHORITY DISTRICT AND WARD ANALYSIS**4.4 Gloucester City****Claimant Rate and Claimant Count***Figure 9: Gloucester City claimant rate over the last year*

Figure 9 shows the claimant rate for Gloucester City increased to 3.2% in March 2023.

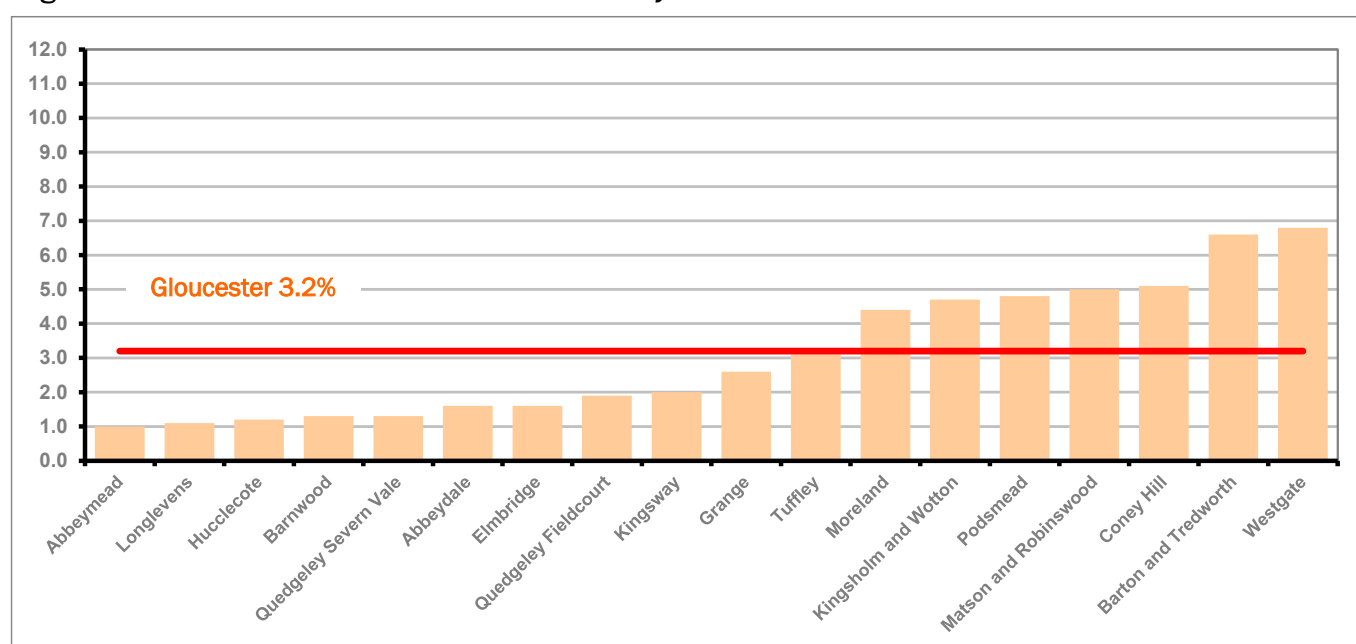
Figure 10: Claimant rates across Gloucester City wards - March 2023

Figure 10 shows the claimant rates for Gloucester City district wards. The red line represents the average claimant rate across the City of 3.2%. Seven wards lie above the average.

PART 4: LOCAL AUTHORITY DISTRICT AND WARD ANALYSIS**4.4 Gloucester City continued...***Table 8: Analysis of Claimant Count at Gloucester City ward level - March 2023*

District	Ward	Rate	Rank*
Gloucester	Abbeymead	1.0	6
Gloucester	Longlevens	1.1	11
Gloucester	Hucclecote	1.2	17
Gloucester	Barnwood	1.3	28
Gloucester	Quedgeley Severn Vale	1.3	28
Gloucester	Abbeydale	1.6	48
Gloucester	Elmbridge	1.6	48
Gloucester	Quedgeley Fieldcourt	1.9	68
Gloucester	Kingsway	2.0	78
Gloucester	Grange	2.6	108
Gloucester	Tuffley	3.1	117
Gloucester	Moreland	4.4	128
Gloucester	Kingsholm and Wotton	4.7	131
Gloucester	Podsmead	4.8	132
Gloucester	Matson and Robinswood	5.0	135
Gloucester	Coney Hill	5.1	136
Gloucester	Barton and Tredworth	6.6	137
Gloucester	Westgate	6.8	138

	lowest 10% of county
	first quartile of county
	second quartile of county
	third quartile of county
	fourth quartile of county
	highest 10% of county

* 1 = "best" and 138 = "worst"

Table 8 shows overall claimant rates for Gloucester City wards and their position relative to all wards in Gloucestershire.

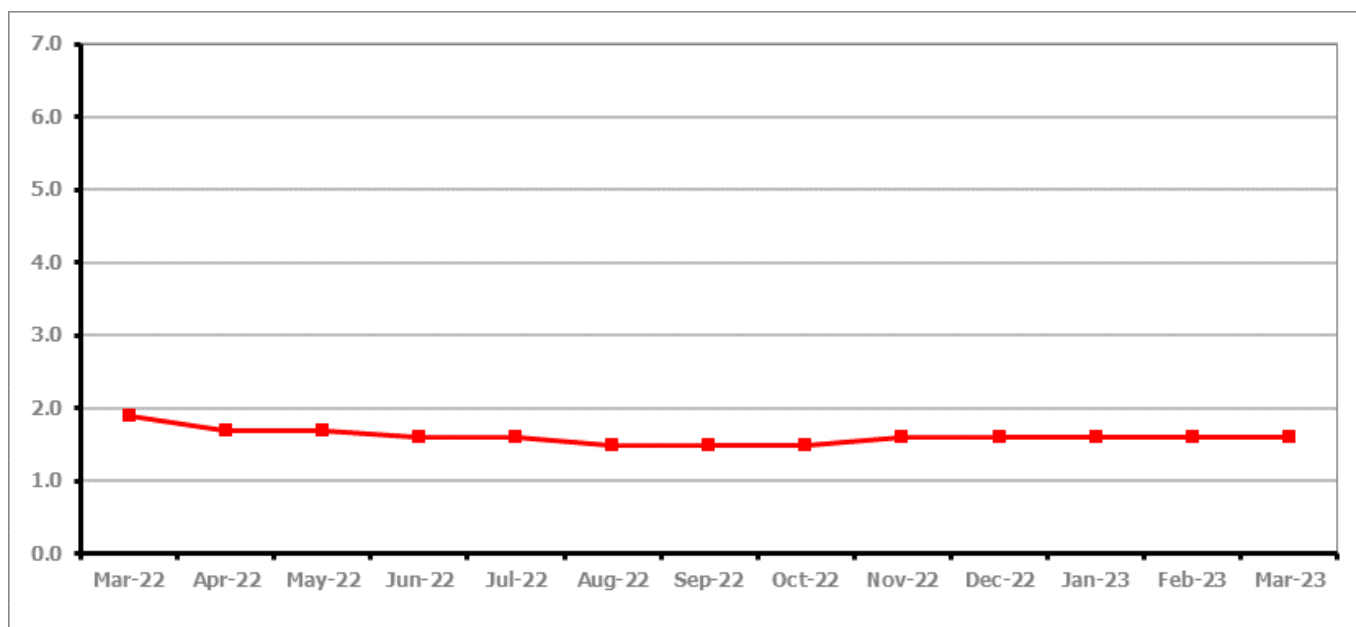
PART 4: LOCAL AUTHORITY DISTRICT AND WARD ANALYSIS**4.5 Stroud District****Claimant Rate and Claimant Count***Figure 11: Stroud District claimant rate over the last year*

Figure 11 shows the claimant rate for Stroud remained at 1.6% in March 2023.

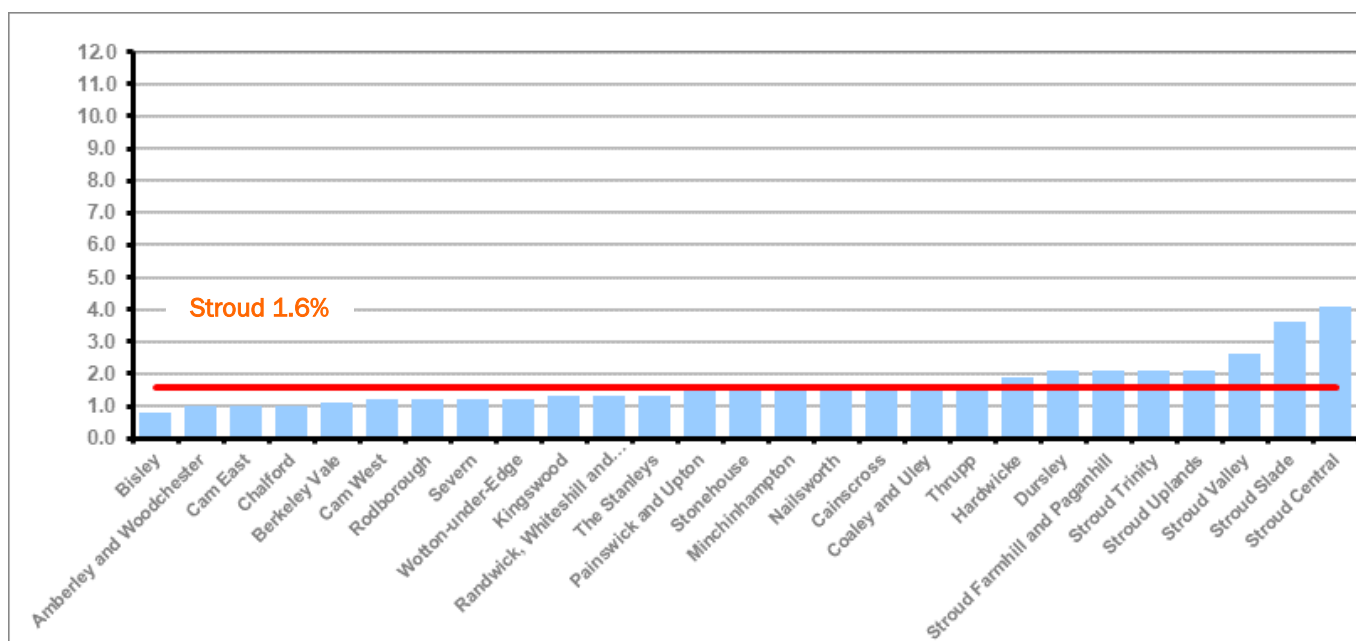
Figure 12: Claimant rates across Stroud District wards - March 2023

Figure 12 shows the claimant rates in Stroud District wards. The red line represents the average claimant rate across the District of 1.6%. Eleven wards are above the average.

PART 4: LOCAL AUTHORITY AND DISTRICT ANALYSIS

4.5 Stroud District continued...

Table 9: Analysis of Claimant Count at Stroud District ward level - March 2023

District	Ward	Rate	Rank*
Stroud	Bisley	0.8	1
Stroud	Amberley and Woodchester	1.0	6
Stroud	Cam East	1.0	6
Stroud	Chalford	1.0	6
Stroud	Berkeley Vale	1.1	11
Stroud	Cam West	1.2	17
Stroud	Rodborough	1.2	17
Stroud	Severn	1.2	17
Stroud	Wotton-under-Edge	1.2	17
Stroud	Kingswood	1.3	28
Stroud	Randwick, Whiteshill and Ruscombe	1.3	28
Stroud	The Stanleys	1.3	28
Stroud	Painswick and Upton	1.5	40
Stroud	Stonehouse	1.5	40
Stroud	Minchinhampton	1.6	48
Stroud	Nailsworth	1.6	48
Stroud	Cainscross	1.7	57
Stroud	Coaley and Uley	1.7	57
Stroud	Thrupp	1.7	57
Stroud	Hardwicke	1.9	68
Stroud	Dursley	2.1	84
Stroud	Stroud Farmhill and Paganhill	2.1	84
Stroud	Stroud Trinity	2.1	84
Stroud	Stroud Uplands	2.1	84
Stroud	Stroud Valley	2.6	108
Stroud	Stroud Slade	3.6	122
Stroud	Stroud Central	4.1	125

	lowest 10% of county
	first quartile of county
	second quartile of county
	third quartile of county
	fourth quartile of county
	highest 10% of county

* 1 = "best" and 138 = "worst"

Table 9 shows overall claimant rates for Stroud District wards and their position relative to all wards in Gloucestershire.

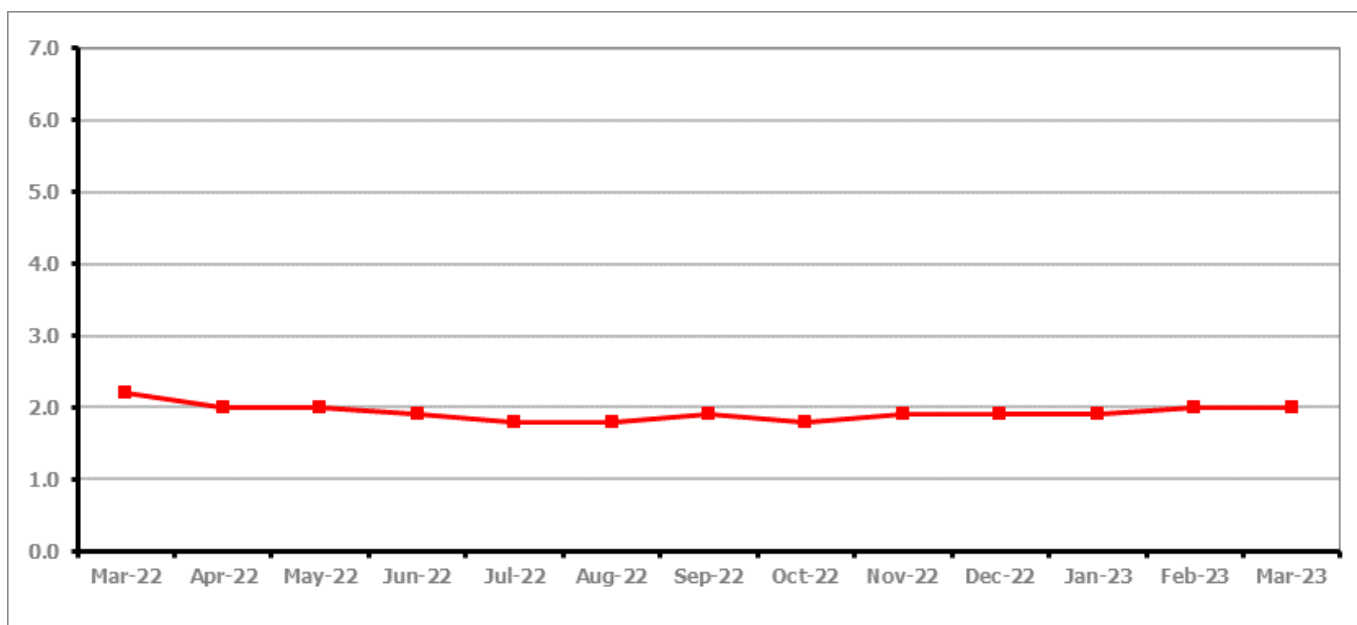
PART 4: LOCAL AUTHORITY DISTRICT AND WARD ANALYSIS**4.6 Tewkesbury Borough****Claimant Rate and Claimant Count***Figure 13: Tewkesbury Borough claimant rate over the last year*

Figure 13 shows the claimant rate for Tewkesbury Borough remained at 2.0% in March 2023.

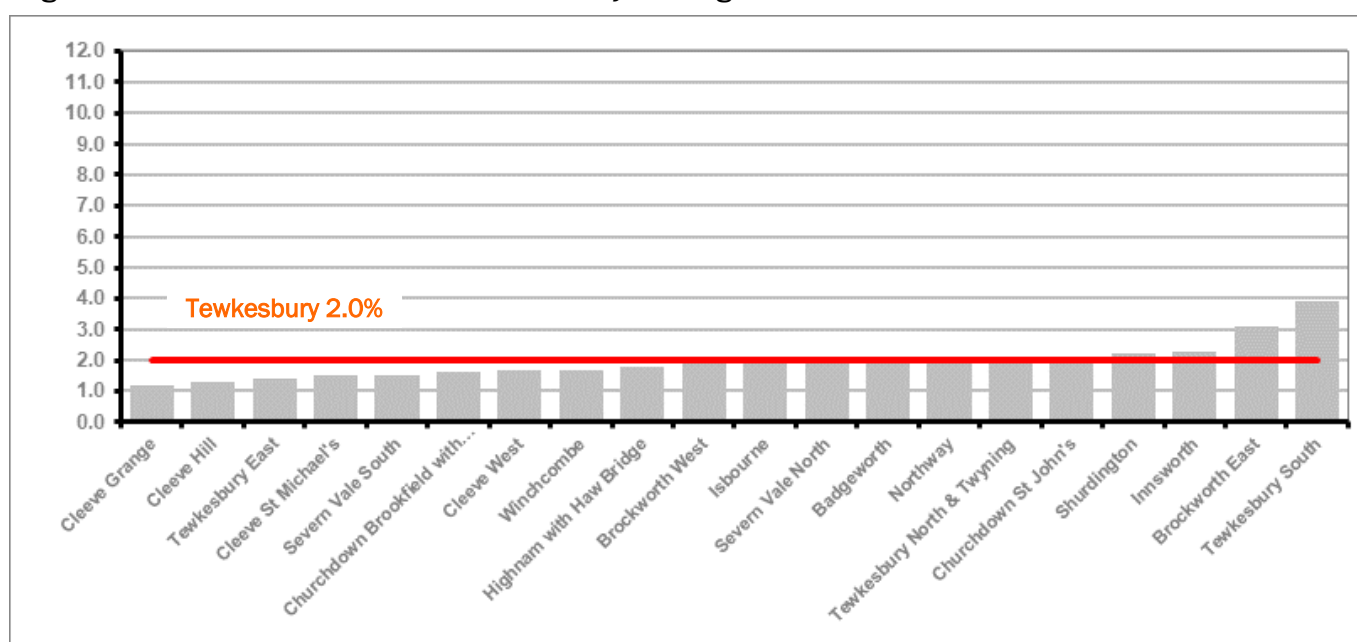
Figure 14: Claimant rates across Tewkesbury Borough wards - March 2023

Figure 14 shows the claimant rates in Tewkesbury Borough wards. The red line represents the average claimant rate across the District of 2.0%. Five wards are above the average.

PART 4: LOCAL AUTHORITY AND DISTRICT ANALYSIS

4.6 Tewkesbury Borough continued...

Table 10: Analysis of Claimant Count at Tewkesbury Borough level - March 2023

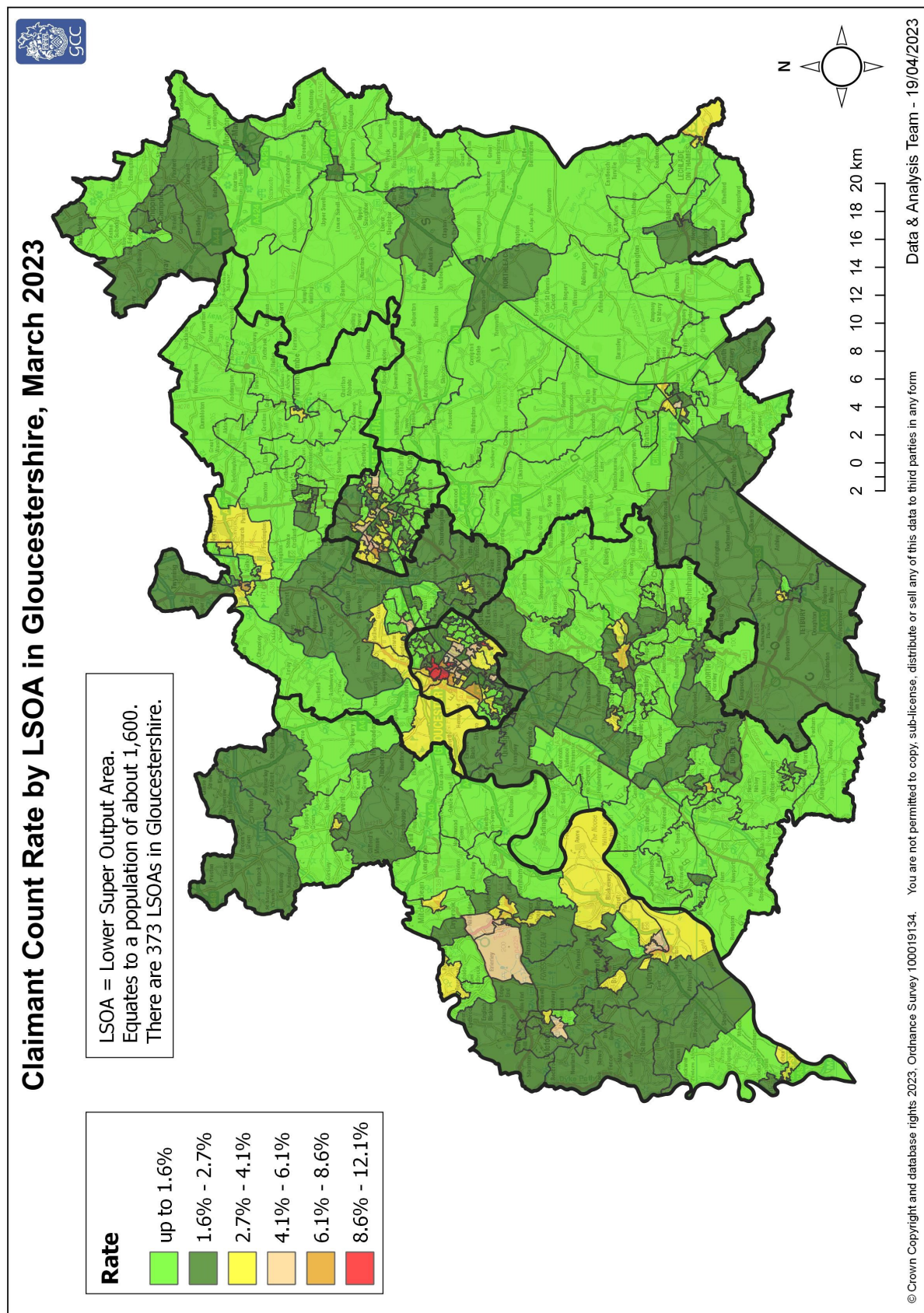
District	Ward	Rate	Rank*
Tewkesbury	Cleeve Grange	1.2	17
Tewkesbury	Cleeve Hill	1.3	28
Tewkesbury	Tewkesbury East	1.4	39
Tewkesbury	Cleeve St Michael's	1.5	40
Tewkesbury	Severn Vale South	1.5	40
Tewkesbury	Churchdown Brookfield with Hucclecote	1.6	48
Tewkesbury	Cleeve West	1.7	57
Tewkesbury	Winchcombe	1.7	57
Tewkesbury	Highnam with Haw Bridge	1.8	65
Tewkesbury	Brockworth West	1.9	68
Tewkesbury	Isbourne	1.9	68
Tewkesbury	Severn Vale North	1.9	68
Tewkesbury	Badgeworth	2.0	78
Tewkesbury	Northway	2.0	78
Tewkesbury	Tewkesbury North & Twynning	2.0	78
Tewkesbury	Churchdown St John's	2.1	84
Tewkesbury	Shurdington	2.2	93
Tewkesbury	Innsworth	2.3	97
Tewkesbury	Brockworth East	3.1	117
Tewkesbury	Tewkesbury South	3.9	124

	lowest 10% of county
	first quartile of county
	second quartile of county
	third quartile of county
	fourth quartile of county
	highest 10% of county

* 1 = "best" and 138 = "worst"

Table 10 shows overall claimant rates for Tewkesbury Borough wards and their position relative to all wards in Gloucestershire.

PART 5: MAP SHOWING DISTRIBUTION OF CLAIMANT RATE ACROSS GLOUCESTERSHIRE

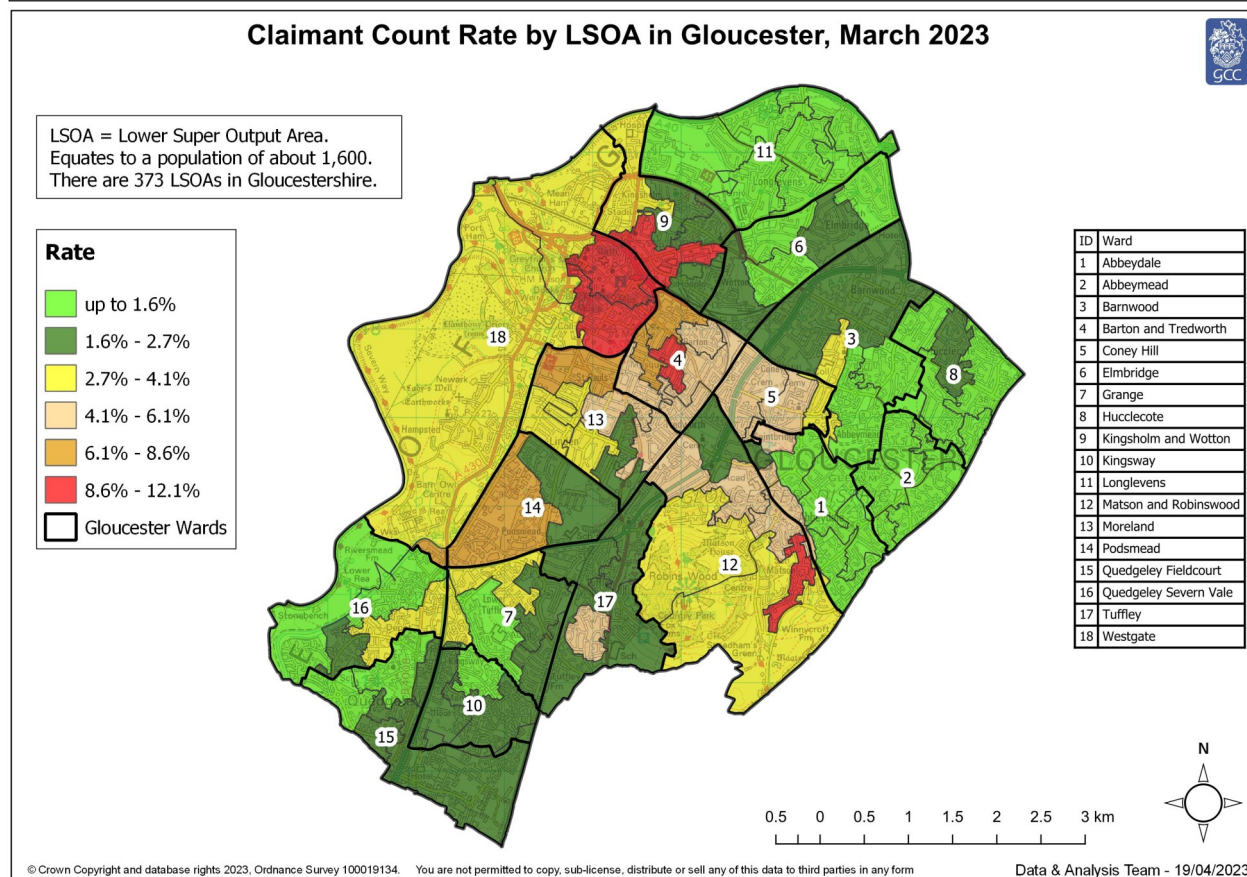
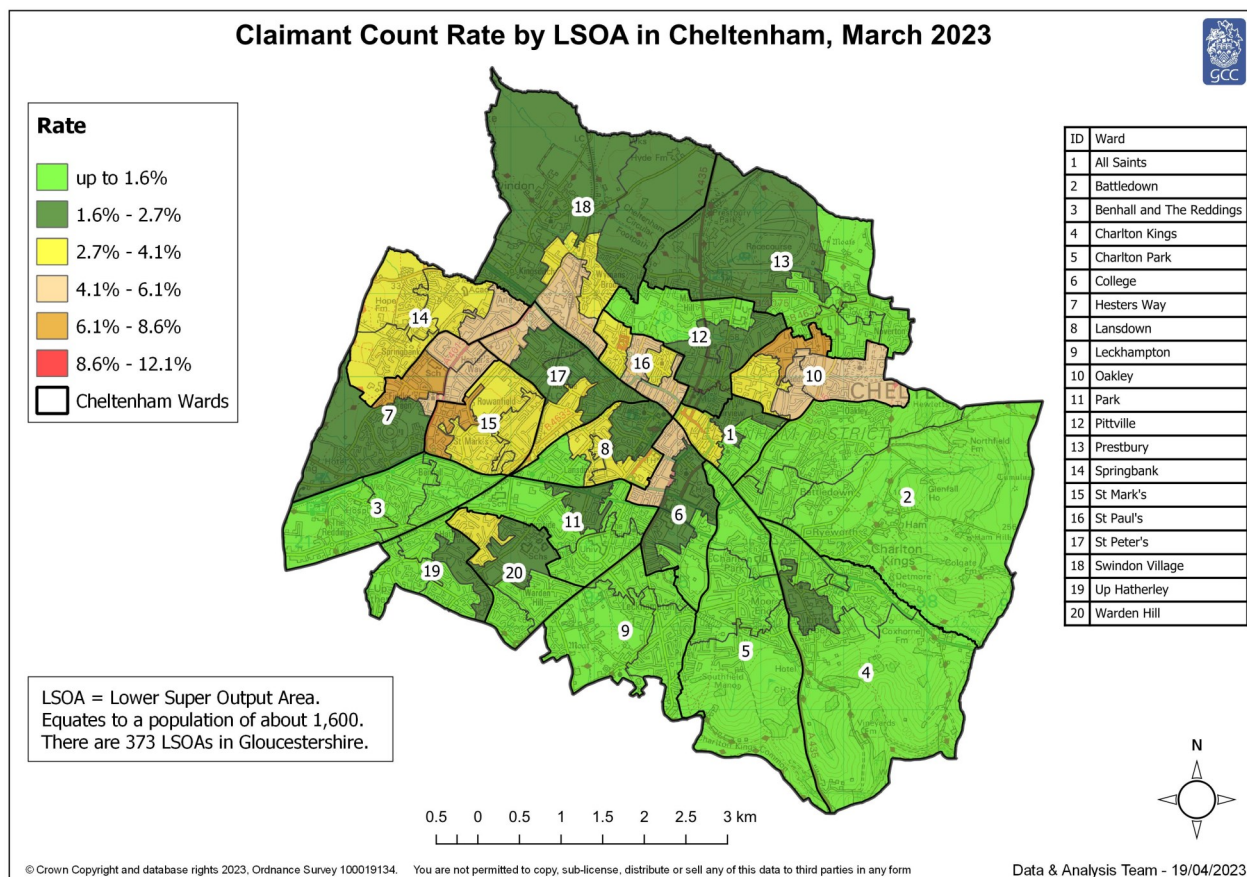


These maps currently show the 2011 LSOA boundaries.

Note: We have made changes to the way in which the rates illustrated on the maps are calculated - this means they are not comparable with those shown in previous bulletins.

Rates calculated using Lower Layer Super Output Area Population Estimates Mid-2019, Office for National Statistics

PART 5: MAP SHOWING DISTRIBUTION OF CLAIMANT RATE ACROSS GLOUCESTERSHIRE



These maps currently show the 2011 LSOA boundaries.

Note: We have made changes to the way in which the rates illustrated on the maps are calculated - this means they are not comparable with those shown in previous bulletins.

Rates calculated using Lower Layer Super Output Area Population Estimates Mid-2019, Office for National Statistics

PART 6: YOUTH UNEMPLOYMENT(18-24 year olds)

Youth Claimant Rate and Claimant Count

Figure 15: Claimant Count for Gloucestershire over the past year

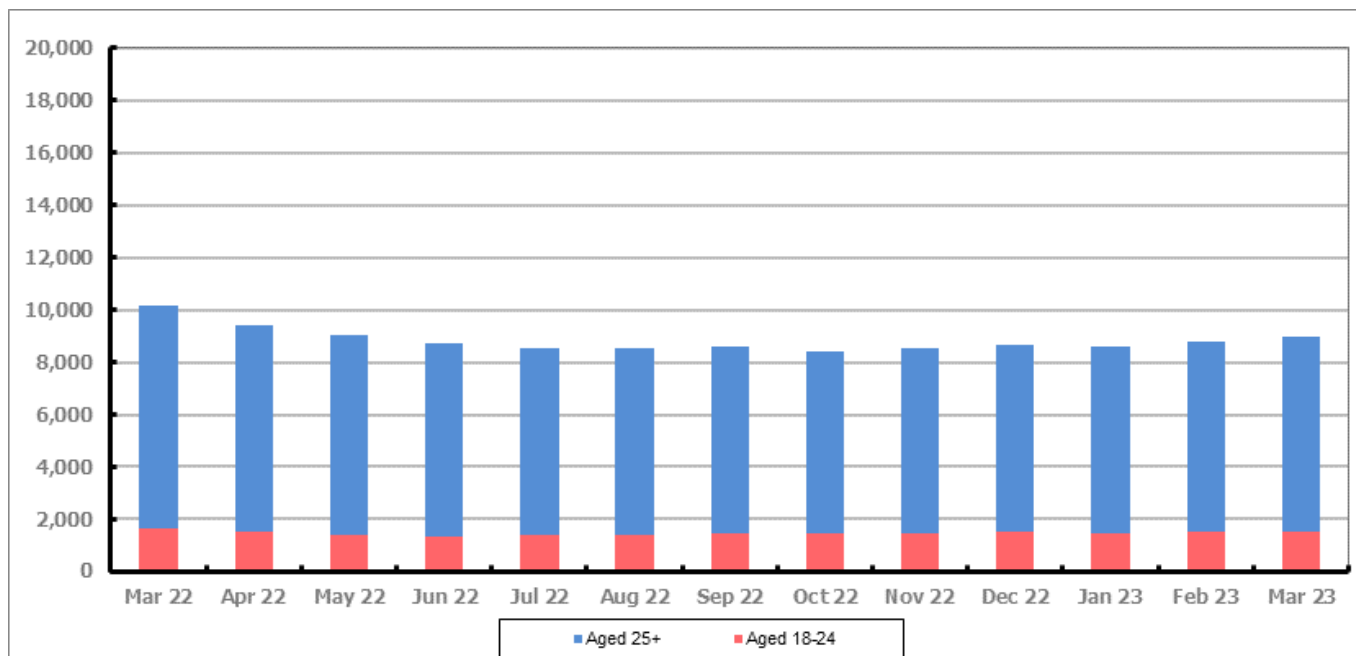


Figure 15 shows that in March 2023, 1,545 people aged 18-24 were claiming Job Seekers Allowance and Universal Credit who were not in work in Gloucestershire, this represents 17.1% of total working age claimants.

PART 7: YOUNG PEOPLE NOT IN EDUCATION, EMPLOYMENT OR TRAINING (NEET) IN GLOUCESTERSHIRE

Data provided by Gloucestershire Youth Support Team on the situation of young people (16-18) in Gloucestershire who are not in education, employment or formal training.

Gloucestershire Youth Support Team is required to report performance on the Academic Year 12 and 13 (16/17 age) against nationally defined criteria for counting the NEET group to the Department for Education (DfE) on a monthly basis. The NEET group includes young people actively seeking education, employment or training as well as those young people who are either not yet ready or who are unable to access these opportunities because of their personal circumstances. The figures quoted below include young people in both of these categories.

March 2023

Academic Year 12-13 Summary

	NEET	Cohort	%
Cheltenham	54	2142	2.52%
Cotswold	28	1697	1.65%
Forest	46	1720	2.67%
Gloucester	134	3181	4.21%
Stroud	39	2648	1.47%
Tewkesbury	38	1996	1.90%
Total	339	13384	2.53%

16-18 Age Summary

	NEET	Cohort	%
Cheltenham	59	2610	2.26%
Cotswold	31	2034	1.52%
Forest	56	2087	2.68%
Gloucester	150	3799	3.95%
Stroud	45	3199	1.41%
Tewkesbury	43	2409	1.78%
Total	384	16138	2.38%

16-18 Adjust NEET*	4.30%
--------------------	-------

Monthly Change	11	41	0.07%
Previous month	328	13343	2.46%

Monthly Change	-20	-529	-0.04%
Previous month	404	16667	2.42%

The academic year 12-13 group contains a proportion of young people who turn 18 in the academic year but were 17 on the 31st August the previous academic year so are entitled to learning through RPA (raising participation age).

Please note all figures quoted above are subject to change before the submission date to the DfE which usually happens in the second or third week of the month for the previous month.

If you would like to receive any further information on Gloucestershire's NEET strategy, then please contact Lynne.Speak@Prospects.co.uk or telephone 07900 391182.

(*) Adjustment includes a proportion of young people aged 16-18 whose outcomes are not-known to Gloucestershire Youth Support Team.