

Unemployment Bulletin

Issue 92 March 2016

Contents

| | |
|---|-----------|
| Part 1: Summary | 1 |
| A summary of unemployment data at district, County, regional and national level | |
| Part 2: County | 3 |
| Unemployment figures for the County compared to the South West and the rest of the UK | |
| Part 3: Districts | 4 |
| A comparative break down of unemployment figures by district | |
| Part 4: Wards | |
| Further breakdown of unemployment figures by ward: | |
| Cheltenham | 6 |
| Cotswolds | 8 |
| Forest of Dean | 10 |
| Gloucester | 12 |
| Stroud | 14 |
| Tewkesbury | 16 |
| Part 5: Map | 18 |
| Distribution of claimant rate across Gloucestershire | |
| Part 6: Youth Unemployment | 20 |
| Unemployment data for the 18-24 year old age group | |
| Part 7: Young People | 22 |
| Data about Young People Not in Education, Employment or Training (NEET) | |

The Claimant Count is a measure of the number of people who are unemployed and claiming benefits. From 1996 until the recent introduction of Universal Credit, this was based on the number of people claiming Jobseeker's Allowance. However, since its introduction some unemployment benefit claimants will be claiming Universal Credit instead.

To reflect this change, the Claimant Count has been expanded to include people claiming Jobseeker's Allowance plus those who claim Universal Credit and who are out of work. For more information about Universal Credit please see the [ONS website](http://www.ons.gov.uk).

INTRODUCTION

The Unemployment Bulletin provides a monthly update on unemployment data for Gloucestershire, the South West region and the United Kingdom. It is produced by the Strategic Needs Analysis Team in the County Council's Strategy and Challenge function. The data is sourced from the Office for National Statistics via Nomis (www.nomis.co.uk).

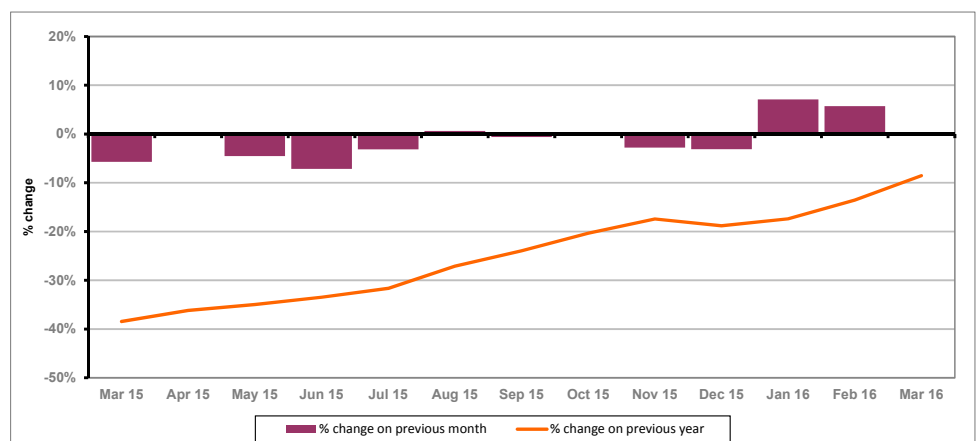
PART 1: SUMMARY

The claimant rate in Gloucestershire was 1.1% in March 2016. This remained the same as the February 2016 figure. The UK and the South West rate also remained the same as the previous month at 1.9% and 1.2% respectively. Gloucestershire's rate was 0.1% lower than the South West average of 1.2%, and 0.8% lower than the UK average of 1.9%.

The claimant count in Gloucestershire in March 2016 decreased by 10 people. The amount of people claiming in March 2016 was 0.2% lower than the number in February 2016. This compares to a 1.3% decrease in the South West and a 0.5% decrease for the UK.

The year on year claimant count in Gloucestershire has increased since last month. The count was 8.5% lower in March 2016 than at the same point in the previous year as shown in the graph below.

Gloucestershire claimants - Month on Month and Year on Year change:
March 2015 to March 2016



Source: ONS Crown Copyright Reserved

Produced by:

Strategic Needs Analysis Team
Strategy and Challenge
Gloucestershire County Council
April 2016

DISTRICTS AT A GLANCE

At a glance unemployment information grouped by district. Includes:

Claim count: Total number of people claiming Job Seekers Allowance and Universal Credit who are not in work in March 2016

Compared to last month: How much larger/smaller March's claimant count is compared to February, expressed as a %

Claimant rate: The % of working age population claiming Job Seekers Allowance and Universal Credit who are not in work in March 2016

Highest claiming ward: The ward with the highest claim count in that district and the rate

CHELTEMHAM BOROUGH

| | |
|-------------------------|--------------------|
| Claim count: | 805 |
| Compared to last month: | -1.2% |
| Claimant rate: | 1.1% |
| Highest claiming ward | Hesters Way (2.1%) |

GLOUCESTER CITY

| | |
|-------------------------|-----------------|
| Claim count: | 1,410 |
| Compared to last month: | 2.5% |
| Claimant rate: | 1.8% |
| Highest claiming wards | Westgate (3.9%) |

COTSWOLD DISTRICT

| | |
|-------------------------|---------------------------------|
| Claim count: | 320 |
| Compared to last month: | -3.0% |
| Claimant rate: | 0.6% |
| Highest claiming ward | Cirencester Watermoor (1.7%) |

STROUD DISTRICT

| | |
|-------------------------|--------------|
| Claim count: | 530 |
| Compared to last month: | -4.5% |
| Claimant rate: | 0.8% |
| Highest claiming wards | Slade (1.9%) |

FOREST OF DEAN

| | |
|-------------------------|--------------------|
| Claim count: | 660 |
| Compared to last month: | 0.8% |
| Claimant rate: | 1.3% |
| Highest claiming ward | Lydney East (2.5%) |

TEWKESBURY BOROUGH

| | |
|-------------------------|-----------------------------------|
| Claim count: | 505 |
| Compared to last month: | -1.0% |
| Claimant rate: | 1.0% |
| Highest claiming ward | Tewkesbury Prior's Park (2.8%) |

PART 2: UK, SW AND GLOUCESTERSHIRE INDICATORS

The unemployment situation in Gloucestershire compared to the South West and the UK.

Claimant Rate

Figure 1: Claimant Rate for Gloucestershire, the South West and UK over the past year

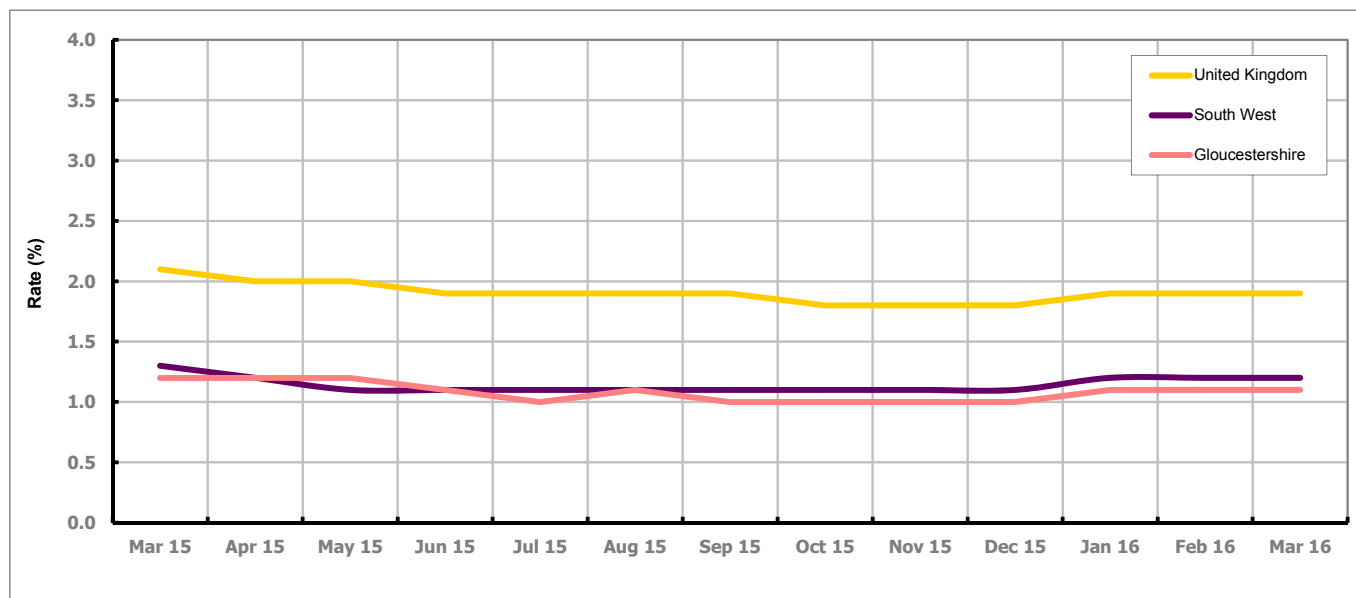


Figure 1 shows the claimant rate for Gloucestershire at 1.1% in March 2016. The Gloucestershire rate has been lower than the South West average since August 2015. It has been persistently lower by approximately 0.8% against the UK average.

Claimant Count

Table 1: Analysis of UK, South West and Gloucestershire Claimant Counts

| Area | Claimant Count in March 2016 | % change on February 2016 | Average % change over the last six months | Consecutive months decreasing |
|-----------------|------------------------------|---------------------------|---|-------------------------------|
| UK | 784,480 | -0.5% | 0.8% | 0 |
| South West | 40,630 | -1.3% | 1.8% | 0 |
| Gloucestershire | 4,230 | -0.2% | 1.0% | 0 |

Table 1 shows that in March 2016, the number of claimants in Gloucestershire was 0.2% lower than the number in February 2016.

The average change in claimants in Gloucestershire for the six months to March 2016 was 1.0%.

PART 3: LOCAL AUTHORITY DISTRICT ANALYSIS

Claimant Rate and Claimant Count

Figure 2: Claimant Rate (%) across Gloucestershire - March 2016

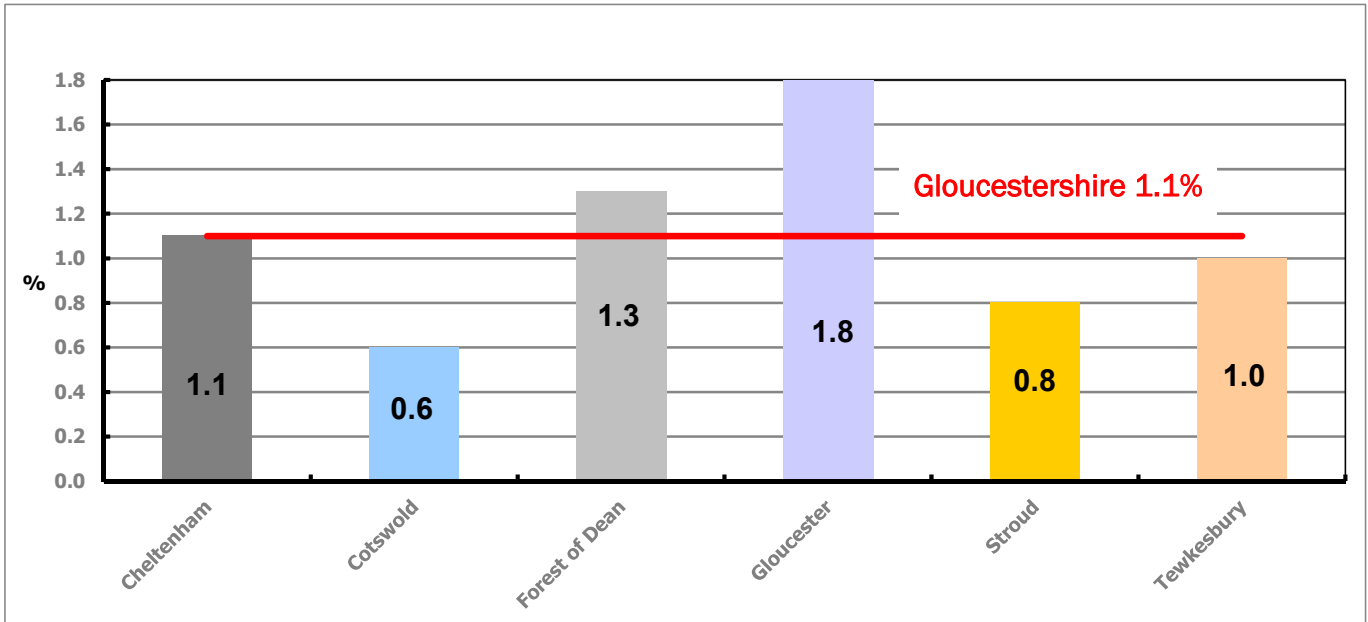


Figure 2 shows the claimant rate for March 2016 in Gloucestershire. Between February and March 2016, the rate remained the same in all districts except Cotswold where there was a decrease, and Gloucester where there was an increase.

Figure 3: Total claimants over the past year across Gloucestershire Districts

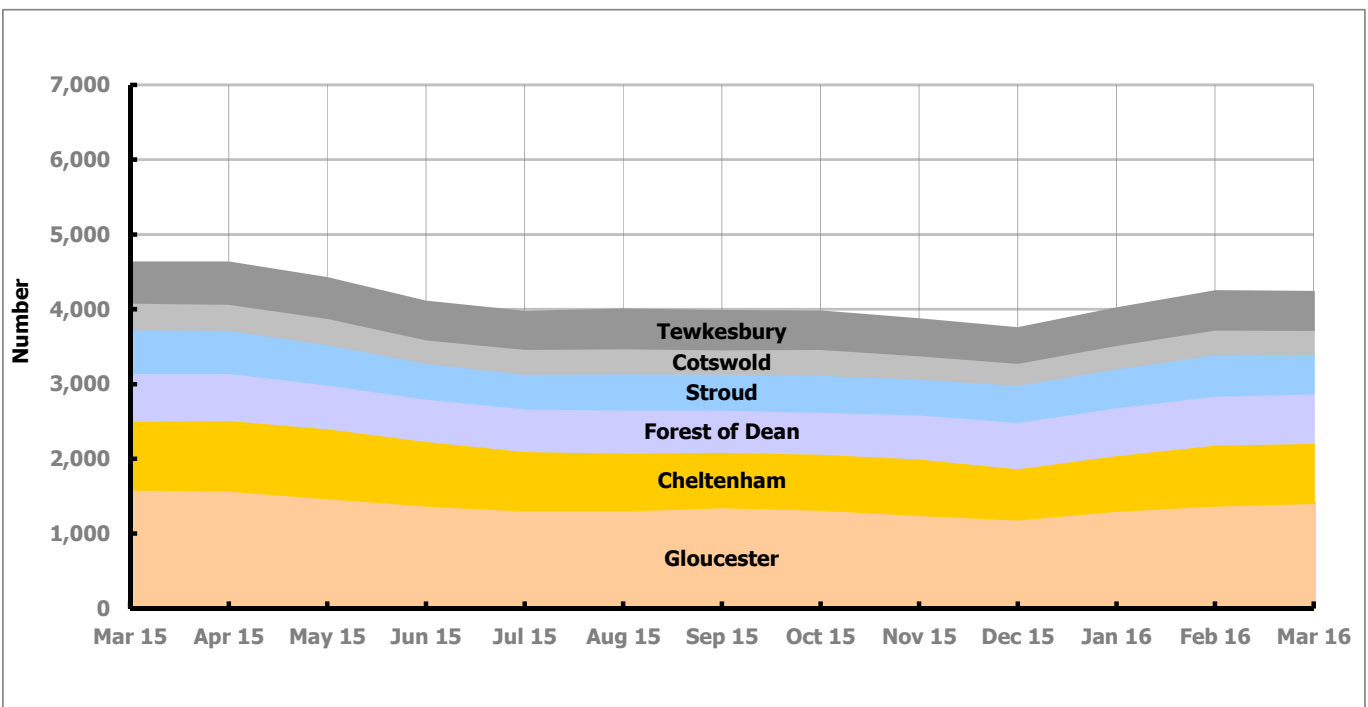


Figure 3 shows the overall claimant count by district over the past year. The number of claimants has decreased over the last year, with the exception of August, October, January and February 2016 when there was an increase, and April when the number of claimants stayed the same.

Table 2: Analysis of Gloucestershire and District Claimant Counts

| Total | Mar 16 Number | Mar 16 Rate | Feb 16 Number | Feb 16 Rate | Monthly change | % monthly change | Monthly change of rate |
|------------------------|------------------|----------------|------------------|----------------|-------------------|---------------------|---------------------------|
| Gloucestershire | 4,230 | 1.1 | 4,240 | 1.1 | -10 | -0.2% | 0.0 |
| Cheltenham | 805 | 1.1 | 815 | 1.1 | -10 | -1.2% | 0.0 |
| Cotswold | 320 | 0.6 | 330 | 0.7 | -10 | -3.0% | -0.1 |
| Forest of Dean | 660 | 1.3 | 655 | 1.3 | 5 | 0.8% | 0.0 |
| Gloucester | 1,410 | 1.8 | 1,375 | 1.7 | 35 | 2.5% | 0.1 |
| Stroud | 530 | 0.8 | 555 | 0.8 | -25 | -4.5% | 0.0 |
| Tewkesbury | 505 | 1.0 | 510 | 1.0 | -5 | -1.0% | 0.0 |

Table 2 shows the change in the claimant count in March 2016 compared to February 2016. All districts saw a decrease in the number of claimants, except Forest of Dean and Gloucester which saw an increase.

Table 3: Analysis of Male Gloucestershire and District Claimant Counts

| Male | Mar 16 Number | Mar 16 Rate | Feb 16 Number | Feb 16 Rate | Monthly change | % monthly change | Monthly change of rate |
|------------------------|------------------|----------------|------------------|----------------|-------------------|---------------------|---------------------------|
| Gloucestershire | 2,745 | 1.5 | 2,780 | 1.5 | -35 | -1.3% | 0.0 |
| Cheltenham | 525 | 1.4 | 545 | 1.4 | -20 | -3.7% | 0.0 |
| Cotswold | 205 | 0.8 | 210 | 0.9 | -5 | -2.4% | -0.1 |
| Forest of Dean | 430 | 1.7 | 425 | 1.7 | 5 | 1.2% | 0.0 |
| Gloucester | 920 | 2.3 | 905 | 2.2 | 15 | 1.7% | 0.1 |
| Stroud | 350 | 1.0 | 365 | 1.0 | -15 | -4.1% | 0.0 |
| Tewkesbury | 320 | 1.2 | 330 | 1.3 | -10 | -3.0% | -0.1 |

Table 3 shows the change in the male claimant count in March 2016 compared to February 2016. All districts saw a decrease in the number of male claimants, except Forest of Dean and Gloucester which saw an increase.

Table 4: Analysis of Female Gloucestershire and District Claimant Counts

| Female | Mar 16 Number | Mar 16 Rate | Feb 16 Number | Feb 16 Rate | Monthly change | % monthly change | Monthly change of rate |
|------------------------|------------------|----------------|------------------|----------------|-------------------|---------------------|---------------------------|
| Gloucestershire | 1,485 | 0.8 | 1,460 | 0.8 | 25 | 1.7% | 0.0 |
| Cheltenham | 275 | 0.7 | 270 | 0.7 | 5 | 1.9% | 0.0 |
| Cotswold | 115 | 0.5 | 120 | 0.5 | -5 | -4.2% | 0.0 |
| Forest of Dean | 230 | 0.9 | 225 | 0.9 | 5 | 2.2% | 0.0 |
| Gloucester | 495 | 1.2 | 470 | 1.2 | 25 | 5.3% | 0.0 |
| Stroud | 180 | 0.5 | 190 | 0.5 | -10 | -5.3% | 0.0 |
| Tewkesbury | 190 | 0.7 | 180 | 0.7 | 10 | 5.6% | 0.0 |

Table 4 shows the change in the female claimant count in March 2016 compared to February 2016. All districts saw an increase in the number of female claimants, except Cotswold and Stroud which saw a decrease.

PART 4: LOCAL AUTHORITY DISTRICT AND WARD ANALYSIS

This section covers the six districts and a comparison of their constituent wards.

4.1 Cheltenham Borough

Claimant Rate and Claimant Count

Figure 4: Cheltenham Borough claimant rate over the last year

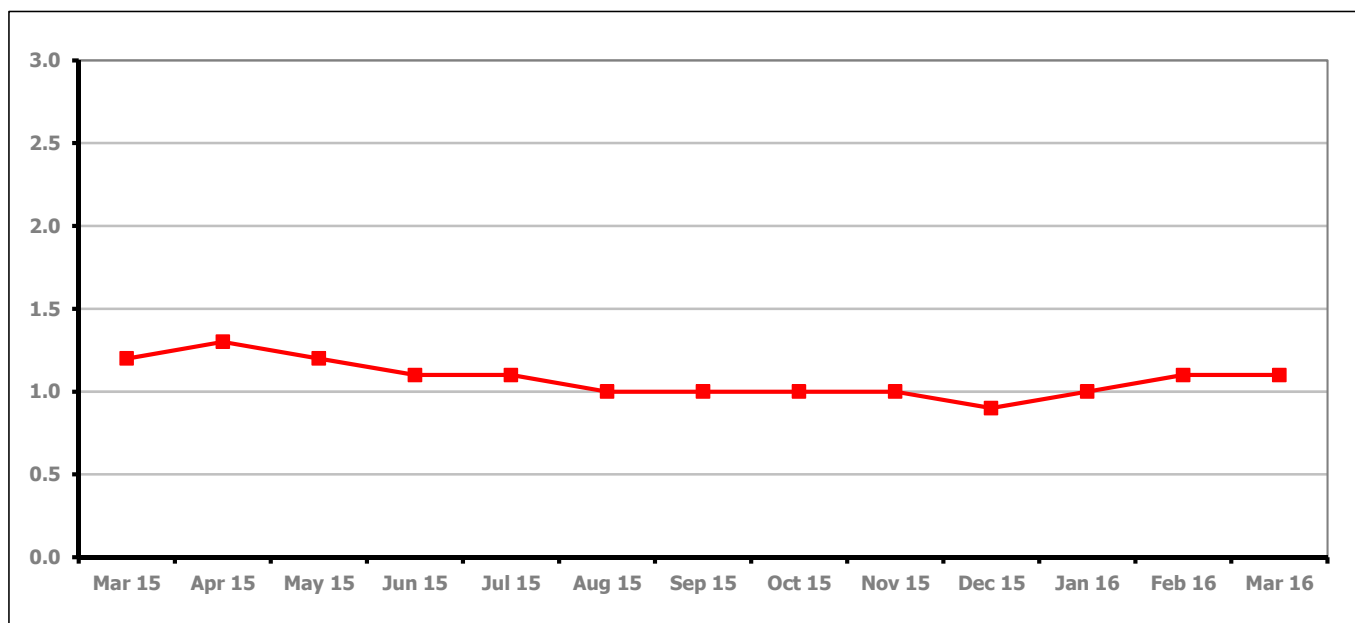


Figure 4 shows the claimant rate in Cheltenham stayed the same as last month at 1.1%.

Figure 5: Cheltenham Borough claimants - Month on Month and Year on Year change

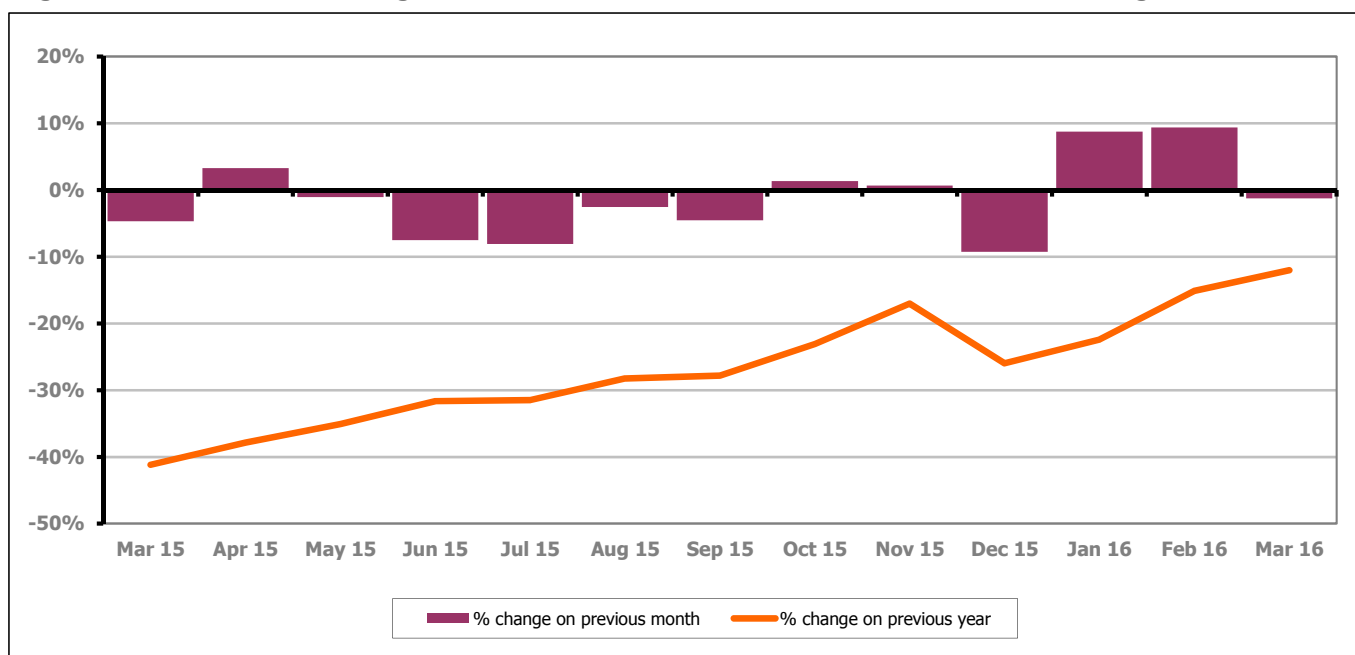


Figure 5 shows the claimant count decreased by 1.2% since last month. The change on the previous year has increased between February and March 2016 to -12.0%.

PART 4: LOCAL AUTHORITY DISTRICT AND WARD ANALYSIS

4.1 Cheltenham Borough continued...

Figure 6: Claimant rates across Cheltenham Borough wards - March 2016

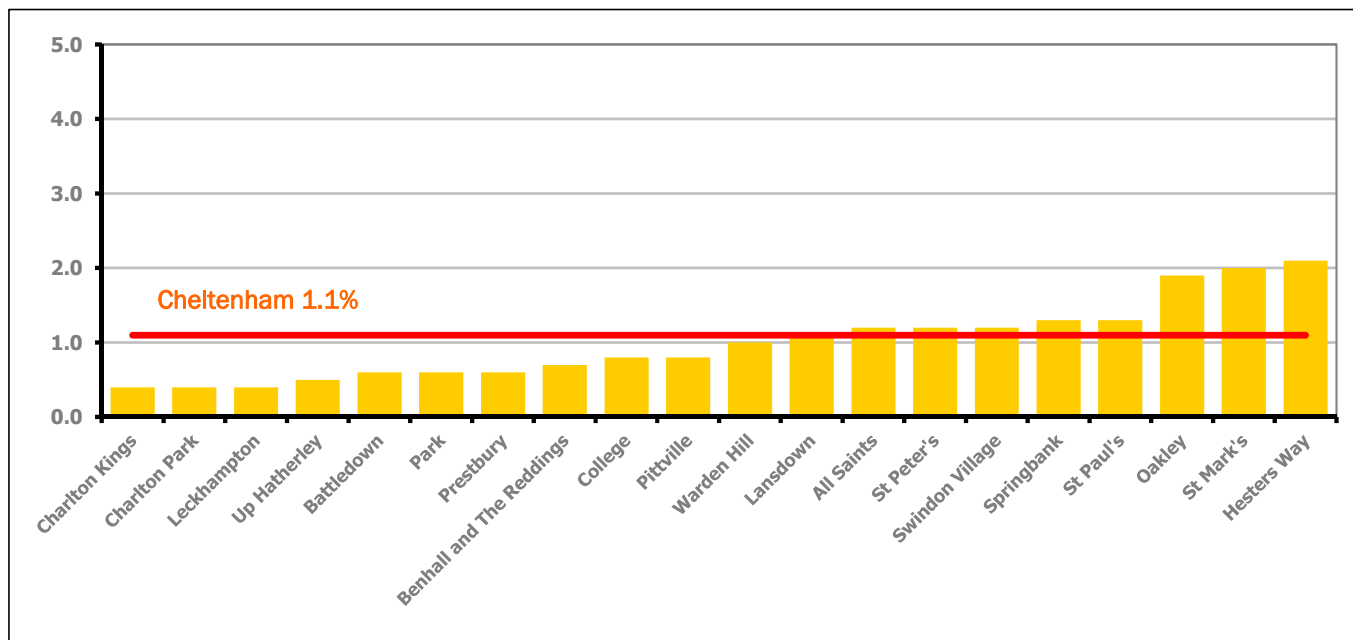


Figure 6 shows the claimant rates for Cheltenham Borough wards. The red line represents the average claimant rate across the Borough of 1.1%. Eight wards lie above the average.

Table 5: Analysis of Claimant Count at Cheltenham Borough ward level - March 2016

| District | Ward | Rate | Rank* |
|------------|--------------------------|------|-------|
| Cheltenham | Charlton Kings | 0.4 | 18 |
| Cheltenham | Charlton Park | 0.4 | 18 |
| Cheltenham | Leckhampton | 0.4 | 18 |
| Cheltenham | Up Hatherley | 0.5 | 32 |
| Cheltenham | Battledown | 0.6 | 38 |
| Cheltenham | Park | 0.6 | 38 |
| Cheltenham | Prestbury | 0.6 | 38 |
| Cheltenham | Benhall and The Reddings | 0.7 | 54 |
| Cheltenham | College | 0.8 | 64 |
| Cheltenham | Pittville | 0.8 | 64 |
| Cheltenham | Warden Hill | 1.0 | 91 |
| Cheltenham | Lansdown | 1.1 | 101 |
| Cheltenham | All Saints | 1.2 | 108 |
| Cheltenham | St Peter's | 1.2 | 108 |
| Cheltenham | Swindon Village | 1.2 | 108 |
| Cheltenham | Springbank | 1.3 | 113 |
| Cheltenham | St Paul's | 1.3 | 113 |
| Cheltenham | Oakley | 1.9 | 128 |
| Cheltenham | St Mark's | 2.0 | 131 |
| Cheltenham | Hesters Way | 2.1 | 132 |

lowest 10% of county
 first quartile of county
 second quartile of county
 third quartile of county
 fourth quartile of county
 highest 10% of county

* 1 = "best" and 142 = "worst"

Table 5 shows overall claimant rates for Cheltenham Borough wards and their position relative to all wards in Gloucestershire.

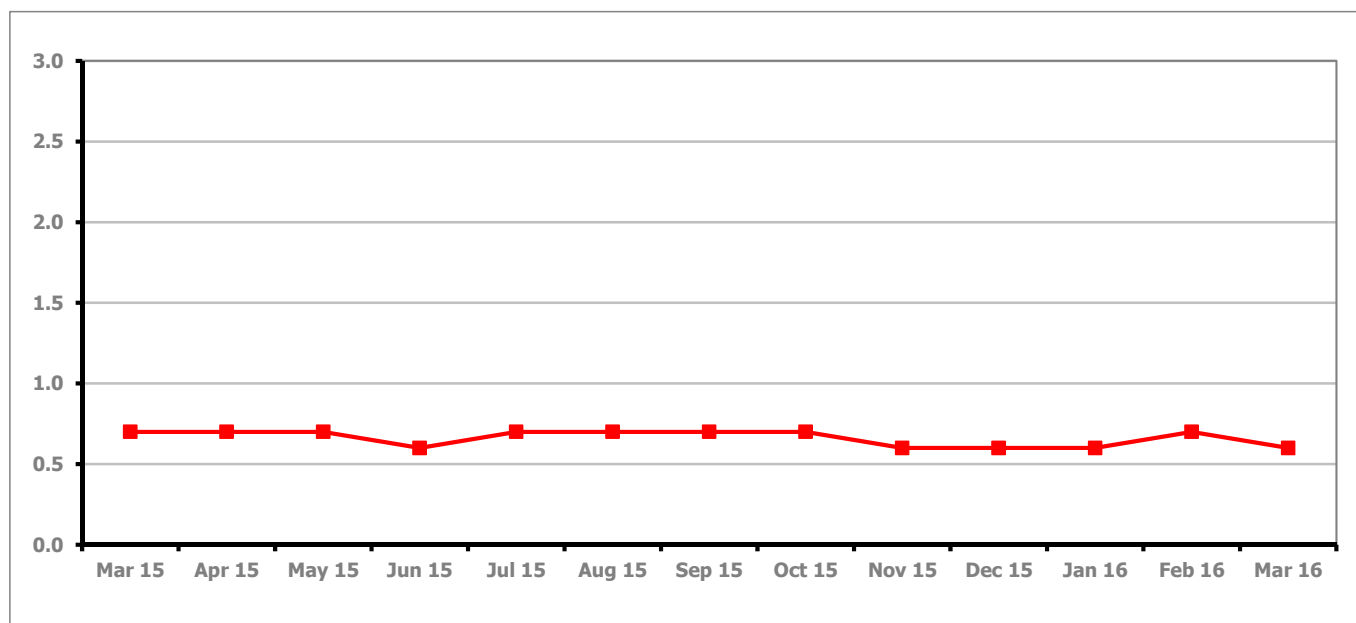
PART 4: LOCAL AUTHORITY DISTRICT AND WARD ANALYSIS**4.2 Cotswold District****Claimant Rate and Claimant Count***Figure 7: Cotswold District claimant rate over the last year*

Figure 7 shows the claimant rate in Cotswold District decreased in March 2016 to 0.6%.

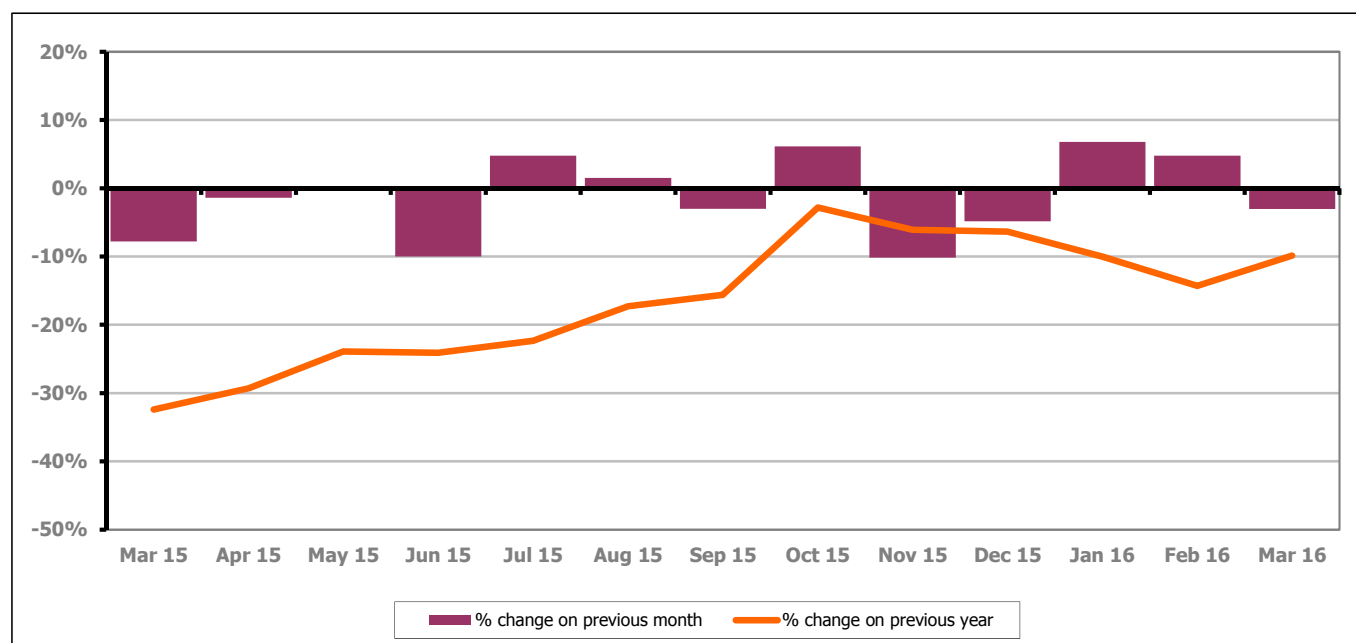
Figure 8: Cotswold District claimants - Month on Month and Year on Year change

Figure 8 shows the claimant count decreased by 3.0% since last month. The change on the previous year has increased between February and March 2016 to -9.9%.

PART 4: LOCAL AUTHORITY DISTRICT AND WARD ANALYSIS

4.2 Cotswold District continued...

Figure 9: Claimant rates across Cotswold District wards - March 2016

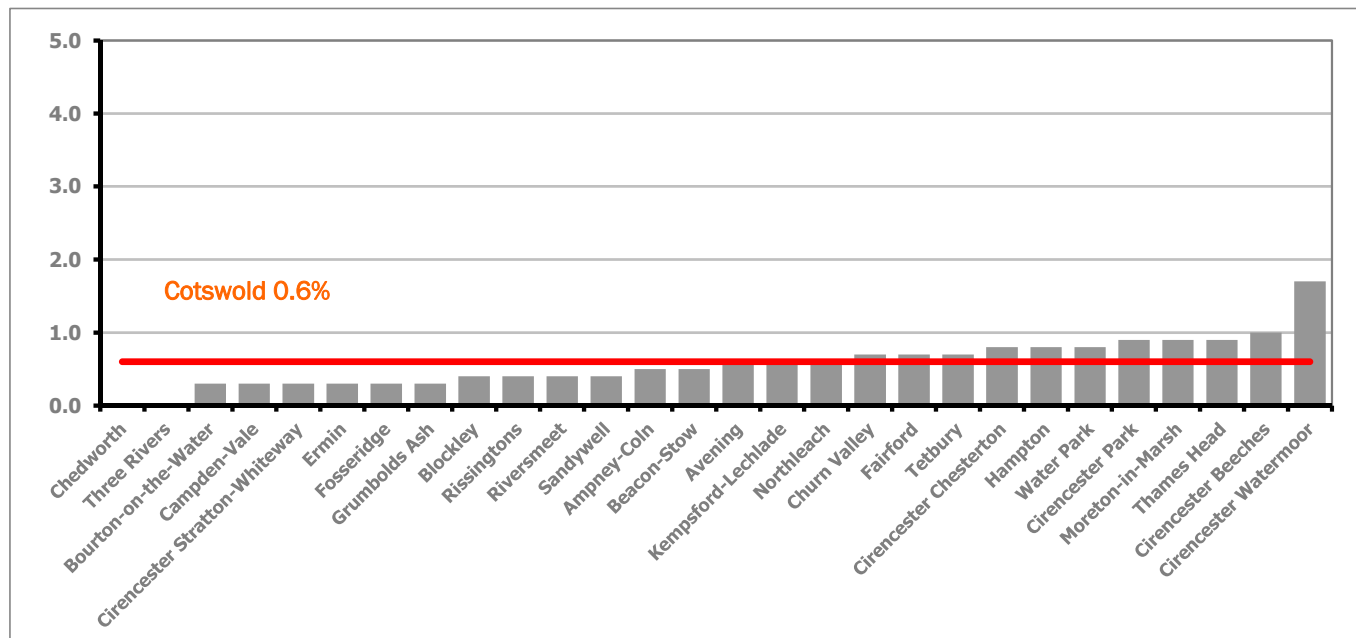
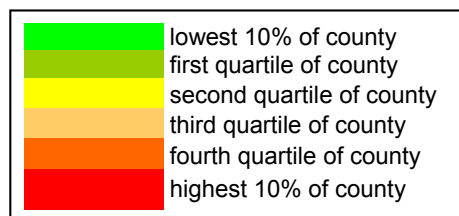


Figure 9 shows the claimant rates for Cotswold District wards. The red line represents the average claimant rate across the District of 0.6%. Eleven wards lie above the average.

Table 6: Analysis of Claimant Count at Cotswold District ward level - March 2016

| District | Ward | Rate | Rank* |
|-----------|-------------------------------|------|-------|
| Cotswolds | Chedworth | <0.3 | 1 |
| Cotswolds | Three Rivers | 0.0 | 1 |
| Cotswolds | Bourton-on-the-Water | 0.3 | 6 |
| Cotswolds | Campden-Vale | 0.3 | 6 |
| Cotswolds | Cirencester Stratton-Whiteway | 0.3 | 6 |
| Cotswolds | Ermin | 0.3 | 6 |
| Cotswolds | Fosseridge | 0.3 | 6 |
| Cotswolds | Grumbolds Ash | 0.3 | 6 |
| Cotswolds | Blockley | 0.4 | 18 |
| Cotswolds | Rissingtons | 0.4 | 18 |
| Cotswolds | Riversmeet | 0.4 | 18 |
| Cotswolds | Sandywell | 0.4 | 18 |
| Cotswolds | Ampney-Coln | 0.5 | 32 |
| Cotswolds | Beacon-Stow | 0.5 | 32 |
| Cotswolds | Avening | 0.6 | 38 |
| Cotswolds | Kempsford-Lechlade | 0.6 | 38 |
| Cotswolds | Northleach | 0.6 | 38 |
| Cotswolds | Churn Valley | 0.7 | 54 |
| Cotswolds | Fairford | 0.7 | 54 |
| Cotswolds | Tetbury | 0.7 | 54 |
| Cotswolds | Cirencester Chesterton | 0.8 | 64 |
| Cotswolds | Hampton | 0.8 | 64 |
| Cotswolds | Water Park | 0.8 | 64 |
| Cotswolds | Cirencester Park | 0.9 | 82 |
| Cotswolds | Moreton-in-Marsh | 0.9 | 82 |
| Cotswolds | Thames Head | 0.9 | 82 |
| Cotswolds | Cirencester Beeches | 1.0 | 91 |
| Cotswolds | Cirencester Watermoor | 1.7 | 125 |



* 1 = "best" and 142 = "worst"

Table 6 shows overall claimant rates for Cotswold District wards and their position relative to all wards in Gloucestershire.

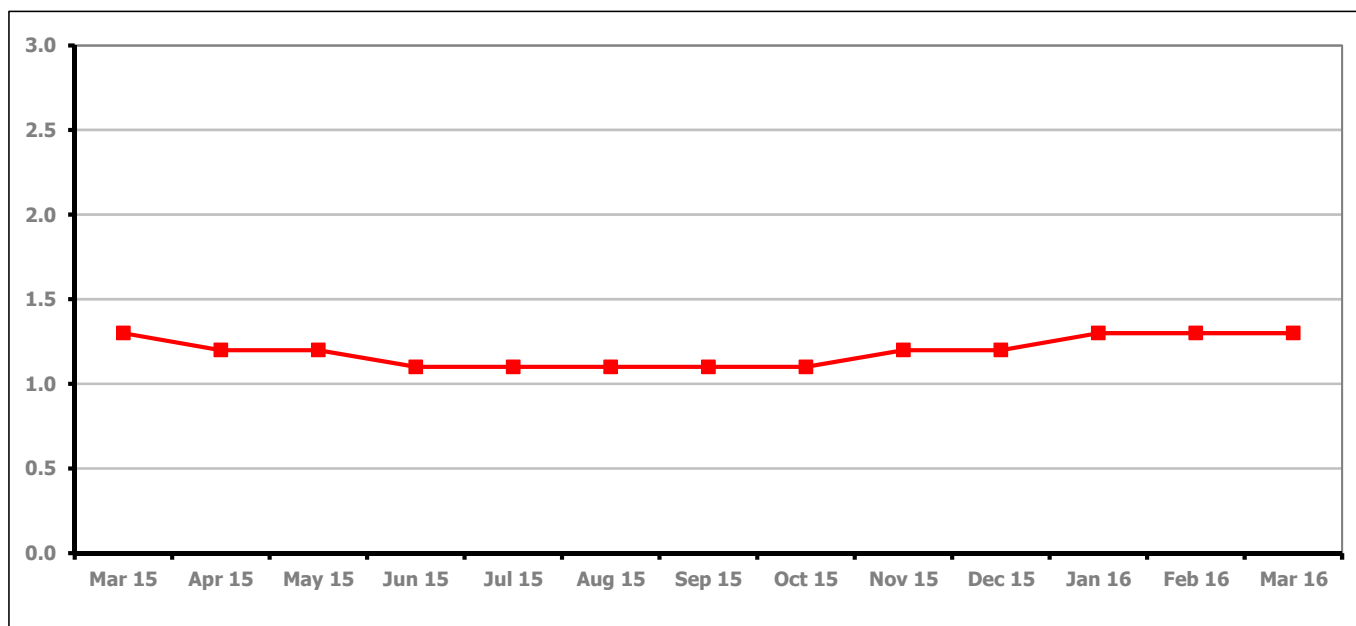
PART 4: LOCAL AUTHORITY DISTRICT AND WARD ANALYSIS**4.3 Forest of Dean District****Claimant Rate and Claimant Count***Figure 10: Forest of Dean District claimant rate over the last year*

Figure 10 shows the claimant rate in the Forest of Dean stayed the same as last month at 1.3%.

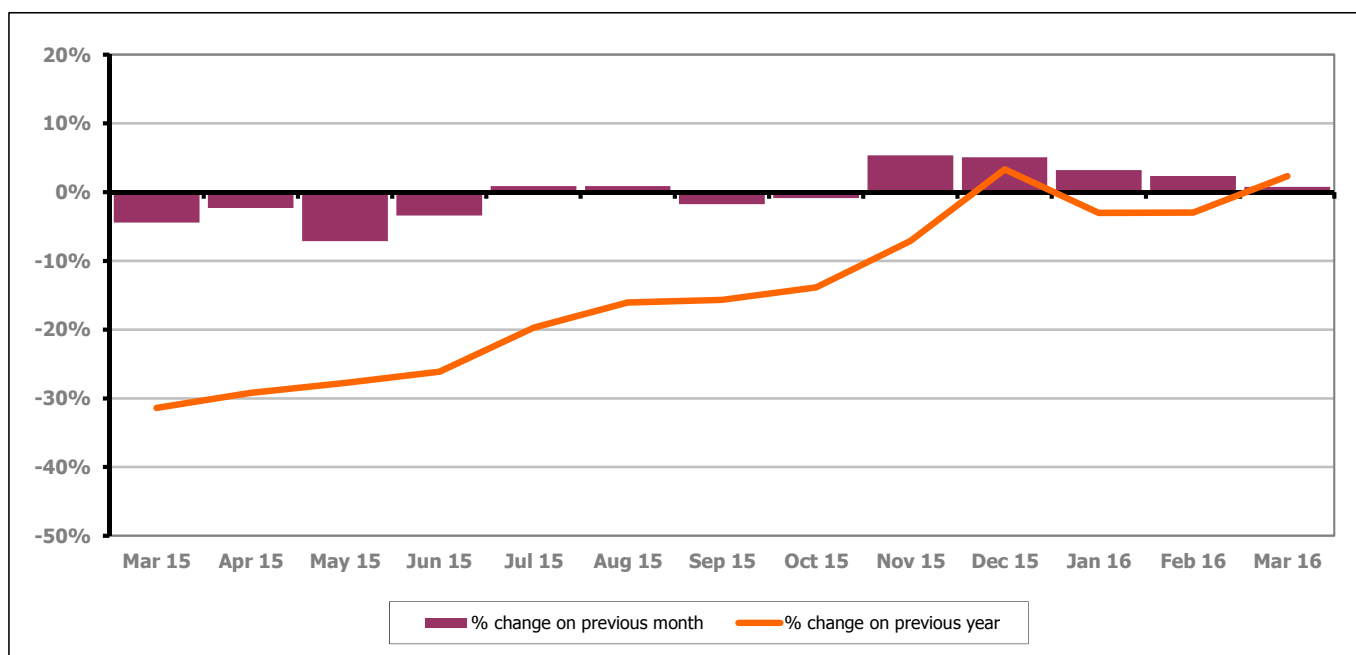
Figure 11: Forest of Dean District claimants - Month on Month and Year on Year change

Figure 11 shows the claimant count increased by 0.8% since February 2016. The change on the previous year has increased between February and March 2016 to 2.3%.

PART 4: LOCAL AUTHORITY DISTRICT AND WARD ANALYSIS

4.3 Forest of Dean District continued...

Figure 12: Claimant rates across Forest of Dean District wards - March 2016

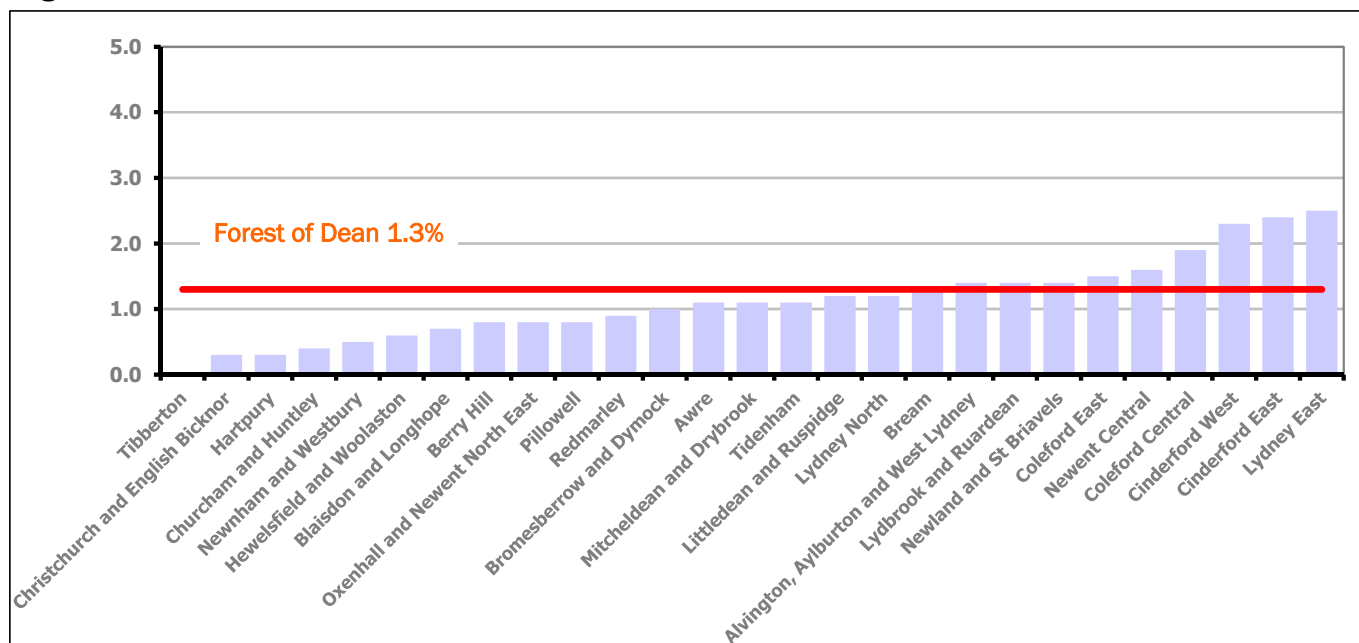
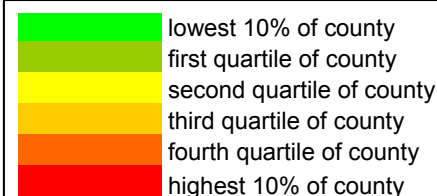


Figure 12 shows the claimant rates for Forest of Dean District wards. The red line represents the average claimant rate across the District of 1.3%. Nine wards lie above the average.

Table 7: Analysis of Claimant Count at Forest of Dean District ward level - March 2016

| District | Ward | Rate | Rank* |
|----------|--------------------------------------|------|-------|
| Forest | Tibberton | <0.3 | 1 |
| Forest | Christchurch and English Bicknor | 0.3 | 6 |
| Forest | Hartpury | 0.3 | 6 |
| Forest | Churcham and Huntley | 0.4 | 18 |
| Forest | Newnham and Westbury | 0.5 | 32 |
| Forest | Hewelsfield and Woolaston | 0.6 | 38 |
| Forest | Blaisdon and Longhope | 0.7 | 54 |
| Forest | Berry Hill | 0.8 | 64 |
| Forest | Oxenhall and Newent North East | 0.8 | 64 |
| Forest | Pillowell | 0.8 | 64 |
| Forest | Redmarley | 0.9 | 82 |
| Forest | Bromesberrow and Dymock | 1.0 | 91 |
| Forest | Awre | 1.1 | 101 |
| Forest | Mitcheldean and Drybrook | 1.1 | 101 |
| Forest | Tidenham | 1.1 | 101 |
| Forest | Littledean and Ruspidge | 1.2 | 108 |
| Forest | Lydney North | 1.2 | 108 |
| Forest | Bream | 1.3 | 113 |
| Forest | Alvington, Aylburton and West Lydney | 1.4 | 117 |
| Forest | Lydbrook and Ruardean | 1.4 | 117 |
| Forest | Newland and St Briavels | 1.4 | 117 |
| Forest | Coleford East | 1.5 | 122 |
| Forest | Newent Central | 1.6 | 123 |
| Forest | Coleford Central | 1.9 | 128 |
| Forest | Cinderford West | 2.3 | 133 |
| Forest | Cinderford East | 2.4 | 136 |
| Forest | Lydney East | 2.5 | 137 |



* 1 = "best" and 142 = "worst"

Table 7 shows overall claimant rates for the Forest of Dean District wards and their position relative to all wards in Gloucestershire.

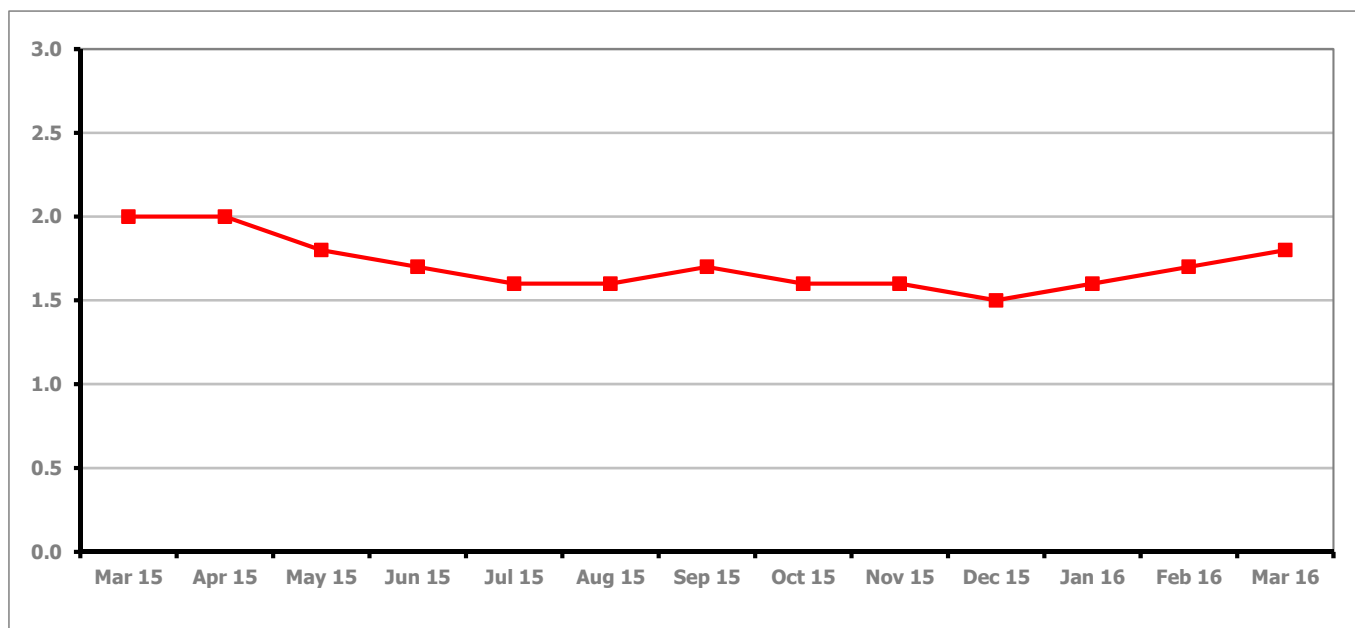
PART 4: LOCAL AUTHORITY DISTRICT AND WARD ANALYSIS**4.4 Gloucester City****Claimant Rate and Claimant Count***Figure 13: Gloucester City claimant rate over the last year*

Figure 13 shows the claimant rate for Gloucester City increased in March 2016 to 1.8%.

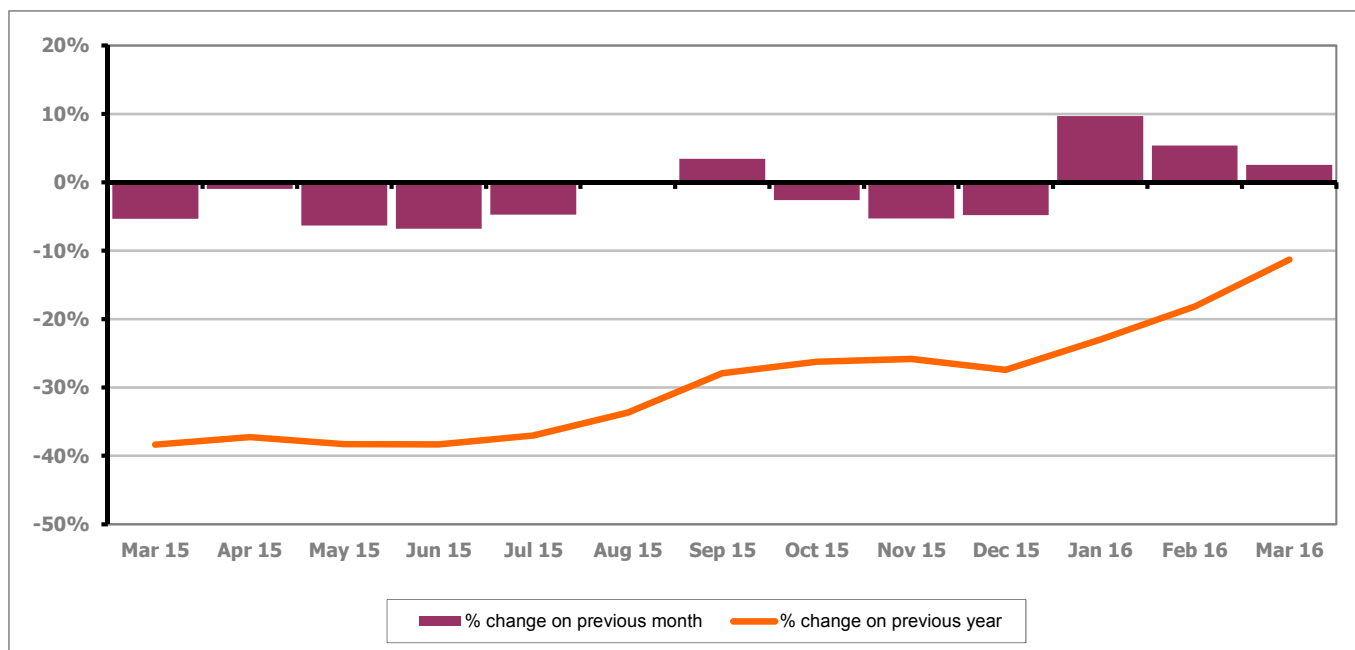
Figure 14: Gloucester City claimants - Month on Month and Year on Year change

Figure 14 shows the monthly claimant count increased by 2.5% since February 2016. The change on the previous year has increased between February and March 2016 to -11.3%.

PART 4: LOCAL AUTHORITY DISTRICT AND WARD ANALYSIS

4.4 Gloucester City continued...

Figure 15: Claimant rates across Gloucester City wards - March 2016

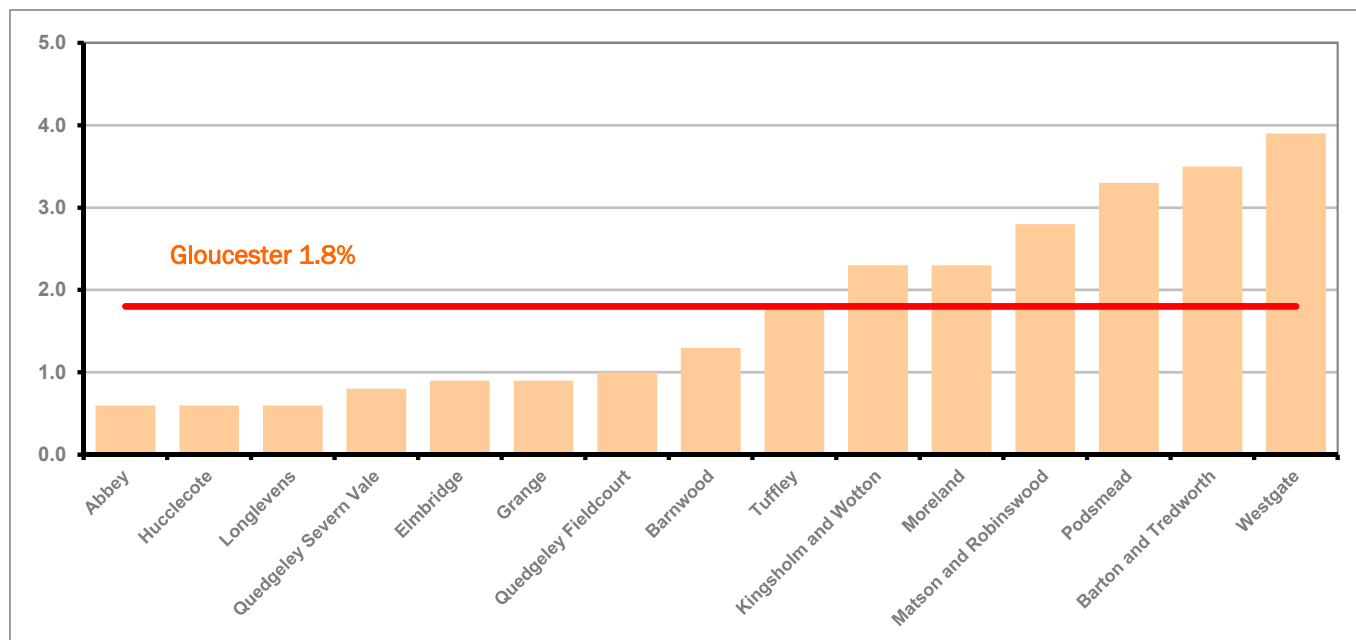
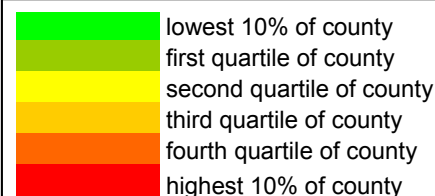


Figure 15 shows the claimant rates for Gloucester City district wards. The red line represents the average claimant rate across the City of 1.8%. Six wards lie above the average.

Table 8: Analysis of Claimant Count at Gloucester City ward level - March 2016

| District | Ward | Rate | Rank* |
|------------|-----------------------|------|-------|
| Gloucester | Abbey | 0.6 | 38 |
| Gloucester | Hucclecote | 0.6 | 38 |
| Gloucester | Longlevens | 0.6 | 38 |
| Gloucester | Quedgeley Severn Vale | 0.8 | 64 |
| Gloucester | Elmbridge | 0.9 | 82 |
| Gloucester | Grange | 0.9 | 82 |
| Gloucester | Quedgeley Fieldcourt | 1.0 | 91 |
| Gloucester | Barnwood | 1.3 | 113 |
| Gloucester | Tuffley | 1.8 | 127 |
| Gloucester | Kingsholm and Wotton | 2.3 | 133 |
| Gloucester | Moreland | 2.3 | 133 |
| Gloucester | Matson and Robinswood | 2.8 | 138 |
| Gloucester | Podsmead | 3.3 | 140 |
| Gloucester | Barton and Tredworth | 3.5 | 141 |
| Gloucester | Westgate | 3.9 | 142 |



* 1 = "best" and 142 = "worst"

Table 8 shows overall claimant rates for Gloucester City wards and their position relative to all wards in Gloucestershire.

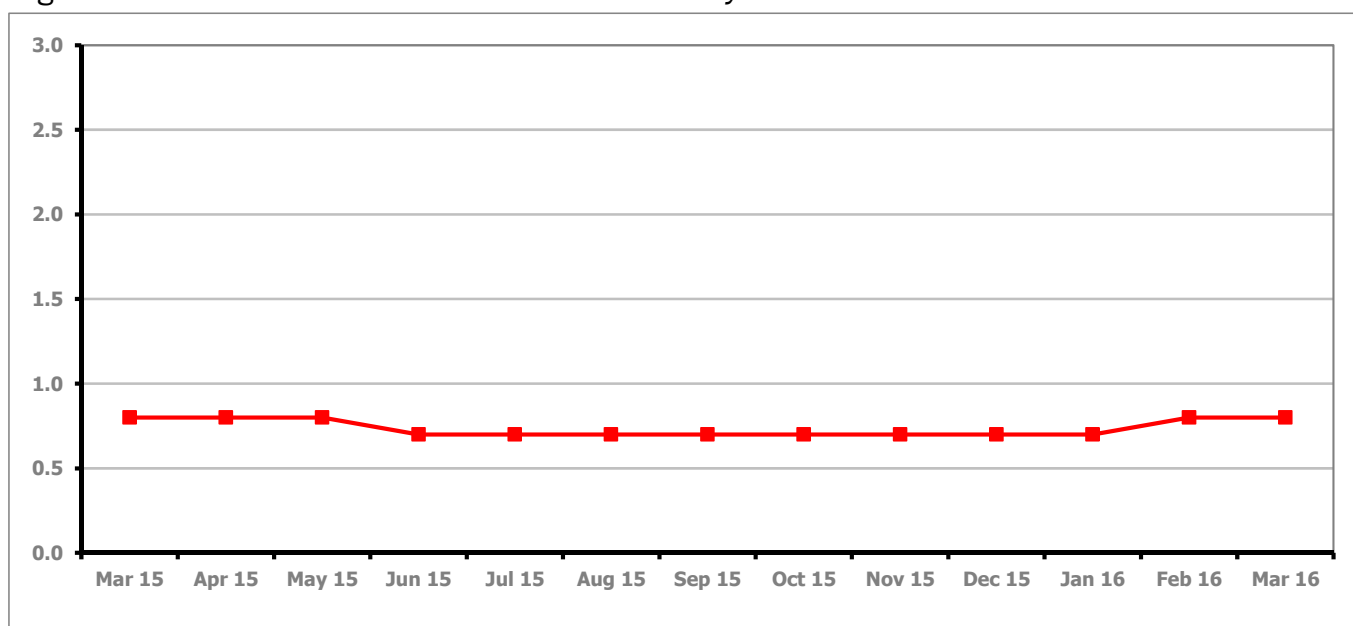
PART 4: LOCAL AUTHORITY DISTRICT AND WARD ANALYSIS**4.5 Stroud District****Claimant Rate and Claimant Count***Figure 16: Stroud District claimant rate over the last year*

Figure 16 shows the claimant rate for Stroud stayed the same as last month at 0.8%.

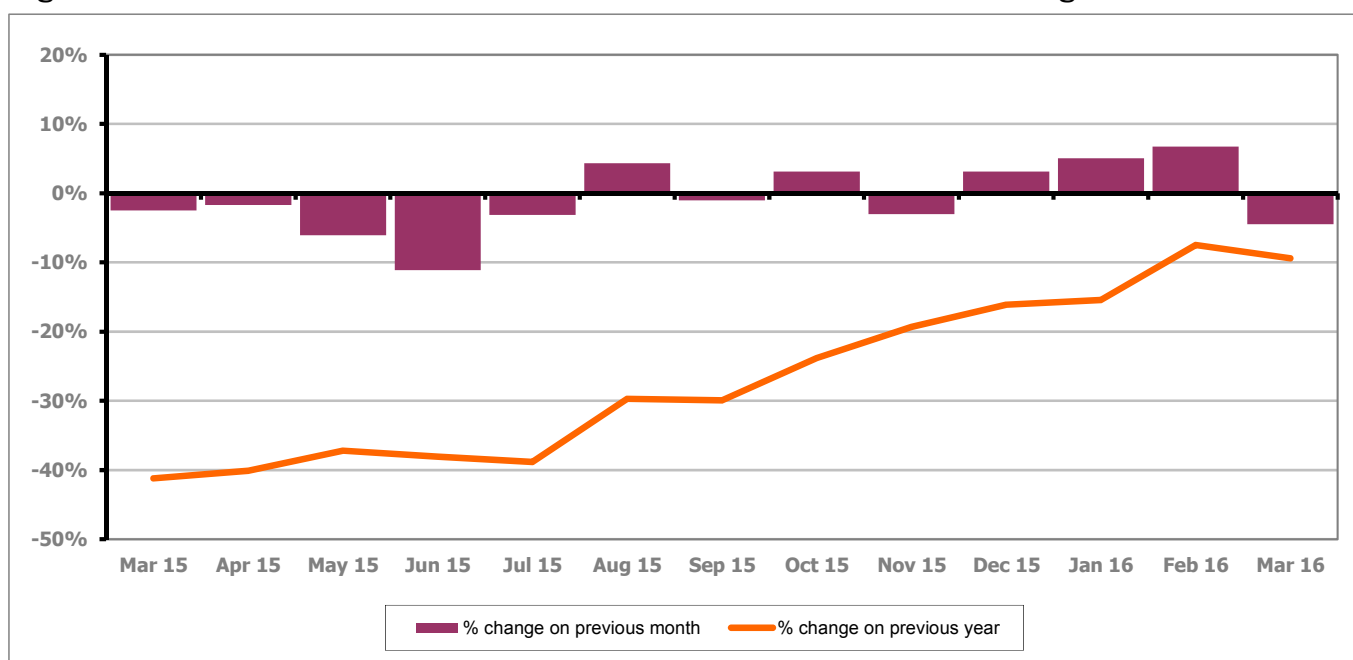
Figure 17: Stroud District claimants - Month on Month and Year on Year change

Figure 17 shows the monthly claimant count decreased by 4.5% since February 2016. The change on the previous year has decreased between February and March 2016 to -9.4%.

PART 4: LOCAL AUTHORITY AND DISTRICT ANALYSIS

4.5 Stroud District continued...

Figure 18: Claimant rates across Stroud District wards - March 2016

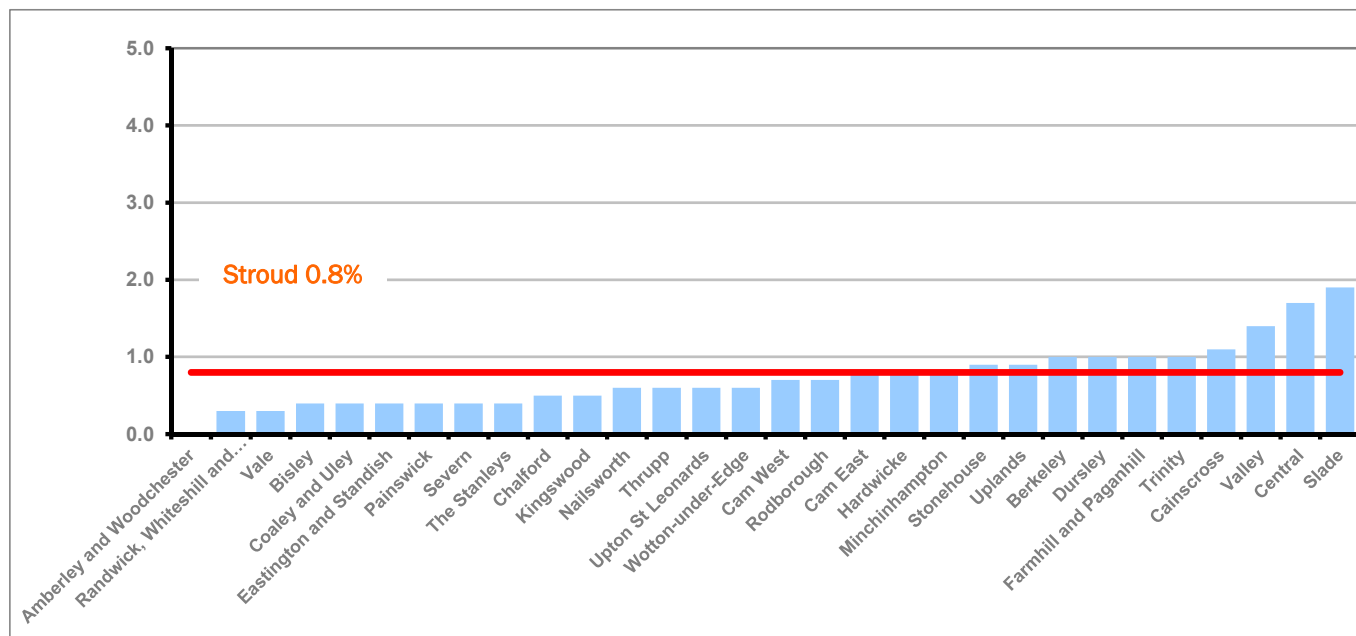
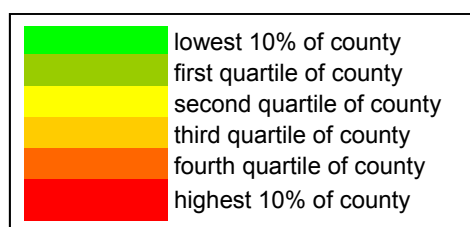


Figure 18 shows the claimant rates in Stroud District wards. The red line represents the average claimant rate across the District of 0.8%. Ten wards are above the average.

Table 9: Analysis of Claimant Count at Stroud District ward level - March 2016

| District | Ward | Rate | Rank* |
|----------|-----------------------------------|------|-------|
| Stroud | Amberley and Woodchester | <0.3 | 1 |
| Stroud | Randwick, Whiteshill and Ruscombe | 0.3 | 6 |
| Stroud | Vale | 0.3 | 6 |
| Stroud | Bisley | 0.4 | 18 |
| Stroud | Coaley and Uley | 0.4 | 18 |
| Stroud | Eastington and Standish | 0.4 | 18 |
| Stroud | Painswick | 0.4 | 18 |
| Stroud | Severn | 0.4 | 18 |
| Stroud | The Stanleys | 0.4 | 18 |
| Stroud | Chalford | 0.5 | 32 |
| Stroud | Kingswood | 0.5 | 32 |
| Stroud | Nailsworth | 0.6 | 38 |
| Stroud | Thrupp | 0.6 | 38 |
| Stroud | Upton St Leonards | 0.6 | 38 |
| Stroud | Wotton-under-Edge | 0.6 | 38 |
| Stroud | Cam West | 0.7 | 54 |
| Stroud | Rodborough | 0.7 | 54 |
| Stroud | Cam East | 0.8 | 64 |
| Stroud | Hardwicke | 0.8 | 64 |
| Stroud | Minchinhampton | 0.8 | 64 |
| Stroud | Stonehouse | 0.9 | 82 |
| Stroud | Uplands | 0.9 | 82 |
| Stroud | Berkeley | 1.0 | 91 |
| Stroud | Dursley | 1.0 | 91 |
| Stroud | Farmhill and Paganhill | 1.0 | 91 |
| Stroud | Trinity | 1.0 | 91 |
| Stroud | Cainscross | 1.1 | 101 |
| Stroud | Valley | 1.4 | 117 |
| Stroud | Central | 1.7 | 125 |
| Stroud | Slade | 1.9 | 128 |



* 1 = "best" and 142 = "worst"

Table 9 shows overall claimant rates for Stroud District wards and their position relative to all wards in Gloucestershire.

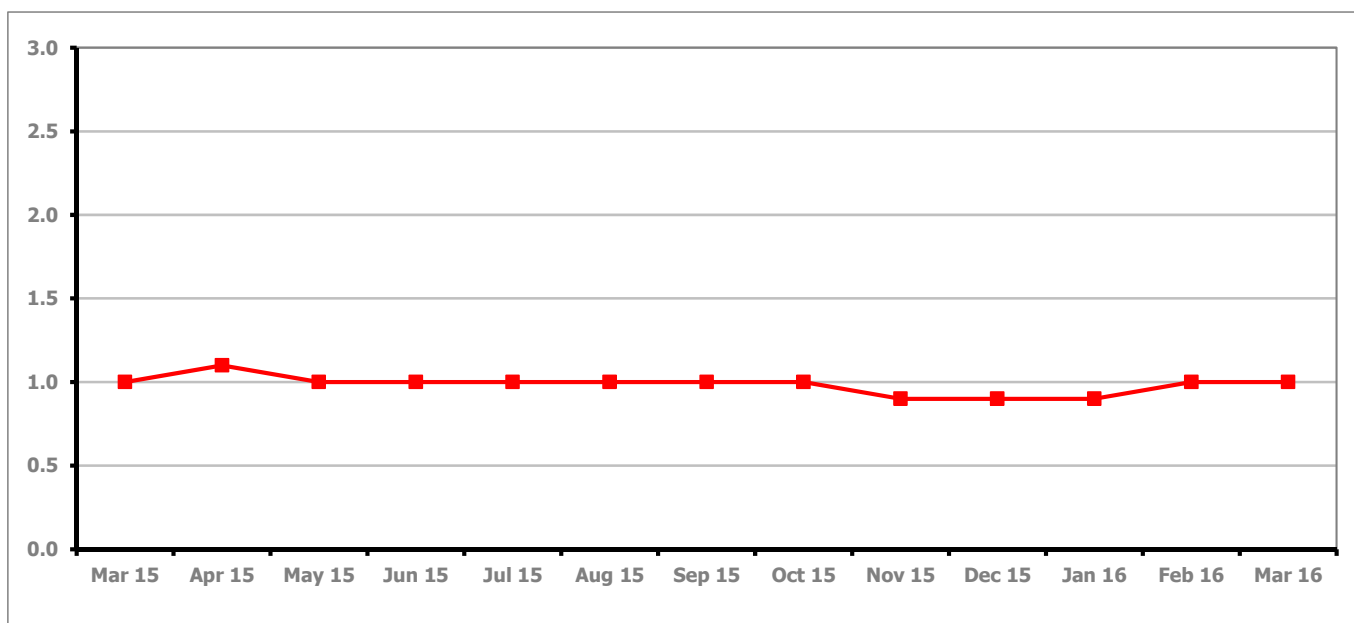
PART 4: LOCAL AUTHORITY DISTRICT AND WARD ANALYSIS**4.6 Tewkesbury District****Claimant Rate and Claimant Count***Figure 19: Tewkesbury District claimant rate over the last year*

Figure 19 shows the claimant rate for Tewkesbury District stayed the same as last month at 1.0%.

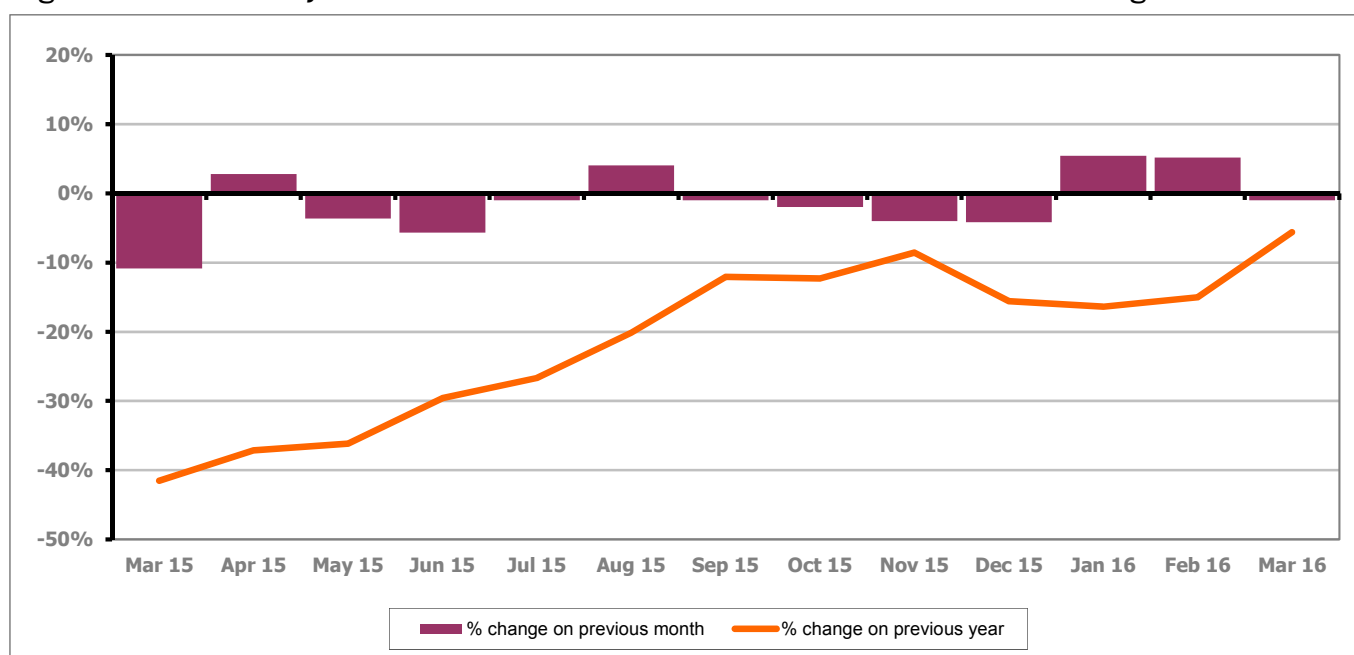
Figure 20: Tewkesbury District claimants - Month on Month and Year on Year change

Figure 20 shows that the monthly claimant count decreased by 1.0% since February 2016. The change on the previous year increased between February and March 2016 to -5.6%.

PART 4: LOCAL AUTHORITY AND DISTRICT ANALYSIS

4.6 Tewkesbury District continued...

Figure 21: Claimant rates across Tewkesbury District wards - March 2016

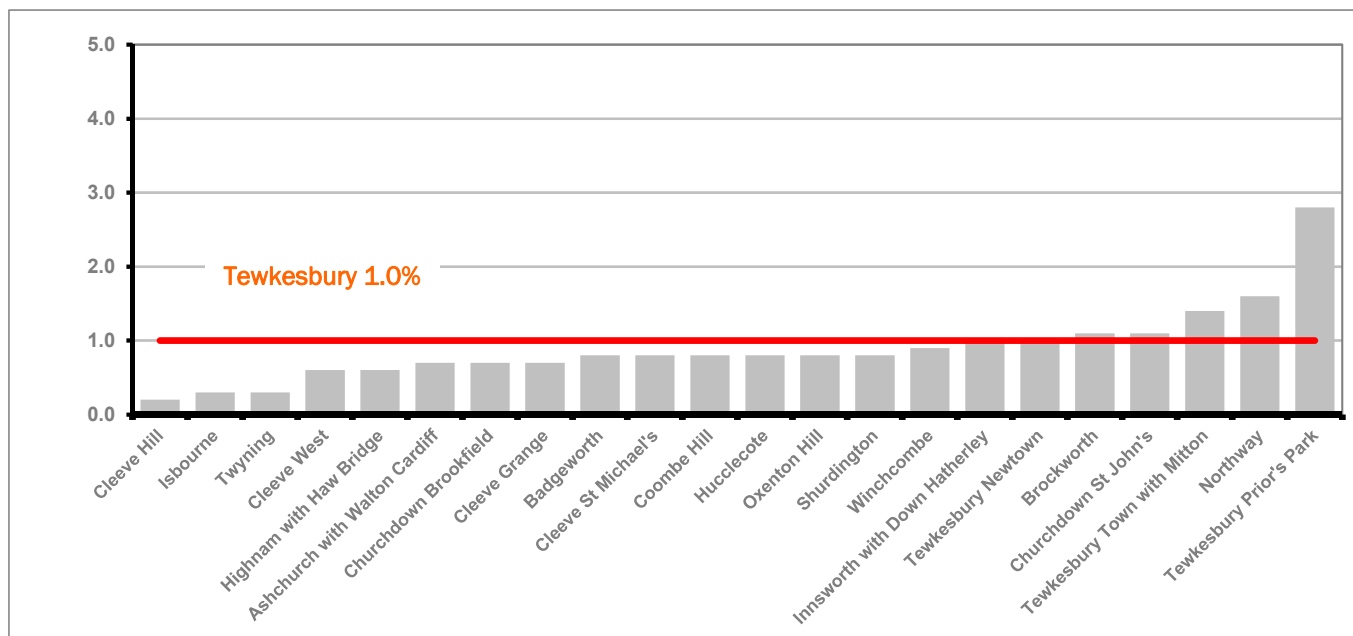


Figure 21 shows the claimant rates in Tewkesbury District wards. The red line represents the average claimant rate across the District of 1.0% and five wards are above the average.

Table 10: Analysis of Claimant Count at Tewkesbury District level - March 2016

| District | Ward | Rate | Rank* |
|------------|-------------------------------|------|-------|
| Tewkesbury | Cleeve Hill | 0.2 | 5 |
| Tewkesbury | Isbourne | 0.3 | 6 |
| Tewkesbury | Twyning | 0.3 | 6 |
| Tewkesbury | Cleeve West | 0.6 | 38 |
| Tewkesbury | Highnam with Haw Bridge | 0.6 | 38 |
| Tewkesbury | Ashchurch with Walton Cardiff | 0.7 | 54 |
| Tewkesbury | Churchdown Brookfield | 0.7 | 54 |
| Tewkesbury | Cleeve Grange | 0.7 | 54 |
| Tewkesbury | Badgeworth | 0.8 | 64 |
| Tewkesbury | Cleeve St Michael's | 0.8 | 64 |
| Tewkesbury | Coombe Hill | 0.8 | 64 |
| Tewkesbury | Hucclecote | 0.8 | 64 |
| Tewkesbury | Oxenton Hill | 0.8 | 64 |
| Tewkesbury | Shurdington | 0.8 | 64 |
| Tewkesbury | Winchcombe | 0.9 | 82 |
| Tewkesbury | Innsworth with Down Hatherley | 1.0 | 91 |
| Tewkesbury | Tewkesbury Newtown | 1.0 | 91 |
| Tewkesbury | Brockworth | 1.1 | 101 |
| Tewkesbury | Churchdown St John's | 1.1 | 101 |
| Tewkesbury | Tewkesbury Town with Mitton | 1.4 | 117 |
| Tewkesbury | Northway | 1.6 | 123 |
| Tewkesbury | Tewkesbury Prior's Park | 2.8 | 138 |

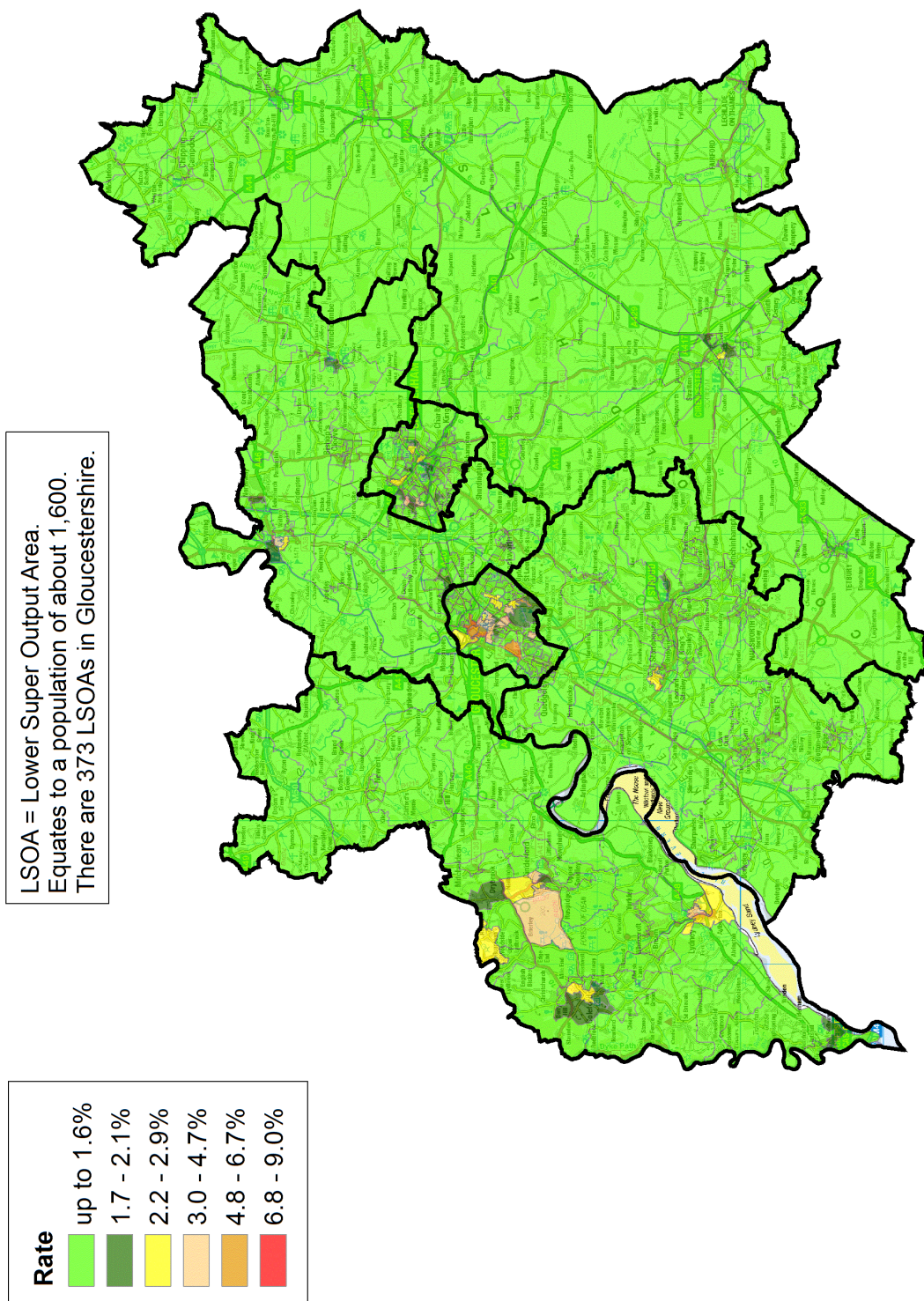
| | |
|--|---------------------------|
| | lowest 10% of county |
| | first quartile of county |
| | second quartile of county |
| | third quartile of county |
| | fourth quartile of county |
| | highest 10% of county |

* 1 = "best" and 142 = "worst"

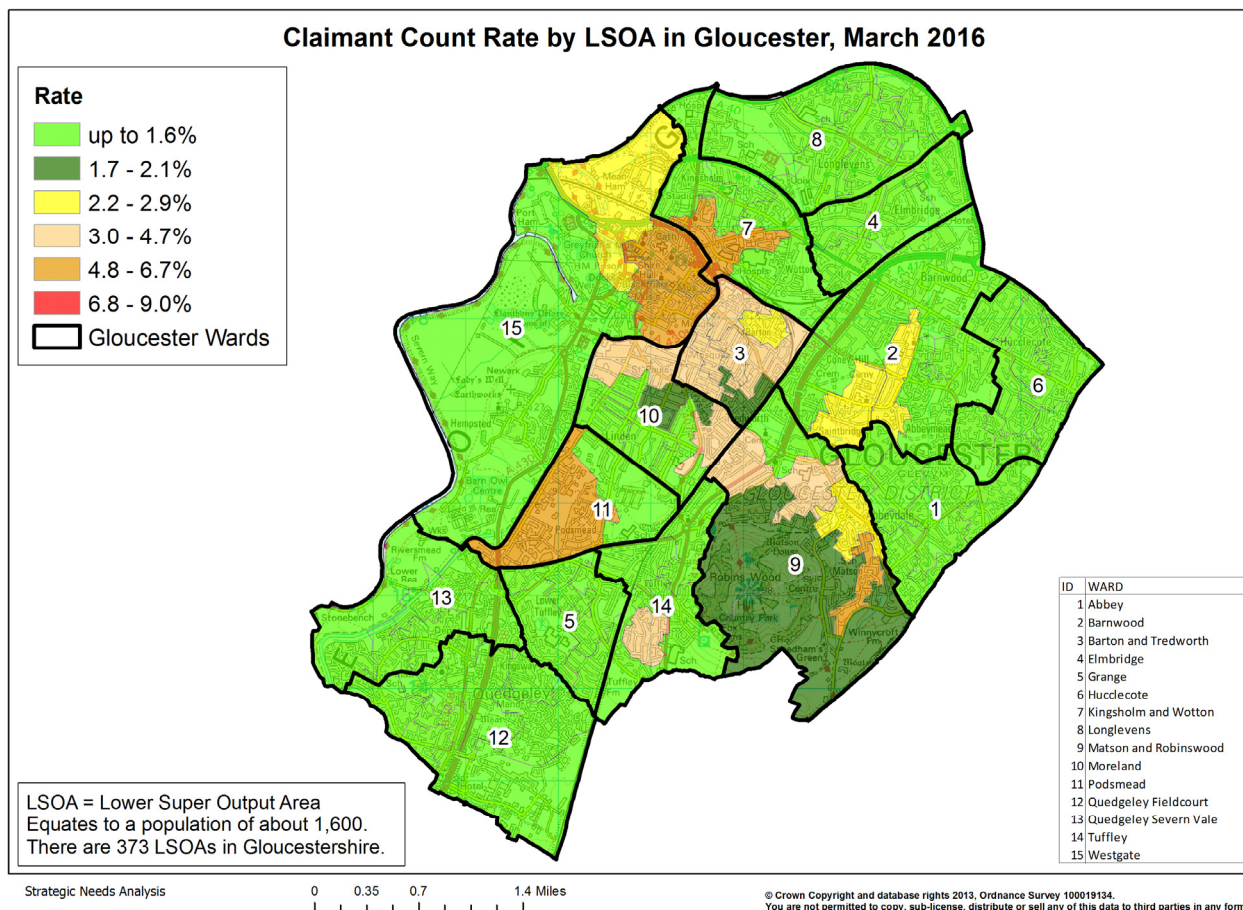
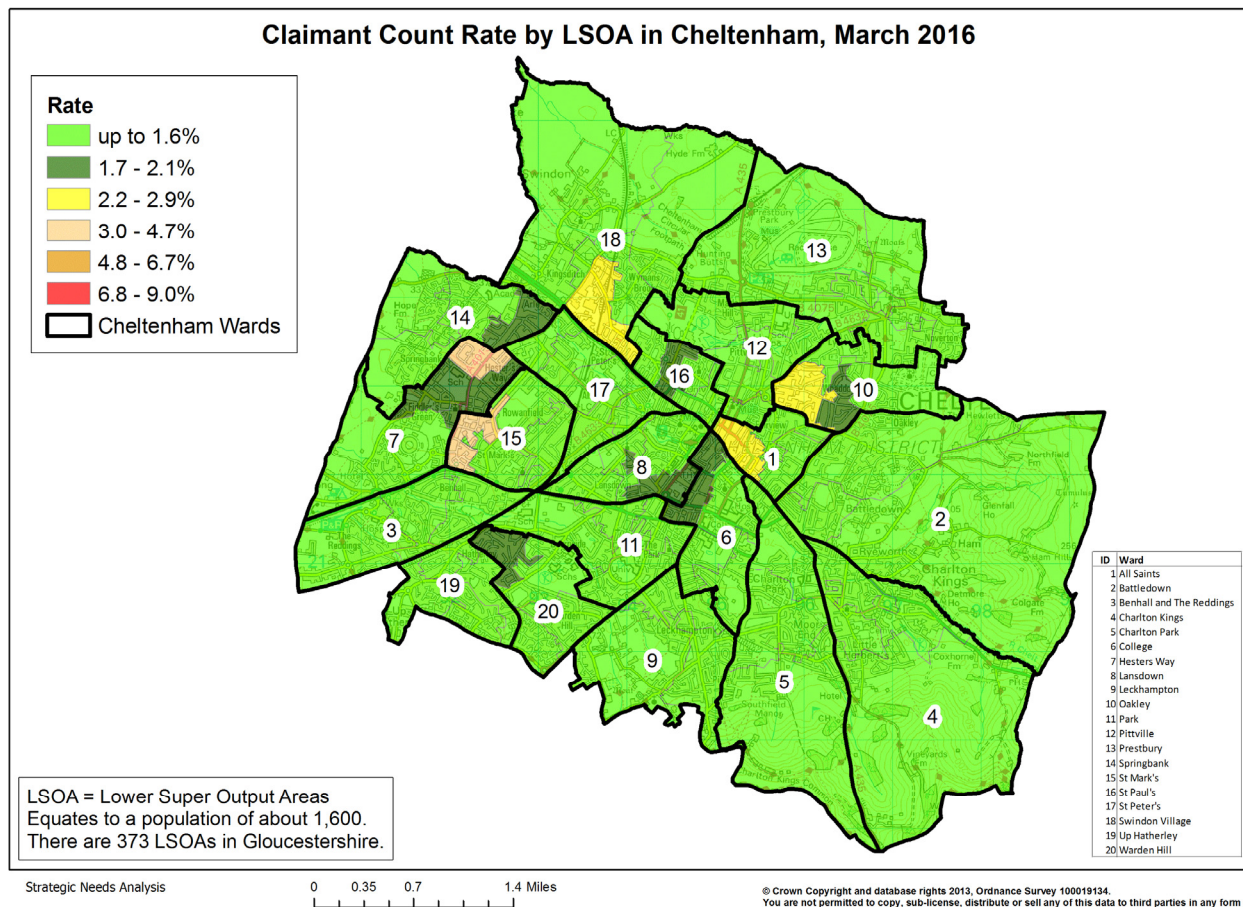
Table 10 shows overall claimant rates for Tewkesbury District wards and their position relative to all wards in Gloucestershire.

PART 5: MAP SHOWING DISTRIBUTION OF CLAIMANT RATE ACROSS GLOUCESTERSHIRE

Claimant Count Rate by LSOA in Gloucestershire, March 2016



PART 5: MAP SHOWING DISTRIBUTION OF CLAIMANT RATE ACROSS GLOUCESTERSHIRE



PART 6: YOUTH UNEMPLOYMENT(18-24 year olds)

Youth Claimant Rate and Claimant Count

Figure 22: Claimant Count for Gloucestershire over the past year

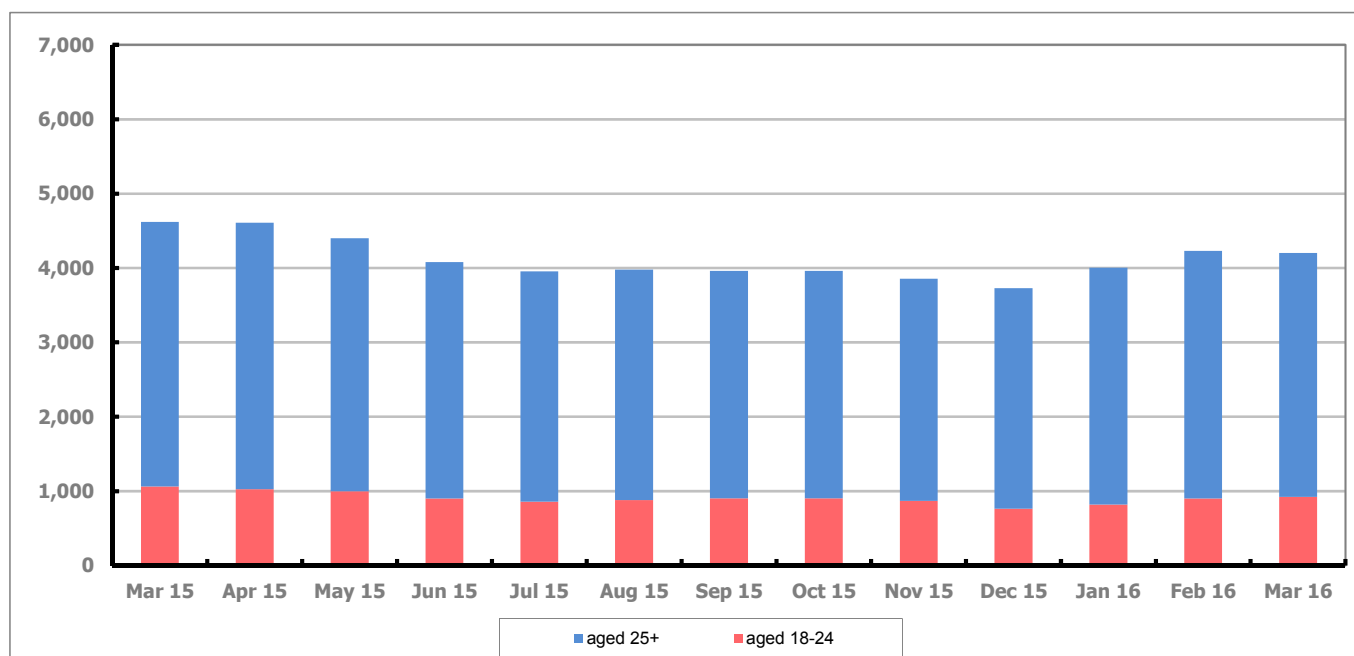


Figure 22 shows that in March 2016, 920 people aged 18-24 were claiming Job Seekers Allowance and Universal Credit who were not in work in Gloucestershire, this represents 21.7% of total working age claimants.

Figure 23: Youth Claimant Rate for Gloucestershire, the South West and UK over the past year

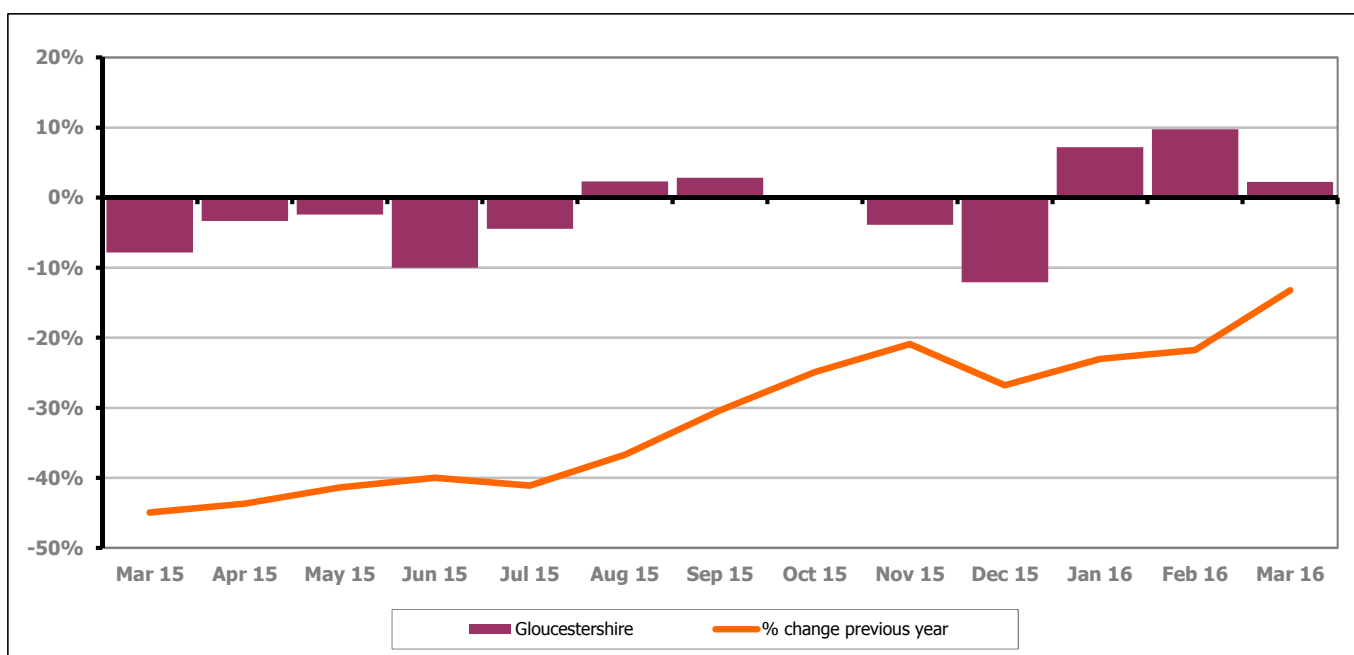


Figure 23 shows the number of young claimants increased in March 2016 by 2.2% this represented 20 people. Over the last year the number of young claimants fell by 13.2% or 140 people.

PART 7: YOUNG PEOPLE NOT IN EDUCATION, EMPLOYMENT OR TRAINING (NEET) IN GLOUCESTERSHIRE

Data provided by Gloucestershire Youth Support Team on the situation of young people (16-18) in Gloucestershire who are not in education, employment or formal training.

Gloucestershire Youth Support Team is required to report performance with the 16-18 age range against nationally defined criteria for counting the NEET group. The NEET group includes young people actively seeking education, employment or training as well as those young people who are either not yet ready or who are unable to access these opportunities because of their personal circumstances. The figures quoted below include young people in both of these categories.

Summary

At the end of March 2016 there were 459 young people aged 16-18 not in education, employment or training in Gloucestershire and this figure translates into an adjusted (*) 16-18 NEET population of 3.09%. The total number of NEET young people decreased by 52 in March 2016 compared to February 2016, all six districts saw a decrease in their figure.

Total NEET Group by District Area

March 2016 NEET data

| | Cheltenham | Cotswold | Forest | Gloucester | Stroud | Tewkesbury | Total |
|-------------------|------------|----------|--------|------------|--------|------------|-------|
| Total NEET | 78 | 37 | 73 | 150 | 72 | 49 | 459 |
| Cohort | 2637 | 2118 | 2184 | 3732 | 3154 | 2197 | 16022 |
| % NEET | 2.96 | 1.75 | 3.34 | 4.02 | 2.28 | 2.23 | 3.09* |

If you would like to receive any further information on Gloucestershire's NEET strategy then please contact Ruth.Critchlow@Prospects.co.uk or telephone 01452 426900.

(*) Adjustment includes a proportion of young people aged 16-18 whose outcomes are not known to Gloucestershire Youth Support Team.