

Civil Parking Enforcement in Gloucestershire

The county council's annual report on parking

Report on parking activities
for the period 2016 to 2017

www.gloucestershire.gov.uk



Gloucestershire
COUNTY COUNCIL



1. Introduction

Thank you for your interest in the Council’s work in managing parking.

The year 2016 to 2017 has seen an improvement to the way the Council deploys enforcement officers around the County effectively, detecting acts of antisocial parking found across the area, helping residents, businesses and visitors benefit from a well-managed on-street parking environment.

Contents	03	Introduction
	04	Gloucestershire parking review
	08-15	Pay & Display income
	16	Contract Management
	16	Enforcement
	17	On-street parking
	18-21	PCN payment and issue by district
	22-23	CCTV bus lane enforcement
	24-25	PCN life cycle
	26	Challenges and Representations
	27-30	Permit, waiver and other income
31-33	Park & Ride report	

The council has conducted its review of parking restrictions across the county with the introduction of three new permit schemes scheduled to be introduced in Cheltenham during 2017.

The year has also seen the consolidation of all of the various, and often confusing, parking Regulations (Traffic Regulation Orders) into one concise document for all on-street parking using up-to-date language and references. This can be found on our website and will soon be joined by a new searchable on-line mapping service available to all.

2. Gloucestershire parking review 2016/17

The Gloucestershire Parking Review is a series of projects looking at on-street parking restrictions in towns across the County to ensure the available parking is being best managed to provide good access for residents, local businesses and their visitors/customers.

In 2016/17, the review has focussed on the final phase of Cheltenham town centre, Cheltenham Race Course, the North Cotswold market towns, and Cirencester town centre regeneration.

Following initial public consultation in 2015/16, three new permit schemes in western Cheltenham were presented for statutory TRO consultation in May 2016. After consideration of the feedback, a decision was taken to implement the schemes with a number of design updates, and this work is scheduled for early 2017/18. The consultation identified a lot of concerns amongst commuters and local businesses relating to travel options and viable alternatives to car trips – the County Council has been supporting local businesses to identify options, and develop effective travel plans to enable their staff to travel sustainably.

There are no plans to consider further new permit zones in Cheltenham. The final stage of

the Cheltenham Parking Review will be an evaluation phase to understand the impact of the twelve new permit zones, and identify any minor design updates that may be required.

Consultation regarding a parking scheme to manage the impact of major events at Cheltenham Racecourse has concluded and a new 'Event day' permit scheme was implemented for The Open in November 2016 and The Festival in March 2017. Local residents have indicated it has greatly improved parking congestion at these times, and it has successfully provided a more consistent, effective approach to managing events.

Discussions have continued with local stakeholders in the North Cotswolds market towns – particularly Moreton In Marsh following a public consultation in July 2015. A new Town Council administration decided that no on-street changes should be considered until they had improved management of the Town Council owned car park. The review work is therefore on-hold and the County Council has no plans to consider on-street changes unless the Town Council request otherwise.

The County Council consulted on changes to restrictions in Cirencester Market Place to

support the Town Council lead regeneration works of the area. The new layout and operation of the road network required alterations to parking restrictions to reflect the changes and these have now been completed. The County continues to monitor the impact of the scheme, particularly with regard to access for Blue Badge holders.

The results of parking surveys in Stroud and Stonehouse were discussed with local stakeholders to identify if any changes should be considered to address identified issues. In Stonehouse, a light-touch approach was adopted, and after improvements were made to signposting for the High Street Car Park, no further measures were considered necessary. Stroud has recently had significant changes to parking restrictions in the core town centre, therefore no further measures were considered necessary.

Gloucestershire On-Street Parking Places Order 2017

All on-street parking restrictions (waiting, loading and stopping restrictions) are set out in a Traffic Regulation Order (TRO) which provides the legal basis for the restrictions placed on the highway. The Orders set out the rules and

regulations for using on-street parking places and areas such as:

- Identifying locations where parking is prohibited (e.g. single/double yellow lines)
- Setting maximum stays and/or parking charges;
- Setting out permit parking zones and who is eligible to purchase permits
- General conditions to ensure appropriate parking and use of the highway.

In Gloucestershire, there were six separate TROs describing the on-street parking restrictions in each of the six districts. These were last reviewed in 2007/8, since then, a number of significant changes to parking management have occurred. These include:

- The adoption of new technologies including a virtual permit system and pay-by-phone option.
- The adoption of a Permit Parking Policy setting out terms & conditions prices and permit types for permit schemes.
- The introduction of electric vehicle charging points

In addition, the current structure and wording of the Orders is difficult to follow and interpret. To address this, a new county-wide Order has been introduced to replace the previous Orders and:

- Take account of new technologies;
- Reflect current policies in relation to permit parking including terms of use, permit prices etc.

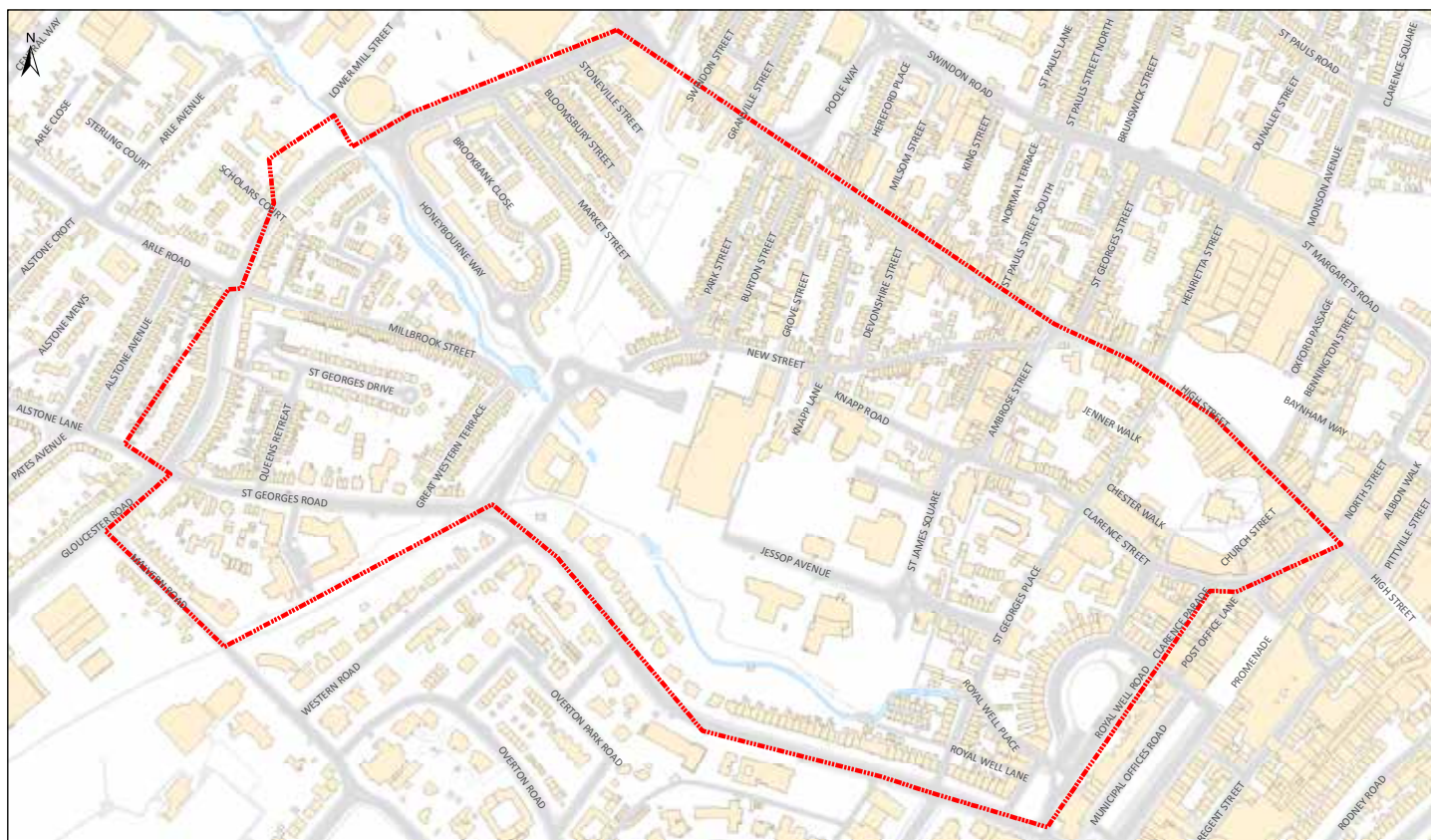
- Addressing inconsistencies between the six orders and administrative irregularities.
- Improve and update the definition of words and terms used in the order, based on current legislation
- Simplify the wording and structure of the Order to make it more understandable to customers.

The new Order came into force in January 2017 and now provides a consistent and clear basis for all parking restrictions in the County.

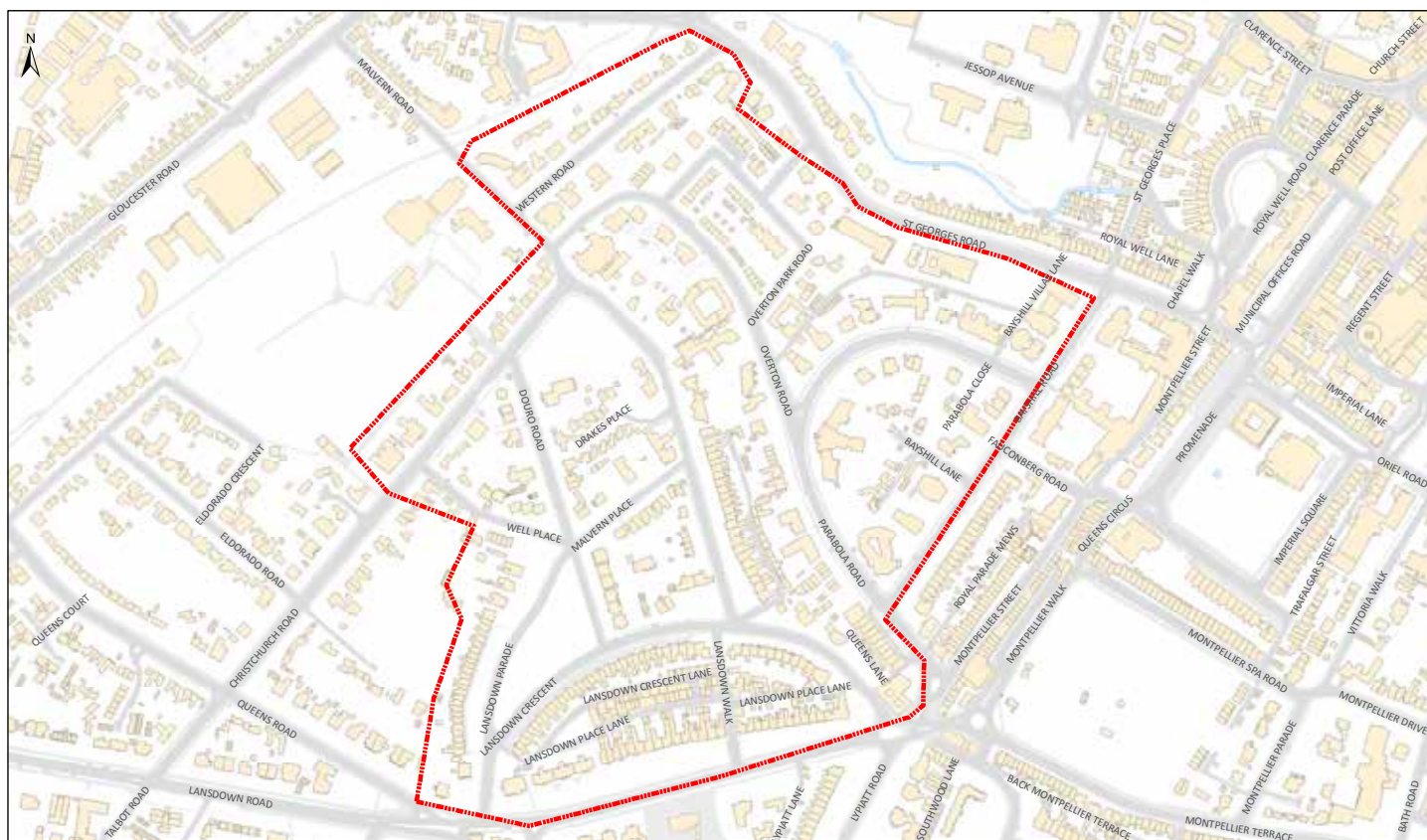
To view other permits scheme maps please type the following link into your web browser.

<http://www.gloucestershire.gov.uk/roads-parking-and-rights-of-way/parking/parking-permits-and-zone-maps/>

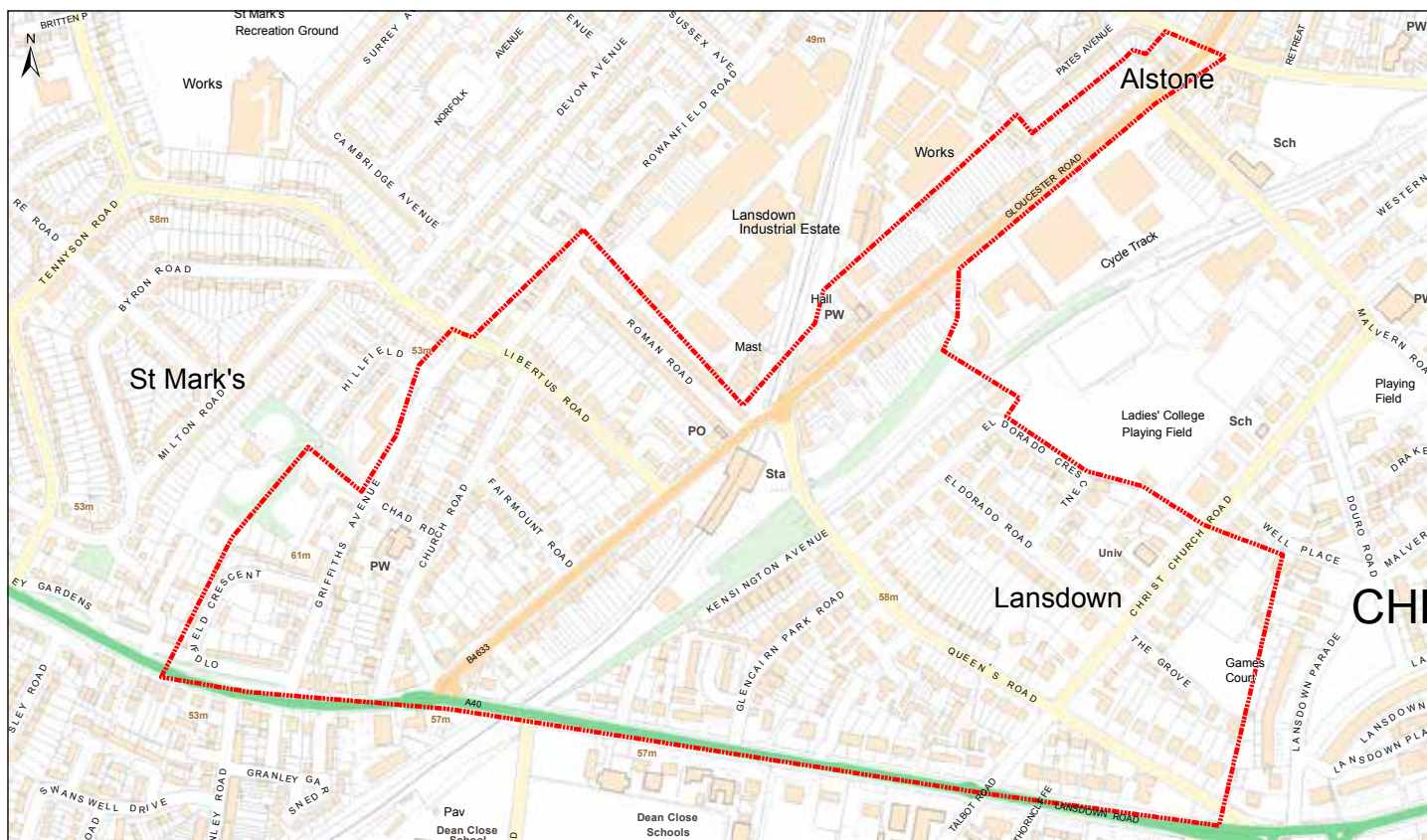
PERMIT PARKING ZONE: Cheltenham Westend Zone 12



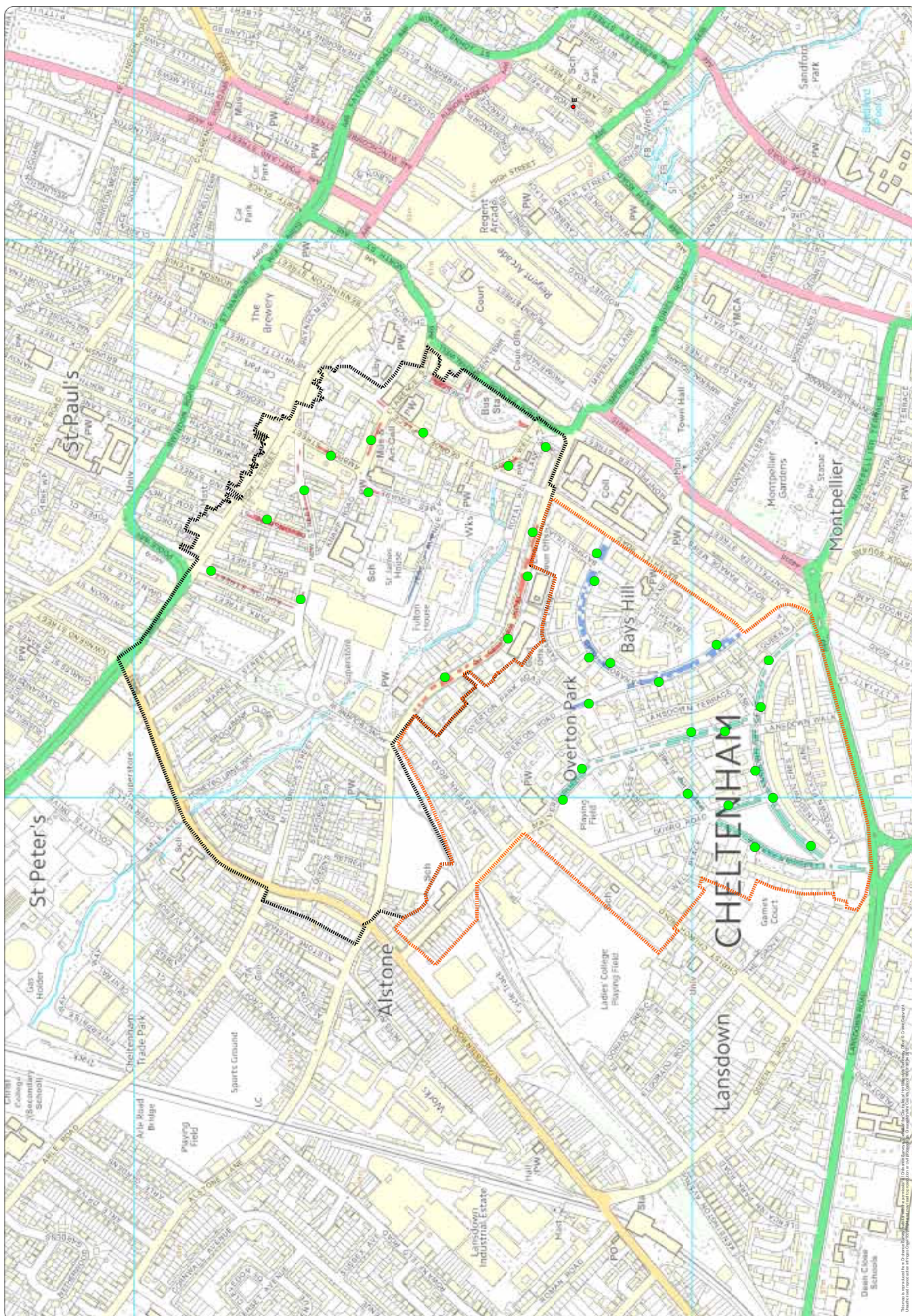
PERMIT PARKING ZONE: Cheltenham Lansdown Zone 13



PERMIT PARKING ZONE: Cheltenham Railway Zone 14



New Pay and Display Locations

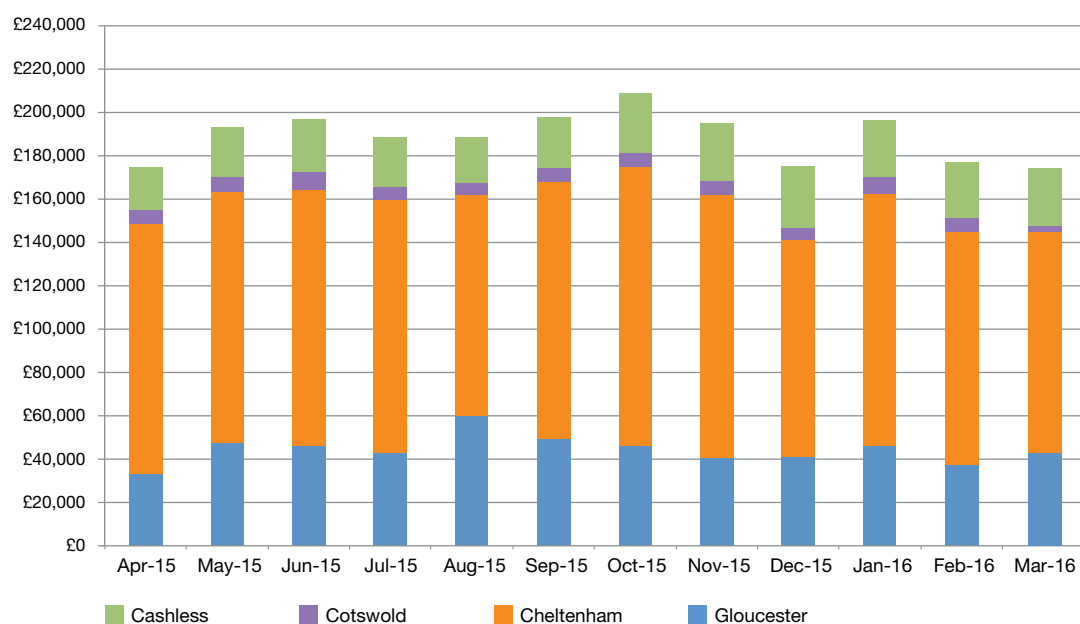




3. Pay & Display income

The following chart shows the income from on street Pay & Display parking in Cheltenham Borough, Cotswold District and Gloucester City Council areas.

The resulting income from on-street Pay & Display charges is approximately £160-£180,000 per month. One third of the income is collected from Gloucester, and two thirds from Cheltenham.

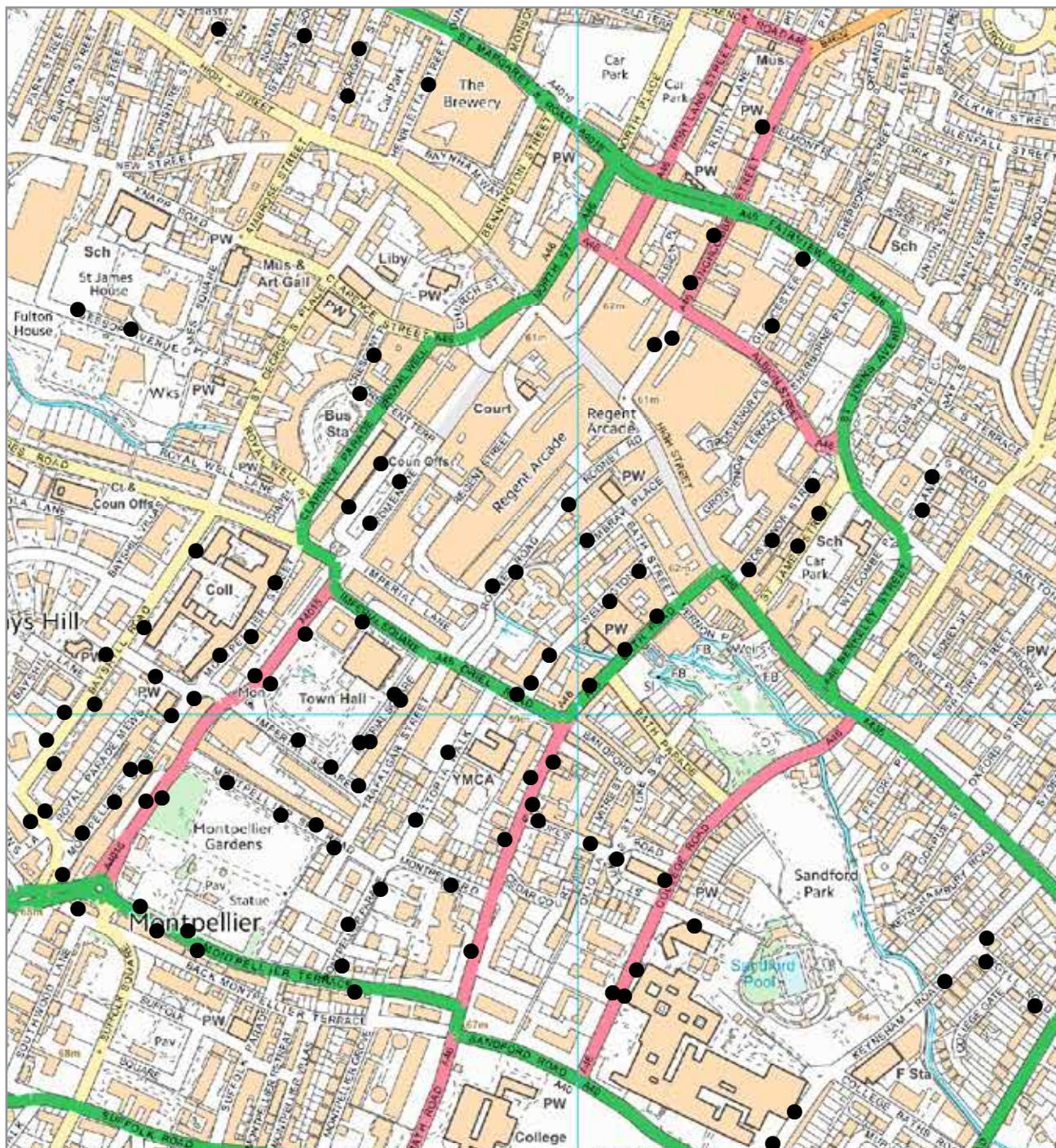


[Figure 2]
Pay & Display
income

Year totals: Cashless £292,393.30 Cheltenham £1,361,412.76
Cotswold £77,405.13 Gloucester £529,970.97

[Figure 3] Pay & Display machine locations in Cheltenham

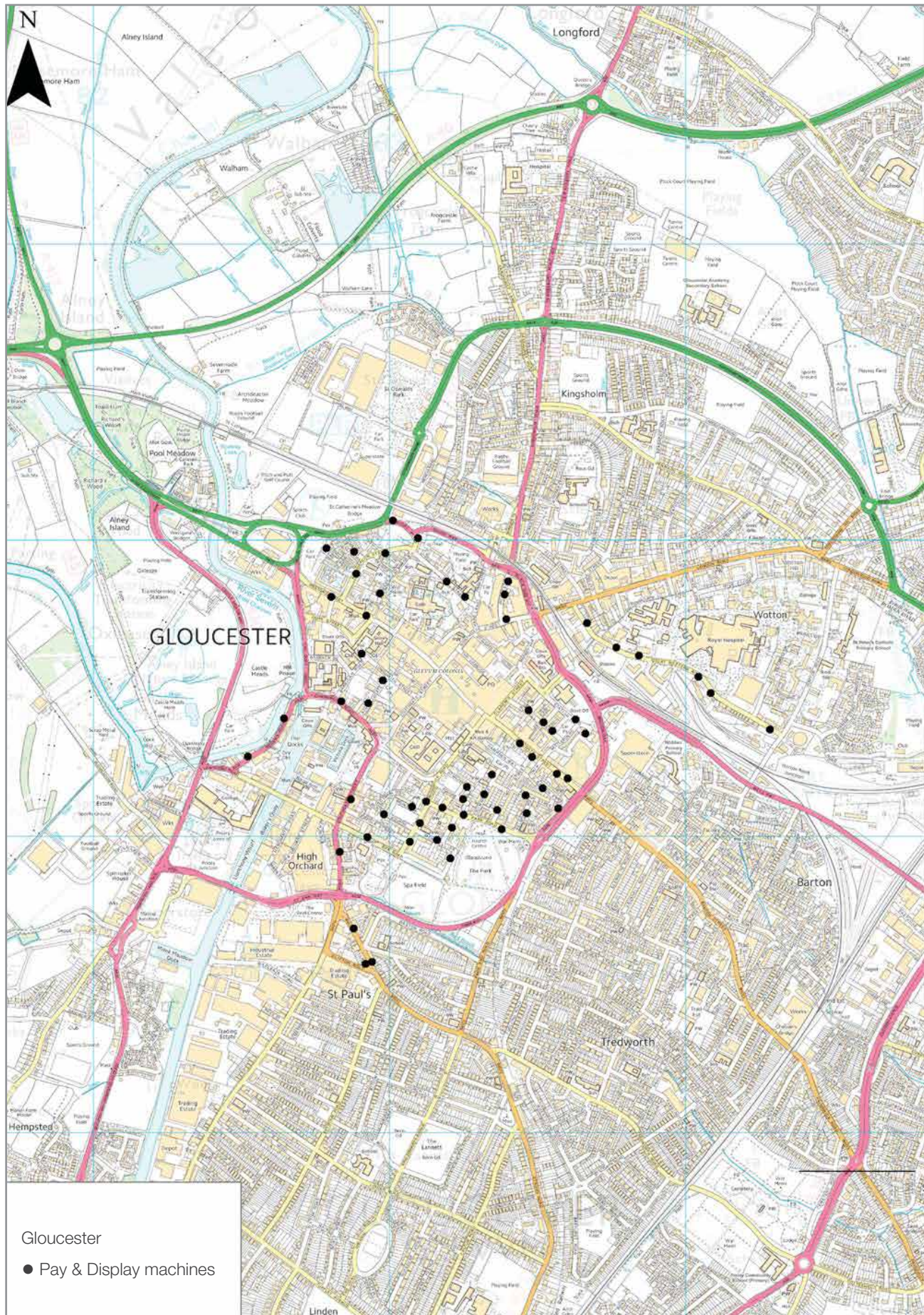
The diagrams on pages 9 and 10 show the location of Pay & Display machines in Cheltenham and Gloucester. In addition, there are two Pay & Display units in Cirencester Market Place.



Cheltenham

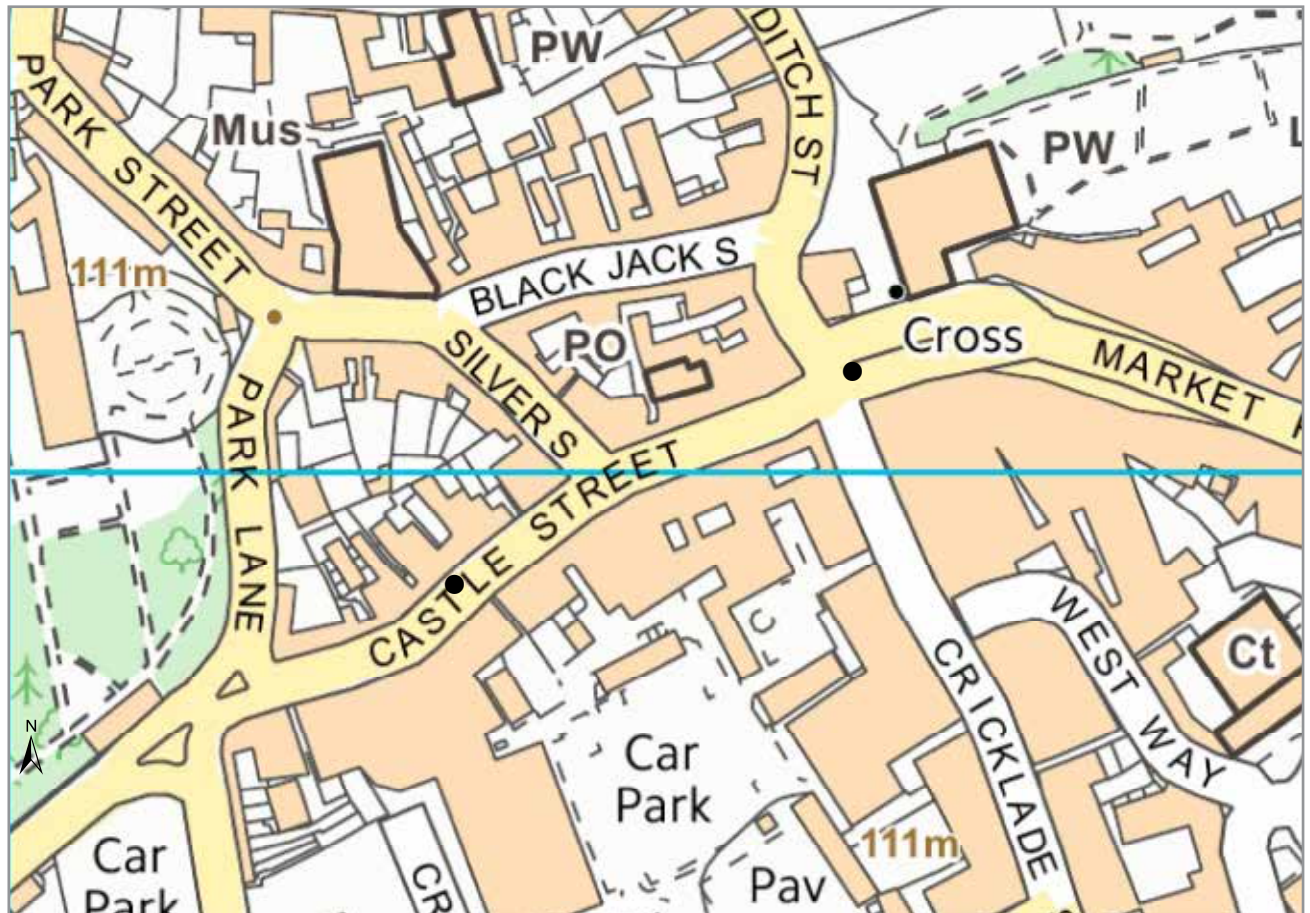
- Pay & Display machines

[Figure 4] Pay & Display machine locations in Gloucester



[Figure 5] Pay & Display machine locations in Cirencester

Maps reproduced from Ordnance Survey material with the permission of Ordnance Survey on behalf of the Controller of Her Majesty's Stationery Office © Crown Copyright. Unauthorised reproduction infringes Crown Copyright and may lead to prosecution or civil proceedings. Gloucestershire County Council 100019134 2015.



On-street Pay & Display tariffs

Location / Road	MiPermit Location Number	Charging Period											
		15 mins	30 mins	45 mins	1 hour	1.5 hours	2 hours	3 hours	4 hours	6 hours	8 hours	10 hours	12 hours
Cirencester													
Market Place	705566		£0.50		£1.00								
Castle Street	705566	£0.05/min (£0.50/hr), max stay 2hrs					£1.00						
Gloucester													
Eastgate Street	705540	£0.40	£0.70		£1.40	£2.10	£2.70						
Northgate Street	705622	£0.40	£0.70		£1.40	£2.10	£2.70						
Southgate Street	705551	£0.40	£0.70		£1.40	£2.10	£2.70						
Westgate Street	705558	£0.40	£0.70		£1.40	£2.10	£2.70						
Worcester Street	705559	£0.40	£0.70		£1.40	£2.10	£2.70						
Archdeacon Street	705531		£0.70		£1.40	£2.10	£2.70						
Arthur Street	705532		£0.70		£1.40	£2.10	£2.70						
Bearland	705533		£0.70		£1.40	£2.10	£2.70						
Bedford Street	705534		£0.70		£1.40	£2.10	£2.70						
Belgrave Road	705535		£0.70		£1.40	£2.10	£2.70						
Brunswick Road	705536		£0.70		£1.40	£2.10	£2.70						
Brunswick Square	705537		£0.70		£1.40	£2.10	£2.70						
Commercial Road	705538		£0.70		£1.40	£2.10	£2.70						
Cromwell Street	705539		£0.70		£1.40	£2.10	£2.70						
Kingsbarton Street	705541		£0.70		£1.40	£2.10	£2.70						
Ladybellegate Street	705542		£0.70		£1.40	£2.10	£2.70						
Montpellier	705543		£0.70		£1.40	£2.10	£2.70						
Mount Street	705544		£0.70		£1.40	£2.10	£2.70						
Park Road	705545		£0.70		£1.40	£2.10	£2.70						
Pitt Street	705546		£0.70		£1.40	£2.10	£2.70						
Prince Street	705547		£0.70		£1.40	£2.10	£2.70						
Priory Road	705548		£0.70		£1.40	£2.10	£2.70						
Russell Street	705549		£0.70		£1.40	£2.10	£2.70						
Severn Road	705550		£0.70		£1.40	£2.10	£2.70						
Spa Road	705552		£0.70		£1.40	£2.10	£2.70						
St Marys Square	705553		£0.70		£1.40	£2.10	£2.70						
St Marys Street	705554		£0.70		£1.40	£2.10	£2.70						
St Michaels Square	705555		£0.70		£1.40	£2.10	£2.70						
Station Road	705556		£0.70		£1.40	£2.10	£2.70						
Wellington Street	705557		£0.70		£1.40	£2.10	£2.70						
Upper Quay Street	705615		£0.70		£1.40	£2.10	£2.70						
Barbican Way	705612		£0.70		£1.40	£2.10	£2.70	£4.00	£5.00				
Stroud Road	705614				£1.50		£2.50						
Great Western Road	705613				£1.50		£3.00	£4.00	£5.00				

On-street Pay & Display tariffs

Location / Road	MiPermit Location Number	Charging Period											
		15 mins	30 mins	45 mins	1 hour	1.5 hours	2 hours	3 hours	4 hours	6 hours	8 hours	10 hours	12 hours
Cheltenham													
Inner Promenade	705578		£1.00		£1.70	£2.50	£3.30						
Promenade (North)	705581		£1.00		£1.70	£2.50	£3.30						
Rodney Road	705591 705619		£1.00		£1.70	£2.50	£3.30						
Cambray Place	705570		£1.00		£1.70	£2.50	£3.30						
Promenade South	705596				£1.50		£2.70		£5.50			£10.00	
Imperial Square	705576				£1.50		£2.70		£5.50			£10.00	
Montpellier Street	705585				£1.50		£2.70		£5.50			£10.00	
Suffolk Square	705595	£0.20	£0.40	£0.70	£1.00	£1.50	£2.00						
Fauconberg Road	705573	£0.20	£0.40	£0.70	£1.00	£1.50	£2.00						
Queens Circus	705573	£0.20	£0.40	£0.70	£1.00	£1.50	£2.00						
Montpellier Drive	705582	£0.20	£0.40	£0.70	£1.00	£1.50	£2.00						
Montpellier Street (between Montpellier Arcade and Fauconberg Road)	705618	£0.20	£0.40	£0.70	£1.00	£1.50	£2.00						
Montpellier Walk	705587	£0.20	£0.40	£0.70	£1.00	£1.50	£2.00						
Vittoria Walk	705597	£0.20	£0.40	£0.70	£1.00	£1.50	£2.00						
Montpellier Spa Road	705584	£0.20	£0.40	£0.70	£1.00	£1.50	£2.00	£4.00					
Montpellier Terrace	705586	£0.20	£0.40	£0.70	£1.00	£1.50	£2.00	£4.00					
Bath Road (between Montpellier Terrace and Montpellier Drive)	705617	£0.20	£0.40	£0.70	£1.00	£1.50	£2.00	£4.00	£5.00				
Bayshill Road	705569	£0.20	£0.40	£0.70	£1.00	£1.50	£2.00	£4.00	£5.00				
Montpellier Parade	705583	£0.20	£0.40	£0.70	£1.00	£1.50	£2.00	£4.00	£5.00				
Montpellier Street (between Parabola Road and Montpellier Arcade)	705618	£0.20	£0.40	£0.70	£1.00	£1.50	£2.00	£4.00	£5.00				
Parabola Road (between Montpellier Street and Bayshill road)	705618	£0.20	£0.40	£0.70	£1.00	£1.50	£2.00	£4.00	£5.00				
Bath Road (between Oriel Road and Cedar Court Road)	705616				£1.50		£3.00						
St Annes Road	705592				£1.00		£2.00						
Gloucester Place	705574				£1.50		£3.00						
Grosvenor Street	705575				£1.50		£3.00						
College Road	705571				£1.00		£2.00	£3.00	£4.00				
Keynsham Road	705580				£1.00		£2.00	£3.00	£4.00				
Argyll Road	705567				£1.00		£2.00	£3.00	£4.00				

On-street Pay & Display tariffs

Location / Road	MiPermit Location Number	Charging Period											
		15 mins	30 mins	45 mins	1 hour	1.5 hours	2 hours	3 hours	4 hours	6 hours	8 hours	10 hours	12 hours
St Lukes Road	705594 705620				£1.00		£2.00	£3.00	£4.00				
Orrisdale Terrace	705589				£1.00		£2.00	£3.00	£4.00				
King Street	705637	£0.05/min (£1/hr), max stay 2hrs					£2.00						
St Pauls Street South	705638	£0.05/min (£1/hr), max stay 2hrs					£2.00						
St Georges Street	705639	£0.05/min (£1/hr), max stay 2hrs					£2.00						
Henrietta Street	705640	£0.05/min (£1/hr), max stay 2hrs					£2.00						
Winchcombe Street (between High Street and Fairview Road)	705600				£1.60		£2.80	£3.80					
St James Street	705593				£1.60		£2.80	£3.80					
Wellington Street	705598				£1.60		£2.80	£3.80					
Oriel Road	705588				£1.60		£2.80	£3.80					
Bath Road (between High Street and Oriel Road)	705568				£1.60		£2.80	£3.80					
Jessop Avenue	705579				£1.30		£2.60	£3.90					£6.00
Clarence Square	705630	£0.05/min (£1.50/hr), max stay 2hrs					£3.00						
Evesham Road	705636	£0.05/min (£1.50/hr), max stay 2hrs					£3.00						
Pittville Lawn	705633	£0.05/min (£1.50/hr), max stay 2hrs					£3.00						
Prestbury Road	705634	£0.05/min (£1/hr), max stay 3hrs						£3.00					
Winchcombe Street (between Fairview Road and Clarence Road)	705635	£0.5/min (£1.50/hr), max stay 2hrs					£3.00						
Wellington Square	705631	£0.5/min (£1.50/hr), max stay 2hrs					£3.00						
St Georges Road	705642	£0.05/min (£1/hr), max stay 2hrs					£2.00						
Burton Street	705648	£0.05/min (£1/hr), max stay 2hrs					£2.00						
Devonshire Street	705650	£0.05/min (£1/hr), max stay 2hrs					£2.00						
New Street	705649	£0.05/min (£1/hr), max stay 2hrs					£2.00						
Ambrose Street	705651	£0.05/min (£1/hr), max stay 2hrs					£2.00						
Clarence Street	705653	£0.05/min (£1/hr), max stay 2hrs					£2.00						
St James Square	705652	£0.05/min (£1/hr), max stay 2hrs					£2.00						
St Georges Place	705654	£0.05/min (£1/hr), max stay 2hrs					£2.00						
Crescent Place	705623	£0.05/min (£1/hr), max stay 2hrs					£2.00						
Crescent Terrace	705572	£0.05/min (£1/hr), max stay 2hrs					£2.00						
Royal Well Place	705655	£0.05/min (£1/hr), max stay 2hrs					£2.00						
Chapel Walk	705656	£0.05/min (£1/hr), max stay 2hrs					£2.00						
Parabola Road	705656	£1 per hour (£0.05/min) for first 3 hours							£1.50 per hour (£0.05/min) up to 4 hours Max stay (£4.50)				

On-street Pay & Display tariffs

Location / Road	MiPermit Location Number	Charging Period											
		15 mins	30 mins	45 mins	1 hour	1.5 hours	2 hours	3 hours	4 hours	6 hours	8 hours	10 hours	12 hours
Overton Road	705644	£1 per hour (£0.05/min) for first 3 hours							£1.50 per hour (£0.05/min) up to 4 hours Max stay (£4.50)				
Lansdown Crescent	705645	£0.50p per hour (£0.05/min) up to maximum charge £4											
Lansdown Parade	705657	£0.50p per hour (£0.05/min) up to maximum charge £4											
Malvern Place	705647	£0.50p per hour (£0.05/min) up to maximum charge £4											
Douro Road	705646	£0.50p per hour (£0.05/min) up to maximum charge £4											
Malvern Road	705658	£0.50p per hour (£0.05/min) up to maximum charge £4											

MiPermit is Gloucestershire County Council's sole operator for cashless payments and tickets in Gloucestershire. Customers can use the mi permit location numbers (see the list above for MI Permit location numbers) to pay for parking using a debit or credit card rather than using cash.. MiPermit also offers greater flexibility as you can extend your stay without returning to the Pay & Display machine or you

can book your preferred location up to seven days in advance as a part of your daily routine. To apply on line please visit the following website: <https://secure.mipermit.com/gloucestershire>

We are also trialling a new pay by minute option (highlighted on page 10) which allows you to pay for parking by the minute. For example you can opt to park in Wellington

Square Cheltenham (MiPermit Location Number 705566) and pay only for the minutes you need or the change you have in your pocket. For further information please refer to the on-street Pay & Display tariff above.

On-street parking Income and Expenditure 2016/17

	£'000	£'000
Income		-4519
Expenditure		
Employee Related	211	
Premises Related	1	
Transport Related	2	
Supplies and Services	104	
Third Party Payments	1,332	
Depreciation	46	
Inter GCC Transfers	32	
Capital Financing Costs	130	
Central Support Recharge Elements	114	
		1,972
Net Income		-2,547

5. Contract management

GCC's parking team ensures a cost effective service is delivered with continued improvement in areas including:

- **Patrol routes** – To better target resources, to improve coverage throughout the county, enhance road safety, work with schools, the police, parish, town and district councils, residents' groups and traders' associations.
- **Special events** – During special events such as the Cheltenham races, the Jazz festival, international air tattoo and Gloucestershire rugby matches,
- **Administrative Process** – The notice processing function in respect of Penalty Charge Notices (PCN's); the parking team provide guidance and recommendations regarding all correspondence and customer contact to enable timely and effective responses in order to meet compliance through each stage of the process and to improve the experience for those in receipt of a PCN.

6. Enforcement

Enforcement of parking continues to improve compliance with parking restrictions throughout the County.

Gloucestershire County Council works closely with several stakeholders to deliver the management and enforcement of parking across the county.

All Services and enforcement remain the sole responsibility of Gloucestershire County Council and is delivered with the close supervision and management of county officers.

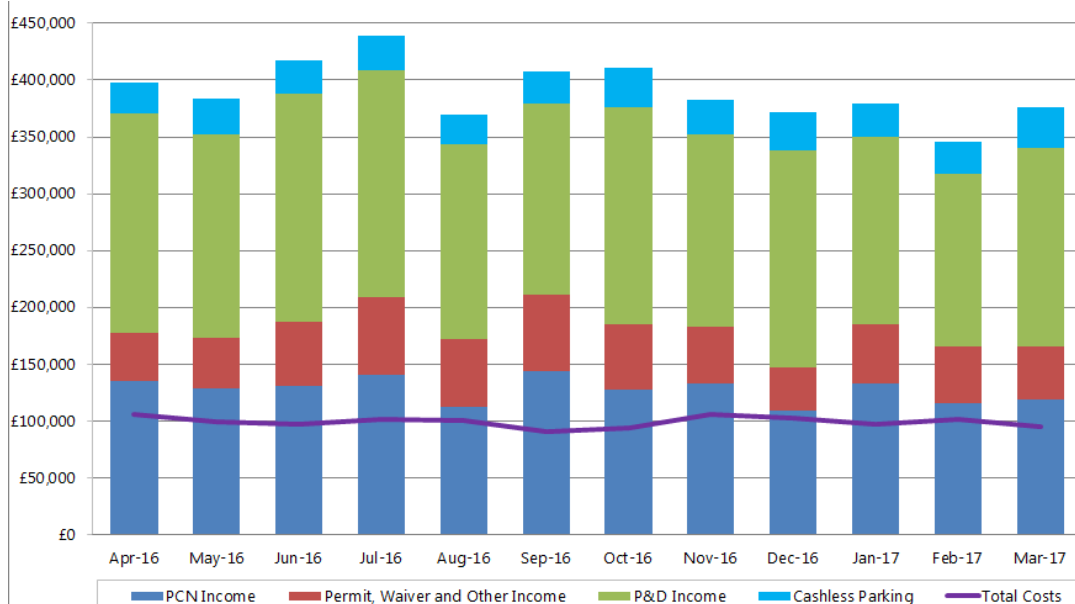
All Representations in respect of Penalty Charge Notices are considered by GCC officers.

7. On-street parking

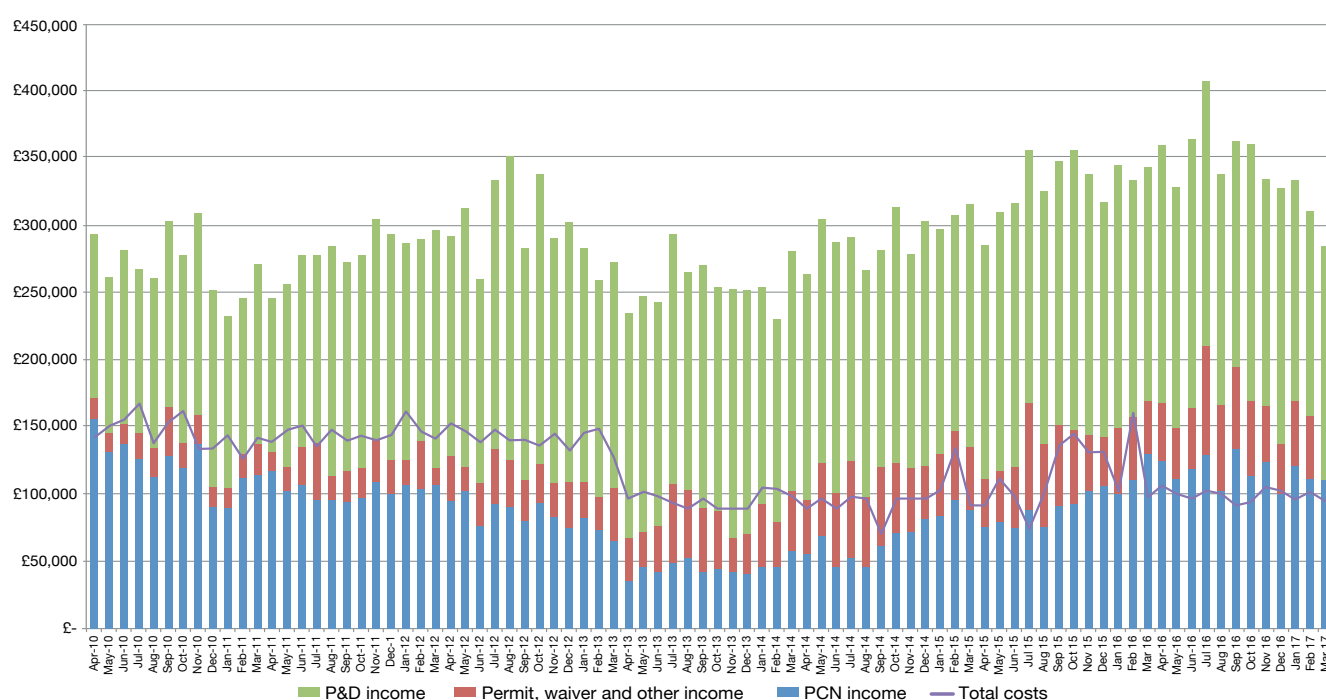
Income and costs

The key financial trends in on-street parking enforcement in 2016 and 2017 are demonstrated in the graph two below.

[Figure 6] County wide costs against various income - Graph One



[Figure 7] County wide costs against various income – Graph Two



This year, for the first time income from Penalty Charge Notices and permits combined have occasionally exceeded the total enforcement costs. Any surplus income is reinvested in firstly the management of parking and parking assets and secondly the highways network in the county, in accordance with legislation.



Bad parking affects everyone

8. PCN issue and payment by district

The chart below shows the number of Penalty Charge Notices (PCNs) issued in each district by month. Most PCNs are issued

in Cheltenham and Gloucester, where there are many more parking restrictions to enforce than other towns in the county.

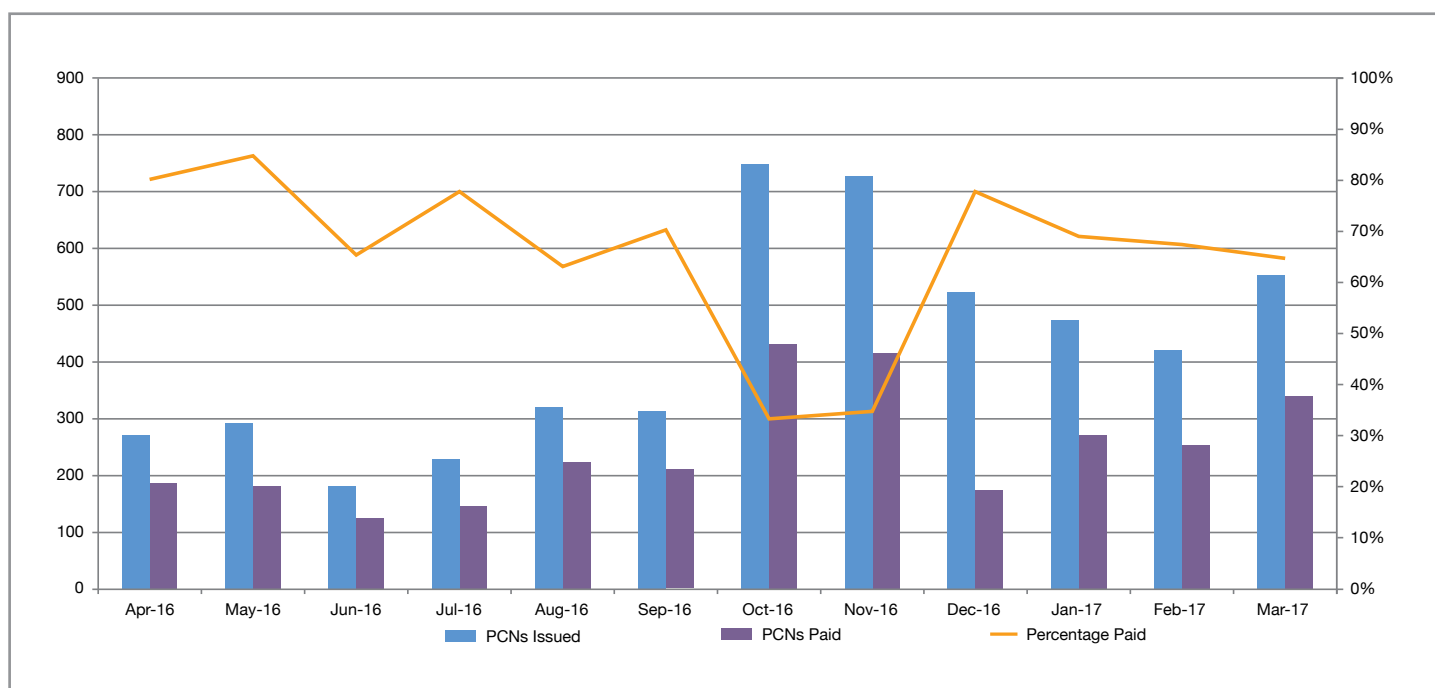
[Figure 8]
Cheltenham



2016/2017	Apr-16	May-16	Jun-16	Jul-16	Aug-16	Sep-16	Oct-16	Nov-16	Dec-16	Jan-17	Feb-17	Mar-17
PCNs Issued	1,921	1,750	1,297	1,624	1,391	1,142	1,273	1,588	1,510	1,410	1,402	1,423
PCNs Paid	1,176	1,046	727	988	885	685	692	890	775	838	802	763
PCNs Paid (full rate)	67.88%	59.89%	53.82%	62.99%	62.11%	64.19%	60.88%	62.47%	63.18%	61.28%	61.55%	59.59%

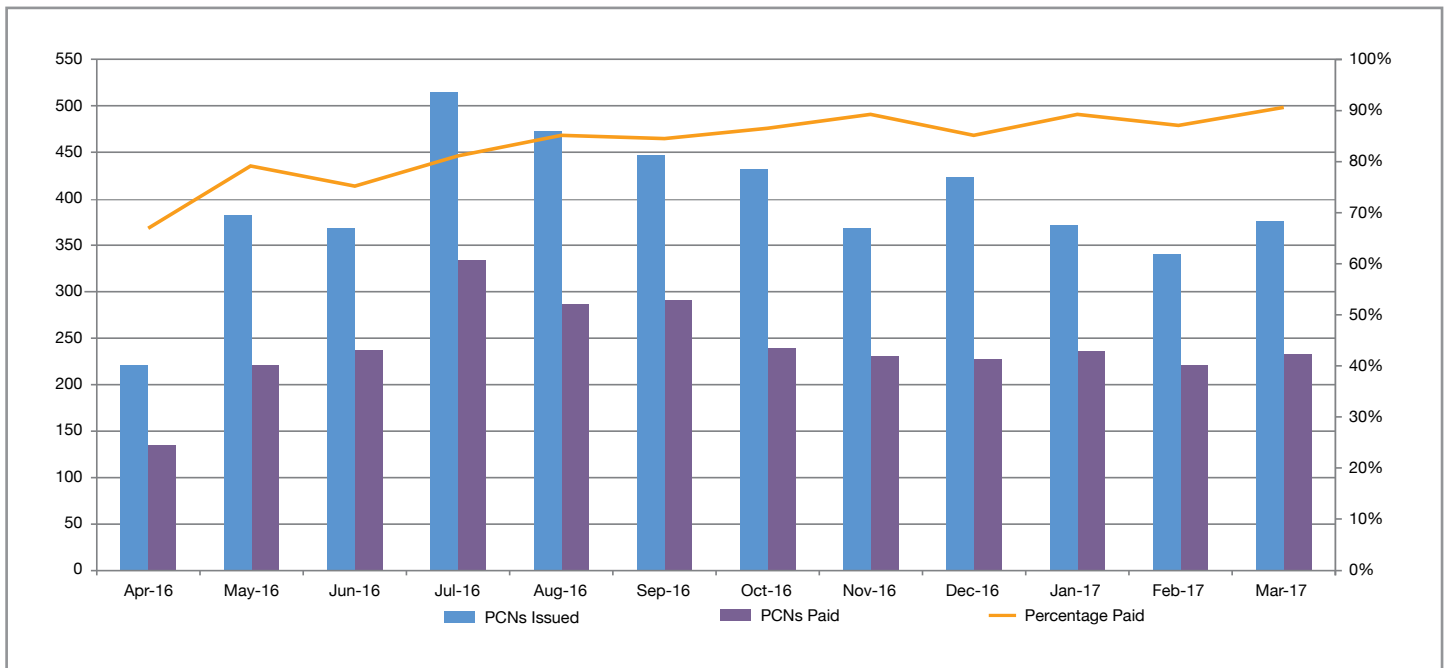


[Figure 9]
Cotswolds



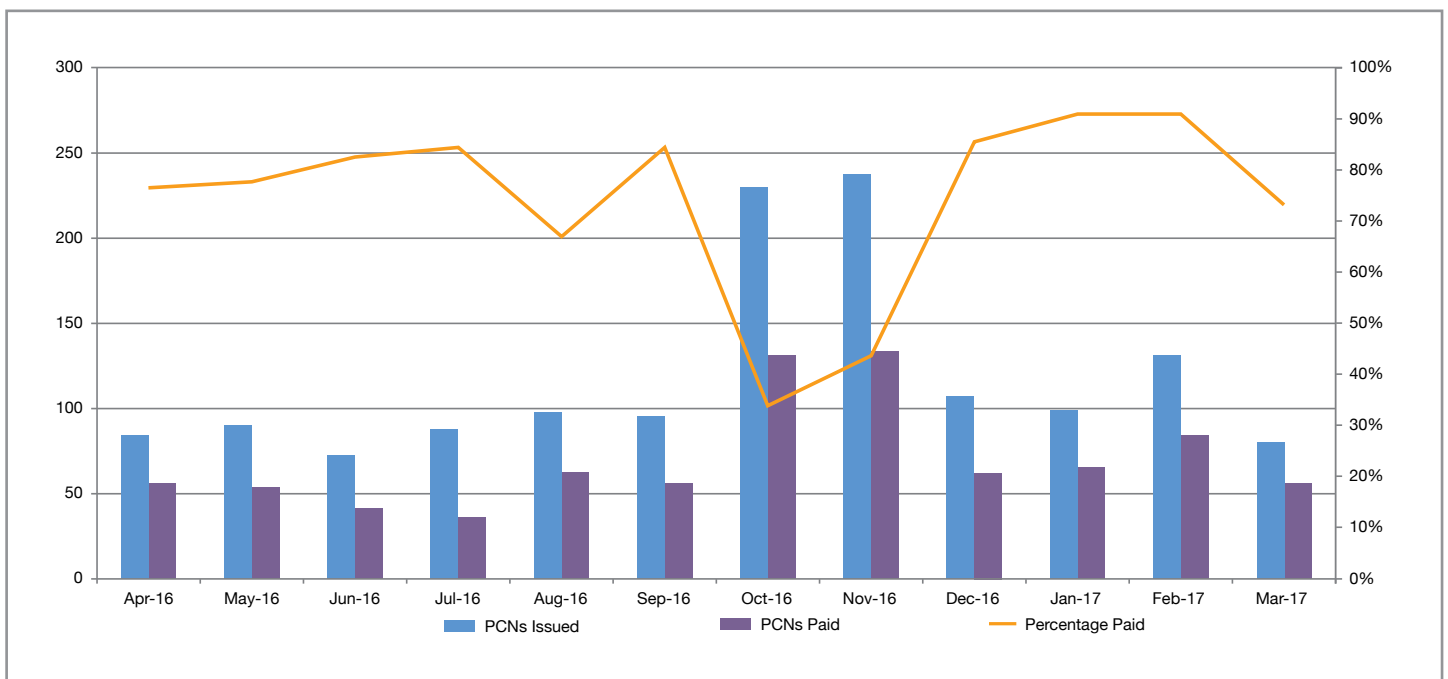
2016/2017	Apr-16	May-16	Jun-16	Jul-16	Aug-16	Sep-16	Oct-16	Nov-16	Dec-16	Jan-17	Feb-17	Mar-17
PCNs Issued	272	298	180	231	317	310	748	250	417	330	278	362
PCNs Paid	192	190	126	142	222	205	427	412	177	272	250	345
PCNs Paid (full rate)	80.15%	85.57%	65.56%	78.35%	63.72%	70.65%	33.02%	34.53%	79.13%	69.77%	67.15%	65.58%

[Figure 10] Stroud



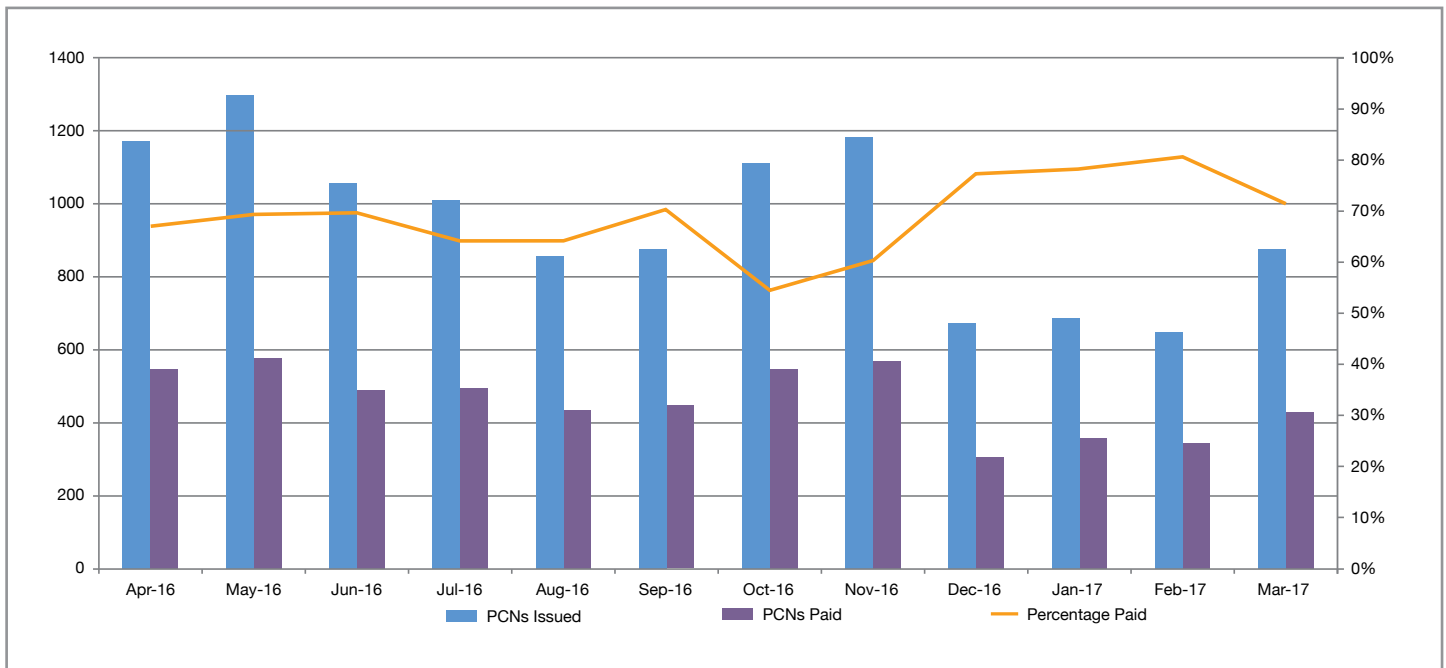
2016/2017	Apr-16	May-16	Jun-16	Jul-16	Aug-16	Sep-16	Oct-16	Nov-16	Dec-16	Jan-17	Feb-17	Mar-17
PCNs Issued	218	386	363	514	470	449	436	365	422	370	341	374
PCNs Paid	137	221	240	338	288	292	239	232	231	238	220	233
PCNs Paid (full rate)	67.43%	79.27%	75.21%	81.13%	85.32%	85.30%	87.84%	89.59%	85.31%	89.73%	87.10%	90.64%

[Figure 11] Tewkesbury



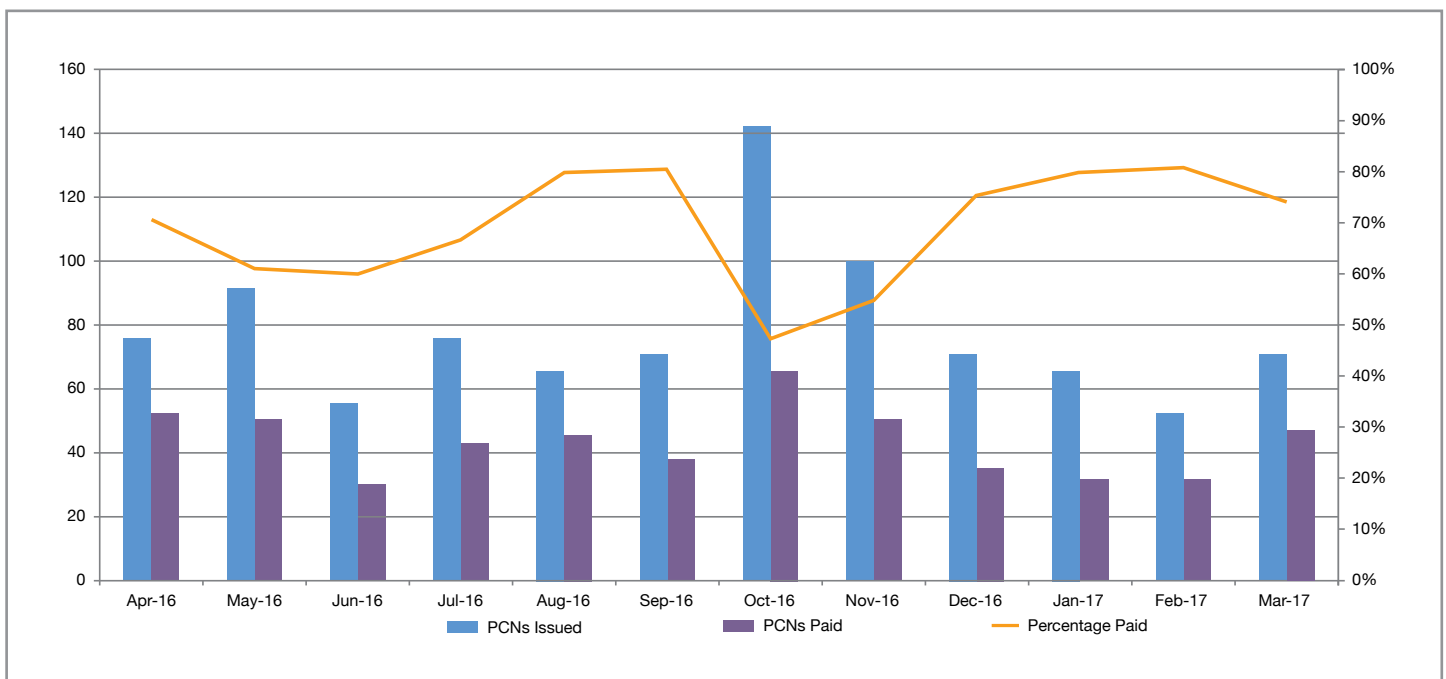
2016/2017	Apr-16	May-16	Jun-16	Jul-16	Aug-16	Sep-16	Oct-16	Nov-16	Dec-16	Jan-17	Feb-17	Mar-17
PCNs Issued	83	92	74	86	98	97	236	241	107	99	130	78
PCNs Paid	55	53	43	38	62	55	131	132	62	65	85	55
PCNs Paid (full rate)	77.11%	78.26%	82.43%	84.88%	67.35%	%	34.32%	43.57%	85.05%	90.91%	%	%

[Figure 12] Gloucester



2016/2017	Apr-16	May-16	Jun-16	Jul-16	Aug-16	Sep-16	Oct-16	Nov-16	Dec-16	Jan-17	Feb-17	Mar-17
PCNs Issued	1,183	1,298	1,049	1,003	859	876	1,111	1,194	675	684	655	873
PCNs Paid	551	582	501	503	429	435	557	572	302	364	341	425
PCNs Paid (full rate)	67.37%	69.41%	69.59%	64.51%	64.84%	70.32%	57.70%	60.39%	76.89%	77.19%	80.76%	72.97%

[Figure 13] Forest of Dean



2016/2017	Apr-16	May-16	Jun-16	Jul-16	Aug-16	Sep-16	Oct-16	Nov-16	Dec-16	Jan-17	Feb-17	Mar-17
PCNs Issued	76	92	55	76	65	71	142	100	70	65	53	70
PCNs Paid	53	52	30	43	46	38	65	50	36	31	31	47
PCNs Paid (full rate)	71.05%	61.96%	60.00%	67.11%	80.00%	80.28%	47.18%	55.00%	75.71%	80.00%	81.13%	74.29%

Figures correct as of June 2017

9. CCTV Bus Lane Enforcement

During September 2013 the County Council took over direct management and enforcement of all bus lanes across the county.

To assist with its parking enforcement objectives, the council utilises a network of unattended CCTV cameras to improve road safety and to help prioritise the movement of local buses and reduce trip times, while enabling the county to enforce effectively and efficiently. At present, five cameras are active in the county with further sites being considered.

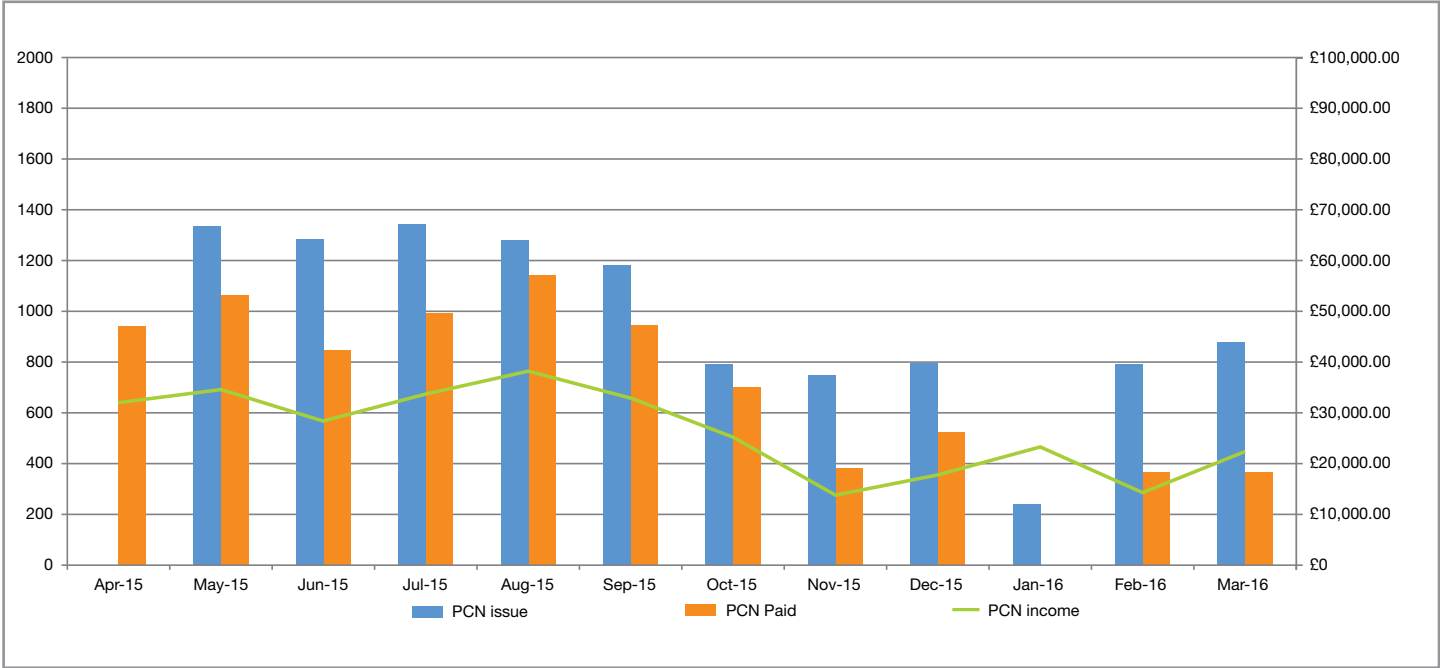
Working in partnership with developers and bus companies, the cameras are located on bus

gates (short bus only lanes) and bus lanes throughout the county.

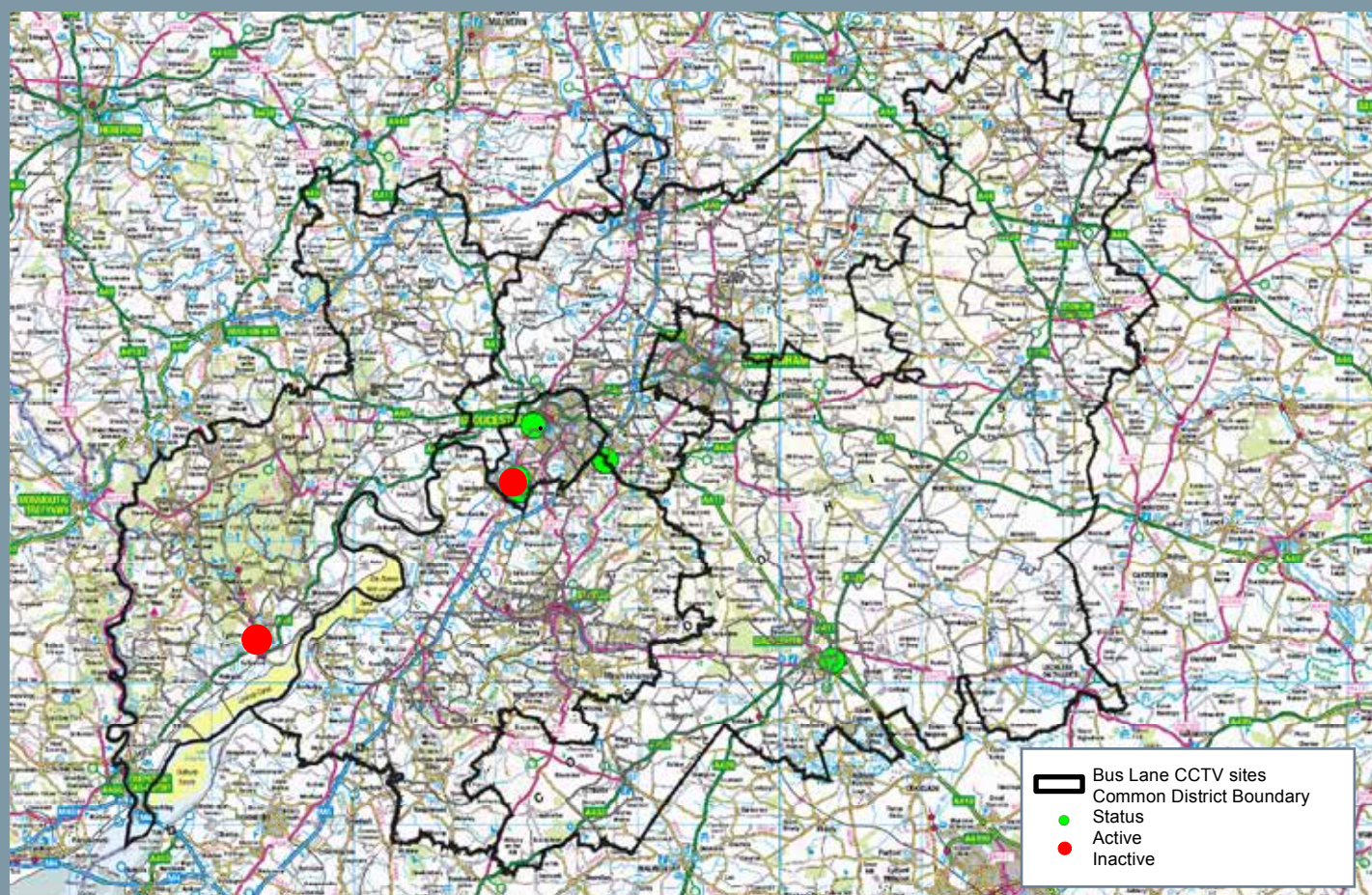
The equipment used is the Road Flow system, supplied by Systems Engineering & Assessment Ltd and is fully integrated into our parking software – Chipside. This enables seamless processing of contraventions by capturing quality evidence. All the active cameras were recently updated with 3G technology enabling improved remote access to data.

Figure 15 shows both established and new CCTV sites in Gloucestershire.

[Figure 14] Bus Lane CCTV Enforcement Activity 2015-2016



[Figure 15] Bus Lane CCTV Sites in Gloucestershire

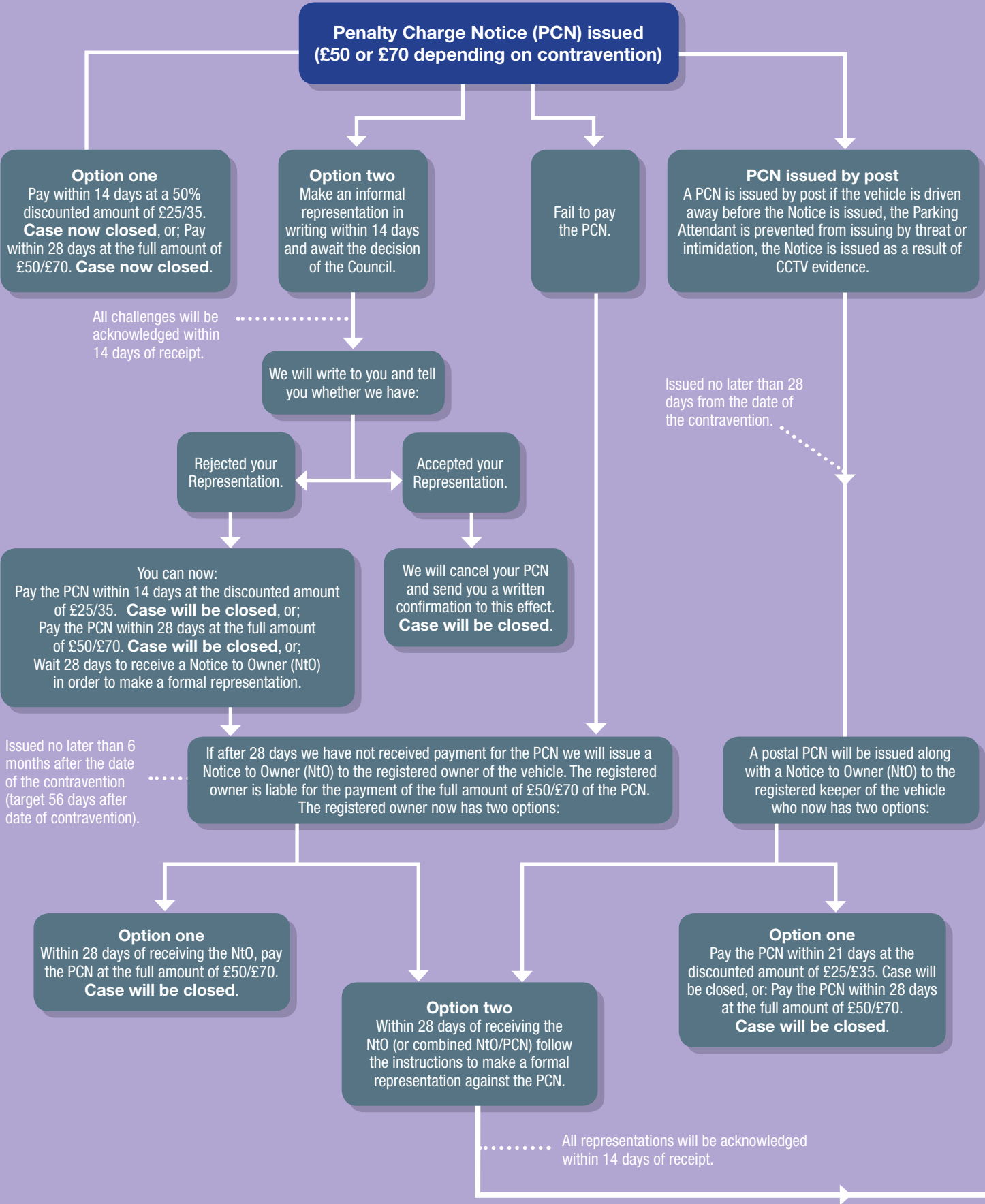


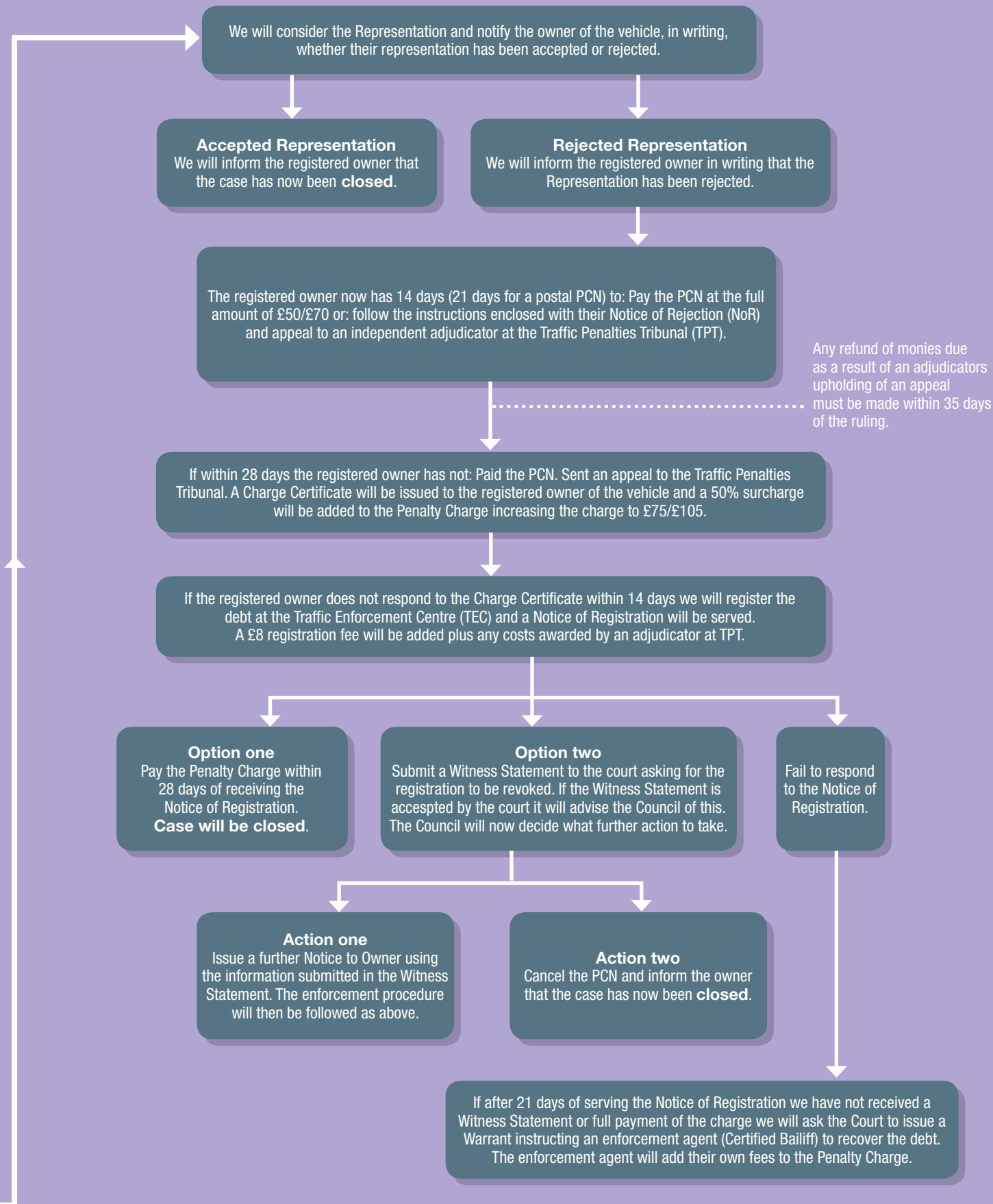
Map reproduced from Ordnance Survey material with the permission of Ordnance Survey on behalf of the Controller of Her Majesty's Stationery Office © Crown Copyright. Unauthorised reproduction infringes Crown Copyright and may lead to prosecution or civil proceedings. Gloucestershire County Council 100019134 2015.

10. PCN

The flow chart below illustrates the potential “life cycle” of a PCN with the opportunities to challenge and pay.

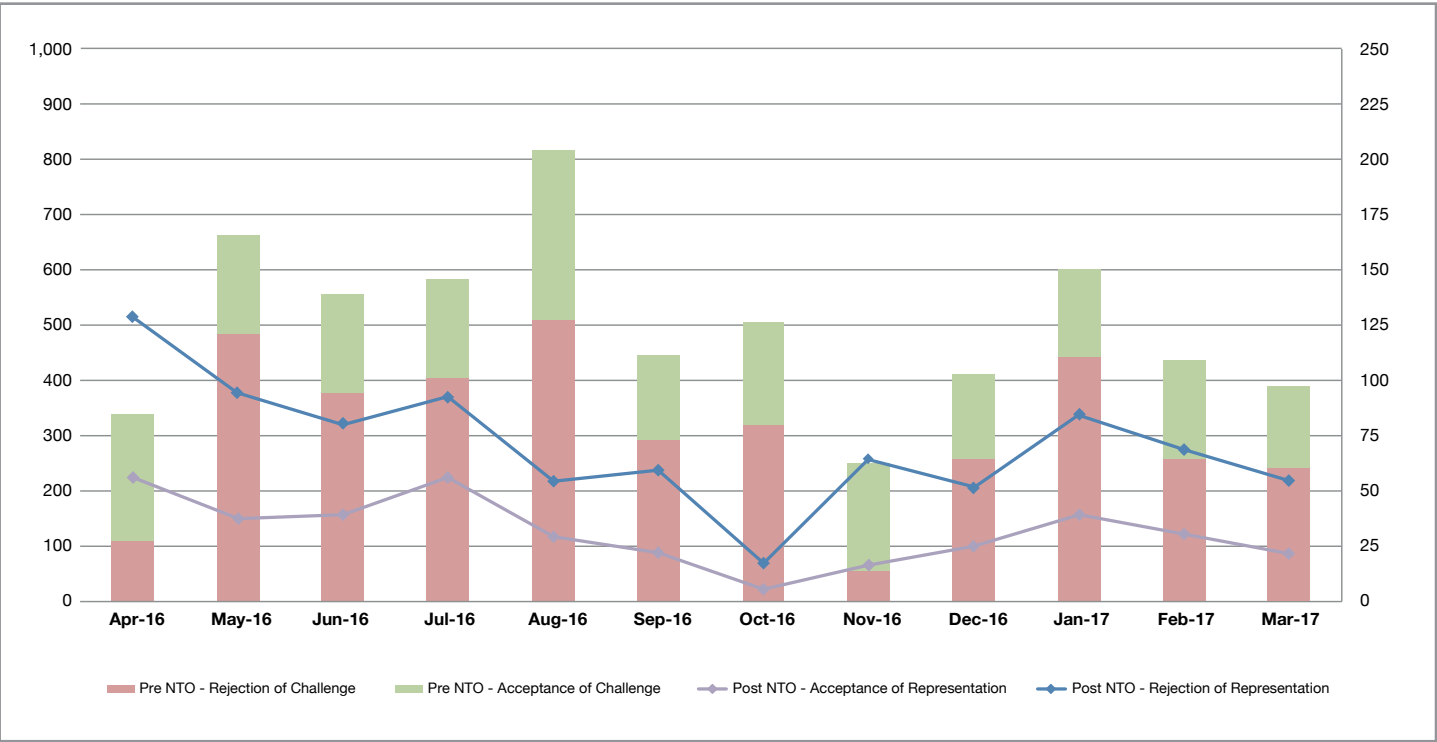
[Figure 16] PCN Life Cycle



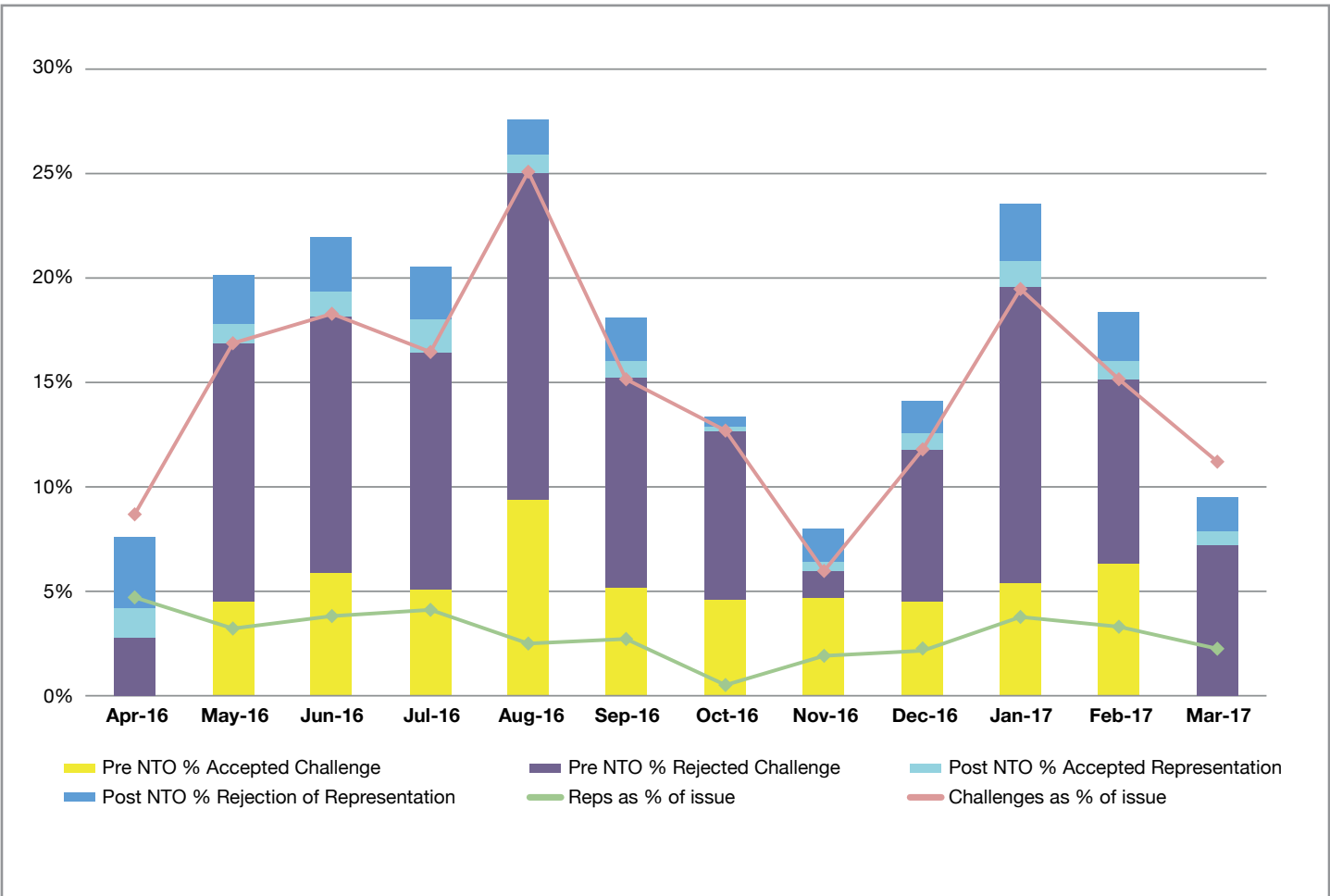


11. Challenges and Representations

[Figure 16] Challenges and Representation per issue



[Figure 17] Challenges and Representations as % of issue



[Figure 18] Challenges and Representations (on street and CCTV PCN's)

Appeals and Challenge	Yearly Total Figures	Challenge and Representation % of total PCN issued
Rejection Pre Notice to Owner (NTO)	4,514	12.06%
Acceptance Pre NTO	2,846	7.61%
Post NTO Rejection of rep	1,181	3.16%
Post NTO Acceptance of rep	617	1.65%
Total PCN Issued	37,418	

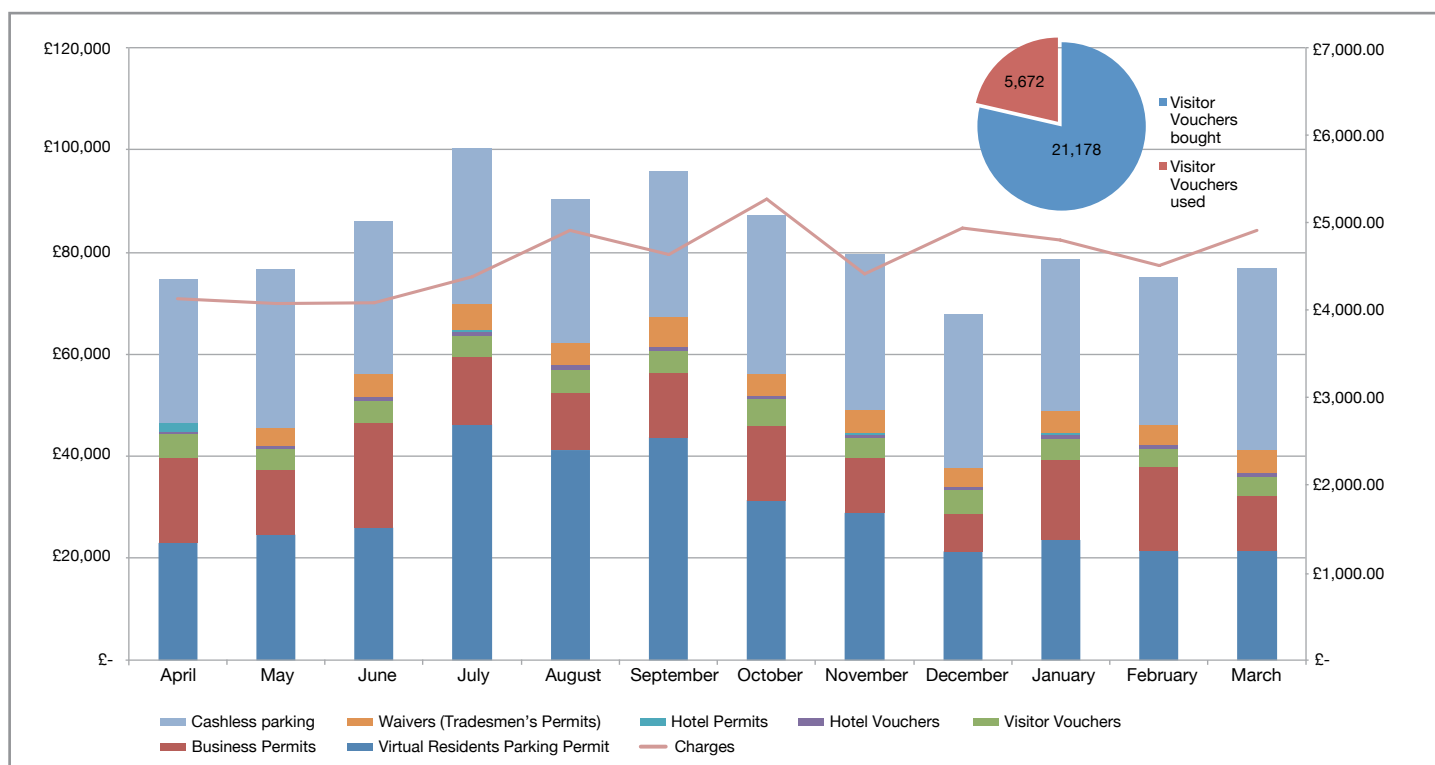
This is the first year we have collated these figures and we are constantly monitoring them to highlight any particular issues and to improve our performance.

12. Permit, Waiver and other income

[Figure 19] Resident permit prices

Permit type	Cost
1st Permit	£50 per year or £4.17 monthly
2nd Permit	£100 per year or £8.34 monthly
Visitor Voucher (1 full calendar day)	£10 per set of 10 (£1 per voucher) 50 per household per year. Only one voucher required for a weekend (Saturday and Sunday)
'Eco' cars (Vehicle Excise Duty Band 'A') You can view a list of VED Band A cars here <i>To purchase a reduced charge permit you will need to contact MiPermit on 0333 123 5900</i>	1st Permit – Free (£0) It is still necessary to obtain a permit (even though it is free of charge) 2nd Permit – £50 per year or £4.17 monthly
Motorcycles under 300cc (reduced charge) (Motorcycles over 300cc require a normal residents permit) <i>To purchase a reduced charge permit you will need to contact MiPermit on 0333 123 5900</i>	1st Permit – £25 2nd Permit – £50 per year or £4.17 monthly

[Figure 20] Permit, waiver and other income



[Figure 21] **Actions and finance**

Actions	Virtual Residents Parking Permit	Business Permits	Visitor Vouchers	Hotel Vouchers	Hotel Permits	Waivers (Tradesmen's permits)	Cashless Parking	P&D Transactions
April	1,582	44	8,075	18	26	0	23,359	78,158
May	1,610	46	77	77	0	3,935	26,052	75,843
June	1,576	74	83	83	0	3,562	25,003	72,638
July	2,115	55	99	93	6	3,883	26,582	73,987
August	1,977	38	91	91	0	4,097	22,557	69,237
September	2,092	44	78	77	1	3,536	24,393	63,818
October	1,956	60	39	39	0	4,066	28,998	66,235
November	1,835	42	4	57	4	8,036	25,823	58,038
December	1,711	30	1	76	1	0	28,298	61,857
January	1,869	48	63	18	26	3,652	25,298	57,443
February	1,728	62	0	18	26	3,464	24,541	55,595
March	1,949	42	0	18	26	4,083	30,444	73,179
Year total	22,000	585	8,610	665	116	42,314	311,348	806,028

Finance	Virtual Residents Parking Permit	Business Permits	Visitor Vouchers	Hotel Vouchers	Hotel Permits	Waivers (Tradesmen's permits)	Cashless Parking	Charges
April	£21,272.10	£17,387.00	£4,180.00	£112.00	£2,310.00	£-	£27,461.20	£4,236.00
May	£24,662.01	£12,350.00	£4,020.00	£250.00	£-	£3,790.00	£31,004.00	£4,145.00
June	£26,584.97	£20,118.00	£4,050.00	£288.00	£-	£4,955.00	£29,516.90	£4,195.00
July	£46,147.73	£13,724.00	£4,230.00	£354.00	£90.00	£5,025.00	£30,922.40	£4,377.00
August	£40,016.61	£10,230.00	£4,650.00	£404.00	£-	£4,840.00	£25,735.00	£4,852.00
September	£43,885.26	£12,565.00	£4,520.00	£328.00	£95.00	£6,085.00	£28,257.40	£4,634.00
October	£33,636.69	£14,410.00	£5,190.00	£180.00	£-	£4,930.00	£34,532.00	£5,250.00
November	£28,443.55	£12,065.00	£4,350.00	£274.00	£60.00	£4,930.00	£30,455.90	£4,487.00
December	£21,389.50	£7,995.00	£4,790.00	£326.00	£15.00	£3,035.00	£33,939.44	£4,923.00
January	£26,201.87	£16,565.00	£4,660.00	£855.00	£270.00	£4,305.00	£29,394.37	£4,795.00
February	£23,201.87	£16,960.00	£3,740.00	£1,622.00	£-	£3,580.00	£28,103.74	£4,551.00
March	£25,727.14	£11,490.00	£4,480.00	£812.00	£-	£4,030.00	£35,342.14	£4,836.00
Year total	£361,602.55	£165,859.00	£52,860.00	£5,805.00	£2,840.00	£49,505.00	£364,664.49	£55,281.00

We are looking to increase our count of cashless parking transactions. As of the last financial year, cashless parking transactions accounted for 20% of all parking transactions.



To purchase permits, waivers or visitor vouchers

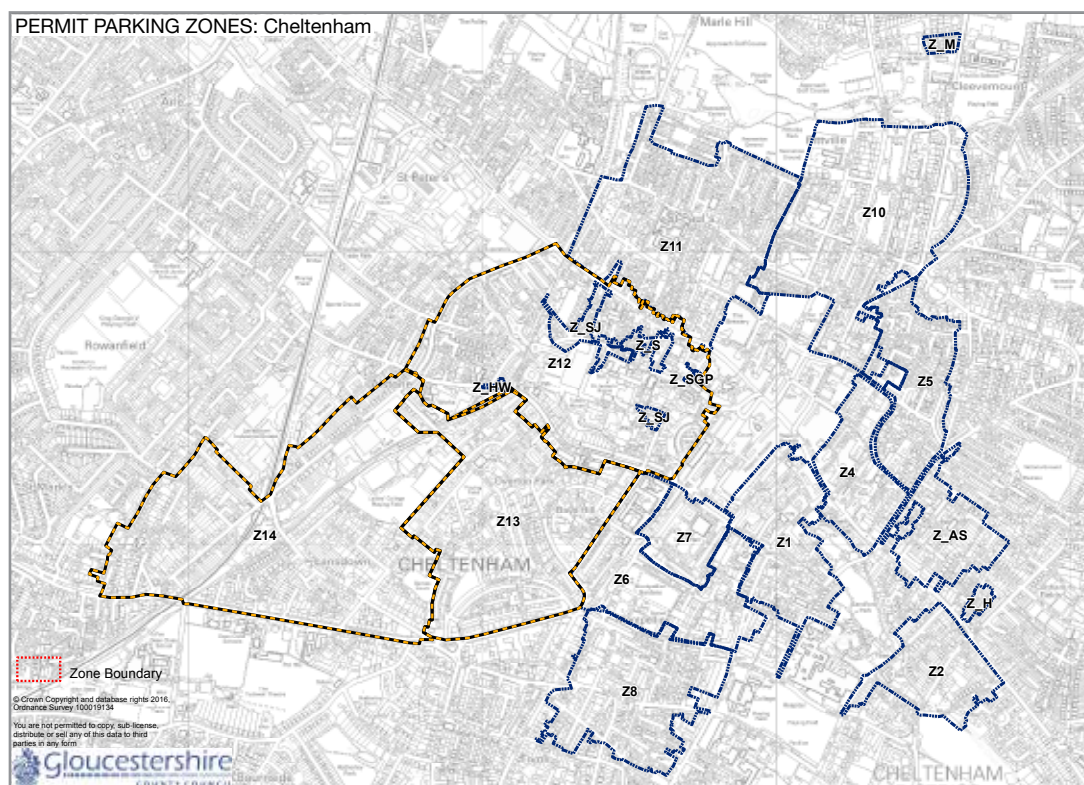
Please contact MIPermit:

<https://secure.mipermit.com/gloucestershire>

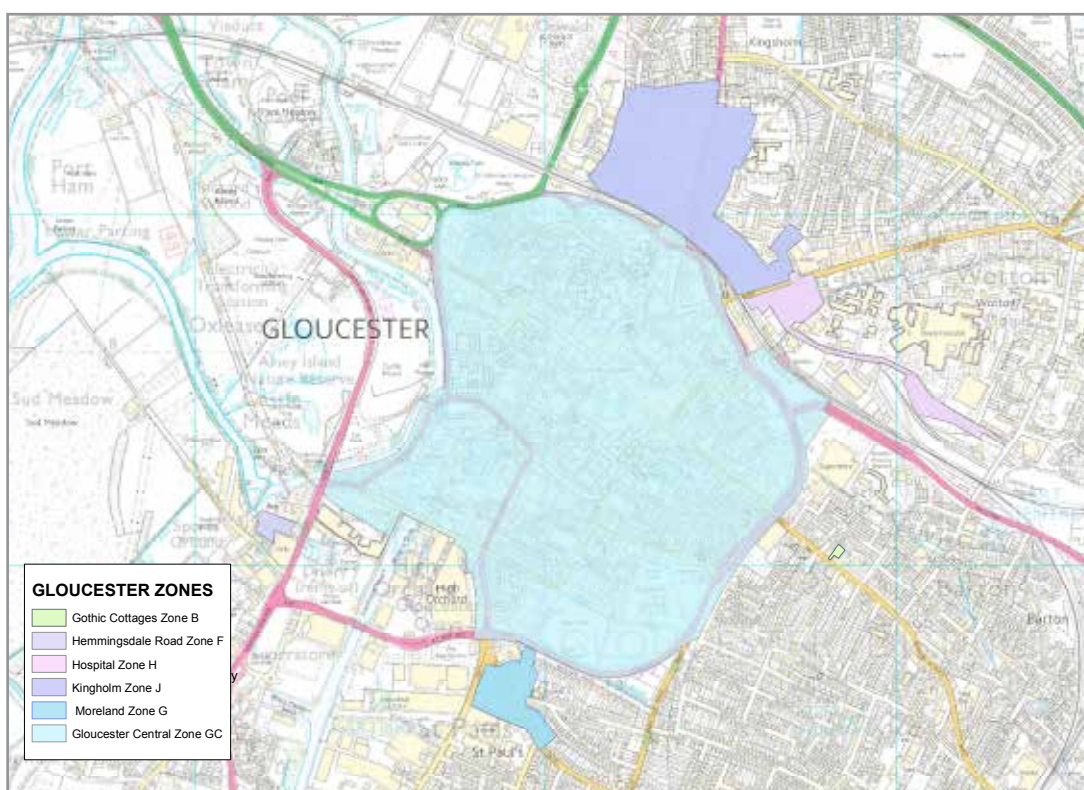
Phone number 0333 123 5900

Further information on permits, waivers and visitor vouchers is available on our Website.

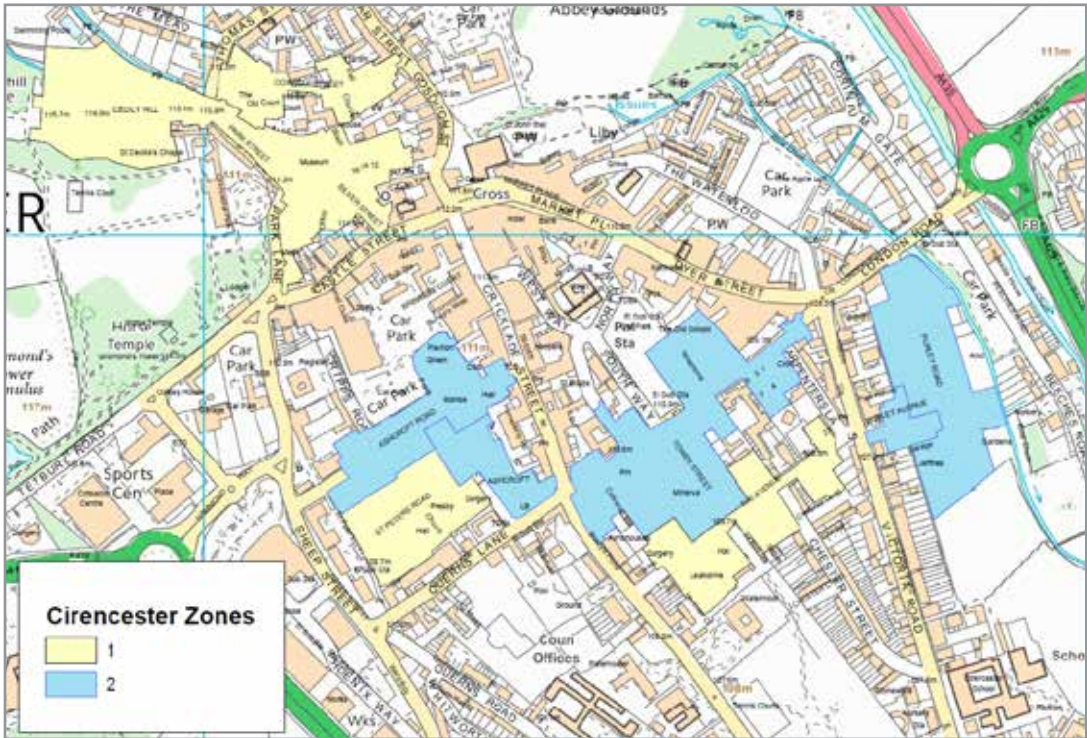
[Figure 22]
Cheltenham Zones



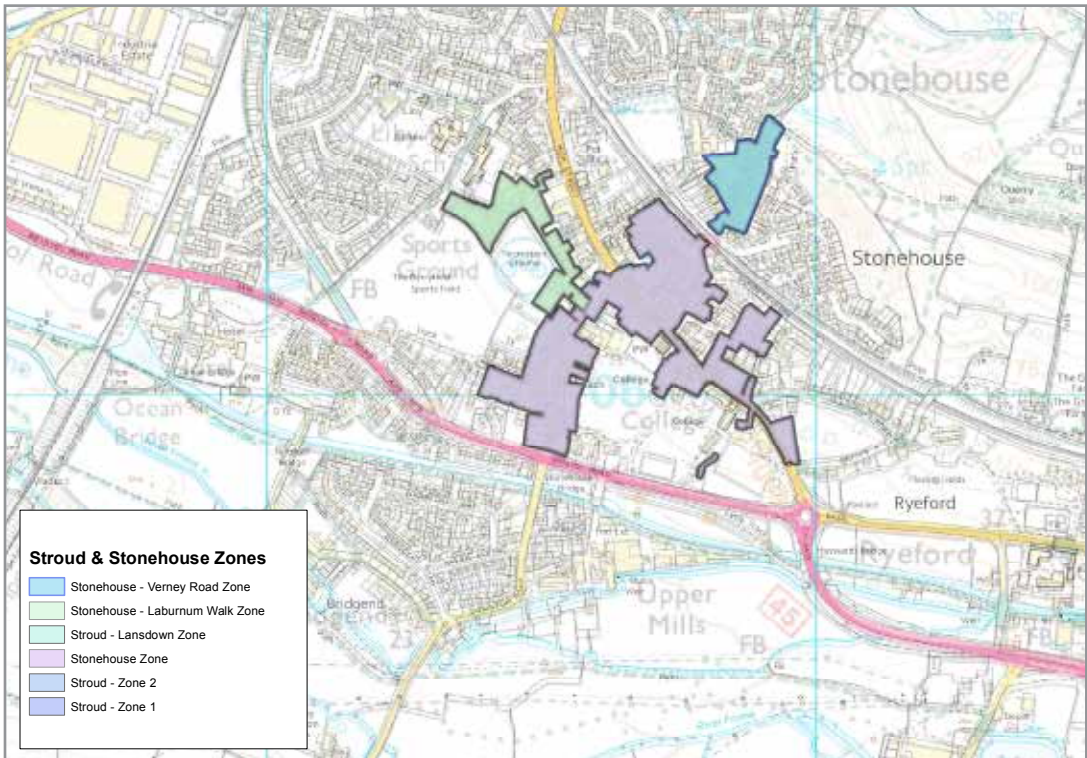
[Figure 23]
Gloucester Zones



[Figure 24]
Cirencester Zones



[Figure 25]
Stroud and Stonehouse Zones



9. Park & Ride Report (Feb 2015 to March 2016)

There are three major Park & Ride schemes now operating within Gloucestershire. Gloucester continues to be served by the Waterwells Park & Ride, based in Quedgeley, while The Racecourse and Arle Court schemes serve Cheltenham.

Apart from reducing levels of congestion the aim of any Council should be to encourage growth of commercially operated Park & Ride schemes. All three aforementioned Park & Ride schemes now operate on a commercial basis without GCC subsidy. In the case of Waterwells and Arle Court however the Council continues to maintain both car parks and as such, works to improve customer experience and safety continue to be made.

Cheltenham Park & Ride Schemes

Arle Court Park & Ride – Service 511



Cheltenham
Arle Court
Park & Ride
site

Location: Cheltenham, Grovefield Way, GL51 6SH

Bus Service Provider: Bennetts Coaches

Bus Service Frequency: Every 12 minutes
Monday to Saturday.

Number of car parking spaces: 534 (including
154 spaces created through expansion)

Parking tariff: Free parking for customer use only.

Facilities: None

Level of county council involvement: Car park is
leased by GCC. Bus service is operated under contract
to GCC however without subsidy and revenue is
retained by the operator.

How much does it cost?

Concessionary pass holder (after 0930 weekdays,
all day weekends): 50p (single), £1.00 (return)

Child single (under 16): £1.50

Child return (under 16): £2.00

Adult single: £2.50

Adult return: £3.50

Group 2: £4.50

Group 3: £5.50

Group 4: £6.50

Group 5: £7.50

Only one ticket is issued to the £3.50 fare payer.

Accompanying passengers must return with the ticket
holder or will be charged a full single fare.

Adult Weekly: £14. 1 week unlimited travel valid from
date of issue until expiry date.

Adult Monthly: £55

Concessionary English passes are accepted subject
to local conditions.

Up to 2 children (under the age of 16) travel free when
accompanied by a fare paying adult.

If you have any questions or concerns relating to
Park & Ride provision, please contact the Integrated
Transport unit at itu@gloucestershire.gov.uk



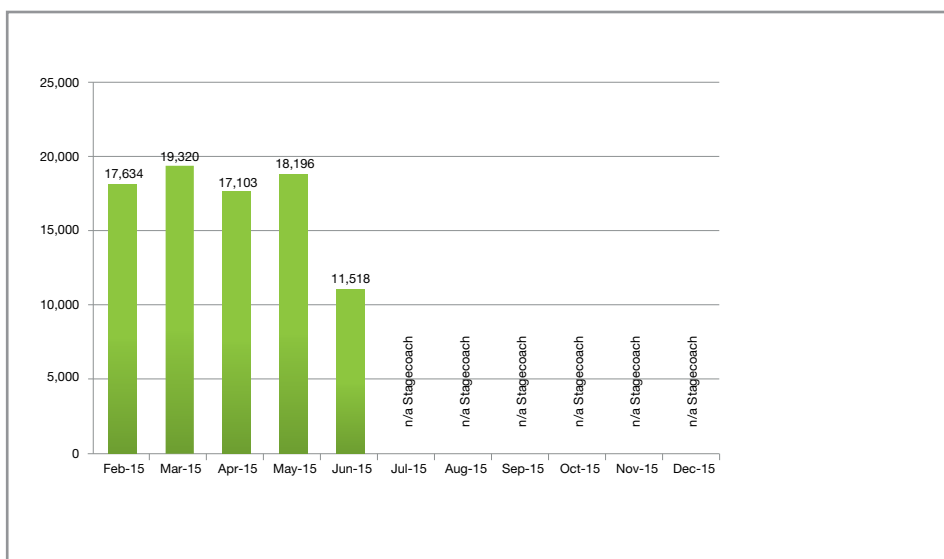


**Park & Ride performance charts
for Gloucester (Waterwells)
and Cheltenham (Arle Court)
February 2015 until March 2016**

Number of single journeys taken
per month

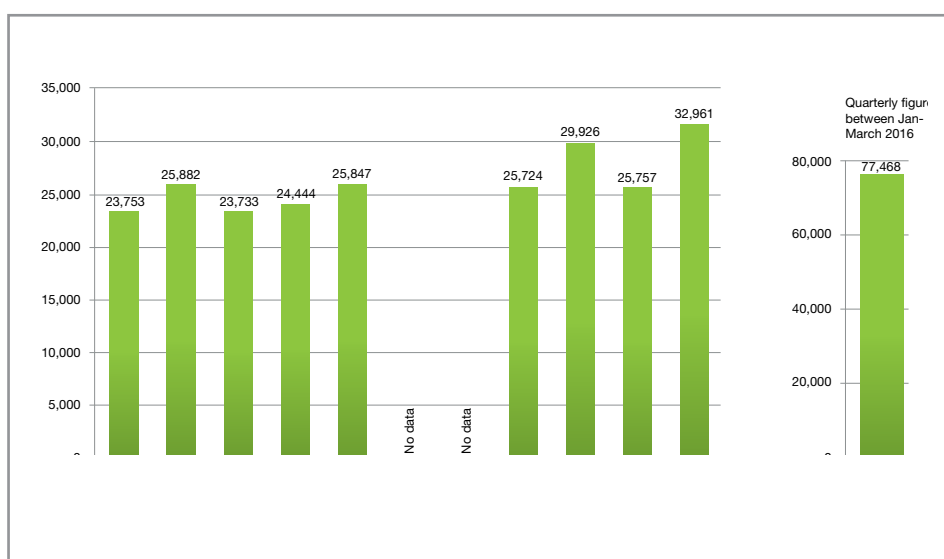
[Figure 26]

**Gloucester Service 507
Bennetts Park & Ride (July
handover to commercial bus
operator)**



[Figure 27]

**Cheltenham Service 511 Arle
Court Park & Ride**





Contact: Parking Team
Gloucestershire County Council
Shire Hall
Gloucester
GL1 2TG
t: 0800 514 514
e: parking@gloucestershire.gov.uk

www.gloucestershire.gov.uk



Gloucestershire
COUNTY COUNCIL