

A435 Cheltenham to Bishop's Cleeve Cycleway: Section 2 Phase 1

Progress update 1

Montel Civil Engineering has been appointed by Gloucestershire County Council as the main contractor to complete Section 2 Phase 1 of the A435 Cheltenham to Bishop's Cleeve Cycleway. This phase, from Gloucestershire and Warwickshire Steam Railway (GWSR) bridge to Bishop's Cleeve Roundabout and Wellington Road to Centre Cross Drive commenced on Monday 6th January, with an anticipated completion by end of Autumn 2025.

A435 Evesham Road / Wellington Road junction progress

We'd like to thank the local community for their patience and cooperation during recent overnight works, which allowed us to progress with the scheme.

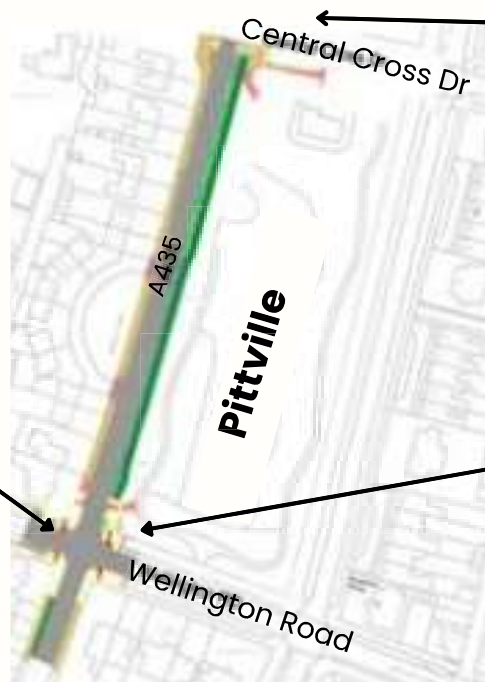
On the night of 13th January, we successfully installed a temporary mini-roundabout. This will remain in place for approximately four months to support junction improvements, including a new traffic signal system with push-button crossings for pedestrians and cyclists.

In response to feedback from pedestrians about difficulties crossing the junction, we have made improvements by implementing barriers and a pedestrian diversion route to guide pedestrians to safer crossing points further from the junction.

During the remaining night works, we installed traffic signal ducting in the carriageway and removed the old traffic signal poles.



In the next four weeks we will commence works on the north west corner of the junction, installing underground apparatus for utilities.



The temporary site compound has been set up on Central Cross Drive

We have begun site clearance on the north-east corner in preparation for cycleway construction. In the next 4 weeks, we will be installing underground apparatus for traffic signals and installing kerbs for new pedestrian crossing points.

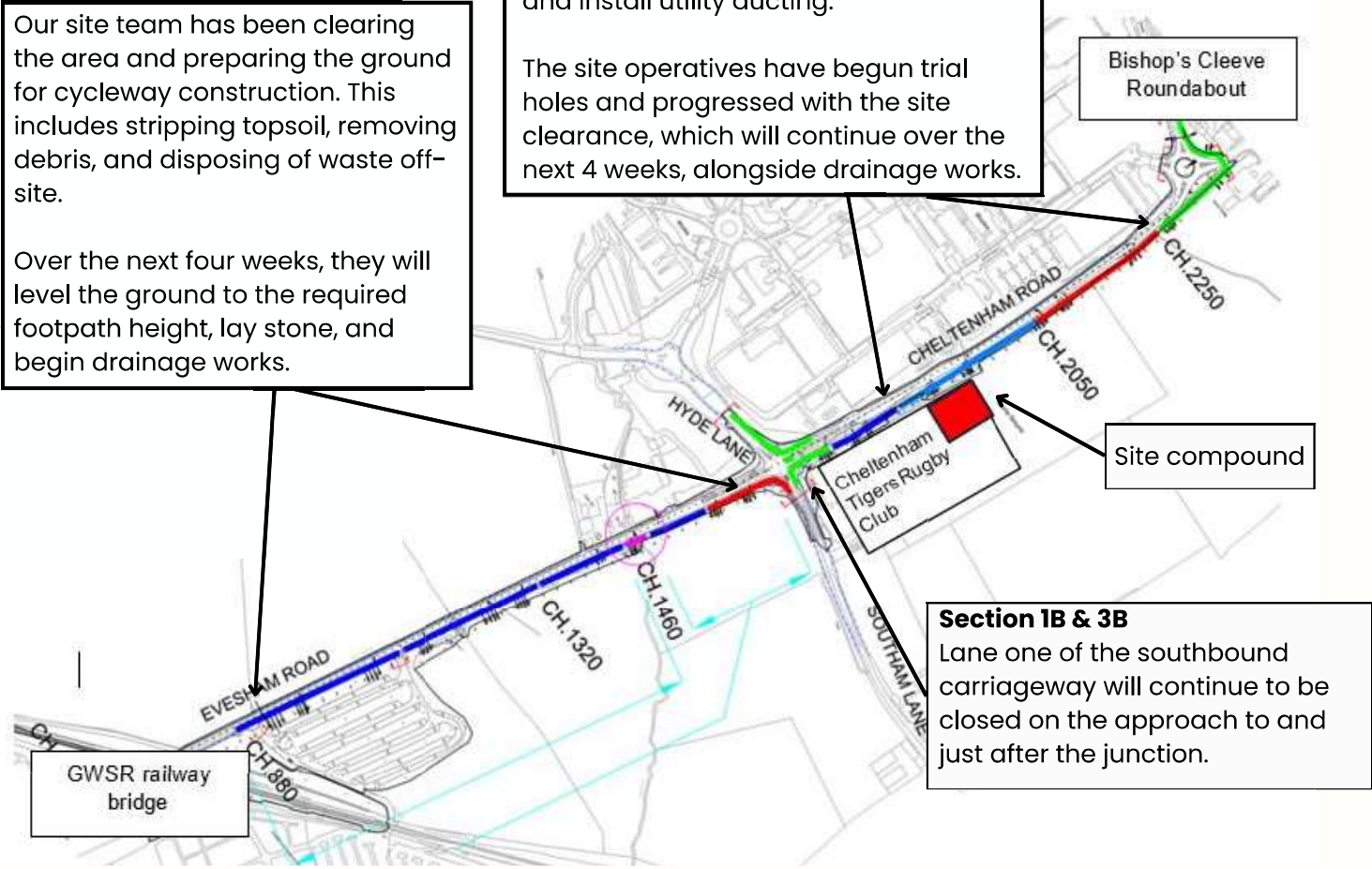
A435 Evesham Road (GWSR bridge to Bishop's Cleeve roundabout) progress

Our site team has been clearing the area and preparing the ground for cycleway construction. This includes stripping topsoil, removing debris, and disposing of waste off-site.

Over the next four weeks, they will level the ground to the required footpath height, lay stone, and begin drainage works.

The recent road closures and night works allowed us to remove the existing road markings, install new road marking and install utility ducting.

The site operatives have begun trial holes and progressed with the site clearance, which will continue over the next 4 weeks, alongside drainage works.



Site photos



Traffic management

Cones will remain in place along the kerb line, with most work carried out off-line in the verge for carriageway and cycleway construction. Temporary traffic signals will be used intermittently during for deliveries and kerb installation on the southbound carriageway.

From 24th to 26th February, temporary two-way traffic signals will be in place for three days during off-peak hours(9:30am–3:30pm) in areas between GWSR bridge and Cheltenham Racecourse roundabout for site clearance.

Please contact **Suzanne Wright** on **suzanne.wright@montel-group.com** if you have any specific queries or concerns or would like to be added to the mailing list.

You can also keep updated by visiting Gloucestershire County Council's webpage and social media pages: