

Unemployment Bulletin

Issue 76 November 2014

Contents

Part 1: Summary

A summary of unemployment data at district, County, regional and national level 1

Part 2: County

Unemployment figures for the County compared to the South West and the rest of the UK 3

Part 3: Districts

A comparative break down of unemployment figures by district 4

Part 4: Wards

Further breakdown of unemployment figures by ward:

Cheltenham	6
Cotswolds	8
Forest of Dean	10
Gloucester	12
Stroud	14
Tewkesbury	16

Part 5: Map

Distribution of claimant rate across Gloucestershire 18

Part 6: Youth Unemployment

Unemployment data for the 18-24 year old age group 20

Part 7: Young People

Data about Young People Not in Education, Employment or Training (NEET) 22

Please note: the ward and LSOA boundaries used in this report have been updated. This means figures for these areas are not comparable with those reported in previous bulletins.

INTRODUCTION

The Unemployment Bulletin provides a monthly update on unemployment data for Gloucestershire, the South West region and the United Kingdom. It is produced by the Strategic Needs Analysis Team in the County Council's Strategy and Challenge function. The data is sourced from the Office for National Statistics via Nomis (www.nomis.co.uk).

The claimant count measures the number of people claiming unemployment-related benefit (currently Job Seeker's allowance). The claimant rate is the number of claimants as a proportion of the working age population.

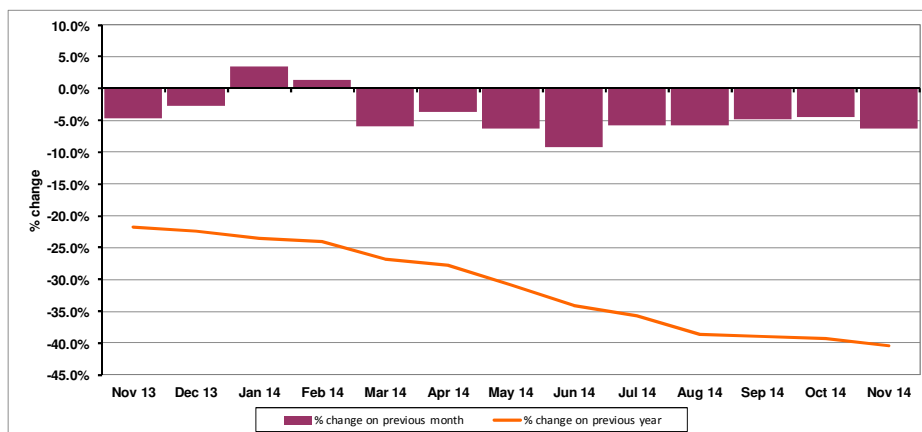
PART 1: SUMMARY

The claimant rate in Gloucestershire was 1.2% in November 2014. This was a 0.1% decrease on the October 2014 figure. The South West rate remained the same as the previous month at 1.3%, while the UK rate decreased to 2.1%. Gloucestershire's rate 0.1% lower than the South West average of 1.3%, and 0.9% lower than the UK average of 2.1%.

The claimant count in Gloucestershire in November 2014 decreased by 309 people. The amount of people claiming in November 2014 was 6.2% lower than the number in October 2014. This compares to a 2.5% decrease in the South West and a 4.5% decrease for the UK.

The year on year claimant count in Gloucestershire has decreased since last month. The count was 40.3% lower in November 2014 than at the same point in the previous year as shown in the graph below.

Gloucestershire claimants - Month on Month and Year on Year change: November 2013 to November 2014



Source: ONS Crown Copyright Reserved

Produced by:

Strategic Needs Analysis Team
Strategy and Challenge
Gloucestershire County Council
December 2014

DISTRICTS AT A GLANCE

At a glance unemployment information grouped by district. Includes:

Claim count: Total number of people claiming Job Seekers Allowance in November 2014

Compared to last month: How much larger/smaller November's claimant count is compared to October, expressed as a %

Claimant rate: The % of working population claiming Job Seekers Allowance in November 2014

Highest claiming ward: The ward with the highest claim count in that district and the rate

CHELTEMHAM BOROUGH

Claim count:	912
Compared to last month:	-6.3%
Claimant rate:	1.2%
Highest claiming ward	Oakley (2.3%)

GLOUCESTER CITY

Claim count:	1,685
Compared to last month:	-5.8%
Claimant rate:	2.1%
Highest claiming ward	Barton and Tredworth (4.8%)

COTSWOLD DISTRICT

Claim count:	328
Compared to last month:	-7.6%
Claimant rate:	0.7%
Highest claiming ward	Cirencester Watermoor (1.6%)

STROUD DISTRICT

Claim count:	593
Compared to last month:	-8.6%
Claimant rate:	0.9%
Highest claiming ward	Central (2.2%)

FOREST OF DEAN

Claim count:	634
Compared to last month:	-2.5%
Claimant rate:	1.3%
Highest claiming ward	Cinderford West (3.0%)

TEWKESBURY BOROUGH

Claim count:	526
Compared to last month:	-7.9%
Claimant rate:	1.0%
Highest claiming ward	Tewkesbury Prior's Park (3.2%)

YOUNG PEOPLE NOT IN EDUCATION, EMPLOYMENT OR TRAINING (NEET)

At the end of November 2014 there were 603 young people aged 16-18 not in education, employment or training in Gloucestershire and this figure translates into an adjusted (*) 16-18 NEET population of 3.98%.

PART 2: UK, SW AND GLOUCESTERSHIRE INDICATORS

The unemployment situation in Gloucestershire compared to the South West and the UK.

Claimant Rate

Figure 1: Claimant Rate for Gloucestershire, the South West and UK over the past year

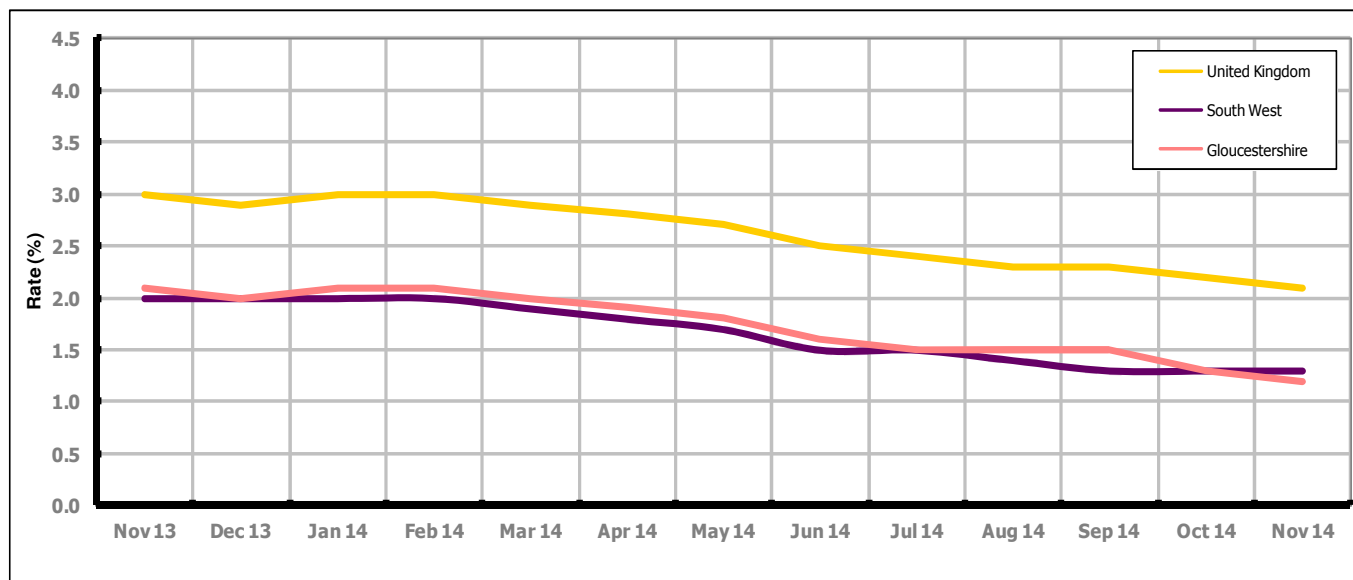


Figure 1 shows the claimant rate for Gloucestershire at 1.2% in November 2014. With the exception of July, October and November 2014, and December 2013, the rate has been slightly higher than the South West average. It has been persistently lower by approximately 0.9% against the UK average. The November 2014 rate represented a 0.1% decrease on October 2014.

Claimant Count

Table 1: Analysis of UK, South West and Gloucestershire Claimant Counts

Area	Claimant Count in November 2014	% change on October 2014	Average % change over the last six months	Consecutive months decreasing
UK	848,085	-4.5%	-3.0%	8
South West	42,058	-2.5%	-3.1%	8
Gloucestershire	4,678	-6.2%	-4.5%	8

Table 1 shows that in November 2014, the number of claimants in Gloucestershire was 6.2% lower than the number in October 2014.

The average change in claimants in Gloucestershire for the six months to November 2014 was -4.5%.

PART 3: LOCAL AUTHORITY DISTRICT ANALYSIS

Claimant Rate and Claimant Count

Figure 2: Claimant Rate (%) across Gloucestershire - November 2014

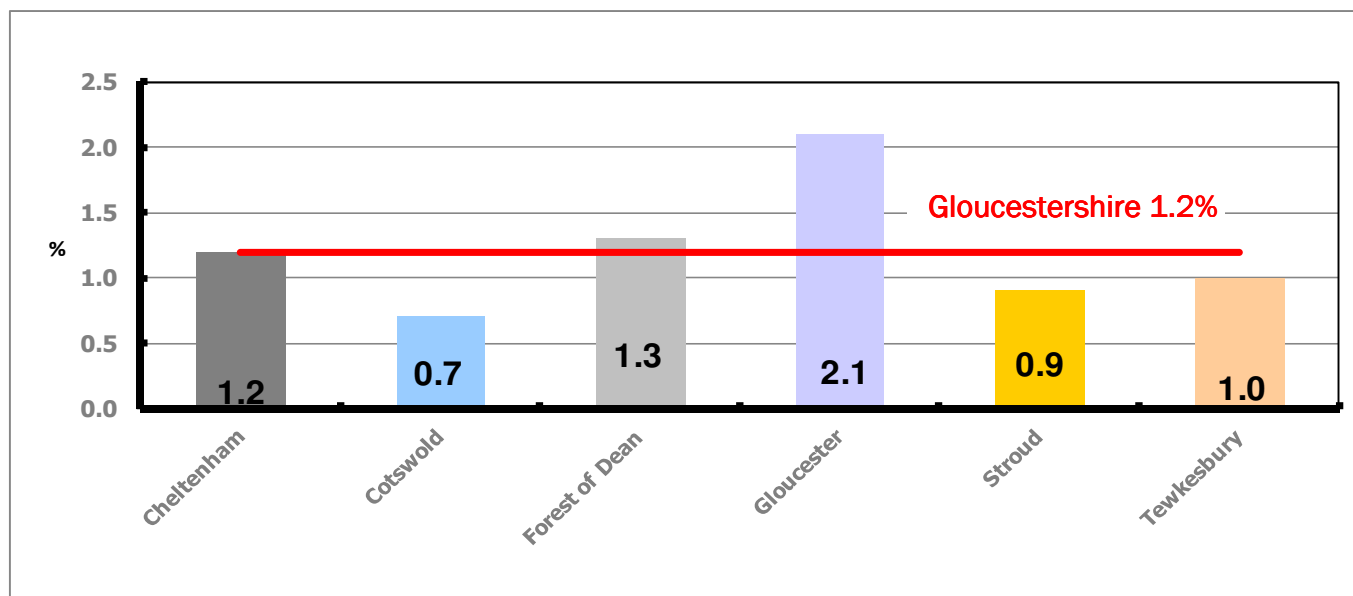


Figure 2 shows the claimant rate for November 2014 in Gloucestershire. Between October 2014 and November 2014 the rate in Cheltenham, Gloucester and Tewkesbury decreased while the rate in Cotswold, Forest of Dean and Stroud remained the same.

Figure 3: Total claimants over the past year across Gloucestershire Districts

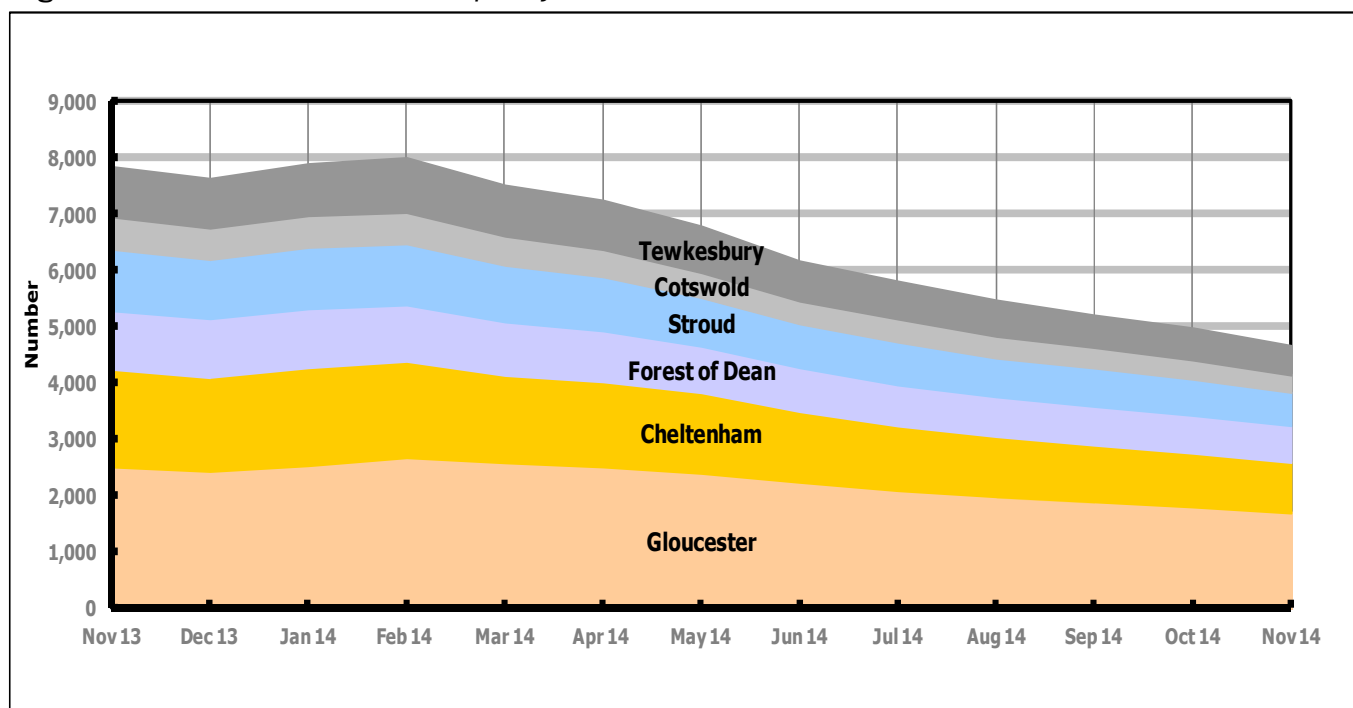


Figure 3 shows the overall claimant count by district over the past year. The number of claimants has decreased over the last year, with the exception of January and February when there was an increase.

Table 2: Analysis of Gloucestershire and District Claimant Counts

Total	Nov 14 Number	Nov 14 Rate	Oct 14 Number	Oct 14 Rate	Monthly change	% monthly change	Monthly change of rate
Gloucestershire	4,678	1.2	4,987	1.3	-309	-6.2%	-0.1
Cheltenham	912	1.2	973	1.3	-61	-6.3%	-0.1
Cotswold	328	0.7	355	0.7	-27	-7.6%	0.0
Forest of Dean	634	1.3	650	1.3	-16	-2.5%	0.0
Gloucester	1,685	2.1	1,789	2.2	-104	-5.8%	-0.1
Stroud	593	0.9	649	0.9	-56	-8.6%	0.0
Tewkesbury	526	1.0	571	1.1	-45	-7.9%	-0.1

Table 2 shows the change in the claimant count in November 2014 compared to October 2014. All districts saw a decrease in the number of claimants.

Table 3: Analysis of Male Gloucestershire and District Claimant Counts

Male	Nov 14 Number	Nov 14 Rate	Oct 14 Number	Oct 14 Rate	Monthly change	% monthly change	Monthly change of rate
Gloucestershire	3,026	1.6	3,226	1.7	-200	-6.2%	-0.1
Cheltenham	614	1.6	664	1.8	-50	-7.5%	-0.2
Cotswold	219	0.9	235	1.0	-16	-6.8%	-0.1
Forest of Dean	403	1.6	415	1.6	-12	-2.9%	0.0
Gloucester	1,112	2.8	1,185	3.0	-73	-6.2%	-0.2
Stroud	353	1.0	379	1.1	-26	-6.9%	-0.1
Tewkesbury	325	1.3	348	1.4	-23	-6.6%	-0.1

Table 3 shows the change in the male claimant count in November 2014 compared to October 2014. All districts saw a decrease in the number of male claimants.

Table 4: Analysis of Female Gloucestershire and District Claimant Counts

Female	Nov 14 Number	Nov 14 Rate	Oct 14 Number	Oct 14 Rate	Monthly change	% monthly change	Monthly change of rate
Gloucestershire	1,652	0.9	1,761	0.9	-109	-6.2%	0.0
Cheltenham	298	0.8	309	0.8	-11	-3.6%	0.0
Cotswold	109	0.4	120	0.5	-11	-9.2%	-0.1
Forest of Dean	231	0.9	235	0.9	-4	-1.7%	0.0
Gloucester	573	1.4	604	1.5	-31	-5.1%	-0.1
Stroud	240	0.7	270	0.8	-30	-11.1%	-0.1
Tewkesbury	201	0.8	223	0.9	-22	-9.9%	-0.1

Table 4 shows the change in the female claimant count in November 2014 compared to October 2014. All districts saw a decrease in the number of female claimants.

PART 4: LOCAL AUTHORITY DISTRICT AND WARD ANALYSIS

This section covers the six districts and a comparison of their constituent wards.

4.1 Cheltenham Borough

Claimant Rate and Claimant Count

Figure 4: Cheltenham Borough claimant rate over the last year

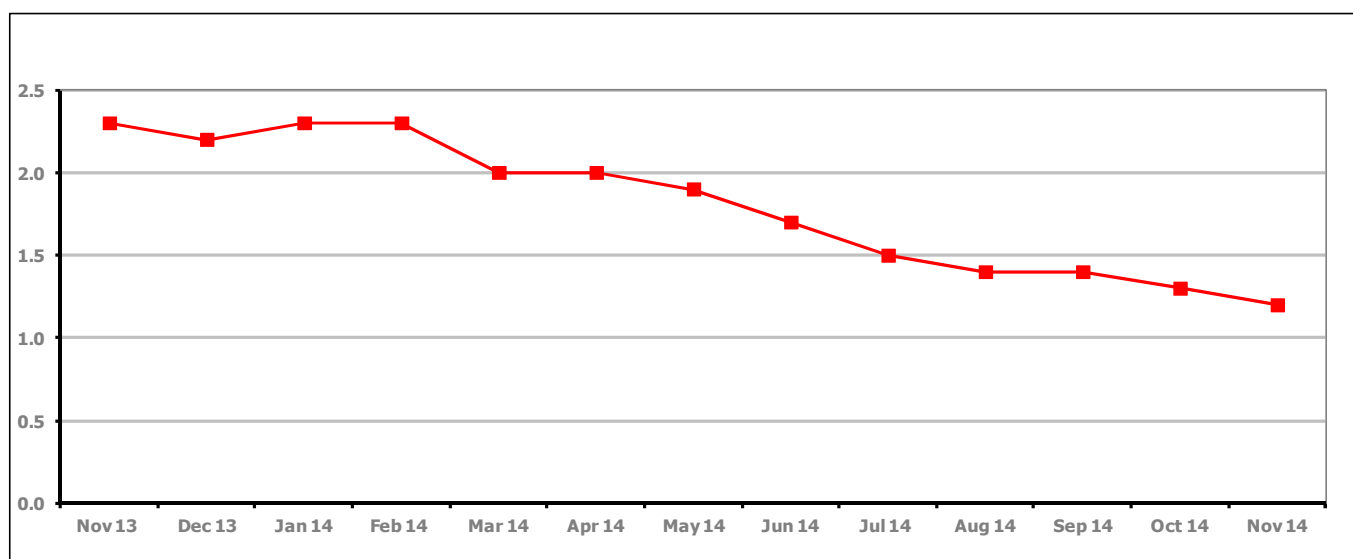


Figure 4 shows the claimant rate in Cheltenham decreased in November 2014 to 1.2%.

Figure 5: Cheltenham Borough claimants - Month on Month and Year on Year change

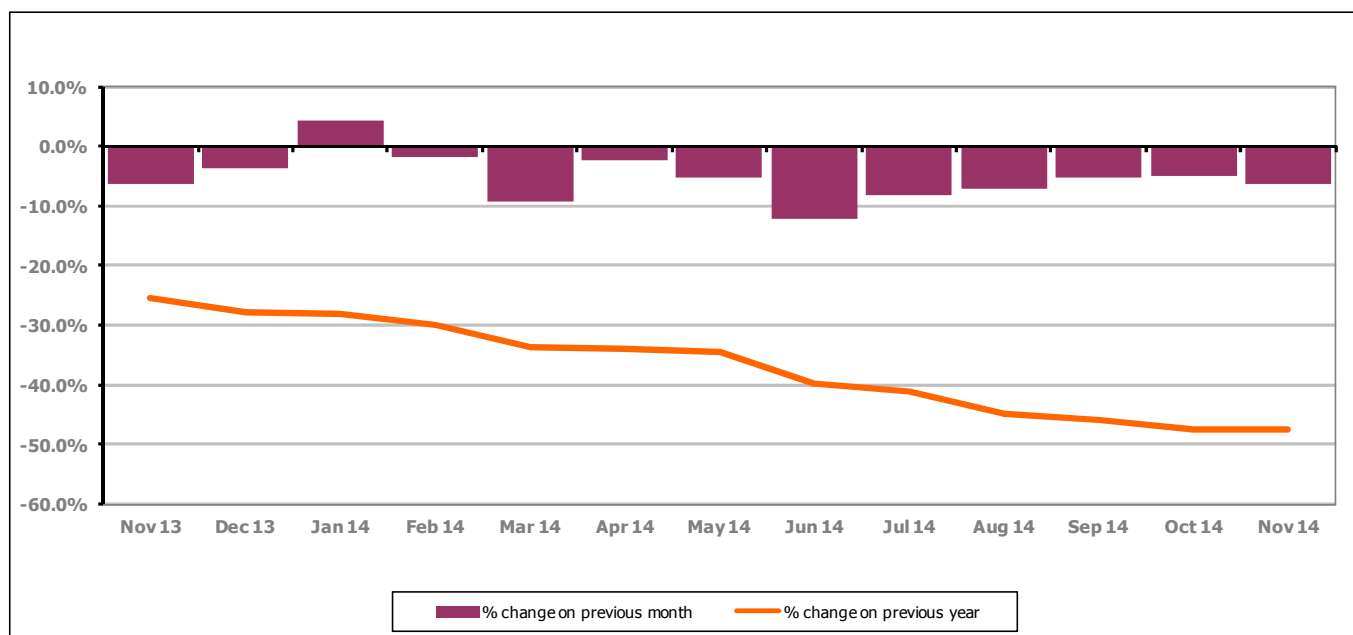


Figure 5 shows the claimant count decreased by 6.3% since last month. The change on the previous year has decreased between October 2014 and November 2014 to -47.6%.

PART 4: LOCAL AUTHORITY DISTRICT AND WARD ANALYSIS

4.1 Cheltenham Borough continued...

Figure 6: Claimant rates across Cheltenham Borough wards - November 2014

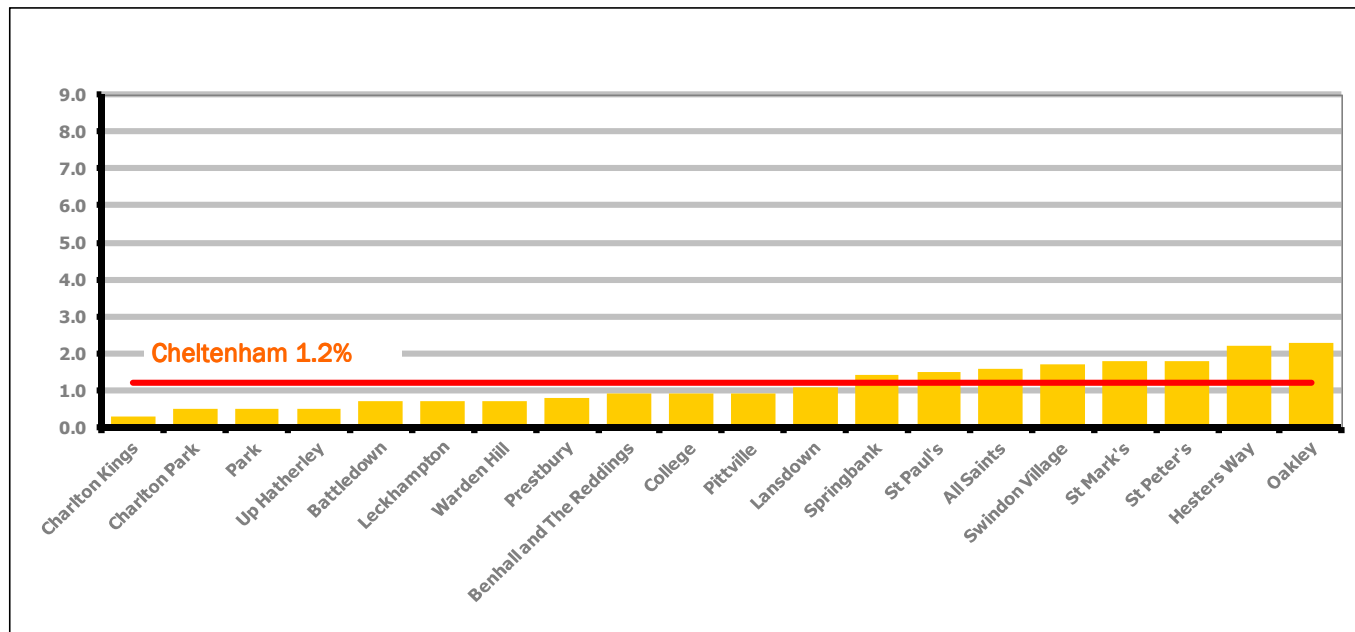


Figure 6 shows the claimant rates for Cheltenham Borough wards. The red line represents the average claimant rate across the Borough of 1.2%. Eight wards lie above the average.

Table 5: Analysis of Claimant Count at Cheltenham Borough ward level - November 2014

District	Ward	Rate	Rank*
Cheltenham	Charlton Kings	0.3	4
Cheltenham	Charlton Park	0.5	20
Cheltenham	Park	0.5	20
Cheltenham	Up Hatherley	0.5	20
Cheltenham	Battledown	0.7	53
Cheltenham	Leckhampton	0.7	53
Cheltenham	Warden Hill	0.7	53
Cheltenham	Prestbury	0.8	69
Cheltenham	Benhall and The Reddings	0.9	80
Cheltenham	College	0.9	80
Cheltenham	Pittville	0.9	80
Cheltenham	Lansdown	1.1	96
Cheltenham	Springbank	1.4	111
Cheltenham	St Paul's	1.5	117
Cheltenham	All Saints	1.6	118
Cheltenham	Swindon Village	1.7	122
Cheltenham	St Mark's	1.8	125
Cheltenham	St Peter's	1.8	125
Cheltenham	Hesters Way	2.2	130
Cheltenham	Oakley	2.3	134

	bottom 10% of county
	first quartile of county
	second quartile of county
	third quartile of county
	fourth quartile of county
	highest 10% of county

* 1 = "best" and 142 = "worst"

Table 5 shows overall claimant rates for Cheltenham Borough wards and their position relative to all wards in Gloucestershire.

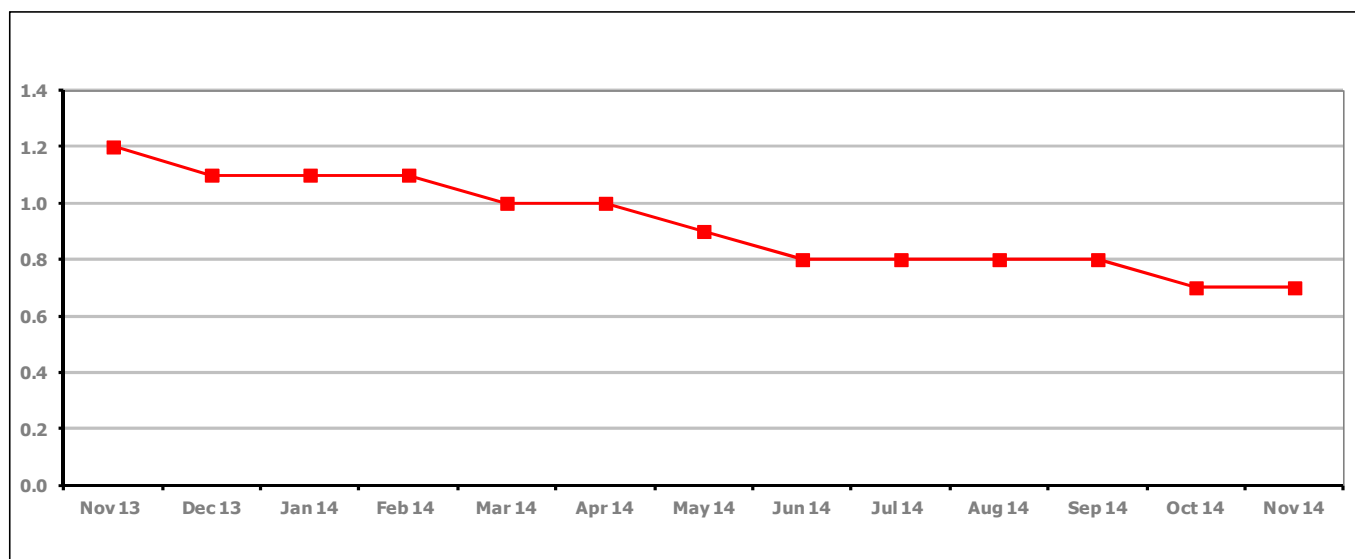
PART 4: LOCAL AUTHORITY DISTRICT AND WARD ANALYSIS**4.2 Cotswold District****Claimant Rate and Claimant Count***Figure 7: Cotswold District claimant rate over the last year*

Figure 7 shows the claimant rate in Cotswold District remained the same as last month at 0.7%.

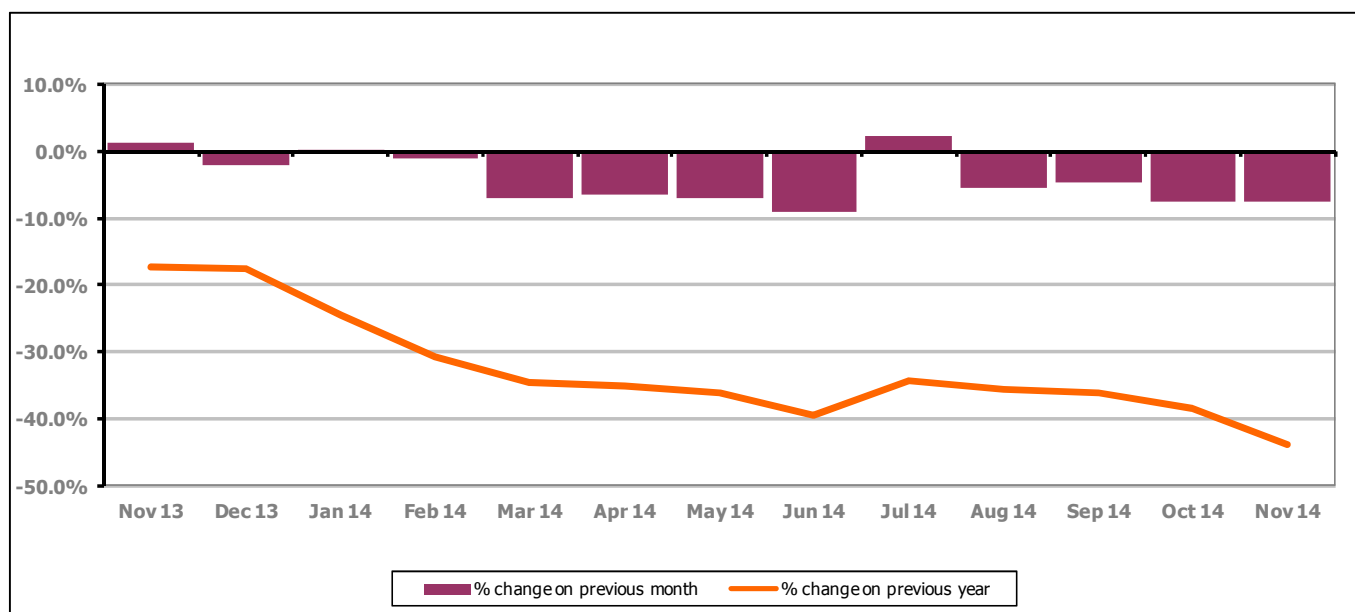
Figure 8: Cotswold District claimants - Month on Month and Year on Year change

Figure 8 shows the claimant count decreased by 7.6% since October 2014. The change on the previous year has decreased between October 2014 and November 2014 to -43.7%.

PART 4: LOCAL AUTHORITY DISTRICT AND WARD ANALYSIS

4.2 Cotswold District continued...

Figure 9: Claimant rates across Cotswold District wards - November 2014

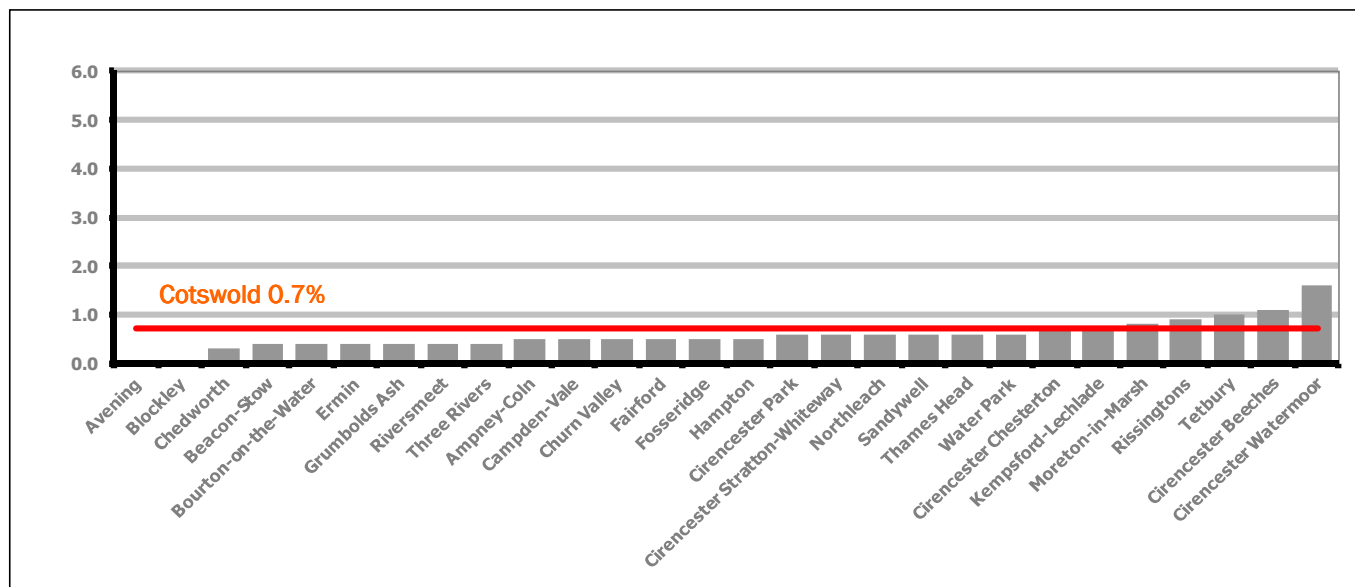
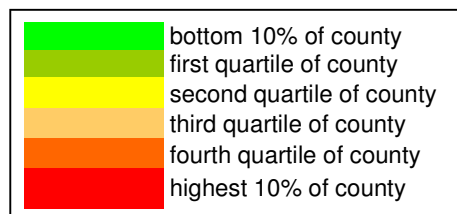


Figure 9 shows the claimant rates for Cotswold District wards. The red line represents the average claimant rate across the District of 0.7%. Five wards lie above the average.

Table 6: Analysis of Claimant Count at Cotswold District ward level - November 2014

District	Ward	Rate	Rank*
Cotswolds	Avening	<0.2	1
Cotswolds	Blockley	<0.2	1
Cotswolds	Chedworth	0.3	4
Cotswolds	Beacon-Stow	0.4	12
Cotswolds	Bourton-on-the-Water	0.4	12
Cotswolds	Ermin	0.4	12
Cotswolds	Grumbolds Ash	0.4	12
Cotswolds	Riversmeet	0.4	12
Cotswolds	Three Rivers	0.4	12
Cotswolds	Ampney-Coln	0.5	20
Cotswolds	Campden-Vale	0.5	20
Cotswolds	Churn Valley	0.5	20
Cotswolds	Fairford	0.5	20
Cotswolds	Fosseridge	0.5	20
Cotswolds	Hampton	0.5	20
Cotswolds	Cirencester Park	0.6	34
Cotswolds	Cirencester Stratton-Whiteway	0.6	34
Cotswolds	Northleach	0.6	34
Cotswolds	Sandywell	0.6	34
Cotswolds	Thames Head	0.6	34
Cotswolds	Water Park	0.6	34
Cotswolds	Cirencester Chesterton	0.7	53
Cotswolds	Kempsford-Lechlade	0.7	53
Cotswolds	Moreton-in-Marsh	0.8	69
Cotswolds	Rissingtons	0.9	80
Cotswolds	Tetbury	1.0	90
Cotswolds	Cirencester Beeches	1.1	96
Cotswolds	Cirencester Watermoor	1.6	118



* 1 = "best" and 142 = "worst"

Table 6 shows overall claimant rates for Cotswold District wards and their position relative to all wards in Gloucestershire.

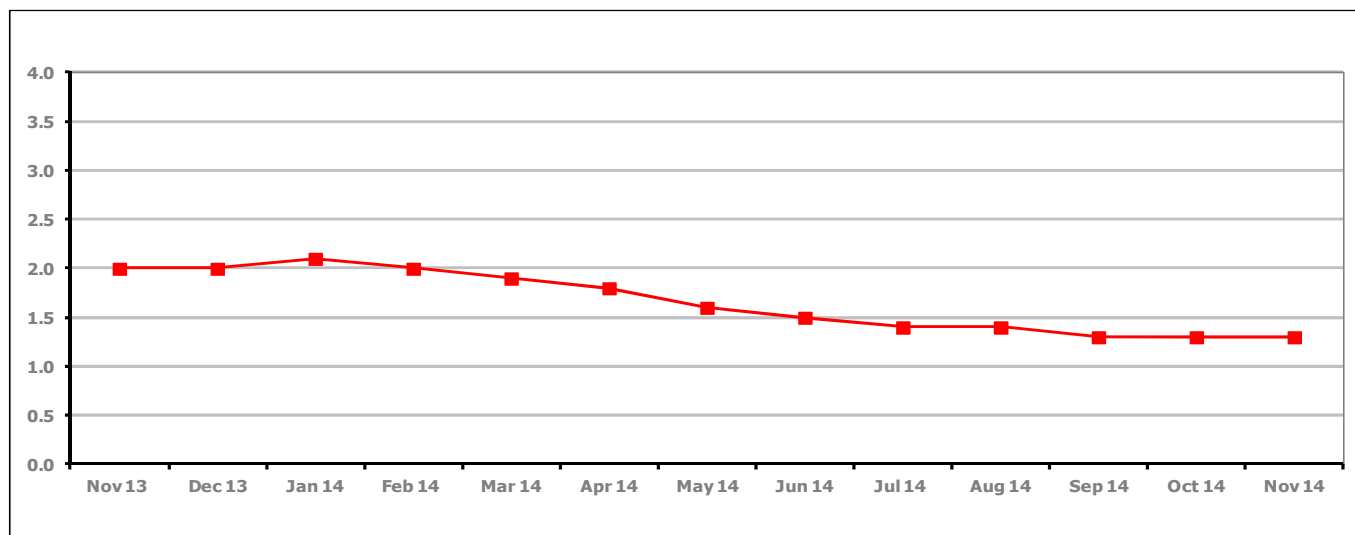
PART 4: LOCAL AUTHORITY DISTRICT AND WARD ANALYSIS**4.3 Forest of Dean District****Claimant Rate and Claimant Count***Figure 10: Forest of Dean District claimant rate over the last year*

Figure 10 shows the claimant rate in the Forest of Dean remained the same as the last two months at 1.3%.

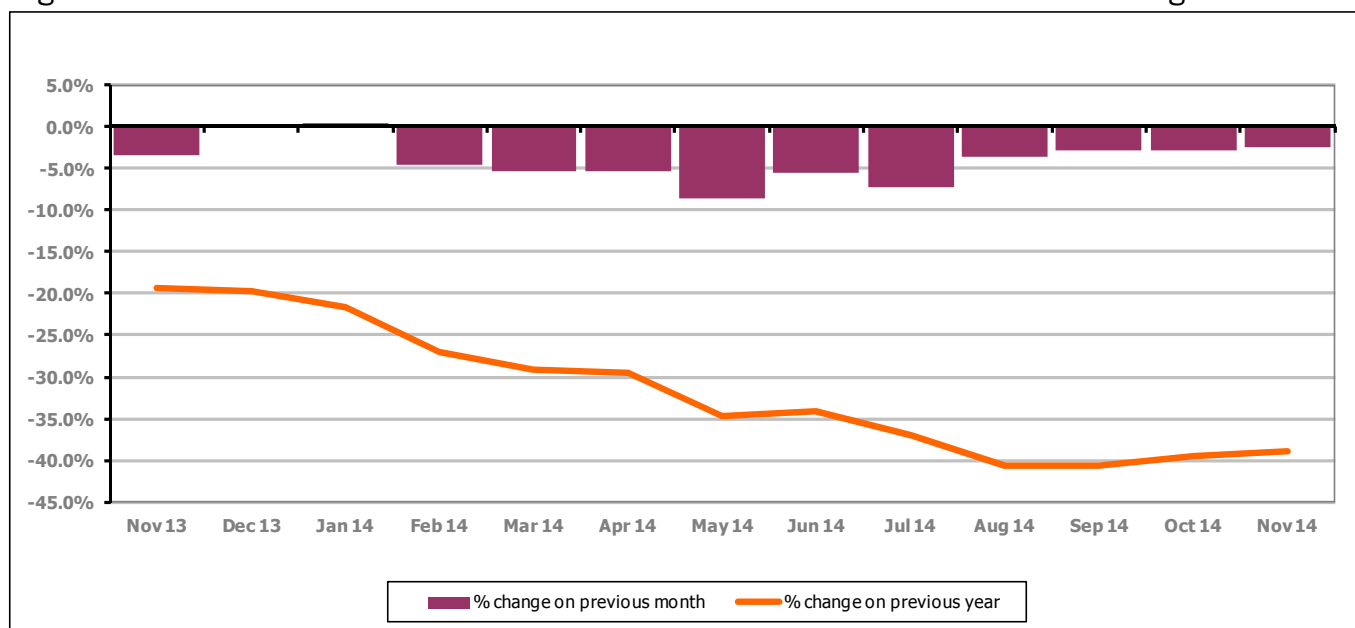
Figure 11: Forest of Dean District claimants - Month on Month and Year on Year change

Figure 11 shows the claimant count decreased by 2.5% since October 2014. The change on the previous year has increased between October 2014 and November 2014 to -38.9%.

PART 4: LOCAL AUTHORITY DISTRICT AND WARD ANALYSIS

4.3 Forest of Dean District continued...

Figure 12: Claimant rates across Forest of Dean District wards - November 2014

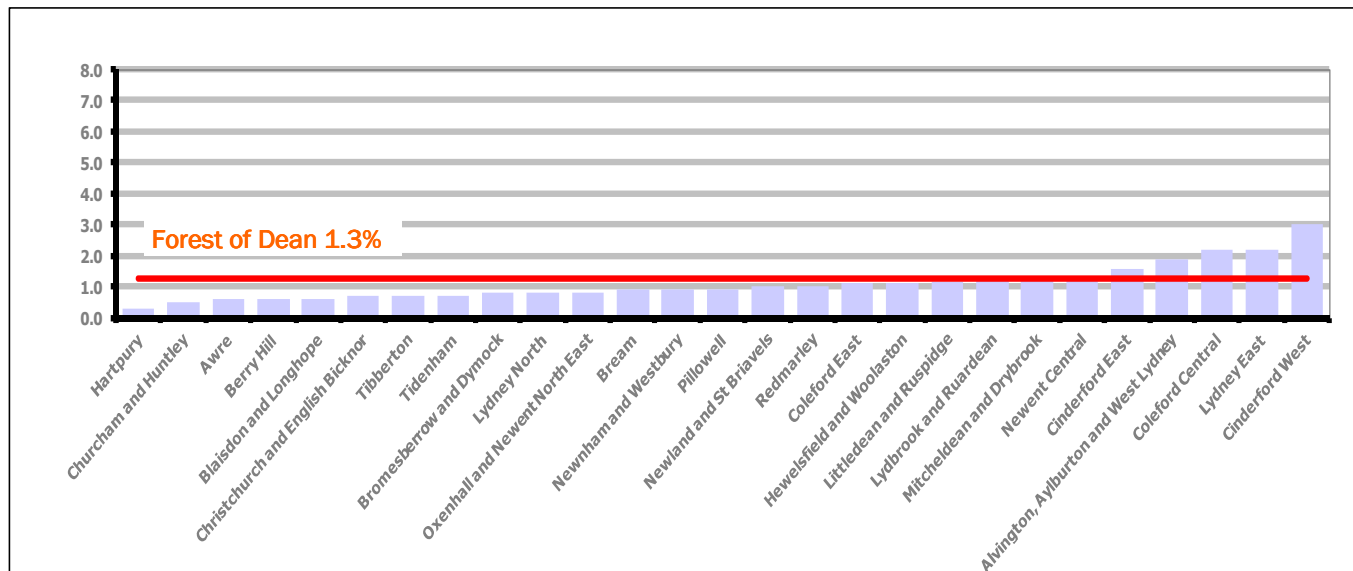
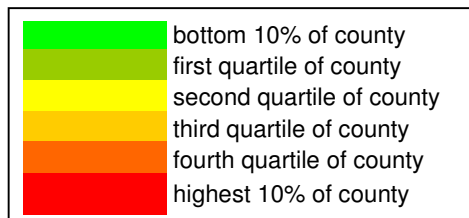


Figure 12 shows the claimant rates for Forest of Dean District wards. The red line represents the average claimant rate across the District of 1.3 %. Five wards lie above the average.

Table 7: Analysis of Claimant Count at Forest of Dean District ward level - November 2014

District	Ward	Rate	Rank*
Forest	Hartpury	0.3	4
Forest	Churcham and Huntley	0.5	20
Forest	Awre	0.6	34
Forest	Berry Hill	0.6	34
Forest	Blaisdon and Longhope	0.6	34
Forest	Christchurch and English Bicknor	0.7	53
Forest	Tibberton	0.7	53
Forest	Tidenham	0.7	53
Forest	Bromesberrow and Dymock	0.8	69
Forest	Lydney North	0.8	69
Forest	Oxenhall and Newent North East	0.8	69
Forest	Bream	0.9	80
Forest	Newnham and Westbury	0.9	80
Forest	Pillowell	0.9	80
Forest	Newland and St Briavels	1.0	90
Forest	Redmarley	1.0	90
Forest	Coleford East	1.1	96
Forest	Hewelsfield and Woolaston	1.1	96
Forest	Littledean and Ruspidge	1.2	101
Forest	Lydbrook and Ruardean	1.3	106
Forest	Mitcheldean and Drybrook	1.3	106
Forest	Newent Central	1.3	106
Forest	Cinderford East	1.6	118
Forest	Alvington, Aylburton and West Lydney	1.9	129
Forest	Coleford Central	2.2	130
Forest	Lydney East	2.2	130
Forest	Cinderford West	3.0	137



* 1 = "best" and 142 = "worst"

Table 7 shows overall claimant rates for the Forest of Dean District wards and their position relative to all wards in Gloucestershire.

PART 4: LOCAL AUTHORITY DISTRICT AND WARD ANALYSIS

4.4 Gloucester City

Claimant Rate and Claimant Count

Figure 13: Gloucester City claimant rate over the last year

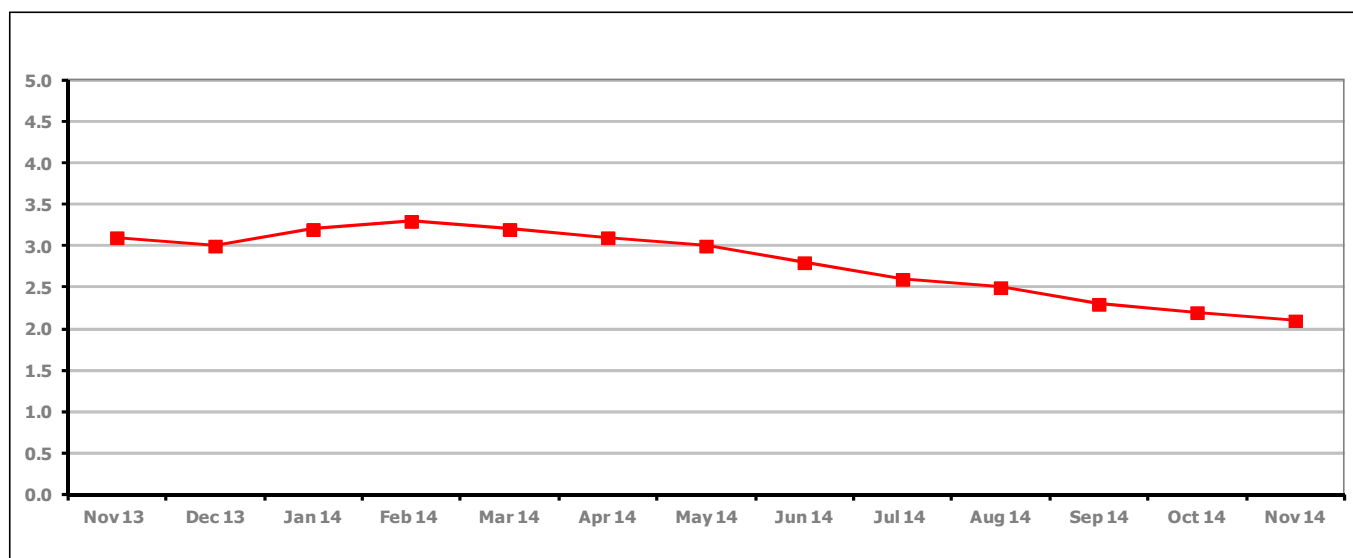


Figure 13 shows the claimant rate for Gloucester City decreased in November 2014 to 2.1%.

Figure 14: Gloucester City claimants - Month on Month and Year on Year change

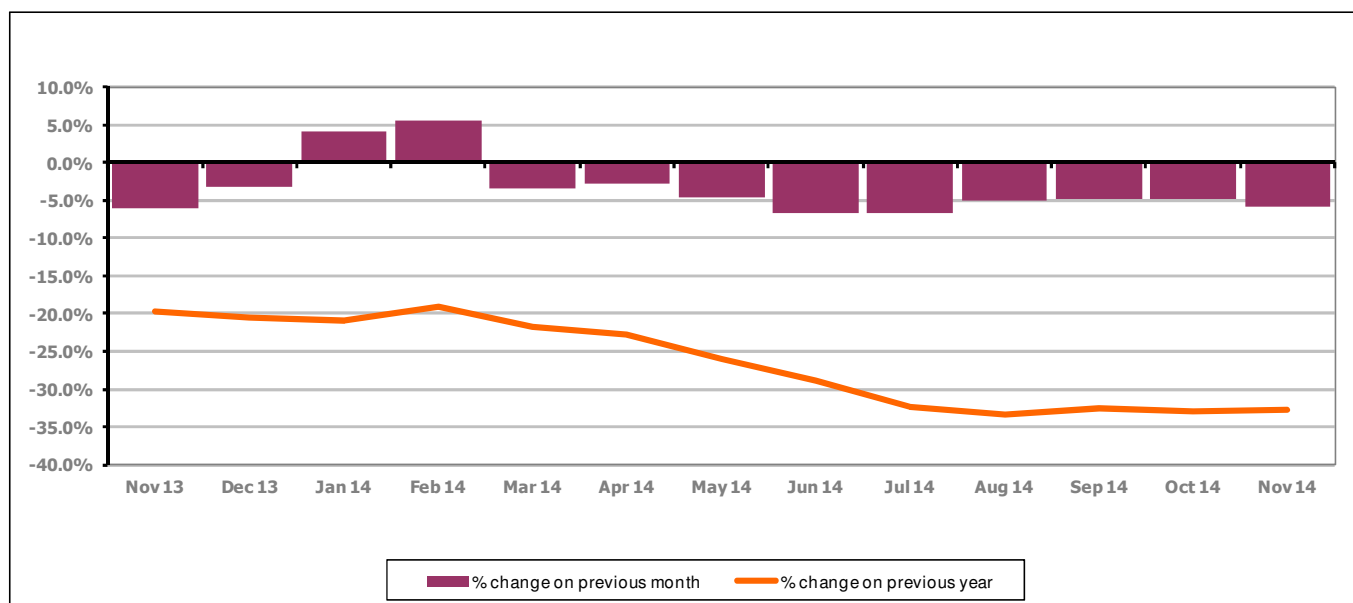


Figure 14 shows the monthly claimant count decreased by 5.8% since October 2014. The change on the previous year has increased between October 2014 and November 2014 to -32.8%.

PART 4: LOCAL AUTHORITY DISTRICT AND WARD ANALYSIS

4.4 Gloucester City continued...

Figure 15: Claimant rates across Gloucester City wards - November 2014

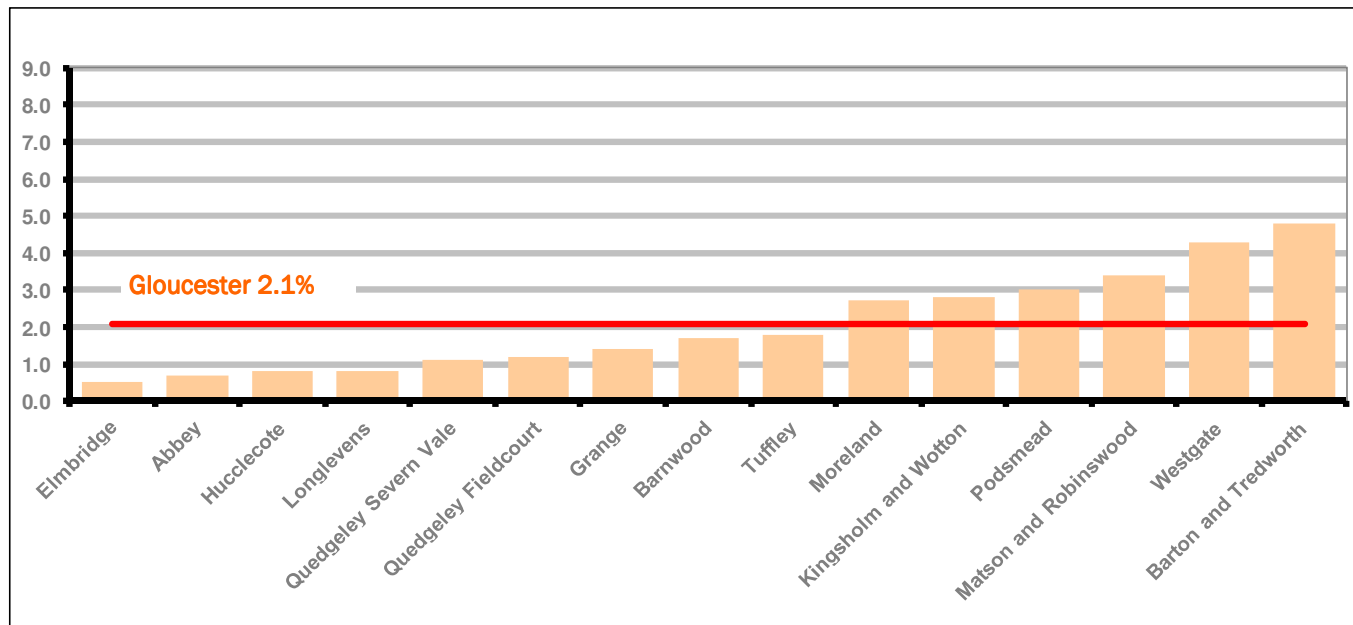
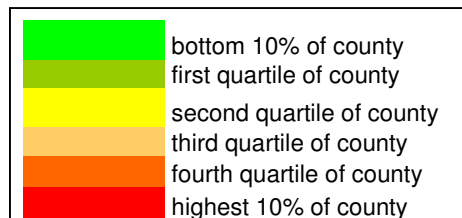


Figure 15 shows the claimant rates for Gloucester City district wards. The red line represents the average claimant rate across the City of 2.1%. Six wards lie above the average.

Table 8: Analysis of Claimant Count at Gloucester City ward level - November 2014

District	Ward	Rate	Rank*
Gloucester	Elmbridge	0.5	20
Gloucester	Abbey	0.7	53
Gloucester	Hucclecote	0.8	69
Gloucester	Longlevens	0.8	69
Gloucester	Quedgeley Severn Vale	1.1	96
Gloucester	Quedgeley Fieldcourt	1.2	101
Gloucester	Grange	1.4	111
Gloucester	Barnwood	1.7	122
Gloucester	Tuffley	1.8	125
Gloucester	Moreland	2.7	135
Gloucester	Kingsholm and Wotton	2.8	136
Gloucester	Podsmead	3.0	137
Gloucester	Matson and Robinswood	3.4	140
Gloucester	Westgate	4.3	141
Gloucester	Barton and Tredworth	4.8	142



* 1 = "best" and 142 = "worst"

Table 8 shows overall claimant rates for Gloucester City wards and their position relative to all wards in Gloucestershire.

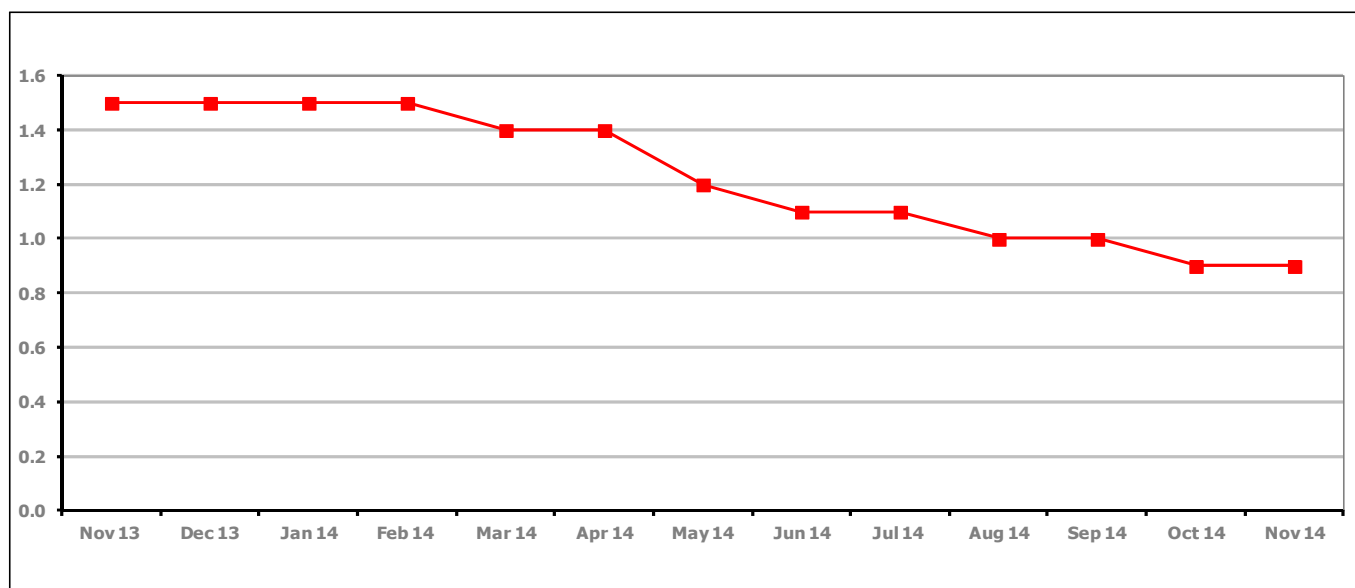
PART 4: LOCAL AUTHORITY DISTRICT AND WARD ANALYSIS**4.5 Stroud District****Claimant Rate and Claimant Count***Figure 16: Stroud District claimant rate over the last year*

Figure 16 shows the claimant rate for Stroud remained the same as last month at 0.9%.

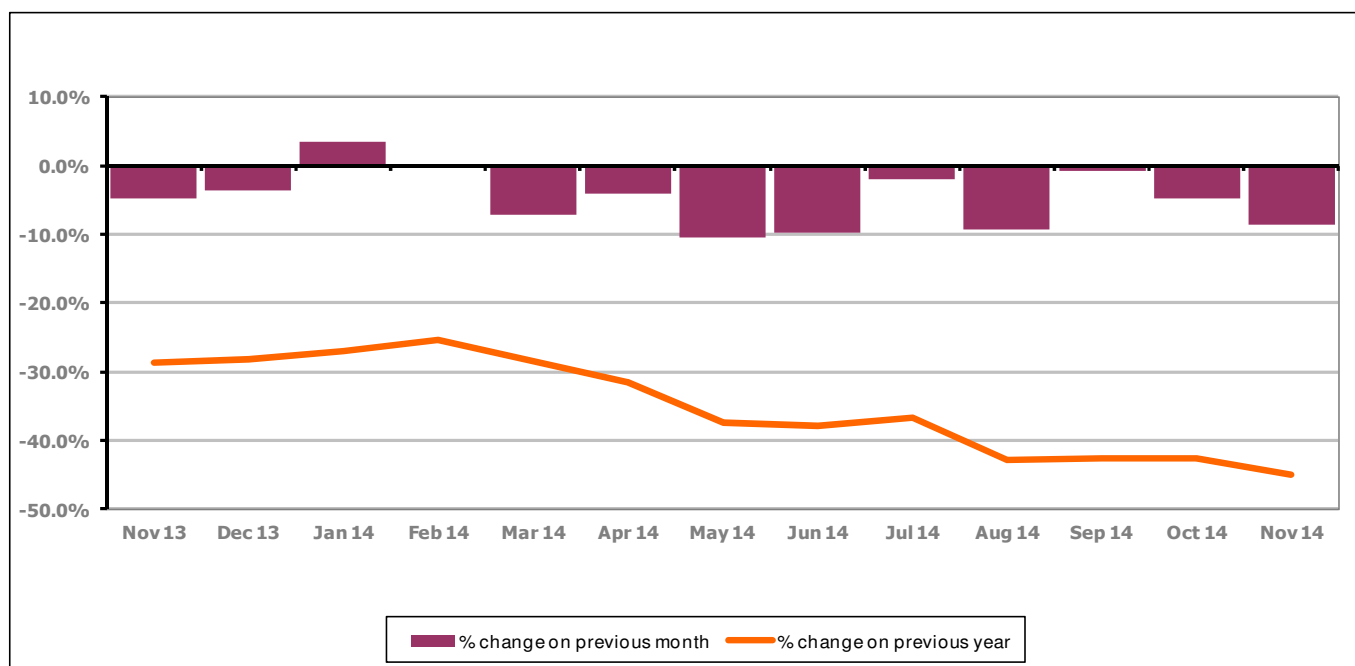
Figure 17: Stroud District claimants - Month on Month and Year on Year change

Figure 17 shows the monthly claimant count decreased by 8.6% since October 2014. The change on the previous year has decreased between October 2014 and November 2014 to -45.0%.

PART 4: LOCAL AUTHORITY AND DISTRICT ANALYSIS

4.5 Stroud District continued...

Figure 18: Claimant rates across Stroud District wards - November 2014

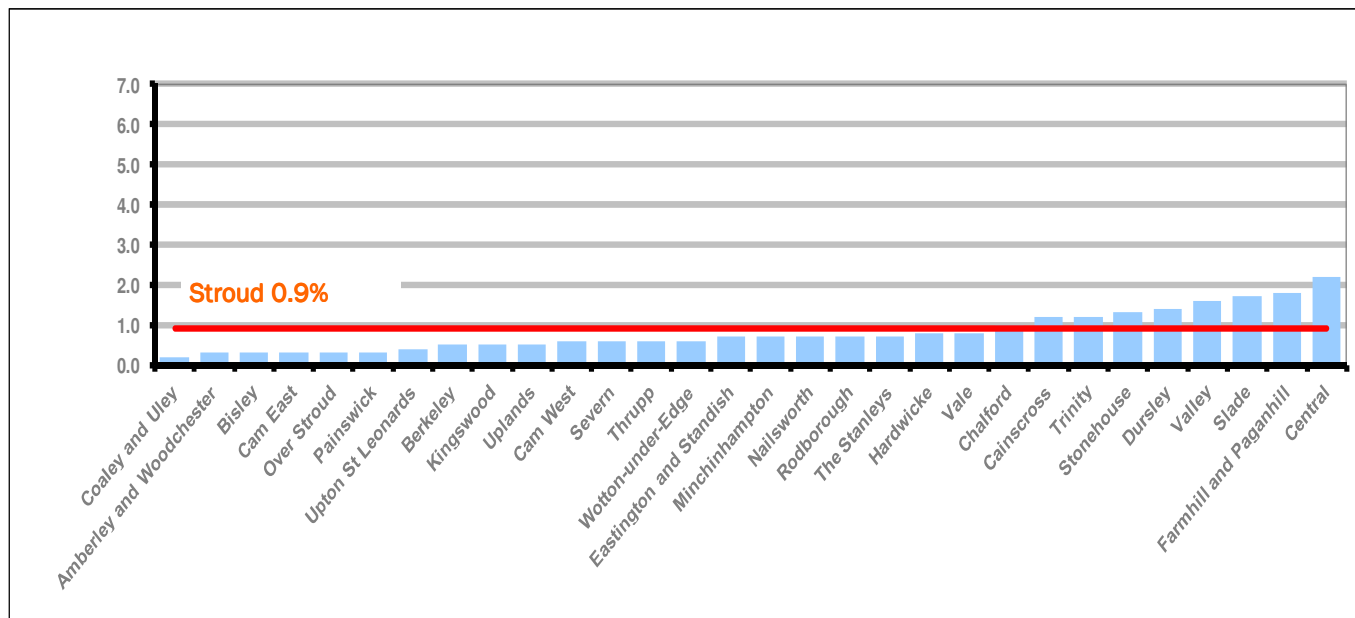
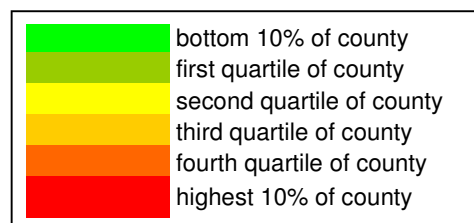


Figure 18 shows the claimant rates in Stroud District wards. The red line represents the average claimant rate across the District of 0.9%. Nine wards are above the average.

Table 9: Analysis of Claimant Count at Stroud District ward level - November 2014

District	Ward	Rate	Rank*
Stroud	Coaley and Uley	0.2	3
Stroud	Amberley and Woodchester	0.3	4
Stroud	Bisley	0.3	4
Stroud	Cam East	0.3	4
Stroud	Over Stroud	0.3	4
Stroud	Painswick	0.3	4
Stroud	Upton St Leonards	0.4	12
Stroud	Berkeley	0.5	20
Stroud	Kingswood	0.5	20
Stroud	Uplands	0.5	20
Stroud	Cam West	0.6	34
Stroud	Severn	0.6	34
Stroud	Thrupp	0.6	34
Stroud	Wotton-under-Edge	0.6	34
Stroud	Eastington and Standish	0.7	53
Stroud	Minchinhampton	0.7	53
Stroud	Nailsworth	0.7	53
Stroud	Rodborough	0.7	53
Stroud	The Stanleys	0.7	53
Stroud	Hardwicke	0.8	69
Stroud	Vale	0.8	69
Stroud	Chalford	1.0	90
Stroud	Cainscross	1.2	101
Stroud	Trinity	1.2	101
Stroud	Stonehouse	1.3	106
Stroud	Dursley	1.4	111
Stroud	Valley	1.6	118
Stroud	Slade	1.7	122
Stroud	Farmhill and Paganhill	1.8	125
Stroud	Central	2.2	130



* 1 = "best" and 142 = "worst"

Table 9 shows overall claimant rates for Stroud District wards and their position relative to all wards in Gloucestershire.

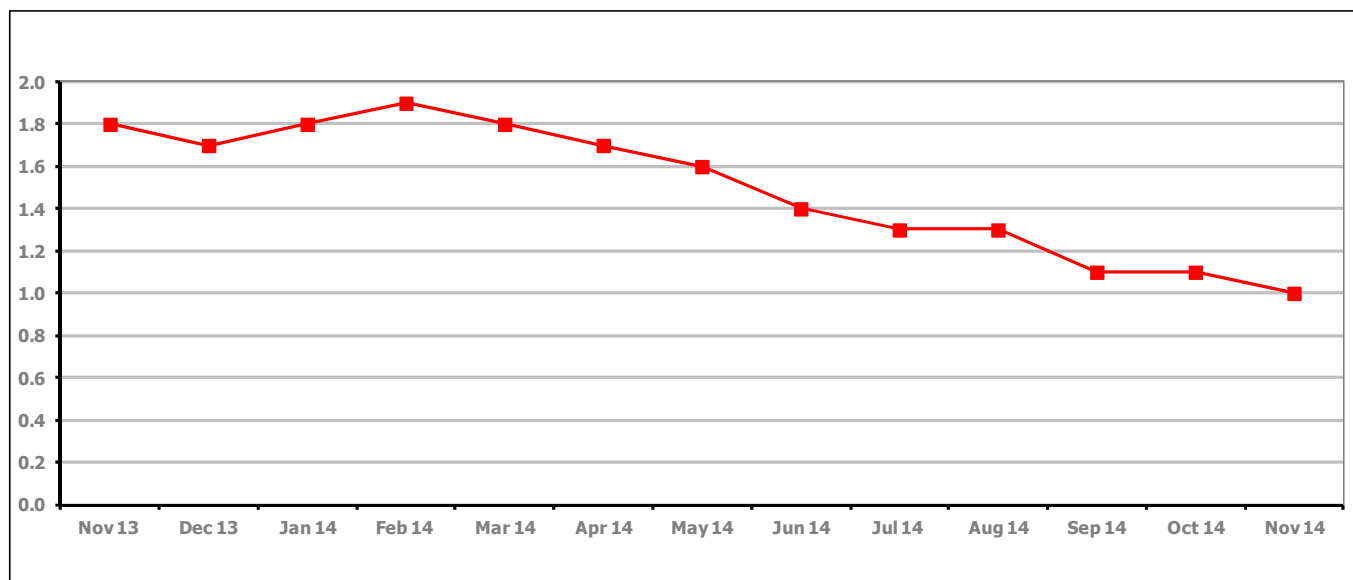
PART 4: LOCAL AUTHORITY DISTRICT AND WARD ANALYSIS**4.6 Tewkesbury District****Claimant Rate and Claimant Count***Figure 19: Tewkesbury District claimant rate over the last year*

Figure 19 shows the claimant rate for Tewkesbury District decreased in November 2014 to 1.0%.

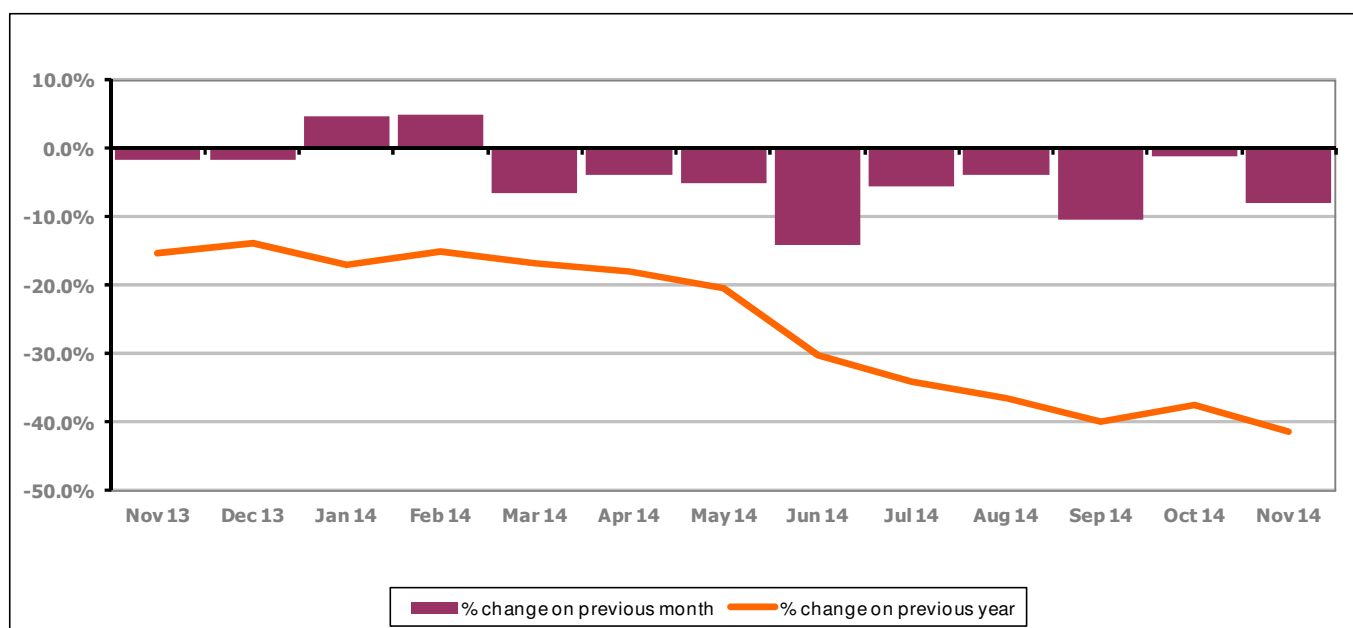
Figure 20: Tewkesbury District claimants - Month on Month and Year on Year change

Figure 20 shows that the monthly claimant count decreased by 7.9% since October 2014. The change on the previous year decreased between October 2014 and November 2014 to -41.4%.

PART 4: LOCAL AUTHORITY AND DISTRICT ANALYSIS

4.6 Tewkesbury District continued...

Figure 21: Claimant rates across Tewkesbury District wards - November 2014

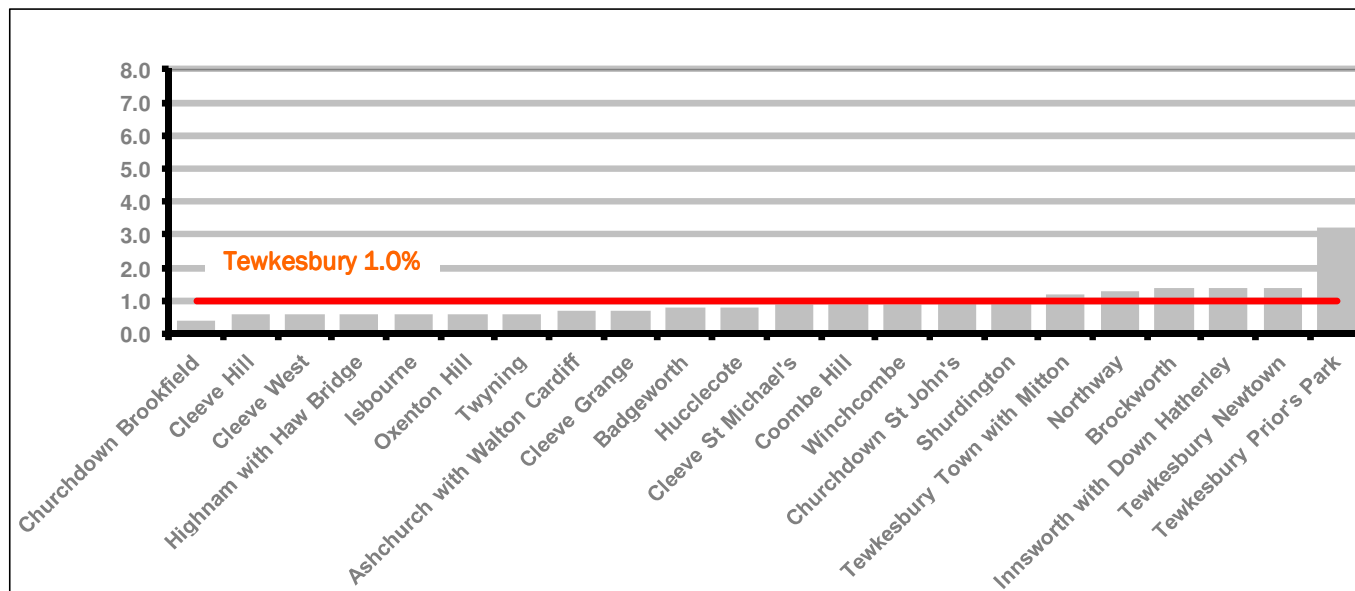
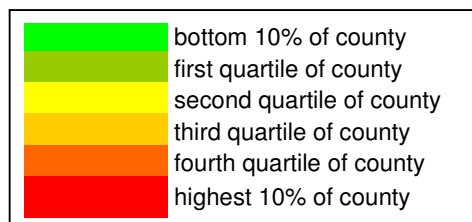


Figure 21 shows the claimant rates in Tewkesbury District wards. The red line represents the average claimant rate across the District of 1.0% and six wards are above the average.

Table 10: Analysis of Claimant Count at Tewkesbury District level - November 2014

District	Ward	Rate	Rank*
Tewkesbury	Churchdown Brookfield	0.4	12
Tewkesbury	Cleeve Hill	0.6	34
Tewkesbury	Cleeve West	0.6	34
Tewkesbury	Highnam with Haw Bridge	0.6	34
Tewkesbury	Isbourne	0.6	34
Tewkesbury	Oxenton Hill	0.6	34
Tewkesbury	Twynning	0.6	34
Tewkesbury	Ashchurch with Walton Cardiff	0.7	53
Tewkesbury	Cleeve Grange	0.7	53
Tewkesbury	Badgeworth	0.8	69
Tewkesbury	Hucclecote	0.8	69
Tewkesbury	Cleeve St Michael's	0.9	80
Tewkesbury	Coombe Hill	0.9	80
Tewkesbury	Winchcombe	0.9	80
Tewkesbury	Churchdown St John's	1.0	90
Tewkesbury	Shurdington	1.0	90
Tewkesbury	Tewkesbury Town with Mitton	1.2	101
Tewkesbury	Northway	1.3	106
Tewkesbury	Brockworth	1.4	111
Tewkesbury	Innsworth with Down Hatherley	1.4	111
Tewkesbury	Tewkesbury Newtown	1.4	111
Tewkesbury	Tewkesbury Prior's Park	3.2	139

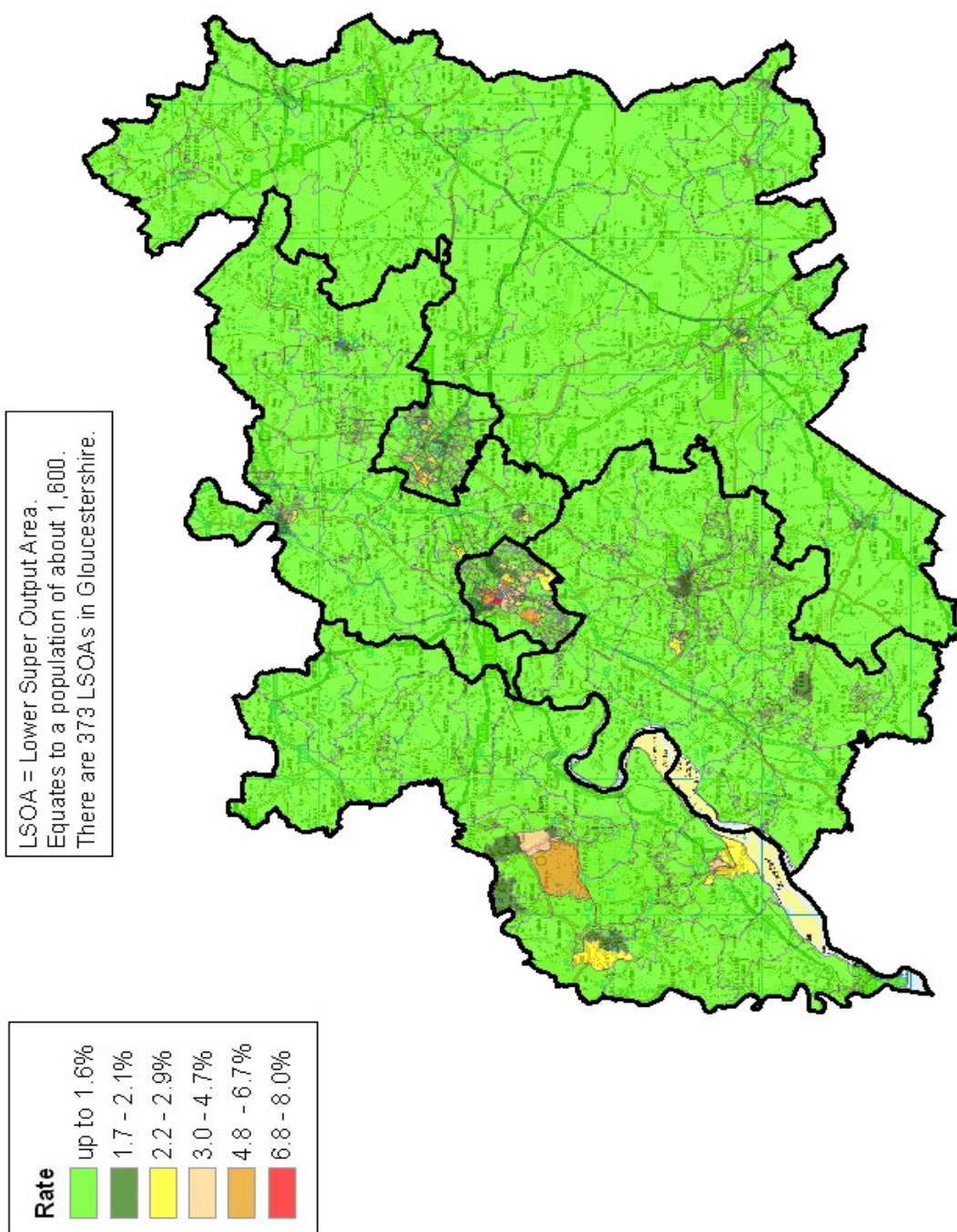


* 1 = "best" and 142 = "worst"

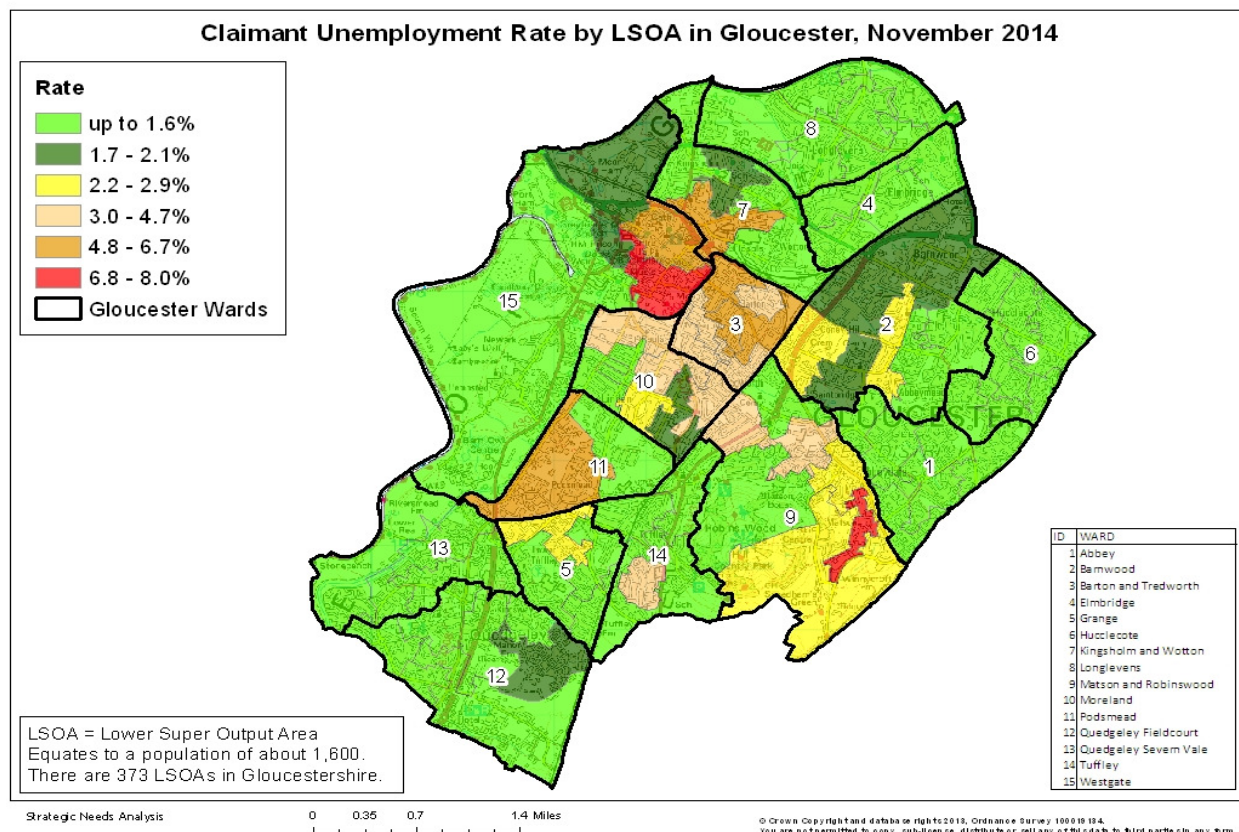
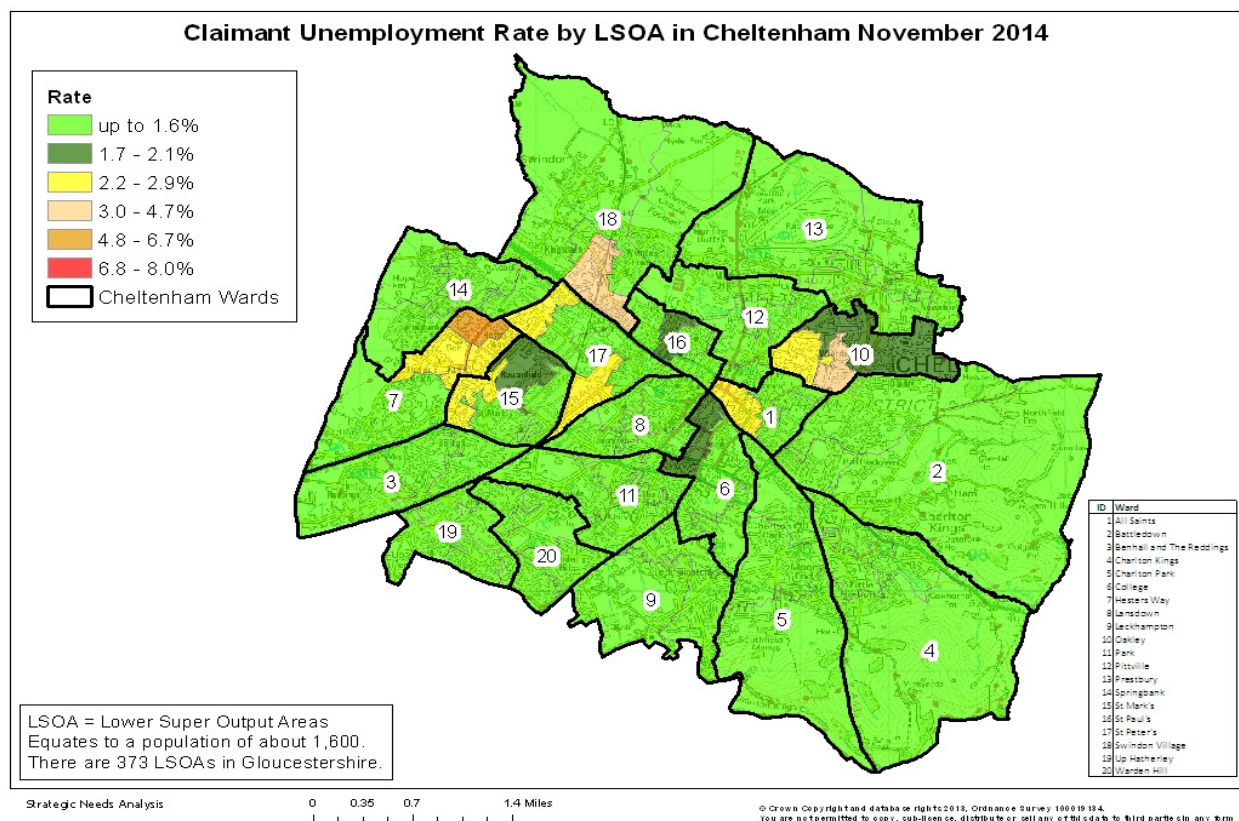
Table 10 shows overall claimant rates for Tewkesbury District wards and their position relative to all wards in Gloucestershire.

PART 5: MAP SHOWING DISTRIBUTION OF CLAIMANT RATE ACROSS GLOUCESTERSHIRE

Claimant Unemployment Rate by LSOA in Gloucestershire, November 2014



PART 5: MAP SHOWING DISTRIBUTION OF CLAIMANT RATE ACROSS GLOUCESTERSHIRE



PART 6: YOUTH UNEMPLOYMENT(18-24 year olds)

Youth Claimant Rate and Claimant Count

The claimant rate for young people is higher than for the working age (16-64) population with 2.2% of 18-24 year olds in Gloucestershire claiming Job Seekers Allowance (1.2% for working age).

Figure 22: Youth Claimant Rate for Gloucestershire, the South West and UK over the past year

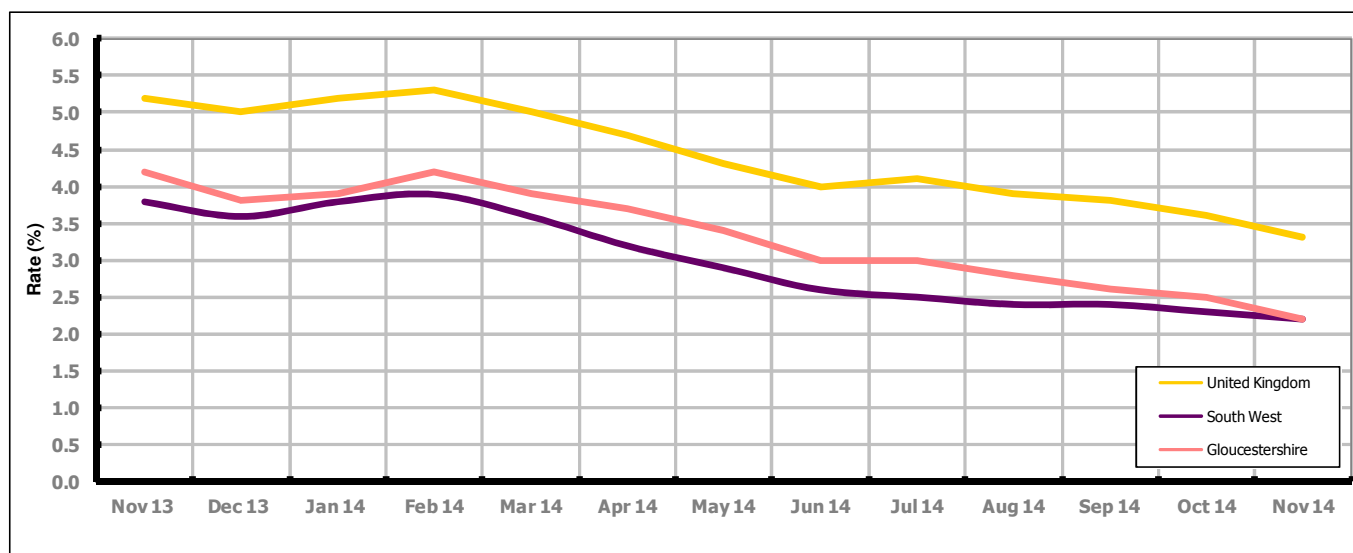


Figure 22 shows Gloucestershire's 18-24 claimant rate is the same as the South West average of 2.2%, but 1.1% lower than the UK average of 3.3%

Figure 23: Claimant Count for Gloucestershire over the past year



Figure 23 shows that in November 2014, 1,100 people aged 18-24 were claiming Job Seekers Allowance in Gloucestershire, this represents 23.5% of total working age claimants.

PART 6: YOUTH UNEMPLOYMENT

Youth Claimant Rate and Claimant Count

Figure 24: Youth Claimant Rate for Gloucestershire, the South West and UK over the past year

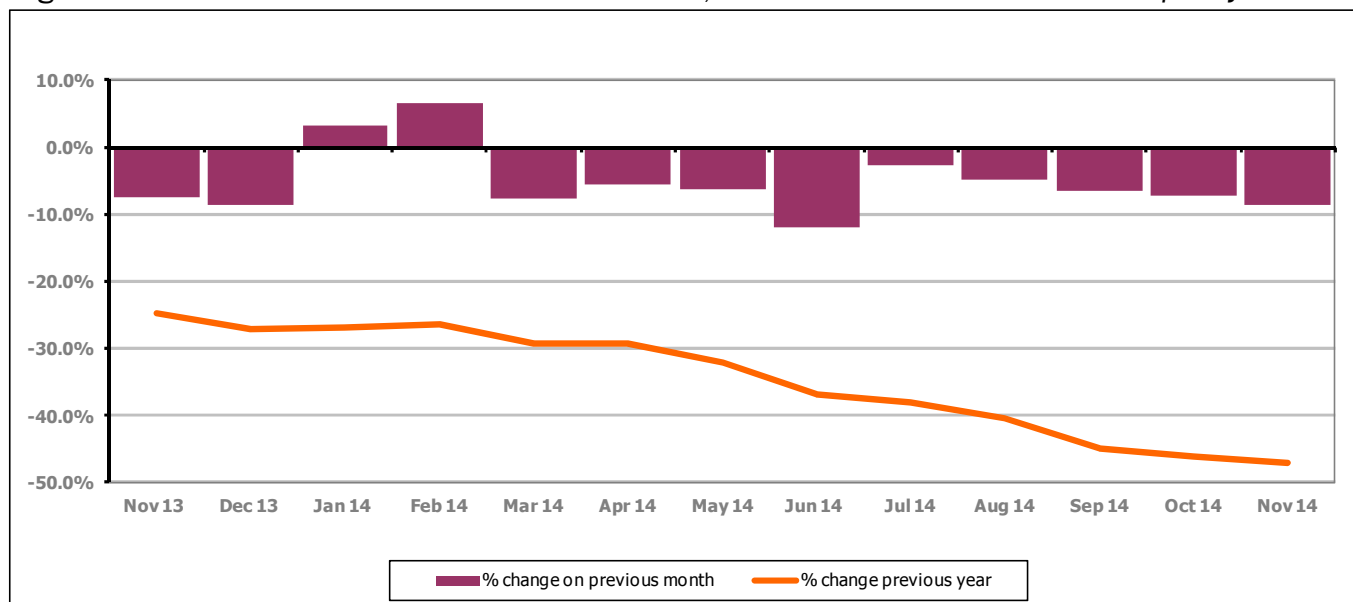


Figure 24 shows the number of young claimants decreased in November 2014 by 8.7% this represented 105 people. Over the last year the number of young claimants fell by 47.0% or 975 people.

Youth unemployment and duration of claim

Figure 25: Duration of claim in the 18-24 year age group

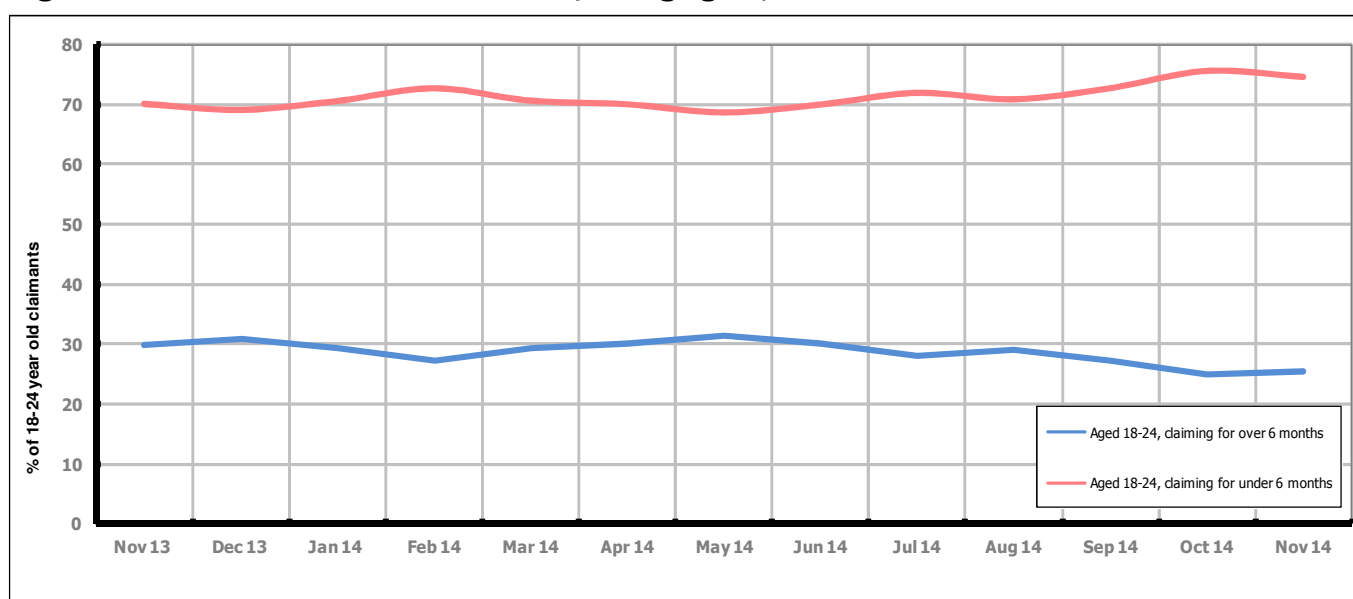


Figure 25 shows the proportion of 18-24 year olds claiming for less than six months decreased from 75.5% of 18-24 year old claimants in October to 74.5% in November. During the same period those claiming for more then six months increased from 24.9% to 25.5%.

PART 7: YOUNG PEOPLE NOT IN EDUCATION, EMPLOYMENT OR TRAINING (NEET) IN GLOUCESTERSHIRE

Data provided by Gloucestershire Youth Support Team on the situation of young people (16-18) in Gloucestershire who are not in education, employment or formal training.

Gloucestershire Youth Support Team is required to report performance with the 16-18 age range against nationally defined criteria for counting the NEET group. The NEET group includes young people actively seeking education, employment or training as well as those young people who are either not yet ready or who are unable to access these opportunities because of their personal circumstances. The figures quoted below include young people in both of these categories.

Summary

At the end of November 2014 there were 603 young people aged 16-18 not in education, employment or training in Gloucestershire and this figure translates into an adjusted (*) 16-18 NEET population of 3.98%. The total number of NEET increased by 8 young people in November 2014 compared to October 2014. Three districts had an increase in their NEET figures and three districts decreased.

Total NEET Group by District Area

November 2014 NEET data

	Cheltenham	Cotswold	Forest	Gloucester	Stroud	Tewkesbury	Total
Total NEET	117	61	93	180	83	69	603
Cohort	2783	2288	2266	4896	3181	1899	17313
% NEET	4.2	2.7	4.1	3.7	2.6	4.4	3.98

If you would like to receive any further information on Gloucestershire's NEET strategy then please contact Ruth.Critchlow@gloucestershire.gov.uk or telephone 01452 426900.

(*) Adjustment includes a proportion of young people aged 16-18 whose outcomes are not-known to Gloucestershire Youth Support Team.