

Unemployment Bulletin

Issue 119 June 2018

Contents

Part 1: Summary A summary of unemployment data at district, County, regional and national level	1
Part 2: County Unemployment figures for the County compared to the South West and the rest of the UK	3
Part 3: Districts A comparative break down of unemployment figures by district	4
Part 4: Wards Further breakdown of unemployment figures by ward:	
Cheltenham	6
Cotswolds	8
Forest of Dean	10
Gloucester	12
Stroud	14
Tewkesbury	16
Part 5: Map Distribution of claimant rate across Gloucestershire	18
Part 6: Youth Unemployment Unemployment data for the 18-24 year old age group	20
Part 7: Young People Data about Young People Not in Education, Employment or Training (NEET)	21

The Claimant Count is a measure of the number of people who are unemployed and claiming benefits. From 1996 until the recent introduction of Universal Credit, this was based on the number of people claiming Jobseeker's Allowance. However, since its introduction some unemployment benefit claimants will be claiming Universal Credit instead. **To reflect this change, the Claimant Count has been expanded to include people claiming Jobseeker's Allowance plus those who claim Universal Credit and who are searching for work.**

Gloucestershire is in the process of transitioning to full Universal Credit. This means a broader span of claimants will be required to look for work than previously under Jobseekers Allowance. As more people are brought within the coverage of Universal Credit, the Claimant Count is set to rise noticeably over time. This will happen irrespective of how the economy performs and is a feature of the design of Universal Credit which brings additional groups of people into 'Searching for Work' conditionality (and therefore the Claimant Count), to help encourage and support these claimants into work.

For more information about Universal Credit please see the [ONS website](#).

INTRODUCTION

The Unemployment Bulletin provides a monthly update on unemployment data for Gloucestershire, the South West region and the United Kingdom. It is produced by the Data & Analysis Team in the County Council's Planning, Performance and Change function. The data are sourced from the Office for National Statistics via Nomis (www.nomis.co.uk). All data are rounded to the nearest 5 and may not precisely add to the sum of the number of people claiming JSA, and the number of people claiming Universal Credit required to seek work, due to independent rounding.

PART 1: SUMMARY

The claimant rate in Gloucestershire was 1.4% in June 2018. The South West rate decreased to 1.5% while the UK rate stayed the same at 2.2%. Gloucestershire's rate was 0.1% lower than the South West average of 1.5%, and 0.8% lower than the UK average of 2.2%.

The claimant count in Gloucestershire in June 2018 increased by 225 people. The amount of people claiming in June 2018 was 4.5% higher than the number in May 2018. This compares to a 1.0% decrease in the South West and a 0.8% decrease for the UK.

Produced by:

Data & Analysis Team
Planning, Performance and Change
Gloucestershire County Council
July 2018

DISTRICTS AT A GLANCE

At a glance unemployment information grouped by district. Includes:

Claim count: Total number of people claiming Job Seekers Allowance and Universal Credit who are not in work in June 2018

Compared to last month: How much larger/smaller June's claimant count is compared to May expressed as a %

Claimant rate: The % of working age population claiming Job Seekers Allowance and Universal Credit who are not in work in June 2018

Highest claiming ward: The ward with the highest claim count in that district and the rate

CHELTEMHAM BOROUGH

Claim count:	1,025
Compared to last month:	4.6%
Claimant rate:	1.4%
Highest claiming ward	Hesters Way (2.9%), and Oakley (2.9%)

GLOUCESTER CITY

Claim count:	1,490
Compared to last month:	6.0%
Claimant rate:	1.8%
Highest claiming wards	Westgate (3.7%)

COTSWOLD DISTRICT

Claim count:	490
Compared to last month:	5.4%
Claimant rate:	1.0%
Highest claiming ward	Watermoor (3.0%)

STROUD DISTRICT

Claim count:	790
Compared to last month:	2.6%
Claimant rate:	1.1%
Highest claiming wards	Slade (3.6%)

FOREST OF DEAN

Claim count:	865
Compared to last month:	3.6%
Claimant rate:	1.7%
Highest claiming ward	Lydney East (3.6%)

TEWKESBURY BOROUGH

Claim count:	595
Compared to last month:	4.4%
Claimant rate:	1.1%
Highest claiming ward	Tewkesbury Prior's Park (3.0%)

PART 2: UK, SW AND GLOUCESTERSHIRE INDICATORS

The unemployment situation in Gloucestershire compared to the South West and the UK.

Claimant Rate

Figure 1: Claimant Rate for Gloucestershire, the South West and UK over the past year

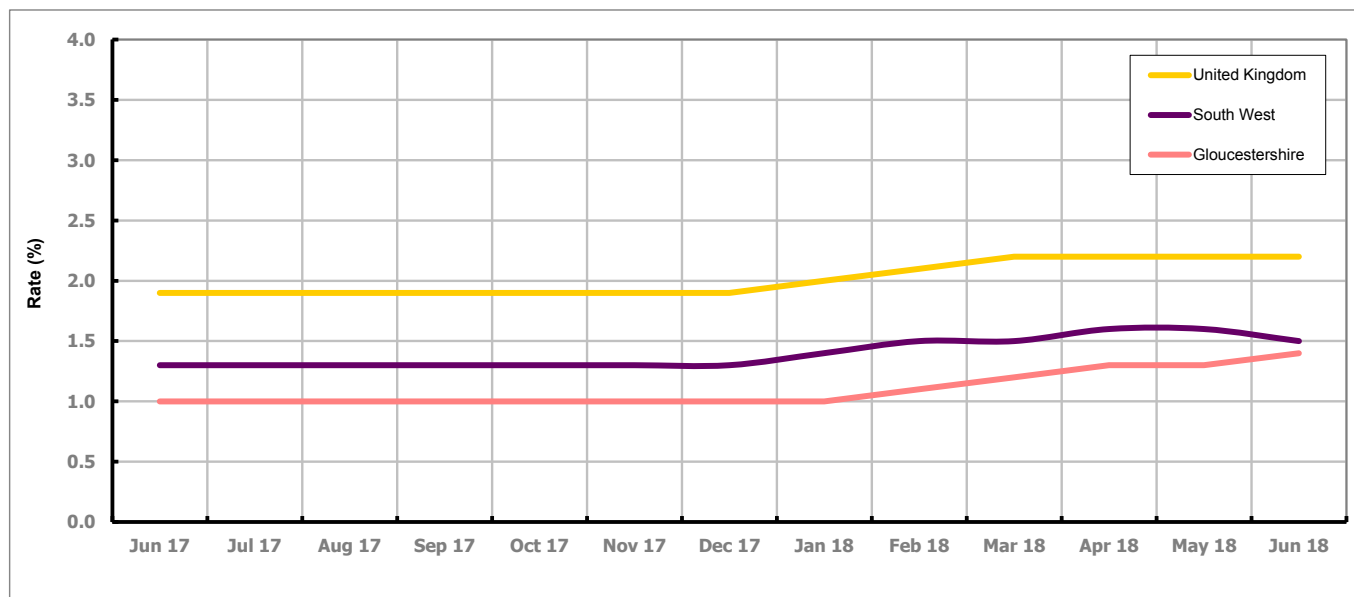


Figure 1 shows the claimant rate for Gloucestershire at 1.4% in June 2018. The Gloucestershire rate has been lower than the South West average since December 2015, with the exception of April and May 2016 when it was the same. It has been persistently lower by approximately 0.9% against the UK average.

Claimant Count

Table 1: Analysis of UK, South West and Gloucestershire Claimant Counts

Area	Claimant Count in June 2018	% change on May 2018	Consecutive months increasing
UK	899,955	-0.8%	0
South West	52,135	-1.0%	0
Gloucestershire	5,255	4.5%	6

Table 1 shows that in June 2018, the number of claimants in Gloucestershire was 4.5% higher than the number in May 2018.

PART 3: LOCAL AUTHORITY DISTRICT ANALYSIS

Claimant Rate and Claimant Count

Figure 2: Claimant Rate (%) across Gloucestershire - June 2018

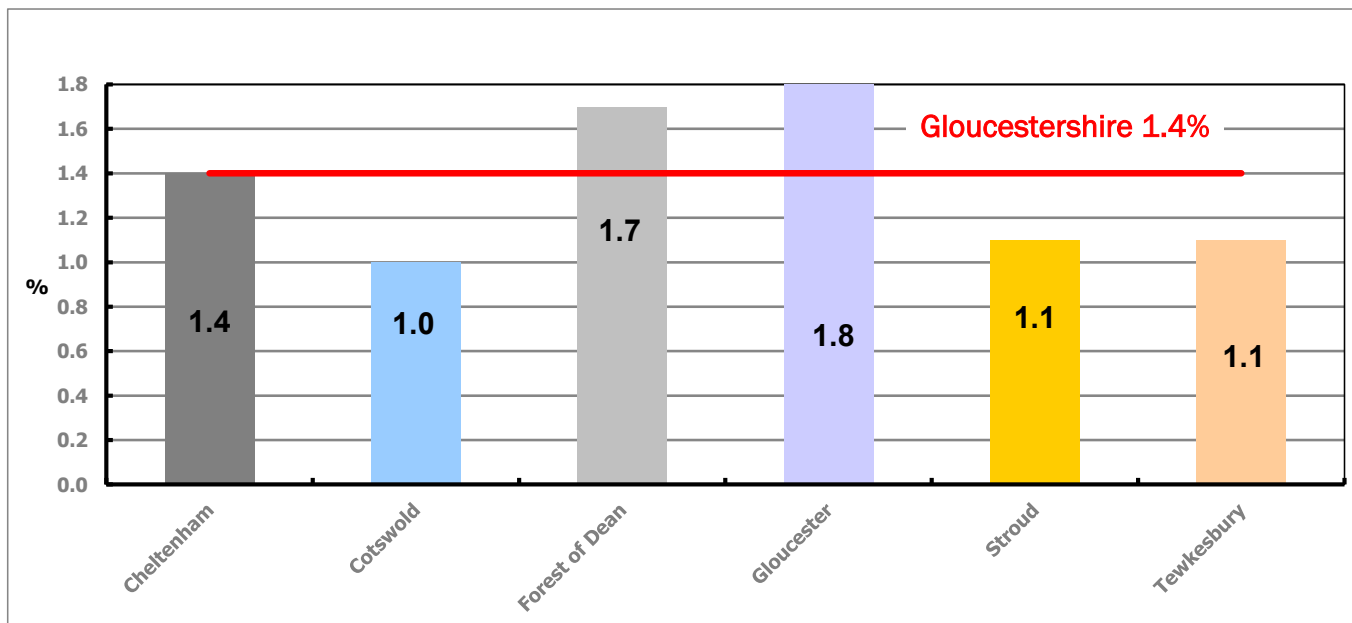


Figure 2 shows the claimant rate for June 2018 in Gloucestershire. Between May 2018 and June 2018, the rate stayed the same in Stroud and Tewkesbury, while all other districts saw an increase.

Table 2: Analysis of Gloucestershire and District Claimant Counts

Total	Jun 18 Number	Jun 18 Rate	May 18 Number	May 18 Rate	Monthly change	% monthly change	Monthly change of rate
Gloucestershire	5,255	1.4	5,030	1.3	225	4.5%	0.1
Cheltenham	1,025	1.4	980	1.3	45	4.6%	0.1
Cotswold	490	1.0	465	0.9	25	5.4%	0.1
Forest of Dean	865	1.7	835	1.6	30	3.6%	0.1
Gloucester	1,490	1.8	1,405	1.7	85	6.0%	0.1
Stroud	790	1.1	770	1.1	20	2.6%	0.0
Tewkesbury	595	1.1	570	1.1	25	4.4%	0.0

Table 2 shows the change in the claimant count in June 2018 compared to May 2018. All districts saw an increase in the number of claimants.

Table 3: Analysis of Male Gloucestershire and District Claimant Counts

Male	Jun 18 Number	Jun 18 Rate	May 18 Number	May 18 Rate	Monthly change	% monthly change	Monthly change of rate
Gloucestershire	3,170	1.7	3,055	1.6	115	3.8%	0.1
Cheltenham	640	1.7	605	1.6	35	5.8%	0.1
Cotswold	290	1.1	280	1.1	10	3.6%	0.0
Forest of Dean	495	1.9	470	1.9	25	5.3%	0.0
Gloucester	935	2.3	895	2.2	40	4.5%	0.1
Stroud	470	1.3	465	1.3	5	1.1%	0.0
Tewkesbury	345	1.3	335	1.3	10	3.0%	0.0

Table 3 shows the change in the male claimant count in June 2018 compared to May 2018. All districts saw an increase in the number of male claimants.

Table 4: Analysis of Female Gloucestershire and District Claimant Counts

Female	Jun 18 Number	Jun 18 Rate	May 18 Number	May 18 Rate	Monthly change	% monthly change	Monthly change of rate
Gloucestershire	2,085	1.1	1,975	1.0	110	5.6%	0.1
Cheltenham	390	1.0	375	1.0	15	4.0%	0.0
Cotswold	200	0.8	185	0.7	15	8.1%	0.1
Forest of Dean	370	1.4	365	1.4	5	1.4%	0.0
Gloucester	555	1.4	510	1.2	45	8.8%	0.2
Stroud	320	0.9	310	0.9	10	3.2%	0.0
Tewkesbury	250	0.9	230	0.8	20	8.7%	0.1

Table 4 shows the change in the female claimant count in June 2018 compared to May 2018. All districts saw an increase in the number of female claimants.

PART 4: LOCAL AUTHORITY DISTRICT AND WARD ANALYSIS

This section covers the six districts and a comparison of their constituent wards.

4.1 Cheltenham Borough

Claimant Rate and Claimant Count

Figure 3: Cheltenham Borough claimant rate over the last year

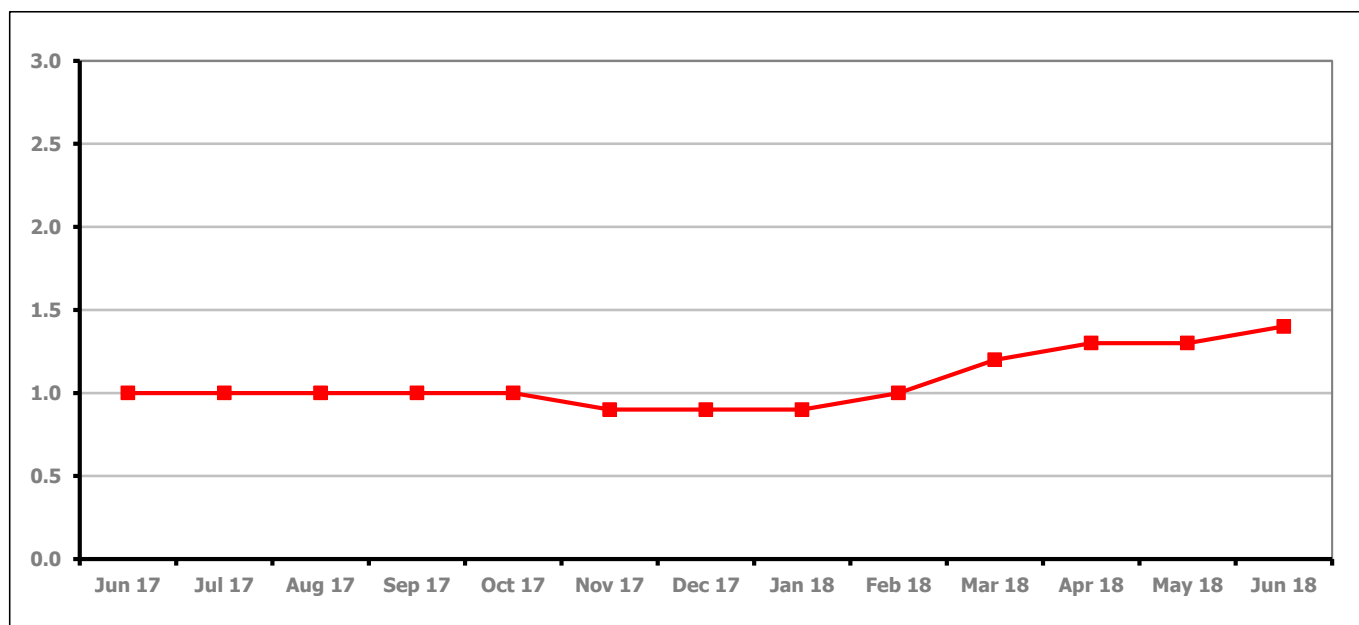


Figure 3 shows the claimant rate in Cheltenham has increased in June 2018 to 1.4%.

Figure 4: Claimant rates across Cheltenham Borough wards - June 2018

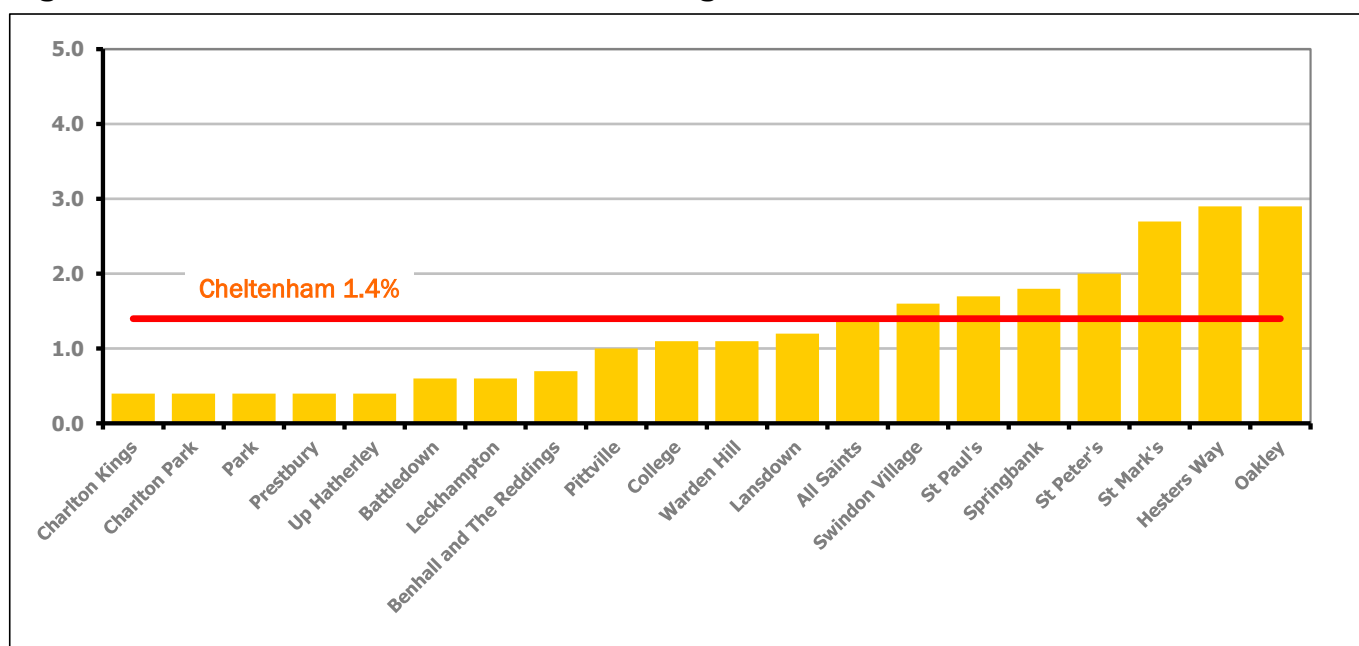


Figure 4 shows the claimant rates for Cheltenham Borough wards. The red line represents the average claimant rate across the Borough of 1.4%. Seven wards lie above the average.

PART 4: LOCAL AUTHORITY DISTRICT AND WARD ANALYSIS

4.1 Cheltenham Borough continued...

Table 5: Analysis of Claimant Count at Cheltenham Borough ward level - June 2018

District	Ward	Rate	Rank*
Cheltenham	Charlton Kings	0.4	5
Cheltenham	Charlton Park	0.4	5
Cheltenham	Park	0.4	5
Cheltenham	Prestbury	0.4	5
Cheltenham	Up Hatherley	0.4	5
Cheltenham	Battledown	0.6	23
Cheltenham	Leckhampton	0.6	23
Cheltenham	Benhall and The Reddings	0.7	31
Cheltenham	Pittville	1.0	69
Cheltenham	College	1.1	79
Cheltenham	Warden Hill	1.1	79
Cheltenham	Lansdown	1.2	86
Cheltenham	All Saints	1.4	98
Cheltenham	Swindon Village	1.6	110
Cheltenham	St Paul's	1.7	115
Cheltenham	Springbank	1.8	120
Cheltenham	St Peter's	2.0	126
Cheltenham	St Mark's	2.7	133
Cheltenham	Hesters Way	2.9	135
Cheltenham	Oakley	2.9	135

	lowest 10% of county
	first quartile of county
	second quartile of county
	third quartile of county
	fourth quartile of county
	highest 10% of county

* 1 = "best" and 142 = "worst"

Table 5 shows overall claimant rates for Cheltenham Borough wards and their position relative to all wards in Gloucestershire.

PART 4: LOCAL AUTHORITY DISTRICT AND WARD ANALYSIS

4.2 Cotswold District

Claimant Rate and Claimant Count

Figure 5: Cotswold District claimant rate over the last year

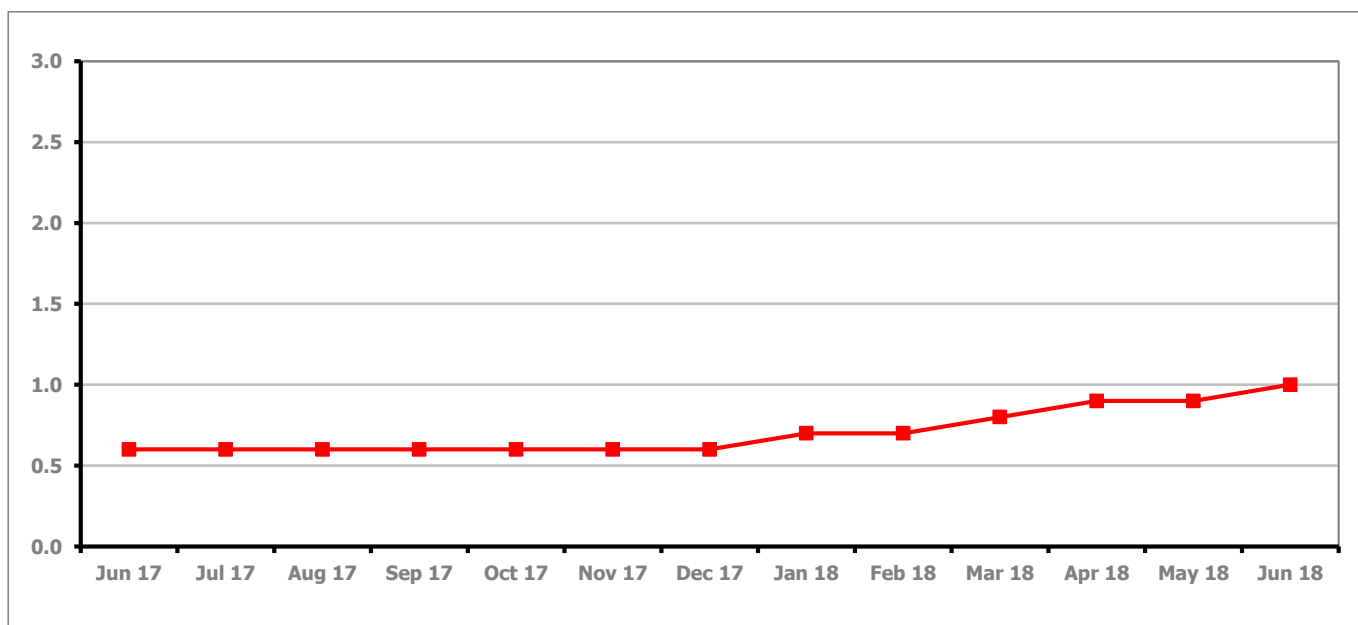


Figure 5 shows the claimant rate in Cotswold District has increased in June 2018 to 1.0%.

Figure 6: Claimant rates across Cotswold District wards - June 2018

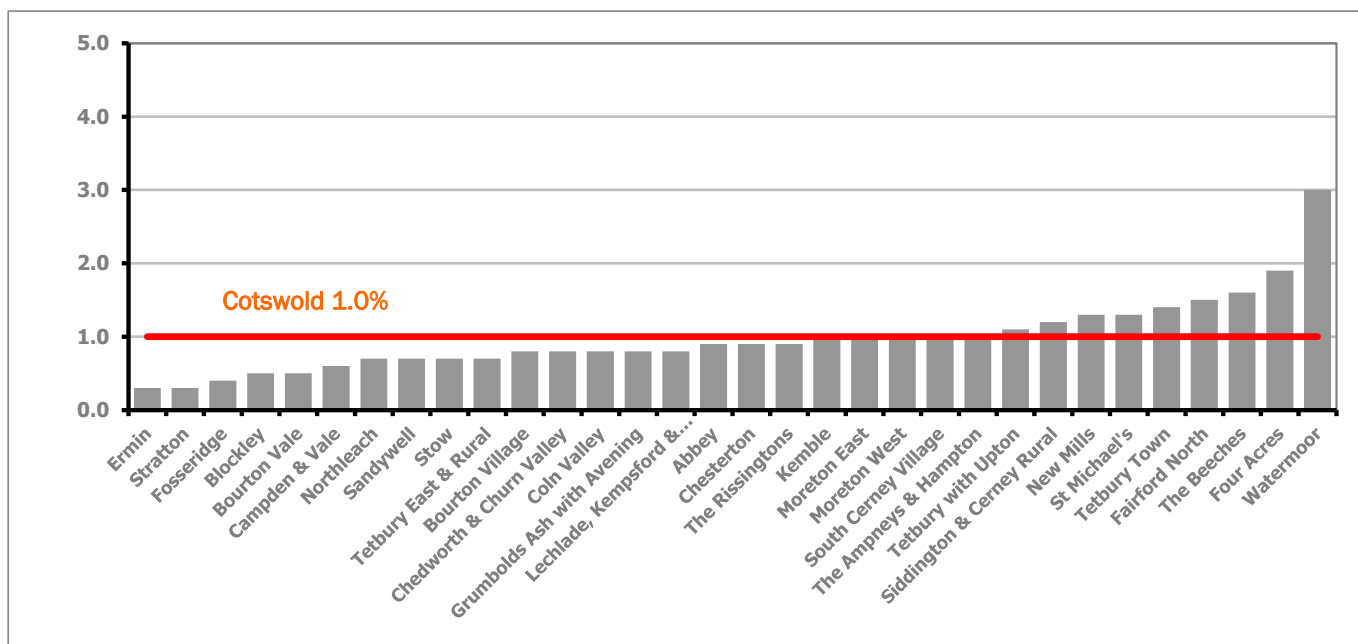


Figure 6 shows the claimant rates for Cotswold District wards. The red line represents the average claimant rate across the District of 1.0%. Nine wards lie above the average.

PART 4: LOCAL AUTHORITY DISTRICT AND WARD ANALYSIS

4.2 Cotswold District continued...

Table 6: Analysis of Claimant Count at Cotswold District ward level - June 2018

District	Ward	Rate	Rank*
Cotswolds	Ermin	0.3	1
Cotswolds	Stratton	0.3	1
Cotswolds	Fosseridge	0.4	5
Cotswolds	Blockley	0.5	19
Cotswolds	Bourton Vale	0.5	19
Cotswolds	Campden & Vale	0.6	23
Cotswolds	Northleach	0.7	31
Cotswolds	Sandywell	0.7	31
Cotswolds	Stow	0.7	31
Cotswolds	Tetbury East & Rural	0.7	31
Cotswolds	Bourton Village	0.8	42
Cotswolds	Chedworth & Churn Valley	0.8	42
Cotswolds	Coln Valley	0.8	42
Cotswolds	Grumbolds Ash with Avening	0.8	42
Cotswolds	Lechlade, Kempsford & Fairford South	0.8	42
Cotswolds	Abbey	0.9	60
Cotswolds	Chesterton	0.9	60
Cotswolds	The Rissingtons	0.9	60
Cotswolds	Kemble	1.0	69
Cotswolds	Moreton East	1.0	69
Cotswolds	Moreton West	1.0	69
Cotswolds	South Cerney Village	1.0	69
Cotswolds	The Ampneys & Hampton	1.0	69
Cotswolds	Tetbury with Upton	1.1	79
Cotswolds	Siddington & Cerney Rural	1.2	86
Cotswolds	New Mills	1.3	92
Cotswolds	St Michael's	1.3	92
Cotswolds	Tetbury Town	1.4	98
Cotswolds	Fairford North	1.5	104
Cotswolds	The Beeches	1.6	110
Cotswolds	Four Acres	1.9	124
Cotswolds	Watermoor	3.0	137

	lowest 10% of county
	first quartile of county
	second quartile of county
	third quartile of county
	fourth quartile of county
	highest 10% of county

* 1 = "best" and 142 = "worst"

Table 6 shows overall claimant rates for Cotswold District wards and their position relative to all wards in Gloucestershire.

PART 4: LOCAL AUTHORITY DISTRICT AND WARD ANALYSIS

4.3 Forest of Dean District

Claimant Rate and Claimant Count

Figure 7: Forest of Dean District claimant rate over the last year

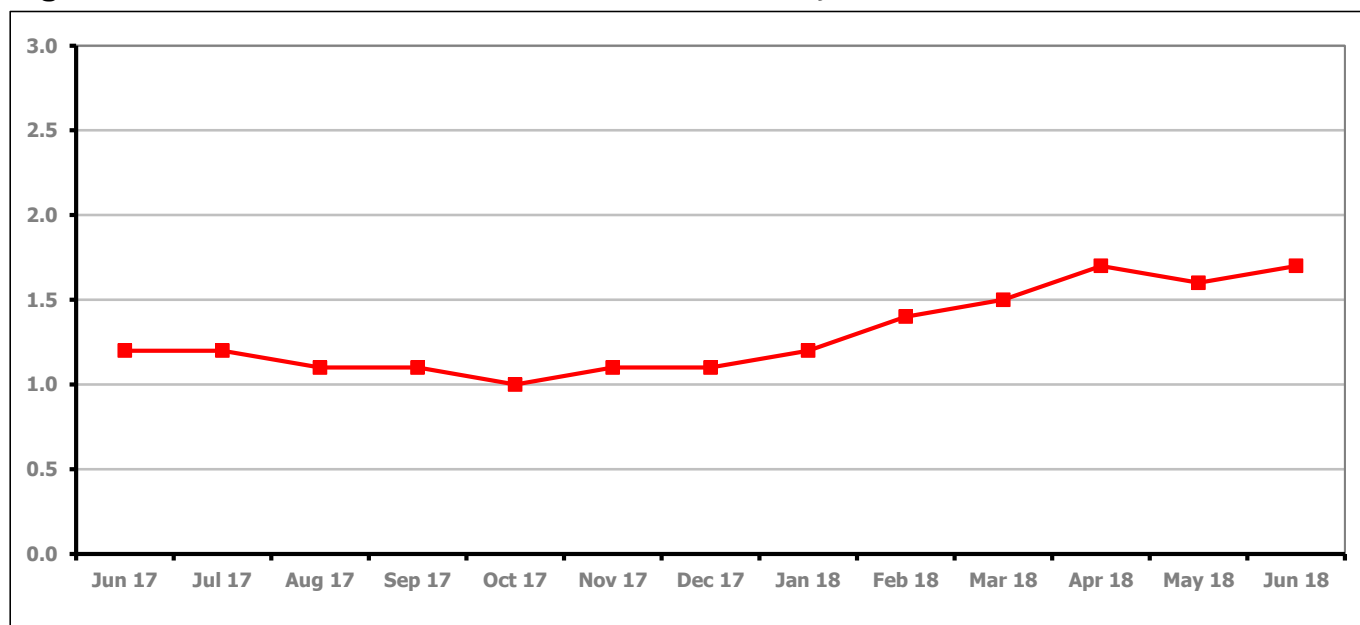


Figure 7 shows the claimant rate in the Forest of Dean has increased in June 2018 to 1.7%.

Figure 8: Claimant rates across Forest of Dean District wards - June 2018

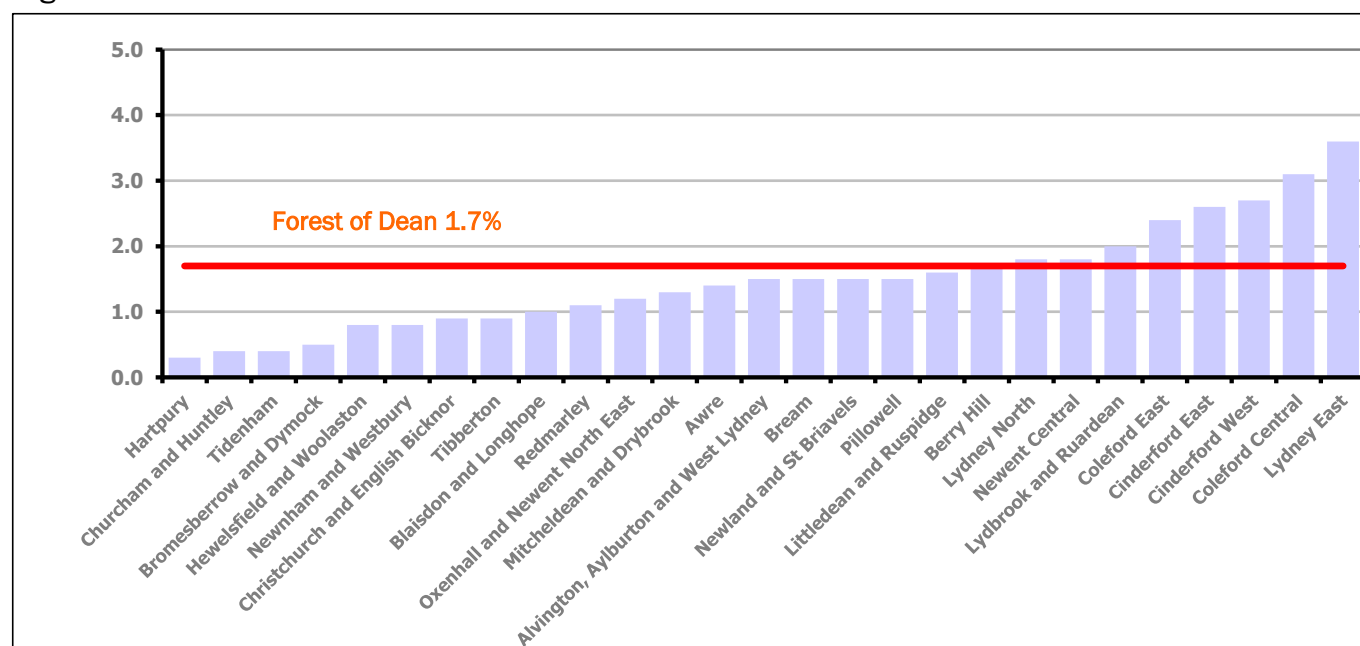


Figure 8 shows the claimant rates for the Forest of Dean District wards. The red line represents the average claimant rate across the District of 1.7%. Eight wards lie above the average.

PART 4: LOCAL AUTHORITY DISTRICT AND WARD ANALYSIS

4.3 Forest of Dean District continued...

Table 7: Analysis of Claimant Count at Forest of Dean District ward level - June 2018

District	Ward	Rate	Rank*
Forest	Hartpury	0.3	1
Forest	Churcham and Huntley	0.4	5
Forest	Tidenham	0.4	5
Forest	Bromesberrow and Dymock	0.5	19
Forest	Hewelsfield and Woolaston	0.8	42
Forest	Newnham and Westbury	0.8	42
Forest	Christchurch and English Bicknor	0.9	60
Forest	Tibberton	0.9	60
Forest	Blaisdon and Longhope	1.0	69
Forest	Redmarley	1.1	79
Forest	Oxenhall and Newent North East	1.2	86
Forest	Mitcheldean and Drybrook	1.3	92
Forest	Awre	1.4	98
Forest	Alvington, Aylburton and West Lydney	1.5	104
Forest	Bream	1.5	104
Forest	Newland and St Briavels	1.5	104
Forest	Pillowell	1.5	104
Forest	Littledean and Ruspidge	1.6	110
Forest	Berry Hill	1.7	115
Forest	Lydney North	1.8	120
Forest	Newent Central	1.8	120
Forest	Lydbrook and Ruardean	2.0	126
Forest	Coleford East	2.4	130
Forest	Cinderford East	2.6	132
Forest	Cinderford West	2.7	133
Forest	Coleford Central	3.1	140
Forest	Lydney East	3.6	143

	lowest 10% of county
	first quartile of county
	second quartile of county
	third quartile of county
	fourth quartile of county
	highest 10% of county

* 1 = "best" and 142 = "worst"

Table 7 shows overall claimant rates for the Forest of Dean District wards and their position relative to all wards in Gloucestershire.

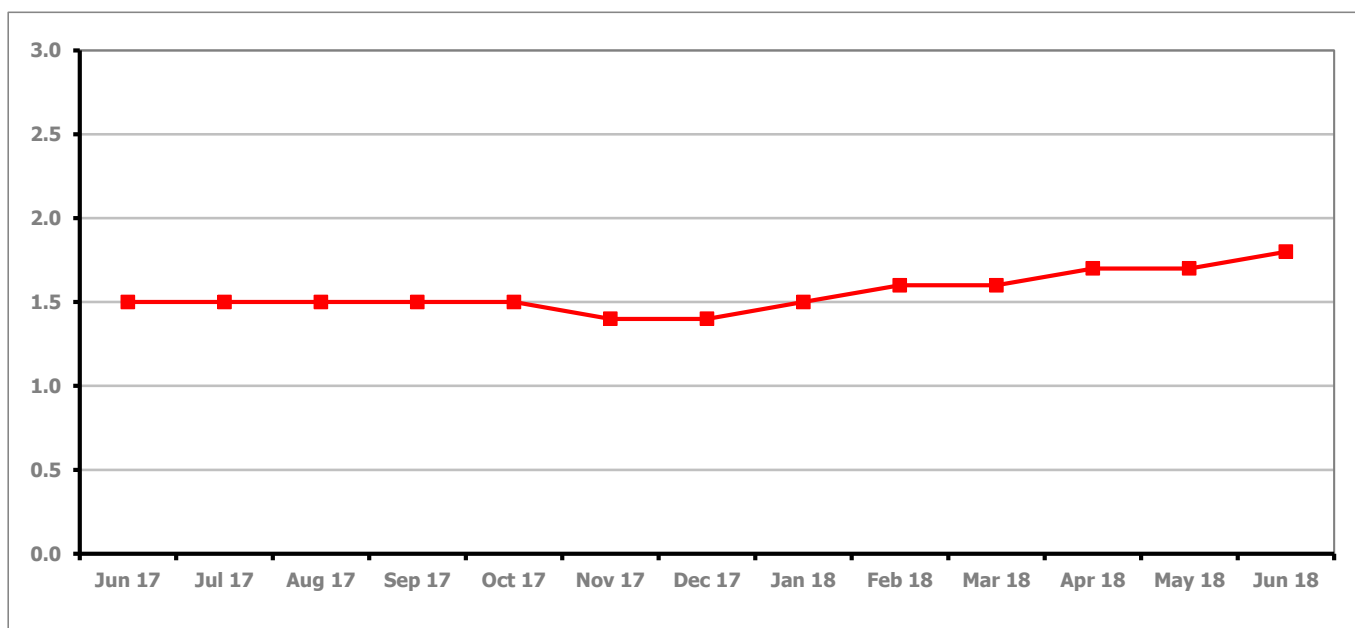
PART 4: LOCAL AUTHORITY DISTRICT AND WARD ANALYSIS**4.4 Gloucester City****Claimant Rate and Claimant Count***Figure 9: Gloucester City claimant rate over the last year*

Figure 9 shows the claimant rate for Gloucester City has increased in June 2018 to 1.8%.

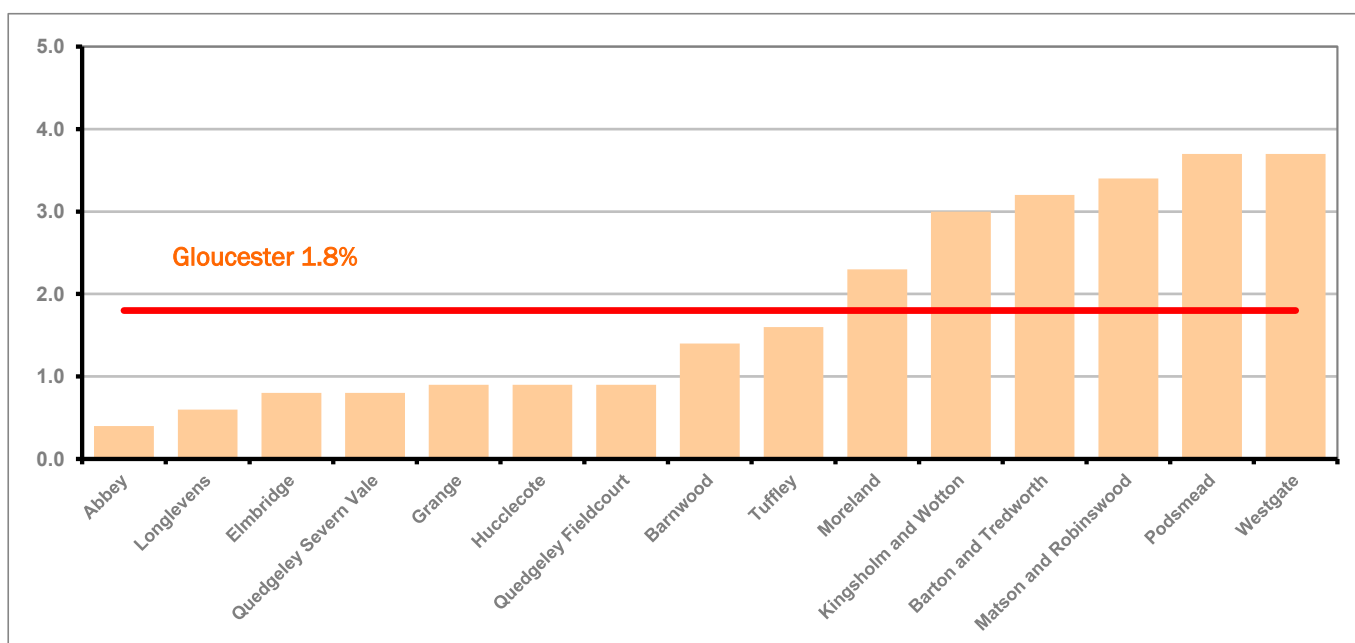
Figure 10: Claimant rates across Gloucester City wards - June 2018






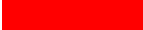
Figure 10 shows the claimant rates for Gloucester City district wards. The red line represents the average claimant rate across the City of 1.8%. Six wards lie above the average.

PART 4: LOCAL AUTHORITY DISTRICT AND WARD ANALYSIS

4.4 Gloucester City continued...

Table 8: Analysis of Claimant Count at Gloucester City ward level - June 2018

District	Ward	Rate	Rank*
Gloucester	Abbey	0.4	5
Gloucester	Longlevens	0.6	23
Gloucester	Elmbridge	0.8	42
Gloucester	Quedgeley Severn Vale	0.8	42
Gloucester	Grange	0.9	60
Gloucester	Hucclecote	0.9	60
Gloucester	Quedgeley Fieldcourt	0.9	60
Gloucester	Barnwood	1.4	98
Gloucester	Tuffley	1.6	110
Gloucester	Moreland	2.3	128
Gloucester	Kingsholm and Wotton	3.0	137
Gloucester	Barton and Tredworth	3.2	141
Gloucester	Matson and Robinswood	3.4	142
Gloucester	Podsmead	3.7	145
Gloucester	Westgate	3.7	145

	lowest 10% of county
	first quartile of county
	second quartile of county
	third quartile of county
	fourth quartile of county
	highest 10% of county

* 1 = "best" and 142 = "worst"

Table 8 shows overall claimant rates for Gloucester City wards and their position relative to all wards in Gloucestershire.

PART 4: LOCAL AUTHORITY DISTRICT AND WARD ANALYSIS

4.5 Stroud District

Claimant Rate and Claimant Count

Figure 11: Stroud District claimant rate over the last year

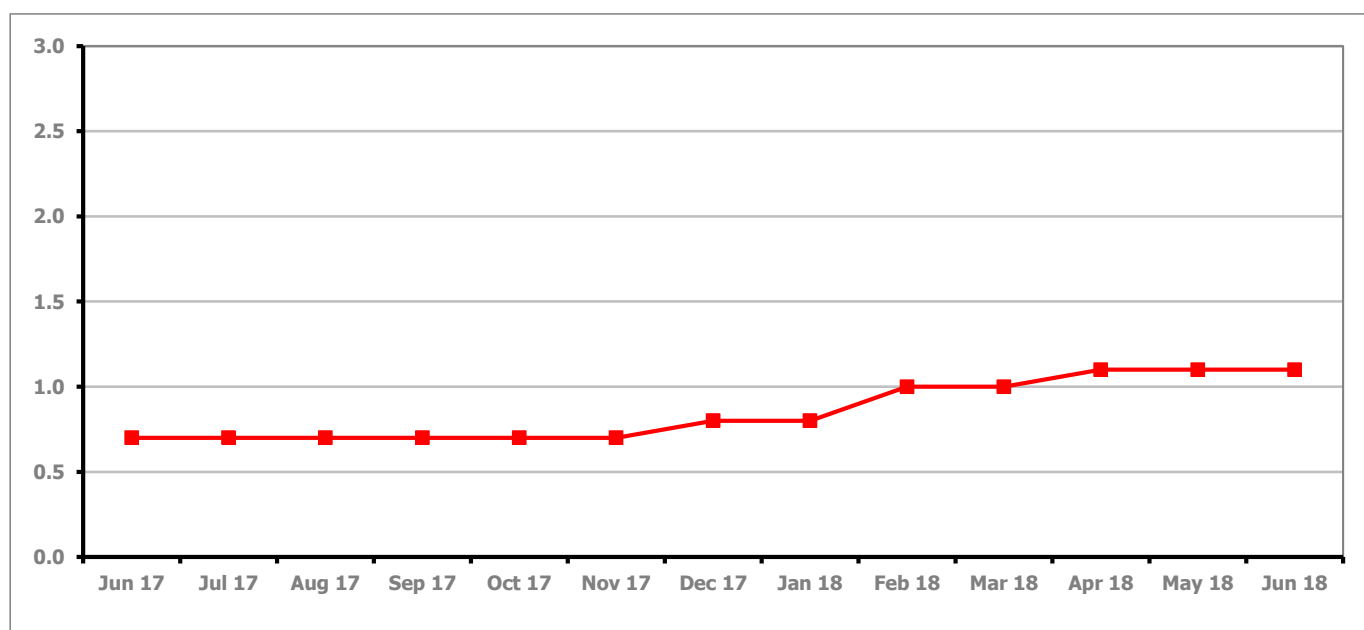


Figure 11 shows the claimant rate for Stroud stayed the same as last month at 1.1%.

Figure 12: Claimant rates across Stroud District wards - June 2018

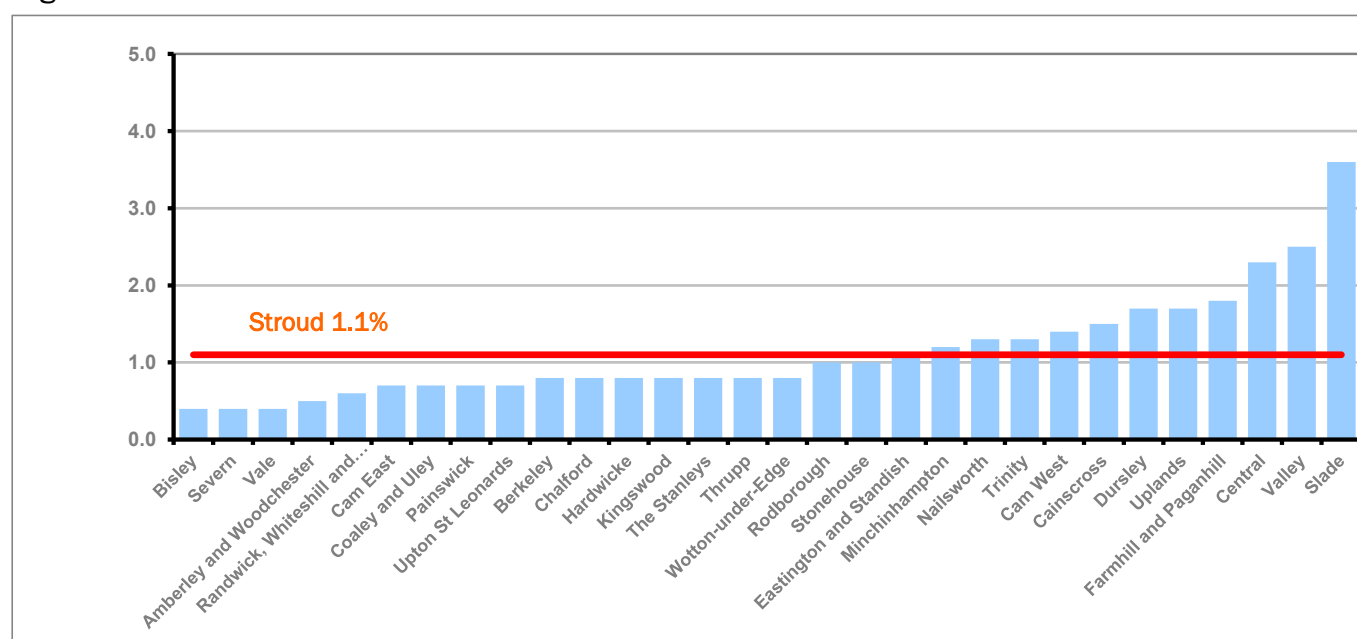


Figure 12 shows the claimant rates in Stroud District wards. The red line represents the average claimant rate across the District of 1.1%. Eleven wards are above the average.

PART 4: LOCAL AUTHORITY AND DISTRICT ANALYSIS

4.5 Stroud District continued...

Table 9: Analysis of Claimant Count at Stroud District ward level - June 2018

District	Ward	Rate	Rank*
Stroud	Bisley	0.4	5
Stroud	Severn	0.4	5
Stroud	Vale	0.4	5
Stroud	Amberley and Woodchester	0.5	19
Stroud	Randwick, Whiteshill and Ruscombe	0.6	23
Stroud	Cam East	0.7	31
Stroud	Coaley and Uley	0.7	31
Stroud	Painswick	0.7	31
Stroud	Upton St Leonards	0.7	31
Stroud	Berkeley	0.8	42
Stroud	Chalford	0.8	42
Stroud	Hardwicke	0.8	42
Stroud	Kingswood	0.8	42
Stroud	The Stanleys	0.8	42
Stroud	Thrupp	0.8	42
Stroud	Wotton-under-Edge	0.8	42
Stroud	Rodborough	1.0	69
Stroud	Stonehouse	1.0	69
Stroud	Eastington and Standish	1.1	79
Stroud	Minchinhampton	1.2	86
Stroud	Nailsworth	1.3	92
Stroud	Trinity	1.3	92
Stroud	Cam West	1.4	98
Stroud	Cainscross	1.5	104
Stroud	Dursley	1.7	115
Stroud	Uplands	1.7	115
Stroud	Farmhill and Paganhill	1.8	120
Stroud	Central	2.3	128
Stroud	Valley	2.5	131
Stroud	Slade	3.6	143

	lowest 10% of county
	first quartile of county
	second quartile of county
	third quartile of county
	fourth quartile of county
	highest 10% of county

* 1 = "best" and 142 = "worst"

Table 9 shows overall claimant rates for Stroud District wards and their position relative to all wards in Gloucestershire.

PART 4: LOCAL AUTHORITY DISTRICT AND WARD ANALYSIS

4.6 Tewkesbury District

Claimant Rate and Claimant Count

Figure 13: Tewkesbury District claimant rate over the last year

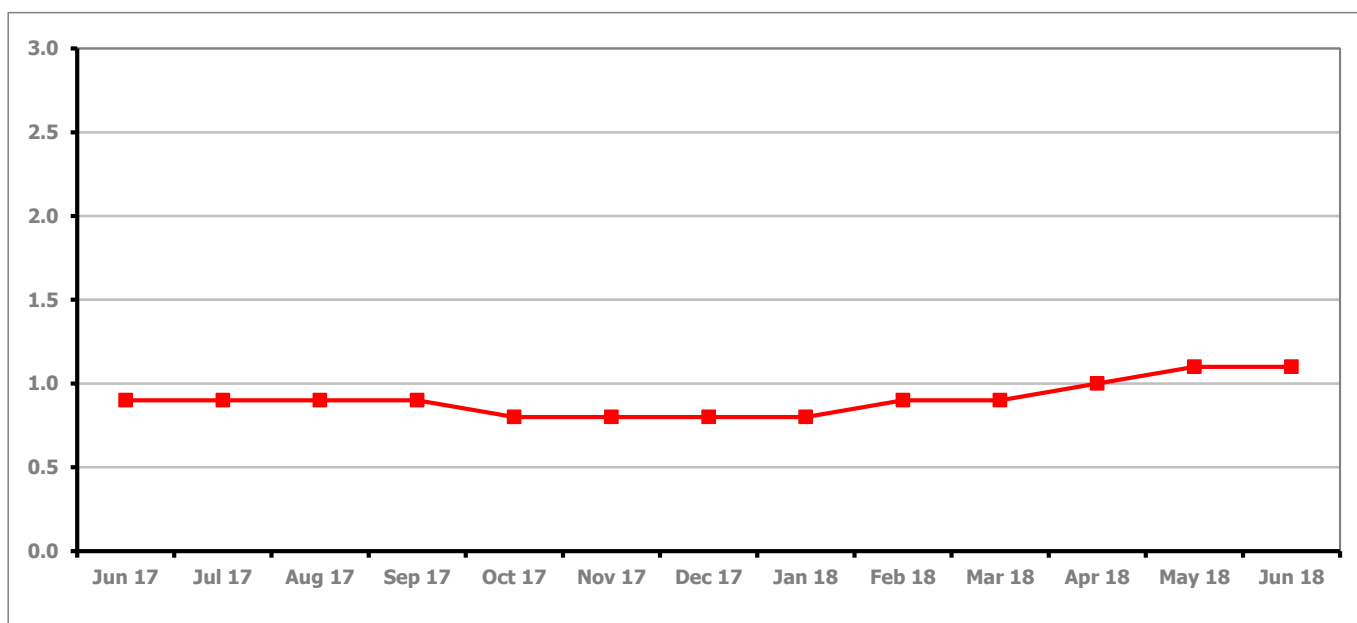


Figure 13 shows the claimant rate for Tewkesbury District stayed the same as last month at 1.1%.

Figure 14: Claimant rates across Tewkesbury District wards - June 2018

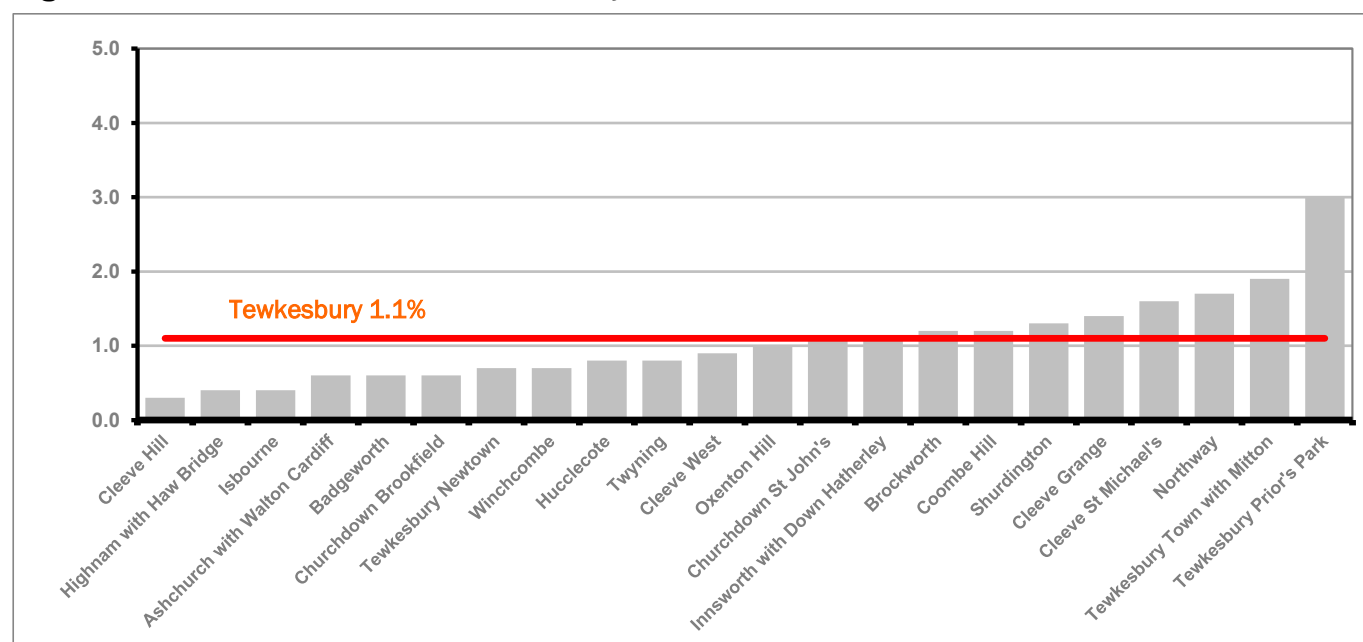


Figure 14 shows the claimant rates in Tewkesbury District wards. The red line represents the average claimant rate across the District of 1.1%. Eight wards are above the average.

PART 4: LOCAL AUTHORITY AND DISTRICT ANALYSIS

4.6 Tewkesbury District continued...

Table 10: Analysis of Claimant Count at Tewkesbury District level - June 2018

District	Ward	Rate	Rank*
Tewkesbury	Cleeve Hill	0.3	1
Tewkesbury	Highnam with Haw Bridge	0.4	5
Tewkesbury	Isbourne	0.4	5
Tewkesbury	Ashchurch with Walton Cardiff	0.6	23
Tewkesbury	Badgeworth	0.6	23
Tewkesbury	Churchdown Brookfield	0.6	23
Tewkesbury	Tewkesbury Newtown	0.7	31
Tewkesbury	Winchcombe	0.7	31
Tewkesbury	Hucclecote	0.8	42
Tewkesbury	Twynning	0.8	42
Tewkesbury	Cleeve West	0.9	60
Tewkesbury	Oxenton Hill	1.0	69
Tewkesbury	Churchdown St John's	1.1	79
Tewkesbury	Innsworth with Down Hatherley	1.1	79
Tewkesbury	Brockworth	1.2	86
Tewkesbury	Coombe Hill	1.2	86
Tewkesbury	Shurdington	1.3	92
Tewkesbury	Cleeve Grange	1.4	98
Tewkesbury	Cleeve St Michael's	1.6	110
Tewkesbury	Northway	1.7	115
Tewkesbury	Tewkesbury Town with Mitton	1.9	124
Tewkesbury	Tewkesbury Prior's Park	3.0	137

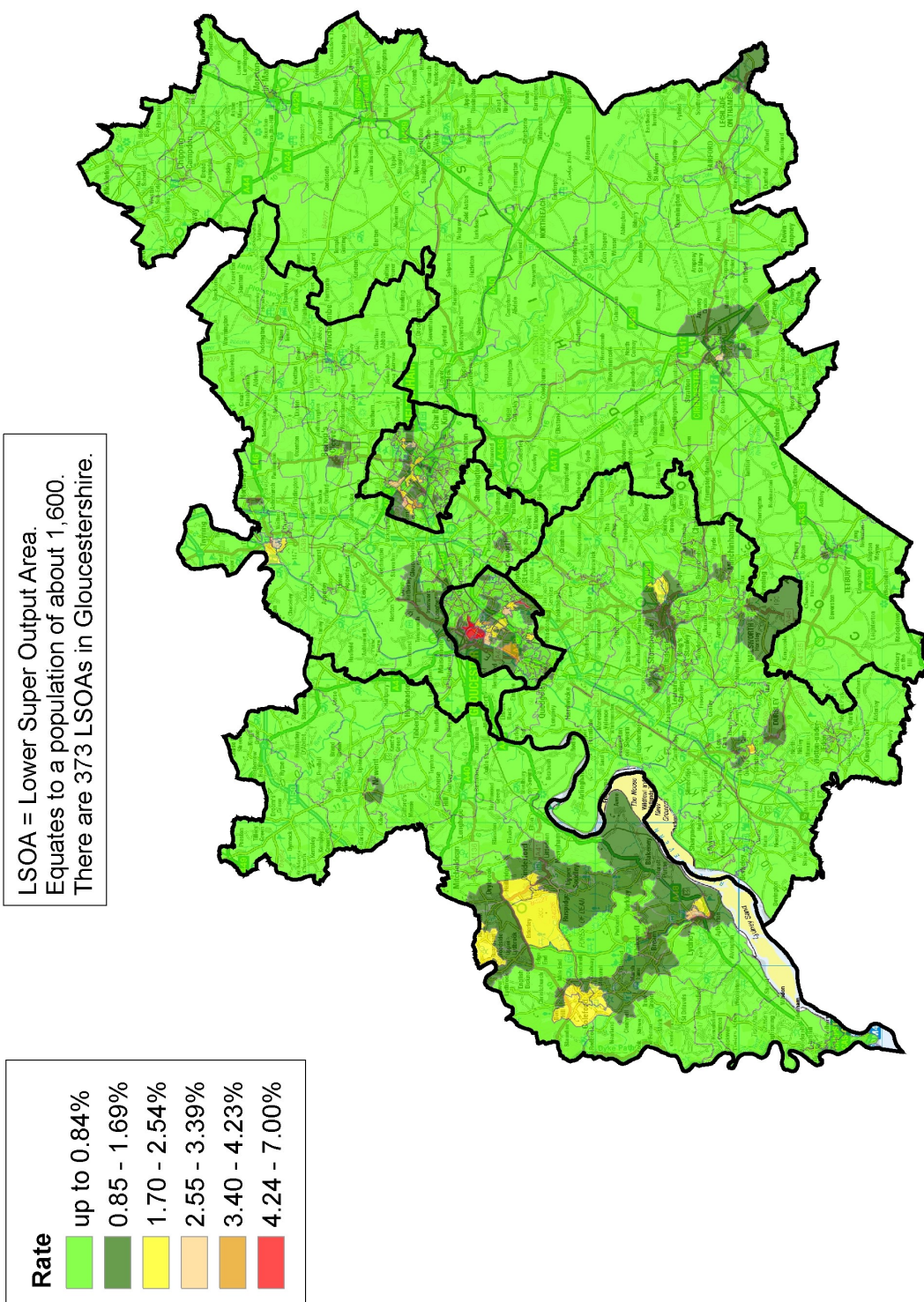
	lowest 10% of county
	first quartile of county
	second quartile of county
	third quartile of county
	fourth quartile of county
	highest 10% of county

* 1 = "best" and 142 = "worst"

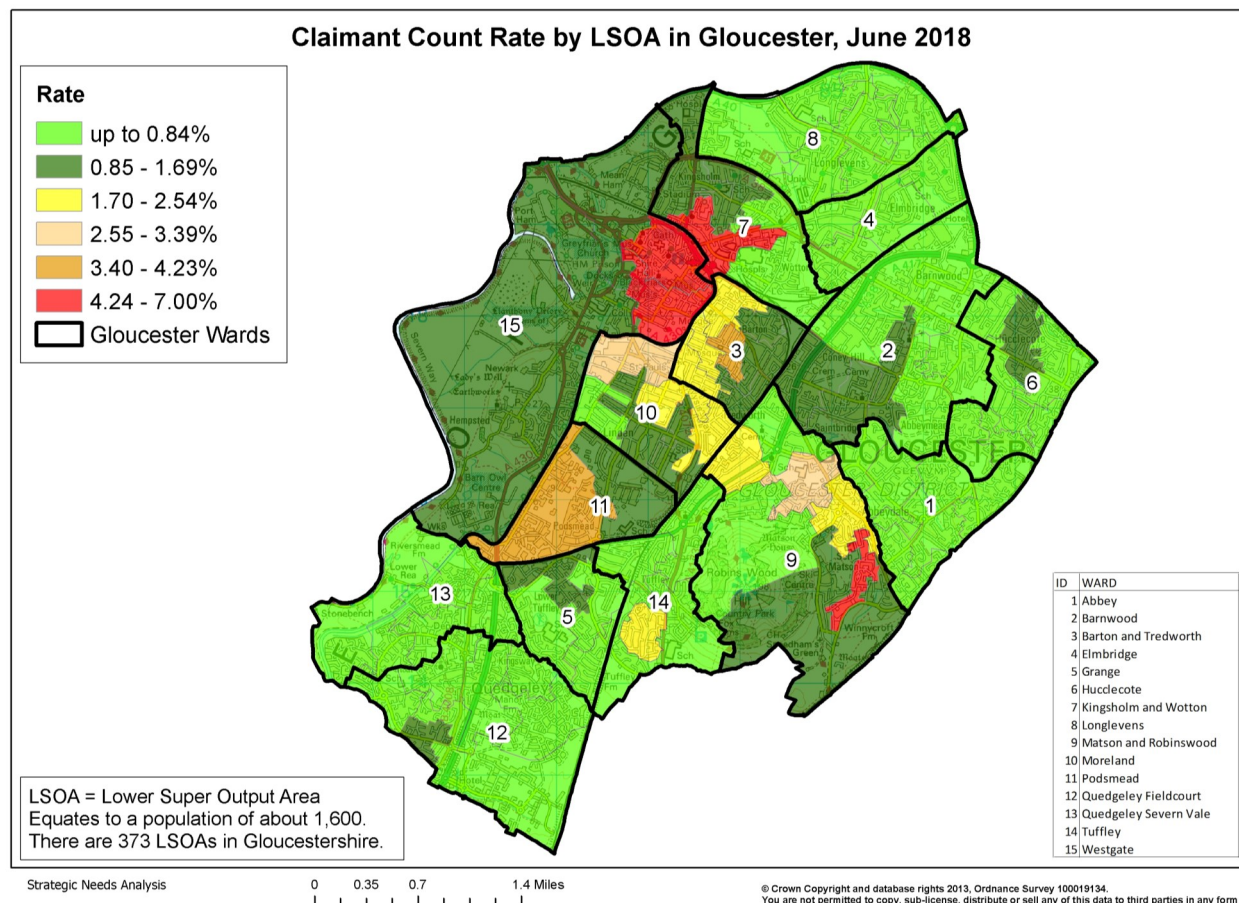
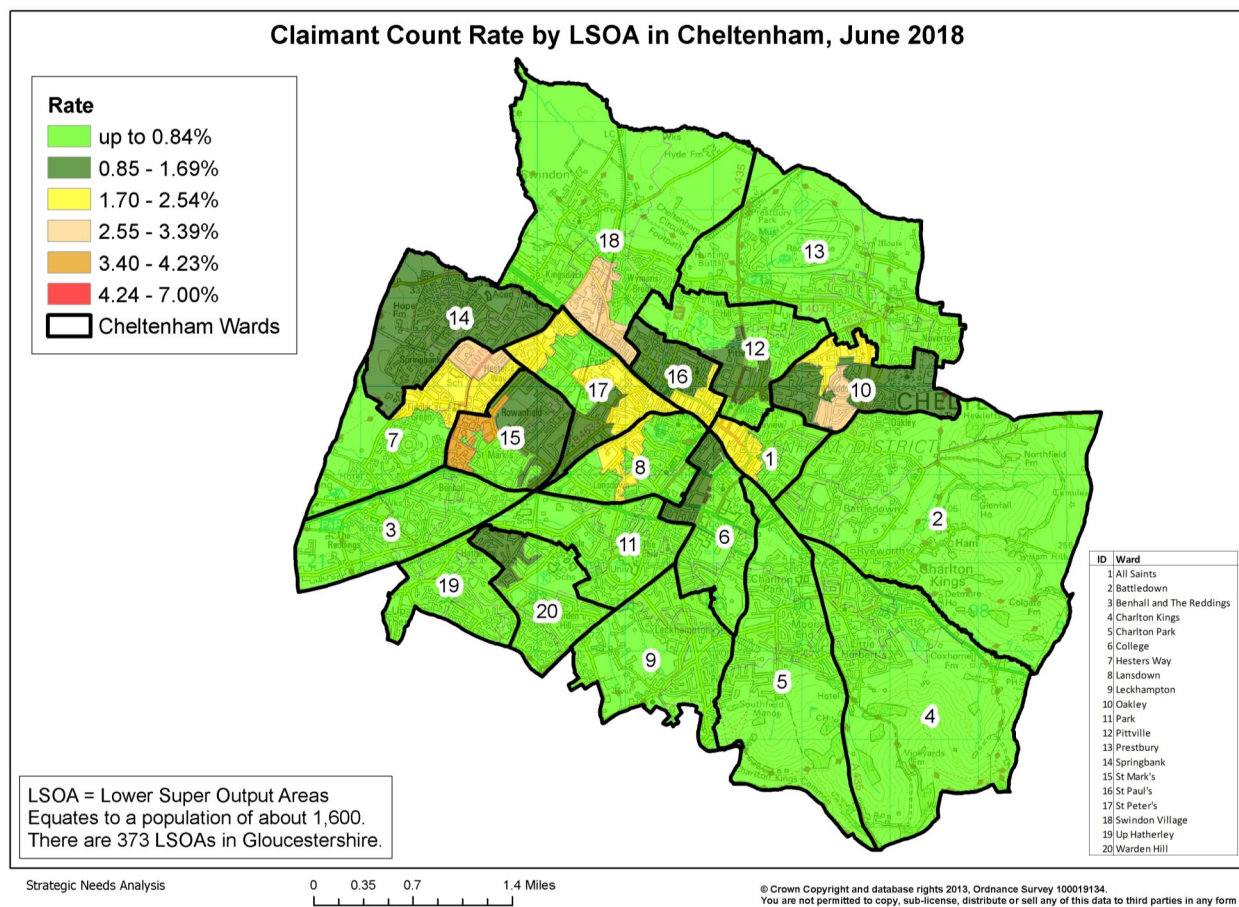
Table 10 shows overall claimant rates for Tewkesbury District wards and their position relative to all wards in Gloucestershire.

PART 5: MAP SHOWING DISTRIBUTION OF CLAIMANT RATE ACROSS GLOUCESTERSHIRE

Claimant Count Rate by LSOA in Gloucestershire, June 2018



PART 5: MAP SHOWING DISTRIBUTION OF CLAIMANT RATE ACROSS GLOUCESTERSHIRE



PART 6: YOUTH UNEMPLOYMENT(18-24 year olds)

Youth Claimant Rate and Claimant Count

Figure 15: Claimant Count for Gloucestershire over the past year

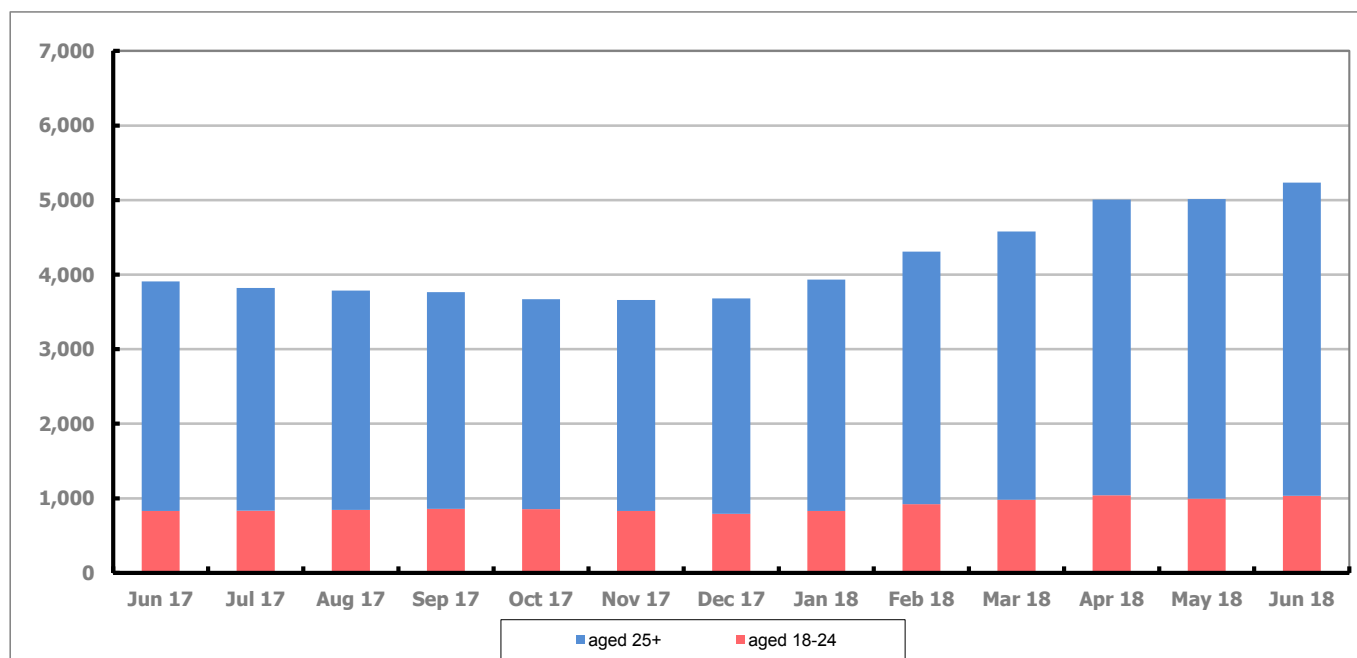


Figure 15 shows that in June 2018, 1,035 people aged 18-24 were claiming Job Seekers Allowance and Universal Credit who were not in work in Gloucestershire, this represents 19.7% of total working age claimants.

PART 7: YOUNG PEOPLE NOT IN EDUCATION, EMPLOYMENT OR TRAINING (NEET) IN GLOUCESTERSHIRE

Data provided by Gloucestershire Youth Support Team on the situation of young people (16-18) in Gloucestershire who are not in education, employment or formal training.

Gloucestershire Youth Support Team is required to report performance with the 16-18 age range against nationally defined criteria for counting the NEET group. The NEET group includes young people actively seeking education, employment or training as well as those young people who are either not yet ready or who are unable to access these opportunities because of their personal circumstances. The figures quoted below include young people in both of these categories.

Summary

At the end of June 2018 there were 339 young people aged 16-18 not in education, employment or training in Gloucestershire and this figure translates into an adjusted (*) 16-18 NEET population of 2.56%. The total number of NEET young people decreased by 6 in June 2018 compared to May 2018, two districts saw a decrease in their figures, two districts saw an increase and two districts stayed the same.

Total NEET Group by District Area

June 2018 NEET data

	Cheltenham	Cotswold	Forest	Gloucester	Stroud	Tewkesbury	Total
Total NEET	64	26	60	113	41	35	339
Cohort	2303	1865	1854	3195	2869	1932	14018
% NEET	2.78	1.39	3.24	3.54	1.43	1.81	2.56*

If you would like to receive any further information on Gloucestershire's NEET strategy then please contact Ruth.Critchlow@Prospects.co.uk or telephone 01452 426900.

(*) Adjustment includes a proportion of young people aged 16-18 whose outcomes are not known to Gloucestershire Youth Support Team.