

# Unemployment Bulletin

Issue 132 July 2019

## Contents

<b>Part 1: Summary</b> A summary of unemployment data at district, County, regional and national level	1
<b>Part 2: County</b> Unemployment figures for the County compared to the South West and the rest of the UK	3
<b>Part 3: Districts</b> A comparative break down of unemployment figures by district	4
<b>Part 4: Wards</b> Further breakdown of unemployment figures by ward:	
Cheltenham	6
Cotswolds	8
Forest of Dean	10
Gloucester	12
Stroud	14
Tewkesbury	16
<b>Part 5: Map</b> Distribution of claimant rate across Gloucestershire	18
<b>Part 6: Youth Unemployment</b> Unemployment data for the 18-24 year old age group	20
<b>Part 7: Young People</b> Data about Young People Not in Education, Employment or Training (NEET)	21

The Claimant Count is a measure of the number of people who are unemployed and claiming benefits. From 1996 until the recent introduction of Universal Credit, this was based on the number of people claiming Jobseeker's Allowance. However, since its introduction some unemployment benefit claimants will be claiming Universal Credit instead. **To reflect this change, the Claimant Count has been expanded to include people claiming Jobseeker's Allowance plus those who claim Universal Credit and who are searching for work.**

Gloucestershire is in the process of transitioning to full Universal Credit. This means a broader span of claimants will be required to look for work than previously under Jobseekers Allowance. As more people are brought within the coverage of Universal Credit, the Claimant Count is set to rise noticeably over time. This will happen irrespective of how the economy performs and is a feature of the design of Universal Credit which brings additional groups of people into 'Searching for Work' conditionality (and therefore the Claimant Count), to help encourage and support these claimants into work.

For more information about Universal Credit please see the [ONS website](https://www.ons.gov.uk/universal-credit).

## INTRODUCTION

The Unemployment Bulletin provides a monthly update on unemployment data for Gloucestershire, the South West region and the United Kingdom. It is produced by the Data & Analysis Team in the County Council's Planning, Performance and Change function. The data are sourced from the Office for National Statistics via Nomis ([www.nomis.co.uk](http://www.nomis.co.uk)). All data are rounded to the nearest 5 and may not precisely add to the sum of the number of people claiming JSA, and the number of people claiming Universal Credit required to seek work, due to independent rounding.

## PART 1: SUMMARY

**The claimant rate in Gloucestershire was 1.9% in July 2019.** The South West rate remained the same as last month at 2.0%, while the UK rate increased to 2.8%. Gloucestershire's rate was 0.1% lower than the South West average of 2.0%, and 0.9% lower than the UK average of 2.8%.

**The claimant count in Gloucestershire in July 2019 increased by 185 people.** The amount of people claiming in July 2019 was 2.6% higher than the number in June 2019. This compares to a 1.1% increase in the South West and a 1.9% increase for the UK.

Produced by:

**Data & Analysis Team**  
Planning, Performance and Change  
Gloucestershire County Council  
August 2019

## DISTRICTS AT A GLANCE

At a glance unemployment information grouped by district. Includes:

**Claim count:** Total number of people claiming Job Seekers Allowance and Universal Credit who are not in work in July 2019

**Compared to last month:** How much larger/smaller July's claimant count is compared to June expressed as a %

**Claimant rate:** The % of working age population claiming Job Seekers Allowance and Universal Credit who are not in work in July 2019

**Highest claiming ward:** The ward with the highest claim count in that district and the rate

### CHELTENHAM BOROUGH

Claim count:	1,395
Compared to last month:	2.6%
Claimant rate:	1.9%
Highest claiming ward	Hester's Way (4.3%)

### GLOUCESTER CITY

Claim count:	2,230
Compared to last month:	1.8%
Claimant rate:	2.7%
Highest claiming wards	Westgate (5.4%)

### COTSWOLD DISTRICT

Claim count:	655
Compared to last month:	2.3%
Claimant rate:	1.3%
Highest claiming ward	Watermoor (3.6%)

### STROUD DISTRICT

Claim count:	945
Compared to last month:	7.4%
Claimant rate:	1.3%
Highest claiming wards	Slade (3.2%)

### FOREST OF DEAN

Claim count:	1,100
Compared to last month:	0.0%
Claimant rate:	2.1%
Highest claiming ward	Lydney East (4.1%)

### TEWKESBURY BOROUGH

Claim count:	865
Compared to last month:	3.6%
Claimant rate:	1.6%
Highest claiming ward	Tewkesbury Prior's Park (4.0%)

## PART 2: UK, SW AND GLOUCESTERSHIRE INDICATORS

The unemployment situation in Gloucestershire compared to the South West and the UK.

### Claimant Rate

Figure 1: Claimant Rate for Gloucestershire, the South West and UK over the past year

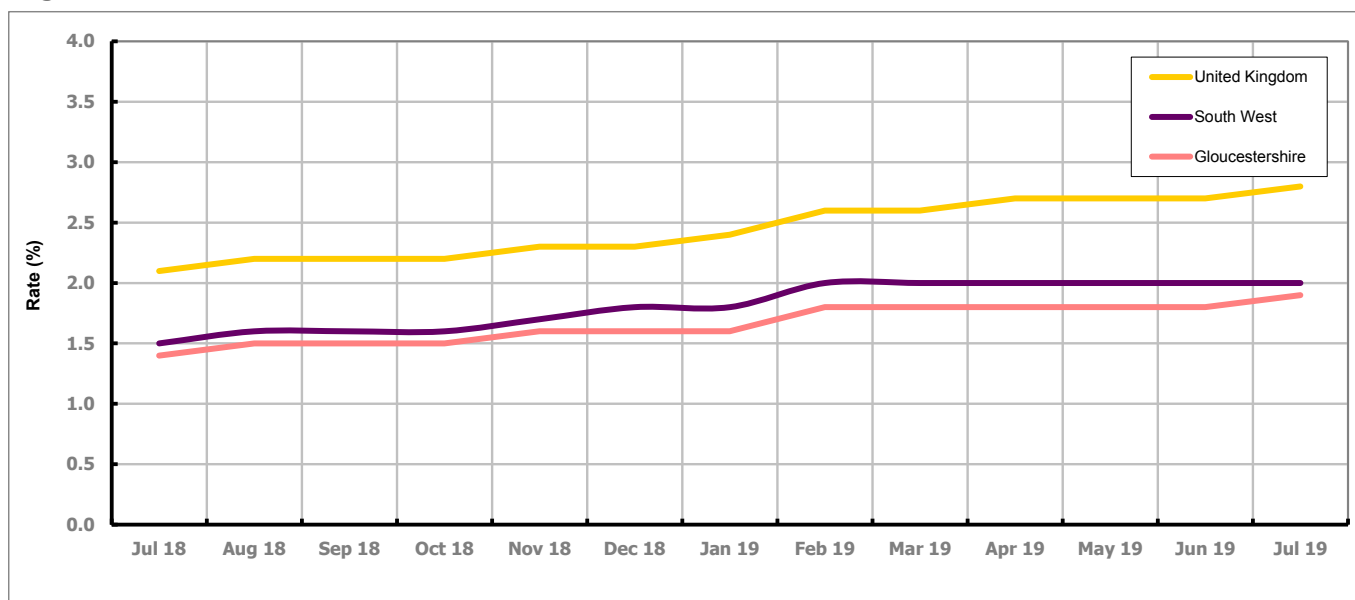


Figure 1 shows the claimant rate for Gloucestershire at 1.9% in July 2019. The Gloucestershire rate has been lower than the South West average since December 2015, with the exception of April and May 2016 when it was the same. It has been persistently lower by approximately 0.8% against the UK average.

### Claimant Count

Table 1: Analysis of UK, South West and Gloucestershire Claimant Counts

Area	Claimant Count in July 2019	% change on June 2019	Consecutive months increasing
UK	1,157,500	1.9%	12
South West	68,605	1.1%	12
Gloucestershire	7,195	2.6%	13

Table 1 shows that in July 2019, the number of claimants in Gloucestershire was 2.6% higher than the number in June 2019.

## PART 3: LOCAL AUTHORITY DISTRICT ANALYSIS

### Claimant Rate and Claimant Count

Figure 2: Claimant Rate (%) across Gloucestershire - July 2019

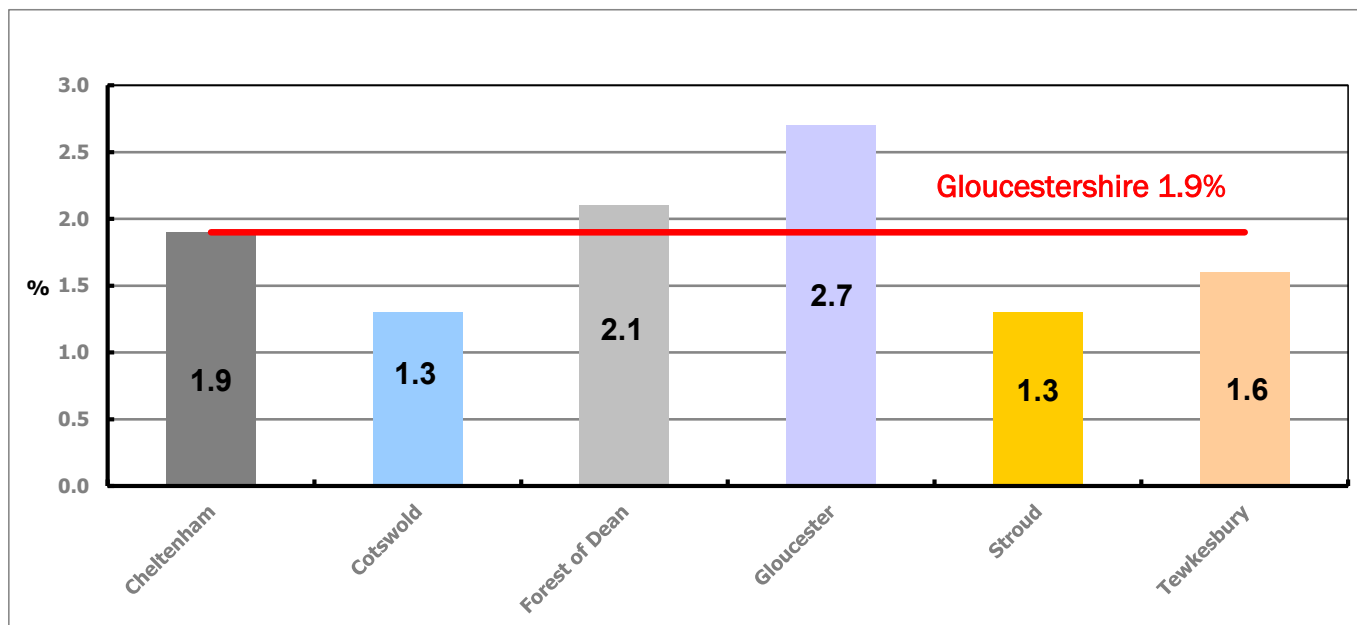


Figure 2 shows the claimant rate for July 2019 in Gloucestershire. Between June 2019 and July 2019 the rate increased in all districts, except the Forest of Dean and Gloucester which stayed the same

Table 2: Analysis of Gloucestershire and District Claimant Counts

Total	Jul 19 Number	Jul 19 Rate	Jun 19 Number	Jun 19 Rate	Monthly change	% monthly change	Monthly change of rate
<b>Gloucestershire</b>	<b>7,195</b>	<b>1.9</b>	<b>7,010</b>	<b>1.8</b>	<b>185</b>	<b>2.6%</b>	<b>0.1</b>
Cheltenham	1,395	1.9	1,360	1.8	35	2.6%	0.1
Cotswold	655	1.3	640	1.2	15	2.3%	0.1
Forest of Dean	1,100	2.1	1,100	2.1	0	0.0%	0.0
Gloucester	2,230	2.7	2,190	2.7	40	1.8%	0.0
Stroud	945	1.3	880	1.2	65	7.4%	0.1
Tewkesbury	865	1.6	835	1.5	30	3.6%	0.1

Table 2 shows the change in the claimant count in July 2019 compared to June 2019. All districts saw an increase in the number of claimants, except the Forest of Dean which stayed the same.

Table 3: Analysis of Male Gloucestershire and District Claimant Counts

Male	Jul 19 Number	Jul 19 Rate	Jun 19 Number	Jun 19 Rate	Monthly change	% monthly change	Monthly change of rate
<b>Gloucestershire</b>	<b>4,170</b>	<b>2.2</b>	<b>4,085</b>	<b>2.1</b>	<b>85</b>	<b>2.1%</b>	<b>0.1</b>
Cheltenham	850	2.3	825	2.2	25	3.0%	0.1
Cotswold	370	1.5	360	1.4	10	2.8%	0.1
Forest of Dean	630	2.5	640	2.5	-10	-1.6%	0.0
Gloucester	1,345	3.3	1,320	3.2	25	1.9%	0.1
Stroud	510	1.4	490	1.4	20	4.1%	0.0
Tewkesbury	465	1.7	445	1.6	20	4.5%	0.1

Table 3 shows the change in the male claimant count in July 2019 compared to June 2019. All districts saw an increase in the number of male claimants, except the Forest of Dean which saw a decrease.

Table 4: Analysis of Female Gloucestershire and District Claimant Counts

Female	Jul 19 Number	Jul 19 Rate	Jun 19 Number	Jun 19 Rate	Monthly change	% monthly change	Monthly change of rate
<b>Gloucestershire</b>	<b>3,025</b>	<b>1.6</b>	<b>2,925</b>	<b>1.5</b>	<b>100</b>	<b>3.4%</b>	<b>0.1</b>
Cheltenham	545	1.5	535	1.5	10	1.9%	0.0
Cotswold	285	1.1	275	1.0	10	3.6%	0.1
Forest of Dean	470	1.8	460	1.8	10	2.2%	0.0
Gloucester	885	2.2	870	2.1	15	1.7%	0.1
Stroud	435	1.2	395	1.1	40	10.1%	0.1
Tewkesbury	400	1.4	390	1.4	10	2.6%	0.0

Table 4 shows the change in the female claimant count in July 2019 compared to June 2019. All districts saw an increase in the number of female claimants.

## PART 4: LOCAL AUTHORITY DISTRICT AND WARD ANALYSIS

This section covers the six districts and a comparison of their constituent wards.

### 4.1 Cheltenham Borough

#### Claimant Rate and Claimant Count

Figure 3: Cheltenham Borough claimant rate over the last year

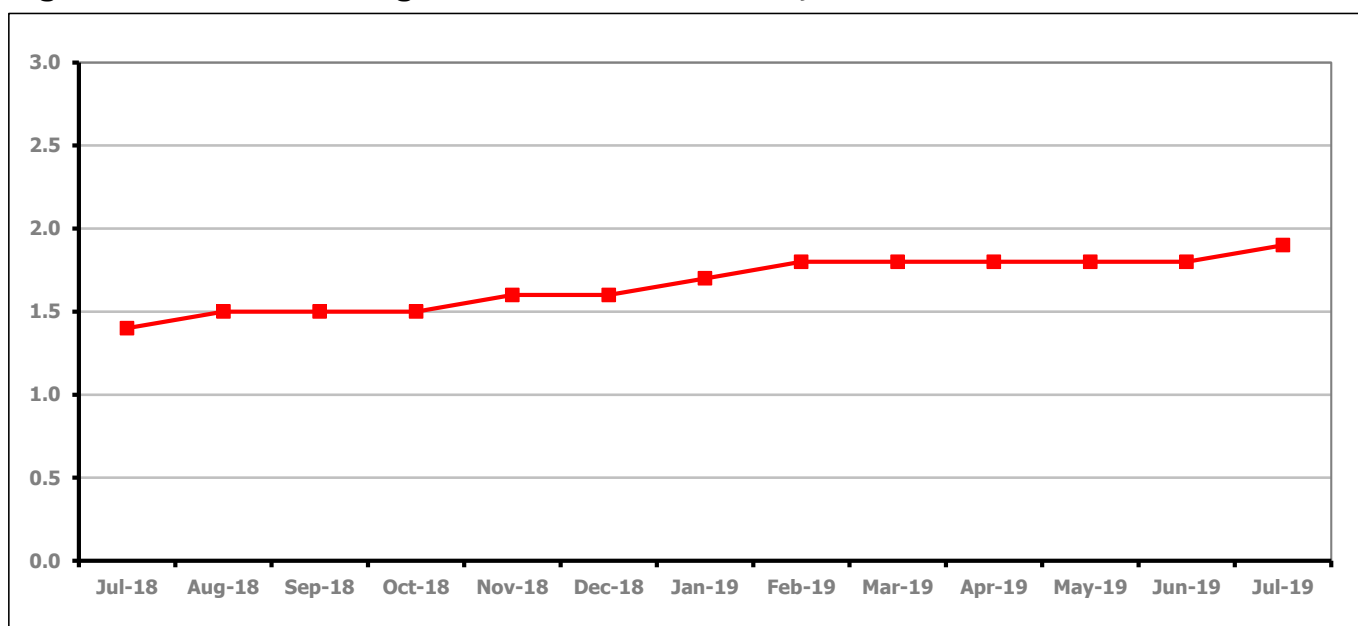


Figure 3 shows the claimant rate in Cheltenham increased in July 2019 to 1.9%.

Figure 4: Claimant rates across Cheltenham Borough wards - July 2019

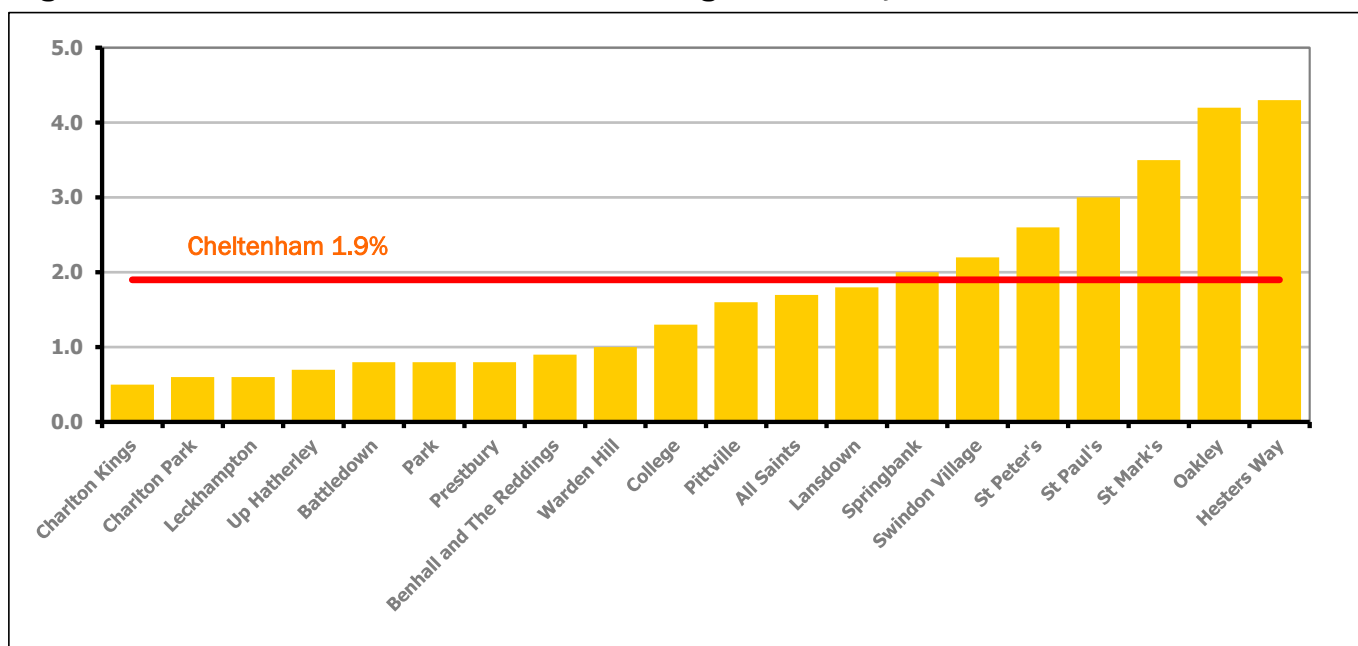


Figure 4 shows the claimant rates for Cheltenham Borough wards. The red line represents the average claimant rate across the Borough of 1.9%. Seven wards lie above the average.

## PART 4: LOCAL AUTHORITY DISTRICT AND WARD ANALYSIS

### 4.1 Cheltenham Borough continued...

Table 5: Analysis of Claimant Count at Cheltenham Borough ward level - July 2019

District	Ward	Rate	Rank*
Cheltenham	Charlton Kings	0.5	3
Cheltenham	Charlton Park	0.6	7
Cheltenham	Leckhampton	0.6	7
Cheltenham	Up Hatherley	0.7	14
Cheltenham	Battledown	0.8	21
Cheltenham	Park	0.8	21
Cheltenham	Prestbury	0.8	21
Cheltenham	Benhall and The Reddings	0.9	30
Cheltenham	Warden Hill	1.0	38
Cheltenham	College	1.3	70
Cheltenham	Pittville	1.6	90
Cheltenham	All Saints	1.7	96
Cheltenham	Lansdown	1.8	102
Cheltenham	Springbank	2.0	109
Cheltenham	Swindon Village	2.2	116
Cheltenham	St Peter's	2.6	124
Cheltenham	St Paul's	3.0	128
Cheltenham	St Mark's	3.5	132
Cheltenham	Oakley	4.2	141
Cheltenham	Hesters Way	4.3	142

	lowest 10% of county
	first quartile of county
	second quartile of county
	third quartile of county
	fourth quartile of county
	highest 10% of county

\* 1 = "best" and 146 = "worst"

Table 5 shows overall claimant rates for Cheltenham Borough wards and their position relative to all wards in Gloucestershire.

## PART 4: LOCAL AUTHORITY DISTRICT AND WARD ANALYSIS

### 4.2 Cotswold District

#### Claimant Rate and Claimant Count

Figure 5: Cotswold District claimant rate over the last year

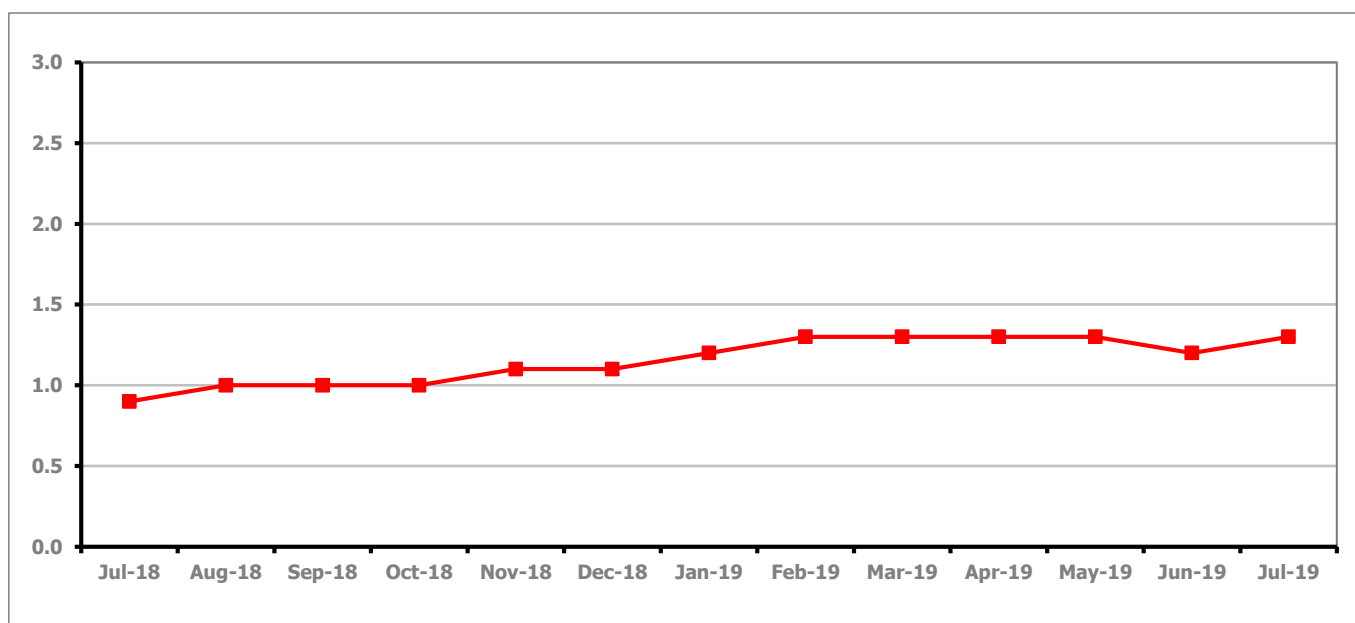


Figure 5 shows the claimant rate in Cotswold District increased in July 2019 to 1.3%.

Figure 6: Claimant rates across Cotswold District wards - July 2019

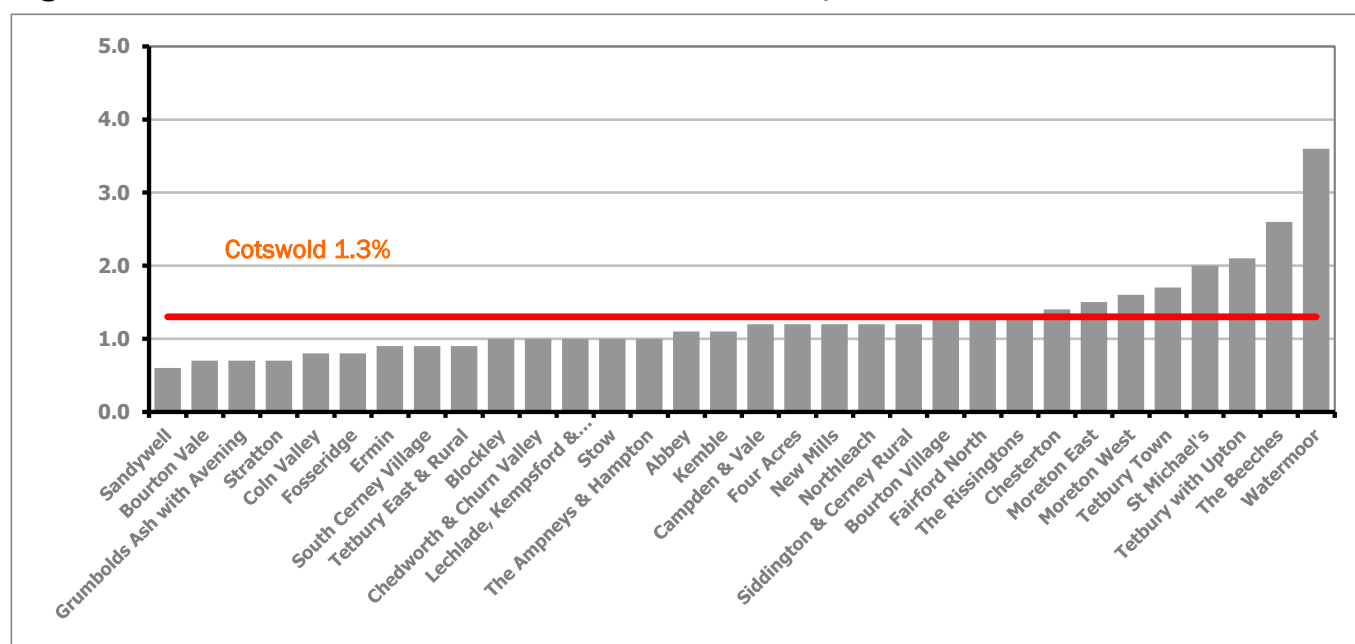


Figure 6 shows the claimant rates for Cotswold District wards. The red line represents the average claimant rate across the District of 1.3%. Eight wards lie above the average.



## PART 4: LOCAL AUTHORITY DISTRICT AND WARD ANALYSIS

### 4.2 Cotswold District continued...

Table 6: Analysis of Claimant Count at Cotswold District ward level - July 2019

District	Ward	Rate	Rank*
Cotswolds	Sandywell	0.6	7
Cotswolds	Bourton Vale	0.7	14
Cotswolds	Grumbolds Ash with Avening	0.7	14
Cotswolds	Stratton	0.7	14
Cotswolds	Coln Valley	0.8	21
Cotswolds	Fosseridge	0.8	21
Cotswolds	Ermin	0.9	30
Cotswolds	South Cerney Village	0.9	30
Cotswolds	Tetbury East & Rural	0.9	30
Cotswolds	Blockley	1.0	38
Cotswolds	Chedworth & Churn Valley	1.0	38
Cotswolds	Lechlade, Kempsford & Fairford South	1.0	38
Cotswolds	Stow	1.0	38
Cotswolds	The Ampneys & Hampton	1.0	38
Cotswolds	Abbey	1.1	49
Cotswolds	Kemble	1.1	49
Cotswolds	Campden & Vale	1.2	62
Cotswolds	Four Acres	1.2	62
Cotswolds	New Mills	1.2	62
Cotswolds	Northleach	1.2	62
Cotswolds	Siddington & Cerney Rural	1.2	62
Cotswolds	Bourton Village	1.3	70
Cotswolds	Fairford North	1.3	70
Cotswolds	The Rissingtons	1.3	70
Cotswolds	Chesterton	1.4	80
Cotswolds	Moreton East	1.5	85
Cotswolds	Moreton West	1.6	90
Cotswolds	Tetbury Town	1.7	96
Cotswolds	St Michael's	2.0	109
Cotswolds	Tetbury with Upton	2.1	115
Cotswolds	The Beeches	2.6	124
Cotswolds	Watermoor	3.6	134

	lowest 10% of county
	first quartile of county
	second quartile of county
	third quartile of county
	fourth quartile of county
	highest 10% of county

\* 1 = "best" and 146 = "worst"

Table 6 shows overall claimant rates for Cotswold District wards and their position relative to all wards in Gloucestershire.

## PART 4: LOCAL AUTHORITY DISTRICT AND WARD ANALYSIS

### 4.3 Forest of Dean District

#### Claimant Rate and Claimant Count

Figure 7: Forest of Dean District claimant rate over the last year

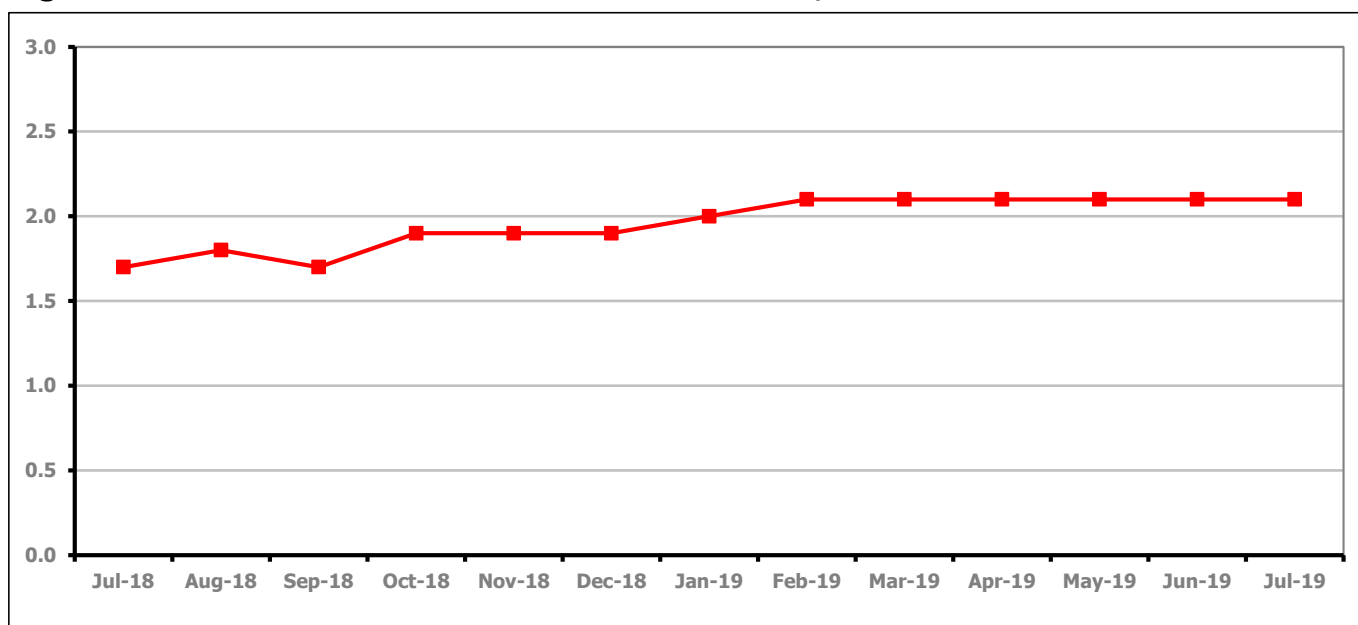


Figure 7 shows the claimant rate in the Forest of Dean stayed the same as last month at 2.1%

Figure 8: Claimant rates across Forest of Dean District wards - July 2019

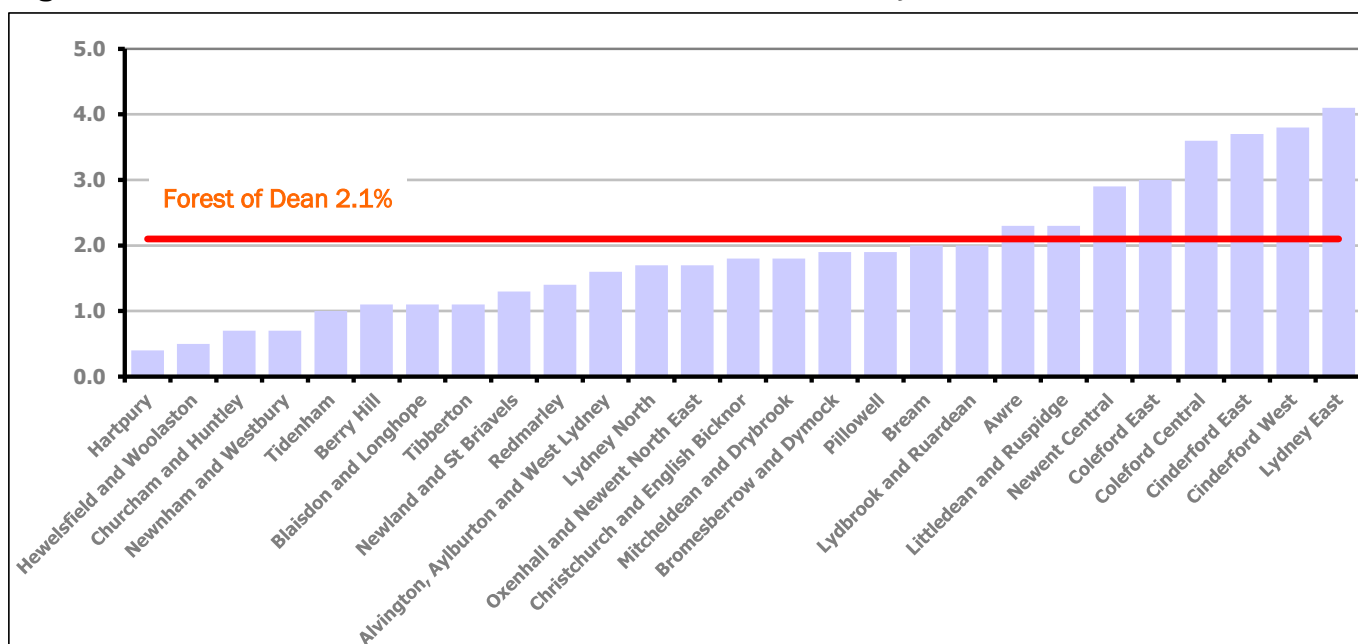


Figure 8 shows the claimant rates for the Forest of Dean District wards. The red line represents the average claimant rate across the District of 2.1%. Eight wards lie above the average.

## PART 4: LOCAL AUTHORITY DISTRICT AND WARD ANALYSIS

### 4.3 Forest of Dean District continued...

Table 7: Analysis of Claimant Count at Forest of Dean District ward level - July 2019

District	Ward	Rate	Rank*
Forest	Hartpury	0.4	2
Forest	Hewelsfield and Woolaston	0.5	3
Forest	Churcham and Huntley	0.7	14
Forest	Newnham and Westbury	0.7	14
Forest	Tidenham	1.0	38
Forest	Berry Hill	1.1	49
Forest	Blaisdon and Longhope	1.1	49
Forest	Tibberton	1.1	49
Forest	Newland and St Briavels	1.3	70
Forest	Redmarley	1.4	80
Forest	Alvington, Aylburton and West Lydney	1.6	90
Forest	Lydney North	1.7	96
Forest	Oxenhall and Newent North East	1.7	96
Forest	Christchurch and English Bicknor	1.8	102
Forest	Mitcheldean and Drybrook	1.8	102
Forest	Bromesberrow and Dymock	1.9	107
Forest	Pillowell	1.9	107
Forest	Bream	2.0	109
Forest	Lydbrook and Ruardean	2.0	109
Forest	Awre	2.3	118
Forest	Littledean and Ruspidge	2.3	118
Forest	Newent Central	2.9	127
Forest	Coleford East	3.0	128
Forest	Coleford Central	3.6	134
Forest	Cinderford East	3.7	136
Forest	Cinderford West	3.8	137
Forest	Lydney East	4.1	140

	lowest 10% of county
	first quartile of county
	second quartile of county
	third quartile of county
	fourth quartile of county
	highest 10% of county

\* 1 = "best" and 146 = "worst"

Table 7 shows overall claimant rates for the Forest of Dean District wards and their position relative to all wards in Gloucestershire.

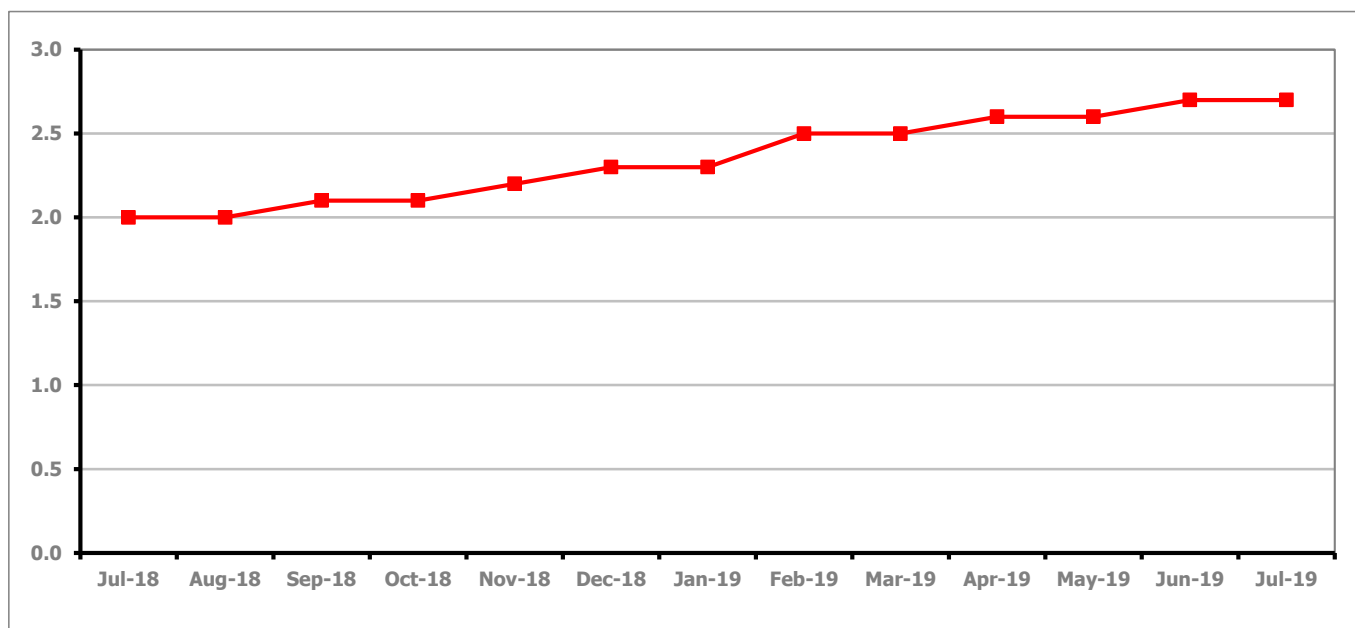
**PART 4: LOCAL AUTHORITY DISTRICT AND WARD ANALYSIS****4.4 Gloucester City****Claimant Rate and Claimant Count***Figure 9: Gloucester City claimant rate over the last year*

Figure 9 shows the claimant rate for Gloucester City stayed the same as last month at 2.7%.

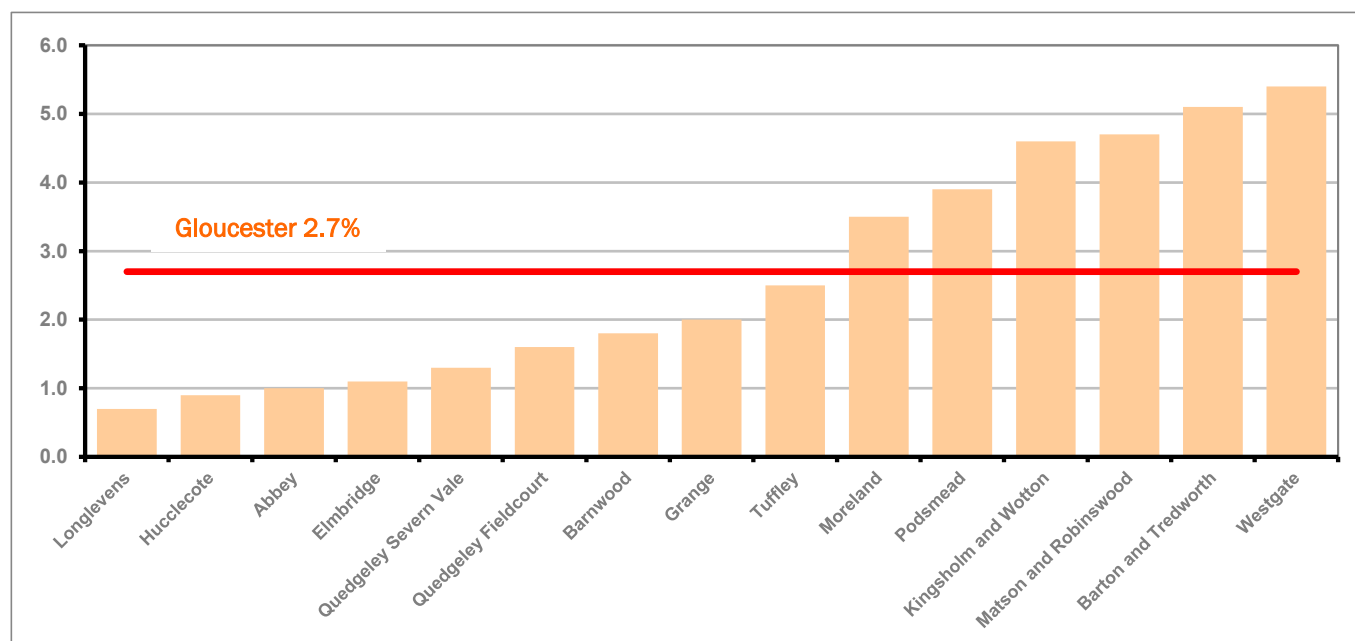
*Figure 10: Claimant rates across Gloucester City wards - July 2019*

Figure 10 shows the claimant rates for Gloucester City district wards. The red line represents the average claimant rate across the City of 2.7%. Six wards lie above the average.

## PART 4: LOCAL AUTHORITY DISTRICT AND WARD ANALYSIS

### 4.4 Gloucester City continued...

Table 8: Analysis of Claimant Count at Gloucester City ward level - July 2019

District	Ward	Rate	Rank*
Gloucester	Longlevens	0.7	14
Gloucester	Hucclecote	0.9	30
Gloucester	Abbey	1.0	38
Gloucester	Elmbridge	1.1	49
Gloucester	Quedgeley Severn Vale	1.3	70
Gloucester	Quedgeley Fieldcourt	1.6	90
Gloucester	Barnwood	1.8	102
Gloucester	Grange	2.0	109
Gloucester	Tuffley	2.5	122
Gloucester	Moreland	3.5	132
Gloucester	Podsmead	3.9	138
Gloucester	Kingsholm and Wotton	4.6	143
Gloucester	Matson and Robinswood	4.7	144
Gloucester	Barton and Tredworth	5.1	145
Gloucester	Westgate	5.4	146

	lowest 10% of county
	first quartile of county
	second quartile of county
	third quartile of county
	fourth quartile of county
	highest 10% of county

\* 1 = "best" and 146 = "worst"

Table 8 shows overall claimant rates for Gloucester City wards and their position relative to all wards in Gloucestershire.

## PART 4: LOCAL AUTHORITY DISTRICT AND WARD ANALYSIS

### 4.5 Stroud District

#### Claimant Rate and Claimant Count

Figure 11: Stroud District claimant rate over the last year

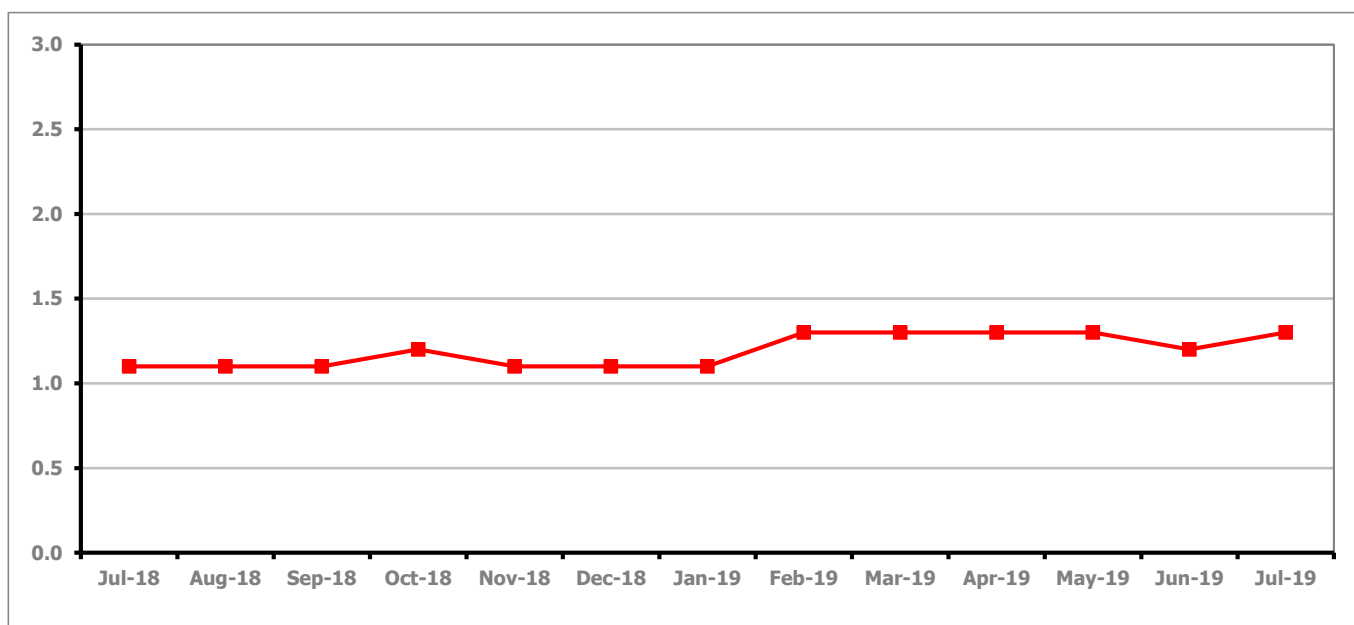


Figure 11 shows the claimant rate for Stroud increased in July 2019 to 1.3%.

Figure 12: Claimant rates across Stroud District wards - July 2019

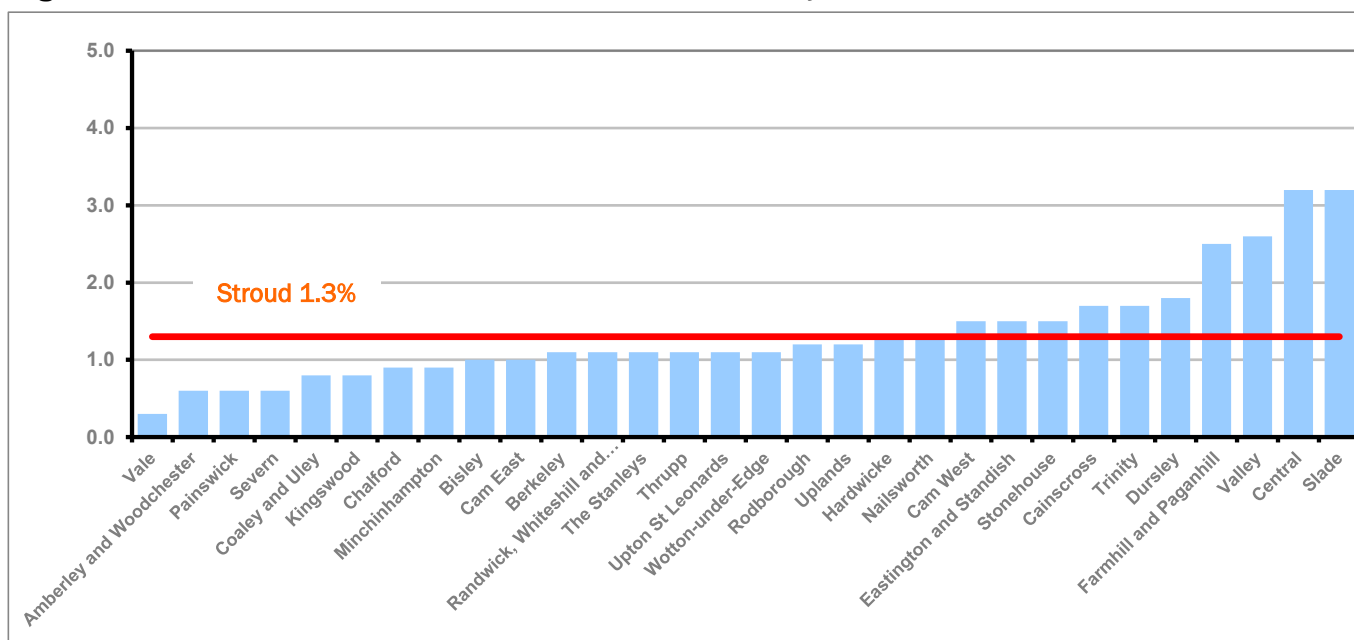


Figure 12 shows the claimant rates in Stroud District wards. The red line represents the average claimant rate across the District of 1.3%. Ten wards are above the average.

## PART 4: LOCAL AUTHORITY AND DISTRICT ANALYSIS

### 4.5 Stroud District continued...

Table 9: Analysis of Claimant Count at Stroud District ward level - July 2019

District	Ward	Rate	Rank*
Stroud	Vale	0.3	1
Stroud	Amberley and Woodchester	0.6	7
Stroud	Painswick	0.6	7
Stroud	Severn	0.6	7
Stroud	Coaley and Uley	0.8	21
Stroud	Kingswood	0.8	21
Stroud	Chalford	0.9	30
Stroud	Minchinhampton	0.9	30
Stroud	Bisley	1.0	38
Stroud	Cam East	1.0	38
Stroud	Berkeley	1.1	49
Stroud	Randwick, Whiteshill and Ruscombe	1.1	49
Stroud	The Stanleys	1.1	49
Stroud	Thrupp	1.1	49
Stroud	Upton St Leonards	1.1	49
Stroud	Wotton-under-Edge	1.1	49
Stroud	Rodborough	1.2	62
Stroud	Uplands	1.2	62
Stroud	Hardwicke	1.3	70
Stroud	Nailsworth	1.3	70
Stroud	Cam West	1.5	85
Stroud	Eastington and Standish	1.5	85
Stroud	Stonehouse	1.5	85
Stroud	Cainscross	1.7	96
Stroud	Trinity	1.7	96
Stroud	Dursley	1.8	102
Stroud	Farmhill and Paganhill	2.5	122
Stroud	Valley	2.6	124
Stroud	Central	3.2	130
Stroud	Slade	3.2	130

	lowest 10% of county
	first quartile of county
	second quartile of county
	third quartile of county
	fourth quartile of county
	highest 10% of county

\* 1 = "best" and 146 = "worst"

Table 9 shows overall claimant rates for Stroud District wards and their position relative to all wards in Gloucestershire.

## PART 4: LOCAL AUTHORITY DISTRICT AND WARD ANALYSIS

### 4.6 Tewkesbury Borough

#### Claimant Rate and Claimant Count

Figure 13: Tewkesbury Borough claimant rate over the last year

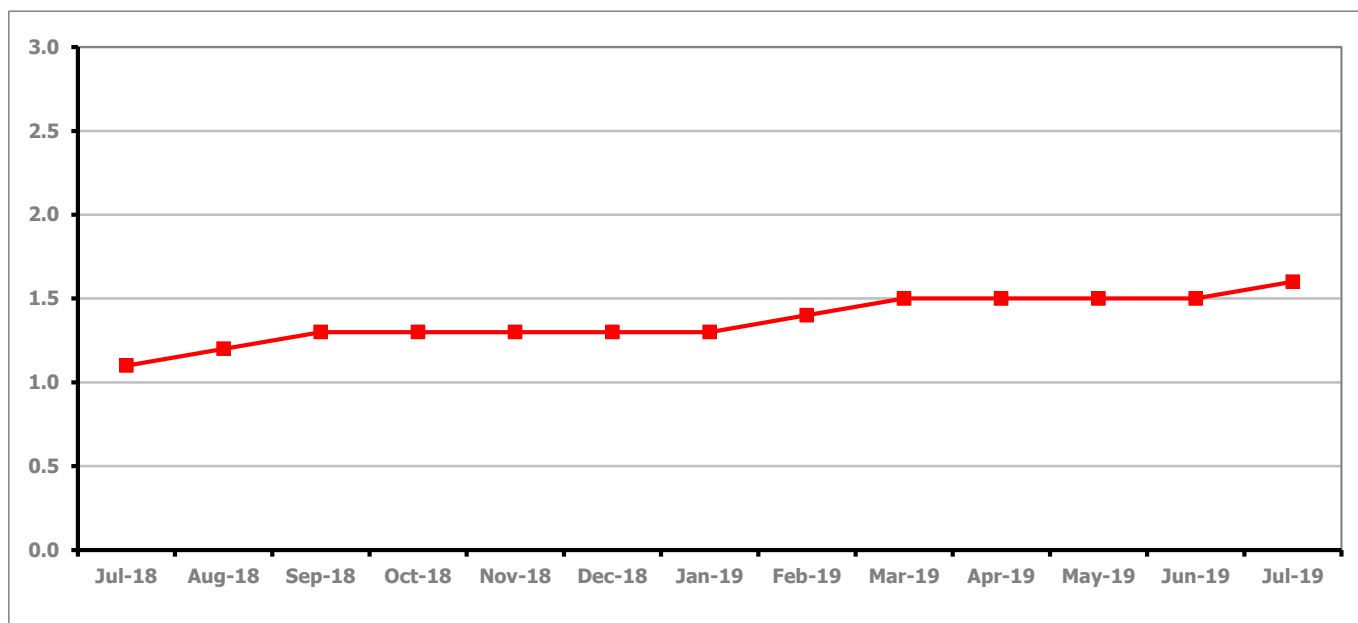


Figure 13 shows the claimant rate for Tewkesbury Borough increased in July 2019 to 1.6%.

Figure 14: Claimant rates across Tewkesbury Borough wards - July 2019

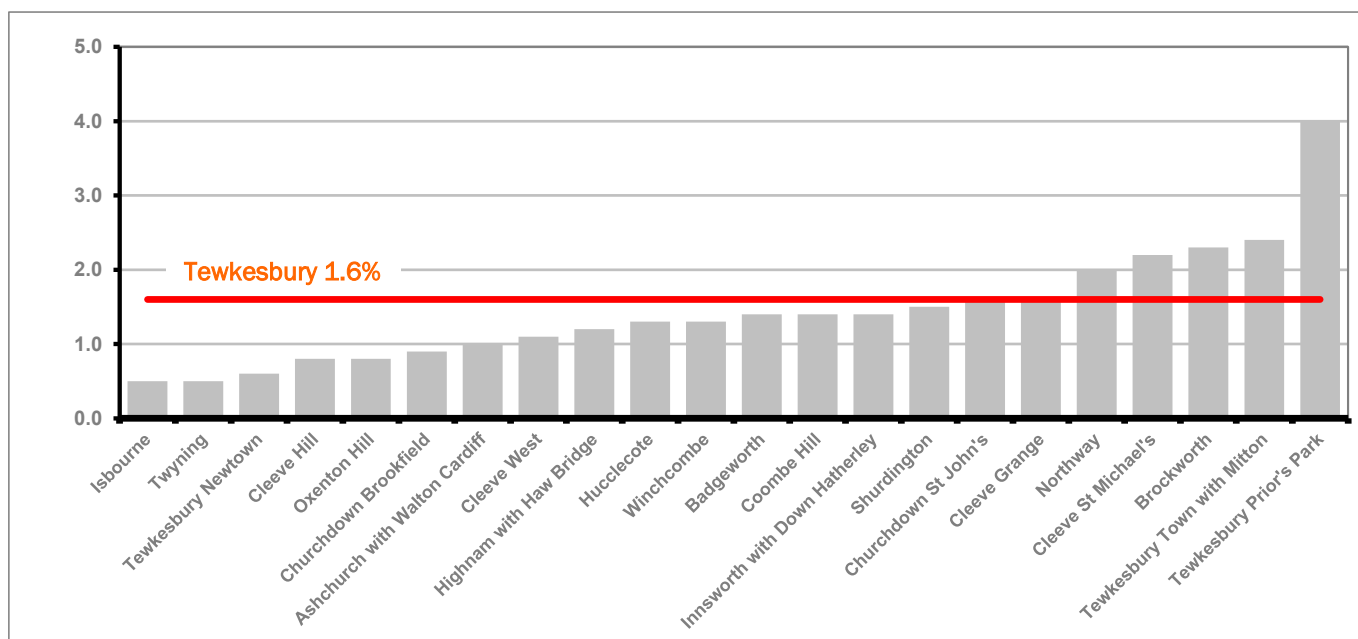


Figure 14 shows the claimant rates in Tewkesbury Borough wards. The red line represents the average claimant rate across the District of 1.6%. Five wards are above the average.



## PART 4: LOCAL AUTHORITY AND DISTRICT ANALYSIS

### 4.6 Tewkesbury Borough continued...

Table 10: Analysis of Claimant Count at Tewkesbury Borough level - July 2019

District	Ward	Rate	Rank*
Tewkesbury	Isbourne	0.5	3
Tewkesbury	Twynning	0.5	3
Tewkesbury	Tewkesbury Newtown	0.6	7
Tewkesbury	Cleeve Hill	0.8	21
Tewkesbury	Oxenton Hill	0.8	21
Tewkesbury	Churchdown Brookfield	0.9	30
Tewkesbury	Ashchurch with Walton Cardiff	1.0	38
Tewkesbury	Cleeve West	1.1	49
Tewkesbury	Highnam with Haw Bridge	1.2	62
Tewkesbury	Hucclecote	1.3	70
Tewkesbury	Winchcombe	1.3	70
Tewkesbury	Badgeworth	1.4	80
Tewkesbury	Coombe Hill	1.4	80
Tewkesbury	Innsworth with Down Hatherley	1.4	80
Tewkesbury	Shurdington	1.5	85
Tewkesbury	Churchdown St John's	1.6	90
Tewkesbury	Cleeve Grange	1.6	90
Tewkesbury	Northway	2.0	109
Tewkesbury	Cleeve St Michael's	2.2	116
Tewkesbury	Brockworth	2.3	118
Tewkesbury	Tewkesbury Town with Mitton	2.4	121
Tewkesbury	Tewkesbury Prior's Park	4.0	139

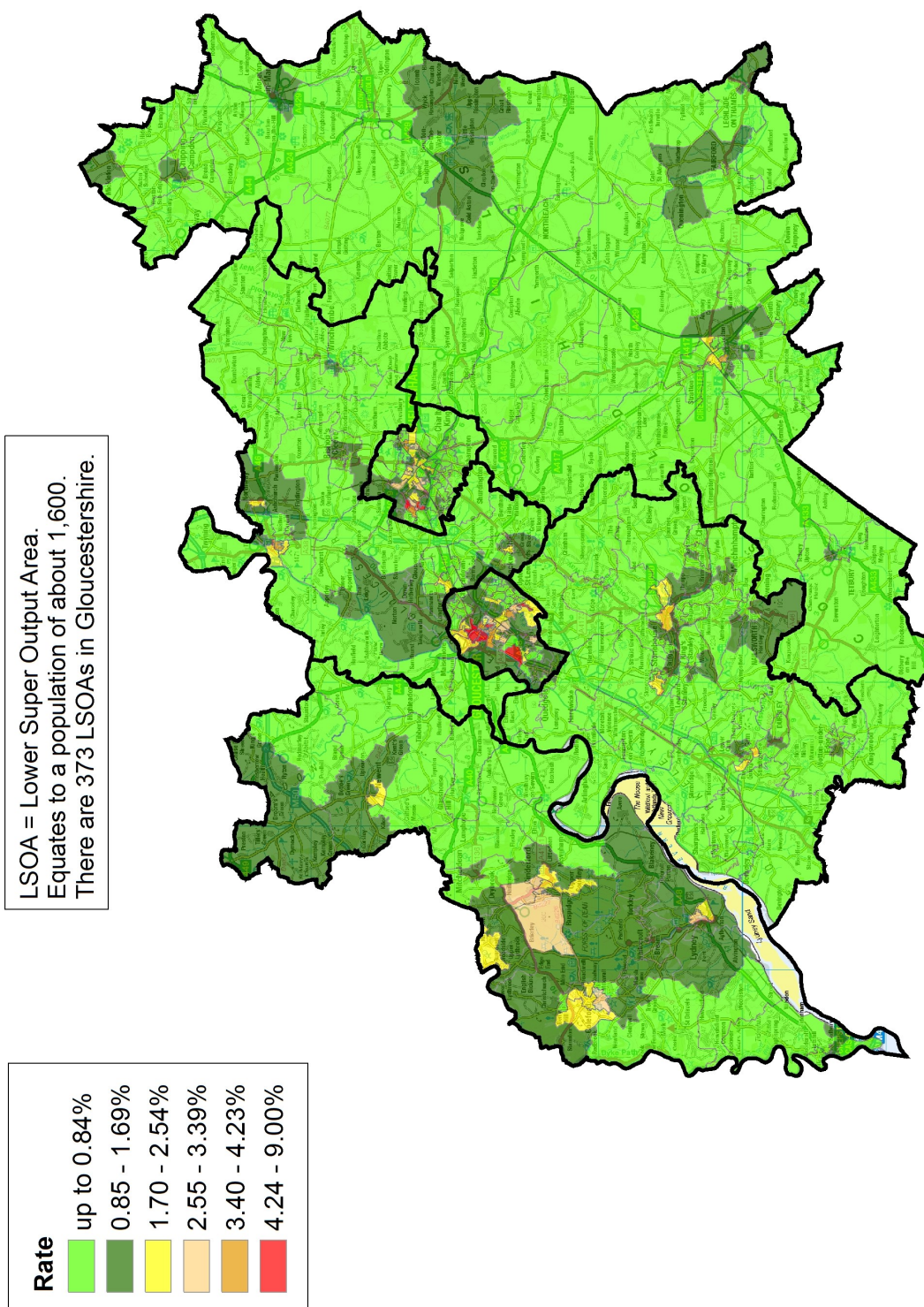
	lowest 10% of county
	first quartile of county
	second quartile of county
	third quartile of county
	fourth quartile of county
	highest 10% of county

\* 1 = "best" and 146 = "worst"

Table 10 shows overall claimant rates for Tewkesbury Borough wards and their position relative to all wards in Gloucestershire.

## PART 5: MAP SHOWING DISTRIBUTION OF CLAIMANT RATE ACROSS GLOUCESTERSHIRE

### Claimant Count Rate by LSOA in Gloucestershire, July 2019



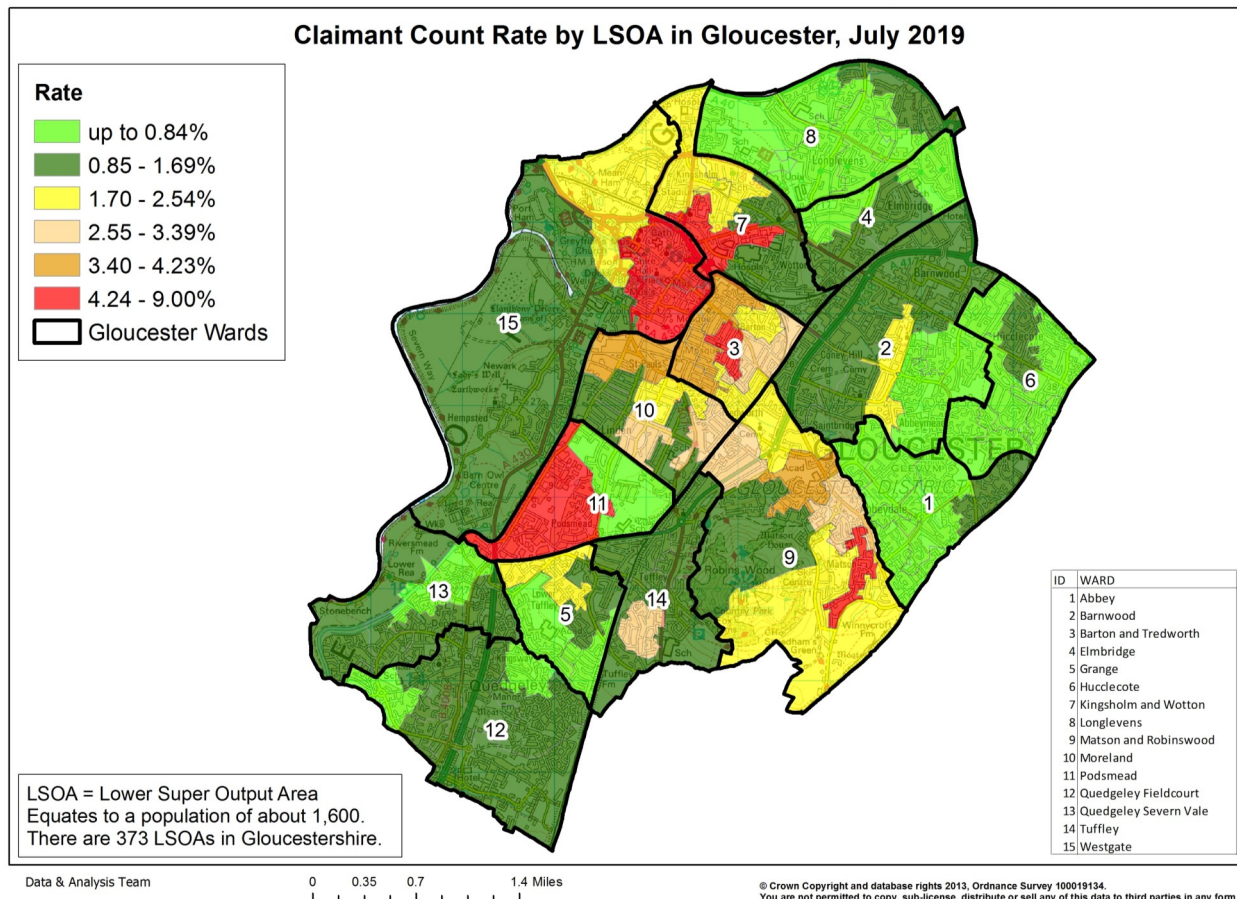
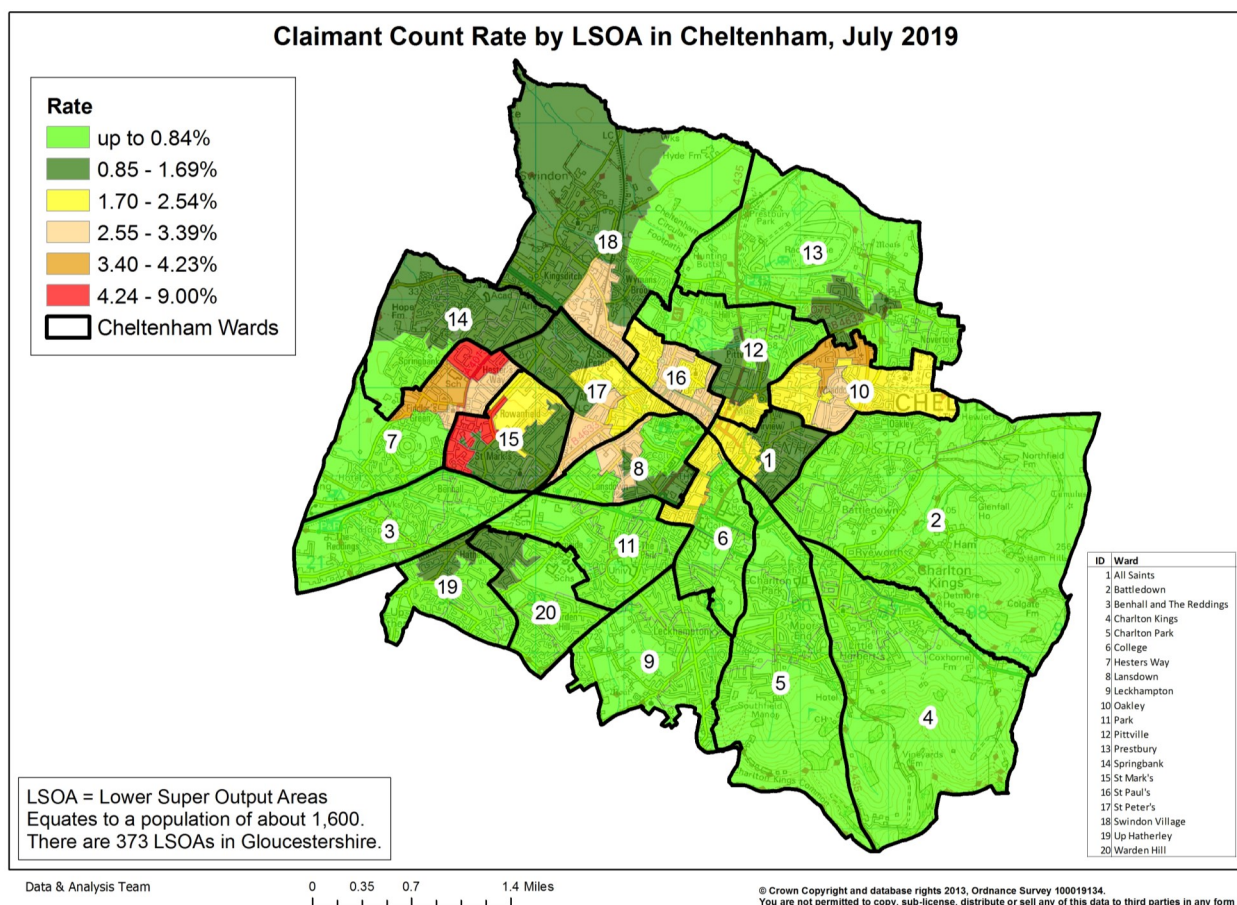
Data &amp; Analysis Team

0 2.75 5.5 11 Miles

© Crown Copyright and database rights 2013, Ordnance Survey 100019134.  
You are not permitted to copy, sub-license, distribute or sell any of this data to third parties in any form



## PART 5: MAP SHOWING DISTRIBUTION OF CLAIMANT RATE ACROSS GLOUCESTERSHIRE



## PART 6: YOUTH UNEMPLOYMENT(18-24 year olds)

### Youth Claimant Rate and Claimant Count

Figure 15: Claimant Count for Gloucestershire over the past year

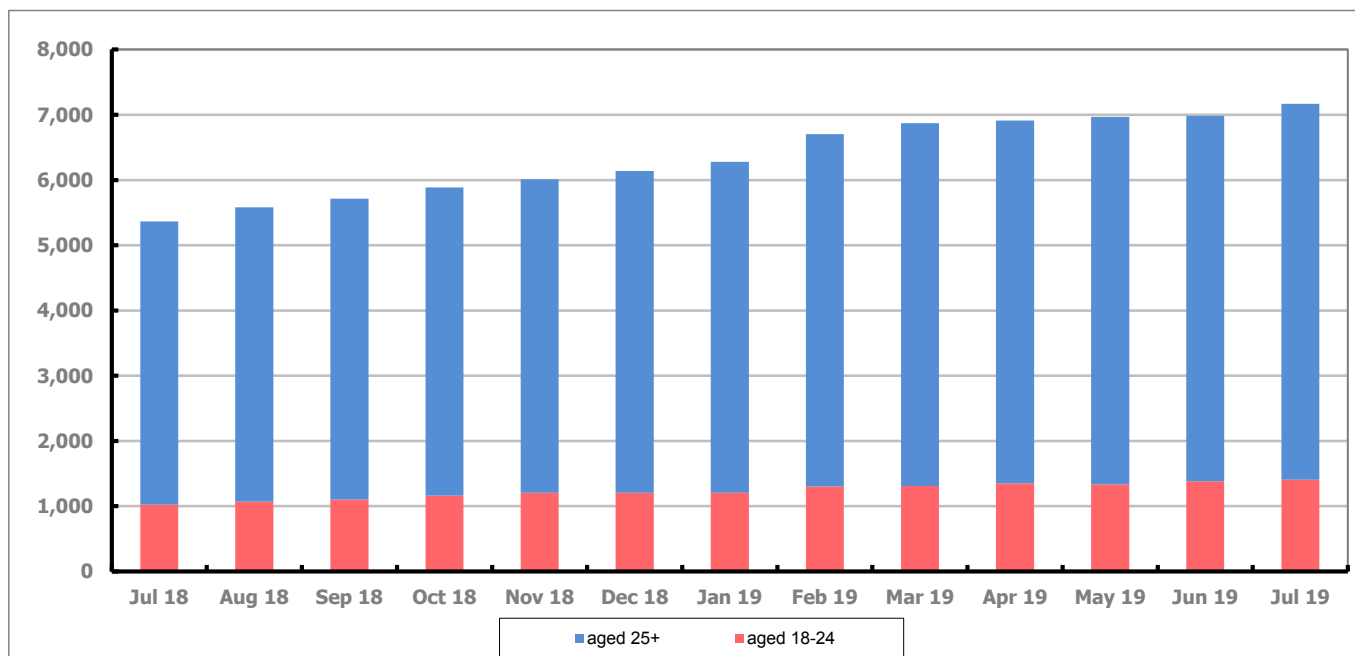


Figure 15 shows that in July 2019, 1,405 people aged 18-24 were claiming Job Seekers Allowance and Universal Credit who were not in work in Gloucestershire, this represents 19.5% of total working age claimants.

## PART 7: YOUNG PEOPLE NOT IN EDUCATION, EMPLOYMENT OR TRAINING (NEET) IN GLOUCESTERSHIRE

Data provided by Gloucestershire Youth Support Team on the situation of young people (16-18) in Gloucestershire who are not in education, employment or formal training.

Gloucestershire Youth Support Team is required to report performance with the 16-18 age range against nationally defined criteria for counting the NEET group. The NEET group includes young people actively seeking education, employment or training as well as those young people who are either not yet ready or who are unable to access these opportunities because of their personal circumstances. The figures quoted below include young people in both of these categories.

### Summary

At the end of July 2019 there were 324 young people aged 16-18 not in education, employment or training in Gloucestershire and this figure translates into an adjusted (\*) 16-18 NEET population of 2.54%. The total number of NEET young people decreased by 5 in July 2019 compared to June 2019, three districts saw a decrease in their figures and three districts saw an increase in their figure.

### Total NEET Group by District Area

#### July 2019 NEET data

	Cheltenham	Cotswold	Forest	Gloucester	Stroud	Tewkesbury	Total
Total NEET	67	27	48	107	36	39	324
Cohort	2201	1775	1702	3115	2630	1843	13266
% NEET	3.04	1.52	2.82	3.43	1.37	2.12	2.54*

If you would like to receive any further information on Gloucestershire's NEET strategy then please contact [Lynne.Speak@Prospects.co.uk](mailto:Lynne.Speak@Prospects.co.uk) or telephone 07900 391182.

(\*) Adjustment includes a proportion of young people aged 16-18 whose outcomes are not known to Gloucestershire Youth Support Team.