

# Unemployment Bulletin

Issue 89 December 2015

## Contents

<b>Part 1: Summary</b>	<b>1</b>
A summary of unemployment data at district, County, regional and national level	
<b>Part 2: County</b>	<b>3</b>
Unemployment figures for the County compared to the South West and the rest of the UK	
<b>Part 3: Districts</b>	<b>4</b>
A comparative break down of unemployment figures by district	
<b>Part 4: Wards</b>	
Further breakdown of unemployment figures by ward:	
<b>Cheltenham</b>	<b>6</b>
<b>Cotswolds</b>	<b>8</b>
<b>Forest of Dean</b>	<b>10</b>
<b>Gloucester</b>	<b>12</b>
<b>Stroud</b>	<b>14</b>
<b>Tewkesbury</b>	<b>16</b>
<b>Part 5: Map</b>	<b>18</b>
Distribution of claimant rate across Gloucestershire	
<b>Part 6: Youth Unemployment</b>	<b>20</b>
Unemployment data for the 18-24 year old age group	
<b>Part 7: Young People</b>	<b>22</b>
Data about Young People Not in Education, Employment or Training (NEET)	

The Claimant Count is a measure of the number of people who are unemployed and claiming benefits. From 1996 until the recent introduction of Universal Credit, this was based on the number of people claiming Jobseeker's Allowance. However, since its introduction some unemployment benefit claimants will be claiming Universal Credit instead.

**To reflect this change, the Claimant Count has been expanded to include people claiming Jobseeker's Allowance plus those who claim Universal Credit and who are out of work.** For more information about Universal Credit please see the [ONS website](http://www.ons.gov.uk).

## INTRODUCTION

The Unemployment Bulletin provides a monthly update on unemployment data for Gloucestershire, the South West region and the United Kingdom. It is produced by the Strategic Needs Analysis Team in the County Council's Strategy and Challenge function. The data is sourced from the Office for National Statistics via Nomis ([www.nomis.co.uk](http://www.nomis.co.uk)).

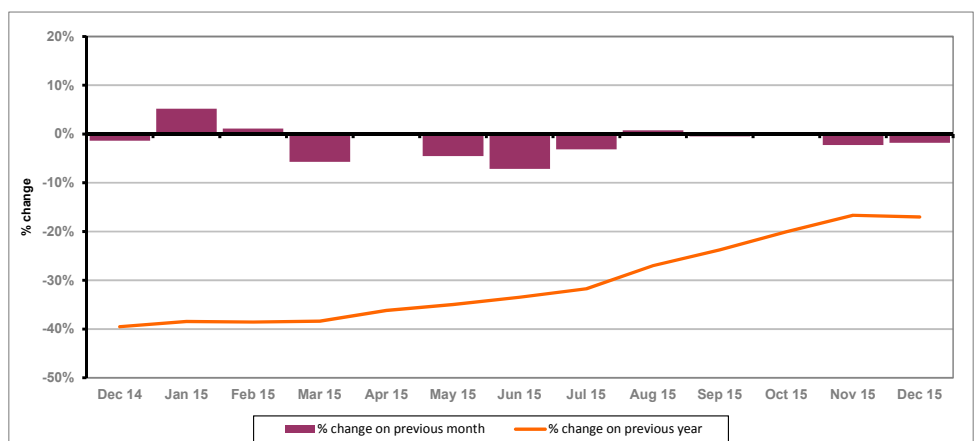
## PART 1: SUMMARY

**The claimant rate in Gloucestershire was 1.0% in December 2015.** This remained the same as the November 2015 figure. The UK and the South West rate remained the same as the previous month at 1.8% and 1.1% respectively. Gloucestershire's rate was 0.1% lower than the South West average of 1.1%, and 0.8% lower than the UK average of 1.8%.

**The claimant count in Gloucestershire in December 2015 decreased by 70 people.** The amount of people claiming in December 2015 was 1.8% lower than the number in November 2015. This compares to a 1.2% increase in the South West and a 0.2% decrease for the UK.

**The year on year claimant count in Gloucestershire has decreased since last month.** The count was 17.0% lower in December 2015 than at the same point in the previous year as shown in the graph below.

Gloucestershire claimants - Month on Month and Year on Year change:  
December 2014 to December 2015



Source: ONS Crown Copyright Reserved

Produced by:

**Strategic Needs Analysis Team**  
Strategy and Challenge  
Gloucestershire County Council  
January 2016

## DISTRICTS AT A GLANCE

At a glance unemployment information grouped by district. Includes:

**Claim count:** Total number of people claiming Job Seekers Allowance and Universal Credit who are not in work in December 2015

**Compared to last month:** How much larger/smaller December's claimant count is compared to November, expressed as a %

**Claimant rate:** The % of working age population claiming Job Seekers Allowance and Universal Credit who are not in work in December 2015

**Highest claiming ward:** The ward with the highest claim count in that district and the rate

### CHELTEMHAM BOROUGH

Claim count:	705
Compared to last month:	-7.2%
Claimant rate:	0.9%
Highest claiming ward	Hesters Way (1.9%)

### GLOUCESTER CITY

Claim count:	1,210
Compared to last month:	-3.6%
Claimant rate:	1.5%
Highest claiming ward	Barton and Tredworth (3.4%)

### COTSWOLD DISTRICT

Claim count:	310
Compared to last month:	-3.1%
Claimant rate:	0.6%
Highest claiming ward	Cirencester Watermoor (1.6%)

### STROUD DISTRICT

Claim count:	510
Compared to last month:	5.2%
Claimant rate:	0.7%
Highest claiming ward	Slade (2.0%)

### FOREST OF DEAN

Claim count:	635
Compared to last month:	6.7%
Claimant rate:	1.2%
Highest claiming ward	Cinderford East (2.6%), Cinderford West (2.6%)

### TEWKESBURY BOROUGH

Claim count:	470
Compared to last month:	-3.1%
Claimant rate:	0.9%
Highest claiming ward	Tewkesbury Prior's Park (2.6%)

## PART 2: UK, SW AND GLOUCESTERSHIRE INDICATORS

The unemployment situation in Gloucestershire compared to the South West and the UK.

### Claimant Rate

Figure 1: Claimant Rate for Gloucestershire, the South West and UK over the past year

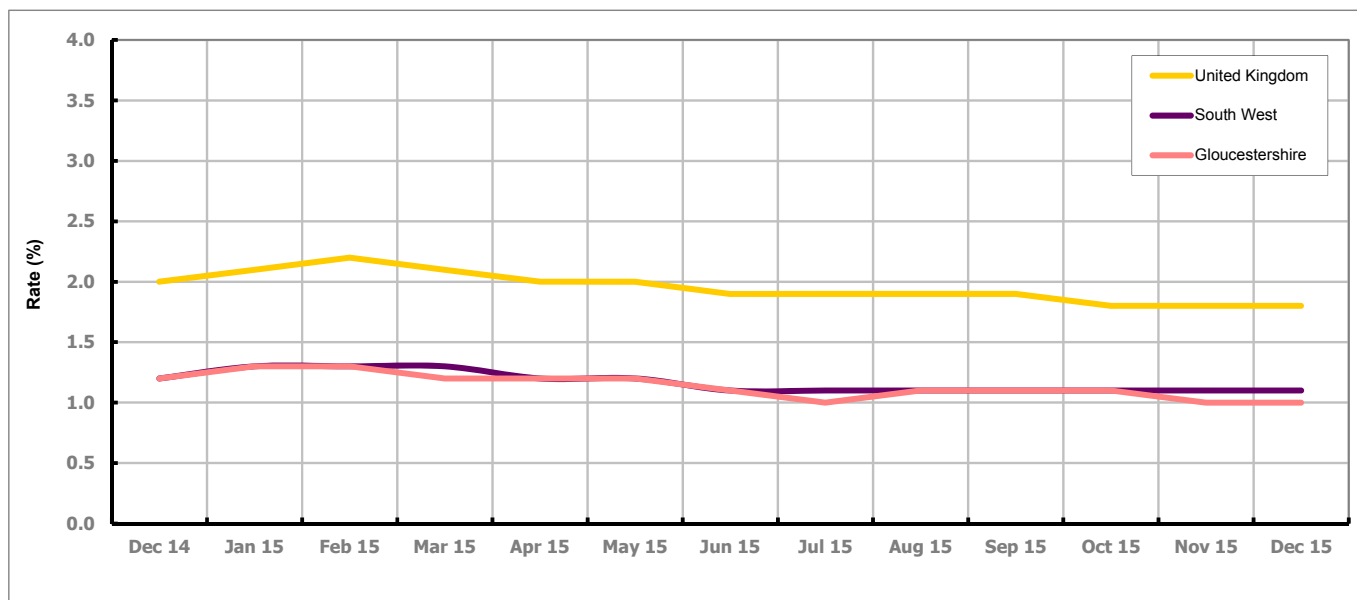


Figure 1 shows the claimant rate for Gloucestershire at 1.0% in December 2015. The Gloucestershire rate has been the same as the South West average since December 2014, with the exception of March, July, November and December 2015 when it was lower. It has been persistently lower by approximately 0.8% against the UK average.

### Claimant Count

Table 1: Analysis of UK, South West and Gloucestershire Claimant Counts

Area	Claimant Count in December 2015	% change on November 2015	Average % change over the last six months	Consecutive months decreasing
UK	740,715	-0.2%	-1.0%	4
South West	37,140	1.2%	0.2%	0
Gloucestershire	3,830	-1.8%	-0.6%	1

Table 1 shows that in December 2015, the number of claimants in Gloucestershire was 1.8% lower than the number in November 2015.

The average change in claimants in Gloucestershire for the six months to December 2015 was -0.6%.

## PART 3: LOCAL AUTHORITY DISTRICT ANALYSIS

### Claimant Rate and Claimant Count

Figure 2: Claimant Rate (%) across Gloucestershire - December 2015

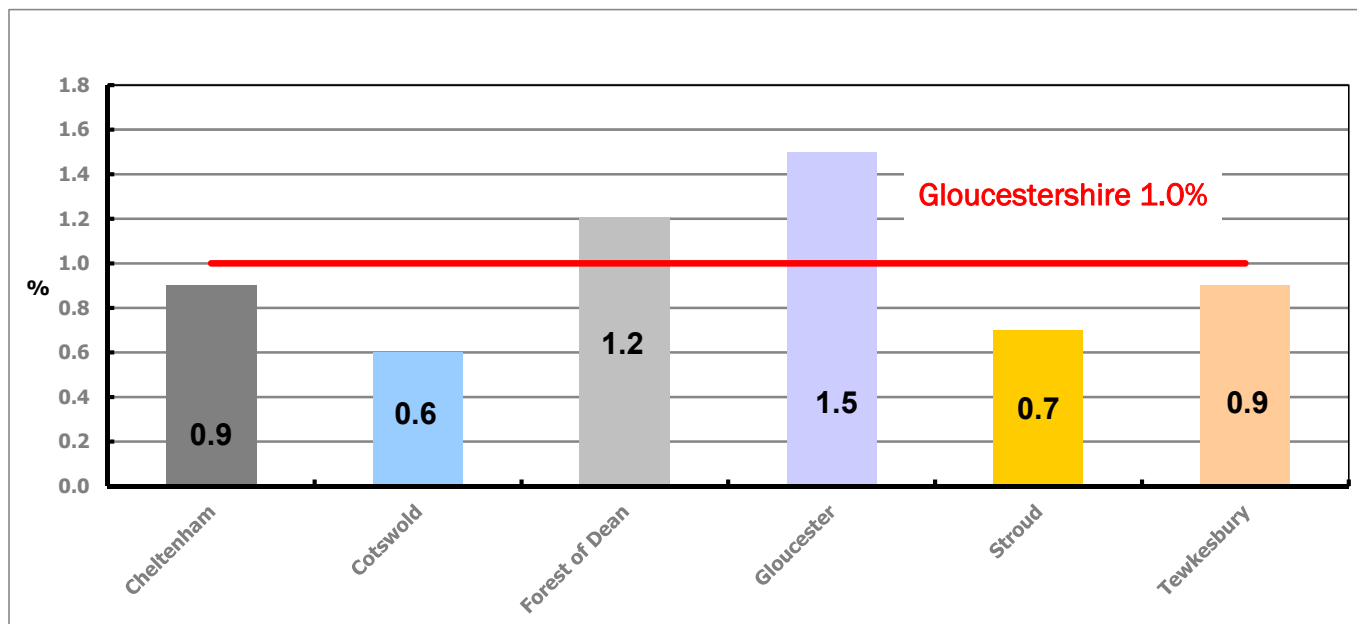


Figure 2 shows the claimant rate for December 2015 in Gloucestershire. Between November and December 2015, the rate in Cheltenham and Gloucester decreased, while the rate in the remaining four districts stayed the same.

Figure 3: Total claimants over the past year across Gloucestershire Districts

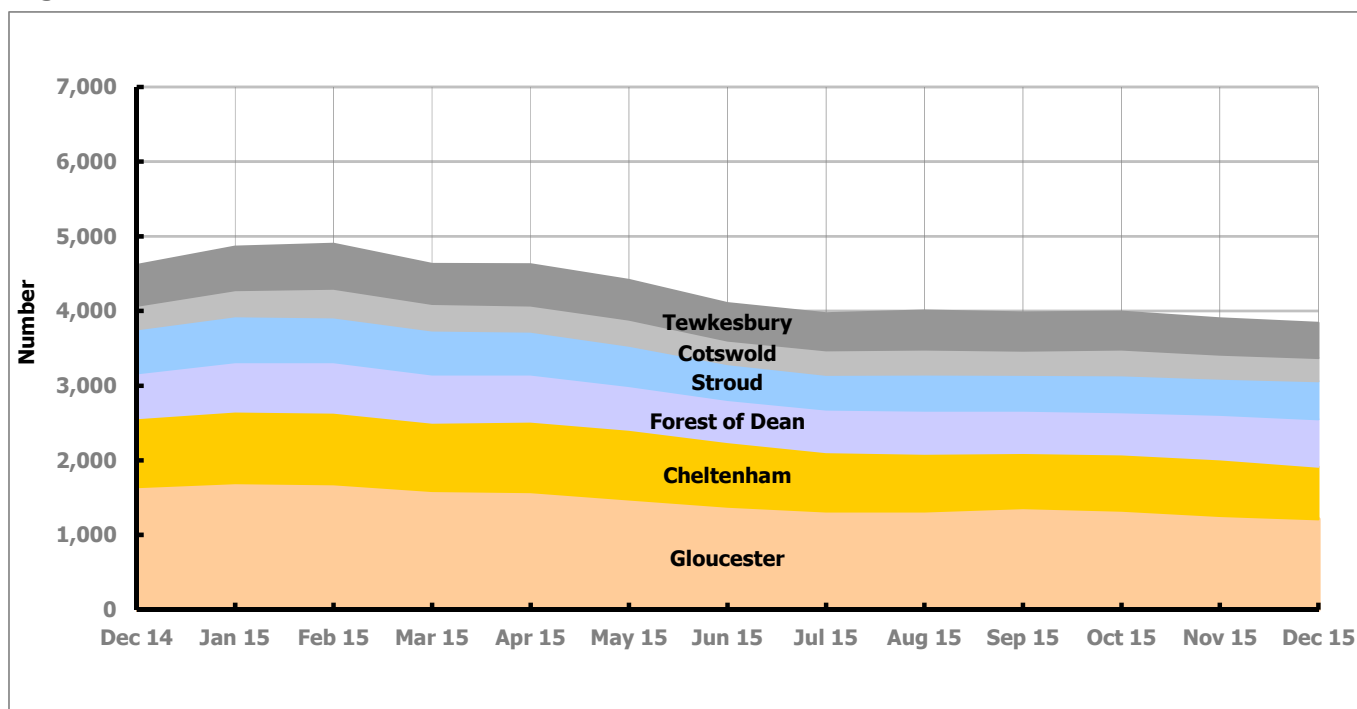


Figure 3 shows the overall claimant count by district over the past year. The number of claimants has decreased over the last year, with the exception of January, February, August and October 2015 when there was an increase.

Table 2: Analysis of Gloucestershire and District Claimant Counts

Total	Dec 15 Number	Dec 15 Rate	Nov 15 Number	Nov 15 Rate	Monthly change	% monthly change	Monthly change of rate
<b>Gloucestershire</b>	3,830	1.0	3,900	1.0	-70	-1.8%	0.0
Cheltenham	705	0.9	760	1.0	-55	-7.2%	-0.1
Cotswold	310	0.6	320	0.6	-10	-3.1%	0.0
Forest of Dean	635	1.2	595	1.2	40	6.7%	0.0
Gloucester	1,210	1.5	1,255	1.6	-45	-3.6%	-0.1
Stroud	510	0.7	485	0.7	25	5.2%	0.0
Tewkesbury	470	0.9	485	0.9	-15	-3.1%	0.0

Table 2 shows the change in the claimant count in December 2015 compared to November 2015. Forest of Dean and Stroud saw an increase in the number of claimants, while all other districts saw a decrease.

Table 3: Analysis of Male Gloucestershire and District Claimant Counts

Male	Dec 15 Number	Dec 15 Rate	Nov 15 Number	Nov 15 Rate	Monthly change	% monthly change	Monthly change of rate
<b>Gloucestershire</b>	2,560	1.4	2,585	1.4	-25	-1.0%	0.0
Cheltenham	480	1.3	510	1.3	-30	-5.9%	0.0
Cotswold	200	0.8	205	0.8	-5	-2.4%	0.0
Forest of Dean	425	1.7	405	1.6	20	4.9%	0.1
Gloucester	805	2.0	835	2.1	-30	-3.6%	-0.1
Stroud	340	1.0	325	0.9	15	4.6%	0.1
Tewkesbury	305	1.2	310	1.2	-5	-1.6%	0.0

Table 3 shows the change in the male claimant count in December 2015 compared to November 2015. Forest of Dean and Stroud saw an increase in the number of male claimants, while all other districts saw a decrease.

Table 4: Analysis of Female Gloucestershire and District Claimant Counts

Female	Dec 15 Number	Dec 15 Rate	Nov 15 Number	Nov 15 Rate	Monthly change	% monthly change	Monthly change of rate
<b>Gloucestershire</b>	1,270	0.7	1,310	0.7	-40	-3.1%	0.0
Cheltenham	225	0.6	255	0.7	-30	-11.8%	-0.1
Cotswold	110	0.4	115	0.4	-5	-4.3%	0.0
Forest of Dean	210	0.8	190	0.7	20	10.5%	0.1
Gloucester	400	1.0	420	1.0	-20	-4.8%	0.0
Stroud	170	0.5	160	0.5	10	6.3%	0.0
Tewkesbury	160	0.6	170	0.7	-10	-5.9%	-0.1

Table 4 shows the change in the female claimant count in December 2015 compared to November 2015. Forest of Dean and Stroud saw an increase in the number of female claimants, while all other districts saw a decrease.

## PART 4: LOCAL AUTHORITY DISTRICT AND WARD ANALYSIS

This section covers the six districts and a comparison of their constituent wards.

### 4.1 Cheltenham Borough

#### Claimant Rate and Claimant Count

Figure 4: Cheltenham Borough claimant rate over the last year

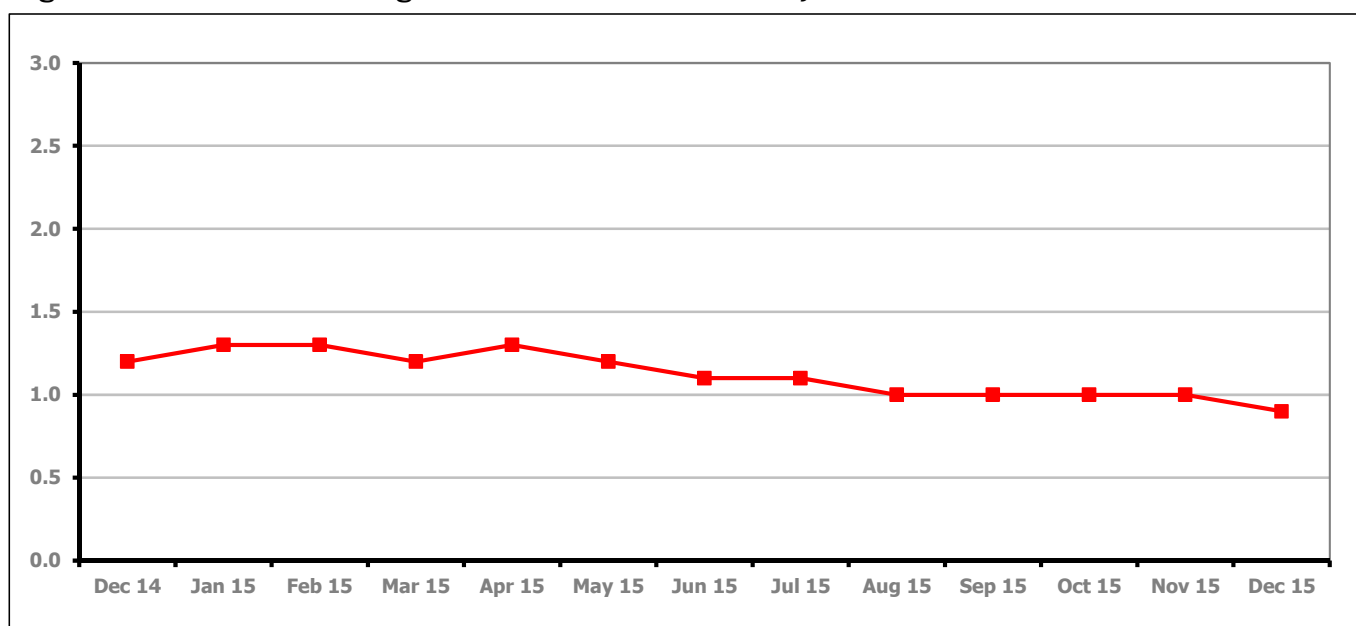


Figure 4 shows the claimant rate in Cheltenham decreased in December 2015 to 0.9%.

Figure 5: Cheltenham Borough claimants - Month on Month and Year on Year change

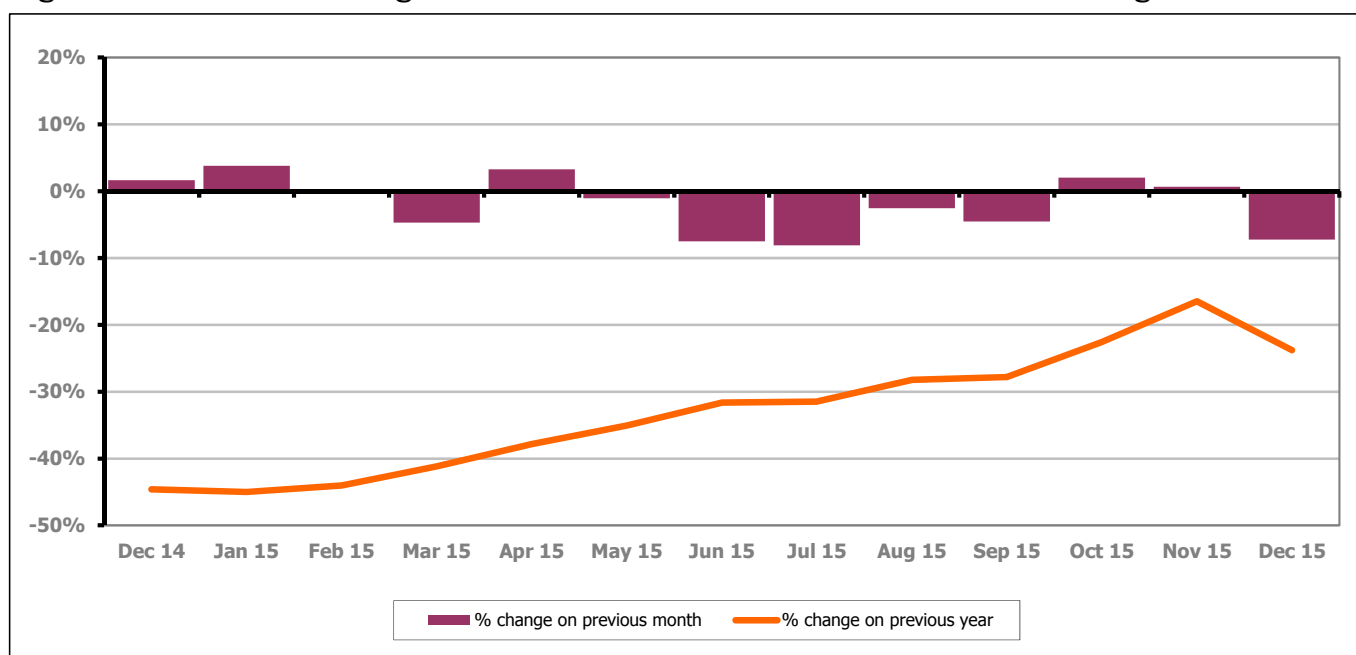


Figure 5 shows the claimant count decreased by 7.2% since last month. The change on the previous year has decreased between November and December 2015 to -23.8%.

## PART 4: LOCAL AUTHORITY DISTRICT AND WARD ANALYSIS

### 4.1 Cheltenham Borough continued...

Figure 6: Claimant rates across Cheltenham Borough wards - December 2015

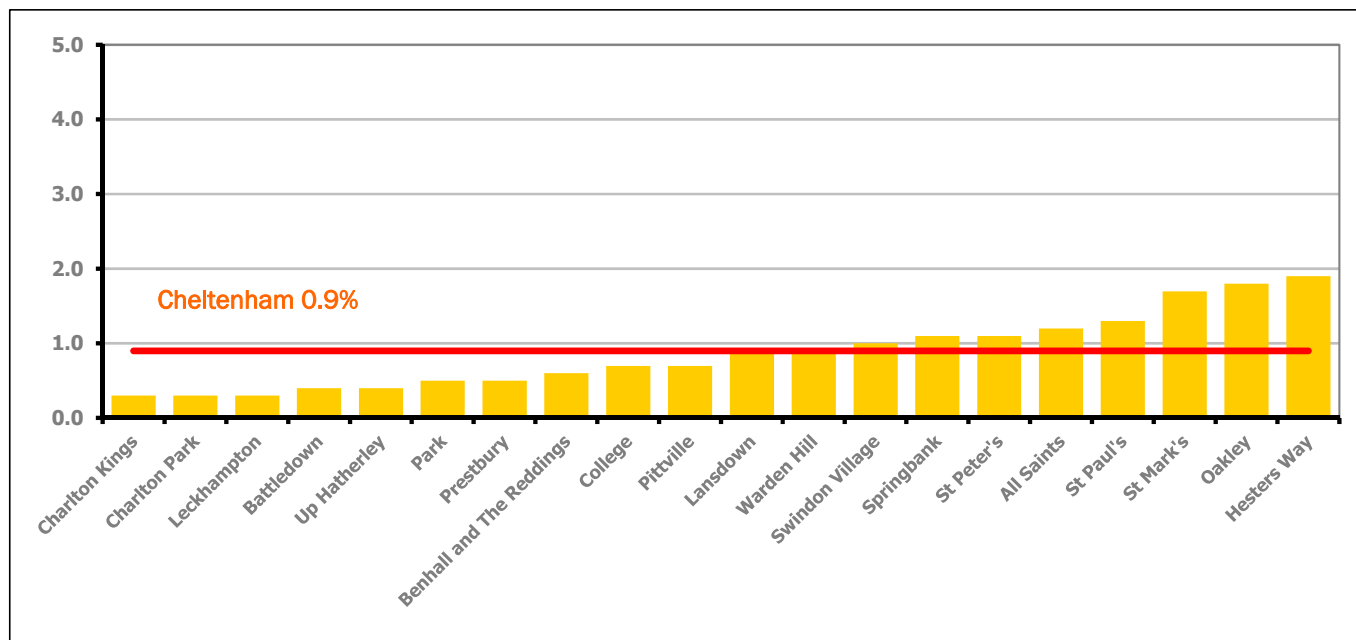
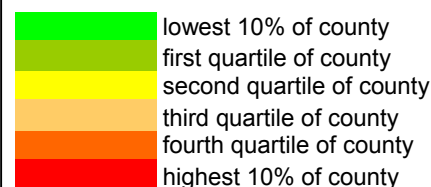


Figure 6 shows the claimant rates for Cheltenham Borough wards. The red line represents the average claimant rate across the Borough of 0.9%. Eight wards lie above the average.

Table 5: Analysis of Claimant Count at Cheltenham Borough ward level - December 2015

District	Ward	Rate	Rank*
Cheltenham	Charlton Kings	0.3	8
Cheltenham	Charlton Park	0.3	8
Cheltenham	Leckhampton	0.3	8
Cheltenham	Battledown	0.4	20
Cheltenham	Up Hatherley	0.4	20
Cheltenham	Park	0.5	38
Cheltenham	Prestbury	0.5	38
Cheltenham	Benhall and The Reddings	0.6	50
Cheltenham	College	0.7	66
Cheltenham	Pittville	0.7	66
Cheltenham	Lansdown	0.9	83
Cheltenham	Warden Hill	0.9	83
Cheltenham	Swindon Village	1.0	102
Cheltenham	Springbank	1.1	106
Cheltenham	St Peter's	1.1	106
Cheltenham	All Saints	1.2	113
Cheltenham	St Paul's	1.3	118
Cheltenham	St Mark's	1.7	127
Cheltenham	Oakley	1.8	129
Cheltenham	Hesters Way	1.9	133



\* 1 = "best" and 142 = "worst"

Table 5 shows overall claimant rates for Cheltenham Borough wards and their position relative to all wards in Gloucestershire.

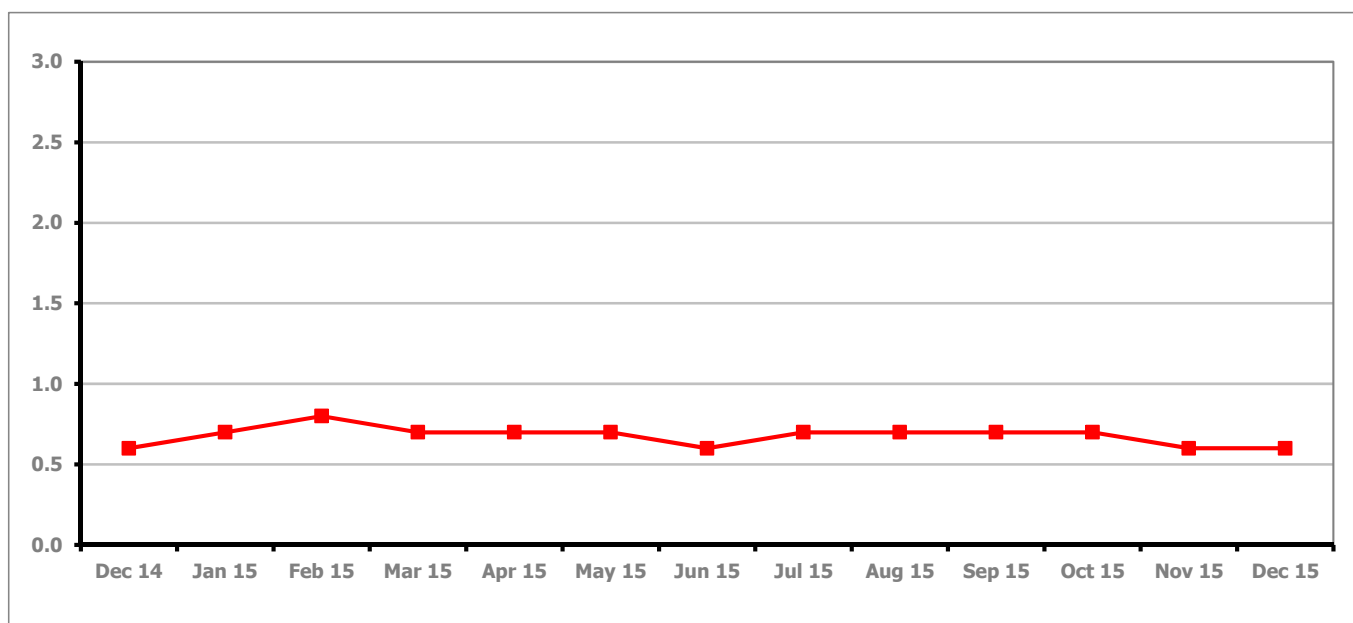
**PART 4: LOCAL AUTHORITY DISTRICT AND WARD ANALYSIS****4.2 Cotswold District****Claimant Rate and Claimant Count***Figure 7: Cotswold District claimant rate over the last year*

Figure 7 shows the claimant rate in Cotswold District remained the same as last month at 0.6%.

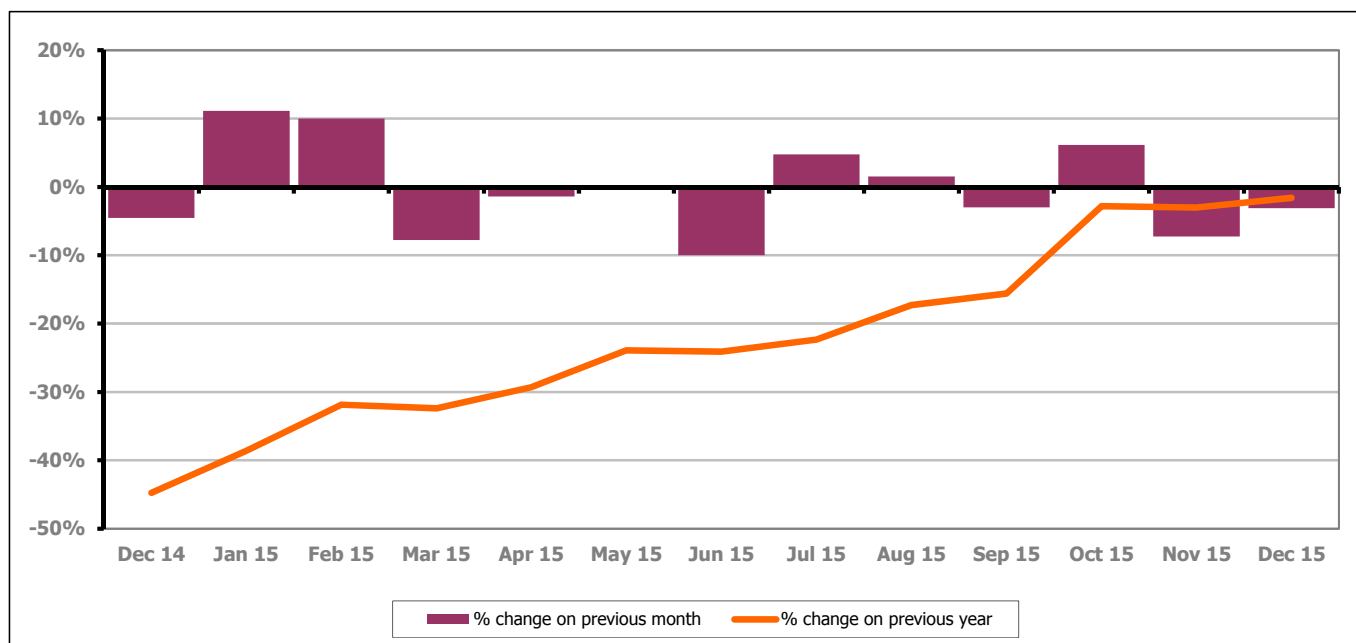
*Figure 8: Cotswold District claimants - Month on Month and Year on Year change*

Figure 8 shows the claimant count decreased by 3.1% since last month. The change on the previous year has increased between November and December 2015 to -1.6%.



## PART 4: LOCAL AUTHORITY DISTRICT AND WARD ANALYSIS

### 4.2 Cotswold District continued...

Figure 9: Claimant rates across Cotswold District wards - December 2015

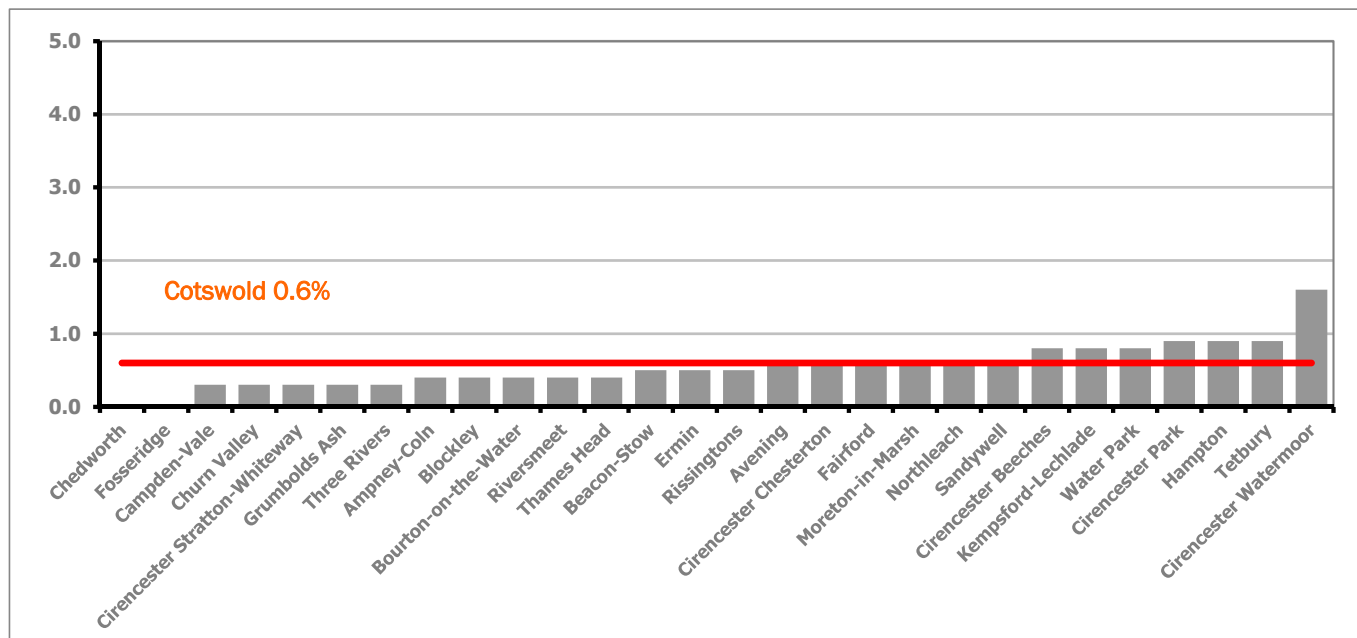
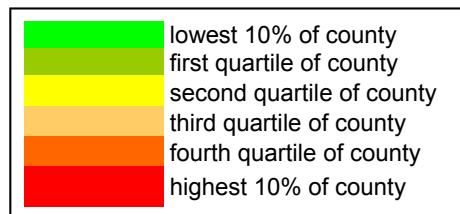


Figure 9 shows the claimant rates for Cotswold District wards. The red line represents the average claimant rate across the District of 0.6%. Seven wards lie above the average.

Table 6: Analysis of Claimant Count at Cotswold District ward level - December 2015

District	Ward	Rate	Rank*
Cotswolds	Chedworth	<0.3	1
Cotswolds	Fosseridge	<0.3	1
Cotswolds	Campden-Vale	0.3	8
Cotswolds	Churn Valley	0.3	8
Cotswolds	Cirencester Stratton-Whiteway	0.3	8
Cotswolds	Grumbolds Ash	0.3	8
Cotswolds	Three Rivers	0.3	8
Cotswolds	Ampney-Coln	0.4	20
Cotswolds	Blockley	0.4	20
Cotswolds	Bourton-on-the-Water	0.4	20
Cotswolds	Riversmeet	0.4	20
Cotswolds	Thames Head	0.4	20
Cotswolds	Beacon-Stow	0.5	38
Cotswolds	Ermin	0.5	38
Cotswolds	Risingtons	0.5	38
Cotswolds	Avening	0.6	50
Cotswolds	Cirencester Chesterton	0.6	50
Cotswolds	Fairford	0.6	50
Cotswolds	Moreton-in-Marsh	0.6	50
Cotswolds	Northleach	0.6	50
Cotswolds	Sandywell	0.6	50
Cotswolds	Cirencester Beeches	0.8	77
Cotswolds	Kempsford-Lechlade	0.8	77
Cotswolds	Water Park	0.8	77
Cotswolds	Cirencester Park	0.9	83
Cotswolds	Hampton	0.9	83
Cotswolds	Tetbury	0.9	83
Cotswolds	Cirencester Watermoor	1.6	125



\* 1 = "best" and 142 = "worst"

Table 6 shows overall claimant rates for Cotswold District wards and their position relative to all wards in Gloucestershire.

## PART 4: LOCAL AUTHORITY DISTRICT AND WARD ANALYSIS

### 4.3 Forest of Dean District

#### Claimant Rate and Claimant Count

Figure 10: Forest of Dean District claimant rate over the last year

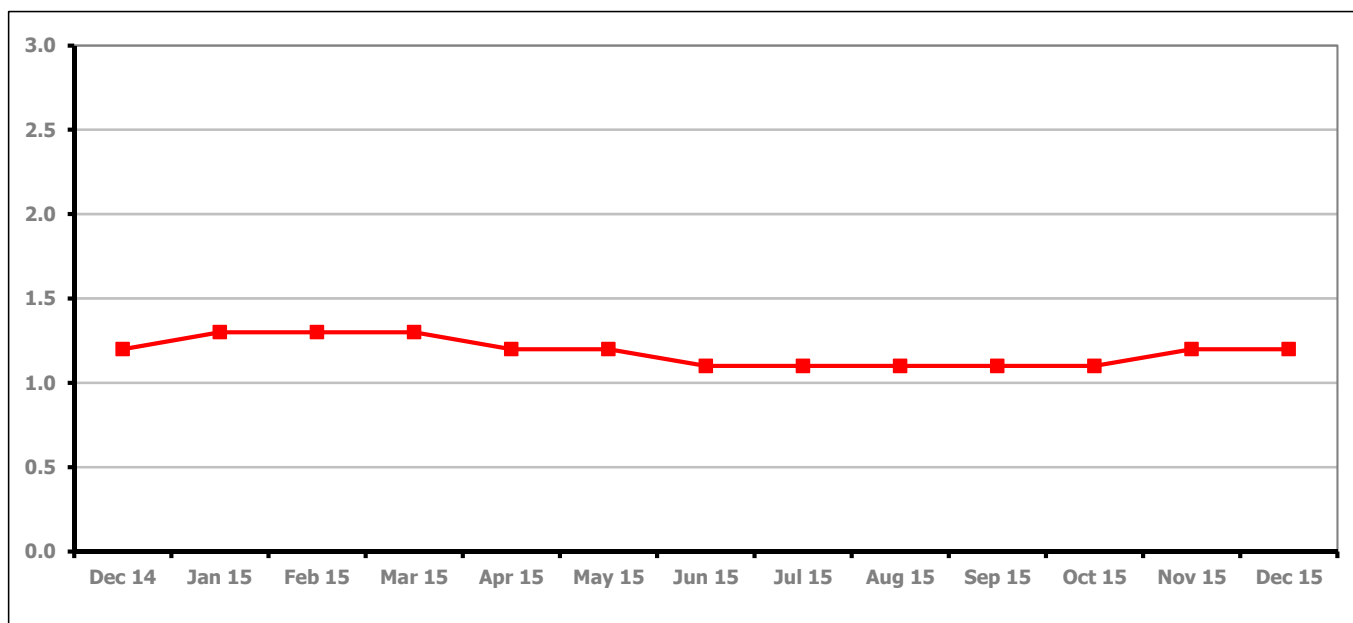


Figure 10 shows the claimant rate in the Forest of Dean stayed the same as last month at 1.2%.

Figure 11: Forest of Dean District claimants - Month on Month and Year on Year change

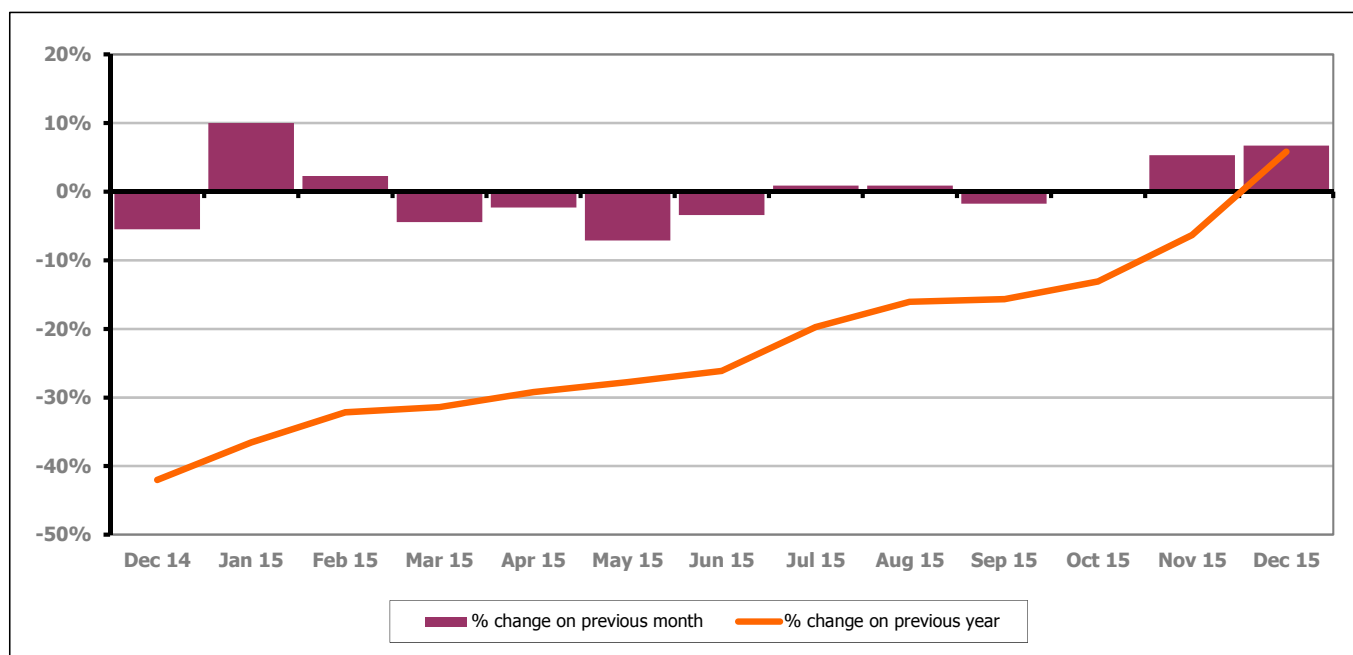


Figure 11 shows the claimant count increased by 6.7% since November 2015. The change on the previous year has increased between November and December 2015 to 5.8%.

## PART 4: LOCAL AUTHORITY DISTRICT AND WARD ANALYSIS

### 4.3 Forest of Dean District continued...

Figure 12: Claimant rates across Forest of Dean District wards - December 2015

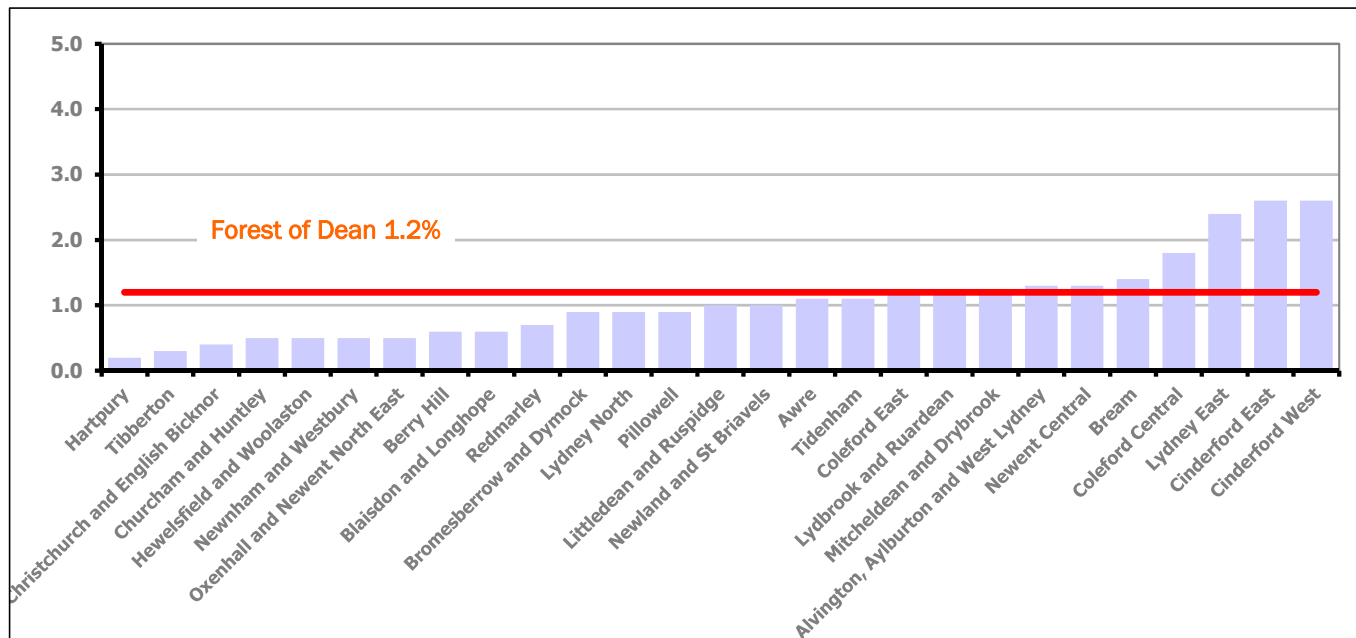
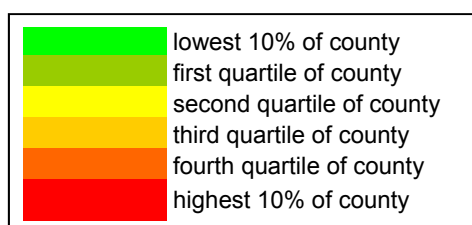


Figure 12 shows the claimant rates for Forest of Dean District wards. The red line represents the average claimant rate across the District of 1.2%. Seven wards lie above the average.

Table 7: Analysis of Claimant Count at Forest of Dean District ward level - December 2015

District	Ward	Rate	Rank*
Forest	Hartpury	0.2	7
Forest	Tibberton	0.3	8
Forest	Christchurch and English Bicknor	0.4	20
Forest	Churcham and Huntley	0.5	38
Forest	Hewelsfield and Woolaston	0.5	38
Forest	Newnham and Westbury	0.5	38
Forest	Oxenhall and Newent North East	0.5	38
Forest	Berry Hill	0.6	50
Forest	Blaisdon and Longhope	0.6	50
Forest	Redmarley	0.7	66
Forest	Bromesberrow and Dymock	0.9	83
Forest	Lydney North	0.9	83
Forest	Pillowell	0.9	83
Forest	Littledean and Ruspidge	1.0	102
Forest	Newland and St Briavels	1.0	102
Forest	Awre	1.1	106
Forest	Tidenham	1.1	106
Forest	Coleford East	1.2	113
Forest	Lydbrook and Ruardean	1.2	113
Forest	Mitcheldean and Drybrook	1.2	113
Forest	Alvington, Aylburton and West Lydney	1.3	118
Forest	Newent Central	1.3	118
Forest	Bream	1.4	123
Forest	Coleford Central	1.8	129
Forest	Lydney East	2.4	135
Forest	Cinderford East	2.6	136
Forest	Cinderford West	2.6	136



\* 1 = "best" and 142 = "worst"

Table 7 shows overall claimant rates for the Forest of Dean District wards and their position relative to all wards in Gloucestershire.

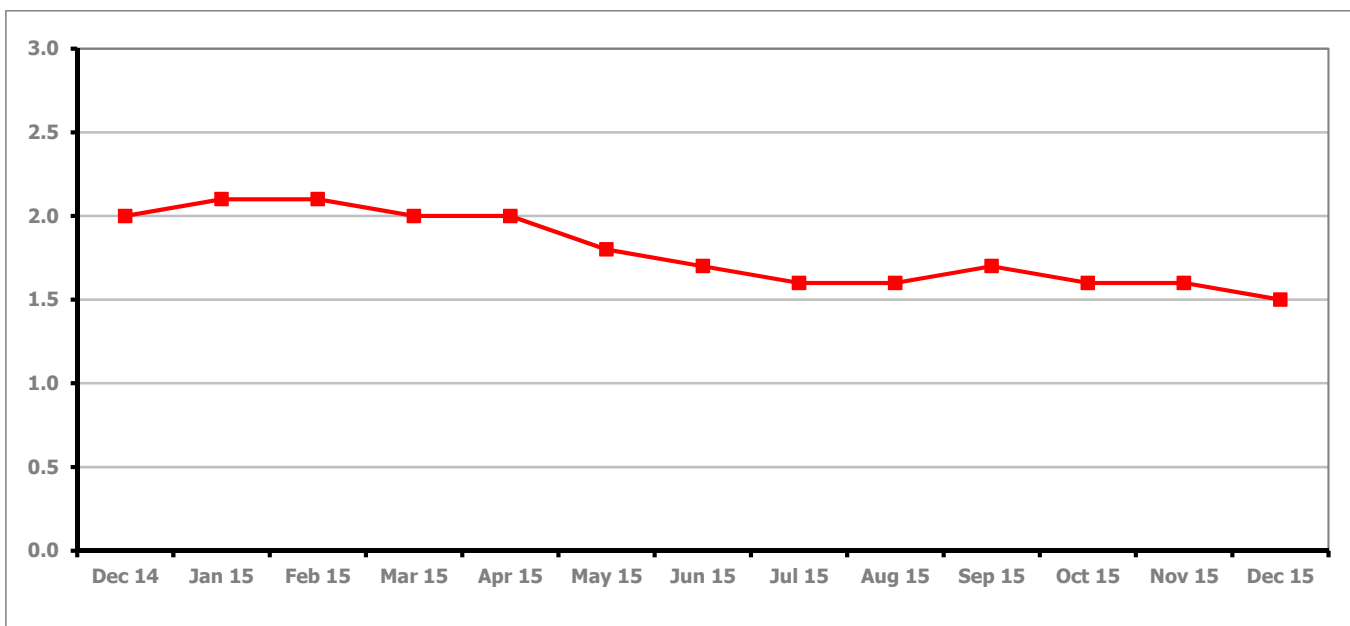
**PART 4: LOCAL AUTHORITY DISTRICT AND WARD ANALYSIS****4.4 Gloucester City****Claimant Rate and Claimant Count***Figure 13: Gloucester City claimant rate over the last year*

Figure 13 shows the claimant rate for Gloucester City decreased in December 2015 to 1.5%.

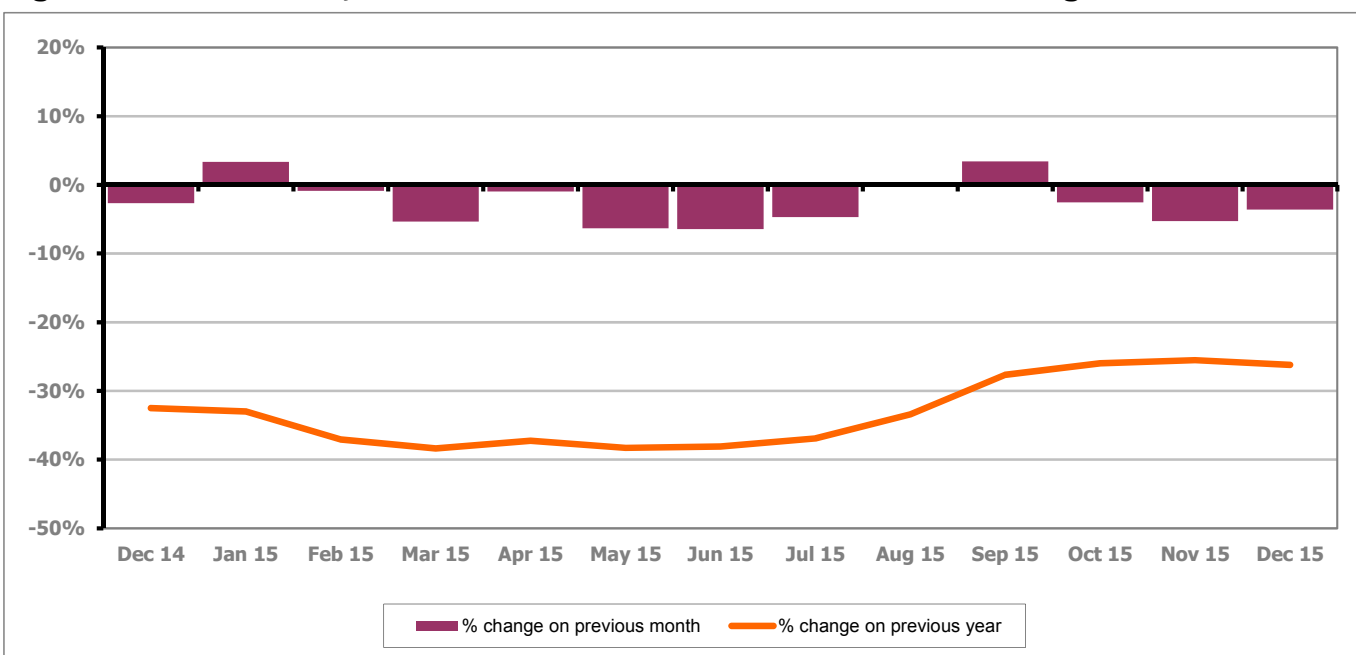
*Figure 14: Gloucester City claimants - Month on Month and Year on Year change*

Figure 14 shows the monthly claimant count decreased by 3.6% since November 2015. The change on the previous year has decreased between November and December 2015 to -26.2%.

## PART 4: LOCAL AUTHORITY DISTRICT AND WARD ANALYSIS

### 4.4 Gloucester City continued...

Figure 15: Claimant rates across Gloucester City wards - December 2015

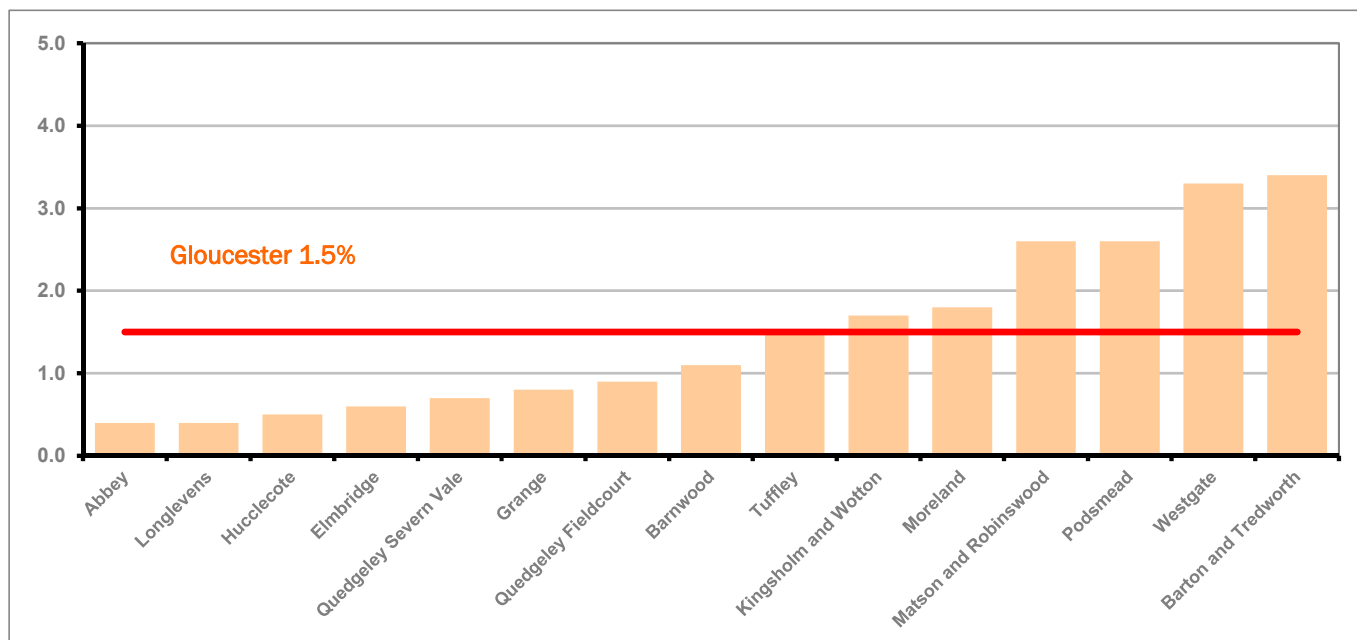
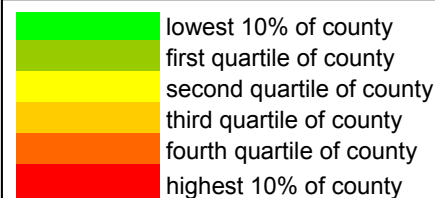


Figure 15 shows the claimant rates for Gloucester City district wards. The red line represents the average claimant rate across the City of 1.5%. Six wards lie above the average.

Table 8: Analysis of Claimant Count at Gloucester City ward level - December 2015

District	Ward	Rate	Rank*
Gloucester	Abbey	0.4	20
Gloucester	Longlevens	0.4	20
Gloucester	Hucclecote	0.5	38
Gloucester	Elmbridge	0.6	50
Gloucester	Quedgeley Severn Vale	0.7	66
Gloucester	Grange	0.8	77
Gloucester	Quedgeley Fieldcourt	0.9	83
Gloucester	Barnwood	1.1	106
Gloucester	Tuffley	1.5	124
Gloucester	Kingsholm and Wotton	1.7	127
Gloucester	Moreland	1.8	129
Gloucester	Matson and Robinswood	2.6	136
Gloucester	Podsmead	2.6	136
Gloucester	Westgate	3.3	141
Gloucester	Barton and Tredworth	3.4	142



\* 1 = "best" and 142 = "worst"

Table 8 shows overall claimant rates for Gloucester City wards and their position relative to all wards in Gloucestershire.

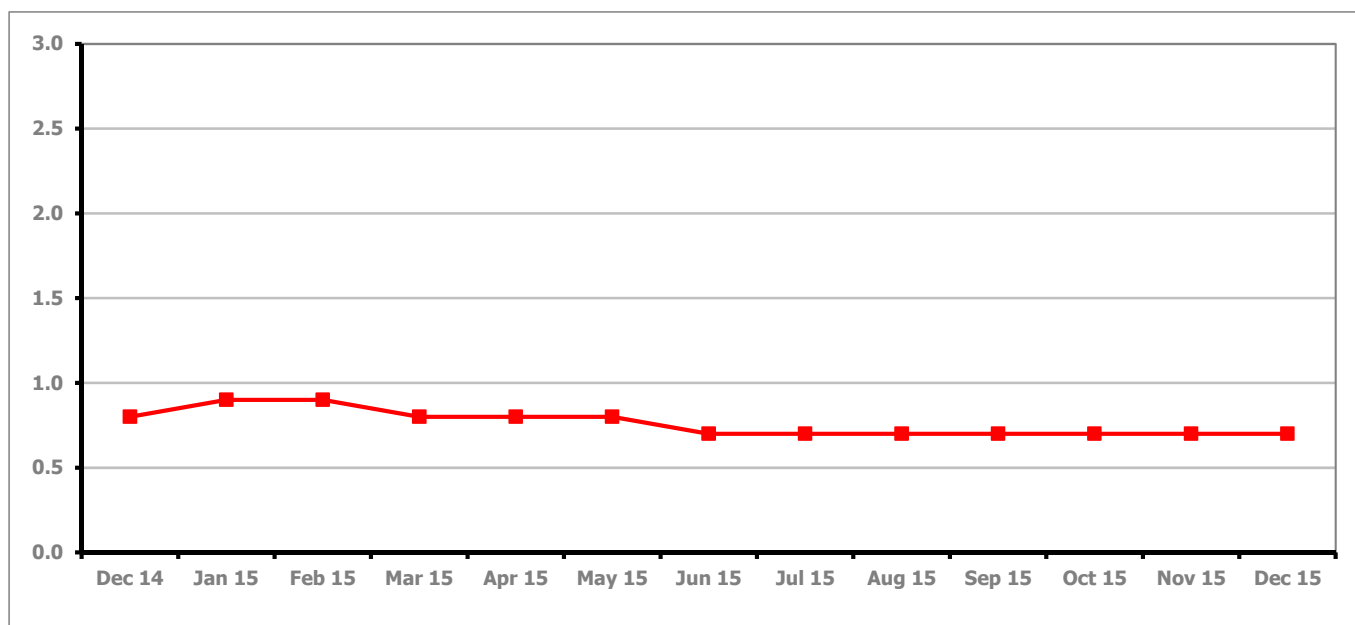
**PART 4: LOCAL AUTHORITY DISTRICT AND WARD ANALYSIS****4.5 Stroud District****Claimant Rate and Claimant Count***Figure 16: Stroud District claimant rate over the last year*

Figure 16 shows the claimant rate for Stroud remained the same as last month at 0.7%.

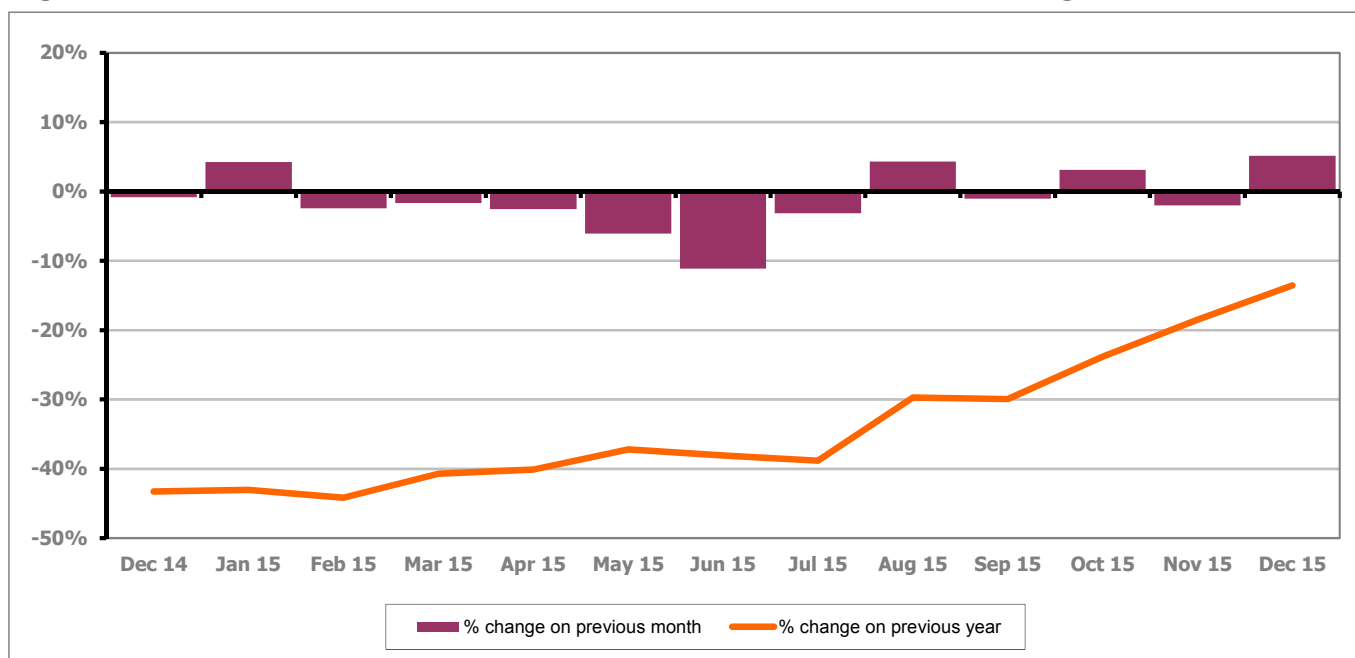
*Figure 17: Stroud District claimants - Month on Month and Year on Year change*

Figure 17 shows the monthly claimant count increased by 5.2% since November 2015. The change on the previous year has increased between November and December 2015 to -13.6%.

## PART 4: LOCAL AUTHORITY AND DISTRICT ANALYSIS

### 4.5 Stroud District continued...

Figure 18: Claimant rates across Stroud District wards - December 2015

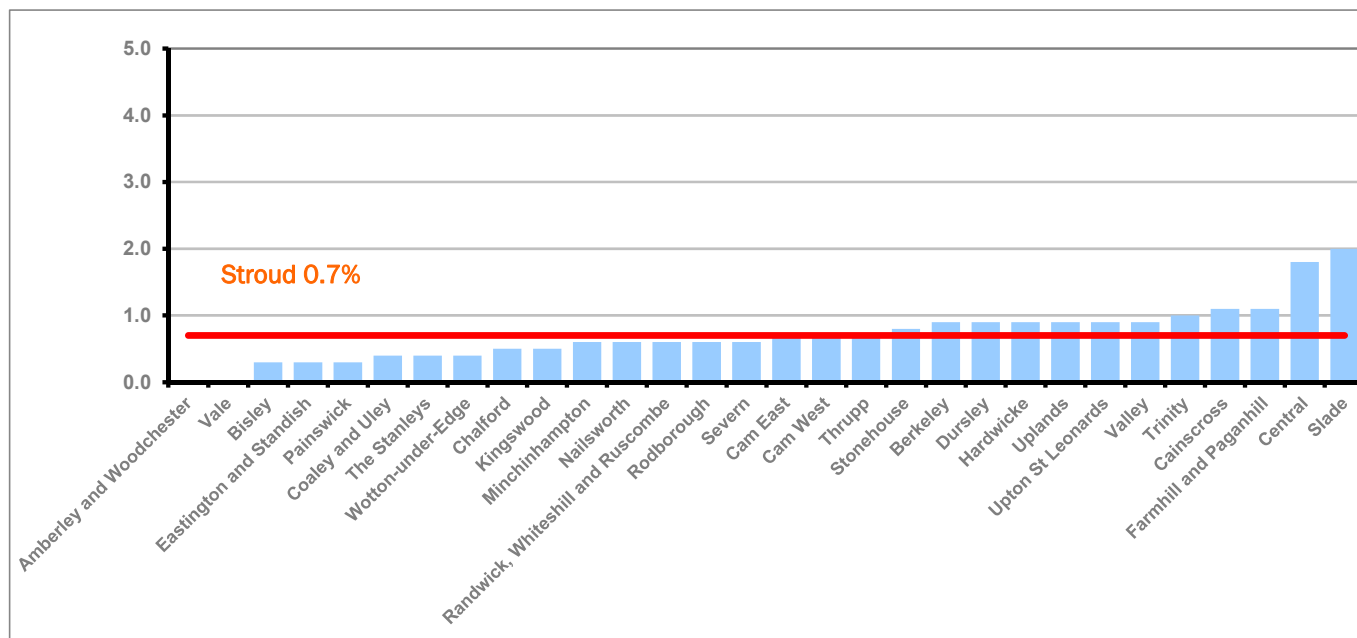
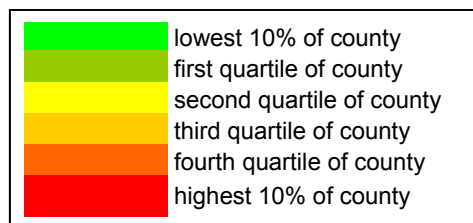


Figure 18 shows the claimant rates in Stroud District wards. The red line represents the average claimant rate across the District of 0.7%. Twelve wards are above the average.

Table 9: Analysis of Claimant Count at Stroud District ward level - December 2015

District	Ward	Rate	Rank*
Stroud	Amberley and Woodchester	<0.3	1
Stroud	Vale	<0.3	1
Stroud	Bisley	0.3	8
Stroud	Eastington and Standish	0.3	8
Stroud	Painswick	0.3	8
Stroud	Coaley and Uley	0.4	20
Stroud	The Stanleys	0.4	20
Stroud	Wotton-under-Edge	0.4	20
Stroud	Chalford	0.5	38
Stroud	Kingswood	0.5	38
Stroud	Minchinhampton	0.6	50
Stroud	Nailsworth	0.6	50
Stroud	Randwick, Whiteshill and Ruscombe	0.6	50
Stroud	Rodborough	0.6	50
Stroud	Severn	0.6	50
Stroud	Cam East	0.7	66
Stroud	Cam West	0.7	66
Stroud	Thrupp	0.7	66
Stroud	Stonehouse	0.8	77
Stroud	Berkeley	0.9	83
Stroud	Dursley	0.9	83
Stroud	Hardwicke	0.9	83
Stroud	Uplands	0.9	83
Stroud	Upton St Leonards	0.9	83
Stroud	Valley	0.9	83
Stroud	Trinity	1.0	102
Stroud	Cainscross	1.1	106
Stroud	Farmhill and Paganhill	1.1	106
Stroud	Central	1.8	129
Stroud	Slade	2.0	134



\* 1 = "best" and 142 = "worst"

Table 9 shows overall claimant rates for Stroud District wards and their position relative to all wards in Gloucestershire.

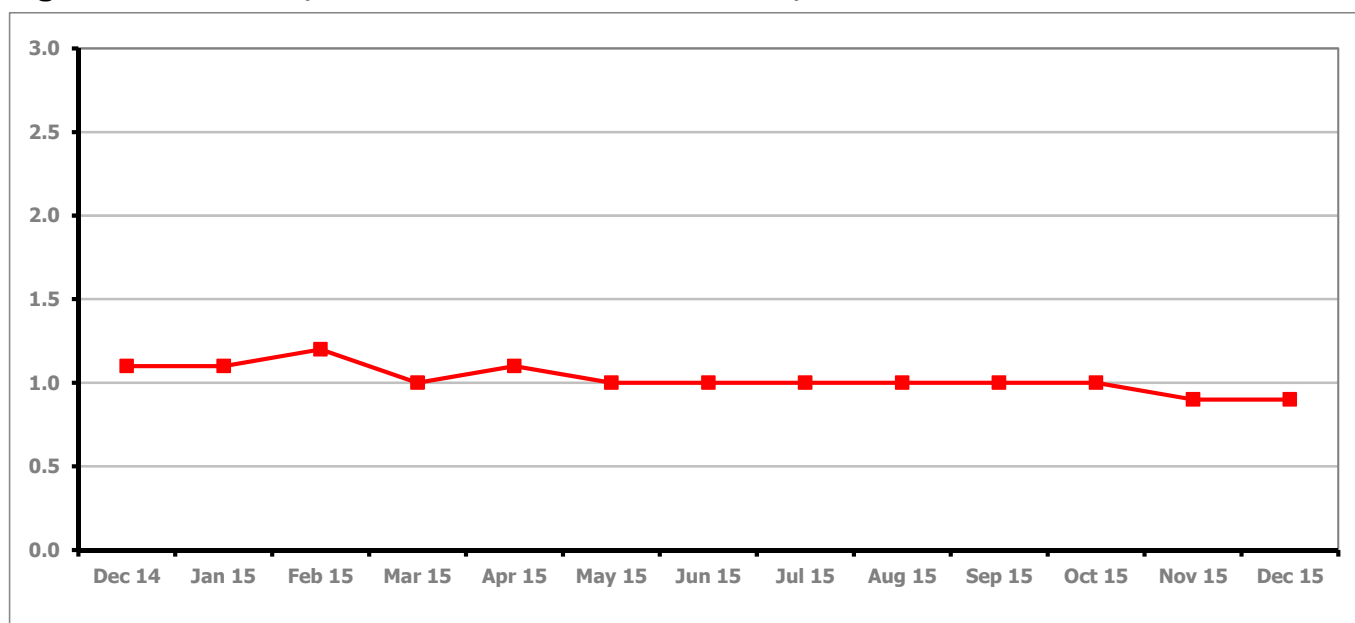
**PART 4: LOCAL AUTHORITY DISTRICT AND WARD ANALYSIS****4.6 Tewkesbury District****Claimant Rate and Claimant Count***Figure 19: Tewkesbury District claimant rate over the last year*

Figure 19 shows the claimant rate for Tewkesbury District stayed the same as last month at 0.9%.

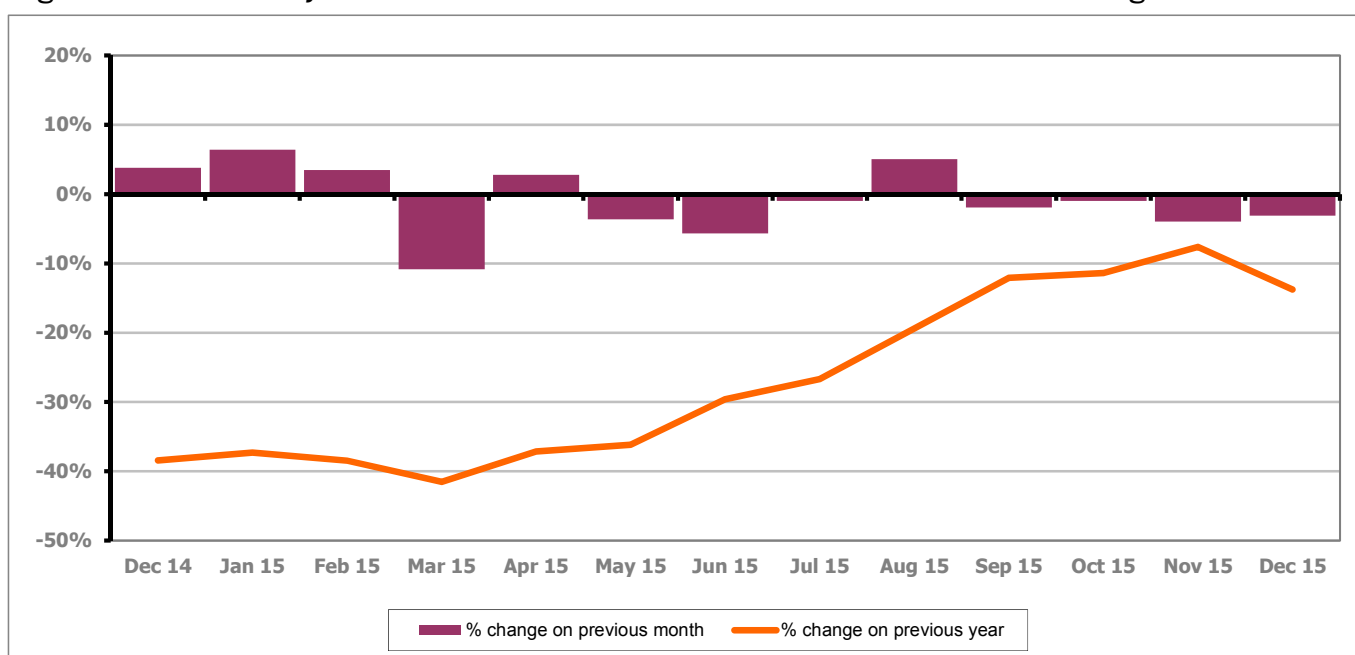
*Figure 20: Tewkesbury District claimants - Month on Month and Year on Year change*

Figure 20 shows that the monthly claimant count decreased by 3.1% since November 2015. The change on the previous year decreased between November and December 2015 to -13.8%.



## PART 4: LOCAL AUTHORITY AND DISTRICT ANALYSIS

### 4.6 Tewkesbury District continued...

Figure 21: Claimant rates across Tewkesbury District wards - December 2015

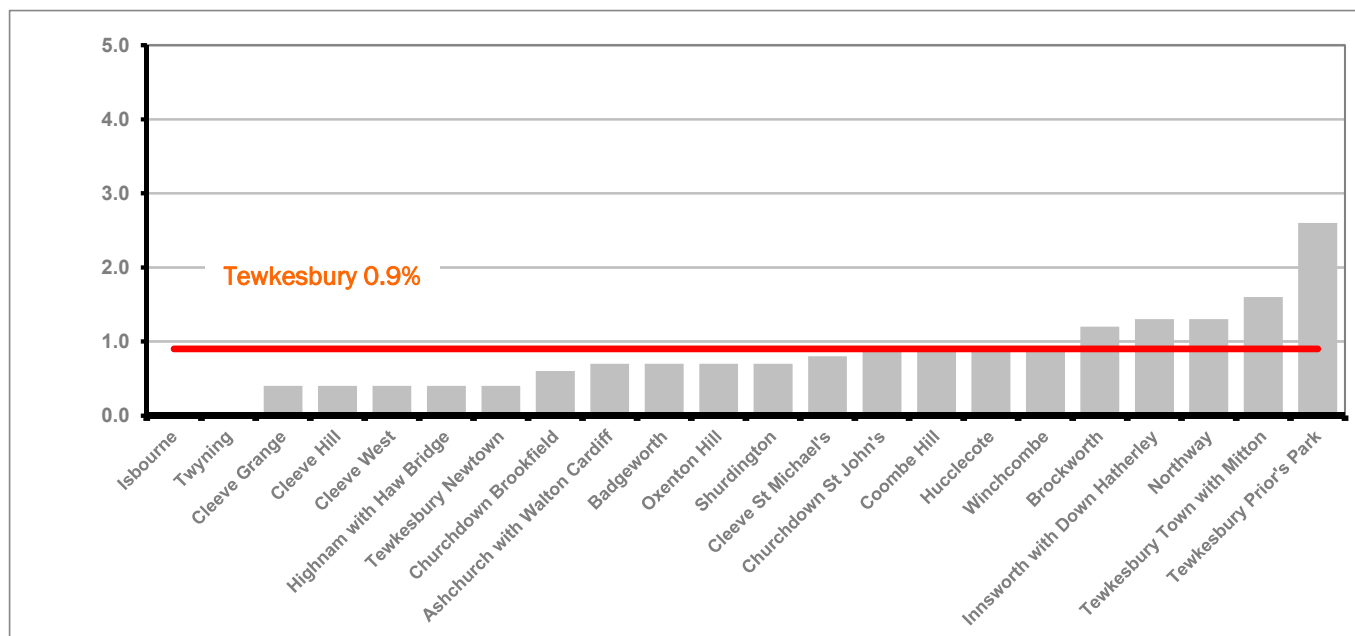
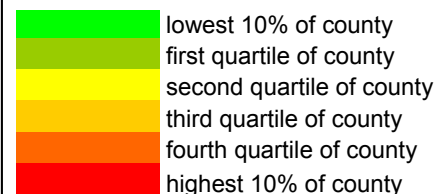


Figure 21 shows the claimant rates in Tewkesbury District wards. The red line represents the average claimant rate across the District of 0.9% and five wards are above the average.

Table 10: Analysis of Claimant Count at Tewkesbury District level - December 2015

District	Ward	Rate	Rank*
Tewkesbury	Isbourne	<0.3	1
Tewkesbury	Twyning	<0.3	1
Tewkesbury	Cleeve Grange	0.4	20
Tewkesbury	Cleeve Hill	0.4	20
Tewkesbury	Cleeve West	0.4	20
Tewkesbury	Highnam with Haw Bridge	0.4	20
Tewkesbury	Tewkesbury Newtown	0.4	20
Tewkesbury	Churchdown Brookfield	0.6	50
Tewkesbury	Ashchurch with Walton Cardiff	0.7	66
Tewkesbury	Badgeworth	0.7	66
Tewkesbury	Oxenton Hill	0.7	66
Tewkesbury	Shurdington	0.7	66
Tewkesbury	Cleeve St Michael's	0.8	77
Tewkesbury	Churchdown St John's	0.9	83
Tewkesbury	Coombe Hill	0.9	83
Tewkesbury	Hucclecote	0.9	83
Tewkesbury	Winchcombe	0.9	83
Tewkesbury	Brockworth	1.2	113
Tewkesbury	Innsworth with Down Hatherley	1.3	118
Tewkesbury	Northway	1.3	118
Tewkesbury	Tewkesbury Town with Mitton	1.6	125
Tewkesbury	Tewkesbury Prior's Park	2.6	136

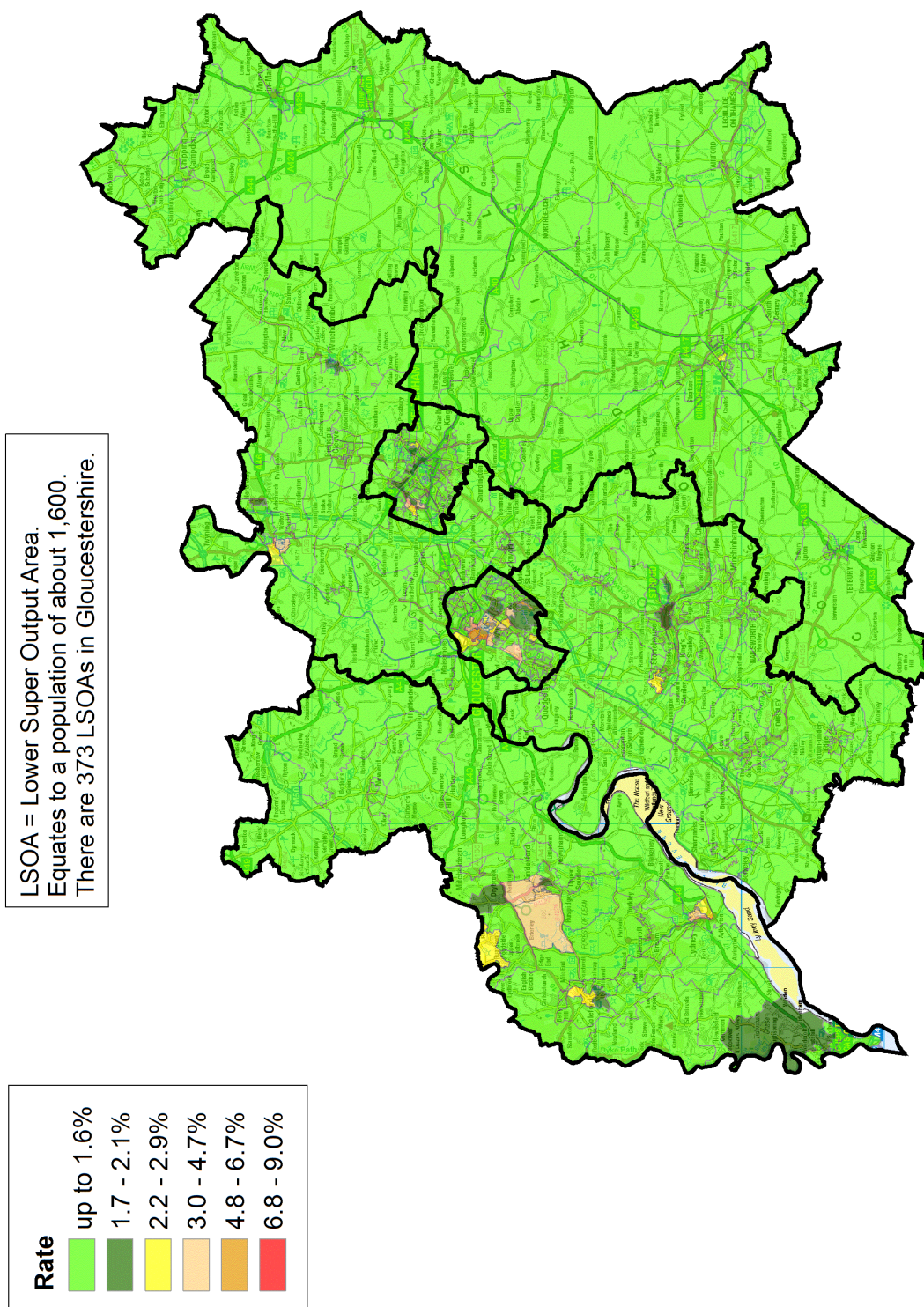


\* 1 = "best" and 142 = "worst"

Table 10 shows overall claimant rates for Tewkesbury District wards and their position relative to all wards in Gloucestershire.

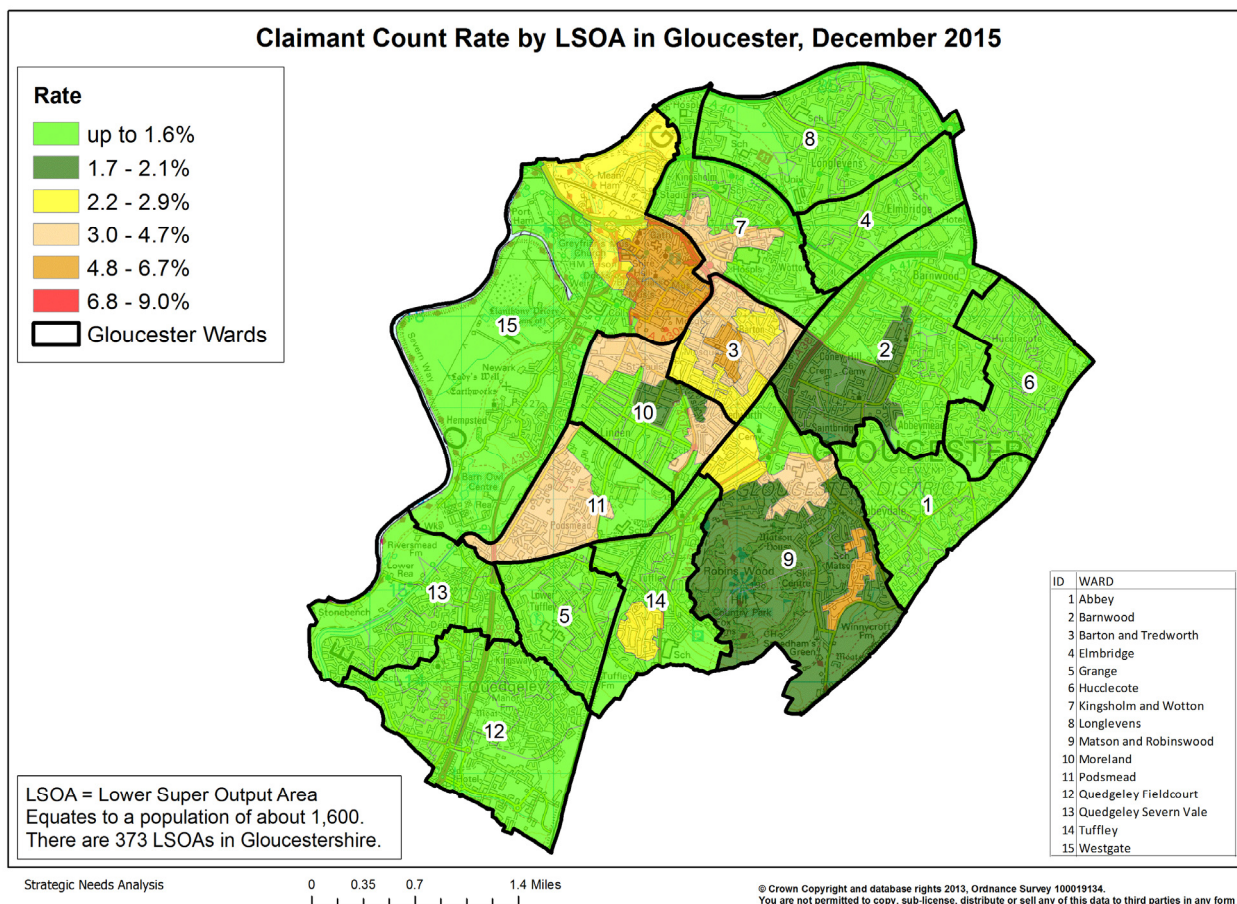
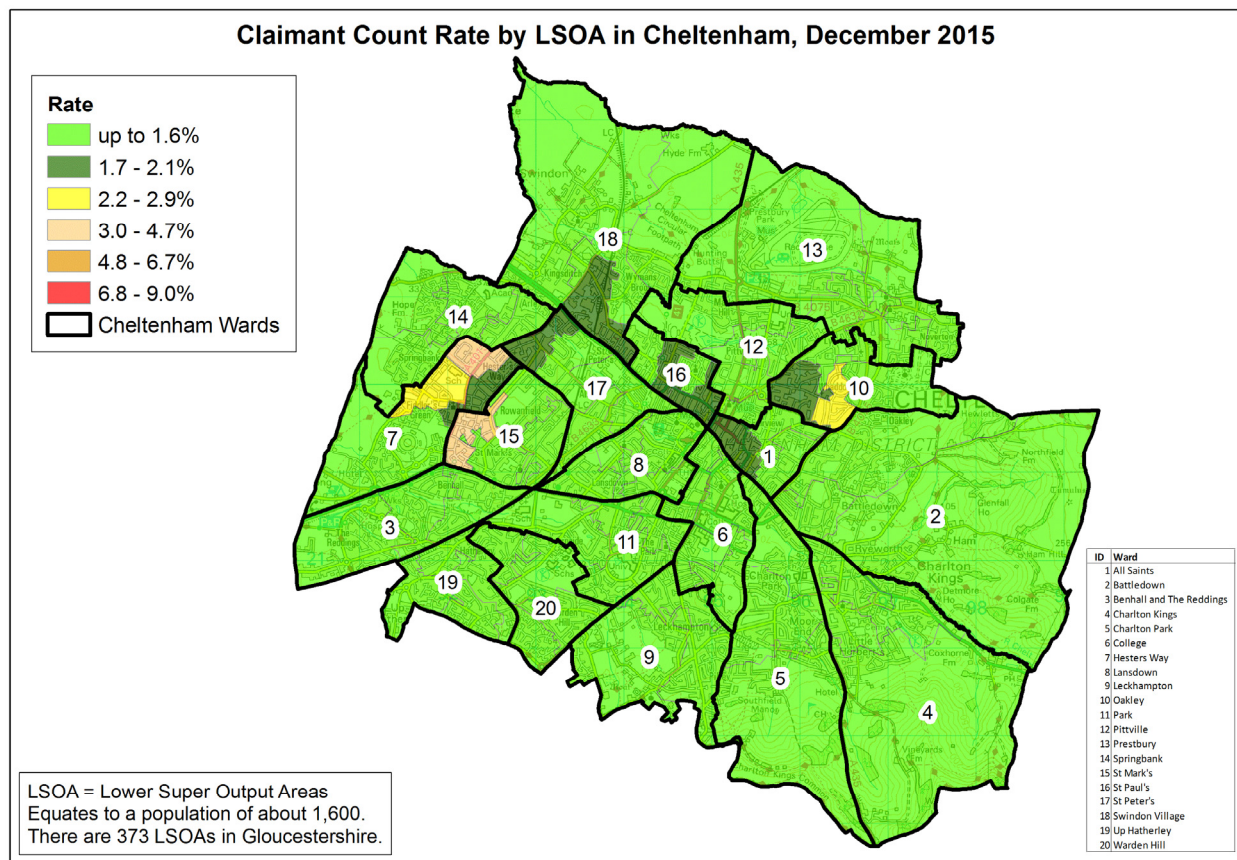
## PART 5: MAP SHOWING DISTRIBUTION OF CLAIMANT RATE ACROSS GLOUCESTERSHIRE

### Claimant Count Rate by LSOA in Gloucestershire, December 2015





## PART 5: MAP SHOWING DISTRIBUTION OF CLAIMANT RATE ACROSS GLOUCESTERSHIRE



## PART 6: YOUTH UNEMPLOYMENT(18-24 year olds)

### Youth Claimant Rate and Claimant Count

Figure 22: Claimant Count for Gloucestershire over the past year

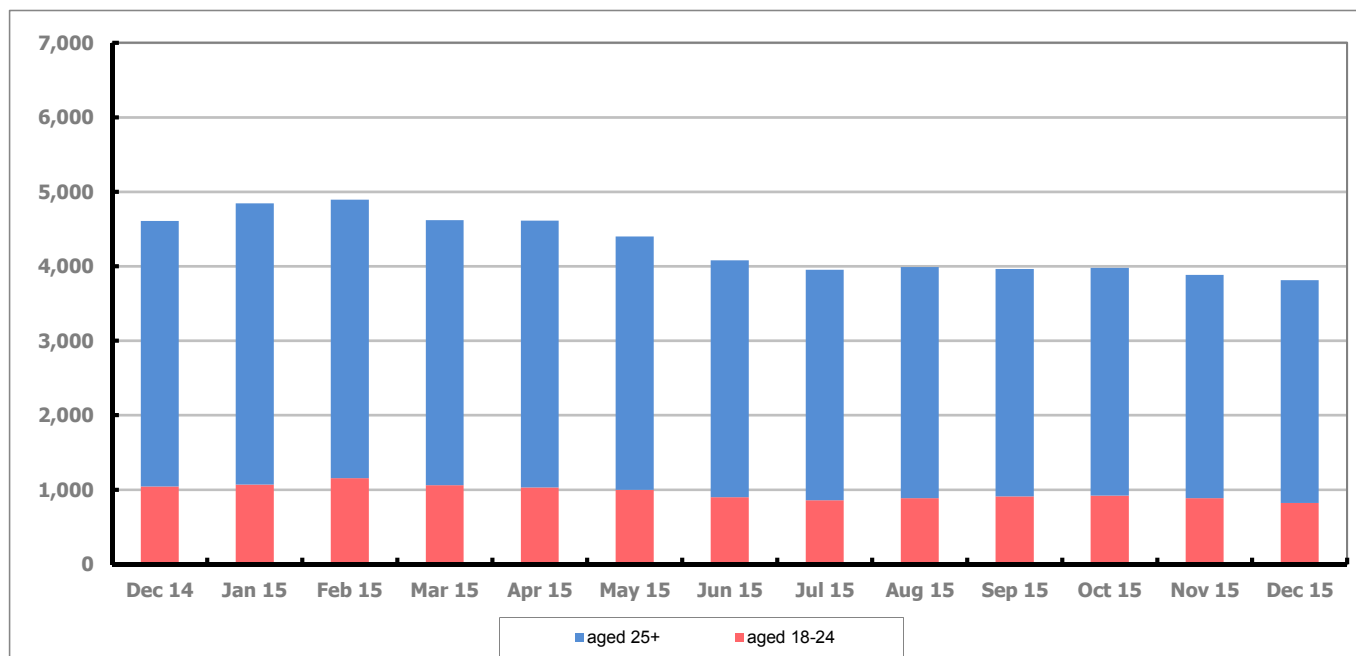


Figure 22 shows that in December 2015, 825 people aged 18-24 were claiming Job Seekers Allowance and Universal Credit who were not in work in Gloucestershire, this represents 21.5% of total working age claimants.

Figure 23: Youth Claimant Rate for Gloucestershire, the South West and UK over the past year

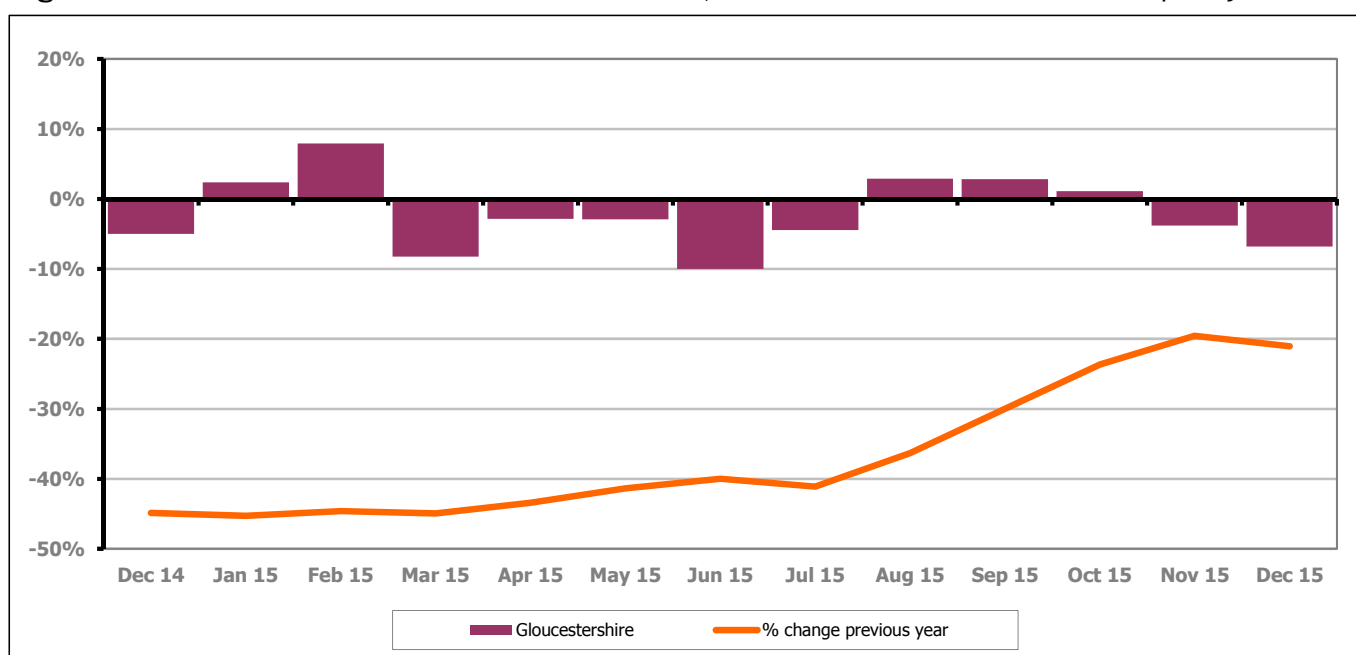


Figure 23 shows the number of young claimants decreased in December 2015 by 6.8% this represented 60 people. Over the last year the number of young claimants fell by 21.1% or 220 people.

## PART 7: YOUNG PEOPLE NOT IN EDUCATION, EMPLOYMENT OR TRAINING (NEET) IN GLOUCESTERSHIRE

Data provided by Gloucestershire Youth Support Team on the situation of young people (16-18) in Gloucestershire who are not in education, employment or formal training.

Gloucestershire Youth Support Team is required to report performance with the 16-18 age range against nationally defined criteria for counting the NEET group. The NEET group includes young people actively seeking education, employment or training as well as those young people who are either not yet ready or who are unable to access these opportunities because of their personal circumstances. The figures quoted below include young people in both of these categories.

### Summary

At the end of December 2015 there were 511 young people aged 16-18 not in education, employment or training in Gloucestershire and this figure translates into an adjusted (\*) 16-18 NEET population of 3.26%. The total number of NEET young people decreased by 37 in December 2015 compared to November 2015. Four districts saw a decrease in their figures, one district had a decrease and one district's figure stayed the same.

### Total NEET Group by District Area

#### December 2015 NEET data

	Cheltenham	Cotswold	Forest	Gloucester	Stroud	Tewkesbury	Total
<b>Total NEET</b>	89	47	73	175	66	61	511
<b>Cohort</b>	2853	2853	2390	4093	3436	2365	17507
<b>% NEET</b>	3.12	1.65	3.05	4.28	1.92	2.58	3.26*

If you would like to receive any further information on Gloucestershire's NEET strategy then please contact [Ruth.Critchlow@Prospects.co.uk](mailto:Ruth.Critchlow@Prospects.co.uk) or telephone 01452 426900.

(\*) Adjustment includes a proportion of young people aged 16-18 whose outcomes are not-known to Gloucestershire Youth Support Team.