



Advance Notice: Daytime Road and Lane Closures

Dear Resident / Business Owner,

We wish to inform you of the following temporary road and traffic changes:

St Johns Lane

- Closed to traffic: 26th – 28th May. The road will be closed from 26th from 8am and will re-open at 5pm on 28th May.
- The footpath access will remain open for pedestrians.
- Access to emergency vehicles will be maintained.

Northgate Street and Worcester Street junction

- 28th May – 2nd June.
- One lane will be closed and a three-way lights traffic control system will be in operation. The three-way signals will remain on overnight for the duration of these works.
- Vehicle and pedestrian access will remain open on Northgate Street and Worcester Street during the works, but the bus stops on Worcester Street (Estate Agents) will be temporarily suspended from 28th May to 2nd June.

St Aldate Street

- Closed to traffic: 2nd – 4th June. The road will be closed from 2nd from 8am and will re-open at 5pm on 4th June.
- There will be a diversion in place for Gloucestershire University to access their car park.
- Access to emergency vehicles will be maintained.

Why are these works happening?

We will be cleaning and applying a coloured coating to sections of the footway, as well as the crossing points where the footway meets the road. These works have approved by Gloucestershire County Council.

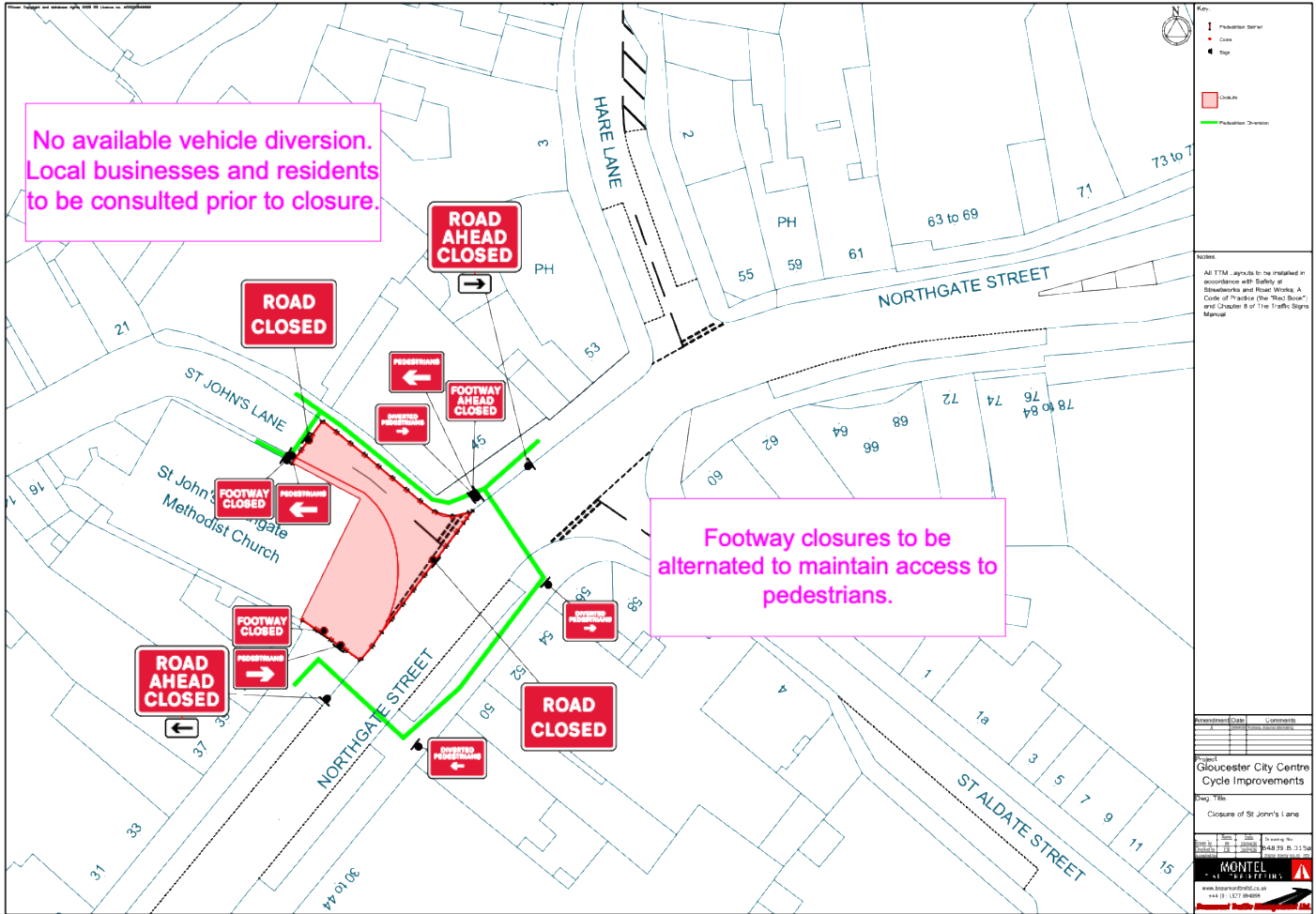
We apologise for any inconvenience and appreciate your patience while we complete these improvements.

Contact us:

- Montel: blackdogway@montel-group.com

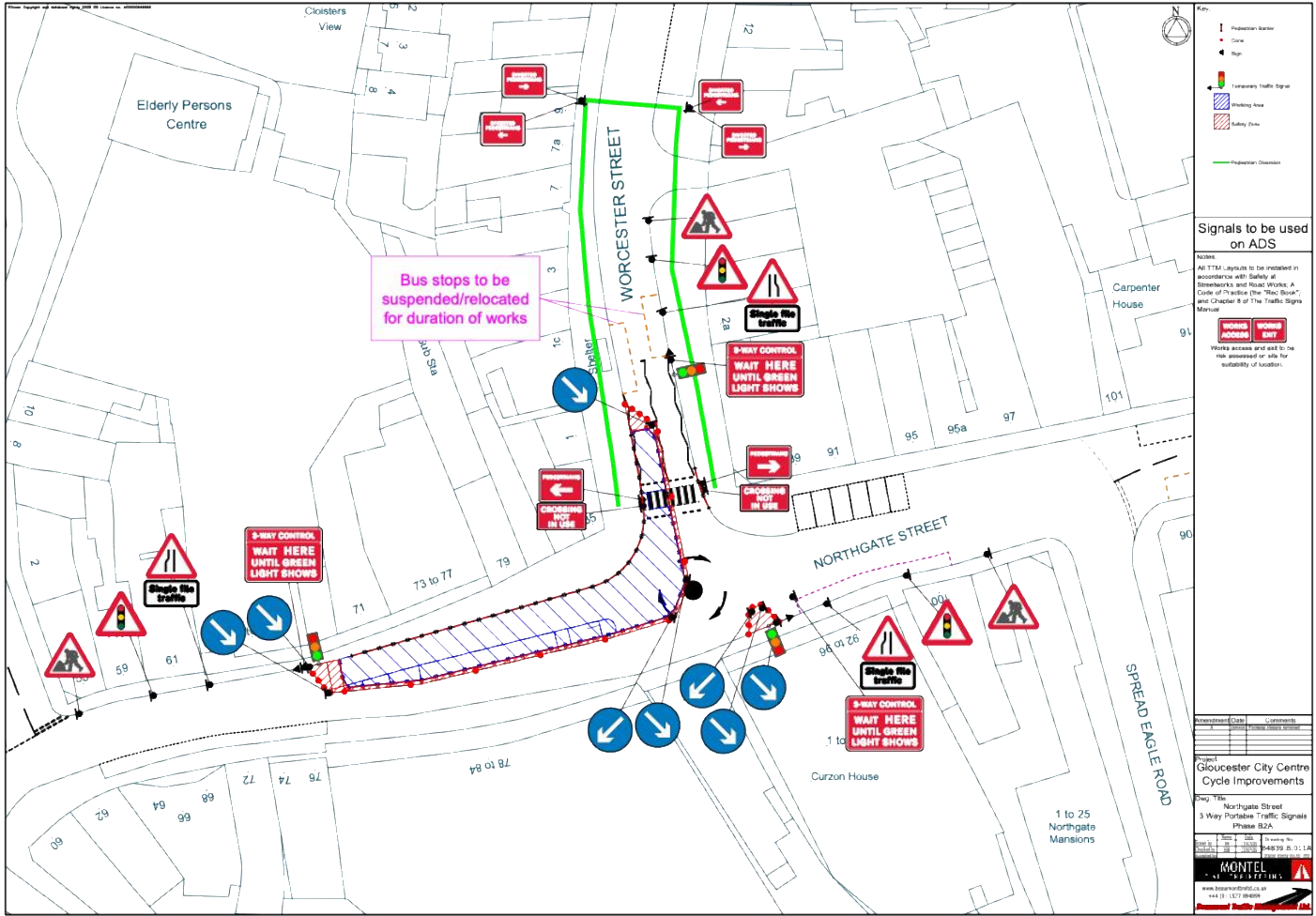
If you have any specific queries, concerns or would like to be added to the mailing list:
Please contact: blackdogway@montel-group.com





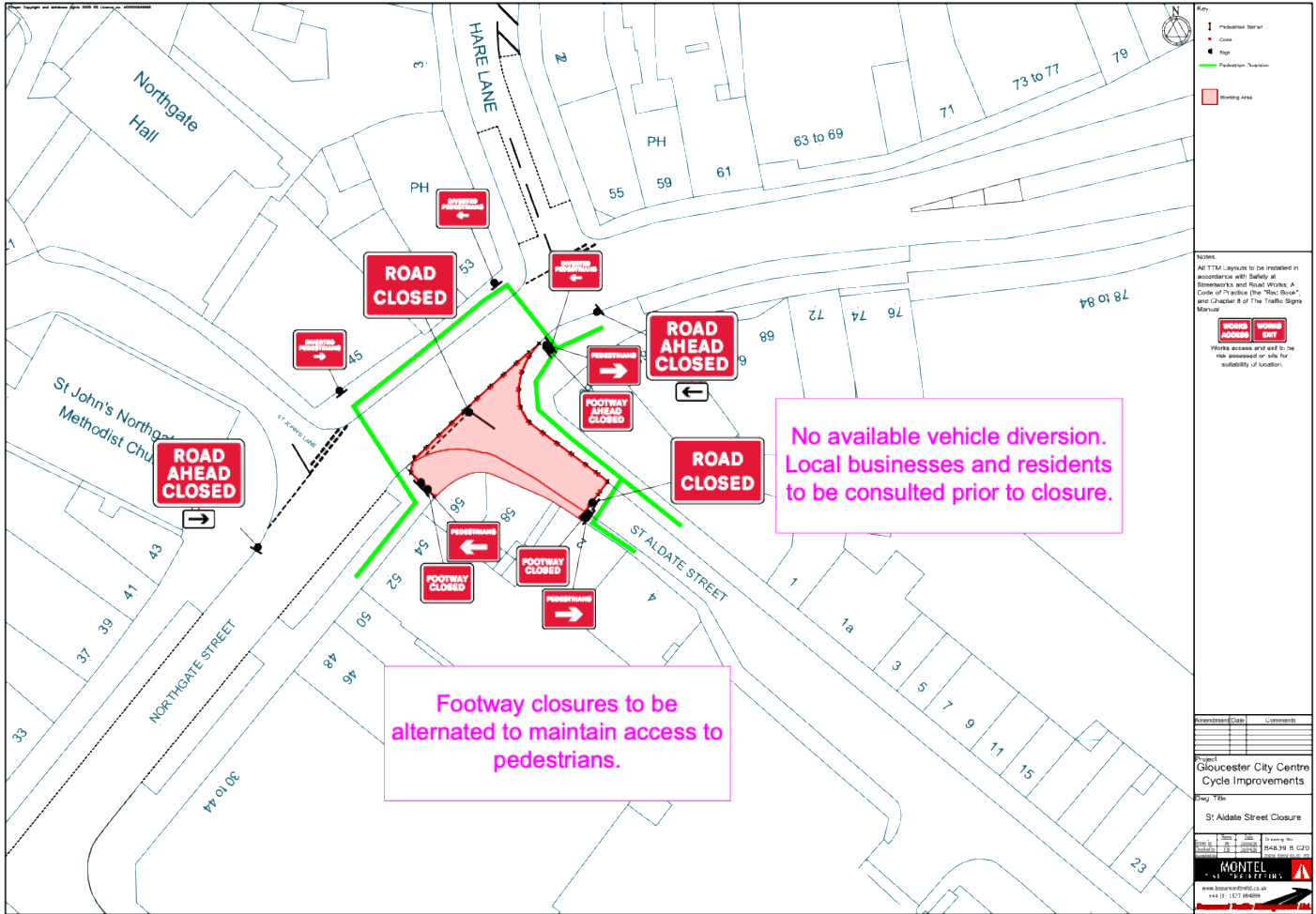
St Johns Road Closure Map

If you have any specific queries, concerns or would like to be added to the mailing list:
Please contact: blackdogway@montel-group.com



Northgate Street and Worcester Street Lane closure and bus stop suspensions

If you have any specific queries, concerns or would like to be added to the mailing list:
Please contact: blackdogway@montel-group.com



St Aldate Street Road closure

If you have any specific queries, concerns or would like to be added to the mailing list:
Please contact: blackdogway@montel-group.com



montelcivilengineering.co.uk



01905 425 468



facebook.com/montelcivilengineering



linkedin.com/company/montel-civil-engineering