



## **Waste Core Strategy**

### **Proposals Map Update Statement**

**September 2011**

# **Contents**

**Section 1: Introduction**

**Section 2: Statutory requirements for Proposals Maps**

**Section 3: The Gloucestershire Minerals and Waste Proposals Map**

**Appendix A: Waste Core Strategy – Proposed Submission Proposals Map**

**Appendix B: Waste Core Strategy – Policy WCS4 changes to the Proposal Map**

**Appendix C: Alternative Boundary for Site 3: Javelin Park**

**Appendix D: Constraint Layers available on the Web-based interactive Proposals Map**

## 1. Introduction

1. This paper has been produced in support of the Waste Core Strategy. The purpose of the paper is to outline the statutory requirements for a Proposals Map Development Plan Document (DPD) and inform of the changes to the Gloucestershire's Minerals and Waste Proposals Map that would arise, should the Submission Waste Core Strategy be adopted

## 2. Statutory Requirements for Proposals Maps

2. The *Town and Country Planning (Local Development) (England) Regulations 2004 (as amended)* specify what a proposals map should contain and when it should be revised. Further policy related to proposals map is given within Section 8 of *Planning Policy Statement 12*.
3. The adopted proposals map must be comprised of or contain a map of the local planning authority's area which must:
  - be reproduced from, or based on, an Ordnance Survey map;
  - show National Grid lines and reference numbers; and
  - include an explanation of any symbol or notation which it uses.
4. The adopted proposals map should:
  - identify areas of protection, such as nationally protected landscape and internationally, nationally and locally-designated areas and sites, and Green Belt land;
  - show areas at risk from flooding; and
  - allocate sites for particular land use and development proposals included in any adopted development plan document and set out the areas to which specific policies apply.
5. Where two-tier authorities exist, such as in Gloucestershire, District Councils should include on their adopted proposals map, minerals and waste matters including safeguarding areas, and any minerals and waste allocations which are adopted in a development plan document by the county council.
6. If the adoption or approval of any part of a development plan document (DPD) would result in changes to the adopted proposals map, a submission proposals map should be submitted to the Secretary of State along with the submission DPD and other documents (as outlined in Regulation 30 of the *Town and Country Planning (Local Development) (England) (Amendment) Regulations 2008*). This document should reflect the proposed changes.
7. Separate inset maps may be used to show policies for part of the authority's area, such as the policies for area action plans, which must all be shown on the adopted proposals map. Where inset maps are used, the geographical area they will cover will be



identified on the main adopted proposals map. The boundaries of each inset map must be shown precisely on the adopted proposals map but the policies shown on the inset must not appear on the main adopted proposals map.

8. When the adopted proposals map is first adopted it must illustrate geographically the application of:
  - the policies in any DPD adopted at the same time, and
  - where appropriate, old policies which apply at that time.

### 3. The Gloucestershire Minerals and Waste Proposals Map

9. A meeting was held at Shire Hall on 6th July 2007 between officers from the Government Office for the South West (GOSW) and officers from Gloucestershire County Council (GCC).
10. The content and format of the proposals map at Preferred Options stage was discussed during the meeting and the advice from GOSW was that GCC already had saved proposals maps within the local plans and to use those, but indicate how it is intended to be changed. GOSW concluded that it was not necessary to produce a proposals map at Preferred Options stage. This update statement indicates how the Proposals Map will change on adoption of the Waste Core Strategy (WCS).
11. On the 18th September 2007 the Secretary of State issued a direction in relation to the Minerals Local Plan (MLP), saving policies *A3 - Working in Preferred Areas*; *A4 - Working Outside of Preferred Areas*; *A5 - Crushed Rock Preferred Areas (Forest of Dean)*; *A6 - Crushed Rock Preferred Areas (Cotswolds)*; and *A7 – Sand & Gravel Preferred Areas*. In addition to saving the policies relating to preferred areas, the direction saved the whole of Chapter 10 of the *Minerals Local Plan (MLP)* containing the Inset Maps and Proposals.
12. It should be noted that the Minerals Consultation Area (MCA) map, that formed Appendix I of the MLP, was not officially saved by the Secretary of State's direction. However, the MCA was originally delineated in 1981 and provisions for this is set out under paragraph 7(3)(c) of Schedule 1 of the Town and Country Planning Act. As such the MCA still exists until such a time when it will be replaced.
13. On 5th October 2007, the Secretary of State issued another direction in relation to the adopted Gloucestershire Waste Local Plan (WLP). This did not save any of the policies relating to sites or the sites themselves within the WLP despite GCC requesting to save them.
14. In the case of any unsaved policies GCC sought legal opinion and was advised that any unsaved policies from the WLP may be a material consideration (where appropriate) in the determination of planning applications in the absence of new style plans. The weight to be given to the material consideration, in the determination of a proposal, will

be a matter for the decision-maker.

15. In instances where there is a relationship with unsaved WLP site related policies, 4, 5, 6 and 7, these are likely to be of significant material weight in the absence of any revised Waste Site Allocations DPD. The case officer and the Planning Committee as decision-maker will need to come to a view as to what 'weight' to attach to such instances alongside any other material considerations when determining any planning applications. As such Chapter Four of the WLP, which refers to Facilities and Preferred sites, has still been considered as part of the Proposals Map.
16. The WCS (as detailed in Regulation 27 of *Town and Country Planning (Local Development) (England) (Amendment) Regulations 2008*) was published in December 2010 and included a Proposed Submission Proposals Map, which when adopted would have the effect of removing the former WLP allocations from the existing adopted Proposals Map and delineating the four new sites allocated within the WCS. Other policies within the WCS were not possible to delineate.
17. Appendix A to this paper illustrates the Submission changes to the Proposals Map, as outlined in paragraph 4 of this paper above. This comprises a map of the county depicting the main area of constraints along with new allocations shown as insets. Existing unchanged aspects of the adopted Proposals Map, such as the adopted MLP allocations, are not illustrated in Appendix A. The substantive change to the Proposals Map which would result from adoption of the WCS is the addition of four inset maps identifying strategic sites for waste management. These relate to Policy WCS4 and replace all former WLP allocations. The four insets are attached as Appendix B to this statement. They also appear as Appendix 5 of the WCS.
18. As a result of the Focused Changes to Publication consultation, the owners of the northern part of Site 3: Javelin Park objected to the WCS on the basis that they no longer wish to have their part of the Javelin Park site allocated for waste use in the plan under Core Policy WCS4. One of the key criteria that the Council has used in selecting the four strategic sites is deliverability and because the representation from the landowner raises significant doubts over the deliverability of their part of the site, it is considered appropriate to 'de-allocate' their land from the WCS.
19. This necessitates a number of amendments being made throughout the WCS changing the boundary of Inset Map 3. These amendments are therefore being put forward

through the examination process by the Council as Focused Change 44 (FC44). However, as the representation was received so late in the development plan process, it has not been subject to stakeholder consultation and it is not considered to materially affect the plan or to prejudice any representations made previously in relation to Javelin Park or other aspects of the WCS. The proposed alternative boundary to Site 3: Javelin Park is shown in Appendix C.

20. The volume of information that is required on proposals maps in relation to constraints is substantial and difficult to present in one hard copy format. Therefore, the actual Gloucestershire Minerals and Waste Proposals Map is available in an interactive format at <http://www.gloucestershire.gov.uk/index.cfm?articleid=10580>). This includes all international, national and local constraints.
21. Users of the interactive proposals map are able to view the constraints as layers able to be switched on and off as required. This enables the user to focus in on just the constraints or areas they are particularly interested in rather than being faced with a mass of symbols and graphics on a printed map. A full list of the constraints available online are listed in Appendix D.
22. The interactive map highlights which aspects are to be changed, should the WCS be adopted and users will also be able to view the unchanged aspects of the map such as the Minerals Consultation Area and the Preferred Areas outlined in the MLP.



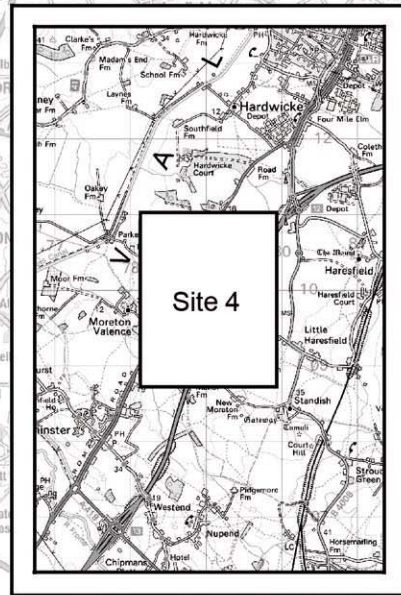
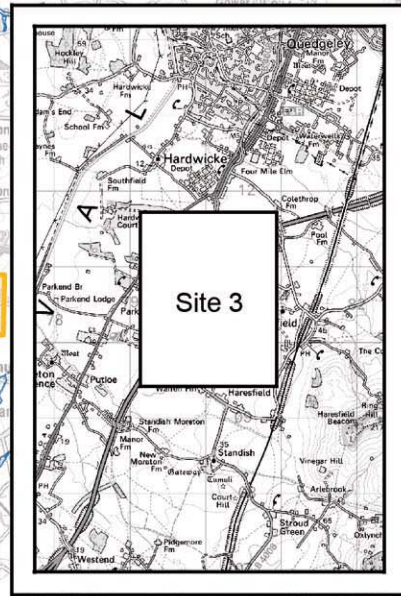
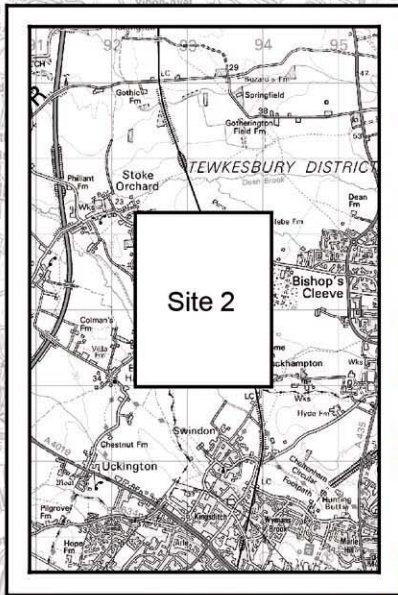
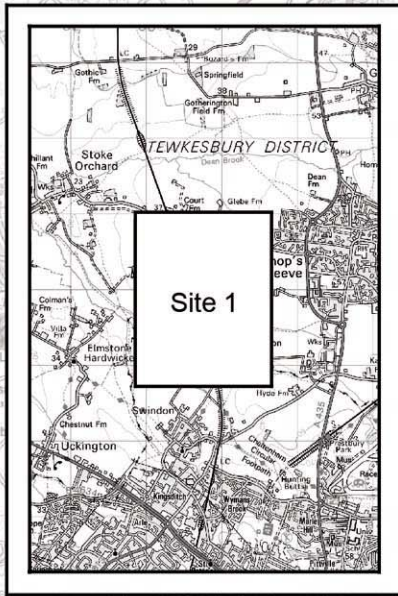
# **Appendix A:**

## **Waste Core Strategy – Submission Proposals Map**

**September 2011**



# Waste Core Strategy Submission Changes To Proposals Map

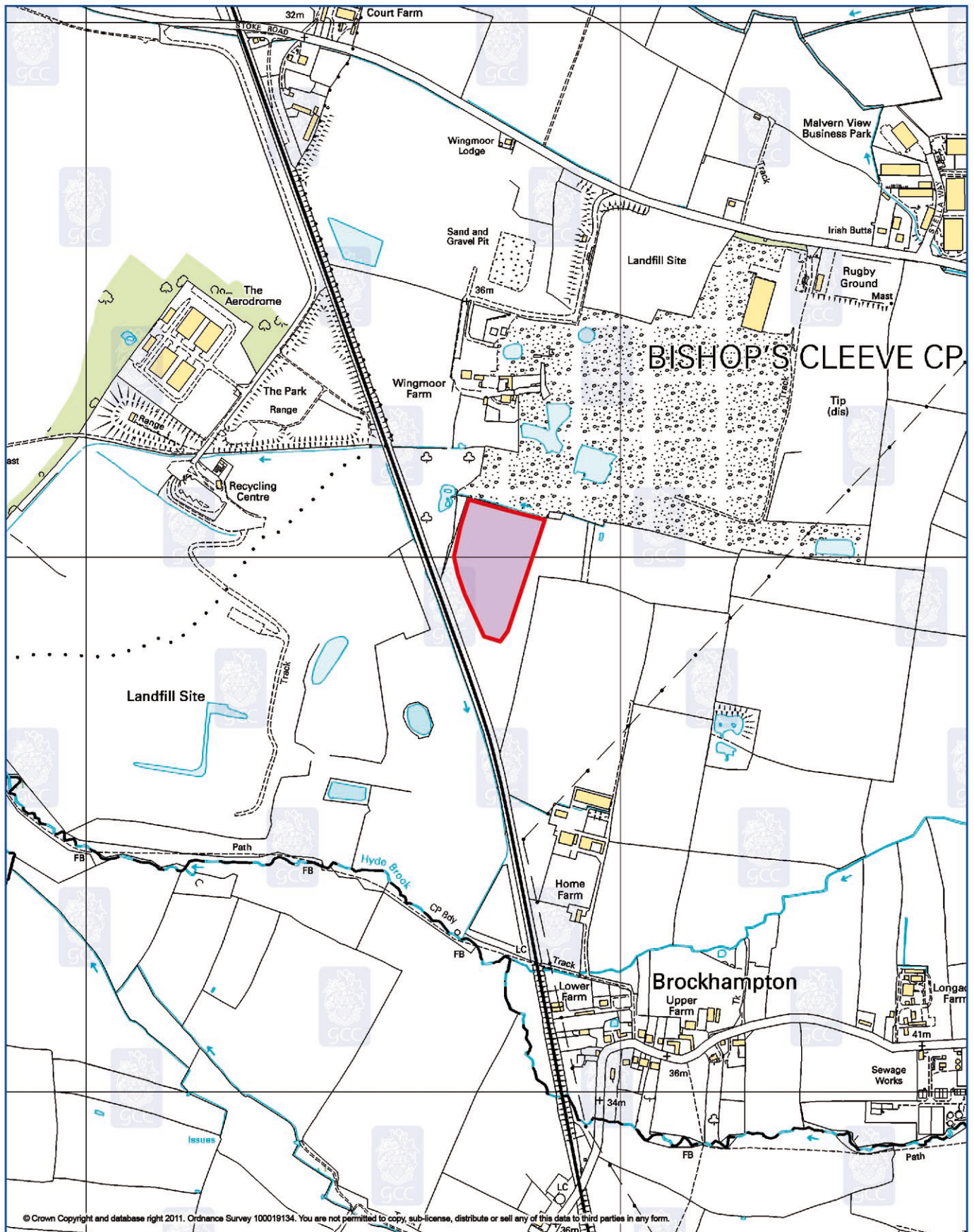




## **Appendix B:**

### **Waste Core Strategy**

### **Policy WCS4 changes to the Proposal Map**



**Site Boundary**

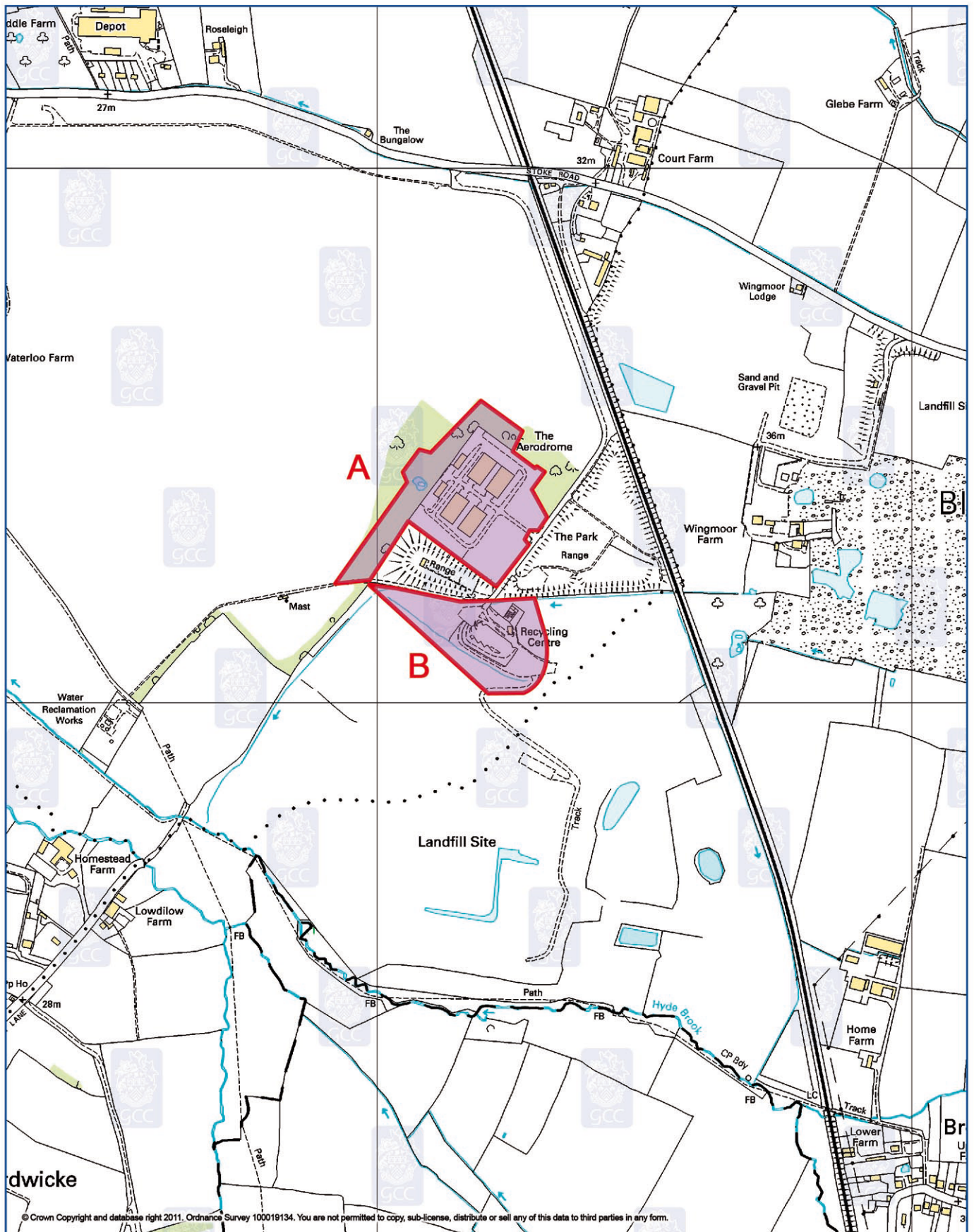
**Site 1 - Wingmoor East**

A full range of Environmental Constraints is available on the Online Interactive Proposals Map

**Waste Core Strategy Policy WCS4**

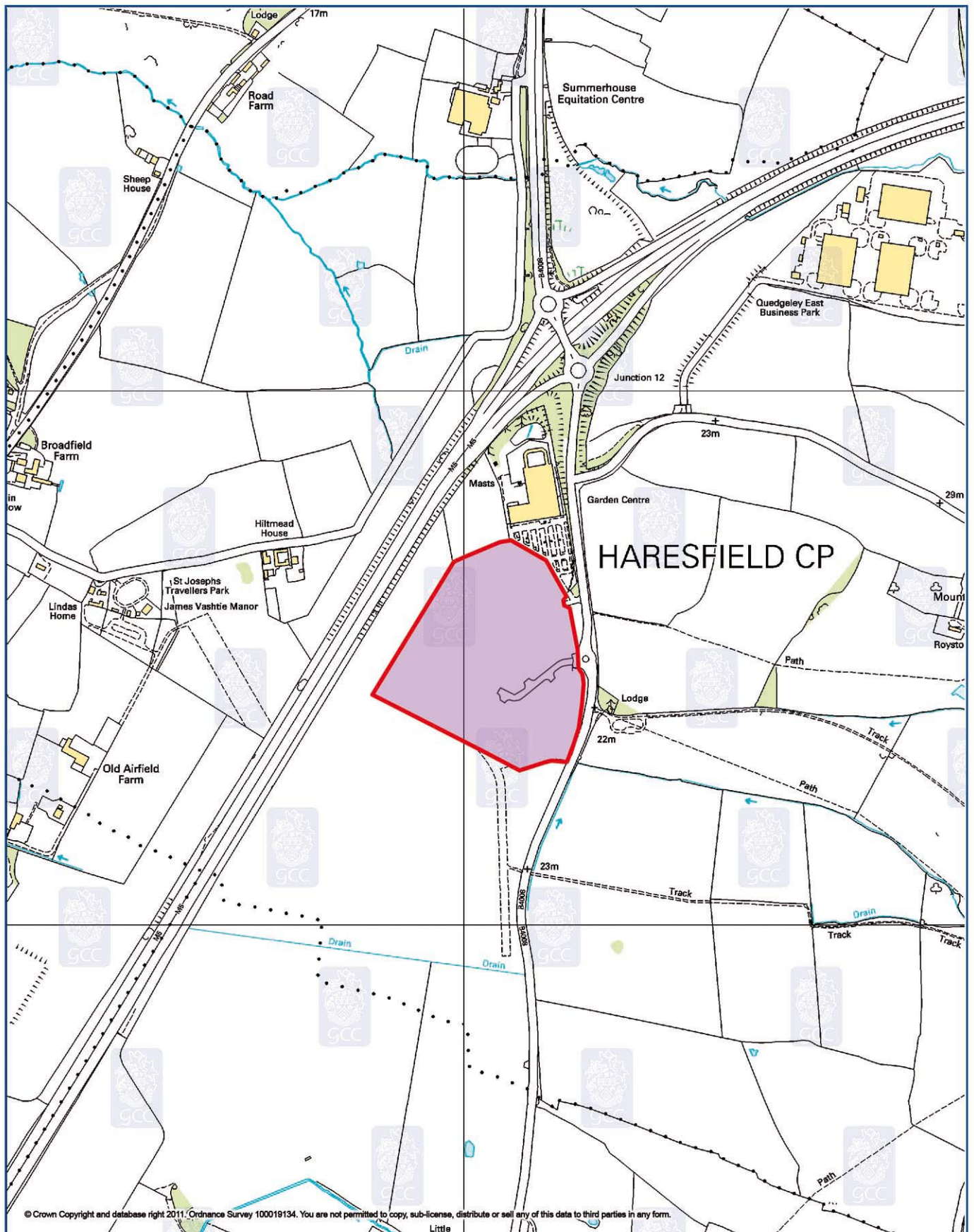






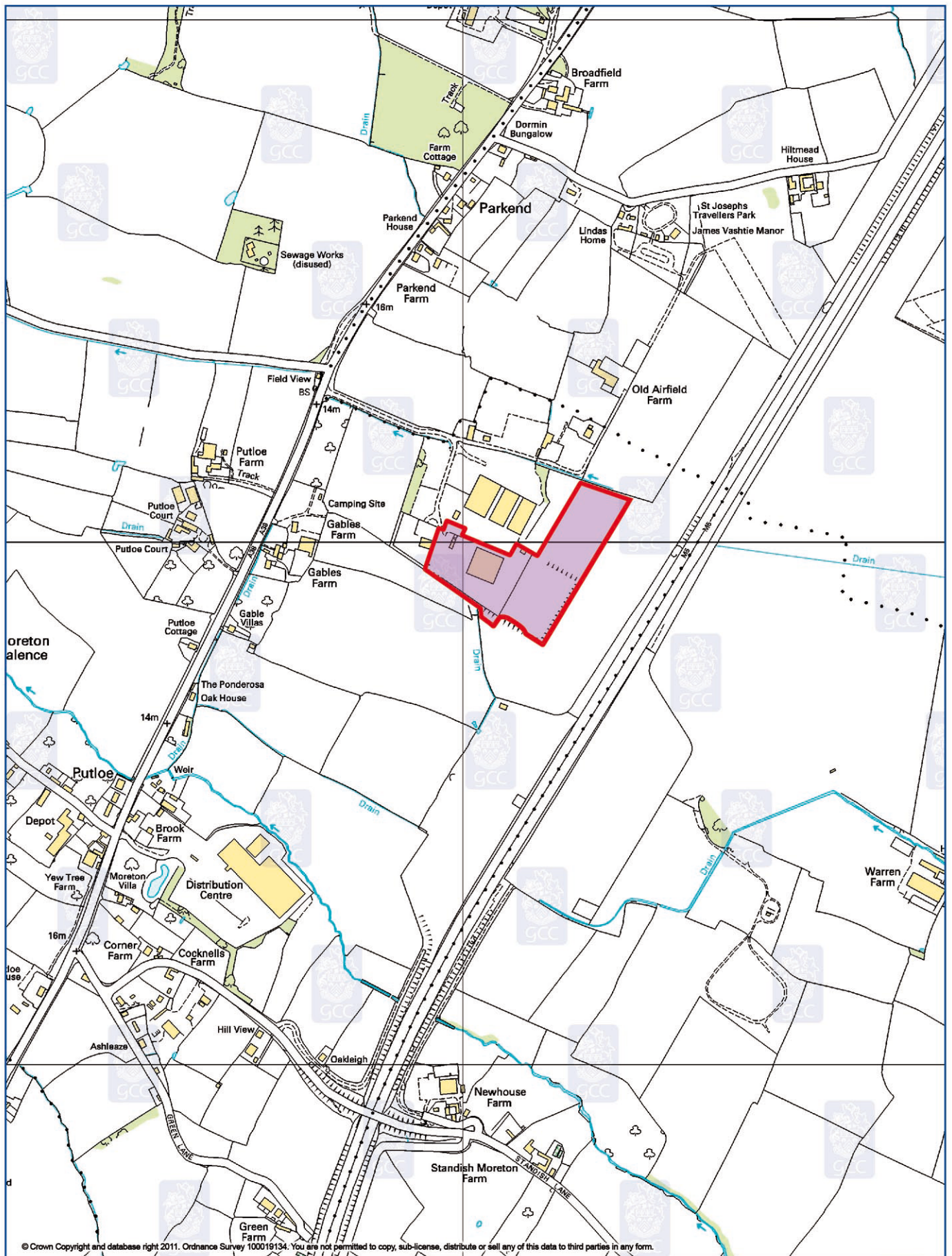
 <b>Site Boundary</b>	<b>Site 2 - Wingmoor Farm West (Sites A &amp; B)</b>	
A full range of Environmental Constraints is available on the Online Interactive Proposals Map	<b>Waste Core Strategy Policy WCS4</b>	
 500 yards 500 metres	 <b>Gloucestershire</b> COUNTY COUNCIL	 MW014_02





 <b>Site Boundary</b>	<b>Site 3 - Javelin Park</b>	
A full range of Environmental Constraints is available on the Online Interactive Proposals Map	<b>Waste Core Strategy Policy WCS4</b>	
		 MW014_05





**Site Boundary**

**Site 4 - Moreton Valence**



**Gloucestershire**  
COUNTY COUNCIL

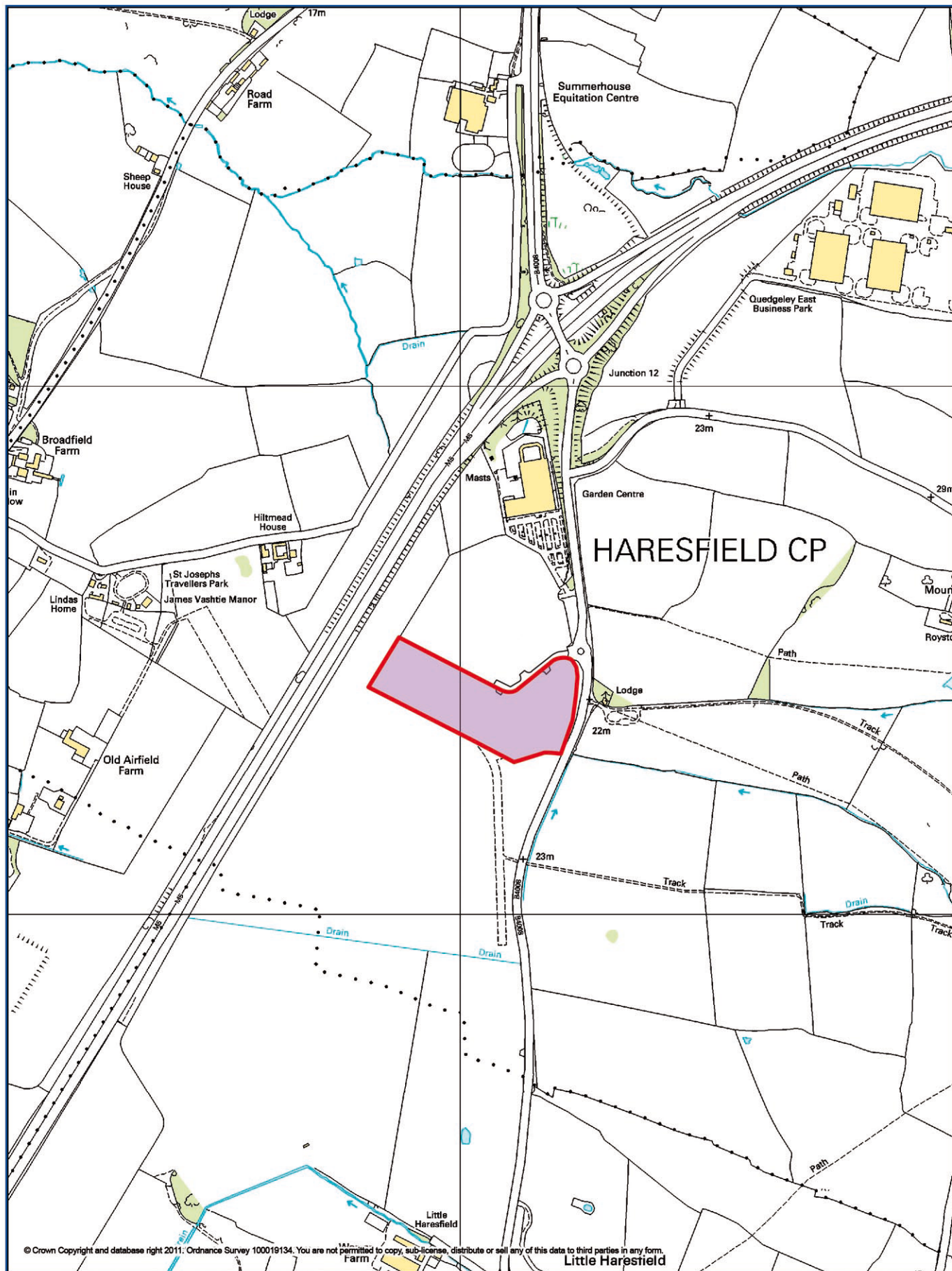


MW014\_04

## **Appendix C:**

### **Alternative boundary for Site 3: Javelin Park**





**Site Boundary**

**Javelin Park**



**Gloucestershire**  
COUNTY COUNCIL



MW016\_01

## **Appendix D:**

# **Constraint Layers available on the Web-based interactive Proposals Map**

The web-based interactive proposals map contains the following list of layers:

### **Allocations**

- Strategic Waste Site Allocations
- Former Waste Local Plan Allocations (to be removed upon adoption of the WCS)
- Minerals Consultation Area
- Minerals Local Plan Allocations

### **Constraints\***

- Areas of Outstanding Natural Beauty
- Green Belt
- Flood Plain (Strategic Flood Risk Area (SFRA) Zones 2, 3a and 3b)
- Ramsar Sites (International Wetlands)
- Special Protection Areas
- Special Areas of Conservation
- Sites of Special Scientific Interest
- National Nature Reserves
- Key Wildlife Sites
- Local Nature Reserves
- Ancient Woodland (Ancient & Semi-Natural and Ancient Replanted)
- Public Rights of Way
- Scheduled Ancient Monuments
- Registered Parks & Gardens
- Registered Battlefields
- Coal Referral Areas
- Coal Resource Area

### **Other Layers**

- Boundaries (Ward, Parish, District & County)

\*Please note at the present time Regionally Important Geographic Sites (RIGS) are not available in map format. Further information on these sites can be obtained from the Gloucestershire Geology Trust

<http://www.glosgeotrust.org.uk/>

 **recycle** for Gloucestershire



**Gloucestershire**  
COUNTY COUNCIL

Minerals & Waste Planning Policy  
Environment Directorate  
Gloucestershire County Council  
Shire Hall  
Gloucester  
GL1 2TH

[www.gloucestershire.gov.uk](http://www.gloucestershire.gov.uk)