

Unemployment Bulletin

Issue 41 December 2011

Contents

Part 1: Summary

A summary of unemployment data at district, County, regional and national level

1

Part 2: County

Unemployment figures for the County compared to the South West and the rest of the UK

3

Part 3: Districts

A comparative break down of unemployment figures by district

4

Part 4: Wards

Further breakdown of unemployment figures by ward:

Cheltenham

6

Cotswolds

8

Forest of Dean

10

Gloucester

12

Stroud

14

Tewkesbury

16

Part 5: Map

Distribution of claimant rate across Gloucestershire

18

Part 6: Young People

Data about Young People Not in Education, Employment or Training (NEET)

20

INTRODUCTION

The Unemployment Bulletin provides a monthly update on unemployment data for Gloucestershire, the South West region and the United Kingdom. It is produced by the Economic section of the County Council Chief Executive's Support Unit Research Team. The data is sourced from the Office for National Statistics via Nomis (www.nomis.co.uk).

The claimant count measures the number of people claiming unemployment-related benefit (currently Job Seeker's allowance). The claimant rate is the number of claimants as a proportion of the working age population.

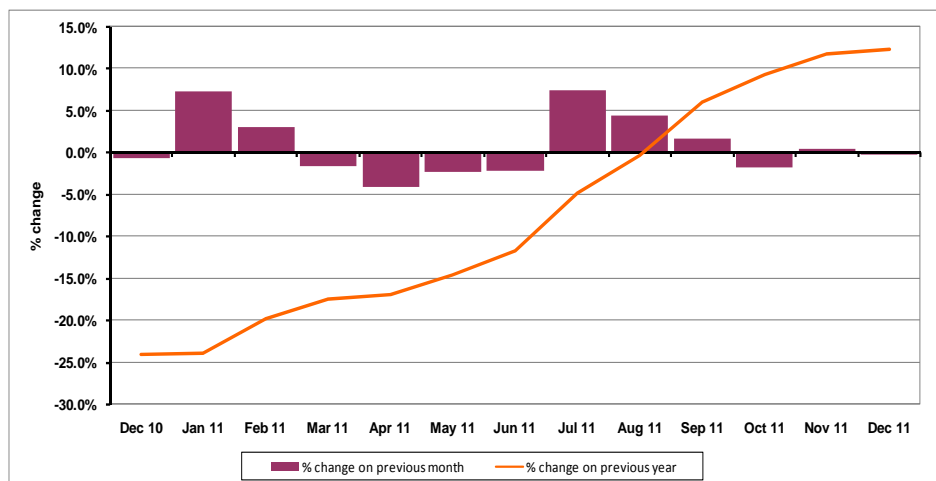
PART 1: SUMMARY

The claimant rate in Gloucestershire was 2.6% in December 2011. This was the same as the November 2011 figure. The UK and South West rate also remained the same as last month at 3.9% and 2.7% respectively. Gloucestershire's rate was 0.1% lower than the South West average of 2.7%, and 1.3% lower than the UK average of 3.9%.

The claimant count in Gloucestershire in December 2011 decreased by 26 people. The amount of people claiming in December 2011 was -0.3% lower than the number in November 2011. This compares to a 1.6% increase in the South West and a 0.6% increase for the UK.

The year on year claimant count in Gloucestershire has increased. The count was 12.3% higher in December 2011 than at the same point in the previous year as shown in the graph below.

Gloucestershire claimants - Month on Month and Year on Year change: December 2010 to December 2011



Source: ONS Crown Copyright Reserved

Produced by:

The Research Team (Economics)
Chief Executive Support Unit
Gloucestershire County Council
January 2012

DISTRICTS AT A GLANCE

At a glance unemployment information grouped by district. Includes:

Claim count: Total number of people claiming Job Seekers Allowance in December 2011

Compared to last month: How much larger/smaller November's claim count is compared to November, expressed as a %

Claimant rate: The % of working population claiming Job Seekers Allowance in December 2011

Highest claiming ward: The ward with the highest claim count in that district and the rate

CHELTENHAM BOROUGH

Claim count:	2,271
Compared to last month:	+1.3%
Claimant rate:	3.0%
Highest claiming ward	Hesters Way (6.3%)

GLOUCESTER CITY

Claim count:	2,923
Compared to last month:	-1.7%
Claimant rate:	3.8%
Highest claiming ward	Westgate (7.9%)

COTSWOLD DISTRICT

Claim count:	728
Compared to last month:	-2.7%
Claimant rate:	1.4%
Highest claiming ward	Cirencester Watermoor (3.6%)

STROUD DISTRICT

Claim count:	1,359
Compared to last month:	+0.2%
Claimant rate:	2.0%
Highest claiming ward	Slade (5.7%)

FOREST OF DEAN

Claim count:	1,342
Compared to last month:	+0.3%
Claimant rate:	2.6%
Highest claiming ward	Lydney East (4.4%)

TEWKESBURY BOROUGH

Claim count:	1,094
Compared to last month:	+0.7%
Claimant rate:	2.2%
Highest claiming ward	Tewkesbury Prior's Park (5.9%)

YOUNG PEOPLE NOT IN EDUCATION, EMPLOYMENT OR TRAINING (NEET)

As at the end of December 2011 there were 783 young people aged 16-18 not in education, employment or training in Gloucestershire and this figure translates into an adjusted (*) 16-18 NEET population of 5.1%.

PART 2: UK, SW AND GLOUCESTERSHIRE INDICATORS

The unemployment situation in Gloucestershire compared to the South West and the UK.

Claimant Rate

Figure 1: Claimant Rate for Gloucestershire, the South West and UK over the past year

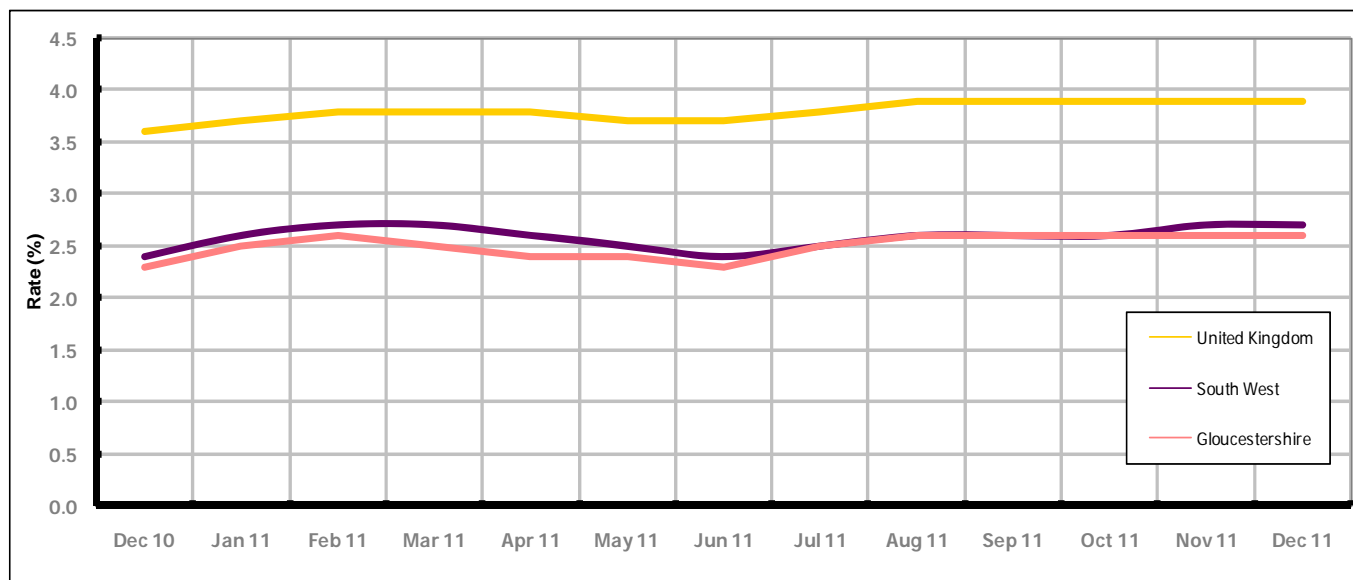


Figure 1 shows the claimant rate for Gloucestershire at 2.6% in December 2011. Between July and October 2011, the rate remained the same as the South West average, in November 2011 it fell below the South West rate. It has been lower by approximately 1.3% against the UK average during the same period. The December 2011 rate remained the same as November 2011.

Claimant Count

Table 1: Analysis of UK, South West and Gloucestershire Claimant Counts

Area	Claimant Count in December 2011	% change on November 2011	Average % change over the last six months	Consecutive months increasing
UK	1,568,849	+0.6%	+0.3%	0
South West	89,343	+1.6%	+1.3%	0
Gloucestershire	9,717	-0.3%	+0.7%	0

Table 1 shows that in December 2011, the number of claimants in Gloucestershire was -0.3% lower than the number in November 2011.

The average change in claimants in Gloucestershire for the six months to December 2011 was +0.7%. This is 0.4% higher than the UK average and 0.6% lower than the South West average.

PART 3: LOCAL AUTHORITY DISTRICT ANALYSIS

Claimant Rate and Claimant Count

Figure 2: Claimant Rate (%) across Gloucestershire - December 2011

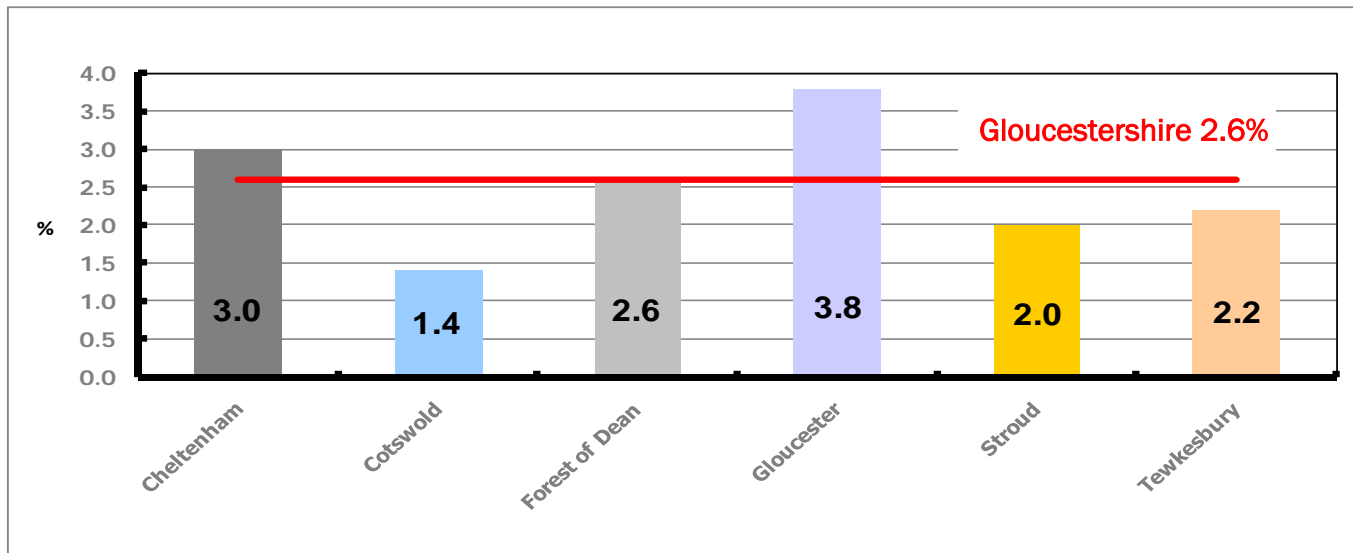


Figure 2 shows the claimant rate for December 2011 in Gloucestershire. Between November 2011 and December 2011 Cotswold and Gloucester experienced a decrease, while Tewkesbury increased and the remaining districts stayed the same.

Figure 3: Total claimants over the past year across Gloucestershire Districts

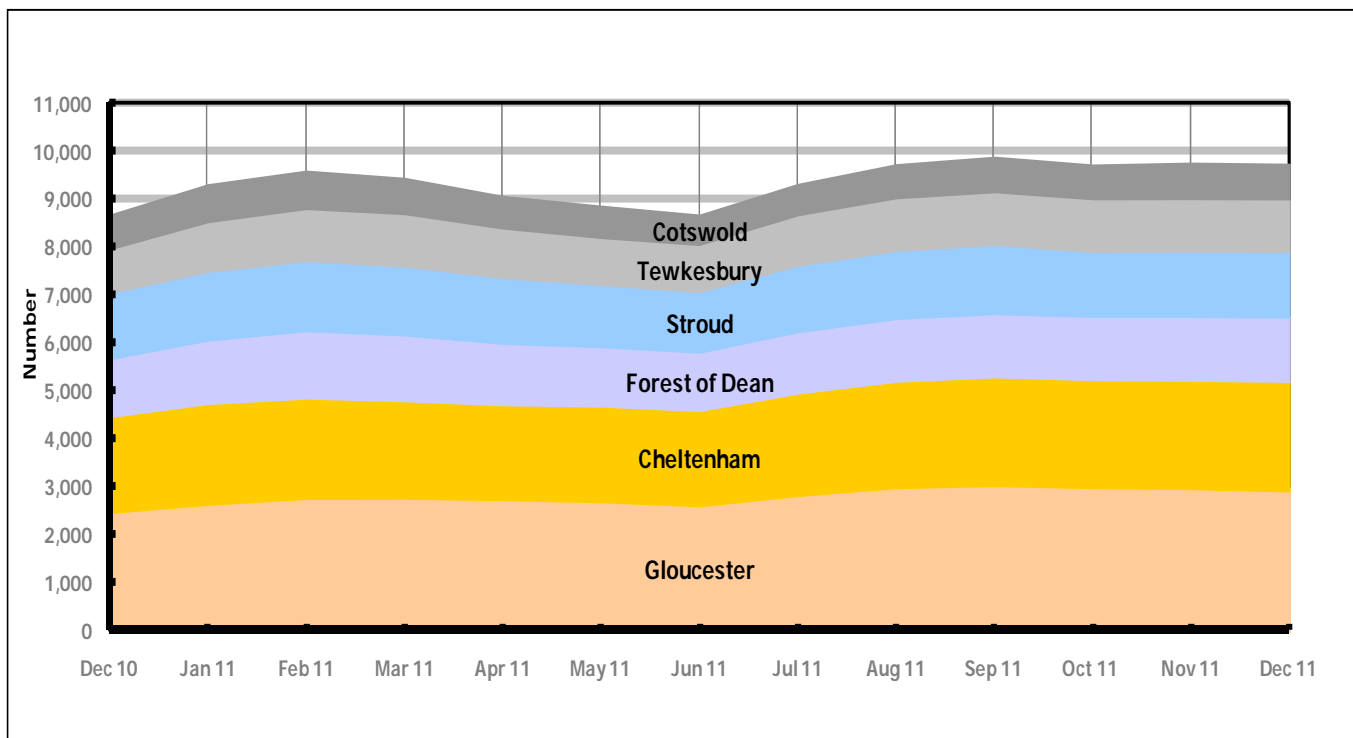


Figure 3 shows the overall claimant count by district over the past year. The number of claimants generally declined between December 2010 and June 2011. Since July 2011 the number of claimants have increased, with the exception of October and December when there was a decline.

Table 2: Analysis of Gloucestershire and District Claimant Counts

Total	Dec 11 Number	Dec 11 Rate	Nov 11 Number	Nov 11 Rate	Monthly change	% monthly change	Monthly change of rate
Gloucestershire	9,717	2.6	9,743	2.6	-26	-0.3%	0.0
Cheltenham	2,271	3.0	2,242	3.0	29	1.3%	0.0
Cotswold	728	1.4	748	1.5	-20	-2.7%	-0.1
Forest of Dean	1,342	2.6	1,338	2.6	4	0.3%	0.0
Gloucester	2,923	3.8	2,973	3.9	-50	-1.7%	-0.1
Stroud	1,359	2.0	1,356	2.0	3	0.2%	0.0
Tewkesbury	1,094	2.2	1,086	2.1	8	0.7%	0.1

Table 2 shows the change in the claimant count in December 2011 compared to November 2011. Cotswold and Gloucester district experienced a decrease in the number of claimants, while the remaining districts saw an increase.

Table 3: Analysis of Male Gloucestershire and District Claimant Counts

Male	Dec 11 Number	Dec 11 Rate	Nov 11 Number	Nov 11 Rate	Monthly change	% monthly change	Monthly change of rate
Gloucestershire	6,547	3.5	6,480	3.5	67	1.0%	0.0
Cheltenham	1,561	4.1	1,521	4.0	40	2.6%	0.1
Cotswold	460	1.8	460	1.8	0	0.0%	0.0
Forest of Dean	908	3.5	870	3.4	38	4.4%	0.1
Gloucester	1,981	5.2	2,020	5.3	-39	-1.9%	-0.1
Stroud	907	2.6	885	2.6	22	2.5%	0.0
Tewkesbury	730	2.9	724	2.9	6	0.8%	0.0

Table 3 shows the change in the male claimant count in December 2011 compared to November 2011. Gloucester experienced a decrease in the number of male claimants, while the other districts saw an increase.

Table 4: Analysis of Female Gloucestershire and District Claimant Counts

Female	Dec 11 Number	Dec 11 Rate	Nov 11 Number	Nov 11 Rate	Monthly change	% monthly change	Monthly change of rate
Gloucestershire	3,170	1.7	3,263	1.7	-93	-2.9%	0.0
Cheltenham	710	1.9	721	1.9	-11	-1.5%	0.0
Cotswold	268	1.0	288	1.1	-20	-6.9%	-0.1
Forest of Dean	434	1.7	468	1.8	-34	-7.3%	-0.1
Gloucester	942	2.5	953	2.5	-11	-1.2%	0.0
Stroud	452	1.3	471	1.4	-19	-4.0%	-0.1
Tewkesbury	364	1.4	362	1.4	2	0.6%	0.0

Table 4 shows the change in the female claimant count in December 2011 compared to November 2011. Tewkesbury experienced a slight increase in the number of female claimants, while the other districts saw a decrease.

PART 4: LOCAL AUTHORITY DISTRICT AND WARD ANALYSIS

This section covers the six districts and a comparison of their constituent wards.

4.1 Cheltenham Borough

Claimant Rate and Claimant Count

Figure 4: Cheltenham Borough claimant rate over the last year

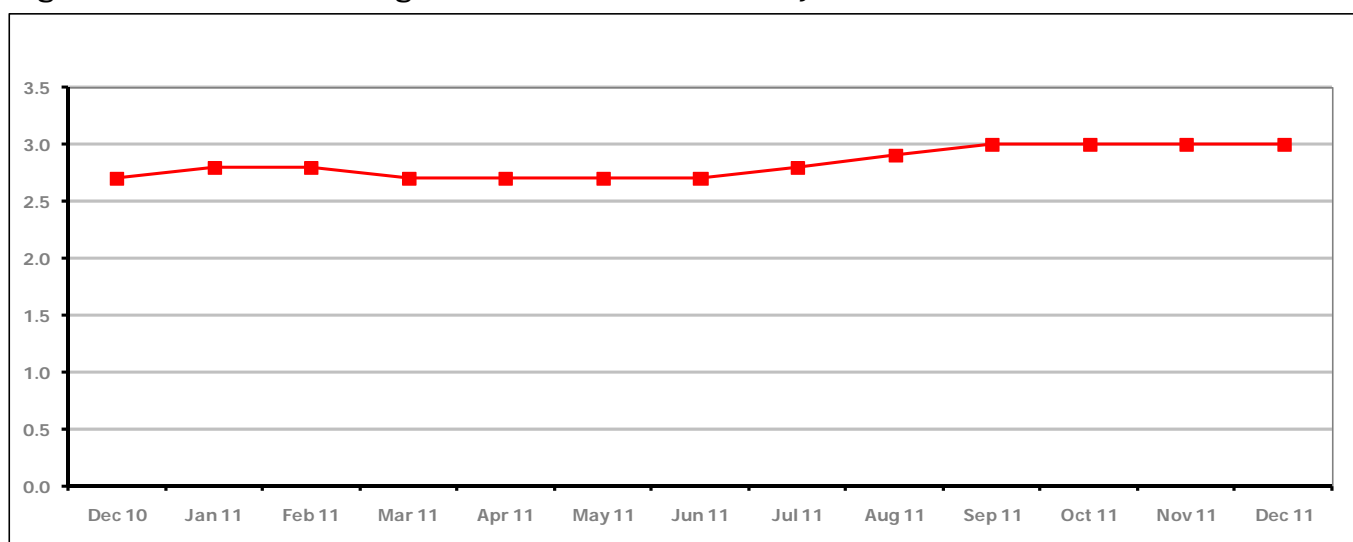


Figure 4 shows the claimant rate in Cheltenham remained the same as the last three months at 3.0%.

Figure 5: Cheltenham Borough claimants - Month on Month and Year on Year change

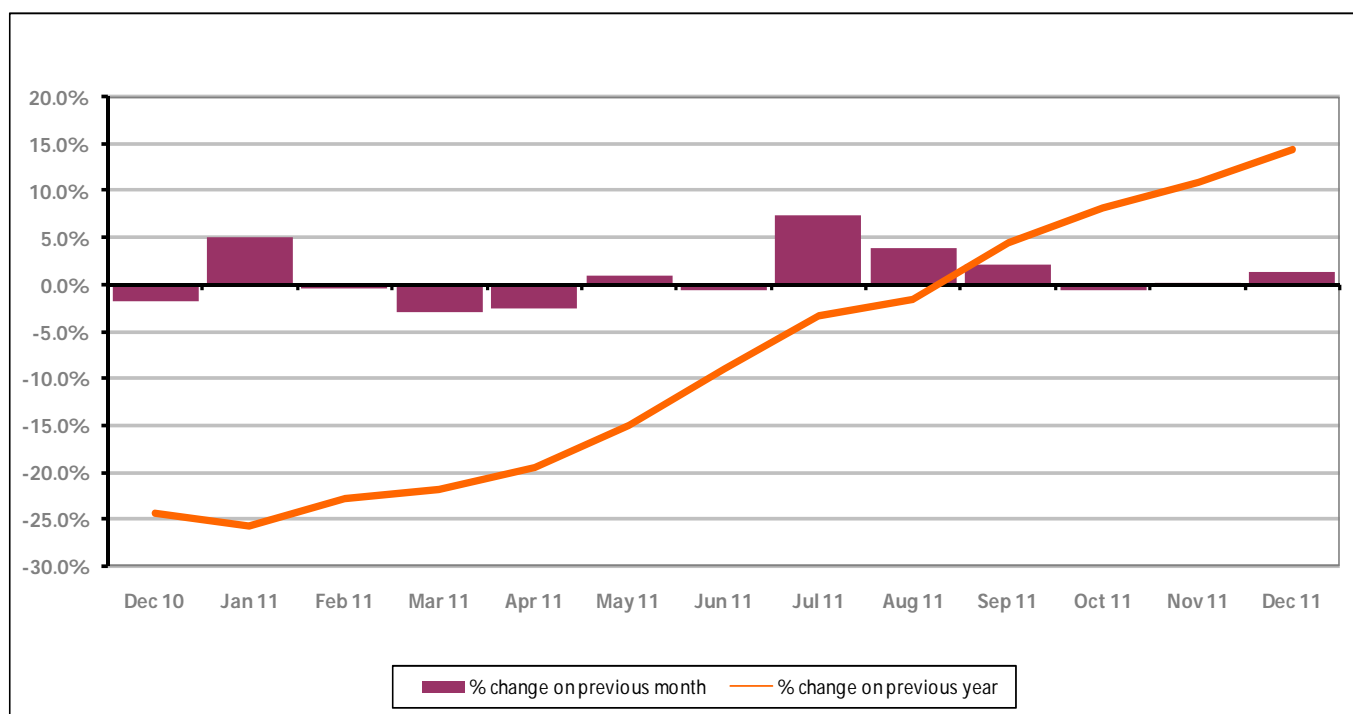


Figure 5 shows the claimant count increased by +1.3% since last month. The change on the previous year has increased in December 2011 compared to November 2011 to +14.4%.

PART 4: LOCAL AUTHORITY DISTRICT AND WARD ANALYSIS

4.1 Cheltenham Borough continued...

Figure 6: Claimant rates across Cheltenham Borough wards - December 2011

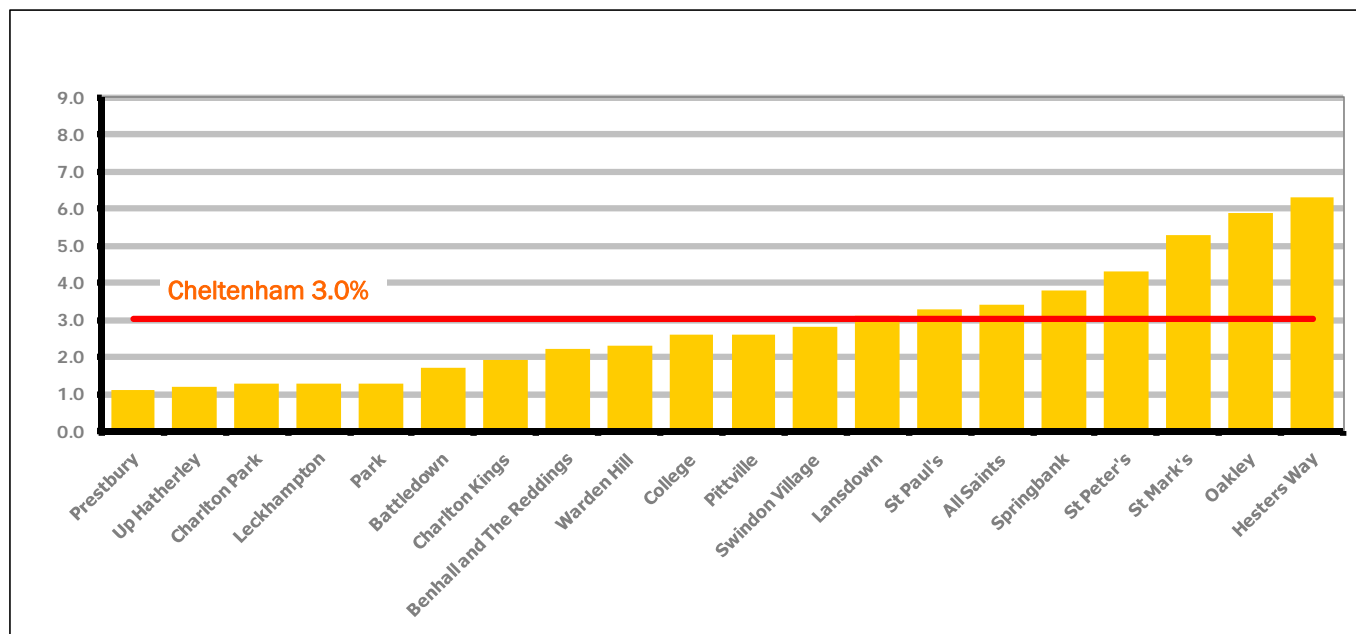
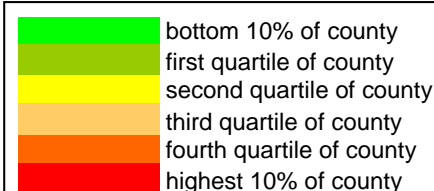


Figure 6 shows the claimant rates for Cheltenham Borough wards. The red line represents the average claimant rate across the Borough of 3.0%. Eight wards lie above the average.

Table 5: Analysis of Claimant Count at Cheltenham Borough ward level - December 2011

District	Ward	Rate	Rank*
Cheltenham	Prestbury	1.1	24
Cheltenham	Up Hatherley	1.2	30
Cheltenham	Charlton Park	1.3	34
Cheltenham	Leckhampton	1.3	34
Cheltenham	Park	1.3	34
Cheltenham	Battledown	1.7	67
Cheltenham	Charlton Kings	1.9	76
Cheltenham	Benhall and The Reddings	2.2	86
Cheltenham	Warden Hill	2.3	90
Cheltenham	College	2.6	99
Cheltenham	Pittville	2.6	99
Cheltenham	Swindon Village	2.8	107
Cheltenham	Lansdown	3.1	113
Cheltenham	St Paul's	3.3	117
Cheltenham	All Saints	3.4	120
Cheltenham	Springbank	3.8	125
Cheltenham	St Peter's	4.3	127
Cheltenham	St Mark's	5.3	134
Cheltenham	Oakley	5.9	136
Cheltenham	Hesters Way	6.3	139



* 1 = "best" and 142 = "worst"

Table 5 shows overall claimant rates for Cheltenham Borough wards and their position relative to all wards in Gloucestershire.

PART 4: LOCAL AUTHORITY DISTRICT AND WARD ANALYSIS

4.2 Cotswold District

Claimant Rate and Claimant Count

Figure 7: Cotswold District claimant rate over the last year

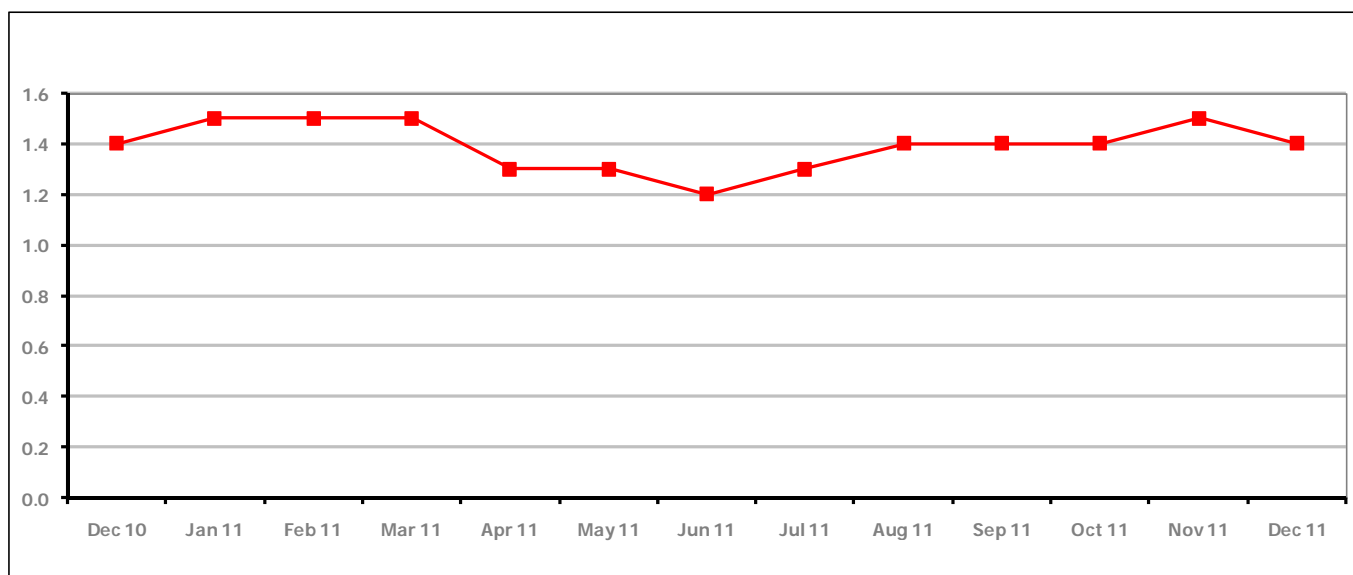


Figure 7 shows the claimant rate in Cotswold District decreased in December 2011 to 1.4%.

Figure 8: Cotswold District claimants - Month on Month and Year on Year change

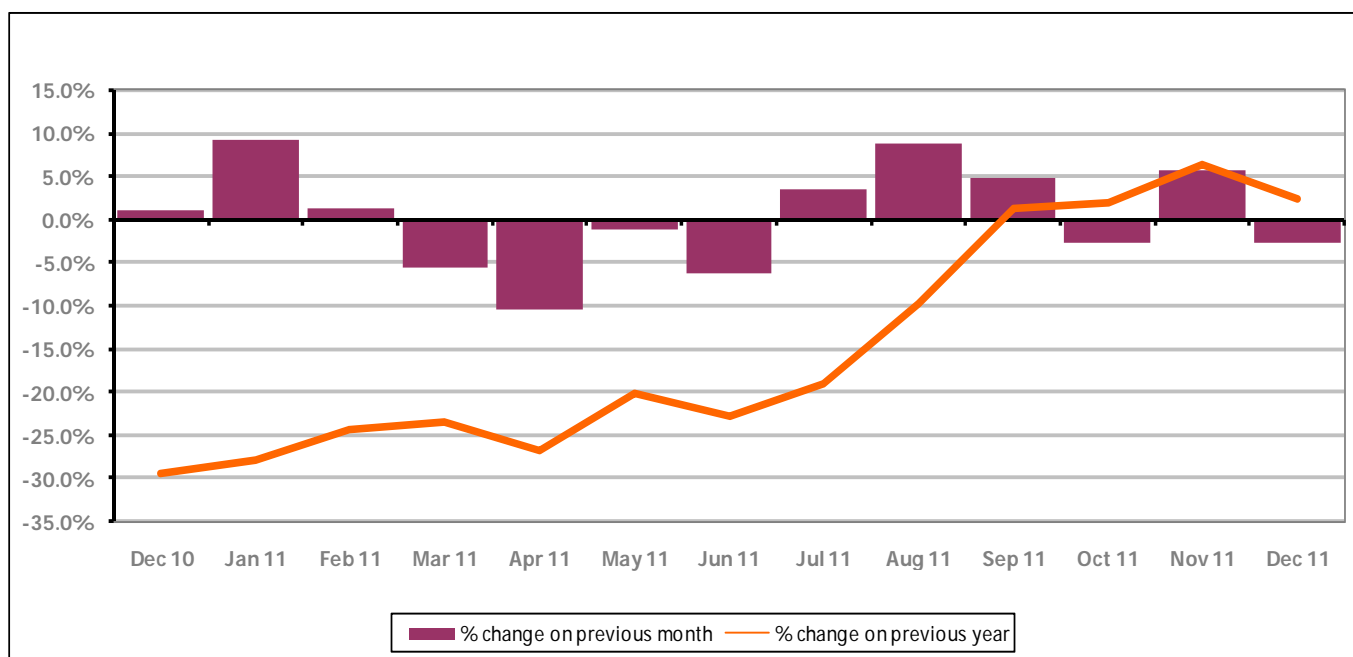


Figure 8 shows the claimant count decreased by -2.7% since November 2011. The change on the previous year has decreased from November 2011 to December 2011 to +2.4%.

PART 4: LOCAL AUTHORITY DISTRICT AND WARD ANALYSIS

4.2 Cotswold District continued...

Figure 9: Claimant rates across Cotswold District wards - December 2011

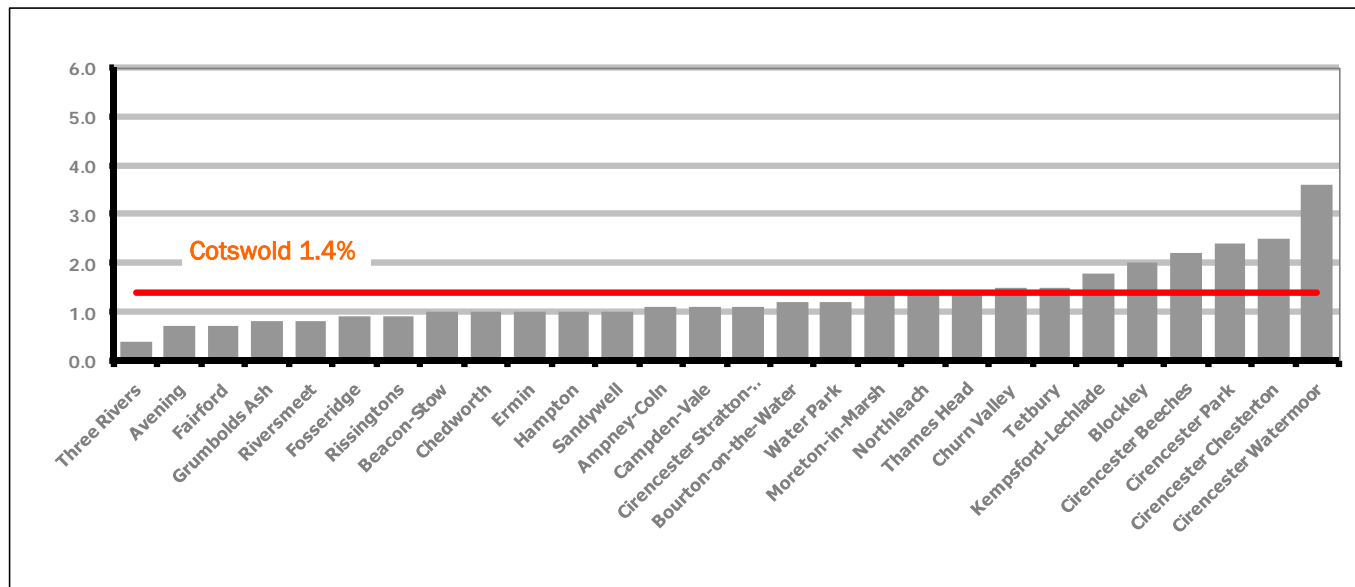
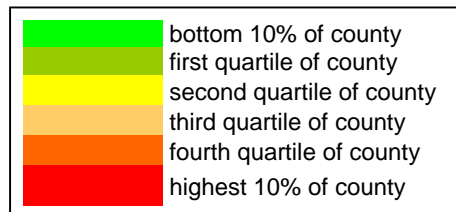


Figure 9 shows the claimant rates for Cotswold District wards. The red line represents the average claimant rate across the District of 1.4%. Eight wards lie above the average.

Table 6: Analysis of Claimant Count at Cotswold District ward level - December 2011

District	Ward	Rate	Rank*
Cotswolds	Three Rivers	0.4	1
Cotswolds	Avening	0.7	5
Cotswolds	Fairford	0.7	5
Cotswolds	Grumbolds Ash	0.8	10
Cotswolds	Riversmeet	0.8	10
Cotswolds	Fosseridge	0.9	15
Cotswolds	Rissingtons	0.9	15
Cotswolds	Beacon-Stow	1.0	18
Cotswolds	Chedworth	1.0	18
Cotswolds	Ermin	1.0	18
Cotswolds	Hampton	1.0	18
Cotswolds	Sandywell	1.0	18
Cotswolds	Ampney-Coln	1.1	24
Cotswolds	Campden-Vale	1.1	24
Cotswolds	Cirencester Stratton-Whiteway	1.1	24
Cotswolds	Bourton-on-the-Water	1.2	30
Cotswolds	Water Park	1.2	30
Cotswolds	Moreton-in-Marsh	1.4	44
Cotswolds	Northleach	1.4	44
Cotswolds	Thames Head	1.4	44
Cotswolds	Churn Valley	1.5	52
Cotswolds	Tetbury	1.5	52
Cotswolds	Kempsford-Lechlade	1.8	70
Cotswolds	Blockley	2.0	81
Cotswolds	Cirencester Beeches	2.2	86
Cotswolds	Cirencester Park	2.4	94
Cotswolds	Cirencester Chesterton	2.5	96
Cotswolds	Cirencester Watermoor	3.6	122



* 1 = "best" and 142 = "worst"

Table 6 shows overall claimant rates for Cotswold District wards and their position relative to all wards in Gloucestershire.

PART 4: LOCAL AUTHORITY DISTRICT AND WARD ANALYSIS

4.3 Forest of Dean District

Claimant Rate and Claimant Count

Figure 10: Forest of Dean District claimant rate over the last year

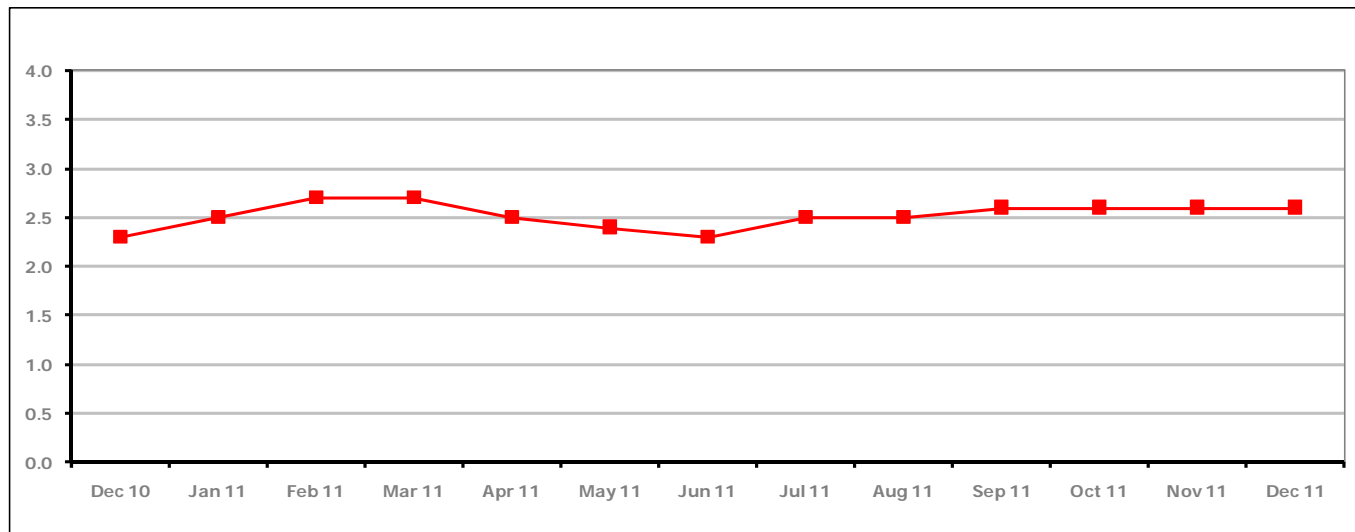


Figure 10 shows the claimant rate in the Forest of Dean remained the same as the last three months at 2.6%.

Figure 11: Forest of Dean District claimants - Month on Month and Year on Year change

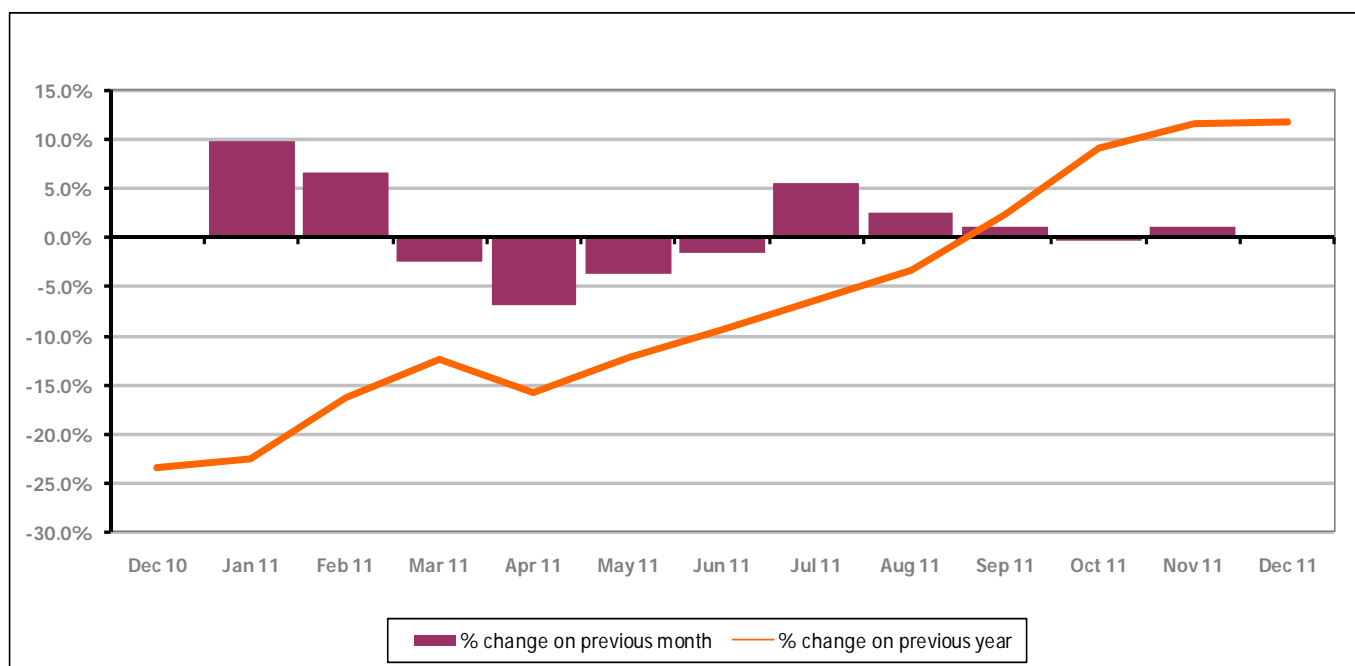


Figure 11 shows the claimant count increased by +0.3% since November 2011. The change on the previous year increased between November and December 2011 to +11.8%.

PART 4: LOCAL AUTHORITY DISTRICT AND WARD ANALYSIS

4.3 Forest of Dean District continued...

Figure 12: Claimant rates across Forest of Dean District wards - December 2011

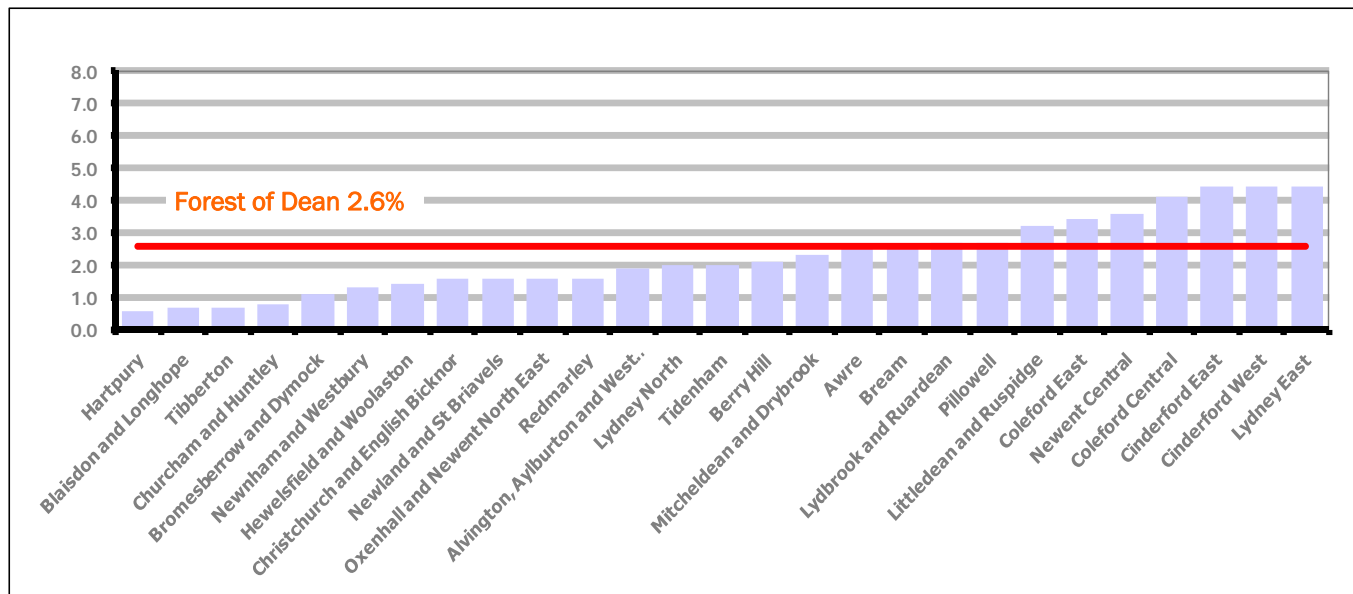
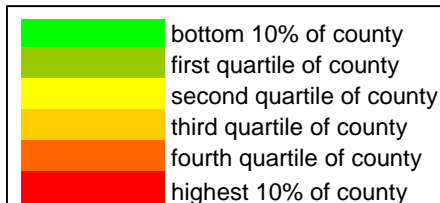


Figure 12 shows the claimant rates for Forest of Dean District wards. The red line represents the average claimant rate across the District of 2.6 %. Nine wards lie above the average.

Table 7: Analysis of Claimant Count at Forest of Dean District ward level - December 2011

District	Ward	Rate	Rank*
Forest	Hartpury	0.6	2
Forest	Blaisdon and Longhope	0.7	5
Forest	Tibberton	0.7	5
Forest	Churcham and Huntley	0.8	10
Forest	Bromesberrow and Dymock	1.1	24
Forest	Newnham and Westbury	1.3	34
Forest	Hewelsfield and Woolaston	1.4	44
Forest	Christchurch and English Bicknor	1.6	60
Forest	Newland and St Briavels	1.6	60
Forest	Oxenhall and Newent North East	1.6	60
Forest	Redmarley	1.6	60
Forest	Alvington, Aylburton and West Lydney	1.9	76
Forest	Lydney North	2.0	81
Forest	Tidenham	2.0	81
Forest	Berry Hill	2.1	84
Forest	Mitcheldean and Drybrook	2.3	90
Forest	Awre	2.5	96
Forest	Bream	2.6	99
Forest	Lydbrook and Ruardean	2.7	104
Forest	Pillowell	2.7	104
Forest	Littledean and Ruspidge	3.2	114
Forest	Coleford East	3.4	120
Forest	Newent Central	3.6	122
Forest	Coleford Central	4.1	126
Forest	Cinderford East	4.4	128
Forest	Cinderford West	4.4	128
Forest	Lydney East	4.4	128



* 1 = "best" and 142 = "worst"

Table 7 shows overall claimant rates for the Forest of Dean District wards and their position relative to all wards in Gloucestershire.

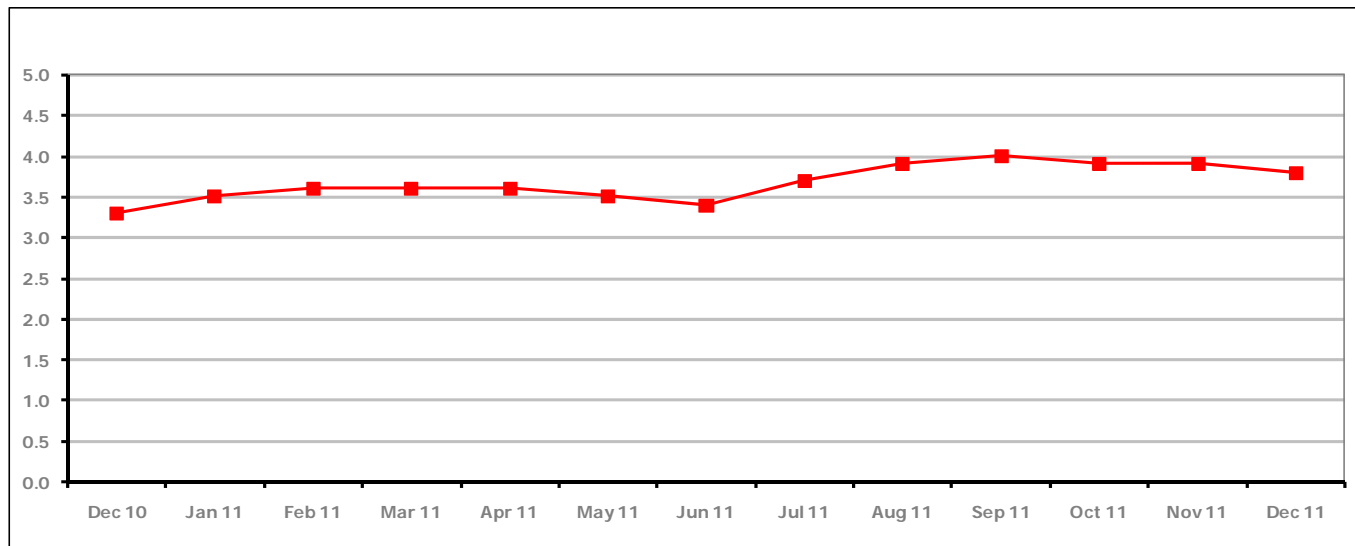
PART 4: LOCAL AUTHORITY DISTRICT AND WARD ANALYSIS**4.4 Gloucester City****Claimant Rate and Claimant Count***Figure 13: Gloucester City claimant rate over the last year*

Figure 13 shows the claimant rate for Gloucester City decreased in December 2011 to 3.8%.

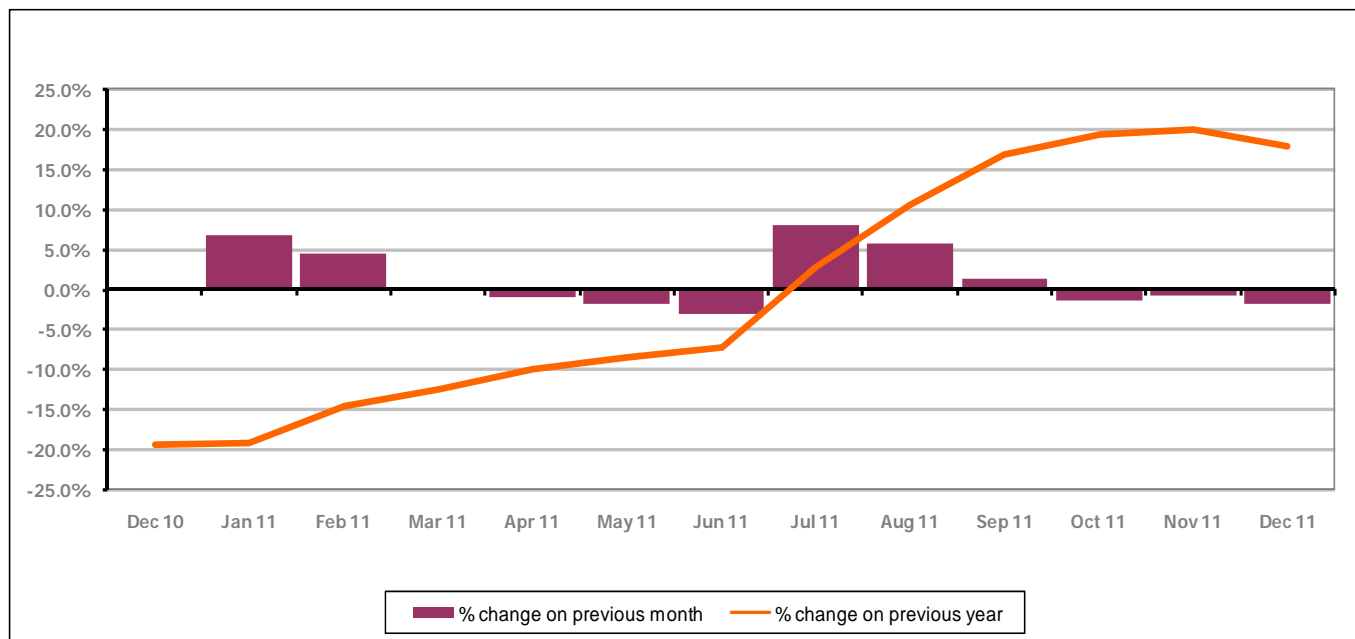
Figure 14: Gloucester City claimants - Month on Month and Year on Year change

Figure 14 shows the monthly claimant count decreased by -1.7% since November 2011. The change on the previous year has decreased between November 2011 and December 2011 to +17.9%.

PART 4: LOCAL AUTHORITY DISTRICT AND WARD ANALYSIS

4.4 Gloucester City continued...

Figure 15: Claimant rates across Gloucester City wards - December 2011

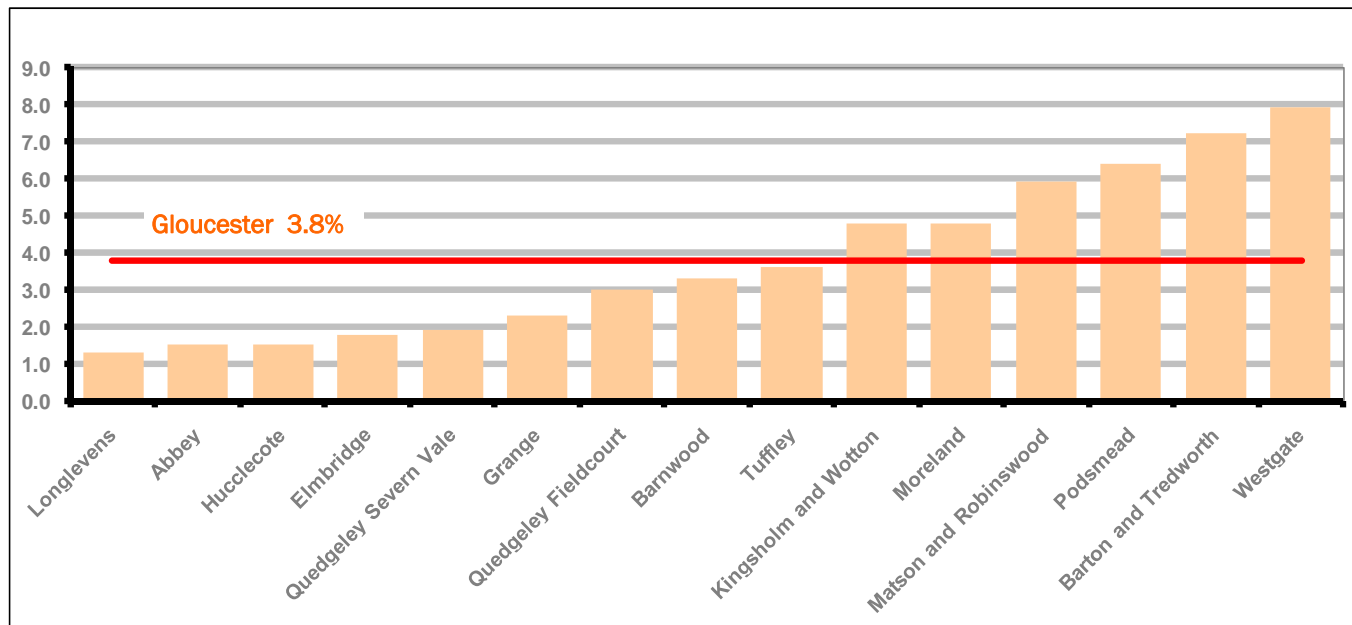
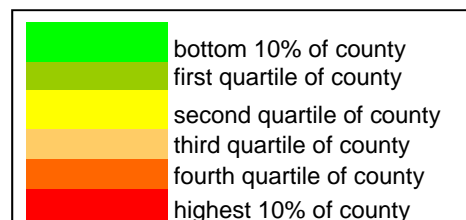


Figure 15 shows the claimant rates for Gloucester City district wards. The red line represents the average claimant rate across the City of 3.8%. Six wards lie above the average.

Table 8: Analysis of Claimant Count at Gloucester City ward level - December 2011

District	Ward	Rate	Rank*
Gloucester	Longlevens	1.3	34
Gloucester	Abbey	1.5	52
Gloucester	Hucclecote	1.5	52
Gloucester	Elmbridge	1.8	70
Gloucester	Quedgeley Severn Vale	1.9	76
Gloucester	Grange	2.3	90
Gloucester	Quedgeley Fieldcourt	3.0	111
Gloucester	Barnwood	3.3	117
Gloucester	Tuffley	3.6	122
Gloucester	Kingsholm and Wotton	4.8	131
Gloucester	Moreland	4.8	131
Gloucester	Matson and Robinswood	5.9	136
Gloucester	Podsmead	6.4	140
Gloucester	Barton and Tredworth	7.2	141
Gloucester	Westgate	7.9	142



* 1 = "best" and 142 = "worst"

Table 8 shows overall claimant rates for Gloucester City wards and their position relative to all wards in Gloucestershire.

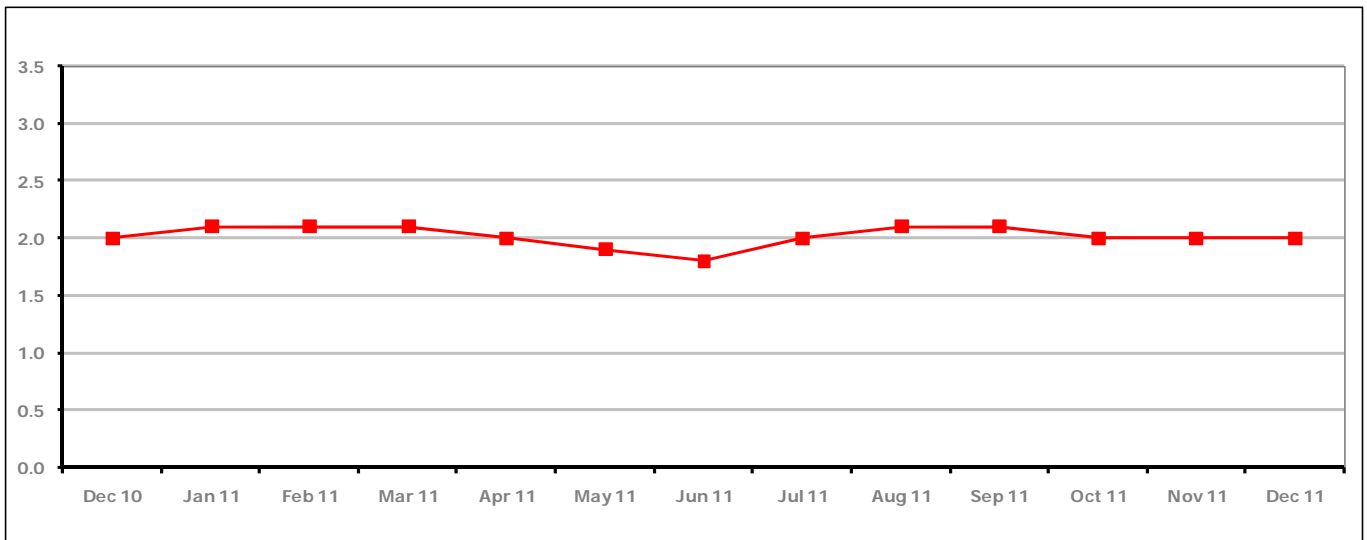
PART 4: LOCAL AUTHORITY DISTRICT AND WARD ANALYSIS**4.5 Stroud District****Claimant Rate and Claimant Count***Figure 16: Stroud District claimant rate over the last year*

Figure 16 shows the claimant rate for Stroud District remained the same as the last two months at 2.0%.

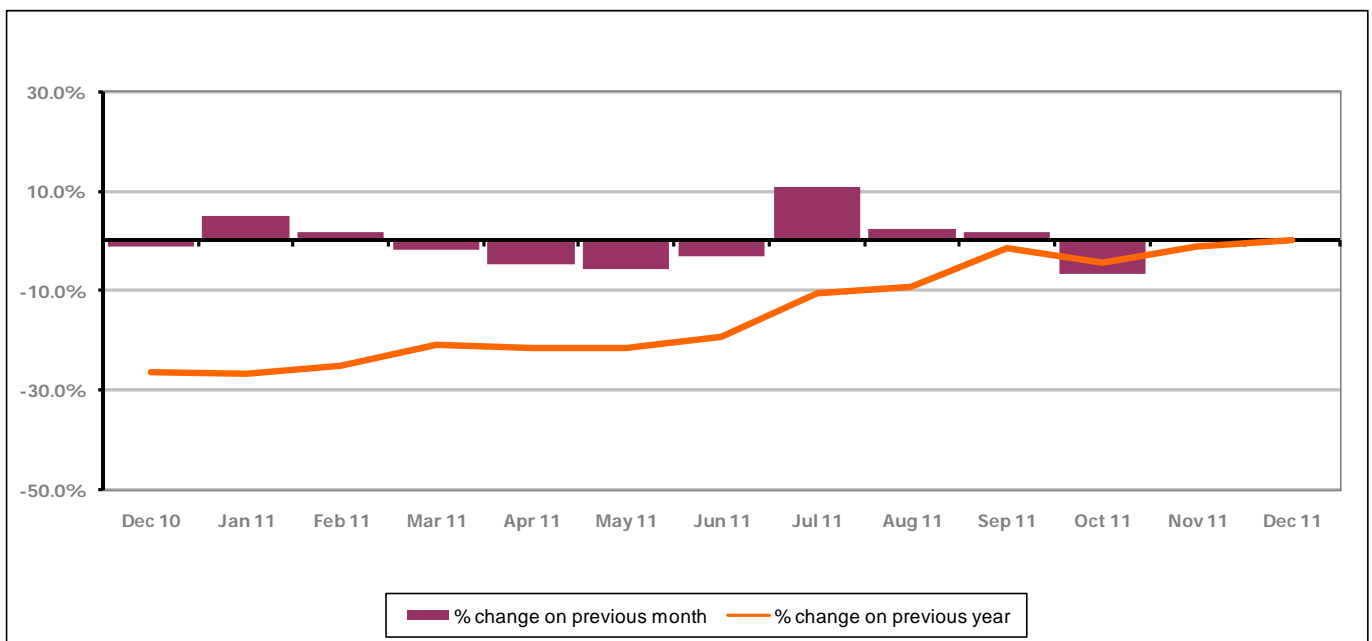
Figure 17: Stroud District claimants - Month on Month and Year on Year change

Figure 17 shows the monthly claimant count increased by +0.2% since November 2011. The change on the previous year has increased between November 2011 and December 2011 to +0.1%.

PART 4: LOCAL AUTHORITY AND DISTRICT ANALYSIS

4.5 Stroud District continued...

Figure 18: Claimant rates across Stroud District wards - December 2011

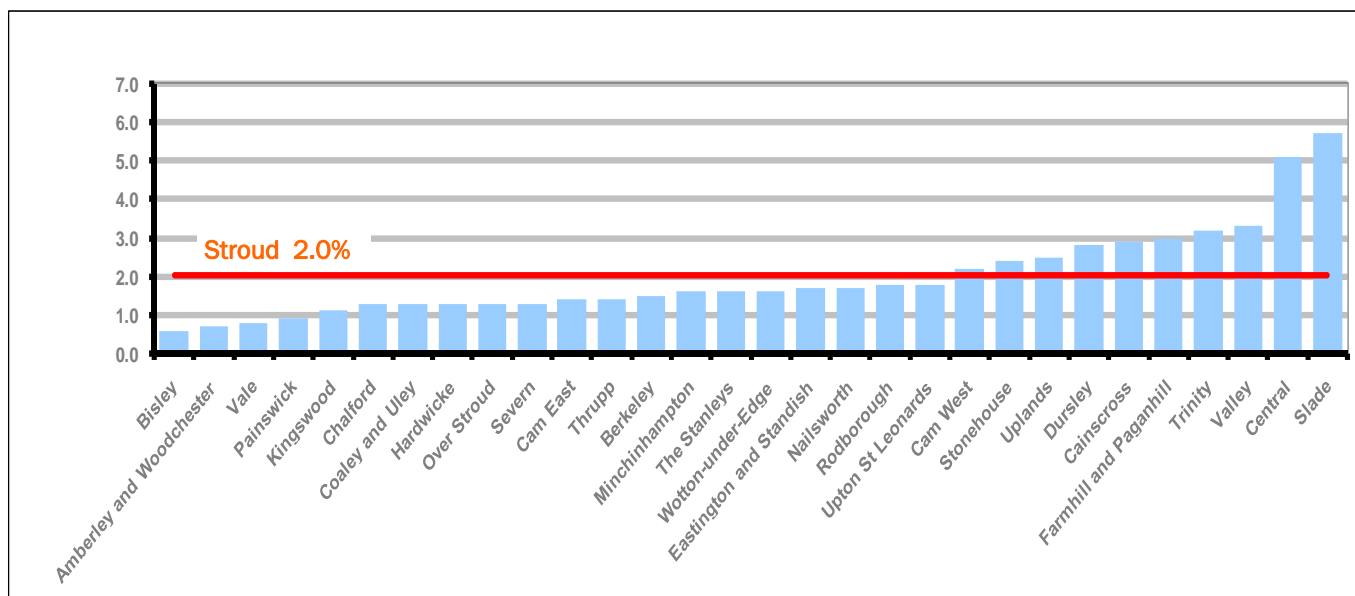
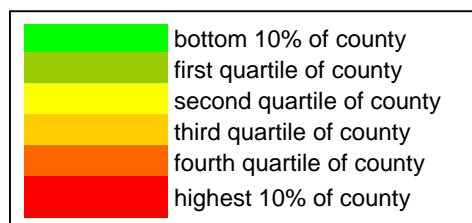


Figure 18 shows the claimant rates in Stroud District wards. The red line represents the average claimant rate across the District of 2.0%. Ten wards are above the average.

Table 9: Analysis of Claimant Count at Stroud District ward level - December 2011

District	Ward	Rate	Rank*
Stroud	Bisley	0.6	2
Stroud	Amberley and Woodchester	0.7	5
Stroud	Vale	0.8	10
Stroud	Painswick	0.9	15
Stroud	Kingswood	1.1	24
Stroud	Chalford	1.3	34
Stroud	Coaley and Uley	1.3	34
Stroud	Hardwicke	1.3	34
Stroud	Over Stroud	1.3	34
Stroud	Severn	1.3	34
Stroud	Cam East	1.4	44
Stroud	Thrupp	1.4	44
Stroud	Berkeley	1.5	52
Stroud	Minchinhampton	1.6	60
Stroud	The Stanleys	1.6	60
Stroud	Wotton-under-Edge	1.6	60
Stroud	Eastington and Standish	1.7	67
Stroud	Nailsworth	1.7	67
Stroud	Rodborough	1.8	70
Stroud	Upton St Leonards	1.8	70
Stroud	Cam West	2.2	86
Stroud	Stonehouse	2.4	94
Stroud	Uplands	2.5	96
Stroud	Dursley	2.8	107
Stroud	Cainscross	2.9	110
Stroud	Farmhill and Paganhill	3.0	111
Stroud	Trinity	3.2	114
Stroud	Valley	3.3	117
Stroud	Central	5.1	133
Stroud	Slade	5.7	135



* 1 = "best" and 142 = "worst"

Table 9 shows overall claimant rates for Stroud District wards and their position relative to all wards in Gloucestershire.

PART 4: LOCAL AUTHORITY DISTRICT AND WARD ANALYSIS

4.6 Tewkesbury District

Claimant Rate and Claimant Count

Figure 19: Tewkesbury District claimant rate over the last year

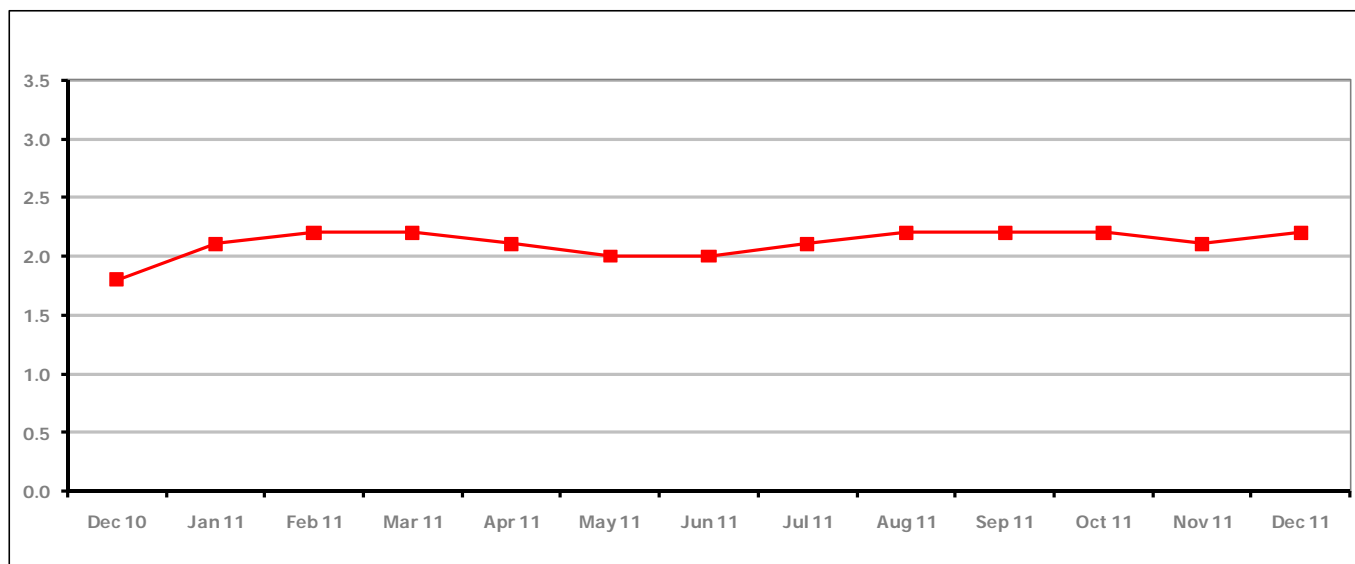


Figure 19 shows the claimant rate for Tewkesbury District increased in December 2011 to 2.2%.

Figure 20: Tewkesbury District claimants - Month on Month and Year on Year change

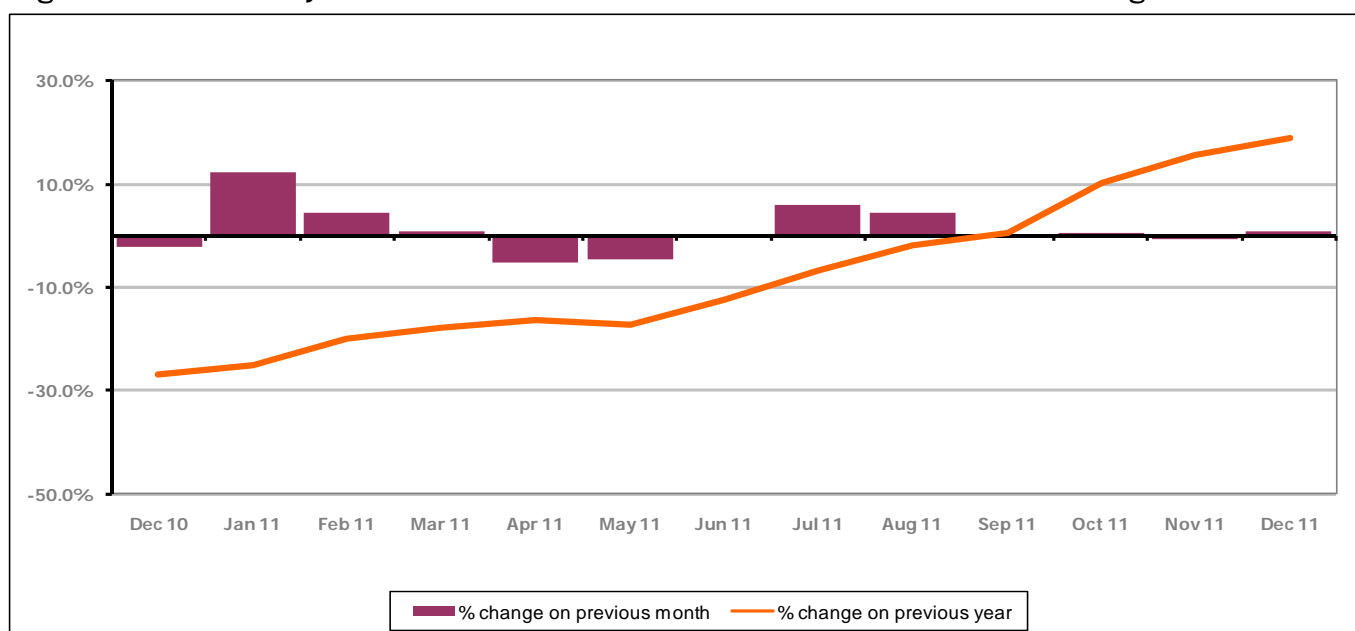


Figure 20 shows that the monthly claimant count increased in December 2011 by +0.7%. The change on the previous year increased between December 2011 and November 2011 to +18.8%.

PART 4: LOCAL AUTHORITY AND DISTRICT ANALYSIS

4.6 Tewkesbury District continued...

Figure 21: Claimant rates across Tewkesbury District wards - December 2011

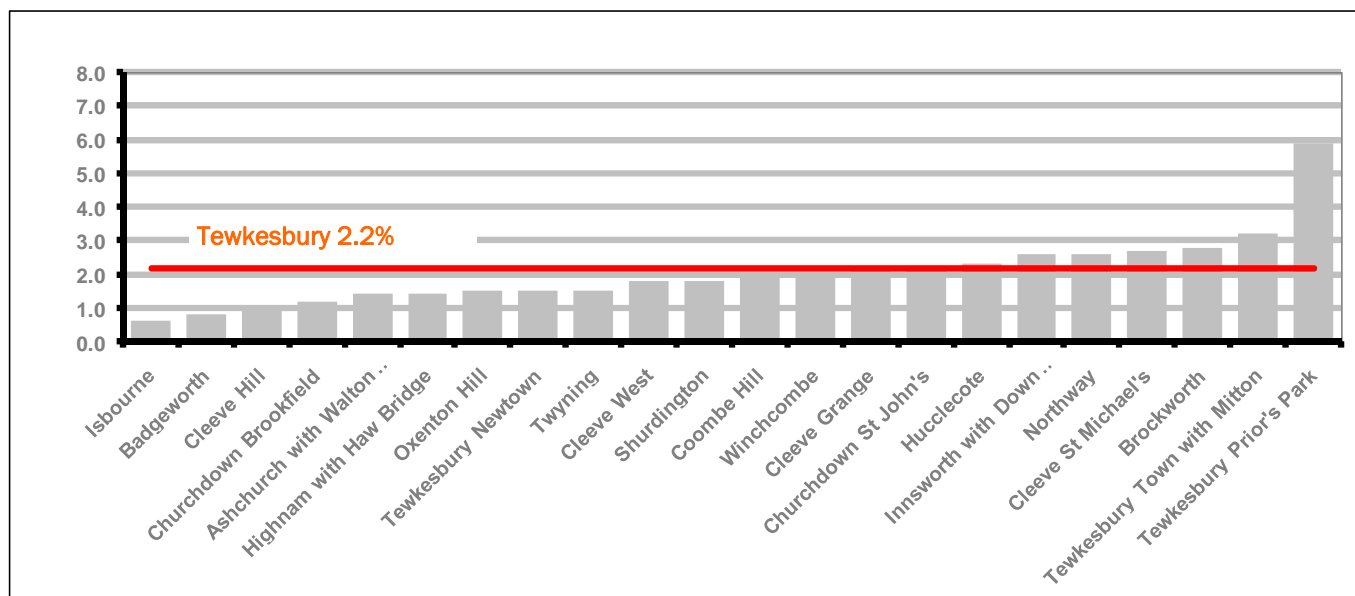
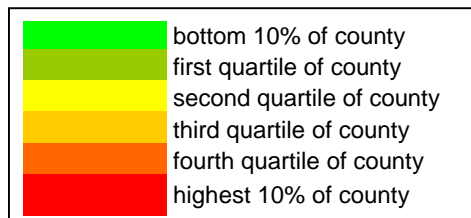


Figure 21 shows the claimant rates in Tewkesbury District wards. The red line represents the average claimant rate across the District of 2.2% and seven wards are above the average.

Table 10: Analysis of Claimant Count at Tewkesbury District level - December 2011

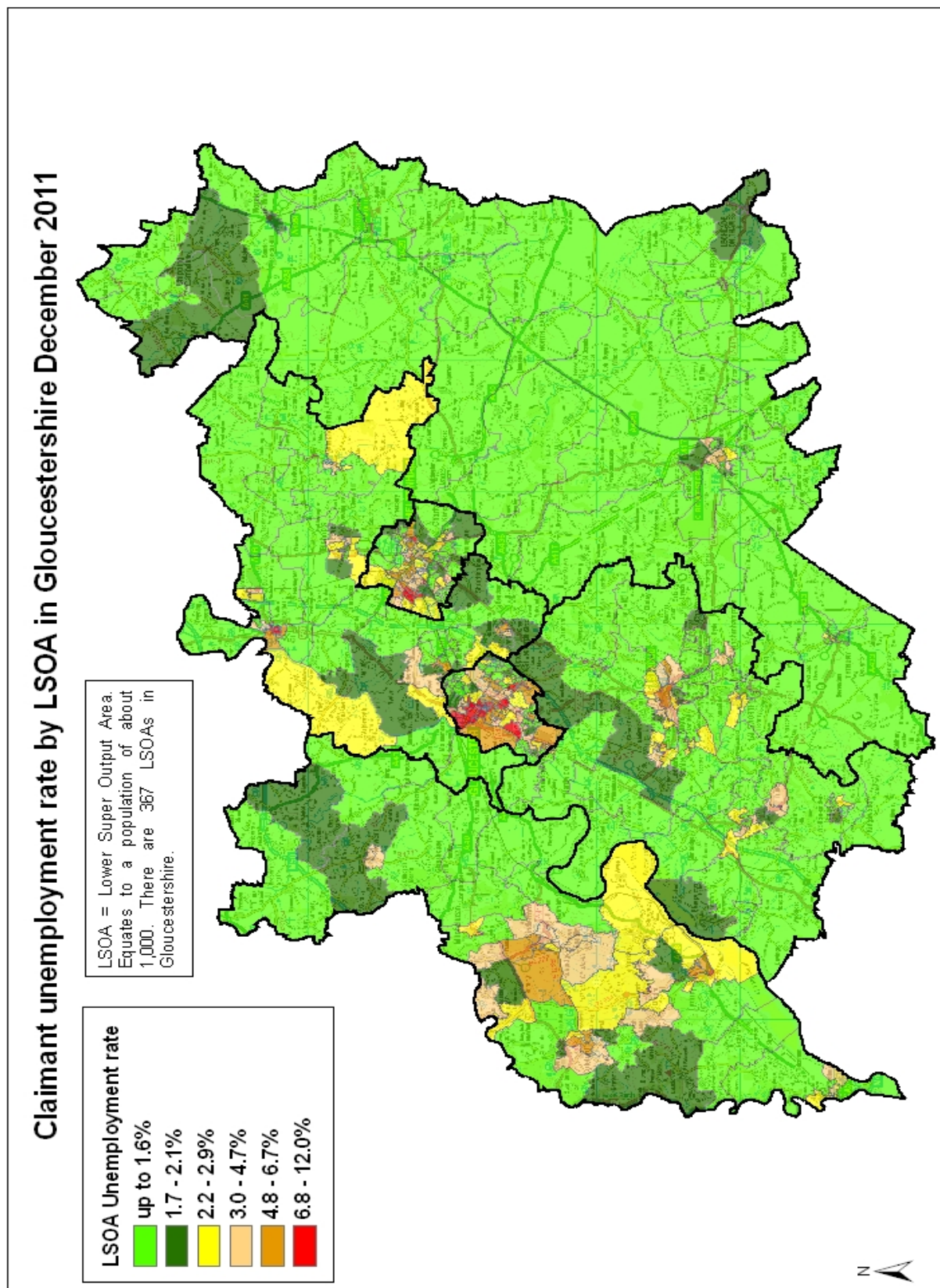
District	Ward	Rate	Rank*
Tewkesbury	Isbourne	0.6	2
Tewkesbury	Badgeworth	0.8	10
Tewkesbury	Cleeve Hill	1.0	18
Tewkesbury	Churchdown Brookfield	1.2	30
Tewkesbury	Ashchurch with Walton Cardiff	1.4	44
Tewkesbury	Highnam with Haw Bridge	1.4	44
Tewkesbury	Oxenton Hill	1.5	52
Tewkesbury	Tewkesbury Newtown	1.5	52
Tewkesbury	Twynning	1.5	52
Tewkesbury	Cleeve West	1.8	70
Tewkesbury	Shurdington	1.8	70
Tewkesbury	Coombe Hill	1.9	76
Tewkesbury	Winchcombe	1.9	76
Tewkesbury	Cleeve Grange	2.1	84
Tewkesbury	Churchdown St John's	2.2	86
Tewkesbury	Hucclecote	2.3	90
Tewkesbury	Innsworth with Down Hatherley	2.6	99
Tewkesbury	Northway	2.6	99
Tewkesbury	Cleeve St Michael's	2.7	104
Tewkesbury	Brockworth	2.8	107
Tewkesbury	Tewkesbury Town with Mitton	3.2	114
Tewkesbury	Tewkesbury Prior's Park	5.9	136



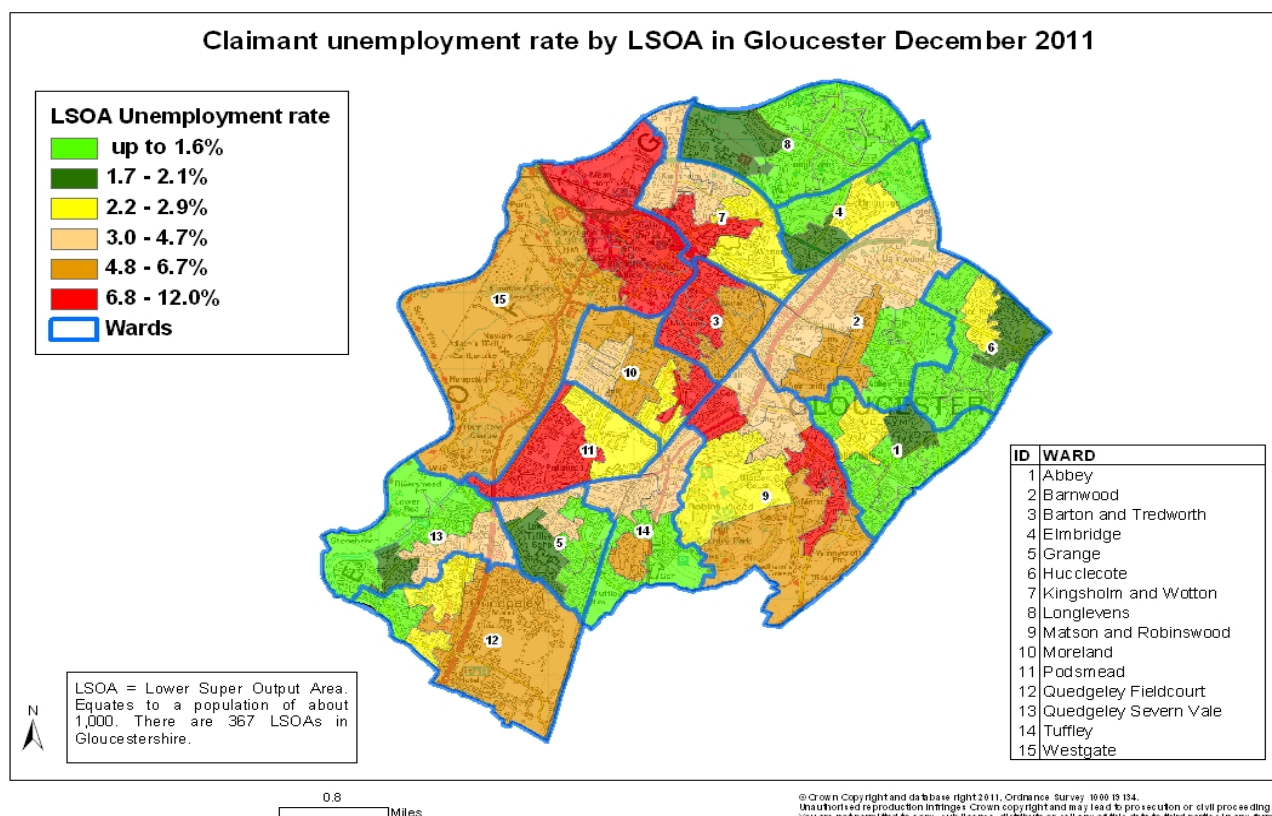
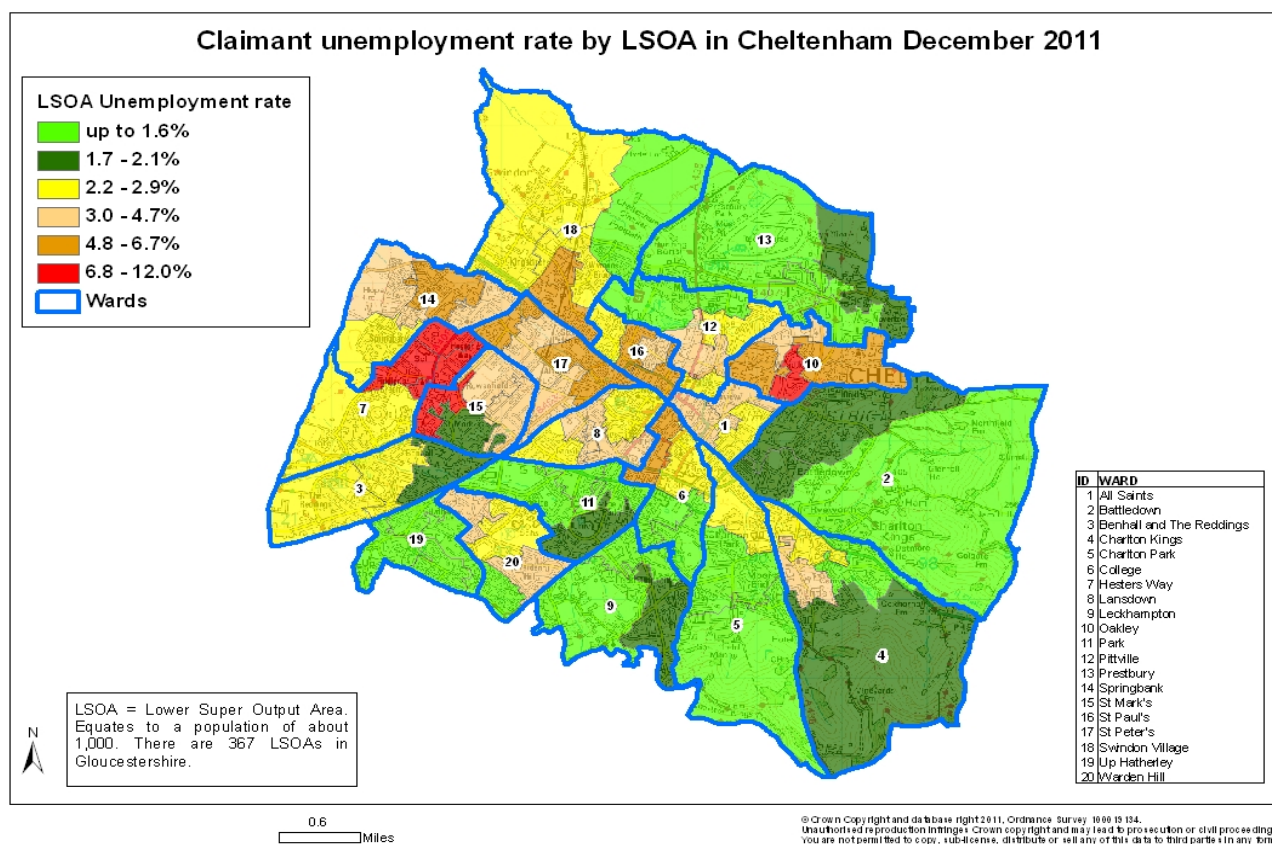
* 1 = "best" and 142 = "worst"

Table 10 shows overall claimant rates for Tewkesbury District wards and their position relative to all wards in Gloucestershire.

PART 5: MAP SHOWING DISTRIBUTION OF CLAIMANT RATE ACROSS GLOUCESTERSHIRE



PART 5: MAP SHOWING DISTRIBUTION OF CLAIMANT RATE ACROSS GLOUCESTERSHIRE



PART 6: YOUNG PEOPLE NOT IN EDUCATION, EMPLOYMENT OR TRAINING (NEET) IN GLOUCESTERSHIRE

Data provided by Prospects, the Connexions service in Gloucestershire on the situation of young people (16-18) in Gloucestershire who are not in education, employment or formal training.

Connexions Gloucestershire is required to report performance with the 16-18 age range against nationally defined criteria for counting the NEET group. The NEET group includes young people actively seeking education, employment or training as well as those young people who are either not yet ready or who are unable to access these opportunities because of their personal circumstances. The figures quoted below include young people in both of these categories.

Summary

As at the end of December 2011 there were 783 young people aged 16-18 not in education, employment or training in Gloucestershire and this figure translates into an adjusted (*) 16-18 NEET population of 5.1%. The total number of NEET decreased by 108 young people in December 2011 compared to November 2011. All districts saw a decrease in their NEET figure.

Total NEET Group by District Area

December 2011 NEET Data

	Cheltenham	Cotswold	Forest	Gloucester	Stroud	Tewkesbury	Total
Number of NEET	172	66	124	225	110	86	783
Cohort	2804	2241	2445	4933	3109	1968	17500
% NEET	6.1%	2.9%	5.1%	4.6%	3.5%	4.4%	5.1%

If you would like to receive any further information on Gloucestershire's NEET strategy then please contact Ruth.Critchlow@gloucestershire.gov.uk or telephone 01452 551267.

(*) Adjustment includes a proportion of young people aged 16-18 whose outcomes are not-known to Connexions Gloucestershire