

Unemployment Bulletin

Issue 130 May 2019

Contents

Part 1: Summary A summary of unemployment data at district, County, regional and national level	1
Part 2: County Unemployment figures for the County compared to the South West and the rest of the UK	3
Part 3: Districts A comparative break down of unemployment figures by district	4
Part 4: Wards Further breakdown of unemployment figures by ward:	
Cheltenham	6
Cotswolds	8
Forest of Dean	10
Gloucester	12
Stroud	14
Tewkesbury	16
Part 5: Map Distribution of claimant rate across Gloucestershire	18
Part 6: Youth Unemployment Unemployment data for the 18-24 year old age group	20
Part 7: Young People Data about Young People Not in Education, Employment or Training (NEET)	21

The Claimant Count is a measure of the number of people who are unemployed and claiming benefits. From 1996 until the recent introduction of Universal Credit, this was based on the number of people claiming Jobseeker's Allowance. However, since its introduction some unemployment benefit claimants will be claiming Universal Credit instead. **To reflect this change, the Claimant Count has been expanded to include people claiming Jobseeker's Allowance plus those who claim Universal Credit and who are searching for work.**

Gloucestershire is in the process of transitioning to full Universal Credit. This means a broader span of claimants will be required to look for work than previously under Jobseekers Allowance. As more people are brought within the coverage of Universal Credit, the Claimant Count is set to rise noticeably over time. This will happen irrespective of how the economy performs and is a feature of the design of Universal Credit which brings additional groups of people into 'Searching for Work' conditionality (and therefore the Claimant Count), to help encourage and support these claimants into work.

For more information about Universal Credit please see the [ONS website](https://www.ons.gov.uk/universal-credit).

INTRODUCTION

The Unemployment Bulletin provides a monthly update on unemployment data for Gloucestershire, the South West region and the United Kingdom. It is produced by the Data & Analysis Team in the County Council's Planning, Performance and Change function. The data are sourced from the Office for National Statistics via Nomis (www.nomis.co.uk). All data are rounded to the nearest 5 and may not precisely add to the sum of the number of people claiming JSA, and the number of people claiming Universal Credit required to seek work, due to independent rounding.

PART 1: SUMMARY

The claimant rate in Gloucestershire was **1.8% in May 2019**. The South West rate and UK remained the same as last month at 2.0% and 2.7% respectively. Gloucestershire's rate was 0.2% lower than the South West average of 2.0%, and 0.9% lower than the UK average of 2.7%.

The claimant count in Gloucestershire in May 2019 increased by **100 people**. The amount of people claiming in May 2019 was 1.4% higher than the number in April 2019. This compares to a 0.1% increase in the South West and a 1.3% increase for the UK.

Produced by:

Data & Analysis Team
Planning, Performance and Change
Gloucestershire County Council
June 2019

DISTRICTS AT A GLANCE

At a glance unemployment information grouped by district. Includes:

Claim count: Total number of people claiming Job Seekers Allowance and Universal Credit who are not in work in May 2019

Compared to last month: How much larger/smaller May's claimant count is compared to April expressed as a %

Claimant rate: The % of working age population claiming Job Seekers Allowance and Universal Credit who are not in work in May 2019

Highest claiming ward: The ward with the highest claim count in that district and the rate

CHELTEMHAM BOROUGH

Claim count:	1,365
Compared to last month:	2.6%
Claimant rate:	1.8%
Highest claiming ward	Hester's Way (4.3%)

GLOUCESTER CITY

Claim count:	2,140
Compared to last month:	1.2%
Claimant rate:	2.6%
Highest claiming wards	Westgate (5.3%)

COTSWOLD DISTRICT

Claim count:	690
Compared to last month:	2.2%
Claimant rate:	1.3%
Highest claiming ward	Watermoor (3.8%)

STROUD DISTRICT

Claim count:	910
Compared to last month:	1.7%
Claimant rate:	1.3%
Highest claiming wards	Slade (3.0%)

FOREST OF DEAN

Claim count:	1,075
Compared to last month:	0.5%
Claimant rate:	2.1%
Highest claiming ward	Lydney East (3.9%)

TEWKESBURY BOROUGH

Claim count:	845
Compared to last month:	0.0%
Claimant rate:	1.6%
Highest claiming ward	Tewkesbury Prior's Park (3.7%)

PART 2: UK, SW AND GLOUCESTERSHIRE INDICATORS

The unemployment situation in Gloucestershire compared to the South West and the UK.

Claimant Rate

Figure 1: Claimant Rate for Gloucestershire, the South West and UK over the past year

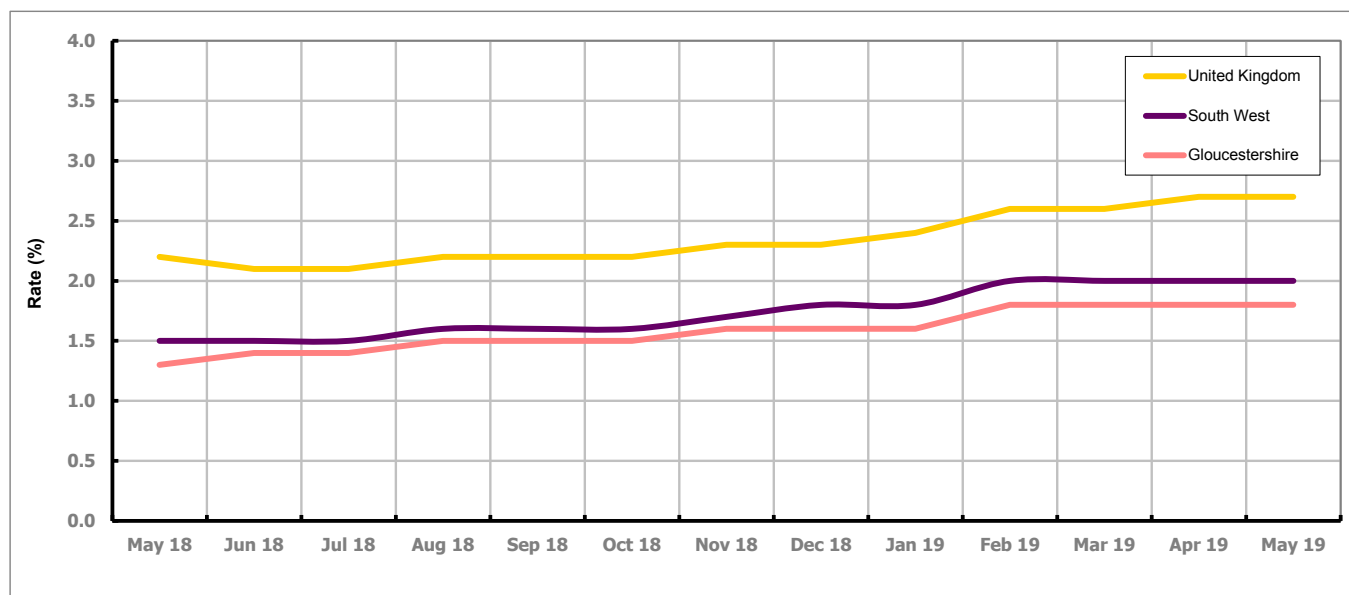


Figure 1 shows the claimant rate for Gloucestershire at 1.8% in May 2019. The Gloucestershire rate has been lower than the South West average since December 2015, with the exception of April and May 2016 when it was the same. It has been persistently lower by approximately 0.8% against the UK average.

Claimant Count

Table 1: Analysis of UK, South West and Gloucestershire Claimant Counts

Area	Claimant Count in May 2019	% change on April 2019	Consecutive months increasing
UK	1,120,935	1.3%	10
South West	67,530	0.1%	10
Gloucestershire	7,030	1.4%	11

Table 1 shows that in May 2019, the number of claimants in Gloucestershire was 1.4% higher than the number in April 2019.

PART 3: LOCAL AUTHORITY DISTRICT ANALYSIS

Claimant Rate and Claimant Count

Figure 2: Claimant Rate (%) across Gloucestershire - May 2019

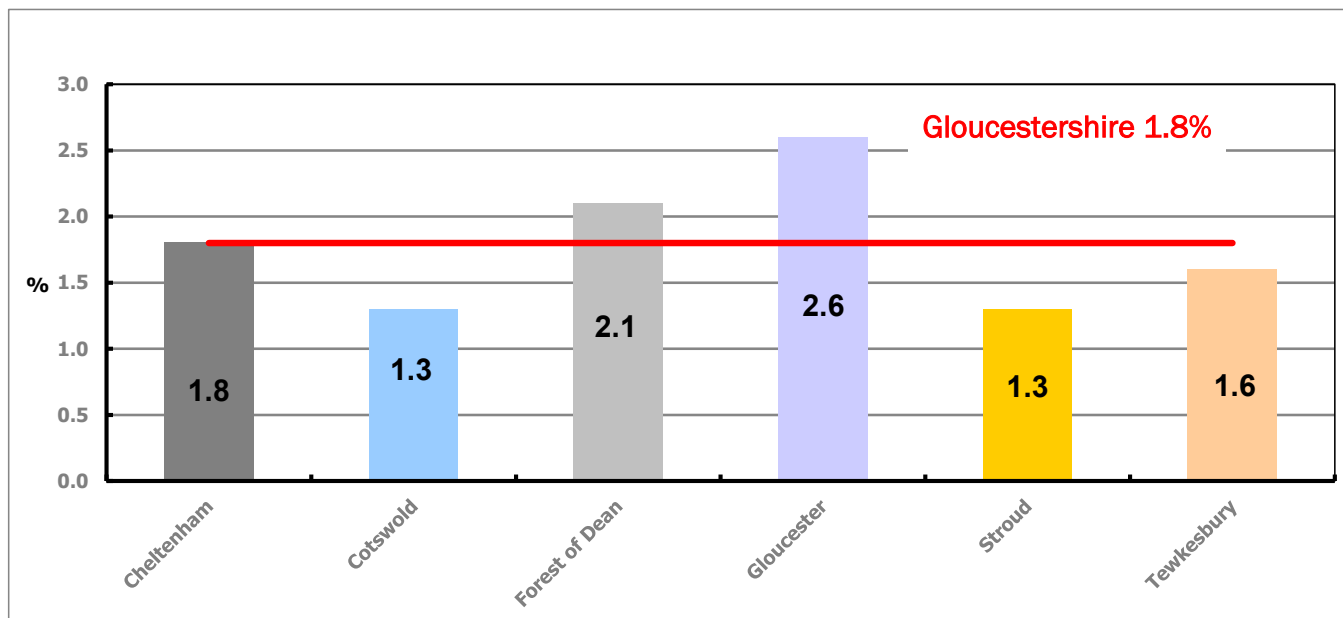


Figure 2 shows the claimant rate for May 2019 in Gloucestershire. The rate was the same as last month in all districts.

Table 2: Analysis of Gloucestershire and District Claimant Counts

Total	May 19 Number	May 19 Rate	Apr 19 Number	Apr 19 Rate	Monthly change	% monthly change	Monthly change of rate
Gloucestershire	7,030	1.8	6,930	1.8	100	1.4%	0.0
Cheltenham	1,365	1.8	1,330	1.8	35	2.6%	0.0
Cotswold	690	1.3	675	1.3	15	2.2%	0.0
Forest of Dean	1,075	2.1	1,070	2.1	5	0.5%	0.0
Gloucester	2,140	2.6	2,115	2.6	25	1.2%	0.0
Stroud	910	1.3	895	1.3	15	1.7%	0.0
Tewkesbury	845	1.6	845	1.6	0	0.0%	0.0

Table 2 shows the change in the claimant count in May 2019 compared to April 2019. Cheltenham, Cotswold, Forest of Dean, Gloucester and Stroud saw an increase in the number of claimants, while Tewkesbury saw no change.

Table 3: Analysis of Male Gloucestershire and District Claimant Counts

Male	May 19 Number	May 19 Rate	Apr 19 Number	Apr 19 Rate	Monthly change	% monthly change	Monthly change of rate
Gloucestershire	4,100	2.2	4,030	2.1	70	1.7%	0.1
Cheltenham	815	2.2	795	2.1	20	2.5%	0.1
Cotswold	395	1.6	370	1.5	25	6.8%	0.1
Forest of Dean	640	2.5	625	2.5	15	2.4%	0.0
Gloucester	1,290	3.1	1,270	3.1	20	1.6%	0.0
Stroud	495	1.4	500	1.4	-5	-1.0%	0.0
Tewkesbury	470	1.8	470	1.8	0	0.0%	0.0

Table 3 shows the change in the male claimant count in May 2019 compared to April 2019. Stroud saw a decrease in the number of male claimants, while Tewkesbury saw no change. All other districts saw an increase.

Table 4: Analysis of Female Gloucestershire and District Claimant Counts

Female	May 19 Number	May 19 Rate	Apr 19 Number	Apr 19 Rate	Monthly change	% monthly change	Monthly change of rate
Gloucestershire	2,925	1.5	2,905	1.5	20	0.7%	0.0
Cheltenham	550	1.5	540	1.5	10	1.9%	0.0
Cotswold	295	1.1	300	1.2	-5	-1.7%	-0.1
Forest of Dean	435	1.7	445	1.7	-10	-2.2%	0.0
Gloucester	850	2.1	845	2.1	5	0.6%	0.0
Stroud	420	1.2	400	1.1	20	5.0%	0.1
Tewkesbury	375	1.4	375	1.4	0	0.0%	0.0

Table 4 shows the change in the female claimant count in May 2019 compared to April 2019. Cheltenham, Gloucester and Stroud saw an increase in the number of female claimants, while Cotswold and the Forest of Dean saw a decrease. Tewkesbury saw no change.

PART 4: LOCAL AUTHORITY DISTRICT AND WARD ANALYSIS

This section covers the six districts and a comparison of their constituent wards.

4.1 Cheltenham Borough

Claimant Rate and Claimant Count

Figure 3: Cheltenham Borough claimant rate over the last year

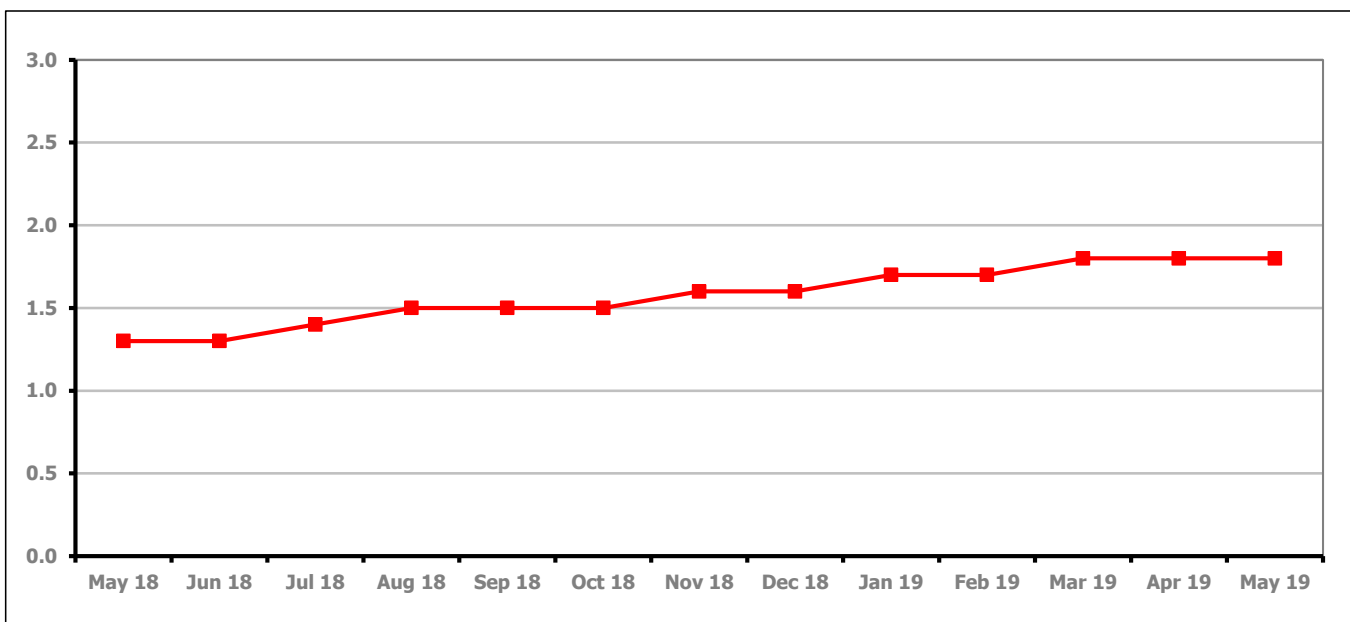


Figure 3 shows the claimant rate in Cheltenham stayed the same as last month at 1.8%.

Figure 4: Claimant rates across Cheltenham Borough wards - May 2019

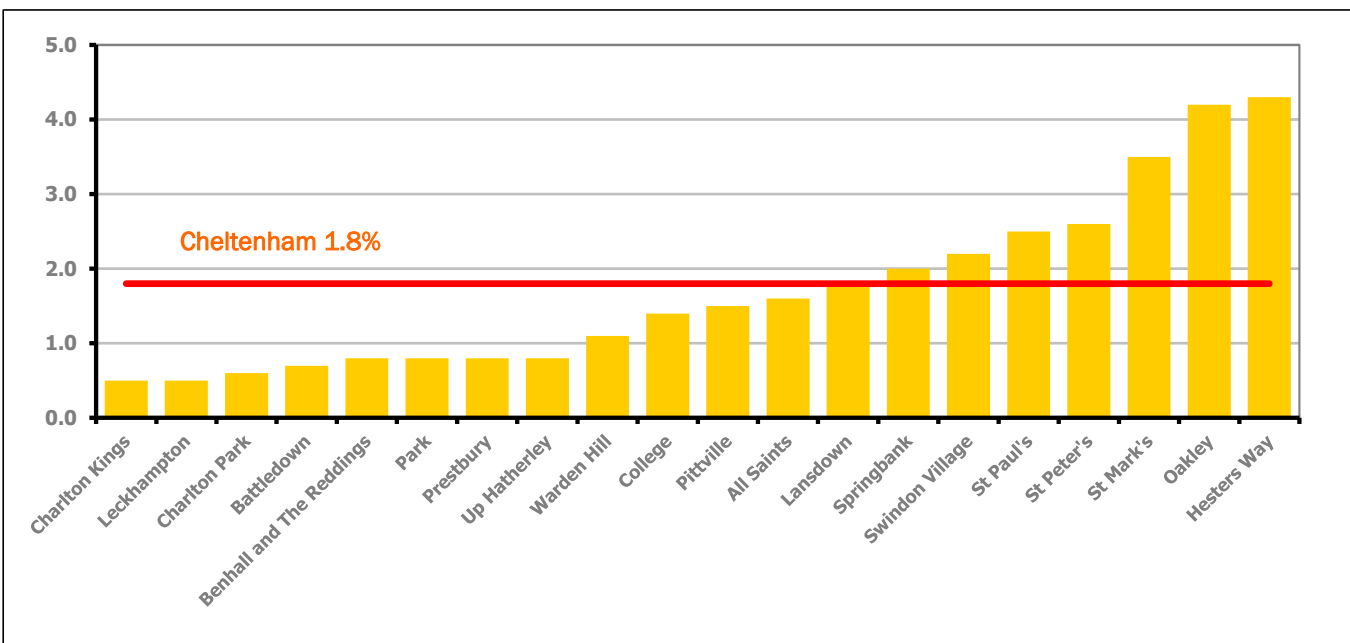


Figure 4 shows the claimant rates for Cheltenham Borough wards. The red line represents the average claimant rate across the Borough of 1.8%. Seven wards lie above the average.

PART 4: LOCAL AUTHORITY DISTRICT AND WARD ANALYSIS

4.1 Cheltenham Borough continued...

Table 5: Analysis of Claimant Count at Cheltenham Borough ward level - May 2019

District	Ward	Rate	Rank*
Cheltenham	Charlton Kings	0.5	4
Cheltenham	Leckhampton	0.5	4
Cheltenham	Charlton Park	0.6	6
Cheltenham	Battledown	0.7	14
Cheltenham	Benhall and The Reddings	0.8	21
Cheltenham	Park	0.8	21
Cheltenham	Prestbury	0.8	21
Cheltenham	Up Hatherley	0.8	21
Cheltenham	Warden Hill	1.1	47
Cheltenham	College	1.4	80
Cheltenham	Pittville	1.5	87
Cheltenham	All Saints	1.6	93
Cheltenham	Lansdown	1.8	101
Cheltenham	Springbank	2.0	109
Cheltenham	Swindon Village	2.2	115
Cheltenham	St Paul's	2.5	123
Cheltenham	St Peter's	2.6	124
Cheltenham	St Mark's	3.5	134
Cheltenham	Oakley	4.2	141
Cheltenham	Hesters Way	4.3	142

	lowest 10% of county
	first quartile of county
	second quartile of county
	third quartile of county
	fourth quartile of county
	highest 10% of county

* 1 = "best" and 146 = "worst"

Table 5 shows overall claimant rates for Cheltenham Borough wards and their position relative to all wards in Gloucestershire.

PART 4: LOCAL AUTHORITY DISTRICT AND WARD ANALYSIS

4.2 Cotswold District

Claimant Rate and Claimant Count

Figure 5: Cotswold District claimant rate over the last year

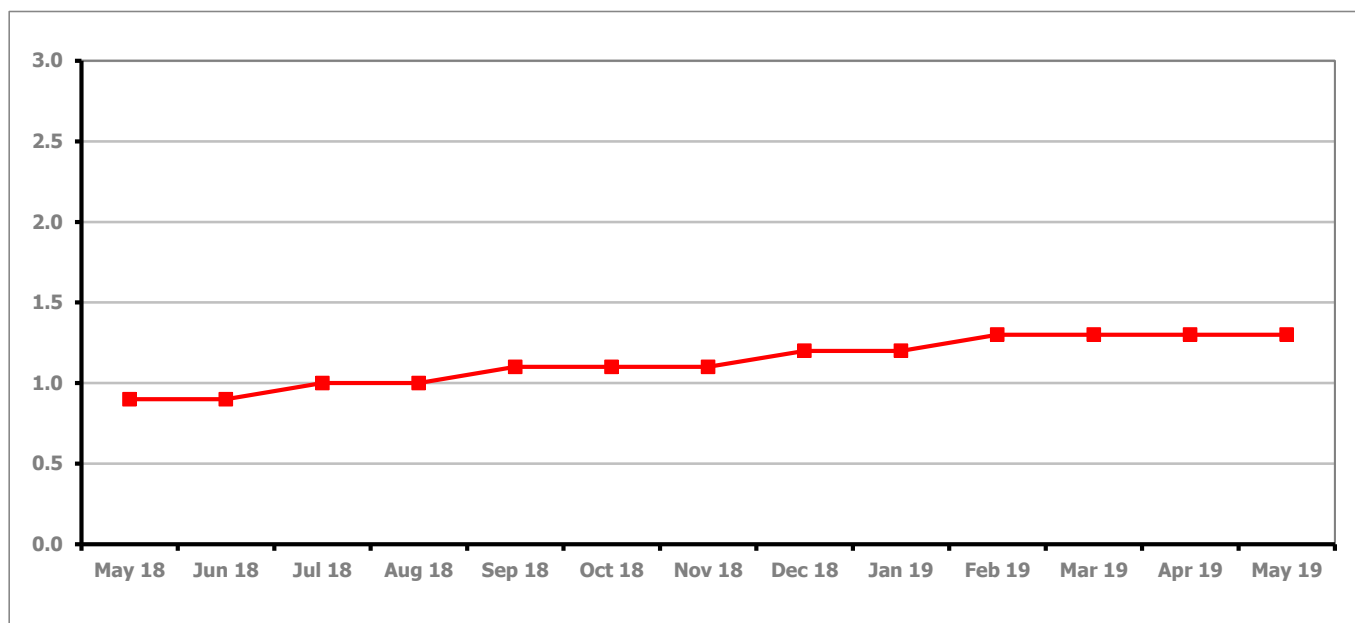


Figure 5 shows the claimant rate in Cotswold District remained the same as last month at 1.3%.

Figure 6: Claimant rates across Cotswold District wards - May 2019

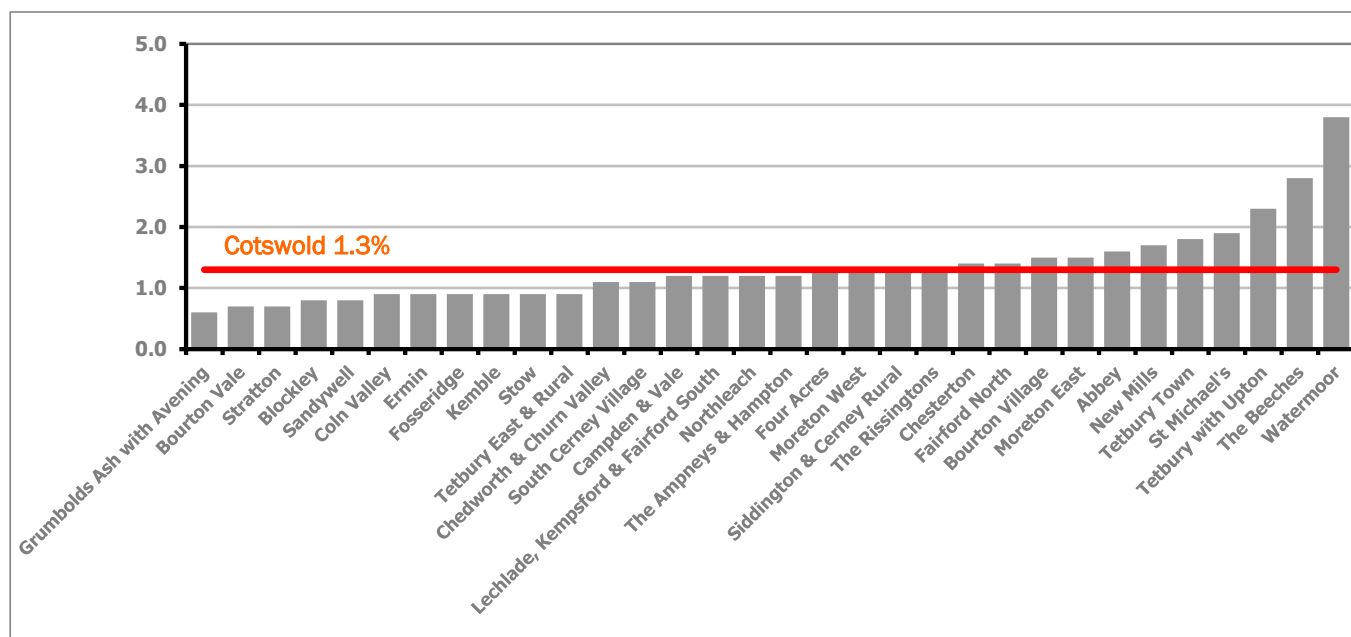


Figure 6 shows the claimant rates for Cotswold District wards. The red line represents the average claimant rate across the District of 1.3%. Eleven wards lie above the average.

PART 4: LOCAL AUTHORITY DISTRICT AND WARD ANALYSIS

4.2 Cotswold District continued...

Table 6: Analysis of Claimant Count at Cotswold District ward level - May 2019

District	Ward	Rate	Rank*
Cotswolds	Grumbolds Ash with Avening	0.6	6
Cotswolds	Bourton Vale	0.7	14
Cotswolds	Stratton	0.7	14
Cotswolds	Blockley	0.8	21
Cotswolds	Sandywell	0.8	21
Cotswolds	Coln Valley	0.9	30
Cotswolds	Ermin	0.9	30
Cotswolds	Fosseridge	0.9	30
Cotswolds	Kemble	0.9	30
Cotswolds	Stow	0.9	30
Cotswolds	Tetbury East & Rural	0.9	30
Cotswolds	Chedworth & Churn Valley	1.1	47
Cotswolds	South Cerney Village	1.1	47
Cotswolds	Campden & Vale	1.2	59
Cotswolds	Lechlade, Kempsford & Fairford South	1.2	59
Cotswolds	Northleach	1.2	59
Cotswolds	The Ampneys & Hampton	1.2	59
Cotswolds	Four Acres	1.3	69
Cotswolds	Moreton West	1.3	69
Cotswolds	Siddington & Cerney Rural	1.3	69
Cotswolds	The Rissingtons	1.3	69
Cotswolds	Chesterton	1.4	80
Cotswolds	Fairford North	1.4	80
Cotswolds	Bourton Village	1.5	87
Cotswolds	Moreton East	1.5	87
Cotswolds	Abbey	1.6	93
Cotswolds	New Mills	1.7	100
Cotswolds	Tetbury Town	1.8	101
Cotswolds	St Michael's	1.9	107
Cotswolds	Tetbury with Upton	2.3	117
Cotswolds	The Beeches	2.8	129
Cotswolds	Watermoor	3.8	138

	lowest 10% of county
	first quartile of county
	second quartile of county
	third quartile of county
	fourth quartile of county
	highest 10% of county

* 1 = "best" and 146 = "worst"

Table 6 shows overall claimant rates for Cotswold District wards and their position relative to all wards in Gloucestershire.

PART 4: LOCAL AUTHORITY DISTRICT AND WARD ANALYSIS

4.3 Forest of Dean District

Claimant Rate and Claimant Count

Figure 7: Forest of Dean District claimant rate over the last year

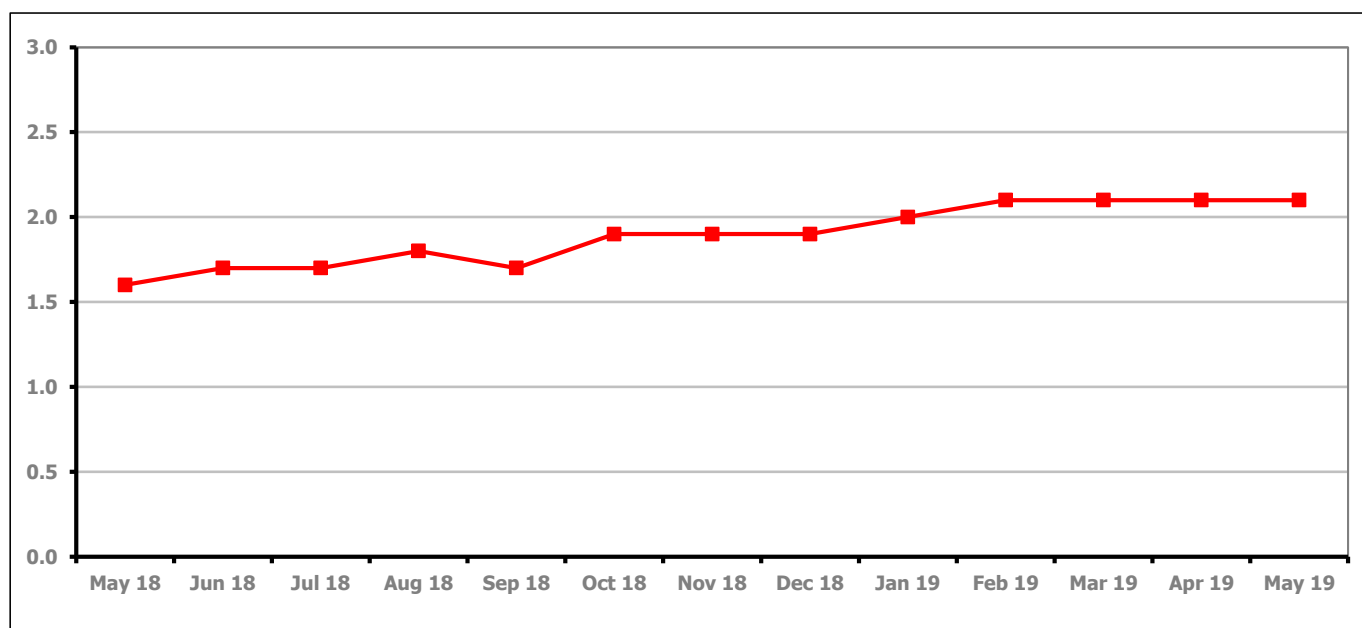


Figure 7 shows the claimant rate in the Forest of Dean stayed the same as last month at 2.1%.

Figure 8: Claimant rates across Forest of Dean District wards - May 2019

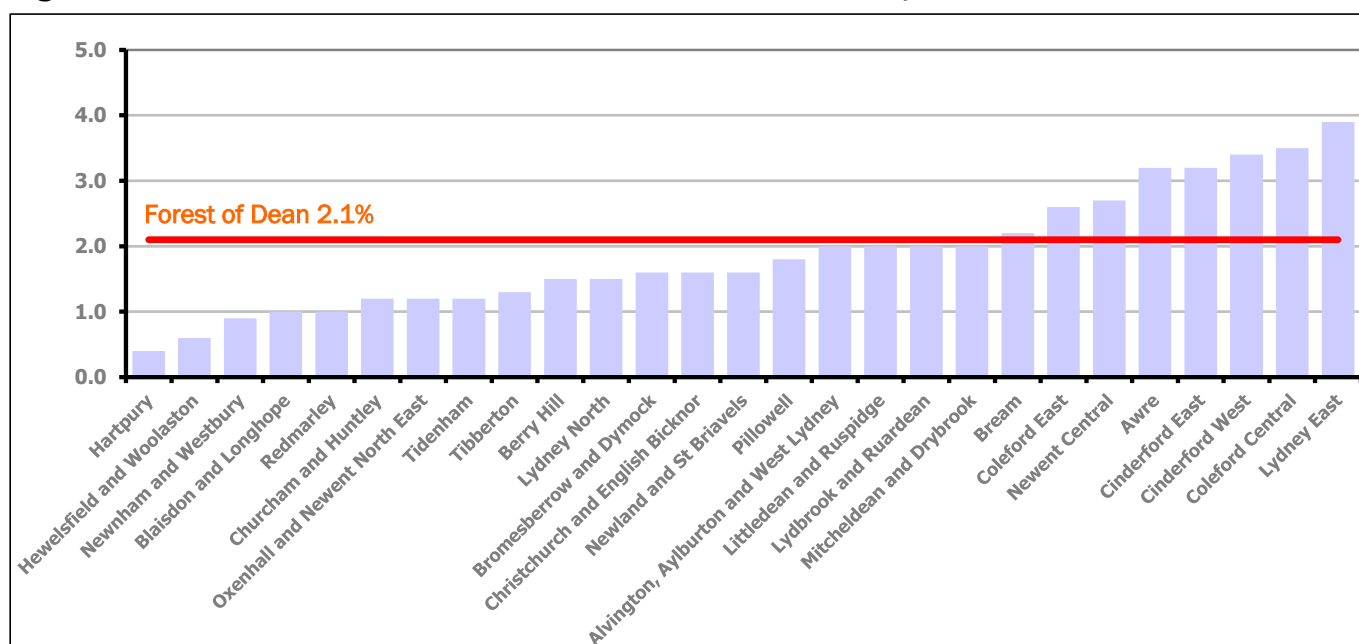


Figure 8 shows the claimant rates for the Forest of Dean District wards. The red line represents the average claimant rate across the District of 2.1%. Eight wards lie above the average.

PART 4: LOCAL AUTHORITY DISTRICT AND WARD ANALYSIS

4.3 Forest of Dean District continued...

Table 7: Analysis of Claimant Count at Forest of Dean District ward level - May 2019

District	Ward	Rate	Rank*
Forest	Hartpury	0.4	2
Forest	Hewelsfield and Woolaston	0.6	6
Forest	Newnham and Westbury	0.9	30
Forest	Blaisdon and Longhope	1.0	40
Forest	Redmarley	1.0	40
Forest	Churcham and Huntley	1.2	59
Forest	Oxenhall and Newent North East	1.2	59
Forest	Tidenham	1.2	59
Forest	Tibberton	1.3	69
Forest	Berry Hill	1.5	87
Forest	Lydney North	1.5	87
Forest	Bromesberrow and Dymock	1.6	93
Forest	Christchurch and English Bicknor	1.6	93
Forest	Newland and St Briavels	1.6	93
Forest	Pillowell	1.8	101
Forest	Alvington, Aylburton and West Lydney	2.0	109
Forest	Littledean and Ruspidge	2.0	109
Forest	Lydbrook and Ruardean	2.0	109
Forest	Mitcheldean and Drybrook	2.0	109
Forest	Bream	2.2	115
Forest	Coleford East	2.6	124
Forest	Newent Central	2.7	126
Forest	Awre	3.2	131
Forest	Cinderford East	3.2	131
Forest	Cinderford West	3.4	133
Forest	Coleford Central	3.5	134
Forest	Lydney East	3.9	139

	lowest 10% of county
	first quartile of county
	second quartile of county
	third quartile of county
	fourth quartile of county
	highest 10% of county

* 1 = "best" and 146 = "worst"

Table 7 shows overall claimant rates for the Forest of Dean District wards and their position relative to all wards in Gloucestershire.

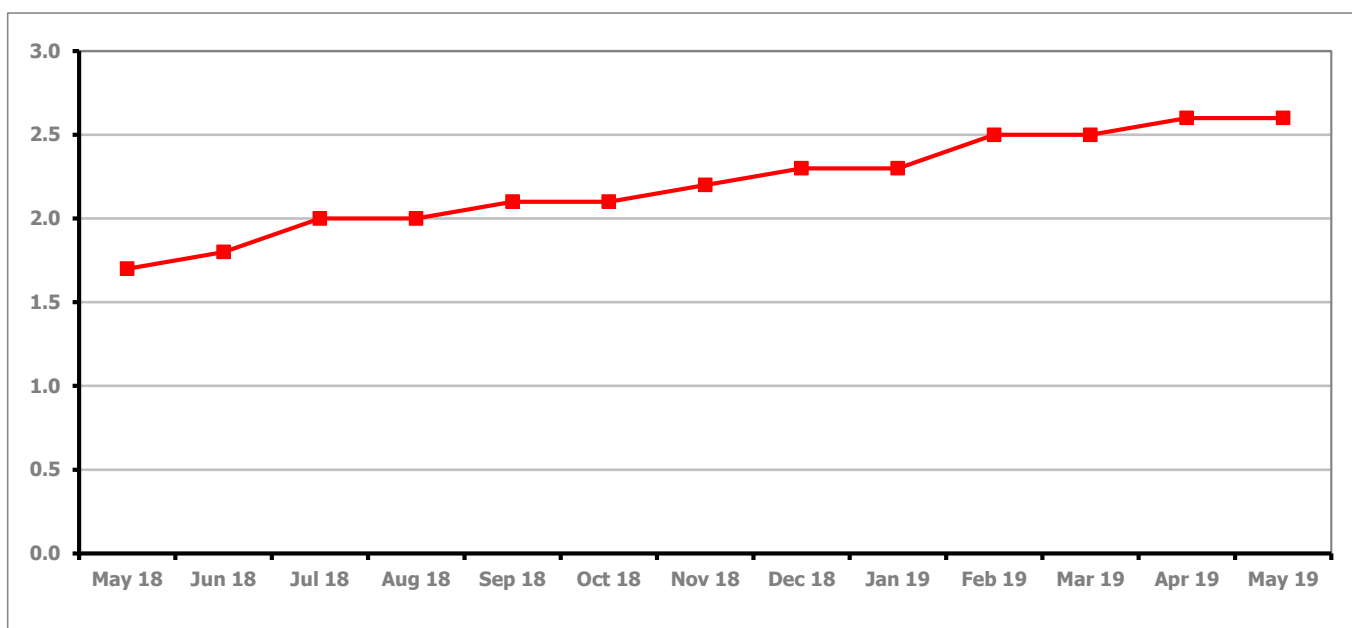
PART 4: LOCAL AUTHORITY DISTRICT AND WARD ANALYSIS**4.4 Gloucester City****Claimant Rate and Claimant Count***Figure 9: Gloucester City claimant rate over the last year*

Figure 9 shows the claimant rate for Gloucester City remained the same as last month at 2.6%.

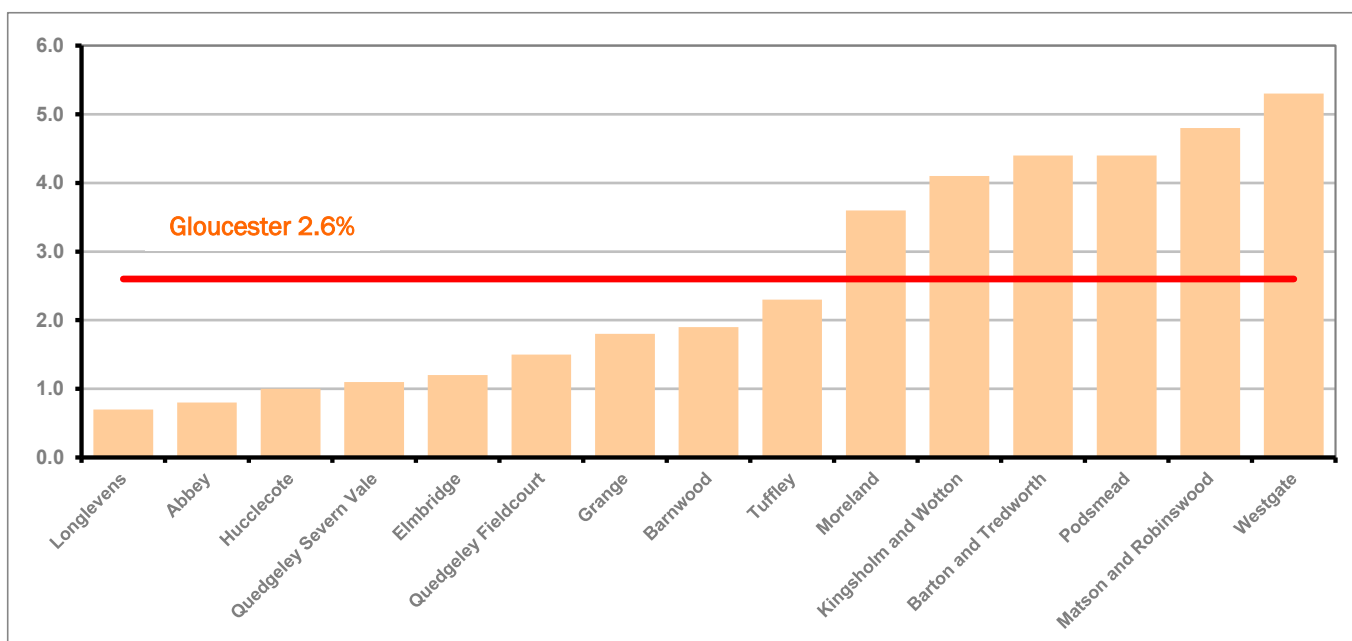
Figure 10: Claimant rates across Gloucester City wards - May 2019

Figure 10 shows the claimant rates for Gloucester City district wards. The red line represents the average claimant rate across the City of 2.6%. Six wards lie above the average.

PART 4: LOCAL AUTHORITY DISTRICT AND WARD ANALYSIS

4.4 Gloucester City continued...

Table 8: Analysis of Claimant Count at Gloucester City ward level - May 2019

District	Ward	Rate	Rank*
Gloucester	Longlevens	0.7	14
Gloucester	Abbey	0.8	21
Gloucester	Hucclecote	1.0	40
Gloucester	Quedgeley Severn Vale	1.1	47
Gloucester	Elmbridge	1.2	59
Gloucester	Quedgeley Fieldcourt	1.5	87
Gloucester	Grange	1.8	101
Gloucester	Barnwood	1.9	107
Gloucester	Tuffley	2.3	117
Gloucester	Moreland	3.6	136
Gloucester	Kingsholm and Wotton	4.1	140
Gloucester	Barton and Tredworth	4.4	143
Gloucester	Podsmead	4.4	143
Gloucester	Matson and Robinswood	4.8	145
Gloucester	Westgate	5.3	146

	lowest 10% of county
	first quartile of county
	second quartile of county
	third quartile of county
	fourth quartile of county
	highest 10% of county

* 1 = "best" and 146 = "worst"

Table 8 shows overall claimant rates for Gloucester City wards and their position relative to all wards in Gloucestershire.

PART 4: LOCAL AUTHORITY DISTRICT AND WARD ANALYSIS

4.5 Stroud District

Claimant Rate and Claimant Count

Figure 11: Stroud District claimant rate over the last year

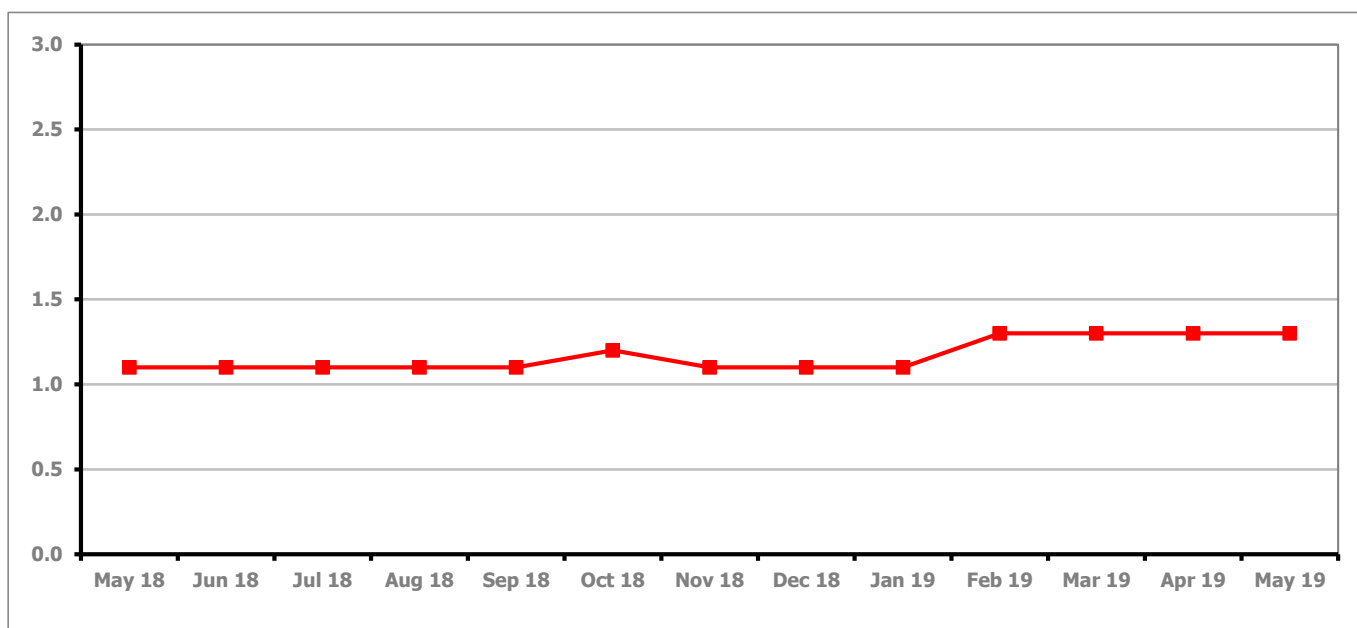


Figure 11 shows the claimant rate for Stroud remained the same as last month at 1.3%.

Figure 12: Claimant rates across Stroud District wards - May 2019

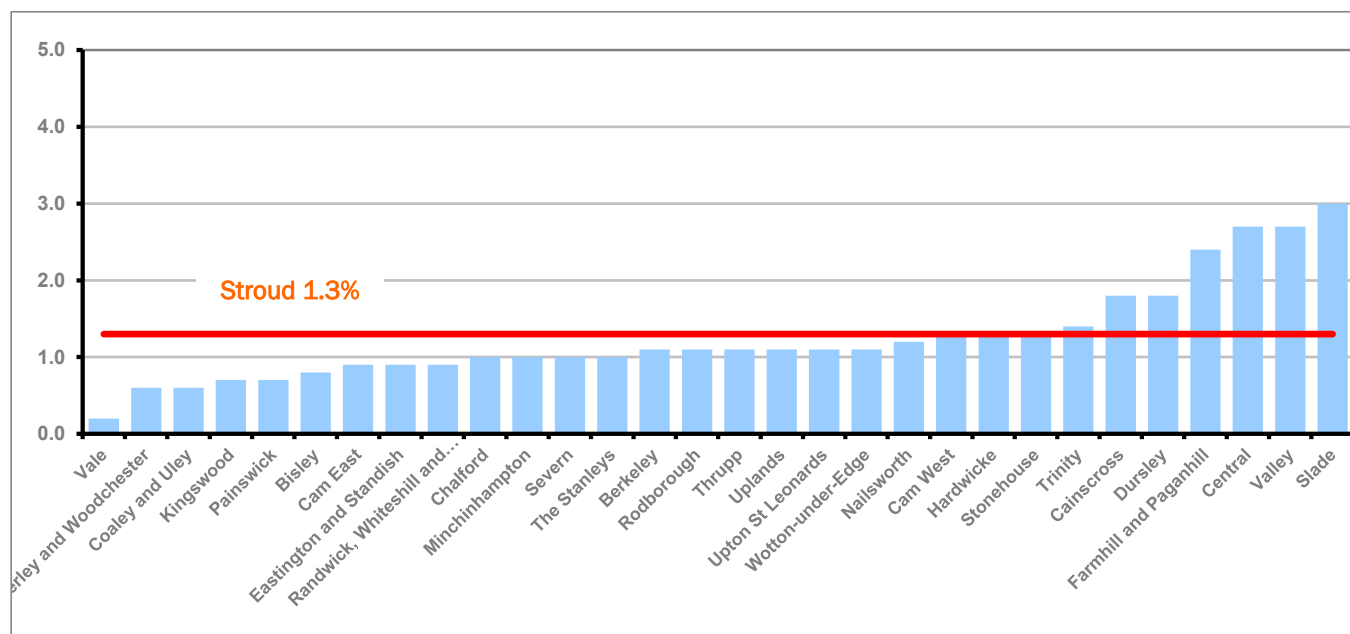


Figure 12 shows the claimant rates in Stroud District wards. The red line represents the average claimant rate across the District of 1.3%. Seven wards are above the average.

PART 4: LOCAL AUTHORITY AND DISTRICT ANALYSIS

4.5 Stroud District continued...

Table 9: Analysis of Claimant Count at Stroud District ward level - May 2019

District	Ward	Rate	Rank*
Stroud	Vale	0.2	1
Stroud	Amberley and Woodchester	0.6	6
Stroud	Coaley and Uley	0.6	6
Stroud	Kingswood	0.7	14
Stroud	Painswick	0.7	14
Stroud	Bisley	0.8	21
Stroud	Cam East	0.9	30
Stroud	Eastington and Standish	0.9	30
Stroud	Randwick, Whiteshill and Ruscombe	0.9	30
Stroud	Chalford	1.0	40
Stroud	Minchinhampton	1.0	40
Stroud	Severn	1.0	40
Stroud	The Stanleys	1.0	40
Stroud	Berkeley	1.1	47
Stroud	Rodborough	1.1	47
Stroud	Thrupp	1.1	47
Stroud	Uplands	1.1	47
Stroud	Upton St Leonards	1.1	47
Stroud	Wotton-under-Edge	1.1	47
Stroud	Nailsworth	1.2	59
Stroud	Cam West	1.3	69
Stroud	Hardwicke	1.3	69
Stroud	Stonehouse	1.3	69
Stroud	Trinity	1.4	80
Stroud	Cainscross	1.8	101
Stroud	Dursley	1.8	101
Stroud	Farmhill and Paganhill	2.4	121
Stroud	Central	2.7	126
Stroud	Valley	2.7	126
Stroud	Slade	3.0	130

	lowest 10% of county
	first quartile of county
	second quartile of county
	third quartile of county
	fourth quartile of county
	highest 10% of county

* 1 = "best" and 146 = "worst"

Table 9 shows overall claimant rates for Stroud District wards and their position relative to all wards in Gloucestershire.

PART 4: LOCAL AUTHORITY DISTRICT AND WARD ANALYSIS

4.6 Tewkesbury Borough

Claimant Rate and Claimant Count

Figure 13: Tewkesbury Borough claimant rate over the last year

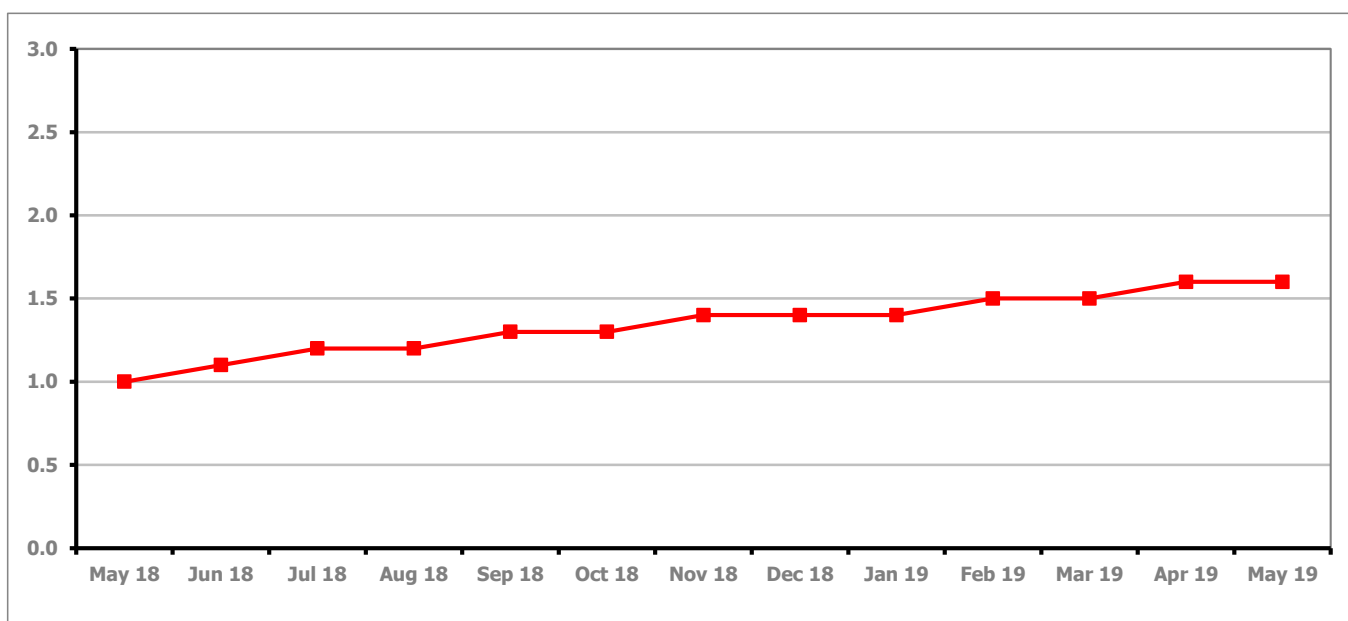


Figure 13 shows the claimant rate for Tewkesbury Borough remained the same as last month at 1.6%.

Figure 14: Claimant rates across Tewkesbury Borough wards - May 2019

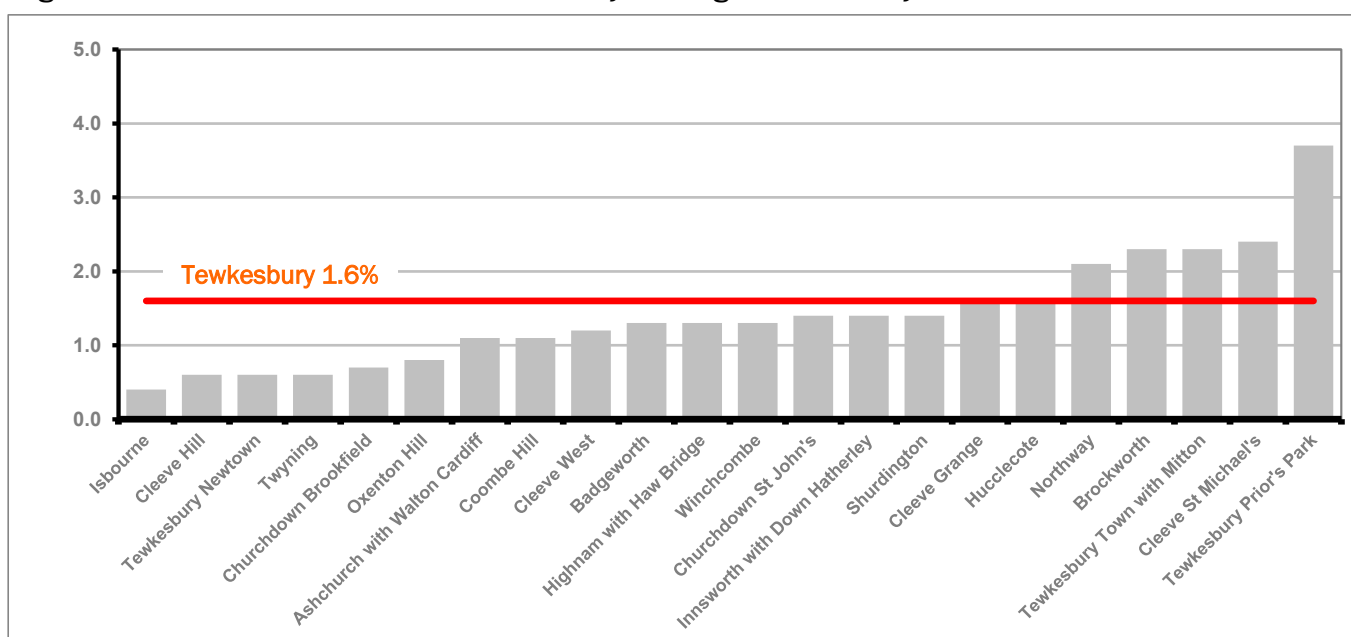


Figure 14 shows the claimant rates in Tewkesbury Borough wards. The red line represents the average claimant rate across the District of 1.6%. Five wards are above the average.

PART 4: LOCAL AUTHORITY AND DISTRICT ANALYSIS

4.6 Tewkesbury Borough continued...

Table 10: Analysis of Claimant Count at Tewkesbury Borough level - May 2019

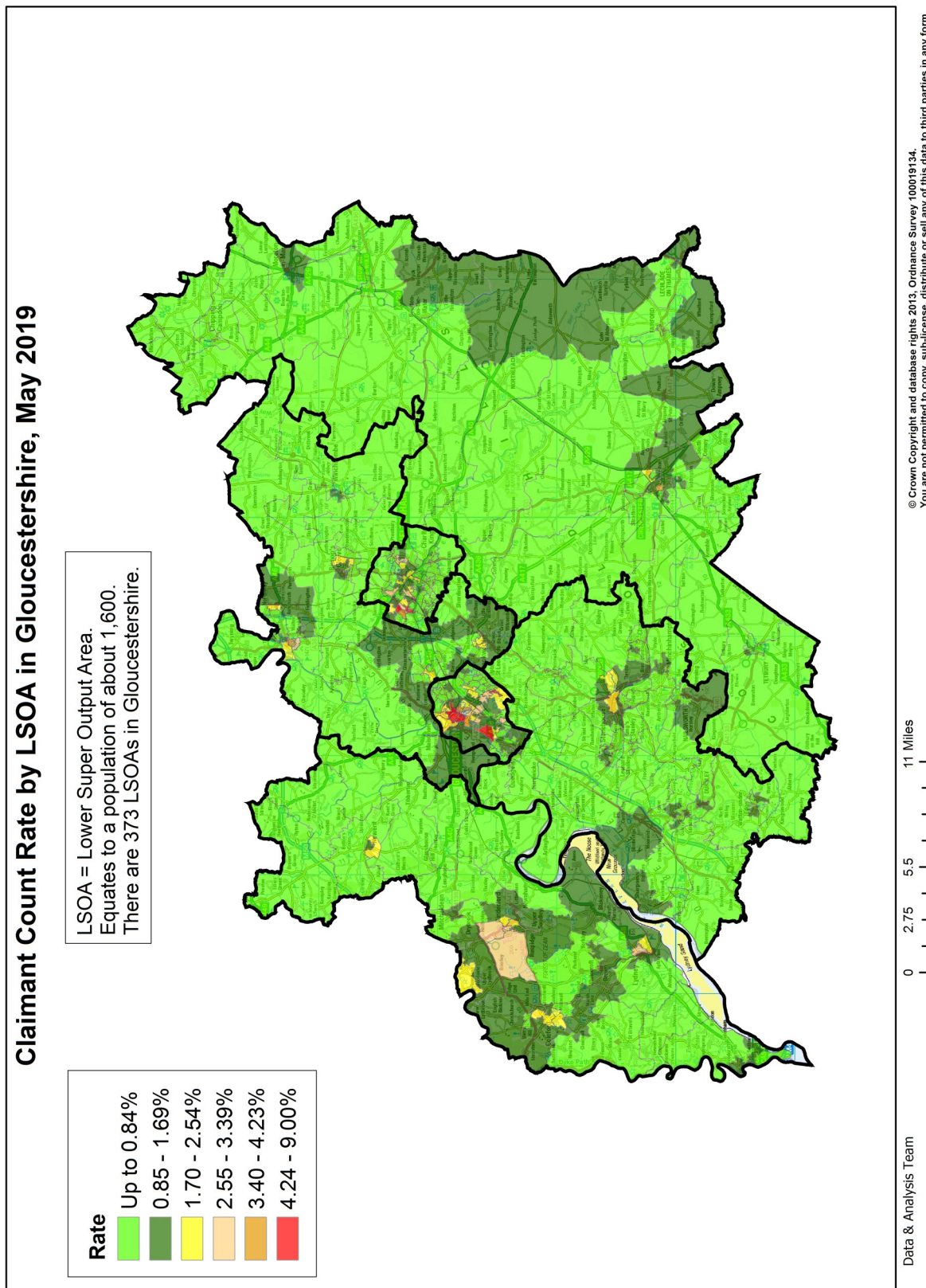
District	Ward	Rate	Rank*
Tewkesbury	Isbourne	0.4	2
Tewkesbury	Cleeve Hill	0.6	6
Tewkesbury	Tewkesbury Newtown	0.6	6
Tewkesbury	Twynning	0.6	6
Tewkesbury	Churchdown Brookfield	0.7	14
Tewkesbury	Oxenton Hill	0.8	21
Tewkesbury	Ashchurch with Walton Cardiff	1.1	47
Tewkesbury	Coombe Hill	1.1	47
Tewkesbury	Cleeve West	1.2	59
Tewkesbury	Badgeworth	1.3	69
Tewkesbury	Highnam with Haw Bridge	1.3	69
Tewkesbury	Winchcombe	1.3	69
Tewkesbury	Churchdown St John's	1.4	80
Tewkesbury	Innsworth with Down Hatherley	1.4	80
Tewkesbury	Shurdington	1.4	80
Tewkesbury	Cleeve Grange	1.6	93
Tewkesbury	Hucclecote	1.6	93
Tewkesbury	Northway	2.1	114
Tewkesbury	Brockworth	2.3	117
Tewkesbury	Tewkesbury Town with Mitton	2.3	117
Tewkesbury	Cleeve St Michael's	2.4	121
Tewkesbury	Tewkesbury Prior's Park	3.7	137

	lowest 10% of county
	first quartile of county
	second quartile of county
	third quartile of county
	fourth quartile of county
	highest 10% of county

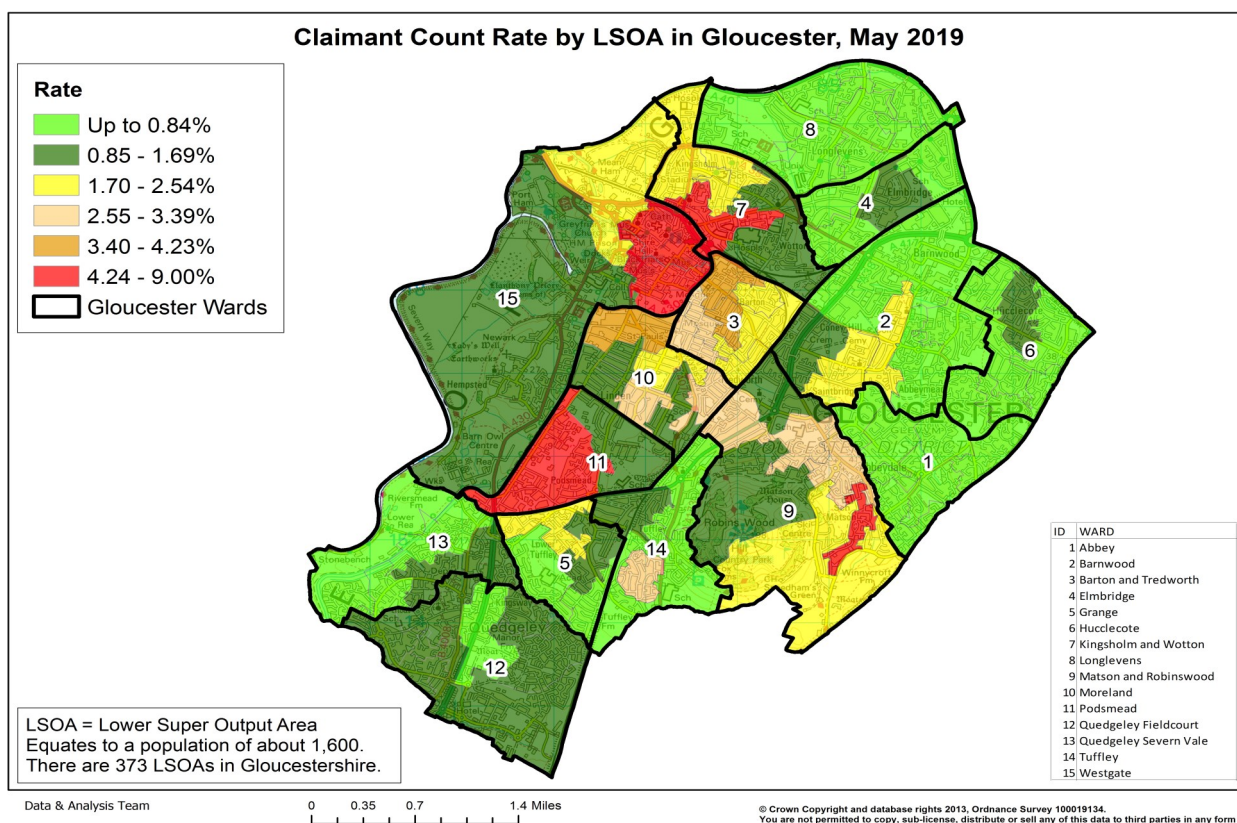
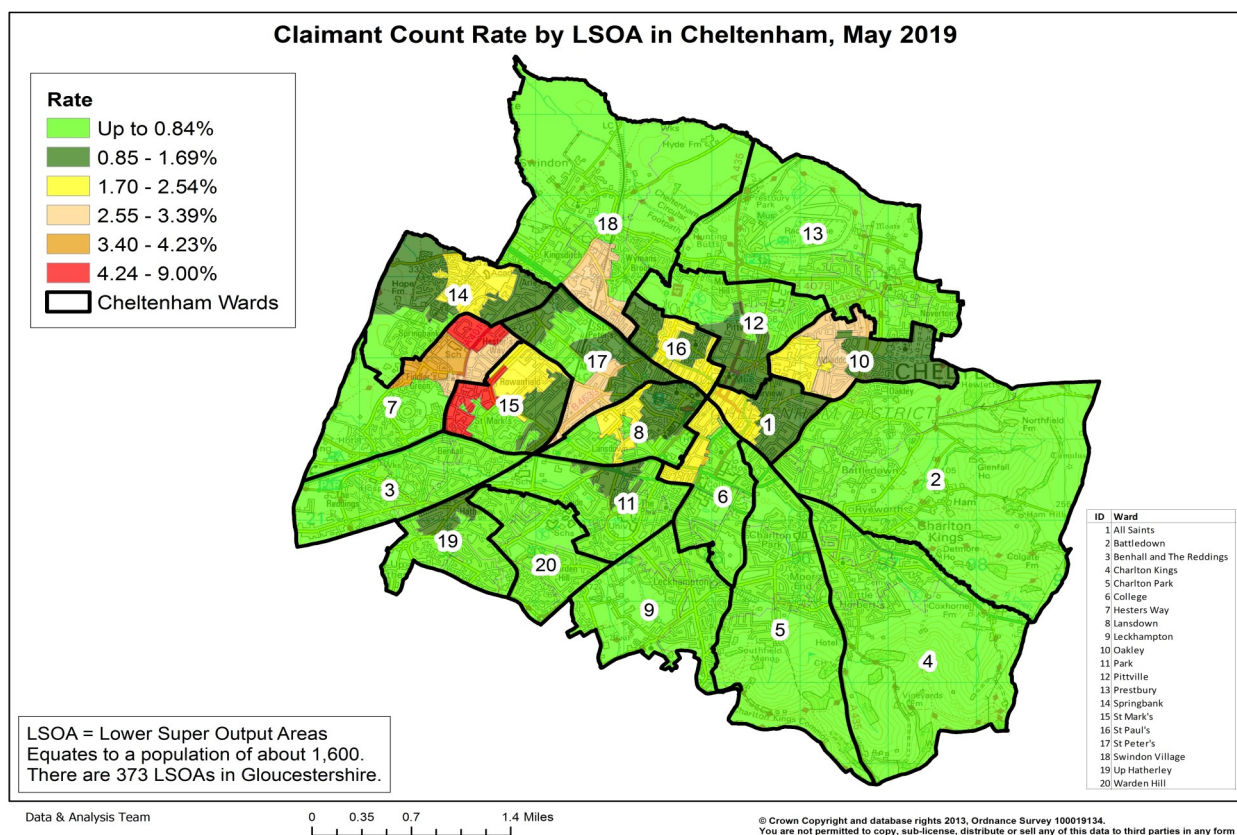
* 1 = "best" and 146 = "worst"

Table 10 shows overall claimant rates for Tewkesbury Borough wards and their position relative to all wards in Gloucestershire.

PART 5: MAP SHOWING DISTRIBUTION OF CLAIMANT RATE ACROSS GLOUCESTERSHIRE



PART 5: MAP SHOWING DISTRIBUTION OF CLAIMANT RATE ACROSS GLOUCESTERSHIRE



PART 6: YOUTH UNEMPLOYMENT(18-24 year olds)

Youth Claimant Rate and Claimant Count

Figure 15: Claimant Count for Gloucestershire over the past year

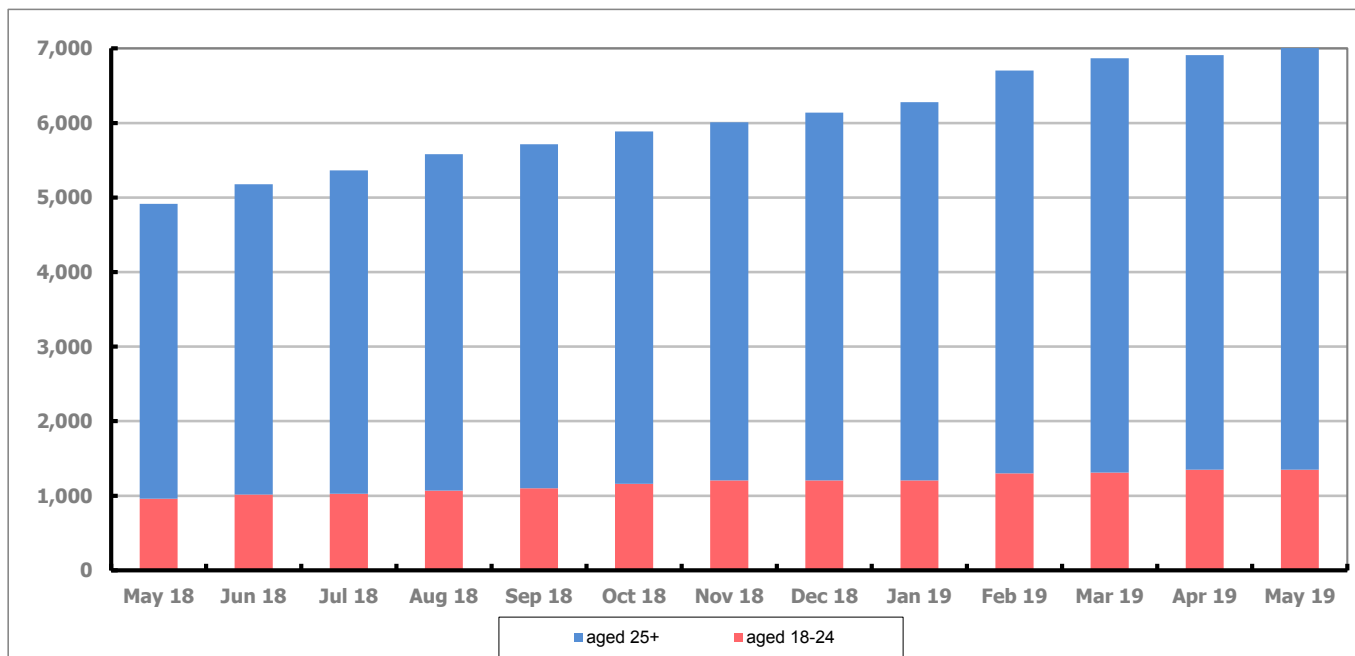


Figure 15 shows that in May 2019, 1,350 people aged 18-24 were claiming Job Seekers Allowance and Universal Credit who were not in work in Gloucestershire, this represents 19.2% of total working age claimants.

PART 7: YOUNG PEOPLE NOT IN EDUCATION, EMPLOYMENT OR TRAINING (NEET) IN GLOUCESTERSHIRE

Data provided by Gloucestershire Youth Support Team on the situation of young people (16-18) in Gloucestershire who are not in education, employment or formal training.

Gloucestershire Youth Support Team is required to report performance with the 16-18 age range against nationally defined criteria for counting the NEET group. The NEET group includes young people actively seeking education, employment or training as well as those young people who are either not yet ready or who are unable to access these opportunities because of their personal circumstances. The figures quoted below include young people in both of these categories.

Summary

At the end of May 2019 there were 343 young people aged 16-18 not in education, employment or training in Gloucestershire and this figure translates into an adjusted (*) 16-18 NEET population of 2.54%. The total number of NEET young people decreased by 7 in May 2019 compared to April 2019, four districts saw a decrease in their figures and two districts saw an increase in their figures.

Total NEET Group by District Area

May 2019 NEET data

	Cheltenham	Cotswold	Forest	Gloucester	Stroud	Tewkesbury	Total
Total NEET	74	26	44	110	47	42	343
Cohort	2392	1907	1860	3374	2856	1985	14375
% NEET	3.09	1.36	2.37	3.26	1.65	2.12	2.54

If you would like to receive any further information on Gloucestershire's NEET strategy then please contact Lynne.Speak@Prospects.co.uk or telephone 07900 391182.

(*) Adjustment includes a proportion of young people aged 16-18 whose outcomes are not known to Gloucestershire Youth Support Team.