

# Unemployment Bulletin

Issue 135 October 2019

## Contents

<b>Part 1: Summary</b> A summary of unemployment data at district, County, regional and national level	<b>1</b>
<b>Part 2: County</b> Unemployment figures for the County compared to the South West and the rest of the UK	<b>3</b>
<b>Part 3: Districts</b> A comparative break down of unemployment figures by district	<b>4</b>
<b>Part 4: Wards</b> Further breakdown of unemployment figures by ward:	
Cheltenham	6
Cotswolds	8
Forest of Dean	10
Gloucester	12
Stroud	14
Tewkesbury	16
<b>Part 5: Map</b> Distribution of claimant rate across Gloucestershire	<b>18</b>
<b>Part 6: Youth Unemployment</b> Unemployment data for the 18-24 year old age group	<b>20</b>
<b>Part 7: Young People</b> Data about Young People Not in Education, Employment or Training (NEET)	<b>21</b>

The Claimant Count is a measure of the number of people who are unemployed and claiming benefits. From 1996 until the recent introduction of Universal Credit, this was based on the number of people claiming Jobseeker's Allowance. However, since its introduction some unemployment benefit claimants will be claiming Universal Credit instead. **To reflect this change, the Claimant Count has been expanded to include people claiming Jobseeker's Allowance plus those who claim Universal Credit and who are searching for work.**

Gloucestershire is in the process of transitioning to full Universal Credit. This means a broader span of claimants will be required to look for work than previously under Jobseekers Allowance. As more people are brought within the coverage of Universal Credit, the Claimant Count is set to rise noticeably over time. This will happen irrespective of how the economy performs and is a feature of the design of Universal Credit which brings additional groups of people into 'Searching for Work' conditionality (and therefore the Claimant Count), to help encourage and support these claimants into work.

For more information about Universal Credit please see the [ONS website](https://www.ons.gov.uk/universal-credit).

## INTRODUCTION

The Unemployment Bulletin provides a monthly update on unemployment data for Gloucestershire, the South West region and the United Kingdom. It is produced by the Data & Analysis Team in the County Council's Planning, Performance and Change function. The data are sourced from the Office for National Statistics via Nomis ([www.nomis.co.uk](http://www.nomis.co.uk)). All data are rounded to the nearest 5 and may not precisely add to the sum of the number of people claiming JSA, and the number of people claiming Universal Credit required to seek work, due to independent rounding.

## PART 1: SUMMARY

The claimant rate in Gloucestershire was **1.9% in October 2019**. The South West and UK rates both increased to 2.1% and 2.9% respectively. Gloucestershire's rate was 0.2% lower than the South West average of 2.1%, and 1.0% lower than the UK average of 2.9%.

The claimant count in Gloucestershire in October 2019 increased by **220 people**. The amount of people claiming in October 2019 was 3.1% higher than the number in September 2019. This compares to a 3.0% increase in the South West and a 2.5% increase for the UK.

Produced by:

**Data & Analysis Team**  
Planning, Performance and Change  
Gloucestershire County Council  
November 2019

## DISTRICTS AT A GLANCE

At a glance unemployment information grouped by district. Includes:

**Claim count:** Total number of people claiming Job Seekers Allowance and Universal Credit who are not in work in October 2019

**Compared to last month:** How much larger/smaller October's claimant count is compared to September expressed as a %

**Claimant rate:** The % of working age population claiming Job Seekers Allowance and Universal Credit who are not in work in October 2019

**Highest claiming ward:** The ward with the highest claim count in that district and the rate

### CHELTEMHAM BOROUGH

Claim count:	1,480
Compared to last month:	5.0%
Claimant rate:	2.0%
Highest claiming ward	Oakley (4.3%)

### GLOUCESTER CITY

Claim count:	2,250
Compared to last month:	1.4%
Claimant rate:	2.8%
Highest claiming wards	Westgate (5.4%)

### COTSWOLD DISTRICT

Claim count:	700
Compared to last month:	3.7%
Claimant rate:	1.4%
Highest claiming ward	Watermoor (3.8%)

### STROUD DISTRICT

Claim count:	1,020
Compared to last month:	4.1%
Claimant rate:	1.4%
Highest claiming wards	Slade (3.9%)

### FOREST OF DEAN

Claim count:	1,095
Compared to last month:	1.9%
Claimant rate:	2.1%
Highest claiming ward	Lydney East (4.3%)

### TEWKESBURY BOROUGH

Claim count:	885
Compared to last month:	3.5%
Claimant rate:	1.6%
Highest claiming ward	Tewkesbury Prior's Park (3.6%)

## PART 2: UK, SW AND GLOUCESTERSHIRE INDICATORS

The unemployment situation in Gloucestershire compared to the South West and the UK.

### Claimant Rate

Figure 1: Claimant Rate for Gloucestershire, the South West and UK over the past year

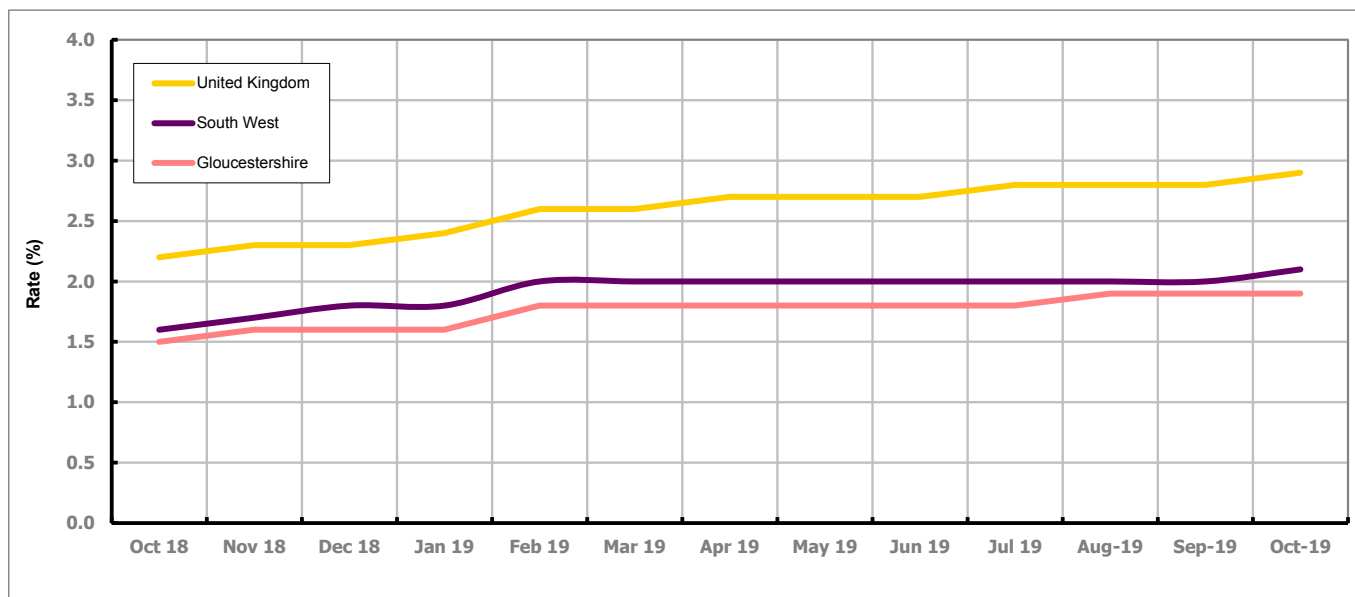


Figure 1 shows the claimant rate for Gloucestershire at 1.9% in October 2019. The Gloucestershire rate has been lower than the South West average since December 2015, with the exception of April and May 2016 when it was the same. It has been persistently lower by approximately 0.8% against the UK average.

### Claimant Count

Table 1: Analysis of UK, South West and Gloucestershire Claimant Counts

Area	Claimant Count in October 2019	% change on September 2019	Consecutive months increasing
UK	1,194,310	2.5%	15
South West	70,435	3.0%	0
Gloucestershire	7,430	3.1%	0

Table 1 shows that in October 2019, the number of claimants in Gloucestershire was 3.1% higher than the number in September 2019.

## PART 3: LOCAL AUTHORITY DISTRICT ANALYSIS

### Claimant Rate and Claimant Count

Figure 2: Claimant Rate (%) across Gloucestershire - October 2019

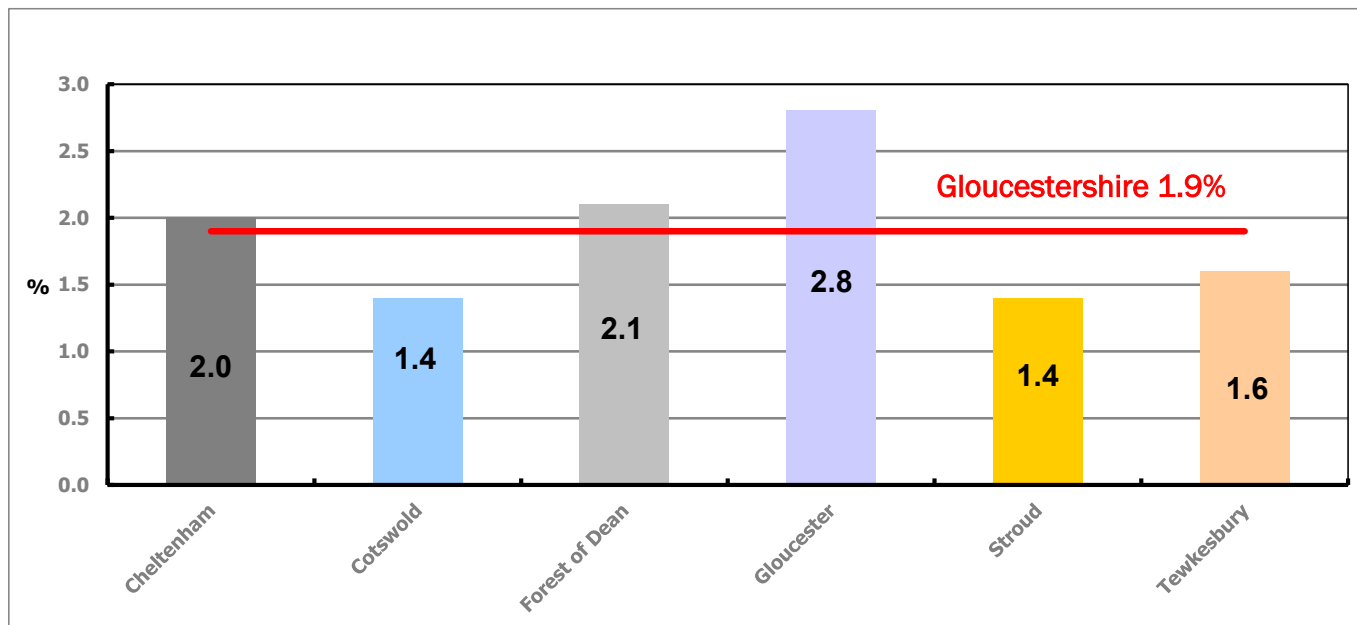


Figure 2 shows the claimant rate for October 2019 in Gloucestershire. Between September 2019 and October 2019 the rate increased in Cheltenham, Cotswold and Gloucester. All other districts stayed the same.

Table 2: Analysis of Gloucestershire and District Claimant Counts

Total	Oct 19 Number	Oct 19 Rate	Sep 19 Number	Sep 19 Rate	Monthly change	% monthly change	Monthly change of rate
<b>Gloucestershire</b>	7,430	1.9	7,210	1.9	220	3.1%	0.0
Cheltenham	1,480	2.0	1,410	1.9	70	5.0%	0.1
Cotswold	700	1.4	675	1.3	25	3.7%	0.1
Forest of Dean	1,095	2.1	1,075	2.1	20	1.9%	0.0
Gloucester	2,250	2.8	2,220	2.7	30	1.4%	0.1
Stroud	1,020	1.4	980	1.4	40	4.1%	0.0
Tewkesbury	885	1.6	855	1.6	30	3.5%	0.0

Table 2 shows the change in the claimant count in October 2019 compared to September 2019. All districts saw an increase in the number of claimants.

Table 3: Analysis of Male Gloucestershire and District Claimant Counts

Male	Oct 19 Number	Oct 19 Rate	Sep 19 Number	Sep 19 Rate	Monthly change	% monthly change	Monthly change of rate
<b>Gloucestershire</b>	4,215	2.2	4,130	2.2	85	2.1%	0.0
Cheltenham	880	2.4	855	2.3	25	2.9%	0.1
Cotswold	370	1.5	360	1.4	10	2.8%	0.1
Forest of Dean	595	2.3	595	2.4	0	0.0%	-0.1
Gloucester	1,345	3.3	1,315	3.2	30	2.3%	0.1
Stroud	550	1.6	540	1.5	10	1.9%	0.1
Tewkesbury	480	1.8	460	1.7	20	4.3%	0.1

Table 3 shows the change in the male claimant count in October 2019 compared to September 2019. All districts saw an increase in the number of male claimants, except the Forest of Dean which saw no change.

Table 4: Analysis of Female Gloucestershire and District Claimant Counts

Female	Oct 19 Number	Oct 19 Rate	Sep 19 Number	Sep 19 Rate	Monthly change	% monthly change	Monthly change of rate
<b>Gloucestershire</b>	3,210	1.7	3,085	1.6	125	4.1%	0.1
Cheltenham	605	1.6	550	1.5	55	10.0%	0.1
Cotswold	330	1.3	315	1.2	15	4.8%	0.1
Forest of Dean	500	1.9	475	1.8	25	5.3%	0.1
Gloucester	905	2.2	905	2.2	0	0.0%	0.0
Stroud	470	1.3	435	1.2	35	8.0%	0.1
Tewkesbury	405	1.5	395	1.4	10	2.5%	0.1

Table 4 shows the change in the female claimant count in October 2019 compared to September 2019. All districts saw an increase in the number of female claimants, except Gloucester which saw no change.

## PART 4: LOCAL AUTHORITY DISTRICT AND WARD ANALYSIS

This section covers the six districts and a comparison of their constituent wards.

### 4.1 Cheltenham Borough

#### Claimant Rate and Claimant Count

Figure 3: Cheltenham Borough claimant rate over the last year

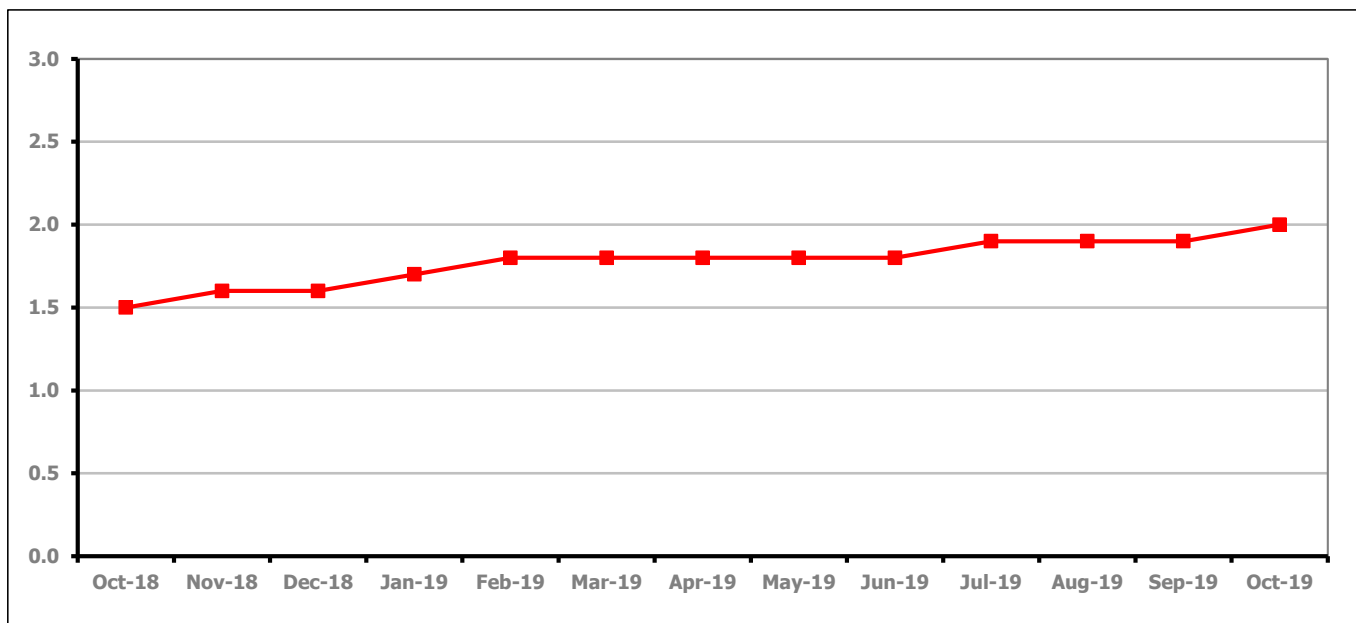


Figure 3 shows the claimant rate in Cheltenham increased in October 2019 to 2.0%.

Figure 4: Claimant rates across Cheltenham Borough wards - October 2019

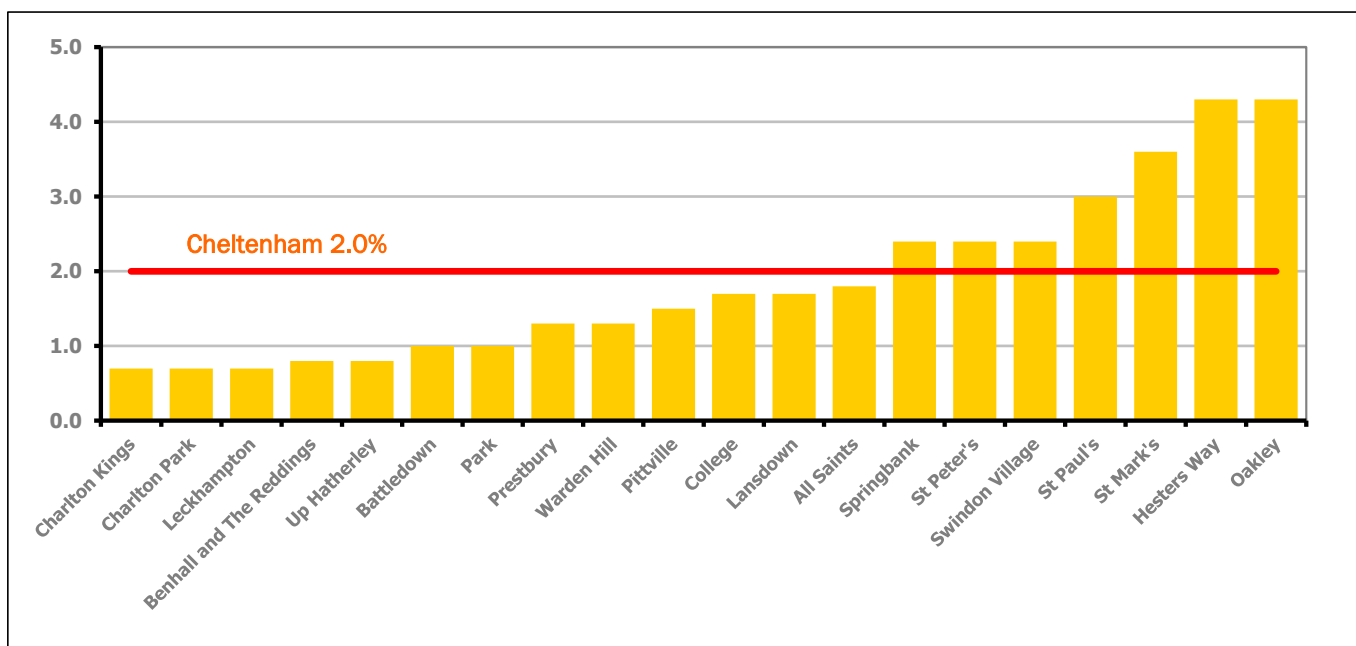


Figure 4 shows the claimant rates for Cheltenham Borough wards. The red line represents the average claimant rate across the Borough of 2.0%. Seven wards lie above the average.

## PART 4: LOCAL AUTHORITY DISTRICT AND WARD ANALYSIS

### 4.1 Cheltenham Borough continued...

Table 5: Analysis of Claimant Count at Cheltenham Borough ward level - October 2019

District	Ward	Rate	Rank*
Cheltenham	Charlton Kings	0.7	6
Cheltenham	Charlton Park	0.7	6
Cheltenham	Leckhampton	0.7	6
Cheltenham	Benhall and The Reddings	0.8	16
Cheltenham	Up Hatherley	0.8	16
Cheltenham	Battledown	1.0	33
Cheltenham	Park	1.0	33
Cheltenham	Prestbury	1.3	57
Cheltenham	Warden Hill	1.3	57
Cheltenham	Pittville	1.5	77
Cheltenham	College	1.7	90
Cheltenham	Lansdown	1.7	90
Cheltenham	All Saints	1.8	95
Cheltenham	Springbank	2.4	119
Cheltenham	St Peter's	2.4	119
Cheltenham	Swindon Village	2.4	119
Cheltenham	St Paul's	3.0	129
Cheltenham	St Mark's	3.6	132
Cheltenham	Hesters Way	4.3	141
Cheltenham	Oakley	4.3	141

	lowest 10% of county
	first quartile of county
	second quartile of county
	third quartile of county
	fourth quartile of county
	highest 10% of county

\* 1 = "best" and 146 = "worst"

Table 5 shows overall claimant rates for Cheltenham Borough wards and their position relative to all wards in Gloucestershire.

## PART 4: LOCAL AUTHORITY DISTRICT AND WARD ANALYSIS

### 4.2 Cotswold District

#### Claimant Rate and Claimant Count

Figure 5: Cotswold District claimant rate over the last year

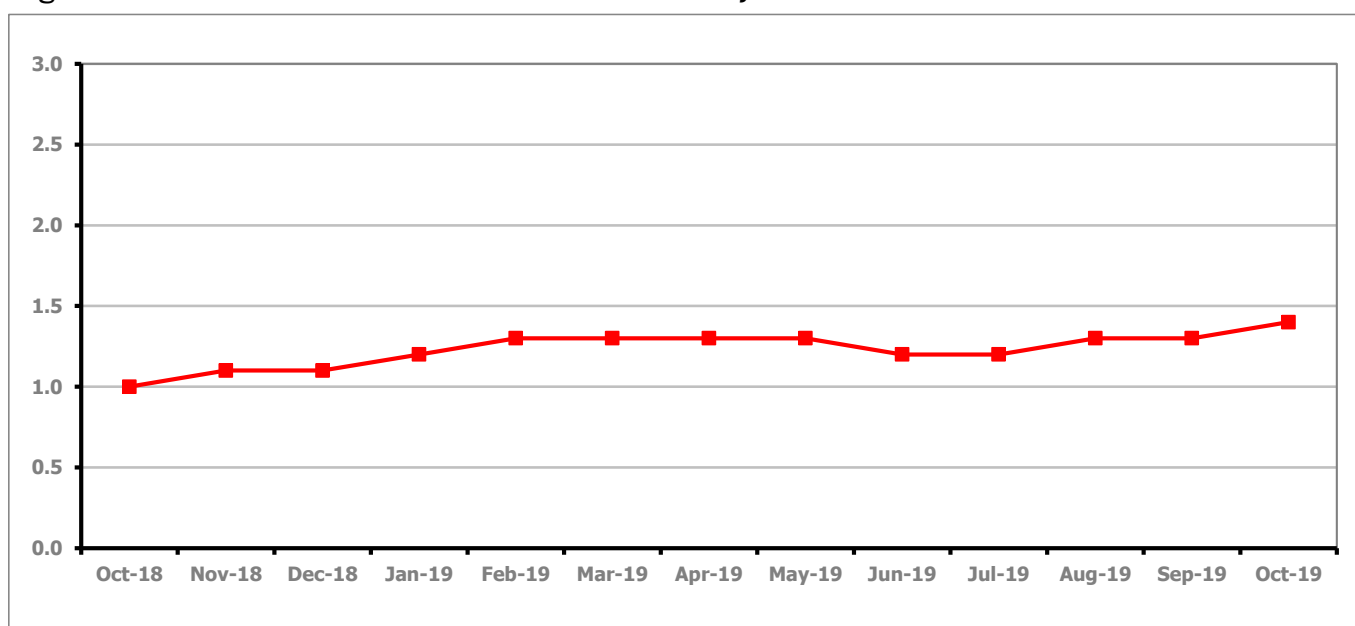


Figure 5 shows the claimant rate in Cotswold District increased in October 2019 to 1.4%.

Figure 6: Claimant rates across Cotswold District wards - October 2019

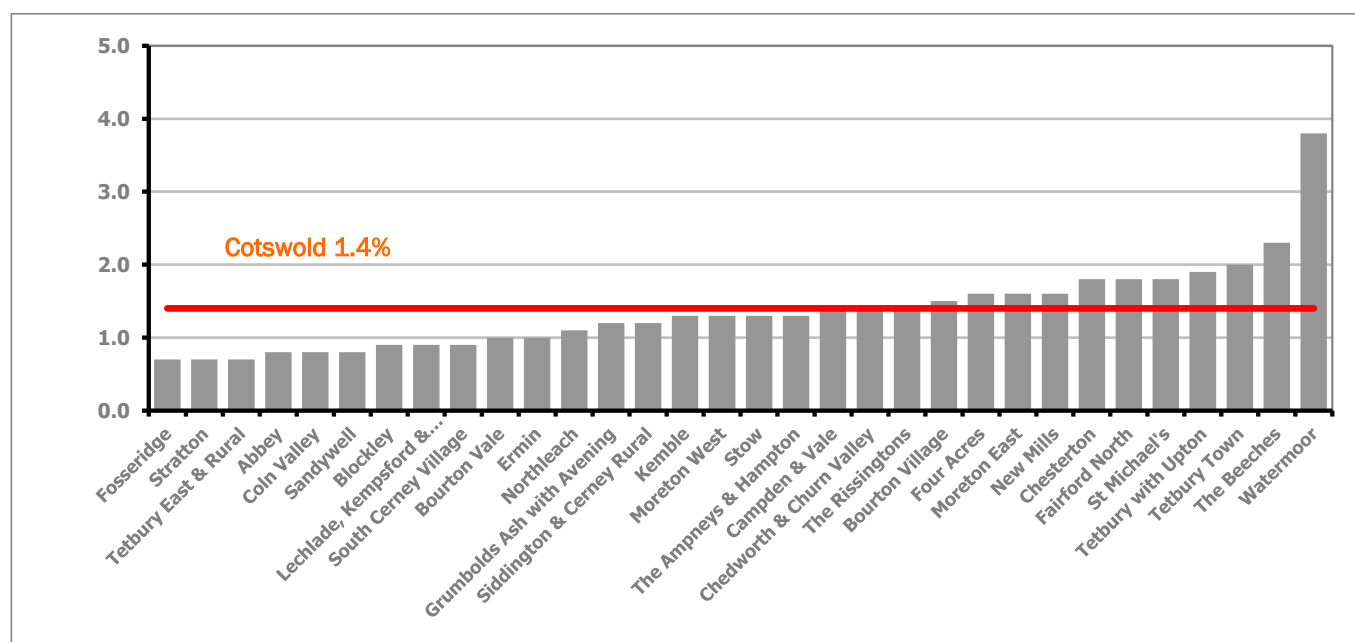


Figure 6 shows the claimant rates for Cotswold District wards. The red line represents the average claimant rate across the District of 1.4%. Eleven wards lie above the average.

## PART 4: LOCAL AUTHORITY DISTRICT AND WARD ANALYSIS

### 4.2 Cotswold District continued...

Table 6: Analysis of Claimant Count at Cotswold District ward level - October 2019

District	Ward	Rate	Rank*
Cotswolds	Fosseridge	0.7	6
Cotswolds	Stratton	0.7	6
Cotswolds	Tetbury East & Rural	0.7	6
Cotswolds	Abbey	0.8	16
Cotswolds	Coln Valley	0.8	16
Cotswolds	Sandywell	0.8	16
Cotswolds	Blockley	0.9	25
Cotswolds	Lechlade, Kempsford & Fairford South	0.9	25
Cotswolds	South Cerney Village	0.9	25
Cotswolds	Bourton Vale	1.0	33
Cotswolds	Ermin	1.0	33
Cotswolds	Northleach	1.1	45
Cotswolds	Grumbolds Ash with Avening	1.2	50
Cotswolds	Siddington & Cerney Rural	1.2	50
Cotswolds	Kemble	1.3	57
Cotswolds	Moreton West	1.3	57
Cotswolds	Stow	1.3	57
Cotswolds	The Ampneys & Hampton	1.3	57
Cotswolds	Campden & Vale	1.4	68
Cotswolds	Chedworth & Churn Valley	1.4	68
Cotswolds	The Rissingtons	1.4	68
Cotswolds	Bourton Village	1.5	77
Cotswolds	Four Acres	1.6	83
Cotswolds	Moreton East	1.6	83
Cotswolds	New Mills	1.6	83
Cotswolds	Chesterton	1.8	95
Cotswolds	Fairford North	1.8	95
Cotswolds	St Michael's	1.8	95
Cotswolds	Tetbury with Upton	1.9	103
Cotswolds	Tetbury Town	2.0	108
Cotswolds	The Beeches	2.3	117
Cotswolds	Watermoor	3.8	137

	lowest 10% of county
	first quartile of county
	second quartile of county
	third quartile of county
	fourth quartile of county
	highest 10% of county

\* 1 = "best" and 146 = "worst"

Table 6 shows overall claimant rates for Cotswold District wards and their position relative to all wards in Gloucestershire.

## PART 4: LOCAL AUTHORITY DISTRICT AND WARD ANALYSIS

### 4.3 Forest of Dean District

#### Claimant Rate and Claimant Count

Figure 7: Forest of Dean District claimant rate over the last year

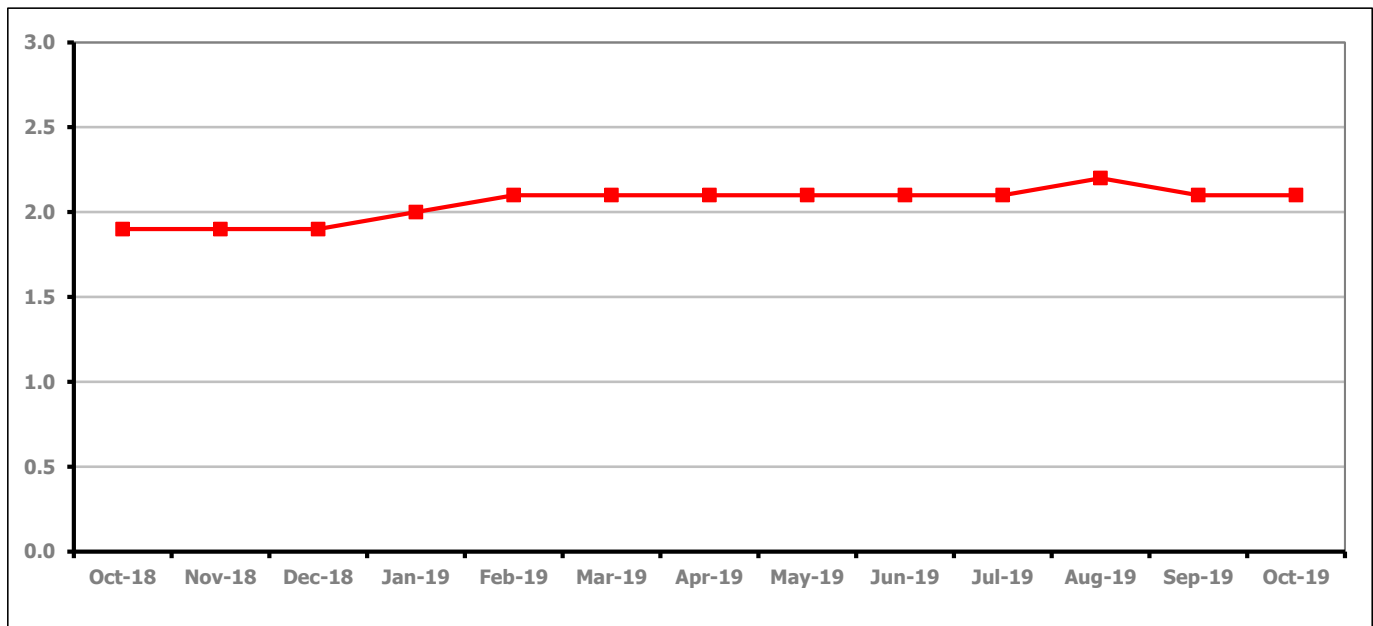


Figure 7 shows the claimant rate in the Forest of Dean stayed the same as last month at 2.1%.

Figure 8: Claimant rates across Forest of Dean District wards - October 2019

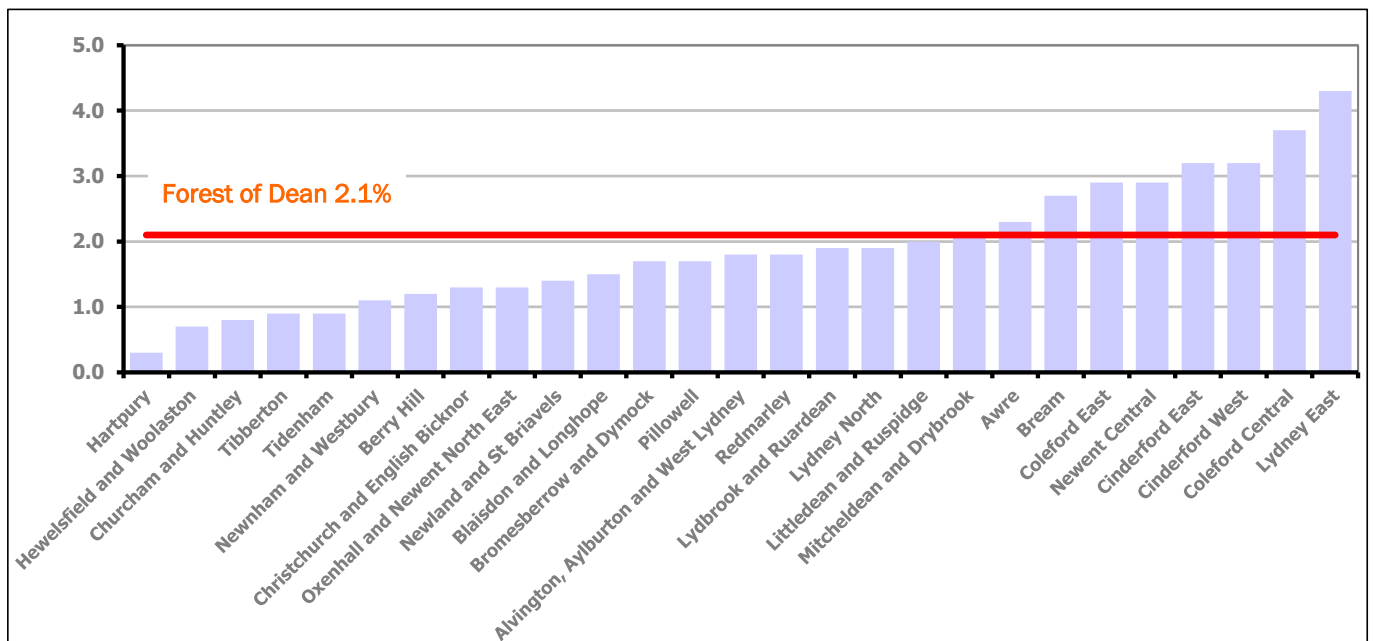


Figure 8 shows the claimant rates for the Forest of Dean District wards. The red line represents the average claimant rate across the District of 2.1%. Eight wards lie above the average.

## PART 4: LOCAL AUTHORITY DISTRICT AND WARD ANALYSIS

### 4.3 Forest of Dean District continued...

Table 7: Analysis of Claimant Count at Forest of Dean District ward level - October 2019

District	Ward	Rate	Rank*
Forest	Hartpury	0.3	1
Forest	Hewelsfield and Woolaston	0.7	6
Forest	Churcham and Huntley	0.8	16
Forest	Tibberton	0.9	25
Forest	Tidenham	0.9	25
Forest	Newnham and Westbury	1.1	45
Forest	Berry Hill	1.2	50
Forest	Christchurch and English Bicknor	1.3	57
Forest	Oxenhall and Newent North East	1.3	57
Forest	Newland and St Briavels	1.4	68
Forest	Blaisdon and Longhope	1.5	77
Forest	Bromesberrow and Dymock	1.7	90
Forest	Pillowell	1.7	90
Forest	Alvington, Aylburton and West Lydney	1.8	95
Forest	Redmarley	1.8	95
Forest	Lydbrook and Ruardean	1.9	103
Forest	Lydney North	1.9	103
Forest	Littledean and Ruspidge	2.0	108
Forest	Mitcheldean and Drybrook	2.1	114
Forest	Awre	2.3	117
Forest	Bream	2.7	124
Forest	Coleford East	2.9	127
Forest	Newent Central	2.9	127
Forest	Cinderford East	3.2	130
Forest	Cinderford West	3.2	130
Forest	Coleford Central	3.7	135
Forest	Lydney East	4.3	141

	lowest 10% of county
	first quartile of county
	second quartile of county
	third quartile of county
	fourth quartile of county
	highest 10% of county

\* 1 = "best" and 146 = "worst"

Table 7 shows overall claimant rates for the Forest of Dean District wards and their position relative to all wards in Gloucestershire.

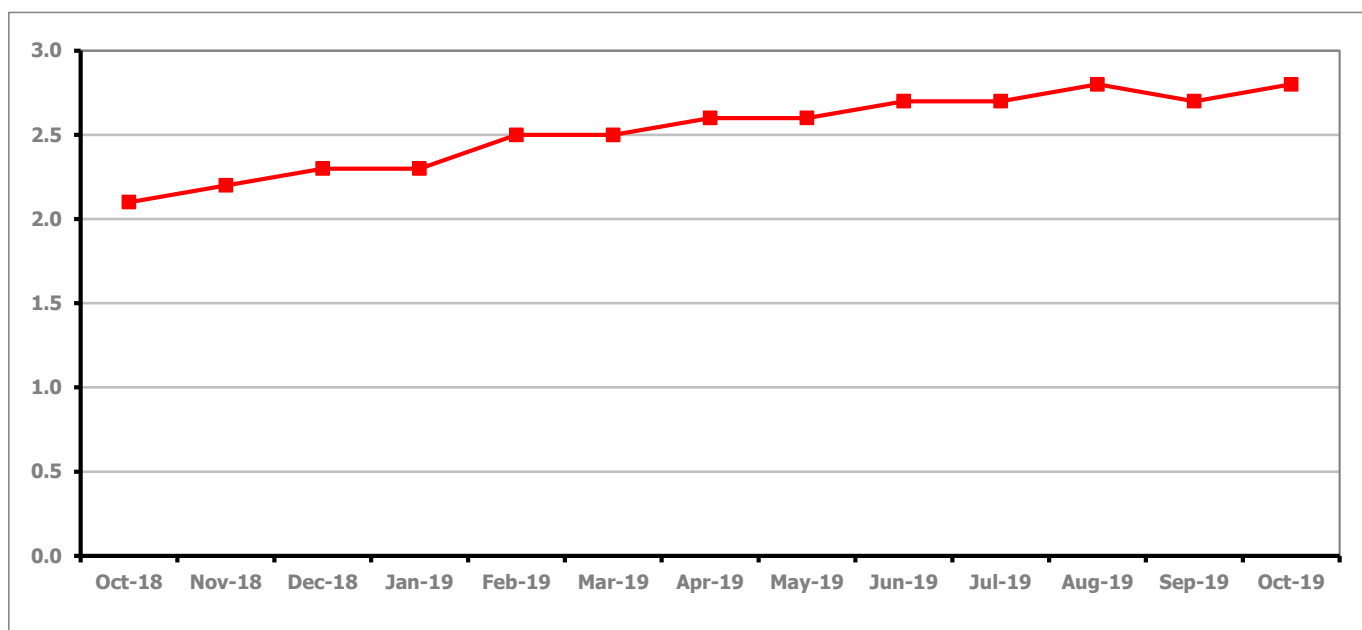
**PART 4: LOCAL AUTHORITY DISTRICT AND WARD ANALYSIS****4.4 Gloucester City****Claimant Rate and Claimant Count***Figure 9: Gloucester City claimant rate over the last year*

Figure 9 shows the claimant rate for Gloucester City increased in October 2019 to 2.8%.

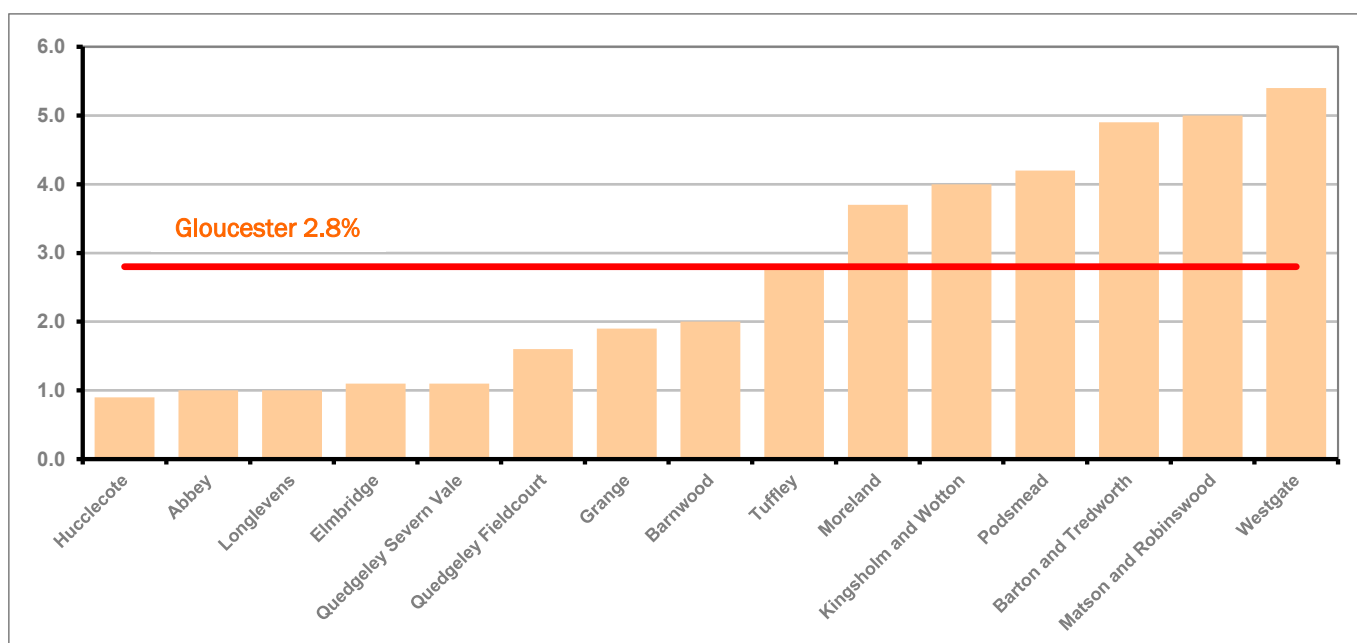
*Figure 10: Claimant rates across Gloucester City wards - October 2019*

Figure 10 shows the claimant rates for Gloucester City district wards. The red line represents the average claimant rate across the City of 2.8%. Six wards lie above the average.

## PART 4: LOCAL AUTHORITY DISTRICT AND WARD ANALYSIS

### 4.4 Gloucester City continued...

Table 8: Analysis of Claimant Count at Gloucester City ward level - October 2019

District	Ward	Rate	Rank*
Gloucester	Hucclecote	0.9	25
Gloucester	Abbey	1.0	33
Gloucester	Longlevens	1.0	33
Gloucester	Elmbridge	1.1	45
Gloucester	Quedgeley Severn Vale	1.1	45
Gloucester	Quedgeley Fieldcourt	1.6	83
Gloucester	Grange	1.9	103
Gloucester	Barnwood	2.0	108
Gloucester	Tuffley	2.8	126
Gloucester	Moreland	3.7	135
Gloucester	Kingsholm and Wotton	4.0	139
Gloucester	Podsmead	4.2	140
Gloucester	Barton and Tredworth	4.9	144
Gloucester	Matson and Robinswood	5.0	145
Gloucester	Westgate	5.4	146

	lowest 10% of county
	first quartile of county
	second quartile of county
	third quartile of county
	fourth quartile of county
	highest 10% of county

\* 1 = "best" and 146 = "worst"

Table 8 shows overall claimant rates for Gloucester City wards and their position relative to all wards in Gloucestershire.

## PART 4: LOCAL AUTHORITY DISTRICT AND WARD ANALYSIS

### 4.5 Stroud District

#### Claimant Rate and Claimant Count

Figure 11: Stroud District claimant rate over the last year

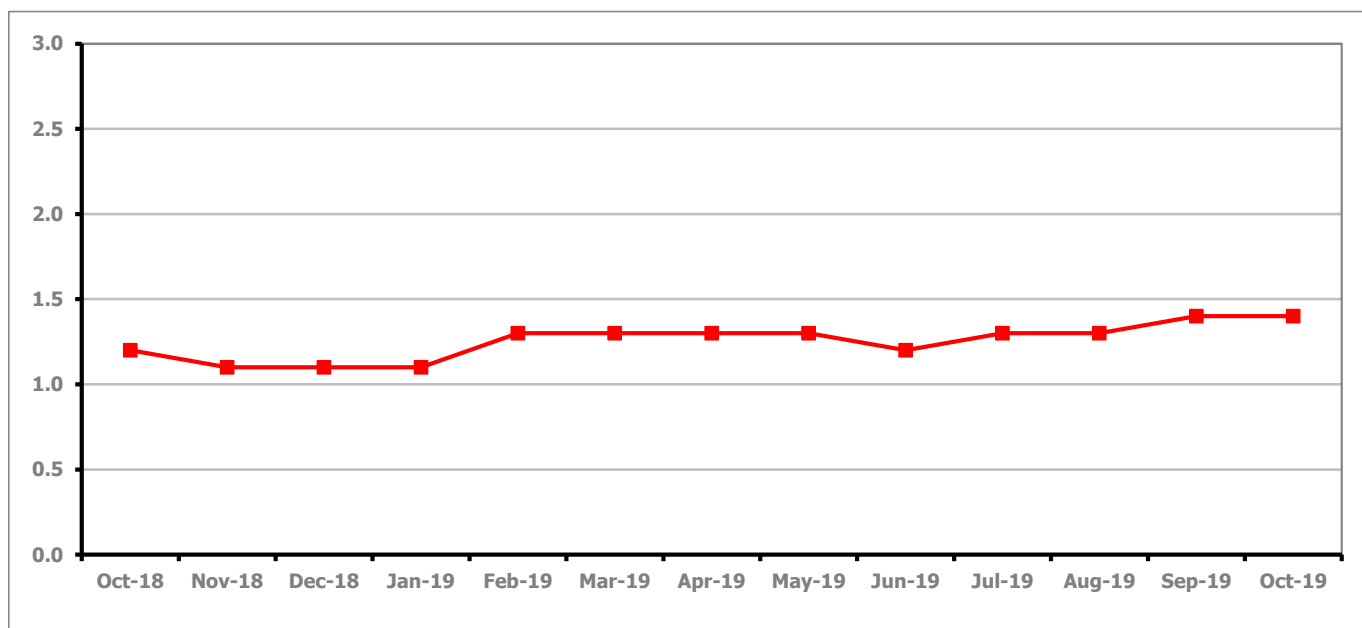


Figure 11 shows the claimant rate for Stroud stayed the same as last month at 1.4%.

Figure 12: Claimant rates across Stroud District wards - October 2019

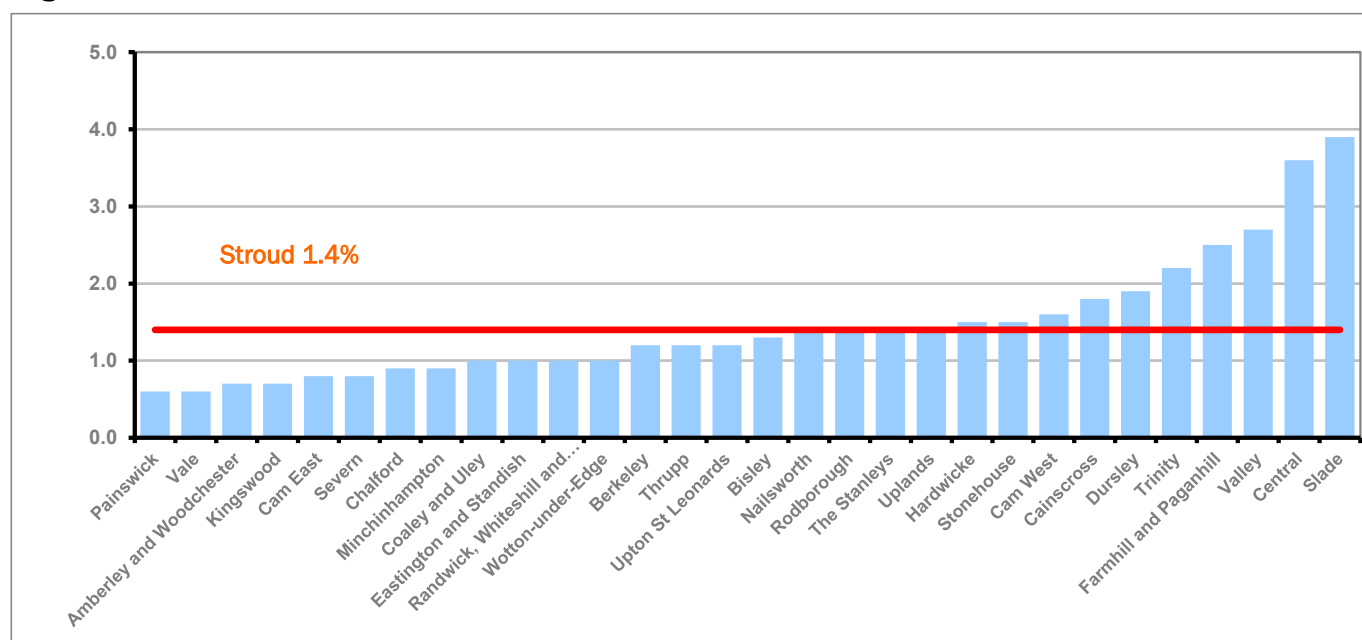


Figure 12 shows the claimant rates in Stroud District wards. The red line represents the average claimant rate across the District of 1.4%. Ten wards are above the average.

## PART 4: LOCAL AUTHORITY AND DISTRICT ANALYSIS

### 4.5 Stroud District continued...

Table 9: Analysis of Claimant Count at Stroud District ward level - October 2019

District	Ward	Rate	Rank*
Stroud	Painswick	0.6	3
Stroud	Vale	0.6	3
Stroud	Amberley and Woodchester	0.7	6
Stroud	Kingswood	0.7	6
Stroud	Cam East	0.8	16
Stroud	Severn	0.8	16
Stroud	Chalford	0.9	25
Stroud	Minchinhampton	0.9	25
Stroud	Coaley and Uley	1.0	33
Stroud	Eastington and Standish	1.0	33
Stroud	Randwick, Whiteshill and Ruscombe	1.0	33
Stroud	Wotton-under-Edge	1.0	33
Stroud	Berkeley	1.2	50
Stroud	Thrupp	1.2	50
Stroud	Upton St Leonards	1.2	50
Stroud	Bisley	1.3	57
Stroud	Nailsworth	1.4	68
Stroud	Rodborough	1.4	68
Stroud	The Stanleys	1.4	68
Stroud	Uplands	1.4	68
Stroud	Hardwicke	1.5	77
Stroud	Stonehouse	1.5	77
Stroud	Cam West	1.6	83
Stroud	Cainscross	1.8	95
Stroud	Dursley	1.9	103
Stroud	Trinity	2.2	116
Stroud	Farmhill and Paganhill	2.5	122
Stroud	Valley	2.7	124
Stroud	Central	3.6	132
Stroud	Slade	3.9	138

	lowest 10% of county
	first quartile of county
	second quartile of county
	third quartile of county
	fourth quartile of county
	highest 10% of county

\* 1 = "best" and 146 = "worst"

Table 9 shows overall claimant rates for Stroud District wards and their position relative to all wards in Gloucestershire.

## PART 4: LOCAL AUTHORITY DISTRICT AND WARD ANALYSIS

### 4.6 Tewkesbury Borough

#### Claimant Rate and Claimant Count

Figure 13: Tewkesbury Borough claimant rate over the last year

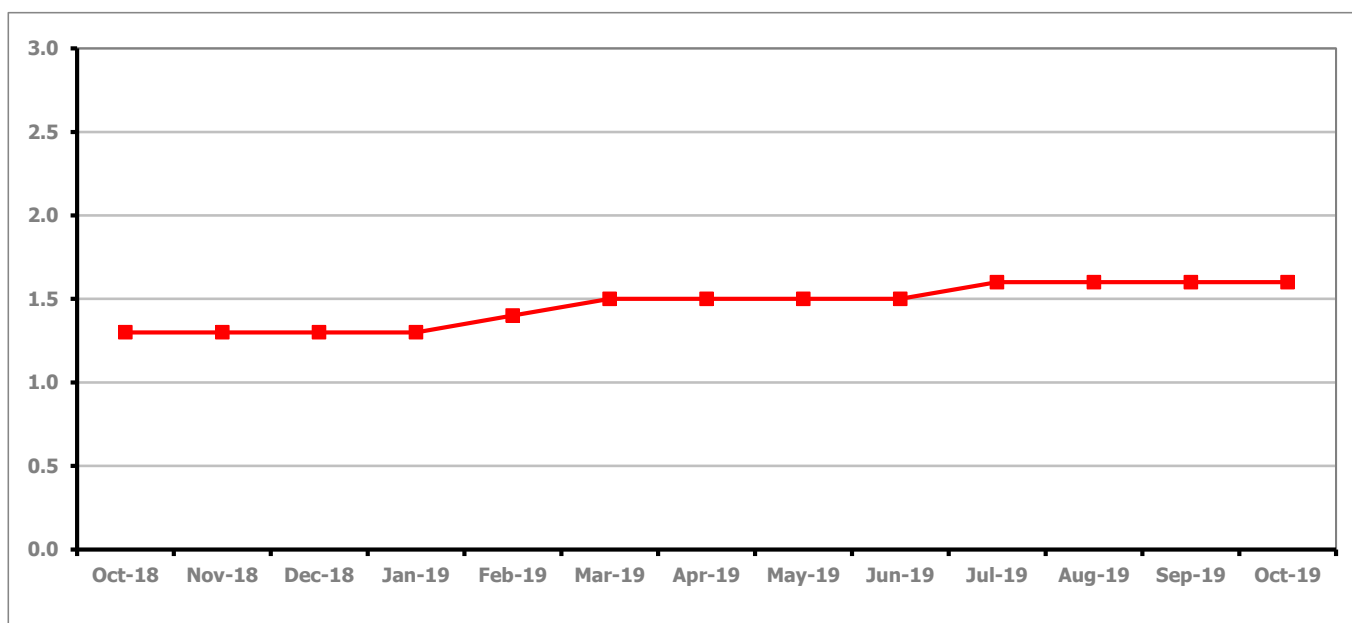


Figure 13 shows the claimant rate for Tewkesbury Borough stayed the same as last month at 1.6%.

Figure 14: Claimant rates across Tewkesbury Borough wards - October 2019

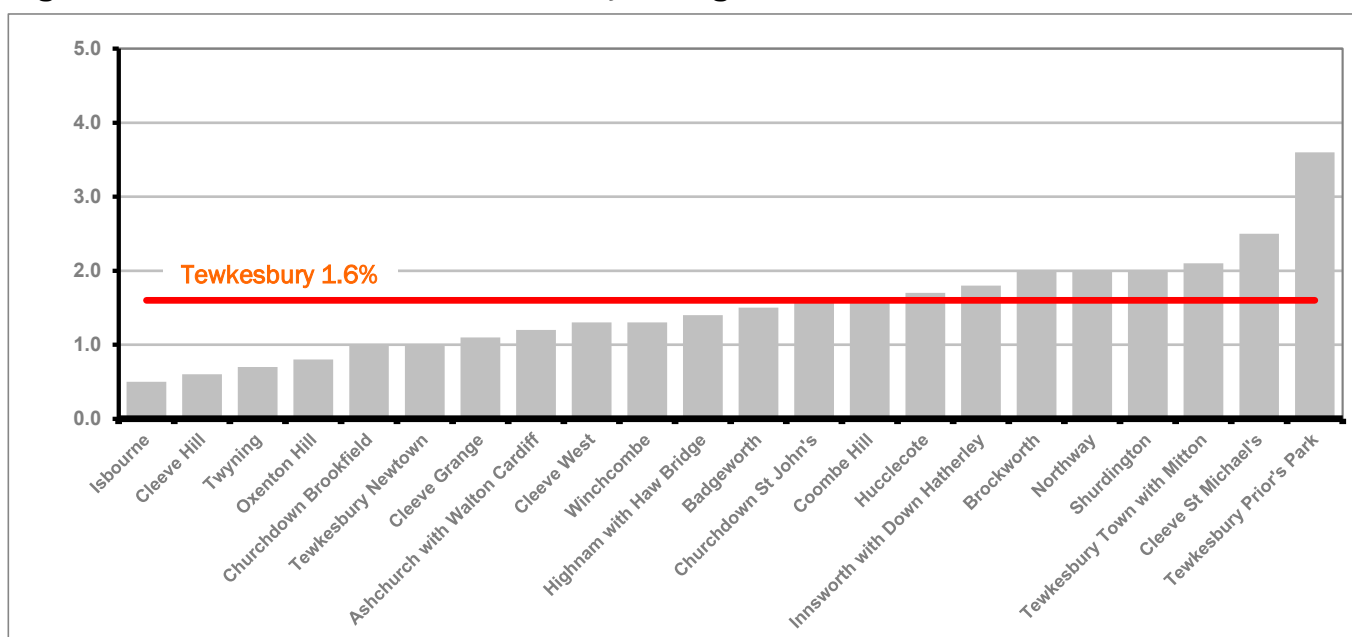


Figure 14 shows the claimant rates in Tewkesbury Borough wards. The red line represents the average claimant rate across the District of 1.6%. Eight wards are above the average.

## PART 4: LOCAL AUTHORITY AND DISTRICT ANALYSIS

### 4.6 Tewkesbury Borough continued...

Table 10: Analysis of Claimant Count at Tewkesbury Borough level - October 2019

District	Ward	Rate	Rank*
Tewkesbury	Isbourne	0.5	2
Tewkesbury	Cleeve Hill	0.6	3
Tewkesbury	Twyning	0.7	6
Tewkesbury	Oxenton Hill	0.8	16
Tewkesbury	Churchdown Brookfield	1.0	33
Tewkesbury	Tewkesbury Newtown	1.0	33
Tewkesbury	Cleeve Grange	1.1	45
Tewkesbury	Ashchurch with Walton Cardiff	1.2	50
Tewkesbury	Cleeve West	1.3	57
Tewkesbury	Winchcombe	1.3	57
Tewkesbury	Highnam with Haw Bridge	1.4	68
Tewkesbury	Badgeworth	1.5	77
Tewkesbury	Churchdown St John's	1.6	83
Tewkesbury	Coombe Hill	1.6	83
Tewkesbury	Hucclecote	1.7	90
Tewkesbury	Innsworth with Down Hatherley	1.8	95
Tewkesbury	Brockworth	2.0	108
Tewkesbury	Northway	2.0	108
Tewkesbury	Shurdington	2.0	108
Tewkesbury	Tewkesbury Town with Mitton	2.1	114
Tewkesbury	Cleeve St Michael's	2.5	122
Tewkesbury	Tewkesbury Prior's Park	3.6	132

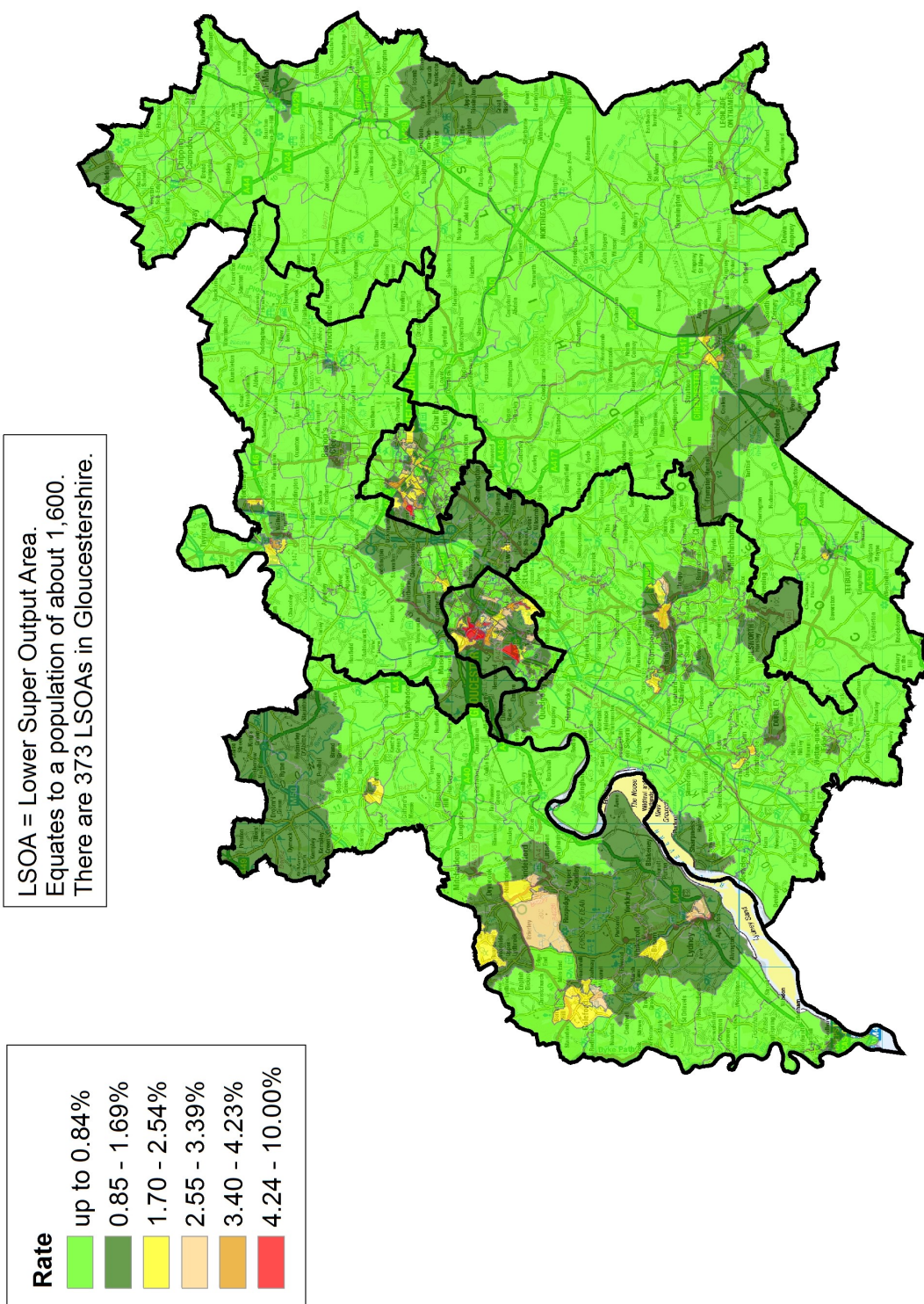
	lowest 10% of county
	first quartile of county
	second quartile of county
	third quartile of county
	fourth quartile of county
	highest 10% of county

\* 1 = "best" and 146 = "worst"

Table 10 shows overall claimant rates for Tewkesbury Borough wards and their position relative to all wards in Gloucestershire.

## PART 5: MAP SHOWING DISTRIBUTION OF CLAIMANT RATE ACROSS GLOUCESTERSHIRE

### Claimant Count Rate by LSOA in Gloucestershire, October 2019

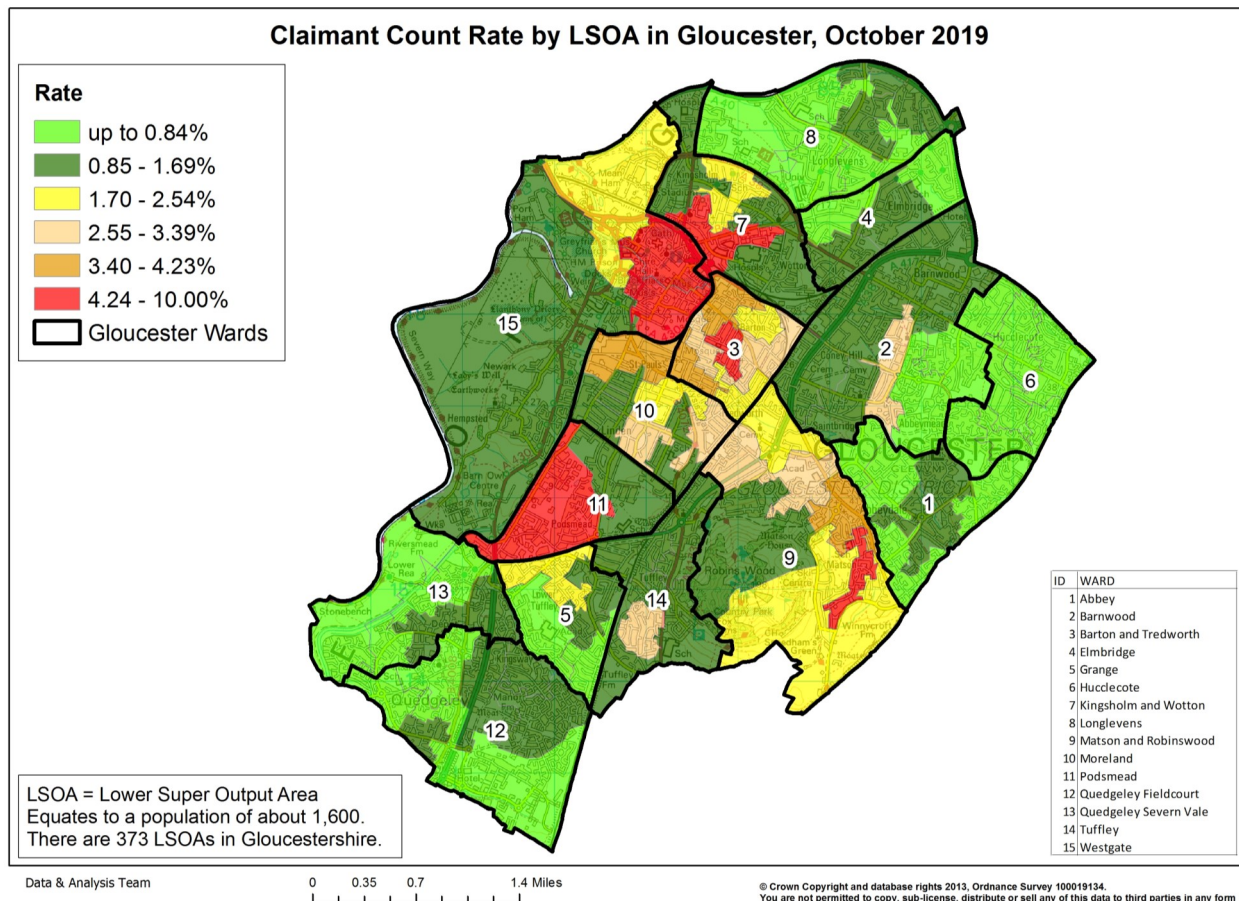
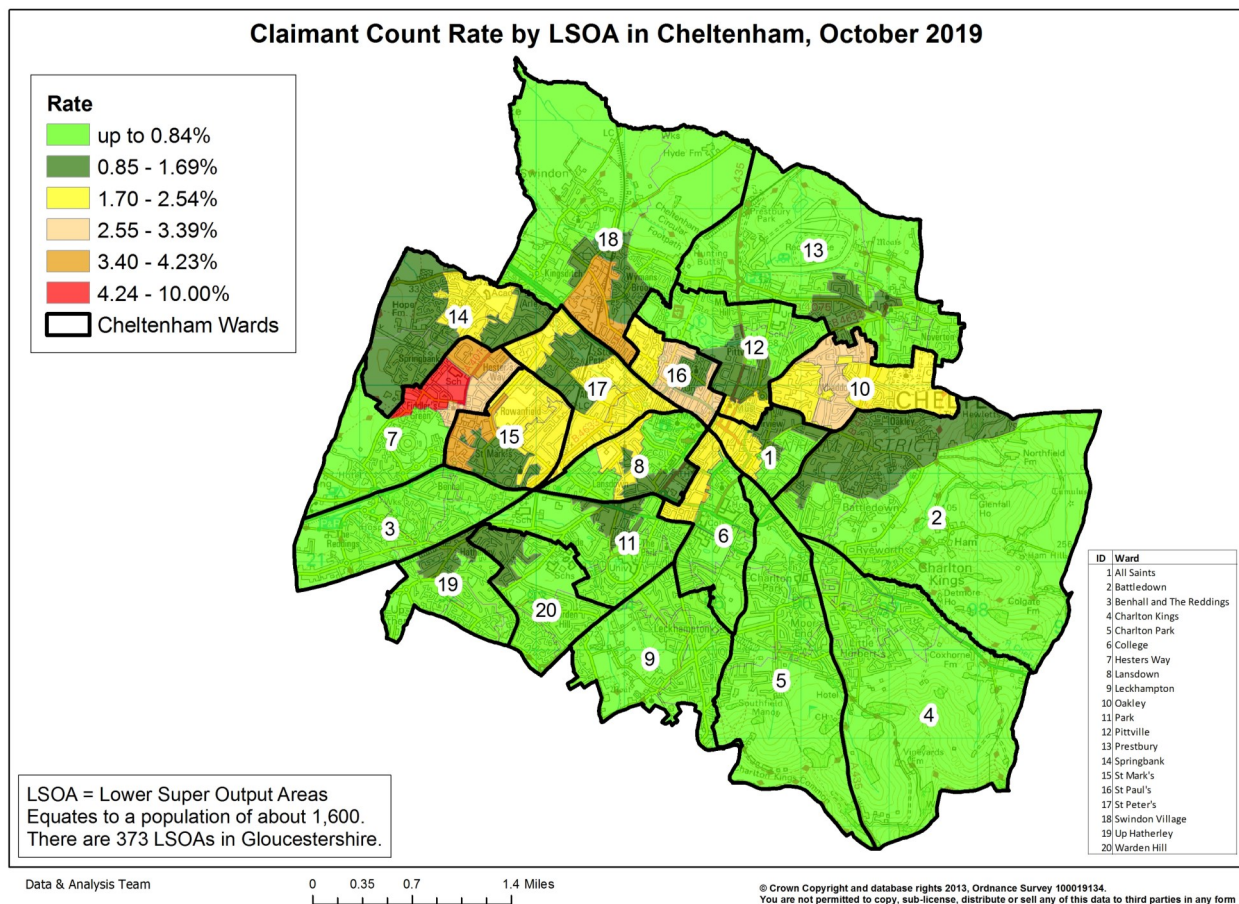


Data &amp; Analysis Team

0 2.75 5.5 11 Miles

© Crown Copyright and database rights 2013. Ordnance Survey 100019134.  
You are not permitted to copy, sub-license, distribute or sell any of this data to third parties in any form

## PART 5: MAP SHOWING DISTRIBUTION OF CLAIMANT RATE ACROSS GLOUCESTERSHIRE



## PART 6: YOUTH UNEMPLOYMENT(18-24 year olds)

### Youth Claimant Rate and Claimant Count

Figure 15: Claimant Count for Gloucestershire over the past year

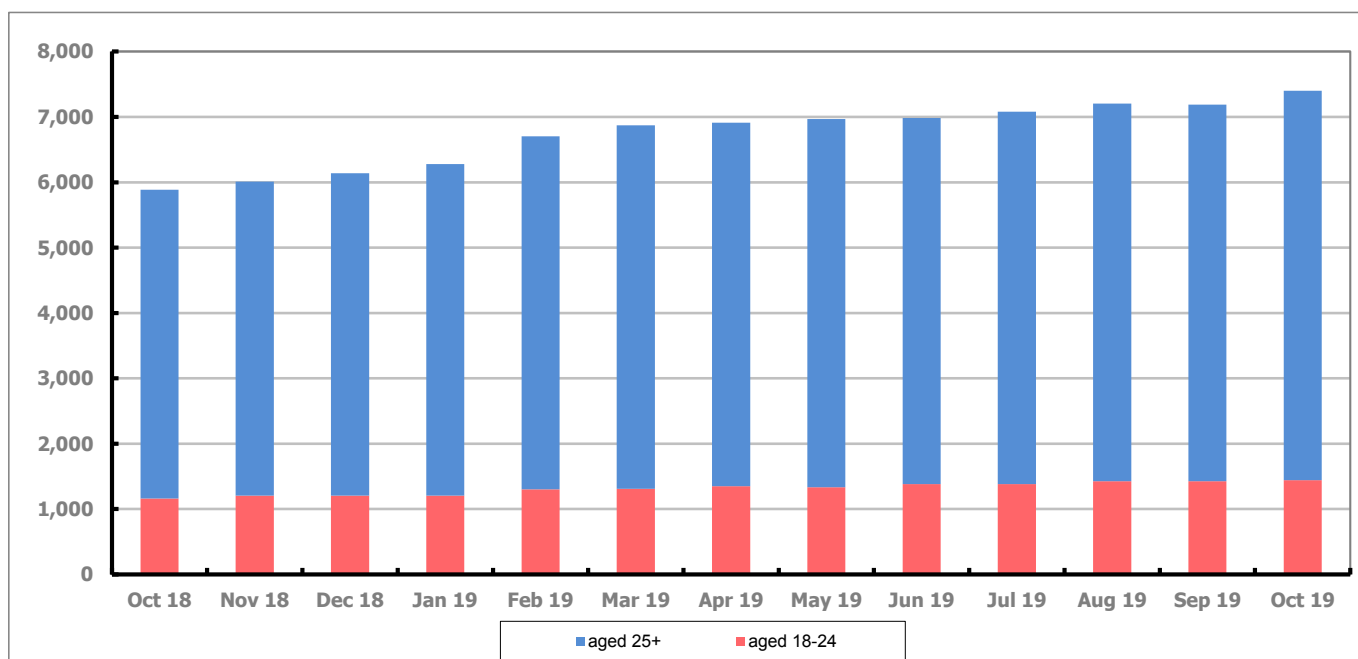


Figure 15 shows that in October 2019, 1,440 people aged 18-24 were claiming Job Seekers Allowance and Universal Credit who were not in work in Gloucestershire, this represents 19.4% of total working age claimants.

## PART 7: YOUNG PEOPLE NOT IN EDUCATION, EMPLOYMENT OR TRAINING (NEET) IN GLOUCESTERSHIRE

Data provided by Gloucestershire Youth Support Team on the situation of young people (16-18) in Gloucestershire who are not in education, employment or formal training.

Gloucestershire Youth Support Team is required to report performance with the 16-18 age range against nationally defined criteria for counting the NEET group. The NEET group includes young people actively seeking education, employment or training as well as those young people who are either not yet ready or who are unable to access these opportunities because of their personal circumstances. The figures quoted below include young people in both of these categories.

### Summary

At the end of October 2019 there were 451 young people aged 16-18 not in education, employment or training in Gloucestershire and this figure translates into an adjusted (\*) 16-18 NEET population of 2.64%. The total number of NEET young people increased by 105 in October 2019 compared to September 2019, all districts saw an increase in their figures.

### Total NEET Group by District Area

#### October 2019 NEET data

	Cheltenham	Cotswold	Forest	Gloucester	Stroud	Tewkesbury	Total
Total NEET	88	36	67	133	71	56	451
Cohort	3099	2445	2335	4151	3624	2555	18209
% NEET	2.84	1.47	2.87	3.20	1.96	2.19	2.64*

If you would like to receive any further information on Gloucestershire's NEET strategy then please contact [Lynne.Speak@Prospects.co.uk](mailto:Lynne.Speak@Prospects.co.uk) or telephone 07900 391182.

(\*) Adjustment includes a proportion of young people aged 16-18 whose outcomes are not known to Gloucestershire Youth Support Team.