

Early Years Childminder Newsletter - December 2025



Dear Childminders,

Welcome to your December Newsletter, this year has flown by, I hope you are enjoying all the lovely winter activities and getting ready for all the Christmas festivities. I have seen some fantastic examples of Christmas cards and other crafts allowing the children to explore their creativity whilst creating wonderful gifts for family and friends.

In this newsletter there is information about a language intervention program, the safeguarding updates, and a message from the Business team. You can book on for the next free childminder play session, and our future Network meetings - there are some guest speakers coming along to the sessions so do have a look and book on if you are interested. There is the next CPD session from the Bristol and Beyond Stronger Practice Hub and [Ofsted are delivering a free online session on the new inspection framework](#). Finally, for any childminders in the

Dursley area the local Bupa dentist have information for any families struggling with oral health.

Language Intervention Enrichment

Please see the poster below for information about delivering language intervention enrichment in your setting.



The poster is titled "Language Intervention Enrichment" and is framed with a green border. It features logos for the Nuffield Foundation, Childminder-delivered Language Enrichment in the Early Years (CLE-EY), and UCL. The main heading asks, "Do you want to support the communication and language development of children in your setting?". Below this, it states they are looking for passionate childminders interested in delivering NELI Preschool, a language intervention designed to support communication and language development. An illustration shows a group of diverse children sitting around a table, looking at a book. The poster lists who can take part (registered childminders caring for at least one 3-4-year-old, attending three or more days a week) and what's involved (a 20-week programme of fun language enrichment sessions, training in language development, a brand-new children's book every week, and shared reading and language-boosting activities). It provides a QR code to scan to complete an expression of interest form, with a link <https://bit.ly/4hANvHt> below it. Alternatively, it provides an email address: charlotte.wray@ucl.ac.uk. At the bottom, it gives contact details for the Principal Researcher: Dr Gillian West, g.west@ucl.ac.uk.

Nuffield Foundation

**Childminder-delivered
Language Enrichment in the
Early Years (CLE-EY)**

UCL

Do you want to support the communication and language development of children in your setting?

We're looking for passionate childminders interested in delivering **NELI Preschool**— a language intervention designed to support communication and language development.



Who can take part?

Registered childminders currently caring for at least one 3–4-year-old, attending three or more days a week.

What's involved?

By taking part, you will:

- Deliver a 20 week programme of fun language enrichment sessions
- Receive training in language development & how to deliver NELI Preschool
- Enjoy a brand-new children's book every week
- Engage children with shared reading and language-boosting activities

How do I find out more?

Scan the QR code to complete the expression of interest form and a researcher will contact you.

Alternatively email Charlotte Wray
charlotte.wray@ucl.ac.uk



<https://bit.ly/4hANvHt>

Contact details of the Principal Researcher: Dr Gillian West, g.west@ucl.ac.uk

IMPORTANT! EYFS Safeguarding

Assurance Declaration

All Early Years providers are expected to use the EYFS Safeguarding Assurance Declaration as a working document to self-evaluate their safeguarding practices.

As part of the Gloucestershire Safeguarding Children Partnership's (GSCP) published arrangements, the EYFS Section 3 Assurance Declaration Procedure is required to be completed by all childminders and group-based providers.

It reflects Early Years settings' legal obligations under Working Together to Safeguard Children, Section 11 of the Children Act 2004, and Section 3 of the EYFS framework.

The EY Quality Improvement team have worked in collaboration with Gloucestershire Safeguarding Children Partnership to re-develop the current EYFS Safeguarding Assurance declaration in response to feedback received from the sector about previous versions.

To ensure ease of use and provide familiarity, the declaration will now follow the same order as the EYFS Safeguarding and Welfare requirements and will include some handy prompts to support completion.

The updated declaration can be initially completed in shorter, more manageable sections throughout the year and should then be reviewed regularly and updated as required.

The updated assurance declaration is now live - link below:

[Assurance Declaration Online Platform](#)

Previous assurance declaration submissions will remain visible on the portal for the next 12 months before being removed.

For further guidance, please read the Early Years Foundations Stage Section 3 Safeguarding Declaration Protocol - 2025 and visit the GSCP's Partnership Assurance Declaration Webpage.

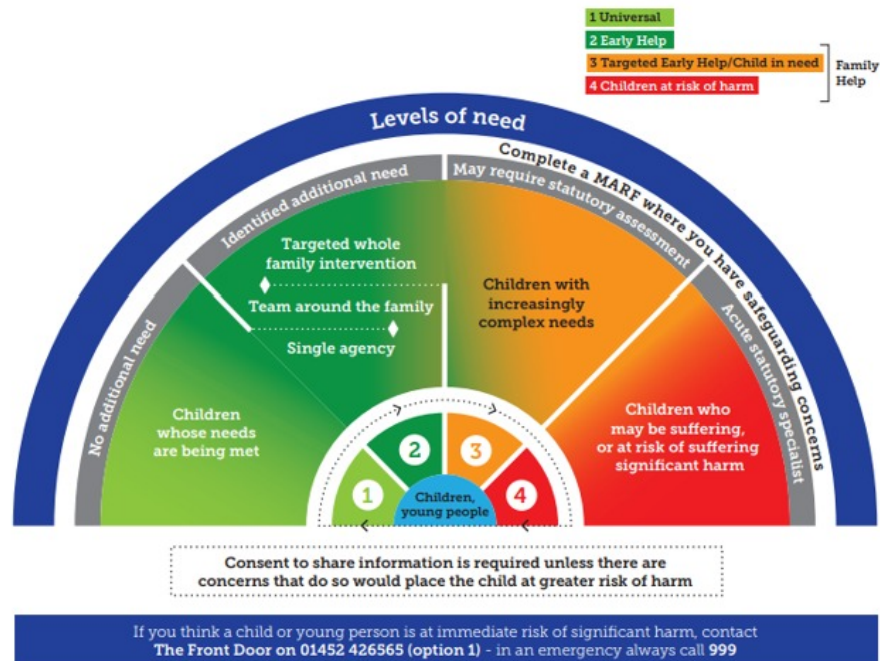
[Early Years Foundation Stage Section 3 Safeguarding Declaration Protocol - 2025](#)

Levels of Intervention

The Gloucestershire levels of intervention document has been updated:

The Windscreen

A diagram to demonstrate the Continuum of Need



Levels of Intervention - Gloucestershire 2025

Update for Childminders: Document Review in Progress

Thank you to everyone who has submitted their documents so far - the business team appreciate your prompt response and the time taken to send these through.

We kindly ask for patience as we are currently reviewing all submissions and aim to have checked all policies and invoices as quickly as possible. For any further information or clarification, please get in touch.

Have you sent everything we need?

Please make sure you've submitted:

- A copy of an **invoice** (or an invoice template)
- A copy of your **parental contract or fee policy** (showing private rates or voluntary charges)

When sending an invoice, check it includes:

- The word '**invoice**'
- Invoice number and date
- Period covered (eg monthly, termly)
- Child's name and parent(s) name
- Provider details (business name, address, contact info)
- Method of payment (eg BACS, cash, cheque)
- Itemised charges and **total amount due**

If you notice any missing details, please resend updated documents as soon as possible.

Important: All parents should receive an invoice, even if there are no charges.

Invoices help parents confirm their child's funded hours and can support applications such as Universal Credit. If you do not normally invoice because a child only uses their funded entitlement, please still provide an invoice or a termly/monthly/yearly statement showing the hours claimed. This ensures transparency and helps parents understand they are receiving their full entitlement.

Childminder Play Session (Free to attend)

The next free Childminder Network play session is available to book now.

The perfect opportunity to meet up with other local childminders, share tips and socialise in a relaxed and friendly environment. Please bring your own snacks and drinks.

**Venue: The Link Children's Centre, Matson Avenue, Matson,
Gloucester, Gloucestershire GL4 6DB**

Date: 9 December 2025, 9:30 - 11:30am

After you have booked your place on GCC Plus please email me at caroline.vans@gloucestershire.gov.uk to let me know how many adults and children you will be bringing in total so that we can let the venue know how many to expect - Thank you.

Book - Childminder Play Session: 9 December 2025

Childminder Network Meetings (Teams)

Please use the opportunity to attend the Network meetings, which are all free, or they may drop to termly events. We discuss a different topic at each event, please see below for the upcoming dates and topic areas.

11 December 2025, 7.00-8.00pm, online via TEAMS (free). Looking at safeguarding policies, and Adult Education are coming to explain options for Childminders.

Book: 11 December - Safeguarding Policies

19 January 2026, 7.00-8.00pm, online via TEAMS (free). Early Help are coming to explain what they offer and how you can refer to them.

Book: 19 January - Early Help

10 February 2026, 7.00-8.00pm, online via TEAMS (free). Early Years Alliance will be talking about their new Family Corner.

Book: 10 February - Early Years Alliance

If the links above don't take you straight to the training page please login to GCC Plus, click on the Training tab and search for it.

Stronger Practice Hub Events - Bristol

Early Years Teaching Hub

Free training sessions for Gloucestershire childminders:

[Physical Development-Gross Motor Skills to PE-with Helen Battelley](#) 3

December, 6-8pm

[Ofsted Education Inspection Framework Briefing](#) 8 December, 6.30-7.30

For Stroud/Dursley and surrounding areas from The Team at Bupa Dental Care Dursley

Bupa Dental Care Dursley are reaching out to share details of a new initiative designed to support children in our local community who are not currently accessing regular dental care.

This scheme is specifically intended for children from vulnerable or disadvantaged backgrounds who may face challenges attending a dental practice. The aim is to ensure these children do not miss out on vital oral health care and early interventions that can prevent long-term dental problems.

Through this initiative, eligible children will receive a **free NHS dental check-up and any necessary treatment, provided at the Dursley practice.**

They are seeking referrals from professionals and local services who may know of children in need of dental support. While they are particularly focused on children who have experienced dental decay, they also welcome referrals based on a range of risk factors, including:

- Medical conditions
- Special educational needs
- Families receiving benefits
- Involvement with a social worker
- High sugar diet
- Limited opportunities for early oral health learning at home
- Other social, emotional, or financial vulnerabilities

Importantly, any child without a dentist may be eligible if one or more of

these risk factors apply.

They are especially concerned about children **aged 0–5 years**, who were born post-COVID during a time when access to NHS dentistry has been particularly limited, especially for new patients. These early years are a critical window for preventing dental decay and establishing lifelong healthy habits.

This initiative is most suitable for families living in Cam, Dursley, or the surrounding areas, who are able to travel to the Dursley practice.

If you are aware of any children who may benefit from this support, or if you have concerns about a specific child, please contact us at bupadentalcare.v04958@nhs.net. Please contact caroline.vans@gloucestershire.gov.uk for the referral form.

If you have any questions or would like to discuss an individual case, please don't hesitate to reach out to Karen or Emma at the practice.

Thank you for your time and for helping us ensure every child has the opportunity to receive the dental care and early support they need.

Coram PACEY's Black Friday Sale is here!

Get **20%** off the [Childcare and Early Years Conference 2026](#) early bird tickets for Saturday 28 February with discount code: **[BLACKFRIDAY20](#)** - early bird sale closes Sunday 7 December.

You can also enjoy huge savings on selected products in the Coram PACEY shop, including **[15% off NEW memberships](#)** with the discount code: **[BFRIDAY15](#)**

PACEY Black Friday Sale

Thank you for reading and I hope you find the Childminder Newsletters informative and useful. Please email [Caroline Vans](#) with any questions. Alternatively, if you need something more urgent, please email the [Early Years Quality Team](#)

Please note; Some GCC+ training and events (excluding some meetings) are subject to a charge. Please check the price when you make your booking. If you are in any doubt, please email eyservice@gloucestershire.gov.uk

Please refer to the cancellation policy for your event, as charges may apply.

CANCELLATION POLICY

- 2 weeks before the training course is due to take place – 100% refund
- Less than 2 weeks before the training course is due to take place – 0% refund
- If GCC cancels a training course, we will issue a refund automatically. If you paid by credit card, the refund will be paid back to the same card. If you paid by invoice, you will receive a credit note.
- If you need to cancel your place on a training course within two weeks of the course and there are special circumstances, please contact eyservice@gloucestershire.gov.uk and we will consider your request on a case-by-case basis.



Gloucestershire County Council, Shire Hall, Westgate Street, Gloucester
GL1 2TJ

[Manage preferences](#) | [Contact us](#) | [Unsubscribe](#)