

Works Areas

Works in these areas (North side of Northgate Street) to include drainage enhancements, kerb realignment and paving to new Cycle Improvement scheme design.

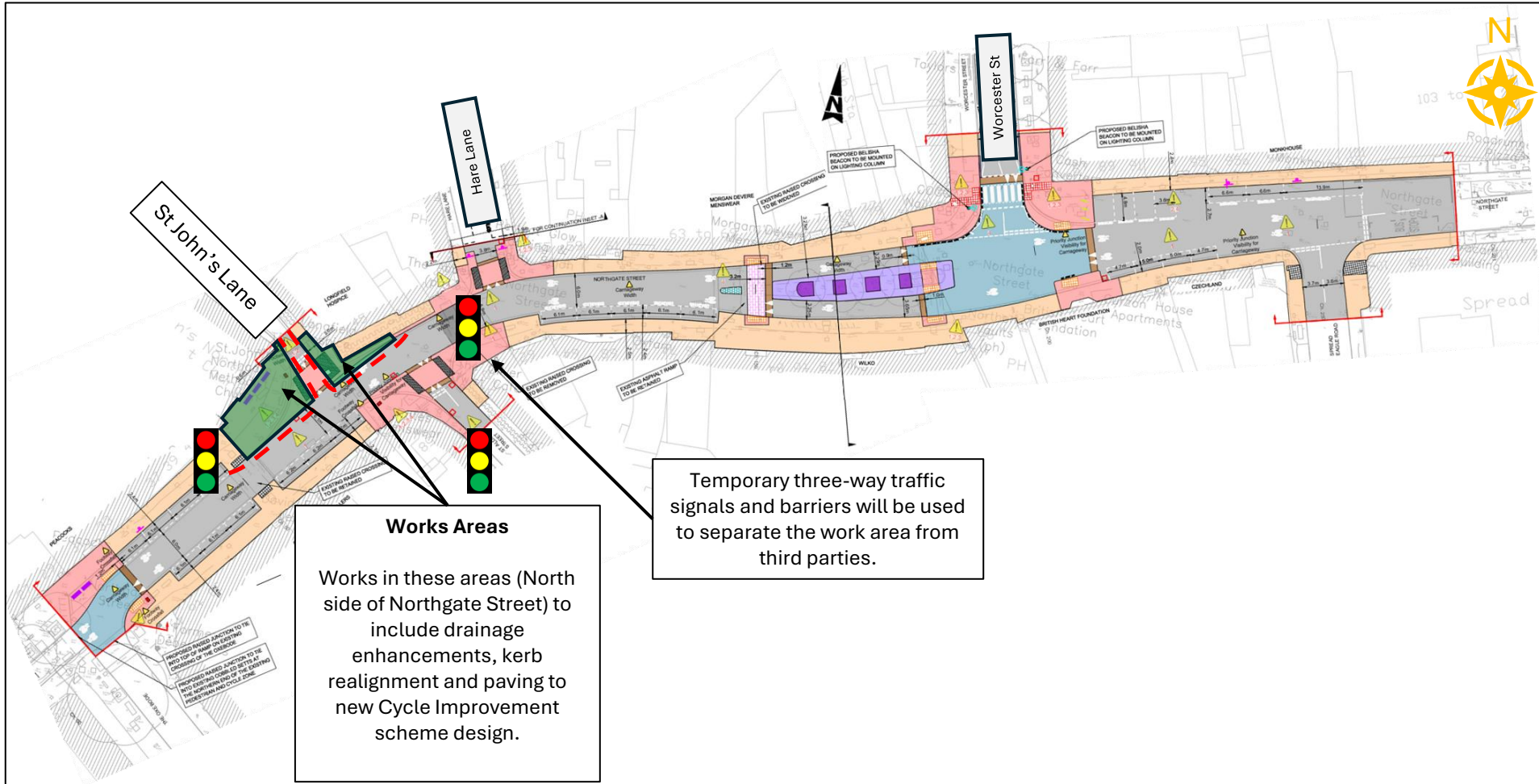
Temporary two-way traffic signals and barriers will be used to separate the work area from the public and to facilitate the removal of the northern raised table.

To minimise disruption to businesses and pedestrians, work on either side of Hare Lane will be carried out in two phases: the west side will be completed before starting the east side.

New paving across entrances to Perfect Glow and The Abbey (public house) to be carried out in two halves: Hare Lane entrance first, allowing pedestrians access, followed by Northgate Street.

Traffic to other areas of Northgate Street and adjoining roads to remain unaffected.

Indicates the approximate placement of cones & barriers



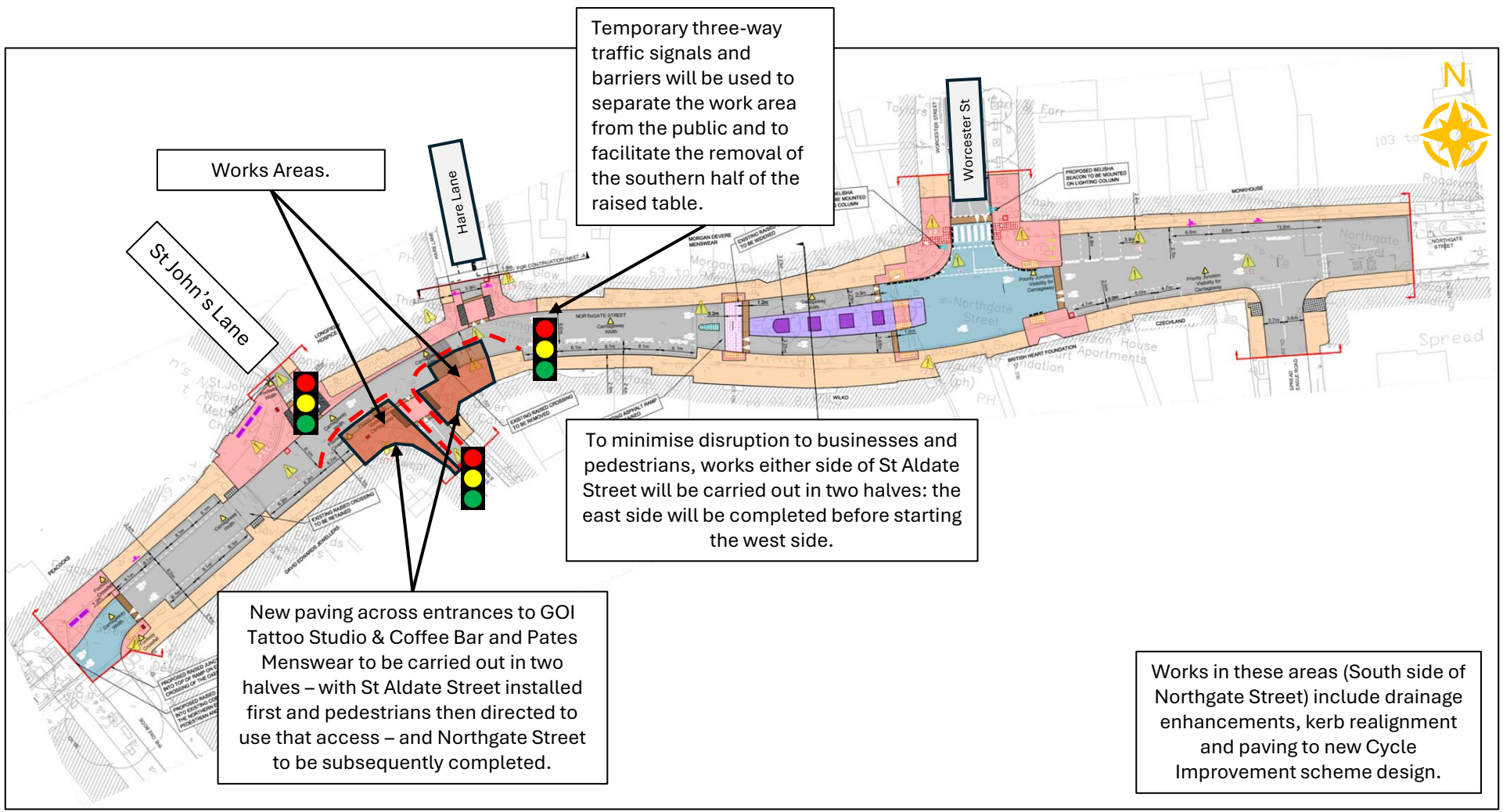
Traffic to other areas of Northgate Street and adjoining roads to remain unaffected.

Indicates the approximate placement of cones & barriers

MONTEL
CIVIL ENGINEERING

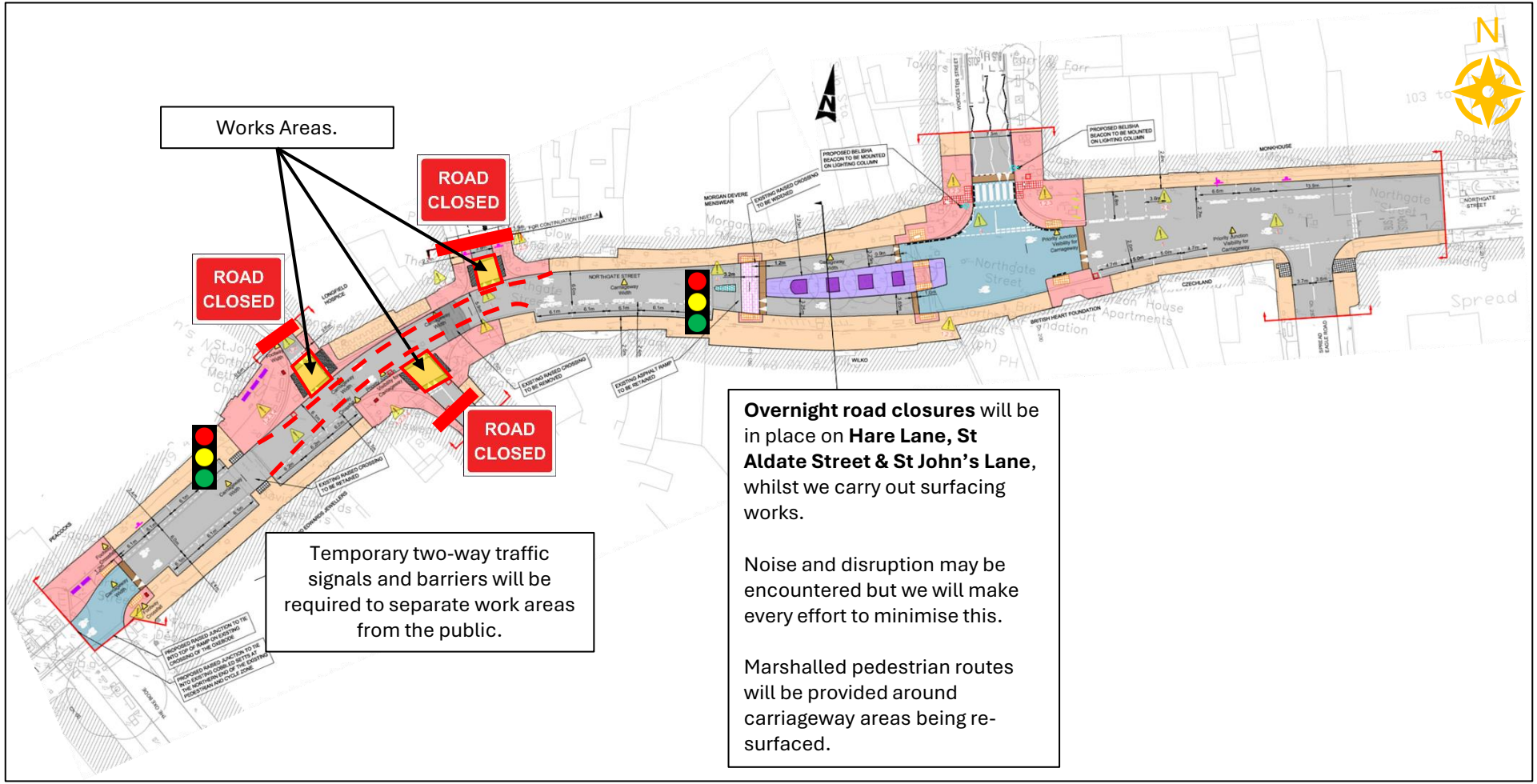
Gloucester City Centre Cycle Improvements

Northgate Street
Weeks Five to Nine (STC)



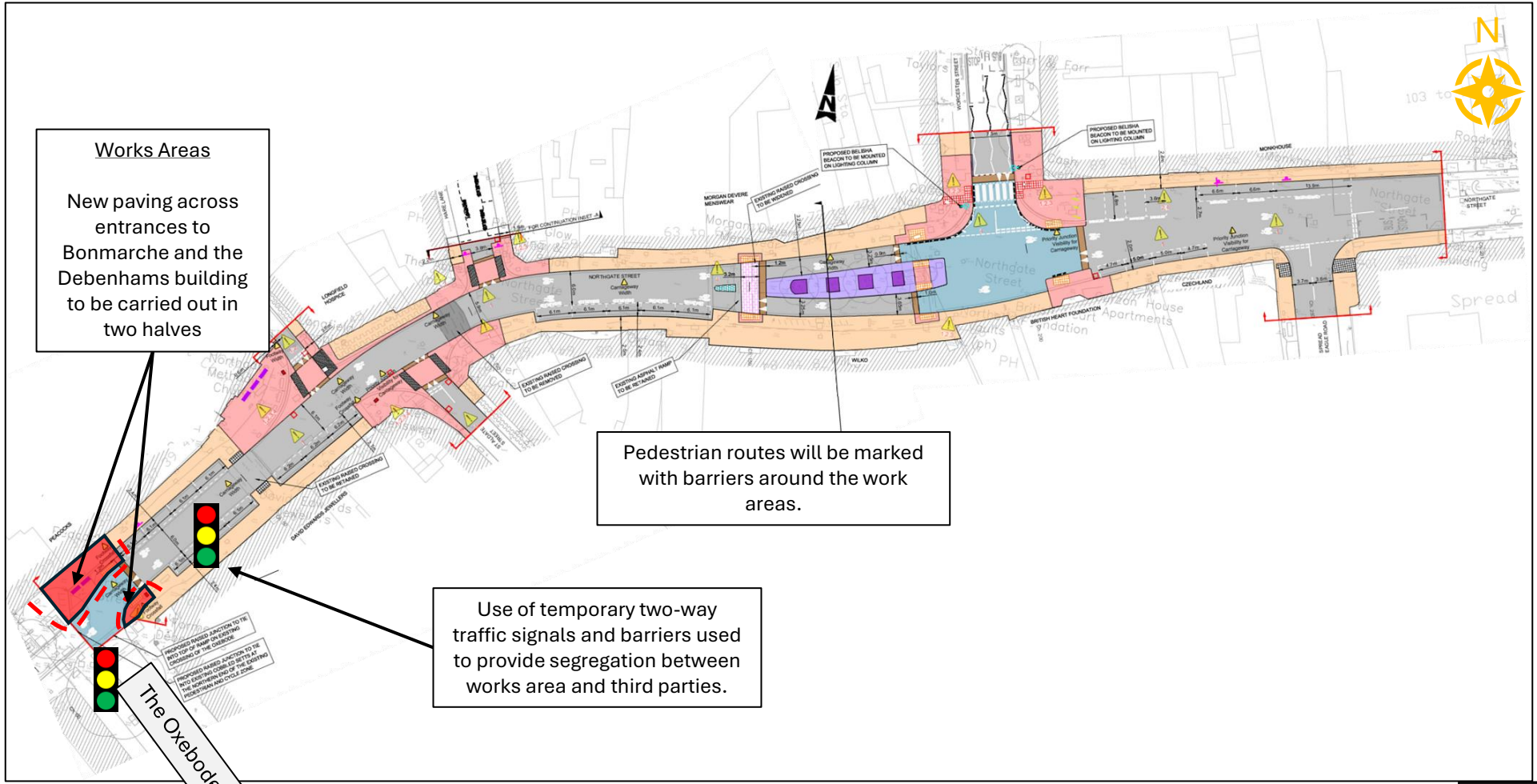
Traffic to other areas of Northgate Street and adjoining roads to remain unaffected.

Indicates the approximate placement of cones & barriers



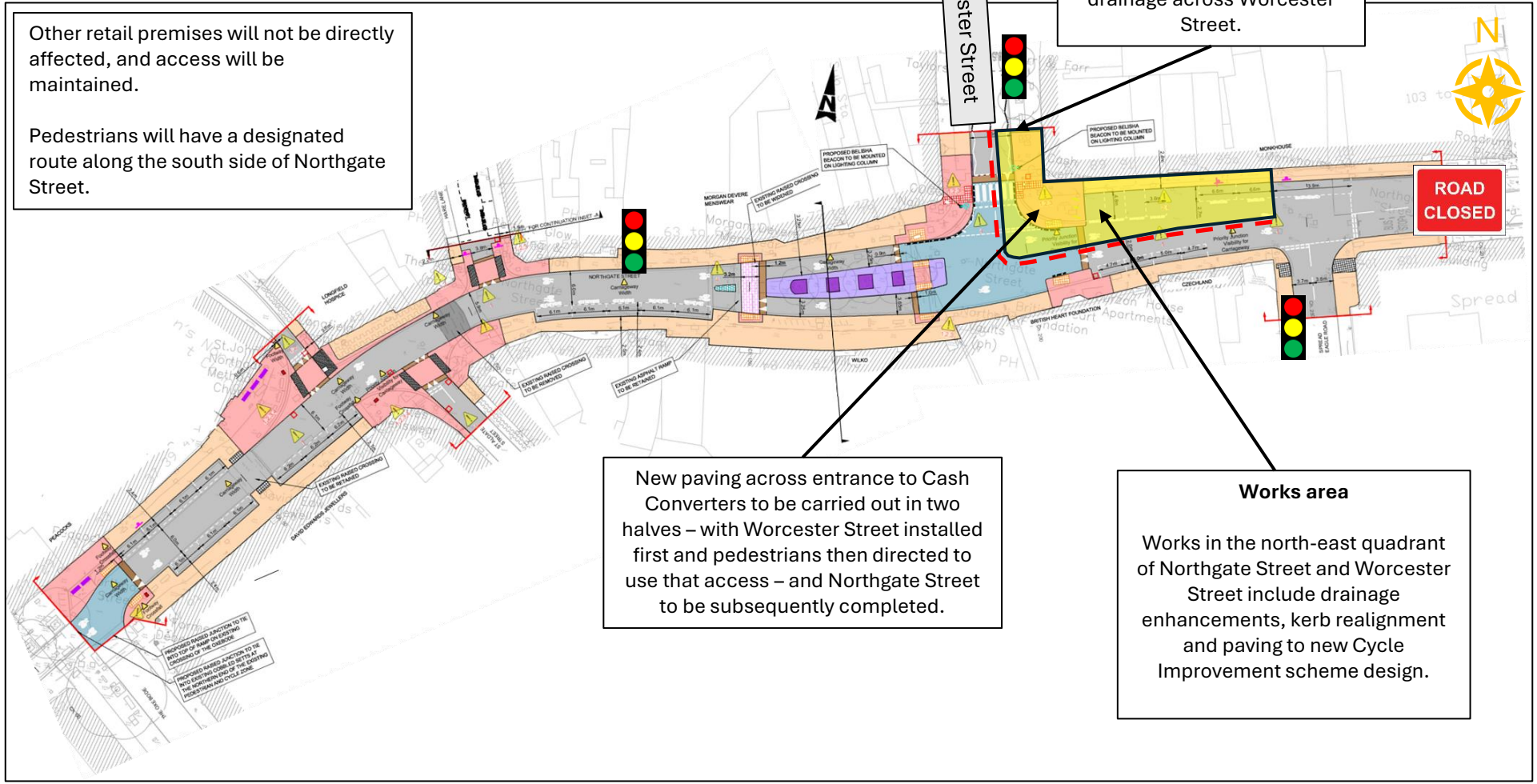
Traffic to other areas of Northgate Street and adjoining roads to remain unaffected.

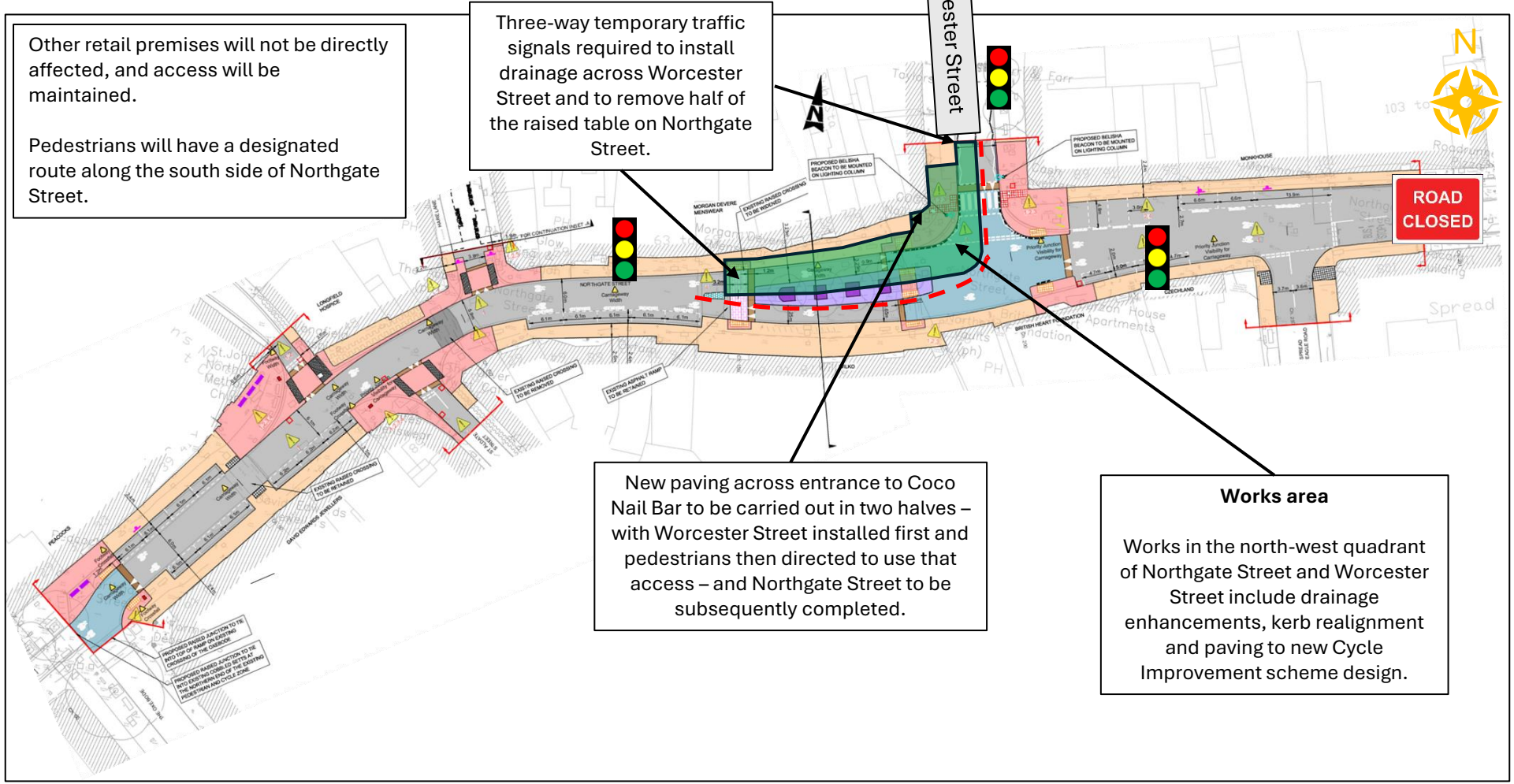
Indicates the approximate placement of cones & barriers



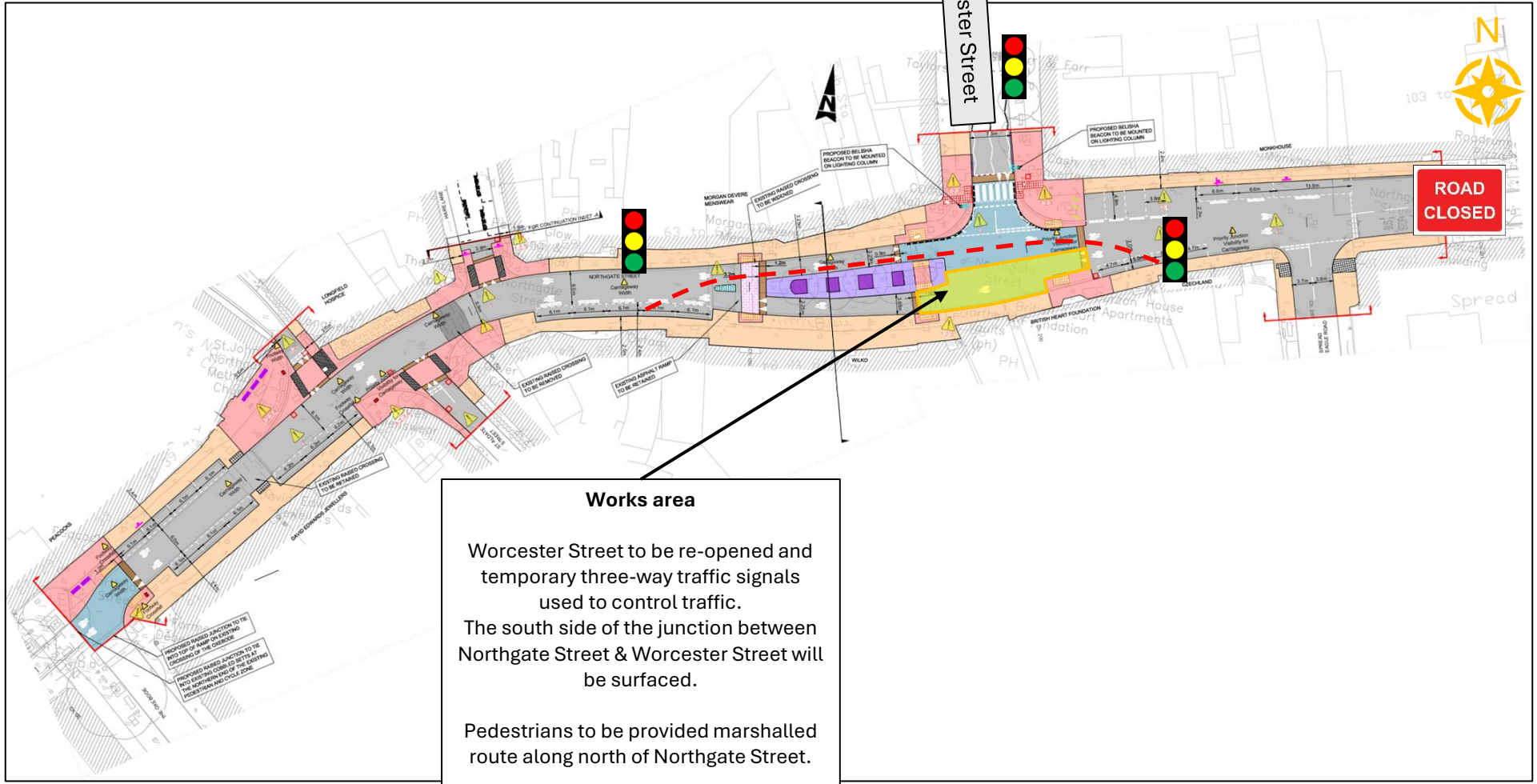
Traffic to other areas of Northgate Street and adjoining roads to remain unaffected.

Indicates the approximate placement of cones & barriers





**ROAD
CLOSED**



Works area

Worcester Street to be re-opened and temporary three-way traffic signals used to control traffic.

The south side of the junction between Northgate Street & Worcester Street will be surfaced.

Pedestrians to be provided marshalled route along north of Northgate Street.

Traffic to other areas of Northgate Street and adjoining roads to remain unaffected.

Indicates the approximate placement of cones & barriers

MONTEL CIVIL ENGINEERING 	
Gloucester City Centre Cycle Improvements	
Northgate Street Week Thirty – 2 nights (STC)	