

# Unemployment Bulletin

Issue 42 January 2012

## Contents

### Part 1: Summary

A summary of unemployment data at district, County, regional and national level

1

### Part 2: County

Unemployment figures for the County compared to the South West and the rest of the UK

3

### Part 3: Districts

A comparative break down of unemployment figures by district

4

### Part 4: Wards

Further breakdown of unemployment figures by ward:

Cheltenham

6

Cotswolds

8

Forest of Dean

10

Gloucester

12

Stroud

14

Tewkesbury

16

### Part 5: Map

Distribution of claimant rate across Gloucestershire

18

### Part 6: Young People

Data about Young People Not in Education, Employment or Training (NEET)

20

## INTRODUCTION

The Unemployment Bulletin provides a monthly update on unemployment data for Gloucestershire, the South West region and the United Kingdom. It is produced by the Strategic Needs Analysis Team in the County Council's Strategy and Challenge function. The data is sourced from the Office for National Statistics via Nomis ([www.nomis.co.uk](http://www.nomis.co.uk)).

The claimant count measures the number of people claiming unemployment-related benefit (currently Job Seeker's allowance). The claimant rate is the number of claimants as a proportion of the working age population.

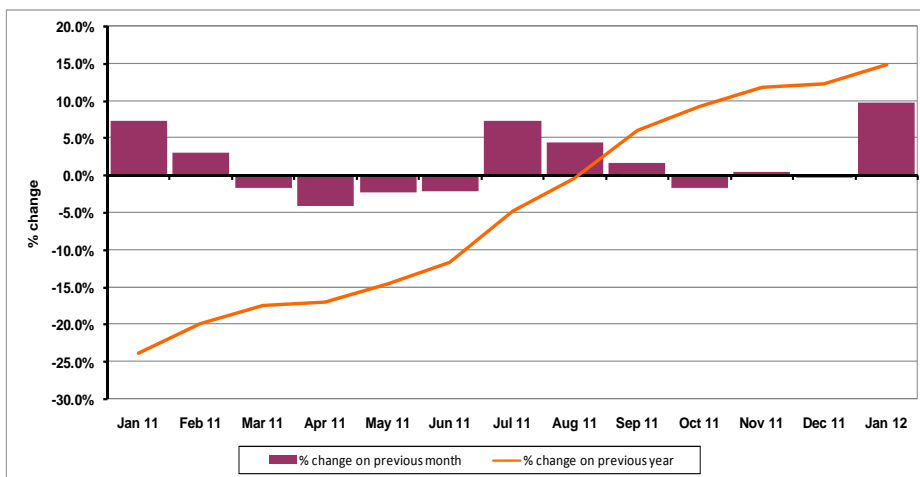
## PART 1: SUMMARY

**The claimant rate in Gloucestershire was 2.9% in January 2012.** This was an increase of 0.3% on the December 2011 figure. The UK and South West rate also increased to 4.1% and 2.9% respectively. Gloucestershire's rate was the same as the South West average of 2.9%, and 1.2% lower than the UK average of 4.1%.

**The claimant count in Gloucestershire in January 2012 increased by 949 people.** The amount of people claiming in January 2012 was 9.8% higher than the number in December 2011. This compares to a 7.5% increase in the South West and a 5.1% increase for the UK.

**The year on year claimant count in Gloucestershire has increased.** The count was 14.8% higher in January 2012 than at the same point in the previous year as shown in the graph below.

Gloucestershire claimants - Month on Month and Year on Year change: January 2011 to January 2012



Source: ONS Crown Copyright Reserved

Produced by:

**Strategic Needs Analysis Team**  
Strategy and Challenge  
Gloucestershire County Council  
February 2012

## DISTRICTS AT A GLANCE

At a glance unemployment information grouped by district. Includes:

**Claim count:** Total number of people claiming Job Seekers Allowance in January 2012

**Compared to last month:** How much larger/smaller November's claim count is compared to November, expressed as a %

**Claimant rate:** The % of working population claiming Job Seekers Allowance in January 2012

**Highest claiming ward:** The ward with the highest claim count in that district and the rate

### CHELTENHAM BOROUGH

Claim count:	2,469
Compared to last month:	+8.7
Claimant rate:	3.3%
Highest claiming ward	Hesters Way (6.9%)

### GLOUCESTER CITY

Claim count:	3,199
Compared to last month:	+9.4%
Claimant rate:	4.2%
Highest claiming ward	Westgate (8.3%)

### COTSWOLD DISTRICT

Claim count:	804
Compared to last month:	+10.4%
Claimant rate:	1.6%
Highest claiming ward	Cirencester Watermoor (4.1%)

### STROUD DISTRICT

Claim count:	1,507
Compared to last month:	+10.9%
Claimant rate:	2.2%
Highest claiming ward	Slade (5.8%)

### FOREST OF DEAN

Claim count:	1,502
Compared to last month:	+11.9%
Claimant rate:	2.9%
Highest claiming ward	Coleford Central (5.4%)

### TEWKESBURY BOROUGH

Claim count:	1,185
Compared to last month:	+8.3%
Claimant rate:	2.3%
Highest claiming ward	Tewkesbury Prior's Park (6.1%)

## YOUNG PEOPLE NOT IN EDUCATION, EMPLOYMENT OR TRAINING (NEET)

As at the end of January 2012 there were 741 young people aged 16-18 not in education, employment or training in Gloucestershire and this figure translates into an adjusted (\*) 16-18 NEET population of 5.0%.

## PART 2: UK, SW AND GLOUCESTERSHIRE INDICATORS

The unemployment situation in Gloucestershire compared to the South West and the UK.

### Claimant Rate

Figure 1: Claimant Rate for Gloucestershire, the South West and UK over the past year

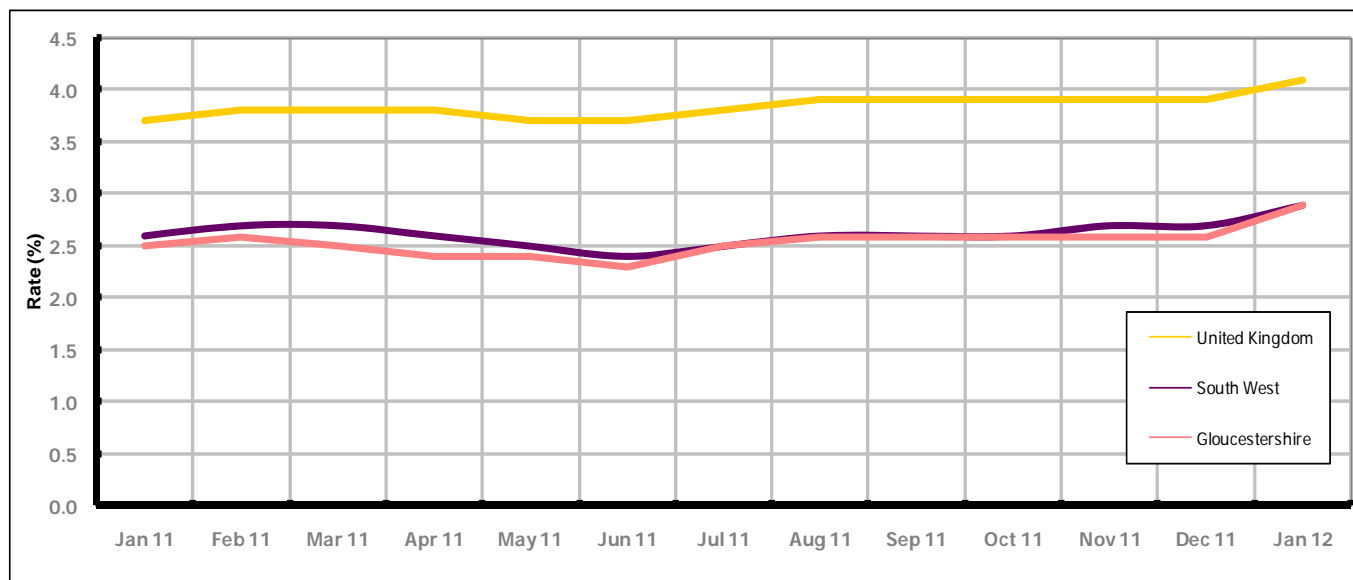


Figure 1 shows the claimant rate for Gloucestershire at 2.9% in January 2012. The rate has been lower or the same as the South West average over the past year and persistently lower by approximately 1.2% against the UK average during the same period. The January 2012 rate represents a 0.3% increase on December 2011.

### Claimant Count

Table 1: Analysis of UK, South West and Gloucestershire Claimant Counts

Area	Claimant Count in January 2012	% change on December 2011	Average % change over the last six months	Consecutive months increasing
UK	1,649,190	+5.1%	+0.8%	1
South West	96,083	+7.5%	+2.0%	2
Gloucestershire	10,666	+9.8%	+1.6%	0

Table 1 shows that in January 2012, the number of claimants in Gloucestershire was +9.8% higher than the number in December 2011.

The average change in claimants in Gloucestershire for the six months to January 2012 was +1.6%. This is 0.8% higher than the UK average and 0.4% lower than the South West average.

## PART 3: LOCAL AUTHORITY DISTRICT ANALYSIS

### Claimant Rate and Claimant Count

Figure 2: Claimant Rate (%) across Gloucestershire - January 2012

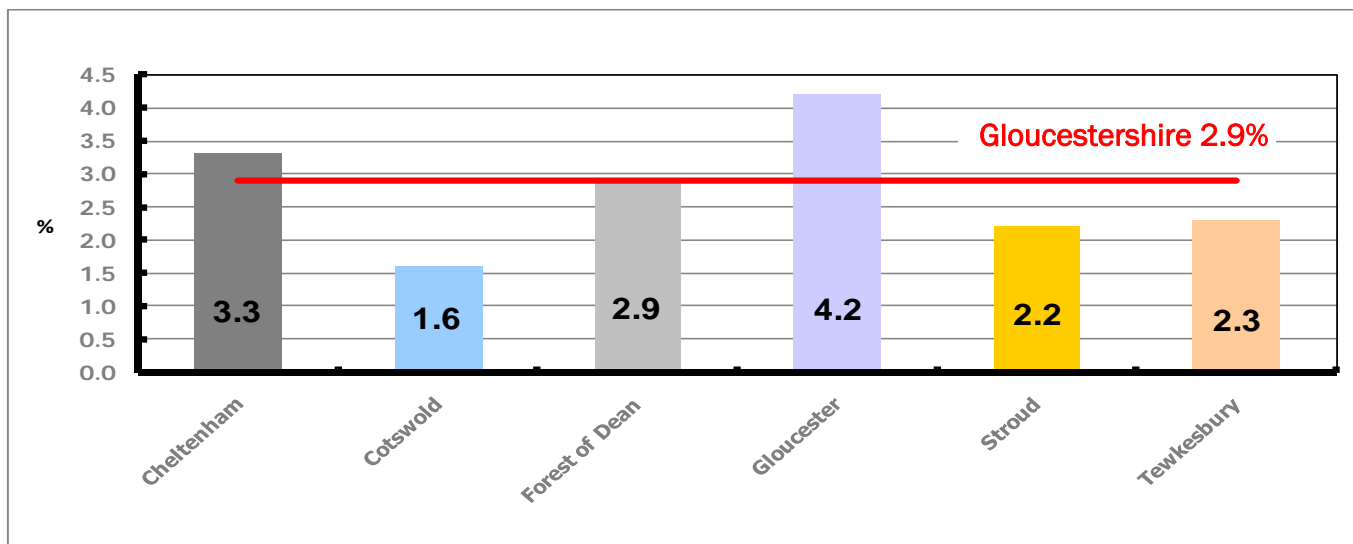


Figure 2 shows the claimant rate for January 2012 in Gloucestershire. Between December 2011 and January 2012 all districts experienced an increase.

Figure 3: Total claimants over the past year across Gloucestershire Districts

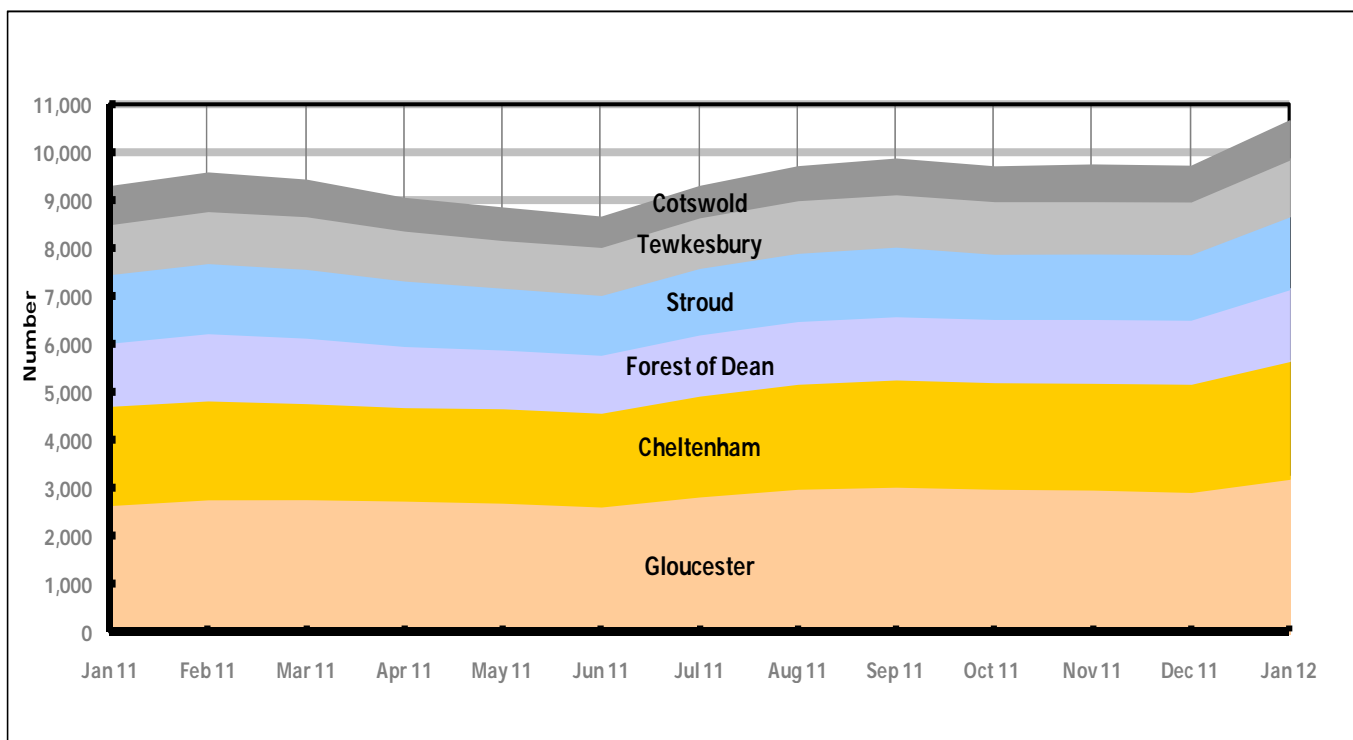


Figure 3 shows the overall claimant count by district over the past year. The number of claimants generally declined between January 2010 and June 2011. Since July 2011 the number of claimants have increased, with the exception of October and December when there was a decline.

Table 2: Analysis of Gloucestershire and District Claimant Counts

Total	Jan 12 Number	Jan 12 Rate	Dec 11 Number	Dec 11 Rate	Monthly change	% monthly change	Monthly change of rate
<b>Gloucestershire</b>	10,666	2.9	9,717	2.6	949	9.8%	0.3
Cheltenham	2,469	3.3	2,271	3.0	198	8.7%	0.3
Cotswold	804	1.6	728	1.4	76	10.4%	0.2
Forest of Dean	1,502	2.9	1,342	2.6	160	11.9%	0.3
Gloucester	3,199	4.2	2,923	3.8	276	9.4%	0.4
Stroud	1,507	2.2	1,359	2.0	148	10.9%	0.2
Tewkesbury	1,185	2.3	1,094	2.2	91	8.3%	0.1

Table 2 shows the change in the claimant count in January 2012 compared to December 2011. All districts experienced an increase in the number of claimants.

Table 3: Analysis of Male Gloucestershire and District Claimant Counts

Male	Jan 12 Number	Jan 12 Rate	Dec 11 Number	Dec 11 Rate	Monthly change	% monthly change	Monthly change of rate
<b>Gloucestershire</b>	7,185	3.9	6,547	3.5	638	9.7%	0.4
Cheltenham	1,692	4.5	1,561	4.1	131	8.4%	0.4
Cotswold	510	2.0	460	1.8	50	10.9%	0.2
Forest of Dean	1,022	4.0	908	3.5	114	12.6%	0.5
Gloucester	2,170	5.7	1,981	5.2	189	9.5%	0.5
Stroud	1,006	2.9	907	2.6	99	10.9%	0.3
Tewkesbury	785	3.2	730	2.9	55	7.5%	0.3

Table 3 shows the change in the male claimant count in January 2012 compared to December 2011. All districts experienced an increase in the number of male claimants.

Table 4: Analysis of Female Gloucestershire and District Claimant Counts

Female	Jan 12 Number	Jan 12 Rate	Dec 11 Number	Dec 11 Rate	Monthly change	% monthly change	Monthly change of rate
<b>Gloucestershire</b>	3,481	1.9	3,170	1.7	311	9.8%	0.2
Cheltenham	777	2.1	710	1.9	67	9.4%	0.2
Cotswold	294	1.2	268	1.0	26	9.7%	0.2
Forest of Dean	480	1.9	434	1.7	46	10.6%	0.2
Gloucester	1,029	2.7	942	2.5	87	9.2%	0.2
Stroud	501	1.4	452	1.3	49	10.8%	0.1
Tewkesbury	400	1.6	364	1.4	36	9.9%	0.2

Table 4 shows the change in the female claimant count in January 2012 compared to December 2011. All districts experienced an increase in the number of female claimants.

## PART 4: LOCAL AUTHORITY DISTRICT AND WARD ANALYSIS

This section covers the six districts and a comparison of their constituent wards.

### 4.1 Cheltenham Borough

#### Claimant Rate and Claimant Count

Figure 4: Cheltenham Borough claimant rate over the last year

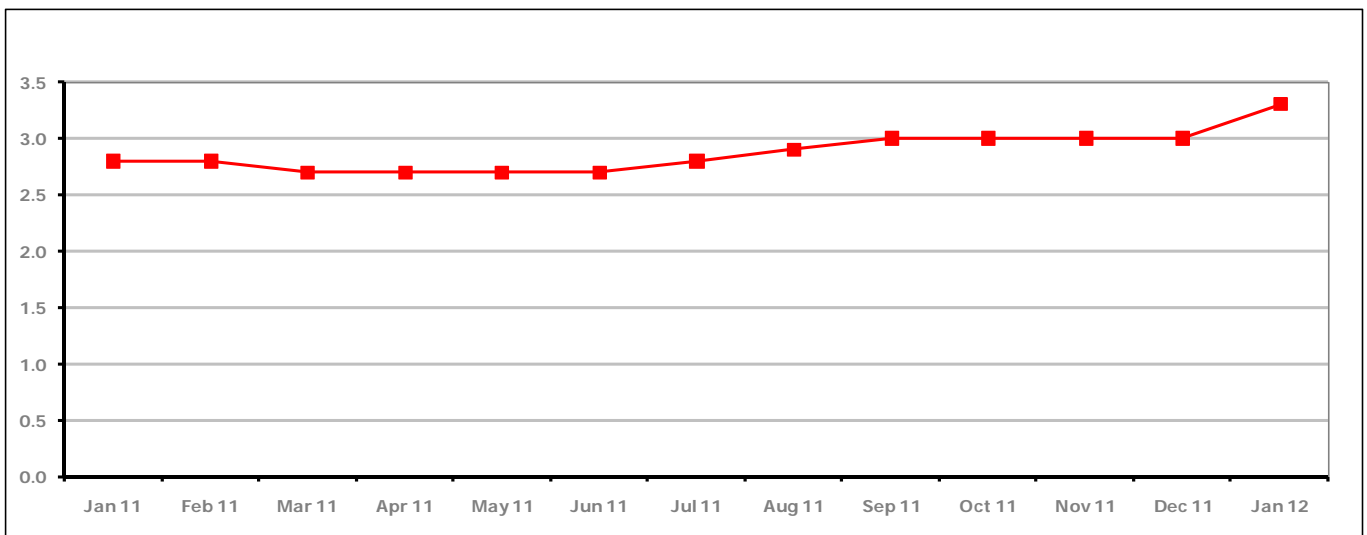


Figure 4 shows the claimant rate in Cheltenham increased in January 2012 to 3.3%.

Figure 5: Cheltenham Borough claimants - Month on Month and Year on Year change

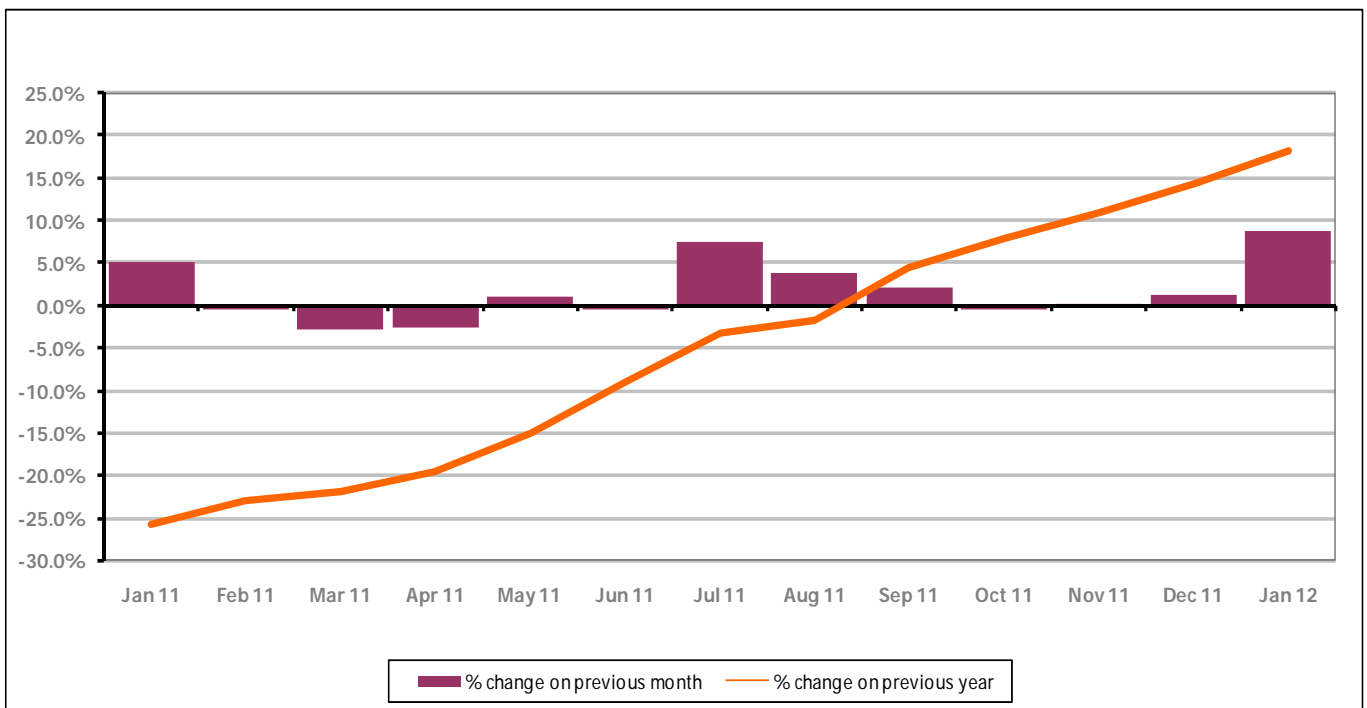


Figure 5 shows the claimant count increased by +8.7% since last month. The change on the previous year has increased in January 2012 compared to December 2011 to +18.3%.

## PART 4: LOCAL AUTHORITY DISTRICT AND WARD ANALYSIS

## 4.1 Cheltenham Borough continued...

Figure 6: Claimant rates across Cheltenham Borough wards - January 2012

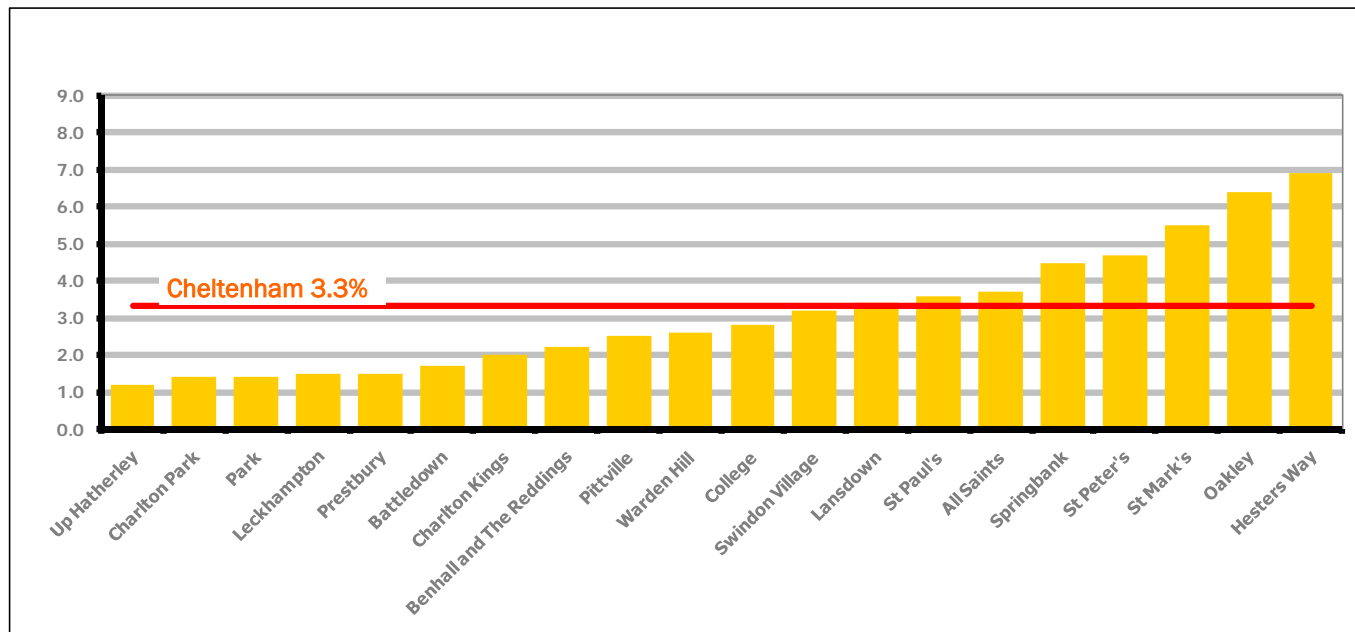


Figure 6 shows the claimant rates for Cheltenham Borough wards. The red line represents the average claimant rate across the Borough of 3.3%. Eight wards lie above the average.

Table 5: Analysis of Claimant Count at Cheltenham Borough ward level - January 2012

District	Ward	Rate	Rank*
Cheltenham	Up Hatherley	1.2	22
Cheltenham	Charlton Park	1.4	34
Cheltenham	Park	1.4	34
Cheltenham	Leckhampton	1.5	42
Cheltenham	Prestbury	1.5	42
Cheltenham	Battledown	1.7	55
Cheltenham	Charlton Kings	2.0	72
Cheltenham	Benhall and The Reddings	2.2	80
Cheltenham	Pittville	2.5	89
Cheltenham	Warden Hill	2.6	93
Cheltenham	College	2.8	98
Cheltenham	Swindon Village	3.2	110
Cheltenham	Lansdown	3.4	112
Cheltenham	St Paul's	3.6	119
Cheltenham	All Saints	3.7	120
Cheltenham	Springbank	4.5	125
Cheltenham	St Peter's	4.7	126
Cheltenham	St Mark's	5.5	133
Cheltenham	Oakley	6.4	138
Cheltenham	Hesters Way	6.9	140

bottom 10% of county  
 first quartile of county  
 second quartile of county  
 third quartile of county  
 fourth quartile of county  
 highest 10% of county

\* 1 = "best" and 142 = "worst"

Table 5 shows overall claimant rates for Cheltenham Borough wards and their position relative to all wards in Gloucestershire.

## PART 4: LOCAL AUTHORITY DISTRICT AND WARD ANALYSIS

## 4.2 Cotswold District

## Claimant Rate and Claimant Count

Figure 7: Cotswold District claimant rate over the last year

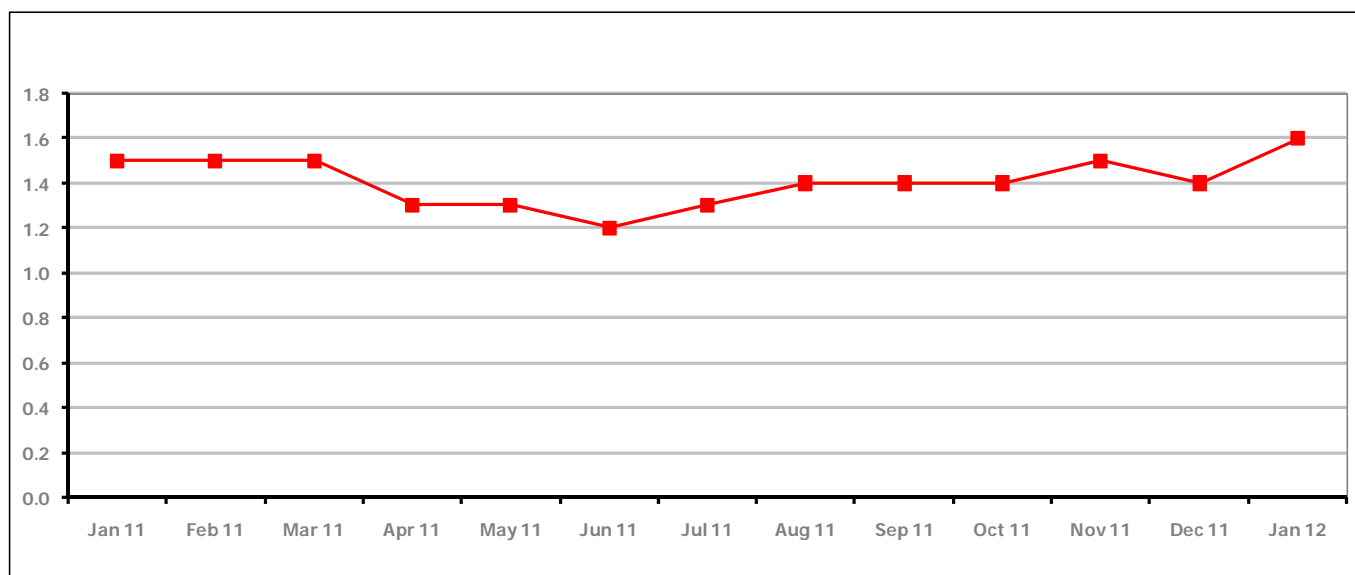


Figure 7 shows the claimant rate in Cotswold District increased in January 2012 to 1.6%.

Figure 8: Cotswold District claimants - Month on Month and Year on Year change

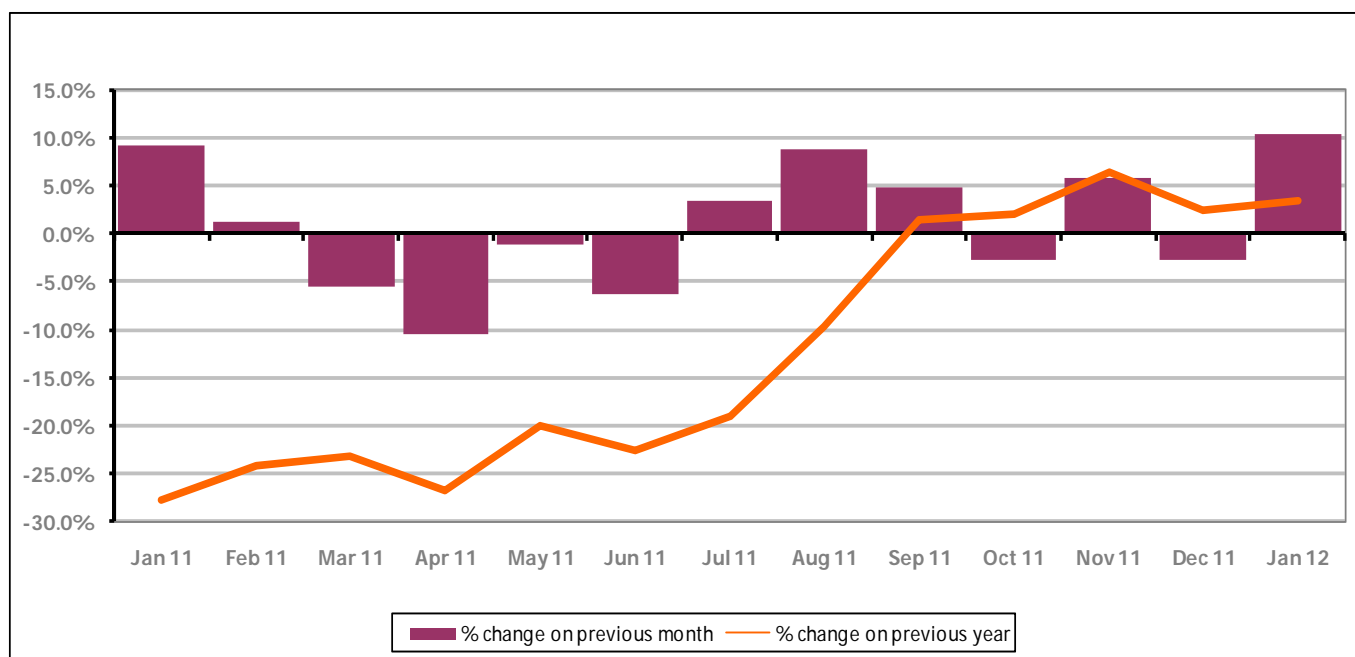


Figure 8 shows the claimant count increased by +10.4% since December 2011. The change on the previous year has increased from December 2011 to January 2012 to +3.5%.



## PART 4: LOCAL AUTHORITY DISTRICT AND WARD ANALYSIS

## 4.2 Cotswold District continued...

Figure 9: Claimant rates across Cotswold District wards - January 2012

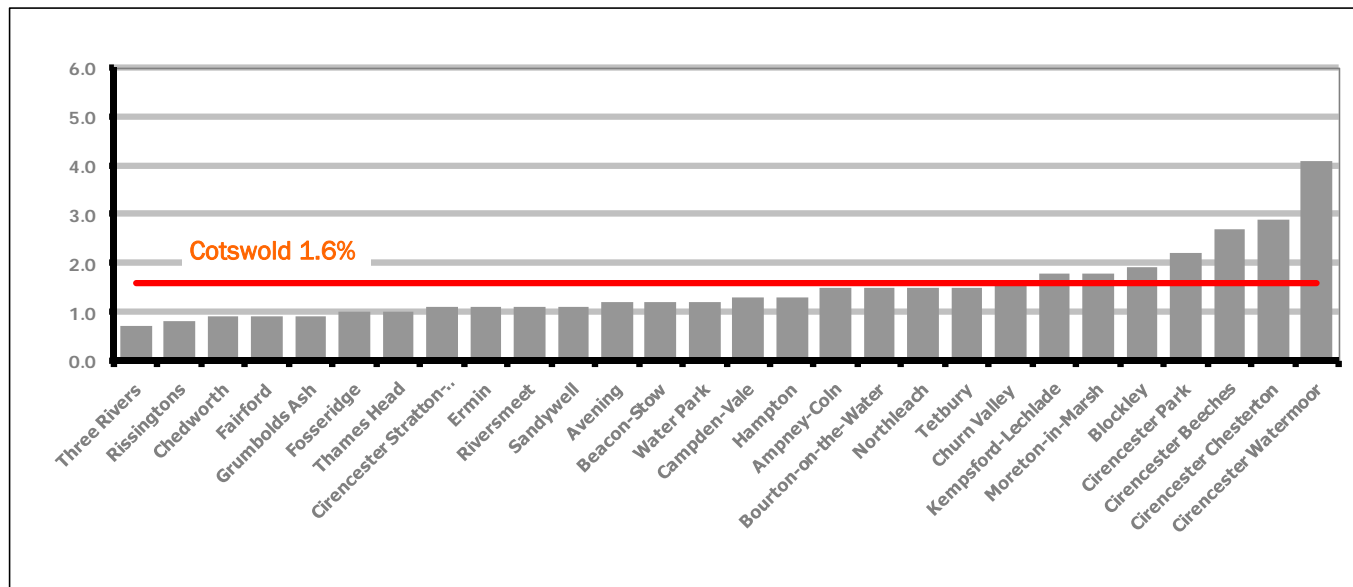
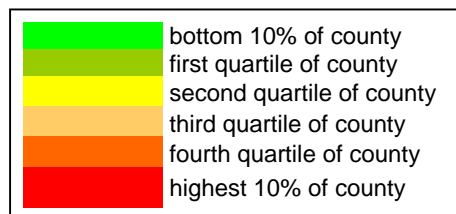


Figure 9 shows the claimant rates for Cotswold District wards. The red line represents the average claimant rate across the District of 1.6%. Seven wards lie above the average.

Table 6: Analysis of Claimant Count at Cotswold District ward level - January 2012

District	Ward	Rate	Rank*
Cotswolds	Three Rivers	0.7	2
Cotswolds	Rissingtons	0.8	4
Cotswolds	Chedworth	0.9	8
Cotswolds	Fairford	0.9	8
Cotswolds	Grumbolds Ash	0.9	8
Cotswolds	Fosseridge	1.0	11
Cotswolds	Thames Head	1.0	11
Cotswolds	Cirencester Stratton-Whiteway	1.1	17
Cotswolds	Ermin	1.1	17
Cotswolds	Riversmeet	1.1	17
Cotswolds	Sandywell	1.1	17
Cotswolds	Avening	1.2	22
Cotswolds	Beacon-Stow	1.2	22
Cotswolds	Water Park	1.2	22
Cotswolds	Campden-Vale	1.3	30
Cotswolds	Hampton	1.3	30
Cotswolds	Ampney-Coln	1.5	42
Cotswolds	Bourton-on-the-Water	1.5	42
Cotswolds	Northleach	1.5	42
Cotswolds	Tetbury	1.5	42
Cotswolds	Churn Valley	1.6	51
Cotswolds	Kempsford-Lechlade	1.8	59
Cotswolds	Moreton-in-Marsh	1.8	59
Cotswolds	Blockley	1.9	65
Cotswolds	Cirencester Park	2.2	80
Cotswolds	Cirencester Beeches	2.7	94
Cotswolds	Cirencester Chesterton	2.9	102
Cotswolds	Cirencester Watermoor	4.1	123



\* 1 = "best" and 142 = "worst"

Table 6 shows overall claimant rates for Cotswold District wards and their position relative to all wards in Gloucestershire.

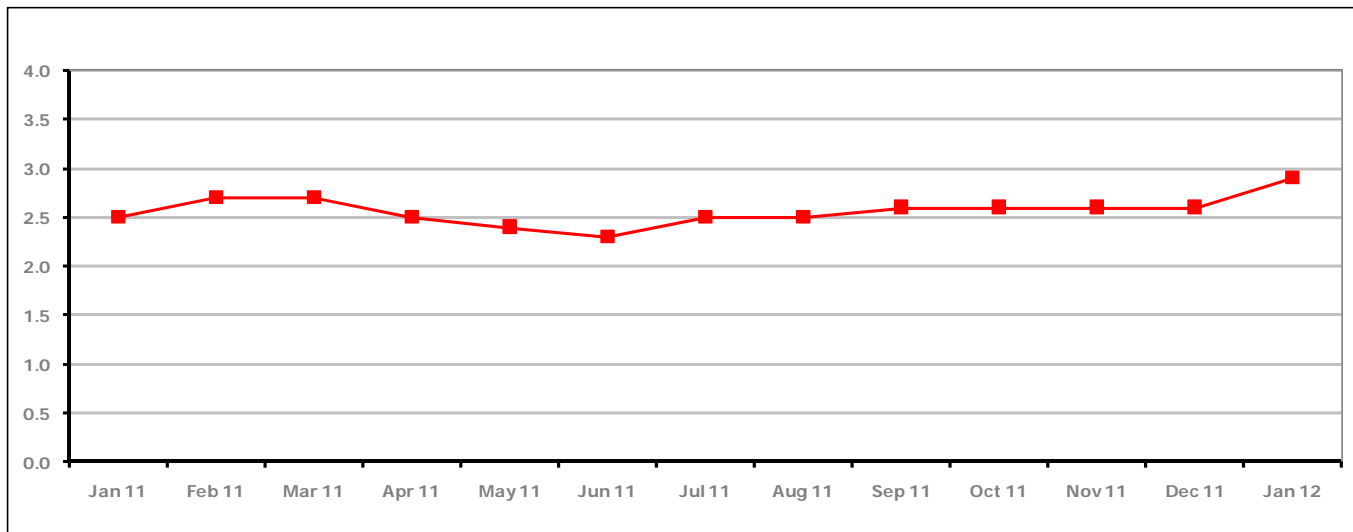
**PART 4: LOCAL AUTHORITY DISTRICT AND WARD ANALYSIS****4.3 Forest of Dean District****Claimant Rate and Claimant Count***Figure 10: Forest of Dean District claimant rate over the last year*

Figure 10 shows the claimant rate in the Forest of Dean increase in January 2012 to 2.9%.

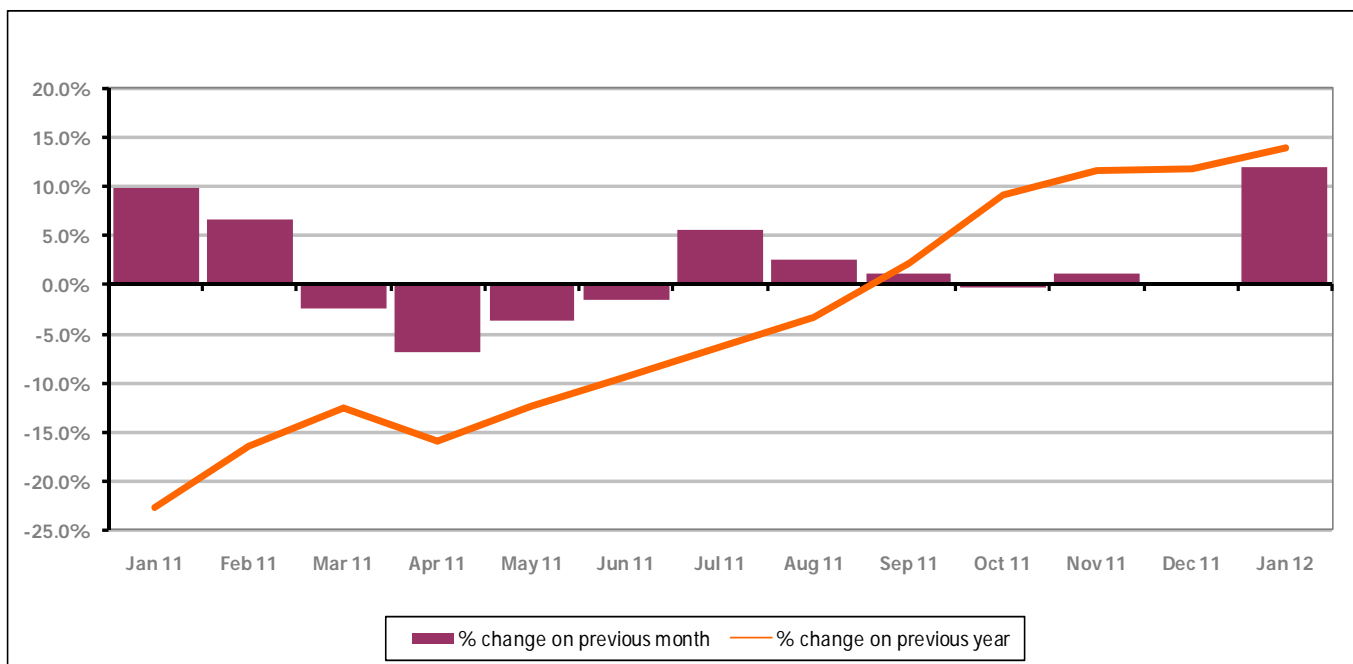
*Figure 11: Forest of Dean District claimants - Month on Month and Year on Year change*

Figure 11 shows the claimant count increased by +11.9% since December 2011. The change on the previous year increased between December 2011 and January 2012 to +14.0%.

## PART 4: LOCAL AUTHORITY DISTRICT AND WARD ANALYSIS

## 4.3 Forest of Dean District continued...

Figure 12: Claimant rates across Forest of Dean District wards - January 2012

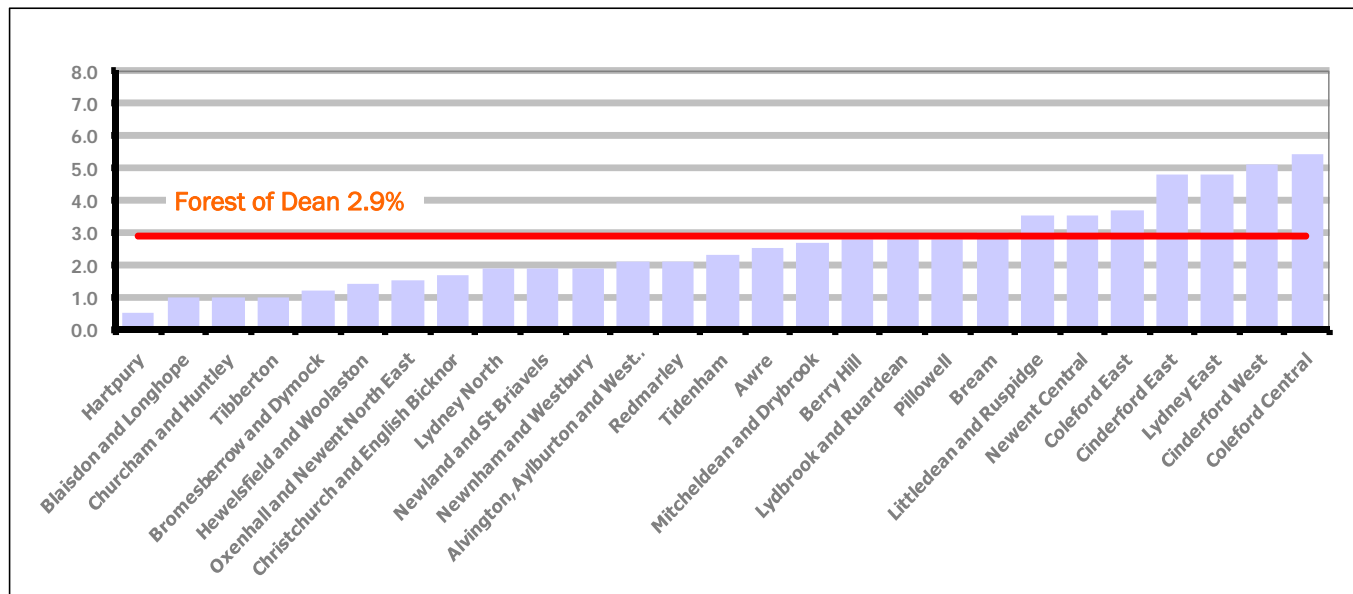
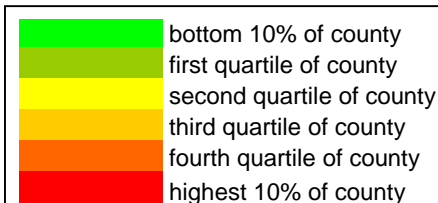


Figure 12 shows the claimant rates for Forest of Dean District wards. The red line represents the average claimant rate across the District of 2.9 %. Eight wards lie above the average.

Table 7: Analysis of Claimant Count at Forest of Dean District ward level - January 2012

District	Ward	Rate	Rank*
Forest	Hartpur	0.5	1
Forest	Blaisdon and Longhope	1.0	11
Forest	Churcham and Huntley	1.0	11
Forest	Tibberton	1.0	11
Forest	Bromesberrow and Dymock	1.2	22
Forest	Hewelsfield and Woolaston	1.4	34
Forest	Oxenhall and Newent North East	1.5	42
Forest	Christchurch and English Bicknor	1.7	55
Forest	Lydney North	1.9	65
Forest	Newland and St Briavels	1.9	65
Forest	Newnham and Westbury	1.9	65
Forest	Alvington, Aylburton and West Lydney	2.1	76
Forest	Redmarley	2.1	76
Forest	Tidenham	2.3	85
Forest	Awre	2.5	89
Forest	Mitcheldean and Drybrook	2.7	94
Forest	Berry Hill	2.8	98
Forest	Lydbrook and Ruardean	2.8	98
Forest	Pillowell	2.8	98
Forest	Bream	3.0	105
Forest	Littledean and Ruspidge	3.5	115
Forest	Newent Central	3.5	115
Forest	Coleford East	3.7	120
Forest	Cinderford East	4.8	127
Forest	Lydney East	4.8	127
Forest	Cinderford West	5.1	129
Forest	Coleford Central	5.4	131



\* 1 = "best" and 142 = "worst"

Table 7 shows overall claimant rates for the Forest of Dean District wards and their position relative to all wards in Gloucestershire.

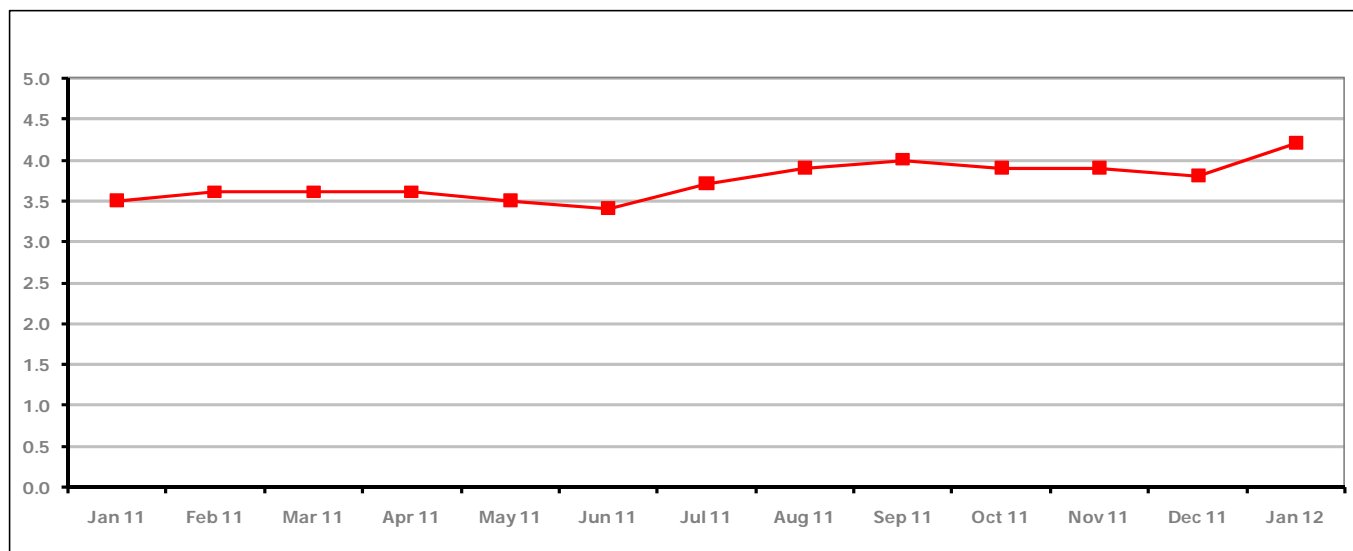
**PART 4: LOCAL AUTHORITY DISTRICT AND WARD ANALYSIS****4.4 Gloucester City****Claimant Rate and Claimant Count***Figure 13: Gloucester City claimant rate over the last year*

Figure 13 shows the claimant rate for Gloucester City increased in January 2012 to 4.2%.

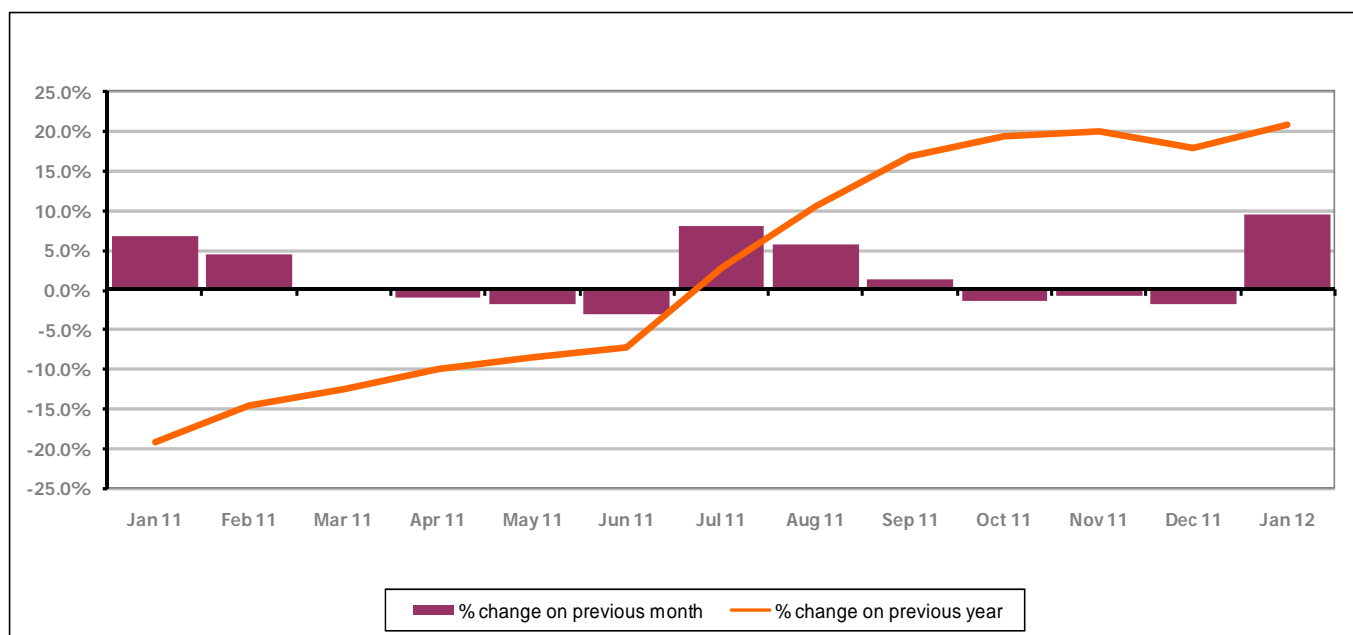
*Figure 14: Gloucester City claimants - Month on Month and Year on Year change*

Figure 14 shows the monthly claimant count increased by +9.4% since December 2011. The change on the previous year has increased between December 2011 and January 2012 to +20.8%.

## PART 4: LOCAL AUTHORITY DISTRICT AND WARD ANALYSIS

## 4.4 Gloucester City continued...

Figure 15: Claimant rates across Gloucester City wards - January 2012

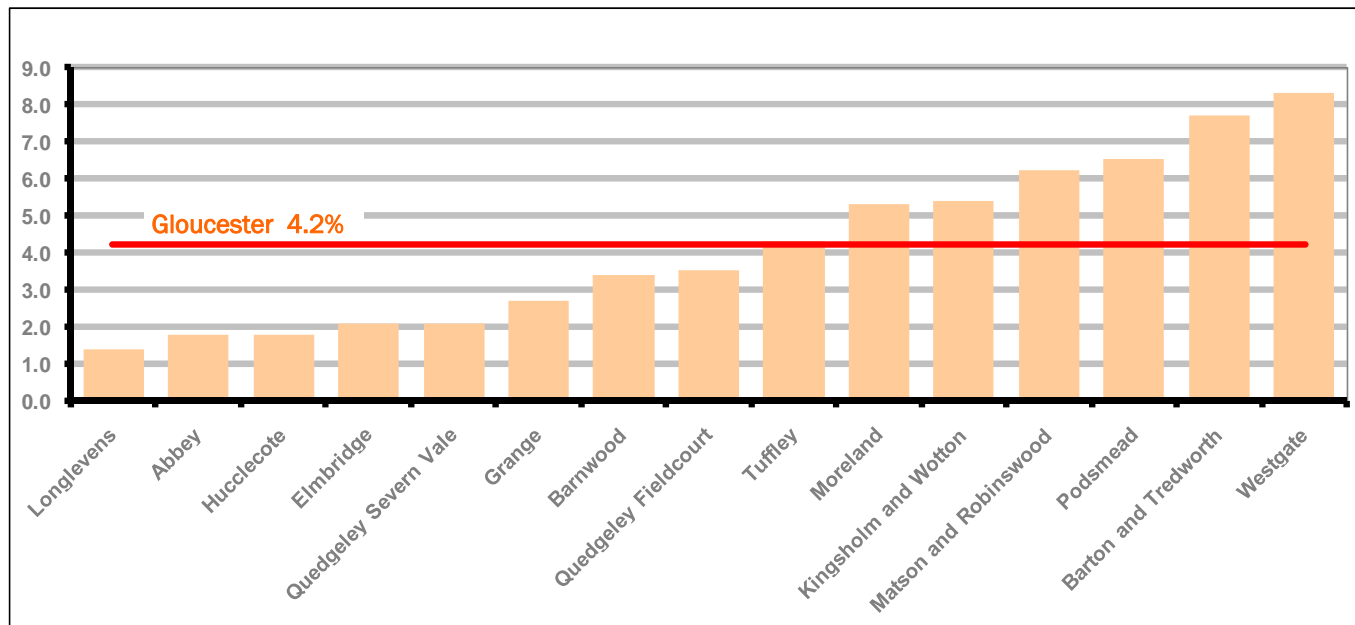
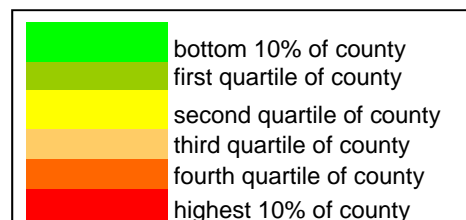


Figure 15 shows the claimant rates for Gloucester City district wards. The red line represents the average claimant rate across the City of 4.2%. Seven wards lie above the average.

Table 8: Analysis of Claimant Count at Gloucester City ward level - January 2012

District	Ward	Rate	Rank*
Gloucester	Longlevens	1.4	34
Gloucester	Abbey	1.8	59
Gloucester	Hucclecote	1.8	59
Gloucester	Elmbridge	2.1	76
Gloucester	Quedgeley Severn Vale	2.1	76
Gloucester	Grange	2.7	94
Gloucester	Barnwood	3.4	112
Gloucester	Quedgeley Fieldcourt	3.5	115
Gloucester	Tuffley	4.3	124
Gloucester	Moreland	5.3	130
Gloucester	Kingsholm and Wotton	5.4	131
Gloucester	Matson and Robinswood	6.2	137
Gloucester	Podsmead	6.5	139
Gloucester	Barton and Tredworth	7.7	141
Gloucester	Westgate	8.3	142



\* 1 = "best" and 142 = "worst"

Table 8 shows overall claimant rates for Gloucester City wards and their position relative to all wards in Gloucestershire.

## PART 4: LOCAL AUTHORITY DISTRICT AND WARD ANALYSIS

## 4.5 Stroud District

## Claimant Rate and Claimant Count

Figure 16: Stroud District claimant rate over the last year

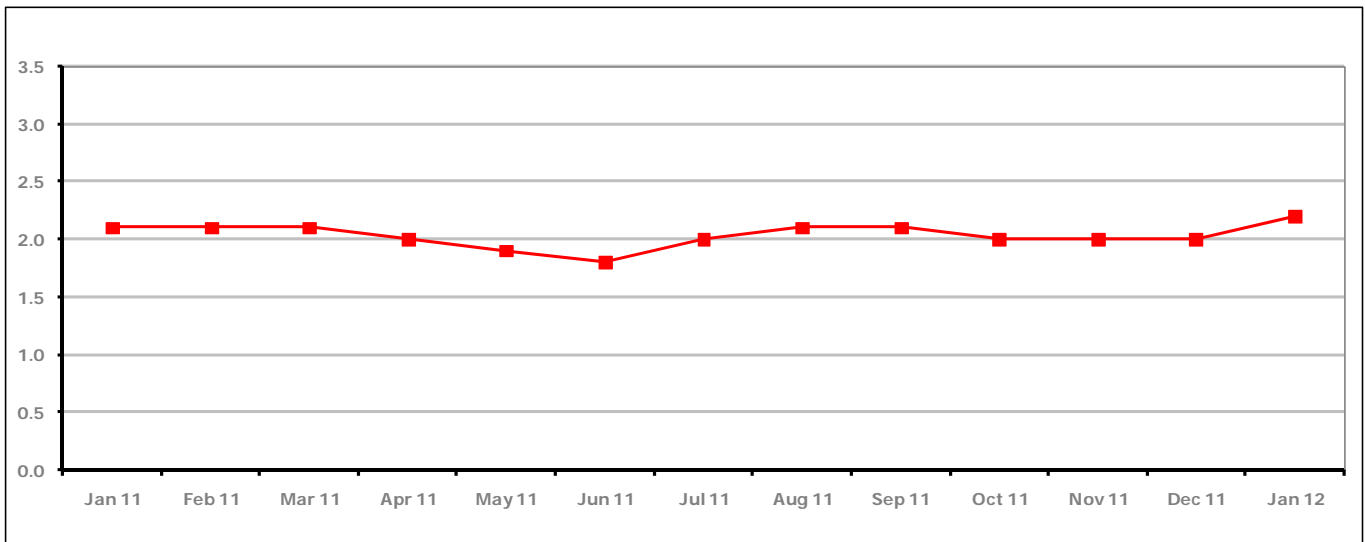


Figure 16 shows the claimant rate for Stroud District increased in January 2012 to 2.2%.

Figure 17: Stroud District claimants - Month on Month and Year on Year change

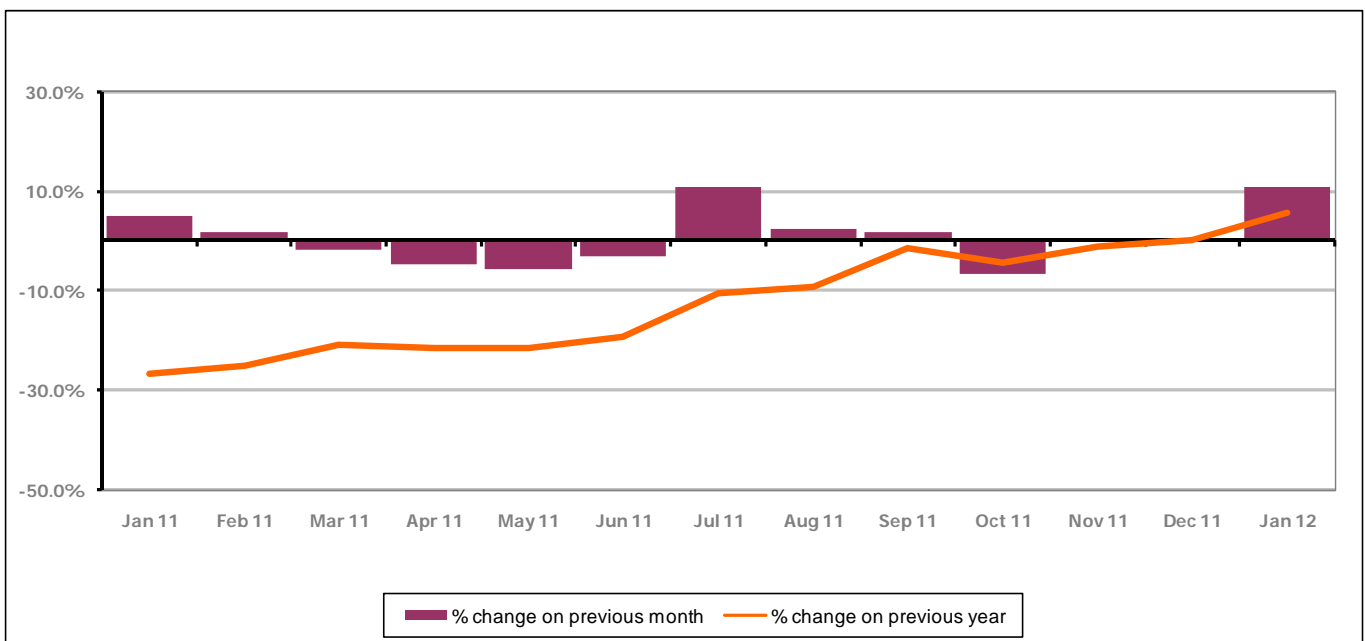


Figure 17 shows the monthly claimant count increased by +10.9% since December 2011. The change on the previous year has increased between December 2011 and January 2012 to +5.6%.

## PART 4: LOCAL AUTHORITY AND DISTRICT ANALYSIS

## 4.5 Stroud District continued...

Figure 18: Claimant rates across Stroud District wards - January 2012

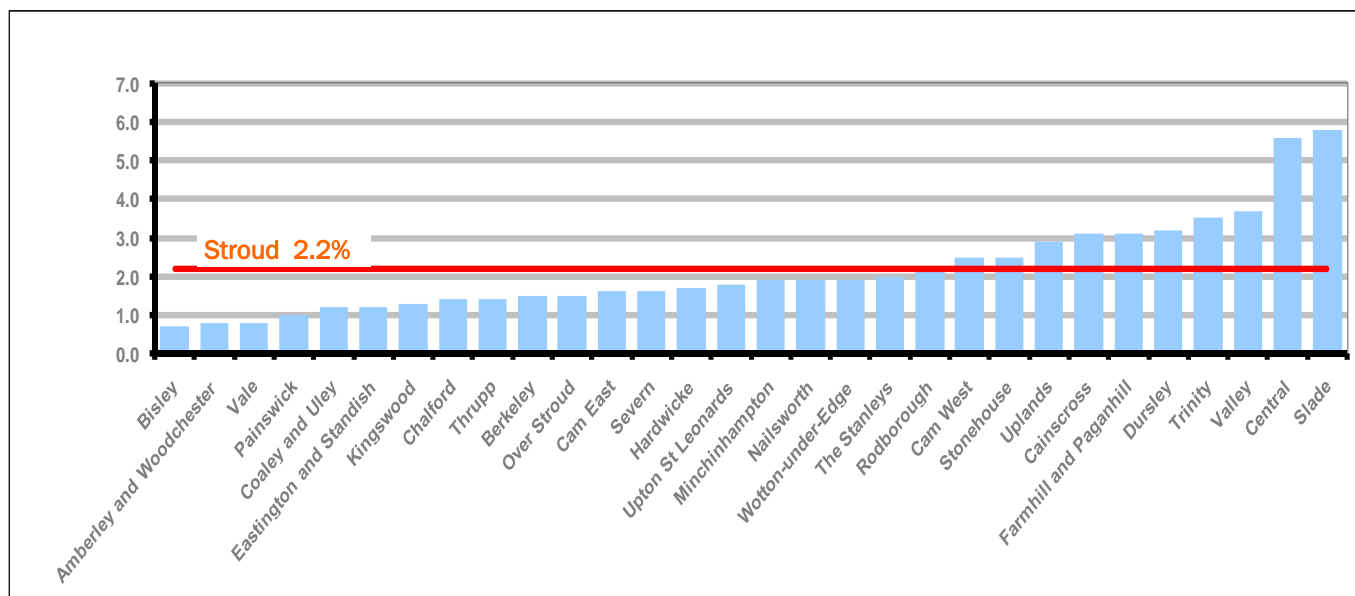
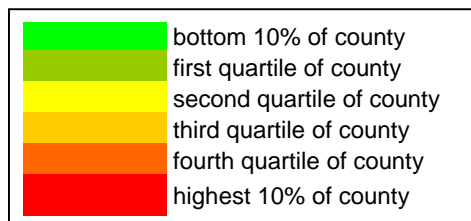


Figure 18 shows the claimant rates in Stroud District wards. The red line represents the average claimant rate across the District of 2.2%. Ten wards are above the average.

Table 9: Analysis of Claimant Count at Stroud District ward level - January 2012

District	Ward	Rate	Rank*
Stroud	Bisley	0.7	2
Stroud	Amberley and Woodchester	0.8	4
Stroud	Vale	0.8	4
Stroud	Painswick	1.0	11
Stroud	Coaley and Uley	1.2	22
Stroud	Eastington and Standish	1.2	22
Stroud	Kingswood	1.3	30
Stroud	Chalford	1.4	34
Stroud	Thrupp	1.4	34
Stroud	Berkeley	1.5	42
Stroud	Over Stroud	1.5	42
Stroud	Cam East	1.6	51
Stroud	Severn	1.6	51
Stroud	Hardwicke	1.7	55
Stroud	Upton St Leonards	1.8	59
Stroud	Minchinhampton	1.9	65
Stroud	Nailsworth	1.9	65
Stroud	Wotton-under-Edge	1.9	65
Stroud	The Stanleys	2.0	72
Stroud	Rodborough	2.2	80
Stroud	Cam West	2.5	89
Stroud	Stonehouse	2.5	89
Stroud	Uplands	2.9	102
Stroud	Cainscross	3.1	108
Stroud	Farmhill and Paganhill	3.1	108
Stroud	Dursley	3.2	110
Stroud	Trinity	3.5	115
Stroud	Valley	3.7	120
Stroud	Central	5.6	134
Stroud	Slade	5.8	135



\* 1 = "best" and 142 = "worst"

Table 9 shows overall claimant rates for Stroud District wards and their position relative to all wards in Gloucestershire.

## PART 4: LOCAL AUTHORITY DISTRICT AND WARD ANALYSIS

## 4.6 Tewkesbury District

## Claimant Rate and Claimant Count

Figure 19: Tewkesbury District claimant rate over the last year

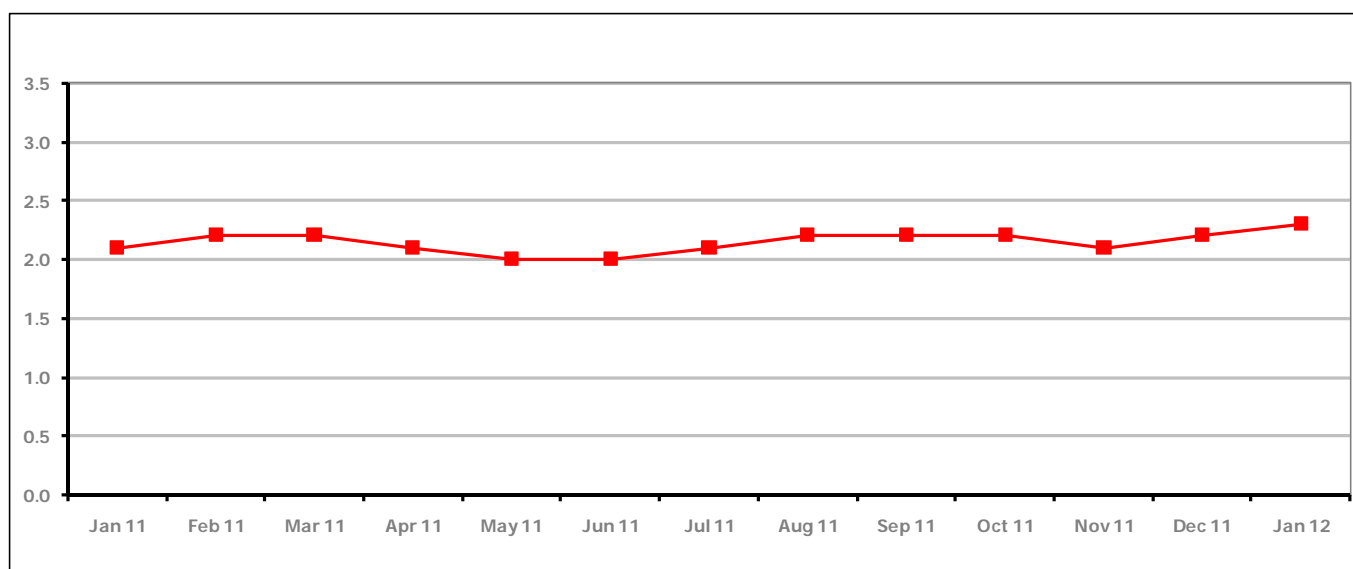


Figure 19 shows the claimant rate for Tewkesbury District increased in January 2012 to 2.3%.

Figure 20: Tewkesbury District claimants - Month on Month and Year on Year change

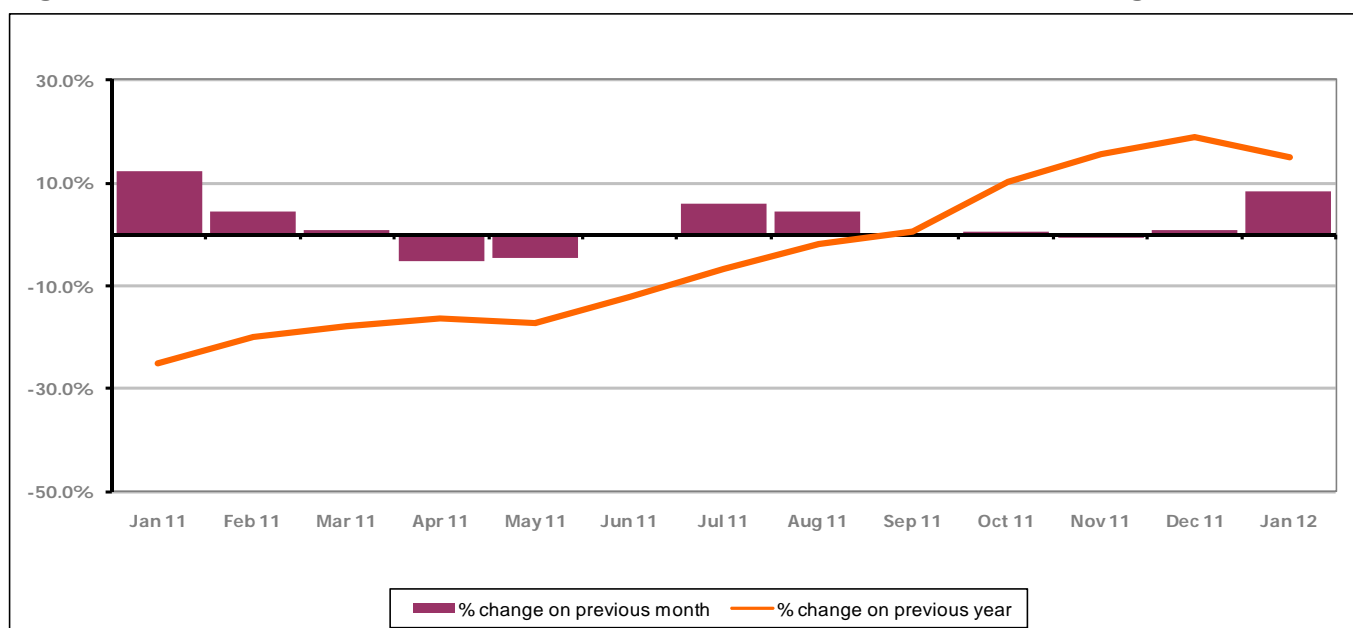


Figure 20 shows that the monthly claimant count increased in January 2012 by +8.3%. The change on the previous year increased between December 2011 and January 2012 to +14.7%.



## PART 4: LOCAL AUTHORITY AND DISTRICT ANALYSIS

## 4.6 Tewkesbury District continued...

Figure 21: Claimant rates across Tewkesbury District wards - January 2012

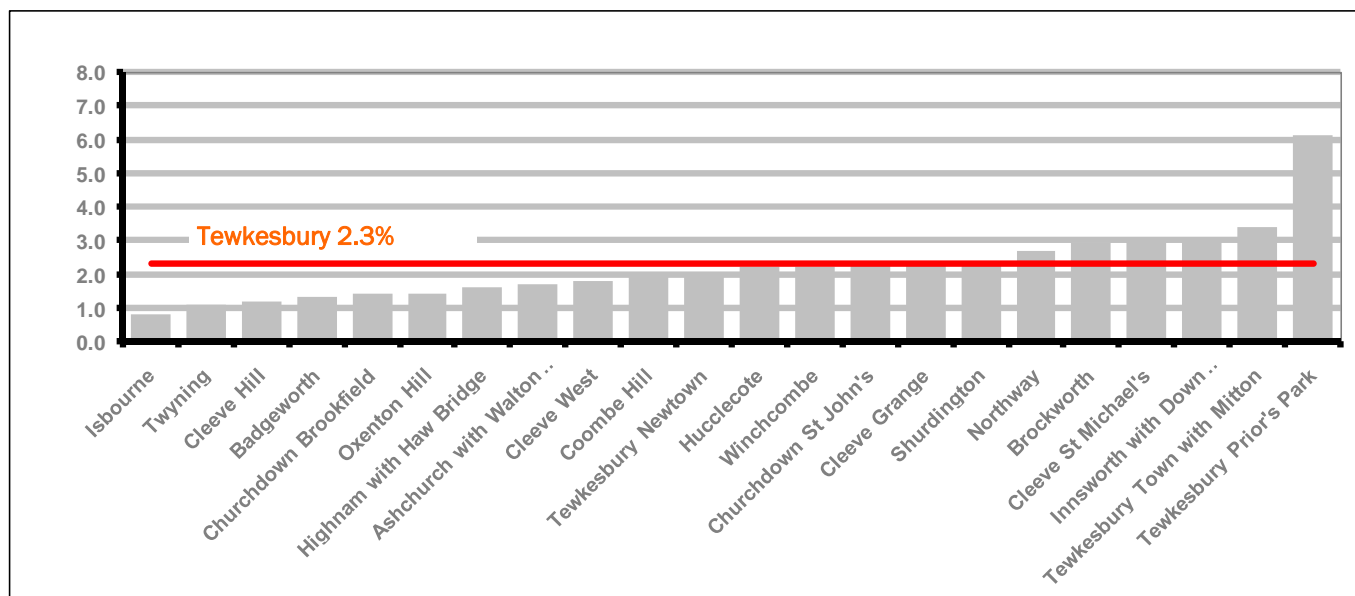
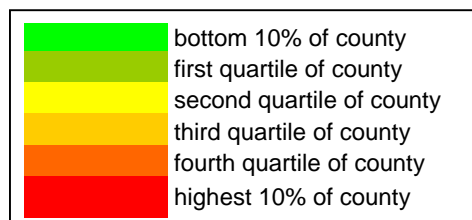


Figure 21 shows the claimant rates in Tewkesbury District wards. The red line represents the average claimant rate across the District of 2.3% and six wards are above the average.

Table 10: Analysis of Claimant Count at Tewkesbury District level - January 2012

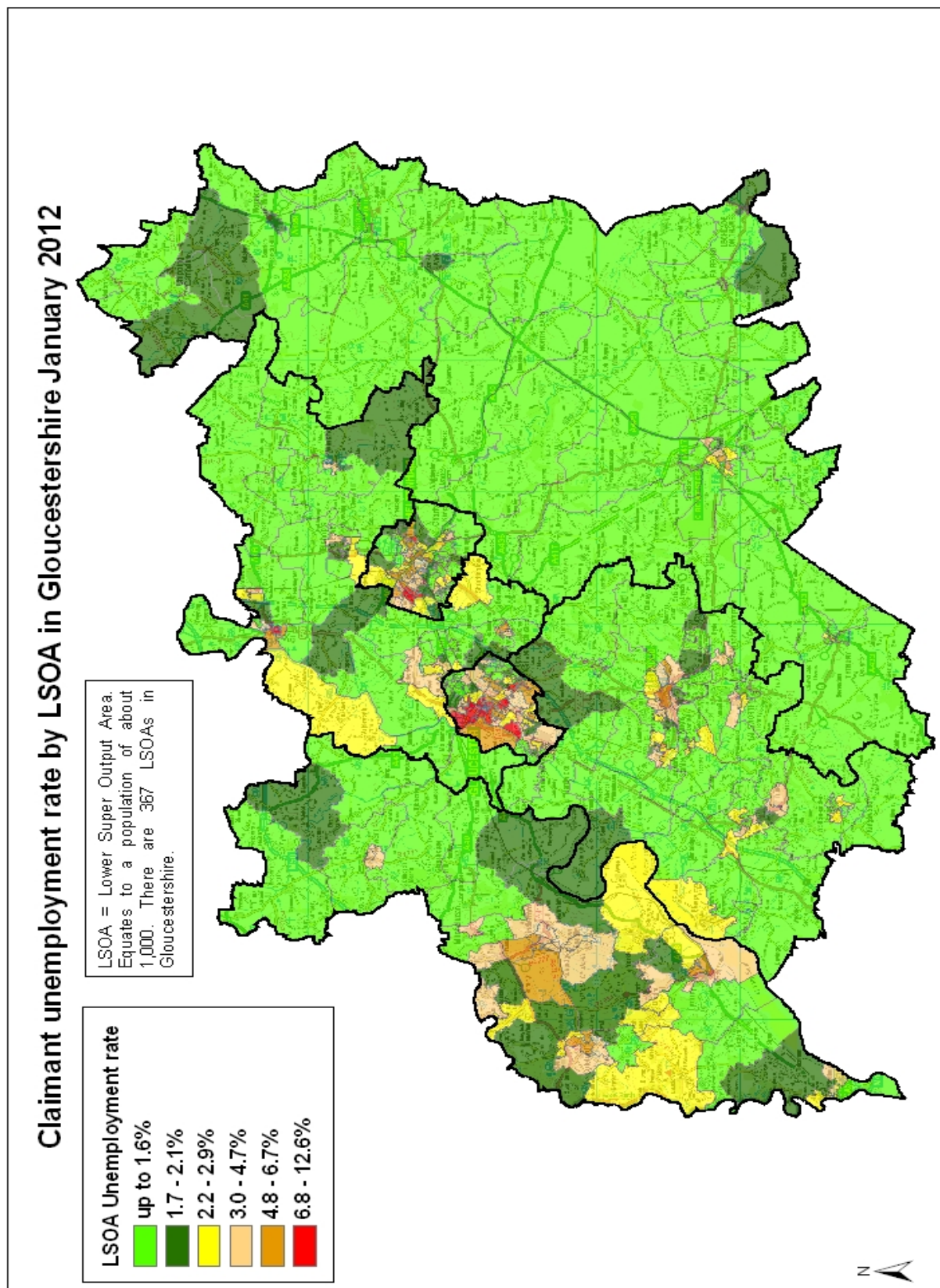
District	Ward	Rate	Rank*
Tewkesbury	Isbourne	0.8	4
Tewkesbury	Twynning	1.1	17
Tewkesbury	Cleeve Hill	1.2	22
Tewkesbury	Badgeworth	1.3	30
Tewkesbury	Churchdown Brookfield	1.4	34
Tewkesbury	Oxenton Hill	1.4	34
Tewkesbury	Highnam with Haw Bridge	1.6	51
Tewkesbury	Ashchurch with Walton Cardiff	1.7	55
Tewkesbury	Cleeve West	1.8	59
Tewkesbury	Coombe Hill	2.0	72
Tewkesbury	Tewkesbury Newtown	2.0	72
Tewkesbury	Hucclecote	2.2	80
Tewkesbury	Winchcombe	2.2	80
Tewkesbury	Churchdown St John's	2.3	85
Tewkesbury	Cleeve Grange	2.3	85
Tewkesbury	Shurdington	2.3	85
Tewkesbury	Northway	2.7	94
Tewkesbury	Brockworth	2.9	102
Tewkesbury	Cleeve St Michael's	3.0	105
Tewkesbury	Innsworth with Down Hatherley	3.0	105
Tewkesbury	Tewkesbury Town with Mitton	3.4	112
Tewkesbury	Tewkesbury Prior's Park	6.1	136



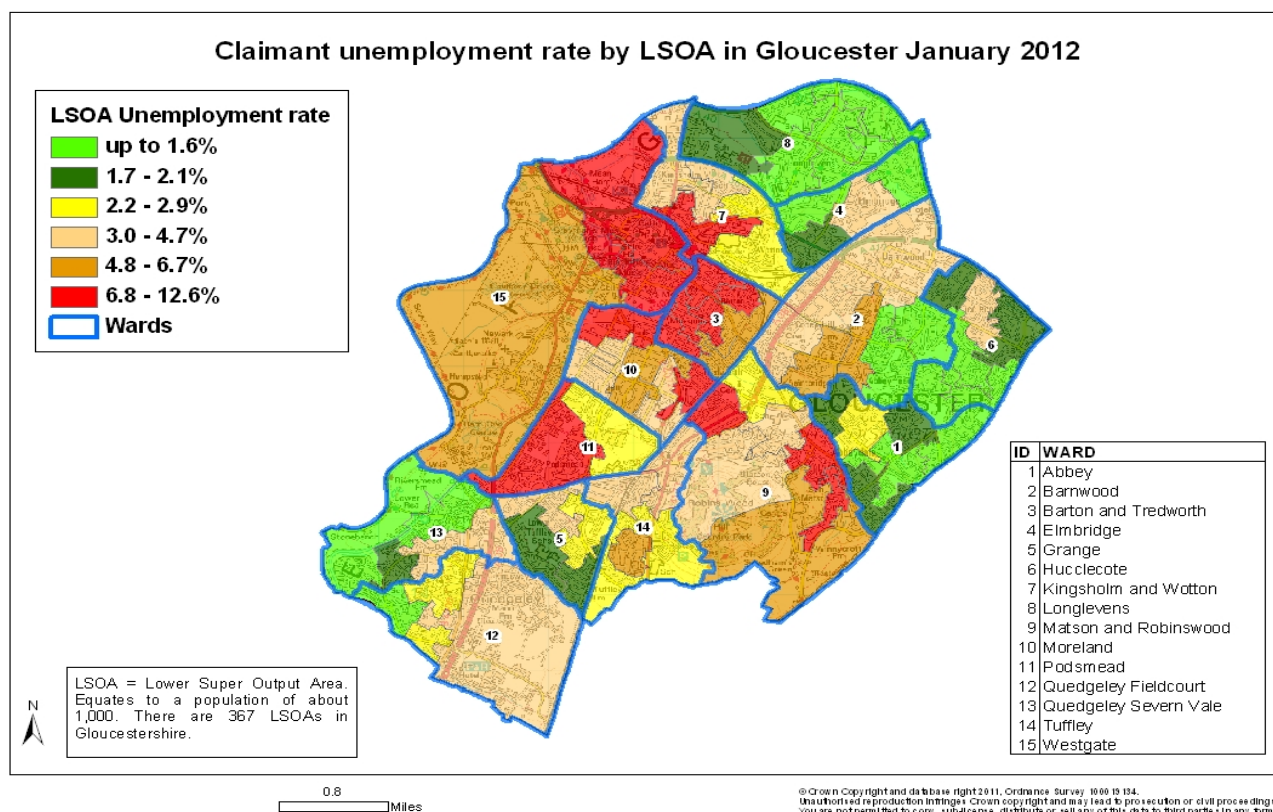
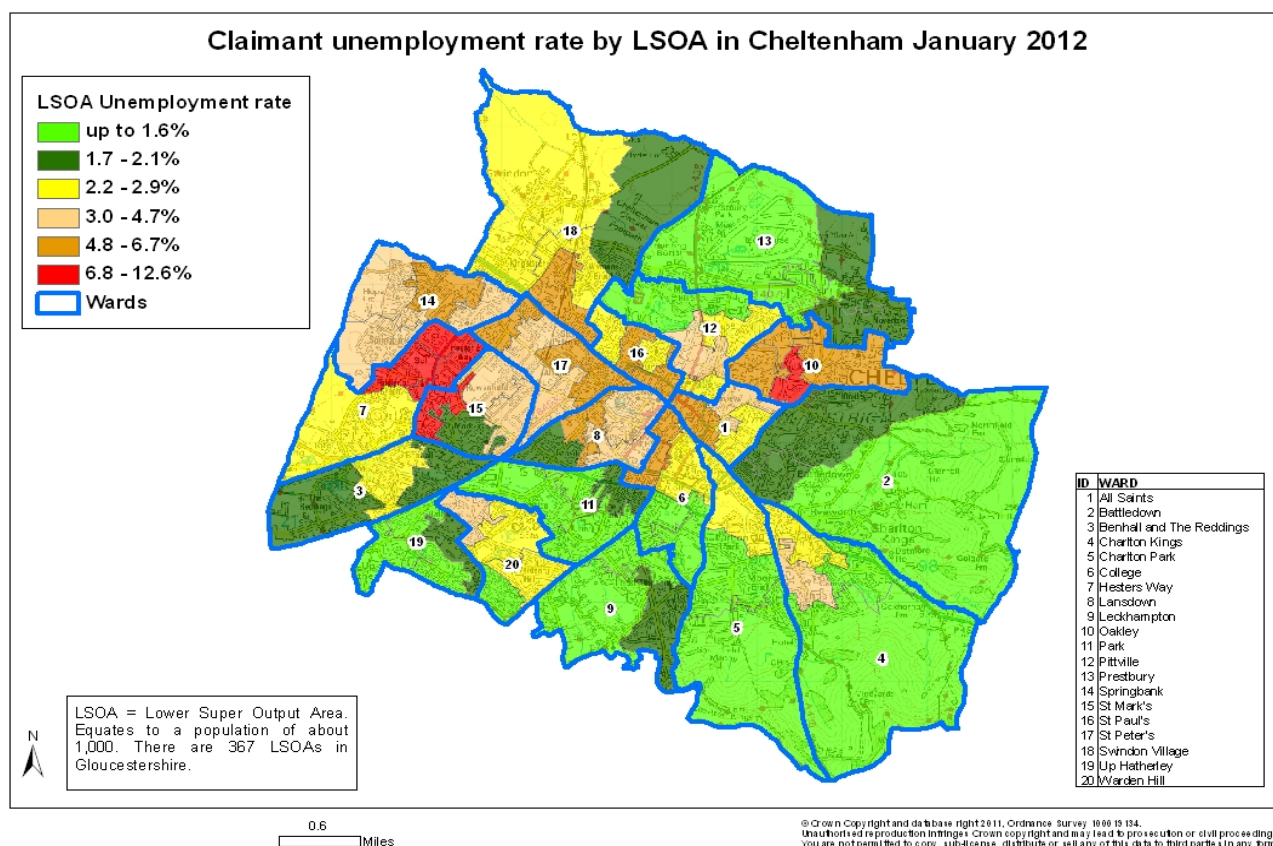
\* 1 = "best" and 142 = "worst"

Table 10 shows overall claimant rates for Tewkesbury District wards and their position relative to all wards in Gloucestershire.

## PART 5: MAP SHOWING DISTRIBUTION OF CLAIMANT RATE ACROSS GLOUCESTERSHIRE



## PART 5: MAP SHOWING DISTRIBUTION OF CLAIMANT RATE ACROSS GLOUCESTERSHIRE





## PART 6: YOUNG PEOPLE NOT IN EDUCATION, EMPLOYMENT OR TRAINING (NEET) IN GLOUCESTERSHIRE

Data provided by Prospects, the Connexions service in Gloucestershire on the situation of young people (16-18) in Gloucestershire who are not in education, employment or formal training.

Connexions Gloucestershire is required to report performance with the 16-18 age range against nationally defined criteria for counting the NEET group. The NEET group includes young people actively seeking education, employment or training as well as those young people who are either not yet ready or who are unable to access these opportunities because of their personal circumstances. The figures quoted below include young people in both of these categories.

### Summary

As at the end of January 2012 there were 741 young people aged 16-18 not in education, employment or training in Gloucestershire and this figure translates into an adjusted (\*) 16-18 NEET population of 5.0%. The total number of NEET decreased by 42 young people in January 2012 compared to December 2011. 5 districts saw a decrease in their NEET figure, 1 saw an increase.

### Total NEET Group by District Area

#### January 2012 NEET Data

	Cheltenham	Cotswold	Forest	Gloucester	Stroud	Tewkesbury	Total
Number of NEET	155	51	105	249	106	75	741
Cohort	2726	2181	2395	4749	2988	1934	16973
% NEET	5.7%	2.3%	4.4%	5.2%	3.5%	3.9%	5.0%

If you would like to receive any further information on Gloucestershire's NEET strategy then please contact [Ruth.Critchlow@gloucestershire.gov.uk](mailto:Ruth.Critchlow@gloucestershire.gov.uk) or telephone 01452 551267.