



# KNIGHTS BROWN

## A419 STONEHOUSE JUNCTION IMPROVEMENTS

UPDATE 4: 27/05/2019 - 14/06/2019

### PROJECT UPDATE



Over the past month, we have completed our night works and have begun working during the day. The primary focus of the night works has been to widen the road so that we could safely install temporary barriers that we could work behind. We have completed this work and as a result, are now able to safely undertake future construction works during the day.

We want to thank all residents who were affected by our night works for their patience and understanding whilst this work was undertaken.

Over the next few weeks, we will be continuing works on both the east and westbound approaches. This will involve digging out the approaches and beginning to lay kerbs along the new, wider carriageway.

The pictures below and on the following page highlight the main phases of works that have been completed over the past fortnight.



If you would like further information on the scheme please contact us

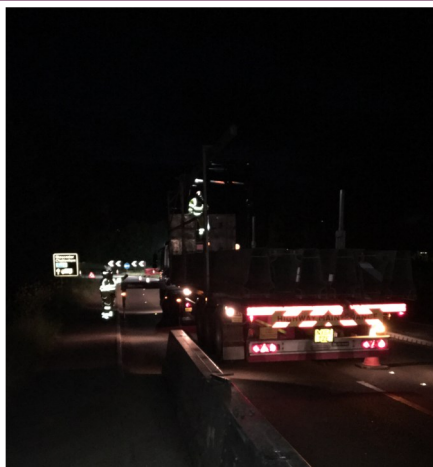
Email: [talktous@knightsbrown.co.uk](mailto:talktous@knightsbrown.co.uk)

Public liaison office - 07818 432183 Site contact : 07775 903923

24 hour emergency contact - 07544 531851



REMOVAL OF OLD BT DUCTS  
FROM THE WESTBOUND EXIT



BARRIER INSTALLATION ON THE  
WESTBOUND APPROACH



DRAINAGE WORKS ON THE  
EASTBOUND APPROACH





# KNIGHTS BROWN

<https://www.gloucestershire.gov.uk/highways/major-projects-list/a419-highway-improvements/>

## TRAFFIC MANAGEMENT



We have installed temporary traffic lights at Chipmans Platt. This will enable us to manage traffic flow effectively and ensure that there is minimal disruption to the travelling public.

This traffic management system will remain in place for the next month.

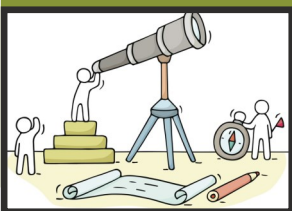


PREPARATIONS FOR THE NEW KERBS ON THE WESTBOUND EXIT HAVE STARTED



## LOOK AHEAD PROGRAMME

- Utilities work ongoing
- Road widening works will continue
- Resurfacing works will be commence on Chipmans Platt roundabout



**Registered site**  
[www.ccscheme.org.uk](http://www.ccscheme.org.uk)



INSTALLATION OF KERBING ON WESTBOUND EXIT



AN INITIAL DIG WAS COMPLETED ON THE WESTBOUND APPROACH TO UNCOVER SERVICES



WESTBOUND EXIT SURFACING COMPLETED AND BACKFILLED VERGE



PREPARATION ON WESTBOUND EXIT FOR SURFACING WORKS