

Unemployment Bulletin

Issue 78 January 2015

Contents

Part 1: Summary

A summary of unemployment data at district, County, regional and national level 1

Part 2: County

Unemployment figures for the County compared to the South West and the rest of the UK 3

Part 3: Districts

A comparative break down of unemployment figures by district 4

Part 4: Wards

Further breakdown of unemployment figures by ward:

Cheltenham	6
Cotswolds	8
Forest of Dean	10
Gloucester	12
Stroud	14
Tewkesbury	16

Part 5: Map

Distribution of claimant rate across Gloucestershire 18

Part 6: Youth Unemployment

Unemployment data for the 18-24 year old age group 20

Part 7: Young People

Data about Young People Not in Education, Employment or Training (NEET) 22

Please note: the ward and LSOA boundaries used in this report have been updated. This means figures for these areas are not comparable with those reported in previous bulletins.

INTRODUCTION

The Unemployment Bulletin provides a monthly update on unemployment data for Gloucestershire, the South West region and the United Kingdom. It is produced by the Strategic Needs Analysis Team in the County Council's Strategy and Challenge function. The data is sourced from the Office for National Statistics via Nomis (www.nomis.co.uk).

The claimant count measures the number of people claiming unemployment-related benefit (currently Job Seeker's allowance). The claimant rate is the number of claimants as a proportion of the working age population.

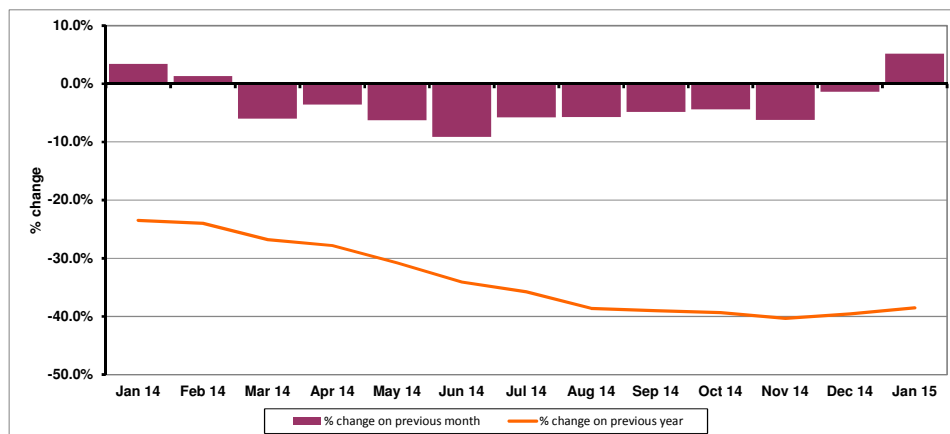
PART 1: SUMMARY

The claimant rate in Gloucestershire was 1.3% in January 2015. This was a 0.1 % increase on the December 2014 figure. The South West and UK rate increased from the previous month to 1.3%, and 2.1% respectively. Gloucestershire's rate was the same as the South West average of 1.3%, and 0.8% lower than the UK average of 2.1%.

The claimant count in Gloucestershire in January 2015 increased by 239 people. The amount of people claiming in January 2015 was 5.2% higher than the number in December 2014. This compares to a 6.4% increase in the South West and a 3.5% increase for the UK.

The year on year claimant count in Gloucestershire has increased since last month. The count was 38.5% lower in January 2015 than at the same point in the previous year as shown in the graph below.

Gloucestershire claimants - Month on Month and Year on Year change: January 2014 to January 2015



Source: ONS Crown Copyright Reserved

Produced by:

Strategic Needs Analysis Team
Strategy and Challenge
Gloucestershire County Council
February 2015

DISTRICTS AT A GLANCE

At a glance unemployment information grouped by district. Includes:

Claim count: Total number of people claiming Job Seekers Allowance in January 2015

Compared to last month: How much larger/smaller January's claimant count is compared to December, expressed as a %

Claimant rate: The % of working population claiming Job Seekers Allowance in January 2015

Highest claiming ward: The ward with the highest claim count in that district and the rate

CHELTEMHAM BOROUGH

Claim count:	961
Compared to last month:	3.8%
Claimant rate:	1.3%
Highest claiming ward	Oakley & St Mark's (2.2%)

GLOUCESTER CITY

Claim count:	1,693
Compared to last month:	3.3%
Claimant rate:	2.1%
Highest claiming ward	Westgate (4.4%)

COTSWOLD DISTRICT

Claim count:	349
Compared to last month:	10.8%
Claimant rate:	0.7%
Highest claiming ward	Cirencester Watermoor (1.6%)

STROUD DISTRICT

Claim count:	613
Compared to last month:	4.1%
Claimant rate:	0.9%
Highest claiming ward	Farmhill and Paganhill & Slade (2.1%)

FOREST OF DEAN

Claim count:	657
Compared to last month:	9.9%
Claimant rate:	1.3%
Highest claiming ward	Cinderford West (2.7%)

TEWKESBURY BOROUGH

Claim count:	580
Compared to last month:	6.0%
Claimant rate:	1.1%
Highest claiming ward	Tewkesbury Prior's Park (3.4%)

YOUNG PEOPLE NOT IN EDUCATION, EMPLOYMENT OR TRAINING (NEET)

At the end of January 2015 there were 569 young people aged 16-18 not in education, employment or training in Gloucestershire and this figure translates into an adjusted (*) 16-18 NEET population of 3.80%.

PART 2: UK, SW AND GLOUCESTERSHIRE INDICATORS

The unemployment situation in Gloucestershire compared to the South West and the UK.

Claimant Rate

Figure 1: Claimant Rate for Gloucestershire, the South West and UK over the past year

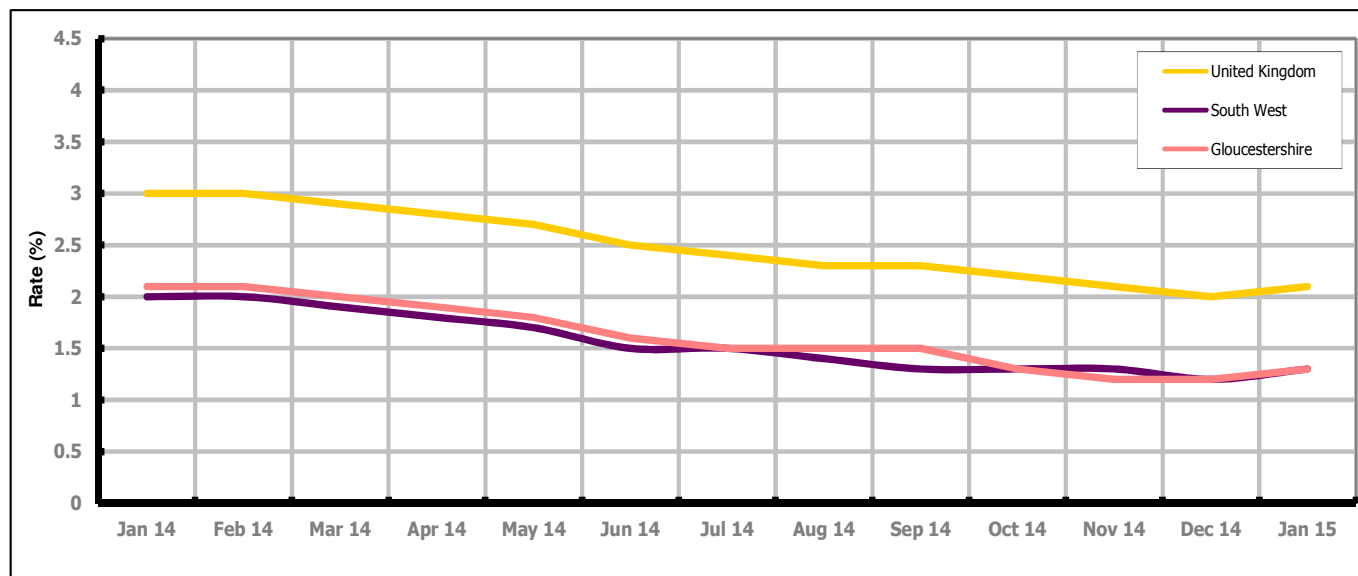


Figure 1 shows the claimant rate for Gloucestershire at 1.3% in January 2015. With the exception of July, October, November and December 2014, and January 2015, the rate has been slightly higher than the South West average. It has been persistently lower by approximately 0.8% against the UK average. The January 2015 rate represented a 0.1% increase on December 2014.

Claimant Count

Table 1: Analysis of UK, South West and Gloucestershire Claimant Counts

Area	Claimant Count in January 2015	% change on December 2014	Average % change over the last six months	Consecutive months increasing
UK	852,934	3.5%	-2.0%	0
South West	43,473	6.4%	-0.9%	0
Gloucestershire	4,853	5.2%	-2.0%	0

Table 1 shows that in January 2015, the number of claimants in Gloucestershire was 5.2% higher than the number in December 2014.

The average change in claimants in Gloucestershire for the six months to January 2015 was -2.0%.

PART 3: LOCAL AUTHORITY DISTRICT ANALYSIS

Claimant Rate and Claimant Count

Figure 2: Claimant Rate (%) across Gloucestershire - January 2015

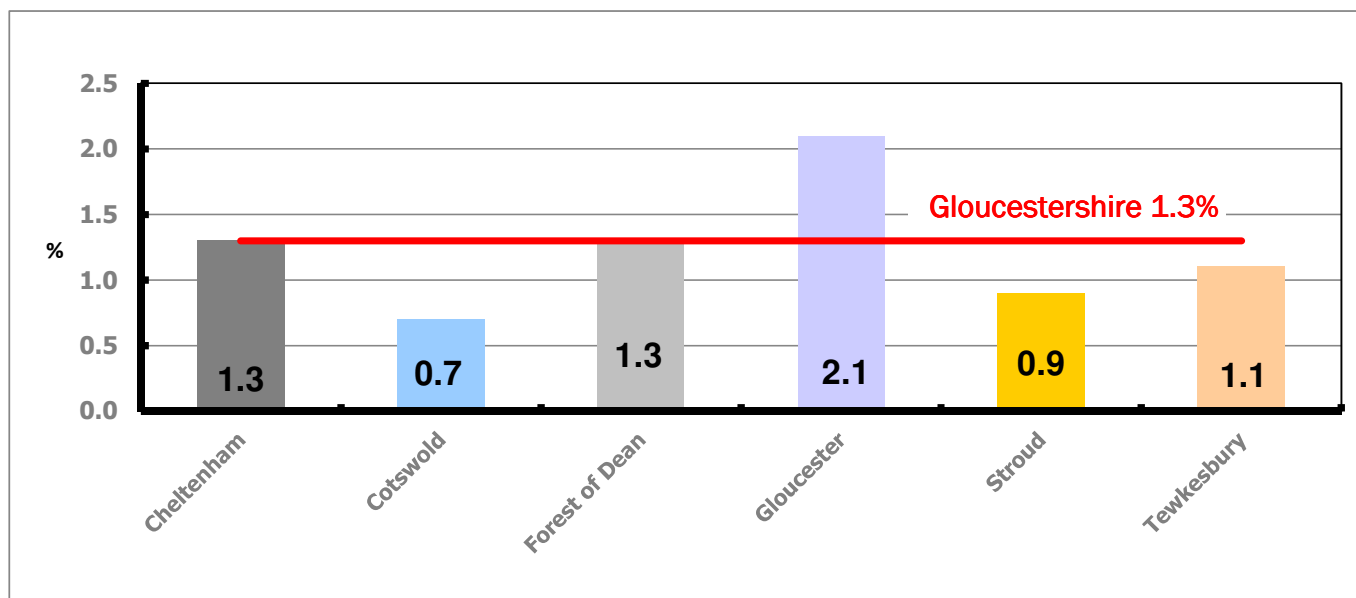


Figure 2 shows the claimant rate for January 2015 in Gloucestershire. Between December 2014 and January 2015, the rate in Cheltenham, Cotswold, Forest of Dean, Gloucester and Stroud increased while the rate in Tewkesbury remained the same.

Figure 3: Total claimants over the past year across Gloucestershire Districts

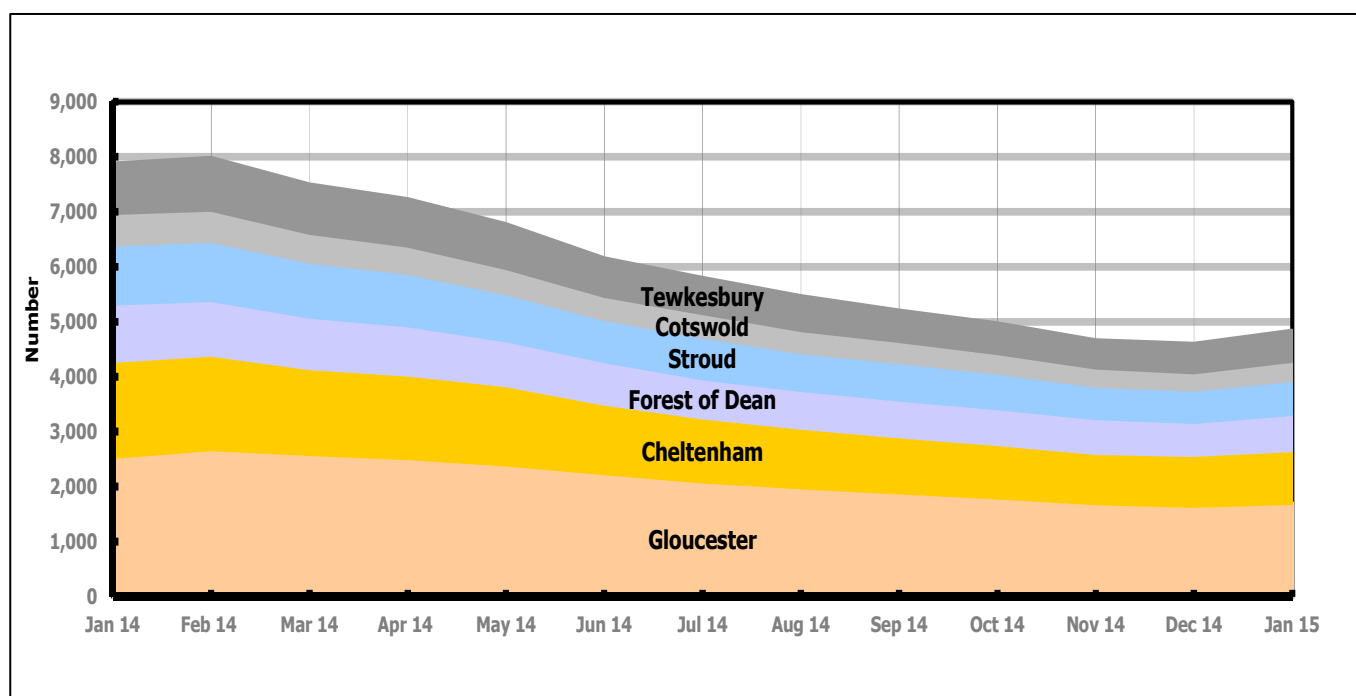


Figure 3 shows the overall claimant count by district over the past year. The number of claimants has decreased over the last year, with the exception February 2014 and January 2015 when there was an increase.

Table 2: Analysis of Gloucestershire and District Claimant Counts

Total	Jan 15 Number	Jan 15 Rate	Dec 14 Number	Dec 14 Rate	Monthly change	% monthly change	Monthly change of rate
Gloucestershire	4,853	1.3	4,614	1.2	239	5.2%	0.1
Cheltenham	961	1.3	926	1.2	35	3.8%	0.1
Cotswold	349	0.7	315	0.6	34	10.8%	0.1
Forest of Dean	657	1.3	598	1.2	59	9.9%	0.1
Gloucester	1,693	2.1	1,639	2.0	54	3.3%	0.1
Stroud	613	0.9	589	0.8	24	4.1%	0.1
Tewkesbury	580	1.1	547	1.1	33	6.0%	0.0

Table 2 shows the change in the claimant count in January 2015 compared to December 2014. All districts saw an increase in the number of claimants.

Table 3: Analysis of Male Gloucestershire and District Claimant Counts

Male	Jan 15 Number	Jan 15 Rate	Dec 14 Number	Dec 14 Rate	Monthly change	% monthly change	Monthly change of rate
Gloucestershire	3,180	1.7	3,033	1.6	147	4.8%	0.1
Cheltenham	644	1.7	625	1.6	19	3.0%	0.1
Cotswold	236	1.0	211	0.9	25	11.8%	0.1
Forest of Dean	424	1.7	391	1.5	33	8.4%	0.2
Gloucester	1,129	2.8	1,095	2.7	34	3.1%	0.1
Stroud	392	1.1	374	1.1	18	4.8%	0.0
Tewkesbury	355	1.4	337	1.3	18	5.3%	0.1

Table 3 shows the change in the male claimant count in January 2015 compared to December 2014. All districts saw an increase in the number of male claimants.

Table 4: Analysis of Female Gloucestershire and District Claimant Counts

Female	Jan 15 Number	Jan 15 Rate	Dec 14 Number	Dec 14 Rate	Monthly change	% monthly change	Monthly change of rate
Gloucestershire	1,673	0.9	1,581	0.8	92	5.8%	0.1
Cheltenham	317	0.8	301	0.8	16	5.3%	0.0
Cotswold	113	0.4	104	0.4	9	8.7%	0.0
Forest of Dean	233	0.9	207	0.8	26	12.6%	0.1
Gloucester	564	1.4	544	1.4	20	3.7%	0.0
Stroud	221	0.6	215	0.6	6	2.8%	0.0
Tewkesbury	225	0.9	210	0.8	15	7.1%	0.1

Table 4 shows the change in the female claimant count in January 2015 compared to December 2014. All districts saw an increase in the number of female claimants.

PART 4: LOCAL AUTHORITY DISTRICT AND WARD ANALYSIS

This section covers the six districts and a comparison of their constituent wards.

4.1 Cheltenham Borough

Claimant Rate and Claimant Count

Figure 4: Cheltenham Borough claimant rate over the last year

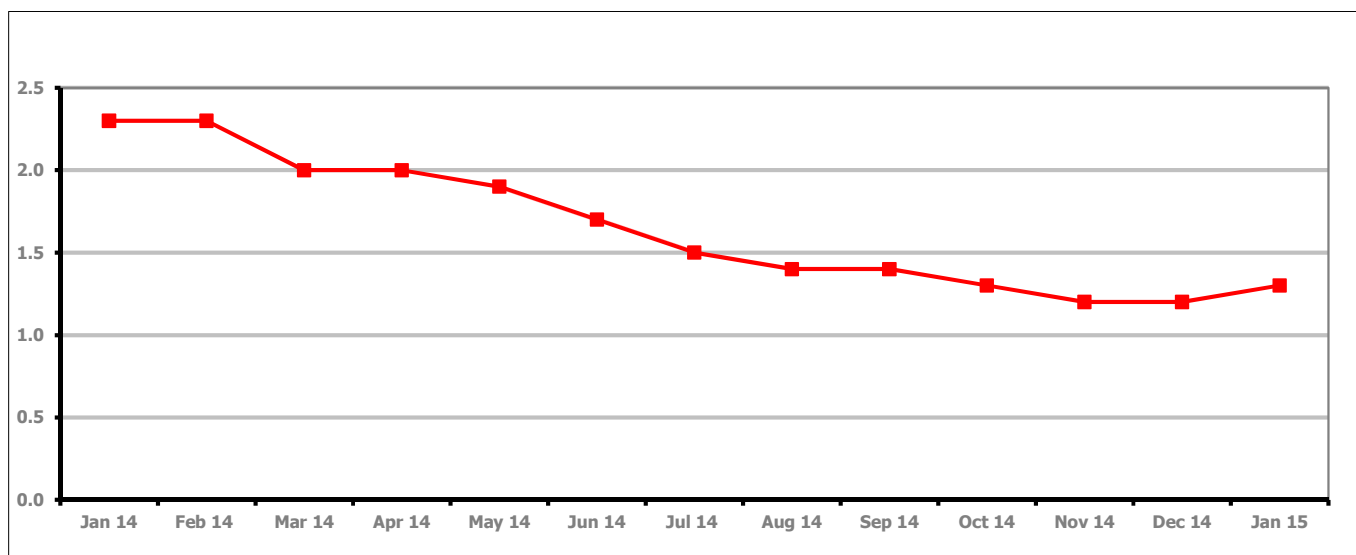


Figure 4 shows the claimant rate in Cheltenham increased in January 2015 to 1.3%.

Figure 5: Cheltenham Borough claimants - Month on Month and Year on Year change

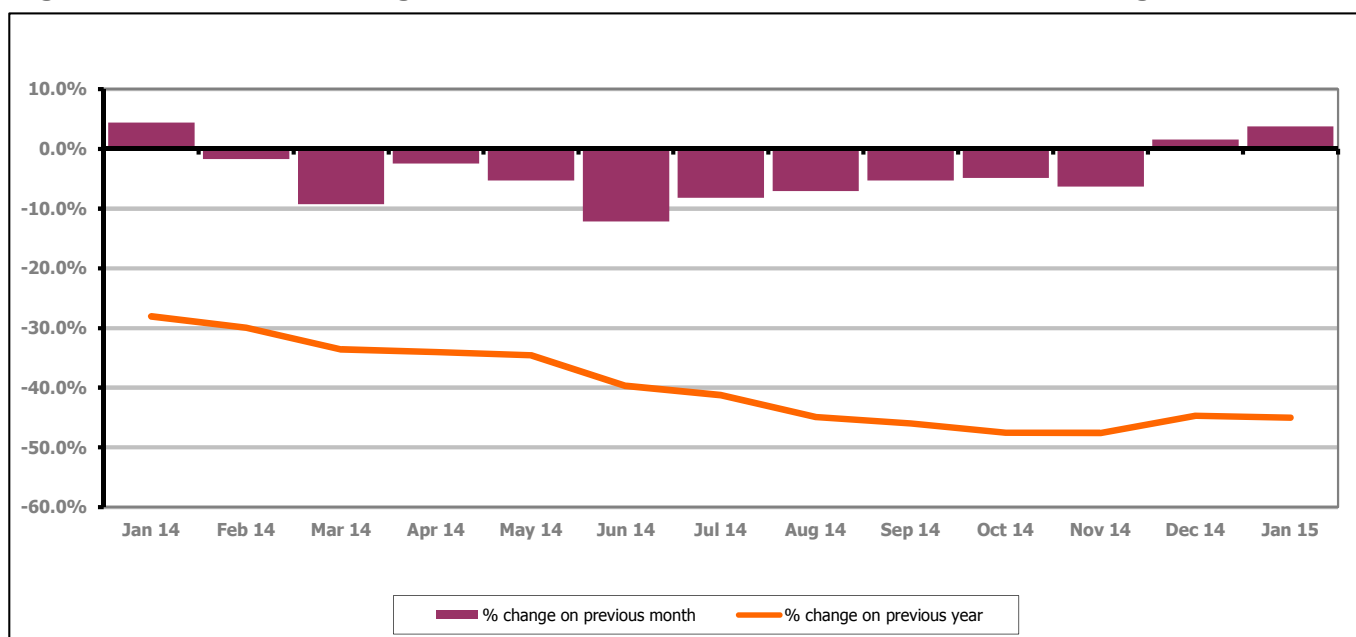


Figure 5 shows the claimant count increased by 3.8% since last month. The change on the previous year has decreased between December 2014 and January 2015 to -45.0%.

PART 4: LOCAL AUTHORITY DISTRICT AND WARD ANALYSIS

4.1 Cheltenham Borough continued...

Figure 6: Claimant rates across Cheltenham Borough wards - January 2015

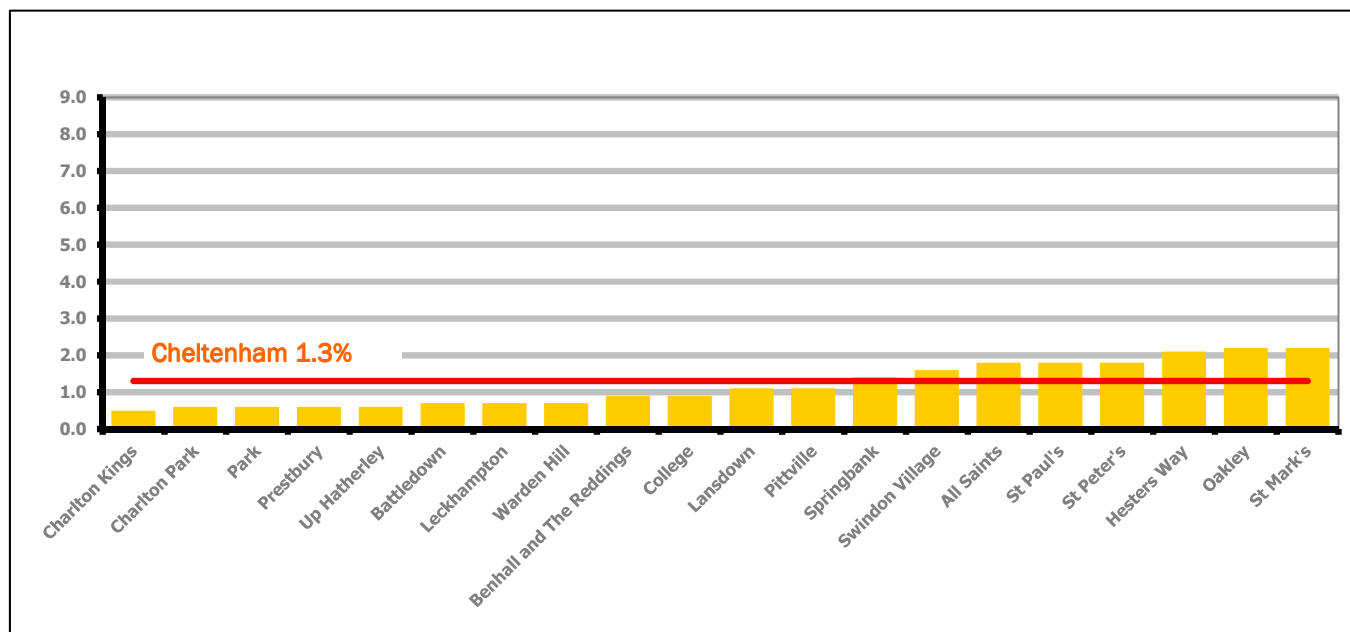


Figure 6 shows the claimant rates for Cheltenham Borough wards. The red line represents the average claimant rate across the Borough of 1.3%. Eight wards lie above the average.

Table 5: Analysis of Claimant Count at Cheltenham Borough ward level - January 2015

District	Ward	Rate	Rank*
Cheltenham	Charlton Kings	0.5	18
Cheltenham	Charlton Park	0.6	27
Cheltenham	Park	0.6	27
Cheltenham	Prestbury	0.6	27
Cheltenham	Up Hatherley	0.6	27
Cheltenham	Battledown	0.7	41
Cheltenham	Leckhampton	0.7	41
Cheltenham	Warden Hill	0.7	41
Cheltenham	Benhall and The Reddings	0.9	71
Cheltenham	College	0.9	71
Cheltenham	Lansdown	1.1	91
Cheltenham	Pittville	1.1	91
Cheltenham	Springbank	1.4	105
Cheltenham	Swindon Village	1.6	117
Cheltenham	All Saints	1.8	123
Cheltenham	St Paul's	1.8	123
Cheltenham	St Peter's	1.8	123
Cheltenham	Hesters Way	2.1	129
Cheltenham	Oakley	2.2	132
Cheltenham	St Mark's	2.2	132

bottom 10% of county
 first quartile of county
 second quartile of county
 third quartile of county
 fourth quartile of county
 highest 10% of county

* 1 = "best" and 142 = "worst"

Table 5 shows overall claimant rates for Cheltenham Borough wards and their position relative to all wards in Gloucestershire.

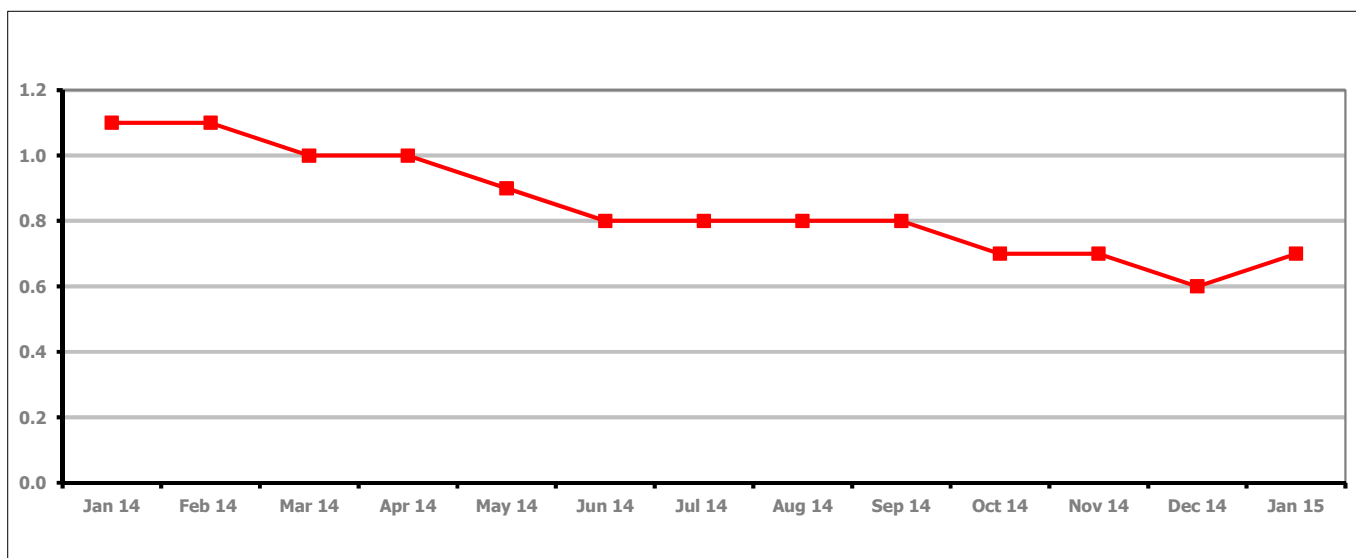
PART 4: LOCAL AUTHORITY DISTRICT AND WARD ANALYSIS**4.2 Cotswold District****Claimant Rate and Claimant Count***Figure 7: Cotswold District claimant rate over the last year*

Figure 7 shows the claimant rate in Cotswold District increased in January 2015 to 0.7%.

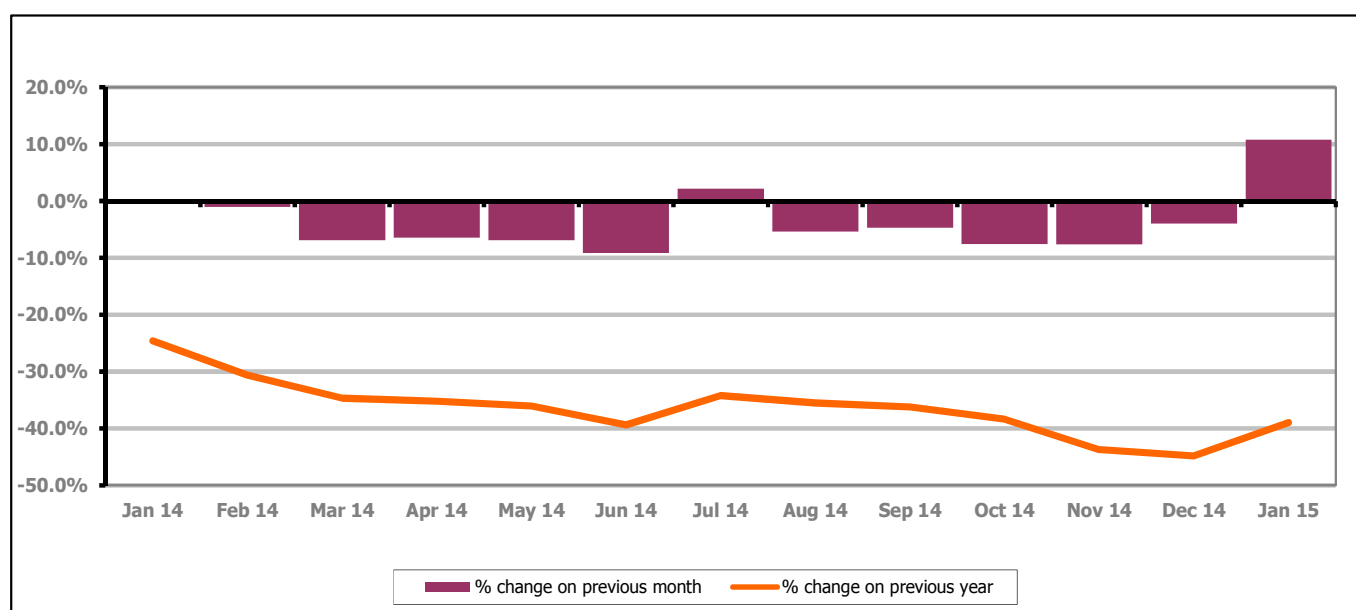
Figure 8: Cotswold District claimants - Month on Month and Year on Year change

Figure 8 shows the claimant count increased by 10.8% since December 2014. The change on the previous year has increased between December 2014 and January 2015 to -39.0%.

PART 4: LOCAL AUTHORITY DISTRICT AND WARD ANALYSIS

4.2 Cotswold District continued...

Figure 9: Claimant rates across Cotswold District wards - January 2015

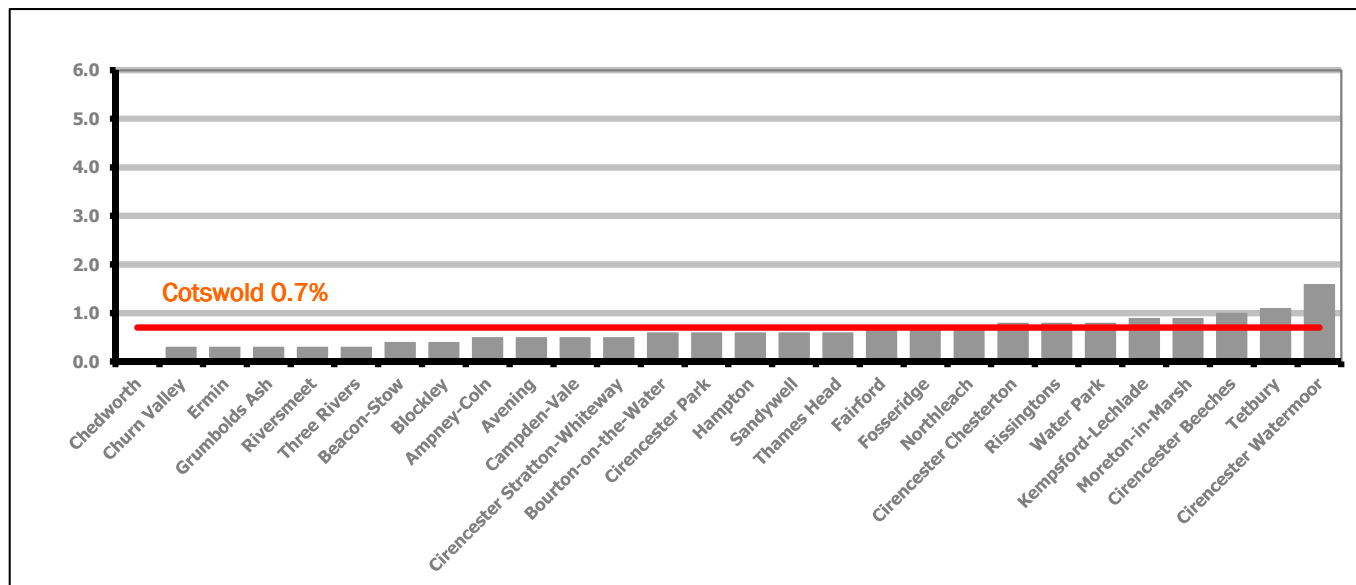
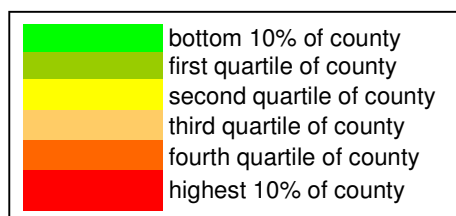


Figure 9 shows the claimant rates for Cotswold District wards. The red line represents the average claimant rate across the District of 0.7%. Eight wards lie above the average.

Table 6: Analysis of Claimant Count at Cotswold District ward level - January 2015

District	Ward	Rate	Rank*
Cotswolds	Chedworth	<0.2	1
Cotswolds	Churn Valley	0.3	3
Cotswolds	Ermin	0.3	3
Cotswolds	Grumbolds Ash	0.3	3
Cotswolds	Riversmeet	0.3	3
Cotswolds	Three Rivers	0.3	3
Cotswolds	Beacon-Stow	0.4	10
Cotswolds	Blockley	0.4	10
Cotswolds	Ampney-Coln	0.5	18
Cotswolds	Avening	0.5	18
Cotswolds	Campden-Vale	0.5	18
Cotswolds	Cirencester Stratton-Whiteway	0.5	18
Cotswolds	Bourton-on-the-Water	0.6	27
Cotswolds	Cirencester Park	0.6	27
Cotswolds	Hampton	0.6	27
Cotswolds	Sandywell	0.6	27
Cotswolds	Thames Head	0.6	27
Cotswolds	Fairford	0.7	41
Cotswolds	Fosseridge	0.7	41
Cotswolds	Northleach	0.7	41
Cotswolds	Cirencester Chesterton	0.8	59
Cotswolds	Rissingtons	0.8	59
Cotswolds	Water Park	0.8	59
Cotswolds	Kempsford-Lechlade	0.9	71
Cotswolds	Moreton-in-Marsh	0.9	71
Cotswolds	Cirencester Beeches	1.0	84
Cotswolds	Tetbury	1.1	91
Cotswolds	Cirencester Watermoor	1.6	117



* 1 = "best" and 142 = "worst"

Table 6 shows overall claimant rates for Cotswold District wards and their position relative to all wards in Gloucestershire.

PART 4: LOCAL AUTHORITY DISTRICT AND WARD ANALYSIS

4.3 Forest of Dean District

Claimant Rate and Claimant Count

Figure 10: Forest of Dean District claimant rate over the last year

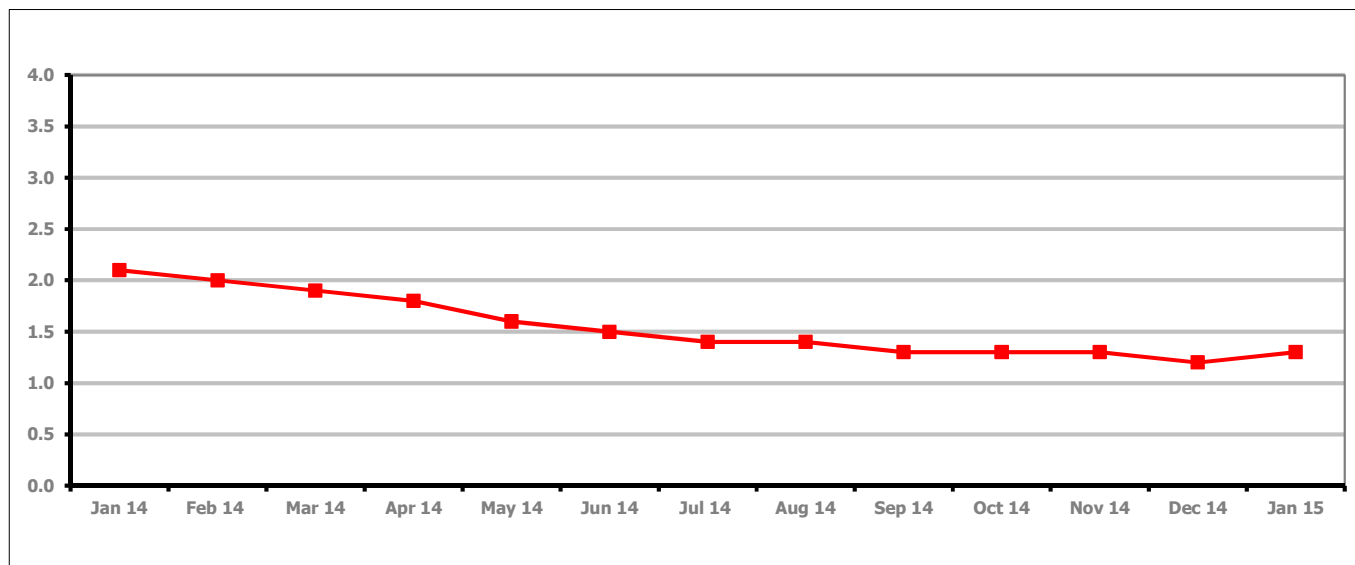


Figure 10 shows the claimant rate in the Forest of Dean increased in January 2015 to 1.3%.

Figure 11: Forest of Dean District claimants - Month on Month and Year on Year change

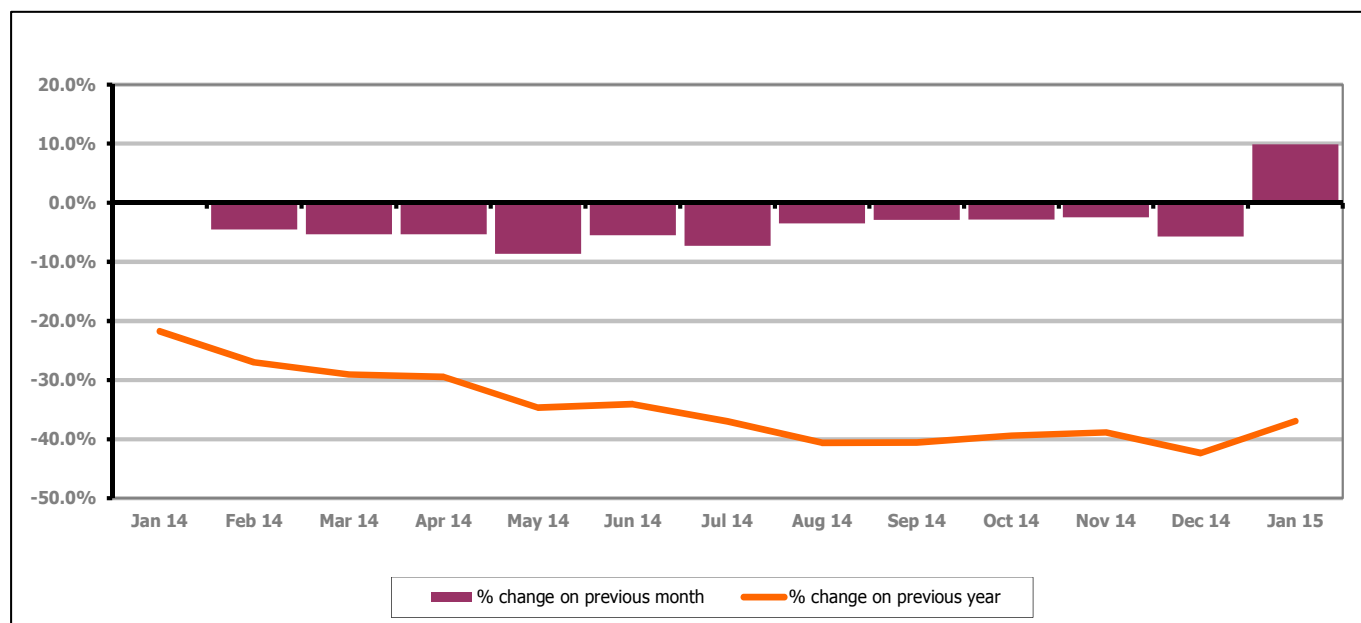


Figure 11 shows the claimant count increased by 9.9% since December 2014. The change on the previous year has increased between December 2014 and January 2015 to -36.9%.

PART 4: LOCAL AUTHORITY DISTRICT AND WARD ANALYSIS

4.3 Forest of Dean District continued...

Figure 12: Claimant rates across Forest of Dean District wards - January 2015

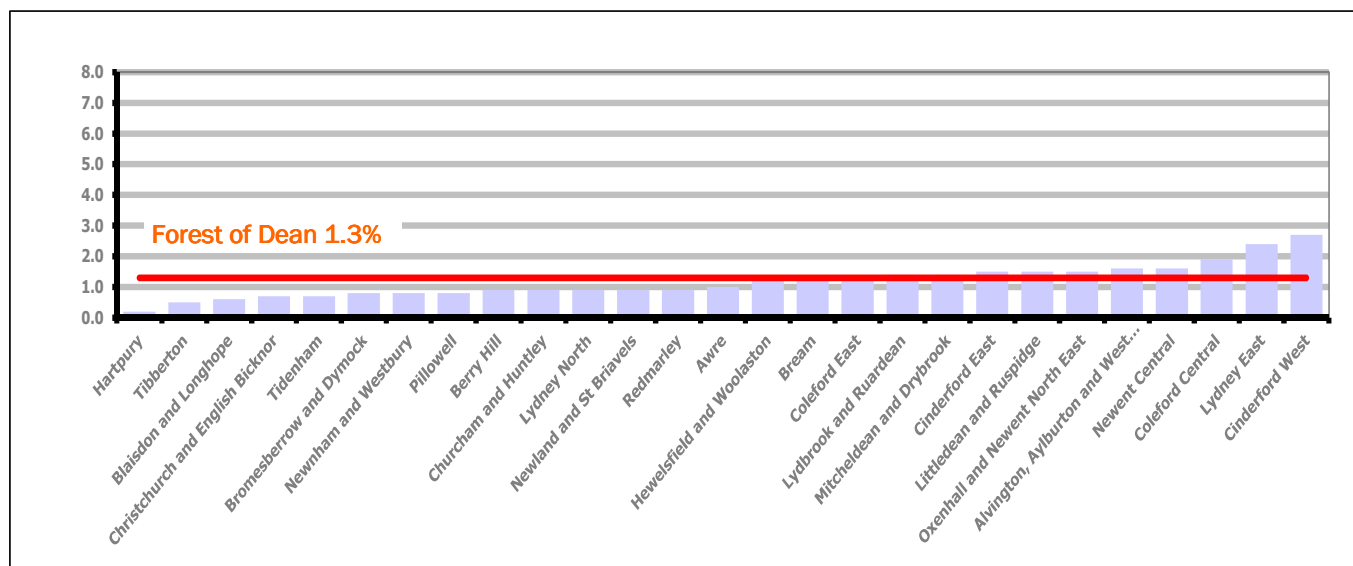
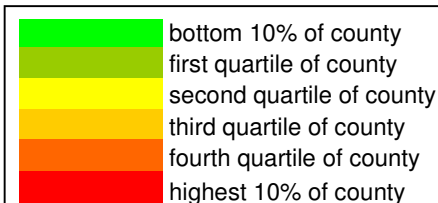


Figure 12 shows the claimant rates for Forest of Dean District wards. The red line represents the average claimant rate across the District of 1.3%. Ten wards lie above the average.

Table 7: Analysis of Claimant Count at Forest of Dean District ward level - January 2015

District	Ward	Rate	Rank*
Forest	Hartpur	0.2	2
Forest	Tibberton	0.5	18
Forest	Blaisdon and Longhope	0.6	27
Forest	Christchurch and English Bicknor	0.7	41
Forest	Tidenham	0.7	41
Forest	Bromesberrow and Dymock	0.8	59
Forest	Newnham and Westbury	0.8	59
Forest	Pillowell	0.8	59
Forest	Berry Hill	0.9	71
Forest	Churcham and Huntley	0.9	71
Forest	Lydney North	0.9	71
Forest	Newland and St Briavels	0.9	71
Forest	Redmarley	0.9	71
Forest	Awre	1.0	84
Forest	Hewelsfield and Woolaston	1.2	95
Forest	Bream	1.3	102
Forest	Coleford East	1.3	102
Forest	Lydbrook and Ruardean	1.4	105
Forest	Mitcheldean and Drybrook	1.4	105
Forest	Cinderford East	1.5	112
Forest	Littledean and Ruspidge	1.5	112
Forest	Oxenhall and Newent North East	1.5	112
Forest	Alvington, Aylburton and West Lydney	1.6	117
Forest	Newent Central	1.6	117
Forest	Coleford Central	1.9	126
Forest	Lydney East	2.4	134
Forest	Cinderford West	2.7	136



* 1 = "best" and 142 = "worst"

Table 7 shows overall claimant rates for the Forest of Dean District wards and their position relative to all wards in Gloucestershire.

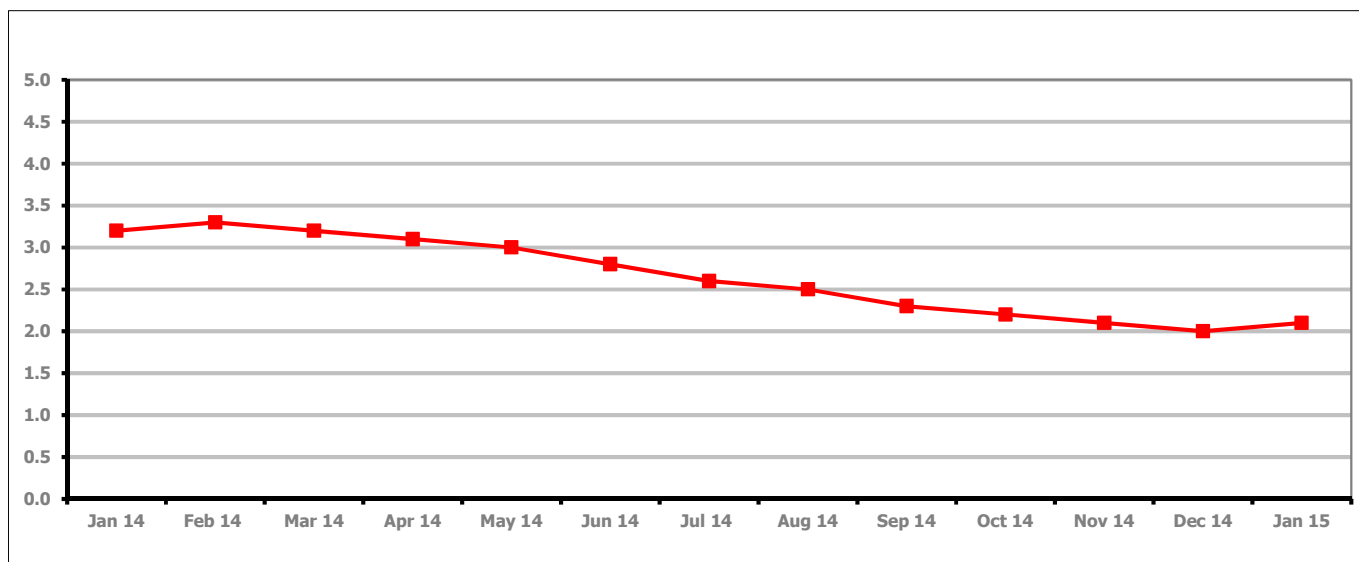
PART 4: LOCAL AUTHORITY DISTRICT AND WARD ANALYSIS**4.4 Gloucester City****Claimant Rate and Claimant Count***Figure 13: Gloucester City claimant rate over the last year*

Figure 13 shows the claimant rate for Gloucester City increased in January 2015 to 2.1%.

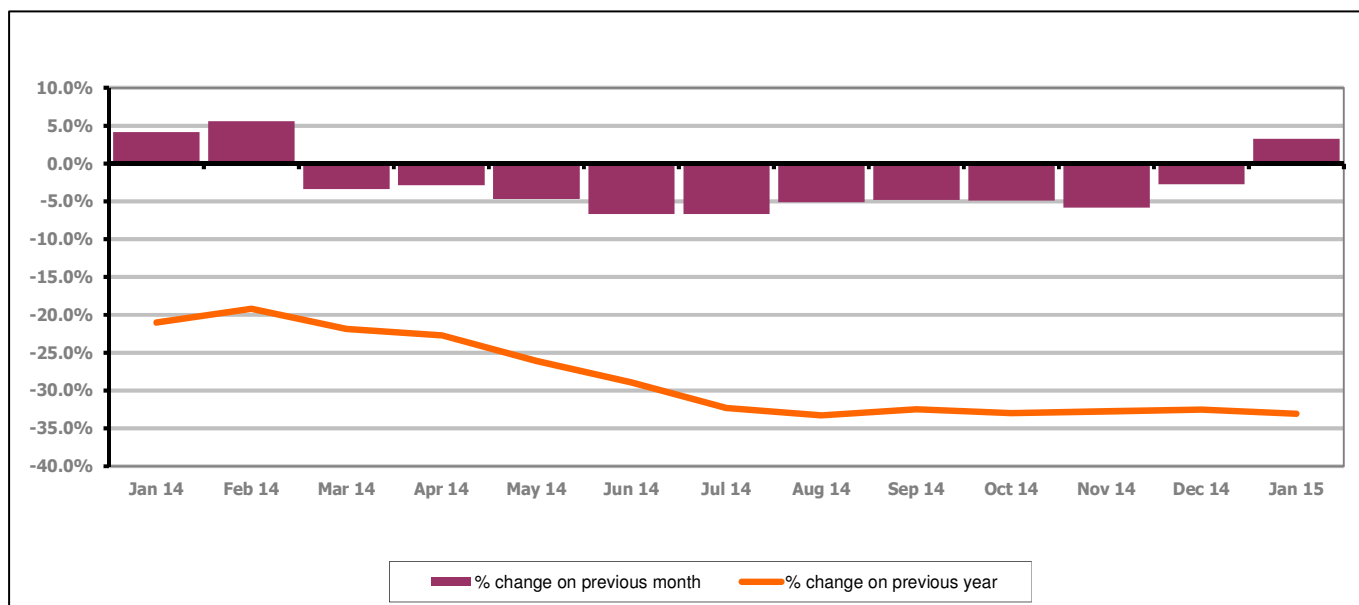
Figure 14: Gloucester City claimants - Month on Month and Year on Year change

Figure 14 shows the monthly claimant count increased by 3.3% since December 2014. The change on the previous year has decreased between December 2014 and January 2015 to -33.1%.

PART 4: LOCAL AUTHORITY DISTRICT AND WARD ANALYSIS

4.4 Gloucester City continued...

Figure 15: Claimant rates across Gloucester City wards - January 2015

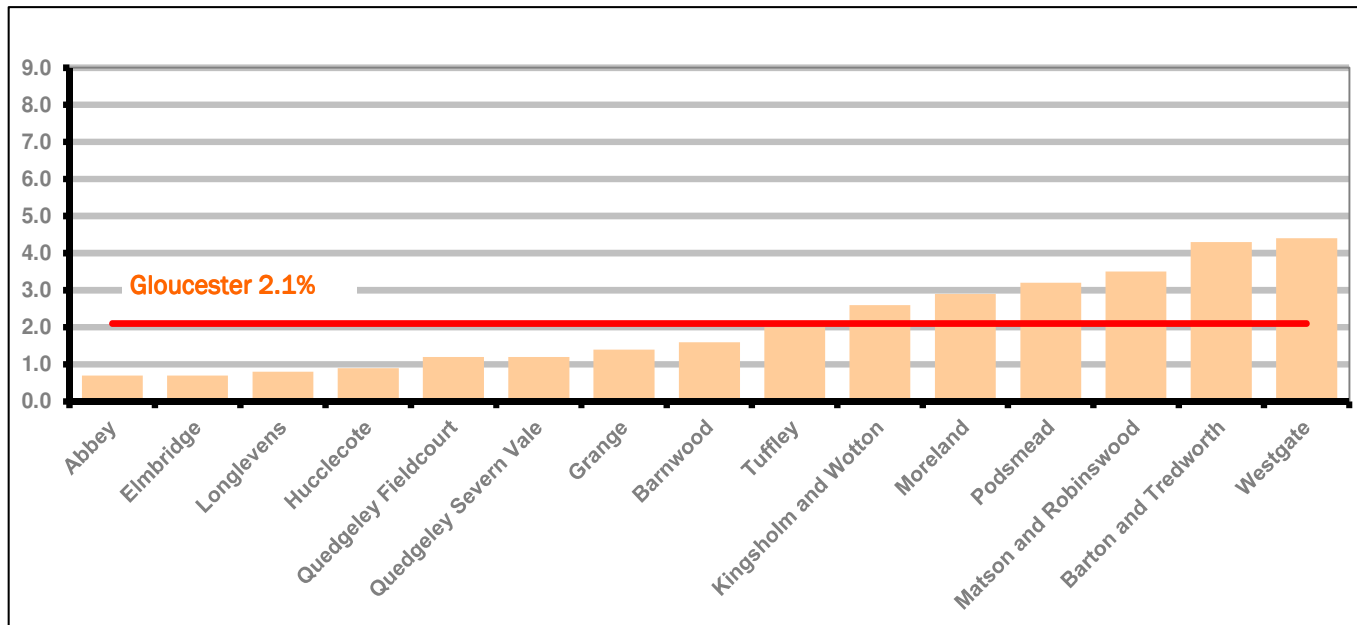


Figure 15 shows the claimant rates for Gloucester City district wards. The red line represents the average claimant rate across the City of 2.1%. Six wards lie above the average.

Table 8: Analysis of Claimant Count at Gloucester City ward level - January 2015

District	Ward	Rate	Rank*
Gloucester	Abbey	0.7	41
Gloucester	Elmbridge	0.7	41
Gloucester	Longlevens	0.8	59
Gloucester	Hucclecote	0.9	71
Gloucester	Quedgeley Fieldcourt	1.2	95
Gloucester	Quedgeley Severn Vale	1.2	95
Gloucester	Grange	1.4	105
Gloucester	Barnwood	1.6	117
Gloucester	Tuffley	2.0	127
Gloucester	Kingsholm and Wotton	2.6	135
Gloucester	Moreland	2.9	137
Gloucester	Podsmead	3.2	138
Gloucester	Matson and Robinswood	3.5	140
Gloucester	Barton and Tredworth	4.3	141
Gloucester	Westgate	4.4	142

bottom 10% of county

first quartile of county

second quartile of county

third quartile of county

fourth quartile of county

highest 10% of county

* 1 = "best" and 142 = "worst"

Table 8 shows overall claimant rates for Gloucester City wards and their position relative to all wards in Gloucestershire.

PART 4: LOCAL AUTHORITY DISTRICT AND WARD ANALYSIS

4.5 Stroud District

Claimant Rate and Claimant Count

Figure 16: Stroud District claimant rate over the last year

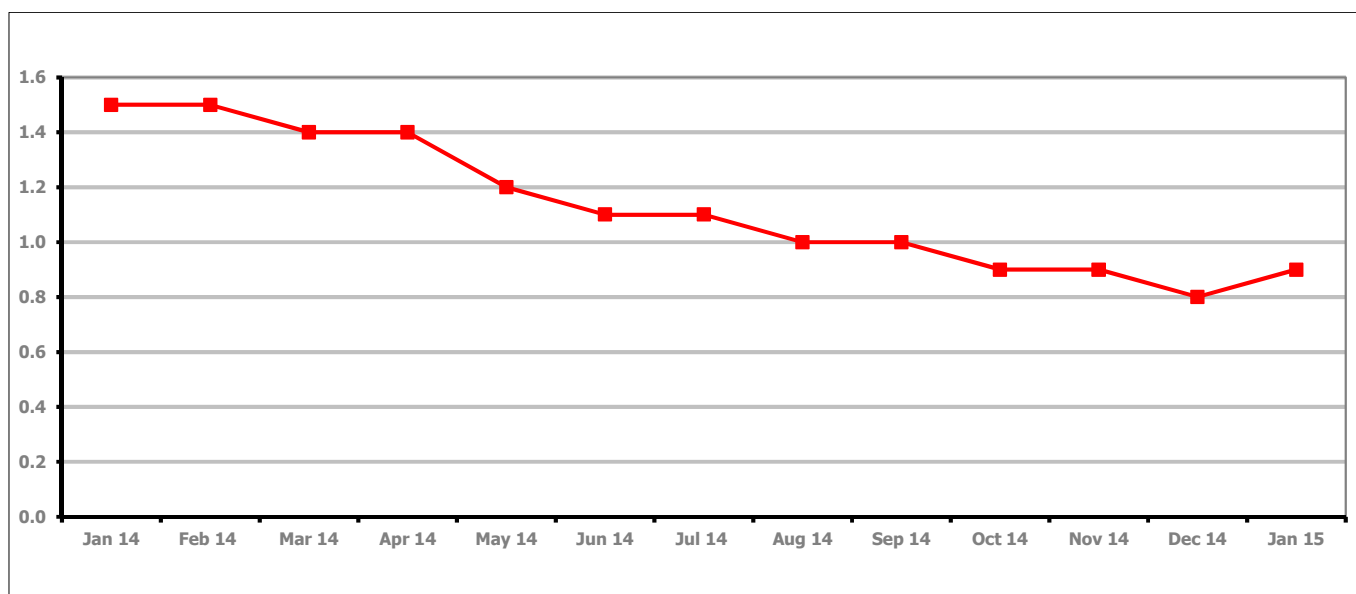


Figure 16 shows the claimant rate for Stroud increased in January 2015 to 0.9%.

Figure 17: Stroud District claimants - Month on Month and Year on Year change

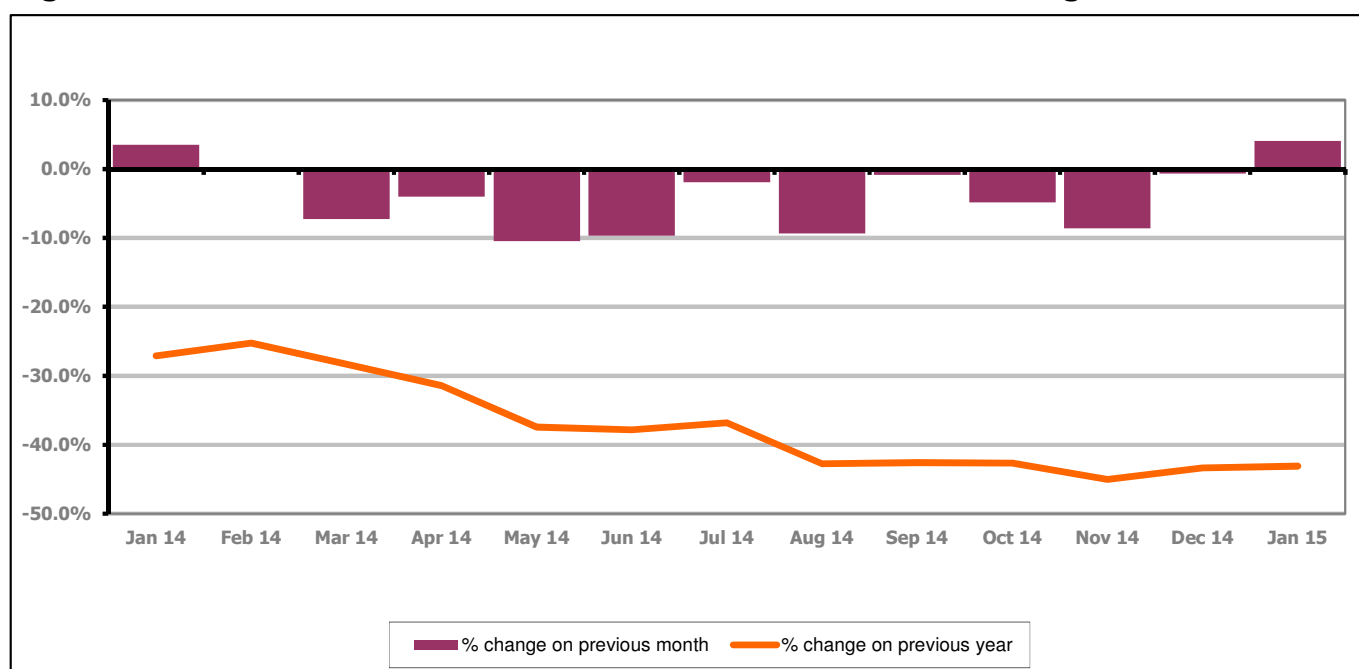


Figure 17 shows the monthly claimant count increased by 4.1% since December 2014. The change on the previous year has increased between December 2014 and January 2015 to -43.1%.

PART 4: LOCAL AUTHORITY AND DISTRICT ANALYSIS

4.5 Stroud District continued...

Figure 18: Claimant rates across Stroud District wards - January 2015

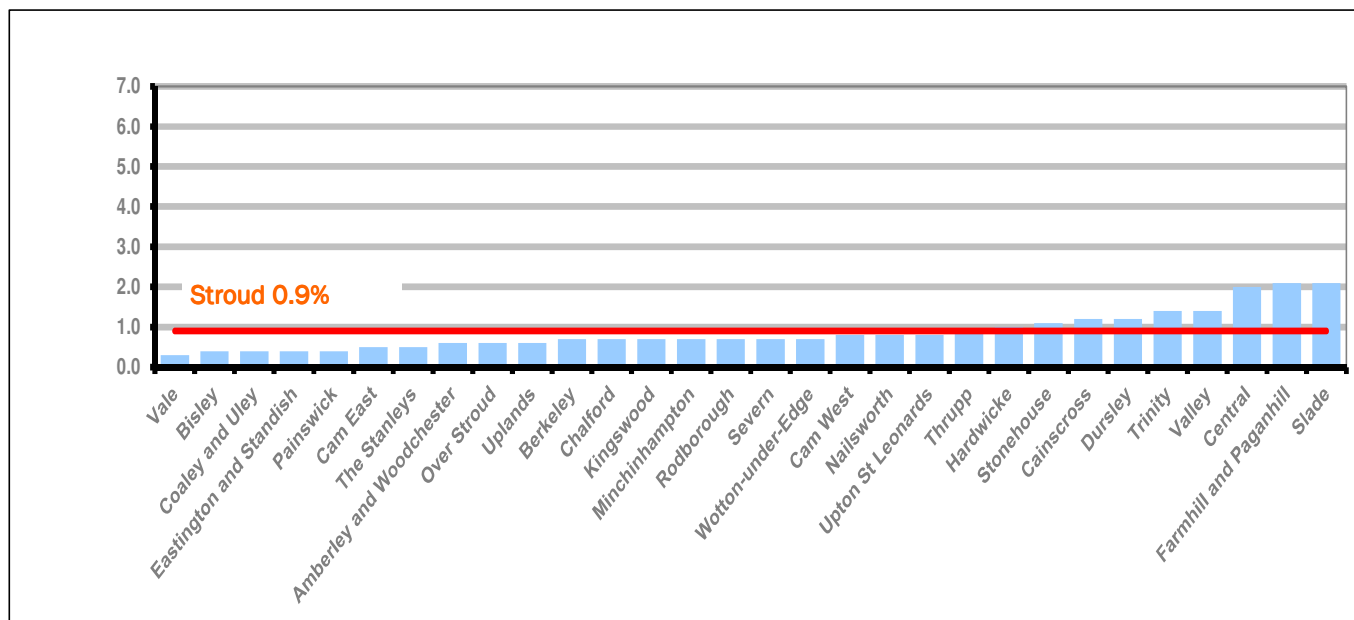
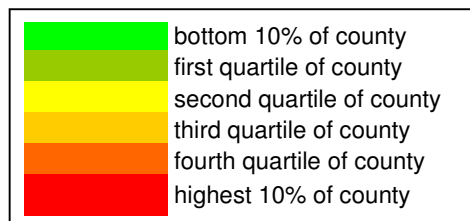


Figure 18 shows the claimant rates in Stroud District wards. The red line represents the average claimant rate across the District of 0.9%. Nine wards are above the average.

Table 9: Analysis of Claimant Count at Stroud District ward level - January 2015

District	Ward	Rate	Rank*
Stroud	Vale	0.3	3
Stroud	Bisley	0.4	10
Stroud	Coaley and Uley	0.4	10
Stroud	Eastington and Standish	0.4	10
Stroud	Painswick	0.4	10
Stroud	Cam East	0.5	18
Stroud	The Stanleys	0.5	18
Stroud	Amberley and Woodchester	0.6	27
Stroud	Over Stroud	0.6	27
Stroud	Uplands	0.6	27
Stroud	Berkeley	0.7	41
Stroud	Chalford	0.7	41
Stroud	Kingswood	0.7	41
Stroud	Minchinhampton	0.7	41
Stroud	Rodborough	0.7	41
Stroud	Severn	0.7	41
Stroud	Wotton-under-Edge	0.7	41
Stroud	Cam West	0.8	59
Stroud	Nailsworth	0.8	59
Stroud	Upton St Leonards	0.8	59
Stroud	Thrupp	0.9	71
Stroud	Hardwicke	1.0	84
Stroud	Stonehouse	1.1	91
Stroud	Cainscross	1.2	95
Stroud	Dursley	1.2	95
Stroud	Trinity	1.4	105
Stroud	Valley	1.4	105
Stroud	Central	2.0	127
Stroud	Farmhill and Paganhill	2.1	129
Stroud	Slade	2.1	129



* 1 = "best" and 142 = "worst"

Table 9 shows overall claimant rates for Stroud District wards and their position relative to all wards in Gloucestershire.

PART 4: LOCAL AUTHORITY DISTRICT AND WARD ANALYSIS

4.6 Tewkesbury District

Claimant Rate and Claimant Count

Figure 19: Tewkesbury District claimant rate over the last year

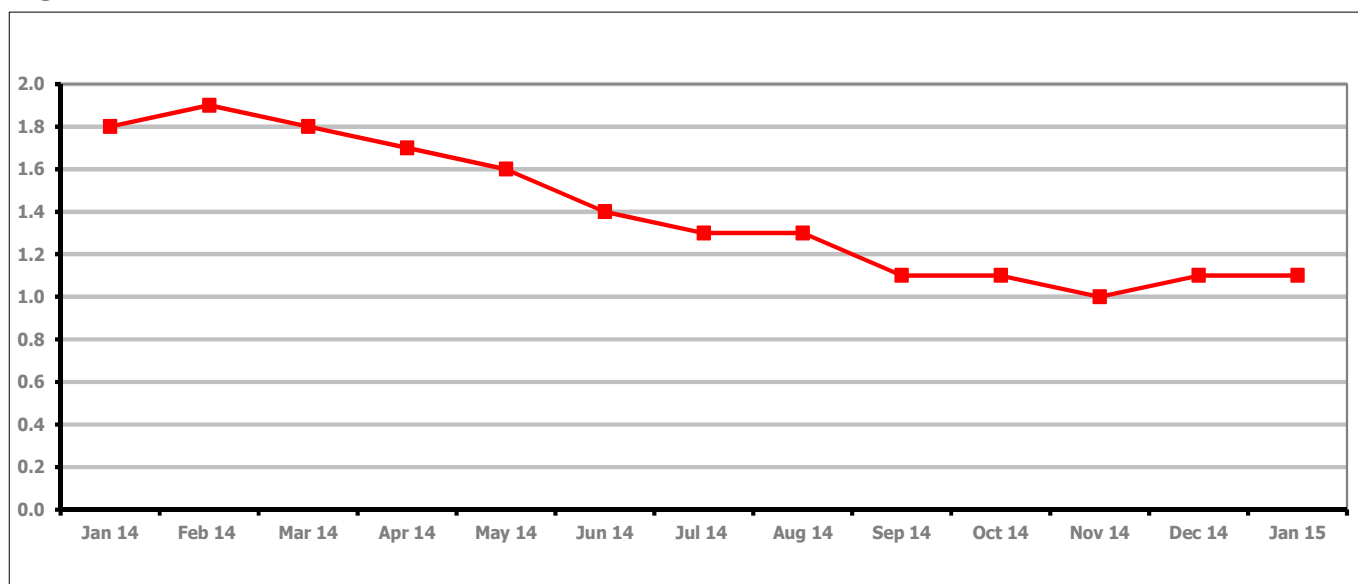


Figure 19 shows the claimant rate for Tewkesbury District remained the same as last month at 1.1%

Figure 20: Tewkesbury District claimants - Month on Month and Year on Year change

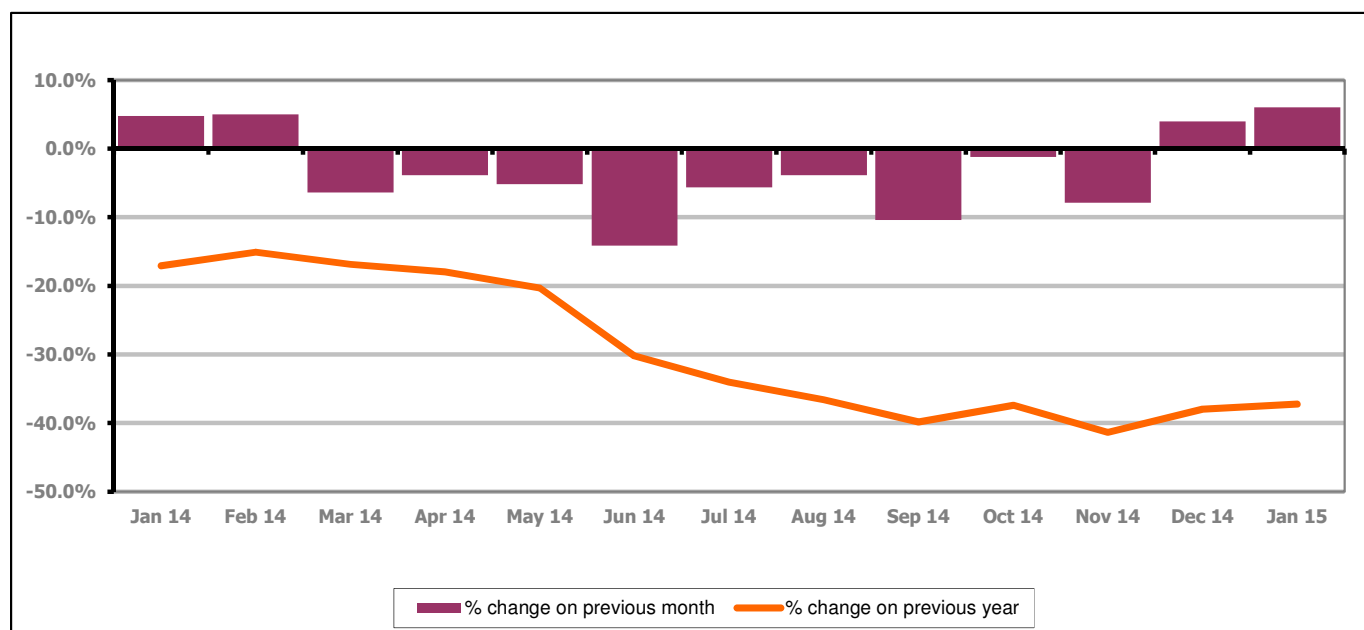


Figure 20 shows that the monthly claimant count increased by 6.0% since December 2014. The change on the previous year increased between December 2014 and January 2015 to -37.2%.

PART 4: LOCAL AUTHORITY AND DISTRICT ANALYSIS

4.6 Tewkesbury District continued...

Figure 21: Claimant rates across Tewkesbury District wards - January 2015

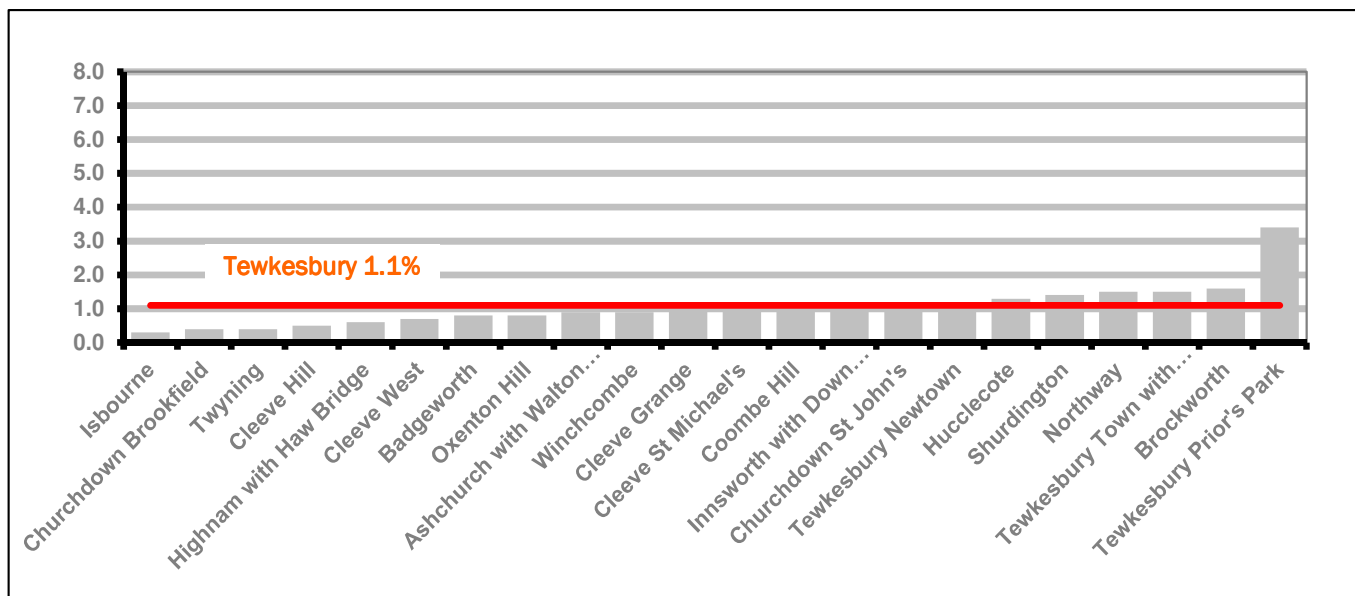
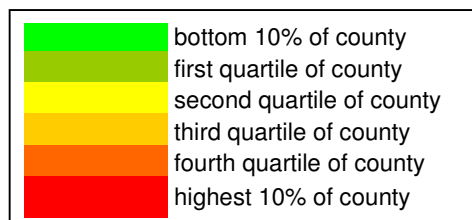


Figure 21 shows the claimant rates in Tewkesbury District wards. The red line represents the average claimant rate across the District of 1.1% and eight wards are above the average.

Table 10: Analysis of Claimant Count at Tewkesbury District level - January 2015

District	Ward	Rate	Rank*
Tewkesbury	Isbourne	0.3	3
Tewkesbury	Churchdown Brookfield	0.4	10
Tewkesbury	Twynning	0.4	10
Tewkesbury	Cleeve Hill	0.5	18
Tewkesbury	Highnam with Haw Bridge	0.6	27
Tewkesbury	Cleeve West	0.7	41
Tewkesbury	Badgeworth	0.8	59
Tewkesbury	Oxenton Hill	0.8	59
Tewkesbury	Ashchurch with Walton Cardiff	0.9	71
Tewkesbury	Winchcombe	0.9	71
Tewkesbury	Cleeve Grange	1.0	84
Tewkesbury	Cleeve St Michael's	1.0	84
Tewkesbury	Coombe Hill	1.0	84
Tewkesbury	Innsworth with Down Hatherley	1.0	84
Tewkesbury	Churchdown St John's	1.2	95
Tewkesbury	Tewkesbury Newtown	1.2	95
Tewkesbury	Hucclecote	1.3	102
Tewkesbury	Shurdington	1.4	105
Tewkesbury	Northway	1.5	112
Tewkesbury	Tewkesbury Town with Mitton	1.5	112
Tewkesbury	Brockworth	1.6	117
Tewkesbury	Tewkesbury Prior's Park	3.4	139

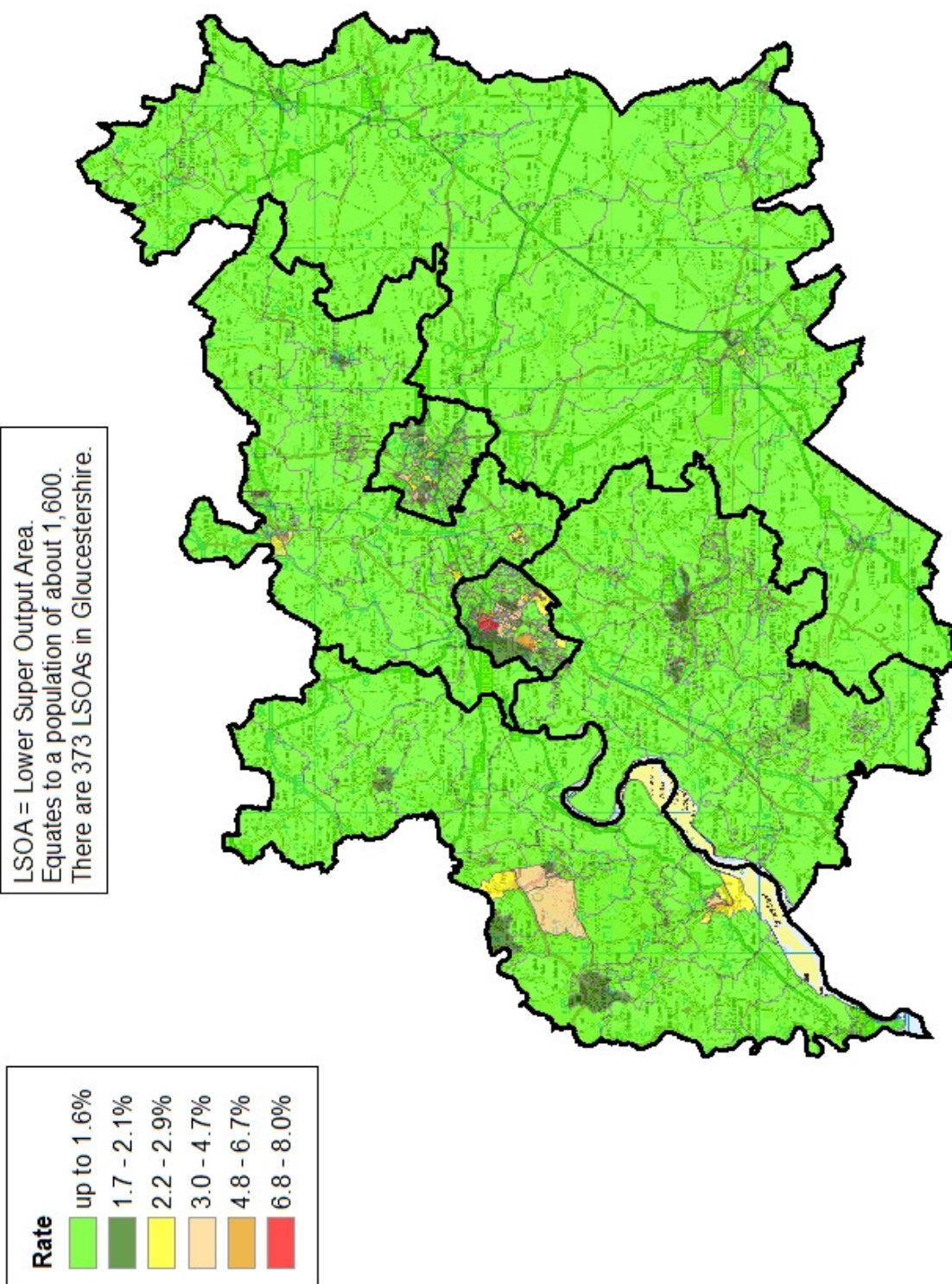


* 1 = "best" and 142 = "worst"

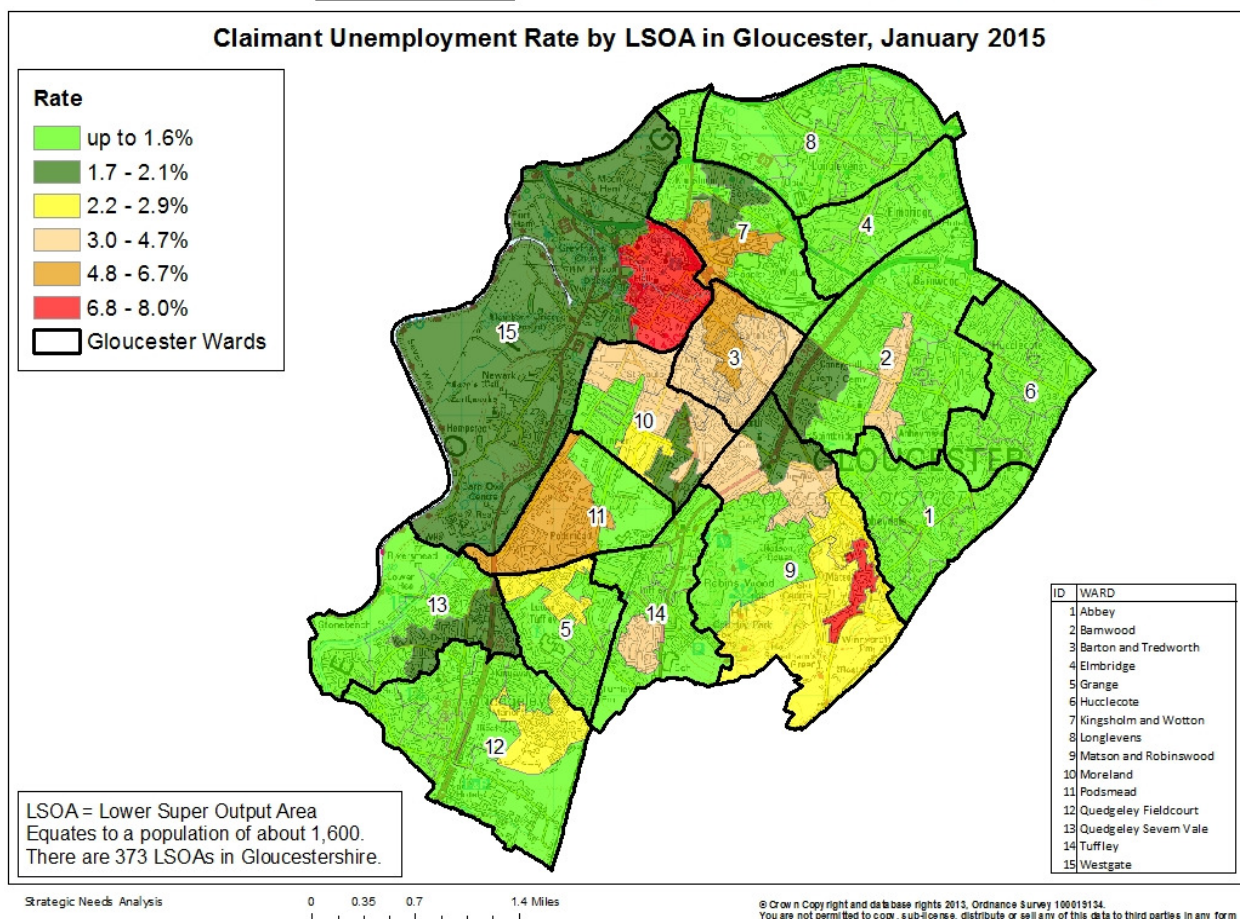
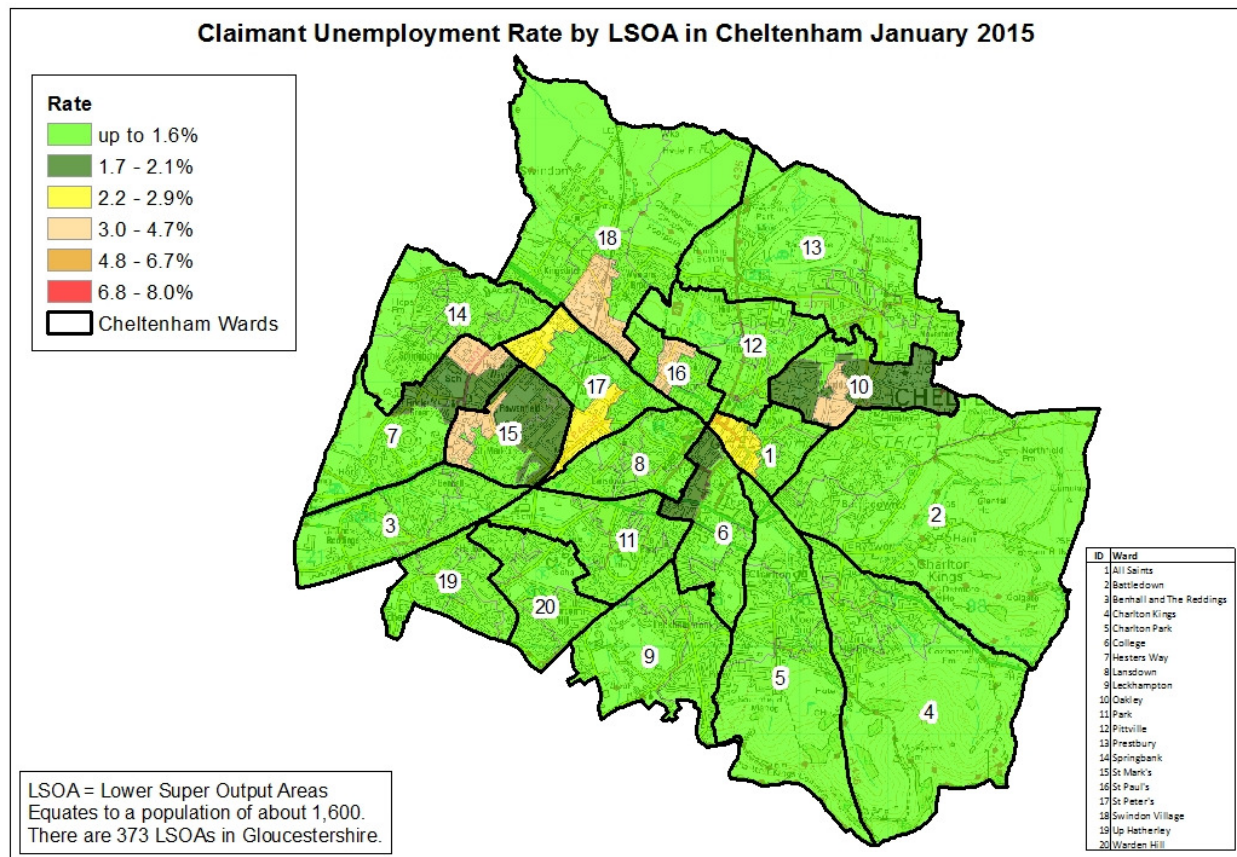
Table 10 shows overall claimant rates for Tewkesbury District wards and their position relative to all wards in Gloucestershire.

PART 5: MAP SHOWING DISTRIBUTION OF CLAIMANT RATE ACROSS GLOUCESTERSHIRE

Claimant Unemployment Rate by LSOA in Gloucestershire, January 2015



PART 5: MAP SHOWING DISTRIBUTION OF CLAIMANT RATE ACROSS GLOUCESTERSHIRE



PART 6: YOUTH UNEMPLOYMENT(18-24 year olds)

Youth Claimant Rate and Claimant Count

The claimant rate for young people is higher than for the working age (16-64) population with 2.2% of 18-24 year olds in Gloucestershire claiming Job Seekers Allowance (1.3% for working age).

Figure 22: Youth Claimant Rate for Gloucestershire, the South West and UK over the past year

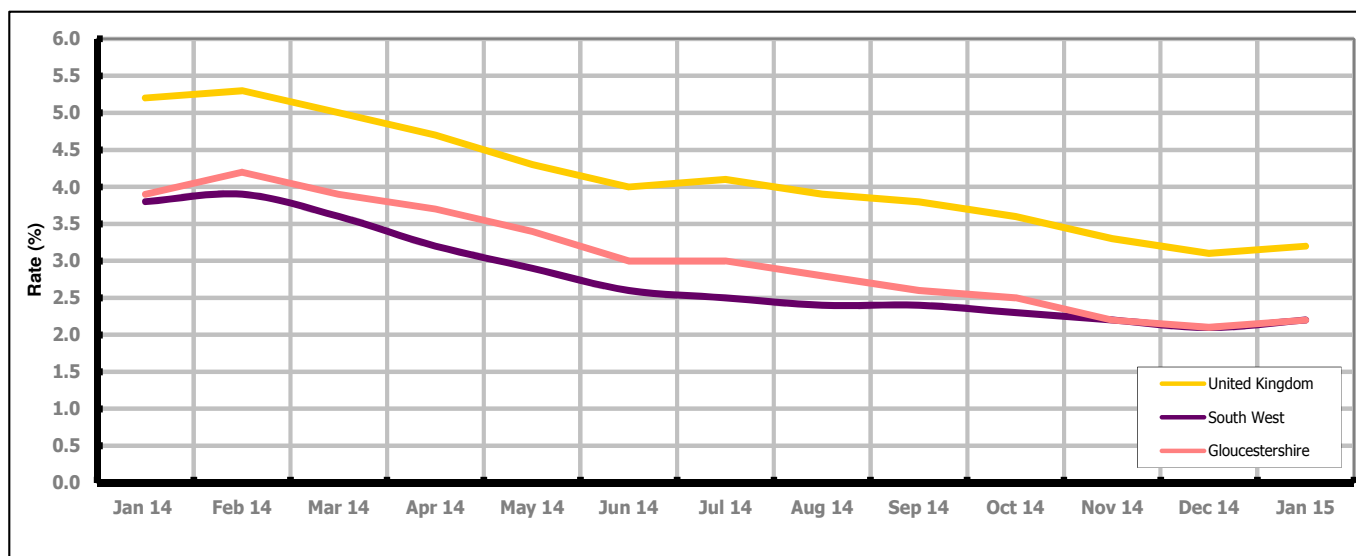


Figure 22 shows Gloucestershire's 18-24 claimant rate is the same as the South West average of 2.2%, but 1.0% lower than the UK average of 3.2%

Figure 23: Claimant Count for Gloucestershire over the past year

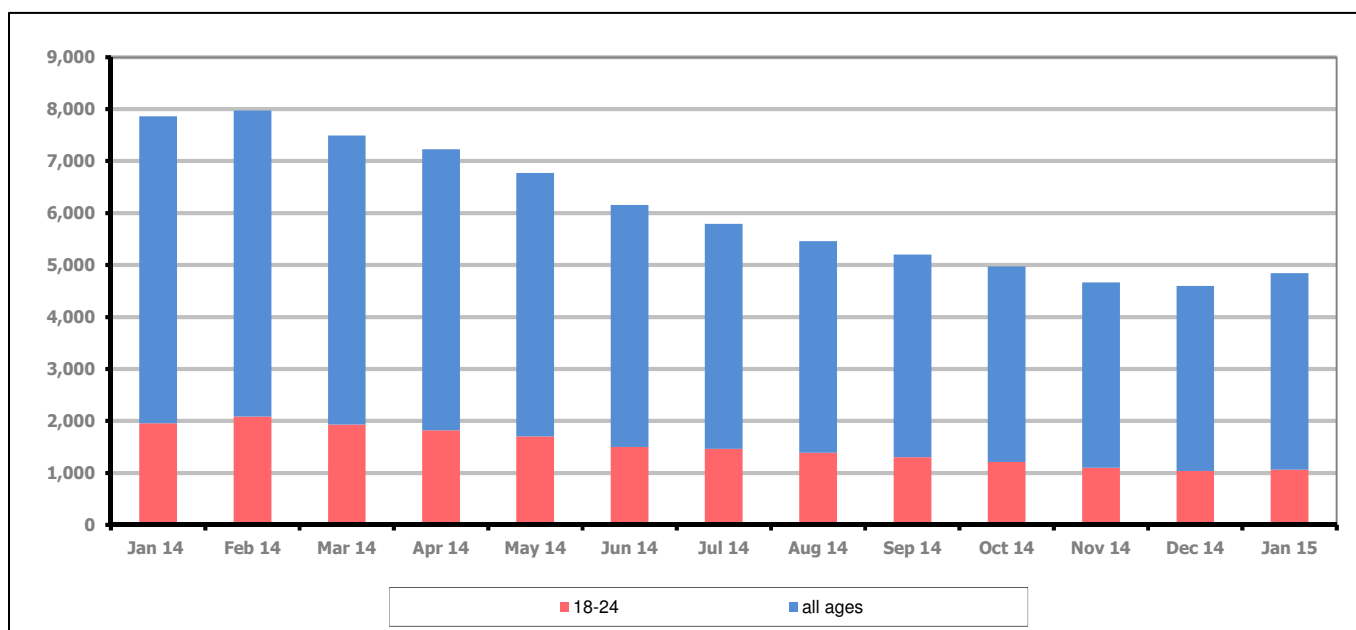


Figure 23 shows that in January 2015, 1,065 people aged 18-24 were claiming Job Seekers Allowance in Gloucestershire, this represents 22.0% of total working age claimants.

PART 6: YOUTH UNEMPLOYMENT

Youth Claimant Rate and Claimant Count

Figure 24: Youth Claimant Rate for Gloucestershire, the South West and UK over the past year

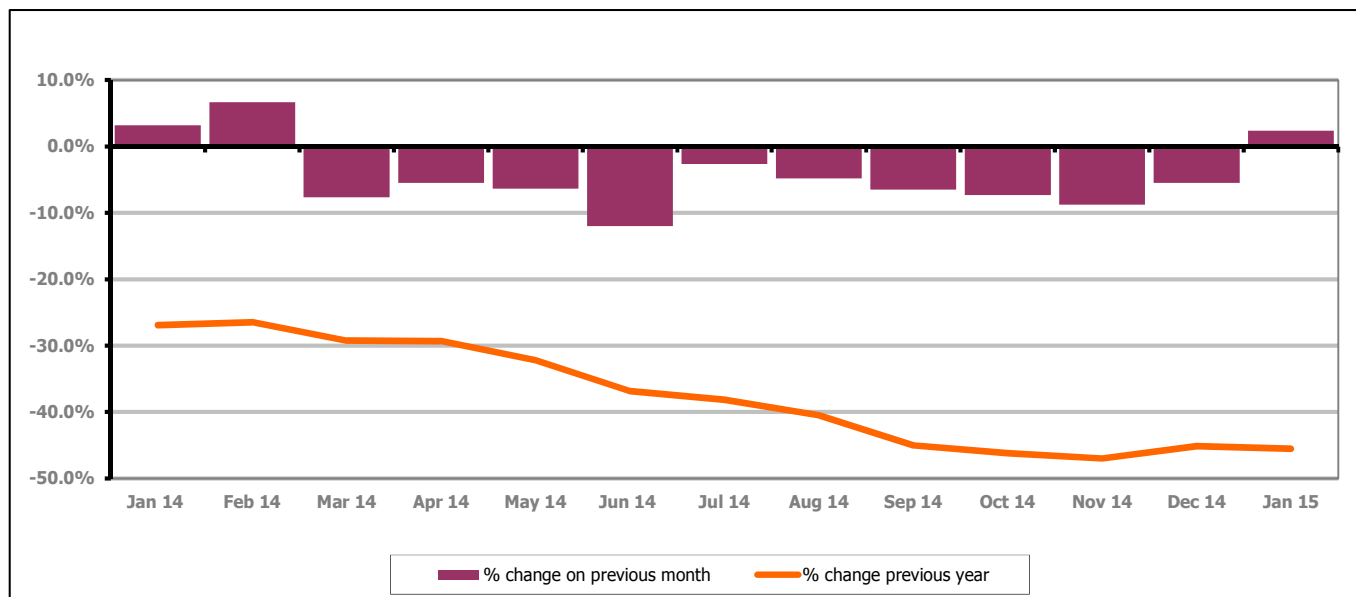


Figure 24 shows the number of young claimants increased in January 2015 by 2.4% this represented 25 people. Over the last year the number of young claimants fell by 45.5% or 890 people.

Youth unemployment and duration of claim

Figure 25: Duration of claim in the 18-24 year age group

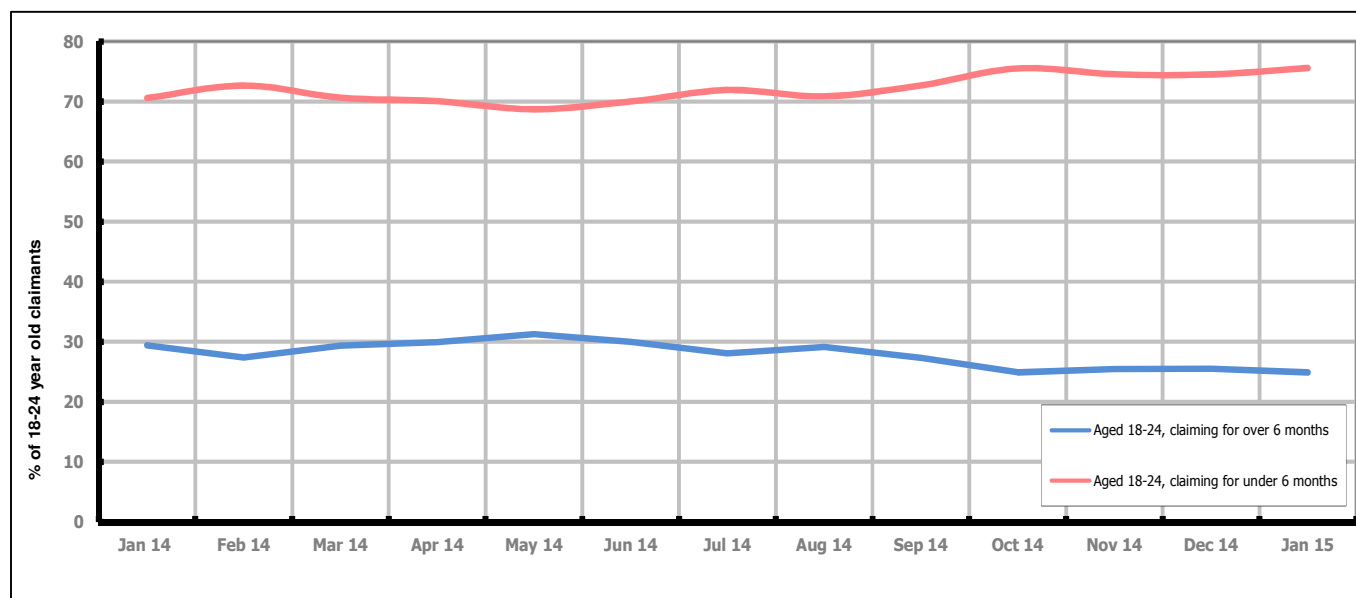


Figure 25 shows the proportion of 18-24 year olds claiming for less than six months increased from 74.5% of 18-24 year old claimants in December 2014 to 75.6% in January 2015. During the same period those claiming for more then six months decreased from 25.5% to 24.9%.

PART 7: YOUNG PEOPLE NOT IN EDUCATION, EMPLOYMENT OR TRAINING (NEET) IN GLOUCESTERSHIRE

Data provided by Gloucestershire Youth Support Team on the situation of young people (16-18) in Gloucestershire who are not in education, employment or formal training.

Gloucestershire Youth Support Team is required to report performance with the 16-18 age range against nationally defined criteria for counting the NEET group. The NEET group includes young people actively seeking education, employment or training as well as those young people who are either not yet ready or who are unable to access these opportunities because of their personal circumstances. The figures quoted below include young people in both of these categories.

Summary

At the end of January 2015 there were 569 young people aged 16-18 not in education, employment or training in Gloucestershire and this figure translates into an adjusted (*) 16-18 NEET population of 3.80%. The total number of NEET increased by 5 young people in January 2015 compared to December 2014. Two districts had an increase in their NEET figures and four districts saw a decrease.

Total NEET Group by District Area

January 2015 NEET data

	Cheltenham	Cotswold	Forest	Gloucester	Stroud	Tewkesbury	Total
Total NEET	103	69	74	183	74	66	596
Cohort	2663	2134	2124	4661	2977	1798	16357
% NEET	3.9	3.2	3.5	3.9	2.5	4.1	3.80

If you would like to receive any further information on Gloucestershire's NEET strategy then please contact Ruth.Critchlow@gloucestershire.gov.uk or telephone 01452 426900.

(*) Adjustment includes a proportion of young people aged 16-18 whose outcomes are not-known to Gloucestershire Youth Support Team.