

A435 Cheltenham to Bishop's Cleeve Cycleway: Section 2 Phase 1

Progress update 2

Montel Civil Engineering has been appointed by Gloucestershire County Council as the main contractor to complete Section 2 Phase 1 of the A435 Cheltenham to Bishop's Cleeve Cycleway. This phase, from Gloucestershire and Warwickshire Steam Railway (GWSR) bridge to Bishop's Cleeve Roundabout and Wellington Road to Centre Cross Drive commenced on Monday 6th January, with an anticipated completion by end of Autumn 2025.

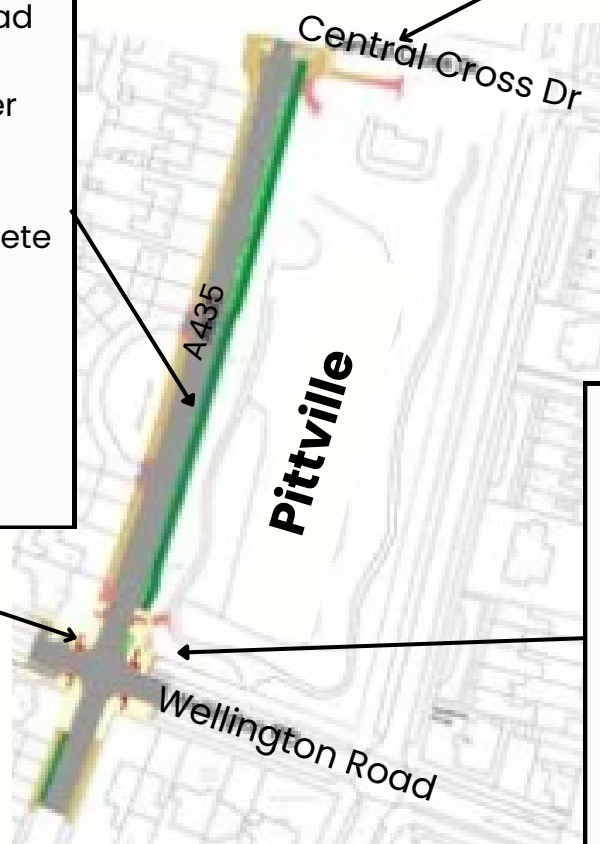
Important Information

During week commencing 10th March, we will not be working on site due to Cheltenham Festival. Given the high volume of pedestrians and vehicles, we want to avoid causing any further disruption to the area. However, security will be present on-site to ensure our safety barriers remain in good condition. Work will resume on Monday 17th March.

A435 Evesham Road / Wellington Road junction progress

Starting week commencing 17th March, we will begin work on the A435 between Wellington Road and Central Cross Drive and works to the north west corner will commence the following week. BT and CityFibre cable diversions are already complete in those areas, allowing us to focus on constructing the footway and cycleway by excavating to formation level and installing kerbs and edgings.

Temporary site compound location.



The northeast corner is substantially complete. The site team has installed traffic signal ducts, kerbs and tactile paving, and the corner has now been resurfaced. The final task is applying anti-skid surfacing for the cycling, which will be completed towards the end of the works to the junction.

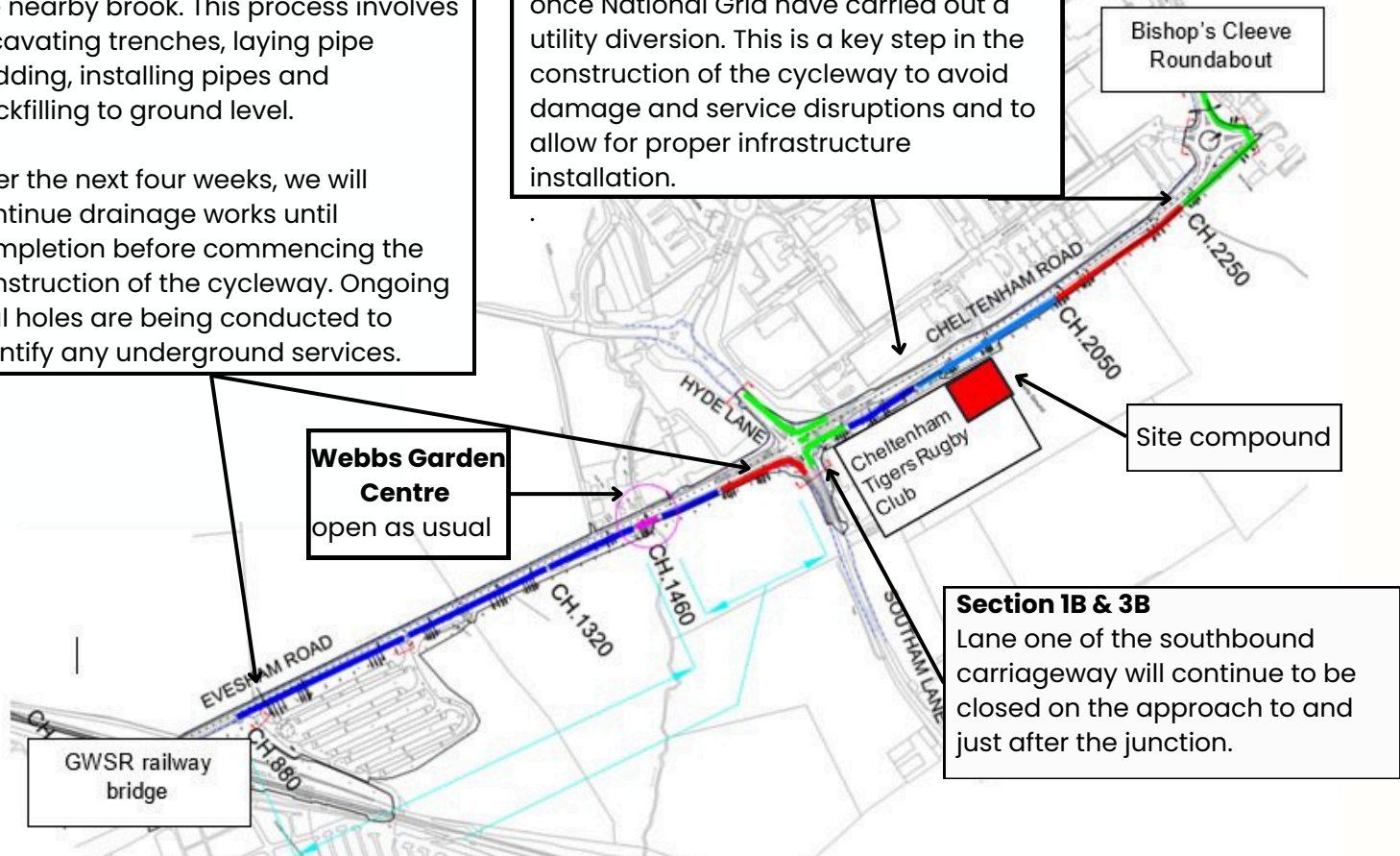
Please contact suzanne.wright@montel-group.com if you have any specific queries or concerns or would like to be added to the mailing list.

A435 Evesham Road (GWSR bridge to Bishop's Cleeve roundabout) progress

We have completed site clearance and begun drainage work on this section. Drainage is a crucial part of the project to prevent flooding due to the nearby brook. This process involves excavating trenches, laying pipe bedding, installing pipes and backfilling to ground level.

Over the next four weeks, we will continue drainage works until completion before commencing the construction of the cycleway. Ongoing trial holes are being conducted to identify any underground services.

We have completed site clearance and conducted trial holes to identify existing drainage. Drainage works will commence towards the end of March once National Grid have carried out a utility diversion. This is a key step in the construction of the cycleway to avoid damage and service disruptions and to allow for proper infrastructure installation.



Site photos



Traffic management

Cones will remain in place along the kerb line, with most work carried out off-line in the verge for carriageway and cycleway construction. Temporary traffic signals will be required full-time on the A435 between GWSR bridge and Bishop's Cleeve roundabout as works progress closer to the carriageway. We apologise for any disruption this may cause.

From 17th March, temporary two-way traffic signals will also be required for approximately two days whilst we complete the fencing between Cheltenham Racecourse and the GWSR bridge.