

# The proportion of residents living in Gloucestershire whose main language is not English (English or Welsh in Wales) and cannot speak English well or at all, by Lower Super Output Area, Census 2021

This map uses the 2021 LSOA boundaries

## Key

### Percentage

0% (all figures less than 0.1%)

0.1 - 1.0%

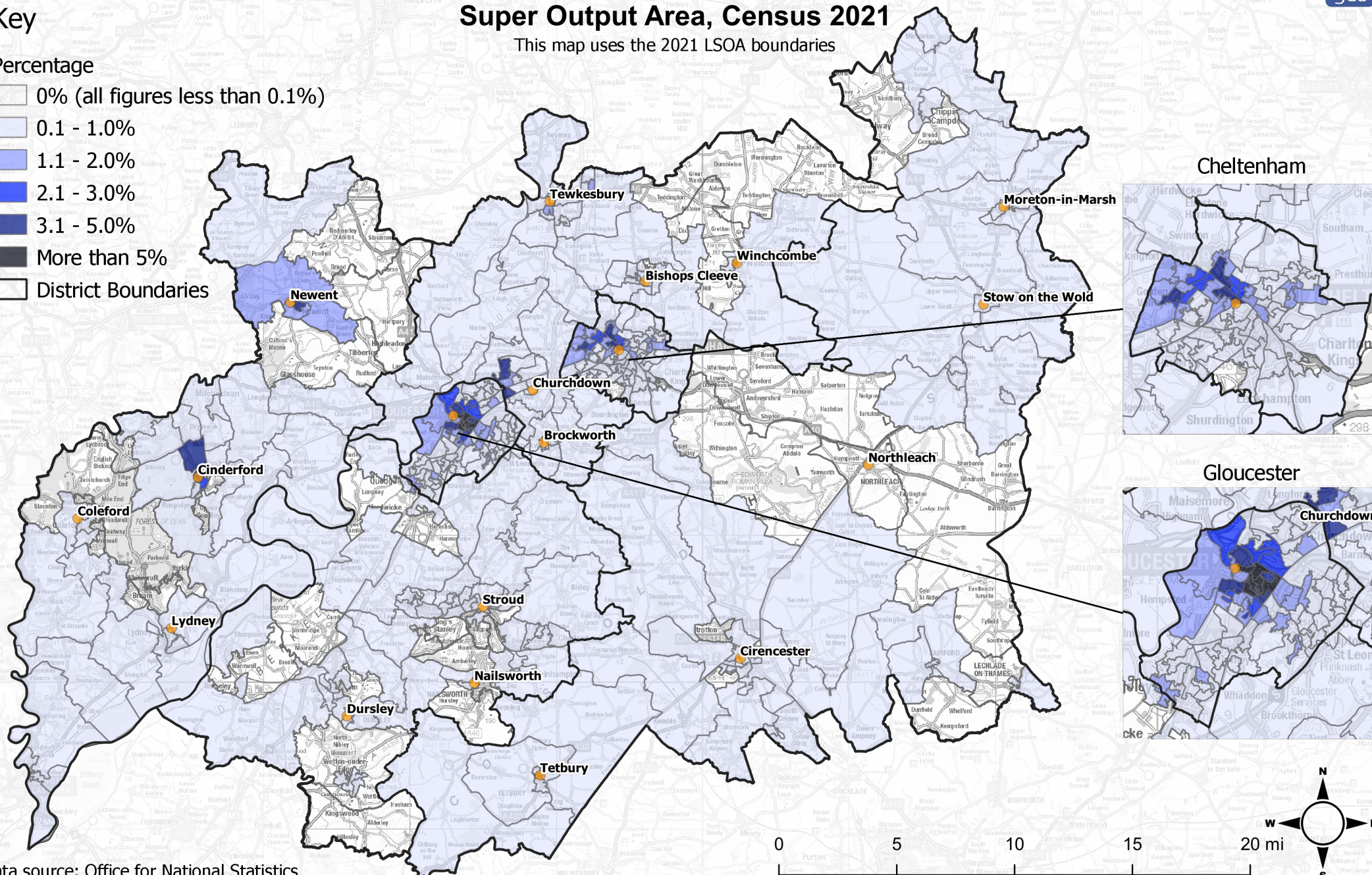
1.1 - 2.0%

2.1 - 3.0%

3.1 - 5.0%

More than 5%

District Boundaries



Data source: Office for National Statistics