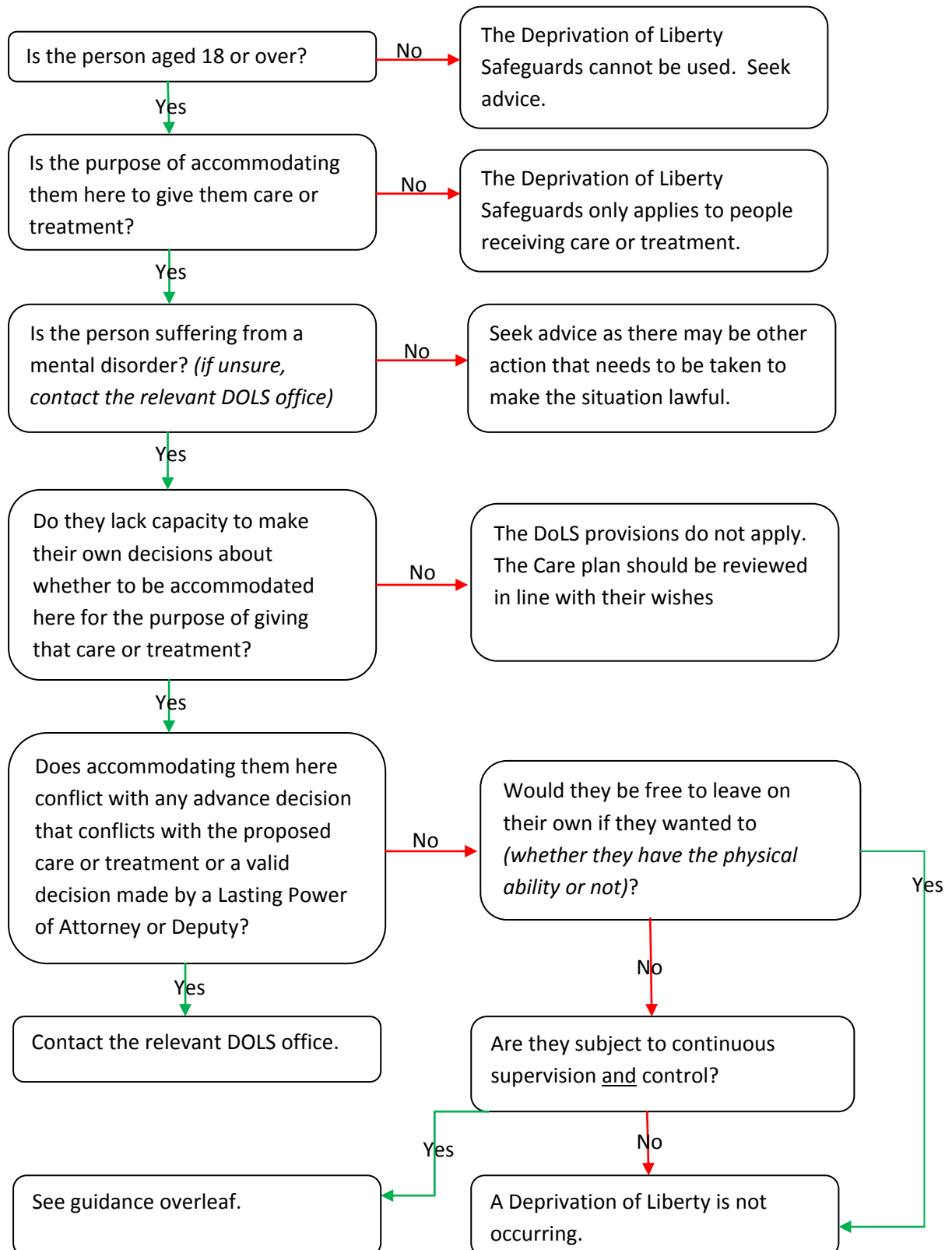


Deprivation of Liberty Safeguards- flowchart for Managing Authorities-
identifying a possible deprivation of liberty



Where a potential deprivation of liberty is identified, a full exploration of the alternative ways of providing the care and/ or treatment should be undertaken, in order to identify any less restrictive ways of providing that care which will avoid a deprivation of liberty.

Where the care/ treatment plan for an individual lacking capacity will unavoidably result in a deprivation of liberty, judged to be in that person's best interests, this **MUST** be authorised.

Process

You must contact the relevant DoLS Service/ Supervisory Body for advice and complete form 4 (application), or form 1(urgent authorisation) and 4, sign and send them to the relevant Supervisory Body (Local Authority). This must be done in a person centred way. We need as much information about the individual's circumstances as possible, as a minimum this should include:

- how long they have been with you
- what their support needs are
- how they feel about the arrangements
- an up to date capacity assessment

If a person's care is funded by a Local Authority, send the completed forms to that Local Authority. If the person is funding their own care, send the completed forms to the Local Authority covering the area where your care home is situated.

If the person is in hospital, send the completed forms to the Local Authority that covers the area where their home address is.

For a person who is of no fixed abode, send completed forms to the Local Authority covering the area where your care home is situated.

The Gloucestershire DoLS Service contact details are:

Deprivation of Liberty safeguards (DoLS) Service
Room 135, Shire Hall
Westgate Street
Gloucester
GL1 2TG

Tel: 01452-427557/426005

Email: dolsservice@gloucestershire.gov.uk

Customer Services Help Desk Fax: 01452-427359