

Unemployment Bulletin

Issue 87 October 2015

Contents

Part 1: Summary

A summary of unemployment data at district, County, regional and national level

1

Part 2: County

Unemployment figures for the County compared to the South West and the rest of the UK

3

Part 3: Districts

A comparative break down of unemployment figures by district

4

Part 4: Wards

Further breakdown of unemployment figures by ward:

Cheltenham	6
Cotswolds	8
Forest of Dean	10
Gloucester	12
Stroud	14
Tewkesbury	16

Part 5: Map

Distribution of claimant rate across Gloucestershire

18

Part 6: Youth Unemployment

Unemployment data for the 18-24 year old age group

20

Part 7: Young People

Data about Young People Not in Education, Employment or Training (NEET)

22

Produced by:

Strategic Needs Analysis Team
Strategy and Challenge
Gloucestershire County Council
November 2015

The Claimant Count is a measure of the number of people who are unemployed and claiming benefits. From 1996 until the recent introduction of Universal Credit, this was based on the number of people claiming Jobseeker's Allowance. However, since its introduction some unemployment benefit claimants will be claiming Universal Credit instead.

To reflect this change, the Claimant Count has been expanded to include people claiming Jobseeker's Allowance plus those who claim Universal Credit and who are out of work. For more information about Universal Credit please see the [ONS website](http://www.ons.gov.uk).

INTRODUCTION

The Unemployment Bulletin provides a monthly update on unemployment data for Gloucestershire, the South West region and the United Kingdom. It is produced by the Strategic Needs Analysis Team in the County Council's Strategy and Challenge function. The data is sourced from the Office for National Statistics via Nomis (www.nomis.co.uk).

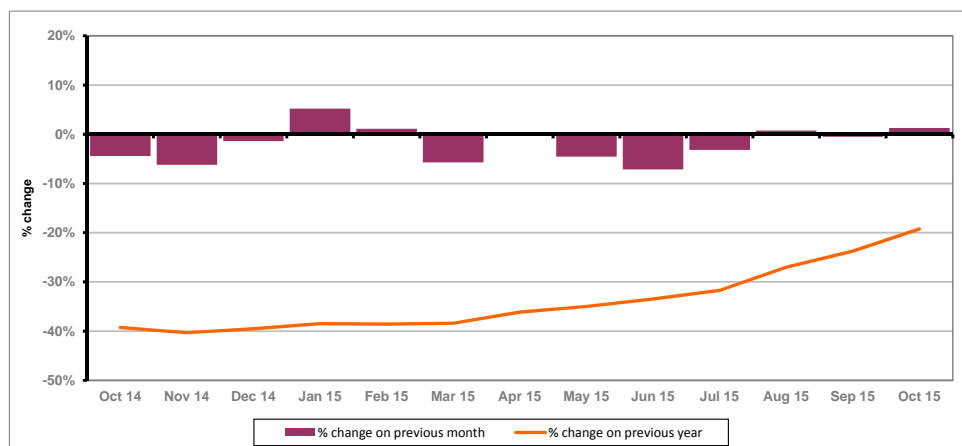
PART 1: SUMMARY

The claimant rate in Gloucestershire was 1.1% in October 2015. This remained the same as the September 2015 figure. The UK and the South West rate also remained the same as the previous month at 1.9% and 1.1% respectively. Gloucestershire's rate was the same as the South West average of 1.1%, and 0.8% lower than the UK average of 1.9%.

The claimant count in Gloucestershire in October 2015 increased by 50 people. The amount of people claiming in October 2015 was 1.3% higher than the number in September 2015. This compares to a 1.0% increase in the South West and a 1.2% decrease for the UK.

The year on year claimant count in Gloucestershire has increased since last month. The count was 19.2% lower in October 2015 than at the same point in the previous year as shown in the graph below.

Gloucestershire claimants - Month on Month and Year on Year change: October 2014 to October 2015



Source: ONS Crown Copyright Reserved

DISTRICTS AT A GLANCE

At a glance unemployment information grouped by district. Includes:

Claim count: Total number of people claiming Job Seekers Allowance and Universal Credit who are not in work in October 2015

Compared to last month: How much larger/smaller October's claimant count is compared to September, expressed as a %

Claimant rate: The % of working population claiming Job Seekers Allowance and Universal Credit who are not in work in October 2015

Highest claiming ward: The ward with the highest claim count in that district and the rate

CHELTENHAM BOROUGH

Claim count:	765
Compared to last month:	3.4%
Claimant rate:	1.0%
Highest claiming ward	Hesters Way (2.1%)

GLOUCESTER CITY

Claim count:	1,340
Compared to last month:	-1.5%
Claimant rate:	1.7%
Highest claiming ward	Westgate (3.7%)

COTSWOLD DISTRICT

Claim count:	350
Compared to last month:	7.7%
Claimant rate:	0.7%
Highest claiming ward	Cirencester Watermoor (1.8%)

STROUD DISTRICT

Claim count:	500
Compared to last month:	4.2%
Claimant rate:	0.7%
Highest claiming ward	Slade (1.9%)

FOREST OF DEAN

Claim count:	570
Compared to last month:	0.9%
Claimant rate:	1.1%
Highest claiming ward	Cinderford West (2.4%)

TEWKESBURY BOROUGH

Claim count:	510
Compared to last month:	0.0%
Claimant rate:	1.0%
Highest claiming ward	Tewkesbury Prior's Park (2.9%)

PART 2: UK, SW AND GLOUCESTERSHIRE INDICATORS

The unemployment situation in Gloucestershire compared to the South West and the UK.

Claimant Rate

Figure 1: Claimant Rate for Gloucestershire, the South West and UK over the past year

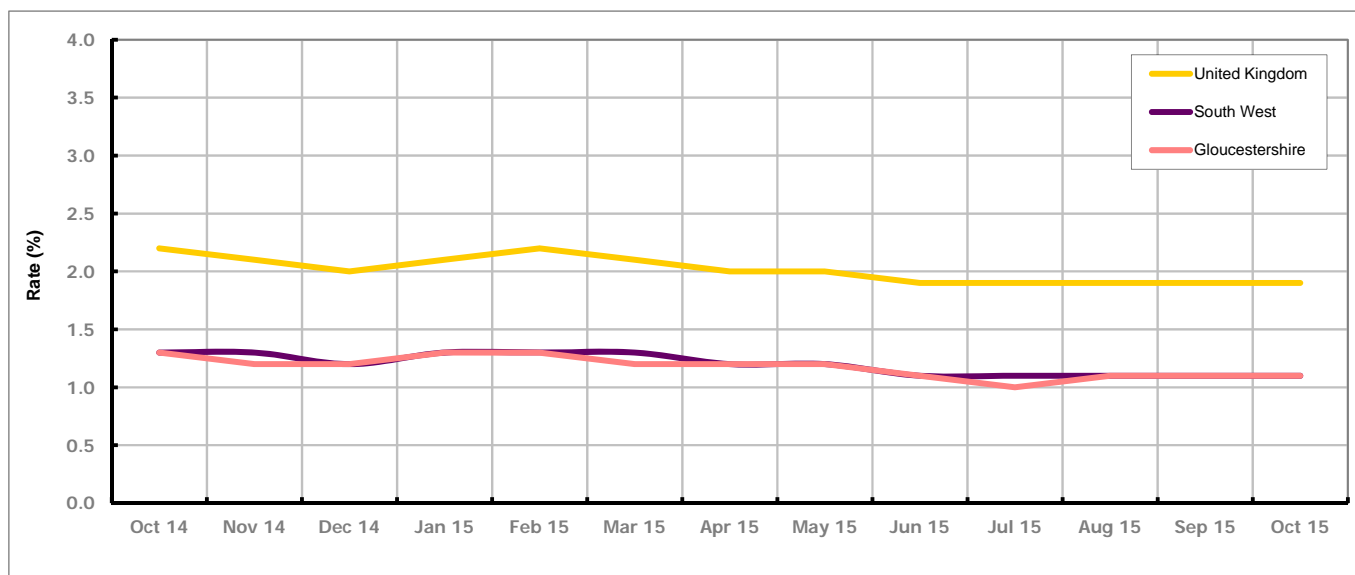


Figure 1 shows the claimant rate for Gloucestershire at 1.1% in October 2015. The Gloucestershire rate has been the same as the South West average since October 2014, with the exception of November, March and July when it was lower. It has been persistently lower by approximately 0.8% against the UK average. The rate has remained the same since August 2015.

Claimant Count

Table 1: Analysis of UK, South West and Gloucestershire Claimant Counts

Area	Claimant Count in October 2015	% change on September 2015	Average % change over the last six months	Consecutive months decreasing
UK	759,305	-1.2%	-1.0%	2
South West	37,020	1.0%	-0.6%	0
Gloucestershire	4,030	1.3%	-1.5%	0

Table 1 shows that in October 2015, the number of claimants in Gloucestershire was 1.3% higher than the number in September 2015.

The average change in claimants in Gloucestershire for the six months to October 2015 was -1.5%.

PART 3: LOCAL AUTHORITY DISTRICT ANALYSIS

Claimant Rate and Claimant Count

Figure 2: Claimant Rate (%) across Gloucestershire - October 2015

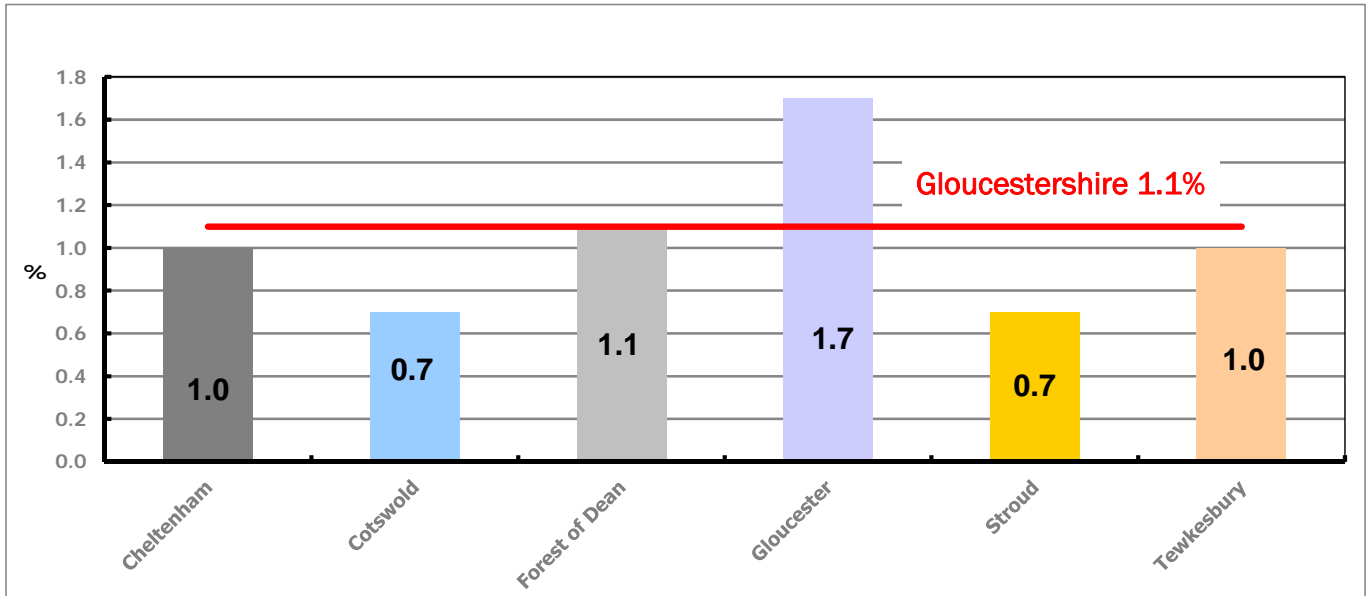


Figure 2 shows the claimant rate for October 2015 in Gloucestershire. Between September 2015 and October 2015, the rate in Gloucester decreased, while the rate in Cheltenham, Cotswold, Forest of Dean and Stroud increased. The rate in Tewkesbury stayed the same.

Figure 3: Total claimants over the past year across Gloucestershire Districts

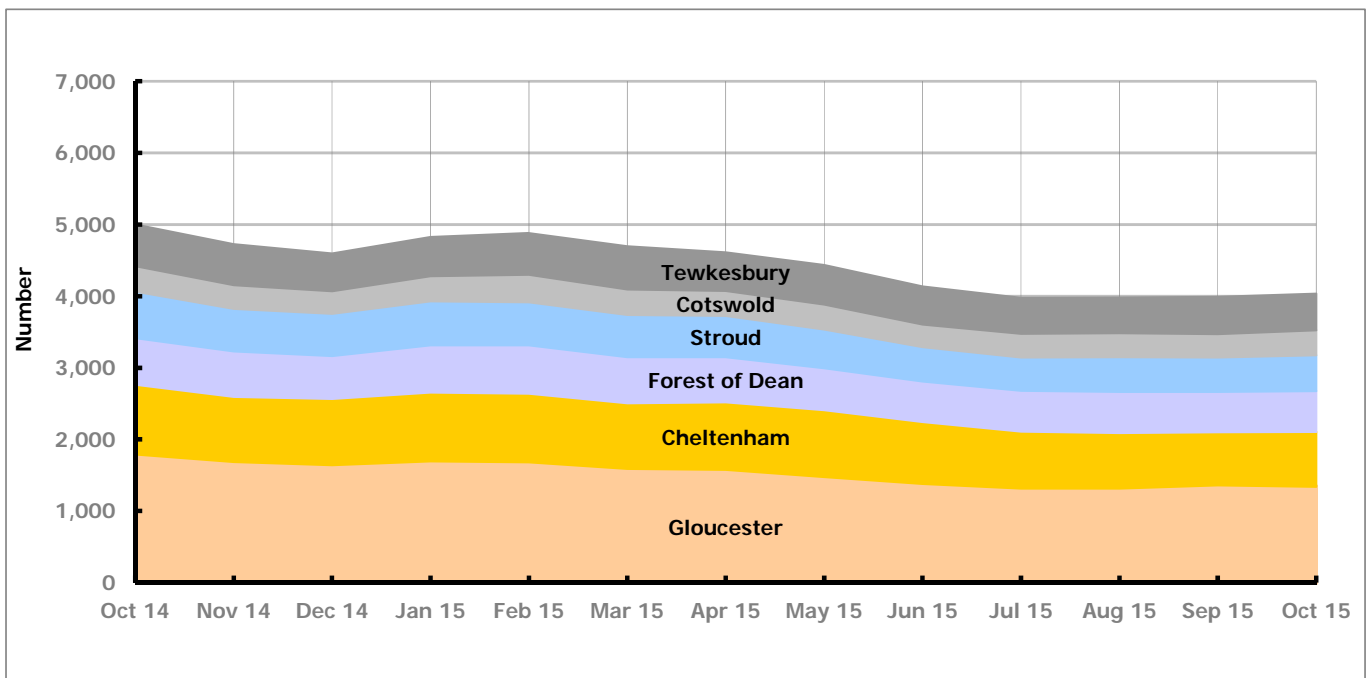


Figure 3 shows the overall claimant count by district over the past year. The number of claimants has decreased over the last year, with the exception of January, February, August and October 2015 when there was an increase.

Table 2: Analysis of Gloucestershire and District Claimant Counts

Total	Oct 15 Number	Oct 15 Rate	Sep 15 Number	Sep 15 Rate	Monthly change	% monthly change	Monthly change of rate
Gloucestershire	4,030	1.1	3,980	1.1	50	1.3%	0.0
Cheltenham	765	1.0	740	1.0	25	3.4%	0.0
Cotswold	350	0.7	325	0.7	25	7.7%	0.0
Forest of Dean	570	1.1	565	1.1	5	0.9%	0.0
Gloucester	1,340	1.7	1,360	1.7	-20	-1.5%	0.0
Stroud	500	0.7	480	0.7	20	4.2%	0.0
Tewkesbury	510	1.0	510	1.0	0	0.0%	0.0

Table 2 shows the change in the claimant count in October 2015 compared to September 2015. All districts saw an increase in the number of claimants, except Gloucester which saw a decrease and Tewkesbury which stayed the same.

Table 3: Analysis of Male Gloucestershire and District Claimant Counts

Male	Oct 15 Number	Oct 15 Rate	Sep 15 Number	Sep 15 Rate	Monthly change	% monthly change	Monthly change of rate
Gloucestershire	2,630	1.4	2,570	1.4	60	2.3%	0.0
Cheltenham	485	1.3	475	1.3	10	2.1%	0.0
Cotswold	220	0.9	200	0.8	20	10.0%	0.1
Forest of Dean	390	1.6	370	1.5	20	5.4%	0.1
Gloucester	895	2.2	915	2.3	-20	-2.2%	-0.1
Stroud	320	0.9	290	0.8	30	10.3%	0.1
Tewkesbury	320	1.3	320	1.3	0	0.0%	0.0

Table 3 shows the change in the male claimant count in October 2015 compared to September 2015. All districts saw an increase in the number of male claimants, except Gloucester which saw a decrease and Tewkesbury which stayed the same.

Table 4: Analysis of Female Gloucestershire and District Claimant Counts

Female	Oct 15 Number	Oct 15 Rate	Sep 15 Number	Sep 15 Rate	Monthly change	% monthly change	Monthly change of rate
Gloucestershire	1,400	0.7	1,410	0.7	-10	-0.7%	0.0
Cheltenham	275	0.7	265	0.7	10	3.8%	0.0
Cotswold	130	0.5	130	0.5	0	0.0%	0.0
Forest of Dean	175	0.7	195	0.8	-20	-10.3%	-0.1
Gloucester	445	1.1	440	1.1	5	1.1%	0.0
Stroud	185	0.5	190	0.5	-5	-2.6%	0.0
Tewkesbury	190	0.7	190	0.7	0	0.0%	0.0

Table 4 shows the change in the female claimant count in October 2015 compared to September 2015. Cheltenham and Gloucester saw an increase in the number of female claimants, while the Forest of Dean and Stroud saw a decrease. Cotswold and Tewkesbury stayed the same.

PART 4: LOCAL AUTHORITY DISTRICT AND WARD ANALYSIS

This section covers the six districts and a comparison of their constituent wards.

4.1 Cheltenham Borough

Claimant Rate and Claimant Count

Figure 4: Cheltenham Borough claimant rate over the last year

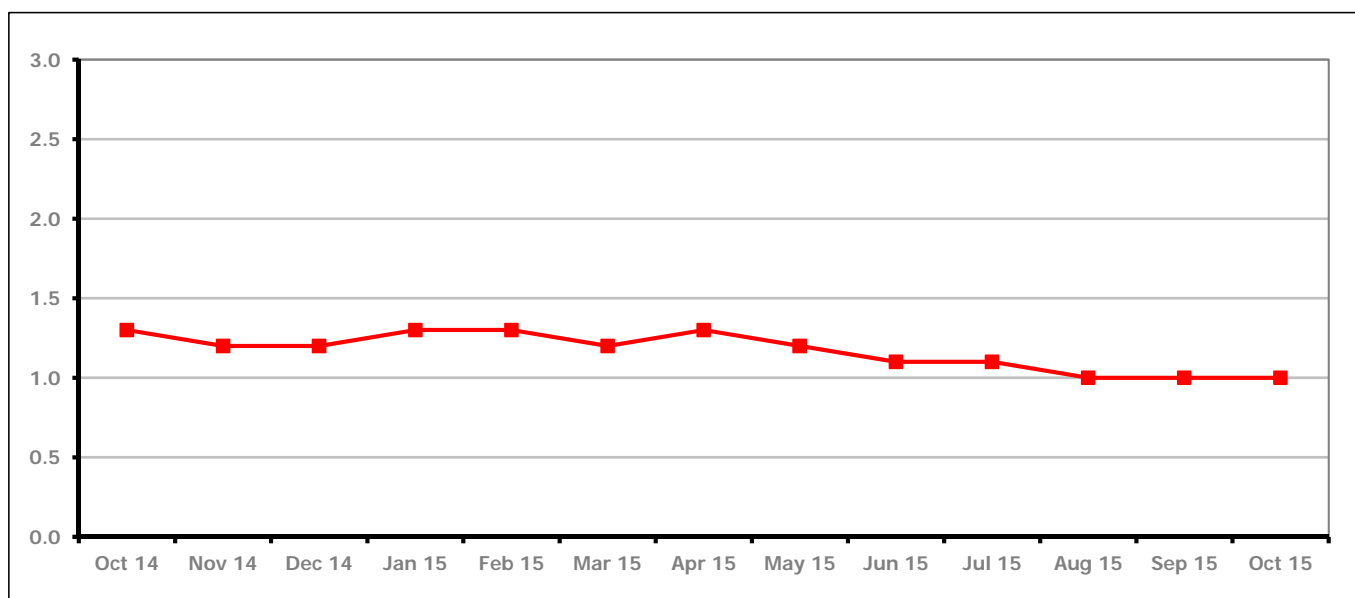


Figure 4 shows the claimant rate in Cheltenham remained the same as last month at 1.0%.

Figure 5: Cheltenham Borough claimants - Month on Month and Year on Year change

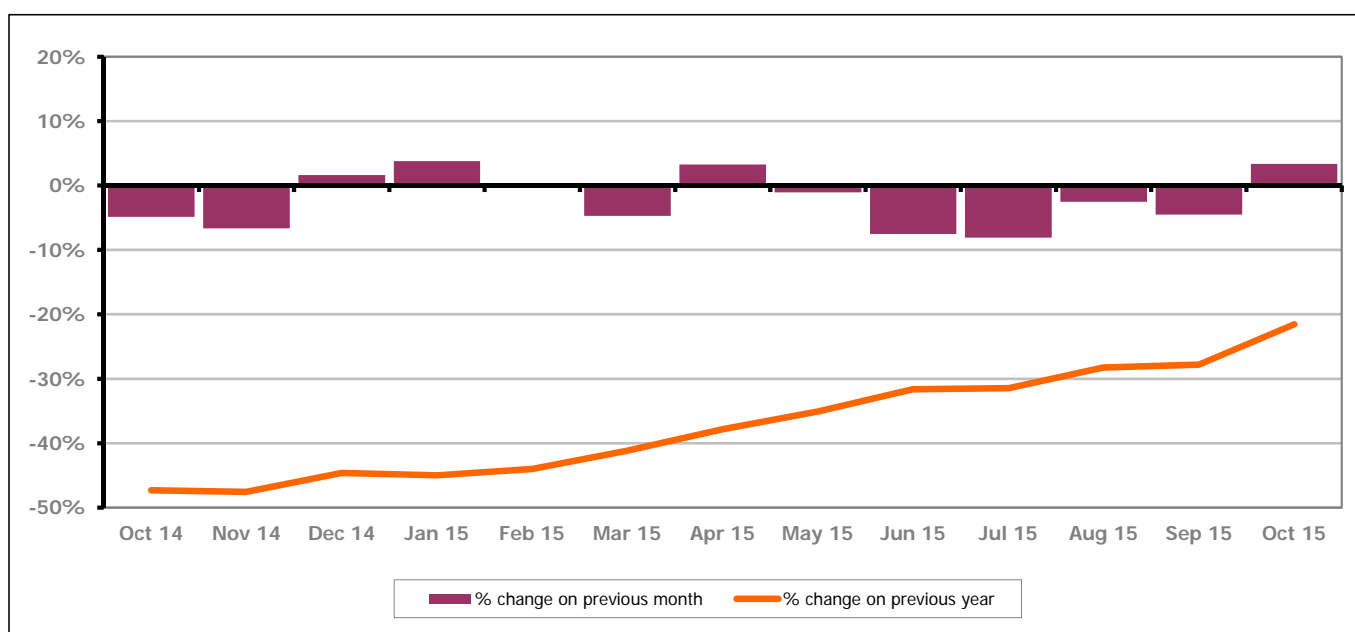


Figure 5 shows the claimant count increased by 3.4% since last month. The change on the previous year has increased between September and October 2015 to -21.5%.

PART 4: LOCAL AUTHORITY DISTRICT AND WARD ANALYSIS

4.1 Cheltenham Borough continued...

Figure 6: Claimant rates across Cheltenham Borough wards - October 2015

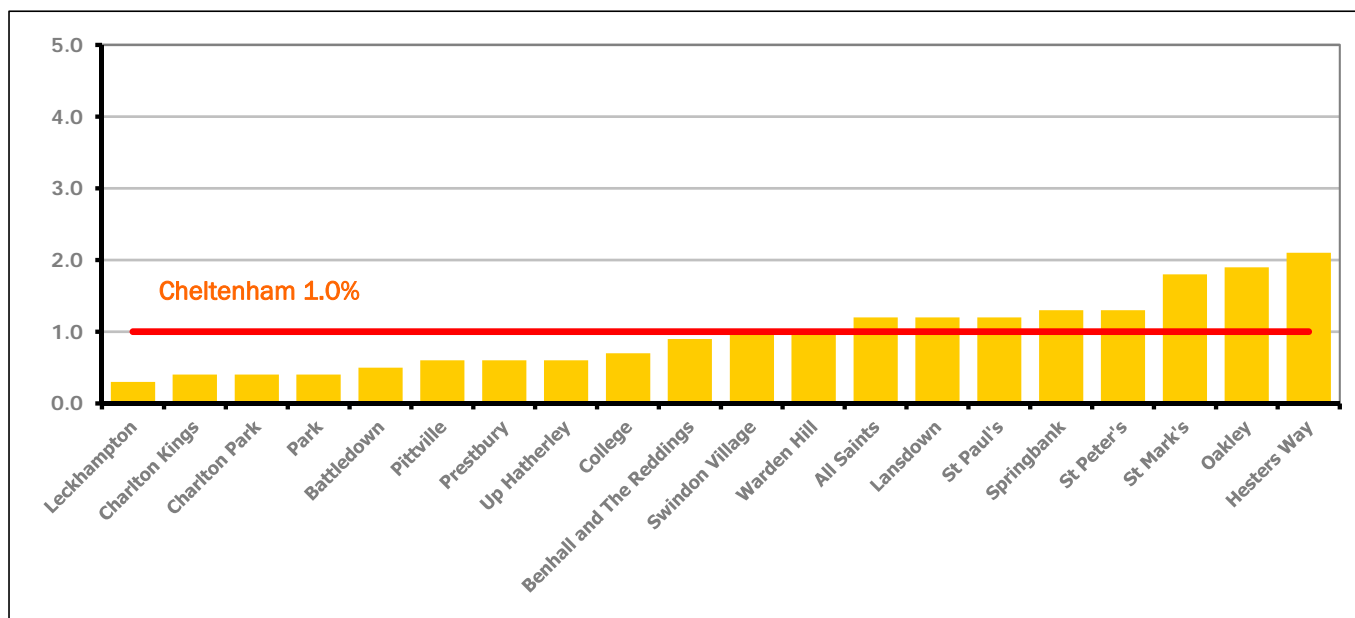


Figure 6 shows the claimant rates for Cheltenham Borough wards. The red line represents the average claimant rate across the Borough of 1.0%. Eight wards lie above the average.

Table 5: Analysis of Claimant Count at Cheltenham Borough ward level - October 2015

District	Ward	Rate	Rank*
Cheltenham	Leckhampton	0.3	10
Cheltenham	Charlton Kings	0.4	14
Cheltenham	Charlton Park	0.4	14
Cheltenham	Park	0.4	14
Cheltenham	Battledown	0.5	33
Cheltenham	Pittville	0.6	41
Cheltenham	Prestbury	0.6	41
Cheltenham	Up Hatherley	0.6	41
Cheltenham	College	0.7	55
Cheltenham	Benhall and The Reddings	0.9	81
Cheltenham	Swindon Village	1.0	95
Cheltenham	Warden Hill	1.0	95
Cheltenham	All Saints	1.2	110
Cheltenham	Lansdown	1.2	110
Cheltenham	St Paul's	1.2	110
Cheltenham	Springbank	1.3	118
Cheltenham	St Peter's	1.3	118
Cheltenham	St Mark's	1.8	127
Cheltenham	Oakley	1.9	131
Cheltenham	Hesters Way	2.1	134

bottom 10% of county
 first quartile of county
 second quartile of county
 third quartile of county
 fourth quartile of county
 highest 10% of county

* 1 = "best" and 142 = "worst"

Table 5 shows overall claimant rates for Cheltenham Borough wards and their position relative to all wards in Gloucestershire.

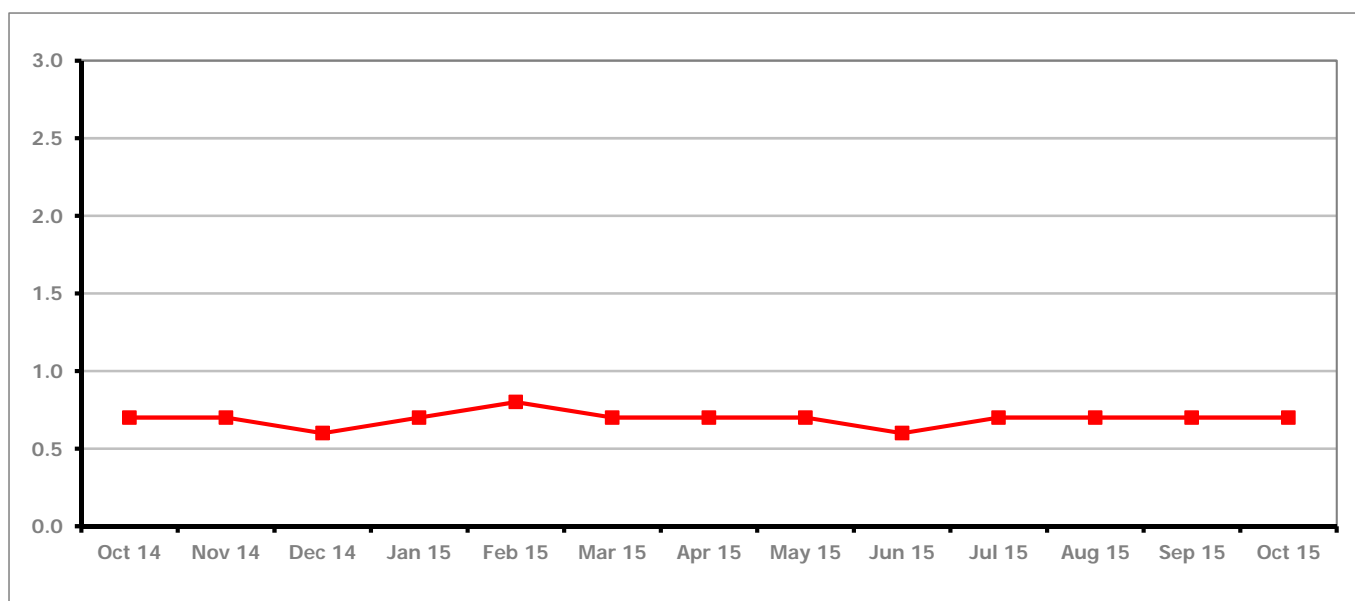
PART 4: LOCAL AUTHORITY DISTRICT AND WARD ANALYSIS**4.2 Cotswold District****Claimant Rate and Claimant Count***Figure 7: Cotswold District claimant rate over the last year*

Figure 7 shows the claimant rate in Cotswold District remained the same as last month at 0.7%.

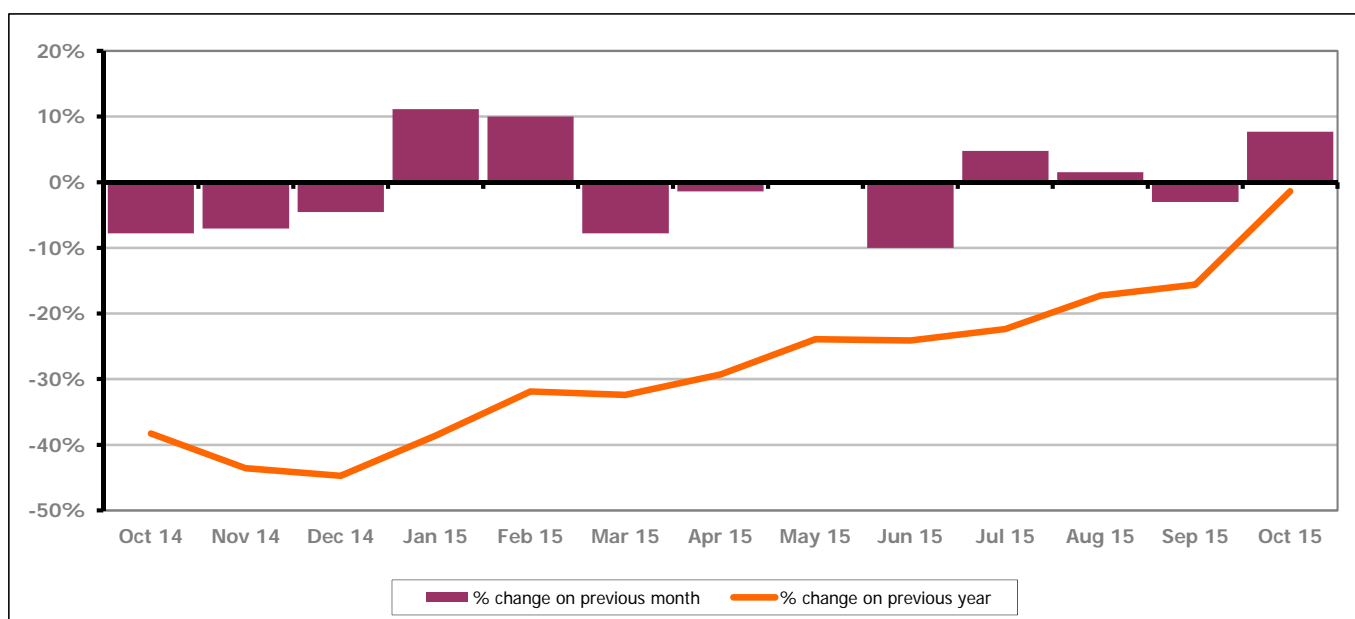
Figure 8: Cotswold District claimants - Month on Month and Year on Year change

Figure 8 shows the claimant count increased by 7.7% since September 2015. The change on the previous year has increased between September and October 2015 to -1.4%.

PART 4: LOCAL AUTHORITY DISTRICT AND WARD ANALYSIS

4.2 Cotswold District continued...

Figure 9: Claimant rates across Cotswold District wards - October 2015

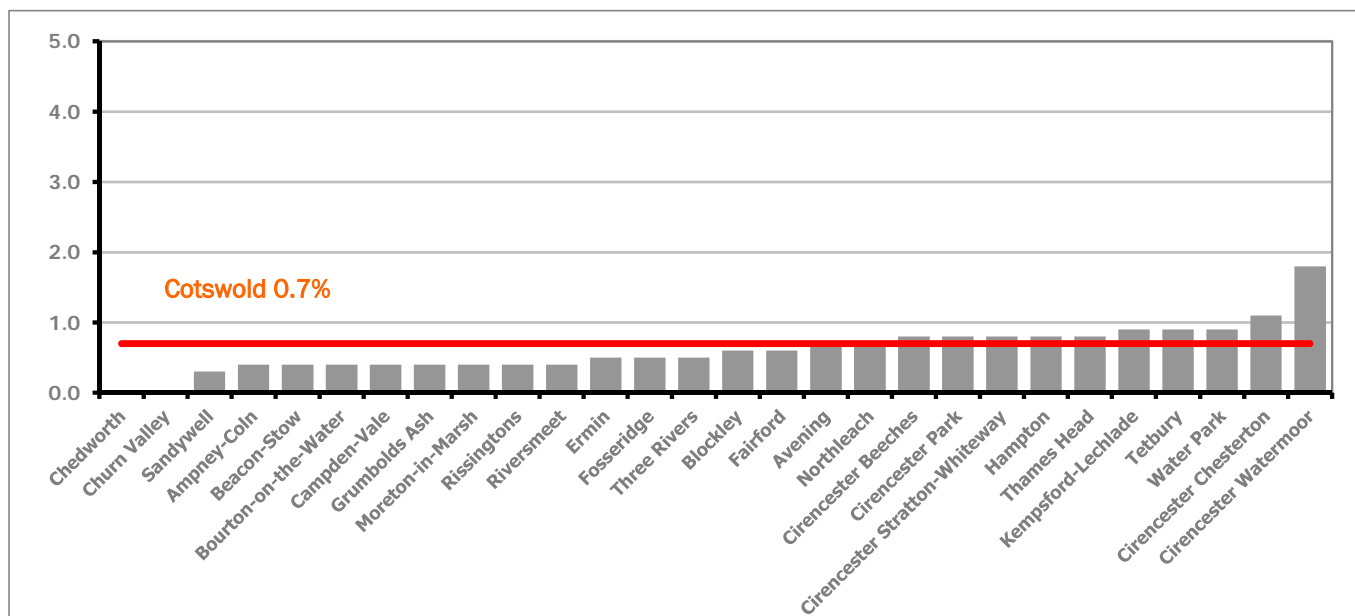
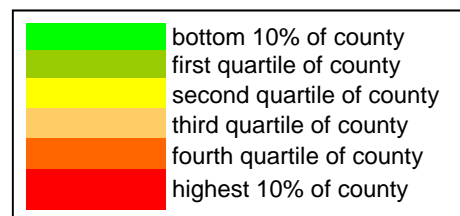


Figure 9 shows the claimant rates for Cotswold District wards. The red line represents the average claimant rate across the District of 0.7%. Ten wards lie above the average.

Table 6: Analysis of Claimant Count at Cotswold District ward level - October 2015

District	Ward	Rate	Rank*
Cotswolds	Chedworth	<0.3	1
Cotswolds	Churn Valley	<0.3	1
Cotswolds	Sandywell	0.3	10
Cotswolds	Ampney-Coln	0.4	14
Cotswolds	Beacon-Stow	0.4	14
Cotswolds	Bourton-on-the-Water	0.4	14
Cotswolds	Campden-Vale	0.4	14
Cotswolds	Grumbolds Ash	0.4	14
Cotswolds	Moreton-in-Marsh	0.4	14
Cotswolds	Rissingtons	0.4	14
Cotswolds	Riversmeet	0.4	14
Cotswolds	Ermin	0.5	33
Cotswolds	Fosseridge	0.5	33
Cotswolds	Three Rivers	0.5	33
Cotswolds	Blockley	0.6	41
Cotswolds	Fairford	0.6	41
Cotswolds	Avening	0.7	55
Cotswolds	Northleach	0.7	55
Cotswolds	Cirencester Beeches	0.8	73
Cotswolds	Cirencester Park	0.8	73
Cotswolds	Cirencester Stratton-Whiteway	0.8	73
Cotswolds	Hampton	0.8	73
Cotswolds	Thames Head	0.8	73
Cotswolds	Kempsford-Lechlade	0.9	81
Cotswolds	Tetbury	0.9	81
Cotswolds	Water Park	0.9	81
Cotswolds	Cirencester Chesterton	1.1	104
Cotswolds	Cirencester Watermoor	1.8	127



* 1 = "best" and 142 = "worst"

Table 6 shows overall claimant rates for Cotswold District wards and their position relative to all wards in Gloucestershire.

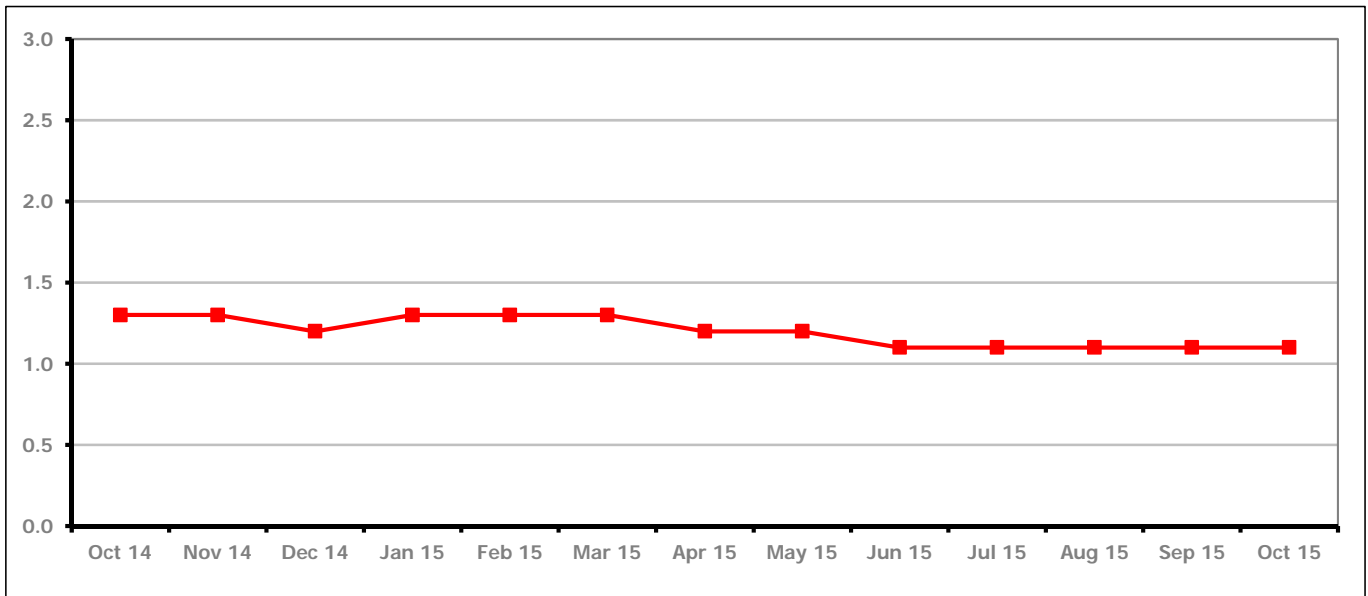
PART 4: LOCAL AUTHORITY DISTRICT AND WARD ANALYSIS**4.3 Forest of Dean District****Claimant Rate and Claimant Count***Figure 10: Forest of Dean District claimant rate over the last year*

Figure 10 shows the claimant rate in the Forest of Dean remained the same as last month at 1.1%.

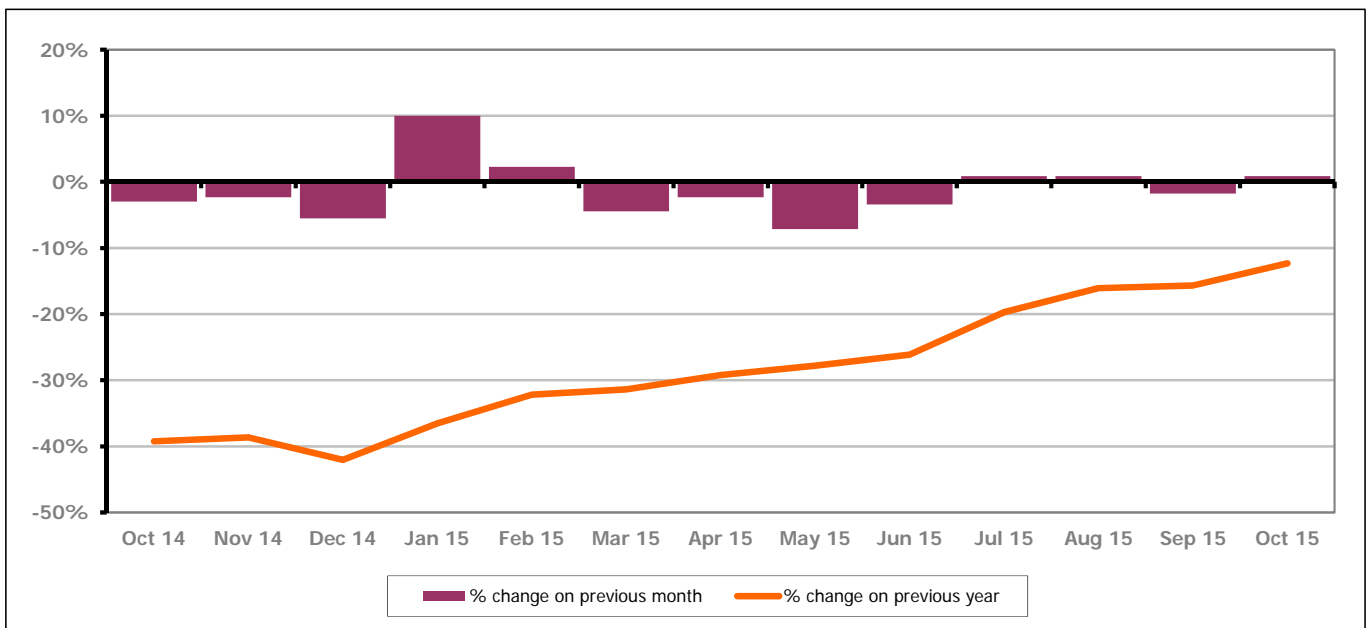
Figure 11: Forest of Dean District claimants - Month on Month and Year on Year change

Figure 11 shows the claimant count increased by 0.9% since September 2015. The change on the previous year has increased between September and October 2015 to -12.3%.

PART 4: LOCAL AUTHORITY DISTRICT AND WARD ANALYSIS

4.3 Forest of Dean District continued...

Figure 12: Claimant rates across Forest of Dean District wards - October 2015

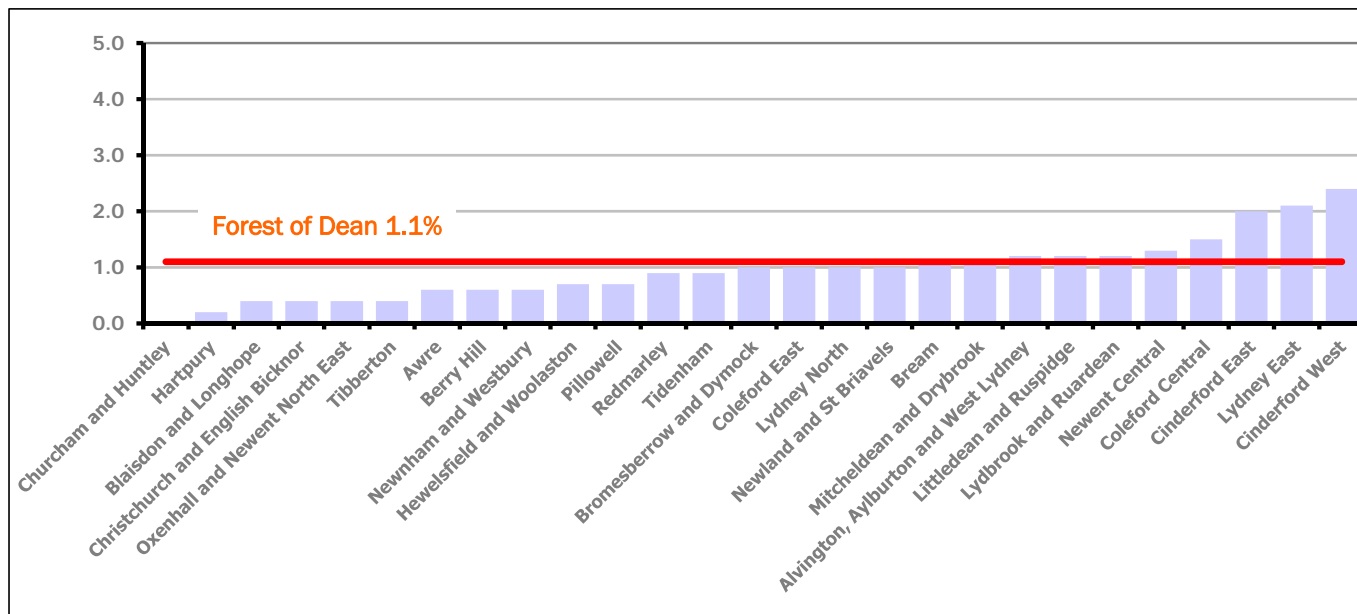
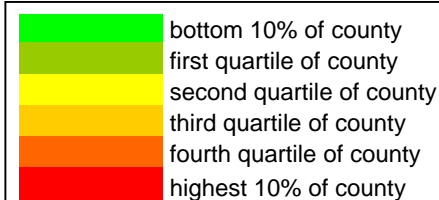


Figure 12 shows the claimant rates for Forest of Dean District wards. The red line represents the average claimant rate across the District of 1.1%. Eight wards lie above the average.

Table 7: Analysis of Claimant Count at Forest of Dean District ward level - October 2015

District	Ward	Rate	Rank*
Forest	Churcham and Huntley	<0.2	1
Forest	Hartpur	0.2	9
Forest	Blaisdon and Longhope	0.4	14
Forest	Christchurch and English Bicknor	0.4	14
Forest	Oxenhall and Newent North East	0.4	14
Forest	Tibberton	0.4	14
Forest	Awre	0.6	41
Forest	Berry Hill	0.6	41
Forest	Newnham and Westbury	0.6	41
Forest	Hewelsfield and Woolaston	0.7	55
Forest	Pillowell	0.7	55
Forest	Redmarley	0.9	81
Forest	Tidenham	0.9	81
Forest	Bromesberrow and Dymock	1.0	95
Forest	Coleford East	1.0	95
Forest	Lydney North	1.0	95
Forest	Newland and St Briavels	1.0	95
Forest	Bream	1.1	104
Forest	Mitcheldean and Drybrook	1.1	104
Forest	Alvington, Aylburton and West Lydney	1.2	110
Forest	Littledean and Ruspidge	1.2	110
Forest	Lydbrook and Ruardean	1.2	110
Forest	Newent Central	1.3	118
Forest	Coleford Central	1.5	124
Forest	Cinderford East	2.0	133
Forest	Lydney East	2.1	134
Forest	Cinderford West	2.4	137



* 1 = "best" and 142 = "worst"

Table 7 shows overall claimant rates for the Forest of Dean District wards and their position relative to all wards in Gloucestershire.

PART 4: LOCAL AUTHORITY DISTRICT AND WARD ANALYSIS

4.4 Gloucester City

Claimant Rate and Claimant Count

Figure 13: Gloucester City claimant rate over the last year

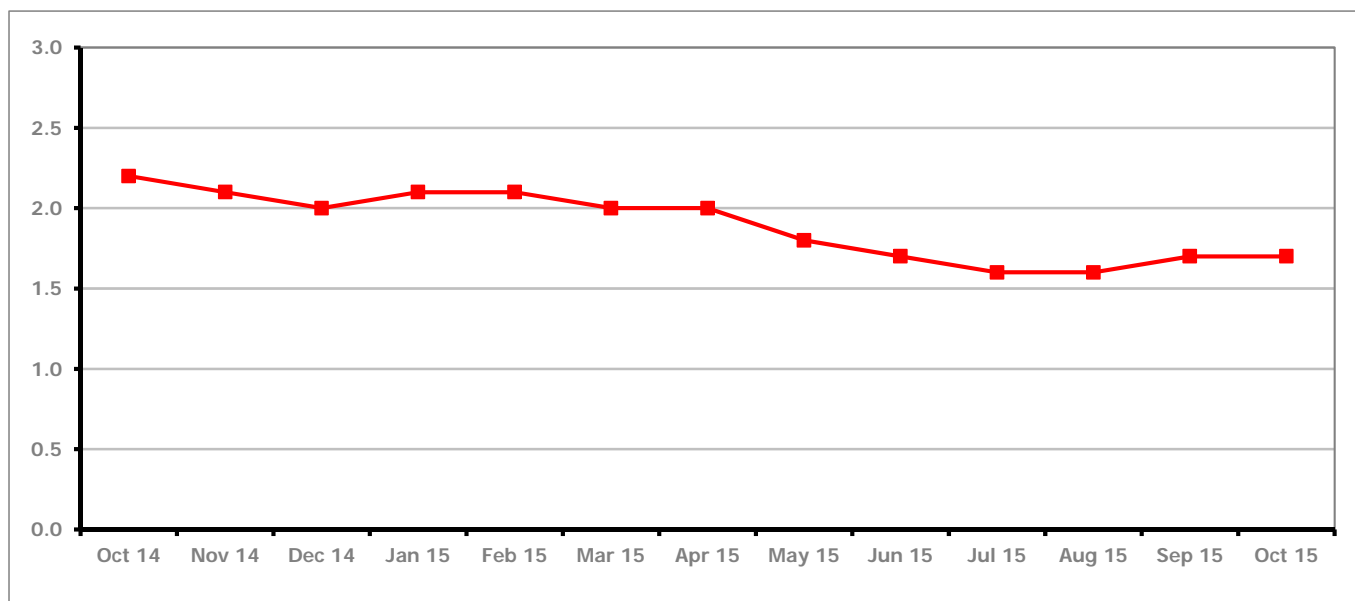


Figure 13 shows the claimant rate for Gloucester City stayed the same as last month at 1.7%.

Figure 14: Gloucester City claimants - Month on Month and Year on Year change

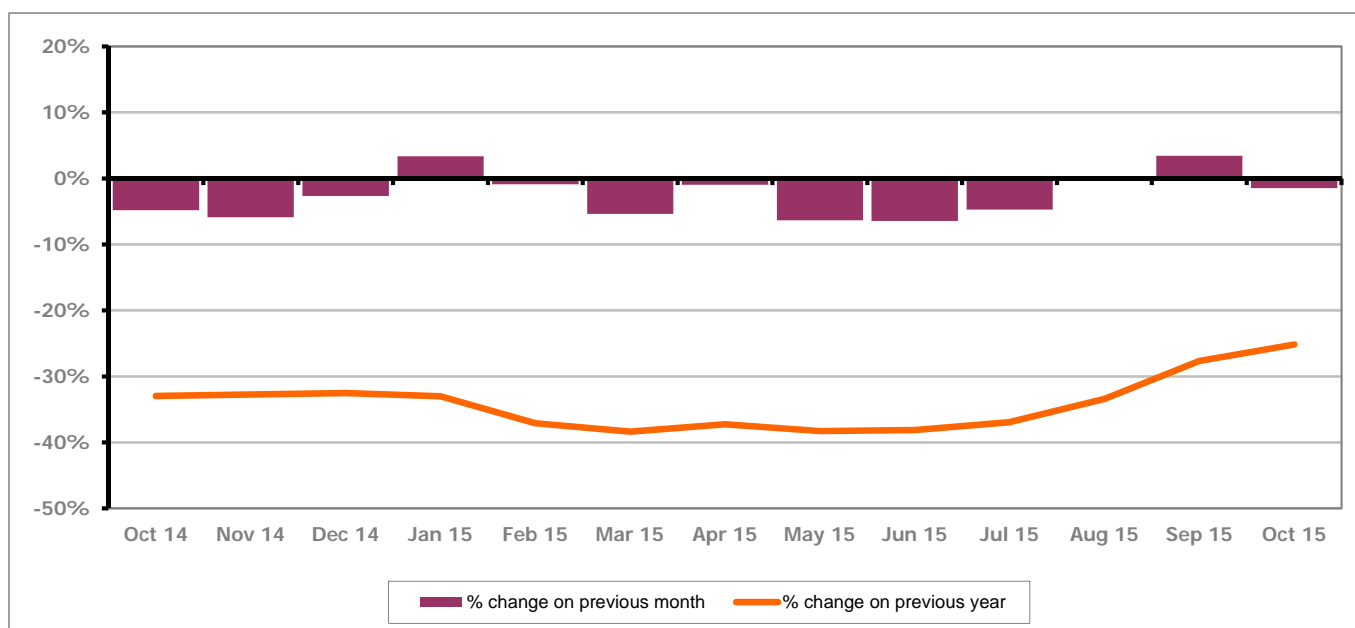


Figure 14 shows the monthly claimant count decreased by 1.5% since September 2015. The change on the previous year has increased between September and October 2015 to -25.1%.

PART 4: LOCAL AUTHORITY DISTRICT AND WARD ANALYSIS

4.4 Gloucester City continued...

Figure 15: Claimant rates across Gloucester City wards - October 2015

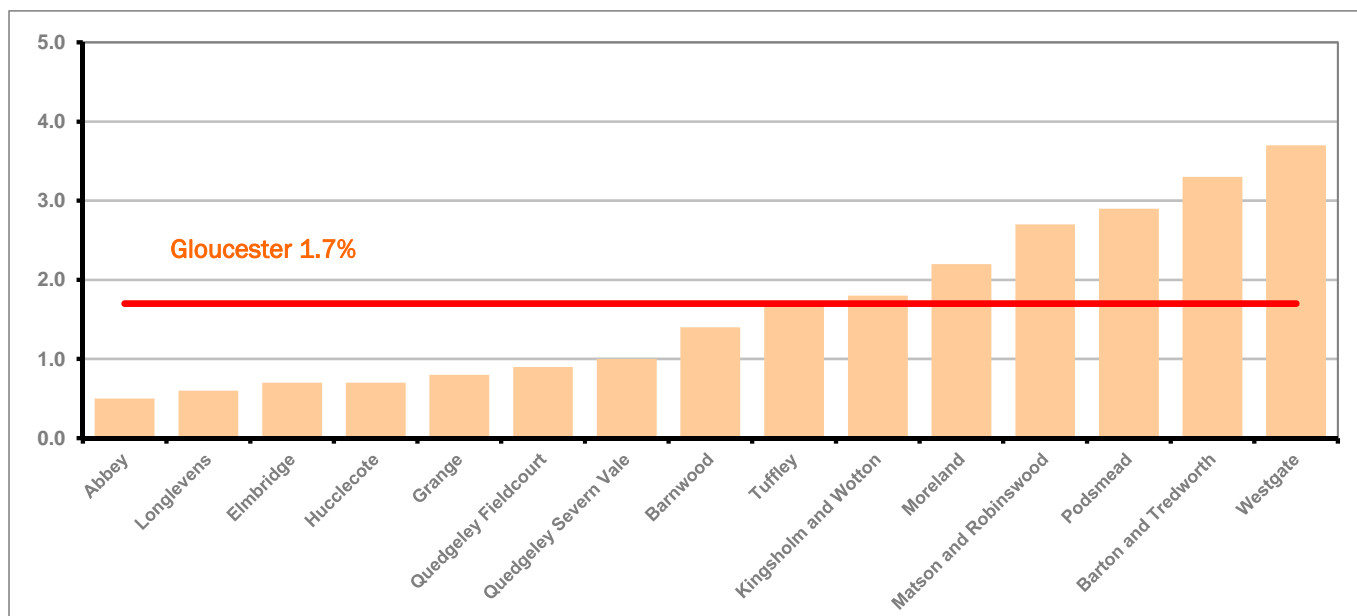
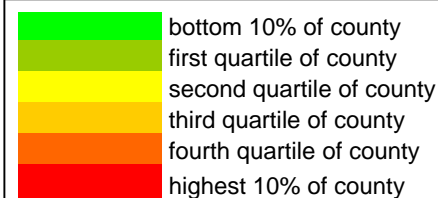


Figure 15 shows the claimant rates for Gloucester City district wards. The red line represents the average claimant rate across the City of 1.7%. Six wards lie above the average.

Table 8: Analysis of Claimant Count at Gloucester City ward level - October 2015

District	Ward	Rate	Rank*
Gloucester	Abbey	0.5	33
Gloucester	Longlevens	0.6	41
Gloucester	Elmbridge	0.7	55
Gloucester	Hucclecote	0.7	55
Gloucester	Grange	0.8	73
Gloucester	Quedgeley Fieldcourt	0.9	81
Gloucester	Quedgeley Severn Vale	1.0	95
Gloucester	Barnwood	1.4	123
Gloucester	Tuffley	1.7	126
Gloucester	Kingsholm and Wotton	1.8	127
Gloucester	Moreland	2.2	136
Gloucester	Matson and Robinswood	2.7	138
Gloucester	Podsmead	2.9	139
Gloucester	Barton and Tredworth	3.3	141
Gloucester	Westgate	3.7	142



* 1 = "best" and 142 = "worst"

Table 8 shows overall claimant rates for Gloucester City wards and their position relative to all wards in Gloucestershire.

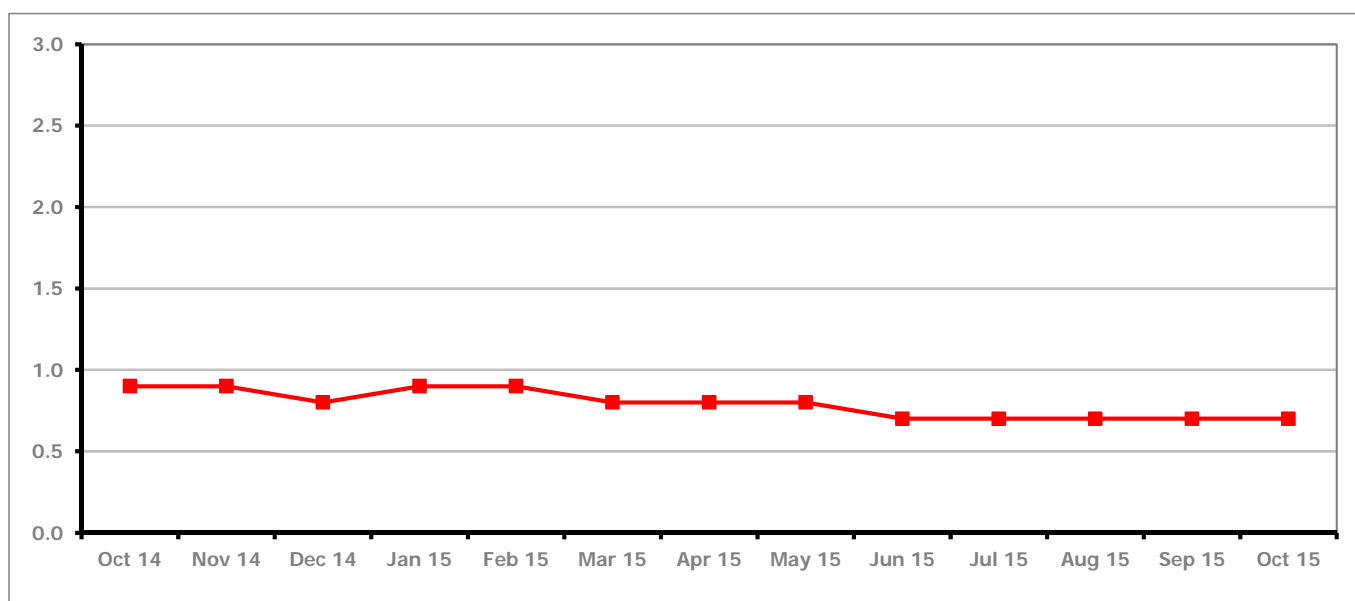
PART 4: LOCAL AUTHORITY DISTRICT AND WARD ANALYSIS**4.5 Stroud District****Claimant Rate and Claimant Count***Figure 16: Stroud District claimant rate over the last year*

Figure 16 shows the claimant rate for Stroud stayed the same as last month at 0.7%.

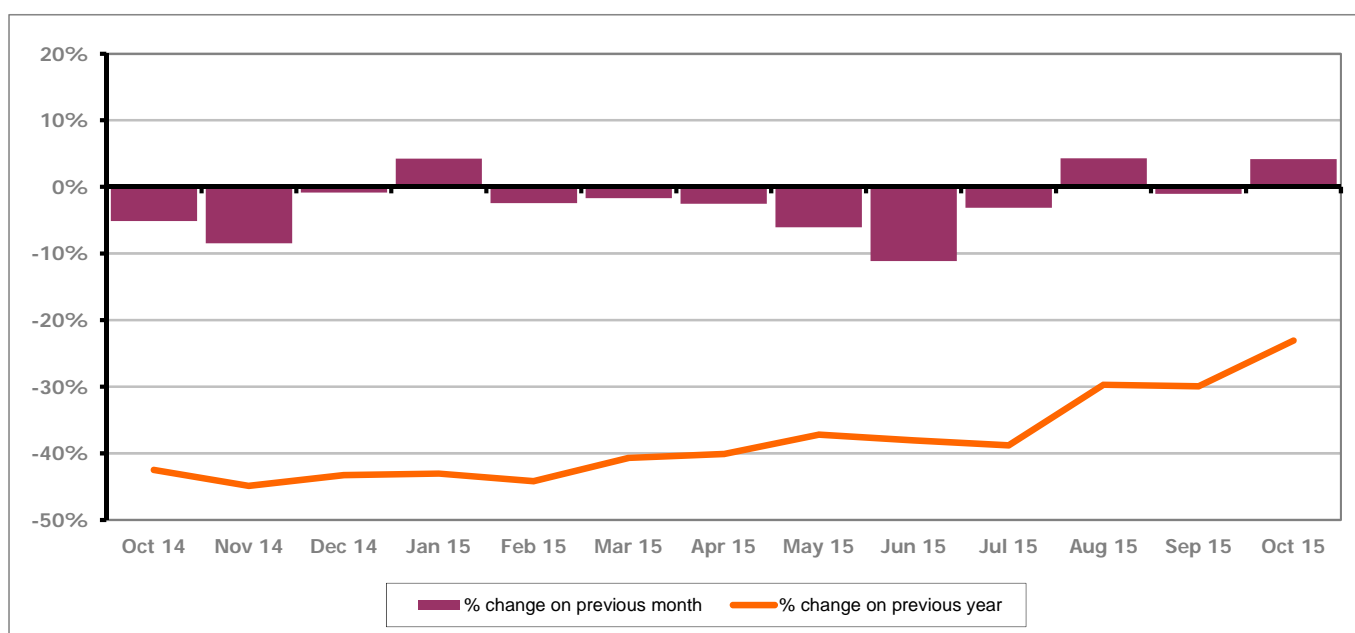
Figure 17: Stroud District claimants - Month on Month and Year on Year change

Figure 17 shows the monthly claimant count increased by 4.2% since September 2015. The change on the previous year has increased between September and October 2015 to -23.1%.

PART 4: LOCAL AUTHORITY AND DISTRICT ANALYSIS

4.5 Stroud District continued...

Figure 18: Claimant rates across Stroud District wards - October 2015

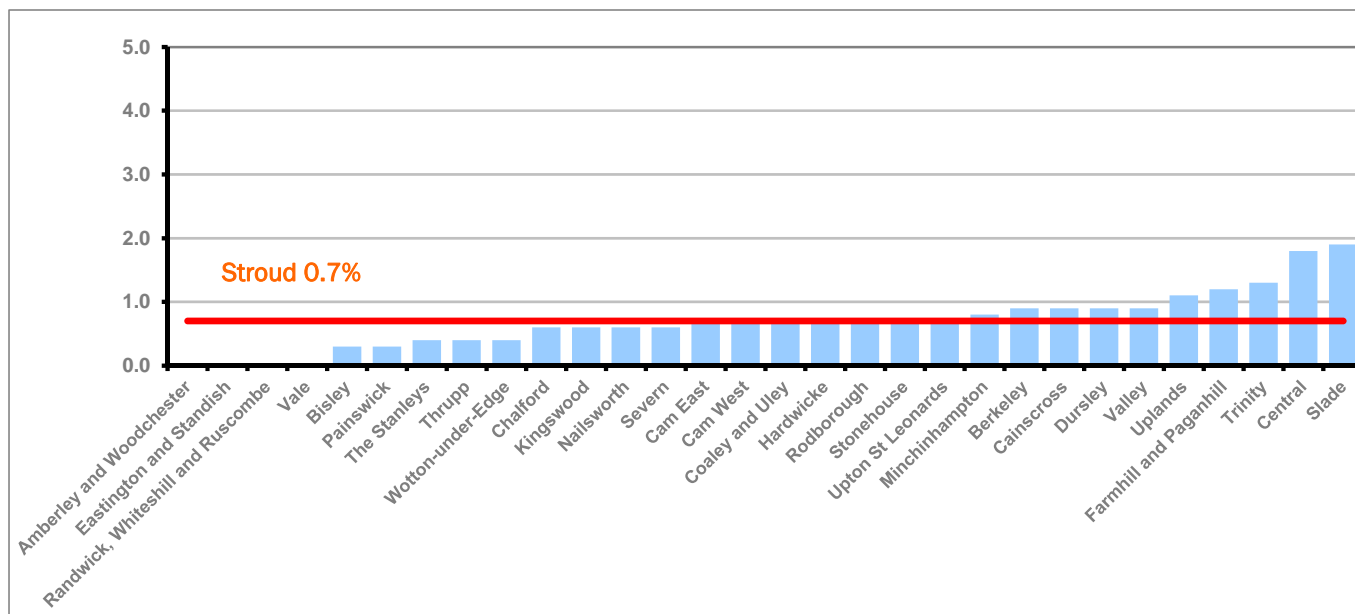
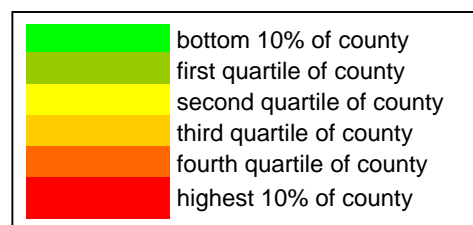


Figure 18 shows the claimant rates in Stroud District wards. The red line represents the average claimant rate across the District of 0.7%. Ten wards are above the average.

Table 9: Analysis of Claimant Count at Stroud District ward level - October 2015

District	Ward	Rate	Rank*
Stroud	Amberley and Woodchester	0.0	1
Stroud	Eastington and Standish	<0.3	1
Stroud	Randwick, Whiteshill and Ruscombe	<0.3	1
Stroud	Vale	<0.3	1
Stroud	Bisley	0.3	10
Stroud	Painswick	0.3	10
Stroud	The Stanleys	0.4	14
Stroud	Thrupp	0.4	14
Stroud	Wotton-under-Edge	0.4	14
Stroud	Chalford	0.6	41
Stroud	Kingswood	0.6	41
Stroud	Nailsworth	0.6	41
Stroud	Severn	0.6	41
Stroud	Cam East	0.7	55
Stroud	Cam West	0.7	55
Stroud	Coaley and Uley	0.7	55
Stroud	Hardwicke	0.7	55
Stroud	Rodborough	0.7	55
Stroud	Stonehouse	0.7	55
Stroud	Upton St Leonards	0.7	55
Stroud	Minchinhampton	0.8	73
Stroud	Berkeley	0.9	81
Stroud	Cainscross	0.9	81
Stroud	Dursley	0.9	81
Stroud	Valley	0.9	81
Stroud	Uplands	1.1	104
Stroud	Farmhill and Paganhill	1.2	110
Stroud	Trinity	1.3	118
Stroud	Central	1.8	127
Stroud	Slade	1.9	131



* 1 = "best" and 142 = "worst"

Table 9 shows overall claimant rates for Stroud District wards and their position relative to all wards in Gloucestershire.

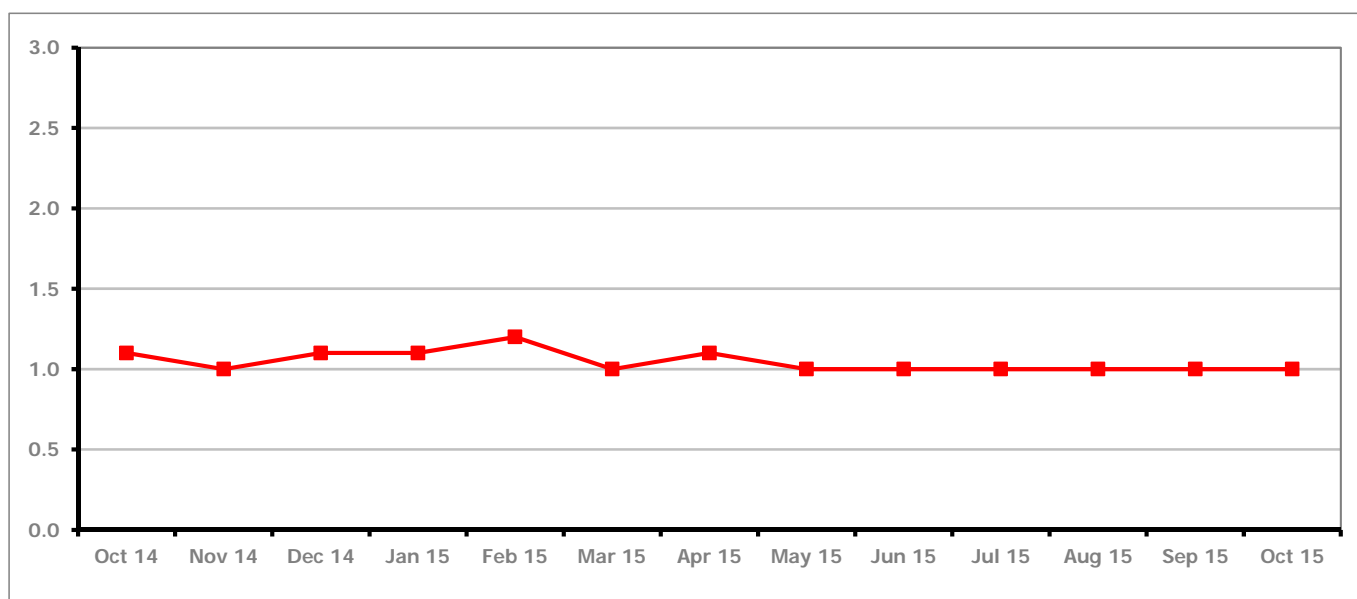
PART 4: LOCAL AUTHORITY DISTRICT AND WARD ANALYSIS**4.6 Tewkesbury District****Claimant Rate and Claimant Count***Figure 19: Tewkesbury District claimant rate over the last year*

Figure 19 shows the claimant rate for Tewkesbury District remained the same as last month at 1.0%

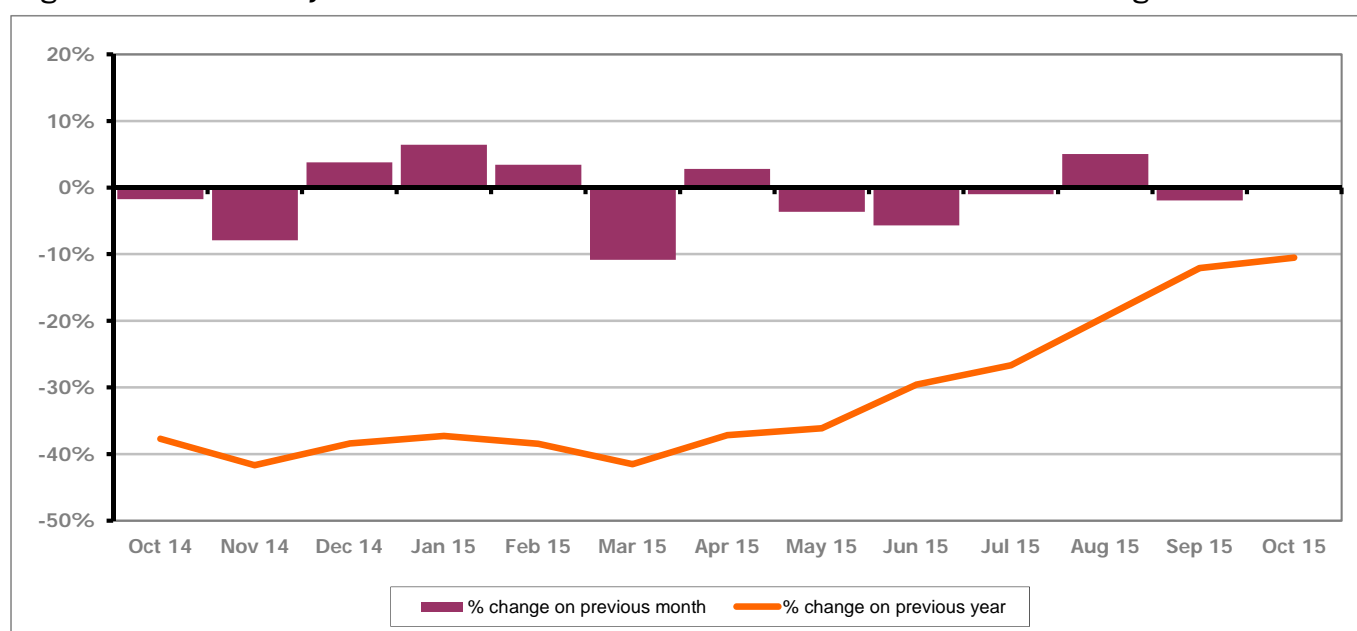
Figure 20: Tewkesbury District claimants - Month on Month and Year on Year change

Figure 20 shows that the monthly claimant count showed no change from last month. The change on the previous year increased between September and October 2015 to -10.5%.

PART 4: LOCAL AUTHORITY AND DISTRICT ANALYSIS

4.6 Tewkesbury District continued...

Figure 21: Claimant rates across Tewkesbury District wards - October 2015

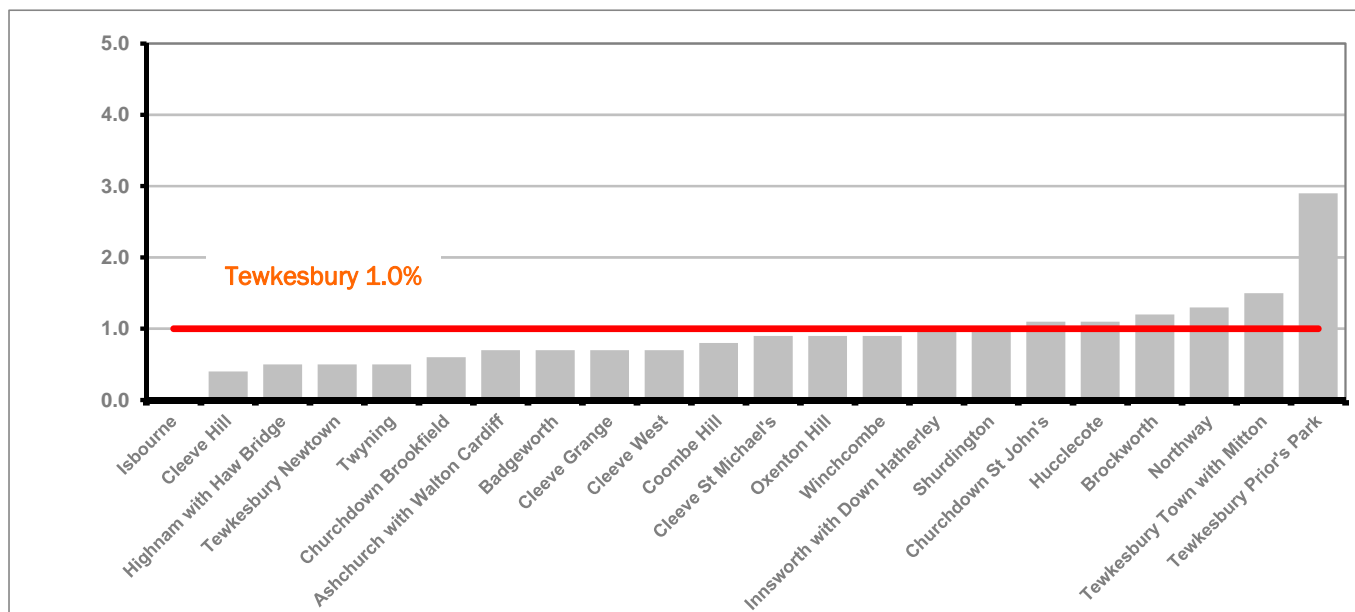
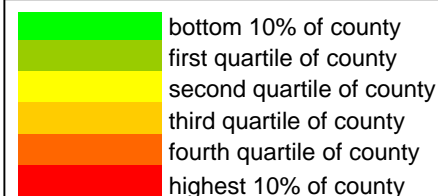


Figure 21 shows the claimant rates in Tewkesbury District wards. The red line represents the average claimant rate across the District of 1.0% and six wards are above the average.

Table 10: Analysis of Claimant Count at Tewkesbury District level - October 2015

District	Ward	Rate	Rank*
Tewkesbury	Isbourne	<0.4	1
Tewkesbury	Cleeve Hill	0.4	14
Tewkesbury	Highnam with Haw Bridge	0.5	33
Tewkesbury	Tewkesbury Newtown	0.5	33
Tewkesbury	Twynning	0.5	33
Tewkesbury	Churchdown Brookfield	0.6	41
Tewkesbury	Ashchurch with Walton Cardiff	0.7	55
Tewkesbury	Badgeworth	0.7	55
Tewkesbury	Cleeve Grange	0.7	55
Tewkesbury	Cleeve West	0.7	55
Tewkesbury	Coombe Hill	0.8	73
Tewkesbury	Cleeve St Michael's	0.9	81
Tewkesbury	Oxenton Hill	0.9	81
Tewkesbury	Winchcombe	0.9	81
Tewkesbury	Innsworth with Down Hatherley	1.0	95
Tewkesbury	Shurdington	1.0	95
Tewkesbury	Churchdown St John's	1.1	104
Tewkesbury	Hucclecote	1.1	104
Tewkesbury	Brockworth	1.2	110
Tewkesbury	Northway	1.3	118
Tewkesbury	Tewkesbury Town with Mitton	1.5	124
Tewkesbury	Tewkesbury Prior's Park	2.9	139

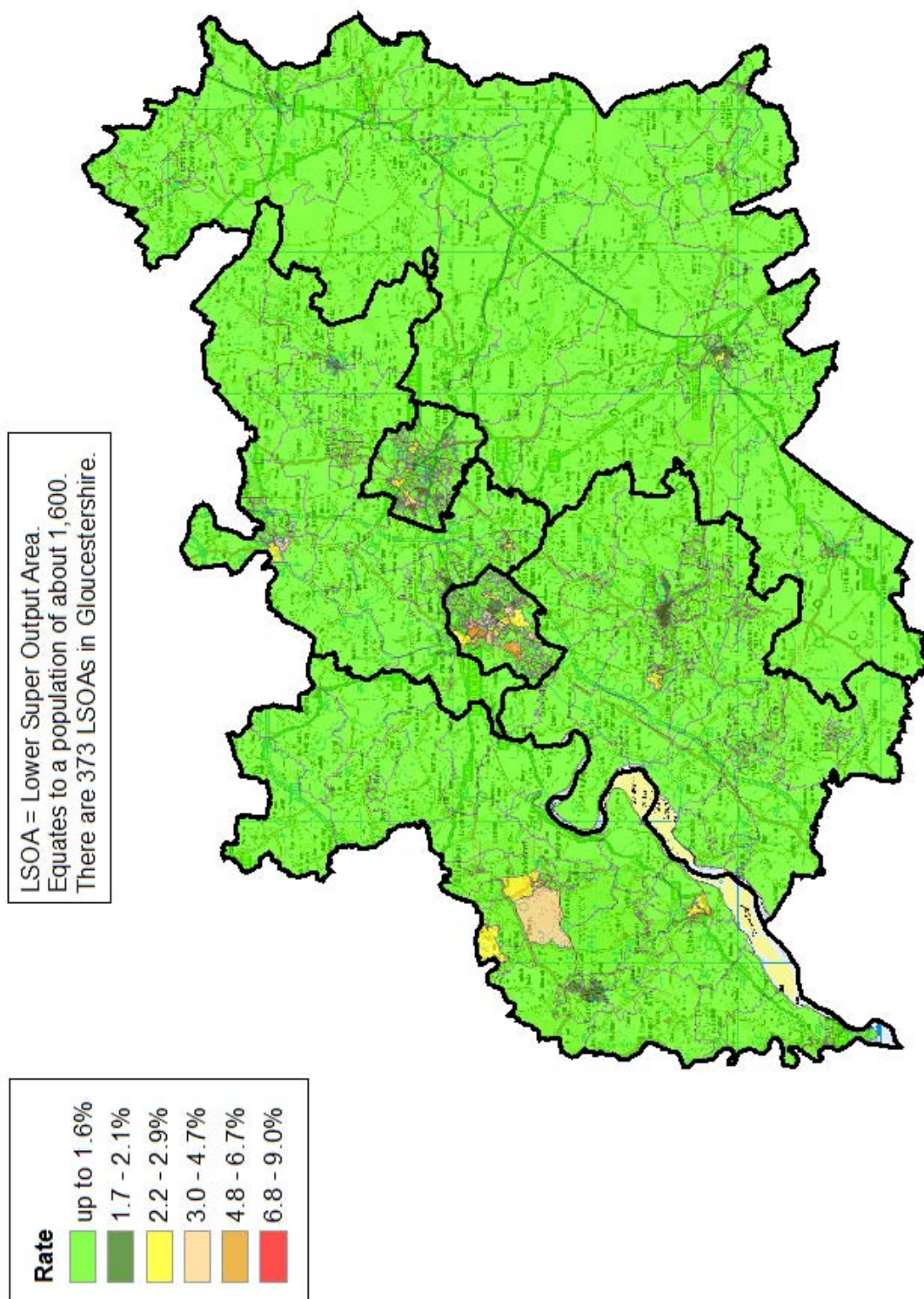


* 1 = "best" and 142 = "worst"

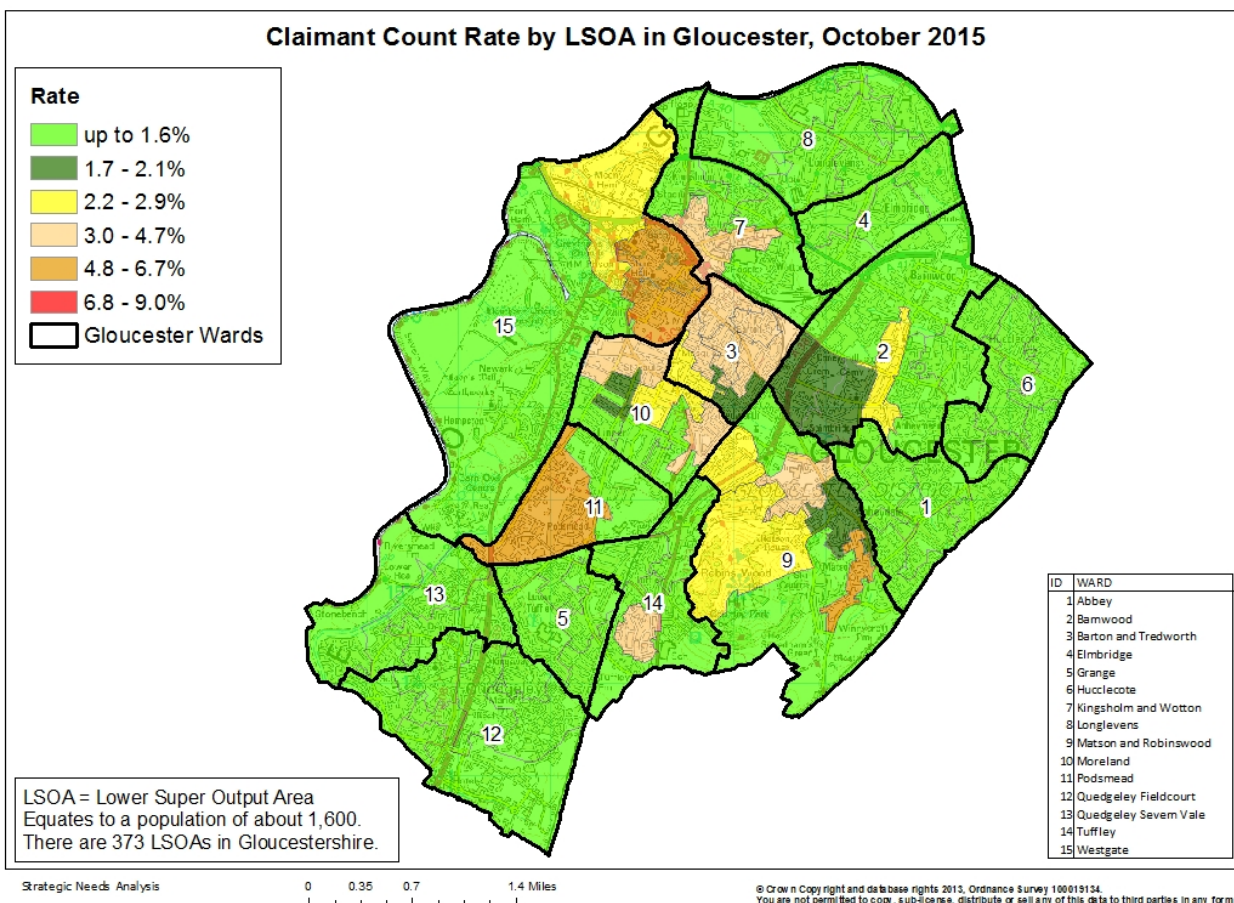
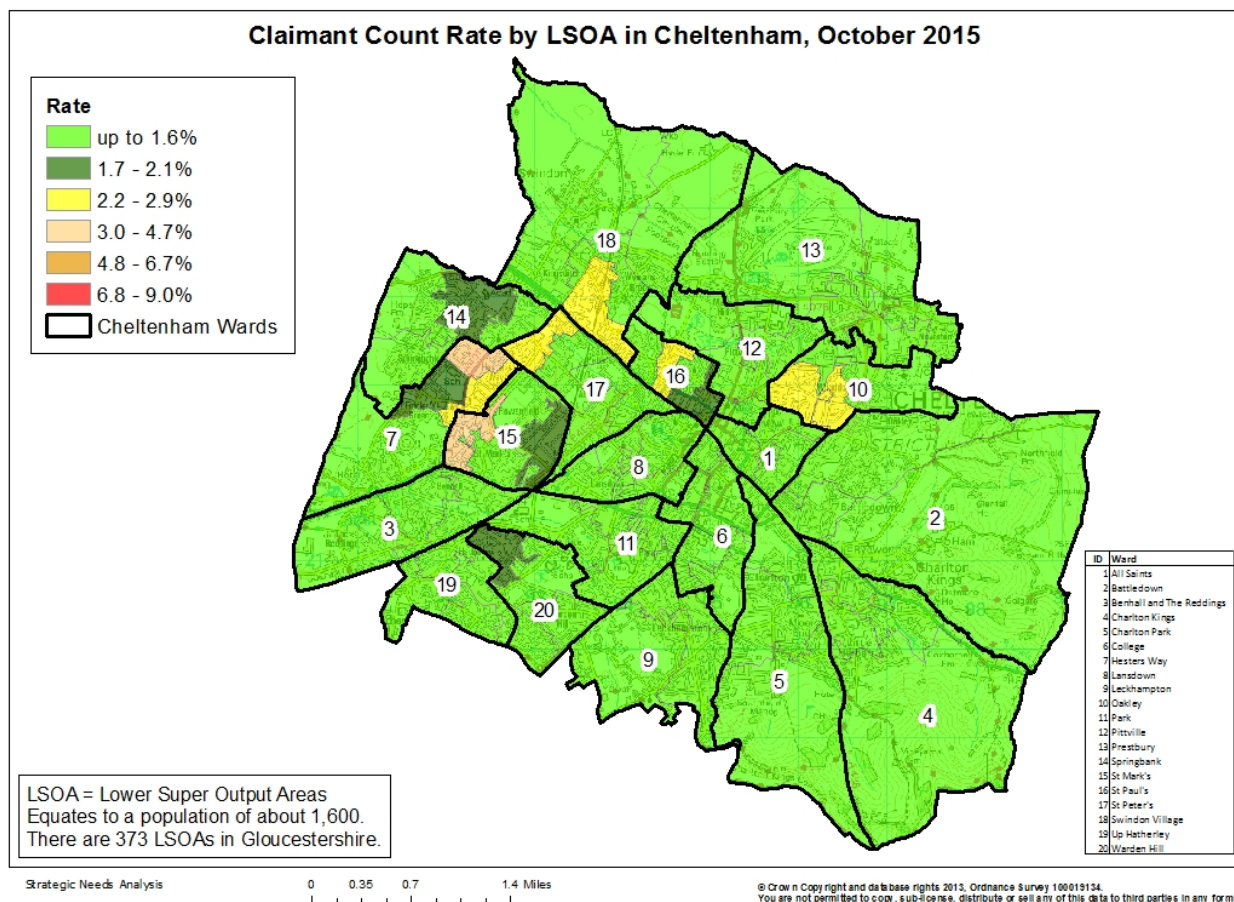
Table 10 shows overall claimant rates for Tewkesbury District wards and their position relative to all wards in Gloucestershire.

PART 5: MAP SHOWING DISTRIBUTION OF CLAIMANT RATE ACROSS GLOUCESTERSHIRE

Claimant Count Rate by LSOA in Gloucestershire, October 2015



PART 5: MAP SHOWING DISTRIBUTION OF CLAIMANT RATE ACROSS GLOUCESTERSHIRE



PART 6: YOUTH UNEMPLOYMENT(18-24 year olds)

Youth Claimant Rate and Claimant Count

Figure 22: Claimant Count for Gloucestershire over the past year

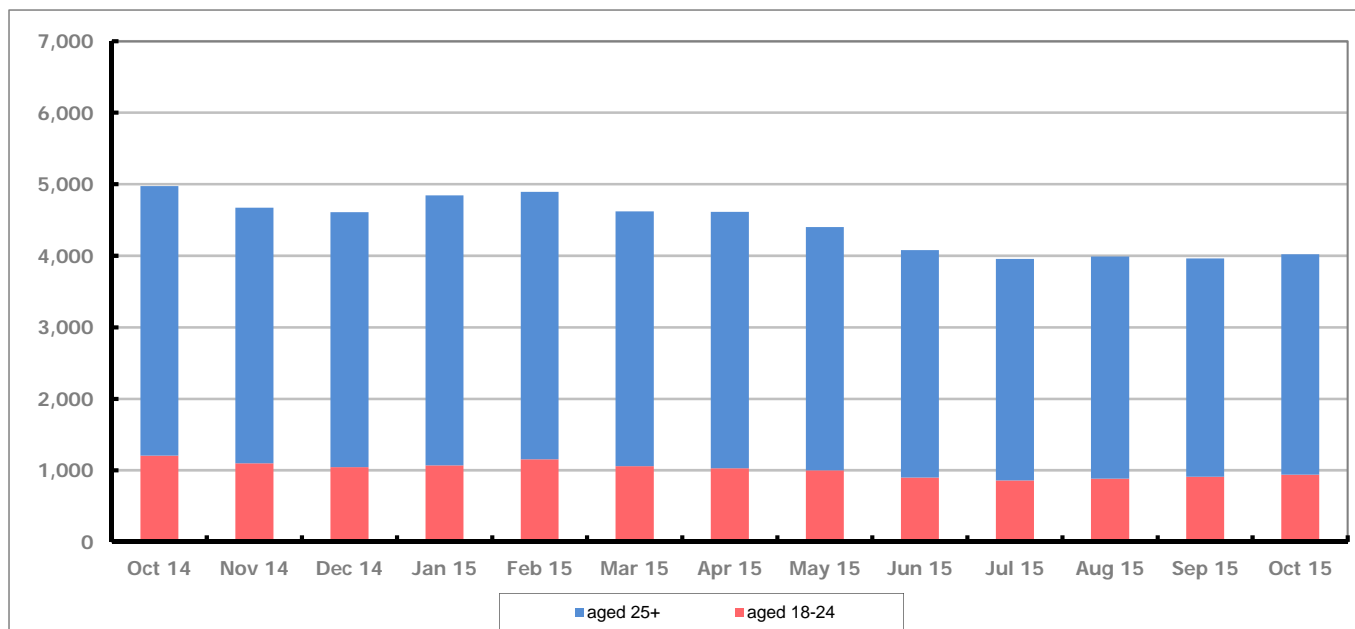


Figure 23 shows that in October 2015, 940 people aged 18-24 were claiming Job Seekers Allowance and Universal Credit who were not in work in Gloucestershire, this represents 23.3% of total working age claimants.

Figure 23: Youth Claimant Rate for Gloucestershire, the South West and UK over the past year

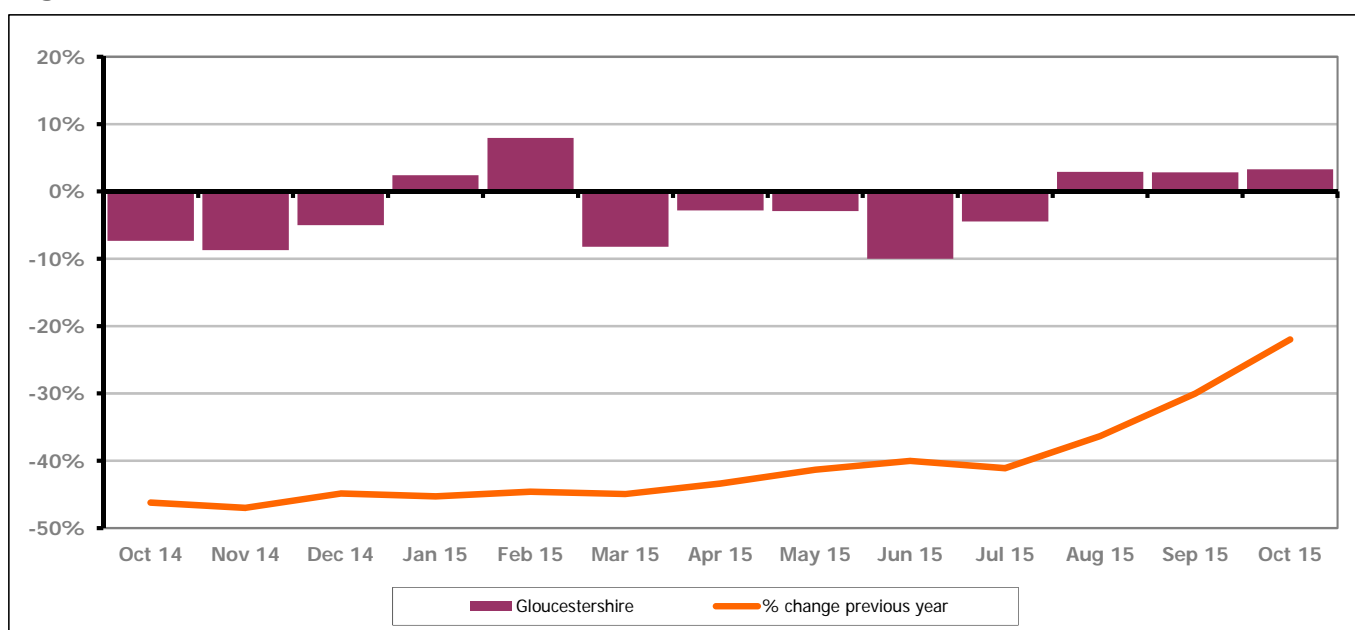


Figure 24 shows the number of young claimants increased in October 2015 by 3.3% this represented 30 people. Over the last year the number of young claimants fell by 22.0% or 265 people.

PART 7: YOUNG PEOPLE NOT IN EDUCATION, EMPLOYMENT OR TRAINING (NEET) IN GLOUCESTERSHIRE

Data provided by Gloucestershire Youth Support Team on the situation of young people (16-18) in Gloucestershire who are not in education, employment or formal training.

Gloucestershire Youth Support Team is required to report performance with the 16-18 age range against nationally defined criteria for counting the NEET group. The NEET group includes young people actively seeking education, employment or training as well as those young people who are either not yet ready or who are unable to access these opportunities because of their personal circumstances. The figures quoted below include young people in both of these categories.

Summary

At the end of October 2015 there were 539 young people aged 16-18 not in education, employment or training in Gloucestershire and this figure translates into an adjusted (*) 16-18 NEET population of 3.53%. The total number of NEET young people increased by 84 in October 2015 compared to September 2015. Five districts saw an increase in their figures, one district had a decrease.

Total NEET Group by District Area

October 2015 NEET data

	Cheltenham	Cotswold	Forest	Gloucester	Stroud	Tewkesbury	Total
Total NEET	94	51	66	174	72	82	539
Cohort	2707	2307	2229	5106	3133	1886	17368
% NEET	3.47	2.21	2.96	3.41	2.30	4.35	3.53

If you would like to receive any further information on Gloucestershire's NEET strategy then please contact Ruth.Critchlow@Prospects.co.uk or telephone 01452 426900.

(*) Adjustment includes a proportion of young people aged 16-18 whose outcomes are not-known to Gloucestershire Youth Support Team.