

2021 Census

Detailed Results - Gloucestershire

Data and Analysis Team – Gloucestershire County Council

Living our values every day



Accountable



Integrity



Empower



Respect





Excellence



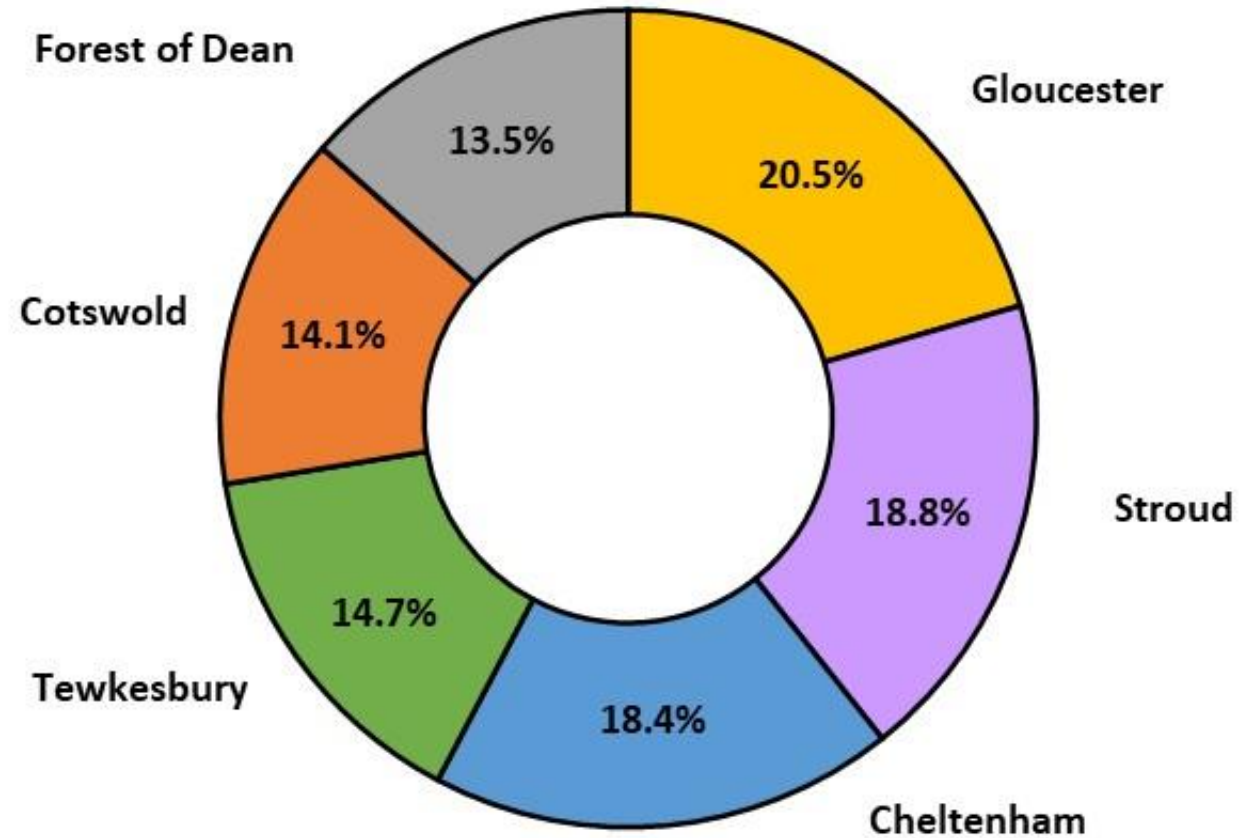
Total population - 2021

 **645,076**
people

 **48.9%** male

 **51.1%** female

Population Distribution of Gloucestershire, 2021



Population change

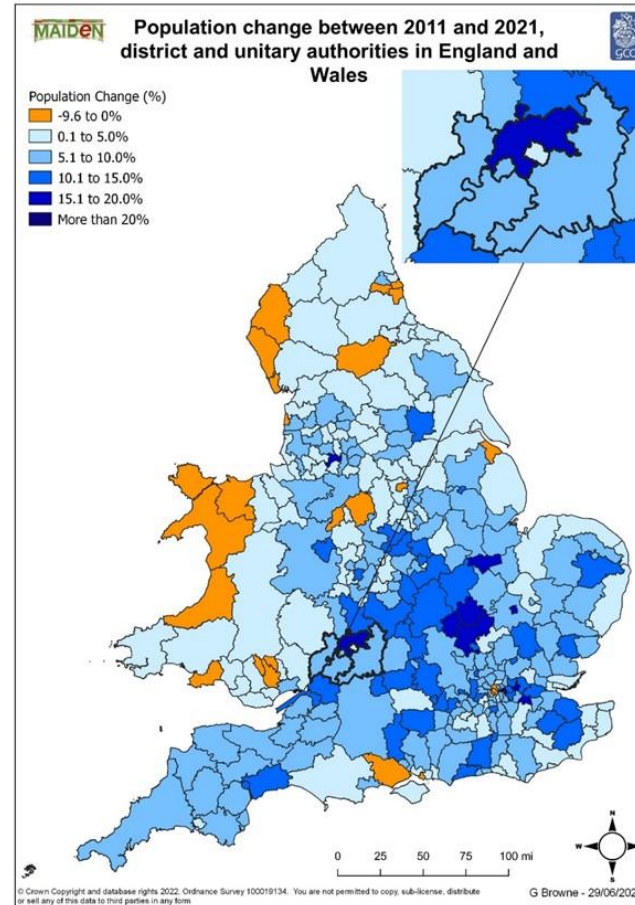
8.1% increase



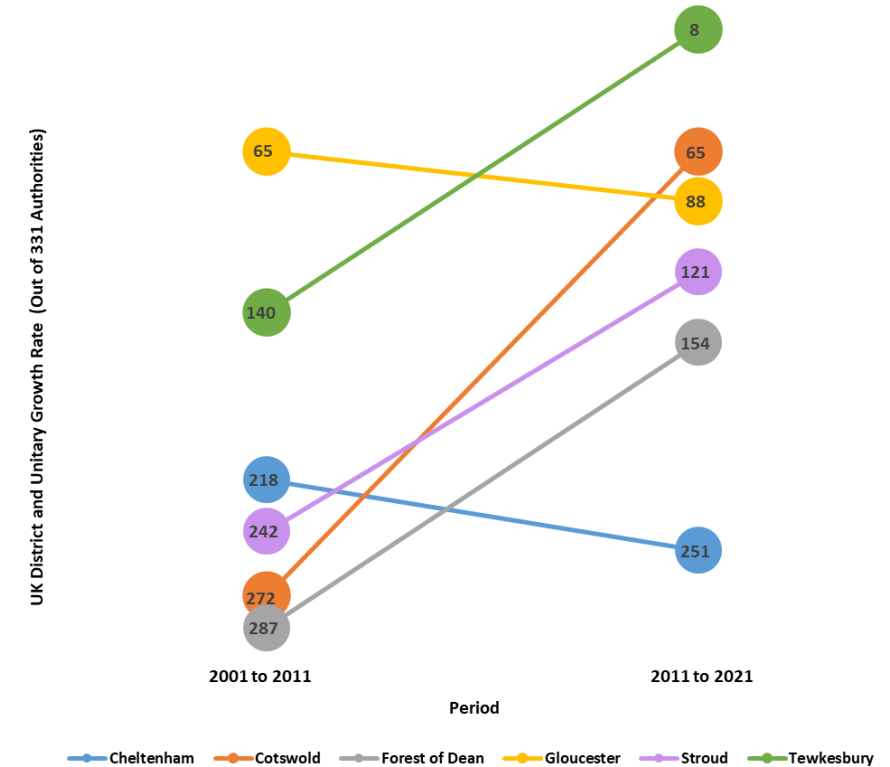
50th highest population growth nationally
(out of 174 upper tier authorities)

Tewkesbury 8th highest population growth nationally
(out of 331 districts)

Cheltenham 251st highest population growth nationally
(out of 331 districts)



Rank for Population Growth Out of the 331 District and Unitary Authorities in England and Wales, 2001 to 2011 and 2011 to 2021



Population change

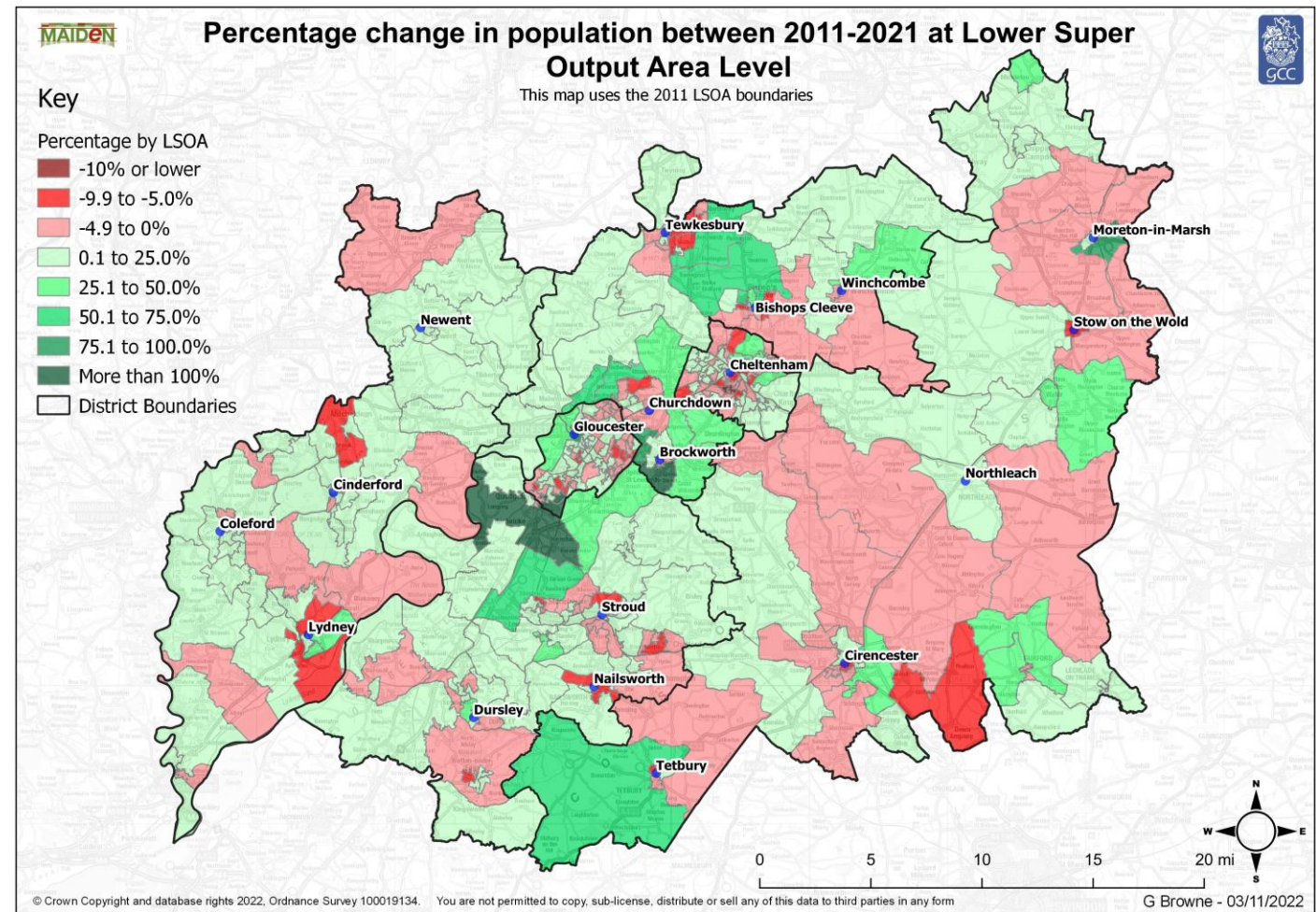
Around **40%** of LSOAs saw declining populations



4 LSOAs (1%) saw growth of 100%+



The greatest growth was around the edge of **Gloucester**



Living our values every day



Accountable



Integrity



Empower



Respect



Excellence



Who lives in Gloucestershire?

Living our values every day



Accountable



Integrity



Empower



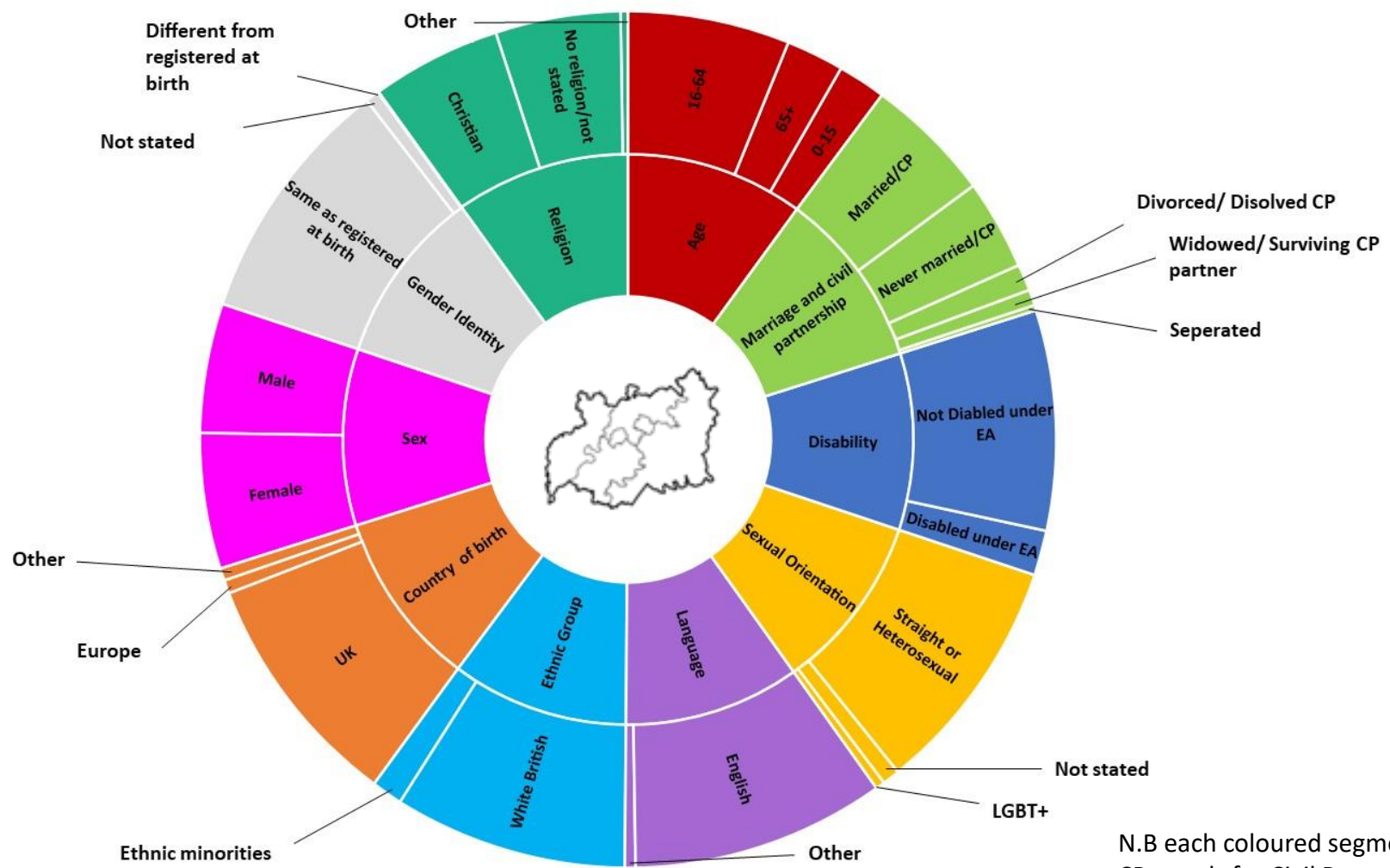
Respect



Excellence



Gloucestershire as 100 people



N.B each coloured segment represents 100 people
CP stands for Civil Partnership

Broad age groups



122nd highest % of
0-15 year olds
(out of 174 upper tier authorities)

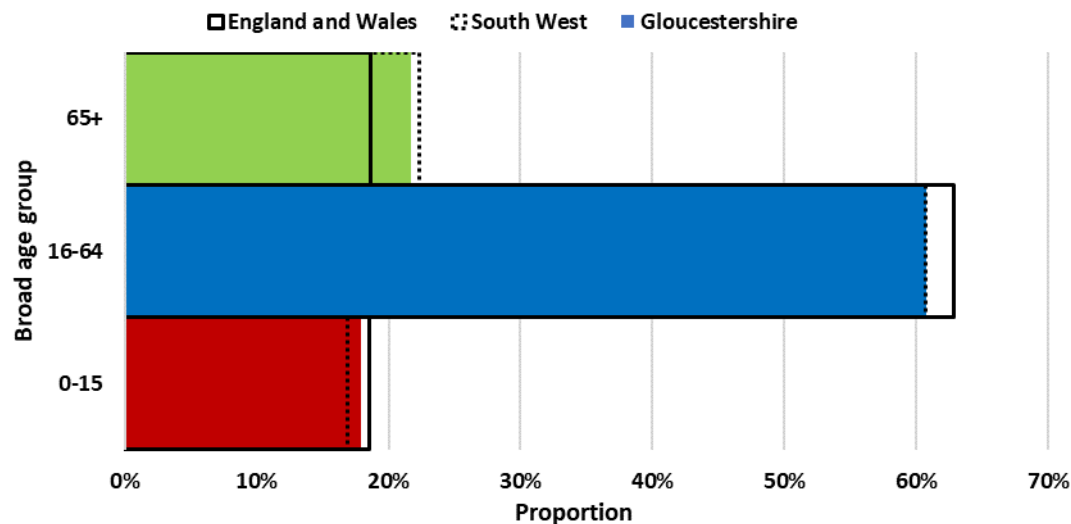


129th highest % of
16-64 year olds
(out of 174 upper tier authorities)

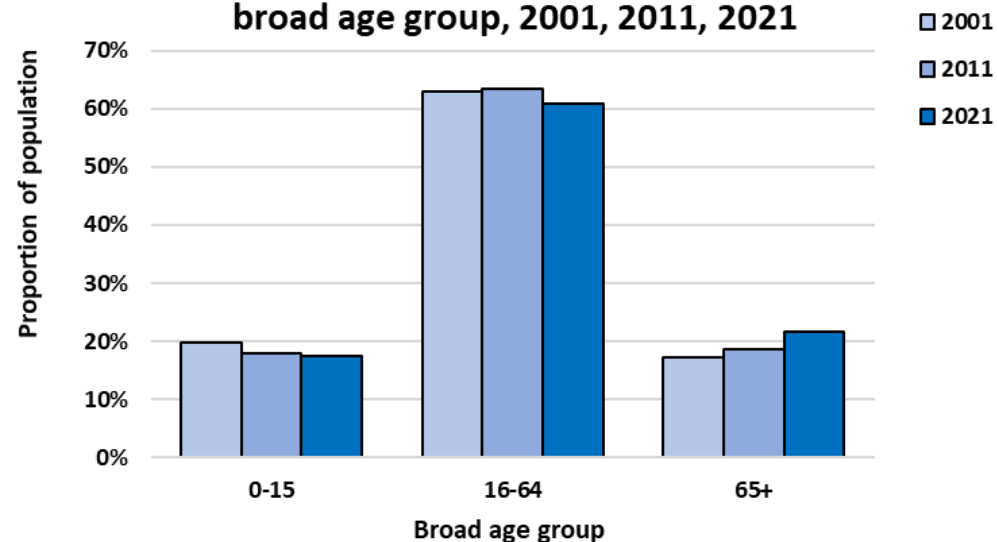


41st highest % of
65+ year olds
(out of 174 upper tier authorities)

Proportion of population by broad age group Gloucestershire, South West and England and Wales, 2021



Proportion of Gloucestershire's population by broad age group, 2001, 2011, 2021

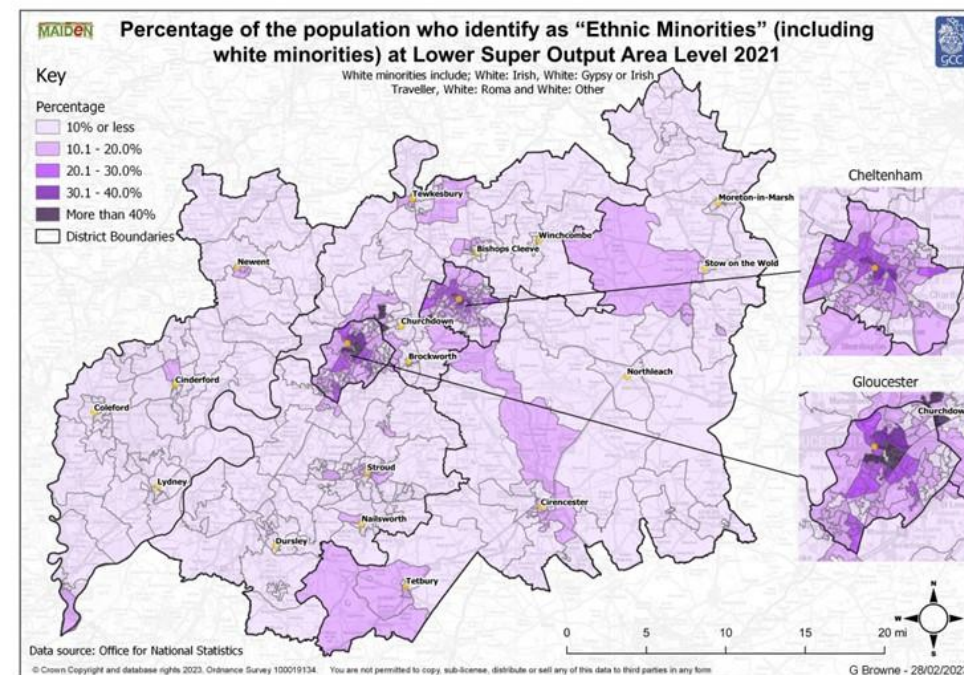
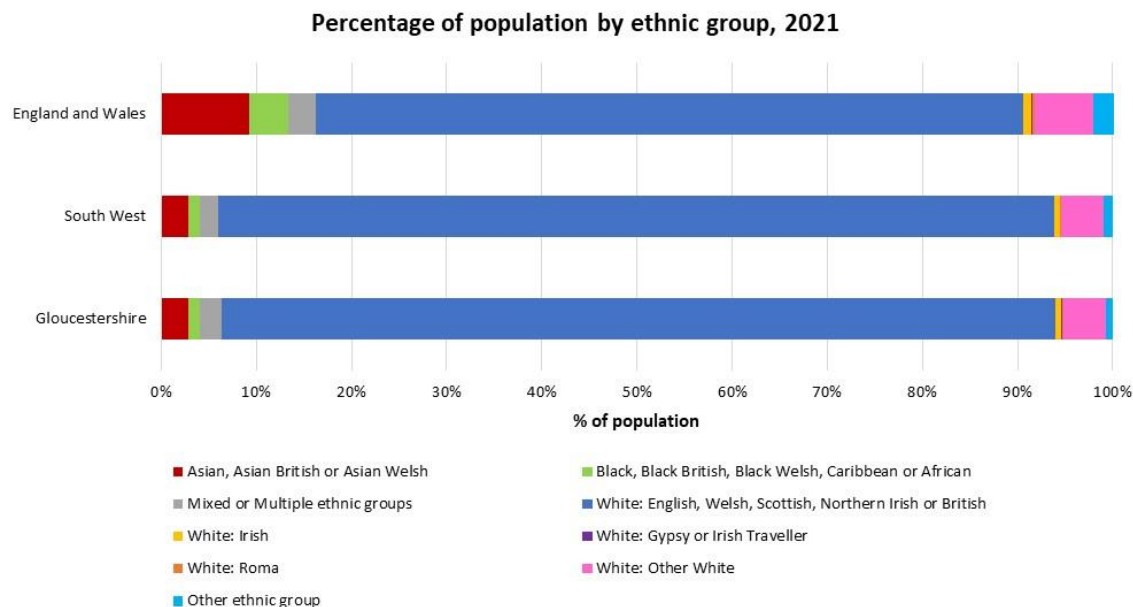


Ethnic groups

12.3% of the population
identify as “ethnic minorities”
(includes all groups except white: British)

White: Other White
largest ethnic minority group

4.0 pp increase in proportion
of people from ethnic minority
backgrounds 2011-21



Country of birth

1 in 10 people not born in the UK

Poland is the country where the highest number of non-UK people were born

40% increase in the non-UK born population between 2011-21

United Kingdom Europe (Non-UK)

Proportion of 2021 Population:



2011: 550,876

2021: 580,562



22,301

32,548

Africa



6,728

9,032

Middle East and Asia



10,273

14,723

The Americas and the Caribbean



4,964

5,801

Antarctica and Oceania, and Other



N/A

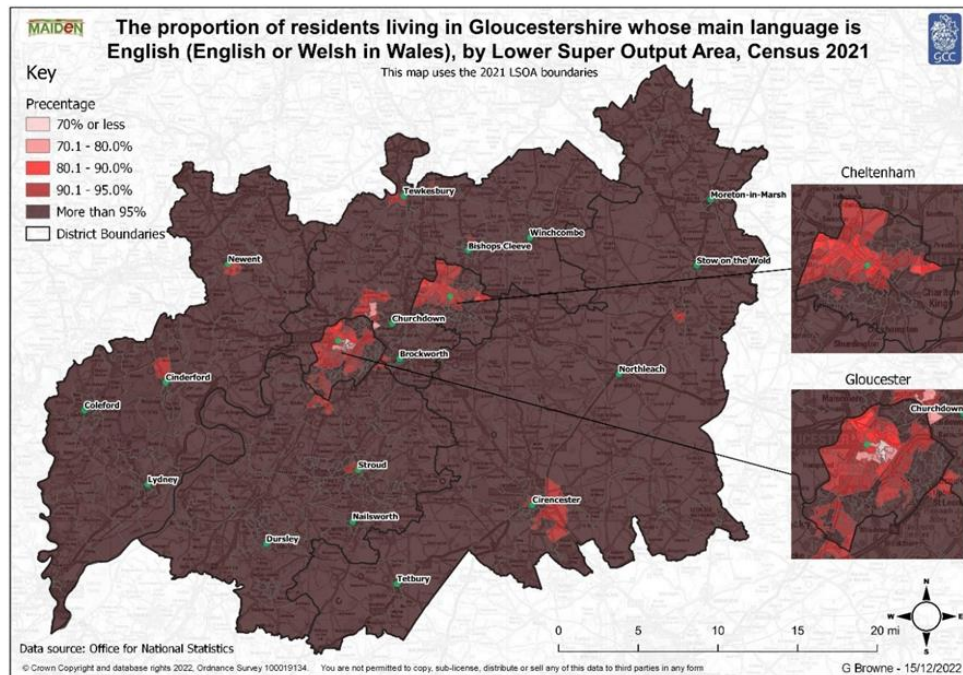
2,198

Language

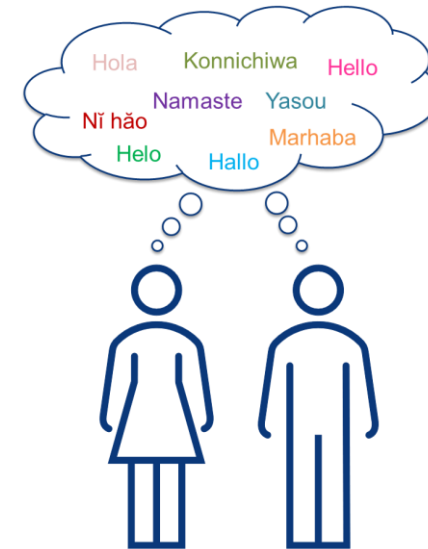
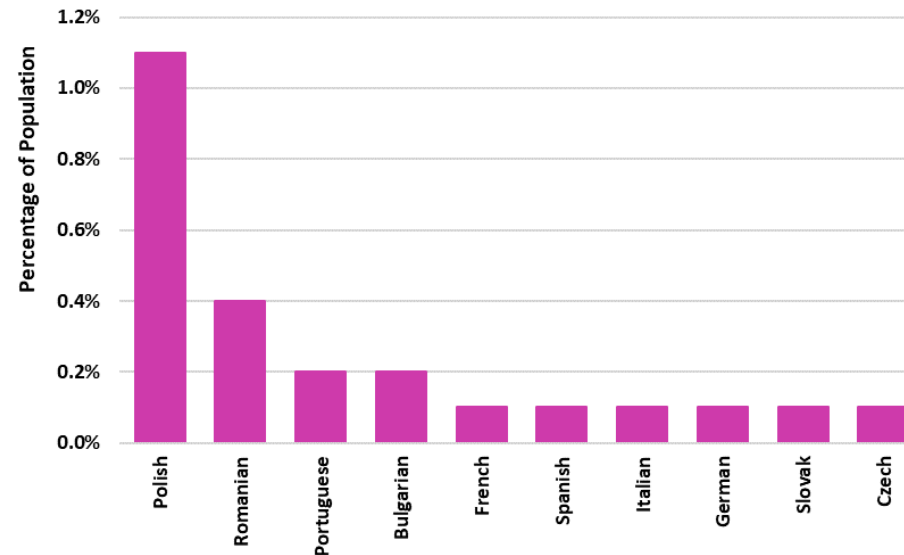
95.7% of population chose English as main language

1 pp increase in the proportion who do not speak English as main language

0.7% cannot speak English well or at all



Top 10 languages that are not English (English or Welsh in Wales), 2021- Gloucestershire



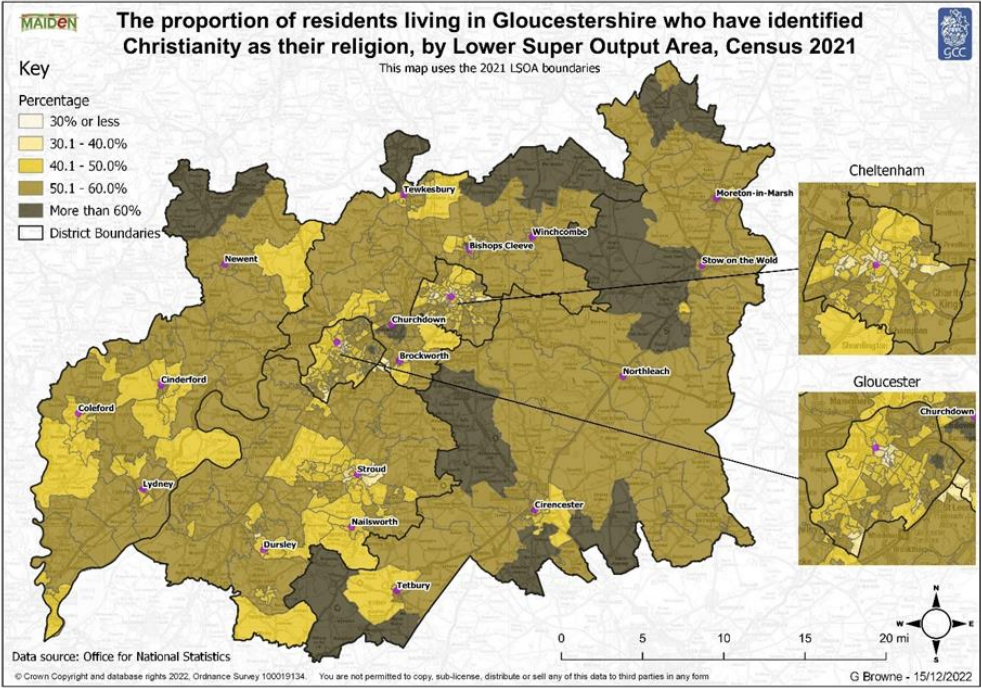
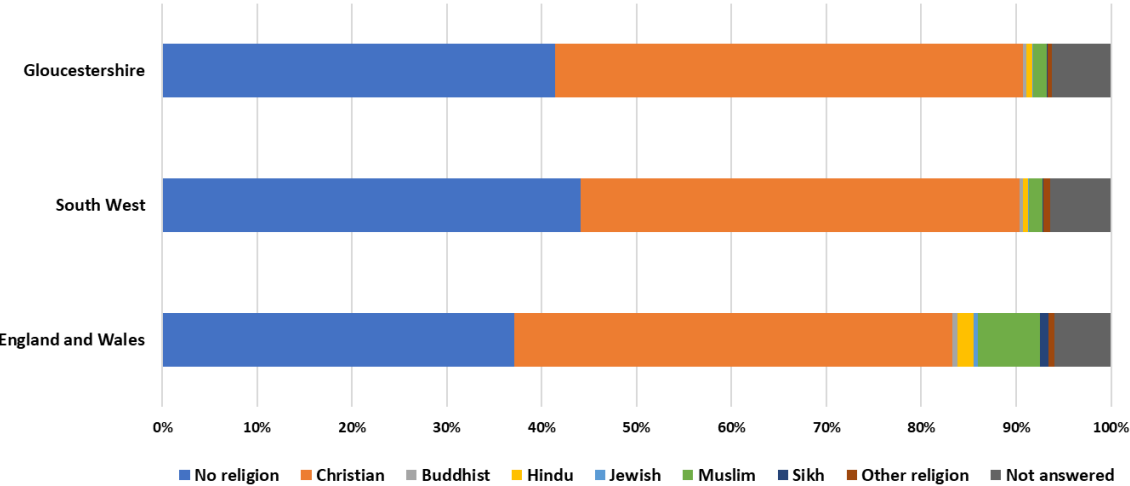
Religion

52.3% of Gloucestershire's population have a religion

16.2% decrease in number of Christians

67.4% increase in people with no religion

Proportion of Gloucestershire's population by religion



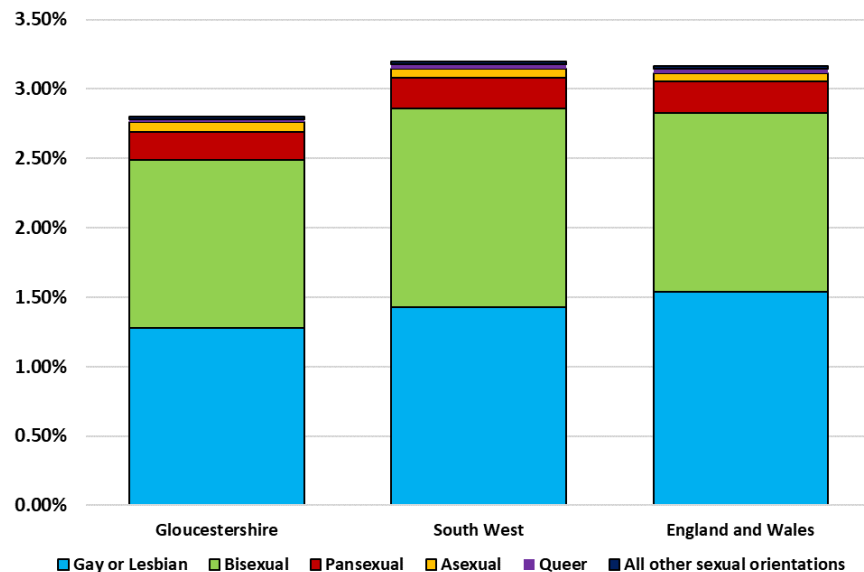
Sexual orientation and gender identity

2.8% of the population gave a sexual orientation other than straight or heterosexual

0.4% of the population do not have the same gender identity as at birth

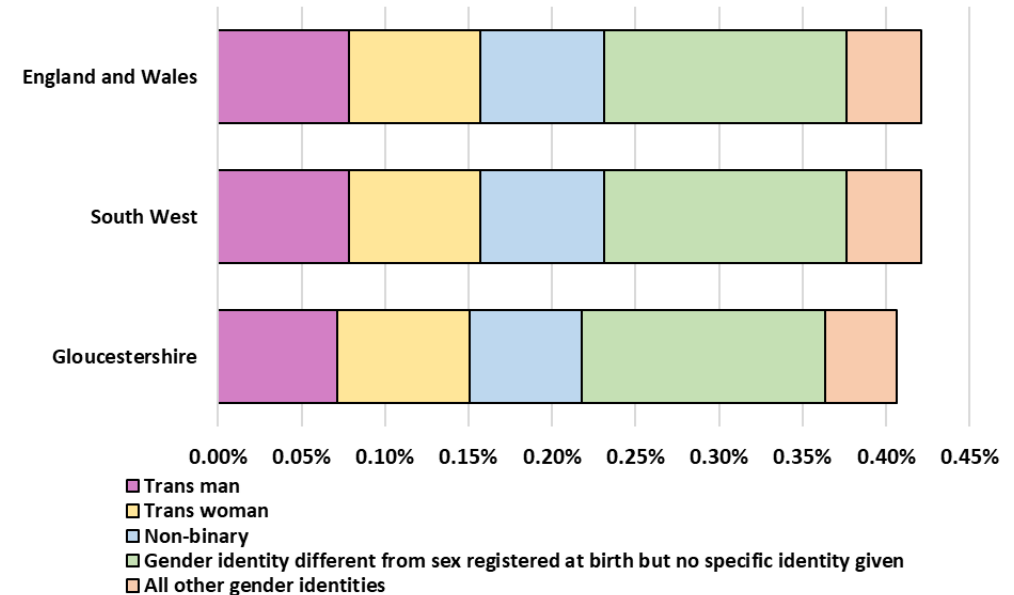
Around **1 in 20** people chose not to answer the sexual orientation and gender identity questions

Proportion of the population in each sexual orientation category* in Gloucestershire, the South West and England and Wales



*Excluding straight or heterosexual (90.4% of Gloucestershire's population) and the not answered category

Proportion of the population in each gender identity category* in England and Wales



*Excluding Gender identity the same as sex registered at birth (94.4% of Gloucestershire's population) and the not answered category

Marriage and civil partnership



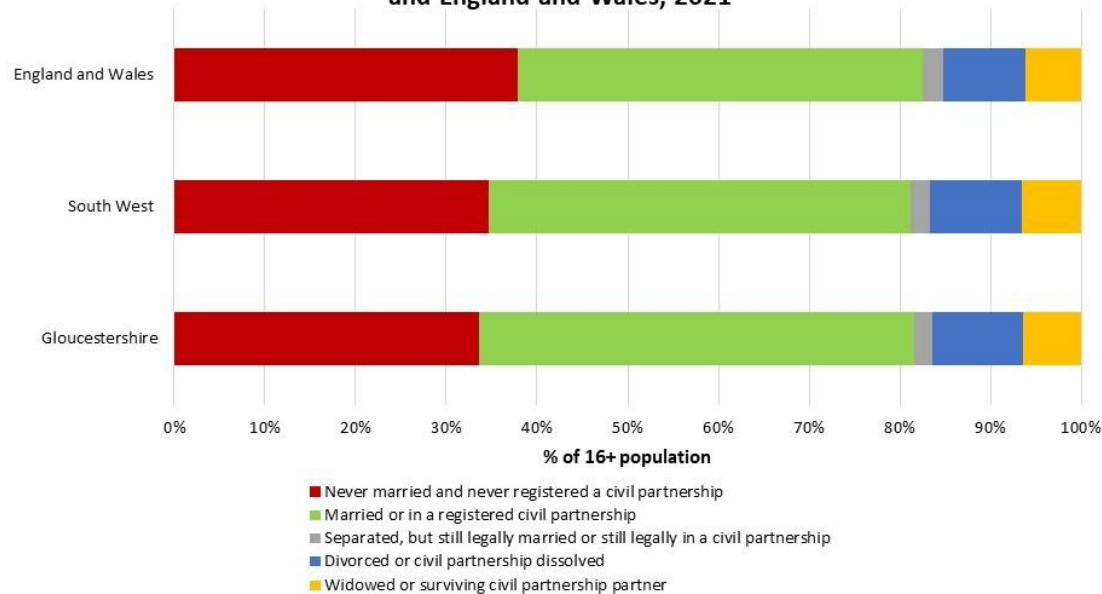
48.0%
were married or
in a civil partnership

11.9%
were separated or divorced

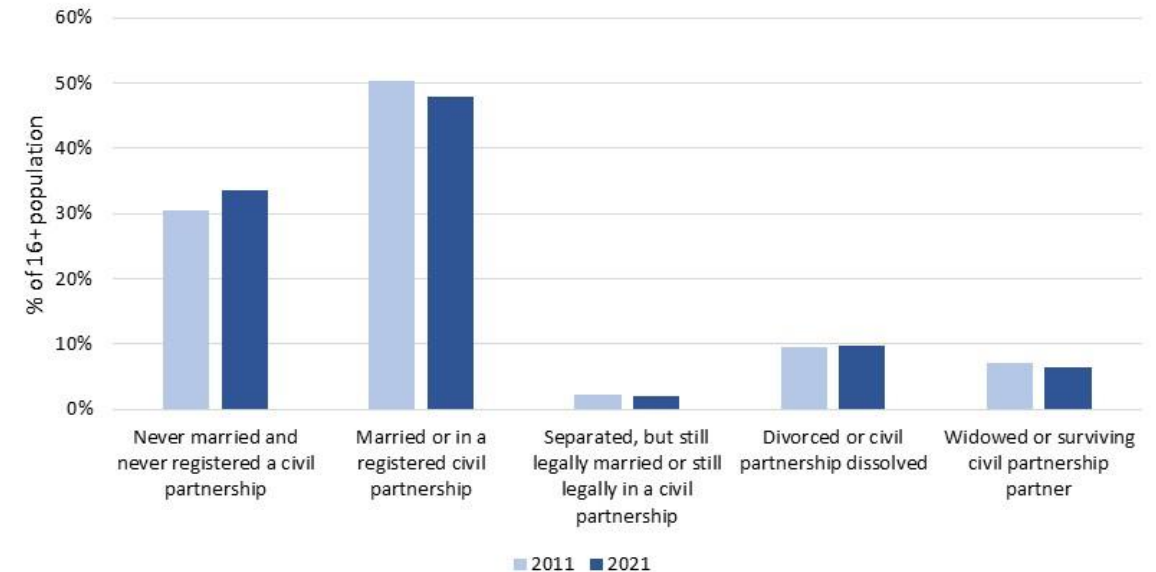


19.5% increase in those
never married or never in a
civil partnership

Proportion of 16+ population by marital status, Gloucestershire, South West and England and Wales, 2021



Proportion of Gloucestershire's population by marital status, 2011 and 2021



Household composition



30.4% of households were one person households

14.0% of households were one person households aged 66+

Little change in household composition since 2011



One person household
(30%)



Couples with children
(25%)



Couples with no children
(19%)

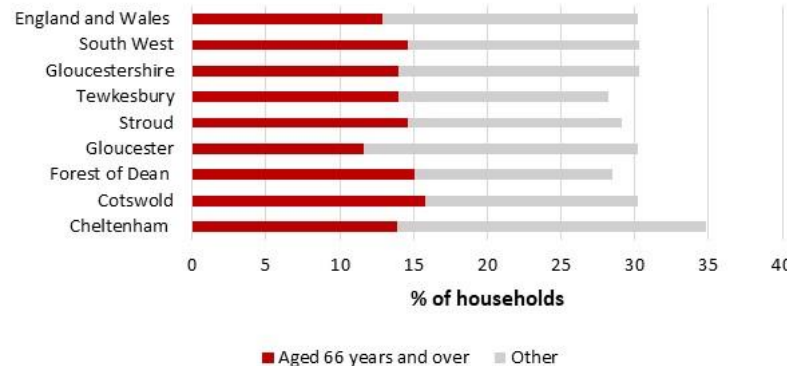


Other households
(17%)

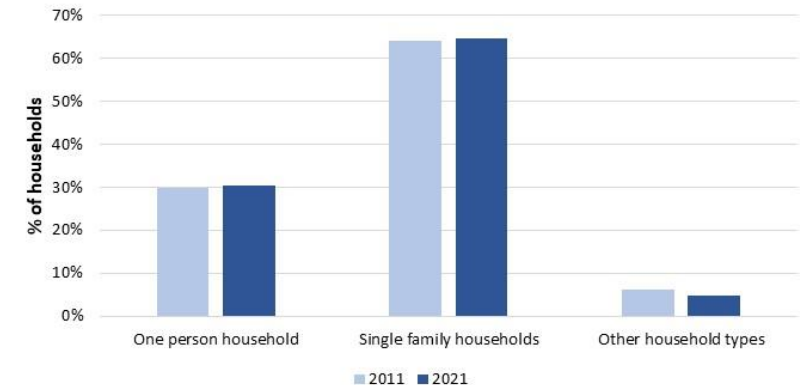


Lone parent family
(9%)

Breakdown of one person households by district, 2021



Proportion of Gloucestershire's households by composition type, 2011 and 2021



Self-reported health



1 in 2 people with very good health

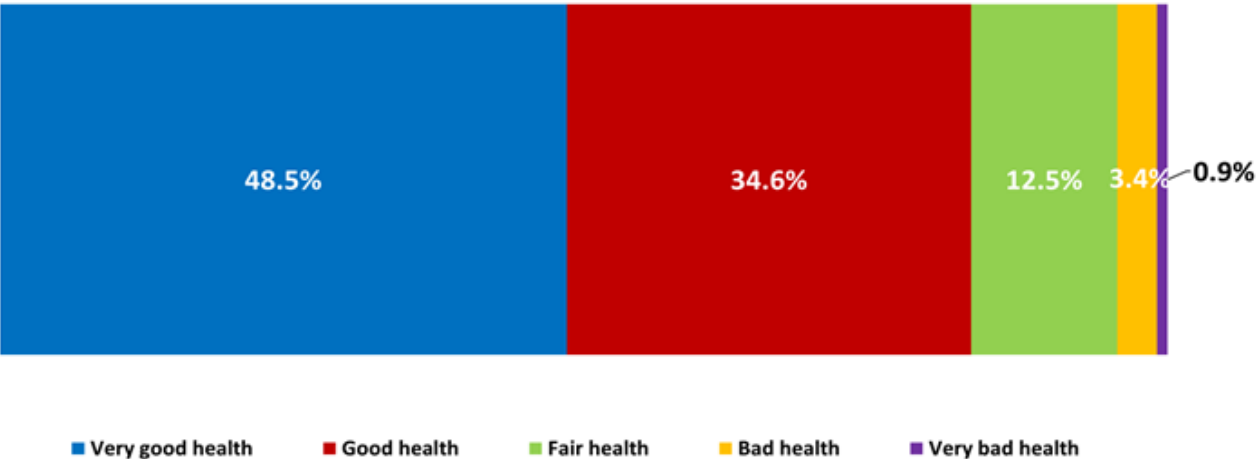


8.3% increase in people with fair, good or very good health

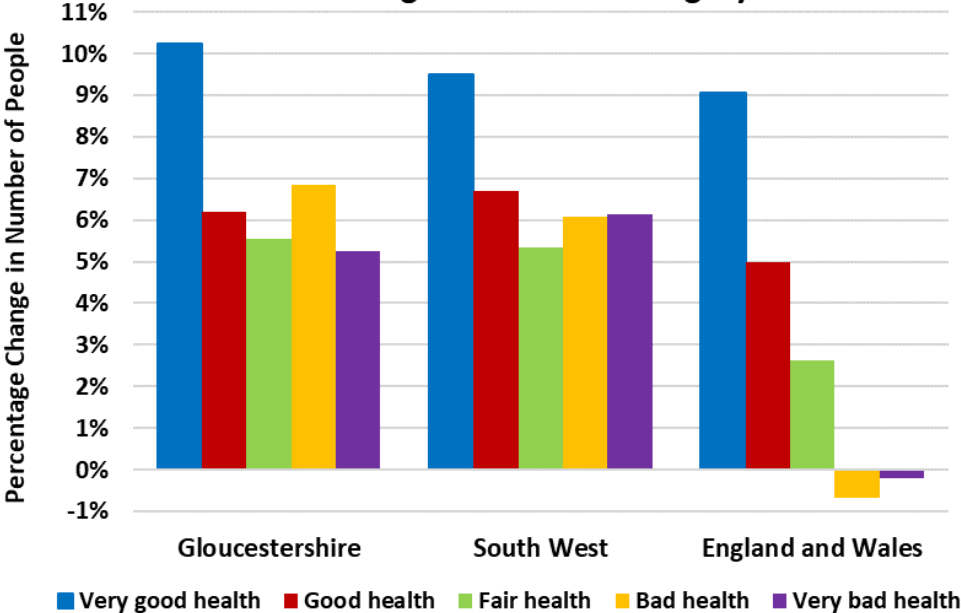


6.5% increase in people with bad or very bad health

Proportion of Gloucestershire’s population according to each general health category, 2021



Percentage change in number of people identifying with each general health category



Disability

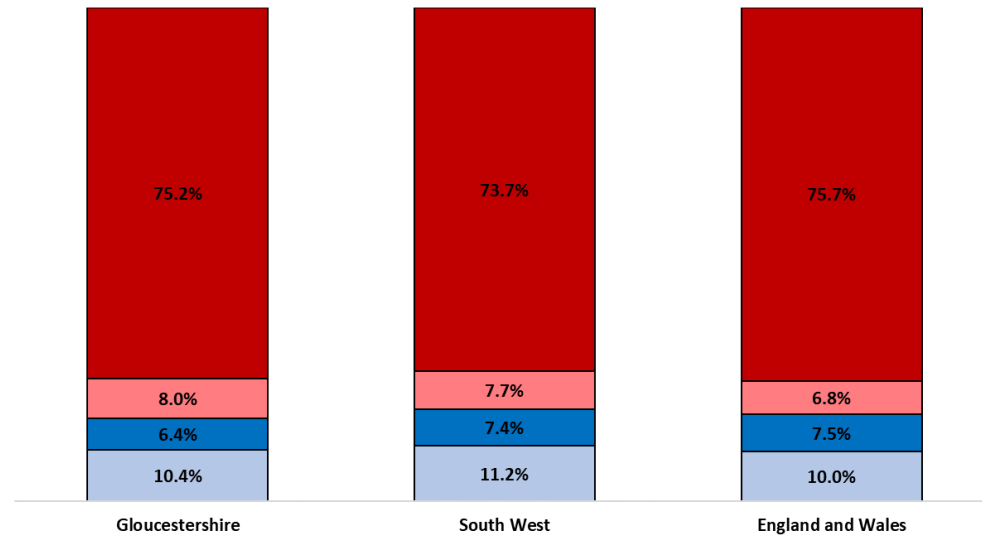
16.8% of the population are disabled under the Equality Act (2010)

6.4% not disabled but do have a long term physical or mental health condition(s)

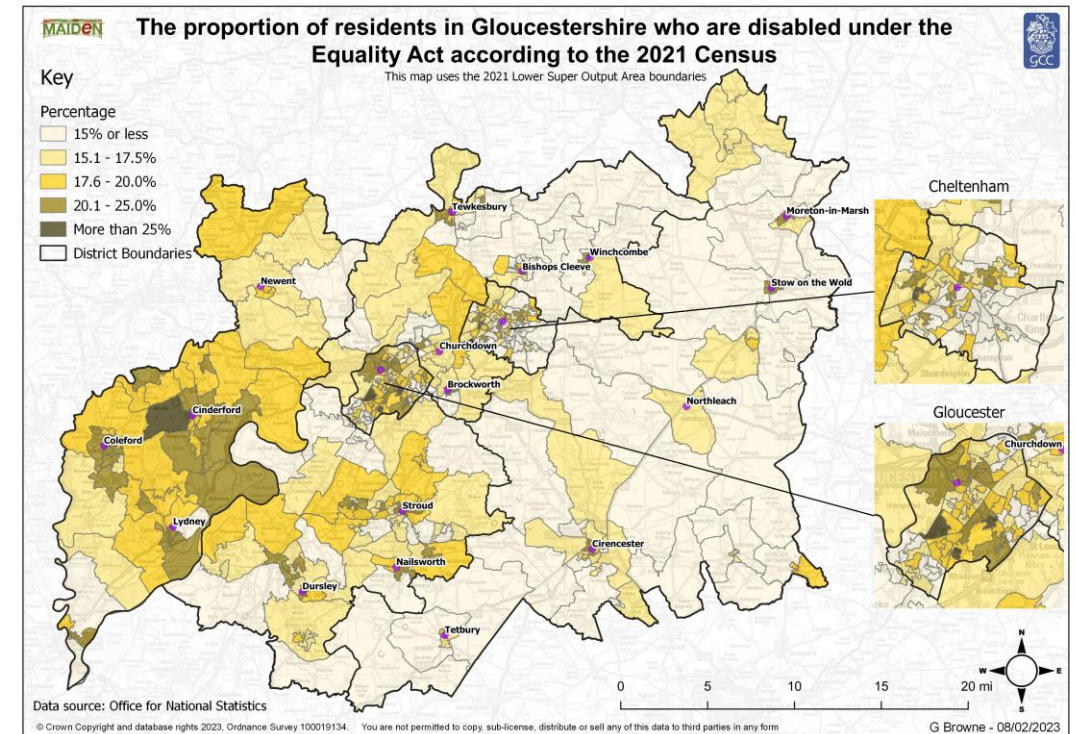


In some LSOAs **1 in 4** people are classed as disabled

Proportion of the population by disability status



- Not disabled under the Equality Act: No long term physical or mental health conditions
- Not disabled under the Equality Act: Has long term physical or mental health condition but day-to-day activities are not limited
- Disabled under the Equality Act: Day-to-day activities limited a lot
- Disabled under the Equality Act: Day-to-day activities limited a little



Unpaid carers

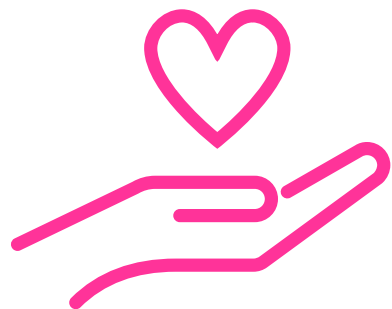


8.5% of Gloucestershire's residents are unpaid carers



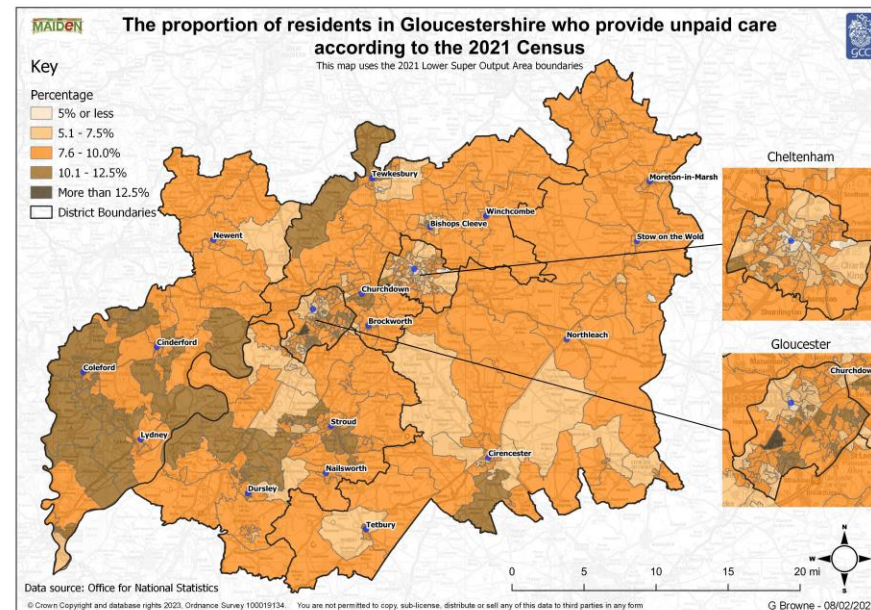
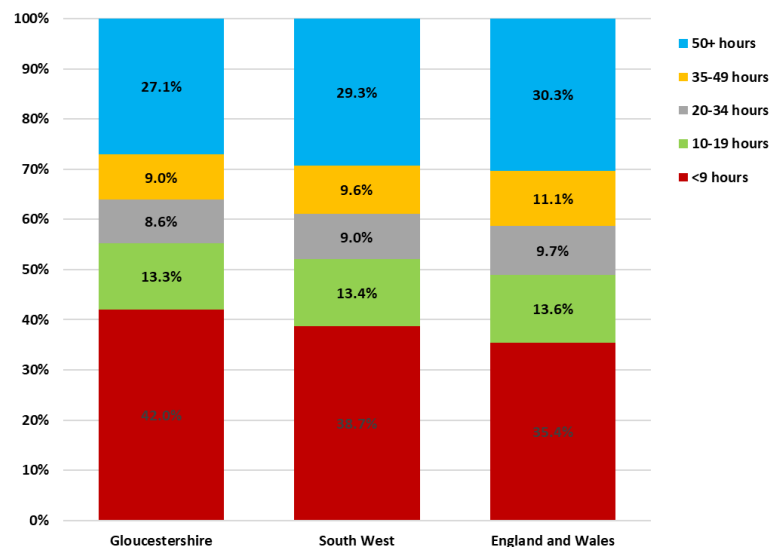
Most carers provide less than 9 hours or more than 50 hours care

Unequal distribution of the proportion of people providing unpaid care across the county



51,862
unpaid carers

Number of hours worked by unpaid carers



Armed forces veterans



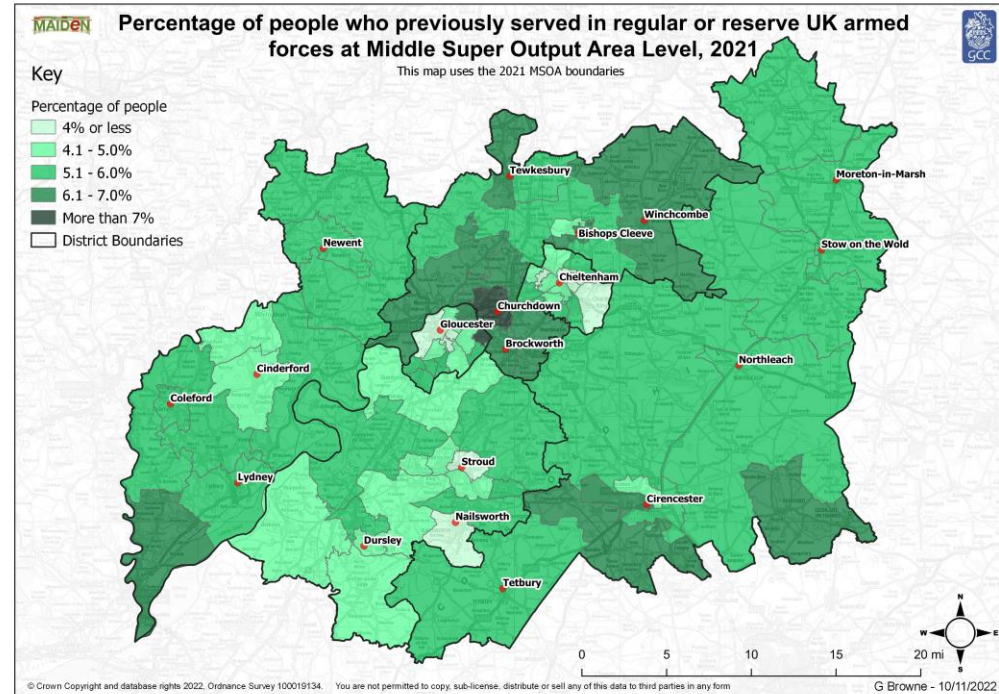
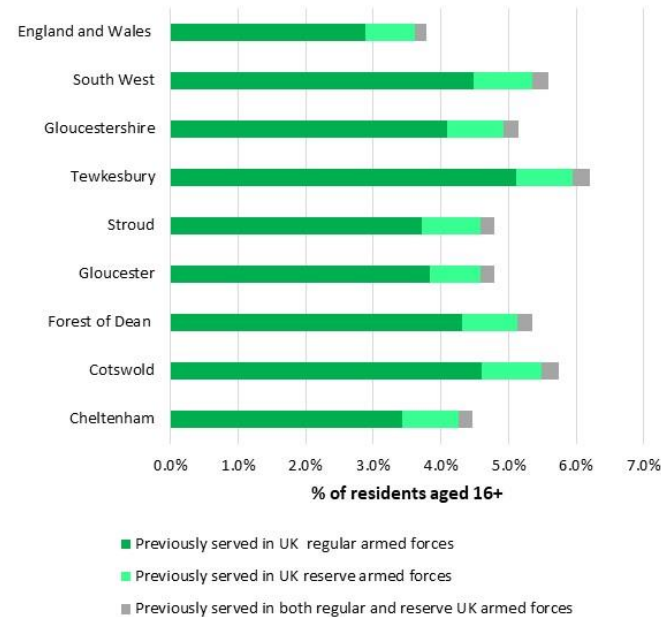
1 in 20 people aged
16+ are armed forces
veterans

27,418 people are armed
forces veterans



1 in 10 households
contained an armed
forces veteran

Percentage of 16+ residents who have
previously served in the armed forces, 2021



Education

Living our values every day



Accountable



Integrity



Empower



Respect



Excellence



Highest level of qualification

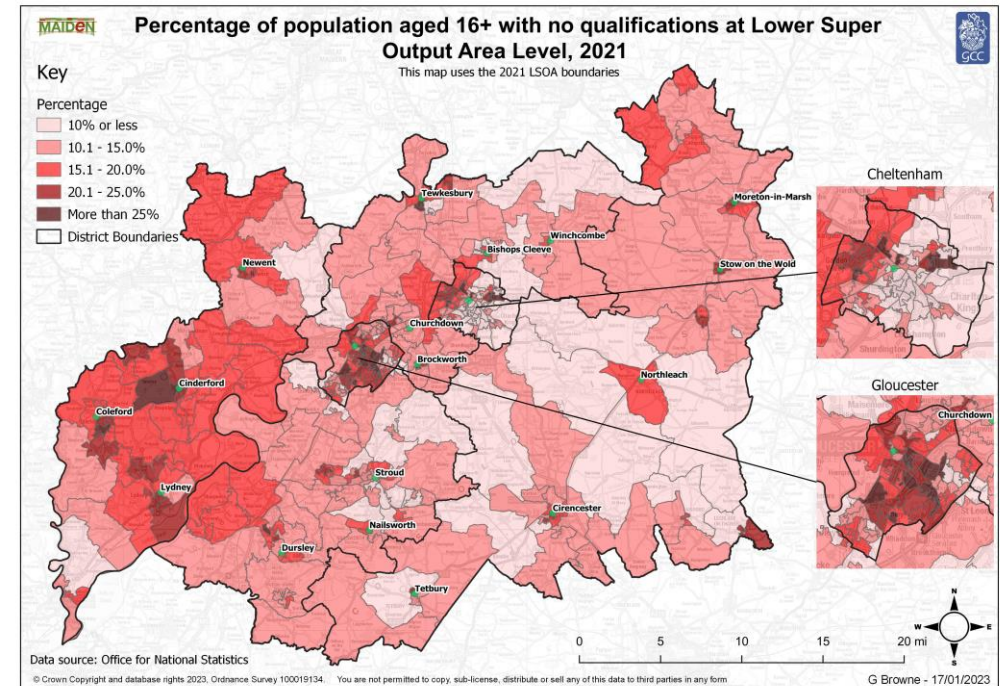
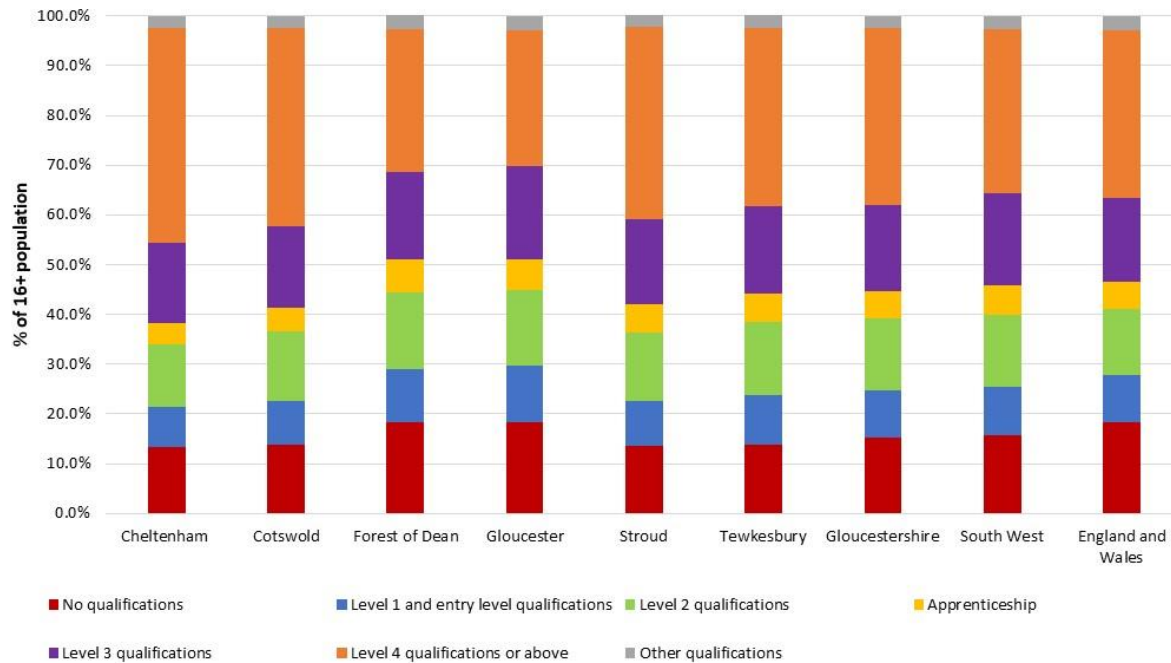


35.6% of 16+ year olds qualified to Level 4+

15.2% of 16+ year olds have no qualifications

5.5% of 16+ year olds have an apprenticeship

Percentage of the population aged 16+ by highest level of qualification, 2021



Employment

Living our values every day



Accountable



Integrity



Empower



Respect



Excellence



Economic activity



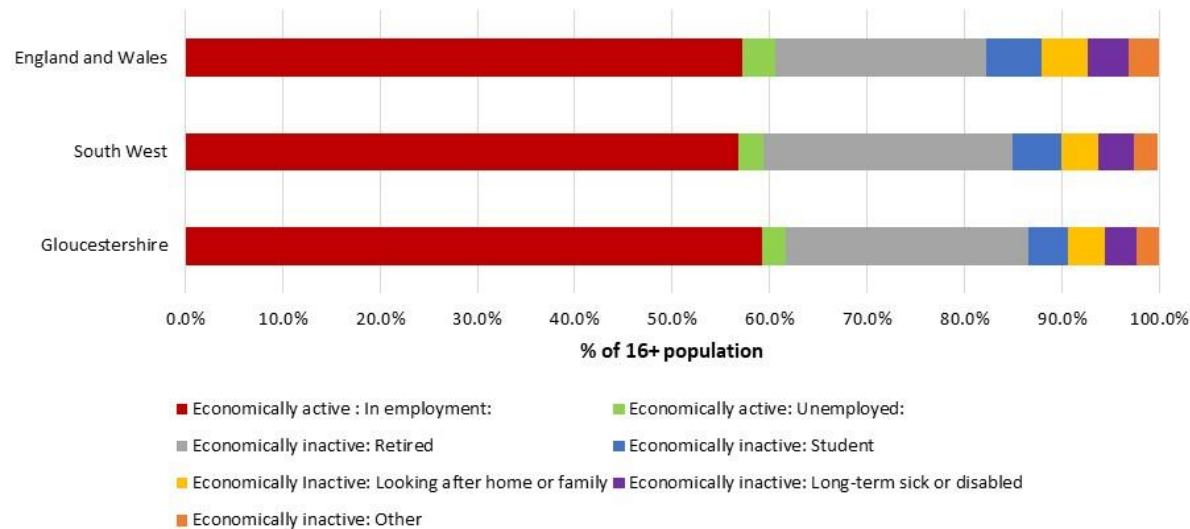
61.7% of 16+ were economically active

38.3% of 16+ were economically inactive

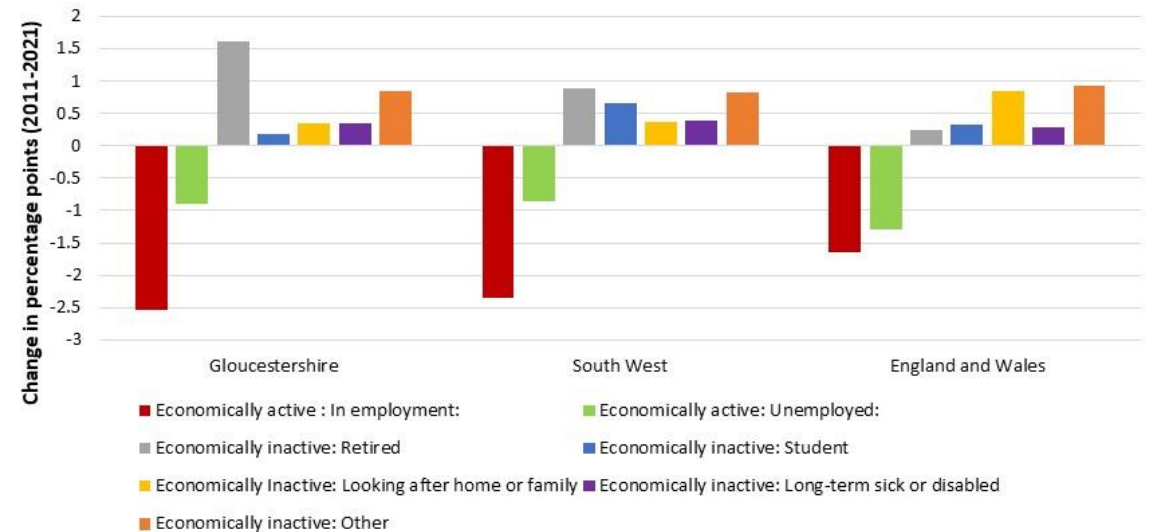


18.9% increase in economic inactivity

Proportion of Gloucestershire's 16+ by economic activity status, Gloucestershire, South West and England and Wales, 2021



Change in the proportion of the 16+ population's economic activity status



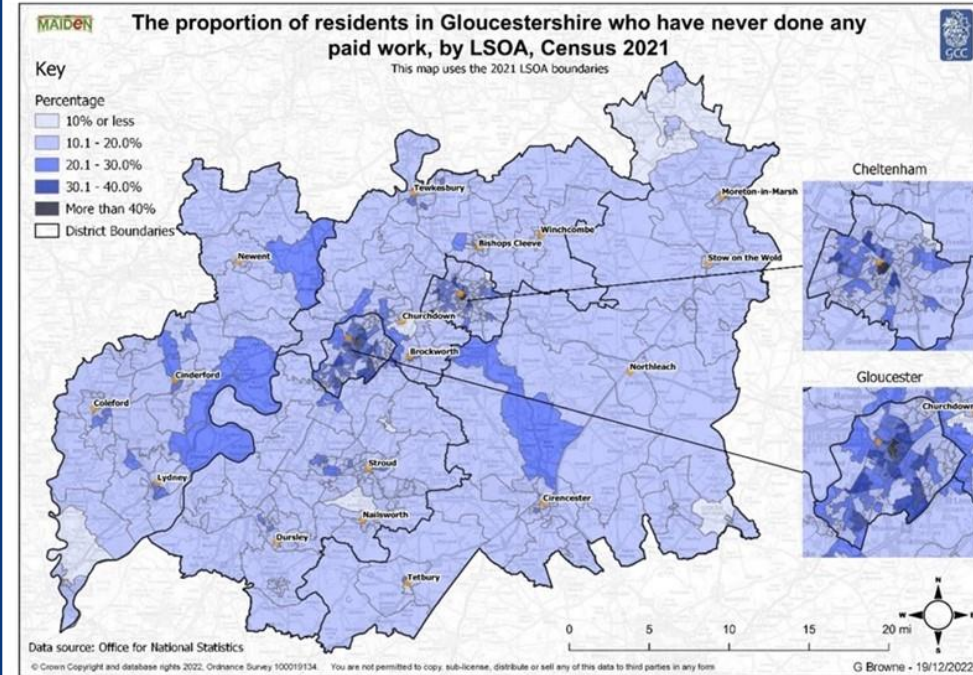
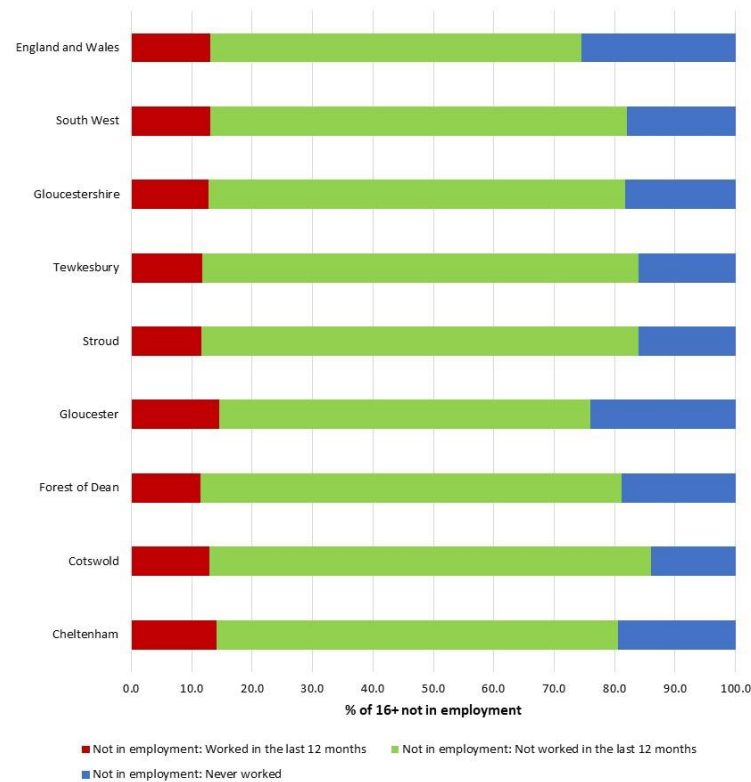
Not in employment

216,996 people 16+ not in employment

68.9% not in employment in the last 12 months

18.3% have never worked

Employment history of those 16+ not in employment, 2021



Industry



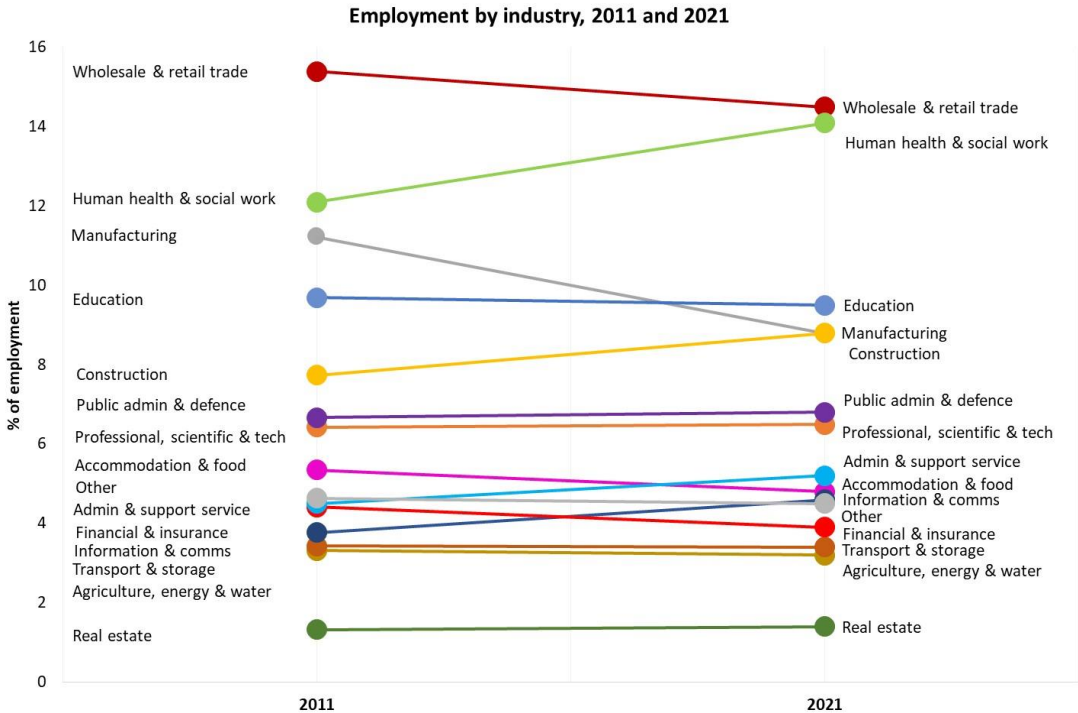
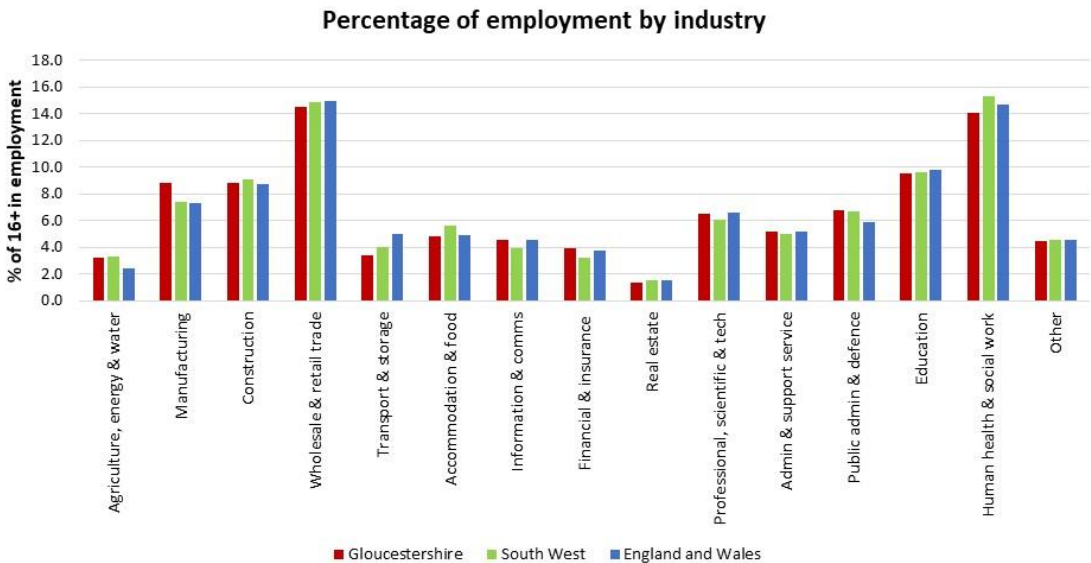
Wholesale & retail trade was the largest sector



Human health & social work was the second largest sector



18.3% decline in employment in manufacturing



Occupation



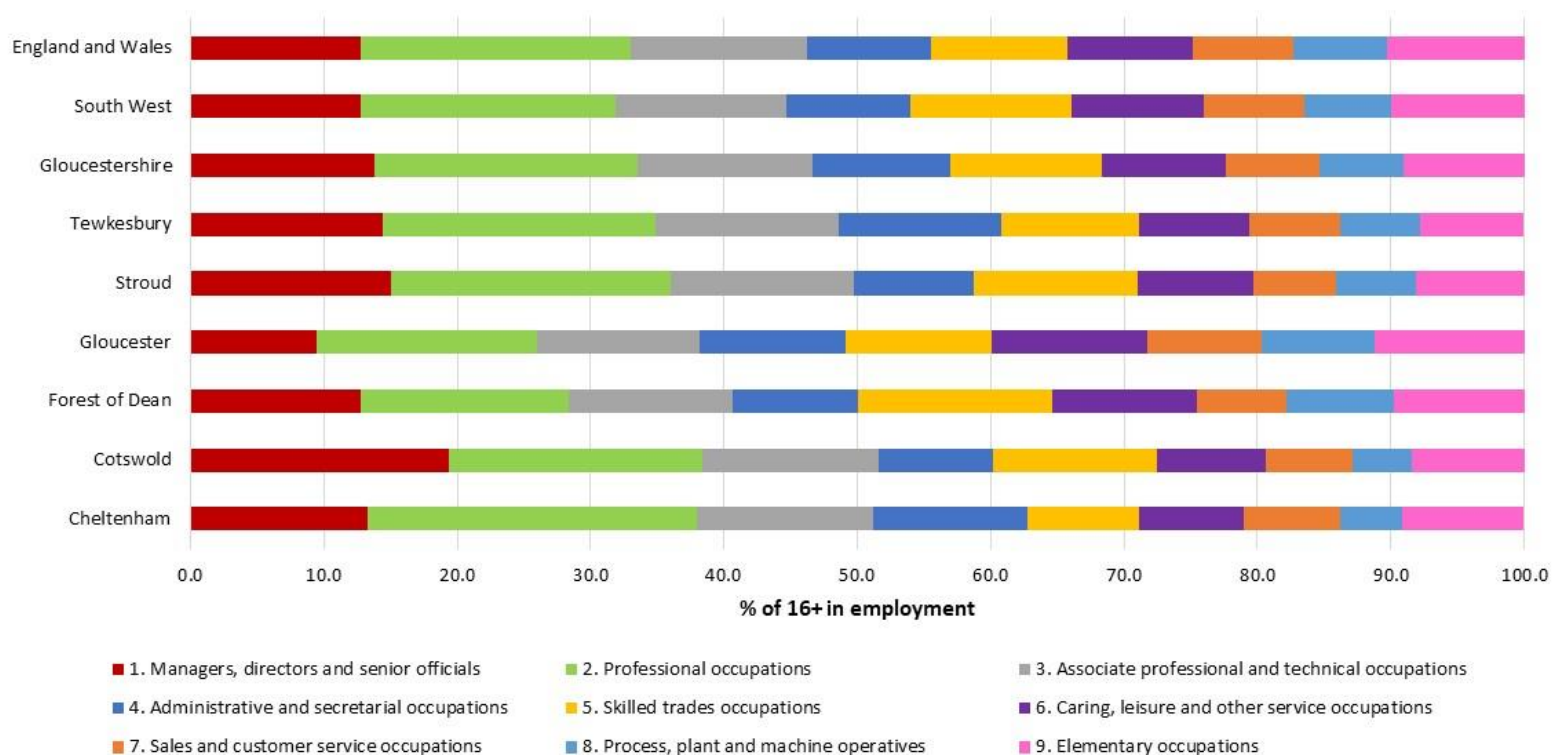
19.7% employed in professional occupations

46.5% employed in managerial, professional or associate professional occupations



11.3% employed in skilled trades

Percentage of employment by occupation, 2021



Education

Living our values every day



Accountable



Integrity



Empower



Respect



Excellence



Highest level of qualification

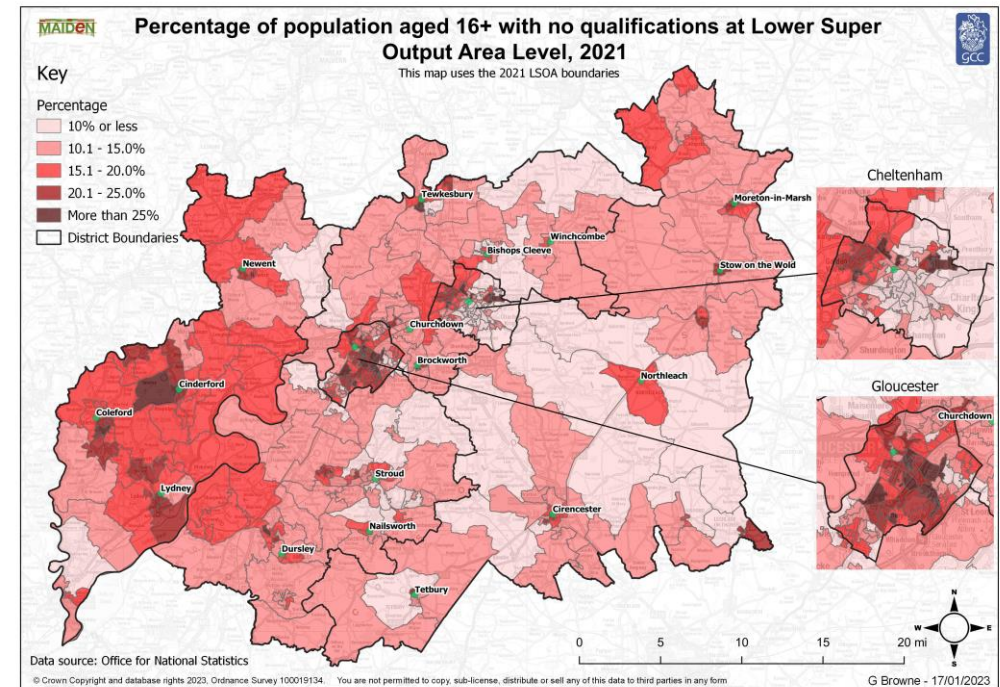
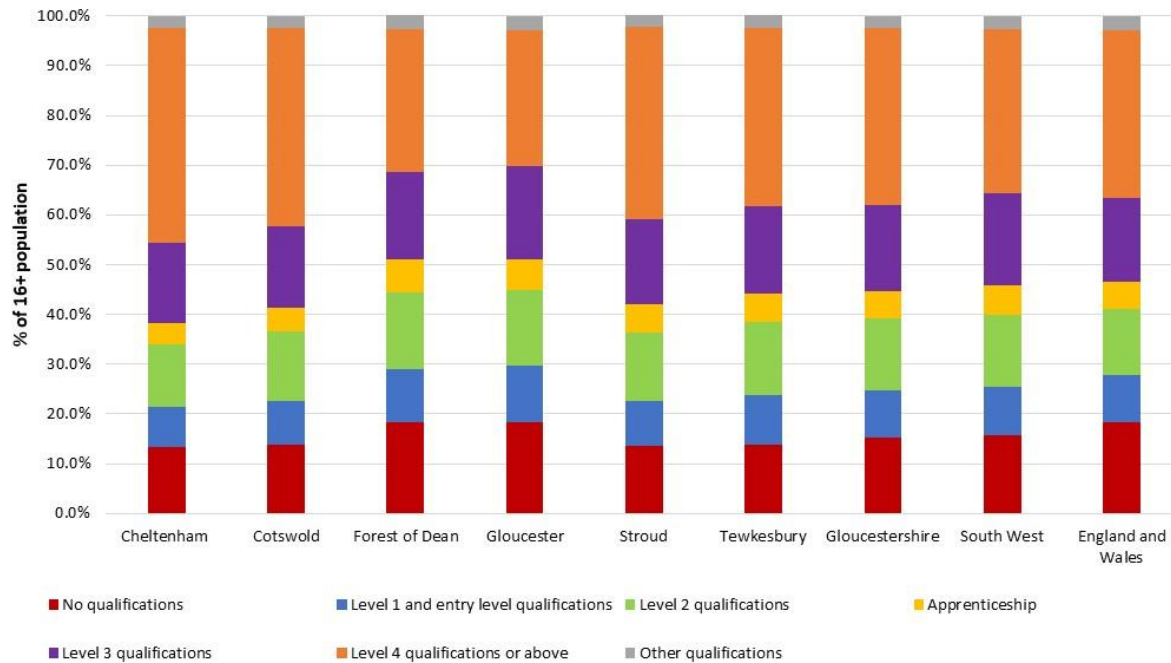


35.6% of 16+ year olds qualified to Level 4+

15.2% of 16+ year olds have no qualifications

5.5% of 16+ year olds have an apprenticeship

Percentage of the population aged 16+ by highest level of qualification, 2021



Housing

Living our values every day



Accountable



Integrity



Empower



Respect



Excellence



Tenure



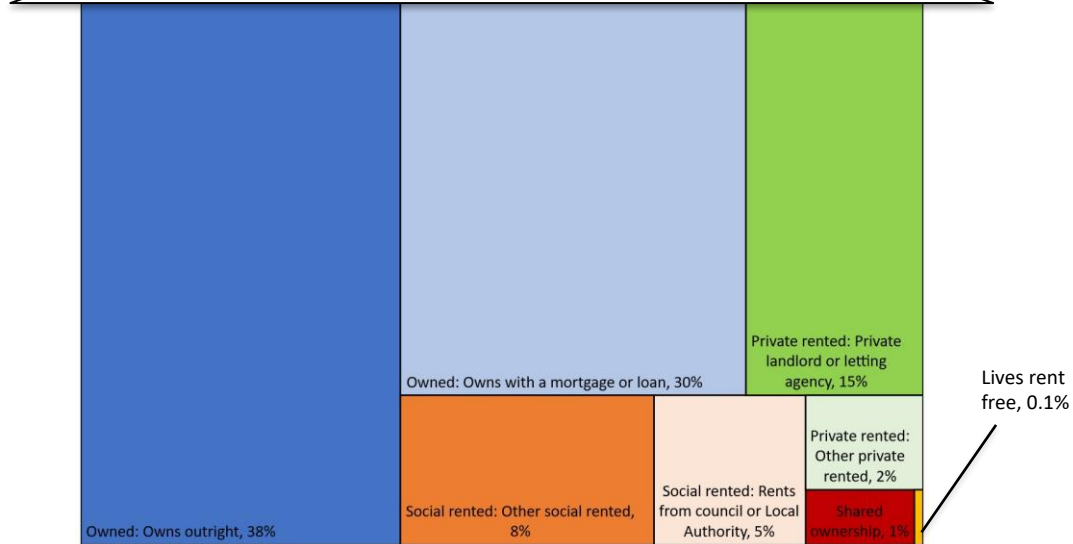
67.9% of households were owner occupied

13.1% of households were social rented

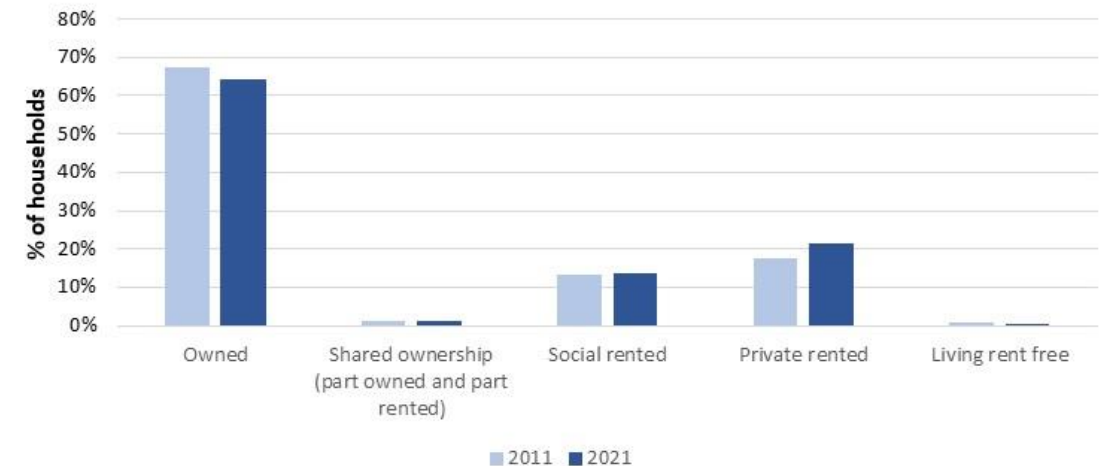


25.7% increase in households which were private rented

Household tenure,
Gloucestershire, 2021



Proportion of Gloucestershire's households by household tenure, 2011 and 2021



Household occupancy



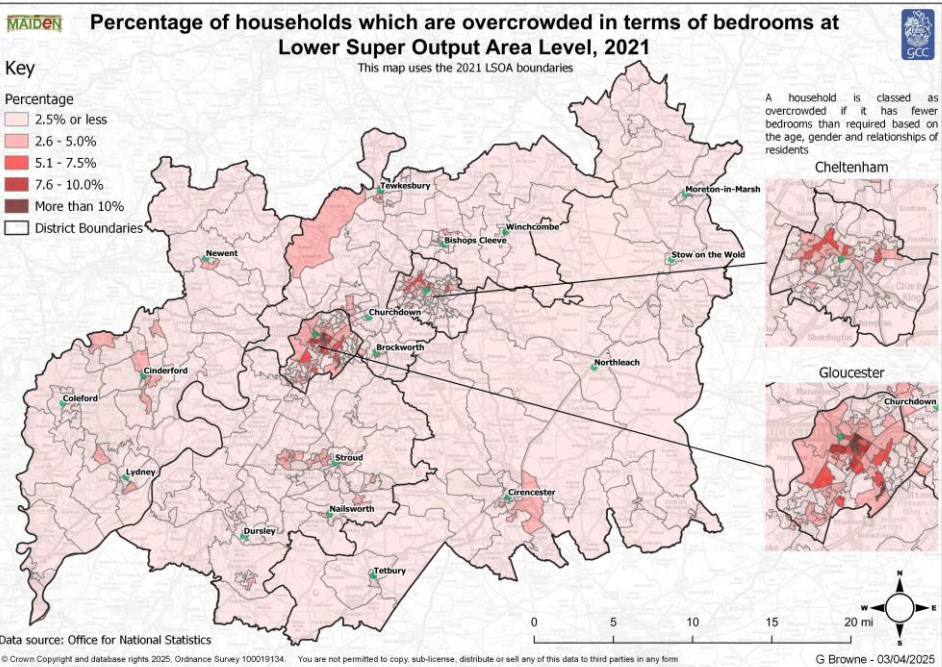
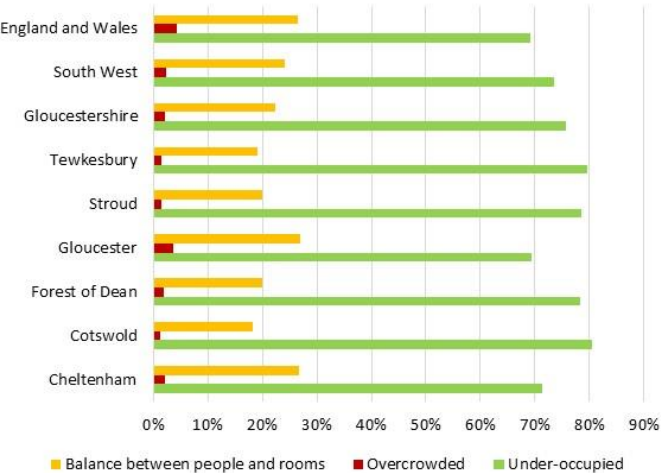
75.8% of households are under-occupied

2.0% of households are over occupied

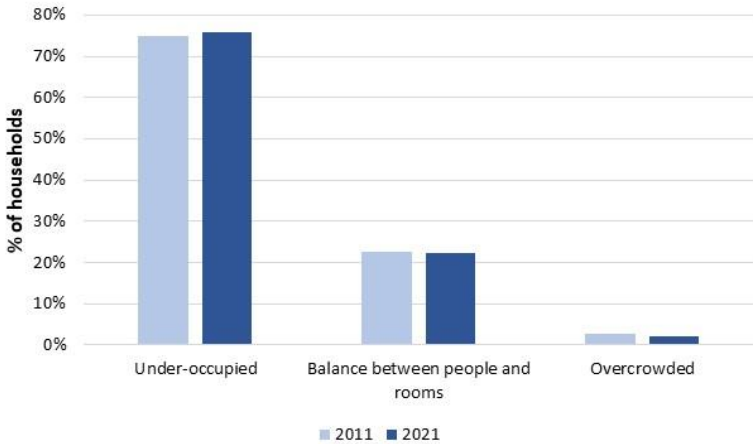


16.0% decline in overcrowded households

Percentage of households by occupancy (bedrooms), 2021



Proportion of Gloucestershire's households by occupancy (bedrooms), 2011 and 2021



Household car ownership



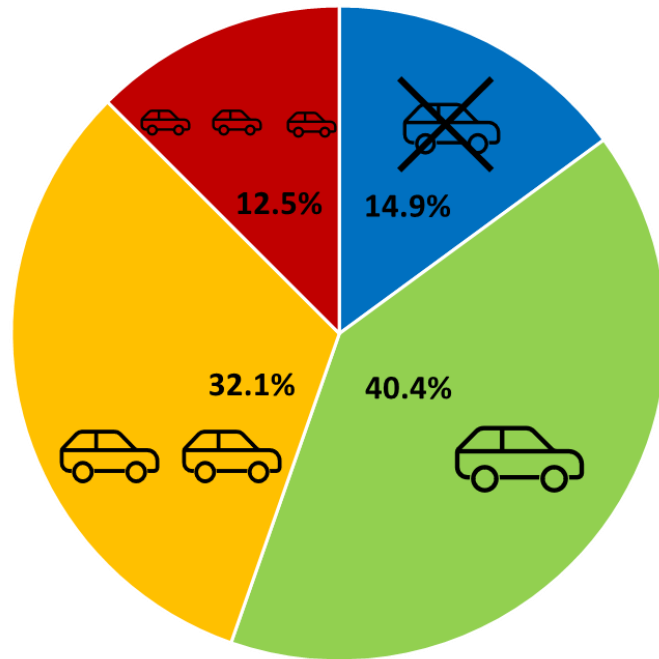
14.9% households
did not own a car or van



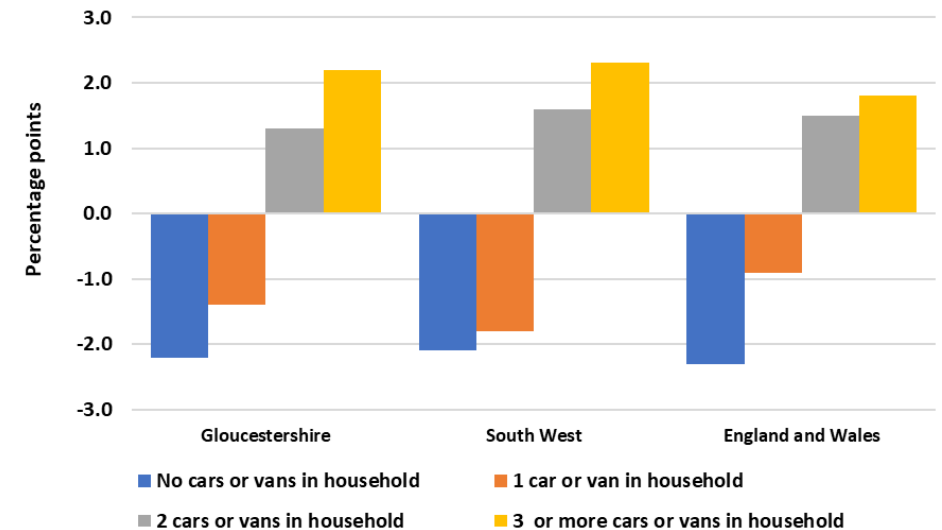
1 in 5 households
owned one car



11.7% increase in car
ownership between
2011-2021




Change in percentage points in the proportion of households by car or van availability, 2011-2021




Central heating



1.2% of households had no central heating

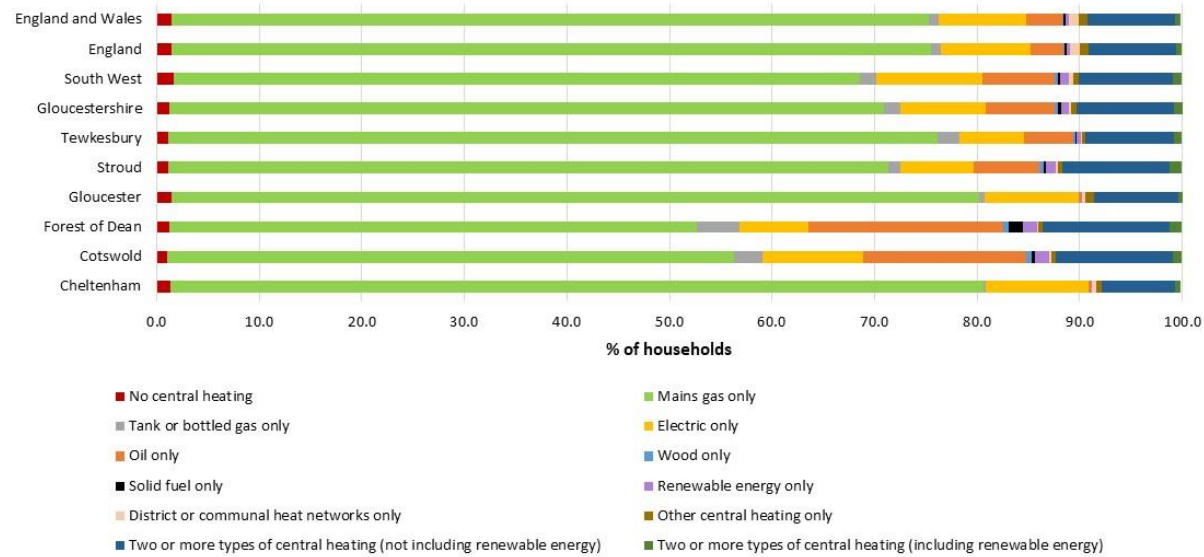


1.5% of households used renewable energy

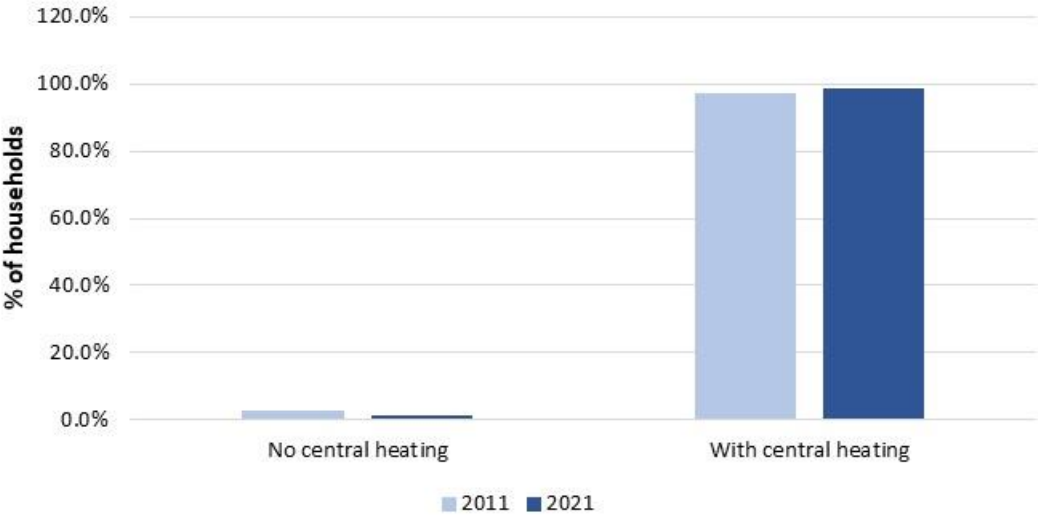


49.7% decrease in households without central heating

Percentage of households by types of central heating, 2021



Proportion of Gloucestershire's households by central heating, 2011 and 2021



Communal establishments

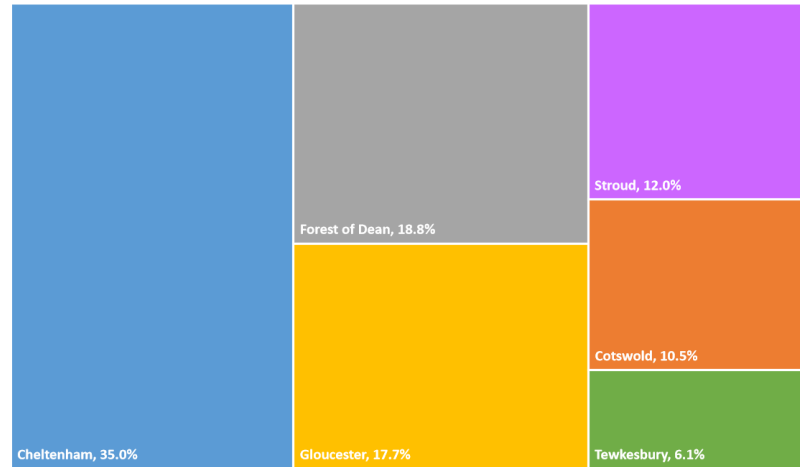
 **10,159** communal establishment residents

 **44.2%** residents lived in education establishments

 **3/5** residents are female

Distribution of communal establishment residents by district

Cheltenham Cotswold Forest of Dean Gloucester Stroud Tewkesbury

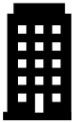


Education 44.2%

Top 3 communal establishments

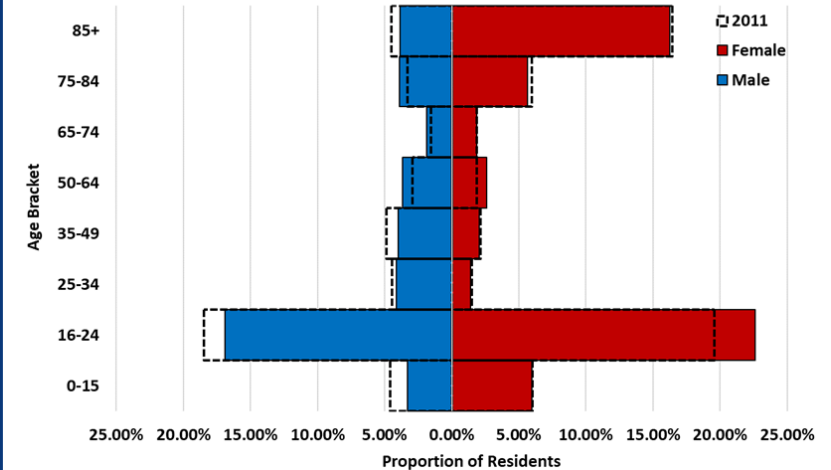


Non NHS/LA care home with nursing 21.3%



Non NHS/LA care home without nursing 18.9%

Proportion of Residents Living in Communal Establishments by Sex and Age Bracket in Gloucestershire, 2011 and 2021



Living our values every day



Accountable



Integrity



Empower



Respect



Excellence

