

Unemployment Bulletin

Issue 34 May 2011

Contents

Part 1: Summary

A summary of unemployment data at district, County, regional and national level

1

Part 2: County

Unemployment figures for the County compared to the South West and the rest of the UK

3

Part 3: Districts

A comparative break down of unemployment figures by district

4

Part 4: Wards

Further breakdown of unemployment figures by ward:

Cheltenham

6

Cotswolds

8

Forest of Dean

10

Gloucester

12

Stroud

14

Tewkesbury

16

Part 5: Map

Distribution of claimant rate across Gloucestershire

18

Part 6: Young People

Data about Young People Not in Education, Employment or Training (NEET)

20

Produced by:

The Research Team (Economics)
Chief Executive Support Unit
Gloucestershire County Council
June 2011

***The population figures used to calculate the claimant count rates have changed from working age (16-59f/64m) to aged 16-64 for both males and females. The last eleven months rates have been adjusted to reflect this change**

INTRODUCTION

The Unemployment Bulletin provides a monthly update on unemployment data for Gloucestershire, the South West region and the United Kingdom. It is produced by the Economic section of the County Council Chief Executive's Support Unit Research Team. The data is sourced from the Office for National Statistics via Nomis (www.nomis.co.uk).

The claimant count measures the number of people claiming unemployment-related benefit (currently Job Seeker's allowance). The claimant rate is the number of claimants as a proportion of the working age population.

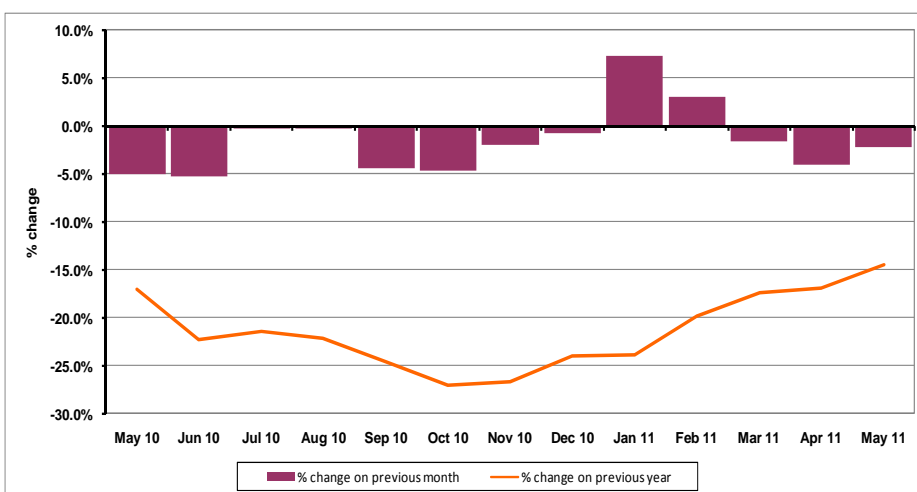
PART 1: SUMMARY

The claimant rate in Gloucestershire was 2.4 % in May 2011. This was the same as the April 2011 figure. The UK and South West rate decreased to 3.7% and 2.5% respectively. Gloucestershire's rate was 0.1% lower than the South West average of 2.5%, and 1.3% lower than the UK average of 3.7%.

The claimant count in Gloucestershire in May 2011 decreased by 203 people. The amount of people claiming in May 2011 was 2.2% lower than the number in April 2011. This compares to a 3.1% decline in the South West and a 1.0% decrease for the UK.

The year on year claimant count in Gloucestershire has decreased. The count was 14.6% lower in May 2011 than at the same point in the previous year as shown in the graph below.

Gloucestershire claimants - Month on Month and Year on Year change: May 2010 to May 2011



Source: ONS Crown Copyright Reserved

DISTRICTS AT A GLANCE

At a glance unemployment information grouped by district. Includes:

Claim count: Total number of people claiming Job Seekers Allowance in May 2011

Compared to last month: How much larger/smaller May's claim count is compared to April, expressed as a %

Claimant rate: The % of working population claiming Job Seekers Allowance in May 2011

Highest claiming ward: The ward with the highest claim count in that district and the rate

CHELTEMHAM BOROUGH

Claim count:	1,985
Compared to last month:	+1.0%
Claimant rate:	2.7%
Highest claiming wards	Hesters Way(5.5%) & Oakley (5.5%)

GLOUCESTER CITY

Claim count:	2,699
Compared to last month:	-1.7%
Claimant rate:	3.5%
Highest claiming ward	Westgate (7.7%)

COTSWOLD DISTRICT

Claim count:	658
Compared to last month:	-1.1%
Claimant rate:	1.3%
Highest claiming ward	Cirencester Watermoor (3.0%)

STROUD DISTRICT

Claim count:	1,282
Compared to last month:	-5.7%
Claimant rate:	1.9%
Highest claiming ward	Central (4.9%)

FOREST OF DEAN

Claim count:	1,231
Compared to last month:	-3.6%
Claimant rate:	2.4%
Highest claiming ward	Cinderford East (4.7%)

TEWKESBURY BOROUGH

Claim count:	986
Compared to last month:	-4.5%
Claimant rate:	2.0%
Highest claiming ward	Tewkesbury Prior's Park (4.3%)

YOUNG PEOPLE NOT IN EDUCATION, EMPLOYMENT OR TRAINING (NEET)

As at the end of May 2011 there were 586 young people aged 16-18 not in education, employment or training in Gloucestershire and this figure translates into an adjusted (*) 16-18 NEET population of 4.2%.

PART 2: UK, SW AND GLOUCESTERSHIRE INDICATORS

The unemployment situation in Gloucestershire compared to the South West and the UK.

Claimant Rate

Figure 1: Claimant Rate for Gloucestershire, the South West and UK over the past year

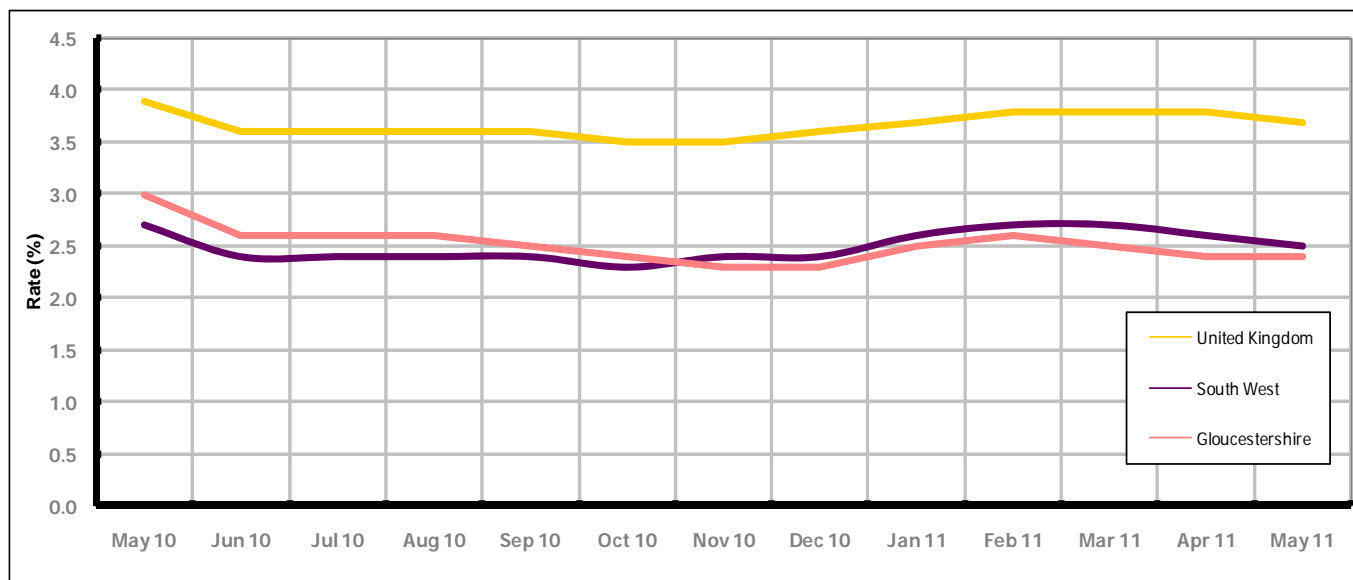


Figure 1 shows the claimant rate for Gloucestershire at 2.4% in May 2011. The rate remained higher than the South West average, until November 2010, when it fell below the South West rate, it has been persistently lower by approximately 1.3% against the UK average during the same period. The May 2011 rate remained the same as last month.

Claimant Count

Table 1: Analysis of UK, South West and Gloucestershire Claimant Counts

Area	Claimant Count in May 2011	% change on April 2011	Average % change over the last six months	Consecutive months decreasing
UK	1,504,913	-1.0%	+0.9%	2
South West	81,712	-3.1%	+0.5%	2
Gloucestershire	8,841	-2.2%	+0.4%	2

Table 1 shows that in May 2011, the number of claimants in Gloucestershire was 2.2% lower than the number in April 2011.

The average change in claimants in Gloucestershire for the six months to May 2011 was + 0.4%. This is 0.5% lower than the UK average and 0.1% lower than the South West average.

PART 3: LOCAL AUTHORITY DISTRICT ANALYSIS

Claimant Rate and Claimant Count

Figure 2: Claimant Rate (%) across Gloucestershire - May 2011

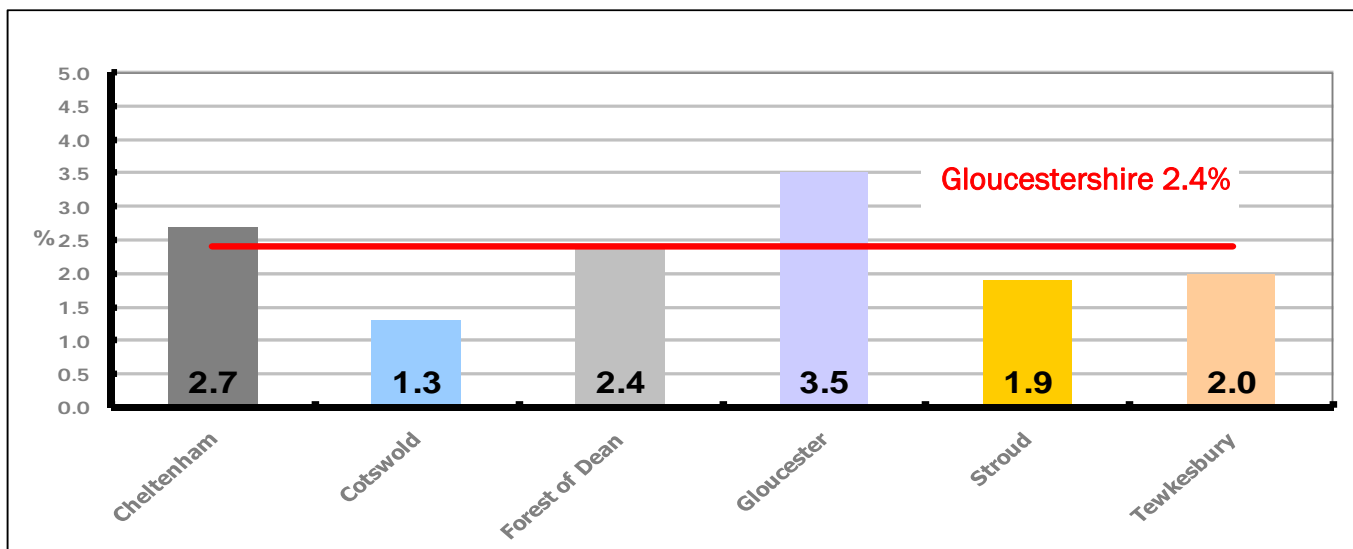


Figure 2 shows the claimant rate for May 2011 in Gloucestershire. Between April 2011 and May 2011 Cheltenham and Cotswold districts remained the same, while the remaining districts underwent a decline.

Figure 3: Total claimants over the past year across Gloucestershire Districts

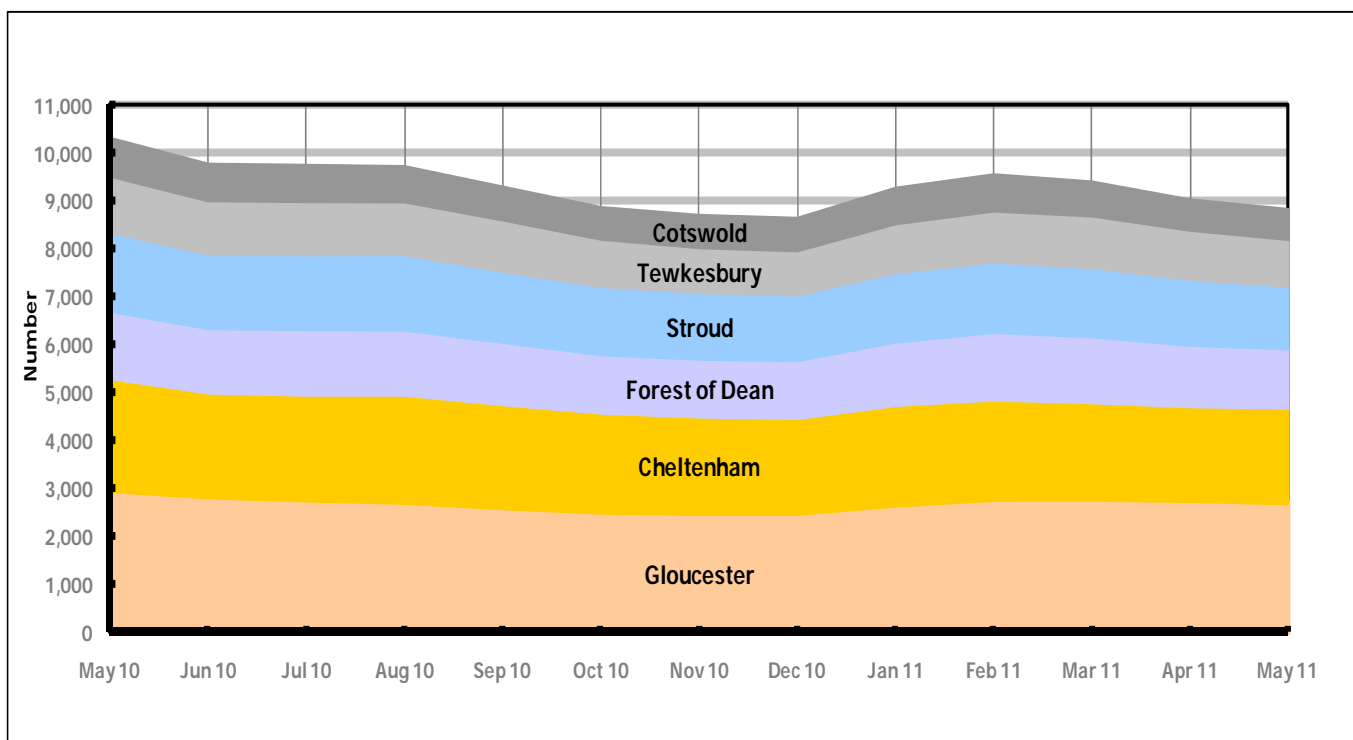


Figure 3 shows the overall claimant count by district for Gloucestershire over the past year. It shows the number of claimants have been declining since May 2010, with the exception of January and February 2011 when they increased.

Table 2: Analysis of Gloucestershire and District Claimant Counts

Total	May 11 Number	May 11 Rate	Apr 11 Number	Apr 11 Rate	Monthly change	% monthly change	Monthly change of rate
Gloucestershire	8,841	2.4	9,044	2.4	-203	-2.2%	0.0
Cheltenham	1,985	2.7	1,965	2.7	20	1.0%	0.0
Cotswold	658	1.3	665	1.3	-7	-1.1%	0.0
Forest of Dean	1,231	2.4	1,277	2.5	-46	-3.6%	-0.1
Gloucester	2,699	3.5	2,745	3.6	-46	-1.7%	-0.1
Stroud	1,282	1.9	1,360	2.0	-78	-5.7%	-0.1
Tewkesbury	986	2.0	1,032	2.1	-46	-4.5%	-0.1

Table 2 shows the change in the claimant count in May 2011 compared to April 2011. Cheltenham experienced a slight increase in the number of claimants, while the remaining districts underwent a decline.

Table 3: Analysis of Male Gloucestershire and District Claimant Counts

Male	May 11 Number	May 11 Rate	Apr 11 Number	Apr 11 Rate	Monthly change	% monthly change	Monthly change of rate
Gloucestershire	5,946	3.2	6,092	3.3	-146	-2.4%	-0.1
Cheltenham	1,356	3.6	1,324	3.5	32	2.4%	0.1
Cotswold	412	1.6	431	1.7	-19	-4.4%	-0.1
Forest of Dean	818	3.2	854	3.3	-36	-4.2%	-0.1
Gloucester	1,833	4.8	1,873	4.9	-40	-2.1%	-0.1
Stroud	864	2.5	913	2.7	-49	-5.4%	-0.2
Tewkesbury	663	2.7	697	2.8	-34	-4.9%	-0.1

Table 3 shows the change in the male claimant count in May 2011 compared to April 2011. Cheltenham experienced a slight increase in the number of male claimants, while the remaining districts underwent a decline.

Table 4: Analysis of Female Gloucestershire and District Claimant Counts

Female	May 11 Number	May 11 Rate	Apr 11 Number	Apr 11 Rate	Monthly change	% monthly change	Monthly change of rate
Gloucestershire	2,895	1.6	2,952	1.6	-57	-1.9%	0.0
Cheltenham	629	1.7	641	1.8	-12	-1.9%	-0.1
Cotswold	246	1.0	234	0.9	12	5.1%	0.1
Forest of Dean	413	1.6	423	1.6	-10	-2.4%	0.0
Gloucester	866	2.3	872	2.3	-6	-0.7%	0.0
Stroud	418	1.2	447	1.3	-29	-6.5%	-0.1
Tewkesbury	323	1.3	335	1.3	-12	-3.6%	0.0

Table 4 shows the change in the female claimant count in May 2011 compared to April 2011. Cotswold district experienced a slight increase in the number of male claimants, while the remaining districts underwent a decline.

PART 4: LOCAL AUTHORITY DISTRICT AND WARD ANALYSIS

This section covers the six districts and a comparison of their constituent wards.

4.1 Cheltenham Borough

Claimant Rate and Claimant Count

Figure 4: Cheltenham Borough claimant rate over the last year

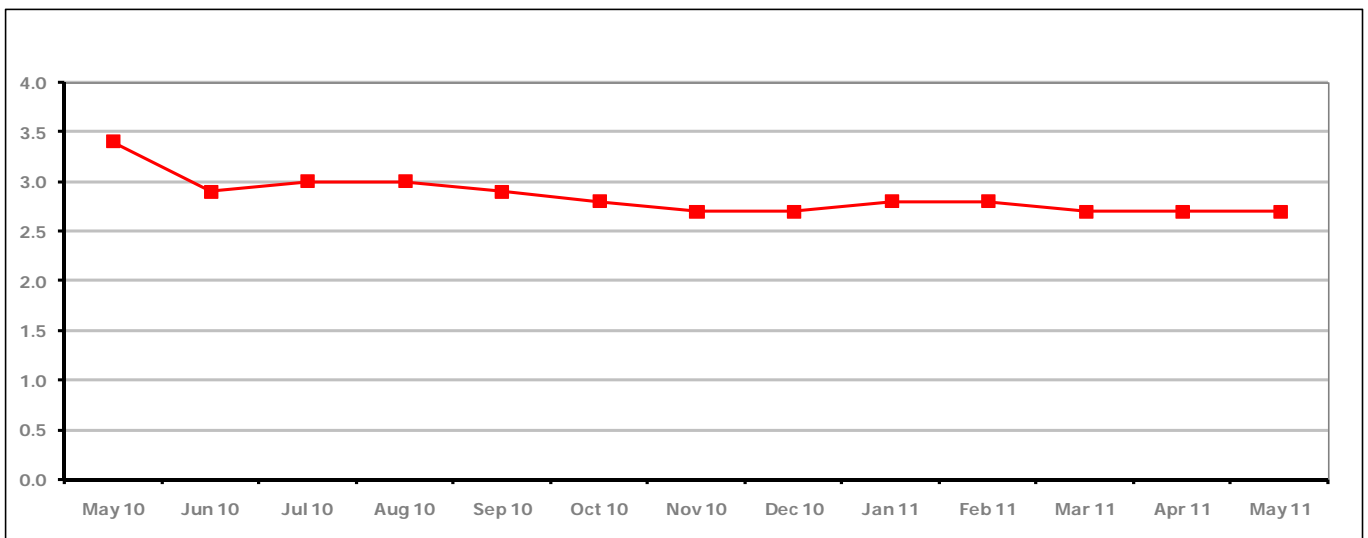


Figure 4 shows the claimant rate in Cheltenham remained the same as last month at 2.7%.

Figure 5: Cheltenham Borough claimants - Month on Month and Year on Year change

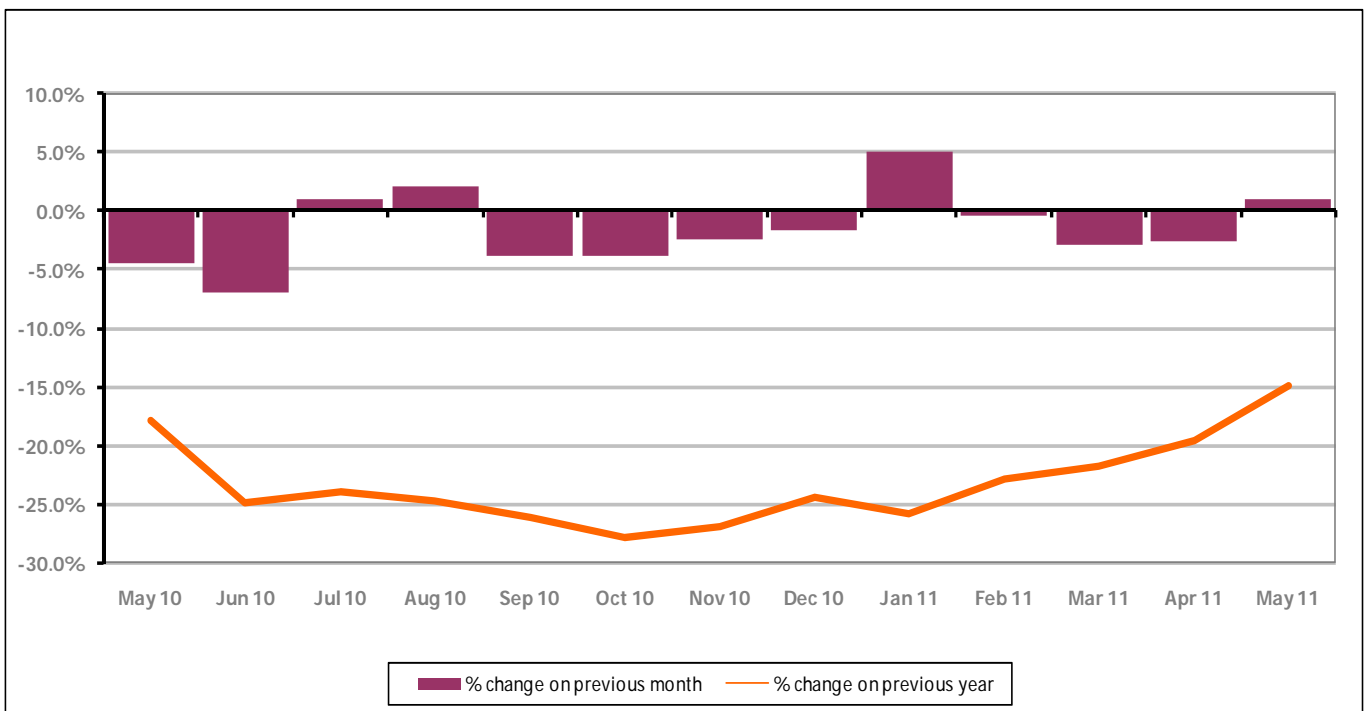


Figure 5 shows the claimant count increased by 1.0% since last month. The change on the previous year has increased in May 2011 compared to April 2011 to -15.0%.

PART 4: LOCAL AUTHORITY DISTRICT AND WARD ANALYSIS

4.1 Cheltenham Borough continued...

Figure 6: Claimant rates across Cheltenham Borough wards - May 2011

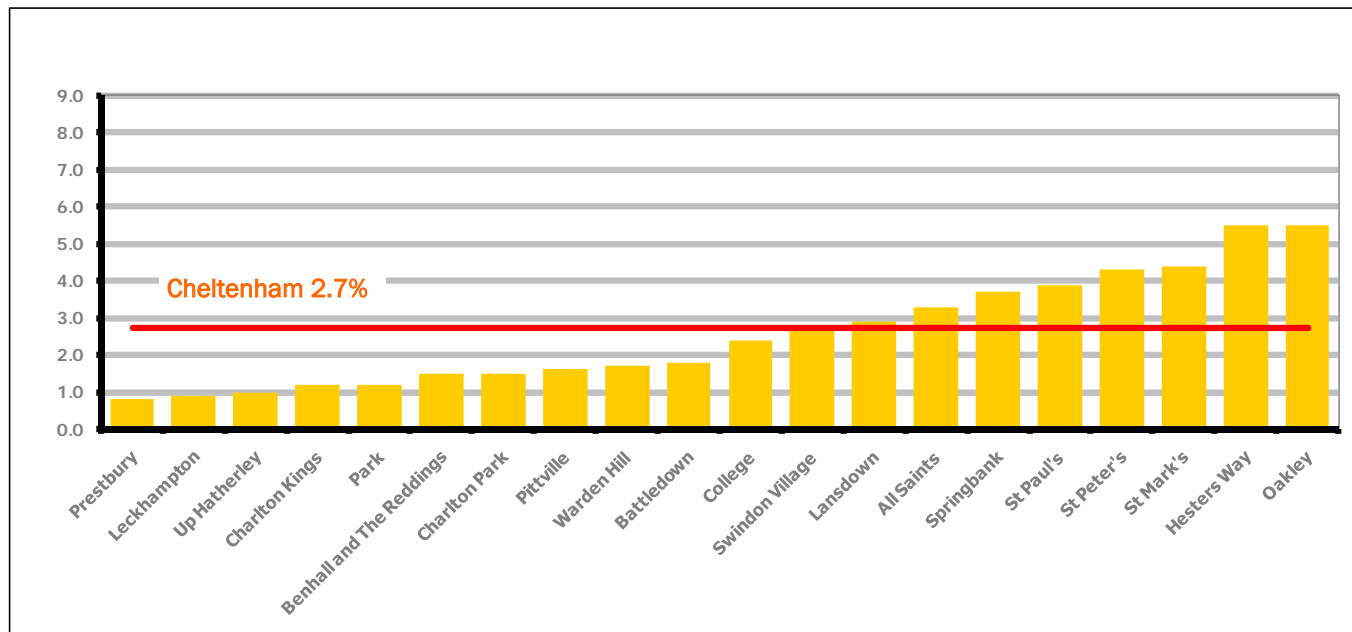
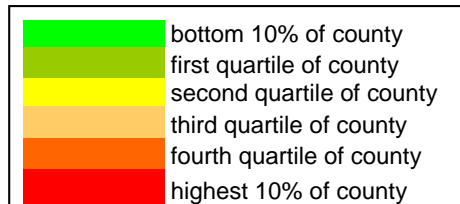


Figure 6 shows the claimant rates for Cheltenham Borough wards. The red line represents the average claimant rate across the Borough of 2.7%. Eight wards lie above the average.

Table 5: Analysis of Claimant Count at Cheltenham Borough ward level - May 2011

District	Ward	Rate	Rank*
Cheltenham	Prestbury	0.8	10
Cheltenham	Leckhampton	0.9	19
Cheltenham	Up Hatherley	1.0	29
Cheltenham	Charlton Kings	1.2	40
Cheltenham	Park	1.2	40
Cheltenham	Benhall and The Reddings	1.5	63
Cheltenham	Charlton Park	1.5	63
Cheltenham	Pittville	1.6	72
Cheltenham	Warden Hill	1.7	76
Cheltenham	Battledown	1.8	82
Cheltenham	College	2.4	99
Cheltenham	Swindon Village	2.7	108
Cheltenham	Lansdown	2.9	112
Cheltenham	All Saints	3.3	119
Cheltenham	Springbank	3.7	122
Cheltenham	St Paul's	3.9	123
Cheltenham	St Peter's	4.3	129
Cheltenham	St Mark's	4.4	131
Cheltenham	Hesters Way	5.5	138
Cheltenham	Oakley	5.5	138



* 1 = "best" and 142 = "worst"

Table 5 shows overall claimant rates for Cheltenham Borough wards and their position relative to all wards in Gloucestershire.

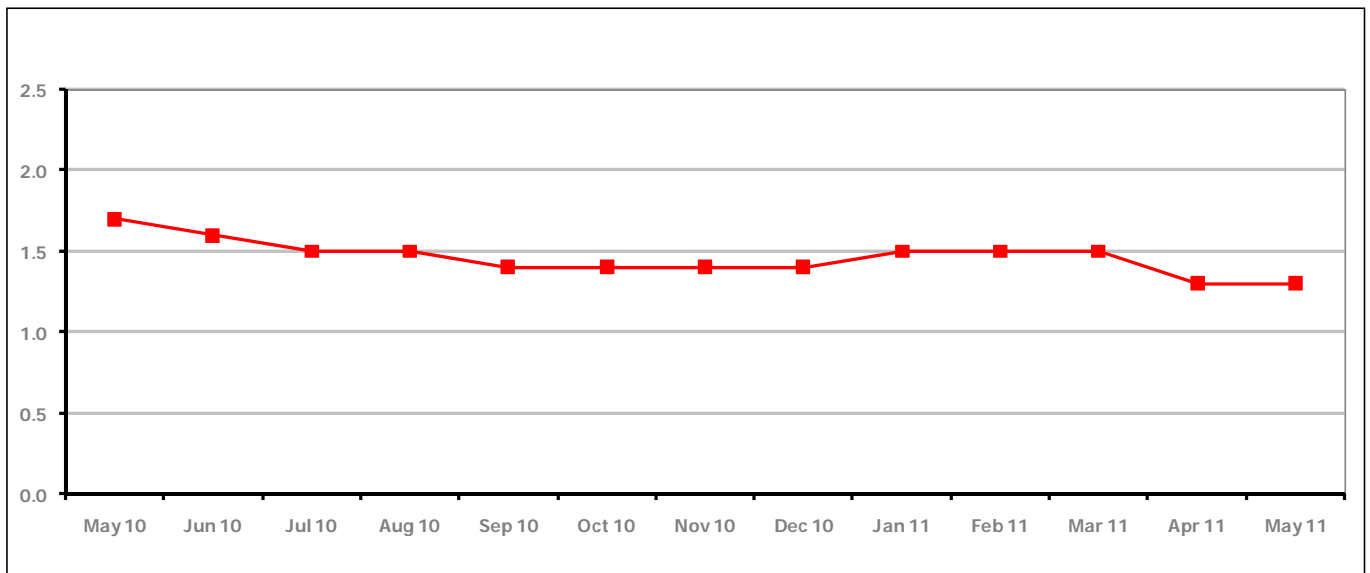
PART 4: LOCAL AUTHORITY DISTRICT AND WARD ANALYSIS**4.2 Cotswold District****Claimant Rate and Claimant Count***Figure 7: Cotswold District claimant rate over the last year*

Figure 7 shows the claimant rate in Cotswold District remained the same as last month at 1.3%.

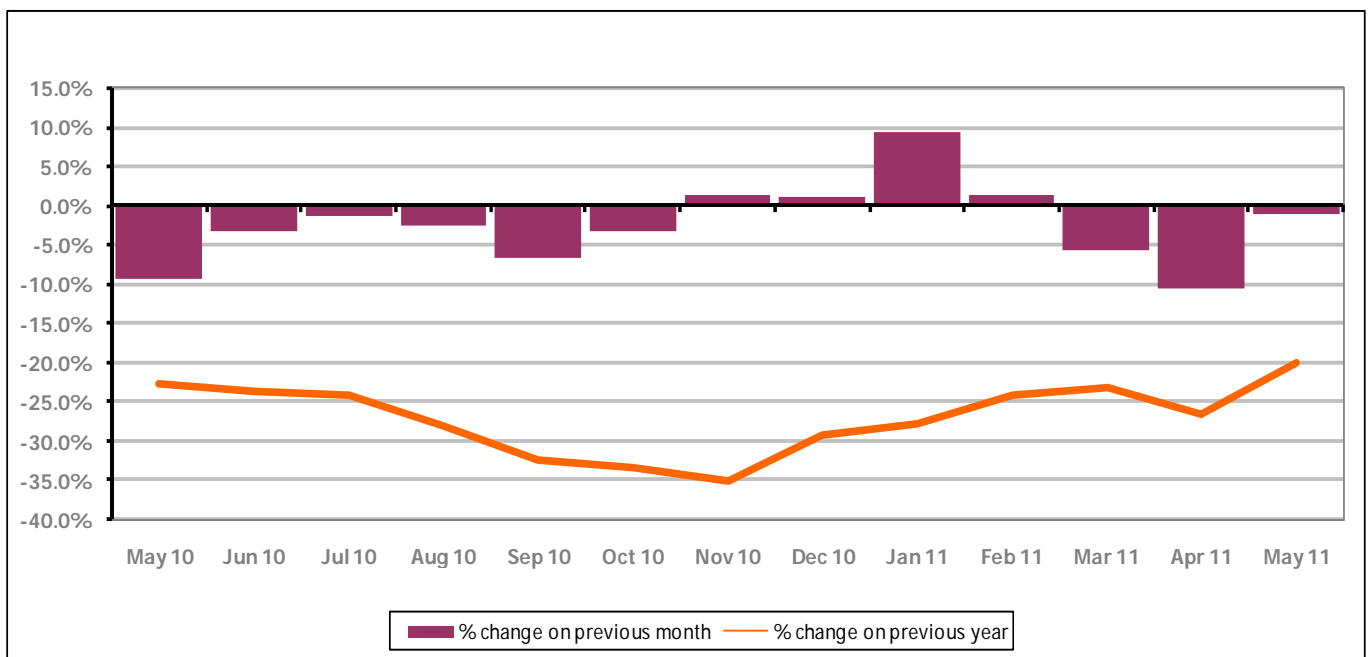
Figure 8: Cotswold District claimants - Month on Month and Year on Year change

Figure 8 shows the claimant count decreased by -1.1% since April 2011. The change on the previous year has increased from April 2011 to May 2011 to -20.1%.

PART 4: LOCAL AUTHORITY DISTRICT AND WARD ANALYSIS

4.2 Cotswold District continued...

Figure 9: Claimant rates across Cotswold District wards - May 2011

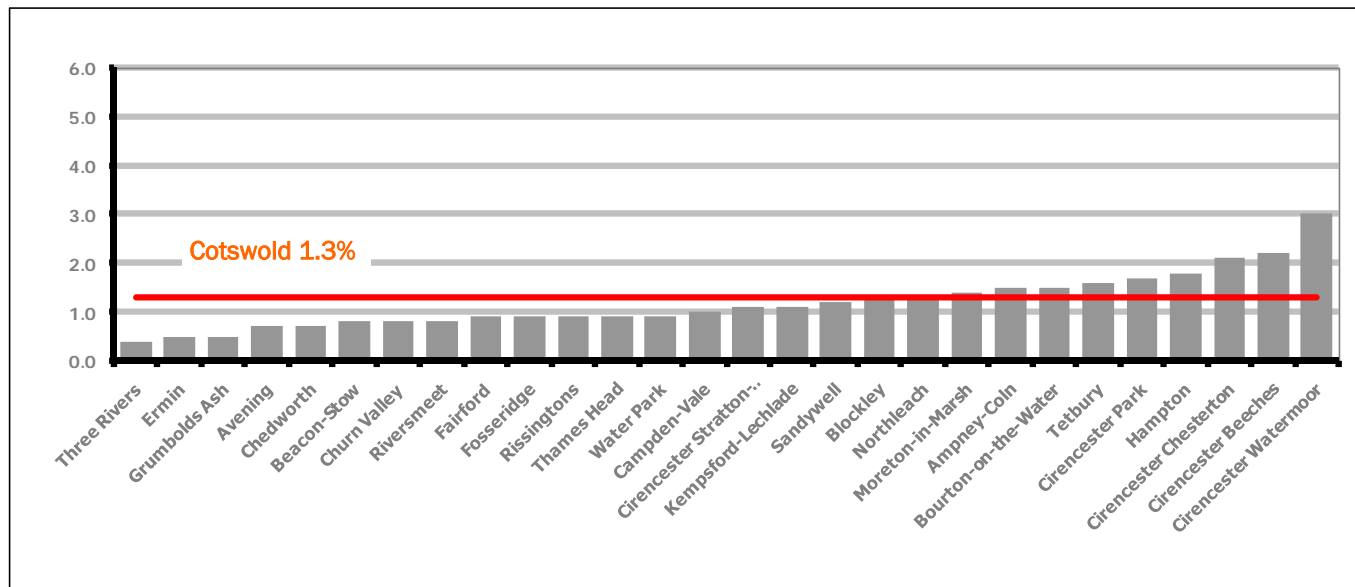


Figure 9 shows the claimant rates for Cotswold District wards. The red line represents the average claimant rate across the District of 1.3%. Nine wards lie above the average.

Table 6: Analysis of Claimant Count at Cotswold District ward level - May 2011

District	Ward	Rate	Rank*
Cotswolds	Three Rivers	0.4	3
Cotswolds	Ermin	0.5	4
Cotswolds	Grumbolds Ash	0.5	4
Cotswolds	Avening	0.7	7
Cotswolds	Chedworth	0.7	7
Cotswolds	Beacon-Stow	0.8	10
Cotswolds	Churn Valley	0.8	10
Cotswolds	Riversmeet	0.8	10
Cotswolds	Fairford	0.9	19
Cotswolds	Fosseridge	0.9	19
Cotswolds	Rissingtons	0.9	19
Cotswolds	Thames Head	0.9	19
Cotswolds	Water Park	0.9	19
Cotswolds	Campden-Vale	1.0	29
Cotswolds	Cirencester Stratton-Whiteway	1.1	36
Cotswolds	Kempsford-Lechlade	1.1	36
Cotswolds	Sandywell	1.2	40
Cotswolds	Blockley	1.3	48
Cotswolds	Northleach	1.3	48
Cotswolds	Moreton-in-Marsh	1.4	56
Cotswolds	Ampney-Coln	1.5	63
Cotswolds	Bourton-on-the-Water	1.5	63
Cotswolds	Tetbury	1.6	72
Cotswolds	Cirencester Park	1.7	76
Cotswolds	Hampton	1.8	82
Cotswolds	Cirencester Chesterton	2.1	91
Cotswolds	Cirencester Beeches	2.2	95
Cotswolds	Cirencester Watermoor	3.0	115

	bottom 10% of county
	first quartile of county
	second quartile of county
	third quartile of county
	fourth quartile of county
	highest 10% of county

* 1 = "best" and 142 = "worst"

Table 6 shows overall claimant rates for Cotswold District wards and their position relative to all wards in Gloucestershire.

PART 4: LOCAL AUTHORITY DISTRICT AND WARD ANALYSIS

4.3 Forest of Dean District

Claimant Rate and Claimant Count

Figure 10: Forest of Dean District claimant rate over the last year

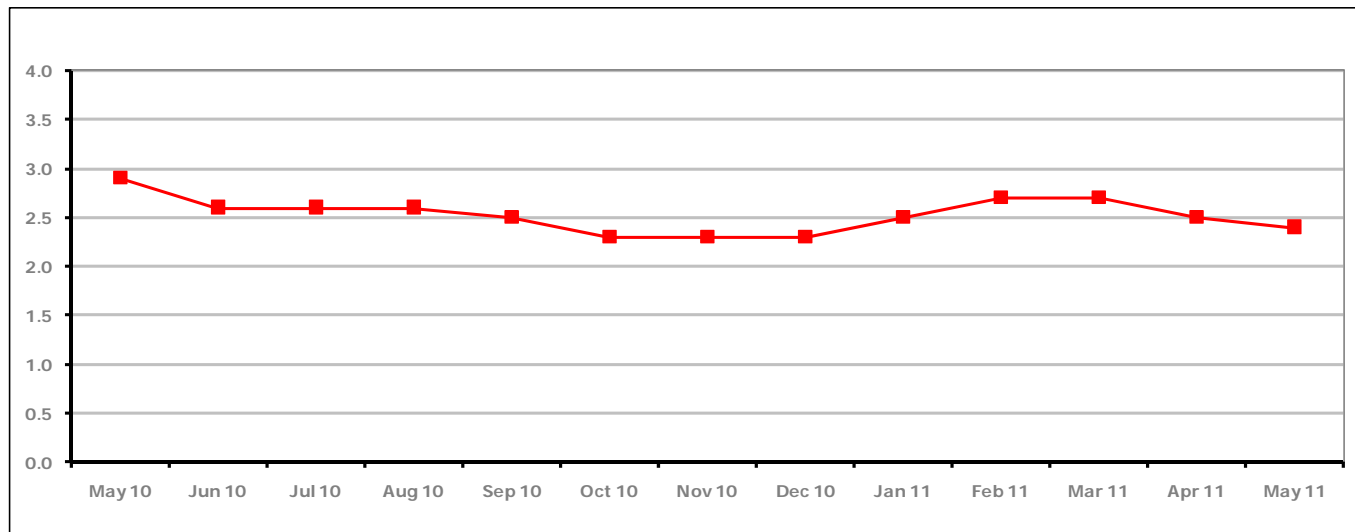


Figure 10 shows the claimant rate in the Forest of Dean decreased in May 2011 to 2.4%.

Figure 11: Forest of Dean District claimants - Month on Month and Year on Year change

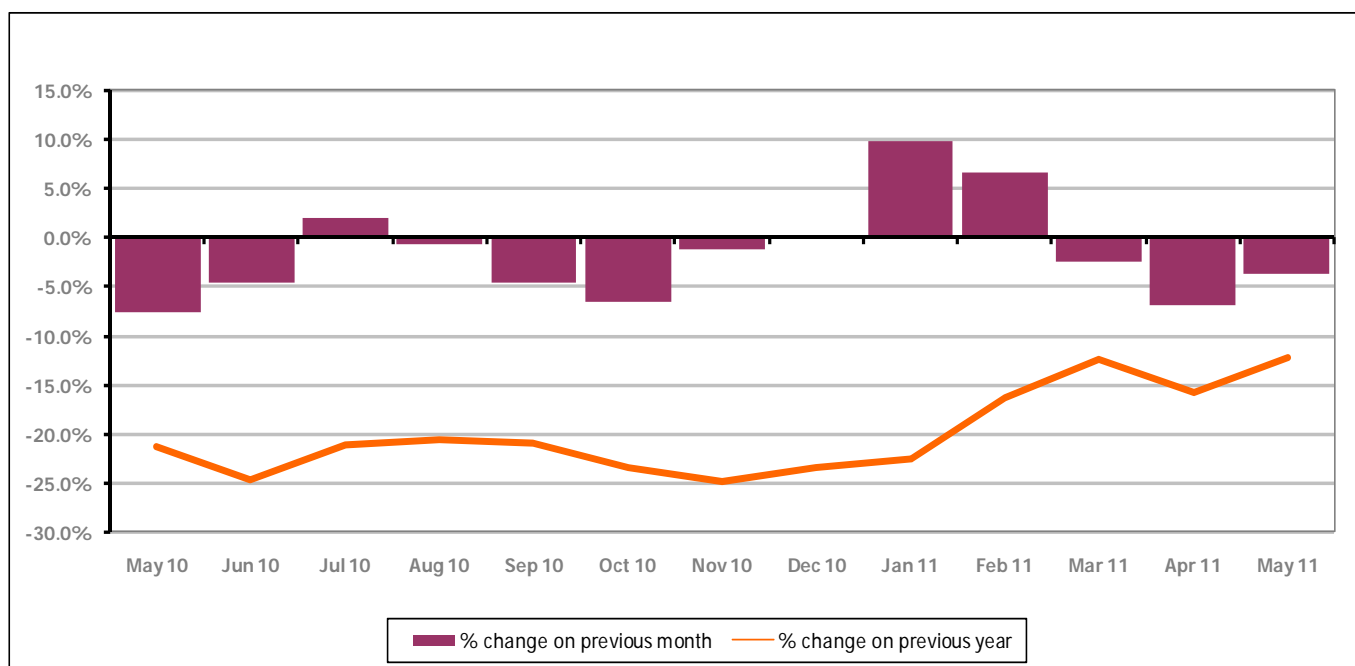


Figure 11 shows the claimant count decreased by -3.6% since April 2011. The change on the previous year decreased between April and May 2011 to -12.3%.

PART 4: LOCAL AUTHORITY DISTRICT AND WARD ANALYSIS

4.3 Forest of Dean District continued...

Figure 12: Claimant rates across Forest of Dean District wards - May 2011

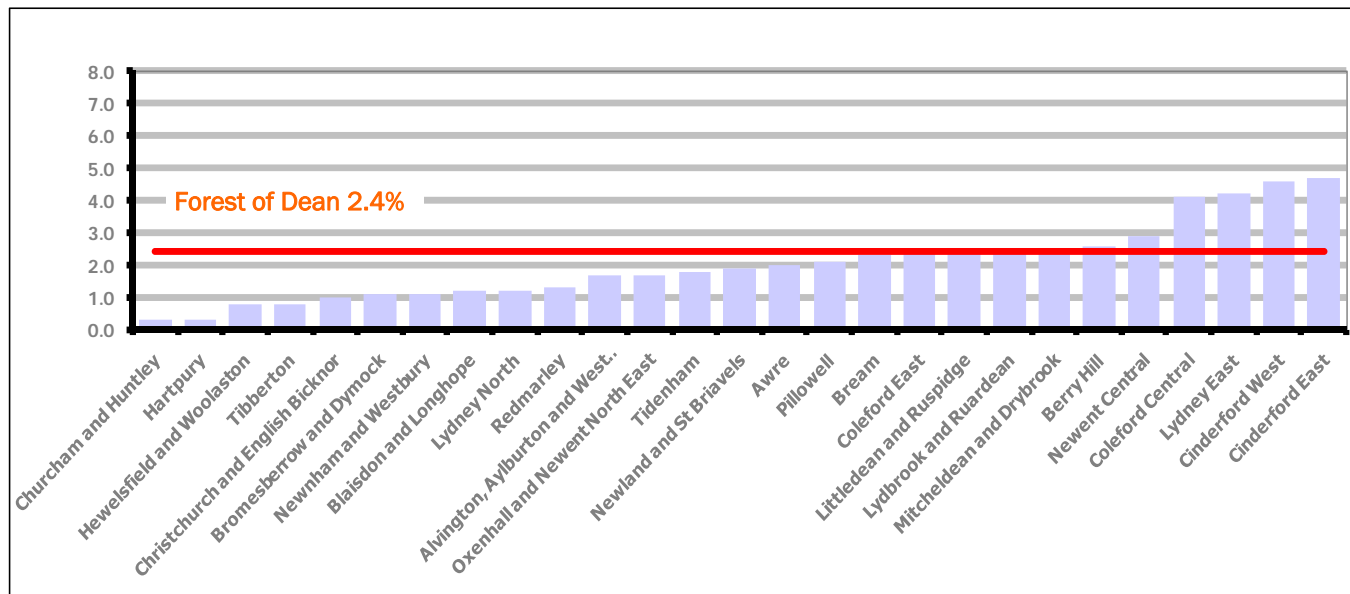


Figure 12 shows the claimant rates for Forest of Dean District wards. The red line represents the average claimant rate across the District of 2.4 %. Nine wards lie above the average.

Table 7: Analysis of Claimant Count at Forest of Dean District ward level - May 2011

District	Ward	Rate	Rank*
Forest	Churcham and Huntley	0.3	1
Forest	Hartpur	0.3	1
Forest	Hewelsfield and Woolaston	0.8	10
Forest	Tibberton	0.8	10
Forest	Christchurch and English Bicknor	1.0	29
Forest	Bromesberrow and Dymock	1.1	36
Forest	Newnham and Westbury	1.1	36
Forest	Blaisdon and Longhope	1.2	40
Forest	Lydney North	1.2	40
Forest	Redmarley	1.3	48
Forest	Alvington, Aylburton and West Lydney	1.7	76
Forest	Oxenhall and Newent North East	1.7	76
Forest	Tidenham	1.8	82
Forest	Newland and St Briavels	1.9	87
Forest	Awre	2.0	88
Forest	Pillowell	2.1	91
Forest	Bream	2.3	98
Forest	Coleford East	2.4	99
Forest	Littledean and Ruspidge	2.5	103
Forest	Lydbrook and Ruardean	2.5	103
Forest	Mitcheldean and Drybrook	2.5	103
Forest	Berry Hill	2.6	107
Forest	Newent Central	2.9	112
Forest	Coleford Central	4.1	126
Forest	Lydney East	4.2	127
Forest	Cinderford West	4.6	132
Forest	Cinderford East	4.7	133

	bottom 10% of county
	first quartile of county
	second quartile of county
	third quartile of county
	fourth quartile of county
	highest 10% of county

* 1 = "best" and 142 = "worst"

Table 7 shows overall claimant rates for the Forest of Dean District wards and their position relative to all wards in Gloucestershire.

PART 4: LOCAL AUTHORITY DISTRICT AND WARD ANALYSIS

4.4 Gloucester City

Claimant Rate and Claimant Count

Figure 13: Gloucester City claimant rate over the last year

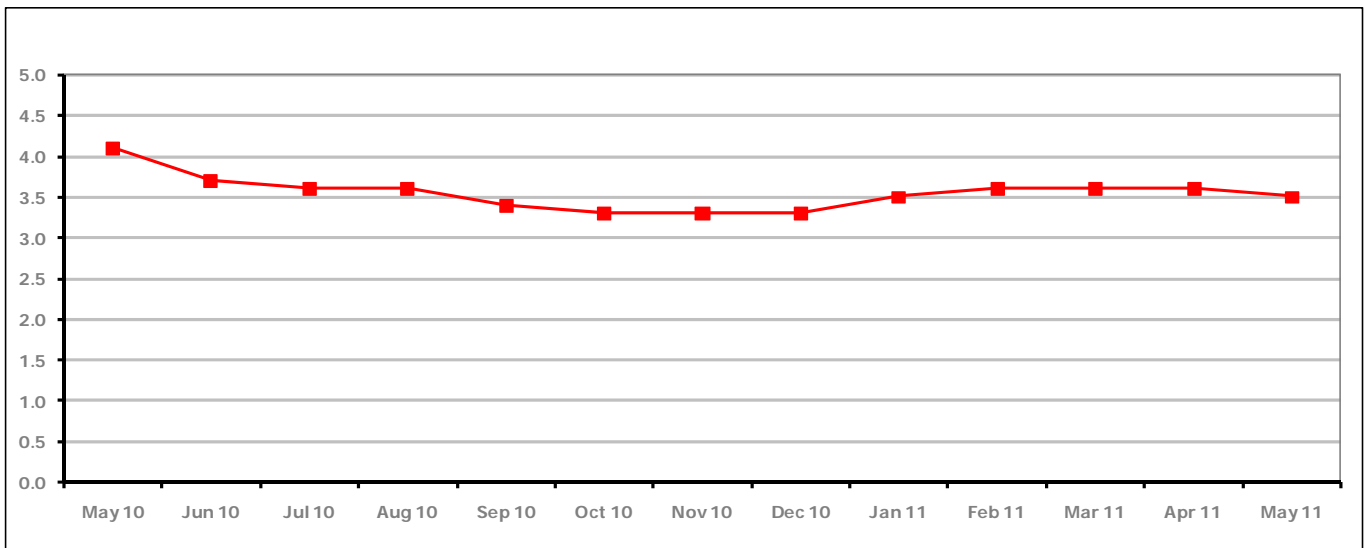


Figure 13 shows the claimant rate for Gloucester City decreased in May 2011 to 3.5%.

Figure 14: Gloucester City claimants - Month on Month and Year on Year change

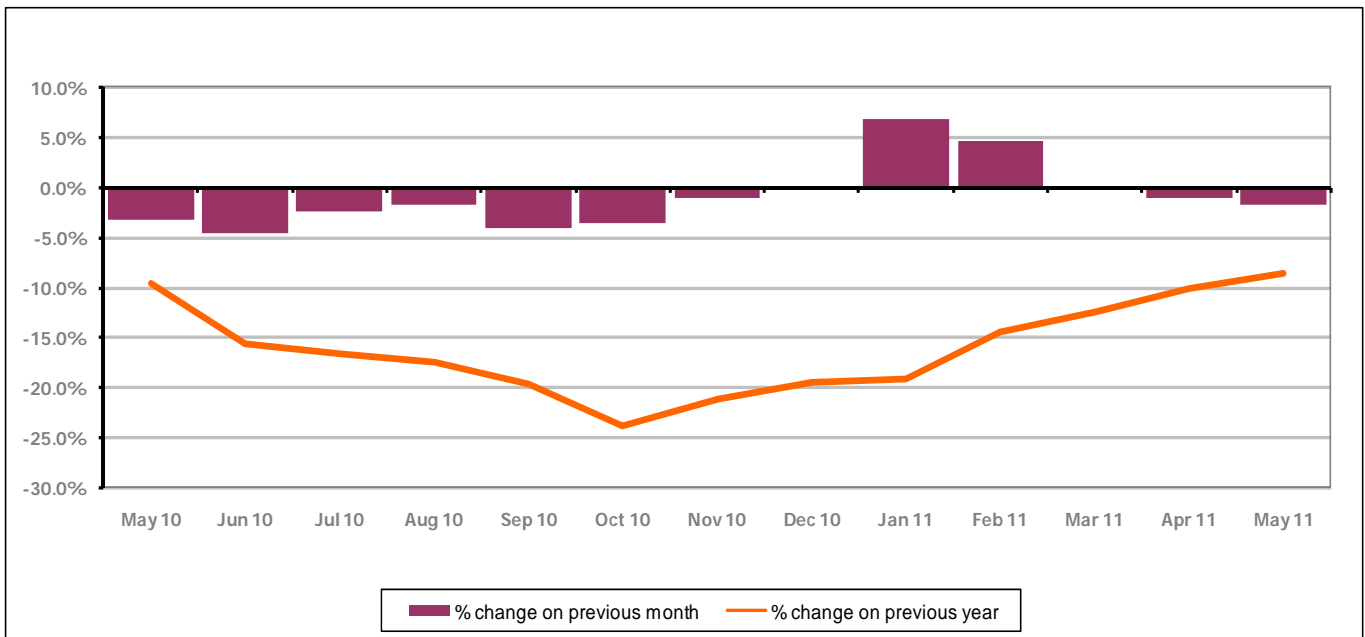


Figure 14 shows the monthly claimant count decreased by -1.7% since April 2011. The change on the previous year has increased between April 2011 and May 2011 to -8.7%.

PART 4: LOCAL AUTHORITY DISTRICT AND WARD ANALYSIS

4.4 Gloucester City continued...

Figure 15: Claimant rates across Gloucester City wards - May 2011

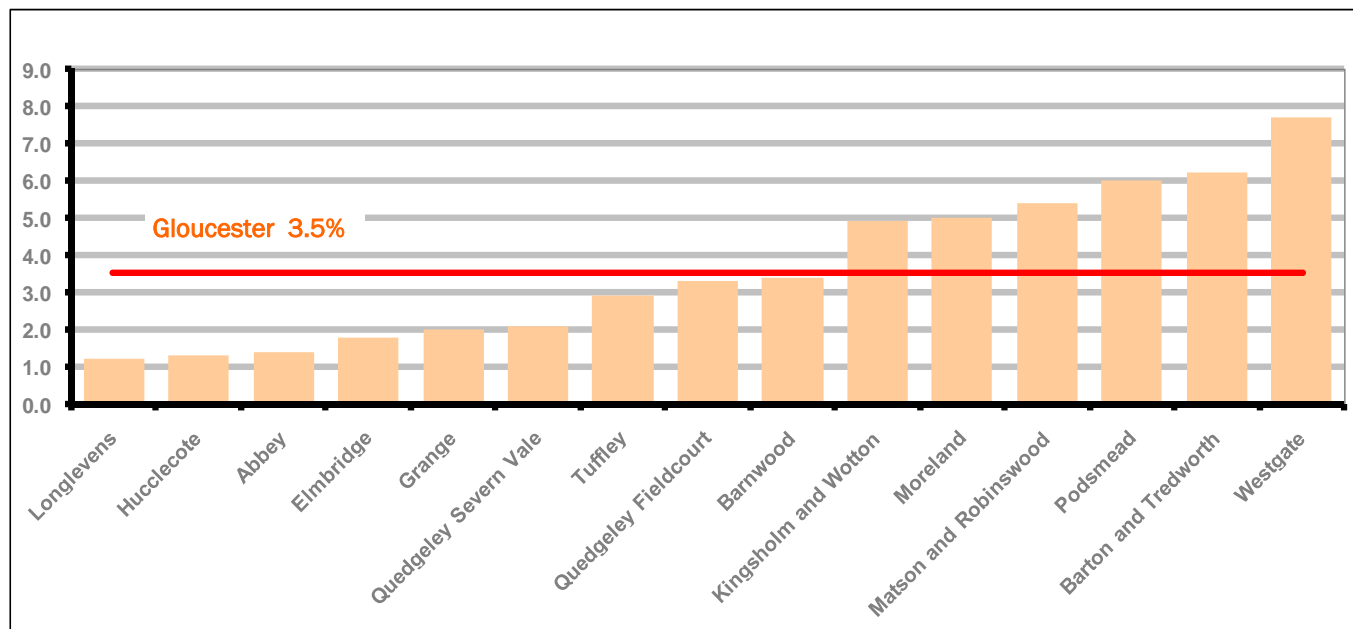
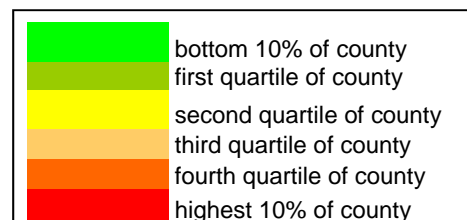


Figure 15 shows the claimant rates for Gloucester City district wards. The red line represents the average claimant rate across the City of 3.5%. Six wards lie above the average.

Table 8: Analysis of Claimant Count at Gloucester City ward level - May 2011

District	Ward	Rate	Rank*
Gloucester	Longlevens	1.2	40
Gloucester	Hucclecote	1.3	48
Gloucester	Abbey	1.4	56
Gloucester	Elmbridge	1.8	82
Gloucester	Grange	2.0	88
Gloucester	Quedgeley Severn Vale	2.1	91
Gloucester	Tuffley	2.9	112
Gloucester	Quedgeley Fieldcourt	3.3	119
Gloucester	Barnwood	3.4	121
Gloucester	Kingsholm and Wotton	4.9	134
Gloucester	Moreland	5.0	136
Gloucester	Matson and Robinswood	5.4	137
Gloucester	Podsmead	6.0	140
Gloucester	Barton and Tredworth	6.2	141
Gloucester	Westgate	7.7	142



* 1 = "best" and 142 = "worst"

Table 8 shows overall claimant rates for Gloucester City wards and their position relative to all wards in Gloucestershire.

PART 4: LOCAL AUTHORITY DISTRICT AND WARD ANALYSIS

4.5 Stroud District

Claimant Rate and Claimant Count

Figure 16: Stroud District claimant rate over the last year

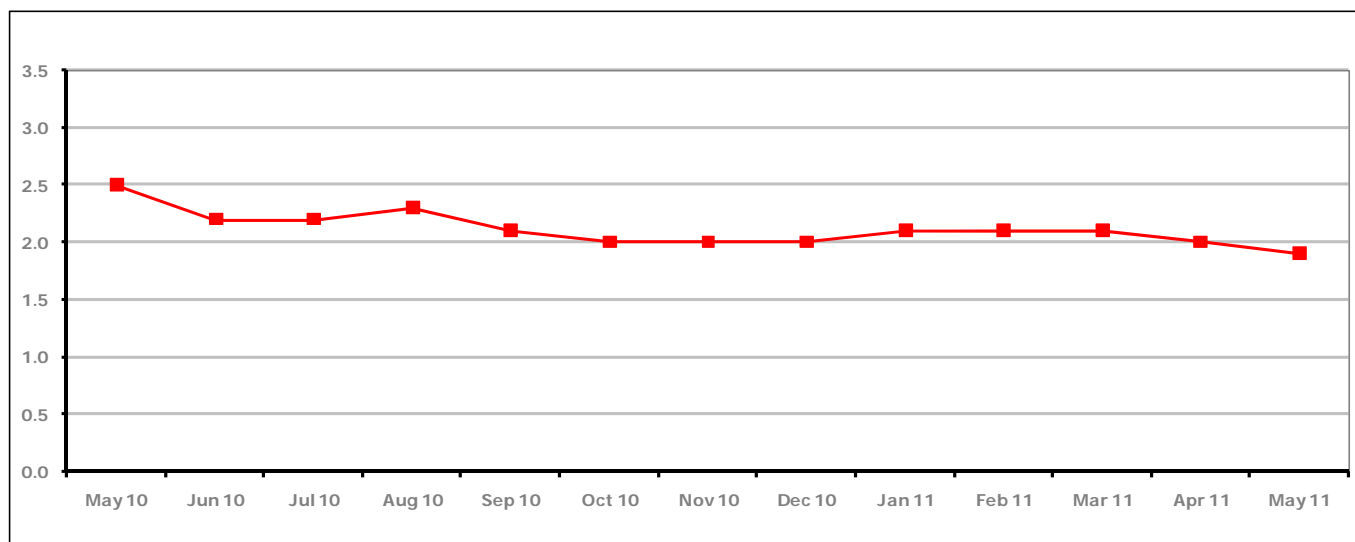


Figure 16 shows the claimant rate for Stroud District declined in May 2011 to 1.9%.

Figure 17: Stroud District claimants - Month on Month and Year on Year change

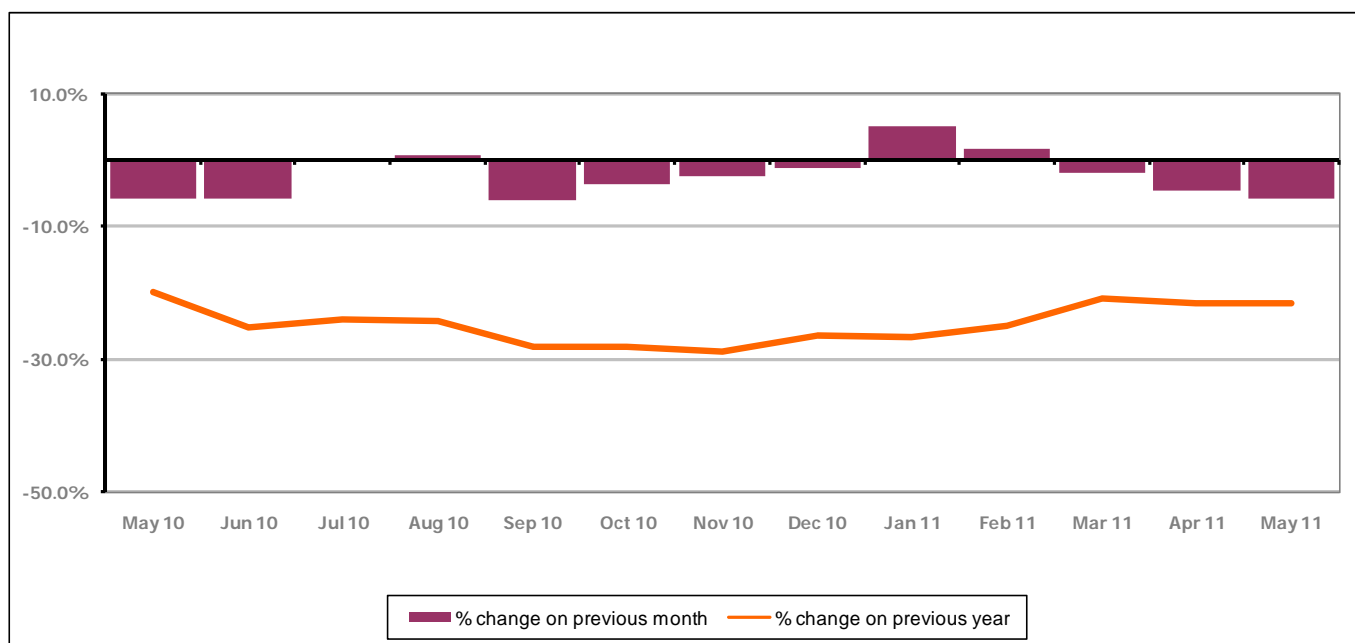


Figure 17 shows the monthly claimant count decreased by -5.7% since April 2011. The change on the previous year has increased slightly between April 2011 and May 2011 to -21.6%.

PART 4: LOCAL AUTHORITY AND DISTRICT ANALYSIS

4.5 Stroud District continued...

Figure 18: Claimant rates across Stroud District wards - May 2011

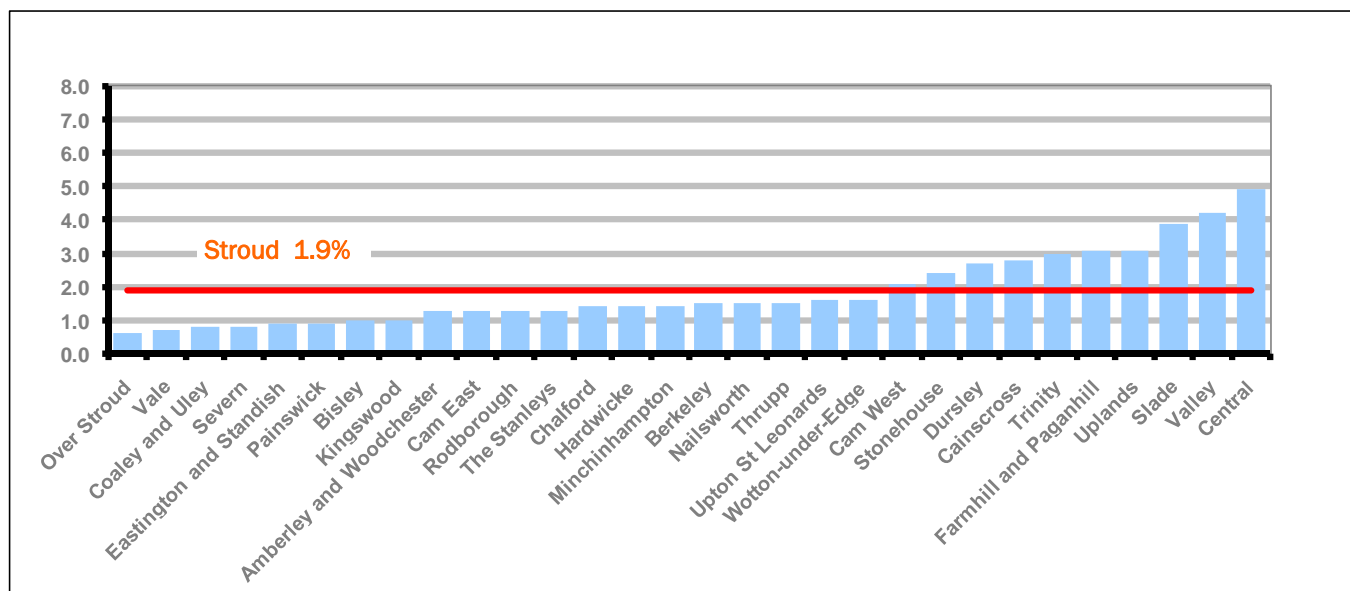
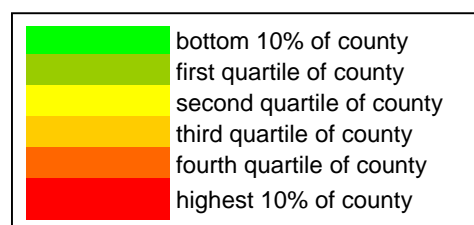


Figure 18 shows the claimant rates in Stroud District wards. The red line represents the average claimant rate across the District of 1.9%. Ten wards are above the average.

Table 9: Analysis of Claimant Count at Stroud District ward level - May 2011

District	Ward	Rate	Rank*
Stroud	Over Stroud	0.6	6
Stroud	Vale	0.7	7
Stroud	Coaley and Uley	0.8	10
Stroud	Severn	0.8	10
Stroud	Eastington and Standish	0.9	19
Stroud	Painswick	0.9	19
Stroud	Bisley	1.0	29
Stroud	Kingswood	1.0	29
Stroud	Amberley and Woodchester	1.3	48
Stroud	Cam East	1.3	48
Stroud	Rodborough	1.3	48
Stroud	The Stanleys	1.3	48
Stroud	Chalford	1.4	56
Stroud	Hardwicke	1.4	56
Stroud	Minchinhampton	1.4	56
Stroud	Berkeley	1.5	63
Stroud	Nailsworth	1.5	63
Stroud	Thrupp	1.5	63
Stroud	Upton St Leonards	1.6	72
Stroud	Wotton-under-Edge	1.6	72
Stroud	Cam West	2.1	91
Stroud	Stonehouse	2.4	99
Stroud	Dursley	2.7	108
Stroud	Cainscross	2.8	110
Stroud	Trinity	3.0	115
Stroud	Farmhill and Paganhill	3.1	117
Stroud	Uplands	3.1	117
Stroud	Slade	3.9	123
Stroud	Valley	4.2	127
Stroud	Central	4.9	134



* 1 = "best" and 142 = "worst"

Table 9 shows overall claimant rates for Stroud District wards and their position relative to all wards in Gloucestershire.

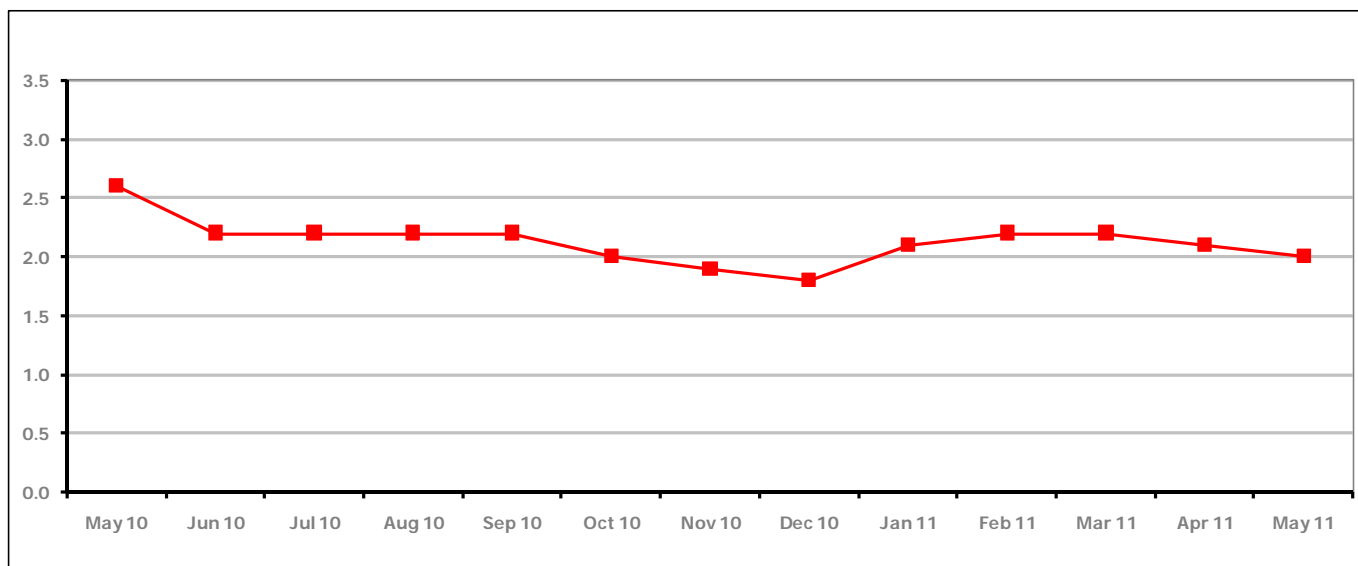
PART 4: LOCAL AUTHORITY DISTRICT AND WARD ANALYSIS**4.6 Tewkesbury District****Claimant Rate and Claimant Count***Figure 19: Tewkesbury District claimant rate over the last year*

Figure 19 shows the claimant rate for Tewkesbury District declined in May 2011 to 2.0%.

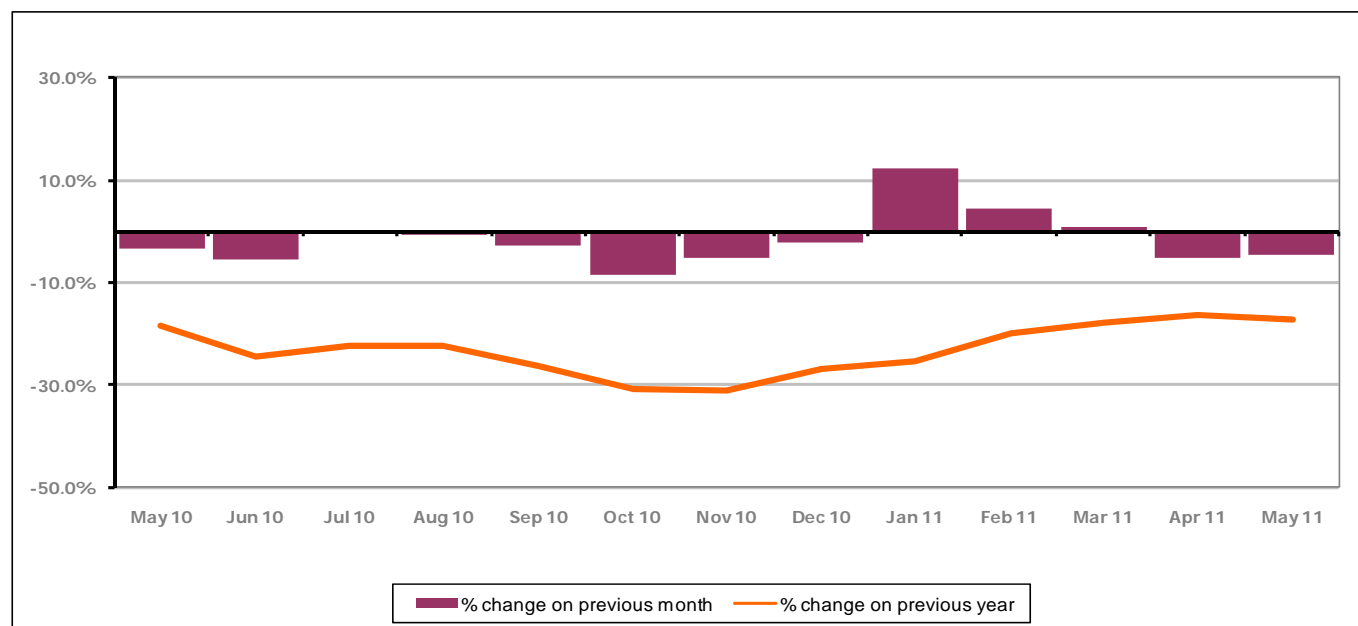
Figure 20: Tewkesbury District claimants - Month on Month and Year on Year change

Figure 20 shows that the monthly claimant count increased in May 2011 by -4.5%. The change on the previous year decreased between May 2011 and April 2011 to -17.4%.

PART 4: LOCAL AUTHORITY AND DISTRICT ANALYSIS

4.6 Tewkesbury District continued...

Figure 21: Claimant rates across Tewkesbury District wards - May 2011

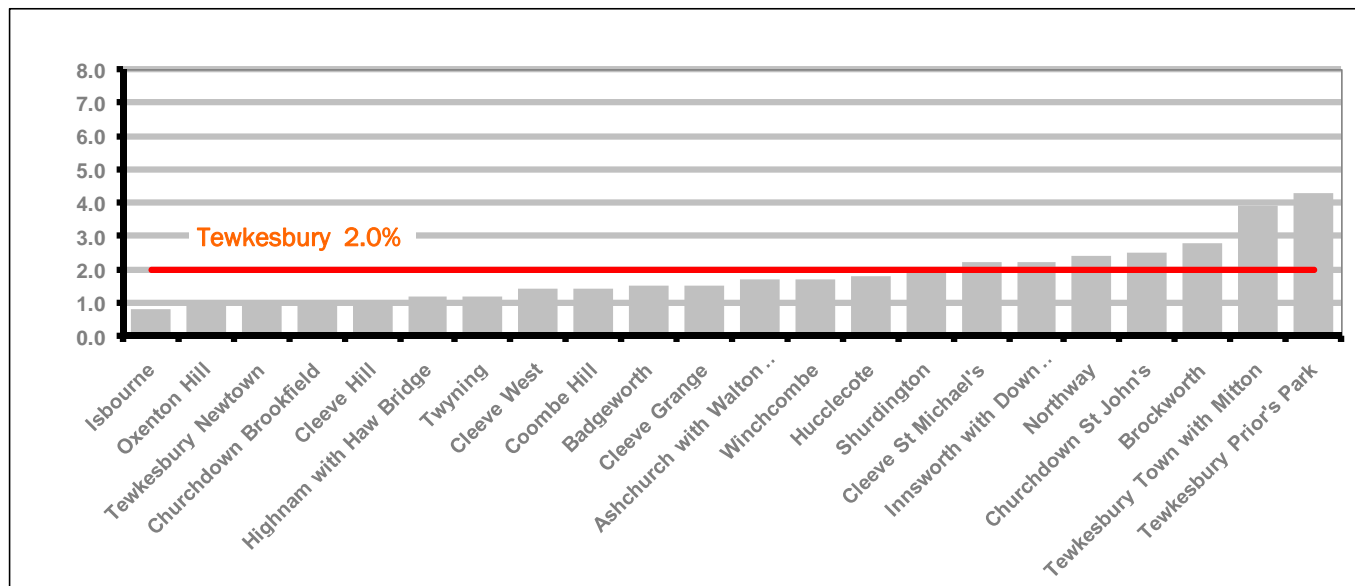
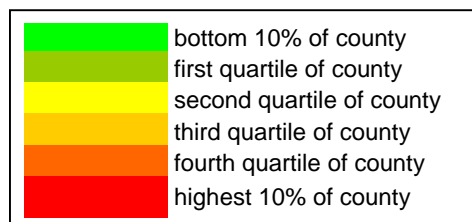


Figure 21 shows the claimant rates in Tewkesbury District wards. The red line represents the average claimant rate across the District of 2.0% and seven wards are above the average.

Table 10: Analysis of Claimant Count at Tewkesbury District level - May 2011

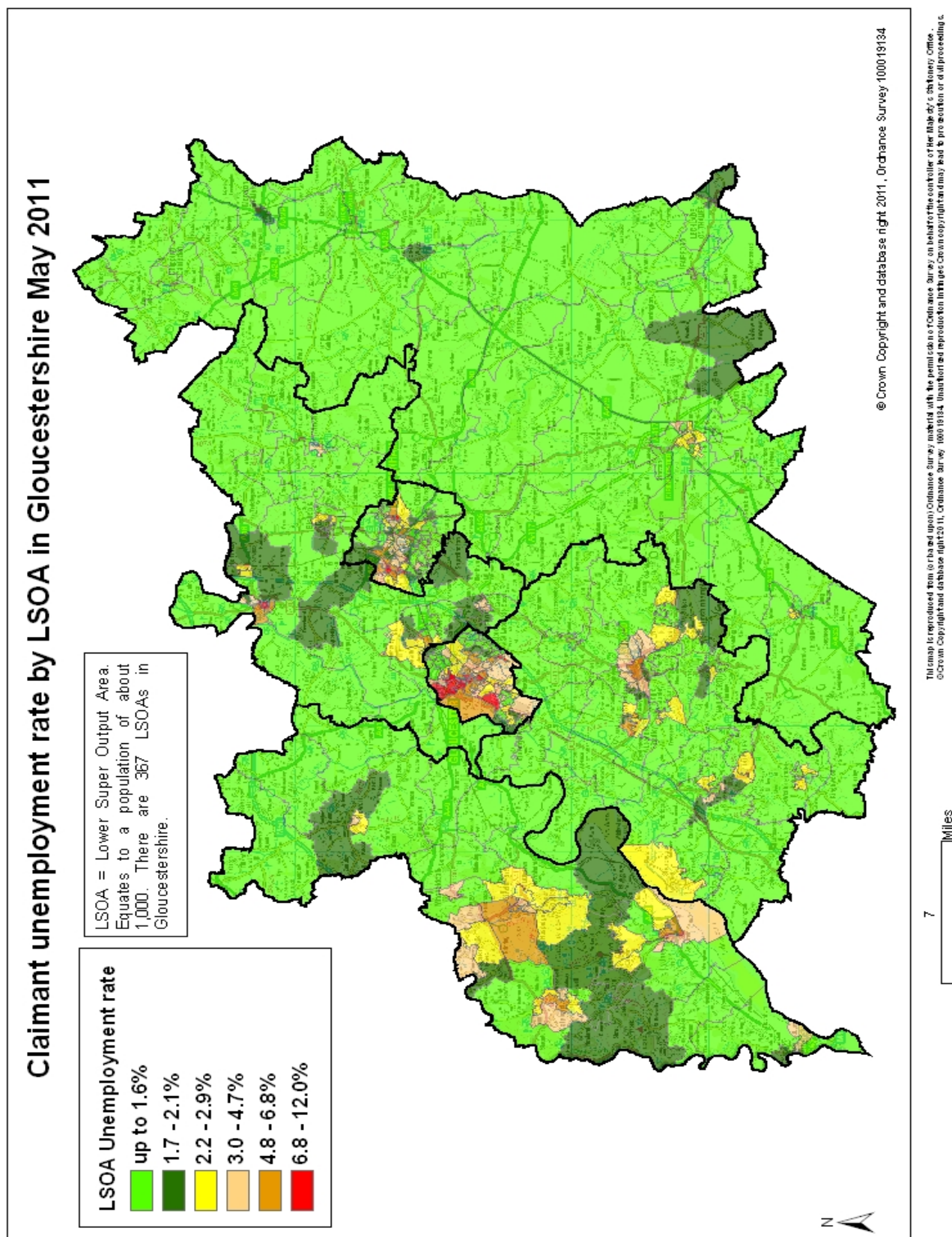
District	Ward	Rate	Rank*
Tewkesbury	Isbourne	0.8	10
Tewkesbury	Oxenton Hill	0.9	19
Tewkesbury	Tewkesbury Newtown	0.9	19
Tewkesbury	Churchdown Brookfield	1.0	29
Tewkesbury	Cleeve Hill	1.0	29
Tewkesbury	Highnam with Haw Bridge	1.2	40
Tewkesbury	Twynning	1.2	40
Tewkesbury	Cleeve West	1.4	56
Tewkesbury	Coombe Hill	1.4	56
Tewkesbury	Badgeworth	1.5	63
Tewkesbury	Cleeve Grange	1.5	63
Tewkesbury	Ashchurch with Walton Cardiff	1.7	76
Tewkesbury	Winchcombe	1.7	76
Tewkesbury	Hucclecote	1.8	82
Tewkesbury	Shurdington	2.0	88
Tewkesbury	Cleeve St Michael's	2.2	95
Tewkesbury	Innsworth with Down Hatherley	2.2	95
Tewkesbury	Northway	2.4	99
Tewkesbury	Churchdown St John's	2.5	103
Tewkesbury	Brockworth	2.8	110
Tewkesbury	Tewkesbury Town with Mitton	3.9	123
Tewkesbury	Tewkesbury Prior's Park	4.3	129



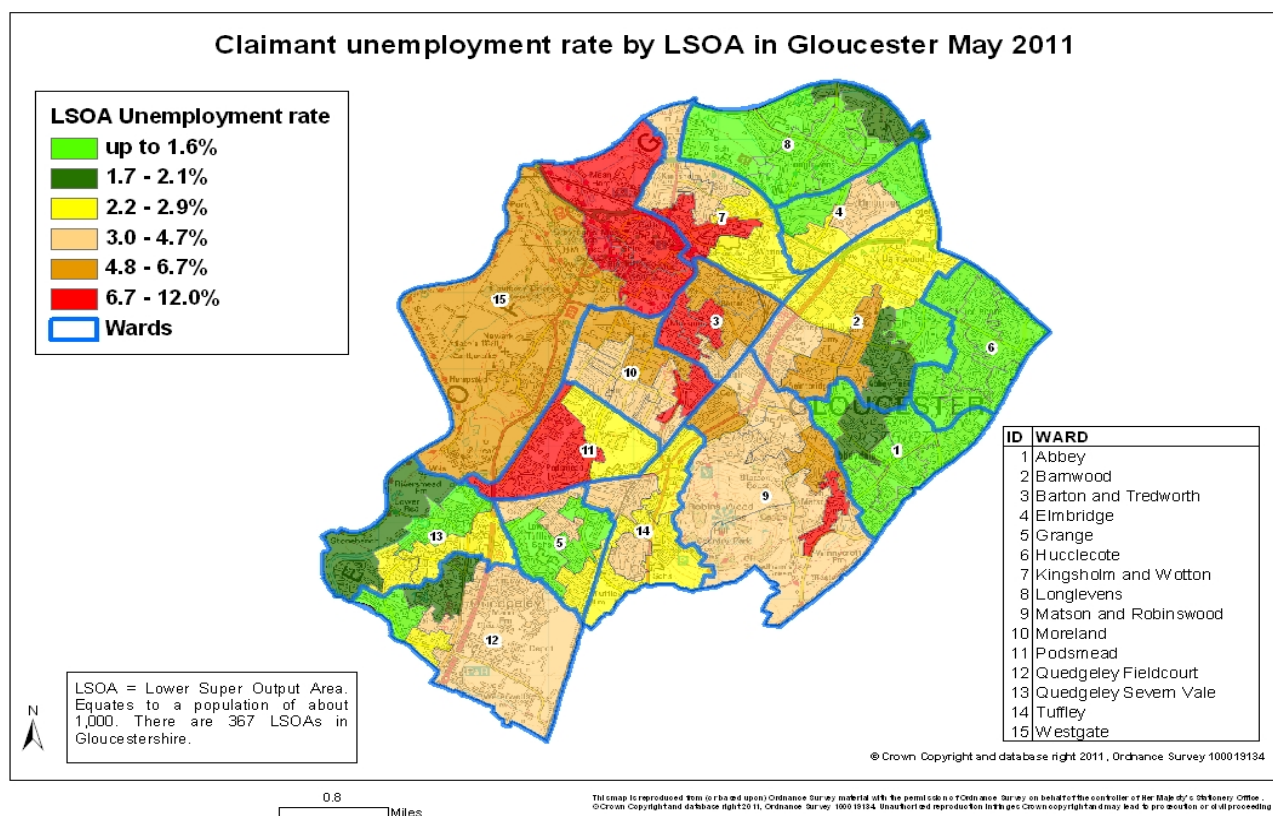
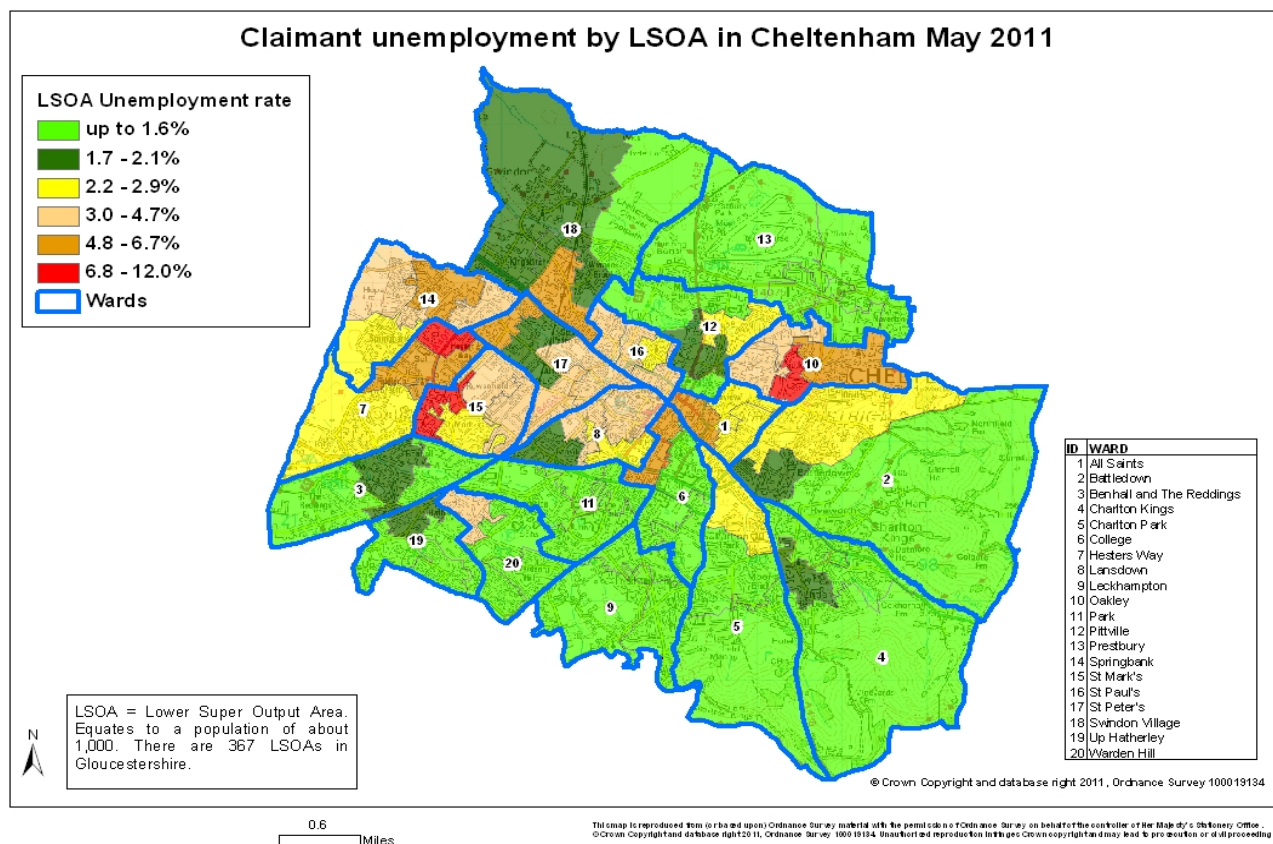
* 1 = "best" and 142 = "worst"

Table 10 shows overall claimant rates for Tewkesbury District wards and their position relative to all wards in Gloucestershire.

PART 5: MAP SHOWING DISTRIBUTION OF CLAIMANT RATE ACROSS GLOUCESTERSHIRE



PART 5: MAP SHOWING DISTRIBUTION OF CLAIMANT RATE ACROSS GLOUCESTERSHIRE



PART 6: YOUNG PEOPLE NOT IN EDUCATION, EMPLOYMENT OR TRAINING (NEET) IN GLOUCESTERSHIRE

Data provided by Prospects, the Connexions service in Gloucestershire on the situation of young people (16-18) in Gloucestershire who are not in education, employment or formal training.

Connexions Gloucestershire is required to report performance with the 16-18 age range against nationally defined criteria for counting the NEET group. The NEET group includes young people actively seeking education, employment or training as well as those young people who are either not yet ready or who are unable to access these opportunities because of their personal circumstances. The figures quoted below include young people in both of these categories.

Summary

As at the end of May 2011 there were 586 young people aged 16-18 not in education, employment or training in Gloucestershire and this figure translates into an adjusted (*) 16-18 NEET population of 4.2%. The total number of NEET decreased by 3 young people in May 2011 compared to April 2011. 4 districts saw a decrease in their NEET figure and 2 saw an increase.

Total NEET Group by District Area May 2011

	Cheltenham	Cotswold	Forest	Gloucester	Stroud	Tewkesbury	Total
Number of NEET	138	33	65	195	91	64	586
Cohort	2434	1938	2179	4234	2432	1794	15011
% NEET	5.7%	1.7%	3.0%	4.6%	3.7%	3.6%	4.2%

If you would like to receive any further information on Gloucestershire's NEET strategy then please contact Ruth.Critchlow@gloucestershire.gov.uk or telephone 01452 551267.

(*) Adjustment includes a proportion of young people aged 16-18 whose outcomes are not-known to Connexions Gloucestershire