

Percentage of population aged 16+ who were in employment at Lower Super Output Area Level, 2021

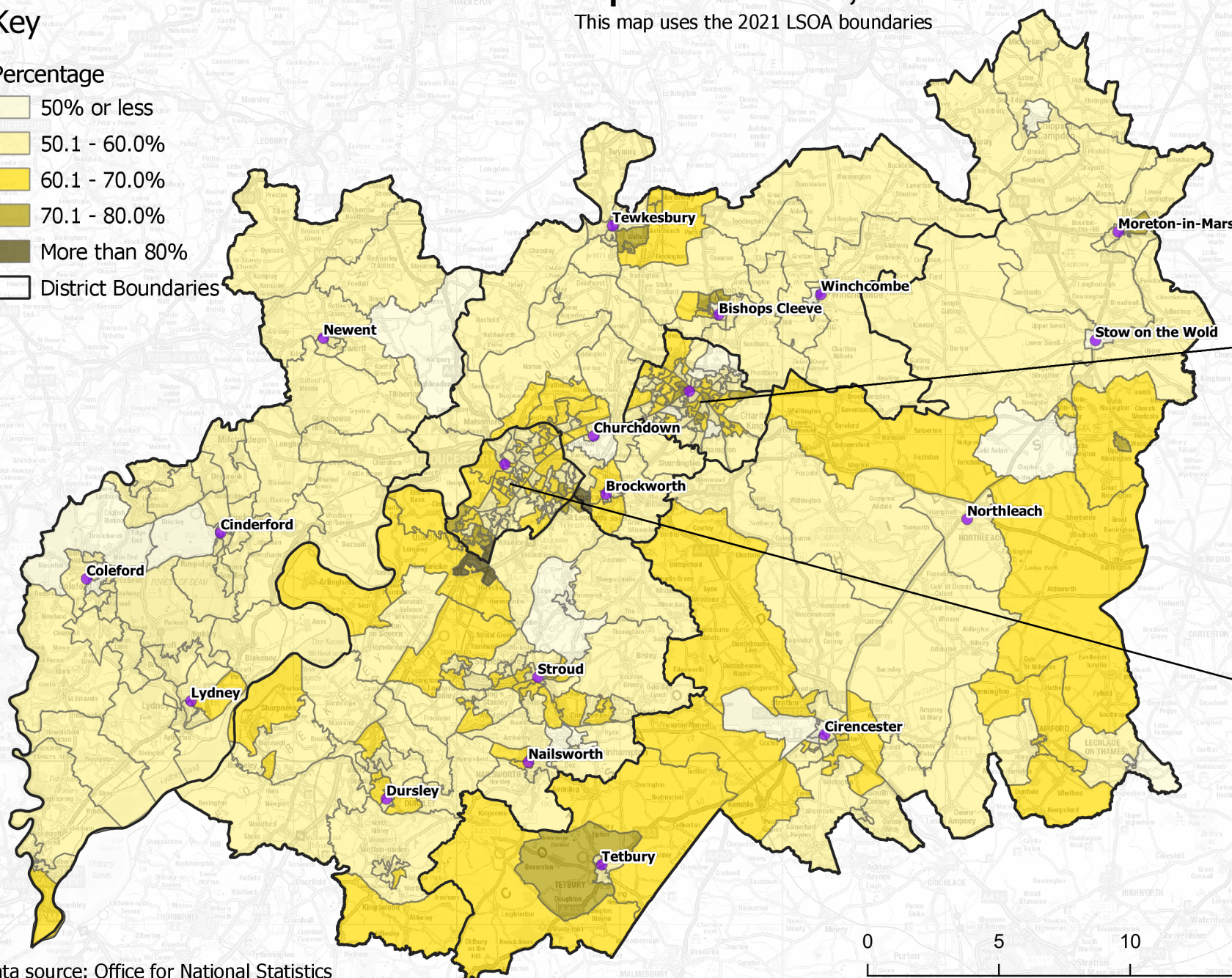
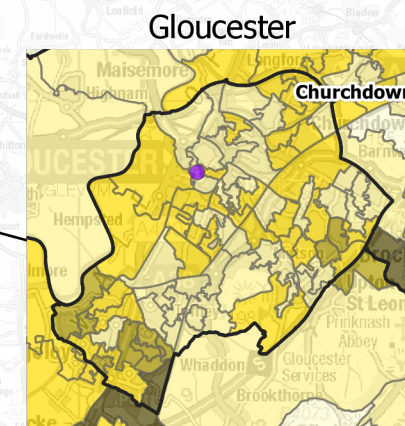
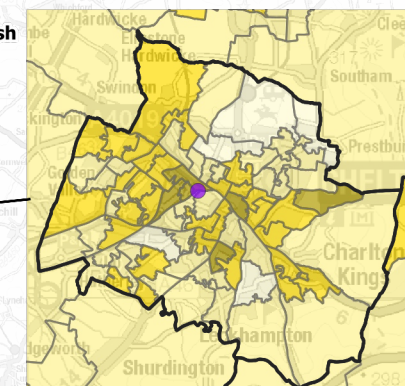
Key

Percentage

- 50% or less
- 50.1 - 60.0%
- 60.1 - 70.0%
- 70.1 - 80.0%
- More than 80%
- District Boundaries

This map uses the 2021 LSOA boundaries

This includes full time students who were also in employment
Cheltenham



Data source: Office for National Statistics

