

2021 Census

Detailed Results - Tewkesbury

Data and Analysis Team – Gloucestershire County Council

Living our values every day



Accountable



Integrity



Empower



Respect





Excellence



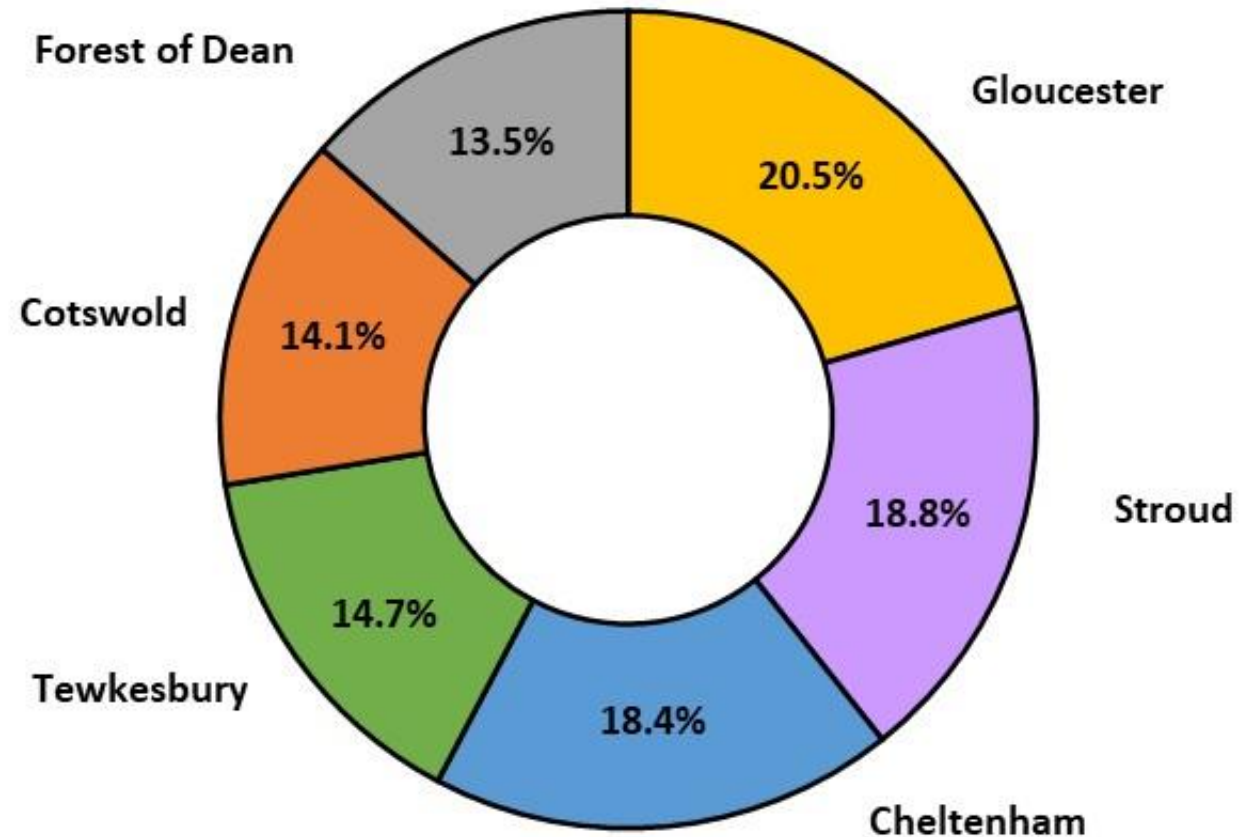
Total population - 2021

 **94,884**
people

 **48.6%** male

 **51.4%** female

Population Distribution of Gloucestershire, 2021



Population change

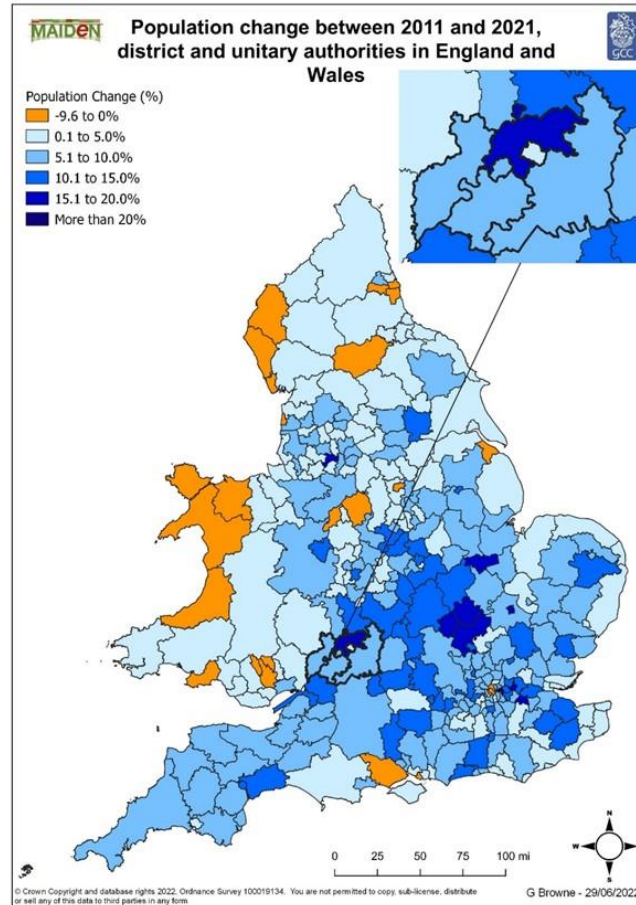
15.8% increase



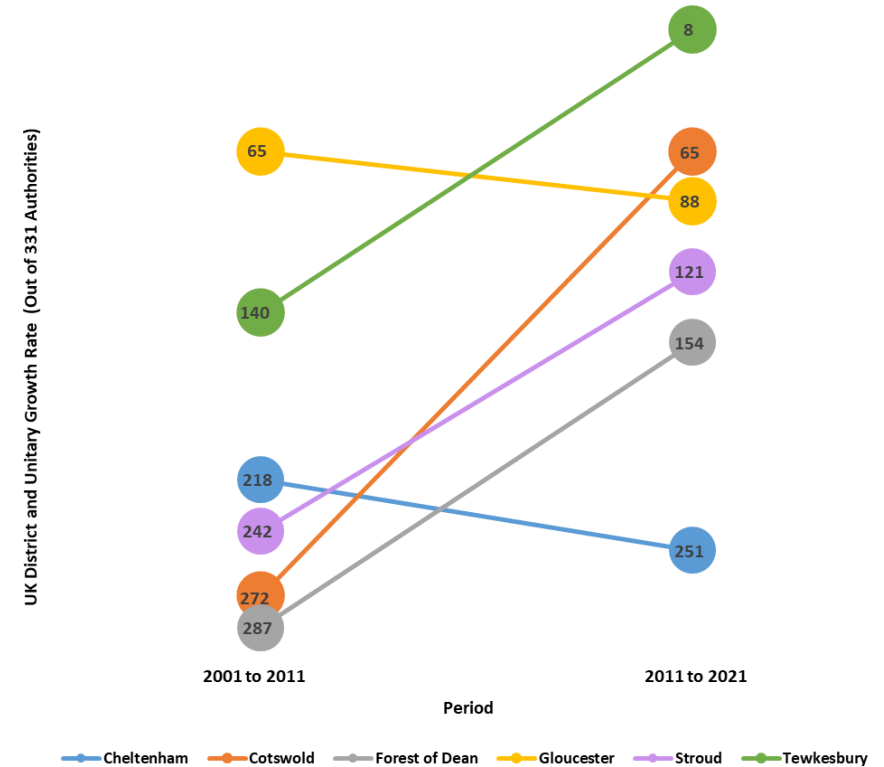
12,941 Additional people living in Tewkesbury

Highest population growth out of Gloucestershire's six districts

8th highest population growth nationally (out of 331 districts)



Rank for Population Growth Out of the 331 District and Unitary Authorities in England and Wales, 2001 to 2011 and 2011 to 2021



Population change

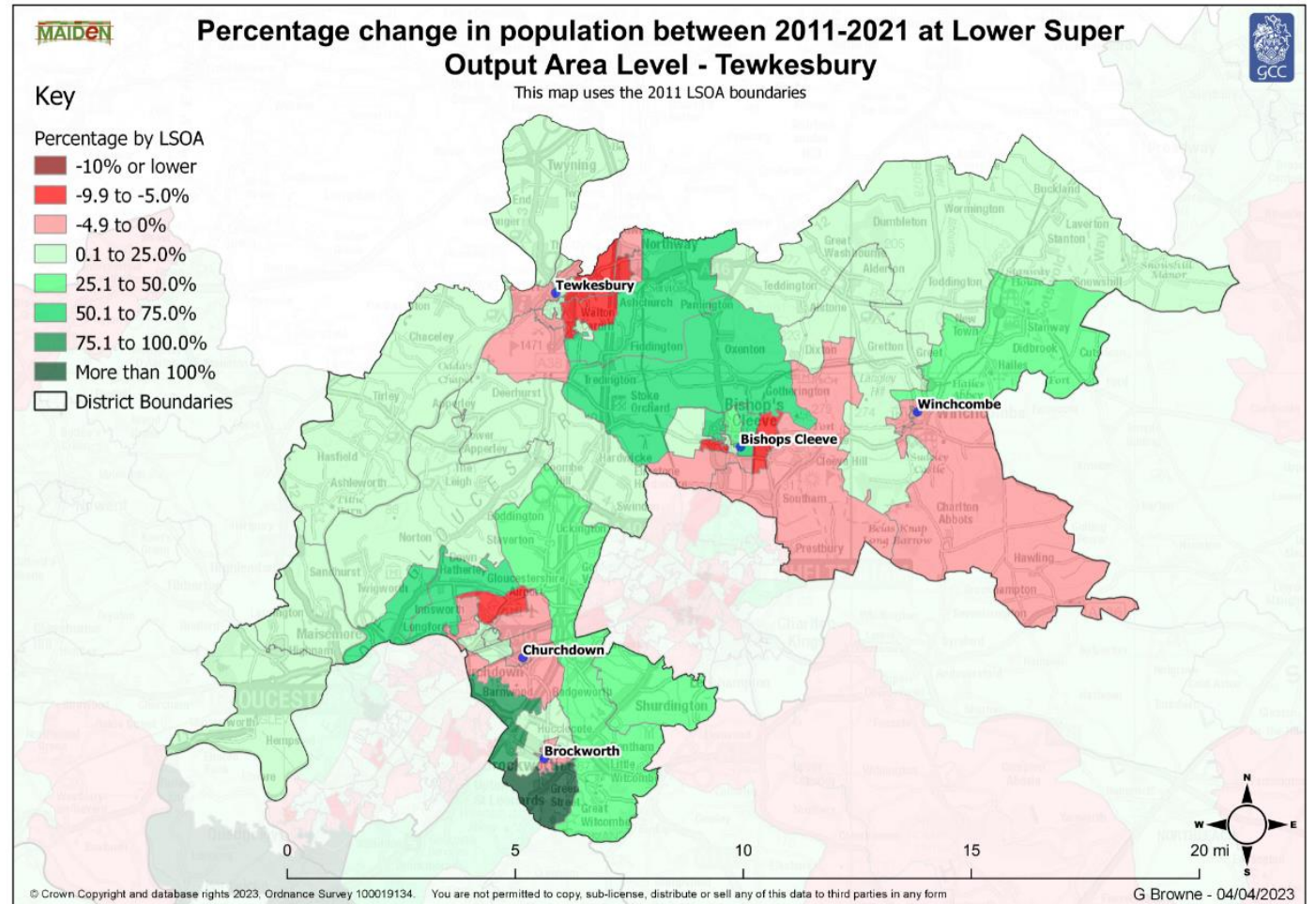
42% of LSOAs saw declining populations



8 LSOAs (16.0%) saw growth of greater than 50%



The greatest growth was in Brockworth



Who lives in Tewkesbury?

Living our values every day



Accountable



Integrity



Empower



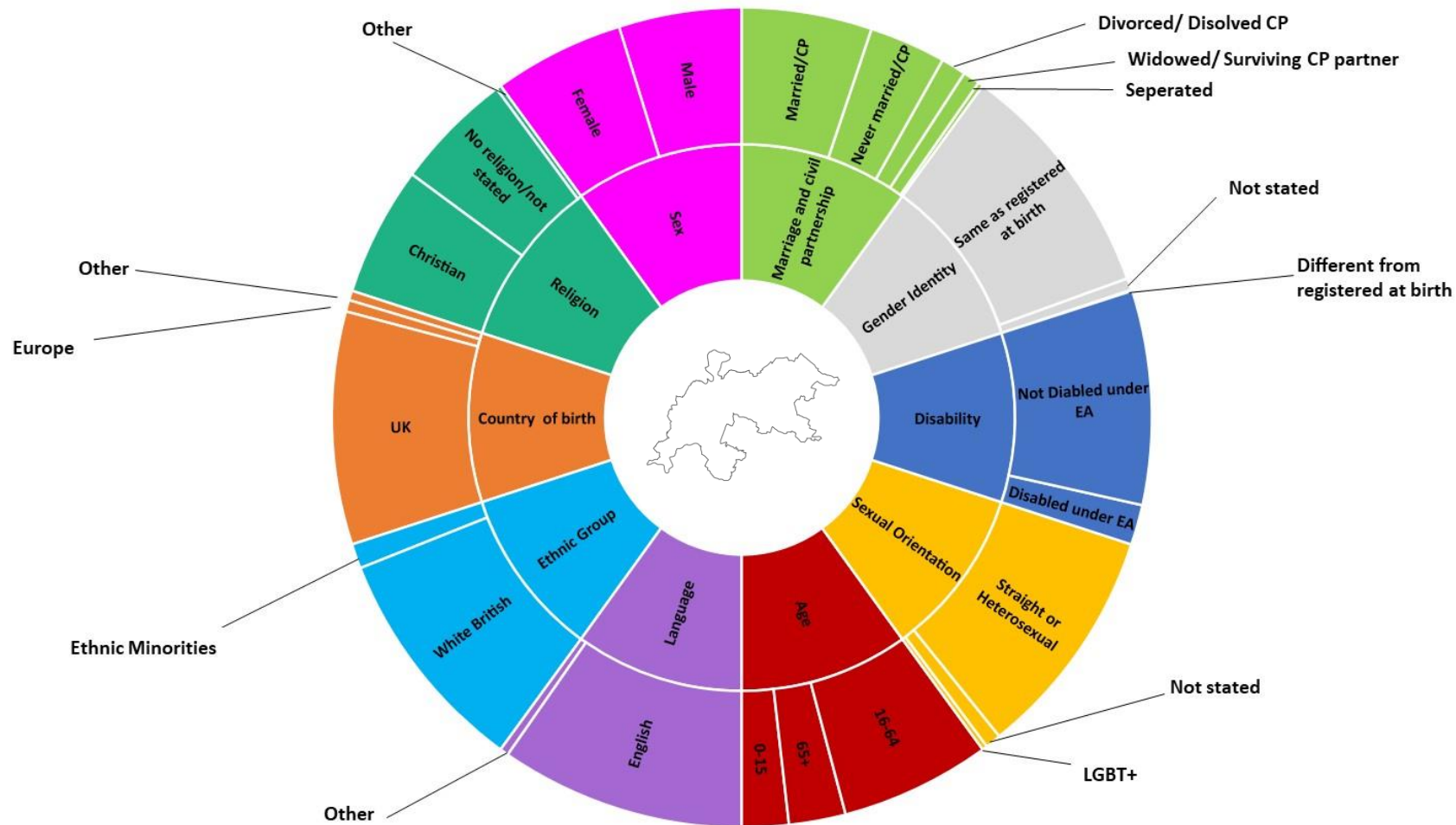
Respect



Excellence



Tewkesbury as 100 people



N.B each coloured segment represents 100 people
CP stands for Civil Partnership

Broad age groups



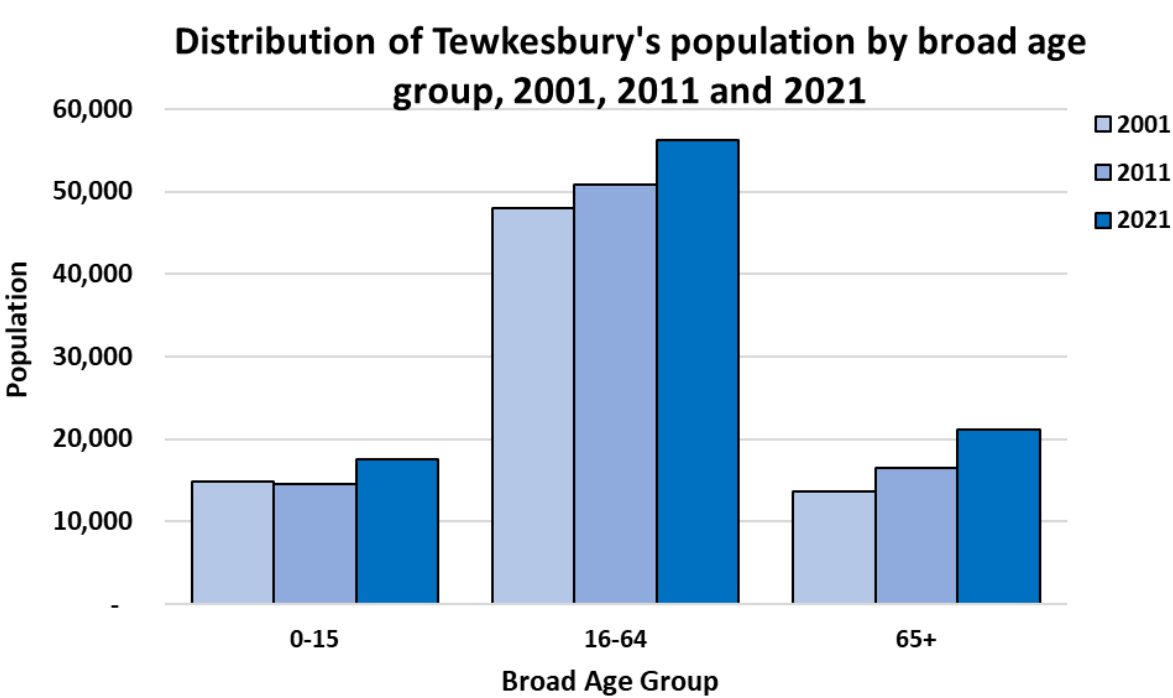
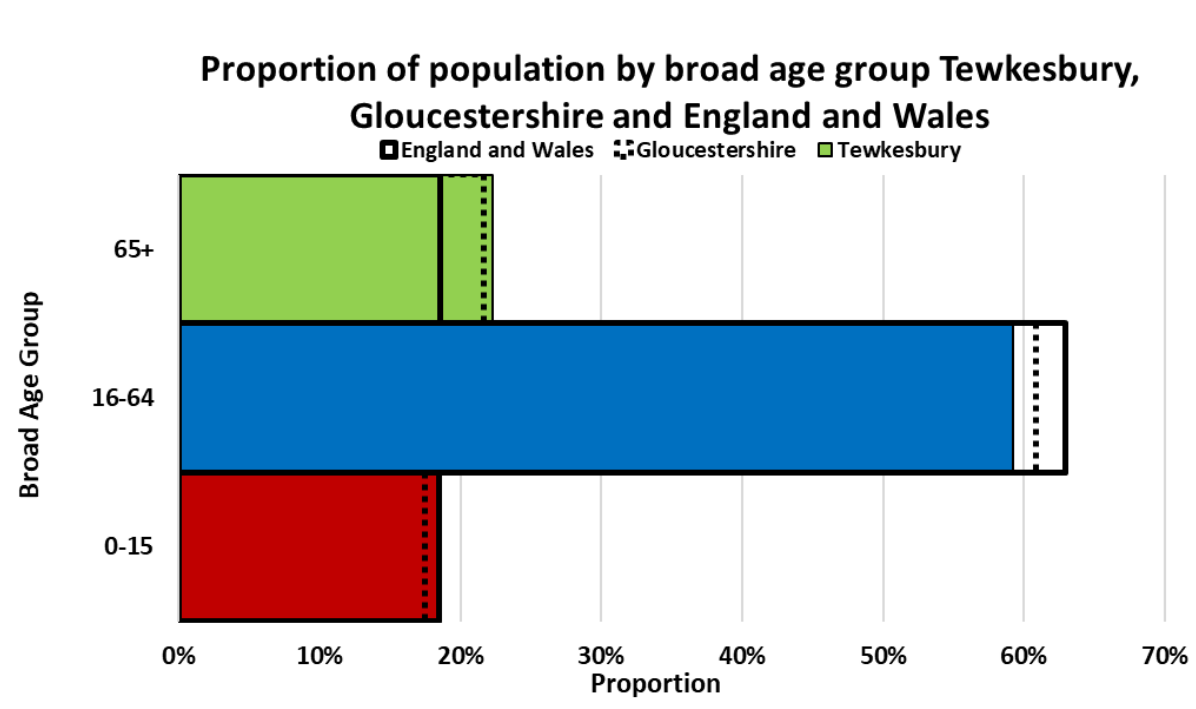
2nd highest % of 0-15
year olds (out of
Gloucestershire's 6 districts)



4th highest % of 16-64
year olds (out of
Gloucestershire's 6 districts)



4th highest % of 65+
year olds (out of
Gloucestershire's 6 districts)

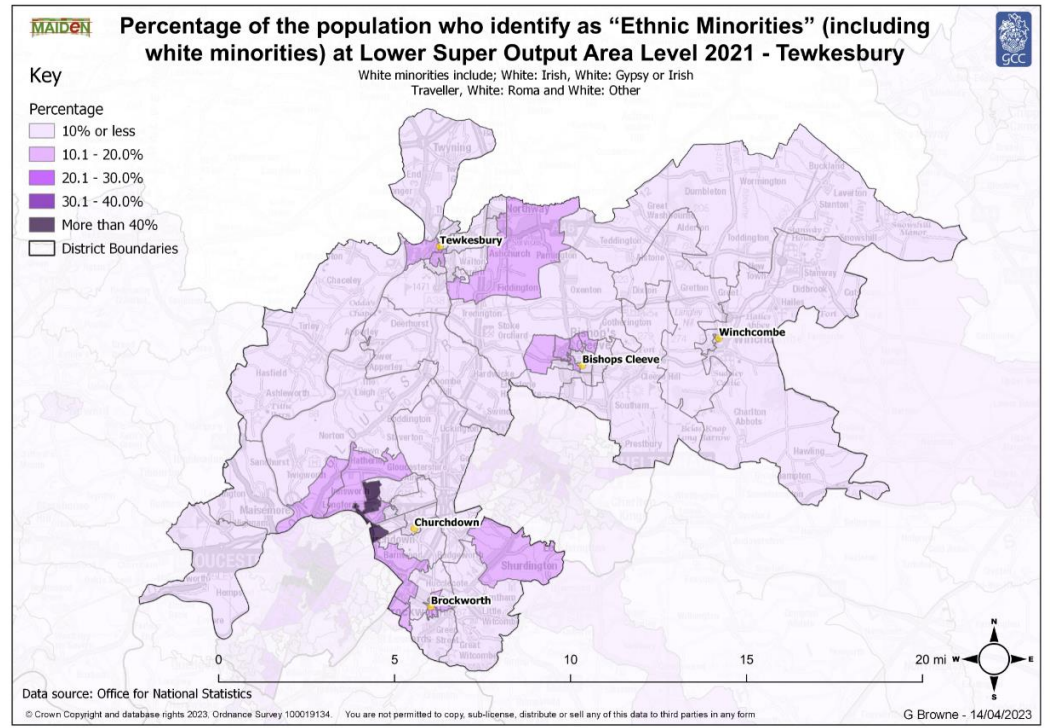
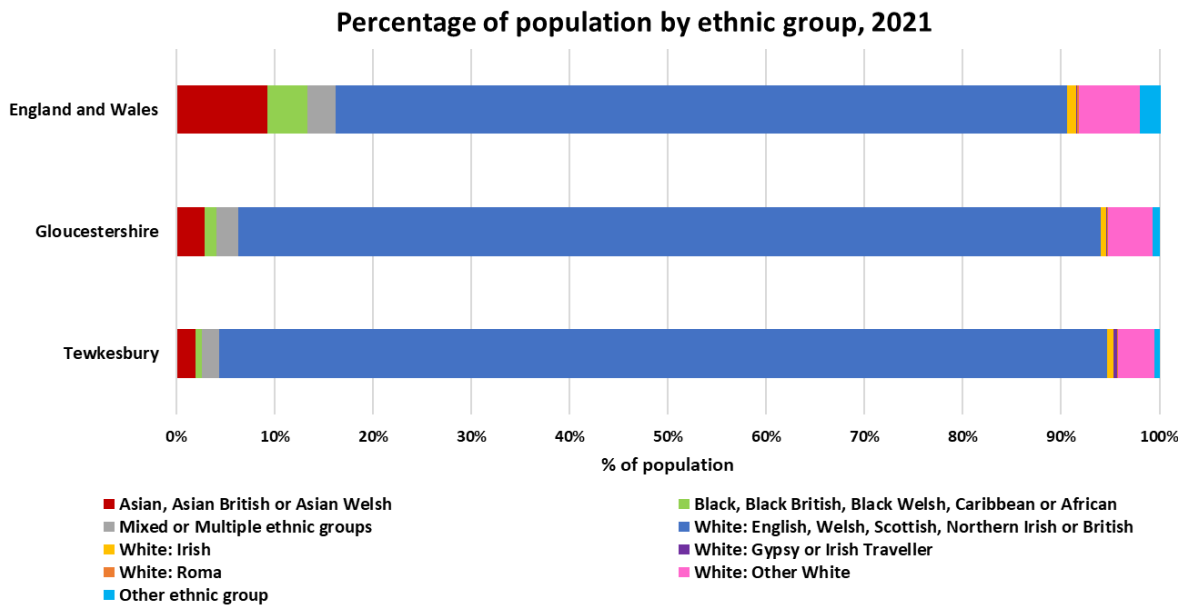


Ethnic groups

9.7% of the population identify as “ethnic minorities” (includes all groups except white: British)

White: White Other
largest ethnic minority group

98.0% increase in proportion of people from ethnic minority backgrounds 2011-21



Country of birth

1 in 10 people not born in the UK

Poland is the country where the highest number of non-UK people were born

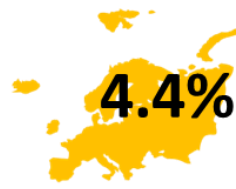
54% increase in the non-UK born population between 2011-21

United Kingdom Europe (Non-UK) Africa
Proportion of 2021 population:



2011: 76,661

2021: 87,116



2,869

4,133



755

1,041



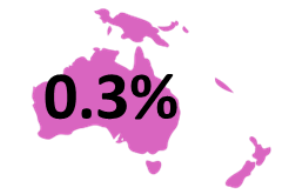
902

1,685



506

583



N/A

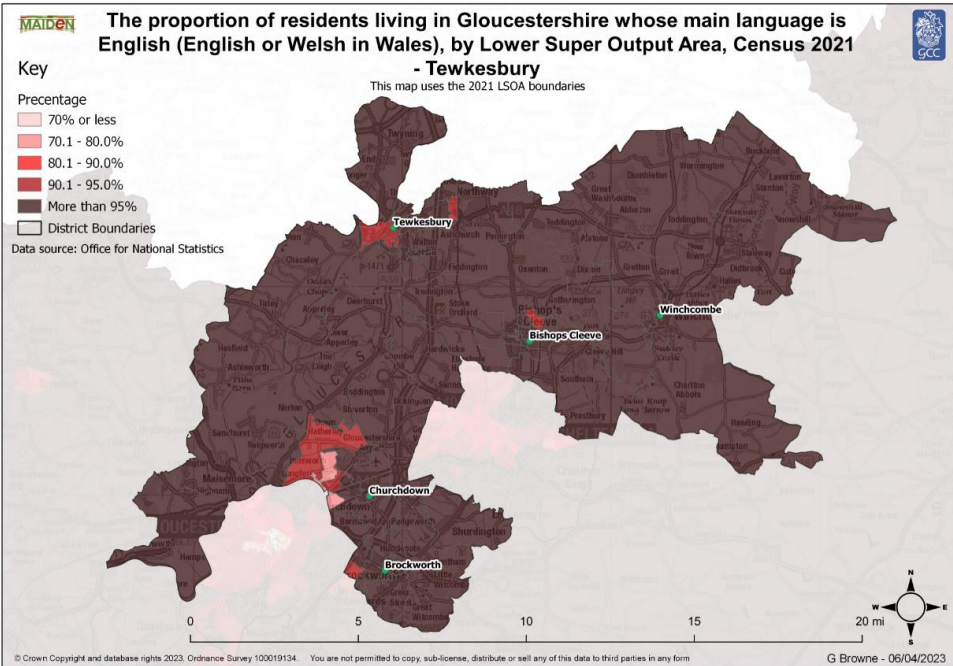
288

Language

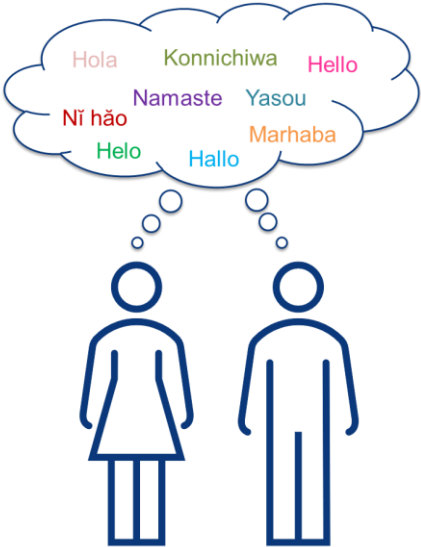
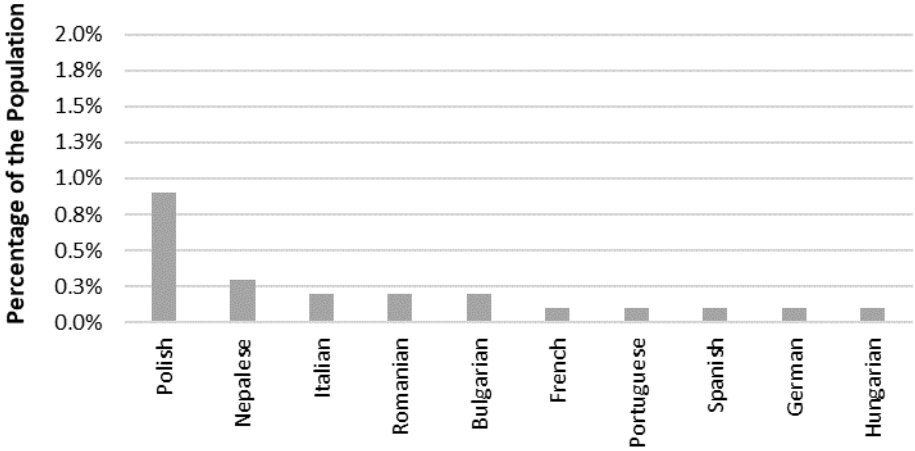
96.6% of population chose English as main language

1.1pp increase in the proportion who do not speak English as main language

0.5% cannot speak English well or at all



Top 10 languages that are not English (English or Welsh in Wales), 2021- Tewkesbury

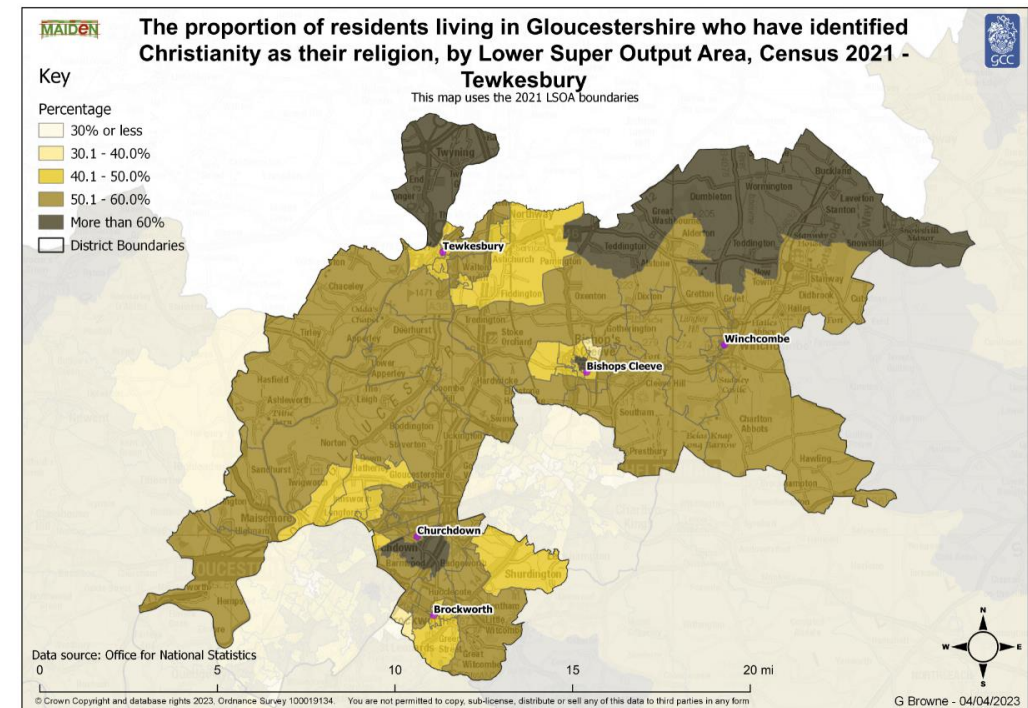
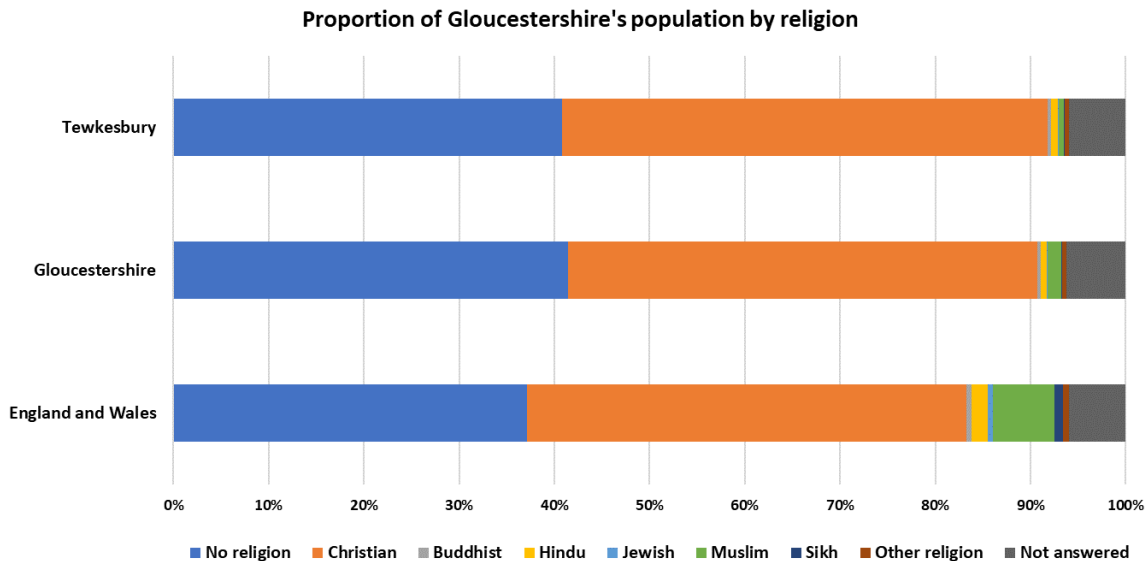


Religion

53.2% of Tewkesbury's population stated a religion

11.4% decrease in number of Christians

89.4% increase in people with no religion



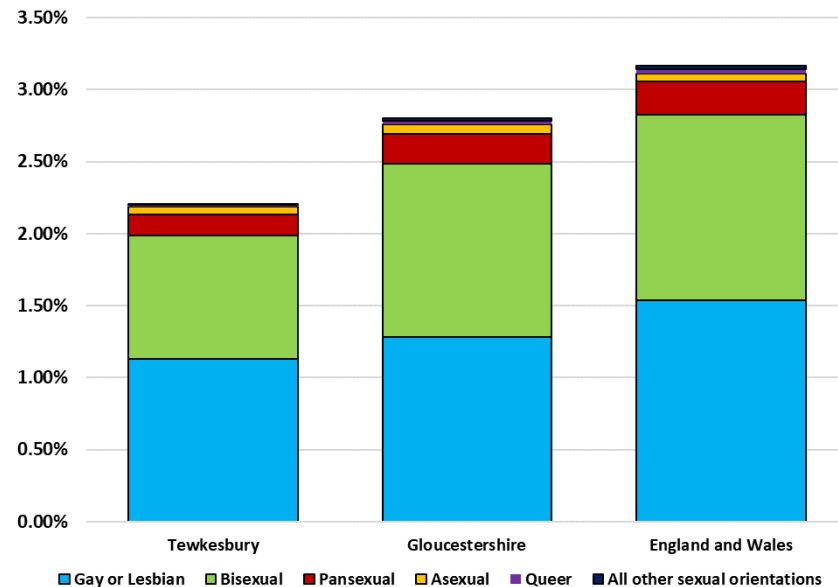
Sexual orientation and gender identity

2.2% of the population gave a sexual orientation other than straight or heterosexual

0.3% of the population do not have the same gender identity as at birth

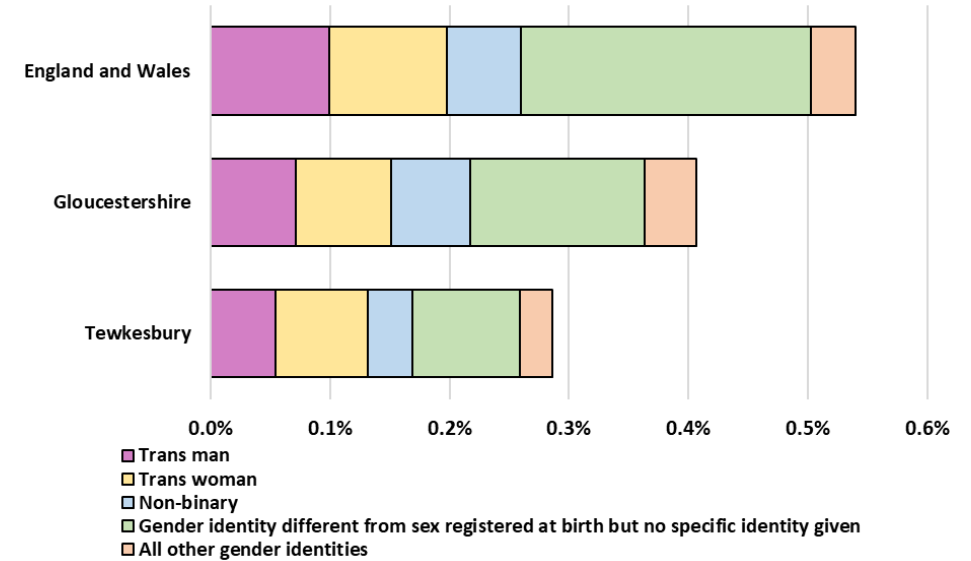
Around **1 in 20** people chose not to answer the sexual orientation and gender identity questions

Proportion of the population in each sexual orientation category* in England and Wales



*Excluding straight or heterosexual (91.6% of Tewkesbury's population) and the not answered category

Proportion of the population in each gender identity category* in England and Wales



*Excluding Gender identity the same as sex registered at birth (94.9% of Tewkesbury's population) and the not answered category

Marriage and civil partnership



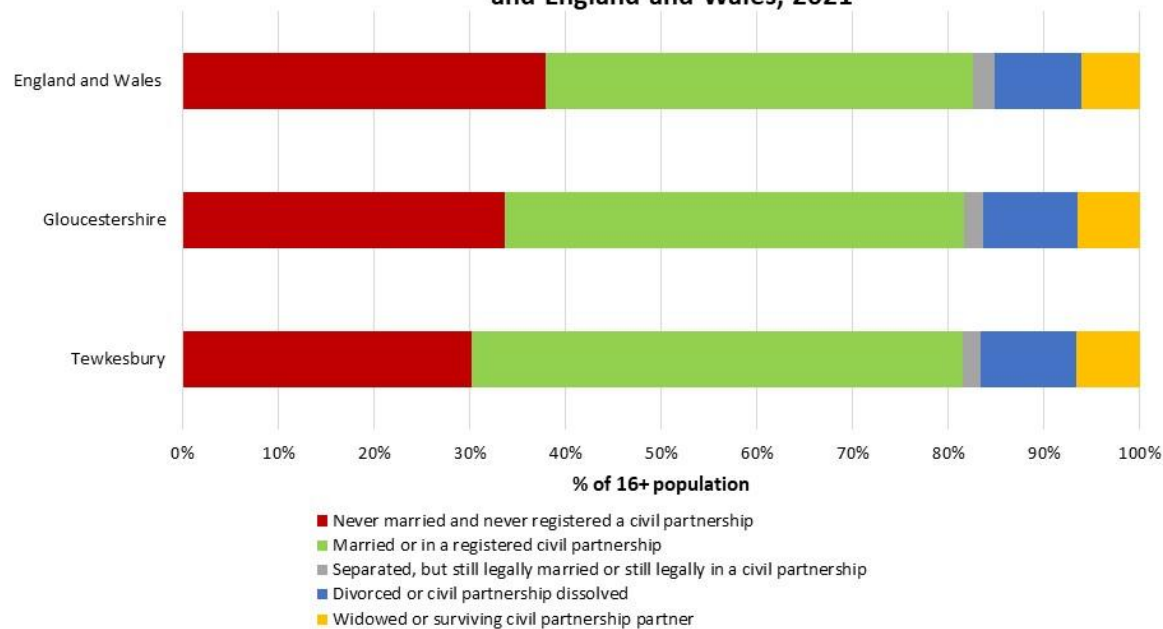
51.3% were married or in a civil partnership

11.8% were separated or divorced

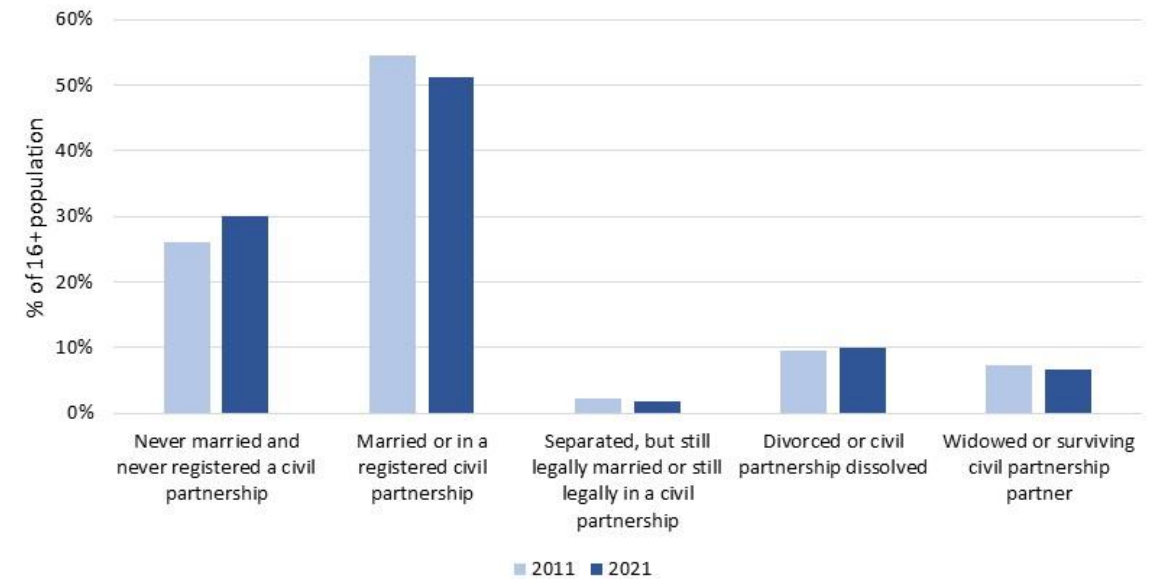


33.0% increase in those never married or never in a civil partnership

Proportion of 16+ population by marital status Tewkesbury, Gloucestershire and England and Wales, 2021



Proportion of Tewkesbury's population by marital status, 2011 and 2021



Household composition



28.2% of households
were one person
households

14.0% of households
were one person households
aged 66+

**Little change in
household composition
since 2011**



One person
household
(28%)



Couples with
children
(27%)



Couples with
no children
(20%)

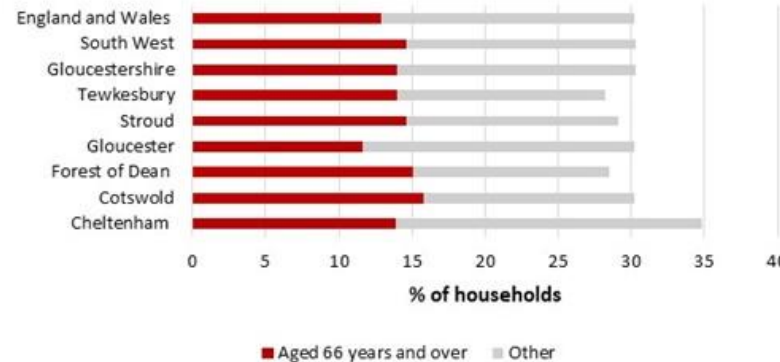


Other
households
(16%)

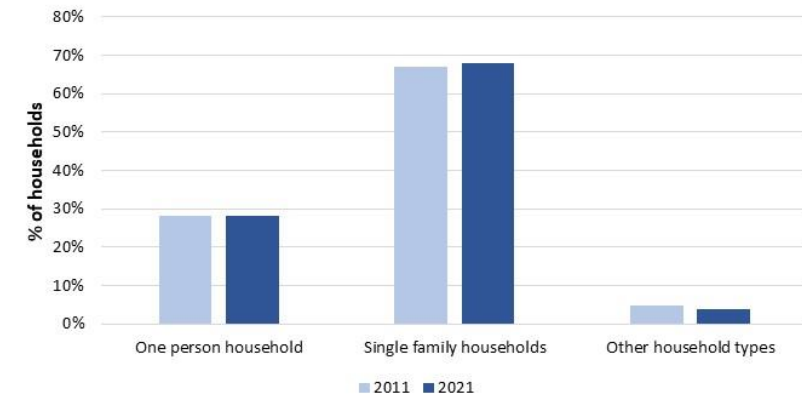


Lone parent
family
(9%)

Breakdown of one person households by district,
2021



Proportion of Tewkesbury's households by composition
type, 2011 and 2021



Self-reported health



1 in 2 people with very good health

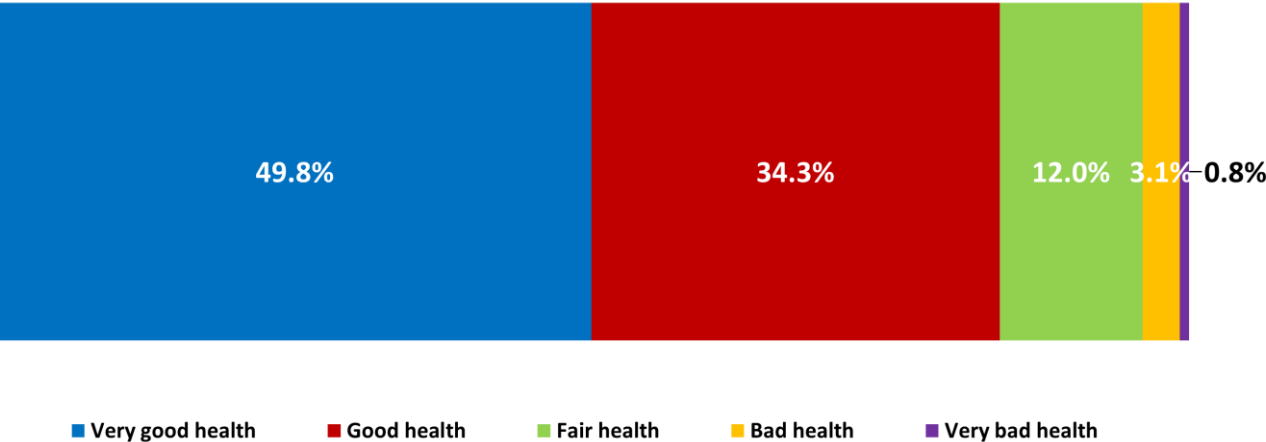


16.2% increase in people with fair, good or very good health

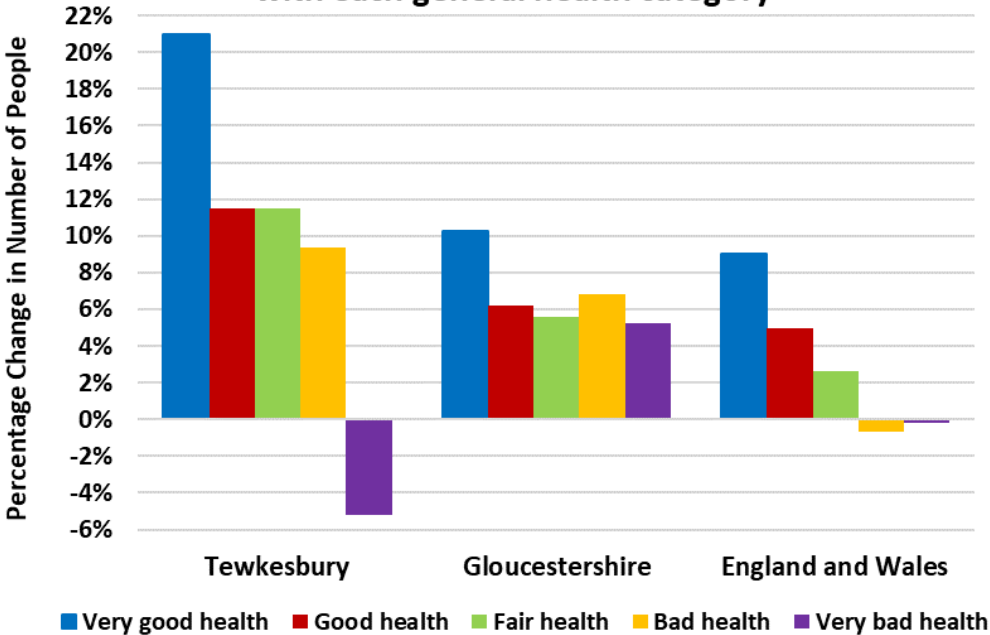


6.0% increase in people with bad or very bad health

Proportion of Tewkesbury's population according to each general health category, 2021



Percentage change in number of people identifying with each general health category



Disability

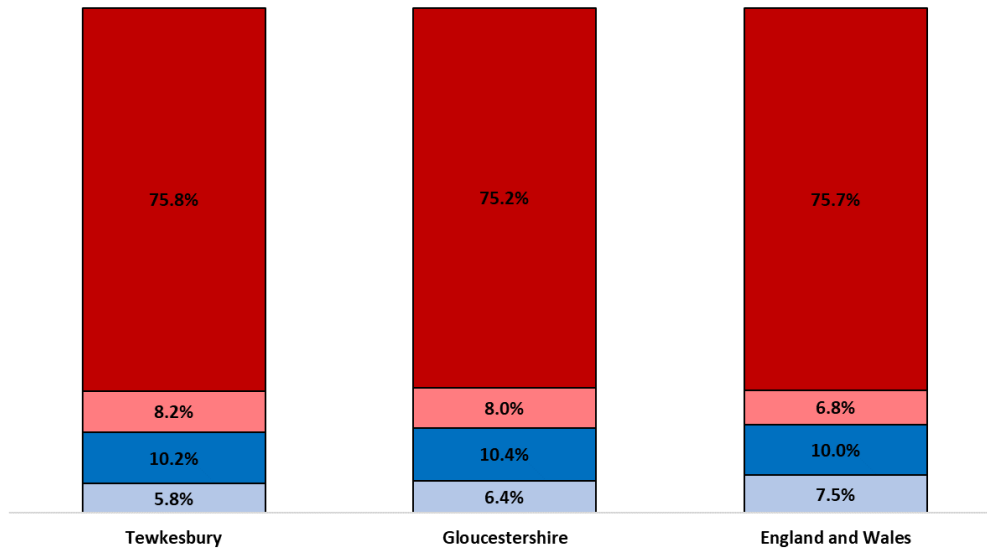
16.0% of the population are disabled under the Equality Act (2010)

8.2% not disabled but do have a long term physical or mental health condition(s)

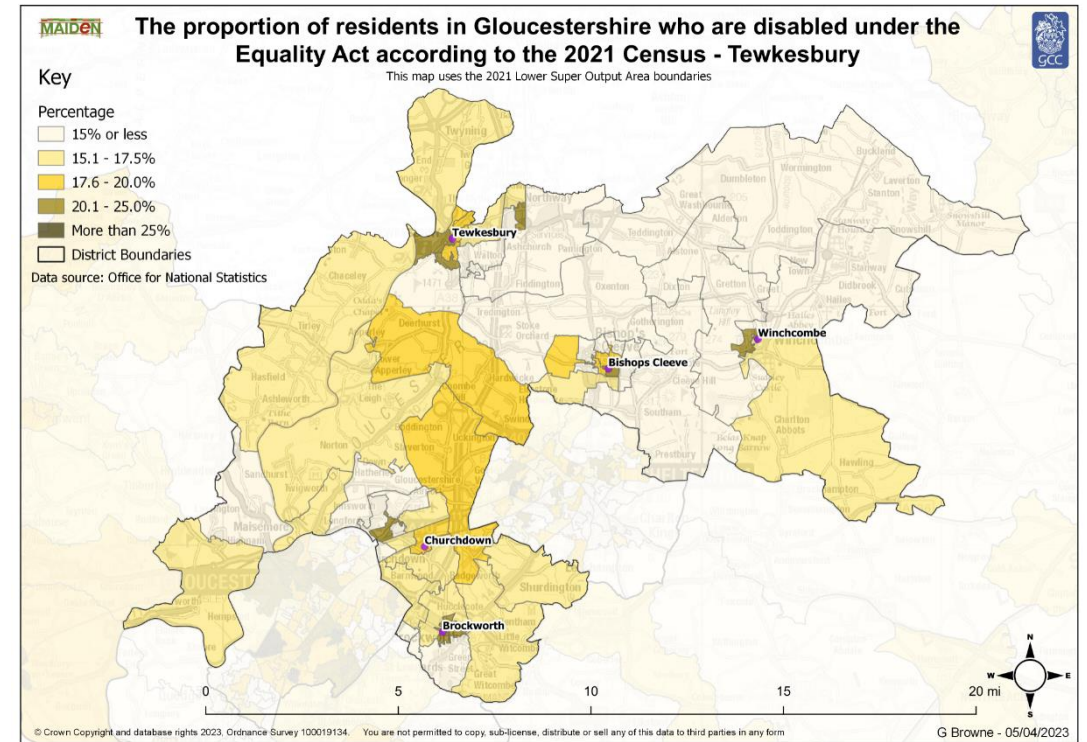


In some LSOAs 1 in 4 people are classed as disabled

Proportion of the population by disability status



- Not disabled under the Equality Act: No long term physical or mental health conditions
- Not disabled under the Equality Act: Has long term physical or mental health condition but day-to-day activities are not limited
- Disabled under the Equality Act: Day-to-day activities limited a little
- Disabled under the Equality Act: Day-to-day activities limited a lot



Living our values every day



Accountable



Integrity



Empower




Respect



Excellence



Unpaid carers

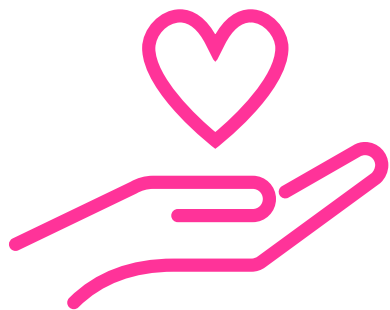


8.5% of residents are unpaid carers

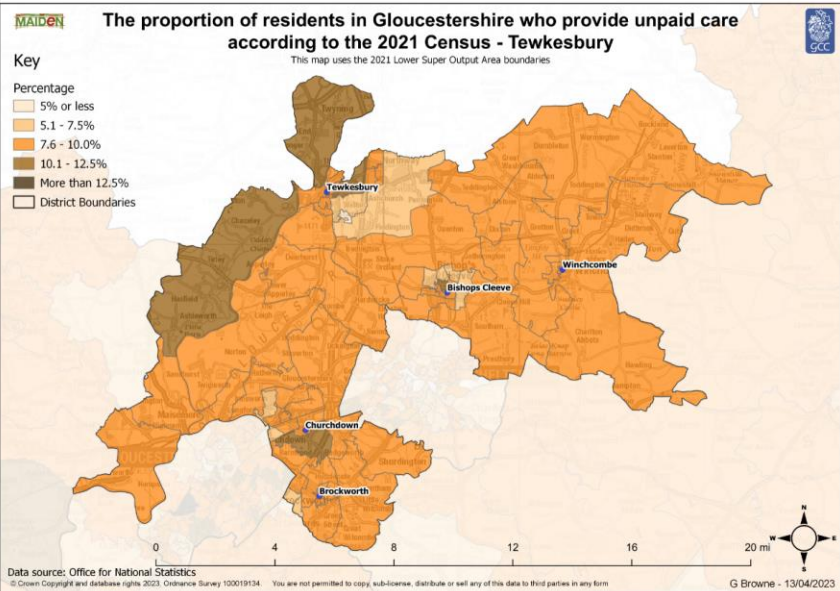
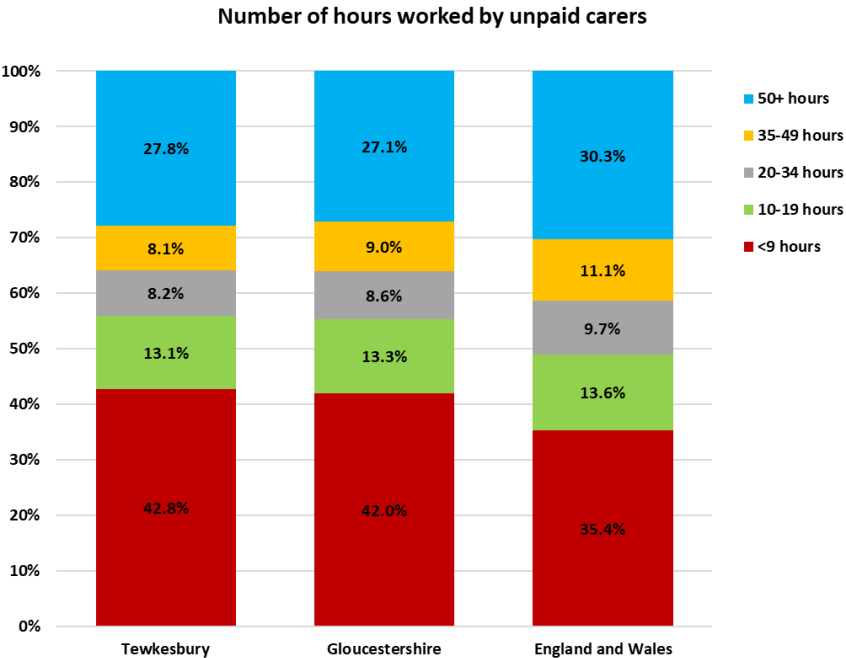


Most carers provide less than 9 hours or more than 50 hours care

Unequal distribution of the proportion of people providing unpaid care across the district and county



7,605
unpaid carers



Living our values every day



Accountable



Integrity



Empower



Respect



Excellence



Armed forces veterans



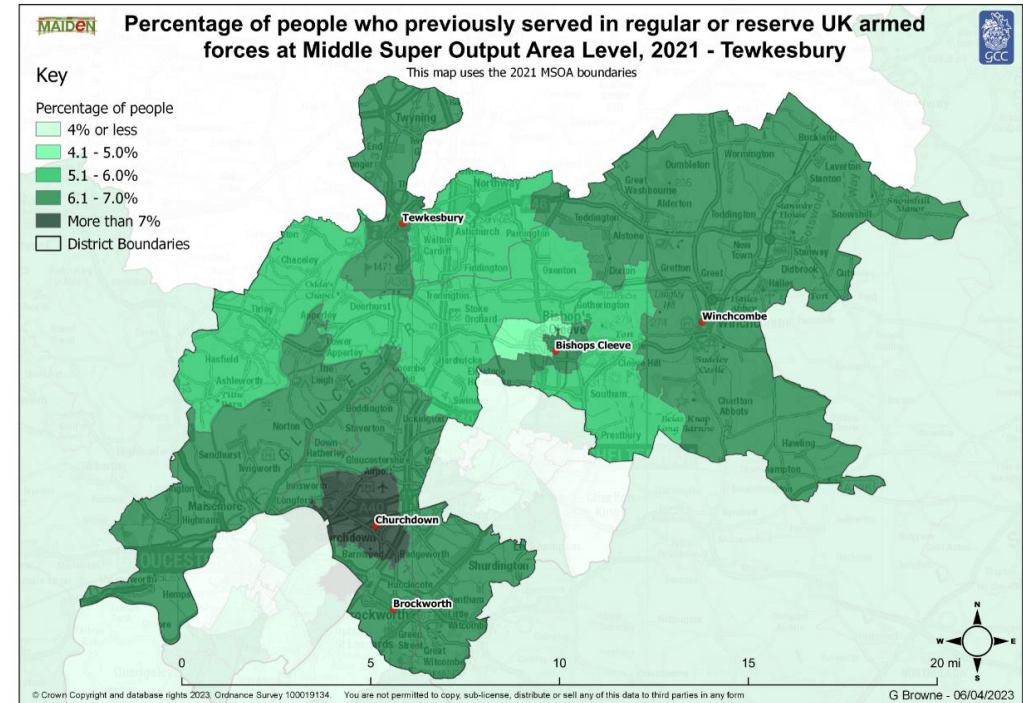
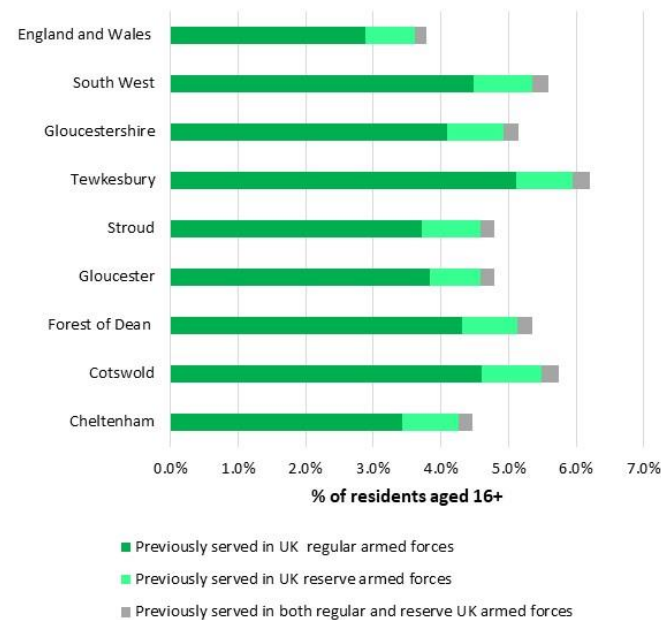
More than **1 in 20** people aged 16+ are armed forces veterans

4,799 people are armed forces veterans



1 in 10 households contained an armed forces veteran

Percentage of 16+ residents who have previously served in the armed forces, 2021



Education

Living our values every day



Accountable



Integrity



Empower



Respect



Excellence



Highest level of qualification

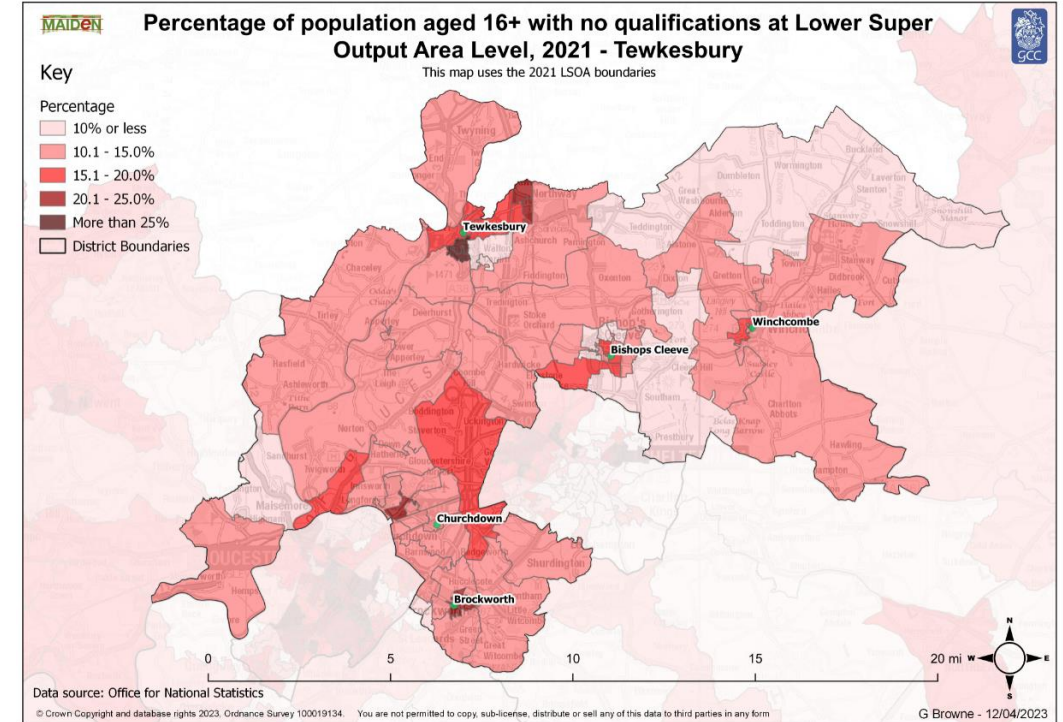
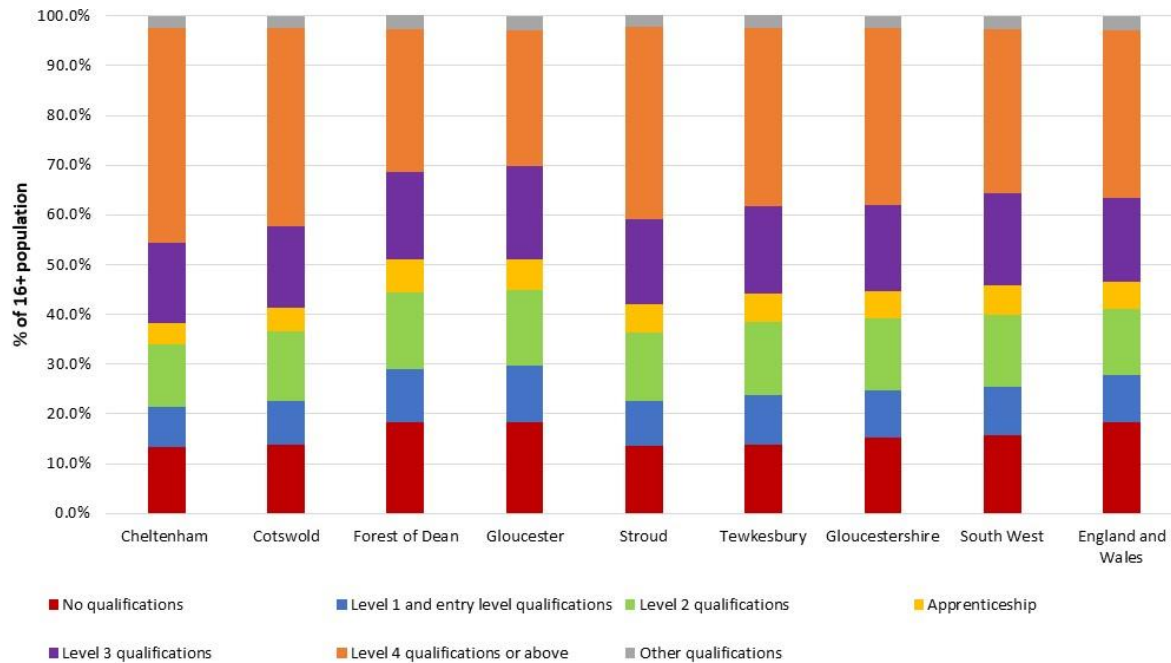


35.9% of 16+ year olds qualified to Level 4+

13.9% of 16+ year olds have no qualifications

5.7% of 16+ year olds have an apprenticeship

Percentage of the population aged 16+ by highest level of qualification, 2021



Living our values every day



Accountable



Integrity



Empower



Respect



Excellence



Employment

Living our values every day



Accountable



Integrity



Empower




Respect



Excellence



Economic activity

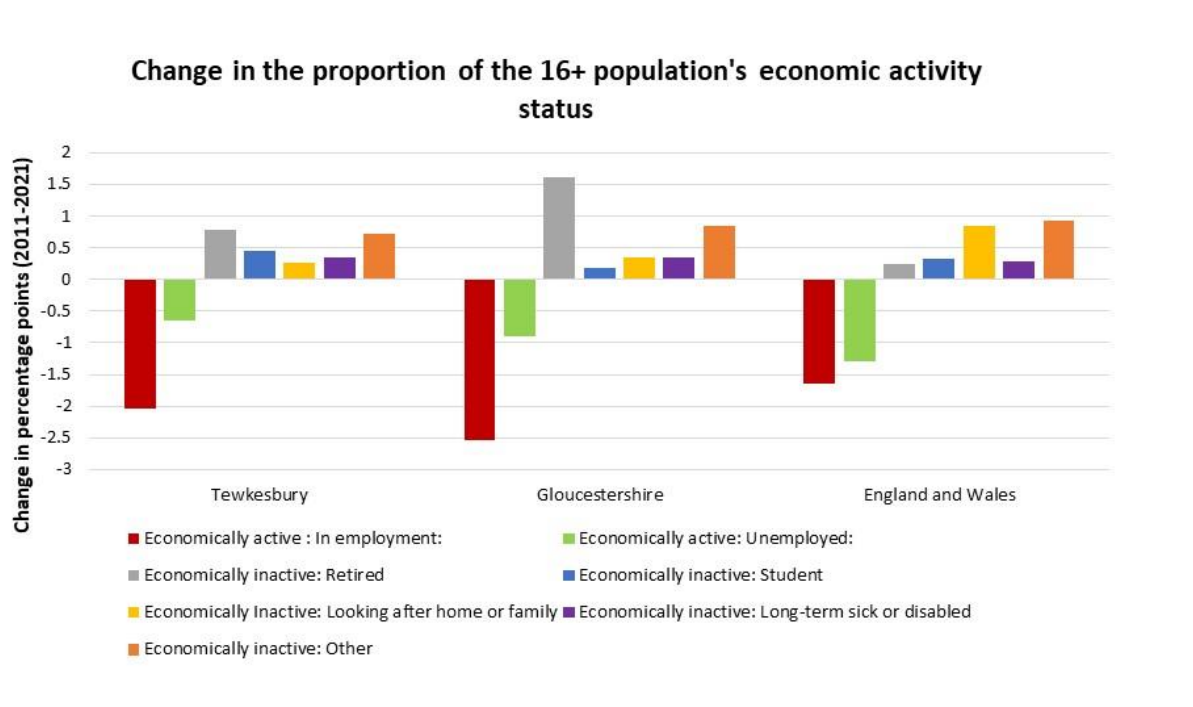
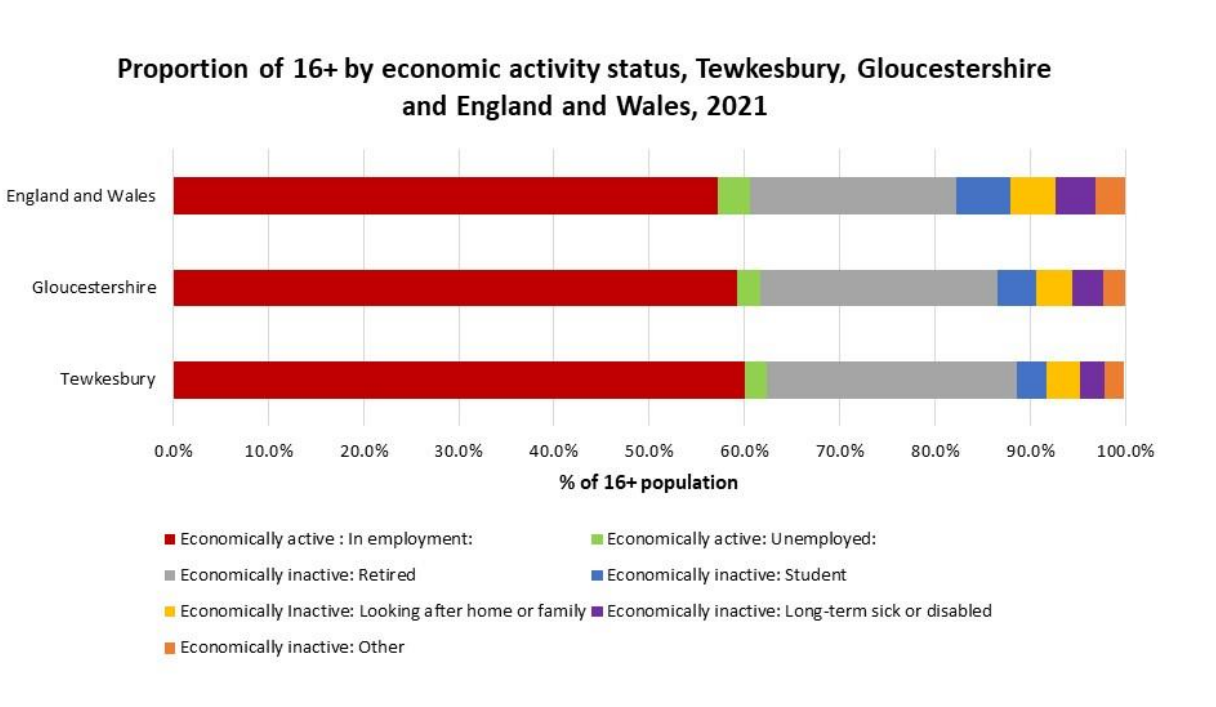


62.3% of 16+ were economically active

37.7% of 16+ were economically inactive



23.4% increase in economic inactivity



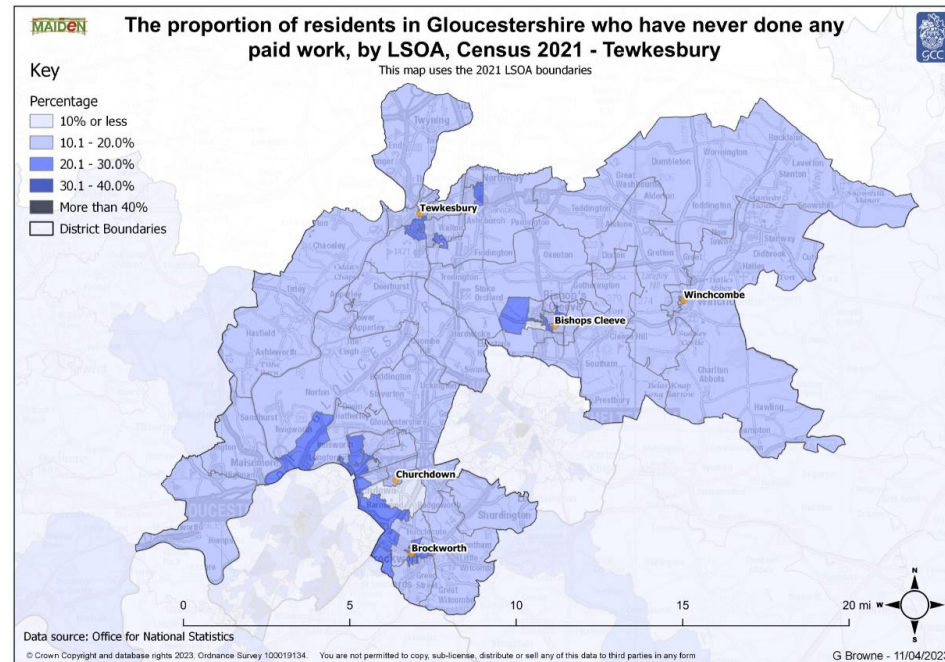
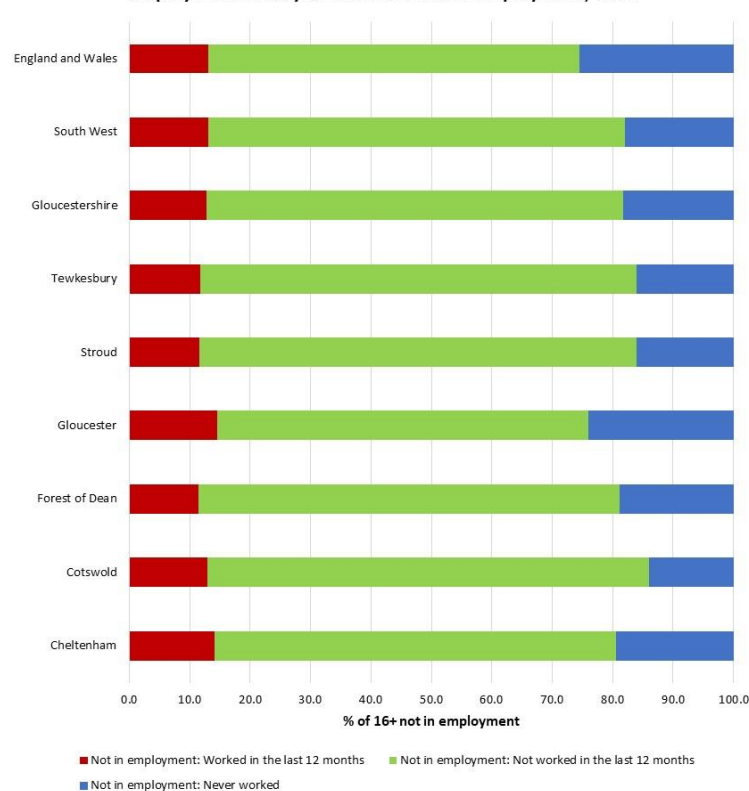
Not in employment

30,829 people 16+ not in employment

72.2% not in employment in the last 12 months

16.1% have never worked

Employment history of those 16+ not in employment, 2021



Industry



Wholesale & retail trade was the largest sector

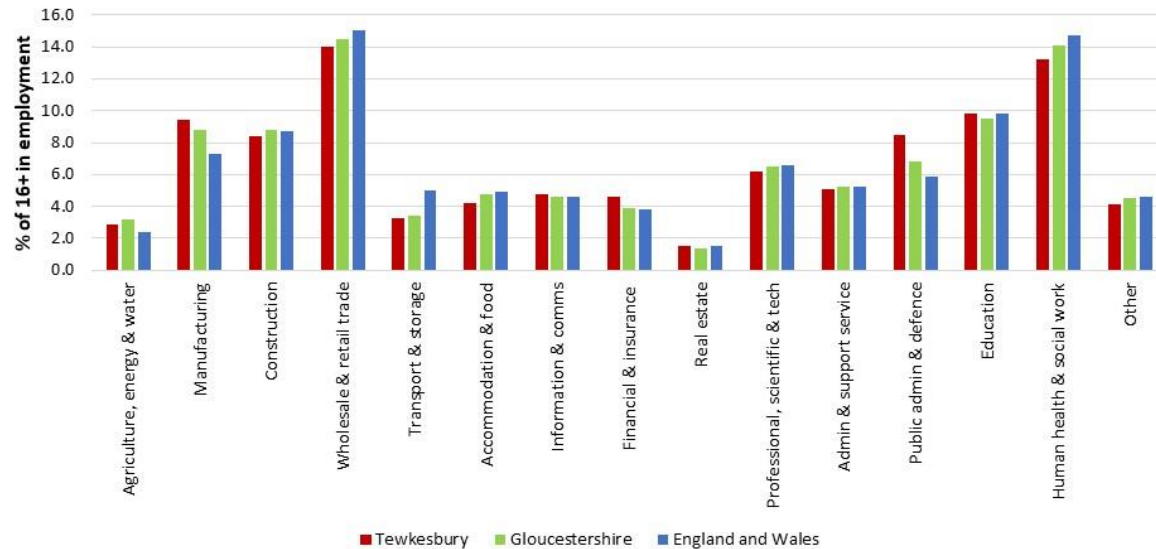


Human health & social work was the second largest sector

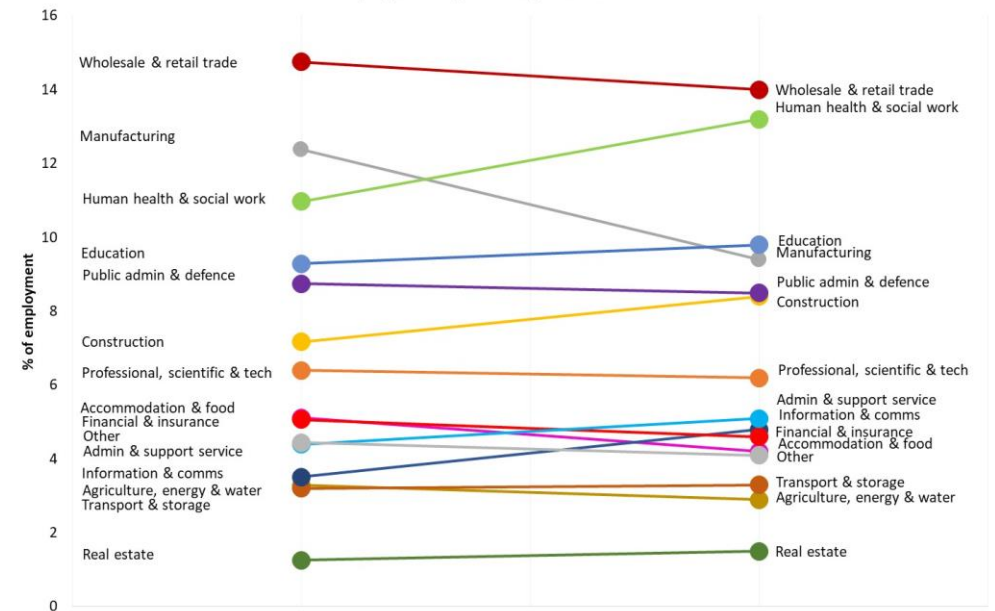


16.0% decline in employment in manufacturing

Percentage of employment by industry



Employment by industry, 2011 and 2021



Occupation



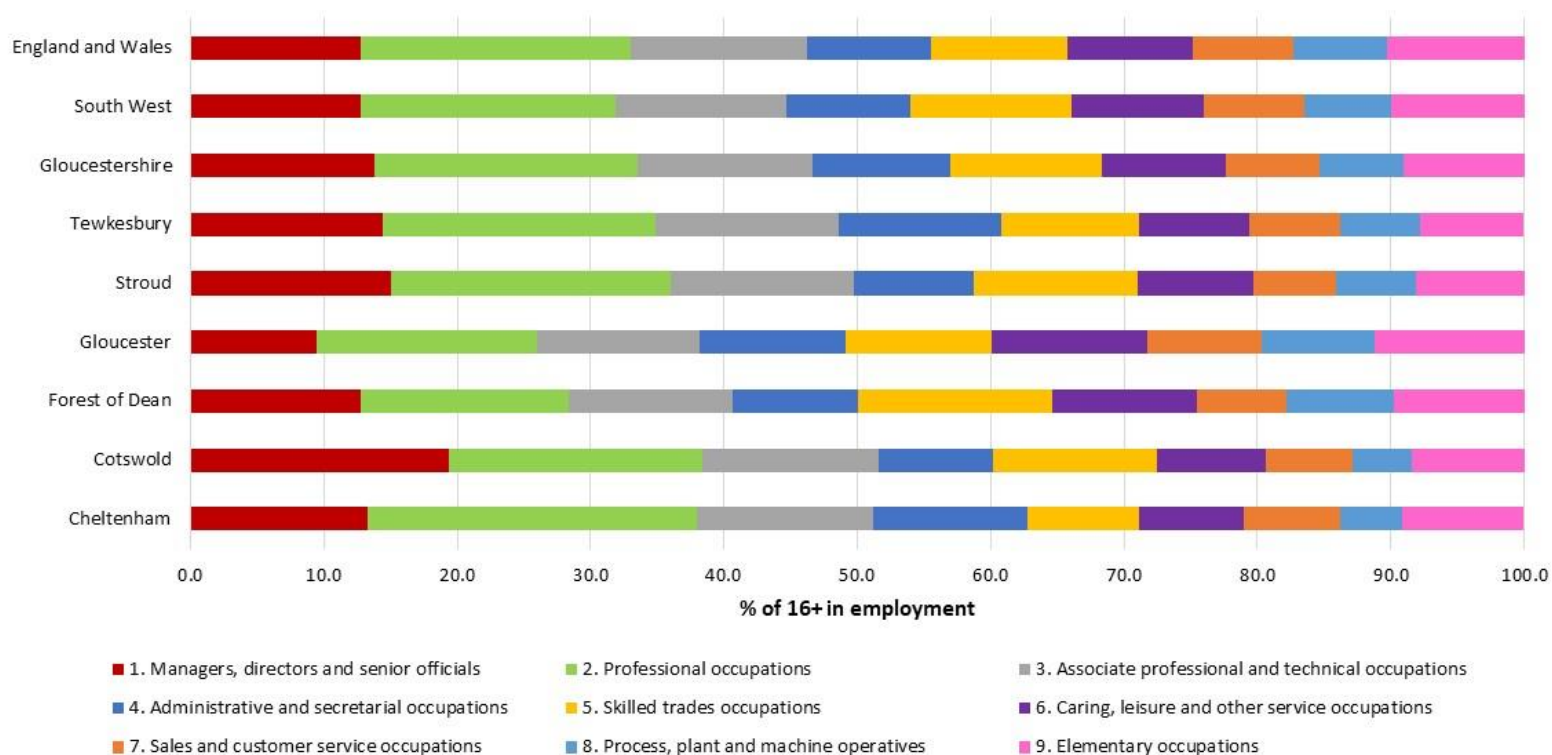
20.5% employed in professional occupations

48.6% employed in managerial, professional or associate professional occupations



10.3% employed in skilled trades

Percentage of employment by occupation, 2021



Housing



Tenure



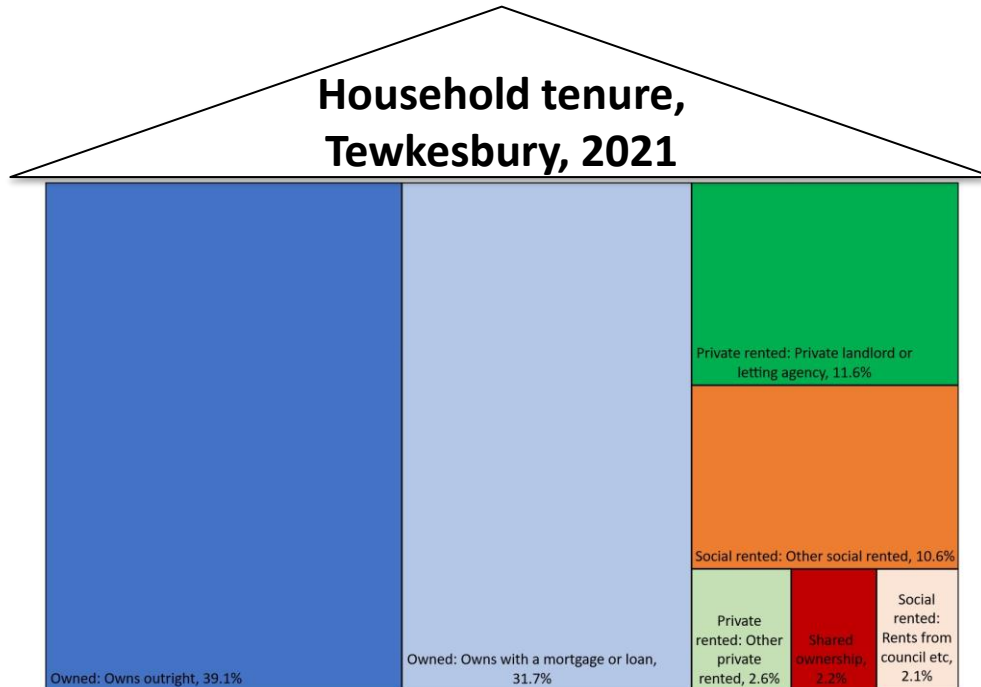
70.8% of households were owner occupied

12.7% of households were social rented

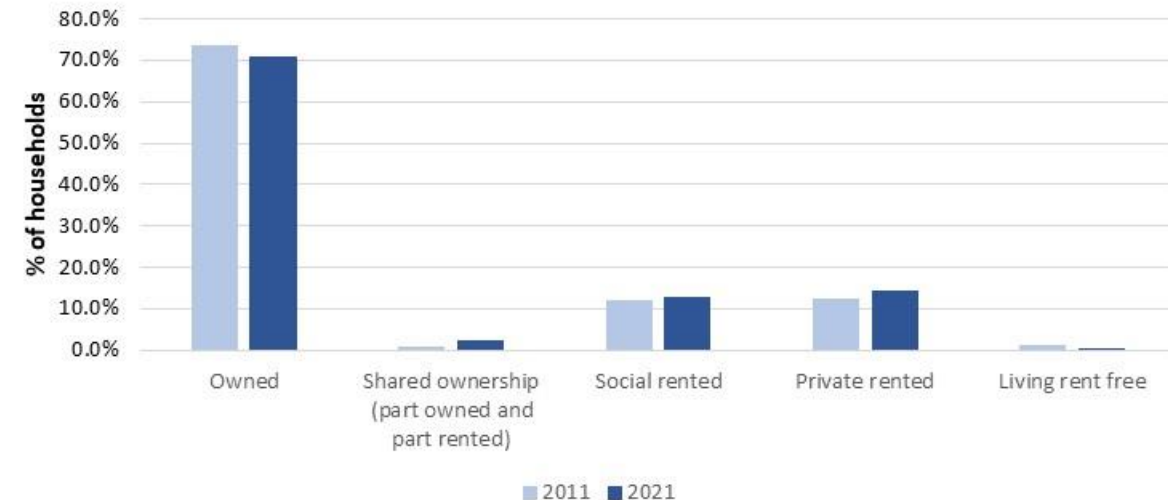


34.2% increase in households which were private rented

Household tenure,
Tewkesbury, 2021



Proportion of Tewkesbury's households by household tenure, 2011 and 2021



Household occupancy



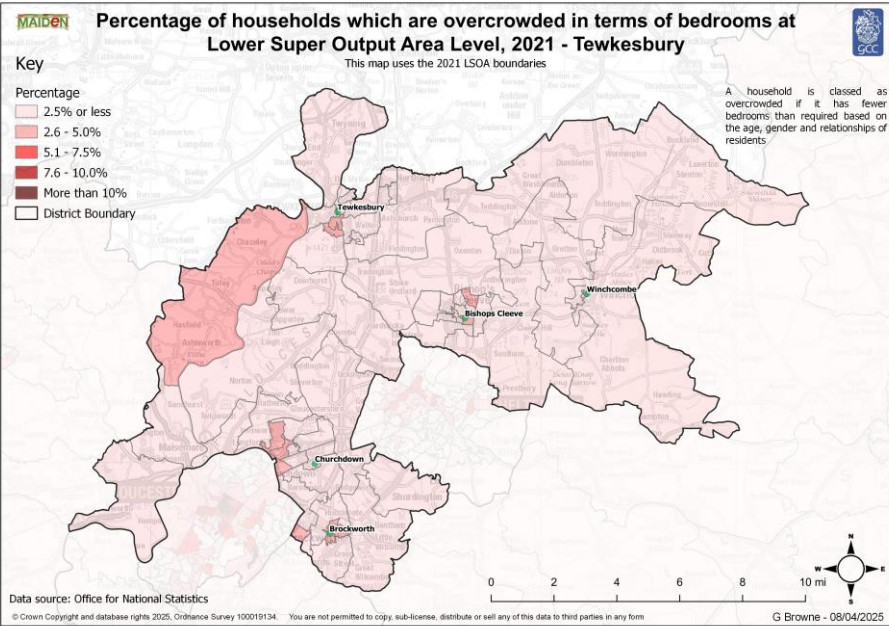
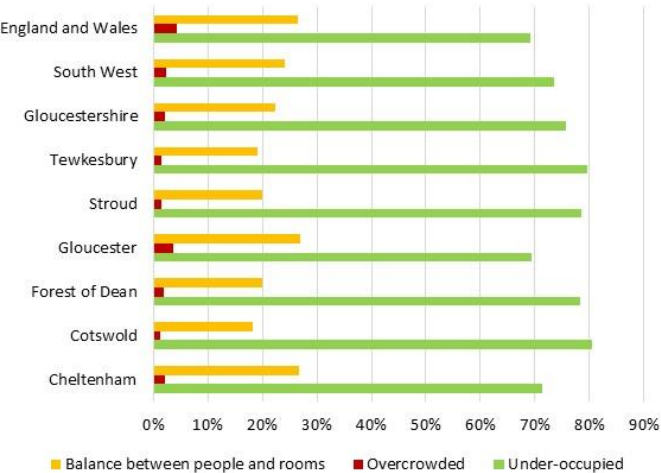
79.6% of households are under- occupied

1.4% of households are over occupied

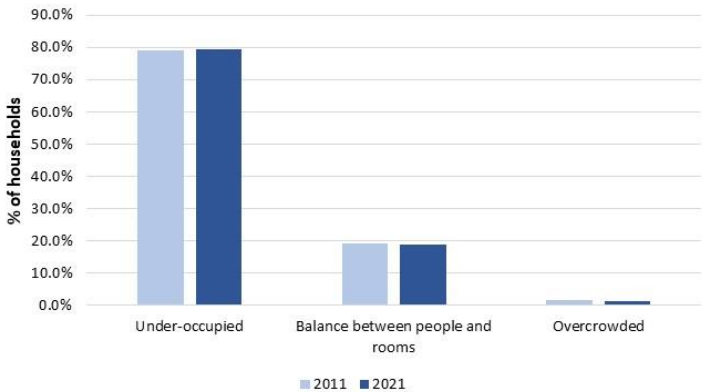


5.2% decline in overcrowded households

Percentage of households by occupancy (bedrooms), 2021



Proportion of Tewkesbury households by occupancy (bedrooms), 2011 and 2021



Household car ownership



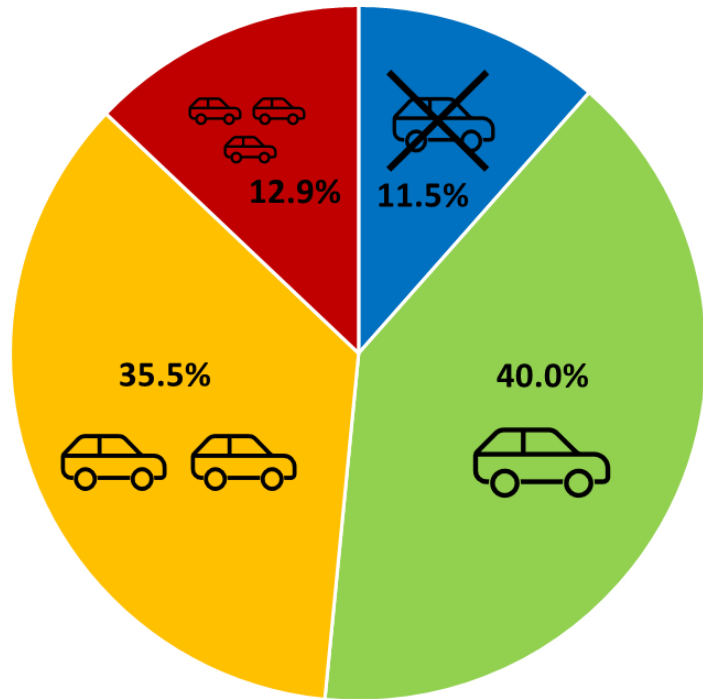
11.5% households
did not own a car or van



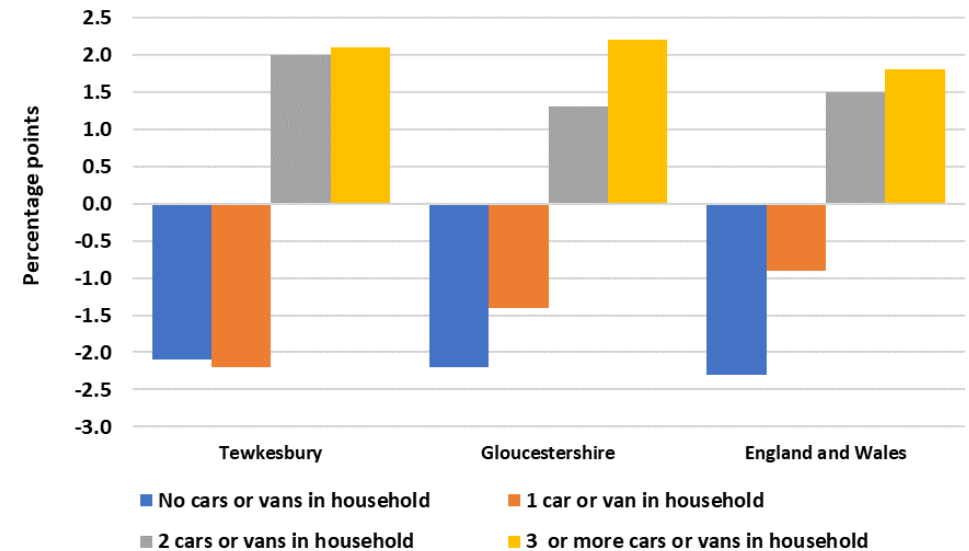
40.0% households
owned one car




19.3% increase in
car ownership between
2011-2021




Change in percentage points in the proportion of households by car or van availability, 2011-2021




Central heating



1.1% of households had no central heating

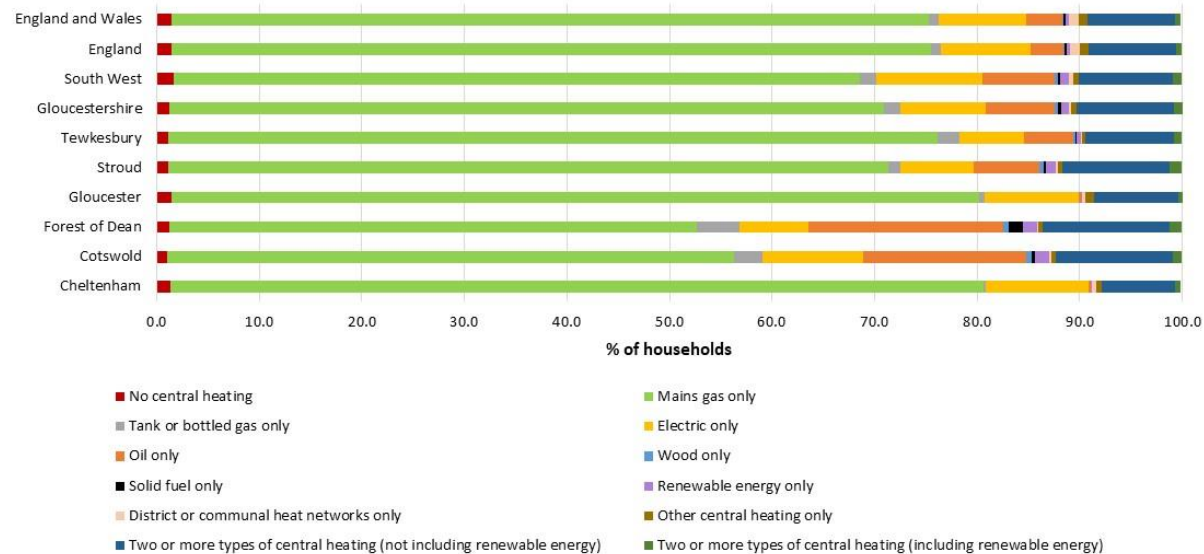


1.1% of households used renewable energy

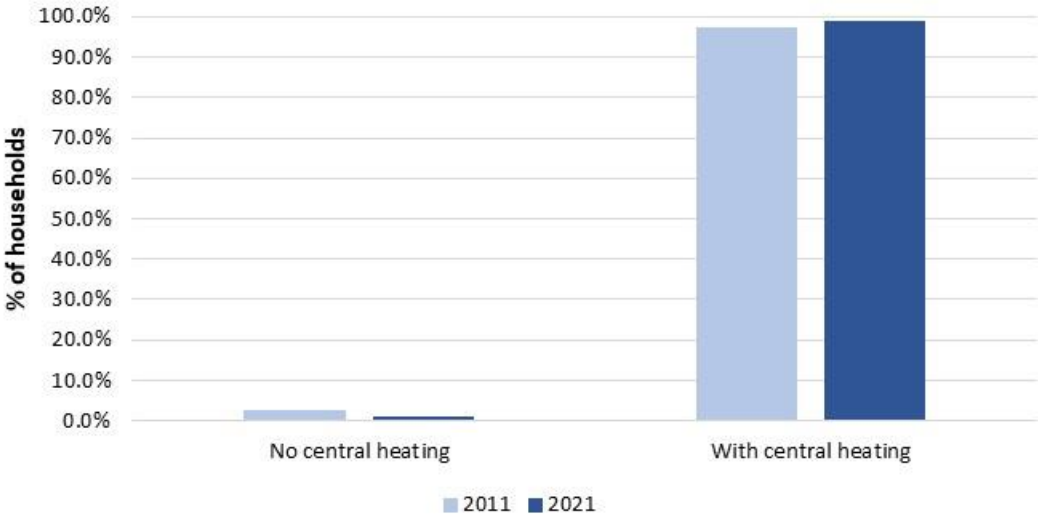


50.7% decrease in households without central heating

Percentage of households by types of central heating, 2021



Proportion of Tewkesbury's households by central heating, 2011 and 2021



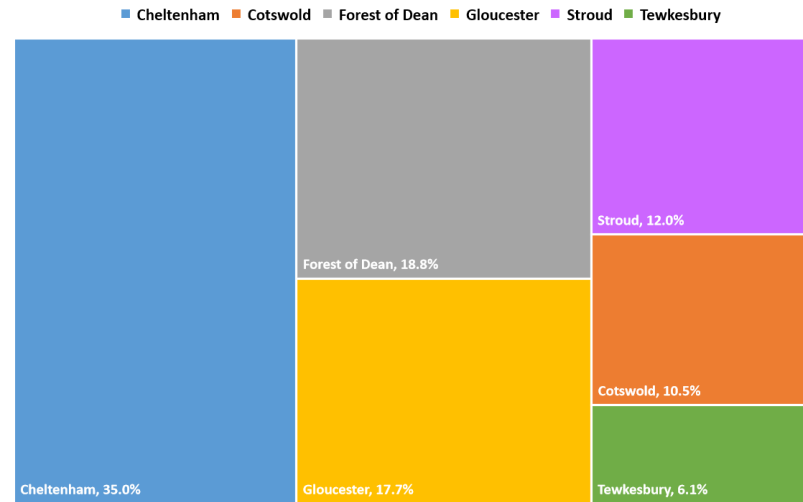
Communal establishments


 **613** communal establishment residents

 **48.6%** residents lived in non NHS/LA care homes with nursing

 **1 in 2** residents are female

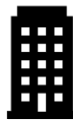
Distribution of communal establishment residents by district




Defence 20.5%
Top 3 communal establishments

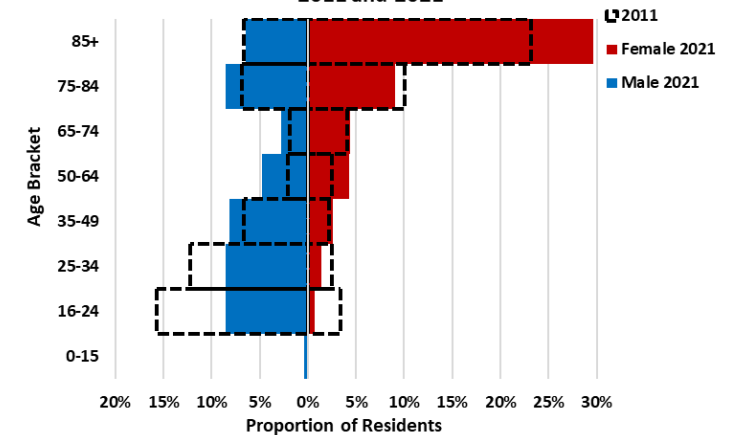


Non NHS/LA care home with nursing 48.6%



Non NHS/LA care home without nursing 21.8%

Proportion of Residents Living in Communal Establishments by Sex and Age Bracket in Tewkesbury, 2011 and 2021



Living our values every day



Accountable



Integrity



Empower



Respect



Excellence

