

Highways

• Highways Commissioning
Block 5, 6th Floor East
Shire Hall
Gloucester GL1 2TH

08000 514 514

Gloucestershire.gov.uk/highways/roads/contact-us/

Reference: 70013239

Date:

Dear Sir, Madam,

Surface Dressing to improve local roads – Road Closure

Scheme name: **Fosseway to Clapton-on-the-Hill**
Provisional date: **Week Commencing 20th July for 1 day 07:00 – 19:00**

Please see the site map overleaf and below link for information regarding upcoming surface dressing work, happening in your area shortly.

The start date is dependent on several factors and can be affected by events like; rain (we cannot lay material on wet surface), extreme hot temperatures, machine availability or plant breakdown.

All this means the scheme date can change at short notice and we urge you to keep an eye on our programme online or local signs for changes.

We politely ask for no parking on the roads during these works.

Whilst we appreciate that this makes it very hard to plan your daily activities, because of the reasons stated above, are unable to provide the exact date of work weeks in advance. However, we wanted to make you aware of the upcoming disruption.

To complete the works as quickly as we can and to be able to move from site to site efficiently, we will be completing sites in an area order. Please be aware that the crew may work on several sites each day and may not arrive until later in the day.

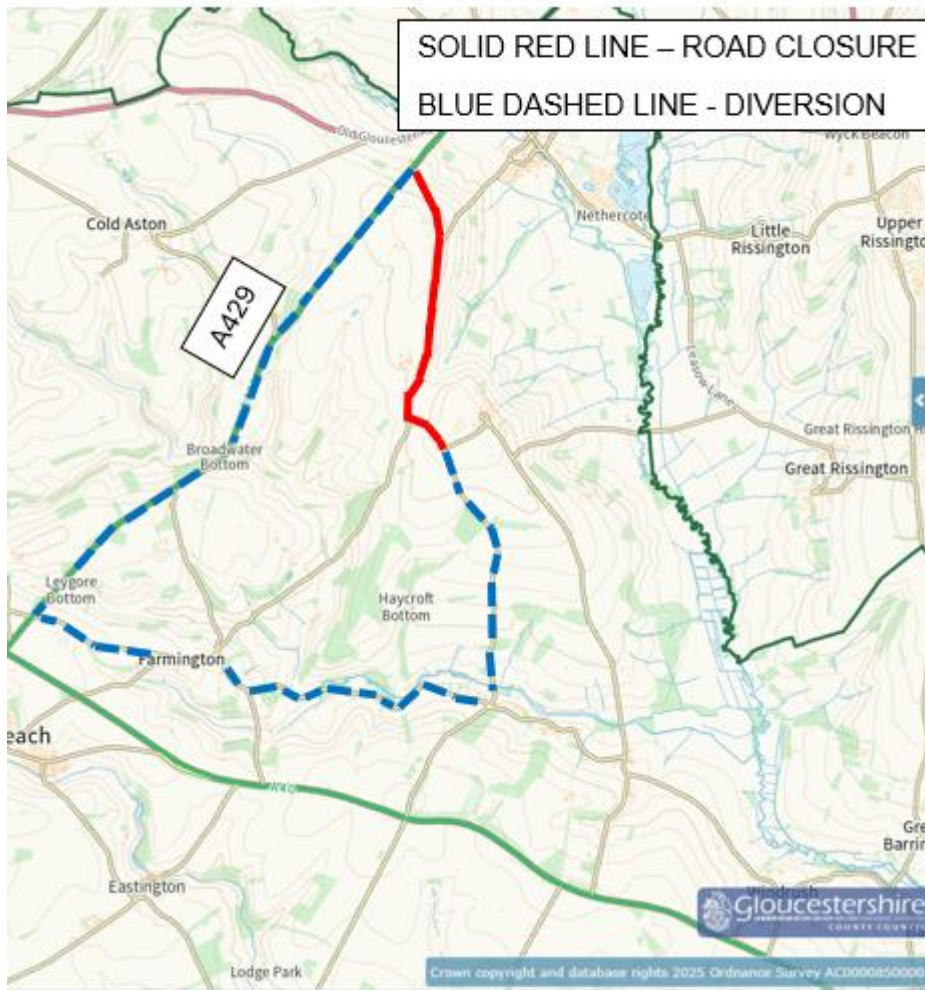
For further information please visit our online schedule (See below link) and our social media feeds updated with more details if changes happen.

www.gloucestershire.gov.uk/surfacedressing

If you do not have access to the internet or social media, you may wish to ask friends or neighbours to help you access our website. If you know of neighbours who cannot access our website, please share this information with them.

Highways

FOSEWAY TO CLAPTON ON THE HILL – SITE MAP



Yours faithfully,

Nick Holder, Supervisor for and on behalf of Ringway