

Unemployment Bulletin

Issue 43 February 2012

Contents

Part 1: Summary

A summary of unemployment data at district, County, regional and national level

1

Part 2: County

Unemployment figures for the County compared to the South West and the rest of the UK

3

Part 3: Districts

A comparative break down of unemployment figures by district

4

Part 4: Wards

Further breakdown of unemployment figures by ward:

Cheltenham

6

Cotswolds

8

Forest of Dean

10

Gloucester

12

Stroud

14

Tewkesbury

16

Part 5: Map

Distribution of claimant rate across Gloucestershire

18

Part 6: Young People

Data about Young People Not in Education, Employment or Training (NEET)

20

INTRODUCTION

The Unemployment Bulletin provides a monthly update on unemployment data for Gloucestershire, the South West region and the United Kingdom. It is produced by the Strategic Needs Analysis Team in the County Council's Strategy and Challenge function. The data is sourced from the Office for National Statistics via Nomis (www.nomis.co.uk).

The claimant count measures the number of people claiming unemployment-related benefit (currently Job Seeker's allowance). The claimant rate is the number of claimants as a proportion of the working age population.

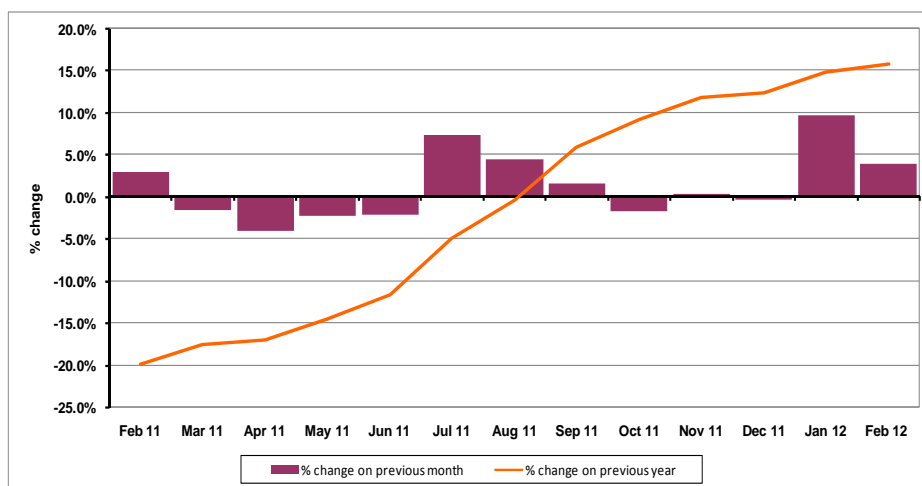
PART 1: SUMMARY

The claimant rate in Gloucestershire was 3.0% in February 2012. This was an increase of 0.1% on the January 2012 figure. The UK and South West rate also increased to 4.2% and 3.0% respectively. Gloucestershire's rate was the same as the South West average of 3.0%, and 1.2% lower than the UK average of 4.2%.

The claimant count in Gloucestershire in February 2012 increased by 416 people. The amount of people claiming in February 2012 was 3.9% higher than the number in January 2012. This compares to a 3.0% increase in the South West and a 2.2% increase for the UK.

The year on year claimant count in Gloucestershire has increased. The count was 15.8% higher in February 2012 than at the same point in the previous year as shown in the graph below.

Gloucestershire claimants - Month on Month and Year on Year change: February 2011 to February 2012



Source: ONS Crown Copyright Reserved

Produced by:

Strategic Needs Analysis Team
Strategy and Challenge
Gloucestershire County Council
March 2012

DISTRICTS AT A GLANCE

At a glance unemployment information grouped by district. Includes:

Claim count: Total number of people claiming Job Seekers Allowance in February 2012

Compared to last month: How much larger/smaller February's claimant count is compared to January, expressed as a %

Claimant rate: The % of working population claiming Job Seekers Allowance in February 2012

Highest claiming ward: The ward with the highest claim count in that district and the rate

CHELTENHAM BOROUGH

Claim count:	2,543
Compared to last month:	+3.0
Claimant rate:	3.4%
Highest claiming ward	Hesters Way (7.2%)

GLOUCESTER CITY

Claim count:	3,346
Compared to last month:	+4.6%
Claimant rate:	4.4%
Highest claiming ward	Westgate (8.7%)

COTSWOLD DISTRICT

Claim count:	830
Compared to last month:	+3.2%
Claimant rate:	1.6%
Highest claiming ward	Cirencester Watermoor (3.9%)

STROUD DISTRICT

Claim count:	1,538
Compared to last month:	+2.1%
Claimant rate:	2.2%
Highest claiming ward	Slade (6.1%)

FOREST OF DEAN

Claim count:	1,603
Compared to last month:	+6.7%
Claimant rate:	3.1%
Highest claiming ward	Coleford Central (5.8%)

TEWKESBURY BOROUGH

Claim count:	1,222
Compared to last month:	+3.1%
Claimant rate:	2.4%
Highest claiming ward	Tewkesbury Prior's Park (6.3%)

YOUNG PEOPLE NOT IN EDUCATION, EMPLOYMENT OR TRAINING (NEET)

As at the end of February 2012 there were 708 young people aged 16-18 not in education, employment or training in Gloucestershire and this figure translates into an adjusted (*) 16-18 NEET population of 4.8%.

PART 2: UK, SW AND GLOUCESTERSHIRE INDICATORS

The unemployment situation in Gloucestershire compared to the South West and the UK.

Claimant Rate

Figure 1: Claimant Rate for Gloucestershire, the South West and UK over the past year

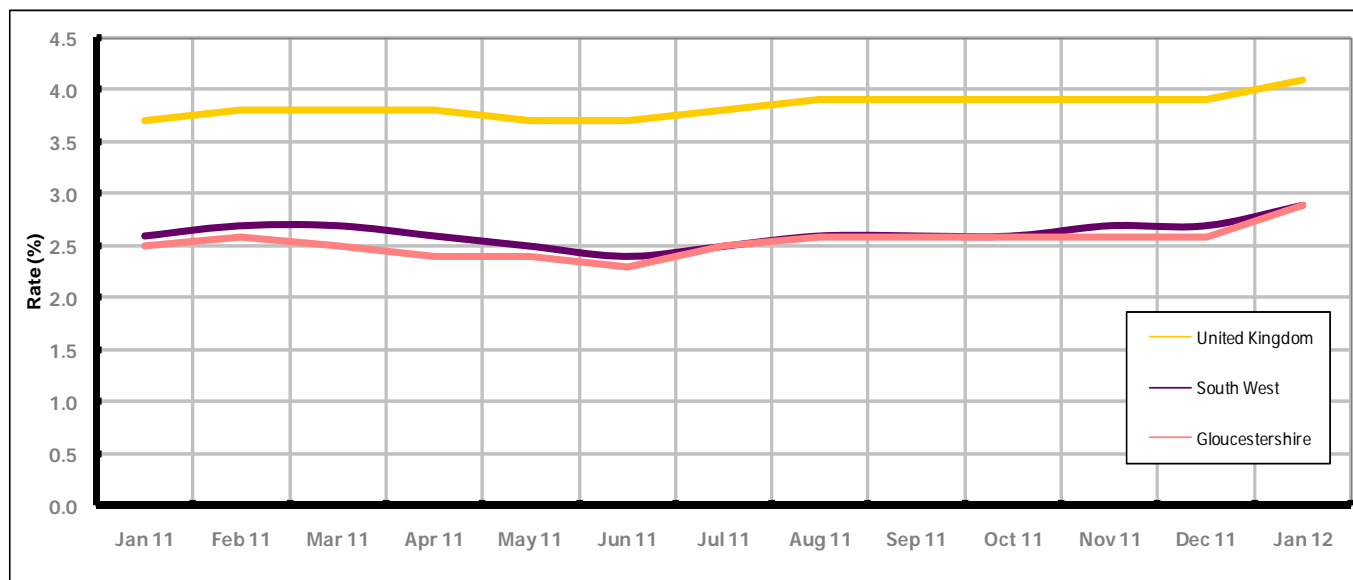


Figure 1 shows the claimant rate for Gloucestershire at 3.0% in February 2012. The rate has been lower or the same as the South West average over the past year and persistently lower by approximately 1.2% against the UK average during the same period. The February 2012 rate represents a 0.1% increase on January 2012.

Claimant Count

Table 1: Analysis of UK, South West and Gloucestershire Claimant Counts

Area	Claimant Count in February 2012	% change on January 2012	Average % change over the last six months	Consecutive months increasing
UK	1,685,989	+2.2%	+1.1%	2
South West	98,939	+3.0%	+2.0%	3
Gloucestershire	11,082	+3.9%	+2.0%	1

Table 1 shows that in February 2012, the number of claimants in Gloucestershire was +3.9% higher than the number in January 2012.

The average change in claimants in Gloucestershire for the six months to February 2012 was +2.0%. This is 0.9% higher than the UK average and the same as the South West average.

PART 3: LOCAL AUTHORITY DISTRICT ANALYSIS

Claimant Rate and Claimant Count

Figure 2: Claimant Rate (%) across Gloucestershire - February 2012

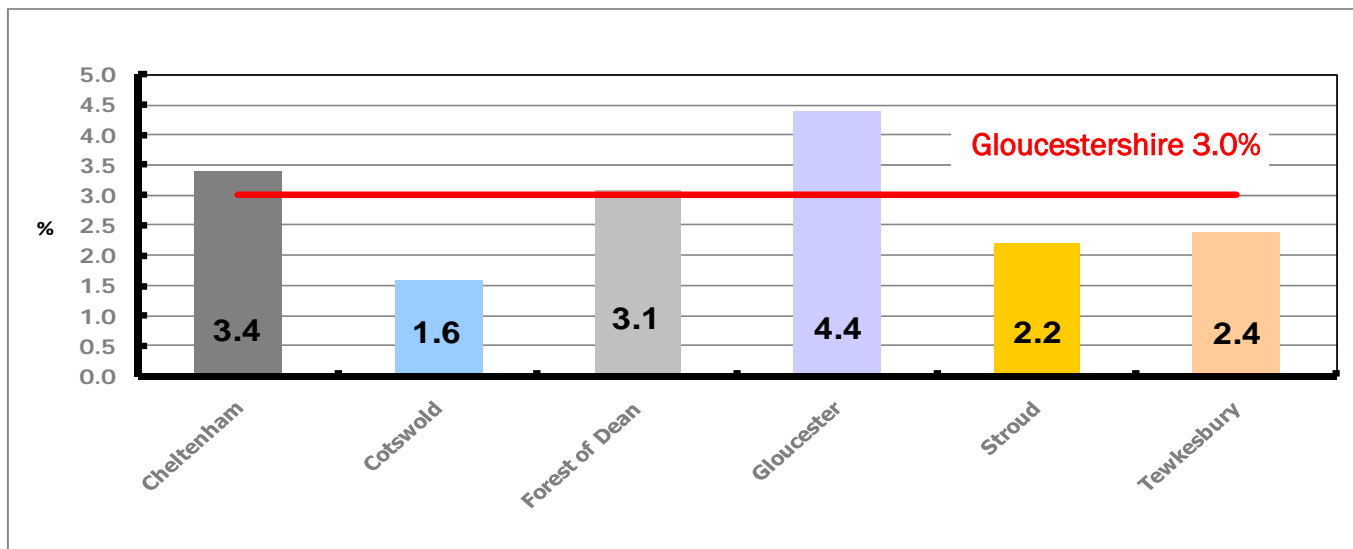


Figure 2 shows the claimant rate for February 2012 in Gloucestershire. Between January 2012 and February 2012 Cotswold and Stroud remained the same while all the other districts experienced an increase.

Figure 3: Total claimants over the past year across Gloucestershire Districts

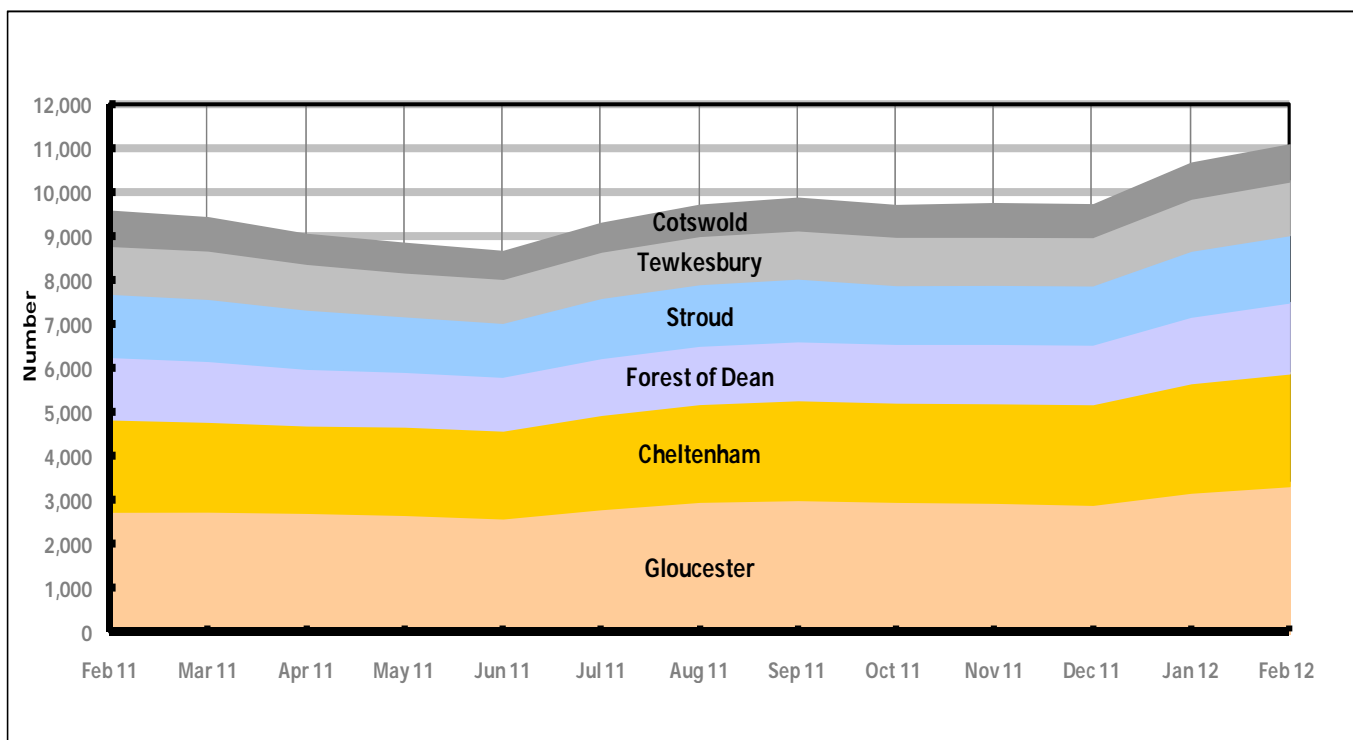


Figure 3 shows the overall claimant count by district over the past year. The number of claimants generally declined between February 2011 and June 2011. Since July 2011 the number of claimants have increased, with the exception of October and December when there was a decline.

Table 2: Analysis of Gloucestershire and District Claimant Counts

Total	Feb 12 Number	Feb 12 Rate	Jan 12 Number	Jan 12 Rate	Monthly change	% monthly change	Monthly change of rate
Gloucestershire	11,082	3.0	10,666	2.9	416	3.9%	0.1
Cheltenham	2,543	3.4	2,469	3.3	74	3.0%	0.1
Cotswold	830	1.6	804	1.6	26	3.2%	0.0
Forest of Dean	1,603	3.1	1,502	2.9	101	6.7%	0.2
Gloucester	3,346	4.4	3,199	4.2	147	4.6%	0.2
Stroud	1,538	2.2	1,507	2.2	31	2.1%	0.0
Tewkesbury	1,222	2.4	1,185	2.3	37	3.1%	0.1

Table 2 shows the change in the claimant count in February 2012 compared to January 2012. All districts experienced an increase in the number of claimants.

Table 3: Analysis of Male Gloucestershire and District Claimant Counts

Male	Feb 12 Number	Feb 12 Rate	Jan 12 Number	Jan 12 Rate	Monthly change	% monthly change	Monthly change of rate
Gloucestershire	7,499	4.0	7,185	3.9	314	4.4%	0.1
Cheltenham	1,771	4.7	1,692	4.5	79	4.7%	0.2
Cotswold	524	2.1	510	2.0	14	2.7%	0.1
Forest of Dean	1,081	4.2	1,022	4.0	59	5.8%	0.2
Gloucester	2,275	5.9	2,170	5.7	105	4.8%	0.2
Stroud	1,039	3.0	1,006	2.9	33	3.3%	0.1
Tewkesbury	809	3.2	785	3.2	24	3.1%	0.0

Table 3 shows the change in the male claimant count in February 2012 compared to January 2012. All districts experienced an increase in the number of male claimants.

Table 4: Analysis of Female Gloucestershire and District Claimant Counts

Female	Feb 12 Number	Feb 12 Rate	Jan 12 Number	Jan 12 Rate	Monthly change	% monthly change	Monthly change of rate
Gloucestershire	3,583	1.9	3,481	1.9	102	2.9%	0.0
Cheltenham	772	2.1	777	2.1	-5	-0.6%	0.0
Cotswold	306	1.2	294	1.2	12	4.1%	0.0
Forest of Dean	522	2.0	480	1.9	42	8.8%	0.1
Gloucester	1,071	2.8	1,029	2.7	42	4.1%	0.1
Stroud	499	1.4	501	1.4	-2	-0.4%	0.0
Tewkesbury	413	1.6	400	1.6	13	3.3%	0.0

Table 4 shows the change in the female claimant count in February 2012 compared to January 2012. Cheltenham and Stroud saw a slight decline in the number of female claimants while the remaining districts experienced an increase.

PART 4: LOCAL AUTHORITY DISTRICT AND WARD ANALYSIS

This section covers the six districts and a comparison of their constituent wards.

4.1 Cheltenham Borough

Claimant Rate and Claimant Count

Figure 4: Cheltenham Borough claimant rate over the last year

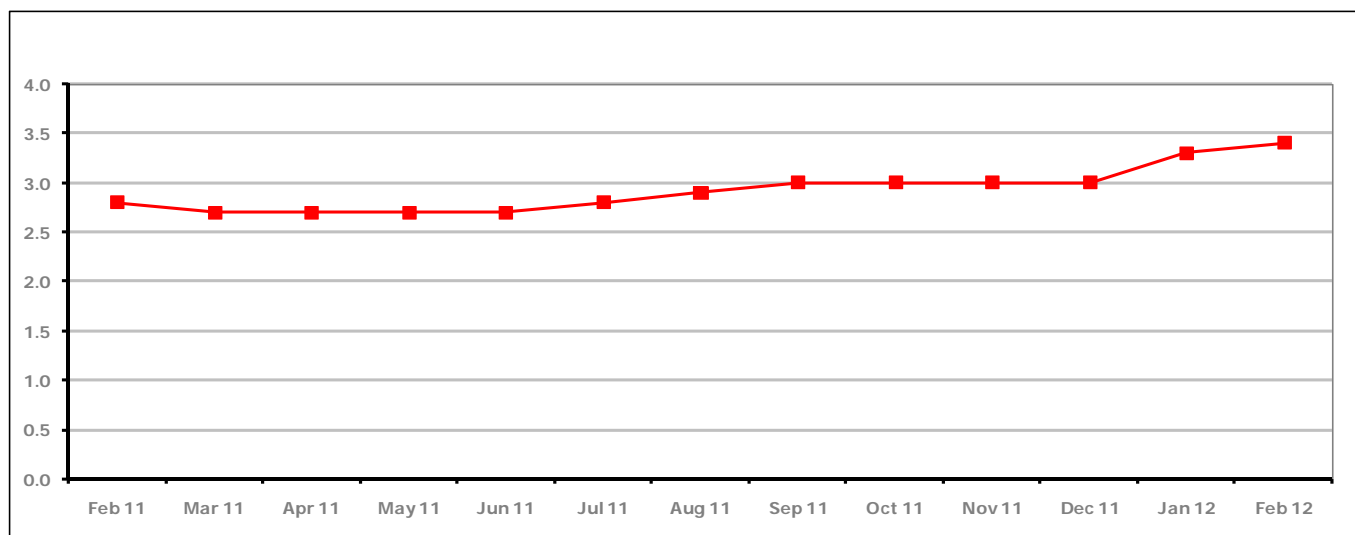


Figure 4 shows the claimant rate in Cheltenham increased in February 2012 to 3.4%.

Figure 5: Cheltenham Borough claimants - Month on Month and Year on Year change

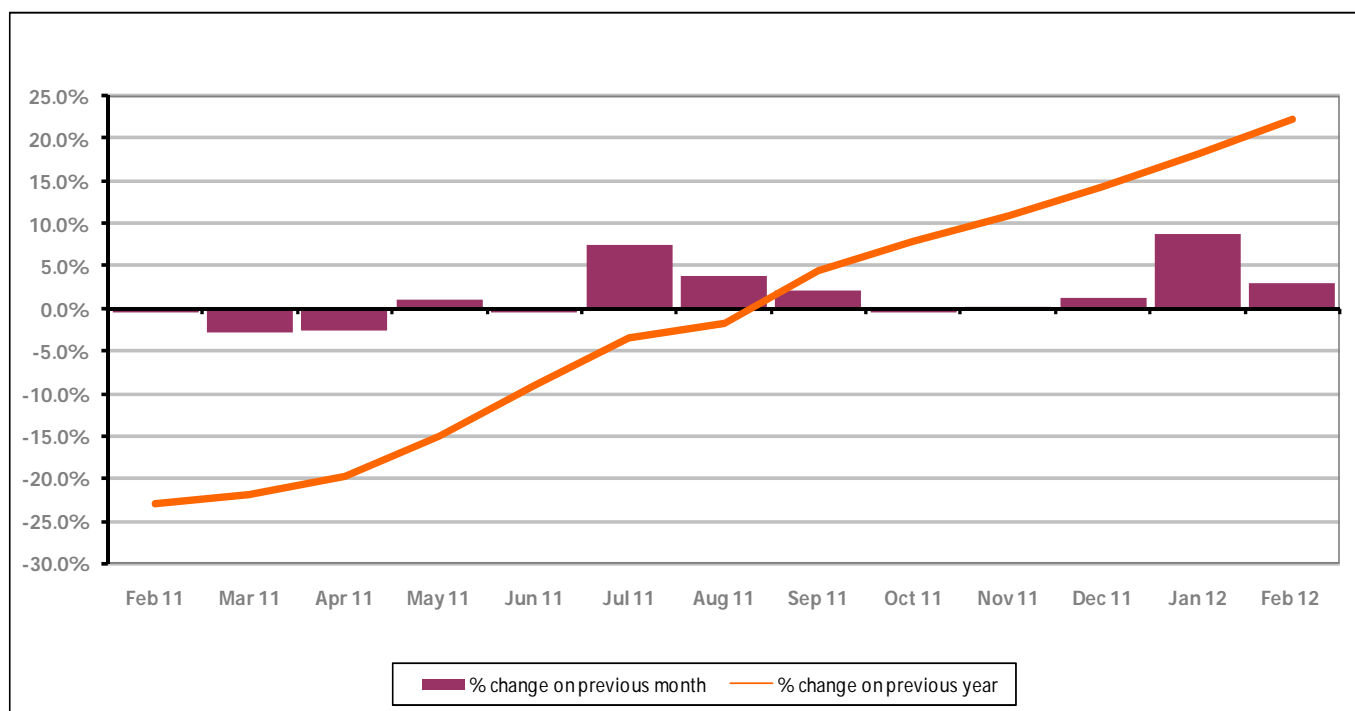


Figure 5 shows the claimant count increased by +3.0% since last month. The change on the previous year has increased in February 2012 compared to January 2012 to +22.4%.

PART 4: LOCAL AUTHORITY DISTRICT AND WARD ANALYSIS

4.1 Cheltenham Borough continued...

Figure 6: Claimant rates across Cheltenham Borough wards - February 2012

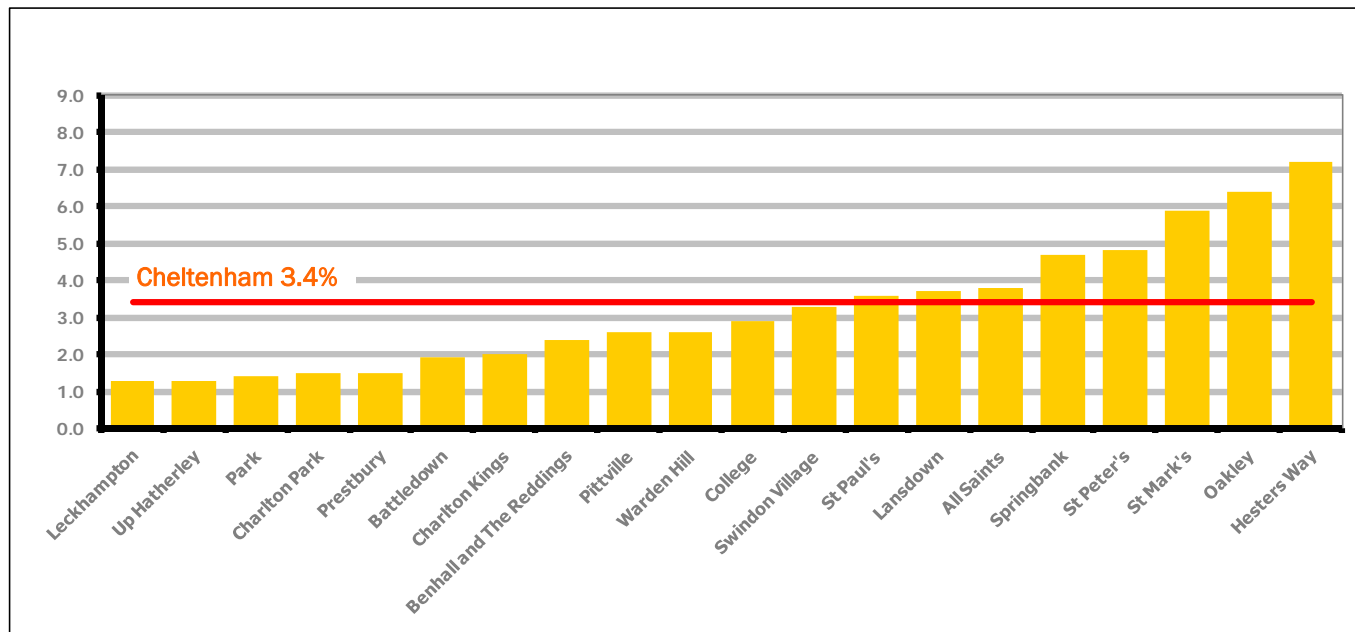
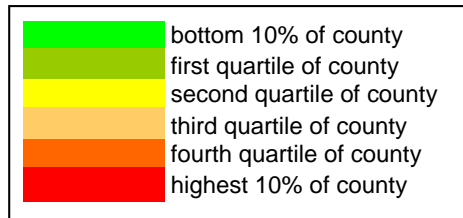


Figure 6 shows the claimant rates for Cheltenham Borough wards. The red line represents the average claimant rate across the Borough of 3.4%. Eight wards lie above the average.

Table 5: Analysis of Claimant Count at Cheltenham Borough ward level - February 2012

District	Ward	Rate	Rank*
Cheltenham	Leckhampton	1.3	26
Cheltenham	Up Hatherley	1.3	26
Cheltenham	Park	1.4	33
Cheltenham	Charlton Park	1.5	40
Cheltenham	Prestbury	1.5	40
Cheltenham	Battledown	1.9	61
Cheltenham	Charlton Kings	2.0	68
Cheltenham	Benhall and The Reddings	2.4	85
Cheltenham	Pittville	2.6	90
Cheltenham	Warden Hill	2.6	90
Cheltenham	College	2.9	97
Cheltenham	Swindon Village	3.3	109
Cheltenham	St Paul's	3.6	116
Cheltenham	Lansdown	3.7	118
Cheltenham	All Saints	3.8	121
Cheltenham	Springbank	4.7	125
Cheltenham	St Peter's	4.8	126
Cheltenham	St Mark's	5.9	134
Cheltenham	Oakley	6.4	137
Cheltenham	Hesters Way	7.2	140



* 1 = "best" and 142 = "worst"

Table 5 shows overall claimant rates for Cheltenham Borough wards and their position relative to all wards in Gloucestershire.

PART 4: LOCAL AUTHORITY DISTRICT AND WARD ANALYSIS

4.2 Cotswold District

Claimant Rate and Claimant Count

Figure 7: Cotswold District claimant rate over the last year

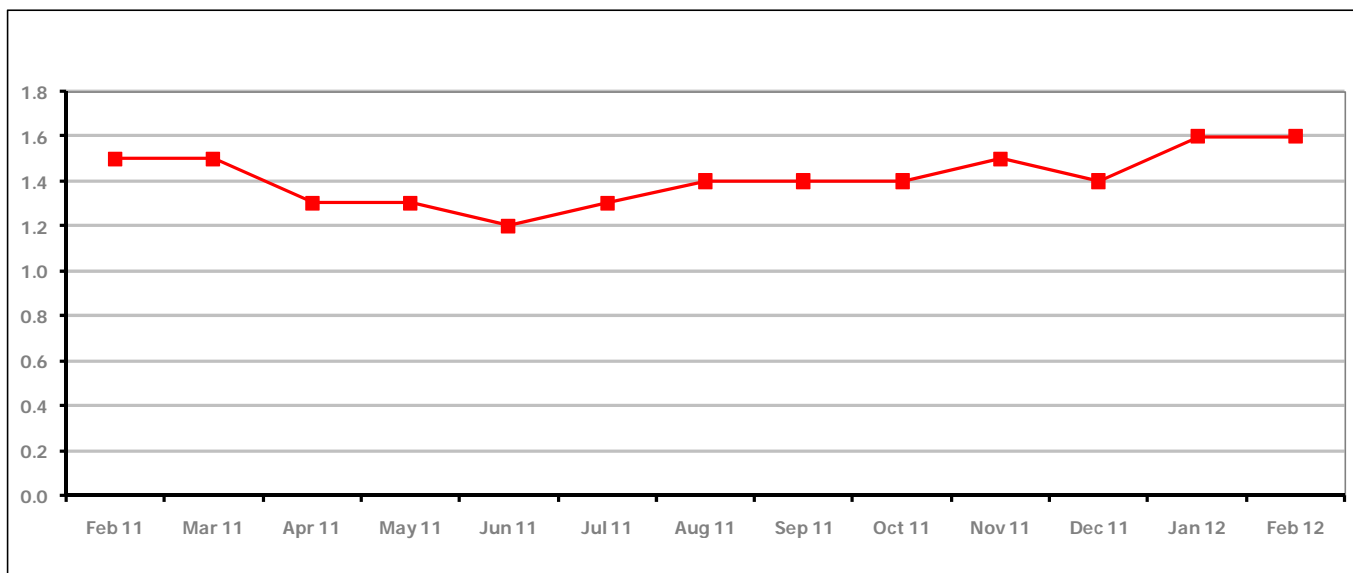


Figure 7 shows the claimant rate in Cotswold District remained the same as last month at 1.6%.

Figure 8: Cotswold District claimants - Month on Month and Year on Year change

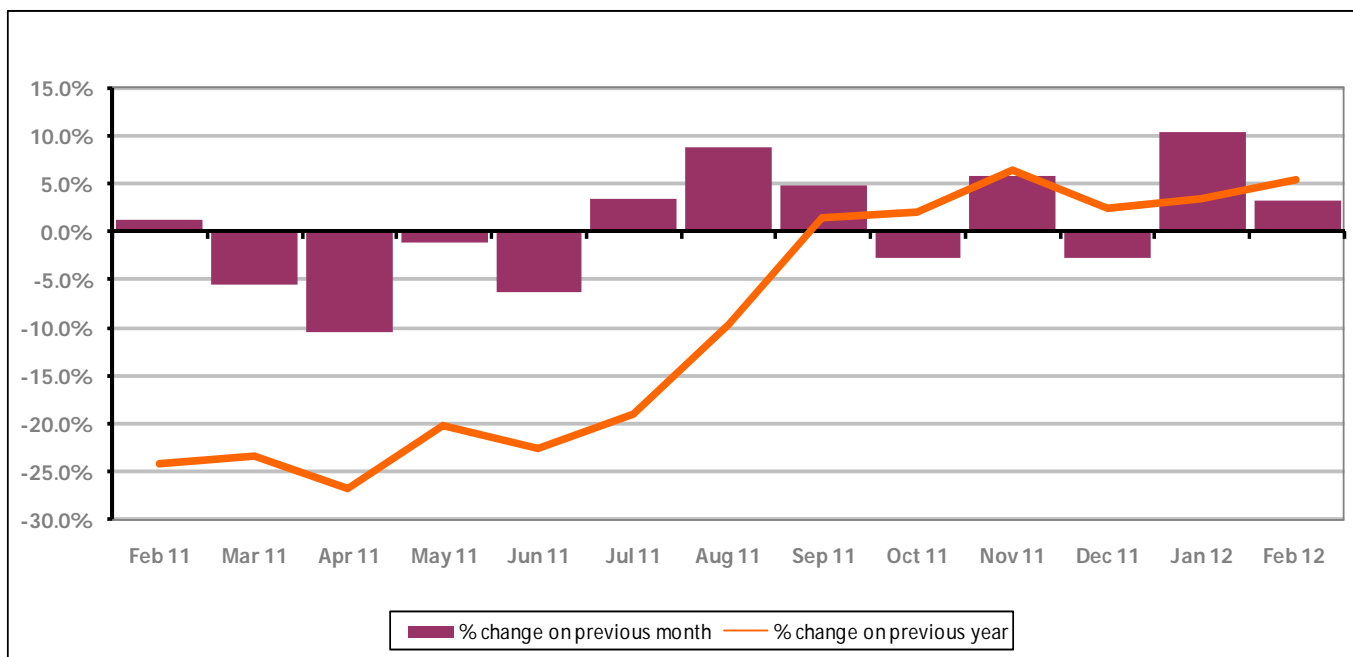


Figure 8 shows the claimant count increased by +3.2% since January 2012. The change on the previous year has increased from January 2012 compared to February 2012 to +5.5%.

PART 4: LOCAL AUTHORITY DISTRICT AND WARD ANALYSIS

4.2 Cotswold District continued...

Figure 9: Claimant rates across Cotswold District wards - February 2012

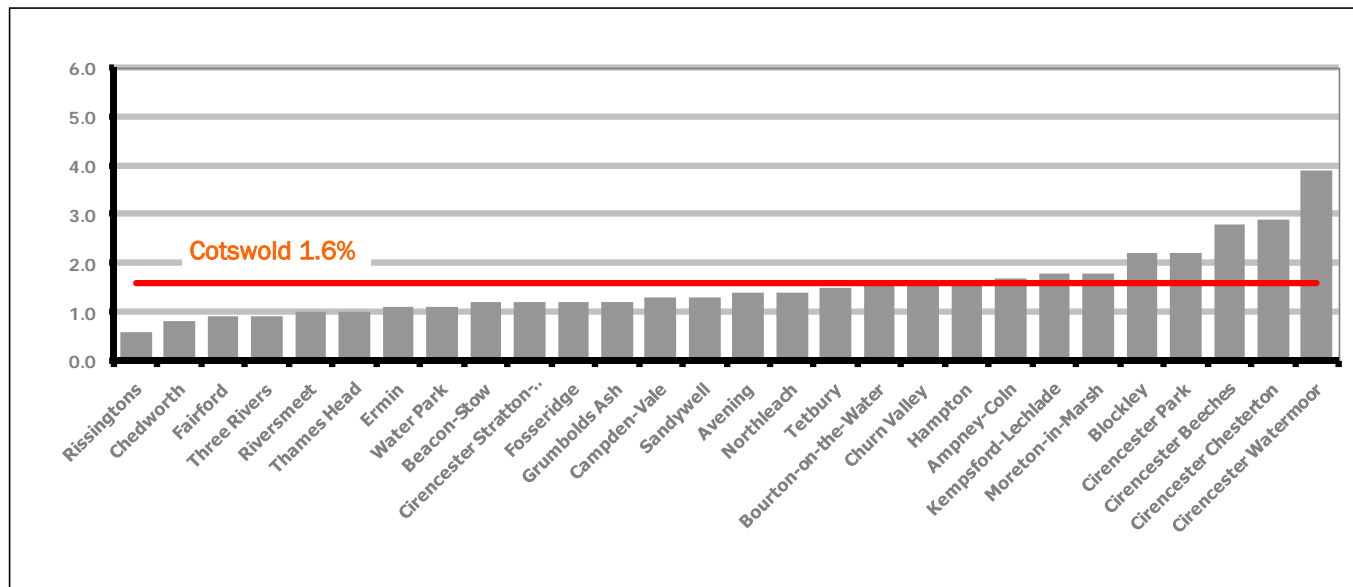
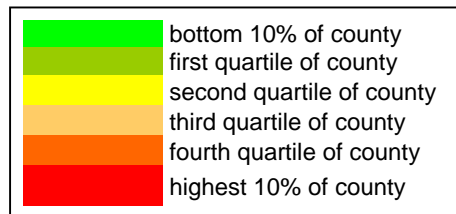


Figure 9 shows the claimant rates for Cotswold District wards. The red line represents the average claimant rate across the District of 1.6%. Eight wards lie above the average.

Table 6: Analysis of Claimant Count at Cotswold District ward level - February 2012

District	Ward	Rate	Rank*
Cotswolds	Rissingtons	0.6	3
Cotswolds	Chedworth	0.8	5
Cotswolds	Fairford	0.9	6
Cotswolds	Three Rivers	0.9	6
Cotswolds	Riversmeet	1.0	10
Cotswolds	Thames Head	1.0	10
Cotswolds	Ermin	1.1	15
Cotswolds	Water Park	1.1	15
Cotswolds	Beacon-Stow	1.2	18
Cotswolds	Cirencester Stratton-Whiteway	1.2	18
Cotswolds	Fosseridge	1.2	18
Cotswolds	Grumbolds Ash	1.2	18
Cotswolds	Campden-Vale	1.3	26
Cotswolds	Sandywell	1.3	26
Cotswolds	Avening	1.4	33
Cotswolds	Northleach	1.4	33
Cotswolds	Tetbury	1.5	40
Cotswolds	Bourton-on-the-Water	1.6	45
Cotswolds	Churn Valley	1.6	45
Cotswolds	Hampton	1.6	45
Cotswolds	Ampney-Coln	1.7	54
Cotswolds	Kempsford-Lechlade	1.8	58
Cotswolds	Moreton-in-Marsh	1.8	58
Cotswolds	Blockley	2.2	76
Cotswolds	Cirencester Park	2.2	76
Cotswolds	Cirencester Beeches	2.8	95
Cotswolds	Cirencester Chesterton	2.9	97
Cotswolds	Cirencester Watermoor	3.9	122



* 1 = "best" and 142 = "worst"

Table 6 shows overall claimant rates for Cotswold District wards and their position relative to all wards in Gloucestershire.

PART 4: LOCAL AUTHORITY DISTRICT AND WARD ANALYSIS

4.3 Forest of Dean District

Claimant Rate and Claimant Count

Figure 10: Forest of Dean District claimant rate over the last year

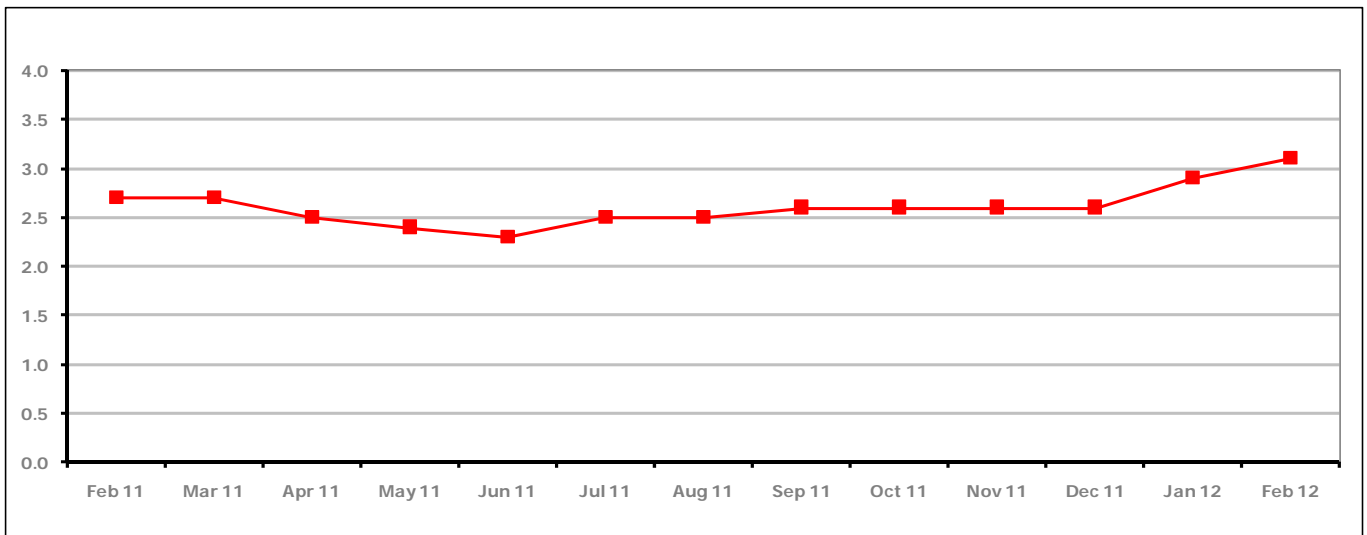


Figure 10 shows the claimant rate in the Forest of Dean increased in February 2012 to 3.1%.

Figure 11: Forest of Dean District claimants - Month on Month and Year on Year change

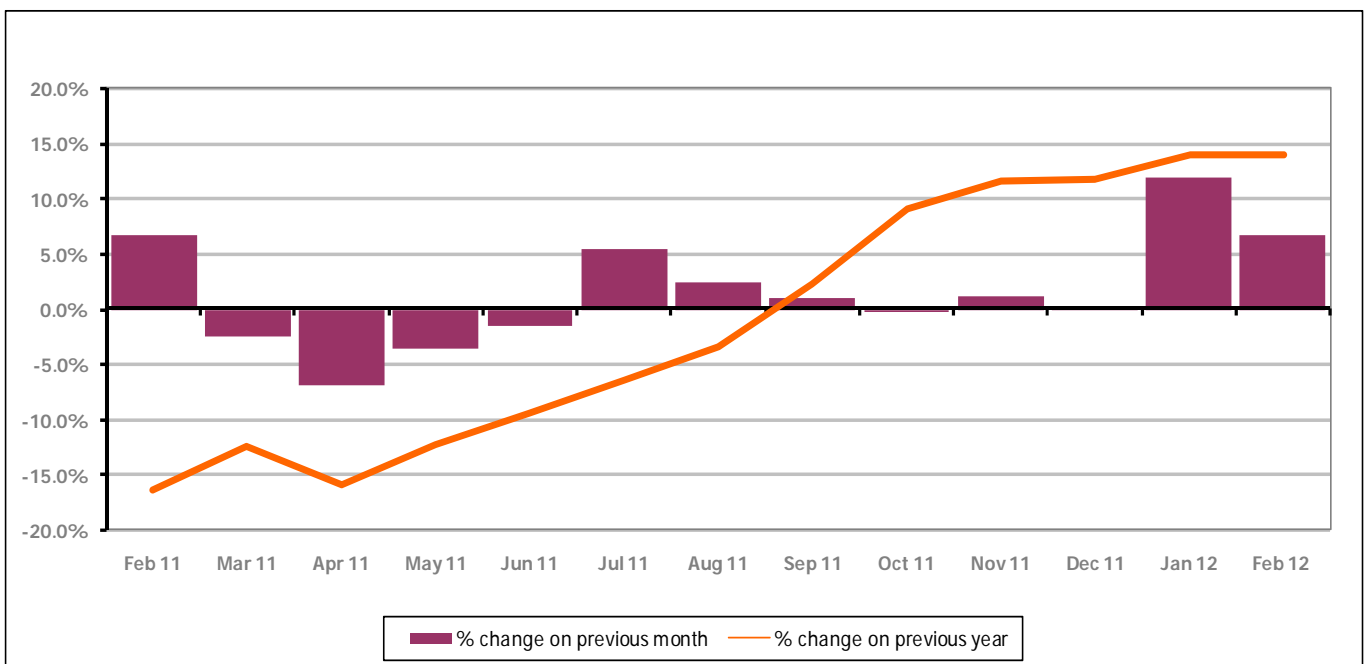


Figure 11 shows the claimant count increased by +6.7% since January 2012. The change on the previous year was the same as January 2012 at +14.0%.

PART 4: LOCAL AUTHORITY DISTRICT AND WARD ANALYSIS

4.3 Forest of Dean District continued...

Figure 12: Claimant rates across Forest of Dean District wards - February 2012

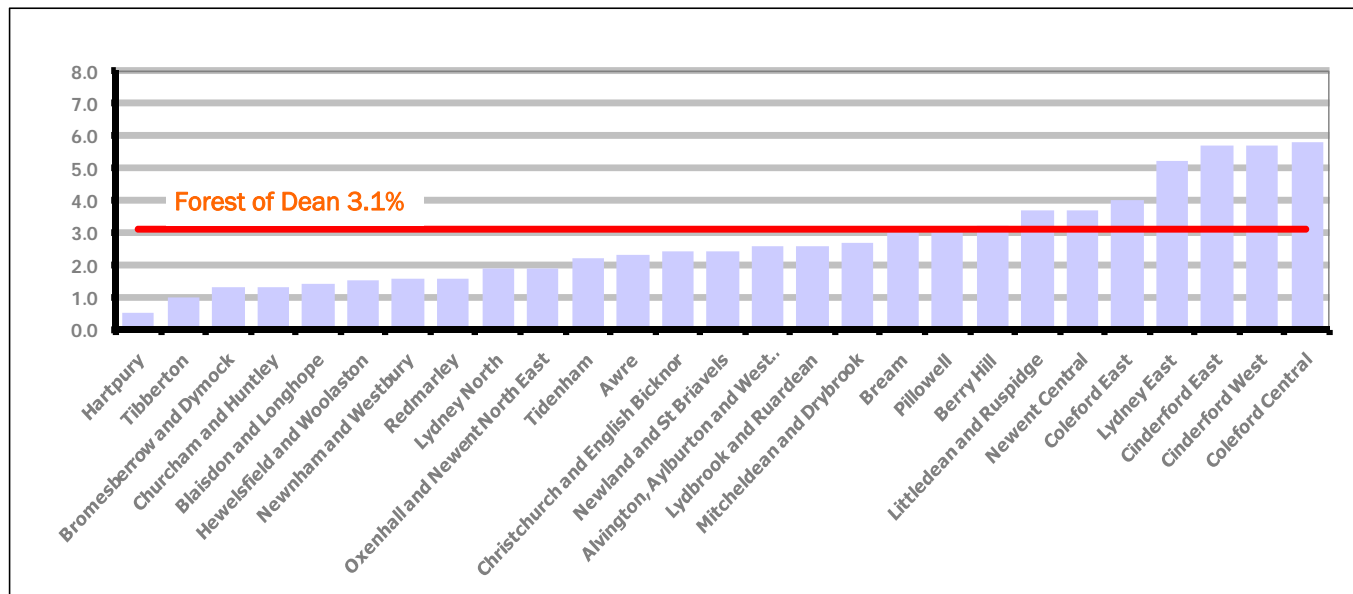
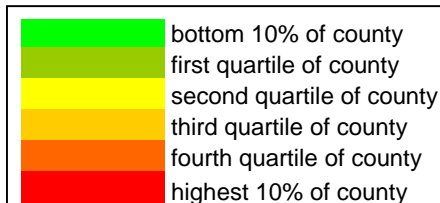


Figure 12 shows the claimant rates for Forest of Dean District wards. The red line represents the average claimant rate across the District of 3.1 %. Eight wards lie above the average.

Table 7: Analysis of Claimant Count at Forest of Dean District ward level - February 2012

District	Ward	Rate	Rank*
Forest	Hartpur	0.5	1
Forest	Tibberton	1.0	10
Forest	Bromesberrow and Dymock	1.3	26
Forest	Churcham and Huntley	1.3	26
Forest	Blaisdon and Longhope	1.4	33
Forest	Hewelsfield and Woolaston	1.5	40
Forest	Newnham and Westbury	1.6	45
Forest	Redmarley	1.6	45
Forest	Lydney North	1.9	61
Forest	Oxenhall and Newent North East	1.9	61
Forest	Tidenham	2.2	76
Forest	Awre	2.3	83
Forest	Christchurch and English Bicknor	2.4	85
Forest	Newland and St Briavels	2.4	85
Forest	Alvington, Aylburton and West Lydney	2.6	90
Forest	Lydbrook and Ruardean	2.6	90
Forest	Mitcheldean and Drybrook	2.7	94
Forest	Bream	3.0	102
Forest	Pillowell	3.0	102
Forest	Berry Hill	3.2	107
Forest	Littledean and Ruspidge	3.7	118
Forest	Newent Central	3.7	118
Forest	Coleford East	4.0	123
Forest	Lydney East	5.2	127
Forest	Cinderford East	5.7	130
Forest	Cinderford West	5.7	130
Forest	Coleford Central	5.8	132



* 1 = "best" and 142 = "worst"

Table 7 shows overall claimant rates for the Forest of Dean District wards and their position relative to all wards in Gloucestershire.

PART 4: LOCAL AUTHORITY DISTRICT AND WARD ANALYSIS

4.4 Gloucester City

Claimant Rate and Claimant Count

Figure 13: Gloucester City claimant rate over the last year

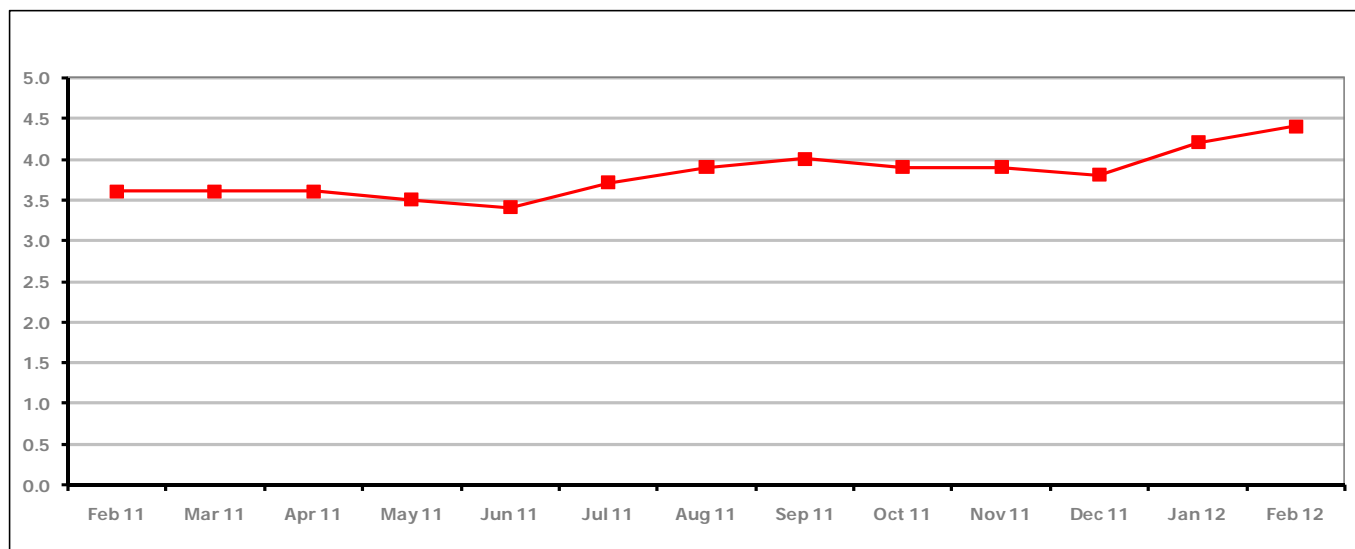


Figure 13 shows the claimant rate for Gloucester City increased in February 2012 to 4.4%.

Figure 14: Gloucester City claimants - Month on Month and Year on Year change

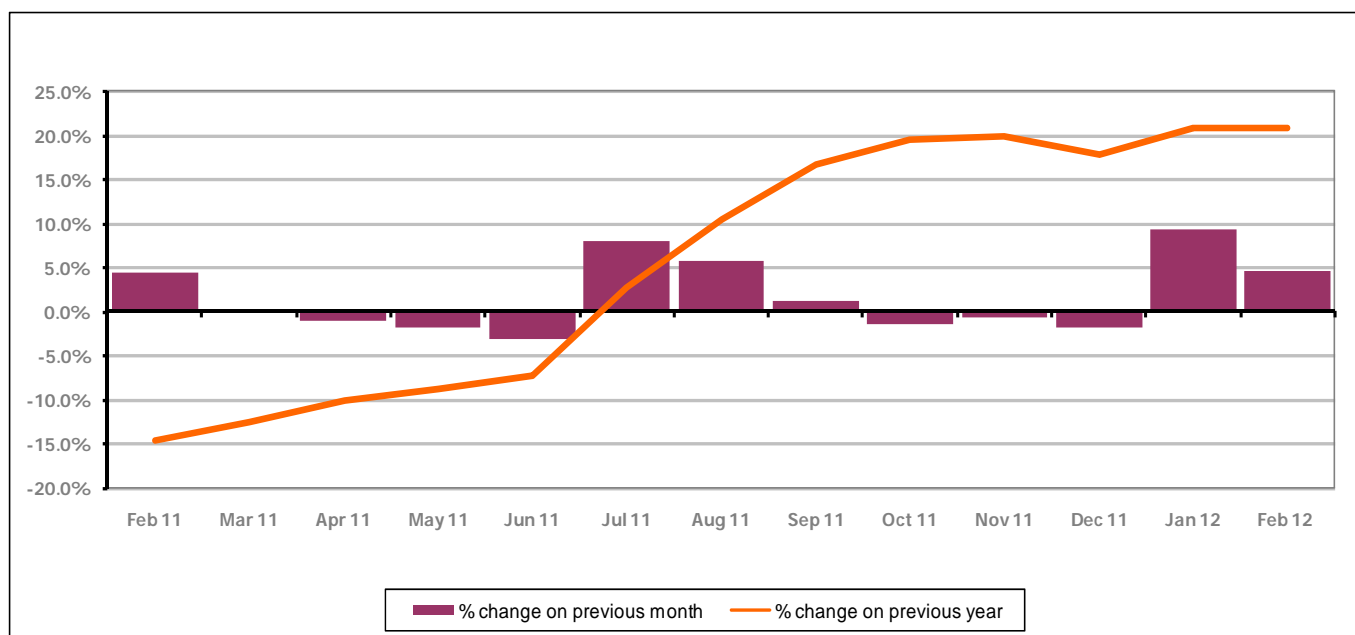


Figure 14 shows the monthly claimant count increased by +4.6% since January 2012. The change on the previous year was the same as January 2012 at +20.8%.

PART 4: LOCAL AUTHORITY DISTRICT AND WARD ANALYSIS

4.4 Gloucester City continued...

Figure 15: Claimant rates across Gloucester City wards - February 2012

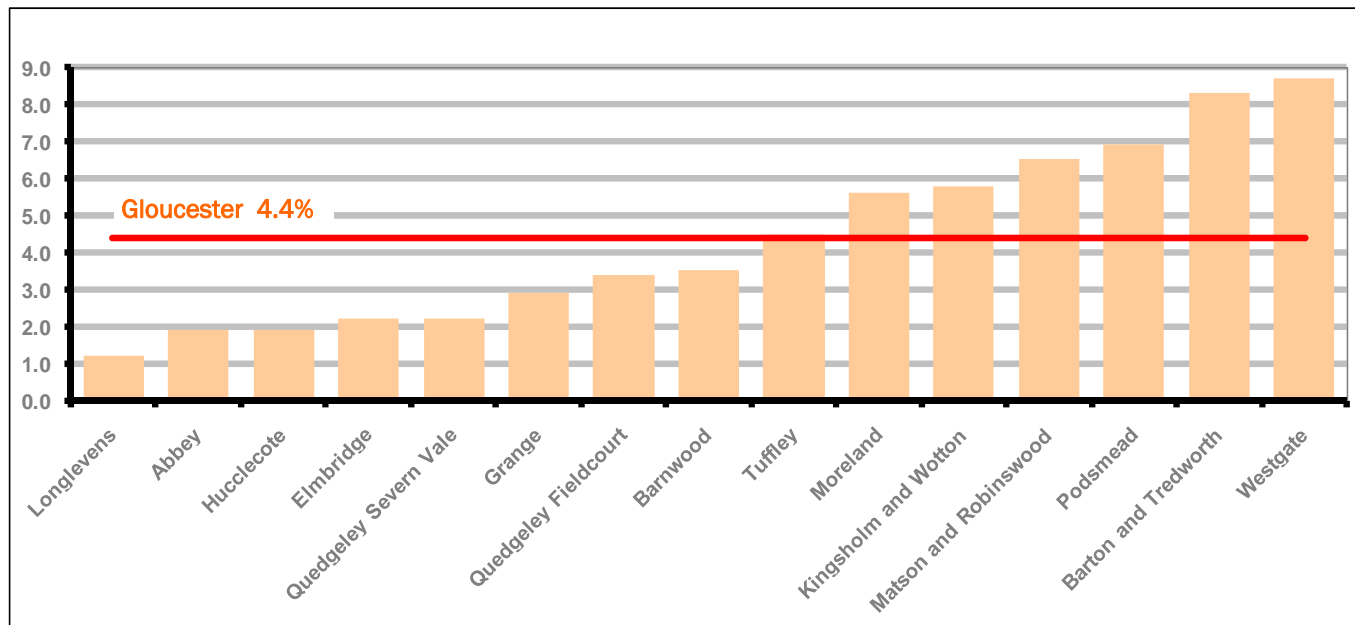
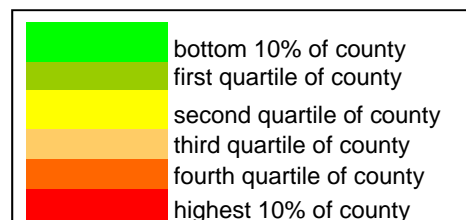


Figure 15 shows the claimant rates for Gloucester City district wards. The red line represents the average claimant rate across the City of 4.4%. Seven wards lie above the average.

Table 8: Analysis of Claimant Count at Gloucester City ward level - February 2012

District	Ward	Rate	Rank*
Gloucester	Longlevens	1.2	18
Gloucester	Abbey	1.9	61
Gloucester	Hucclecote	1.9	61
Gloucester	Elmbridge	2.2	76
Gloucester	Quedgeley Severn Vale	2.2	76
Gloucester	Grange	2.9	97
Gloucester	Quedgeley Fieldcourt	3.4	112
Gloucester	Barnwood	3.5	114
Gloucester	Tuffley	4.5	124
Gloucester	Moreland	5.6	129
Gloucester	Kingsholm and Wotton	5.8	132
Gloucester	Matson and Robinswood	6.5	138
Gloucester	Podsmead	6.9	139
Gloucester	Barton and Tredworth	8.3	141
Gloucester	Westgate	8.7	142



* 1 = "best" and 142 = "worst"

Table 8 shows overall claimant rates for Gloucester City wards and their position relative to all wards in Gloucestershire.

PART 4: LOCAL AUTHORITY DISTRICT AND WARD ANALYSIS

4.5 Stroud District

Claimant Rate and Claimant Count

Figure 16: Stroud District claimant rate over the last year

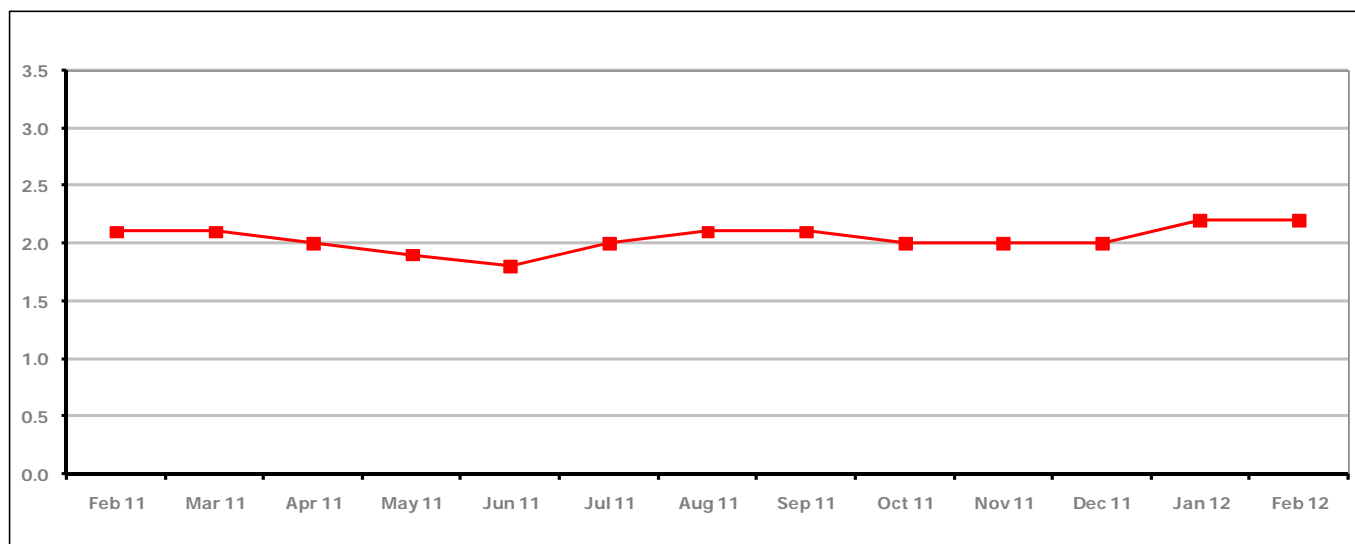


Figure 16 shows the claimant rate for Stroud District remained the same as January 2012 at 2.2%.

Figure 17: Stroud District claimants - Month on Month and Year on Year change

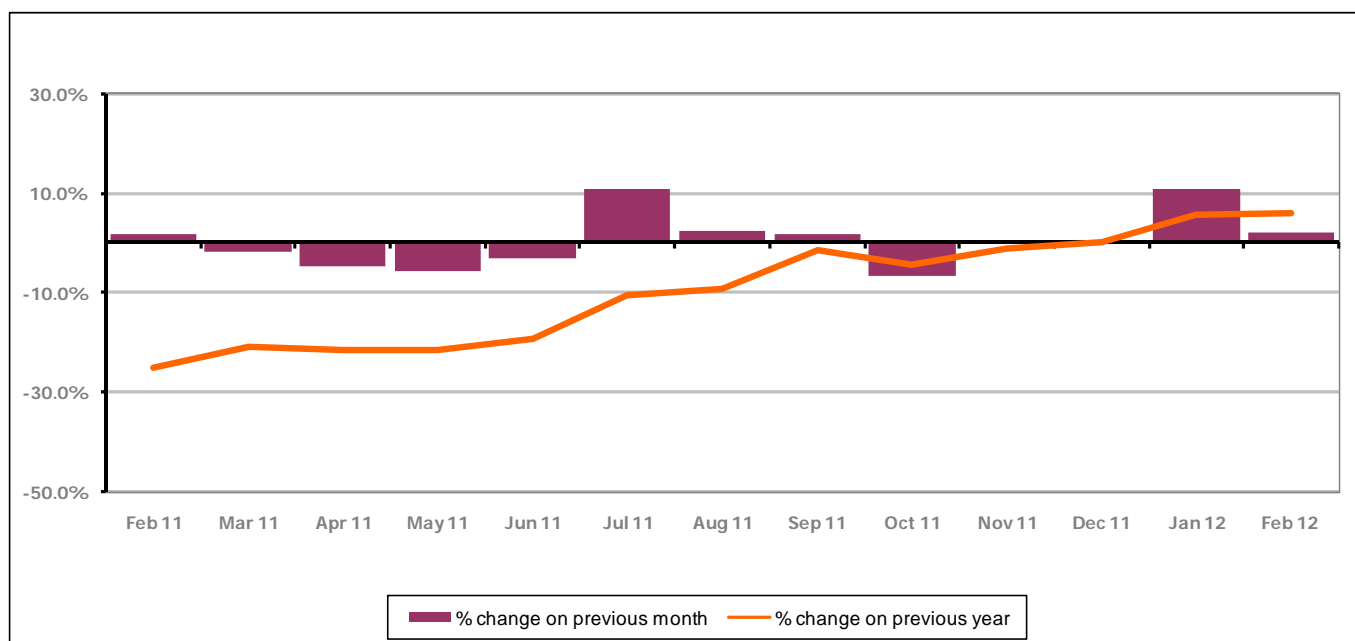


Figure 17 shows the monthly claimant count increased by +2.1% since January 2012. The change on the previous year has increased between January 2012 and February 2012 to +5.8%.

PART 4: LOCAL AUTHORITY AND DISTRICT ANALYSIS

4.5 Stroud District continued...

Figure 18: Claimant rates across Stroud District wards - February 2012

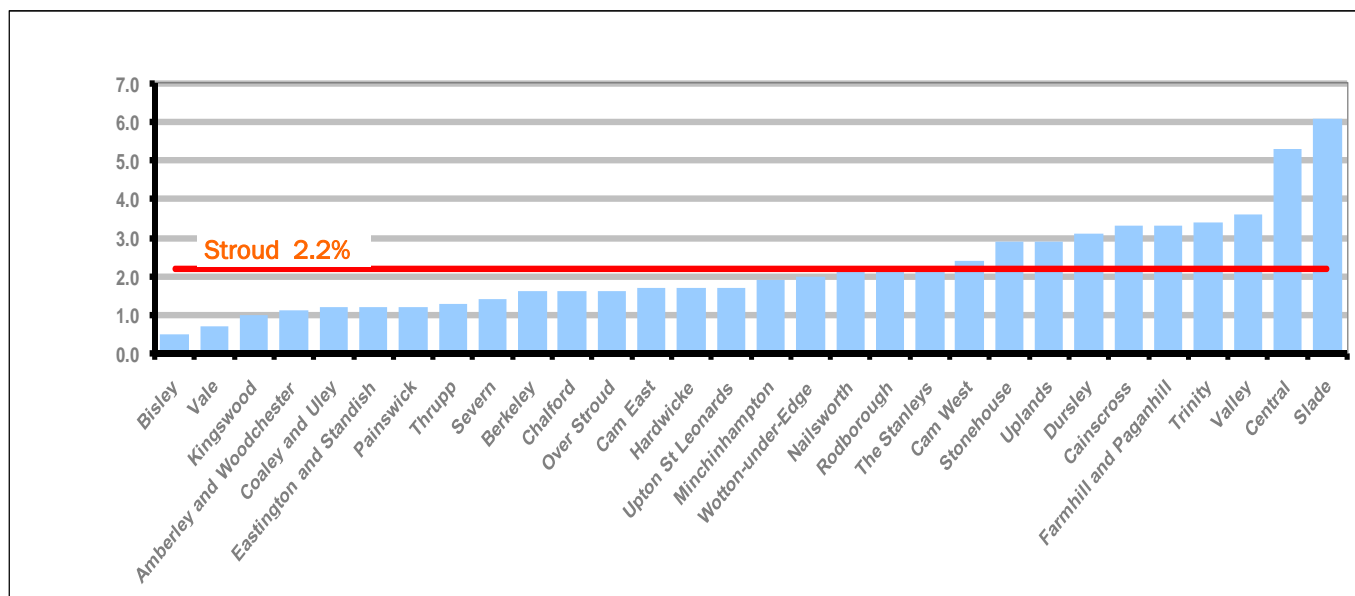
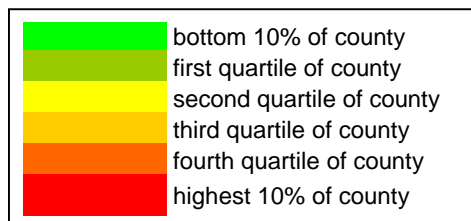


Figure 18 shows the claimant rates in Stroud District wards. The red line represents the average claimant rate across the District of 2.2%. Ten wards are above the average.

Table 9: Analysis of Claimant Count at Stroud District ward level - February 2012

District	Ward	Rate	Rank*
Stroud	Bisley	0.5	1
Stroud	Vale	0.7	4
Stroud	Kingswood	1.0	10
Stroud	Amberley and Woodchester	1.1	15
Stroud	Coaley and Uley	1.2	18
Stroud	Eastington and Standish	1.2	18
Stroud	Painswick	1.2	18
Stroud	Thrupp	1.3	26
Stroud	Severn	1.4	33
Stroud	Berkeley	1.6	45
Stroud	Chalford	1.6	45
Stroud	Over Stroud	1.6	45
Stroud	Cam East	1.7	54
Stroud	Hardwicke	1.7	54
Stroud	Upton St Leonards	1.7	54
Stroud	Minchinhampton	1.9	61
Stroud	Wotton-under-Edge	2.0	68
Stroud	Nailsworth	2.1	72
Stroud	Rodborough	2.1	72
Stroud	The Stanleys	2.1	72
Stroud	Cam West	2.4	85
Stroud	Stonehouse	2.9	97
Stroud	Uplands	2.9	97
Stroud	Dursley	3.1	106
Stroud	Cainscross	3.3	109
Stroud	Farmhill and Paganhill	3.3	109
Stroud	Trinity	3.4	112
Stroud	Valley	3.6	116
Stroud	Central	5.3	128
Stroud	Slade	6.1	135



* 1 = "best" and 142 = "worst"

Table 9 shows overall claimant rates for Stroud District wards and their position relative to all wards in Gloucestershire.

PART 4: LOCAL AUTHORITY DISTRICT AND WARD ANALYSIS

4.6 Tewkesbury District

Claimant Rate and Claimant Count

Figure 19: Tewkesbury District claimant rate over the last year

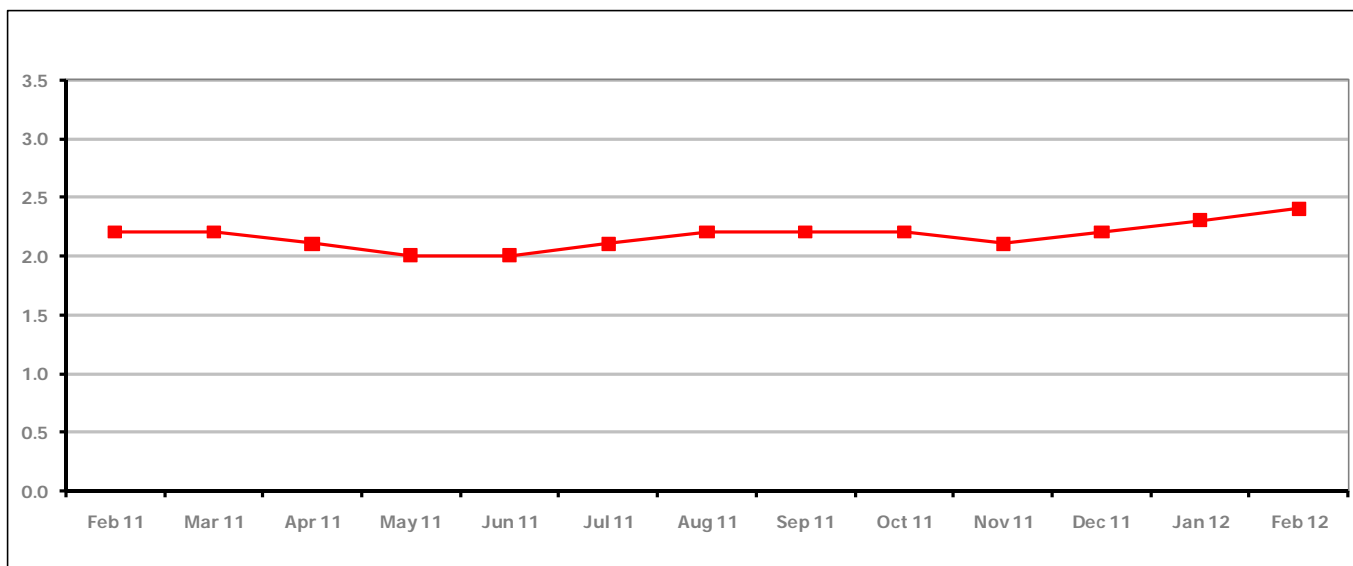


Figure 19 shows the claimant rate for Tewkesbury District increased in February 2012 to 2.4%.

Figure 20: Tewkesbury District claimants - Month on Month and Year on Year change

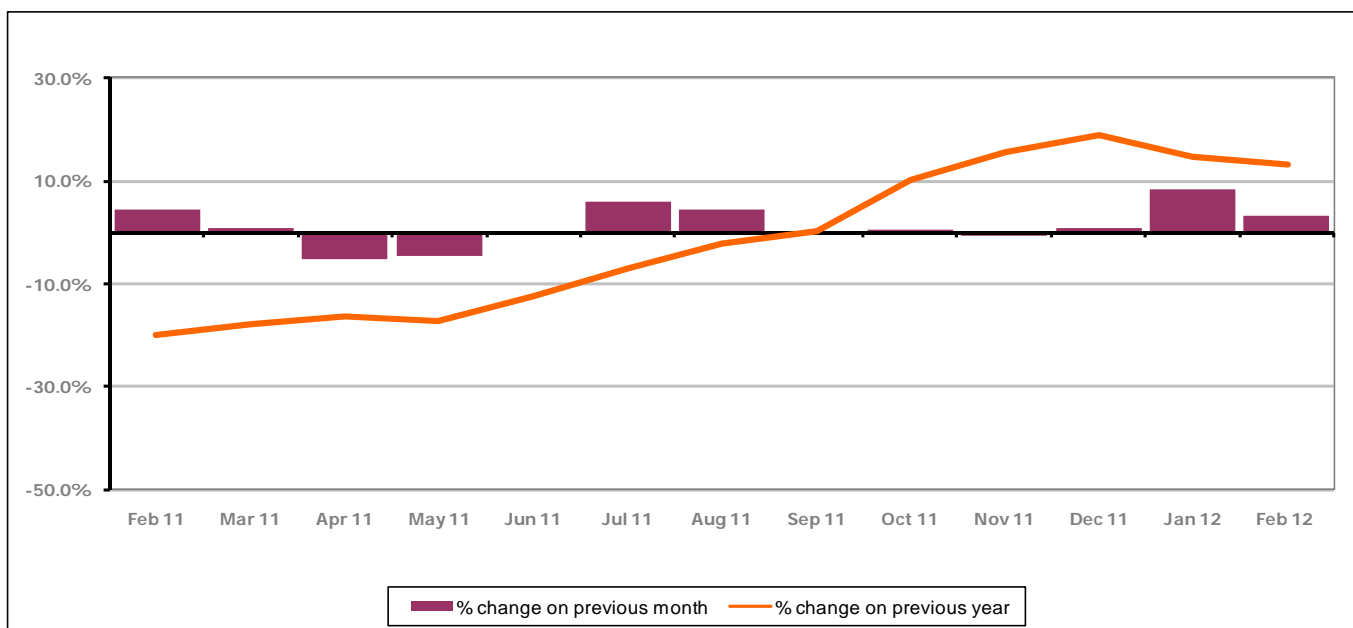


Figure 20 shows that the monthly claimant count increased in February 2012 by +3.1%. The change on the previous year decreased between January 2012 and February 2012 to +13.1%.

PART 4: LOCAL AUTHORITY AND DISTRICT ANALYSIS

4.6 Tewkesbury District continued...

Figure 21: Claimant rates across Tewkesbury District wards - February 2012

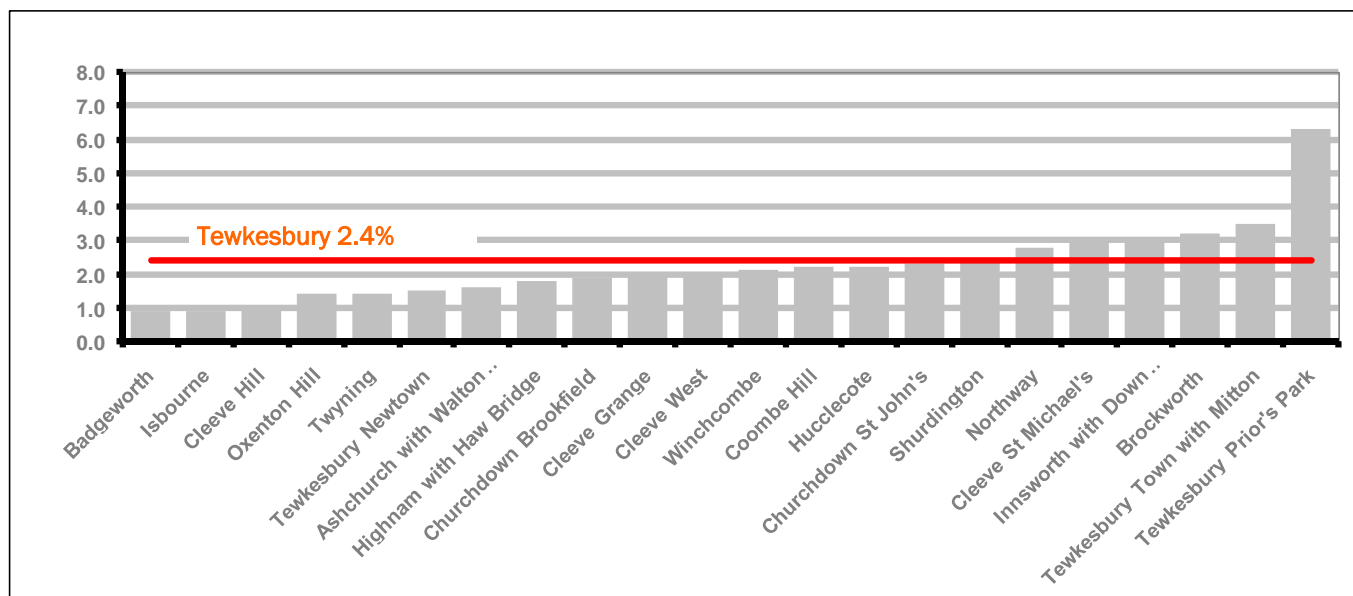
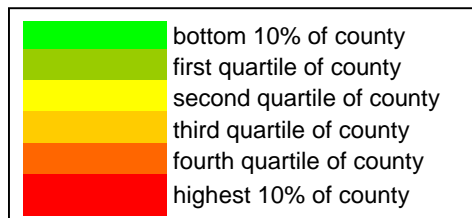


Figure 21 shows the claimant rates in Tewkesbury District wards. The red line represents the average claimant rate across the District of 2.4% and six wards are above the average.

Table 10: Analysis of Claimant Count at Tewkesbury District level - February 2012

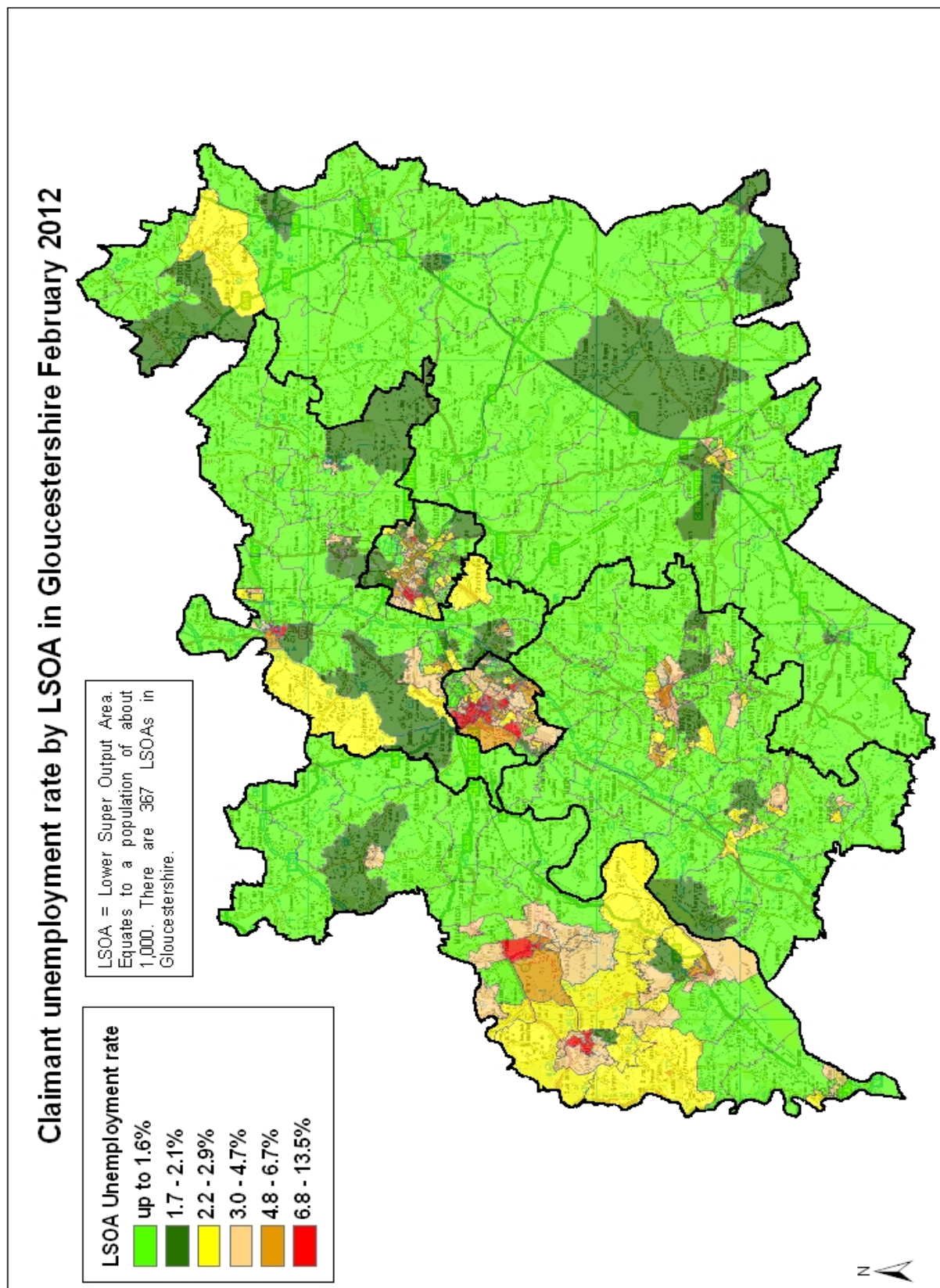
District	Ward	Rate	Rank*
Tewkesbury	Badgeworth	0.9	6
Tewkesbury	Isbourne	0.9	6
Tewkesbury	Cleeve Hill	1.0	10
Tewkesbury	Oxenton Hill	1.4	33
Tewkesbury	Twynning	1.4	33
Tewkesbury	Tewkesbury Newtown	1.5	40
Tewkesbury	Ashchurch with Walton Cardiff	1.6	45
Tewkesbury	Highnam with Haw Bridge	1.8	58
Tewkesbury	Churchdown Brookfield	1.9	61
Tewkesbury	Cleeve Grange	2.0	68
Tewkesbury	Cleeve West	2.0	68
Tewkesbury	Winchcombe	2.1	72
Tewkesbury	Coombe Hill	2.2	76
Tewkesbury	Hucclecote	2.2	76
Tewkesbury	Churchdown St John's	2.3	83
Tewkesbury	Shurdington	2.4	85
Tewkesbury	Northway	2.8	95
Tewkesbury	Cleeve St Michael's	3.0	102
Tewkesbury	Innsworth with Down Hatherley	3.0	102
Tewkesbury	Brockworth	3.2	107
Tewkesbury	Tewkesbury Town with Mitton	3.5	114
Tewkesbury	Tewkesbury Prior's Park	6.3	136



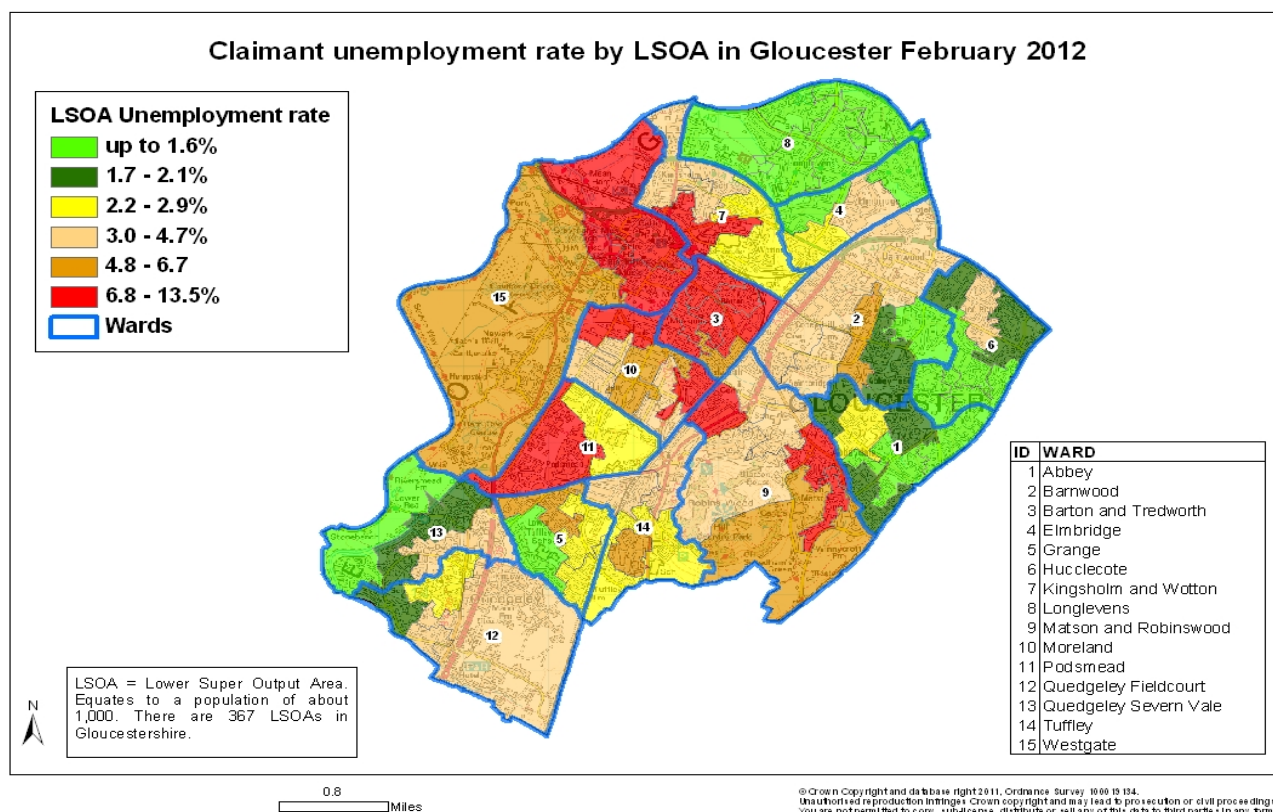
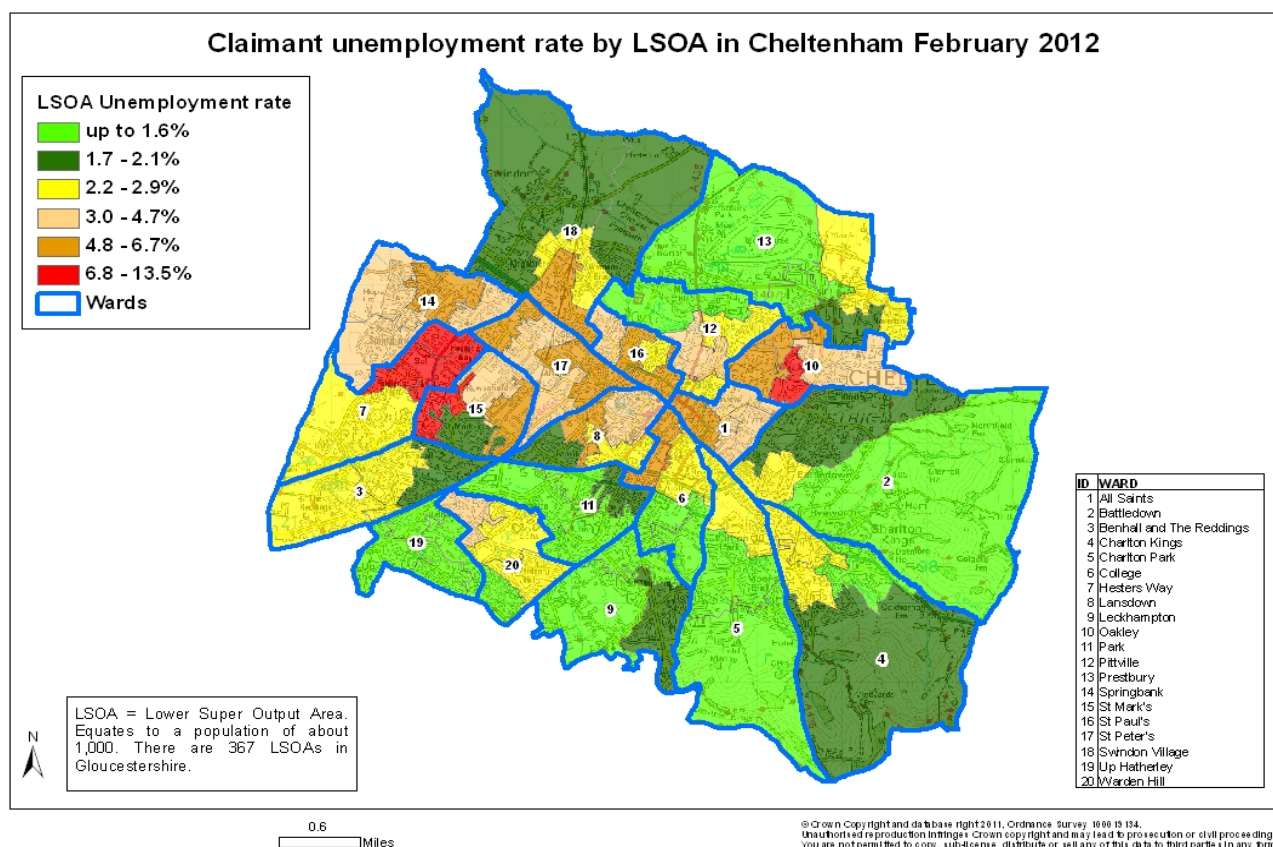
* 1 = "best" and 142 = "worst"

Table 10 shows overall claimant rates for Tewkesbury District wards and their position relative to all wards in Gloucestershire.

PART 5: MAP SHOWING DISTRIBUTION OF CLAIMANT RATE ACROSS GLOUCESTERSHIRE



PART 5: MAP SHOWING DISTRIBUTION OF CLAIMANT RATE ACROSS GLOUCESTERSHIRE



PART 6: YOUNG PEOPLE NOT IN EDUCATION, EMPLOYMENT OR TRAINING (NEET) IN GLOUCESTERSHIRE

Data provided by Prospects, the Connexions service in Gloucestershire on the situation of young people (16-18) in Gloucestershire who are not in education, employment or formal training.

Connexions Gloucestershire is required to report performance with the 16-18 age range against nationally defined criteria for counting the NEET group. The NEET group includes young people actively seeking education, employment or training as well as those young people who are either not yet ready or who are unable to access these opportunities because of their personal circumstances. The figures quoted below include young people in both of these categories.

Summary

As at the end of February 2012 there were 708 young people aged 16-18 not in education, employment or training in Gloucestershire and this figure translates into an adjusted (*) 16-18 NEET population of 4.8%. The total number of NEET decreased by 33 young people in February 2012 compared to January 2012. 5 districts saw a decrease in their NEET figure, 1 saw an increase.

Total NEET Group by District Area

February 2012 NEET Data

	Cheltenham	Cotswold	Forest	Gloucester	Stroud	Tewkesbury	Total
Number of NEET	148	45	107	245	90	73	708
Cohort	2654	2128	2297	4593	2892	1866	16430
% NEET	5.6%	2.1%	4.7%	5.3%	3.1%	3.9%	4.8%

If you would like to receive any further information on Gloucestershire's NEET strategy then please contact Ruth.Critchlow@gloucestershire.gov.uk or telephone 01452 551267.