

# Unemployment Bulletin

Issue 15 October 2009

## Contents

### Part 1: Summary

A summary of unemployment data at district, County, regional and national level

1

### Part 2: County

Unemployment figures for the County compared to the South West and the rest of the UK

3

### Part 3: Districts

A comparative break down of unemployment figures by district

4

### Part 4: Wards

Further breakdown of unemployment figures by ward:

Cheltenham

6

Cotswolds

8

Forest of Dean

10

Gloucester

12

Stroud

14

Tewkesbury

16

### Part 5: Map

Distribution of claimant rate across Gloucestershire

18

### Part 6: Young People

Data about Young People Not in Education, Employment or Training (NEET)

20

## INTRODUCTION

The Unemployment Bulletin provides a monthly update on unemployment data for Gloucestershire, the South West region and the United Kingdom. It is produced by the Economic section of the County Council Chief Executive's Support Unit Research Team. The data is sourced from the Office for National Statistics via Nomis ([www.nomis.co.uk](http://www.nomis.co.uk)).

The claimant count measures the number of people claiming unemployment-related benefit (currently Job Seeker's allowance). The claimant rate is the number of claimants as a proportion of the working age population.

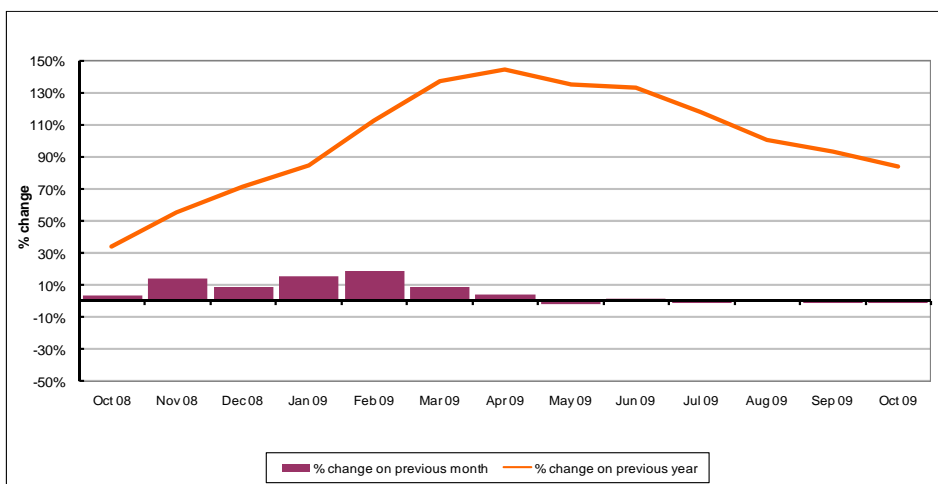
## PART 1: SUMMARY

**The claimant rate in Gloucestershire was 3.5% in October 2009.** This was the same as the September 2009 figure. The UK rate also remained the same as last month at 4.2%, while the South West rate declined to 2.9%. Gloucestershire's rate remains above the South West average of 2.9%, but 0.7% lower than the UK average of 4.2%.

**The claimant count in Gloucestershire in October 2009 declined by 187 people.** The amount of people claiming in October 2009 was 1.5% lower than the number in September 2009 compared to a 1.8% decline in the South West and a 0.5% decrease for the UK.

**The claimant count in Gloucestershire has decreased.** The count was 84% higher in October 2009 than at the same point in the previous year as shown in the graph below.

Gloucestershire claimants - Month on Month and Year on Year change: October 2008 to October 2009



Source: ONS Crown Copyright Reserved

Produced by:

**The Research Team (Economics)**  
Chief Executive Support Unit  
Gloucestershire County Council  
November 2009

## DISTRICTS AT A GLANCE

At a glance unemployment information grouped by district. Includes:

**Claim count:** Total number of people claiming Job Seekers Allowance in October 2009

**Compared to last month:** How much larger/smaller October's claim count is compared to September, expressed as a %

**Claimant rate:** The % of working population claiming Job Seekers Allowance in October 2009

**Highest claiming ward:** The ward with the highest claim count in that district and the rate

### CHELTENHAM BOROUGH

Claim count:	2,868
Compared to last month:	-1.6%
Claimant rate:	4.1%
Highest claiming ward	Hesters Way (8.5%)

### GLOUCESTER CITY

Claim count:	3,292
Compared to last month:	1.6%
Claimant rate:	4.6%
Highest claiming ward	Westgate (8.9%)

### COTSWOLD DISTRICT

Claim count:	1,041
Compared to last month:	-1.9%
Claimant rate:	2.2%
Highest claiming ward	Cirencester Watermoor (4.3%)

### STROUD DISTRICT

Claim count:	1,961
Compared to last month:	-3.9%
Claimant rate:	3.0%
Highest claiming ward	Central (7.6%)

### FOREST OF DEAN

Claim count:	1,584
Compared to last month:	-3.5%
Claimant rate:	3.3%
Highest claiming ward	Cinderford West (5.2%)

### TEWKESBURY BOROUGH

Claim count:	1,437
Compared to last month:	-2.4%
Claimant rate:	3.1%
Highest claiming ward	Tewkesbury Prior's Park (5.6%)

## YOUNG PEOPLE NOT IN EDUCATION, EMPLOYMENT OR TRAINING (NEET)

As at the end of October 2009 there were 902 young people aged 16-18 not in education, employment or training in Gloucestershire and this figure translates into an adjusted (\*) 16-18 NEET population of 5.0%.

## PART 2: UK, SW AND GLOUCESTERSHIRE INDICATORS

The unemployment situation in Gloucestershire compared to the South West and the UK.

### Claimant Rate

Figure 1: Claimant Rate for Gloucestershire, the South West and UK over the past year

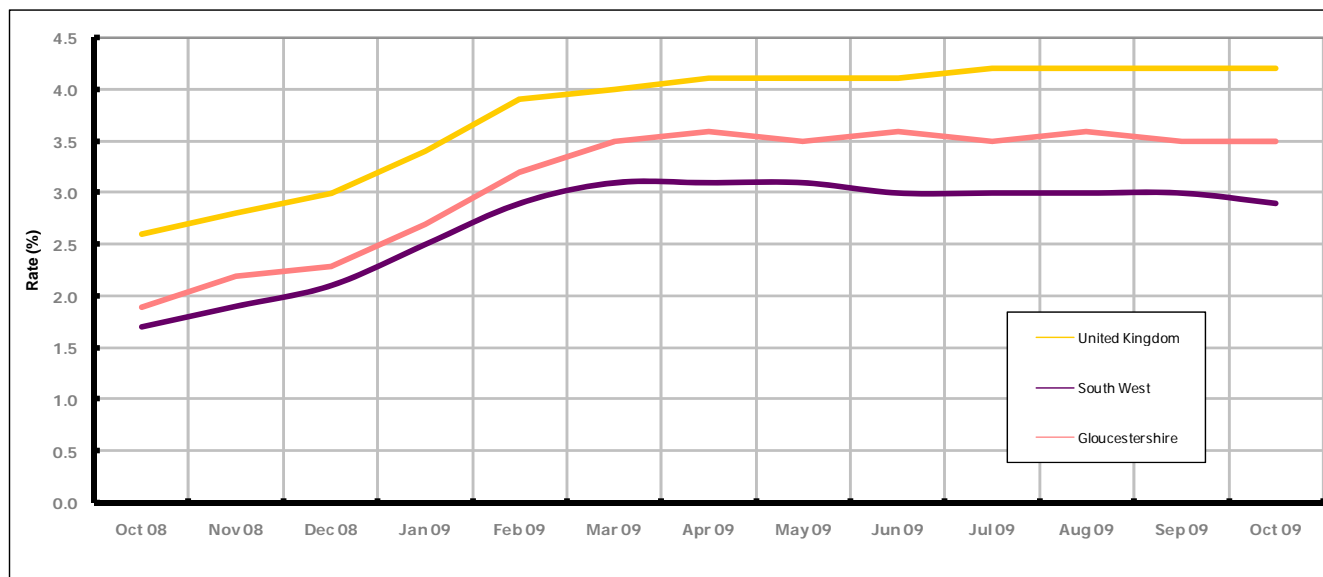


Figure 1 shows the claimant rate for Gloucestershire at 3.5% in October 2009. The rate has remained slightly higher than the South West average over the past year, but persistently lower by approximately 0.7% against the UK average during the same period. The October 2009 rate remained the same as September 2009.

### Claimant Count

Table 1: Analysis of UK, South West and Gloucestershire Claimant Counts

Area	Claimant Count in October 2009	% change on September 2009	Average % increase over the last six months	Consecutive months increasing
UK	1,582,555	-0.5%	+0.2%	0
South West	91,613	-1.8%	-0.9%	0
Gloucestershire	12,183	-1.5%	-0.4%	0

Table 1 shows that in October 2009, the number of claimants in Gloucestershire was 1.5% lower than the number in September 2009.

The average growth in claimants in Gloucestershire for the six months to October 2009 was -0.4%. This is 0.6% lower than the UK average and 0.5% higher than the South West region.

## PART 3: LOCAL AUTHORITY DISTRICT ANALYSIS

### Claimant Rate and Claimant Count

Figure 2: Claimant Rate (%) across Gloucestershire - October 2009

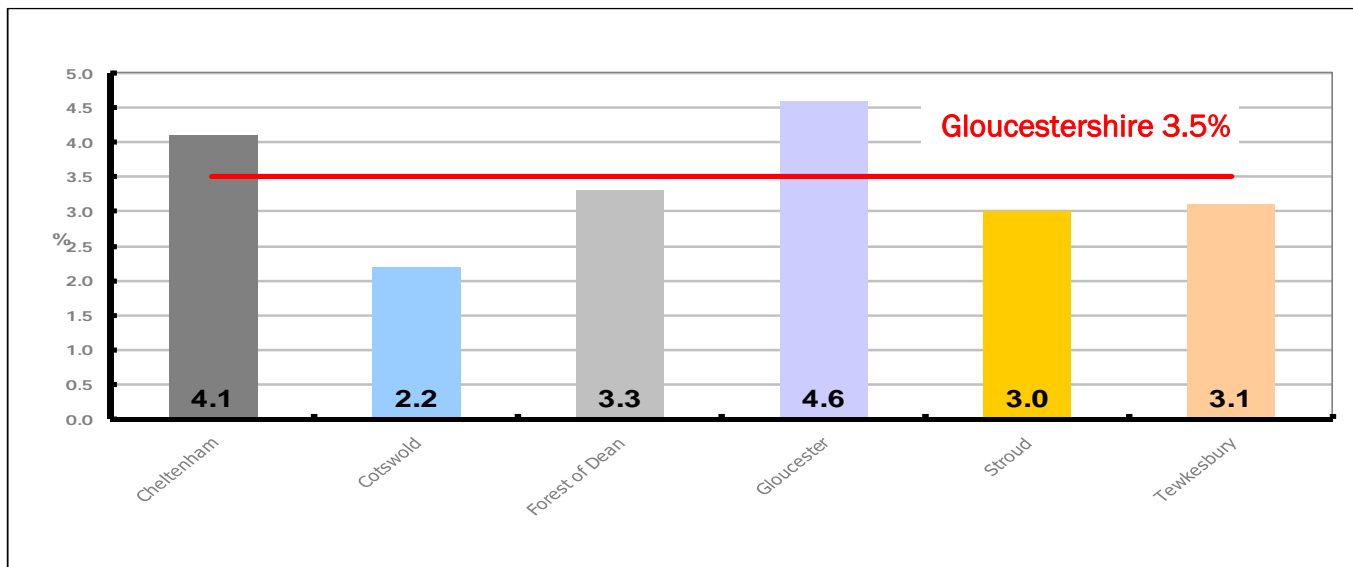


Figure 2 shows the claimant rate for October 2009 in Gloucestershire. Between September 2009 and October 2009 Cotswold and Tewkesbury districts remained the same, while the other districts declined.

Figure 3: Total claimants over the past year across Gloucestershire Districts

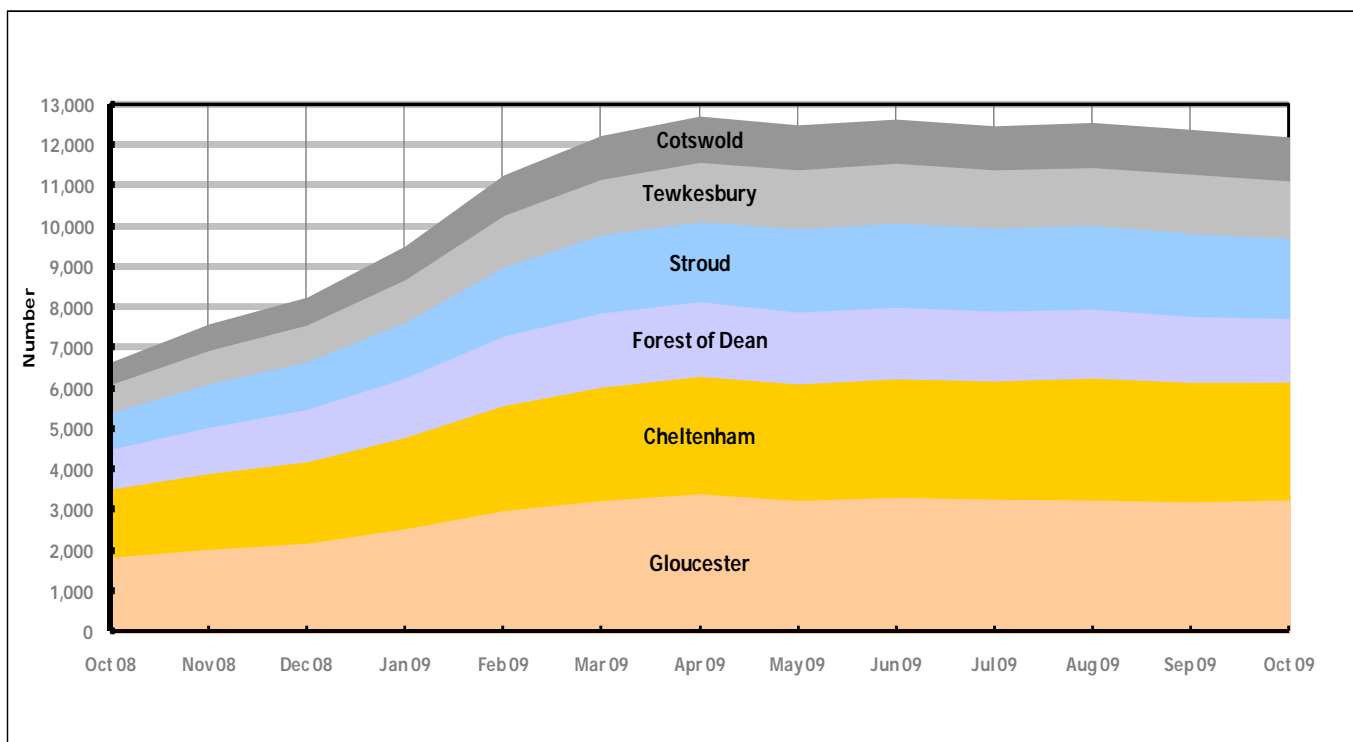


Figure 3 shows the overall claimant count by district for Gloucestershire over the past year. It demonstrates a noticeable levelling off since April 2009.

Table 2: Analysis of Gloucestershire and District Claimant Counts

Total	Oct 09 Number	Oct 09 Rate	Sep 09 Number	Sep 09 Rate	Monthly change	% monthly change	Monthly change of rate
<b>Gloucestershire</b>	12,183	3.5	12,370	3.5	-187	-1.5%	0.0
Cheltenham	2,868	4.1	2,915	4.2	-47	-1.6%	-0.1
Cotswold	1,041	2.2	1,061	2.2	-20	-1.9%	0.0
Forest of Dean	1,584	3.3	1,641	3.4	-57	-3.5%	-0.1
Gloucester	3,292	4.6	3,240	4.5	52	1.6%	0.1
Stroud	1,961	3.0	2,040	3.1	-79	-3.9%	-0.1
Tewkesbury	1,437	3.1	1,473	3.1	-36	-2.4%	0.0

Table 2 shows the change in the claimant count in October 2009 compared to September 2009. Gloucester district experienced an increase while the remaining districts underwent a decrease.

Table 3: Analysis of Male Gloucestershire and District Claimant Counts

Male	Oct 09 Number	Oct 09 Rate	Sep 09 Number	Sep 09 Rate	Monthly change	% monthly change	Monthly change of rate
<b>Gloucestershire</b>	8,839	4.8	8,980	4.9	-141	-1.6%	-0.1
Cheltenham	2,115	5.8	2,134	5.8	-19	-0.9%	0.0
Cotswold	738	2.9	767	3.0	-29	-3.8%	-0.1
Forest of Dean	1,128	4.4	1,170	4.5	-42	-3.6%	-0.1
Gloucester	2,463	6.6	2,427	6.5	36	1.5%	0.1
Stroud	1,405	4.1	1,468	4.2	-63	-4.3%	-0.1
Tewkesbury	990	4.1	1,014	4.1	-24	-2.4%	0.0

Table 3 shows the change in the male claimant count in October 2009 compared to September 2009. Gloucester district experienced an increase while the other districts underwent a decrease.

Table 4: Analysis of Female Gloucestershire and District Claimant Counts

Female	Oct 09 Number	Oct 09 Rate	Sep 09 Number	Sep 09 Rate	Monthly change	% monthly change	Monthly change of rate
<b>Gloucestershire</b>	3,344	2.0	3,390	2.0	-46	-1.4%	0.0
Cheltenham	753	2.3	781	2.3	-28	-3.6%	0.0
Cotswold	303	1.3	294	1.3	9	3.1%	0.0
Forest of Dean	456	2.0	471	2.1	-15	-3.2%	-0.1
Gloucester	829	2.4	813	2.4	16	2.0%	0.0
Stroud	556	1.8	572	1.8	-16	-2.8%	0.0
Tewkesbury	447	2.0	459	2.0	-12	-2.6%	0.0

Table 4 shows the change in the female claimant count in October 2009 compared to September 2009. Cotswold and Gloucester districts experienced an increase, while the other districts underwent a decline.

## PART 4: LOCAL AUTHORITY DISTRICT AND WARD ANALYSIS

This section covers the six districts and a comparison of their constituent wards.

### 4.1 Cheltenham Borough

#### Claimant Rate and Claimant Count

Figure 4: Cheltenham Borough claimant rate over the last year

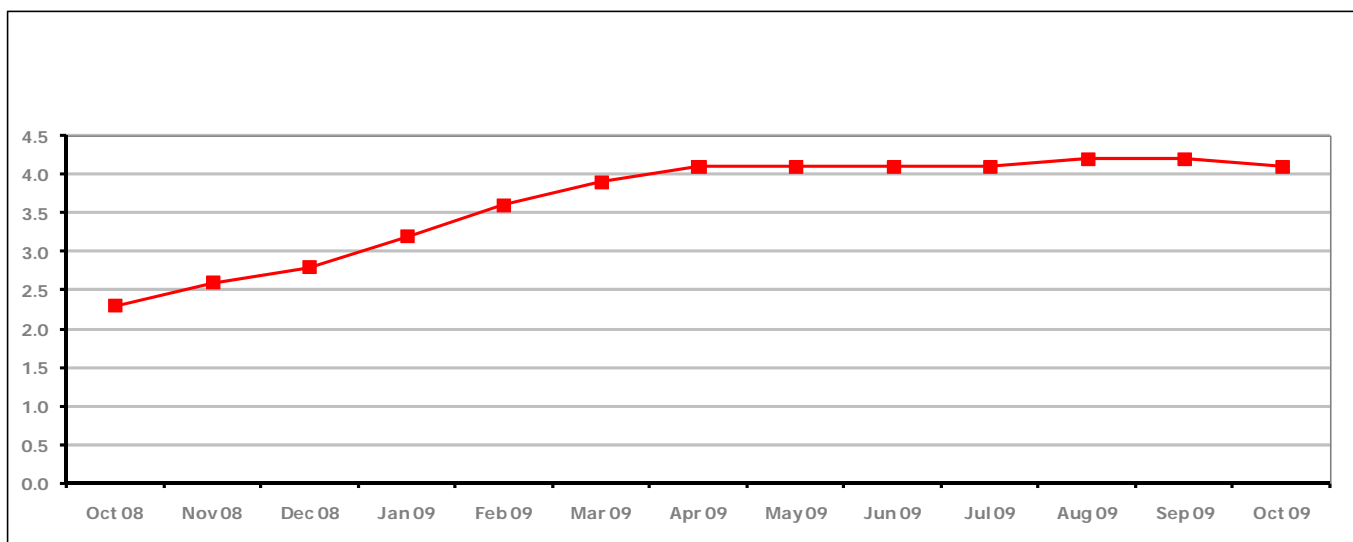


Figure 4 shows the claimant rate in Cheltenham declined in October 2009 to 4.1%.

Figure 5: Cheltenham Borough claimants - Month on Month and Year on Year change

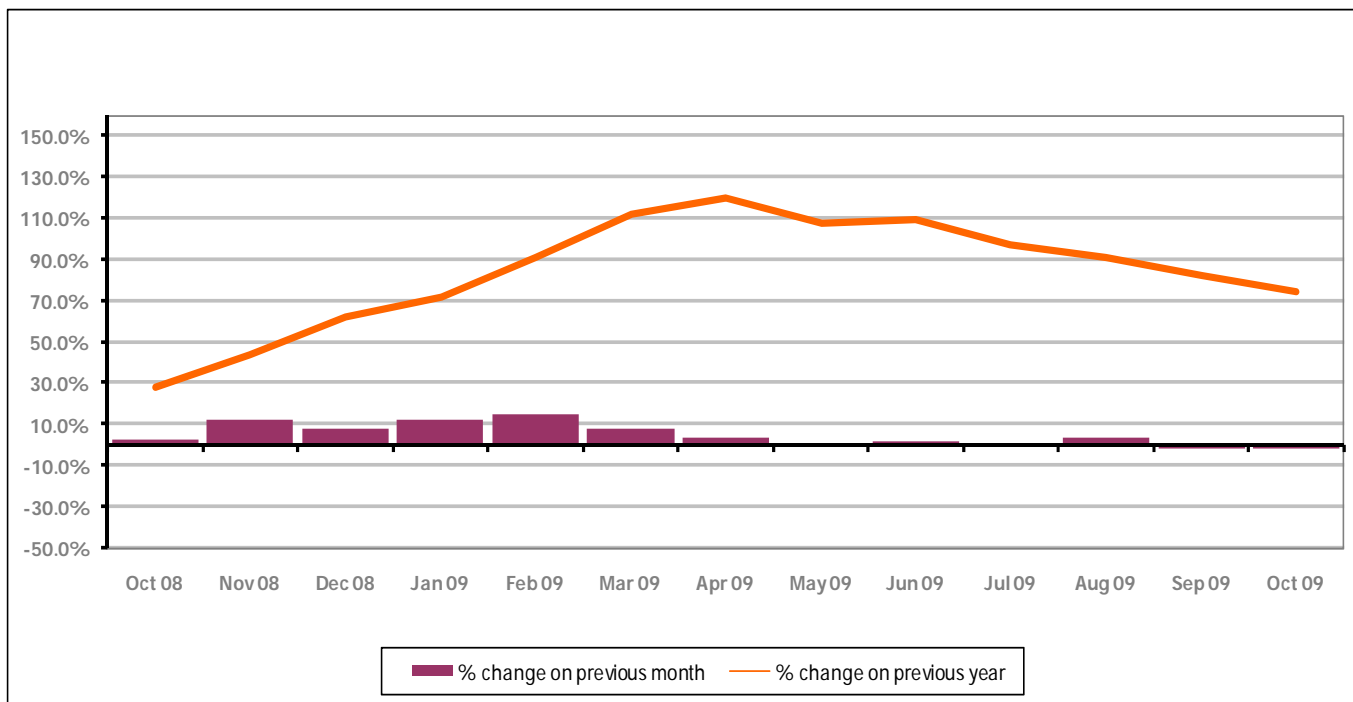


Figure 5 shows the claimant count declined by 1.6% since last month. In addition, the change on the previous year has gone down in October 2009 compared to September 2009 to 74%.

## PART 4: LOCAL AUTHORITY DISTRICT AND WARD ANALYSIS

## 4.1 Cheltenham Borough continued...

Figure 6: Claimant rates across Cheltenham Borough wards - October 2009

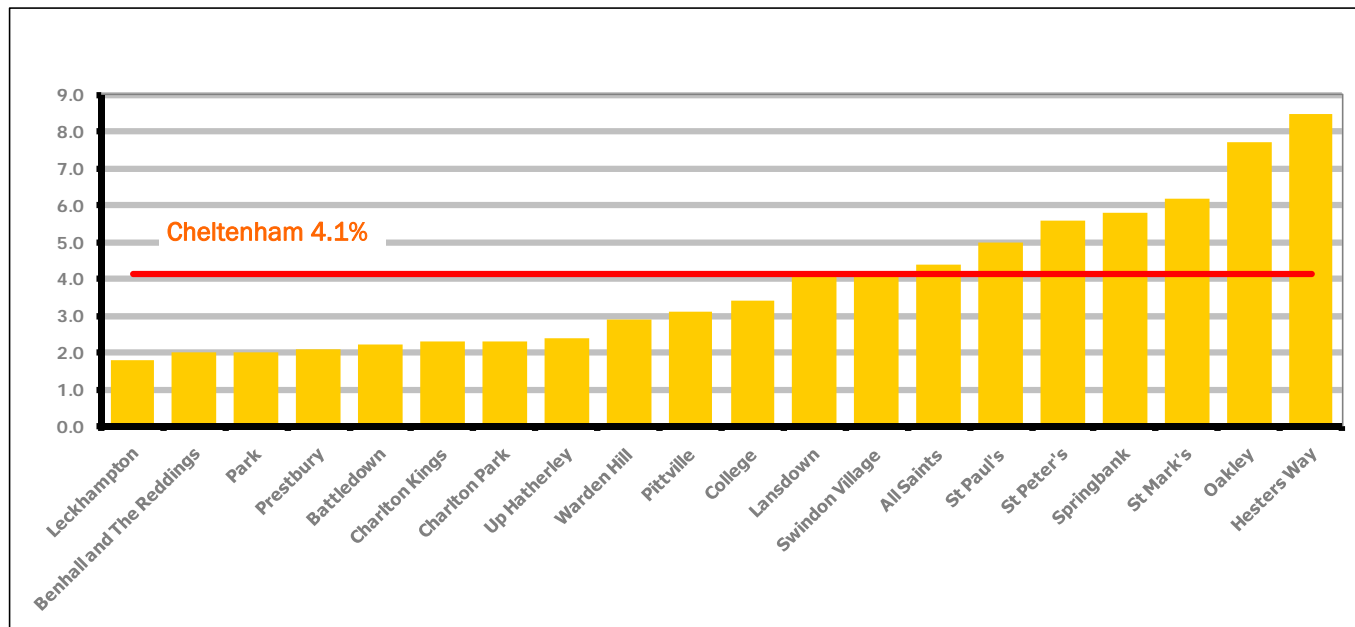
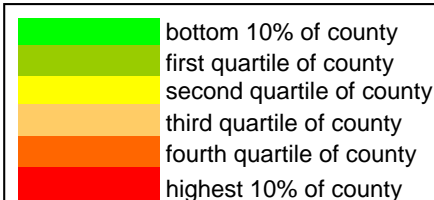


Figure 6 shows the claimant rates for Cheltenham Borough wards. The red line represents the average claimant rate across the Borough of 4.1%. Nine wards lie above the average.

Table 5: Analysis of Claimant Count at Cheltenham Borough ward level - October 2009

District	Ward	Rate	Rank*
Cheltenham	Leckhampton	1.8	27
Cheltenham	Benhall and The Reddings	2.0	35
Cheltenham	Park	2.0	35
Cheltenham	Prestbury	2.1	39
Cheltenham	Battledown	2.2	49
Cheltenham	Charlton Kings	2.3	57
Cheltenham	Charlton Park	2.3	57
Cheltenham	Up Hatherley	2.4	61
Cheltenham	Warden Hill	2.9	79
Cheltenham	Pittville	3.1	87
Cheltenham	College	3.4	98
Cheltenham	Lansdown	4.2	114
Cheltenham	Swindon Village	4.2	114
Cheltenham	All Saints	4.4	118
Cheltenham	St Paul's	5.0	124
Cheltenham	St Peter's	5.6	131
Cheltenham	Springbank	5.8	133
Cheltenham	St Mark's	6.2	135
Cheltenham	Oakley	7.7	139
Cheltenham	Hesters Way	8.5	141



\* 1 = "best" and 142 = "worst"

Table 5 shows overall claimant rates for Cheltenham Borough wards and their position relative to all wards in Gloucestershire.

## PART 4: LOCAL AUTHORITY DISTRICT AND WARD ANALYSIS

## 4.2 Cotswold District

## Claimant Rate and Claimant Count

Figure 7: Cotswold District claimant rate over the last year

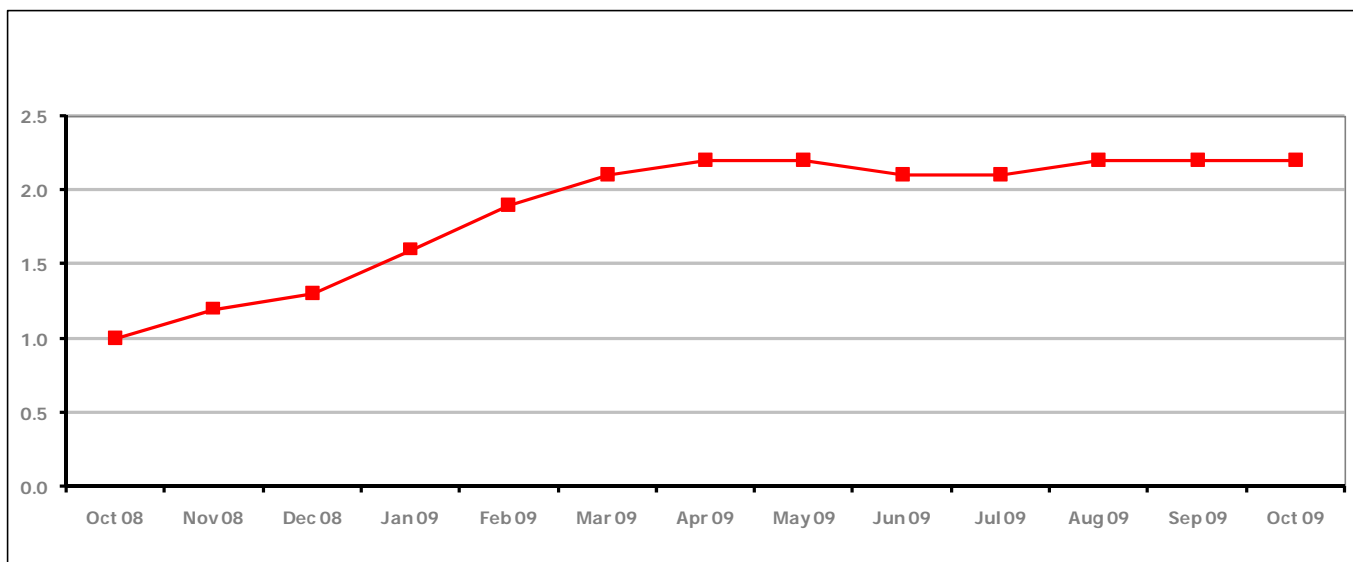


Figure 7 shows the claimant rate in Cotswold District has remained the same for the last two months, at 2.2%. Prior to this the rate had been lower for two months.

Figure 8: Cotswold District claimants - Month on Month and Year on Year change

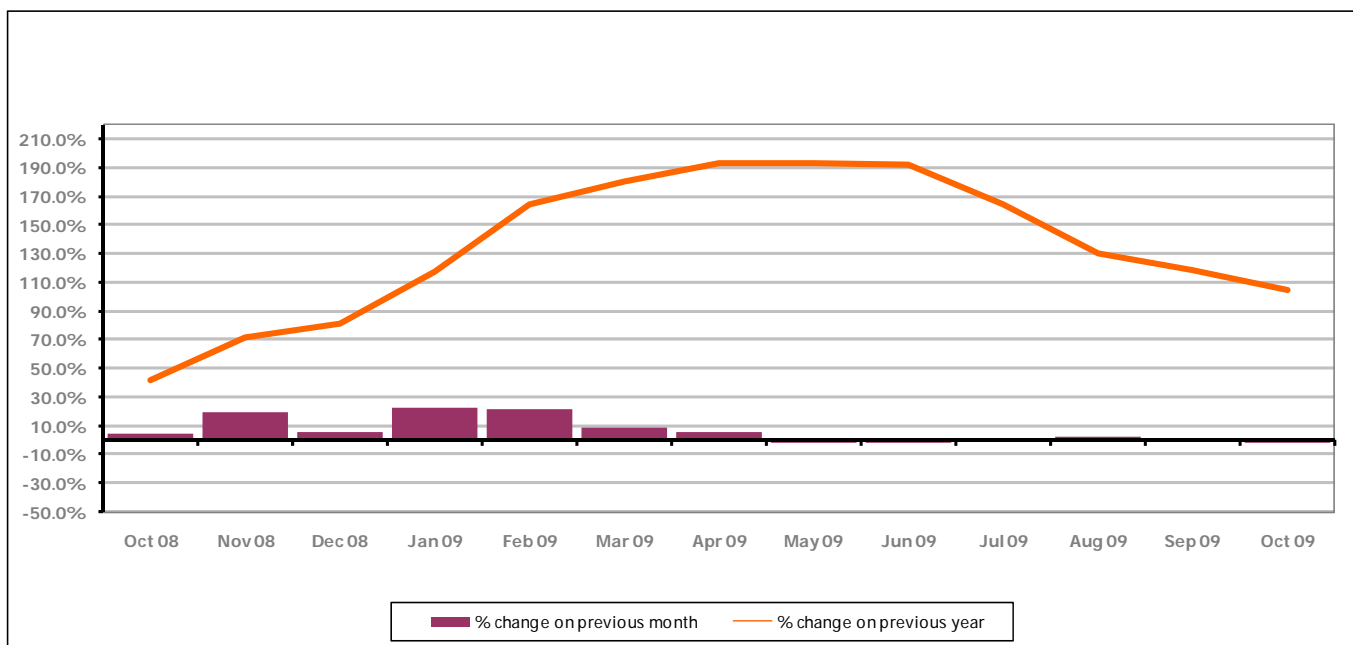


Figure 8 shows the claimant count decreased by 1.9% since September 2009. The change on the previous year has decreased from September 2009 to October 2009 to 104.5%.



## PART 4: LOCAL AUTHORITY DISTRICT AND WARD ANALYSIS

## 4.2 Cotswold District continued...

Figure 9: Claimant rates across Cotswold District wards - October 2009

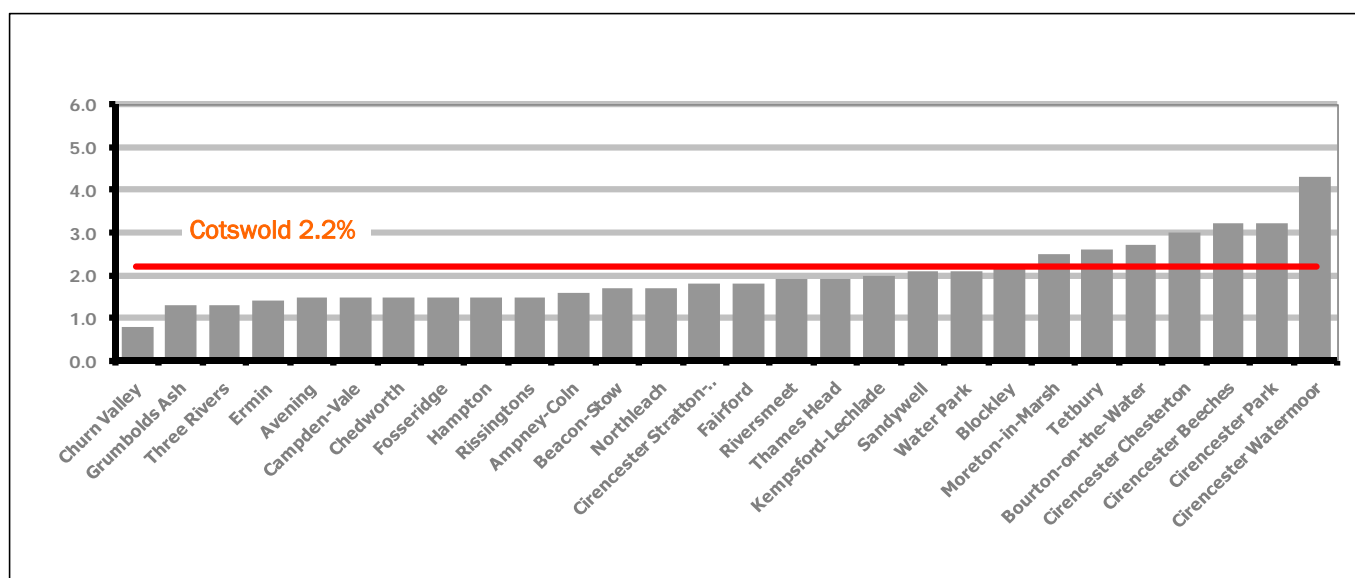
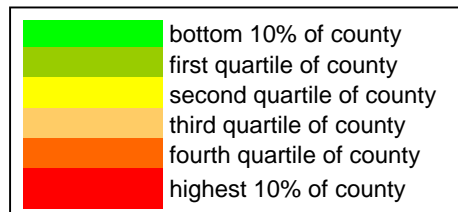


Figure 9 shows the claimant rates for Cotswold District wards. The red line represents the average claimant rate across the District of 2.2%. Seven wards lie above the average.

Table 6: Analysis of Claimant Count at Cotswold District ward level - October 2009

District	Ward	Rate	Rank*
Cotswolds	Churn Valley	0.8	2
Cotswolds	Grumbolds Ash	1.3	5
Cotswolds	Three Rivers	1.3	5
Cotswolds	Ermin	1.4	8
Cotswolds	Avening	1.5	12
Cotswolds	Campden-Vale	1.5	12
Cotswolds	Chedworth	1.5	12
Cotswolds	Fosseridge	1.5	12
Cotswolds	Hampton	1.5	12
Cotswolds	Rissingtons	1.5	12
Cotswolds	Ampney-Coln	1.6	18
Cotswolds	Beacon-Stow	1.7	22
Cotswolds	Northleach	1.7	22
Cotswolds	Cirencester Stratton-Whiteway	1.8	27
Cotswolds	Fairford	1.8	27
Cotswolds	Riversmeet	1.9	31
Cotswolds	Thames Head	1.9	31
Cotswolds	Kempsford-Lechlade	2.0	35
Cotswolds	Sandywell	2.1	39
Cotswolds	Water Park	2.1	39
Cotswolds	Blockley	2.2	49
Cotswolds	Moreton-in-Marsh	2.5	67
Cotswolds	Tetbury	2.6	71
Cotswolds	Bourton-on-the-Water	2.7	73
Cotswolds	Cirencester Chesterton	3.0	84
Cotswolds	Cirencester Beeches	3.2	91
Cotswolds	Cirencester Park	3.2	91
Cotswolds	Cirencester Watermoor	4.3	117



\* 1 = "best" and 142 = "worst"

Table 6 shows overall claimant rates for Cotswold District wards and their position relative to all wards in Gloucestershire.

## PART 4: LOCAL AUTHORITY DISTRICT AND WARD ANALYSIS

## 4.3 Forest of Dean District

## Claimant Rate and Claimant Count

Figure 10: Forest of Dean District claimant rate over the last year

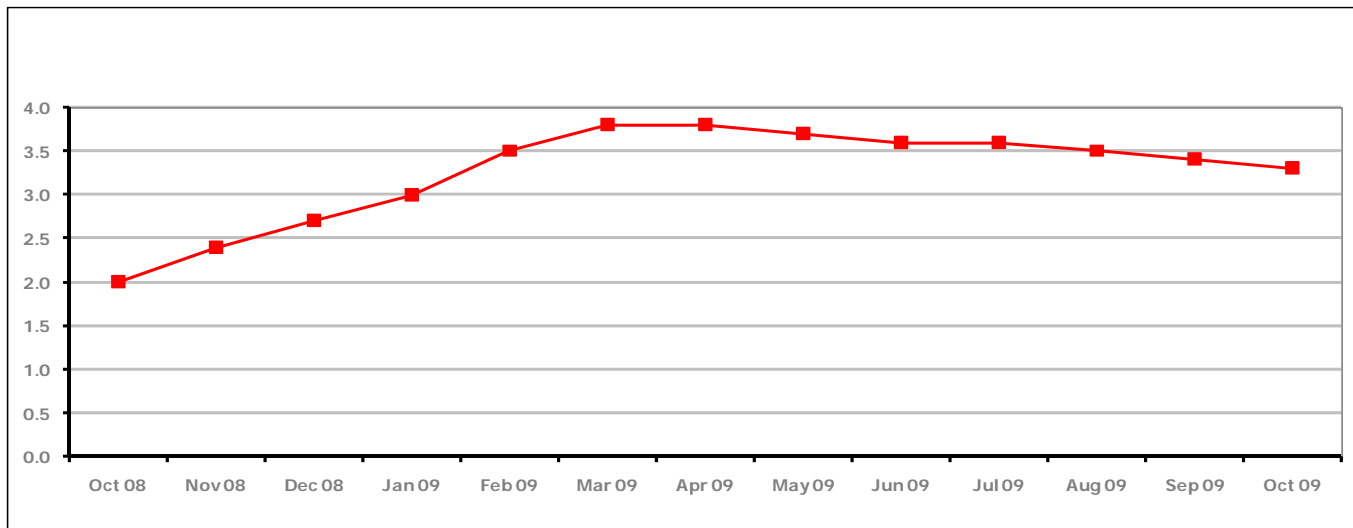


Figure 10 shows the claimant rate in the Forest of Dean in October 2009 amounting to 3.3% is continuing the downward trend shown since April 2009.

Figure 11: Forest of Dean District claimants - Month on Month and Year on Year change

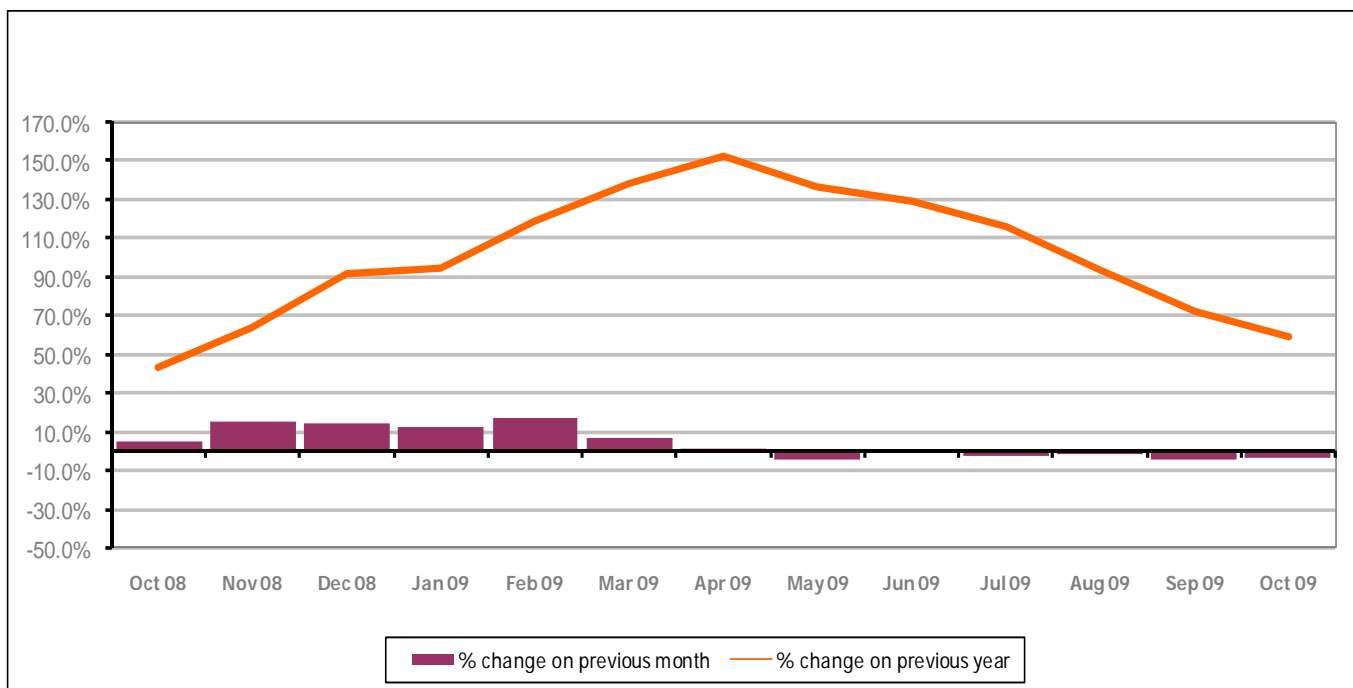


Figure 11 shows the claimant count decreased by 3.5% since the previous month. The change on the previous year has also decreased between October 2009 and September 2009 to 58.9%.

## PART 4: LOCAL AUTHORITY DISTRICT AND WARD ANALYSIS

## 4.3 Forest of Dean District continued...

Figure 12: Claimant rates across Forest of Dean District wards - October 2009

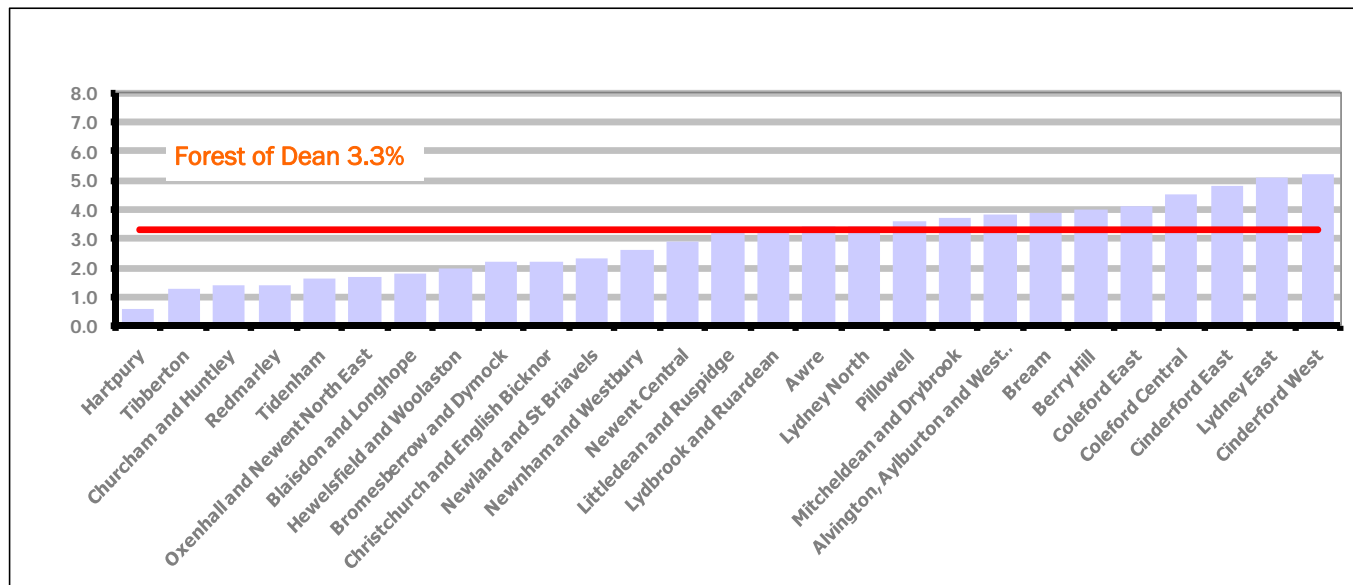


Figure 12 shows the claimant rates for Forest of Dean District wards. The red line represents the average claimant rate across the District of 3.3%. Twelve wards lie above the average.

Table 7: Analysis of Claimant Count at Forest of Dean District ward level - October 2009

District	Ward	Rate	Rank*
Forest	Hartpury	0.6	1
Forest	Tibberton	1.3	5
Forest	Churcham and Huntley	1.4	8
Forest	Redmarley	1.4	8
Forest	Tidenham	1.6	18
Forest	Oxenhall and Newent North East	1.7	22
Forest	Blaisdon and Longhope	1.8	27
Forest	Hewelsfield and Woolaston	2.0	35
Forest	Bromesberrow and Dymock	2.2	49
Forest	Christchurch and English Bicknor	2.2	49
Forest	Newland and St Briavels	2.3	57
Forest	Newnham and Westbury	2.6	71
Forest	Newent Central	2.9	79
Forest	Littledean and Ruspidge	3.2	91
Forest	Lydbrook and Ruardean	3.2	91
Forest	Awre	3.4	98
Forest	Lydney North	3.4	98
Forest	Pillowell	3.6	103
Forest	Mitcheldean and Drybrook	3.7	104
Forest	Alvington, Aylburton and West Lydney	3.8	106
Forest	Bream	3.9	109
Forest	Berry Hill	4.0	110
Forest	Coleford East	4.1	112
Forest	Coleford Central	4.5	122
Forest	Cinderford East	4.8	123
Forest	Lydney East	5.1	126
Forest	Cinderford West	5.2	127

	bottom 10% of county
	first quartile of county
	second quartile of county
	third quartile of county
	fourth quartile of county
	highest 10% of county

\* 1 = "best" and 142 = "worst"

Table 7 shows overall claimant rates for the Forest of Dean District wards and their position relative to all wards in Gloucestershire.

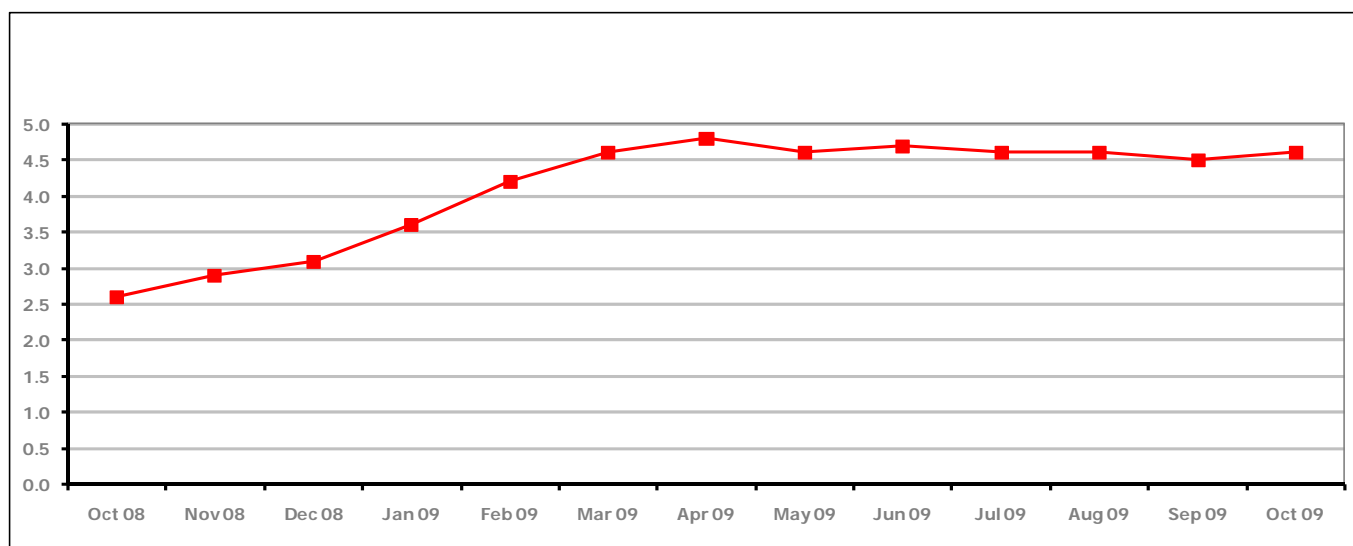
**PART 4: LOCAL AUTHORITY DISTRICT AND WARD ANALYSIS****4.4 Gloucester City****Claimant Rate and Claimant Count***Figure 13: Gloucester City claimant rate over the last year*

Figure 13 shows the claimant rate for Gloucester City increased in October 2009 at 4.6%.

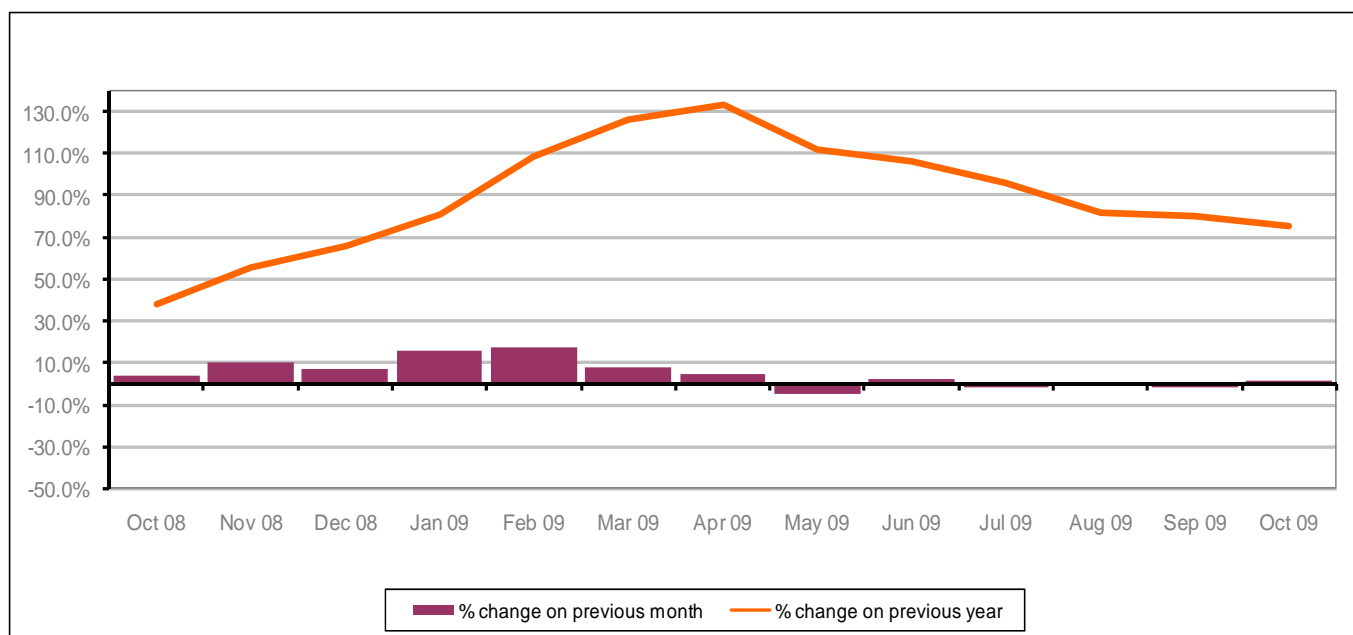
*Figure 14: Gloucester City claimants - Month on Month and Year on Year change*

Figure 14 shows the monthly claimant count increased by 1.6% since September 2009, the first increase for three months. The change on the previous year has decreased between September 2009 and October 2009 to 75.2%.

## PART 4: LOCAL AUTHORITY DISTRICT AND WARD ANALYSIS

## 4.4 Gloucester City continued...

Figure 15: Claimant rates across Gloucester City wards - October 2009

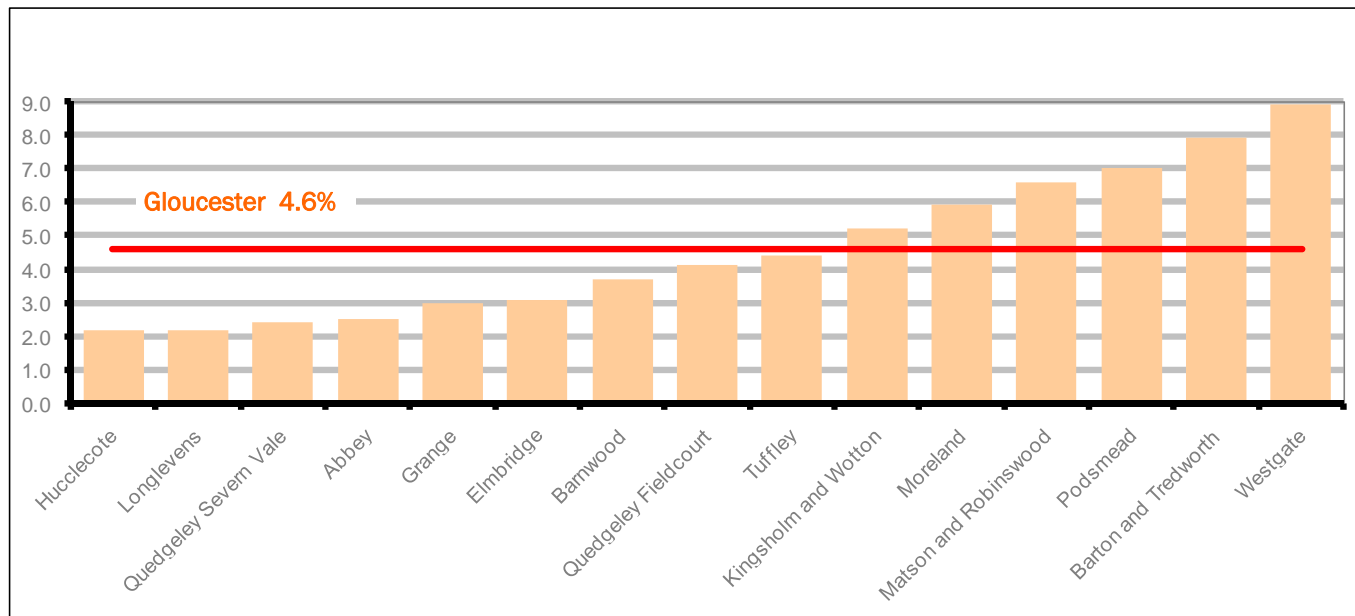
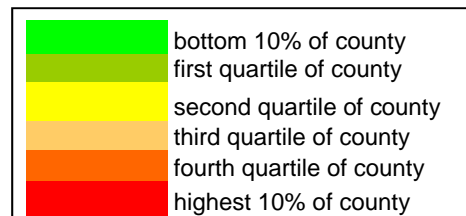


Figure 15 shows the claimant rates for Gloucester City district wards. The red line represents the average claimant rate across the City of 4.6%. Six wards lie above the average.

Table 8: Analysis of Claimant Count at Gloucester City ward level - October 2009

District	Ward	Rate	Rank*
Gloucester	Hucclecote	2.2	49
Gloucester	Longlevens	2.2	49
Gloucester	Quedgeley Severn Vale	2.4	61
Gloucester	Abbey	2.5	67
Gloucester	Grange	3.0	84
Gloucester	Elmbridge	3.1	87
Gloucester	Barnwood	3.7	104
Gloucester	Quedgeley Fieldcourt	4.1	112
Gloucester	Tuffley	4.4	118
Gloucester	Kingsholm and Wotton	5.2	127
Gloucester	Moreland	5.9	134
Gloucester	Matson and Robinswood	6.6	136
Gloucester	Podsmead	7.0	137
Gloucester	Barton and Tredworth	7.9	140
Gloucester	Westgate	8.9	142



\* 1 = "best" and 142 = "worst"

Table 8 shows overall claimant rates for Gloucester City wards and their position relative to all wards in Gloucestershire.

## PART 4: LOCAL AUTHORITY DISTRICT AND WARD ANALYSIS

## 4.5 Stroud District

## Claimant Rate and Claimant Count

Figure 16: Stroud District claimant rate over the last year

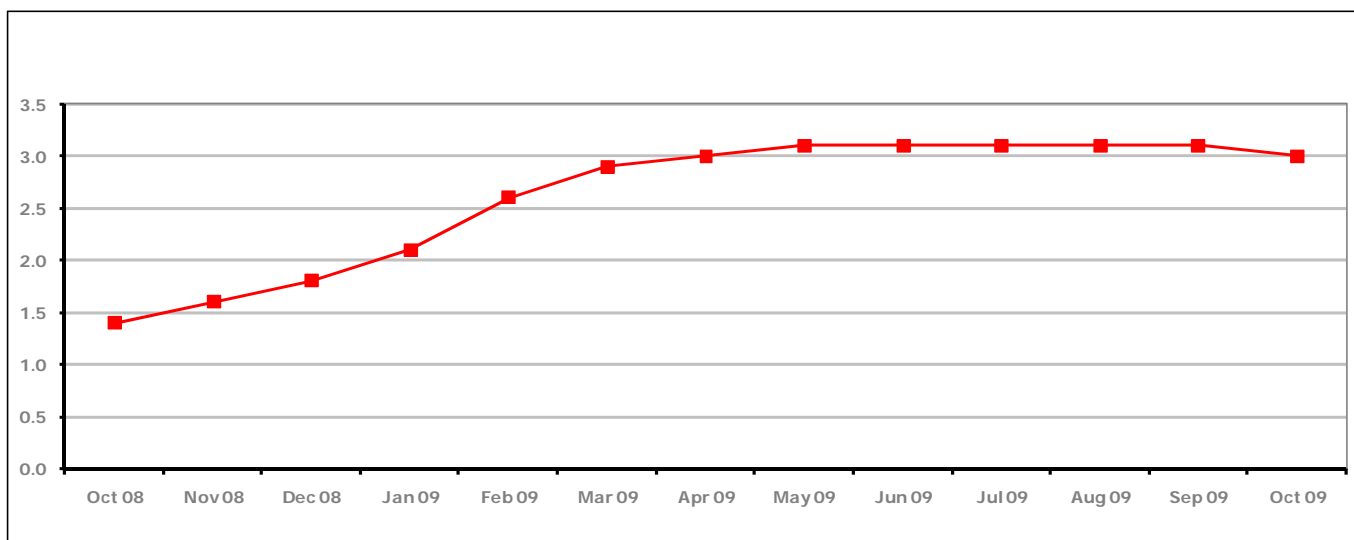


Figure 16 shows the claimant rate for Stroud District declined to 3.0%, the first decrease since May 2009.

Figure 17: Stroud District claimants - Month on Month and Year on Year change

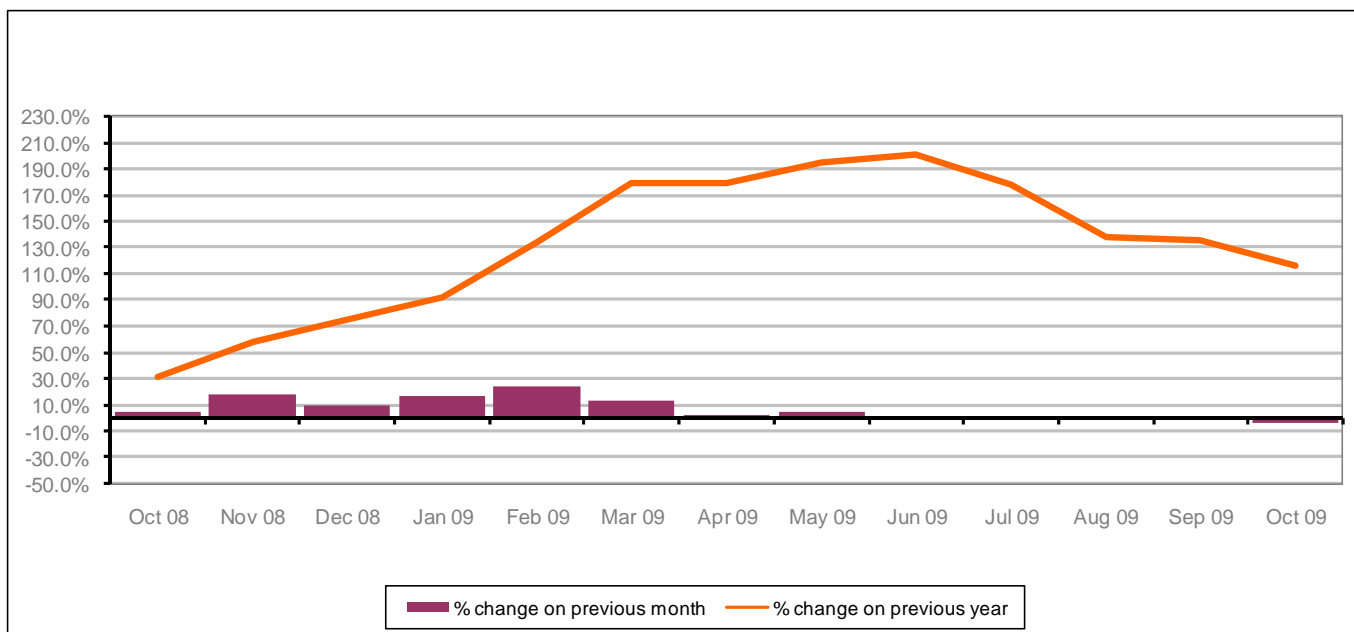


Figure 17 shows the monthly claimant count declined by 3.9% since September 2009. The change on the previous year has decreased between September 2009 and October 2009 to 116.0%.

## PART 4: LOCAL AUTHORITY AND DISTRICT ANALYSIS

## 4.5 Stroud District continued...

Figure 18: Claimant rates across Stroud District wards - October 2009

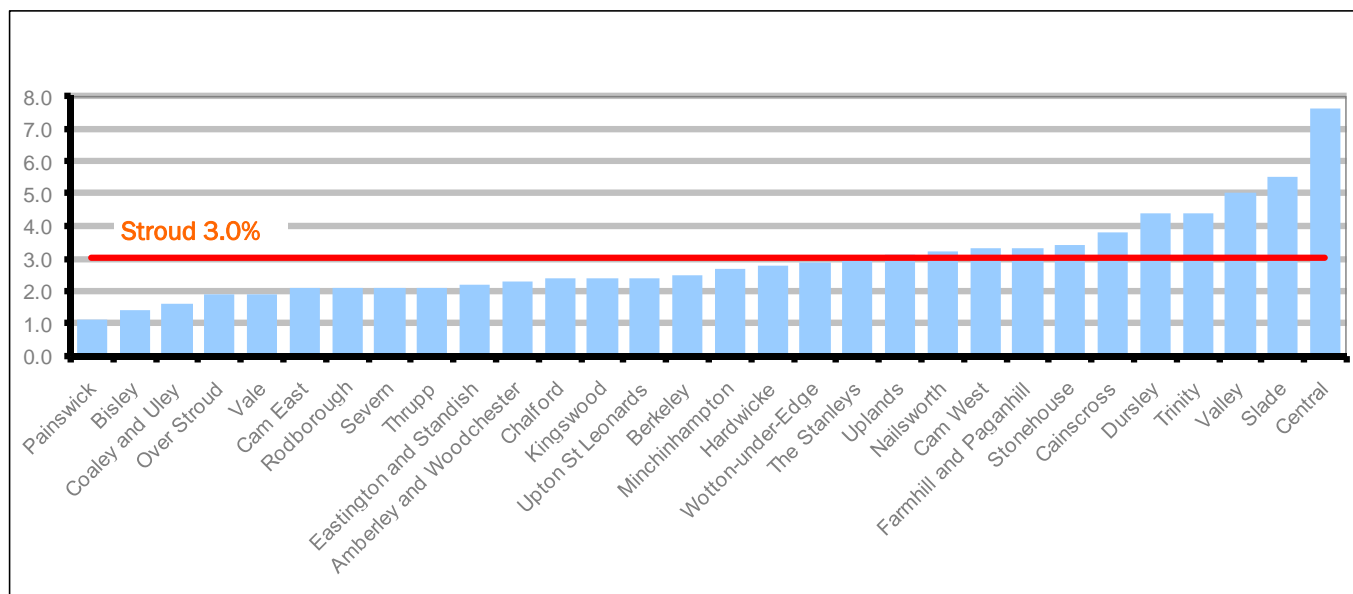
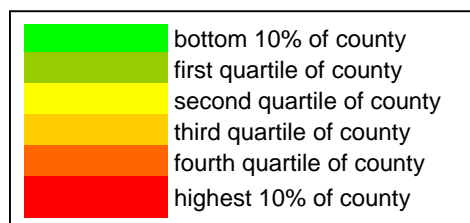


Figure 18 shows the claimant rates in Stroud District wards. The red line represents the average claimant rate across the District of 3.0% and eleven wards are above the average.

Table 9: Analysis of Claimant Count at Stroud District ward level - October 2009

District	Ward	Rate	Rank*
Stroud	Painswick	1.1	3
Stroud	Bisley	1.4	8
Stroud	Coalely and Uley	1.6	18
Stroud	Over Stroud	1.9	31
Stroud	Vale	1.9	31
Stroud	Cam East	2.1	39
Stroud	Rodborough	2.1	39
Stroud	Severn	2.1	39
Stroud	Thrupp	2.1	39
Stroud	Eastington and Standish	2.2	49
Stroud	Amberley and Woodchester	2.3	57
Stroud	Chalford	2.4	61
Stroud	Kingswood	2.4	61
Stroud	Upton St Leonards	2.4	61
Stroud	Berkeley	2.5	67
Stroud	Minchinhampton	2.7	73
Stroud	Hardwicke	2.8	77
Stroud	Wotton-under-Edge	2.9	79
Stroud	The Stanleys	3.0	84
Stroud	Uplands	3.1	87
Stroud	Nailsworth	3.2	91
Stroud	Cam West	3.3	96
Stroud	Farmhill and Paganhill	3.3	96
Stroud	Stonehouse	3.4	98
Stroud	Cainscross	3.8	106
Stroud	Dursley	4.4	118
Stroud	Trinity	4.4	118
Stroud	Valley	5.0	124
Stroud	Slade	5.5	130
Stroud	Central	7.6	138



\* 1 = "best" and 142 = "worst"

Table 9 shows overall claimant rates for Stroud District wards and their position relative to all wards in Gloucestershire.

## PART 4: LOCAL AUTHORITY DISTRICT AND WARD ANALYSIS

## 4.6 Tewkesbury District

## Claimant Rate and Claimant Count

Figure 19: Tewkesbury District claimant rate over the last year

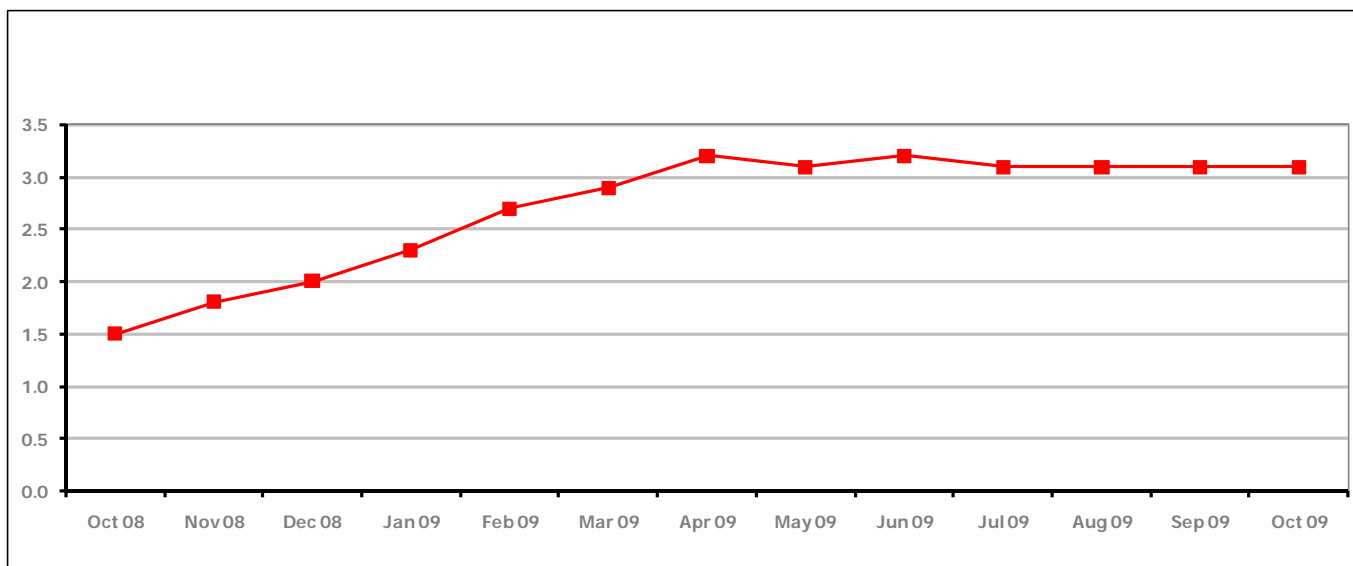


Figure 19 shows the claimant rate for Tewkesbury District remained the same at 3.1% in October 2009. The rate has remained at this level for the last three months.

Figure 20: Tewkesbury District claimants - Month on Month and Year on Year change

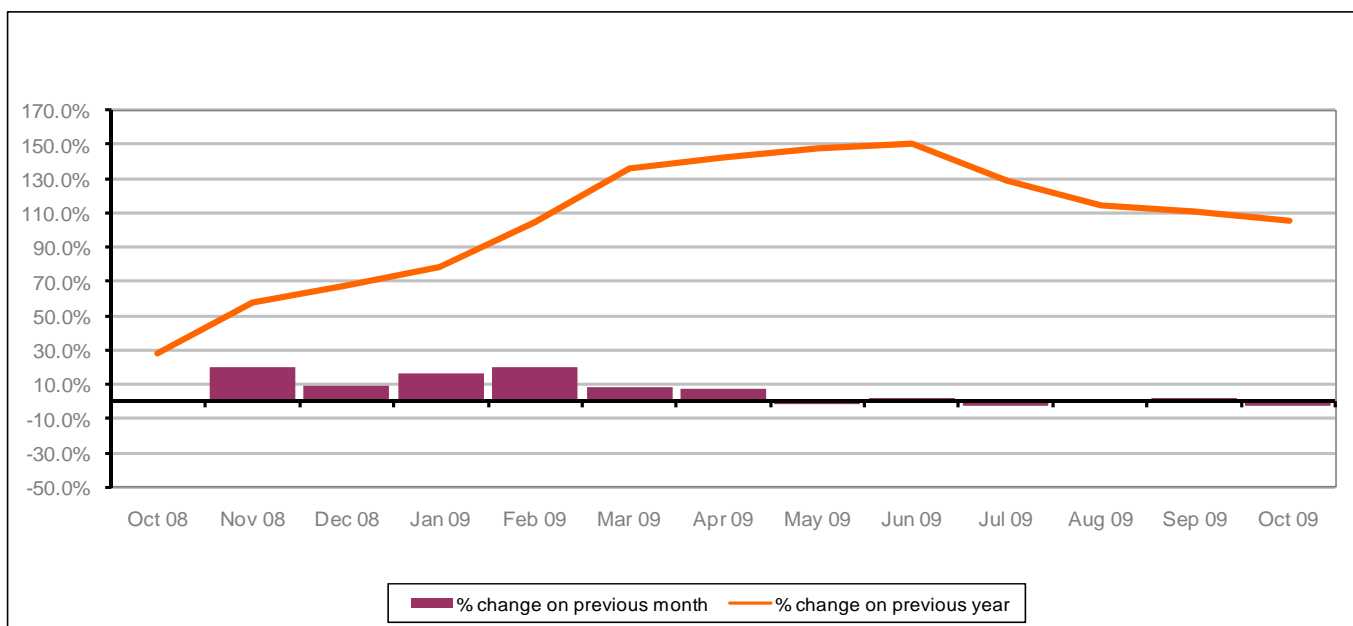


Figure 20 shows that the monthly claimant count declined in October 2009 by 2.4%. The change on the previous year increased between September 2009 and October 2009 to 105.6%.



## PART 4: LOCAL AUTHORITY AND DISTRICT ANALYSIS

## 4.6 Tewkesbury District continued...

Figure 21: Claimant rates across Tewkesbury District wards - October 2009

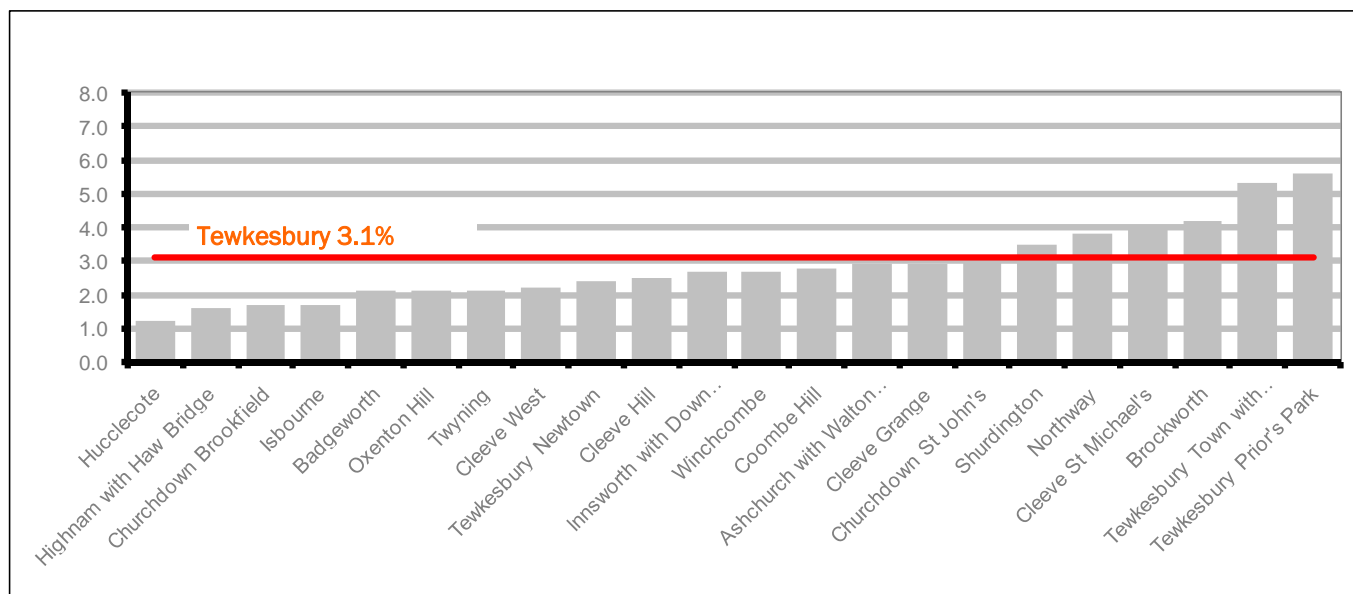
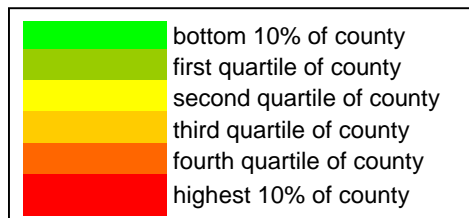


Figure 21 shows the claimant rates in Tewkesbury District wards. The red line represents the average claimant rate across the District of 3.1% and six wards are above the average.

Table 10: Analysis of Claimant Count at Tewkesbury District level - October 2009

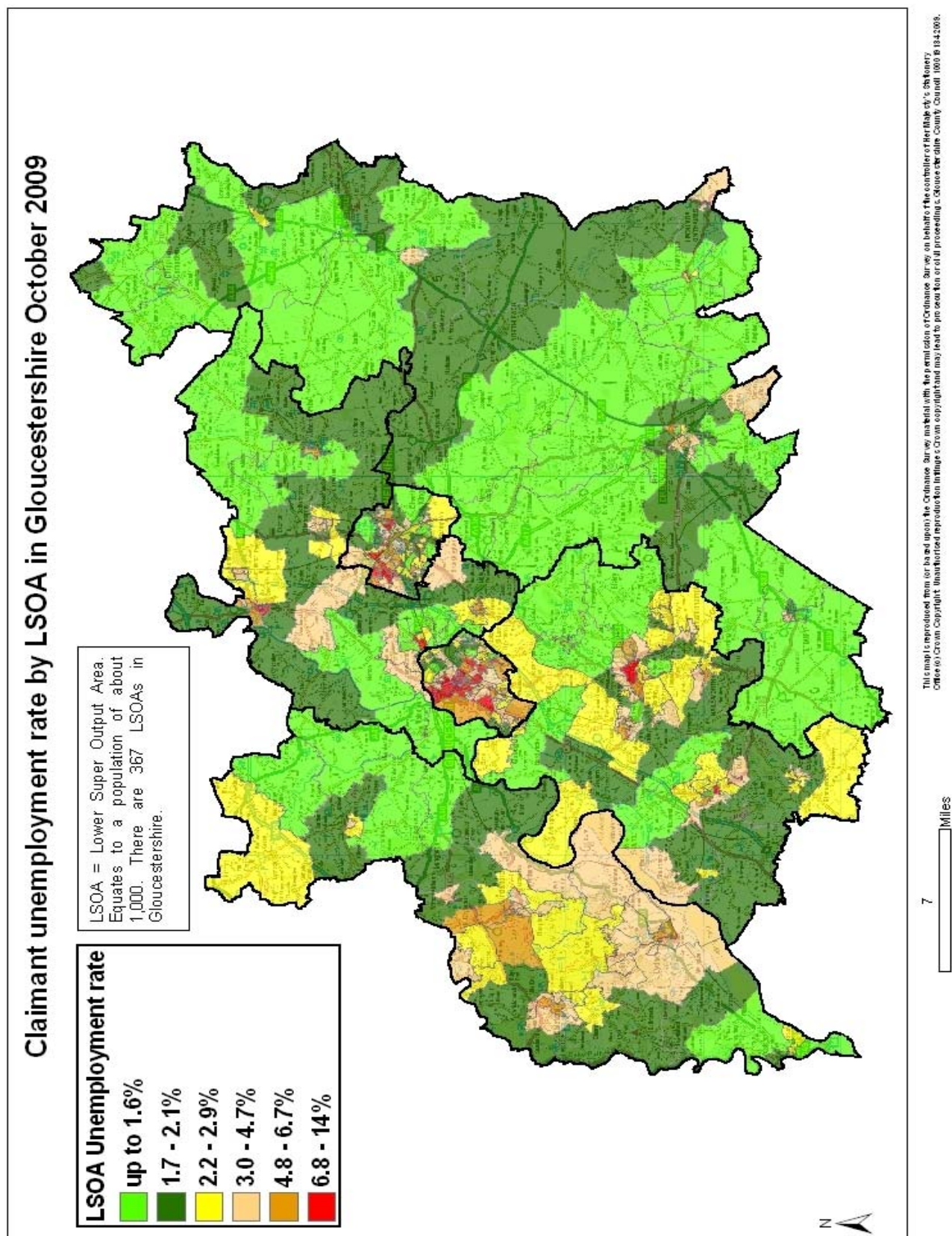
District	Ward	Rate	Rank*
Tewkesbury	Hucclecote	1.2	4
Tewkesbury	Highnam with Haw Bridge	1.6	18
Tewkesbury	Churchdown Brookfield	1.7	22
Tewkesbury	Isbourne	1.7	22
Tewkesbury	Badgeworth	2.1	39
Tewkesbury	Oxenton Hill	2.1	39
Tewkesbury	Twynning	2.1	39
Tewkesbury	Cleeve West	2.2	49
Tewkesbury	Tewkesbury Newtown	2.4	61
Tewkesbury	Cleeve Hill	2.5	67
Tewkesbury	Innsworth with Down Hatherley	2.7	73
Tewkesbury	Winchcombe	2.7	73
Tewkesbury	Coombe Hill	2.8	77
Tewkesbury	Ashchurch with Walton Cardiff	2.9	79
Tewkesbury	Cleeve Grange	2.9	79
Tewkesbury	Churchdown St John's	3.1	87
Tewkesbury	Shurdington	3.5	102
Tewkesbury	Northway	3.8	106
Tewkesbury	Cleeve St Michael's	4.0	110
Tewkesbury	Brockworth	4.2	114
Tewkesbury	Tewkesbury Town with Mitton	5.3	129
Tewkesbury	Tewkesbury Prior's Park	5.6	131



\* 1 = "best" and 142 = "worst"

Table 10 shows overall claimant rates for Tewkesbury District wards and their position relative to all wards in Gloucestershire.

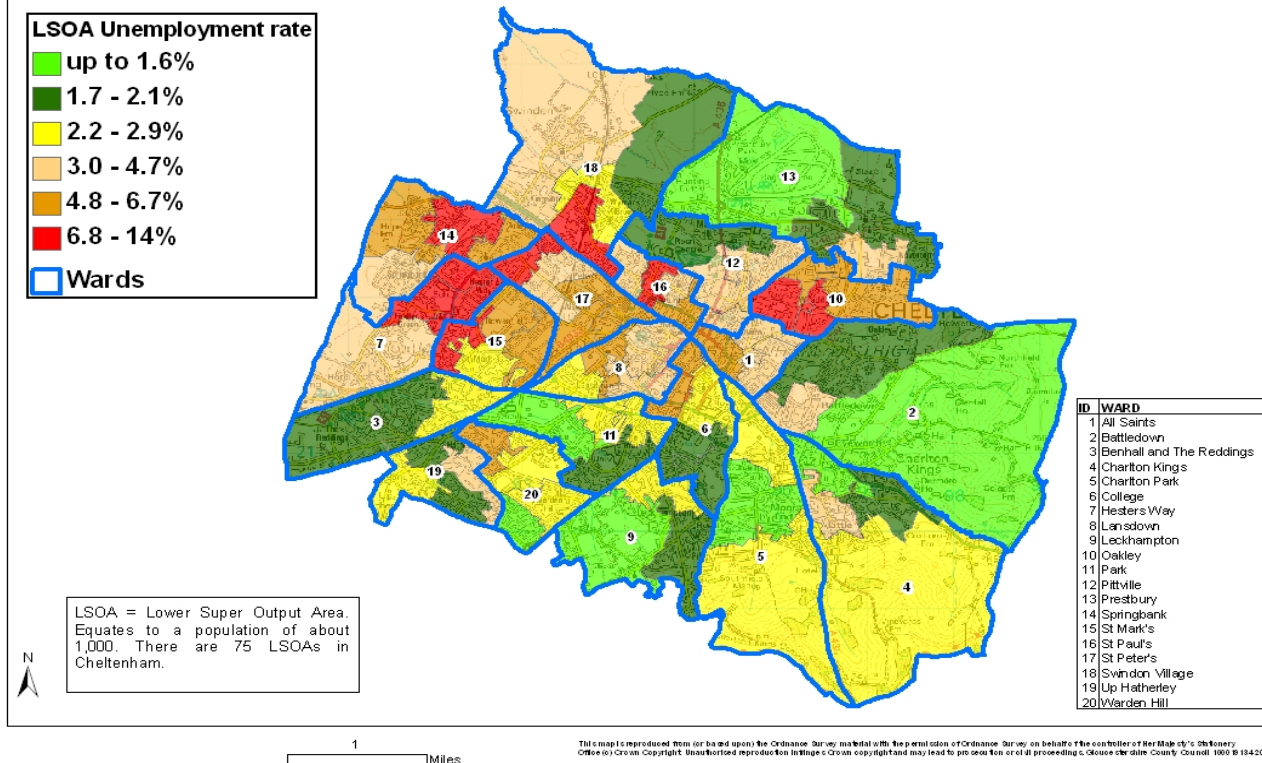
## PART 5: MAP SHOWING DISTRIBUTION OF CLAIMANT RATE ACROSS GLOUCESTERSHIRE



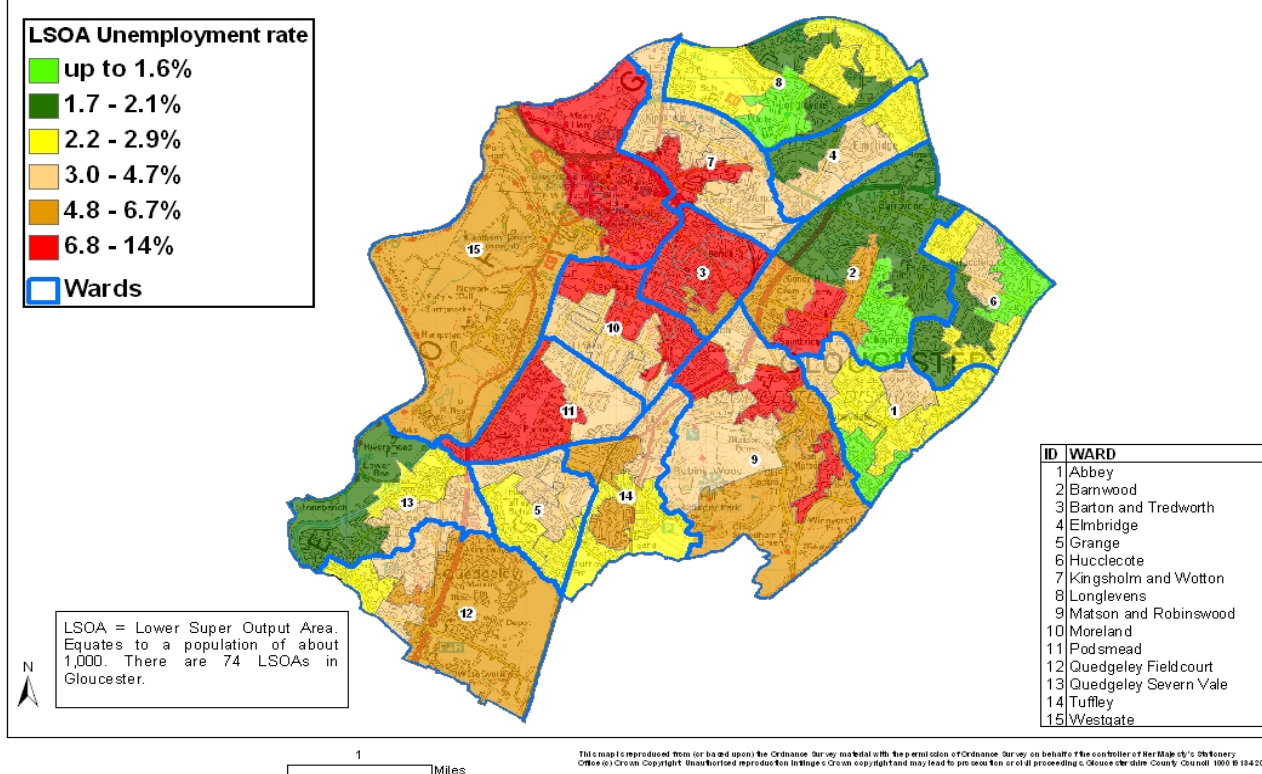


## PART 5: MAP SHOWING DISTRIBUTION OF CLAIMANT RATE ACROSS GLOUCESTERSHIRE

Claimant unemployment rate by LSOA in Cheltenham October 2009



Claimant unemployment rate by LSOA in Gloucester October 2009



## PART 6: YOUNG PEOPLE NOT IN EDUCATION, EMPLOYMENT OR TRAINING (NEET) IN GLOUCESTERSHIRE

Data provided by Prospects, the Connexions service in Gloucestershire on the situation of young people (16-18) in Gloucestershire who are not in education, employment or formal training.

Connexions Gloucestershire is required to report performance with the 16-18 age range against nationally defined criteria for counting the NEET group. The NEET group includes young people actively seeking education, employment or training as well as those young people who are either not yet ready or who are unable to access these opportunities because of their personal circumstances. The figures quoted below include young people in both of these categories.

### Summary

As at the end of October 2009 there were 902 young people aged 16-18 not in education, employment or training in Gloucestershire and this figure translates into an adjusted (\*) 16-18 NEET population of 5.0%. This figure evidences a 0.3% increase from the performance achieved at the end of September 09 with all districts also showing an increase in their numbers of 16-18 NEET young people. The largest increase has been in Cheltenham where the rate has moved from 4.4% in September to 6.1% in October. We have also experienced unprecedented numbers of young people becoming NEET with approx 320 16-18 yr olds joining the register during October.

### Total NEET Group by District Area 31st October 2009

	Cheltenham	Cotswold	Forest	Gloucester	Stroud	Tewkesbury	Total
NEET Group	190	87	115	262	155	93	902(*)
% NEET of total 16-18 cohort	6.1%	3.1%	3.9%	4.9%	4.6%	4.0%	5.0(*)

### Ready Steady Work

As part of our package of enhanced support for young people in the NEET group we will be launching our Ready Steady Work employability programmes during November. These will be aimed at young people who need some additional support, coaching and motivation to help them to enter further education, employment or training. Whilst they are on the programme young people will undertake an accredited qualification in job search as well as receive an individual action plan and intensive careers/personal support. Connexions personal advisers and Youth Workers will deliver the sessions and will provide 1:1 support to the young people taking part. The programme will initially be delivered in Cheltenham, Gloucester and Stroud with young people from other areas receiving support with travel costs to attend if required.

If you would like to receive any further information on Gloucestershire's NEET strategy then please contact [Andrew.Webster@prospects.co.uk](mailto:Andrew.Webster@prospects.co.uk) or telephone 01452 426900

(\*) Adjustment includes a proportion of young people aged 16-18 whose outcomes are not-known to Connexions Gloucestershire