

Cheltenham Parking Review

Background Data

Pittville & St Pauls

March 2013

This booklet presents data collected as part of a review of parking in Cheltenham. The data will be used to quantify parking issues in the town, and understand travel patterns and parking behaviour.

The data includes:

- Vehicle ownership information, provided by the DVLA
- Off-street parking availability data provided by the Valuation Office
- Results of a Parking Survey undertaken in 2012 that tells us:
 - How many vehicles were parked in the town
 - How long these vehicles stayed, and
 - Where these vehicles came from

Cheltenham Parking Review

Number of Registered Vehicles

Legend

Registered Vehicles per Output Area

No Data

1 - 75

76 - 100

101 - 125

126 - 150

151+

This data was provided by the DVLA. The map shows the number of registered vehicles per 'output area'.

Output areas are small sections of towns, each containing a similar number of properties. They are used for reporting statistics, particularly the census.

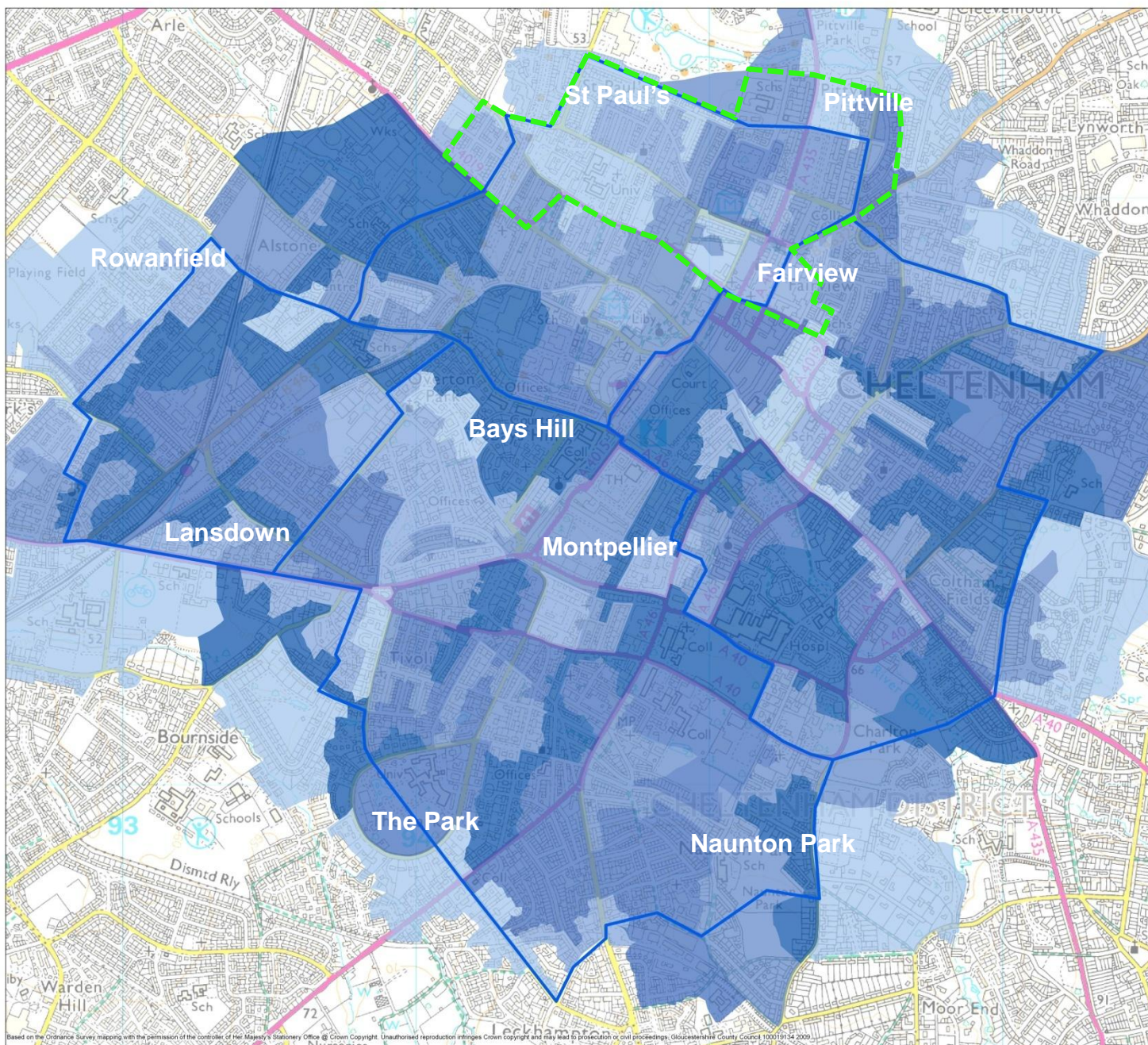
**Cheltenham Parking Review:
Number of Registered Vehicles**

Produced By:
PS

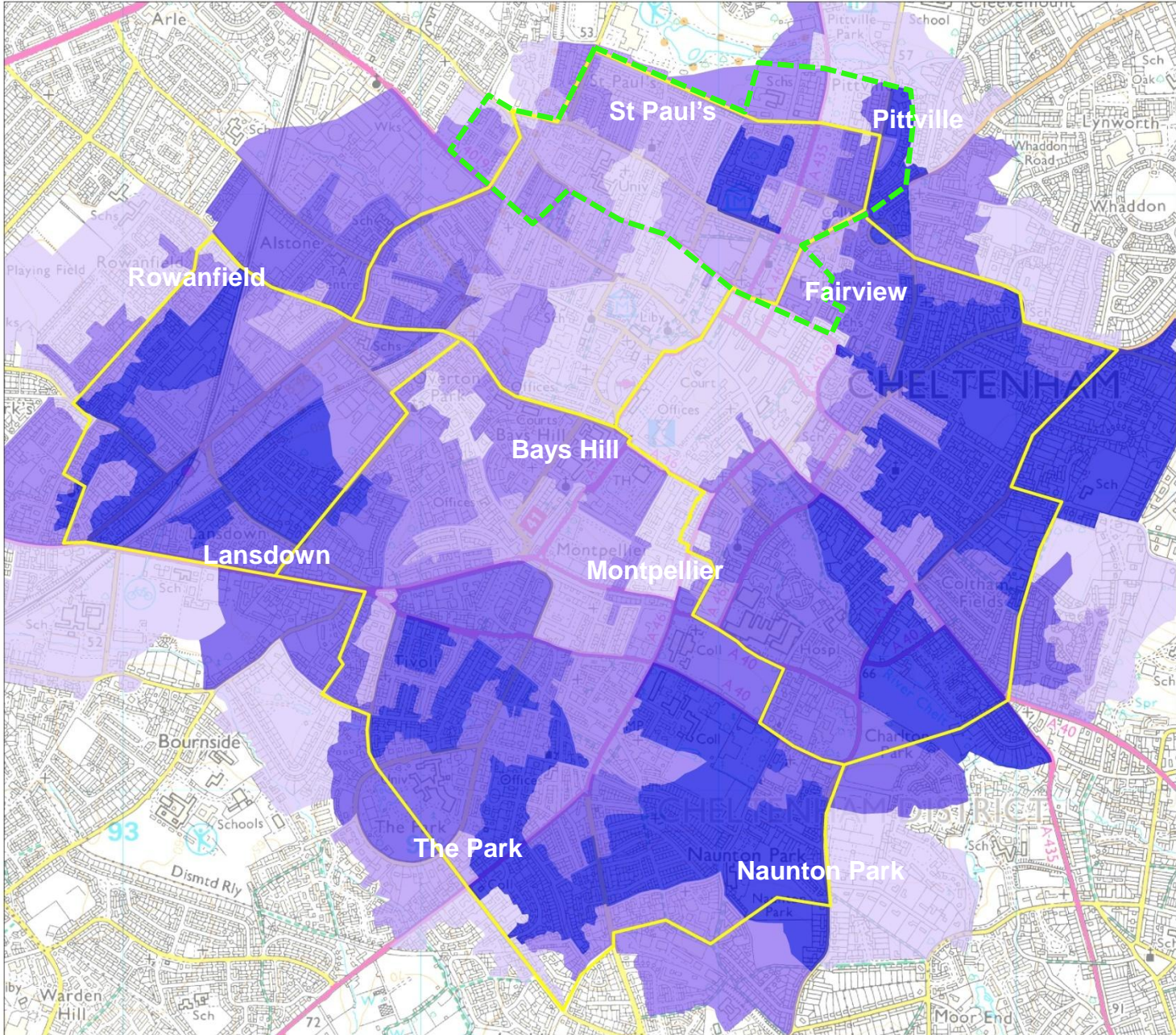
Date:
December 2011

Scale:
Do Not Scale

Drawing No:
CHLT_Veh_01



Vehicle Ownership - Vehicles Per Property– Data supplied by DVLA (October 2011)



Cheltenham Parking Review

Number of Registered Vehicles
per Property

Legend

Registered Vehicles Per Property

- No Data
- 0 - 0.4
- 0.41 - 0.6
- 0.61 - 0.8
- 0.81 - 1.0
- 1.0+

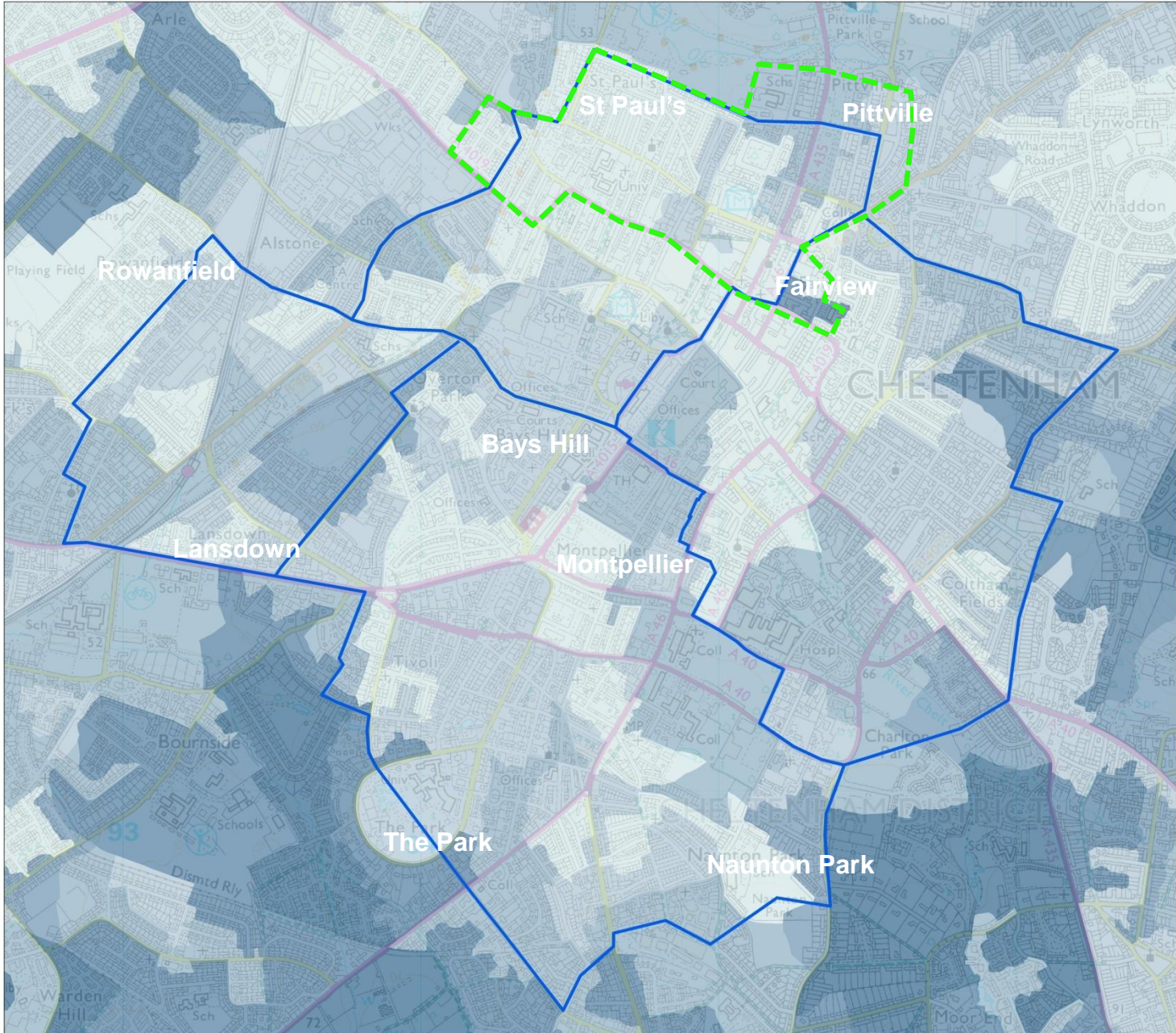
This map is also
based on the DVLA
data.

It shows the average
number of vehicles
registered per
property in each area.

Cheltenham Parking Review: Number of Registered Vehicles per Property

Produced By: PS	Date: December 2011
Scale: Do Not Scale	Drawing No: CHLT_Veh per Prop_01

Domestic Off-Street Parking Spaces per Domestic Property– Data supplied by Valuation Office



Cheltenham Parking Review

Number of Domestic
Off-Street Parking Spaces
per Domestic Property

Legend

No. of Off-St Spaces Per Domestic Prop

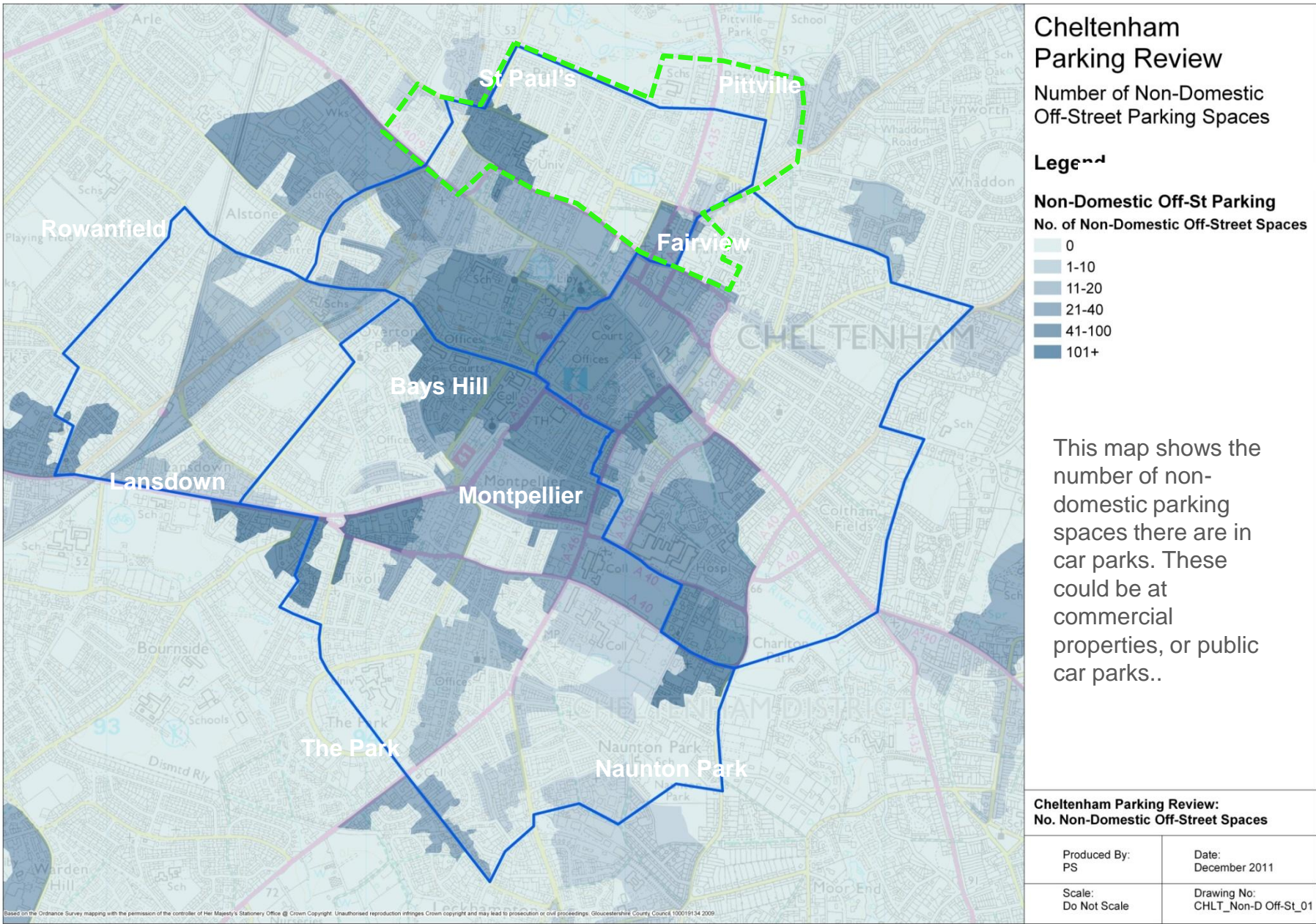
- 0.0 - 0.25
- 0.26 - 0.50
- 0.51 - 0.75
- 0.76 - 0.82
- 0.83 - 1.0
- 1.0 +

The valuation office provided us with information about the number of private off-street parking spaces there are (garages, driveways, private car parks etc). This map shows the average number of off-street parking spaces per property in each area.

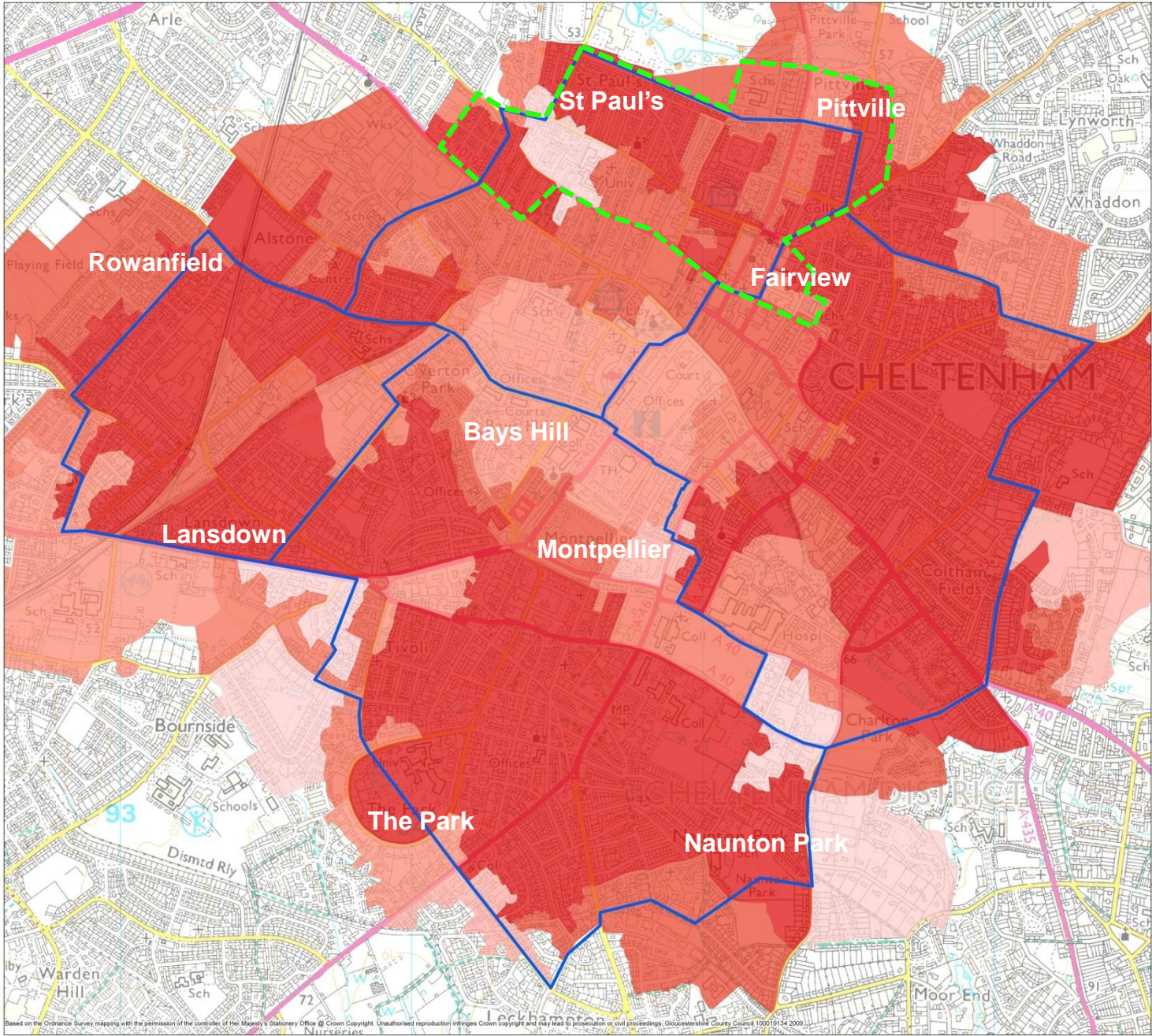
Cheltenham Parking Review:
No.Domestic Off-St Spaces per Property

Produced By: PS	Date: December 2011
Scale: Do Not Scale	Drawing No: CHLT_Dom Off-St P_01

Non-Domestic Off-Street Parking Spaces per Non-Domestic Property– Data supplied by Valuation Office



On Street Parking Pressure – Registered Vehicles vs. Off-Street Parking Capacity



Cheltenham Parking Review

On-Street Parking Pressure
Registered Vehicles vs Off-Street Capacity

Legend

On-Street Parking Pressure

Pressure

LOW

>

>

>

>

HIGH

Vehicle ownership and the availability of off-street parking have been compared to identify areas where large numbers of locally registered vehicles will need to park on the street. Areas of high pressure are shown as darker shades on the map. This does not consider the impact of visitors vehicles.

Cheltenham Parking Review: On-Street Parking Pressure

Produced By:
PS

Date:
December 2011

Scale:
Do Not Scale

Drawing No:
CHLT_Pressure_01

Map of Commercial Properties

Cheltenham Residents Parking Review

Phase 3b Map of Property Type

Label Key:

Boundary

- Ph3b
- CBC_Zones

Housing Type

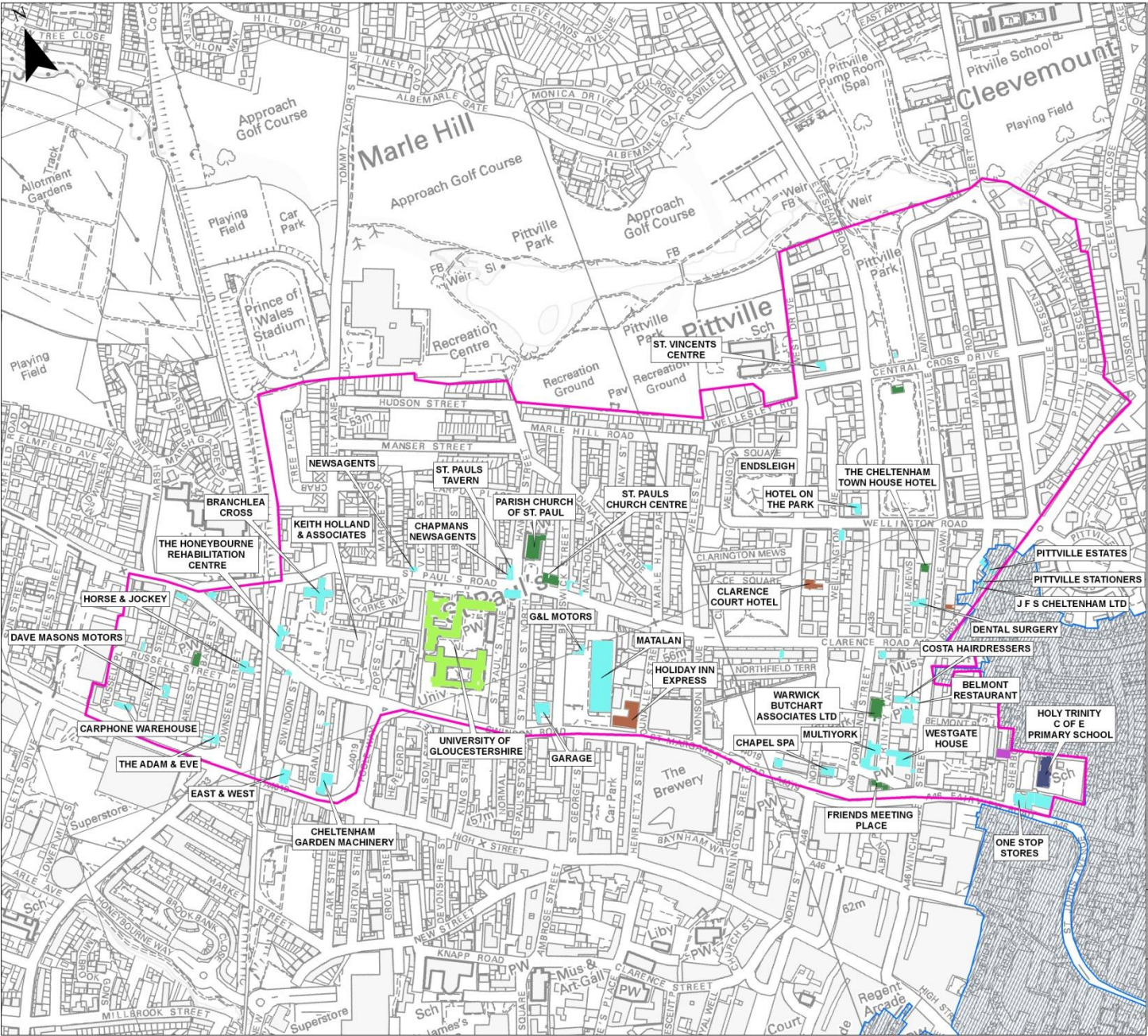
- Commercial
- Industrial
- Hotel
- University
- School
- PoW - Community or Church Hall

Cheltenham Residents Parking Review: Ph3b Property Types

Produced By: KM Date: December 2012

Scale: Do Not Scale Drawing No: CRP_PH3b_Comm_1

This document is designed to be viewed online if you have trouble zooming in to an readable level, please visit your local library for assistance



Map of Residential Properties

Cheltenham Residents Parking Review

Phase 3b
Map of Property Type

Label Key:

Ph3b_building_MMap

Housing Type

- Property
- Residential
- Terraced
- Semi-Detached
- Detached

Boundary

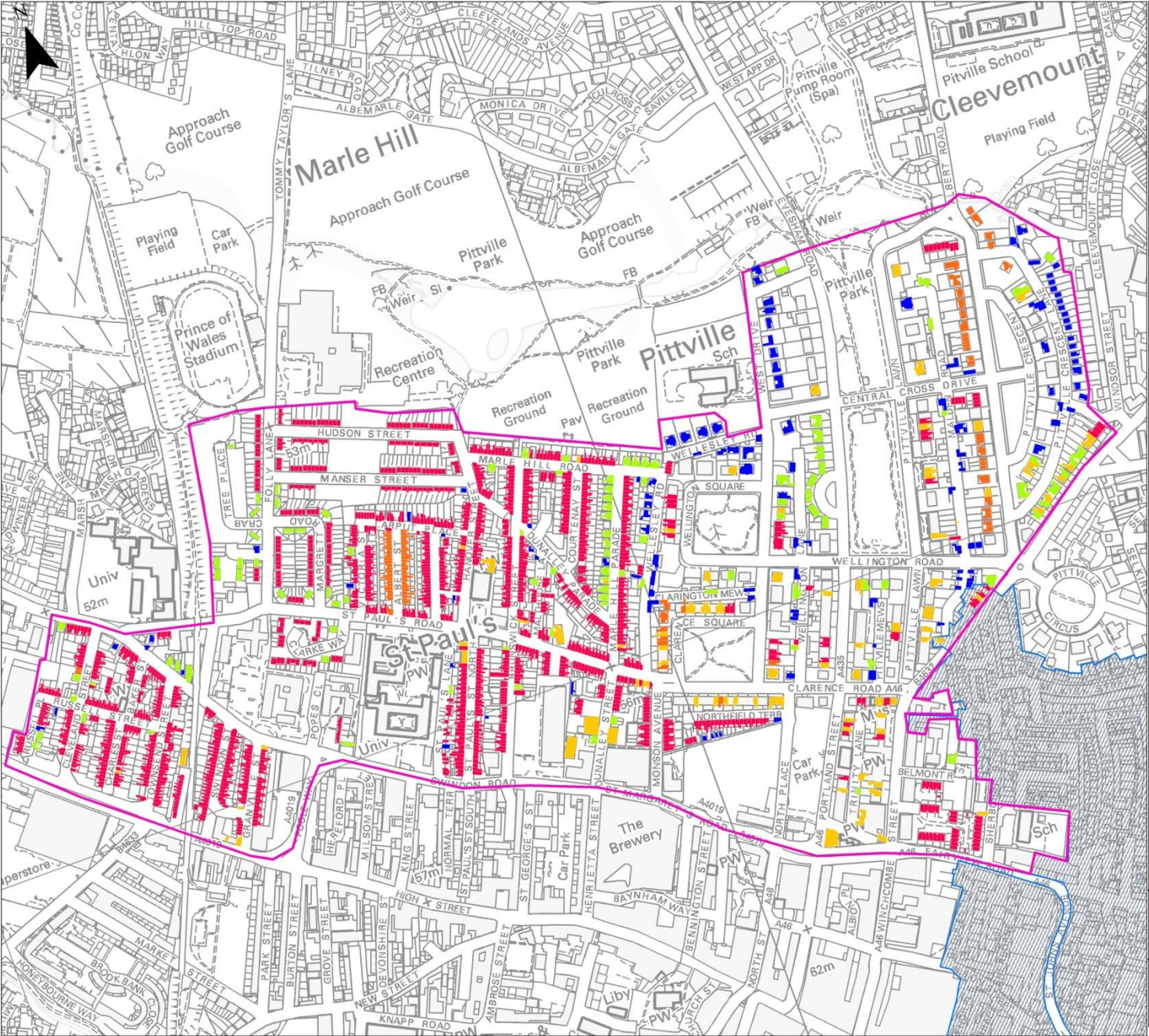
- Ph3b
- CBC_Zones

Cheltenham Residents Parking Review: Ph3b Property Types

Produced By: Date:
KM December 2012

Scale: Drawing No:
Do Not Scale CRP_PH3b_Res_1

This document is designed to be viewed online
if you have trouble zooming in to a readable
level, please visit your local library for assistance



Map of Flats or Multiple Occupancy Properties

Cheltenham Residents Parking Review

Phase 3b
Map of Property Type

Label Key:

Boundary

Ph3b

CBC_Zones

Housing Type

Flat or Multi Occ

Cheltenham Residents Parking Review: Ph3b Property Types

Produced By: KM
Date: December 2012

Scale: Do Not Scale
Drawing No: CRP_PH3b_Res_type_1

This document is designed to be viewed online if you have trouble zooming in to a readable level, please visit your local library for assistance



Map of Flats or Multiple Occupancy Properties - Count

Cheltenham Residents Parking Review

Phase 3b Map of Property Type

Label Key:

Boundary

- Ph3b
- CBC_Zones

Ph3b_Add_icount

Address Count

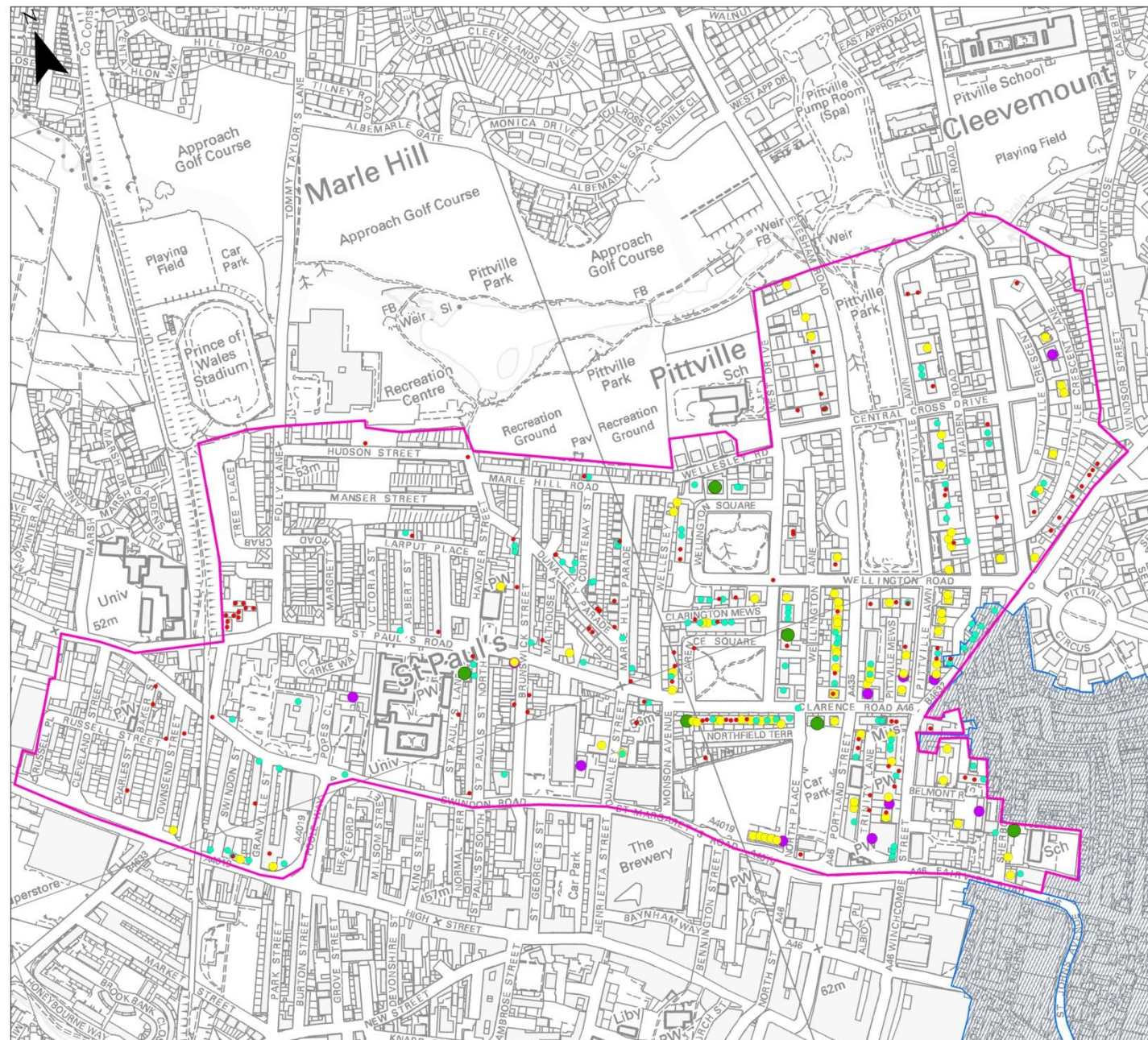
- 2
- 2 - 5
- 5 - 10
- 10 - 15
- 151 - 200

Please Note: Further data relating to student lets is being collated but is not included on this plan.

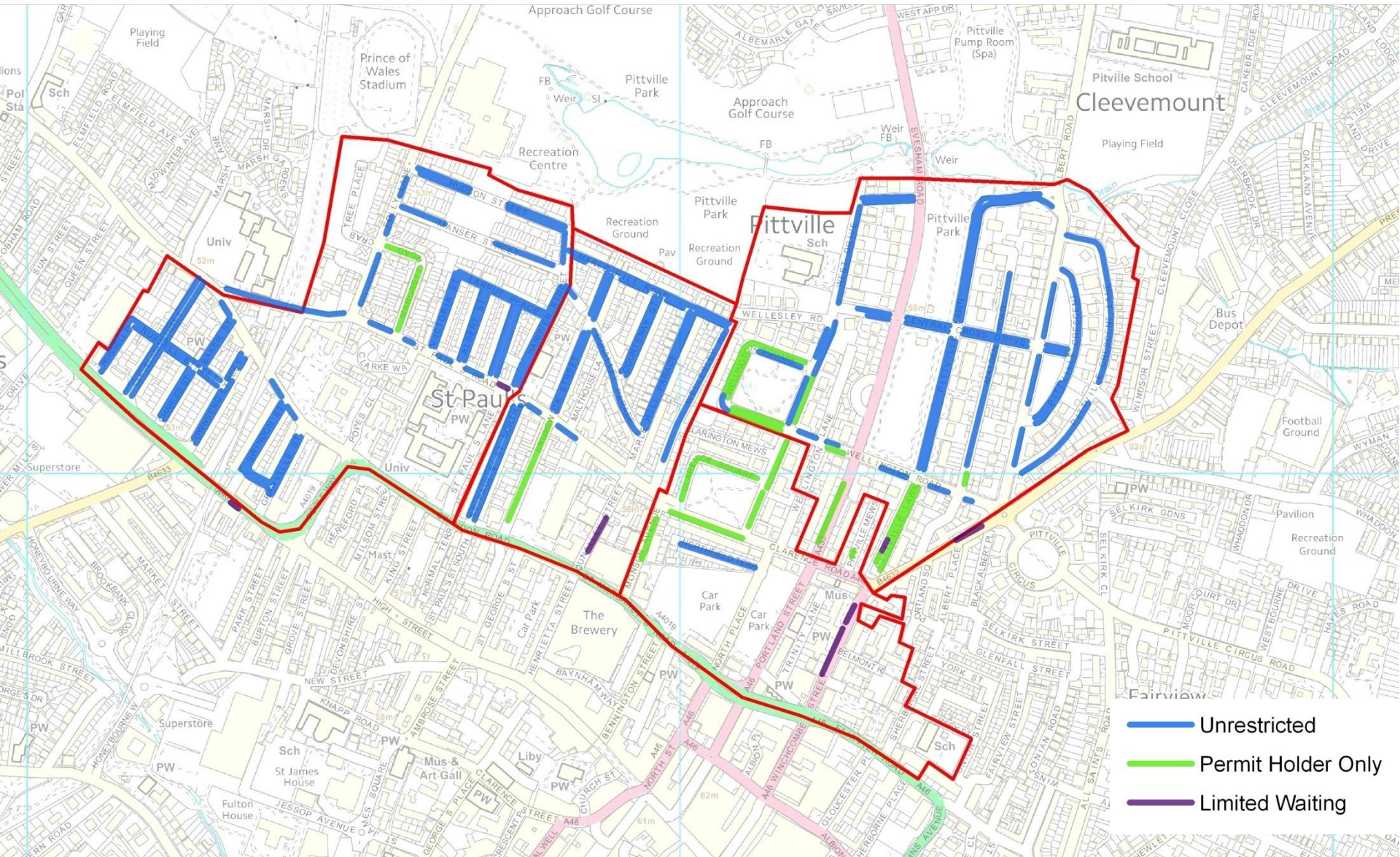
Cheltenham Residents Parking Review: Ph3b Property Types

Produced By: KM	Date: December 2012
Scale: Do Not Scale	Drawing No: CRP_PH3b_Flat_count_1

This document is designed to be viewed online if you have trouble zooming in to a readable level, please visit your local library for assistance



Existing Parking Availability Overview



Please Note: The remaining gaps within the review area are yellow lines

Parking Survey

A parking survey was undertaken across 3 weekdays in 2012.

The results from the survey tell us

- How many vehicles were parked in the area
- How long these vehicles stayed, and
- Where these vehicles came from

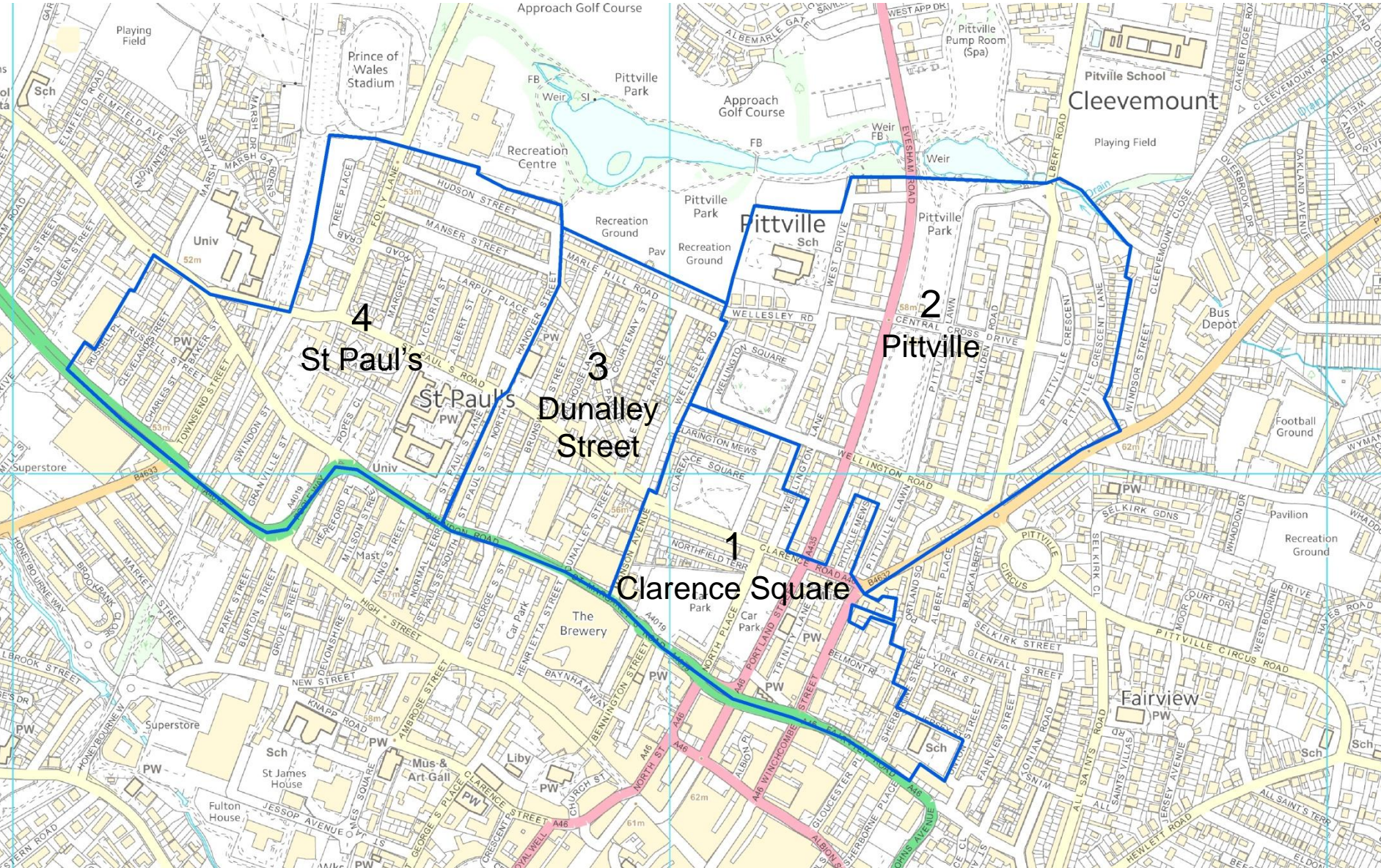
For the parking survey, the Pitville and St Pauls area was split into 4 distinct zones so that different patterns in different parts of the area could be compared.

These zones are shown overleaf.

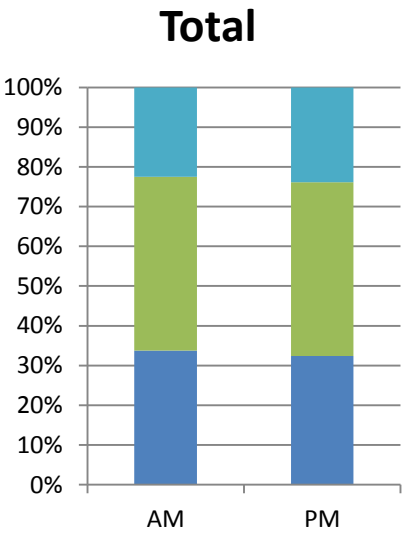
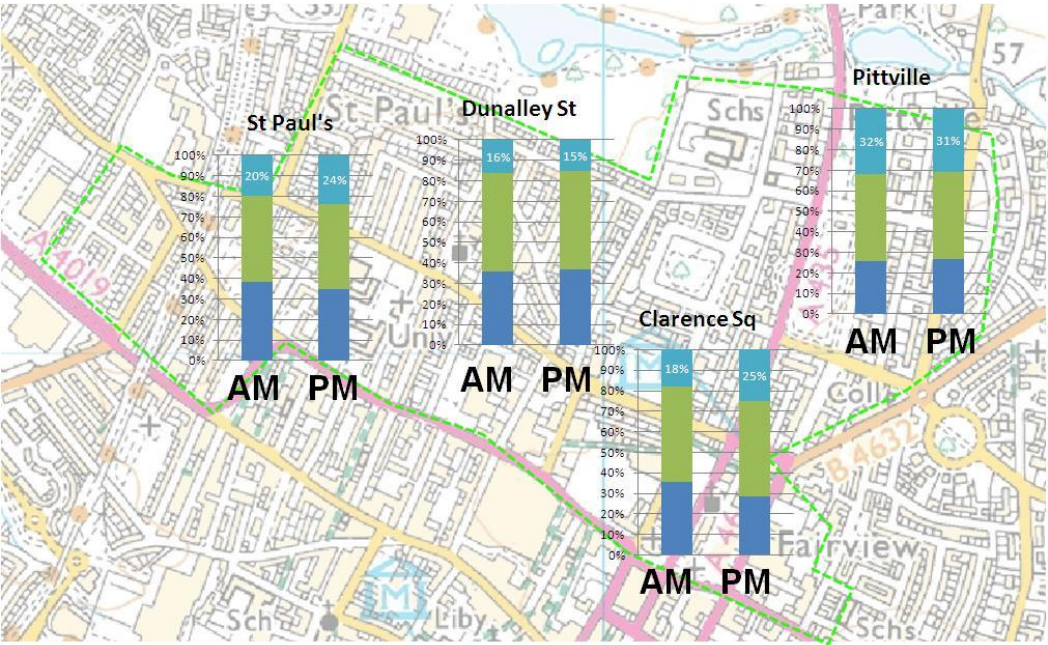
Parked cars were recorded twice per day – once in the morning and once in the afternoon. The results were compared to identify which cars were seen on both surveys – classified as long-stay vehicles. Cars only seen in one of the two surveys are classified as short-stay vehicles.

Parking Survey Zones

The map illustrates the layout of the Pittville area, with four distinct parking survey zones outlined in blue. Zone 1, labeled 'Clarence Square', is located in the lower central part of the map. Zone 2, labeled 'Pittville', is situated to the north of Zone 1. Zone 3, labeled 'Dunalley Street', is located to the east of Zone 1. Zone 4, labeled 'St Paul's', is located to the west of Zone 1. The map also shows various landmarks, including the Prince of Wales Stadium, Pittville Park, and the Approach Golf Course. Major roads like the A46 and A48 are visible, along with numerous smaller streets and residential areas.



Parking Survey – How many vehicles were parked, and for how long? (weekday)



The graphs opposite show how much of the available parking capacity in each zone was occupied by long stay and short stay parking in both the morning and afternoon.

As a rule of thumb, when parking levels reach 80% of capacity, people will begin to have difficulties in finding a space.

The results clearly show that on-street parking is very congested. Long-stay parking accounts for approximately 40% of capacity.

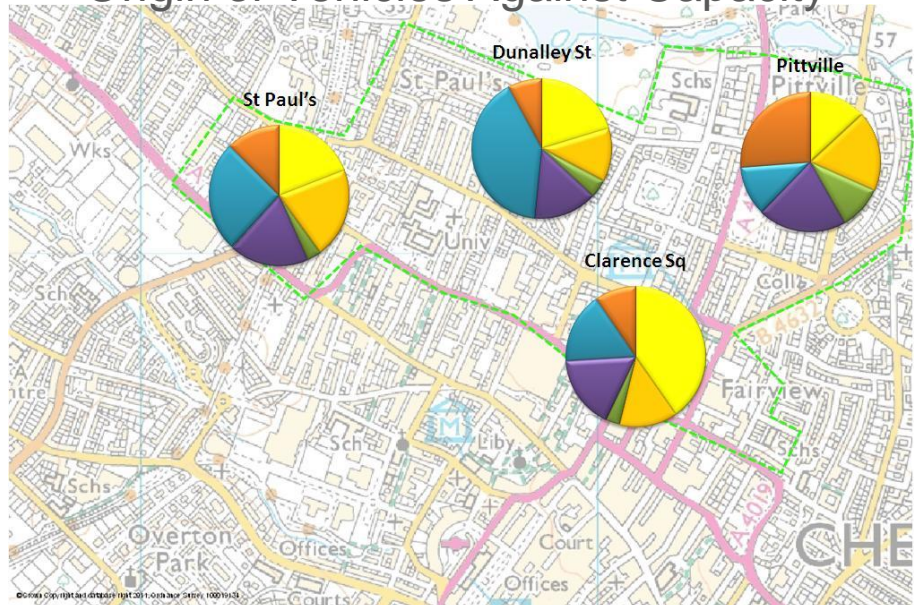
Weekday Parking Survey Results
Number of Observed Vehicles
Against Capacity



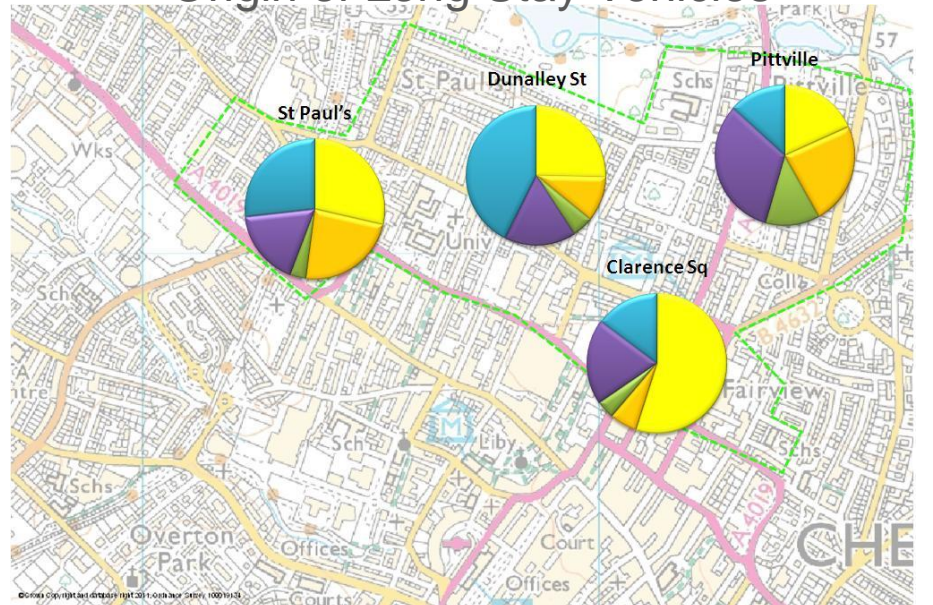
Parking Survey – Where did the parked vehicles come from? (weekday)

The maps below show where vehicles parked in each zone/car park came from. Vehicles have been categorised as originating from: Within the review area; Within 2 miles; Within 5 miles ; within 25 miles and over 25 miles. The map on the left shows origin as a proportion of capacity. The map on the right shows the origin of long stay parked vehicles.

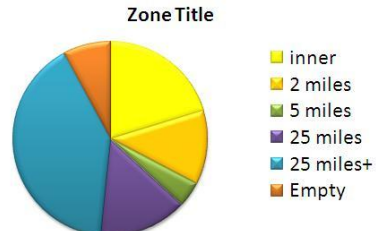
Origin of Vehicles Against Capacity



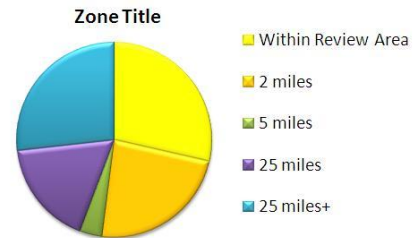
Origin of Long Stay Vehicles



Weekday ANPR Results
Origin of Observed Vehicles
Against Capacity



Weekday ANPR Results
Origin of Long Stay Vehicles



Parking Survey – Where did the parked vehicles come from? (weekday)

Origin of Vehicles (Weekday Data)

All Vehicles							
	On-Street Capacity	Within Review Area	2 miles	5 miles	25 miles	25 miles+	Total
Clarence Sq	101	37	12	3	16	24	92
Pittville	448	54	77	42	84	156	414
Dunalley St	338	62	38	13	45	148	307
St Paul's	577	100	110	17	97	201	526
Short Stay							
	On-Street Capacity	Within Review Area	2 miles	5 miles	25 miles	25 miles+	Total
Clarence Sq	101	11	9	1	6	17	44
Pittville	448	20	32	18	23	131	224
Dunalley St	338	21	21	5	19	79	145
St Paul's	577	32	54	8	55	137	286
Long Stay							
	On-Street Capacity	Within Review Area	2 miles	5 miles	25 miles	25 miles+	Total
Clarence Sq	101	26	3	2	9	7	47
Pittville	448	35	45	24	61	25	190
Dunalley St	338	41	17	8	27	69	162
St Paul's	577	69	56	9	42	64	240

Origin of Vehicles - % of vehicles parked in zone against capacity (Weekday Data)

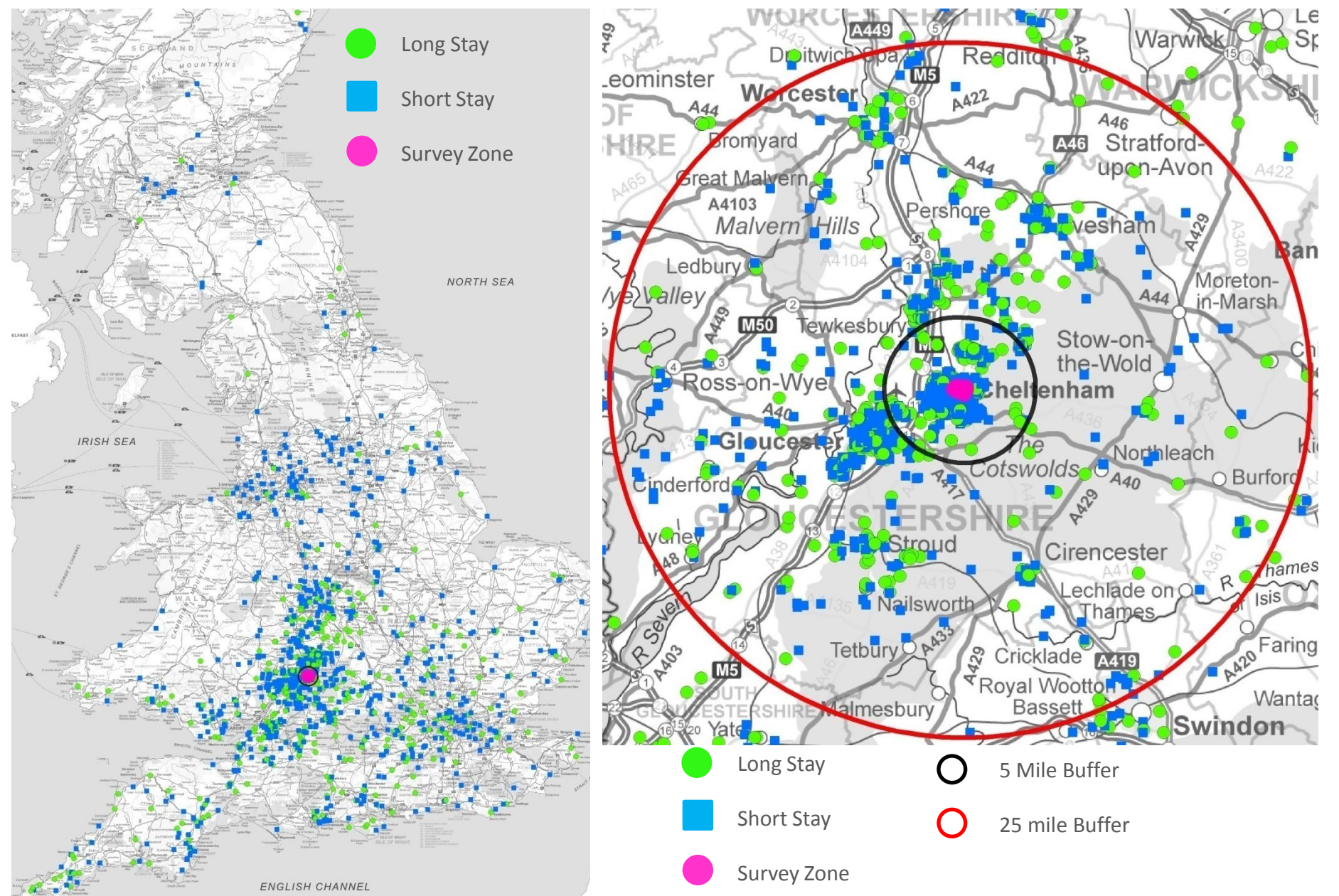
All Vehicles							
	On-Street Capacity	Within Review Area	2 miles	5 miles	25 miles	25 miles+	Total Against Capacity
Clarence Sq	101	37%	12%	3%	16%	24%	91%
Pittville	448	12%	17%	9%	19%	35%	92%
Dunalley St	338	18%	11%	4%	13%	44%	91%
St Paul's	577	17%	19%	3%	17%	35%	91%
Short Stay							
	Capacity	Within Review Area	2 miles	5 miles	25 miles	25 miles+	Total Against Capacity
Clarence Sq	101	11%	9%	1%	6%	38%	44%
Pittville	448	4%	7%	4%	5%	59%	50%
Dunalley St	338	6%	6%	1%	6%	55%	43%
St Paul's	577	5%	9%	1%	10%	48%	50%
Long Stay							
	Capacity	Within Review Area	2 miles	5 miles	25 miles	25 miles+	Total Against Capacity
Clarence Sq	101	26%	3%	2%	9%	7%	47%
Pittville	448	8%	10%	5%	14%	6%	42%
Dunalley St	338	12%	5%	2%	8%	20%	48%
St Paul's	577	12%	10%	2%	7%	11%	42%

Parking Survey – Where did the parked vehicles come from? (weekday)

All Visiting Vehicles				5 Mile Visiting Vehicles			
All Vehicles				All Vehicles visiting within 5 miles			
	No.	% of Parked Vehicles	% of Capacity		No.	% of Parked Vehicles	% of Capacity
Clarence Sq	55	60%	54%	Clarence Sq	15	17%	15%
Pittville	360	87%	80%	Pittville	119	29%	27%
Dunalley St	244	80%	72%	Dunalley St	51	17%	15%
St Paul's	426	81%	74%	St Paul's	127	24%	22%
Short Stay				Short Stay visiting within 5 miles			
	No.	% of Parked Vehicles	% of Capacity		No.	% of Parked Vehicles	% of Capacity
Clarence Sq	33	75%	33%	Clarence Sq	10	23%	10%
Pittville	205	91%	46%	Pittville	50	22%	11%
Dunalley St	124	85%	37%	Dunalley St	26	18%	8%
St Paul's	254	89%	44%	St Paul's	62	22%	11%
Long Stay				Long Stay visiting within 5 miles			
	No.	% of Parked Vehicles	% of Capacity		No.	% of Parked Vehicles	% of Capacity
Clarence Sq	21	45%	21%	Clarence Sq	5	11%	5%
Pittville	155	82%	35%	Pittville	69	36%	15%
Dunalley St	121	75%	36%	Dunalley St	25	15%	7%
St Paul's	172	71%	30%	St Paul's	65	27%	11%

Parking Survey – Where did the parked vehicles come from? (weekday average)

The map below show where vehicles parked in the Pitville/St Pauls area came from. This is an estimate, based on vehicle registration details



Parking Survey – Where did vehicles come from? (weekday average)

The map below is an estimate of where vehicles parked in the Pitville/St Pauls area came from. This is based on vehicle registration details. Long stay vehicles are shown on the left; short stay on the right. The size/colour of the dot indicates the number of vehicles from each location during the week.

