

Gloucestershire

– A great place to live and work



About our 6 districts



TEWKESBURY

Tewkesbury Borough Council Offices
Gloucester Road | Tewkesbury | GL20 5TT

Situated where the Rivers Severn and Avon meet, Tewkesbury has a character all of its own and is one of the few places in the Cotswold area where you will see black and white half-timbered buildings. There are almost 400 listed buildings and this makes it popular with visitors who enjoy spending time on the riverbanks, visiting the heritage centre and admiring the elegant Abbey.

Tewkesbury has something to offer everyone from great local food dining in many of the cafes, bistros or pubs, to excellent shopping at a range of independent shops.



CHELTENHAM

Edinburgh House | Coronation Square
Cheltenham | GL51 7SA

A wonderful mix of the traditional and the new, Cheltenham nestles against the Cotswolds. With its unique festival vibes, an abundance of independent and much loved high street shops and incredible dining experiences from street food to Michelin starred fine dining, Cheltenham is a must-visit town.

As the most complete Regency town in the UK with a population of just 117,000, Cheltenham is intimate and friendly, a civilised place of culture, learning and discovery.



COTSWOLDS

The Old School House | 47 Lewis Lane
Cirencester | GL7 1EB

Cirencester, known as the capital of the Cotswolds, is a lovely market town with a fascinating history. In Roman times, Cirencester was the second largest town only to London. It became a prosperous wool town in the medieval period, which is the basis for the charming town with ancient honey coloured stone buildings in picturesque narrow streets that we know today. Its easy access to major road networks and mainline railway belies its charming and peaceful character.

The Market Place is the heart of the town and is home to a Charter Market and a Farmers' Market. Cirencester is renowned for its very special shops, individual boutiques, fascinating antique emporiums and craft shops as well as national chain stores.

GLOUCESTER

Shire Hall | Westgate Street
Gloucester | GL1 2TP

Gloucester has a unique history from its Roman foundations to its Victorian docklands. It's a vibrant multicultural city that combines historic architecture with a unique blend of visitor attractions, festivals and entertainment, a collection of high street and specialist shops and a mouth watering array of tea shops, restaurants, wine bars and pubs offer food and drink for all tastes. The city is dominated by the magnificent cathedral, overlooked by the Cotswolds Hills in the lush Severn Valley and is easily accessible from all corners of the country.

The country's most inland port, the city has seen unprecedented regeneration in the last decade, most visibly at the city's historic docks.



FOREST OF DEAN

Dean House | Station Street
Cinderford | GL14 2JF

The Forest of Dean is England's oldest oak forest. This former royal hunting ground consists of more than 40 miles of unspoilt woodland and became England's first National Forest Park in the 1930s.

It is the second largest crown forest in the UK behind the New Forest and is an enchanting place to walk or cycle, with some of the country's most dramatic landscapes and a scattering of picturesque towns and villages such as Newent, Coleford and Soudley.

Local attractions include the Dean Heritage Centre, Dean Forest Railway and Puzzlewood.



STROUD

Redmond House | Beeches Green
Stroud | GL5 4BH

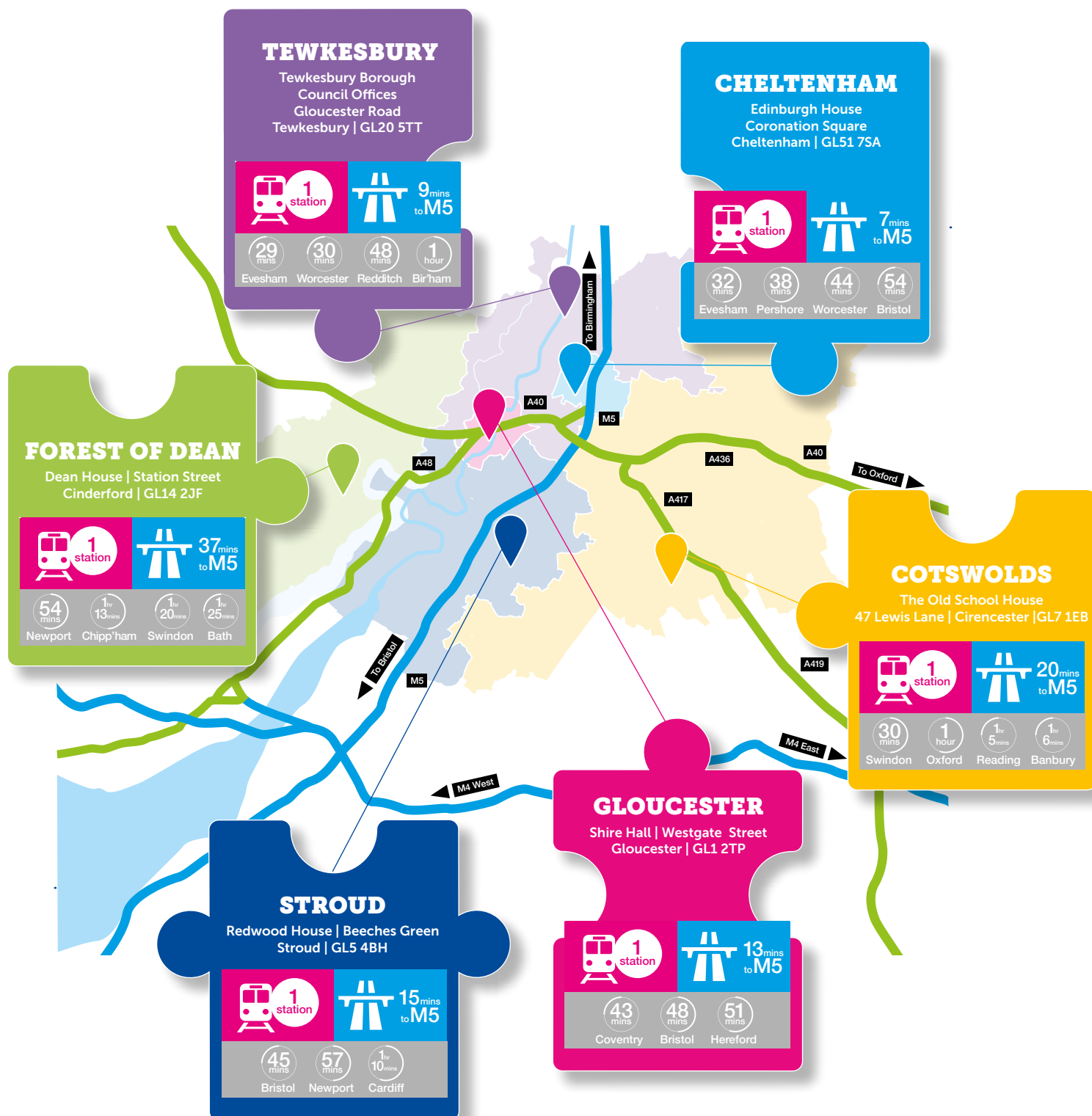
Brimming with independent shops, cafes and galleries and home to one of the best Farmers' Markets in the country, there are plenty of things to do in Stroud, described by Jasper Conran as 'the Covent Garden of the Cotswolds'.

In Stroud, you will find an eclectic mix of shops selling everything from fossils to fairies and vintage to vinyl, all set against the dramatic backdrop of the beautiful Five Valleys, just 90 minutes by train from London.

Stroud is well-known for its industrial heritage and visitors can spot the former textile mills along the valleys.



Locality office locations for safeguarding and assessment teams



About our teams

MASH

Our Multi-Agency Safeguarding Hub is based in Gloucester. The team works closely with partners to explore any concern or risk around contacts to social care and provide screening functions to inform decision making about responses required.

Assessment

Our Assessment Teams get involved after referral and are first out to see a family to complete a single assessment, and work with families up to Initial Child Protection Conferences where this is necessary. Their focus is on delivering good quality services to children through assessments which take account of historical information, culture, disability and the voice of the children.

Safeguarding

Our Safeguarding Teams ensure that every child has a clear assessment of need, with a plan that sets out how help will be delivered, outcomes to be achieved and arrangements for review. Children supported in these teams are subject to child protection plans, children in need plans or are going through court (PLO) or undergoing permanency planning having recently entered care. Within Gloucester, we operate a Pod model in which smaller geographically focussed teams work together as a multi-agency with embedded partner organisations.

Disabilities

Gloucester serves as the hub for our Disabled Children & Young People Service which works with disabled children and young people covering the full range of support across early help, safeguarding and short breaks.

Fostering

Gloucestershire fostering service is county wide and includes the recruitment, assessment and support of foster carers who are trained and able to care for a wide range of children who are unable to be cared for by their family. We work with the whole team around the child to ensure the foster carer is able to meet the needs of individual children.

Permanency Teams (0-11's)

Our Children in Care Permanency Team support children aged 0-11 years to achieve a stable outcome. This could mean adoption, special guardianship, long term fostering or returning home. In doing so our social workers are focused on empowering children by making sure their voice is heard and their life history is considered.

Permanency Teams (11-25) and Care Leaver Teams

These teams support children in care and care leavers between the ages of 11-25 in maintaining a stable placement as well as pathway planning. They make sure children are equipped with the skills to be independent and reach their full potential which will support their transition into becoming a care leaver.

About our roles

Children's Senior Social Worker

As an experienced senior social worker you will manage a complex caseload working with children, young people and their families. Senior social workers also act as role models, supporting less experienced social workers and promoting best practice. Senior social workers are able to apply critical and ethical understanding of legislation and statutory frameworks. They can design outcome-focused plans and interventions to ensure best outcomes for children, young people and their families.

Children's Advanced Practitioner

Our advanced practitioners are experienced and skilled social workers who are responsible for the quality of social work practice alongside team managers. They take the lead in the professional development of social workers and other practitioners, whilst holding a small complex caseload. Working as the practice educator for student placements, advanced practitioners work closely with the team manager to create a culture of continuous professional development and learning.

Children's Team Manager

Our team managers lead and manage a team of social workers in the delivery of services to children, young people and families. They have oversight of the team activity, managing performance and making sure staff have the chance to develop. Managers make the decisions around the cases in the team, working closely with multi-agency partners and senior managers as appropriate.

Our offer

Pay and rewards		
Competitive Salary 	Welcome and retention payments 	Relocation payment of up to £8,000 
Generous leave entitlement <i>Plus purchase up to 10 extra days leave</i> 	Employee Assistance Programme <i>Putting your health and wellbeing first</i> 	Registration paid for you 
Family friendly and mobile working 	Local government pension 	Career development programme <i>Supported by our social work academy</i> 



For rewarding career opportunities, apply today

If you would like more information, contact us today.

Please email CSWrecruitment@gloucestershire.gov.uk

Gloucestershire County Council
Shire Hall, Westgate Street,
Gloucester GL1 2TG

www.gloucestershire.gov.uk/childrens-social-work-jobs

Tel: 01452 425000

 @GCCSocialWork  GCCsocialcarecareers  CSWrecruitment@gloucestershire.gov.uk