



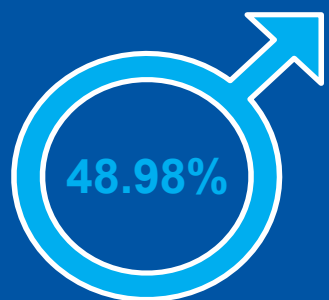
Mid-2024 89,753



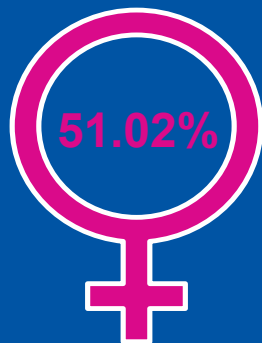
0.79% + 703 people

Between mid-2023 and mid-2024  
(Mid-2023 89,050)

### Sex split



Male



Female

### Median age

48.3  
years

### Broad age groups



0-15  
16.07%



16-64  
58.34%



65+  
25.59%

### Components of change



-0.30%

Births - deaths



+0.96%

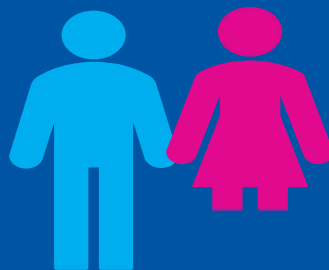
Internal  
migration



+0.55%

International  
migration

### Population density



171 people per square  
kilometre

### District lens mid-2024:

Gloucester: 138,598  1.68%

Stroud: 125,680  0.98%

Cheltenham: 121,739  0.73%

Tewkesbury: 101,949  2.41%

Cotswold: 91,661  0.16%

Forest of Dean: 89,753  0.79%