

Percentage of population aged 16+ who were unemployed at Lower Super Output Area Level, 2021

Key

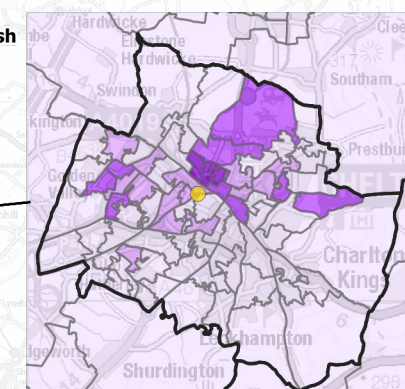
Percentage

- 3% or less
- 3.1 - 4.0%
- 4.1 - 5.0%
- 5.1 - 6.0%
- More than 6%
- District Boundaries

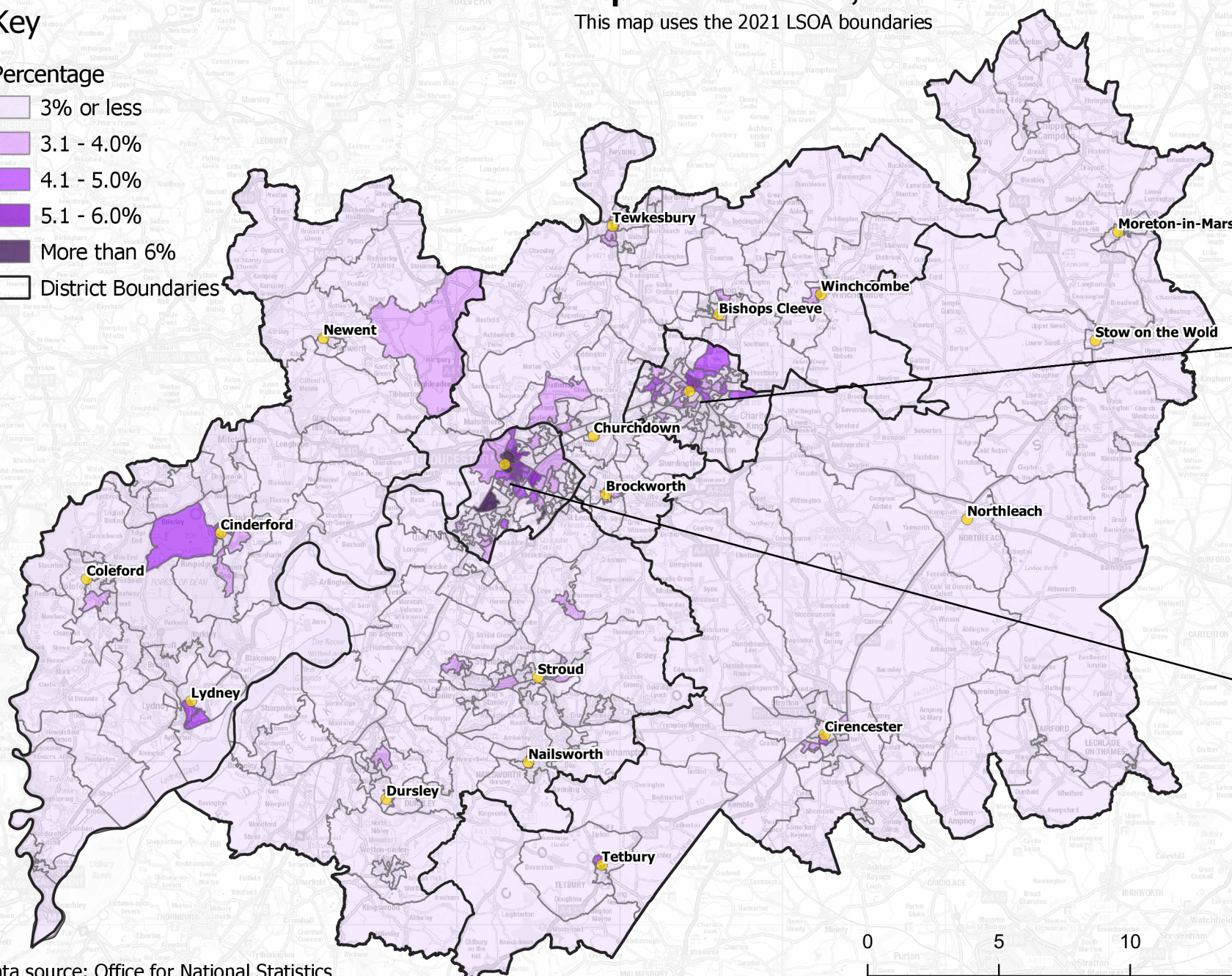
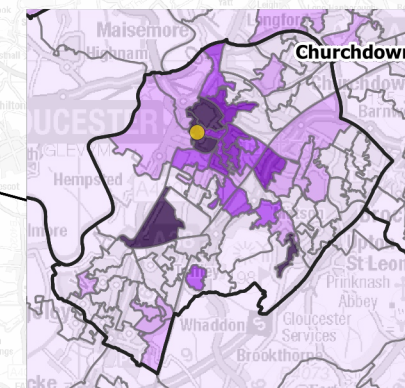
This map uses the 2021 LSOA boundaries

This includes full time students who were unemployed

Cheltenham



Gloucester



Data source: Office for National Statistics